

# Source Data for Figure 5

Figure 5A

Right is with membrane overlay to show ladder. Red box shows area in figure

- 1: CAL51 WT
- 2: CAL51 PARP1-GFP siLUC untreated
- 3: CAL51 PARP1-GFP siLUC Tala + MMS
- 4: CAL51 PARP1-GFP siUFD1 Tala + MMS
- 5: CAL51 PARP1-GFP siTEX264 Tala + MMS

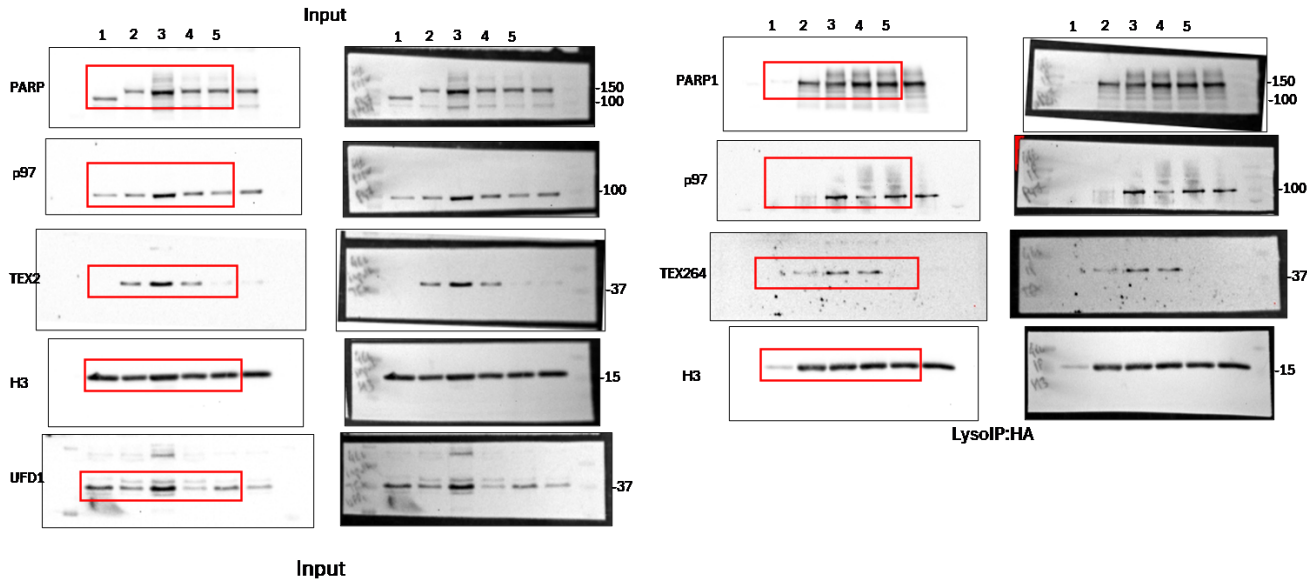
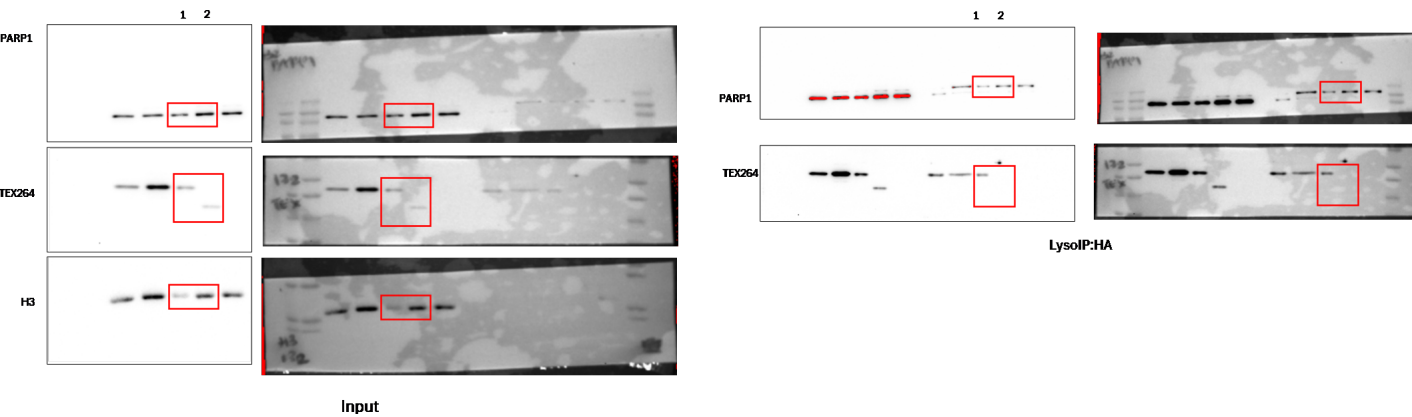


Figure 5E

Right is with membrane overlay to show ladder. Red box shows area in figure

- 1: HeLa (PARP1-GFP) + TEX264-wt
- 2: HeLa (PARP1-GFP) + TEX264-D272-end



**Figure 5H-I**

Right is with membrane overlay to show ladder. Red box shows area in figure

- 1: HeLa WT
- 2: HeLa TMEM Baf
- 3: HeLa TMEM Tala + MMS + Baf
- 4: HeLa TMEM TEX264-/- Baf
- 5: HeLa TMEM TEX264-/- Tala + MMS + Baf
- 6: HeLa TMEM TEX264-/- TEX-WT Baf
- 7: HeLa TMEM TEX264-/- TEX-WT Tala + MMS + Baf
- 8: HeLa TMEM TEX264-/- TEX-SHP Baf
- 9: HeLa TMEM TEX264-/- TEX-SHP Tala + MMS + Baf
- 10: HeLa TMEM TEX264-/- TEX-LIR Baf
- 11: HeLa TMEM TEX264-/- TEX-LIR Tala + MMS + Baf

PARP1 signal normalised to HA then against ctrl TM+BAF						
EXP	WT Tala + MMS + Baf	KO Tala + MMS + Baf	KO+WT Tala + MMS + Baf	KO + SHP Tala + MMS + Baf	KO + LIR Tala + MMS + Baf	
#1	1	0.198226946	0.788537611	0.024821441	0.380003357	
#2	1	0.454615826	1.450437767	0.447278042	0.224710739	
#3	1		1.622367021	0.315016849	0.026818418	

