

Additional file 6: Alignment to best practices framework.

Framework for alignment to best practices (reproduced from A systematic approach for undertaking a research priority-setting exercise: guidance for WHO staff, 2020).

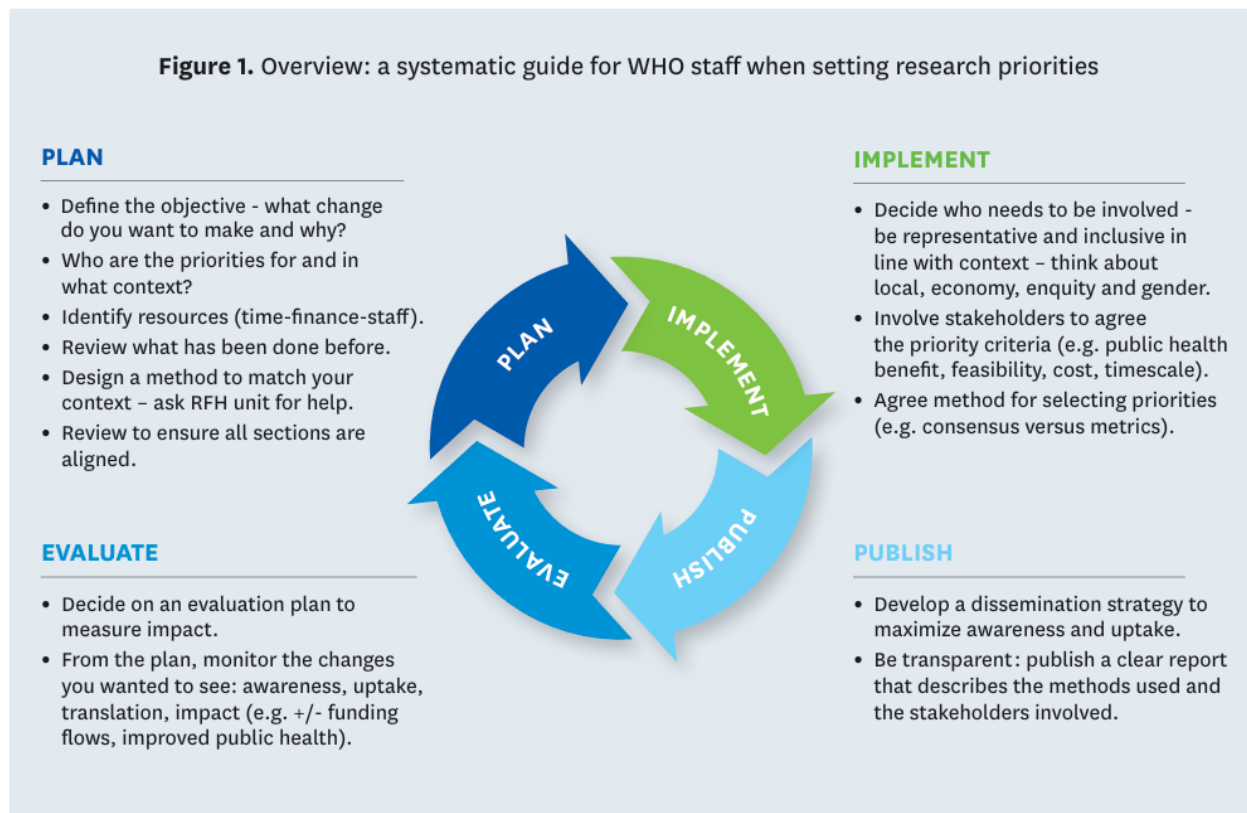


Figure S6: Framework for alignment to best practices (reproduced from A systematic approach for undertaking a research priority-setting exercise: guidance for WHO staff, 2020).