

III. Inscriptions

By Roger S.O. Tomlin

Wolfson College, Oxford University
roger.tomlin@wolfson.ox.ac.uk

A. Monumental¹

1. **Canterbury** (*Durovernum Cantiacorum*, TR 14862 57923) High Street, the Beaney Institute, Kent (Fig. 1). Fragment of oolitic limestone, probably Marquise stone, from a thin slab, 95 by 150 mm, 32.5 mm thick, found² unstratified in 2010. The top edge is original, but the others are broken. Incised: [...]M[...] | [...]NI [...] | [...]VM[...] | [...], probably *[D(is)]M(anibus) | [...]ni | [annor]um | [...]*. ‘To the Shades of the Dead (and) of [...]nus, (aged) ... years ...’

2. **Kelvedon** (*Canonium*, TL 864 190), Essex (Fig. 2). Four copper-alloy votive letters, c. 90–100 mm in height, found³ in 1971. Only one is complete: V. Another is a vertical stem terminating in a serif: most likely I, but possibly L or T. The other two are semi-circular fragments: one probably C (unless G); the other probably O (unless C, G or Q). Also found were two indeterminate fragments.

¹ Inscriptions on STONE (‘Monumental’) have been arranged as in the order followed by R.G. Collingwood and R.P. Wright in *The Roman Inscriptions of Britain* Vol. i (Oxford, 1965) and (slightly modified) by R.S.O. Tomlin, R.P. Wright and M.W.C. Hassall, in *The Roman Inscriptions of Britain* Vol. iii (Oxford, 2009), which are henceforth cited respectively as *RIB* (1–2400) and *RIB* III (3001–3550). Citation is by item and not page number. Inscriptions on PERSONAL BELONGINGS and the like (*instrumentum domesticum*) have been arranged alphabetically by site under their counties. For each site they have been ordered as in *RIB*, pp. xiii–xiv. The items of *instrumentum domesticum* published in the eight fascicules of *RIB* II (Gloucester and Stroud, 1990–95), edited by S.S. Frere and R.S.O. Tomlin, are cited by fascicule, by the number of their category (*RIB* 2401–2505) and by their sub-number within it (e.g. *RIB* II.2, 2415.53). Non-literate graffiti and graffiti with fewer than three complete letters have generally been excluded. When measurements are quoted, the width precedes the height.

All the Uley tablets have now (2024) been published by Oxford University Press in its series Oxford Studies in Ancient Documents, as R.S.O. Tomlin, *The Uley Tablets: Roman Curse Tablets from the Temple of Mercury at Uley (Gloucestershire)*. Included are seven tablets from the nearby temple site of Tarlton (Gloucestershire).

² During excavation by Canterbury Archaeological Trust (*Britannia* 42 (2011), 393). Tania Wilson and Luke Barber sent details and a photograph.

³ During the excavations published as K.A. Rodwell, *Prehistoric and Roman Settlement at Kelvedon* (CBA Research Report 63, 1987); the letters are mentioned on pp. 55 and 57, and illustrated on p. 62, as fig. 47 (see Fig. 2, above). They were found in pits associated with the small round building interpreted as a temple destroyed at the end of the second century. In another pit (p. 55) was found the Kelvedon curse tablet (*JRS* 48 (1958), 150, No. 3) addressed to Mercury, whose name includes the letters C, I and V.



Fig. 1. Canterbury, tombstone fragment (No. 1) (photo: Canterbury Archaeological Trust).

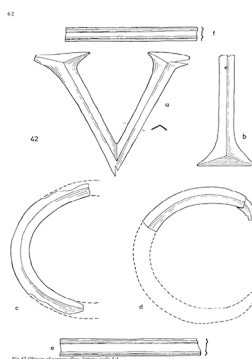


Fig. 2. Kelvedon, copper-alloy votive letters (No. 2) (drawing: Council for British Archaeology).



Fig. 3. Wall, inscribed building stone (No. 4) (photo: A.A. Round).

3. **Great Walsingham** (TF 94 38) Roman temple site, Norfolk. Copper-alloy votive letter, 18 by 46 mm, weight 9.3 g, found⁴ in the 1990s. Narrow V, with two studs behind for attachment.

4. **Wall** (*Letocetum*, SK 098 066), Staffordshire (Fig. 3). Reddish-brown sandstone building-stone, 0.38 by 0.11 m, found⁵ in 1977. The face is coarsely inscribed: CVINTI LI, *Cuinti LI*. '[?...] of Quintus ...'⁶

5. *ibid.* (Fig. 4). Reddish-brown sandstone building-stone, 0.43 by 0.12 m. Within a panel defined by two parallel lines above and below, thinly inscribed: ƆDIRVT[...], (*centuria*) D...⁷

⁴ By the metal-detectorist Dave Fox, whose collection was catalogued by Jean Bagnall Smith, 'Votive Objects and Objects of Votive Significance from Great Walsingham', *Britannia* 30 (1999), 21–56, where this item is No. 21 (pp. 32–4, with Pl. VIA). Three inscribed rings from the site (p. 32, Nos. 18–20) were reported in *Britannia* 25 (1994), 306, Nos. 37–9, but not this letter. *RIB I*, despite its sub-title 'Inscriptions on Stone', does include copper-alloy votive letters (*RIB* 53, 86, 198, 238, 239, 242, 308, 438, 997, 1071 and 2218), but they were excluded from *RIB III*. Those found since *RIB I* are *Britannia* 2 (1971), 289, No. 1 (Springhead); No. 4 (Old Harlow); 3 (1972), 353, No. 7 (Brigstock); 12 (1981), 379, No. 10 (Ivy Chimneys); 18 (1987), 367, No. 4 (Diddington); 21 (1990), 365, No. 1 (Pakenham); 29 (1998), 435, Nos. 3–5 (Wood Eaton); 32 (2001), 387, No. 3 (Dover); 388, Nos. 5–6 (Colchester); No. 8 (Great Chesterford); No. 9 (Hockwold cum Wilton); No. 10 (Alchester); 389, No. 11 (Wood Eaton again).

⁵ With the next item during the excavation noted in *Britannia* 9 (1978), 435–6, re-used in the foundations of the Hadrianic 'villa'. They are the 'rough inscriptions' mentioned there, 'to be reported later'. Graham Webster sent details including photographs. Said to be on loan to Birmingham City Museum.

⁶ The first letter is certainly C, not Q. [kw] has been reduced to [k] like *ecum* ('horse') in *RIB* II.5, 2491.151. V is rounded at the bottom like U. There is no sign of the expected centurial symbol to the left, nor indeed space for it, but perhaps it was incised on the adjoining stone. A building stone of 'the century of Quintus' is quite likely, but perhaps it is only a mason's signature, '(the stone) of Quintus'. Further to the right are two letters, unexplained. The first is more like L than C (incomplete), the second a vertical stroke. Perhaps a numeral, '51' or '101', but maybe an unfinished attempt at LEG, *leg(ionis)*, if not another name.

⁷ In form this is a centurial stone, the centurial sign a reversed C. But the centurion's name is difficult. The first letter is clearly D, its curve echoing that of the centurial sign. Followed by I (unless an incomplete E or F, or even T); then an angular R (unless K); then perhaps V (unless Λ), and T with a faint cross-stroke. There is ample space for more letters to the right including I for the genitive ending, but no good trace of them. Since *dirutus* ('ruined') is inherently unlikely, this might be a nomen abbreviated to its first letter or two, followed by a cognomen. For example **Di(dius) Rut[ilianus]* in the genitive, but there is no obvious candidate.



Fig. 4. Wall, inscribed building stone (No. 5) (photo: A.A. Round).



Fig. 5. (a) Whitley Castle, inscribed slab (No. 6) (photo: Gordon Monk); (b) detail of the lettering (photo: Elaine Edgar).

6. **Whitley Castle** (*Epiacum*, NY 69824 48683) Roman fort, Northumberland (Fig. 5). Buff sandstone slab, 0.32 by 0.23 m, tapering in thickness from 0.15 m, found⁸ in 2024. One face is coarsely incised: ζ ETA, perhaps *Geta*.⁹

⁸ In a field wall near the fort. Information and photographs from Lindsay Allason-Jones, Steve Bentley and Alastair Robertson. The slab was first photographed by Elaine Edgar, who retains it at Castle Nook Farm.

⁹ ETA is certain, A being made informally with a diagonal mid-stroke. But these three letters cannot be the initials of *tria nomina*, and hardly an abbreviated word or personal name; almost the only candidate is *Etacontius*, which occurs uniquely at Chester (RIB 559). But just to the left of E is a zigzag edge in the surface of the slab (see Fig. 5(b)) which might be the remains of an angular, shallowly-incised G. *Geta* would then suggest the younger son and colleague of Septimius Severus, who succeeded him as joint-emperor with his brother Caracalla when their father died at York in 211. Both brothers were then in Britain, prompting the conjecture that when Caracalla murdered Geta in December 211 and erased his name from inscriptions throughout the Empire, it was remembered in Britain; and that when Caracalla was honoured as sole Emperor in 213 by many British inscriptions, which included two at Whitley Castle (RIB 1202 and 1203), someone there felt impelled covertly to record the name of Geta.



Fig. 6. Chiseldon, silver ring bezel (No. 8) (photo: PAS).

7. **Birdoswald** (*Banna*, NY 6161 6625) Roman fort, Cumbria. Local red sandstone fragment, 0.14 by 0.21 m, 0.19 m deep, found¹⁰ in 1987–92. It is apparently part of the capital and die of an altar, the capital with a pattern of leaves carved in relief. All that survives of the inscription is two letters at the top of the die: [...]*OM* [...], [*I(ovi)*] *O(ptimo) M(aximo)* | [...]. ‘To Jupiter Best (and) Greatest ...’¹¹

B. Instrumentum domesticum

Berkshire

8. **Chiseldon**, Swindon (SU 17 79) (Fig. 6). Rectangular silver ring bezel, 10.9 by 9.1 mm, 5.2 mm thick, weight 2.94 g, found¹² in 2024. Incised retrograde: *VIRBO|NEVIV, uir bo|ne uiu(as)*. ‘Long life to you, good man.’¹³

Cumbria

9. **Carlisle** (*Luguvalium*, NY 397 561). Small off-cut of shoe leather, 47 by 103 mm, found¹⁴ in 1998–2001, incised with the letters: *C C M, C(aius) C(...)* *M(...)*¹⁵

¹⁰ During the excavations published by Tony Wilmott, *Birdoswald: Excavations of a Roman fort on Hadrian’s Wall and its successor settlements: 1987–92* (1997). The fragment is fully described on p. 316 (No. 280), but not illustrated. It is now stored by Tullie House, Carlisle (CALMG: 1999.862.280), but could not be located for photography.

¹¹ Many altars dedicated to Jupiter by the First Cohort of Dacians have been found at Birdoswald (*RIB* 1872–96; III, 3438), and this must be another. But if a letter has been lost to the right of *M*, then *D(olicheno)* could be restored, as in *RIB* 1896.

¹² By metal-detector, PAS ref. BERK-90474A. Information from Richard Hobbs and Sally Worrell.

¹³ After *B* there is almost no trace of *O* which, for lack of space, like the loop of *R* (which resembles ‘*K*’), was never completed. Neither of the ‘*C*’-like figures below should be seen as *O*, since they are linked by a horizontal stroke to divide the two lines of the inscription. *N* and *E* are not reversed, nor is *E* quite finished. Final *-AS* was omitted, again for lack of space. This same legend is found on silver spoons in the Thetford Treasure (*RIB* II.2, 2420.47) and the Hoxne Treasure (*Britannia* 25 (1994), 308, No. 88), which confirms that *uir bone* is a general invocation, not the vocative of a personal name **Virbonus*. Since it is incised here retrograde, it would have greeted the recipient when the ring was used as a signet.

¹⁴ With the next two items during excavation by Carlisle Archaeology for the city’s Millennium Project. They were fully published by David Shotton in *The Carlisle Millennium Project: Excavations in Carlisle, 1998–2001* (2009), Vol. II, 831, but not reported to *Britannia*.

¹⁵ The initials of the tanner or supplier, like others in *RIB* II.4, 2445, but this is the first instance of *C C M*.



Fig. 7. Stanwix, eight lead sealings (including Nos. 12–17) (photo: Anna Giecco for Wardell Armstrong).

10. *Ibid.* Small off-cut of leather, 27 by 125 mm, crudely incised with two sets of letters, now incomplete: (a) C C M, or possibly C V M. (b) C C [...]¹⁶

11. *Ibid.* Small off-cut of leather thought to be from a tent, 94 by 129 mm, impressed with the stamp: S ◦ D ◦ V, S(extus) D(...) V(...)¹⁷

12. **Stanwix** (*Uxelodunum*, NY 399 567) Roman fort and *uicus* (Fig. 7, bottom left, not numbered). Lead sealing found¹⁸ in c. 2024, impressed on both faces with letters moulded in

¹⁶ Again, the initials of the tanner or supplier, in both (a) and (b) probably the same as in the previous item.

¹⁷ Illustrated by David Shotter (n. 14 above), pl. 223, who doubted that the die was the same as that which stamped the same initials on a piece of leather found at Newstead (*RIB* II.4, 2445.12), since 'the Carlisle stamp is of superior execution'. But a new photograph of the Newstead stamp (Fig. 41 below, with Add. (c)) shows that the letters are finer than they were drawn in *RIB*, and much like those in the Carlisle stamp. It is still uncertain that V in Newstead has the well-defined serifs of V in Carlisle but, as David Shotter noted, both stamps share an unusual feature: only the first of their two interpuncts is at mid-letter height. So they are probably from the same die.

¹⁸ By a local resident while gardening, and now in the care of Frank Giecco, who sent details and a photograph. Its obverse and reverse dies are both the same as those of the next item and of *Britannia* 54 (2023),

relief. Obverse: $\overline{\text{ALĒ}}$ PE, *al(a)e Pe(trianaē)*. ‘(Sealing) of the *ala Petriana*.’¹⁹ Reverse, below a crescent: ANC, probably *A(ulus) N(...)* C(...). The name of a decurion, abbreviated.²⁰

13. *Ibid.* (Fig. 7, No. 3324). Carlisle Cricket Club, the Roman bath-house. Lead sealing found²¹ in 2017/22, impressed on both faces with letters moulded in relief. Obverse, with a ‘star’ above, the lower ‘star’ now lost: $\overline{\text{ALĒ}}$ PE, *al(a)e Pe(trianaē)*. ‘(Sealing) of the *ala Petriana*.’ Reverse, below a crescent: ANC, probably *A(ulus) N(...)* C(...). The name of a decurion, abbreviated. Both dies are the same as in the previous item.

14. *Ibid.* (Fig. 7, No. 3415). Lead sealing impressed on both faces with letters moulded in relief. Obverse: standing figure of Victory between the letters L and VI, *l(egionis) VI*. ‘(Sealing) of the Sixth Legion’. Reverse: GC ◦ SE, probably *G(aius) C(aledonius) S(e)cundus*.²²

15. *Ibid.* (Fig. 7, No. 3320; Fig. 8). Lead sealing impressed on both faces with letters moulded in relief. Obverse, above a palm branch: $\overline{\text{VEX}}$ [.] | VÇÇ, *uex(illatio) ...*²³ Reverse: rectangular die, almost illegible.²⁴

16. *Ibid.* (Fig. 7, No. 2344). Half of a lead sealing impressed on one face. Below a ‘star’, H[...]|D, perhaps *H(...)* [R(...)] | *d(ecurio)*.²⁵

17. *Ibid.* (Fig. 7, No. 3348). Unusually small round lead sealing, impressed on one face: M²⁶

18. *Ibid.* Hypocaust of the Roman bath-house. Ninety more square tiles were found²⁷ in early 2025, all still in place, impressed with the stamp: $\overline{\text{IMP}}$, probably *imp(eratoris)*. ‘(Property) of the Emperor.’

435, No. 13 (Stanwix), but their condition varies. These can be compared with it in Fig. 7, Nos. 3324 and 433 respectively. There is a fourth sealing of the *ala*, also from Stanwix (*RIB* II.1, 2411.84), but both its dies are different.

¹⁹ The letters A, L and E are ligatured together just as in the other two sealings of the *ala* in Fig. 7 (Nos. 3324 and 433), but there is almost no trace of the ‘star’ above and below.

²⁰ This reverse explains that of No. 433 already mentioned (*Britannia* 54 (2023), 435, No. 13), which was mis-read as AXC | ◊ because it was not seen to be at right-angles to the obverse. Its reading should now be corrected to [A]NC.

²¹ With the next five items during excavation by Wardell Armstrong Archaeology directed by Frank Giecco, who sent details and photographs. For the site and excavation see *Britannia* 53 (2022), 412–15, where fig. 7 shows that the site is better called ‘Stanwix’ than ‘Carlisle’ (as in *Britannia* 54 (2023), 435), since it is north of the river and just south-east of Stanwix fort and *uicus*.

²² *Gaius* is more often abbreviated to C, and the initial G might be C with a medial stop, but it looks like G, and such a ‘stop’ would be quite unlike the medial point after C. The identification cannot be certain, but this is quite likely the legionary centurion Caledonius Secundus, *coh(ortis) VI* (legion not stated), in *RIB* 1679, 1854; III, 3379, 3385.

²³ V and E are ligatured, and X quite clear, so this must be the first instance of a lead sealing of a *uex(illatio)*, a detachment taken from a military unit. The unit’s abbreviated name would have followed, but this is difficult. In Fig. 8(a), VEX is apparently followed by part of another letter, perhaps I or A. In the line below, V is clear enough, followed by C (seen better in Fig. 7) and part of another letter, perhaps the curve of O. These traces do not suggest a legion or cohort, but do allow the conjecture of A | VOC for *a(lae) Voc(ontiorum)*, given that the die-cutter working retrograde confused C with O. Three sealings of this *ala* are known, *RIB* II.1, 2411.70 and 90; *Britannia* 47 (2016), 393, No. 6. At Newstead it is attested once by the altar *RIB* 2121, whereas four altars are dedicated by centurions of the Twentieth Legion (*RIB* 2120, 2122, 2123 and 2124), which might suggest the fort was garrisoned by detachments of both *ala* and legion, since *RIB* 2121 is dedicated by a decurion, not the prefect.

²⁴ Three or four incomplete letters, the abbreviated name of a decurion; perhaps P (with incomplete loop), A (damaged) and D (only two verticals), for *P(...)* *A(...)* *d(ecurio)*.

²⁵ Compare *RIB* II.1, 2411.84 (Stanwix), the fourth sealing of the *ala Petriana* already mentioned, its reverse reading HRD above two ‘stars’ and a crescent, probably *H(...)* *R(...)* *d(ecurio)*. This is not the same die, but both dies may refer to the same decurion.

²⁶ Presumably a personal name abbreviated to its initial letter, *M(...)*. Two of the eight sealings in Fig. 7 have already been published: No. 433, as noted above in n. 20, and No. 817 as *Britannia* 54 (2023), 435, No. 14: FL FĒ[.] | D, probably *Fl(avius) Fe[l(ix)] | d(ecurio)*.

²⁷ During excavation by Wardell Armstrong Archaeology directed by Frank Giecco, who sent details including a photograph. Twenty-nine others have already been found there: *Britannia* 54 (2023), 438, No. 17 (with fig. 17). For this stamp elsewhere in Carlisle, see *RIB* II.5, 2483 (vi–li).



Fig. 8. Stanwix, lead sealing (No. 15), (a) obverse, (b) reverse (photos: Frank Giecco).

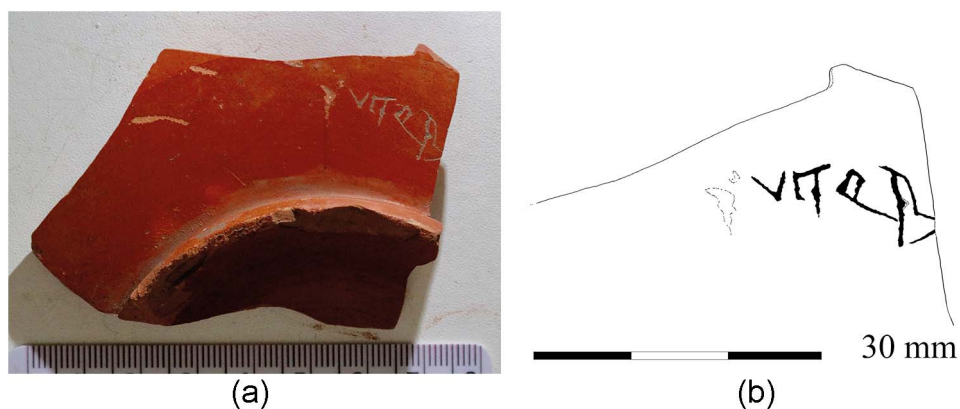


Fig. 9. Derby, Strutt's Park, samian graffito (No. 19) (photographed and drawn by R.S.O. Tomlin).

Derbyshire

19. **Derby** (SK 349 373), Strutt's Park Roman fort (Fig. 9). Base sherd of a samian dish (Dr. 18) found²⁸ in 2011 in an early-Flavian pit. Neatly scratched on the wall above the foot-ring, in cursive letters after firing: VITOR[1]\$, *Vi<c>tor[i]s*. '(Property) of Victor.'²⁹

²⁸ During excavation in Belper Road by York Archaeology, to be reported in *Derbyshire Archaeology Journal*. Details from Steven Malone, who made the sherd available. It will be deposited in Derby Museum.

²⁹ Below cursive R is the lower tip of S, exaggerated as the final letter; and between them ample room for I, now lost. This layout would have resembled that of the amphora potter Victor's signature, for which see *Britannia* 55 (2024), 424, Fig. 18, *Victoris*. The owner wrote his name as 'Vitor', a form found quite often outside Britain as *Vitor* and *Vitorius*, but not actually a different name; only a sub-standard spelling of *Victor* ('victorious'), a very common name. [kt] has been reduced to [t], a shift hardly found in Britain, but compare the tile stamp RIB II.4, 2460.92, LEG VI VIT PF, with VIT for VI<C>T(RIX).



Fig. 10. Topsham, black-burnished ware graffito (No. 20) (photo: Wessex Archaeology).

Devon

20. **Topsham** (SX 963 895) (Fig. 10). Seven conjoining sherds of a black-burnished cooking pot (south-east Dorset BB1, late-third/early-fourth century), found³⁰ in 2024. On the shoulder, coarsely incised after firing: C CAN[...], probably C(...) Can[...]³¹

Co. Durham

21. **Binchester** (*Vinovia*, NZ 2095 3135), Roman fort and *uicus* (Fig. 11, sf 1218). Lead sealing, 19.33 by 12.48 mm, 4.99 mm thick, weight 5.58 g, found³² in 2009–17. Moulded letters in relief within a rectangular panel: D ◦ N, *d(omini) n(ostri)*. ‘(Sealing) of Our Lord (the Emperor).’³³

22. *Ibid.* (Fig. 11, sf 1221). Lead sealing, 15.53 by 6.52 mm, 4.09 mm thick, weight 3.67 g. Moulded letters in relief within a rectangular panel: D N, *d(omini) n(ostri)*. ‘(Sealing) of Our Lord (the Emperor).’

23. *Ibid.* (Fig. 11, sf 1239). Lead sealing, 14.04 by 7.25 mm, 2 mm thick, weight 1.46 g. Moulded letters in relief within a rectangular panel: D Δ N, *d(omini) n(ostri)*. ‘(Sealing) of Our Lord (the Emperor).’

³⁰ During excavation by Wessex Archaeology for Taylor Wimpey. Information and photographs from Kevin Trott. It will go to the Royal Albert Memorial Museum, Exeter.

³¹ The first C is much larger than the second C, and somewhat removed from it, which would suggest it was a name abbreviated to its initial letter, whether the praenomen *C(aius)* or a nomen *C(...)*. The fourth letter, just before the broken edge, is a vertical stroke with possible trace of a diagonal stroke after it, thus N or M. The letters CAN or CAM would then begin a nomen or cognomen in *Can-* or *Cam-*, with the rest of it now lost.

³² With the next ten items during excavation by Durham University, Durham County Council and others, now stored in the Department of Archaeology, University of Durham, from where Chris Gerrard made them available with note of their weight and dimensions. Ten other sealings were found, none with two moulded faces. Three of these are so worn as to be illegible; three are figural without lettering (one a standing soldier with spear and shield); and four have two or three initials but are otherwise unidentified. They will all be published in Chris Gerrard’s final report.

³³ Many lead sealings with only the letters D N within a rectangular panel have been found since 1986, the cut-off date for *RIB* II.1, 2411, which has none (but compare 2411.24, where the letters identify an imperial bust). There are three in the Piercebridge river deposit: see Hella Eckardt and Philippa J. Walton, *Bridge over Troubled Water: The Roman Finds from the River Tees at Piercebridge in Context* (2021), 109–10, Nos. 1–3, where the commentary cites another three from South Shields including *RIB* II.1, 2411.24, one from Corbridge, and one from Colchester. To these add the two from Aldborough, No. 51 below (with note). The imperial title *d(ominus) n(oster)* is first used formally in the coinage of Diocletian and his successors, but was used informally in the third century, so it cannot be dated closely.

The five D N sealings from Binchester (Nos. 21–25) may be compared in Fig. 11, where it appears that sf 1218 and 7004 come from the same die, and 1239 and 2837 probably do. Their letters are very close in style, if not quite the same, but this is probably due to a difference in impression rather than different dies. sf 1221 comes from a third die.

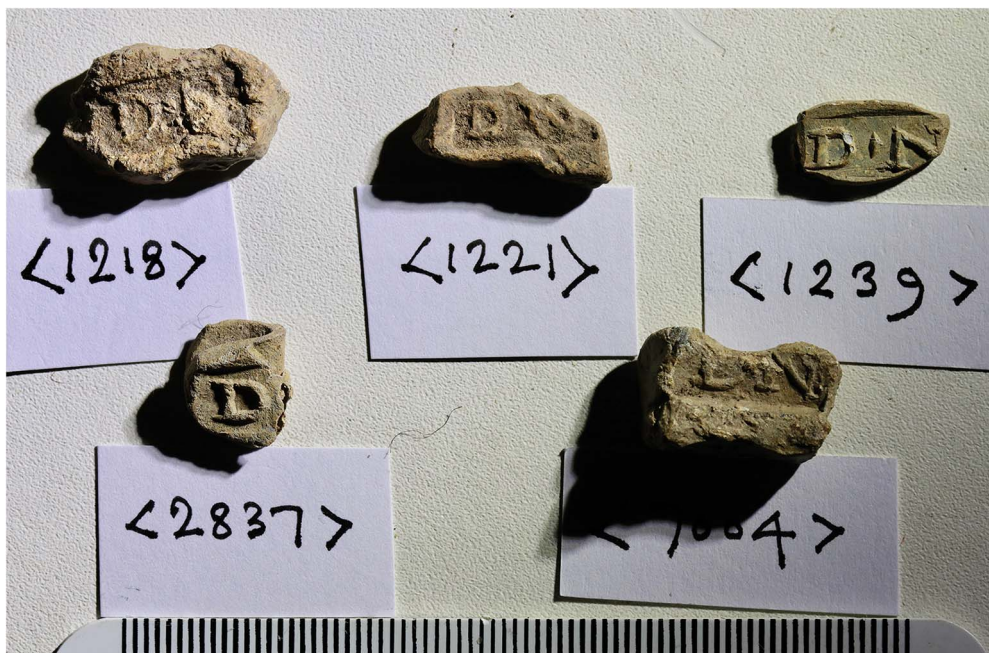


Fig. 11. Binchester, five D N lead sealings (Nos. 21–25) (photo: R.S.O. Tomlin).

24. Ibid. (Fig. 11, sf 2837). Lead sealing folded upon itself, 9.62 by 10.95 mm, 3.39 mm thick, weight 2.00 g. Moulded letters in relief within a rectangular panel: D N, *d(omini) n(ostri)*. '(Sealing) of Our Lord (the Emperor).'³⁴

25. Ibid. (Fig. 11, sf 7004). Incomplete lead sealing, 16.22 by 10.28 mm, 6.55 mm thick, weight 9.08 g. Moulded letters in relief within a rectangular panel: D ° N, *d(omini) n(ostri)*. '(Sealing) of Our Lord (the Emperor).'³⁵

26. Ibid. (Fig. 12). Lead sealing, 23.38 by 17.05 mm, 5.06 mm thick, weight 8.25 g. Moulded letters in relief within an oval panel. Obverse: $\overline{AL} \overline{II} A|S$, *al(ae) II A|s(turum)*. Reverse: H T D, *H(... T(... d(ecurio)*. '(Sealing) of the Second *ala Asturum*. H(... T(... decurion.'³⁶

27. Ibid. (Fig. 13). Lead sealing, 21.37 by 11.55 mm, 5.43 mm thick, weight 5.55 g. Moulded letters in relief within a rectangular panel. Obverse: A°V°TT, *a(lae) V<e>tt(onum)*.³⁷ Reverse: S ° L ° D retrograde, *S(... L(... d(ecurio)*. '(Sealing) of the *ala Vettonum*. *S(... L(... decurion*.'³⁸

³⁴ The break where it is folded has removed any evidence of a medial point. As already noted, this is probably from the same die as sf 1239.

³⁵ As already noted, this is from the same die as sf 1218.

³⁶ sf 20410. For other sealings of the *ala II Asturum*, with the initials of other decurions, see *RIB* II.1, 2411.82 (Corbridge) and 83 (Carlisle); *Britannia* 26 (1995), 382, No. 15 (Chesters); *Britannia* 51 (2020), 497, No. 34 (Catterick). The *ala* was posted to Chesters in the Antonine period, where it remained.

³⁷ The decurion's initials are those of a decurion of the *ala Vettonum* in the Piercebridge river deposit (Eckardt and Walton (n. 33 above), 116, No. 20), so this *ala* should be read here. There is apparently a medial point between both A and V, and V and T, with the second point doing duty for the medial horizontal stroke that would have ligatured E to V and T. There is no real sign of this horizontal stroke, but TT (double) is made with exaggerated bottom-serifs, as if to suggest E.

³⁸ sf 5860. As already noted, the *ala* and the decurion are the same as in a sealing found at the next fort to the south, Piercebridge. The obverse dies are different, but the reverse dies look identical, given that a third medial point (before S) has not registered in the Binchester sealing. The *ala Vettonum* is well attested at Binchester by *RIB* 1028, 1032, 1035; III, 3260 and *Britannia* 45 (2014), 434, No. 4. See also the next two items.



Fig. 12. Binchester, lead sealing (No. 26), (a) obverse, (b) reverse (photos: R.S.O. Tomlin).



Fig. 13. Binchester, lead sealing (No. 27), (a) obverse, (b) reverse (photos: R.S.O. Tomlin).



Fig. 14. Binchester, lead sealing (No. 28), (a) obverse, (b) reverse (photos: R.S.O. Tomlin).

28. Ibid. (Fig. 14). Lead sealing, 23.62 by 20.83 mm, 6.58 mm thick, weight 11.03 g. Moulded letters in relief within an oval panel. Obverse: ALE | VET above a palm branch, *al(a)e Vet(tonum)*. Reverse: VLP KL above three 'stars' and a crescent, below a palm branch, *Ulp(ius) Kl(...)*. 'Sealing) of the *ala Vettonum*. Ulp(ius) Kl(...), decurion.'³⁹

29. Ibid. (Fig. 15). Lead sealing, 23.08 by 19.56 mm, 4.21 mm thick, weight 9.71 g. One face is impressed with moulded letters in relief within an oval panel: star | VLP M | star D star, *Ulp(ius) M(...)* | *d(ecurio)*. 'Ulp(ius) M(...), decurion.'⁴⁰

³⁹ sf 4562. The same *ala* as in the previous item, but the dies are different. KL is for an abbreviated cognomen usually written as *Cl(...)*, such as *Clarus* or *Claudianus*. The first letter, with its two short diagonals at mid-letter height, is K, not F.

⁴⁰ sf 16060. The decurion's *ala* is not given, since his sealing was not moulded within the usual matrix that would have made the obverse impression. However, the findspot at Binchester and comparison with the previous item suggest that it was probably the *ala Vettonum* again. This too is decorated with six-pointed 'stars', and VLP is ligatured in just the same way.



Fig. 15. Binchester, lead sealing (No. 29) (photo: R.S.O. Tomlin).



Fig. 16. Binchester, lead sealing (No. 30) (photo: R.S.O. Tomlin).



Fig. 17. Binchester, lead sealing (No. 31) (photo: R.S.O. Tomlin).

30. Ibid. (Fig. 16). Lead sealing, 19.03 mm by 12.86 mm, 7.36 mm thick, weight 7.39 g. One face is impressed with moulded letters in relief within a rectangular panel: DEC | AR ° h., probably *dec(urio) | Ar(...) H[o](...)*. ‘Ar(...) Ho(...), decurion.’⁴¹

31. Ibid. (Fig. 17). Lead sealing, a narrow rectangular strip 33.75 mm by 9.63 mm, 4.57 mm thick, weight 9.94 g. One face is impressed with four letters, not moulded in relief but incised: A | L \ S | B, *A(...) L(...)* and *S(...) B(...)*⁴²

⁴¹ sf 828. There is a medial point after R, but not after A, indicating that the decurion’s nomen was abbreviated to its first two letters, for example *Ar(rius)*. This would have been balanced by two letters for his cognomen, but the reading is difficult. The first letter is apparently a lower-case H complete, with no sign of being a damaged K or R; then the curve of an incomplete letter, necessarily a vowel, and thus O. As with the previous item, the decurion’s *ala* is not specified.

⁴² sf 3206. Two pairs of letters separated by a diagonal stroke; within each pair, the letters are separated by a short vertical medial stroke. The incision of the letters and their format is most unusual, quite unlike any military sealing. Perhaps the only British parallel is a narrow lead strip at Piercebridge, No. 34 in the river deposit cited above (n. 33) and now *Britannia* 49 (2018), 441, No. 30, bearing the moulded letters G Δ I Δ ET Δ C; understood as the abbreviated names of two business partners. The same may be suggested of the present item.

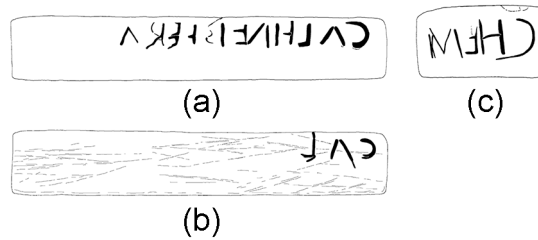


Fig. 18. Colchester, oculist's stamp (No. 32), (a) long edge, (b) other long edge, (c) short edge (drawn by R.S.O. Tomlin from photographs by Colchester Archaeological Trust).

Essex

32. **Colchester** (*Camulodunum*, TL 991 253), St Mary's Hospital, Balkerne Hill (Fig. 18). Oculist's *collyrium* stamp, found⁴³ in 2001, a rectangular die of fine-grained greenish stone, 46.7 by 15.3 mm, 8.6 mm thick, inscribed on three of its four edges in capital letters retrograde. (a) One long edge: CALHNEBHERA⁴⁴, *Cal(...)* ?*h(ygra)* NEB ?*h(ygra)* ERA. The practitioner's name abbreviated, and two eye salves.⁴⁵ (b) Other long edge: CAL. The practitioner's name abbreviated again. (c) One short edge: CHEM, (*ad*) *chem(osim)*. 'For chemosis [inflammation of the cornea]'.⁴⁶

33. **Colchester** (*Camulodunum*, TL 99 25) (Fig. 19). Sherd from the shoulder of a Dressel 20 amphora, found before 2001.⁴⁷ Incised after firing: GIIM, *Gem(inus)*.⁴⁸

⁴³ During excavation by Colchester Archaeological Trust (*Britannia* 33 (2002), 325), sf 455. Information from Nina Crummy, who sent photographs and rubbings. She describes it in P. Ottaway (ed.), *A Victory Celebration: Papers on the Archaeology of Colchester and Late Iron Age-Roman Britain Presented to Philip Crummy* (2006), 61, with fig. 30.2.

⁴⁴ The letters seem to have been first lightly scratched as a guide to the die-cutter, who failed to complete them all. Hence the faint loops of B and R, the vestigial top-stroke of the second E, and especially both H's with their two vertical strokes but no linking horizontal; only a short mid-height stroke which does not meet the second vertical.

⁴⁵ Most oculists' stamps have a two-line inscription naming the practitioner, his remedy and the eye-condition (for examples see *RIB* II.4, 2446), but inscription (a) is rather short, with its first three letters being repeated in (b), and the eye-condition specified in (c). This suggests that CAL should be taken separately, as the practitioner's name abbreviated, and that his remedy (or remedies) was also abbreviated, with the eye-condition being removed to (c). CAL might be *Cal(listus)* or *Cal(listianus)*, both found as the names of oculists (Gaius Iulius Callistus, *CIL* xiii 10021, 93; L(ucius) A(...) Callistianus, *Carte Archéologique de la Gaule* 25/90 (2003), p. 219, Fig. 188), but it is unusual for a practitioner to be attested by more than one stamp.

The remedies are more difficult. The repetition of H, and the impossible sequence HN, suggests it is a one-letter abbreviation, an attractive possibility being *h(ygra)*, which Marcellus Empiricus in his chapter of remedies for eye-conditions (*De Medicamentis* 8) uses in the sense of 'eye salve' (*medicamentum liquidum*) or *collyrium*. But the three succeeding letters, NEB and ERA, cannot be resolved by reference to any of his recipes or the remedies found in other *collyrium* stamps.

⁴⁶ CHEM is not a Latin sequence, but the Greek word $\chi\eta\mu\omega\iota\varsigma$ abbreviated, found in Greek medical writers and translated by Liddell and Scott as 'an affection of the eyes, when the cornea swells like a cockle-shell ($\chi\eta\mu\eta$) so as to impede sight'. In modern terms this is 'keratitis' or a corneal ulcer. It is only the second occurrence of the word in Latin, the first being an oculist's stamp found in Coca, central Spain (*AE* 1976, 342): *Corneli Alcimi turinum at(=ad) chemosim | et at(=ad) suppurationes | Corneli Al[ci]mi icarium at(=ad) claritam et at(=ad) suffus(iones)*. It names Cornelius Alcimus and his two remedies, *turinum* [salve of frankincense] for chemosis and 'suppurations' (pus), and *icarium* for clear vision and cataracts.

⁴⁷ When it was catalogued by Colchester Museums as COLEM: 2001.99.4. Glynn Davis sent photographs.

⁴⁸ Below GIIM are two deeply incised lines meeting at an acute angle; not a letter, but perhaps an identifying mark by another owner. To the right, and abutting the broken edge, is the letter C or G, perhaps for *G[eminus]* again.

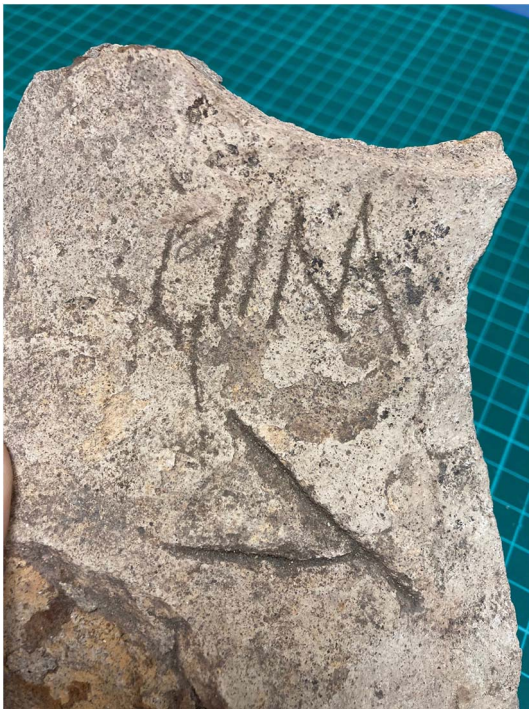


Fig. 19. Colchester, amphora graffito (No. 33) (photo: Colchester Museums).

34. **Colchester** (*Camulodunum*, TM 00117 24391), Garrison GAL Area (Fig. 20). Three conjoining sherds from the wall of a large storage jar, found⁴⁹ in 2010, incised after firing: [...].VEDO, probably [A]vedo.⁵⁰

Kent

35. **Richborough** (*Rutupiae*, TR 32 60) Roman fort (Fig. 21). Silver finger-ring, 24 by 25 mm, maximum width 8 mm, weight 6.9 g, found⁵¹ 'during the 1920s and 1930s'. Brancaster type, late-Roman.⁵² Incised on the rectangular bezel, 8 by 10 mm, a monogram formed by five capital letters in a clockwise sequence: BASIA, *basia* (me). 'Kiss (me).'⁵³

⁴⁹ During the excavations noted in *Britannia* 43 (2012), 325. Steve Benfield sent details to Mark Hassall, who made the rubbing used for Fig. 20.

⁵⁰ The first (incomplete) letter is more like I than A, but a name *Ivedo is not attested, whereas *Avedo* has already occurred at Colchester (*RIB* II.8, 2503.197).

⁵¹ In the Bushe-Fox excavations noticed in *Antiquaries Journal* 56 (1976), 241. The ring and its reading are published there by Martin Henig, *ibid.* 242–3. He was sent a drawing by Richard Wright, with whom he discussed the reading, but it was not included in *RIB* II.3, 2422 (finger-rings). It is now in the Richborough collection (No. 7350352) at Dover Castle, photograph and dimensions sent by Phil Smither.

⁵² No. 52 in the catalogue of J. Gerrard and M. Henig, 'Brancaster type signet rings: A study in the material culture of sealing documents in Late Antique Britain', *Bonner Jahrbücher* 216 (2017), 225–50. Noted on p. 236, with a drawing in pl. 6.

⁵³ The verticals of B and I terminate in a short, inward diagonal; the cross-bar of A is a short V-shaped 'chevron'. *Basia* is a rare personal name, but here it is a verb in the imperative, like the rings inscribed with *ama* in various ways for 'love (me)'; in Britain, *RIB* II.3, 2422.2, 18, 47 and 48.

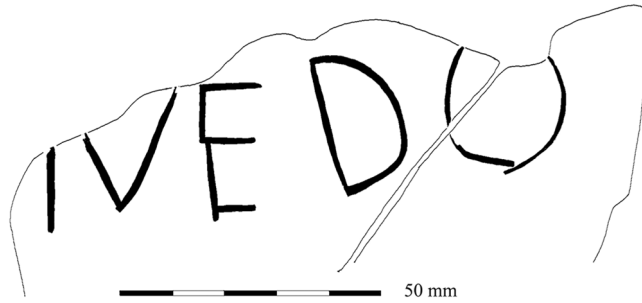


Fig. 20. Colchester, coarseware graffito (No. 34) (drawn by R.S.O. Tomlin from a rubbing by Mark Hassall).



Fig. 21. Richborough, silver ring with monogram (No. 35) (photo: English Heritage).

Leicestershire

36. **Narborough**, Copt Oak Road (SK 531 977). Samian sherd found⁵⁴ in 1983, said to be ‘inscribed on the inside with the graffito DEO’.⁵⁵

Lincolnshire

37. **Ancaster** (SK 98 44) (Fig. 22). Gold and silver bezel of a finger-ring, probably late-Roman Brancaster type.⁵⁶ Thin gold disc, 8.82 mm in diameter, soldered onto a larger silver disc now incomplete, total weight 0.91 g, found⁵⁷ in 2024. Incised with a man’s face and shoulders facing left, surrounded by the retrograde letters: PECTACVS, *Pectacus*.⁵⁸

⁵⁴ During the excavation noted in *Britannia* 15 (1984), 290.

⁵⁵ In the interim report by John Lucas in *Leicestershire Archaeological Society Transactions* 58 (1982–3), at p. 76. Finds were deposited with Leicestershire Museums, but extensive inquiries by Helen Sharp have not located this sherd, which was not drawn or photographed. Its graffito, whether made before or after firing, can hardly have dedicated the vessel to a god (*deo*) un-named. DEO is probably an abbreviated personal name, but unless it is a misreading of DEC, no name can be suggested. Perhaps a unique name like *Deomiorix* (author of the Bath curse tablet *Tab. Sulis* 99); or a *Dio*- name mis-spelt, for which compare *Deodorus*, uniquely in *CIL* v 2891.

⁵⁶ For Brancaster rings with one or two human busts on the bezel, some with lettering, see Gerrard and Henig (n. 52 above), 232–4. Another good parallel is *Britannia* 45 (2014), 446, No. 28, a silver disc with diademed head facing right, with the retrograde legend ANTONI VIVAS IN DEO.

⁵⁷ By metal-detector, PAS ref. LIN-9CBF81. Lisa Brundle, county Finds Liaison Officer, sent a photograph and other details.

⁵⁸ This personal name is otherwise unattested, but is probably derived from the same element as the rare name *Pectillus* (*RIB* 307 and *Tab. Uley* 83).



Fig. 22. Ancaster, gold and silver ring bezel (No. 37) (photo: PAS).



Fig. 23. Scredington, silver ring bezel (No. 38) (photo: PAS).

38. **Scredington** (TF 094 405) (Fig. 23). Square bezel of a silver finger-ring, 16.28 by 14.72 mm, 1.99 mm thick, weight 2.19 g, found⁵⁹ in 2024. Incised: DEO | TOT, *deo* | *To(u)t(ati)*. 'To the god Toutatis.'⁶⁰

North Lincolnshire

39. **Roxby cum Risby** (SE 92 15) (Fig. 24). Copper-alloy flat-sided blade tapering to a point now broken, perhaps a nail-cleaner, 48 by 8 mm, found⁶¹ in 2024. Crudely incised: DESSIMAGLVSFICIT, *Dessimaglus f<e>cit*. 'Dessimaglus made (this)'.⁶²

⁵⁹ By metal-detector, PAS ref. LEIC-A19B9B. Details and photograph from Megan Gard, Finds Liaison Officer for Rutland. It is currently with her at Rutland County Museum, but its final destination is unknown.

⁶⁰ More than seventy TOT rings, mostly of silver, have now been found, especially in Lincolnshire: see *Britannia* 50 (2019), 504, Nos. 16–19 (with note of Daubney's catalogue); 51 (2020), 485, No. 17 and 494, No. 29; 52 (2021), 482, No. 32; and No. 50 below (Elloughton-cum-Brough). The present item, except for one from the Fulbeck area (No. 26 in Daubney's catalogue, read as DLO | TOT), is the first in which TOT is preceded by DEO. It confirms that TOT rings were dedicated to the god, not intended for use as signets. Compare the rings dedicated to Mercury as 'god' (*deo*) with his name likewise abbreviated: *RIB* II.3, 2422.20 (DEO | MER); 2422.51 with *Britannia* 48 (2017), 486, Add. (c) (D ME); *Britannia* 27 (1996), 451, No. 29 (DEO | MER); *Britannia* 48 (2017), 477, No. 42 (D ME).

⁶¹ PAS ref. NLM-2E0C02.

⁶² The 'wheel'-pattern at the broad end is followed by a curved incision which has obscured the first letter of the underlying graffito. After E, the first S is angular and incomplete. A is ligatured within M by a diagonal cross-stroke. E of *fecit* was never completed, and only the upper curve remains of C. The name *Dessimaglus* is otherwise unattested, but must combine the Celtic name-element *maglus* ('lord') with the element that lies behind the name *Dessius* borne by a samian potter (B.R. Hartley and B.M. Dickinson, *Names on Terra Sigillata*, Vol. 3 (2008), s.v. *Dessius*).



Fig. 24. Roxby cum Risby, copper-alloy blade (No. 39) (photo: PAS).

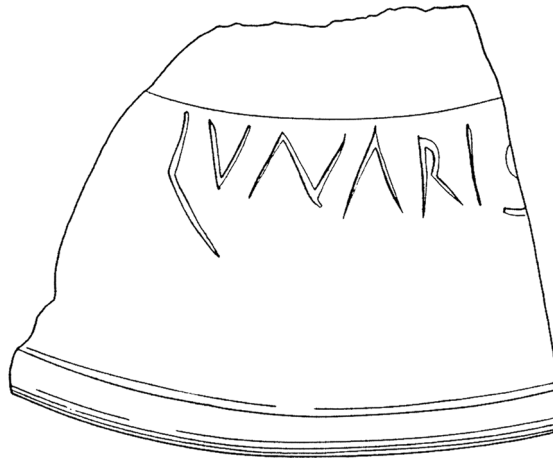


Fig. 25. Scole, samian graffito (No. 40) (drawing: Norfolk Archaeological Unit).

Norfolk

40. **Scole** (*Villa Faustini*, TM 146 788) (Fig. 25). Samian rim sherd found⁶³ in 1993–4. Incised after firing on the wall: LVNARIS, *Lunaris*.⁶⁴

⁶³ During the excavations by Norfolk Archaeological Unit published by Trevor Ashwin and Andrew Tester, *A Romano-British Settlement in the Waveney Valley: Excavations at Scole, 1993–4* (2014). Sixty-two graffiti on coarseware and thirty-one on samian are noted briefly at pp. 297–8, but only this one is illustrated (fig. 6.32, reproduced in Fig. 25 above). Almost all the others are X-like ‘crosses’, notches or single letters/numerals, but a coarseware beaker is said (improbably) to bear the retrograde name ‘CYKINY’.

⁶⁴ This cognomen is well attested, but not very common; other instances in Britain are all from the north: *RIB* 786 (Brougham); 620 (Carrawburgh); *Britannia* 46 (2015), 392, No. 10 (region of Durham); and *JRS* 11 (1921), 102 (Bordeaux), an altar dedicated by a man from York.



Fig. 26. Sporle with Palgrave, copper-alloy ring bezel (No. 41) (photo: PAS).

41. **Sporle with Palgrave** (TF 848 113) (Fig. 26). Part of a copper-alloy finger-ring reported⁶⁵ in 2023. The oval bezel is incised: SSS⁶⁶

Northumberland

42. **Vindolanda** (NY 769 663) (Fig. 27). Three conjoining fragments of a stylus writing-tablet, 112 by 30 mm, found⁶⁷ in 1987. All four edges are broken; the left edge, although still straight, has lost its raised borders front and back. (a) One face is divided by the broad central groove for the witnesses' seals to a legal document, but was re-used to write this address in cursive letters: (left panel) *Coris / Rumano / [...]* (right panel) *uenā[tor]i / [...]*. 'At Coria [Corbridge], to Rumanus the huntsman ...'⁶⁸ (b) The other face is inscribed with five lines of cursive letters, but they are a palimpsest and incomplete to the right. A few words are legible, including *ut remittas* ('that you may send'), but no continuous text.⁶⁹

⁶⁵ PAS ref. LVPL-22C604. Details of this and three other finger-rings (Nos. 43, 50 and 53 below) were sent by Sally Worrell.

⁶⁶ For other copper-alloy finger-rings incised with SSS, see *Britannia* 40 (2009), 355. No. 99 (with note); 52 (2021), 466, No. 3 (with note) and 481, No. 29. As suggested there, despite not having a medial line, they are probably 'Chnoubis' amulets.

⁶⁷ During excavation by the Vindolanda Trust directed by Robin Birley. It is now in the British Museum (1988, 1005.279), where it was photographed in 2022 by Alexander Meyer, Alex Mullen and myself, with financial support from the Social Science and Humanities Research Council of Canada and the European Research Council (LatinNow, grant number 715626), together with *Britannia* 54 (2023), 444, No. 28 and twelve other tablets, which we hope to publish in due course. Nine of them are noticed in E. Birley, R. Birley and A. Birley, *Vindolanda Research Reports II, The Early Wooden Forts* (1993), where this tablet (Inv. 87.722) is pl. XXII. On p. 43 they read it 'in part' as *Cerial[]* and *Romano*, but in *Tab. Vindol.* II, p. 364, it is better read by Bowman and Thomas as *Coris* and *Rumano*.

⁶⁸ Any further text below is now lost, but there might have been a note of Rumanus' military unit at Corbridge, and almost certainly a note of the sender. Notes (i), *Coris*. For this locative place-name, see *Tab. Vindol.* 154.7 (with note). It is found in other Vindolanda ink tablets, including two addresses, 312.back 1 and 670.A.address 1 (with note of the present item). (ii), *Rumano* (which cannot be read as *Romano*, since the second letter is undoubtedly *u*) is a personal name otherwise unattested but, like the rare name *Ruma*, probably comes from the Germanic name-element found in the *matronae Rumanehae*, goddesses well attested in Lower Germany. (iii), *uenā[tor]i*. The third and fourth letters are now incomplete, but their traces accord with *a* and *n* in *Rumano*. In *Tab. Vindol.* 861.27, the soldier Victor is described as *uenator*, and the editors comment that the Digest (50.6, 7) includes *uenatores* in its list of military *immunes*; for examples see *CIL* vi 130 (*uenatores immun(es)* in the Praetorian Guard), iii 7449 (two *im(m)unes uen(atores)* in Legion XI Claudia), and *AE* 1975, 160 (*immu(ni) uenat[or]r(i)* in Legion II Parthica). At Birdoswald are the *uenatores Banniess(es)* (*RIB* 1905), and at Vindolanda the prefect Cerialis refers to 'his' huntsmen (*Tab. Vindol.* 615.A.1, *uenatores mei*).

⁶⁹ Below the lower tips of a few letters from a line now lost is line 1, which includes the sequence *sic*. Line 2 apparently reads: *am accipiendi et se [...]*. Line 3 begins with *esse*. Line 4 ends with *ut remittas [...]* quoted above, and line 5 with the sequence *-sem cum u[...]*. They probably belong to Rumanus' letter, not the previous legal text,

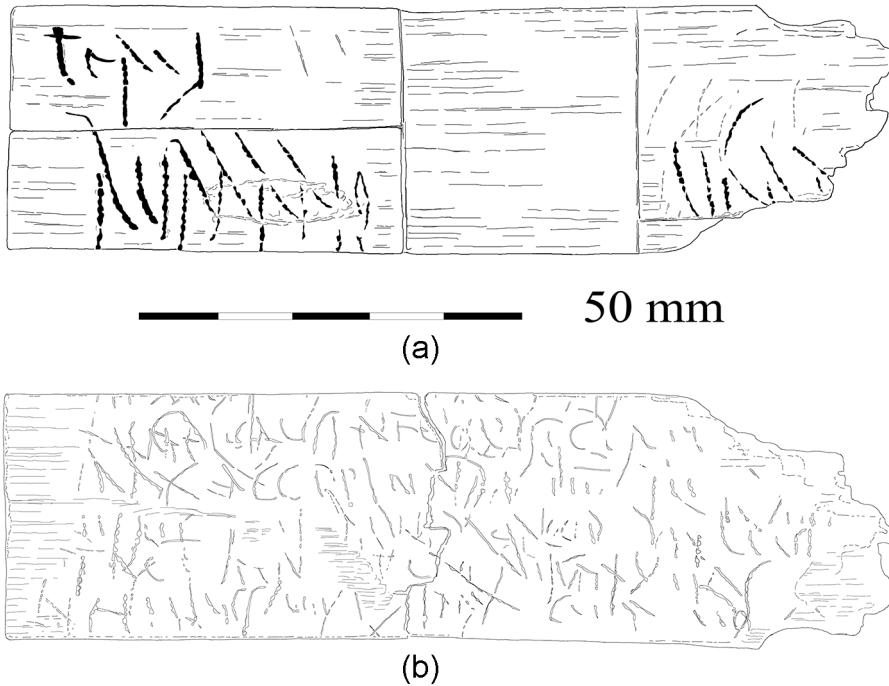


Fig. 27. Vindolanda, three fragments of a stylus tablet (No. 42), (a) outer face, (b) inner face (drawn by R.S.O. Tomlin).

Nottinghamshire

43. **Stokeham** (SK 78 77) (Fig. 28). Copper-alloy finger-ring bezel, 12 mm in diameter, reported⁷⁰ in 2023. Incised retrograde: VIV|ASI, *uiu|as i[...]*. ‘May you live ...’⁷¹

Oxfordshire

44. **Chilson** (SP 32 19) (Fig. 29). Copper-alloy potter’s die, its lettered face 33.5 by 10.3 mm, weight 25.1 g, found⁷² in 2024. Moulded letters in relief, retrograde: MACCIO, *Macci o(fficina)*. ‘Workshop of Maccius.’⁷³

which only contributes confusing traces. It is hoped that the Collaborative Doctoral Partnership (2025–) between the University of Nottingham, the British Museum and the Vindolanda Trust, which will apply generative AI to reading such palimpsests, may help to recover more text.

⁷⁰ PAS ref. NLM-FB96CB.

⁷¹ The letters are cut with exaggerated serifs, top and bottom. The final I (to the left of S) is unexplained. It may have been repeated by mistake or be a blundered *uiu|a<t>is* (plural), but perhaps it introduced a text which continued round the hoop, now lost: *uiuas i[n deo]* (‘May you live in God’). This Christian invocation is found on other British rings: *RIB* II.3, 2422.14, 15, 70; *Britannia* 45 (2014, 446, No. 28; with XP for (in) *Chr(isto)*, on *Britannia* 29 (1998), 436, No. 10; and perhaps blundered, on *Britannia* 46 (2015), 408, No. 48. But *uiuas* occurs by itself on *RIB* II.3, 2422.42; and with only a personal name on *Britannia* 38 (2007), 353, No. 11 and 46 (2015), 408, No. 47. Compare also No. 8 above (Chiseldon).

⁷² By metal-detector, PAS ref. OXON-2C57AA. Details were sent by Edward Caswell, county Finds Liaison Officer, and comments made by Paul Booth and John Pearce. It has been returned to the finder.

⁷³ *Maccius* is a well attested name, whereas **Maccio* is unknown, so the final O must be for *officina* (‘workshop’), although this is usually abbreviated to OF. But for *o(fficina)* compare *RIB* II.1, 2409.24, a clay die with MOGV|NTIO,



Fig. 28. Stokeham, copper-alloy ring bezel (No. 43) (photo: PAS).



Fig. 29. Chilson, copper-alloy potter's die (No. 44) (photo: PAS).

Somerset

45. **Green Ore**, Wells, Rookery Farm (ST 5767 5140). Lead ingot or pig, 0.60 by 0.16 m, 0.12 m deep, found⁷⁴ in 1992. It carries four inscriptions. Moulded on top: IMP VESPASIAN AVG, *imp(eratoris) Vespasian(i) Aug(usti)*. 'Property of the Emperor Vespasian Augustus'. Moulded on front: BRIT EX ARG VEB, *Brit(annicum) ex arg(entariis) Veb(...)*. 'British (lead) from the Veb(...) lead-silver works'. Stamped on back: TI CL [TRIFER], *Ti(berius) Cl(audius) [Trifer(na)]*. Stamped on one end: [L] RAD.⁷⁵

Suffolk

46. **Icklingham** (TL 774 727) (Fig. 30). Pewter bowl, 114 mm in diameter, 25 mm deep, found⁷⁶ in 1853. Two graffiti, both incomplete, have been crudely incised on the wall above the foot-ring by different hands: (a) [...].ALL.S; (b) IXA.INV.[...], *Ixa[r]inu[s]*⁷⁷

Mogunti officina). Pottery stamped OF MACCI or MACCI OF (etc.) has also been found (*CIL* xiii 10010, 1200), and samian stamped MACCI OFF, MACCIVS F (etc.) is well attested (B.R. Hartley and B.M. Dickinson, *Names on Terra Sigillata*, Vol. 5 (2009), s.v. *Maccius*).

⁷⁴ By the farmer when harrowing. It was bought by Taunton Museum, where it now is. Details from Somerset Historic Environment Record <<https://www.somersetheritage.org.uk/record/23209>>

⁷⁵ Compare the almost identical inscriptions on the other four lead pigs found in 1956 in the same field (*RIB* II.1, 2404.7–10). The stamp on one end, which probably reads [L]RAD like 2404.8, is unexplained.

⁷⁶ With the next item, as part of the second (1853) Icklingham hoard of pewter vessels noted in *RIB* II.2, 2417.3, where it is said that eighteen are in the British Museum and four in Ipswich Museum. This bowl and the tazza (Nos. 46 and 47 above) were part of a collection of antiquities owned by 'the late W.H. Fenton, Esq, of Heaton House, Suffolk' from which they were bought at auction by Ipswich Museum in 1936 (acc. nos. 1936.244.16 and 15)

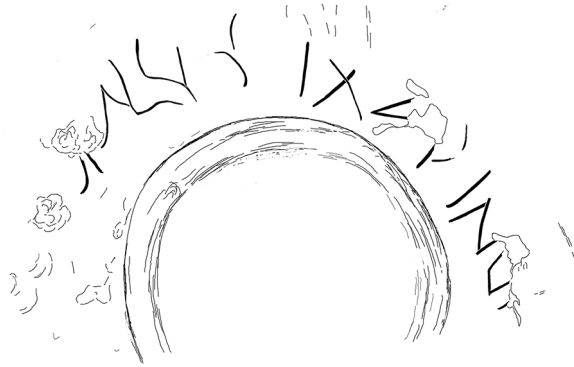


Fig. 30. Icklingham, pewter graffito (No. 46) (drawn by R.S.O. Tomlin from photographs provided by Ipswich Museum).



Fig. 31. Icklingham, pewter graffito (No. 47) (drawn by R.S.O. Tomlin from photographs provided by Ipswich Museum).

47. *Ibid.* (Fig. 31). Pewter tazza, a pedestal vase with angular rim, 168 mm in diameter, 77 mm deep. Crudely incised underneath within the foot-ring: [...]*IXA*[...], probably *Ixa[rinus]*.⁷⁸

together with a third vessel (1936.244.17) from the same hoard, which is not inscribed. Details and photographs were sent by the Museum's Collections Information Officer, Isobel Keith.

⁷⁷ The names of successive owners, the end of one name and the beginning of the next distinguished by the difference in lettering-style. The second owner would have begun his name to the right of the first, to avoid overlapping with it, and he can be identified with the *Isarninus* (etc.) who owned nine other vessels in the 1853 hoard (*RIB* II.2, 2417.12–20). The first name in (a) probably ended in *-allus* rather than *-allis*, since this offers many more possibilities, and there is a space between the vertical stroke which meets the second L, and the final S. But there is no trace here of the second stroke of V. The second name in (b) certainly begins with IX, followed by an incomplete A made with three strokes. It can be read as a variant of the well-attested *Isarninus* just mentioned, reduced to *Ixa[rinus]* as in *RIB* II. II.2, 2417.19 and 20.

⁷⁸ The 1853 hoard included 'six pewter cups with pedestals' inscribed *ISARNINVS* now in the British Museum (*RIB* II.2, 2417.12–17), and this may be another of the same form, but with X for S in the name, which was probably reduced to *Ixa[rinus]* like the previous item. The letter-forms look the same. The surface is quite well preserved without trace of any more letters, but they must have been lost like the third stroke of A.



Fig. 32. Wangford, pewter graffito (No. 48) (drawn by R.S.O. Tomlin from photographs provided by Ipswich Museum).

48. **Wangford** (TM 465 795) (Fig. 32). Pewter bowl, 73 mm in diameter, 23 mm deep, found⁷⁹ before 1936. Incised underneath within the foot-ring: CAR, *Car(...)*.⁸⁰

Surrey

49. **Bagshot** (SU 9115 6345), 42 London Road (Fig. 33). Jet finger-ring, now incomplete, estimated internal diameter 19 mm, found⁸¹ in 1993. The rectangular bezel, 9 by 7 mm, is intact. Incised: Rho-Cross, a reduced form of the Chi-Rho ($\overline{\chi\rho}$) monogram.⁸²

Yorkshire East Riding

50. **Elloughton-cum-Brough** (SE 94 26) (Fig. 34). Complete silver finger-ring reported⁸³ in 2023. The square bezel has a raised central circular panel incised: TOT, *To(u)t(at)is*.⁸⁴

⁷⁹ When it was bought by Ipswich Museum (acc. no. 1936.244.18) from the same collection as the other three vessels (Nos. 46 and 47 with n. 76 above). All four are attributed to the Icklingham 1853 hoard by *RIB* II.2, 2417.3, but 'Wangford' is the provenance recorded by the Museum, suggesting that *RIB* was misled by the vessels being grouped together in the Museum, having all been bought in 1936 from the same collection.

⁸⁰ An abbreviated personal name, probably *Car(us)* or one of its derivatives. C is half the height of the next two letters, as if the writer at first intended to write his name in full, but then abbreviated it.

⁸¹ During the excavations noted in *Britannia* 38 (1997), 447, and fully published by Tamasin Graham, 'A Rho-Cross engraved on a jet finger-ring from Bagshot, Surrey', *Oxford Journal of Archaeology* 21.2 (2002), 211–16.

⁸² The Greek letter Rho with a single, horizontal, cross-stroke. This form occurs on a silver ring from Fifehead Neville, *RIB* II.3, 2422.45, and (as noted there) is later than the usual $\overline{\chi\rho}$ form; it dates from the late-fourth or early-fifth century. It appears on twenty items in the Hoxne Treasure (*Britannia* 25 (1994), 306).

⁸³ PAS ref. YORYM-B6486A.

⁸⁴ T is made with an exaggerated bottom serif as if to balance the cross-stroke. For other TOT rings, see No. 38 above (Scredington) with note.



Fig. 33. Bagshot, jet ring with incised monogram (No. 49) (photo: Surrey Heath Archaeological and Heritage Trust).



Fig. 34. Elloughton-cum-Brough, silver ring bezel (No. 50) (photo: PAS).



Fig. 35. Aldborough lead sealing (No. 51) (photographed and drawn by R.S.O. Tomlin).

North Yorkshire

51. **Aldborough** (*Isurium Brigantum*, SE 4072 6678) (Fig. 35). Lead sealing, 16 by 7 mm, 2 mm thick, found⁸⁵ in 2024 unstratified, c. 70 m outside the North Gate. Within a rectangular panel, D·N, *d(omini) n(ostri)*. ‘(Sealing) of Our Lord (the Emperor).’⁸⁶

52. *Ibid.* (Fig. 36). Wall sherd of a samian bowl (Rheinzabern, Ludowici Sb, c. A.D. 150–250), found⁸⁷ in 2024. Neatly incised after firing: IVC, *Iuc(undus)*. The owner’s name, abbreviated.

⁸⁵ In excavation for the Aldborough Roman Town Project directed by Rose Ferraby and Martin Millett, who made this and the next item available, with details.

⁸⁶ D did not register completely, and is now damaged, but is certainly not P. The sealing may be from the same die as another sealing found at the same location in Aldborough in 1989 (*Britannia* 21 (1990), 376, No. 68), which was little larger and carried the same legend. The present item, with its exaggerated serifs, is very close in style to two of the D N sealings from Binchester, Nos. 23 and 24 above, but its letters are closer together, so the dies are not identical. Other instances of D N are cited there.

⁸⁷ In the same excavation as the previous item, in a deposit dated to the later third century.

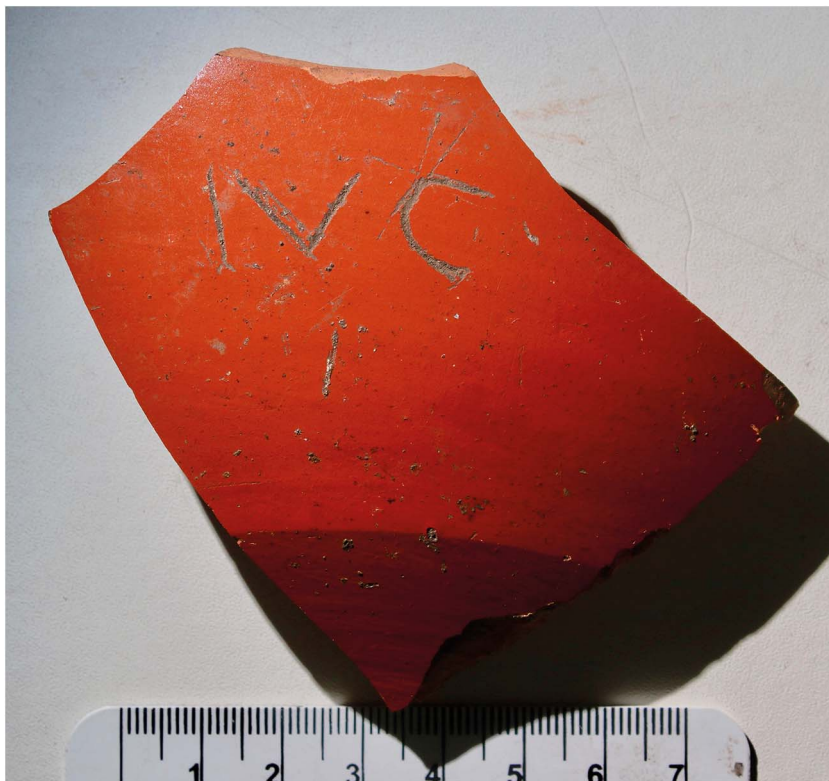


Fig. 36. Aldborough samian graffito (No. 52) (photo: R.S.O. Tomlin).



Fig. 37. Cowesby, gold ring with Chi-Rho (No. 53) (photo: PAS).

53. **Cowesby** (SE 46 89) (Fig. 37). Incomplete gold finger-ring of Brancaster type (c. AD 350–450) found⁸⁸ in 2023. The integral square bezel is incised: $\Lambda \widehat{X} \widehat{P}$ [·], $\alpha \widehat{\chi} \widehat{\rho}$ [ω]. ‘alpha Chi-Rho omega’.⁸⁹

⁸⁸ By metal-detector, PAS ref. SWYOR-9A0B01.

⁸⁹ There is no trace of the expected omega in the space for it, whether it has worn away or was omitted by mistake. Unlike two other gold rings with Chi-Rho (*RIB* II.3, 2422.16 and 17), this inscription is rectrograde, as if to ‘dedicate’ the ring rather than making it a signet.

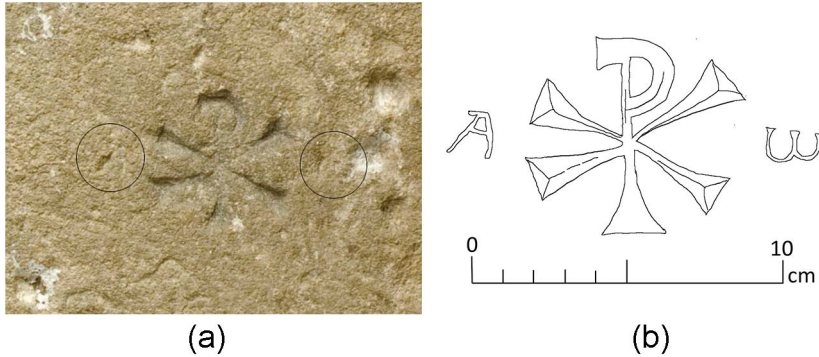


Fig. 38. Chedworth, Chi-Rho between alpha and omega (Add. (a)) (photographed and drawn by Stephen Cosh).



Fig. 39. Hawkedon, helmet stamp (Add. (b)) (photo: British Museum).

C. Addenda et corrigenda

(a) **RIB 128(a)** (Chedworth Roman villa) (Fig. 38). Stone slab, its lower face deeply incised with a Chi-Rho monogram. On either side is shallowly incised a much smaller (5 mm high) Greek letter, alpha to the left and omega to the right: $\alpha \overline{\chi\rho} \omega$ ⁹⁰

(b) **RIB II.3, 2425.9** (Hawkedon) (Fig. 39). Copper-alloy gladiatorial helmet found in Suffolk, stamped on the upper surface of the neck-guard at the back.⁹¹ This ‘much weathered inscription’ was tentatively read as [...] $\overline{\chi\rho}$, but comparison with a gladiatorial helmet

⁹⁰ The two letters are not drawn or mentioned by *RIB*, and were first seen by Stephen Cosh, who sent a photograph and drawing (Fig. 38). The slab has since been re-examined and more photographs taken. The contrast between the deeply incised Chi-Rho and the lightly incised alpha and omega may mean that they were added by another hand. Stephen Cosh also sent a photograph of *RIB* 128(b), which shows that alpha and omega were not added to this Chi-Rho slab. This is probably true of the third slab, *RIB* 128(c), but it has not yet been possible to check.

⁹¹ This addendum was prompted by an inquiry from David Keys, archaeology correspondent of *The Independent*, who obtained information and photographs from the British Museum and Naples Archaeological Museum with the help of Richard Hobbs and Luciana Jacobelli, author of *Gladiators at Pompeii* (2003).



Fig. 40. Pompeii, helmet stamp (photo: Naples Archaeological Museum).

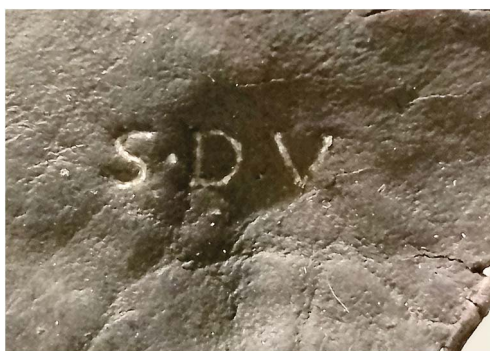


Fig. 41. Newstead, stamped patch of leather (Add. (c)) (photo: Fraser Hunter).

found at Pompeii suggests a better reading. This is stamped in the same place (Fig. 40): P A CAR⁹², which would suggest [P A]CAR for Hawkedon.⁹³

(c) *RIB* II.4, 2445.12 (Newstead) (Fig. 41). The initials S D V stamped on a patch of leather. A recent photograph shows that the letters are less coarse than they were drawn in *RIB*.⁹⁴

(d) *RIB* II.8, 2503.119 (Colchester). The ‘Colchester Vase’ has been re-examined.⁹⁵ The reading is unchanged, but new photographs show the lettering much better than the drawing in *RIB*. They illustrate its calligraphic quality, and confirm that the graffito was made *before* firing, not ‘after firing’ as stated in *RIB*.

⁹² The reading is that of G. Fiorelli, *Catalogo del Museo Nazionale di Napoli. Armi antiche* (1869), p. 16, No. 281, and is supported by the photographs from Naples, given that P is rather worn and might be D; and that R is also worn, but is there in outline. C and A are quite certain, with a triangular medial point between P and C.

⁹³ The Hawkedon impression is too damaged to be certain it was made by the same die, but its central letter is more like C than O, with part of the first diagonal and cross-stroke of A to its right, and then the loop and tail of R which might easily be mis-read as 2 (S reversed). This is the maker’s name abbreviated: P might be the praenomen *P(ublius)*, but is more likely to be a nomen *P(...)* followed by the cognomen *Car(us)* or one of its derivatives. This reading, if accepted, would confirm that the helmet was imported from Campania in the mid-first century A.D., and even that it was worn at gladiatorial games in Colchester; for which compare the ‘Colchester Vase’, Add. (d).

⁹⁴ Increasing the likelihood that they come from the same die as the same initials stamped on a piece of leather from Carlisle (No. 11 above, with note).

⁹⁵ Glynn J.C. Davis and John Pearce, ‘Gladiators at Roman Colchester: Re-Interpreting the Colchester Vase’, *Britannia* 55 (2024), 3–24. For the lettering in particular, see pp. 5–7 with figs. 2–5.

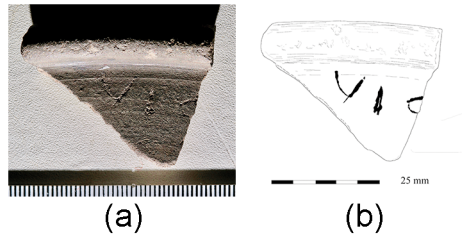


Fig. 42. South Shields, black-burnished ware graffito (Add. (e)) (photographed and drawn by R.S.O. Tomlin).

(e) *Britannia* 27 (1996), 454, No. 42 (South Shields) (Fig. 42). Rim sherd of a black-burnished bowl or dish, found⁹⁶ in 1983. Incised after firing on the outer wall just below the rim: VIC[...], probably Vic[tor].⁹⁷

(f) *Britannia* 28 (1997), 461, No. 20 (Carlisle) (Fig. 43). Samian dish (Drag. 18/31) incised underneath with MARICAI, *Maricae*, the owner's name in the genitive, and the drawing of a bird. With its crest and exaggerated beak, it can be seen as a woodpecker (*picus*), since this bird was sacred to the god Mars.⁹⁸ The poet Ovid calls it 'the bird of Mars'.⁹⁹ Depicted on a dish belonging to Marica, it recalled the 'Mars' element in her name, like the similar bird (Fig. 44) which accompanies the name of the potter Martinus on his stamped mortarium at Colchester.¹⁰⁰

(g) *Britannia* 54 (2023), 435, No. 13 (Stanwix). As noted above, the reverse impression of this lead sealing should be read as [A]NC, [A(ulus)N(...)]C(...).¹⁰¹

D. Alienum

(a) Powell-Cotton Museum, Quex House, Birchington, Kent. Built into a wall are the Roman marble fragments shown in Fig. 45, which include inscribed tombstones. In 1884 they came from the garden of Clarence House, Herne Bay, where they had been owned by William Newton (1786–1861), a civil engineer with antiquarian interests.¹⁰² Like the half-slab in the middle of the top row, they must be 'Grand Tour souvenirs' imported from Rome.¹⁰³

⁹⁶ During the excavations to be published as *Excavations at South Shields Roman Fort*, Vol. II. Alex Croom sent the sherd for re-examination, which enabled it to be drawn.

⁹⁷ The owner's name in the nominative or genitive (*Victoris*), *Victor* or one of its derivatives such as *Victorinus*. This name is very common, but otherwise not attested at South Shields except as a Spanish amphora potter's signature (RIB II.6, 2493.77 with *Britannia* 55 (2024), Add. (b)).

⁹⁸ Plutarch, *Roman Questions*, 21.

⁹⁹ Ovid, *Fasti* iii 37, *Martia picus avis*. Compare Pliny, *Hist. Nat.* x 41, *picus Martius*.

¹⁰⁰ MARTINVS 2, die 6, from the Kay Hartley Mortarium Archive Project (East Anglia).

¹⁰¹ See n. 20 to No. 12 above (Stanwix).

¹⁰² Information from Hazel Basford, the Museum archivist, responding to an inquiry from Ed Griffiths, who could not find them on the RIB website. If known to Collingwood and Wright, they would have been ignored as not being true *aliena*, 'inscriptions ... that have been wrongly ascribed to Roman Britain', but since they may include unpublished items, it is hoped to examine them more closely. The provenance is also worth recording in detail (see next note).

¹⁰³ This half-slab can be identified as the left-hand half of CIL vi 38210 (Rome), dedicated by Clodius Euphemus to his deceased foster-children, which was excavated on the Via Appia in 1793 outside the monastery of San Sebastiano fuori le mura. Carlo Labruzzi made a drawing of the excavation, from which comes the etching in Agostino Rem-Picci, *Monumenti e Ruder Antichi ... della Via Appia* (1844), Tav. 24. In the foreground is a medley of inscriptions found, including the whole of CIL vi 38210, lying in front of two funerary altars now in the Louvre (CIL



Fig. 43. Carlisle, inscribed samian dish (Add. (f)) (photo: Carlisle Archaeological Unit).



Fig. 44. Colchester, mortarium stamp of Martinus (rubbing by Kay Hartley).

E. Falsum

(a) *AE* 1931, 134 (London, ‘hôtel de Buckingham’) (Fig. 46). Marble statue base inscribed: GENIO IOCOSO | HESPERO | SACRVM, *genio iocoso | Hespero | sacrum*. ‘Sacred to the cheerful *genius* Hesperus.’ On it stands the marble figure of a boy with a torch and a basket of fruit, a table-support (*trapezophoros*) 0.80 m high, restored but probably second-century in date. But

vi 10958 and 20413). The slab is shown complete, but when it was published in *CIL*, the entry did not mention that its right-hand half had already been published as *CIL* 17369, ‘a marble fragment in the Vatican Museum’ without further provenance. Evidently the slab suffered a mishap after it was unearthed, and in the antiquities trade its two halves went in different directions.



Fig. 45. Powell-Cotton Museum, inscribed marble fragments (Alienum (a)) (photo: Ed Griffiths).



(a)



(b)

Fig. 46. (a) Marble statue on an inscribed base, seen in London in 1637. (b) Detail of the inscribed base (*falsum*) (photos: National Museum of Antiquities, Leiden).

the inscription below is not original: it was added in the late-sixteenth/early-seventeenth century, probably in Venice, and is thus not Roman but *falsum*.¹⁰⁴

doi:10.1017/S0068113X25100615

¹⁰⁴ *L'Année Épigraphique* locates the inscription from the account by Dubuisson-Aubenay of antiquities in the 'Hôtels de Buckingham et d'Arundel' which he saw during his visit to England in 1637. His account is published by Léon Halkin in *Serta Leodiensia* (1930), 184–6. Dubuisson-Aubenay saw four inscriptions in 'Buckinghamhouse' (*sic*), the others being identifiable as *CIL* vi 10534 (now in Rotterdam, but lost), 10722 (now in Leiden Museum) and 15602 (now in Leiden, but lost). The fourth is *AE* 1931, 134, which (as Halkin and *AE* both note) is not recorded by *CIL* vi (Rome) or vii (Britain). It captioned an Eros-like figure ('un amoureux') holding a torch and cornucopia. From Dubuisson-Aubenay's account it is certain, as Kate Heard has seen, that the location was not 'Buckingham House', but York House in the Strand, which was the city residence of George Villiers, first Duke of Buckingham, until his assassination in 1628. It contained his very large collection of Old Master paintings and Roman sculpture, which was catalogued for the second Duke in 1635. This catalogue (Bodleian MSS Rawlinson, A341, ff. 30–41, transcribed by Simon Jervis in *Furniture History* 33 (1997), 57–74) includes 'A Stone wth: a Descripcon', but this must be one of the other inscriptions. *AE* 1931, 134, is 'A Naked Boy wth. Fruit'.

The second Duke inherited this collection and exported most of it to Holland in 1648, where he sold it in 1650. It included this statue, whose previous history is traced by Abigail Newman of the Rubenshuis, Antwerp, in the exhibition catalogue Thomas Leysen and Ben van Beneden (eds), *Rare and Indispensable Masterpieces from Flemish Collections* (2023). First recorded in a Venetian collection in 1577, when a drawing was made to interest possible buyers, it then passed through various hands including Dudley Carleton, ambassador of England to Venice, who sold it in 1618 to the painter Rubens. In 1626, Rubens sold it to the first Duke of Buckingham, and it came to London.

In view of its association with Rubens, the statue has since been bought by the Rubenshuis, Antwerp, but is currently on display in the National Museum of Antiquities, Leiden, from where Ruurd Albertsma sent photographs and other details. The 1577 drawing (see *The Rubenianum Quarterly* 2021.4, p. 4) shows the statue base as un-inscribed, proving that its inscription was added later. This might be deduced, not only from the un-Roman form of the letter E, but from the content. Although dedications (to) *genio ... sacrum* are quite common, there is none *genio iocoso*, which itself is a phrase unparalleled; and although *Hesperus* is a well-attested personal name, there is no other dedication known to Hesperus the Evening Star.