

1 **Association between rapid and sustained remission and clinician- and**  
2 **patient-reported outcomes in patients with rheumatoid arthritis: post hoc**  
3 **analysis of data from the SELECT-COMPARE study**

4 **Running title:** Value of rapid and sustained remission in rheumatoid arthritis

5 **Authors:** Laure Gossec<sup>1,2</sup>, Jayesh Patel<sup>3</sup>, Aditi Kadakia<sup>3</sup>, Siran Fang<sup>3</sup>, Yi Peng<sup>3</sup>, Sander  
6 Strengholt<sup>3</sup>, Peter C. Taylor<sup>4</sup> and Andrew Östör<sup>5</sup>

7 **Affiliations:** <sup>1</sup>Sorbonne Université, Institut Pierre Louis d'Epidémiologie et de Santé  
8 Publique, Paris, France; <sup>2</sup>AP-HP, Pitié Salpêtrière Hospital, Paris, France; <sup>3</sup>AbbVie Inc,  
9 North Chicago, IL, USA; <sup>4</sup>Botnar Research Centre, University of Oxford, Oxford, UK,  
10 <sup>5</sup>Monash University and Emeritus Research Melbourne & ANU Canberra, Australia.

11 **Corresponding Author:** Aditi Kadakia

12 Dept GMH1, Blg ABV1-4SE-108-01

13 26525 North Riverwoods Blvd.

14 Mettawa, IL 60045

15 Phone: 781-759-3799

16 Email: [aditi.kadakia@abbvie.com](mailto:aditi.kadakia@abbvie.com)

17 **Target Journal:** *Arthritis Research and Therapy*

18 **Figure/Table count:** 2 tables, 3 figures (no limit)

19 **Word Count:** 2545 (no limit)

20

## 21 **Supplementary material**

22 **Supplementary Table 1** MCID and normative values for outcomes assessed<sup>1</sup>

<b>PRO</b>	<b>Range</b>	<b>MCID</b>	<b>Normative value</b>
<b>Pain (VAS)</b>	0–100 mm	≥10 mm reduction	NA
<b>HAQ-DI</b>	0–3	≥0.22-point reduction	≤0.25 points
<b>SF-36 PCS/MCS</b>	0–100	≥2.5-point increase	≥50 points
<b>FACIT-Fatigue</b>	0–52	≥4.0-point increase	≥43.6 points
<b>PGA</b>	0–100%	≥10-point reduction	≤20 points
<b>SJC28/TJC28</b>	0–28	NA	0

23 1. Strand V, Tundia N, Bergman M, et al. Upadacitinib improves patient-reported outcomes

24 vs placebo or adalimumab in patients with rheumatoid arthritis: results from SELECT-

25 COMPARE. *Rheumatology (Oxford)*. 2021. doi:10.1093/rheumatology/keab158.

26 FACIT-Fatigue, Functional Assessment of Chronic Illness Therapy – Fatigue; HAQ-DI,

27 Health Assessment Questionnaire – Disability Index; MCID, minimal clinically importance

28 difference; MCS, Mental Component Summary; NA, not applicable; PCS, Physical

29 Component Summary; PGA, Patient’s Global Assessment; PRO, patient-reported

30 outcome; SF-36, 36-item Short Form survey; SJC28, swollen joint count in 28 joints; TJC28,

31 tender joint count in 28 joints; VAS, visual analog scale.

32 **Supplementary Table 2** Baseline demographic and clinical characteristics

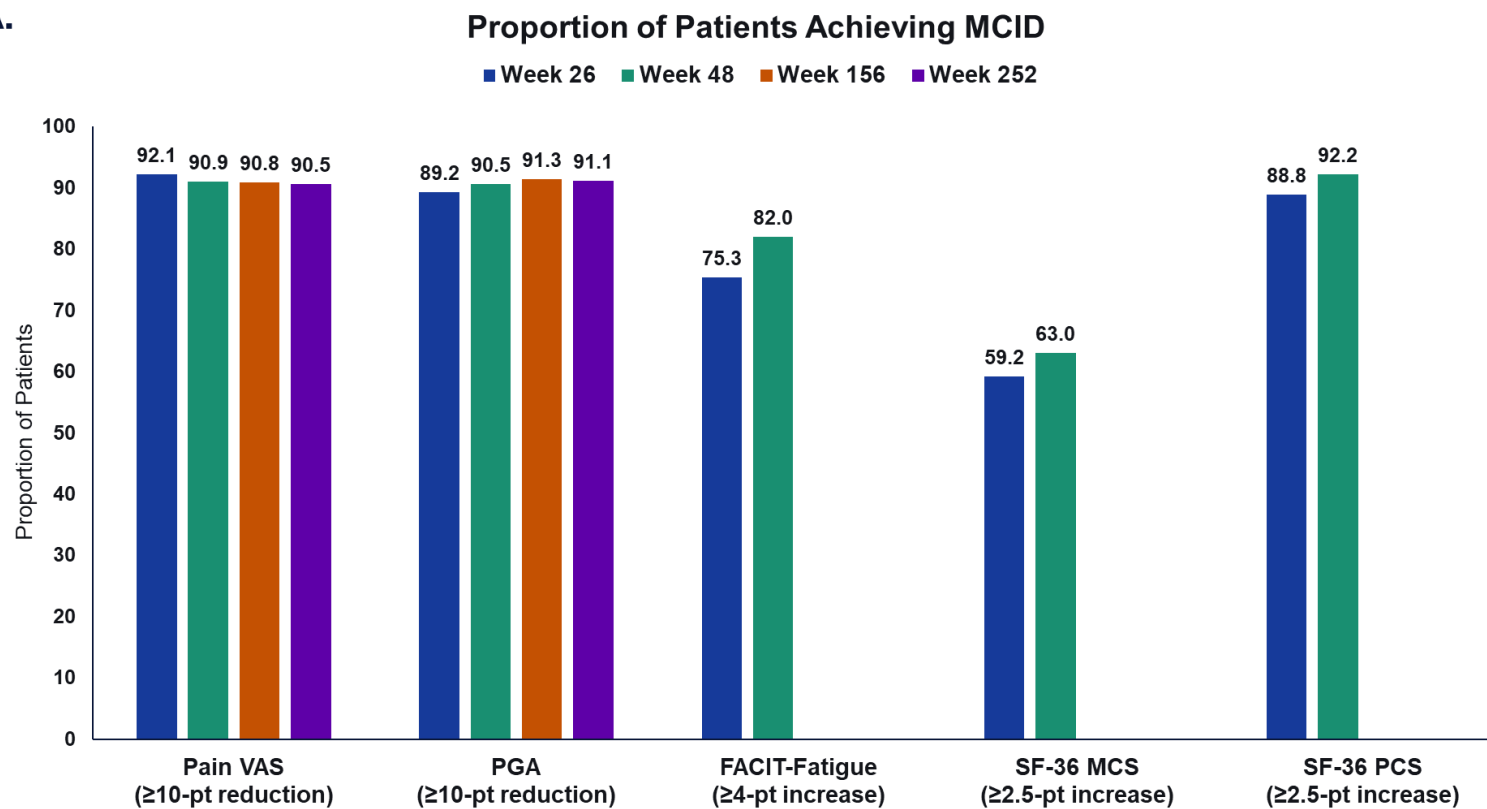
Characteristic	Patients achieving rapid remission N=247	Patients <b>not</b> achieving rapid remission N=638	P-value
<b>Age</b> [years], mean ± SD	53.0 ± 12.4	54.5 ± 11.5	.097
<b>Female sex</b> , n (%)	183 (74.1)	520 (81.5)	.014
<b>Duration of RA diagnosis</b> [years], mean ± SD	8.2 ± 7.8	8.3 ± 8.2	.953
<b>MTX dose</b> [mg], mean ± SD	17.3 ± 4.3	17.0 ± 4.0	.417
<b>Concomitant oral glucocorticoid</b> , <sup>a</sup> n (%) Daily dose [mg], mean ± SD	149 (60.3) 6.0 ± 2.2	407 (63.8) 6.7 ± 2.5	.001
<b>In DAS28-CRP remission</b> , <sup>a</sup> n (%) Yes No	1 (0.4) 245 (99.6)	0 (0) 634 (100)	.108
<b>DAS28-CRP Score</b> , mean ± SD At Baseline	5.4 ± 1.0	6.0 ± 0.9	<.001
<b>TJC28</b> , mean ± SD	12.8 ± 6.5	15.9 ± 6.8	<.001
<b>SJC28</b> , mean ± SD	10.3 ± 4.7	12.0 ± 7.9	<.001

<b>SF-36 PCS</b> , mean ± SD	35.1 ± 7.9	31.3 ± 6.7	<.001
<b>SF-36 MCS</b> , mean ± SD	45.1 ± 10.6	42.0 ± 10.6	<.001
<b>HAQ-DI</b> , mean ± SD	1.4 ± 0.7	1.7 ± 0.6	<.001
<b>Pain [VAS]</b> , mean ± SD	59.1 ± 23.5	68.3 ± 19.3	<.001
<b>FACIT-Fatigue</b> , mean ± SD	30.2 ± 11.3	25.2 ± 10.9	<.001
<b>PGA</b> , mean ± SD	60.5 ± 18.0	67.1 ± 16.8	<.001
<b>PhGA</b> , mean ± SD	57.3 ± 24.3	67.4 ± 19.9	<.001

33 <sup>a</sup>Patients with missing baseline values were excluded from calculations. DAS28-CRP, Disease Activity Score 28 with C-  
34 reactive protein; FACIT-Fatigue, Functional Assessment of Chronic Illnesses Therapy-Fatigue; HAQ-DI, Health Assessment  
35 Questionnaire – Disability Index; MCS, Mental Component Summary; MTX, methotrexate; PCS, Physical Component  
36 Summary; PGA, Patient’s Global Assessment; PhGA, Physician’s Global Assessment; RA, rheumatoid arthritis; SD, standard  
37 deviation; SF-36, 36-item Short Form survey; SJC28, swollen joint count in 28 joints; TJC28, tender joint count in 28 joints;  
38 VAS, visual analog scale.

39 **Supplementary Fig. 1** Proportion of patients achieving MCID or normative values in CRO/PROs over time<sup>a</sup>

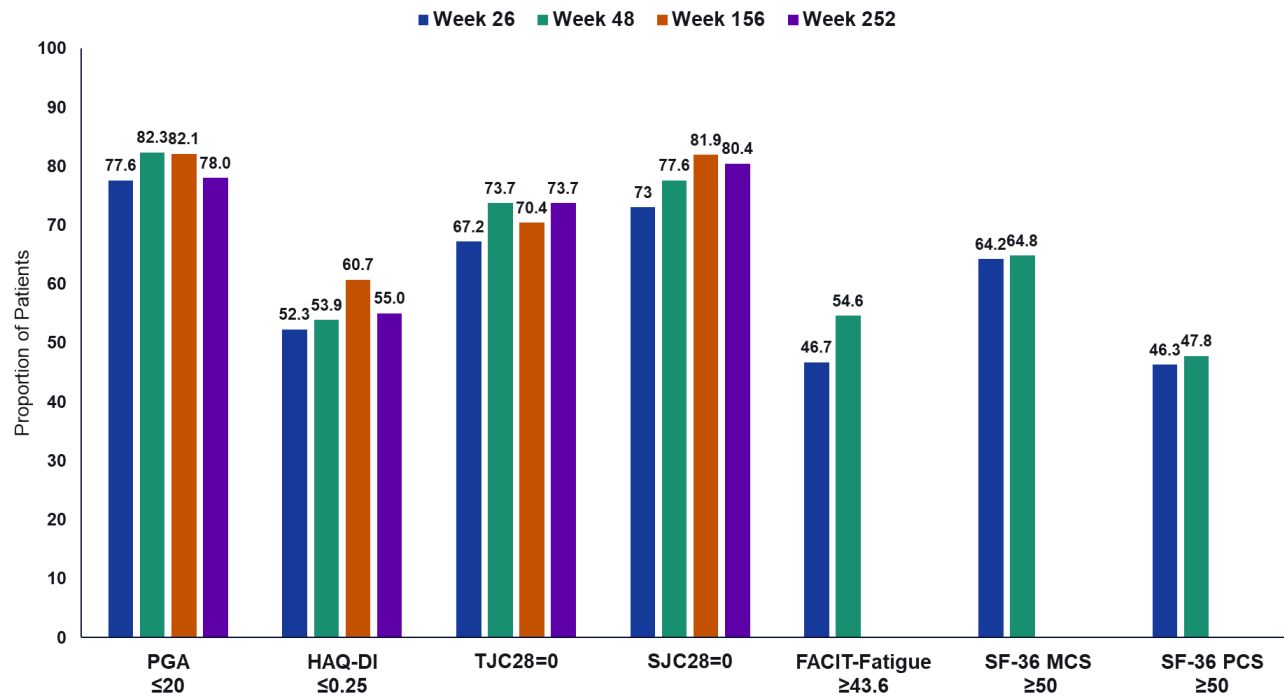
**A.**



40

**B.**

**Proportion of Patients Achieving Normative Values**



41

42 <sup>a</sup>Among patients who achieved rapid remission. CRO, clinician-reported outcome; FACIT-Fatigue, Functional Assessment of  
 43 Chronic Illnesses Therapy-Fatigue; HAQ-DI, Health Assessment Questionnaire – Disability Index; MCID, minimal clinically  
 44 important difference; MCS, Mental Component Summary; PCS, Physical Component Summary; PRO, patient-reported  
 45 outcome; PGA, Patient’s Global Assessment; SF-36, 36-item Short Form survey; SJC28, swollen joint count in 28 joints;  
 46 TJC28, tender joint count in 28 joints; VAS, visual analog scale.

