

Figure S1. Examples of images rejected during initial quality check.

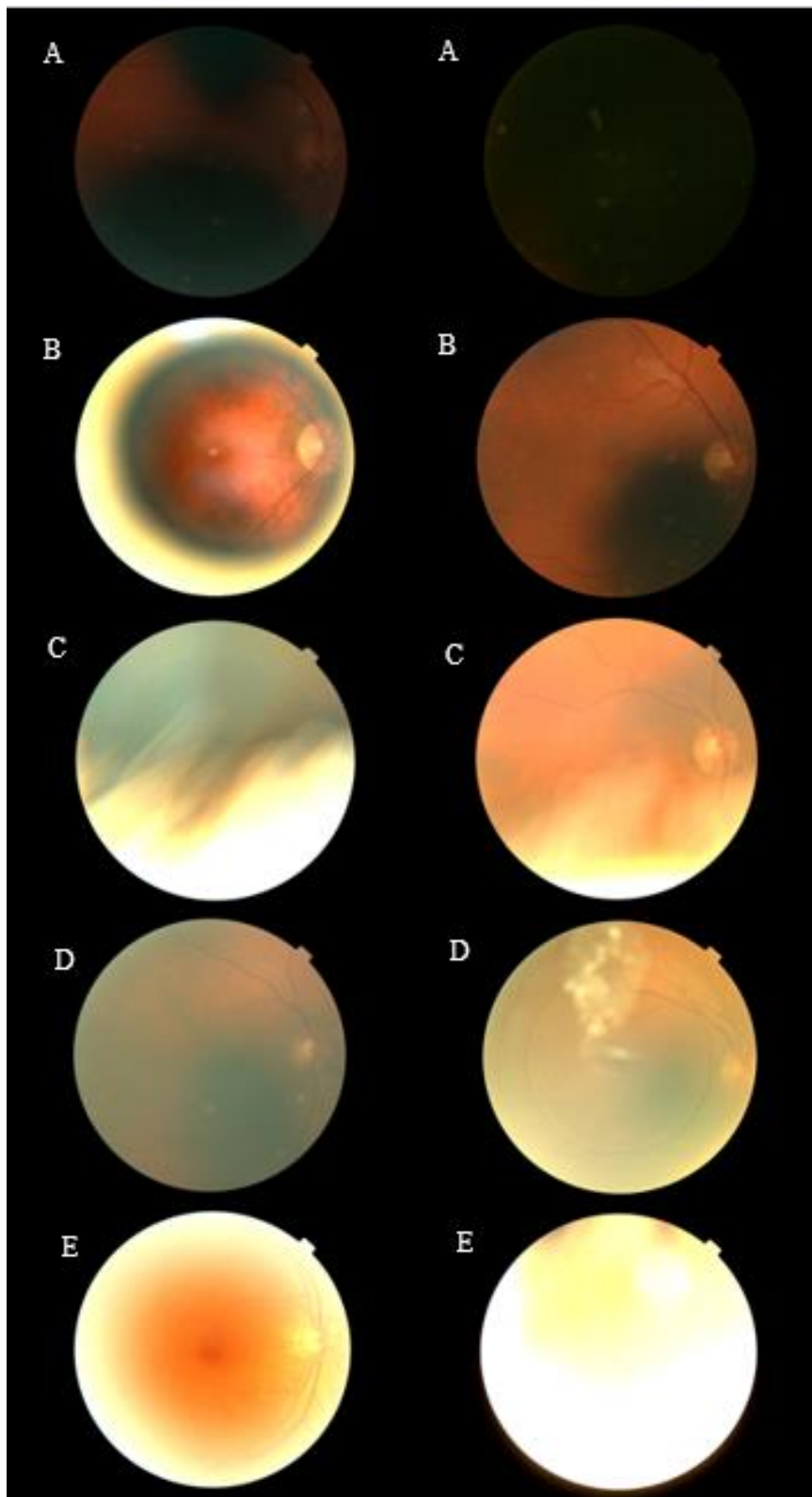


Figure S1. Examples of images rejected during initial quality check. A: dark images; B: images obscured by poor camera and light positioning; C: images obscured by eyelids and lashes; D: clouded images (N.B. contact lens visible in right image); E: images obscured by excessive lighting.

Table S1. Comparison of participant characteristics for those with and without imaging data.

	RMP available	RMP not available	
	Mean (SD)	Mean (SD)	p
Age (years)	58 (8)	59 (8)	<0.001
Waist circumference (cm)	93 (15)	94 (15)	0.10
Systolic blood pressure (mmHg)	146 (22)	147 (22)	0.15
eGFR (ml/min/1.73m ²)	88.8 (16.0)	87.0 (16.4)	<0.001
IOP (mmHg)	16.48 (4.48)	16.2 (4.33)	0.02
LogMAR	0.03 (0.2)	0.06 (0.22)	<0.001
	Number (%)	Number (%)	p
Sex (Female)	1042 (55)	2687 (53)	0.06
Blood pressure-lowering medication usage	347 (18)	1043 (21)	0.049
Diabetes mellitus	209 (11)	627 (12)	0.16
Ever smoked	1104 (59)	3069 (60)	0.20
White ethnicity	1654 (88)	4374 (86)	0.04
Ever consumed alcohol	1764 (93)	4752 (93)	0.72
Ever eye surgery	127 (7)	433 (9)	0.02

Table S1. SD: standard deviation; eGFR: Estimated glomerular filtration rate; IOP: Intraocular pressure; LogMAR: visual acuity assessed using a Logarithm of the Minimum Angle of Resolution chart CRAE: central retina arteriolar equivalent; CRVE: central retinal venular equivalent; px: pixels; AVR: arteriovenous ratio; FDa/v: arteriolar/venular fractal dimension; Torta/v: arteriolar/venular tortuosity.