


IMAGE OPEN

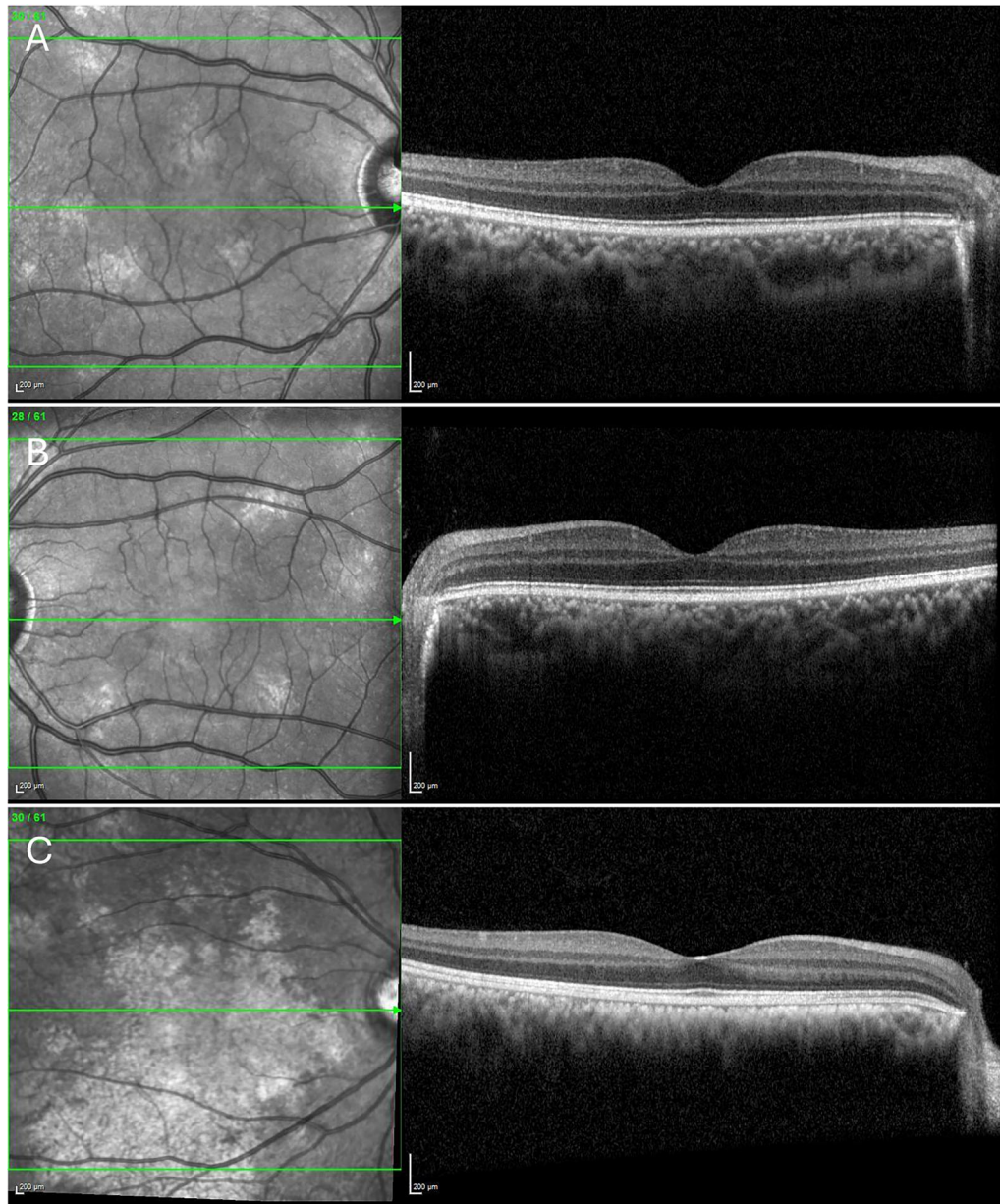



Choroidal abnormalities in neurofibromatosis type 1

Nervine ElMeshad¹, Alice Di Domenico¹ and Samantha R. de Silva^{1,2} 

© The Author(s) 2025

Eye; <https://doi.org/10.1038/s41433-025-04191-5>



¹Oxford Eye Hospital, Oxford University NHS Foundation Trust, Oxford, UK. ²Nuffield Laboratory of Ophthalmology, Nuffield Department of Clinical Neurosciences, University of Oxford, Oxford, UK.  email: samantha.desilva@ndcn.ox.ac.uk

Received: 2 August 2025 Revised: 3 December 2025 Accepted: 12 December 2025

Published online: 07 January 2026

Fig. 1 Retinal imaging illustrating choroidal abnormalities in neurofibromatosis type 1. Fundus imaging of the right (A) and left (B) eye of a 14-year-old male with neurofibromatosis type 1 (NF1) using near infra-red reflectance (NIR, left hand panel) and optical coherence tomography imaging (right hand panel). Best corrected visual acuity (BCVA) was 6/5 OU, anterior segments showed iris Lisch nodules, OCT was largely normal whereas NIR imaging showed well-defined hyperreflective nodules or plaques consistent with choroidal abnormalities (CA). These are melanocytic hamartomas [1] best visualised on NIR imaging [2] and are diagnostic for NF1, being included in the National Institutes of Health diagnostic criteria [3]. CAs may also be poorly defined or placoid, as illustrated by large hyperreflective areas on NIR imaging of the right eye (C) of a 13-year-old male with suspected NF1, whose BCVA was 6/6 OU. Neuroimaging revealed a right optic nerve glioma. We highlight that awareness of CAs is essential to aid diagnosis of NF1 and subsequent management.

REFERENCES

1. Kurosawa A, Kurosawa H. Ovoid bodies in choroidal neurofibromatosis. *Arch Ophthalmol.* 1982;100:1939–41.
2. Abdolrahimzadeh S, Felli L, Plateroti R, Plateroti AM, Giustini S, Calvieri S, et al. Morphologic and vasculature features of the choroid and associated choroid-retinal thickness alterations in neurofibromatosis type 1. *Br J Ophthalmol.* 2015;99:789–93.
3. Legius E, Messiaen L, Wolkenstein P, Pancza P, Avery RA, Berman Y, et al. Revised diagnostic criteria for neurofibromatosis type 1 and Legius syndrome: an international consensus recommendation. *Genet Med.* 2021;23:1506–13. <https://doi.org/10.1038/s41436-021-01170-5>.

AUTHOR CONTRIBUTIONS

Conceptualization, NE, SDS; case review, manuscript preparation and editing, NE, AD, SDS. All authors have read and agreed to the submitted version of the manuscript.

COMPETING INTERESTS

The authors declare no competing interests.

ADDITIONAL INFORMATION

Correspondence and requests for materials should be addressed to Samantha R. de Silva.

Reprints and permission information is available at <http://www.nature.com/reprints>

Publisher's note Springer Nature remains neutral with regard to jurisdictional claims in published maps and institutional affiliations.



Open Access This article is licensed under a Creative Commons Attribution 4.0 International License, which permits use, sharing, adaptation, distribution and reproduction in any medium or format, as long as you give appropriate credit to the original author(s) and the source, provide a link to the Creative Commons licence, and indicate if changes were made. The images or other third party material in this article are included in the article's Creative Commons licence, unless indicated otherwise in a credit line to the material. If material is not included in the article's Creative Commons licence and your intended use is not permitted by statutory regulation or exceeds the permitted use, you will need to obtain permission directly from the copyright holder. To view a copy of this licence, visit <http://creativecommons.org/licenses/by/4.0/>.

© The Author(s) 2025