

Research



Cite this article: Neil S, Evans J, Montgomery J, Schulting R, Scarre C. 2023 Provenancing antiquarian museum collections using multi-isotope analysis. *R. Soc. Open Sci.* **10**: 220798. <https://doi.org/10.1098/rsos.220798>

Received: 8 July 2022

Accepted: 5 December 2022

Subject Category:

Chemistry

Subject Areas:

biogeochemistry/environmental science

Keywords:

isotopes, biogeochemistry, neolithic

Author for correspondence:

Samantha Neil

e-mail: samantha.neil@arch.ox.ac.uk

This article has been edited by the Royal Society of Chemistry, including the commissioning, peer review process and editorial aspects up to the point of acceptance.



Provenancing antiquarian museum collections using multi-isotope analysis

Samantha Neil¹, Jane Evans², Janet Montgomery³,
Rick Schulting¹ and Chris Scarre⁴

¹School of Archaeology, University of Oxford, Oxford OX1 2TG, UK

²National Environmental Isotope Facility, British Geological Survey, Keyworth, Nottinghamshire, UK

³Department of Archaeology, Durham University, Durham, UK

⁴Durham University, Durham, UK

SN, 0000-0002-8850-8719

Many of the most significant archaeological sites in Europe were excavated by antiquarians over one hundred years ago. Modern museum collections therefore frequently contain human remains that were recovered during the nineteenth and early twentieth centuries. Here we apply multi-isotope analysis ($^{87}\text{Sr}/^{86}\text{Sr}$, $\delta^{18}\text{O}$, $\delta^{13}\text{C}$, $\delta^{15}\text{N}$) and ^{14}C dating to evaluate the provenance of human remains within a collection that is thought to have been recovered from one of the most important archaeological sites in Britain. Excavated in 1910, the site of Coldrum in Kent is a megalithic burial monument that may be one of the earliest sites associated with the transition to farming in Britain. The interpretation of this site is therefore key to understanding how agriculture began. Using isotope analysis we show that although the human skeletal collections attributed to Coldrum do contain some of the earliest dated Neolithic human remains in Britain, they also contain the remains of individuals of fifth to seventh centuries AD date. We evaluate subsistence and mobility patterns of early Neolithic populations and provide new information about the origins of those individuals in the collection that date to the fifth to seventh centuries AD. We demonstrate the utility of employing isotope analysis to provide direct and independent information about the provenance of human remains in museum collections.

1. Introduction

Some of the most important archaeological sites were excavated more than a century ago. Remains recovered during antiquarian investigations, therefore, form a significant component of museum collections and provide the basis for study and understanding of

the past today. An example of this is the site of Coldrum, Kent. It is a megalithic burial monument, with a substantial stone chamber that was found to contain human remains. The practice of building monuments of this type was introduced to Britain from the European mainland during the transition to farming, the development of the Neolithic, in the early fourth millennium BC. As well as being associated with the introduction of new traditions of burial and monument construction, this period also saw a radical change in subsistence patterns. New technology, such as pottery production and new species of non-native plants and animals, such as domesticated cereals, cattle and sheep, were also introduced from the European mainland at this time [1,2]. Many authors suggest that Coldrum long barrow could be one of the earliest monuments to have been constructed during the start of the Neolithic, and the Coldrum collection has therefore become central to the debate over how farming began in Britain [3–7].

Excavations began at the monument in 1910, following reports of the discovery of pottery and skeletal remains at the site [8–10]. The human remains that were found during this excavation were given to the Royal College of Surgeons (RCS) in London [11]. Established in the eighteenth century, the RCS housed one of the largest and most geographically diverse antiquarian collections in Europe [12].

Investigations at Coldrum resumed in the 1920s and further human remains were recovered: these are also recorded as having been given to the RCS [13]. After the war, the cranial remains, fragments of cranial vault and mandibles in the collection were moved from the RCS to the University of Cambridge, where accession records document their arrival in 1950–51. All the post-cranial remains attributed to the site were transferred to the Natural History Museum in London. In addition to the collections that are currently held by these two institutions, a small number of human remains, also attributed to Coldrum, are curated by Maidstone Museum.

The Coldrum collection, therefore, has a complex history: the human remains are fragmentary and disarticulated and they have been moved between and curated by multiple institutions. All the remains in these collections are attributed to the Coldrum excavations by the institutions that curate them. However, only a few specimens were directly labelled at the time of the excavations: only four fragments of cranial vault have original labelling that means they can be securely associated with their context of excavation at the site. F.J. Bennett's account of the excavations describes how human remains were recovered from two different levels or 'platforms' inside the megalithic burial chamber: from an upper level (platform 1) and lower level (platform 2) [10]. The four cranial vault fragments with original labelling can be attributed to two individuals from the upper level and two individuals from the lower level of Bennett's excavations. The two cranial fragments found on the lower level have produced some of the earliest dates yet obtained on human remains associated with a Neolithic monument in Britain, dating to the first two centuries of the fourth millennium BC [14]. The two fragments found on the upper level have dates that fall later in the fourth millennium BC. It is therefore hypothesized that there were at least two different phases of burial activity at the site: Bayesian modelling suggests that the first phase of activity began in 3980–3800 *cal BC* (95% probable) or 3960–3880 *cal BC* (68% probable) and ended in 3930–3750 *cal BC* (95% probable) or 3910–3770 *cal BC* (68% probable). The subsequent phase of activity is postulated to have begun in 3730–3540 *cal BC* (95% probable) or 3660–3570 *cal BC* (68% probable) and ended in 3320–3010 *cal BC* (95% probable) or 3330–3170 *cal BC* (68% probable; Model 2 by Wysocki *et al.*, re-calibrated using IntCal20 and OxCal 4.4) [14–16].

As the Coldrum collection has been shown to contain some of the earliest human remains attributable to a Neolithic monument in Britain [6,7,14], it is critical to interpretation of the transition to farming which occurred at the start of the fourth millennium BC [3–7]. Here we conduct ^{14}C dating of human remains in the collection that have not previously been radiocarbon dated in conjunction with $^{87}\text{Sr}/^{86}\text{Sr}$, $\delta^{18}\text{O}$, $\delta^{13}\text{C}$ analysis of tooth enamel to provide direct information about where individuals obtained their childhood diet. We combine this with $\delta^{15}\text{N}$ and $\delta^{13}\text{C}$ analysis of dental collagen to provide direct information about childhood dietary composition.

2. Methods

2.1. $^{87}\text{Sr}/^{86}\text{Sr}$ analysis

Application of strontium isotope analysis for geographical provenancing is based on the principle that $^{87}\text{Sr}/^{86}\text{Sr}$ varies according to the age, initial Sr/Rb ratio and geological history of bedrock [17,18]. Strontium weathers out from rocks, into soils and ground waters where it becomes bioavailable, being incorporated into plants and, in turn, into animals [19]. Conventionally measured $^{87}\text{Sr}/^{86}\text{Sr}$ values do not vary significantly between trophic levels and because enamel does not remodel once formed and is

highly resistant to diagenesis, $^{87}\text{Sr}/^{86}\text{Sr}$ values directly reflect the sources of dietary strontium to which individuals were exposed during tooth formation [20–22]. Comparison of the isotope ratios preserved in tooth enamel to mapped bioavailable ranges in plants and water can therefore be used to evaluate where an individual obtained their diet [23–25]. Here, we analyse $^{87}\text{Sr}/^{86}\text{Sr}$ values in adjacent consecutively mineralizing molar teeth (first, second and third permanent molars), where present, to compare isotope ratios in teeth that form at different stages of early life. Formation of the first permanent adult molar crown commences *in utero*, just prior to birth [26], and completes by approximately 4.5 ± 0.5 years of age; formation of the second molar crown occurs between approximately 2.5 ± 0.5 years and 8.5 ± 0.5 years of age; the timing of third molar formation is most variable with initial cusp formation from approximately 8.5 ± 0.5 years of age and crown completion by approximately 14.5 ± 0.5 years [27,28].

2.2. $\delta^{18}\text{O}_{\text{carbonate}}$ and $\delta^{13}\text{C}_{\text{carbonate}}$ analysis

There are two ionic forms of oxygen in tooth enamel that are suitable for oxygen isotope analysis, structural carbonate (CO_3^{2-} , $\delta^{18}\text{O}_{\text{carbonate}}$) and phosphate (PO_4^{3-} , $\delta^{18}\text{O}_{\text{phosphate}}$) [29,30]. Here we use oxygen and carbon isotope analysis of the CO_3^{2-} fraction of enamel. $^{18}\text{O}/^{16}\text{O}$ varies geographically with climate, according to factors such as temperature, continentality, latitude and altitude [31,32].

Use of oxygen isotope analysis for geographical provenancing is based on the principle that $\delta^{18}\text{O}$ values in tooth enamel of mammals who are obligate drinkers reflect the oxygen isotope composition of drinking water [33–36]. However, in human populations, the oxygen isotope composition of ingested fluids can also be influenced by culturally mediated behaviour, for example, consumption of fluids that have undergone fractionation through biological processes, such as cow's milk [37–40] or breast milk [41]. Enamel that forms while an infant is being breastfed (e.g. deciduous molars or first molars) may therefore record higher $\delta^{18}\text{O}$ values than that which forms later in childhood [42,43]. Culinary practice, such as boiling water, brewing or stewing food, has also been shown to influence the oxygen isotope composition of ingested fluids [44]. In addition to the variation in $\delta^{18}\text{O}$ composition of ingested fluids that may be generated by culinary practices, recent study of enamel from modern human populations suggests that $\delta^{18}\text{O}$ values can also vary by up to approximately 2‰ between samples taken at the same location in antimeres of teeth from the same individual [45]. Such variability in $\delta^{18}\text{O}$ values contrasts with that of $^{87}\text{Sr}/^{86}\text{Sr}$ values, which have been shown to vary only in the fourth decimal place between samples taken from the same location from antimeres of teeth, by up to 0.000192 [45]. It has also been shown that human populations buried in adjacent regions of temperate Europe can have similar $\delta^{18}\text{O}$ values, as values in local precipitation overlap [46]. As a consequence of the above factors, oxygen isotope analysis of enamel from human populations is useful for making broader scale distinctions, for differentiating individuals who originate from regions of much colder climate and have very low $\delta^{18}\text{O}_{\text{carbonate}}$ values, (<24.5‰, or $\delta^{18}\text{O}_{\text{phosphate}}$ VSMOW values < 15.5‰) from those who sourced their childhood dietary resources from temperate locations e.g. [47–53].

2.3. Laboratory procedures: strontium and oxygen isotope analysis

This study sampled previously undated dentition in mandibular remains from a total of ten individuals. The skeletal remains in the collections that are attributed to Coldrum are disarticulated and fragmentary. To avoid sampling fragments of dentition that could belong to the same individual, samples were only taken from right-sided mandibular dentition. Teeth were only sampled from the left side when the mandible was complete. Loose teeth and maxillary dentition were not sampled.

In addition to sampling mandibles attributed to Coldrum in the University of Cambridge Duckworth Laboratory collection that have been allocated accession numbers (EU.1.5.127 and EU.1.5.129 to EU.1.5.133), three further unlabelled specimens in the Duckworth collection that are attributed to Coldrum but have not been allocated accession codes were also sampled and given codes for the purpose of this study: COL/UN8, COL/UN and COL/UNBOYD, where UN stands for 'unidentified'. Specimen COL/UNBOYD has the letters 'Boyd' handwritten directly on the side of the mandible. The number '8' is handwritten on specimen COL/UN8. In addition to analysis of teeth from these mandibular remains held at the University of Cambridge, dentition from one mandible fragment curated by Maidstone Museum (accessioned as specimen 6) was also sampled.

An enamel sample of approximately 10 mg in weight was taken from the crown of each tooth for oxygen isotope analysis and another of 20–30 mg in weight was taken for strontium isotope analysis. As analysis was conducted on bulk enamel, isotope ratios represent the weighted average of all sources of dietary strontium to which the individual was exposed at the time of tooth formation [21].

It has been shown that once enamel is fully mineralized it is highly resistant to diagenesis and retains *in vivo* $^{87}\text{Sr}/^{86}\text{Sr}$ values e.g. [54–56]. However, caries may alter the *in vivo* isotope ratios: [45] none of the teeth sampled in this study exhibited any evidence of caries and all were completely mineralized.

Following procedures described in Montgomery 2002 [54], surface enamel was thoroughly abraded using a tungsten carbide dental burr. Enamel chips were cut using a flexible diamond-edged rotary saw and were then again mechanically cleaned using a tungsten carbide dental burr to remove any adhering dentine. Dental saws and burrs were cleaned ultrasonically for 5 min and rinsed three times in high purity de-ionized water between preparation of samples. Enamel samples were taken in clean sealed containers to the Class 100, HEPA-filtered laboratory facilities at the National Environmental Isotope Facility (NEIF, Keyworth, Nottingham, England). Here, they were cleaned ultrasonically and rinsed in high purity water (Millipore Alpha Q). They were then dried and weighed into pre-cleaned Teflon beakers. To obtain strontium concentrations they were spiked with a known amount of ^{84}Sr tracer solution. Each sample was dissolved in Teflon distilled 8 M HNO_3 . Samples were converted to chloride using 6 M HCl, taken up in titrated 2.5 M HCl and pipetted onto ion-exchange chromatography columns. Strontium was separated with Eichrom AG50-X8 resin (200–400 mesh). Procedural blanks were below 80 pg.

Samples were then loaded on to Re filaments using a method adapted from Birck 1986 [57]. Strontium isotope composition and concentrations were determined by Thermal Ionization Mass Spectrometry using a ThermoTriton automated multi-collector mass spectrometer. To correct for fractionation during the process of mass spectrometry, $^{87}\text{Sr}/^{86}\text{Sr}$ values were normalized to the accepted value for $^{88}\text{Sr}/^{86}\text{Sr} = 0.1194$. During the period of this study, the machine gave a value for the international standard for $^{87}\text{Sr}/^{86}\text{Sr}$ (NBS 987) of 0.710253 ± 0.000012 (2σ , $n = 350$). An estimate of the reproducibility of strontium concentration (Sr ppm) was provided by replicate analysis of an aliquot of bone standard solution (NIST1486), which gave 7.22 ± 0.27 ppm ($\pm 3.75\%$, 1σ , $n = 16$).

Initial preparation of enamel samples for $\delta^{18}\text{O}$ and $\delta^{13}\text{C}$ analysis was conducted using the same methods used above for strontium isotope analysis. Cleaned enamel chips were powdered using a pestle and mortar at the National Environmental Isotope Facility. Oxygen ($\delta^{18}\text{O}_{\text{carbonate}}$) and carbon ($\delta^{13}\text{C}_{\text{carbonate}}$) isotope ratios in the carbonate fraction of enamel were then determined with a GV IsoPrime dual inlet mass spectrometer, using approximately 3 mg of the clean powdered enamel, following the method described in Chenery *et al.* 2012 [29]. Isotope ratios are reported as delta (δ) values in per mil (‰) relative to the $\delta^{18}\text{O}_{\text{VPDB}}$ scale calculated using an in-house carbonate reference material, Keyworth Carrera Marble (KCM), that has known $\delta^{13}\text{C}_{\text{VPDB}}$ (2.00‰) and $\delta^{18}\text{O}_{\text{VPDB}}$ (−1.73‰) having been measured against IAEA-603 ($\delta^{18}\text{O}_{\text{VPDB}} = -2.37\%$) and NBS 19 ($\delta^{18}\text{O}_{\text{VPDB}} = -2.20\%$). Calibration of the dual inlet isotope ratio mass spectrometer using NBS19 and NBS18 ($\delta^{18}\text{O}_{\text{VPDB}} = -23.01\%$) shows a consistent but small scaling factor for $\delta^{18}\text{O}$ equivalent to approximately 0.2‰ over the approximately 20‰ range between NBS19 and NBS18, which is negligible given the proximity of enamel $\delta^{18}\text{O}_{\text{carbonate}}$ data to NBS19, external precision on sample data, uncertainty associated with the assigned value of NBS18, and overall sample reproducibility.

Analytical reproducibility during measurement of this run of samples was $\pm 0.4\%$ (1σ , $n = 15$) for $\delta^{13}\text{C}$ and $\pm 0.11\%$ for $\delta^{18}\text{O}$ (1σ , $n = 15$). Enamel samples were also run in duplicate to assess the replicability of $\delta^{18}\text{O}_{\text{carbonate}}$, $\delta^{13}\text{C}_{\text{carbonate}}$ values: $\delta^{18}\text{O}$ values varied by a mean of $0.2 \pm 0.3\%$ (1σ , $n = 6$) and $0.2 \pm 0.2\%$ (1σ , $n = 6$) for $\delta^{13}\text{C}_{\text{carbonate}}$ between duplicates. $\delta^{18}\text{O}_{\text{carbonate}}$ values have been normalized to the VSMOW scale using the equation of Kim *et al.* [58] ($\delta^{18}\text{O}_{\text{VSMOW-SLAP}} = 1.03092 \times \delta^{18}\text{O}_{\text{VPDB}} + 30.92\%$).

To enable comparison of these results to data from studies that have sampled the phosphate (PO_4^{3-}) fraction e.g. [59,60], conversion from $\delta^{18}\text{O}_{\text{carbonate}}$ to $\delta^{18}\text{O}_{\text{phosphate}}$ is undertaken using the regression equation of Chenery *et al.* [29] ($\delta^{18}\text{O}_{\text{phosphate}} = 1.0322 \times \delta^{18}\text{O}_{\text{carbonate}} - 9.6849$). $\delta^{18}\text{O}$ values of the $\delta^{18}\text{O}_{\text{phosphate}}$ and $\delta^{18}\text{O}_{\text{carbonate}}$ fractions are well correlated and the error involved in calculating $\delta^{18}\text{O}_{\text{phosphate}}$ using this equation is low (0.28‰, 1σ) [29].

2.4. ^{14}C dating and $\delta^{15}\text{N}$ and $\delta^{13}\text{C}_{\text{collagen}}$ analysis

With the exception of specimen 6 from the Maidstone Museum collection (see below) all radiocarbon dates and $\delta^{15}\text{N}$ and $\delta^{13}\text{C}_{\text{collagen}}$ results were obtained from collagen extracted from the roots of the same permanent first molar teeth as those that were sampled for $^{87}\text{Sr}/^{86}\text{Sr}$, $\delta^{18}\text{O}$, $\delta^{13}\text{C}_{\text{carbonate}}$ analysis. $\delta^{15}\text{N}$ and $\delta^{13}\text{C}_{\text{collagen}}$ values were measured in samples of bulk collagen taken from the roots of first permanent molars. The roots of first permanent molar teeth begin to form at approximately 3.5 ± 0.5 years; their formation is complete by approximately 7.5 ± 0.5 years of age [27].

Radiocarbon dating was conducted at the Oxford Radiocarbon Accelerator Unit (ORAU). Collagen was extracted using gelatinization and ultrafiltration techniques as described in Bronk Ramsey *et al.* [61] and Brock *et al.* [62,63]. Once samples were graphitized, isotope ratios were measured by accelerator mass spectrometry (AMS) using methods described in Dee and Bronk Ramsey [64] and Bronk Ramsey *et al.* [61]. Radiocarbon dates are calibrated using IntCal2020 and OxCal4.4 [15,16].

Use of $\delta^{15}\text{N}$ and $\delta^{13}\text{C}$ analysis to study dietary composition exploits the large natural variation in $\delta^{13}\text{C}$ values of plants that use different (C_3 or C_4) photosynthetic pathways and the contrast in $\delta^{13}\text{C}$ values between terrestrial C_3 and marine ecosystems [65,66]. $\delta^{13}\text{C}$ and $\delta^{15}\text{N}$ values also vary geographically with environment and climate, according to temperature and water availability e.g. [67,68], with terrestrial species in northern Europe having lower $\delta^{13}\text{C}$ and higher $\delta^{15}\text{N}$ values than those in southern Europe, e.g. [69,70]. When dietary protein intake is sufficient, $\delta^{13}\text{C}_{\text{collagen}}$ values predominately reflect the protein component of the diet, whereas $\delta^{13}\text{C}_{\text{carbonate}}$ values in bioapatite reflect the isotope composition of the diet as a whole, including carbohydrates and lipids [71,72]. Carbon isotope analysis of bioapatite can therefore be particularly useful for elucidating the contribution of C_4 plants to the diet, which may be under-represented when analysing $\delta^{13}\text{C}_{\text{collagen}}$ e.g. [73,74]. This would not, however, be relevant for individuals dated to the fourth millennium BC in Europe, as the consumption of C_4 plants such as millet is not known to have occurred here until the sixteenth century BC [75].

$\delta^{15}\text{N}$ and $\delta^{13}\text{C}_{\text{collagen}}$ analysis was conducted specifically for the purpose of dietary isotope analysis at the University of Bradford. Isotope measurements were made using a Thermo Flash EA 1112, with separated N_2 and CO_2 being introduced to a Delta plus XL via a Conflo III interface. Results are reported as delta (δ) values, per mil (‰), expressed relative to the international standard used for carbon isotope analysis Vienna Pee Dee Belemnite (VPDB) and for nitrogen, Ambient Inhalable Reservoir (AIR) [76]. International laboratory standards IAEA-600, IAEA-CH3, IAEA-CH6, IAEA-CH7, IAEA-N1 and IAEA-N2 were interspersed with samples in the analytical run. Internal standards were also used in the run: fish gelatine with a $\delta^{15}\text{N}$ value of 14.4‰ and a $\delta^{13}\text{C}$ value of -15.5‰ and bovine liver standard with a $\delta^{15}\text{N}$ value of $7.6 \pm 0.25\text{‰}$ and a $\delta^{13}\text{C}$ value of $-21.6 \pm 0.25\text{‰}$. Analytical error as determined from repeated measurement of both international and internal standards during these runs of samples was 0.2‰ at one standard deviation for both $\delta^{15}\text{N}$ and $\delta^{13}\text{C}_{\text{collagen}}$. Every collagen sample in this study was also measured in duplicate (table 1), with the exception of sample COL/UN8, where analysis of the duplicated sample failed during the run. $\delta^{15}\text{N}$ values varied between duplicated samples by a mean of $0.1 \pm 0.1\text{‰}$ (1σ , $n = 9$) and by a mean of $0.1 \pm 0.1\text{‰}$ (1σ , $n = 9$) between duplicates for $\delta^{13}\text{C}_{\text{collagen}}$ (table 1). Where duplicates of samples were measured for $\delta^{15}\text{N}$, $\delta^{13}\text{C}_{\text{collagen}}$, $\delta^{18}\text{O}_{\text{carbonate}}$ and $\delta^{13}\text{C}_{\text{carbonate}}$, the values cited in the results and discussion below are the mean of the two measurements. C:N ratios are also provided in table 1 and these are within the accepted ranges for collagen [77].

The mandible from Maidstone Museum (specimen 6) is from a child, aged approximately 18 months at death. A sample of mandibular bone was taken for radiocarbon dating and $\delta^{15}\text{N}$ and $\delta^{13}\text{C}_{\text{collagen}}$ values were also obtained from this. $^{87}\text{Sr}/^{86}\text{Sr}$, $\delta^{18}\text{O}_{\text{carbonate}}$ and $\delta^{13}\text{C}_{\text{carbonate}}$ values were obtained by sampling enamel from the left deciduous second molar tooth of this individual.

3. Results

Of the 10 sampled specimens, four in the collection attributed to Coldrum date to the fifth to seventh centuries AD (EU.1.5.130, EU.1.5.131, EU.1.5.132 and EU.1.5.133; figure 1). $^{87}\text{Sr}/^{86}\text{Sr}$ values of enamel from these individuals range between 0.7090 and 0.7098 (mean 0.7093 ± 0.0003 , 1σ , $n = 8$); Sr concentrations range between 36 and 113 ppm (mean 75 ± 25 ppm, 1σ , $n = 8$; figure 2). $\delta^{18}\text{O}_{\text{carbonate}}$ values of samples of first permanent molar enamel from these individuals range between 26.7 and 28.1‰ (mean $27.5 \pm 0.7\text{‰}$, 1σ , $n = 4$). The mean enamel $\delta^{18}\text{O}_{\text{carbonate}}$ value of enamel from first permanent molar teeth is 0.2‰ higher than that of enamel from second and third permanent molar teeth, where values range between 27.0 and 27.6‰ (mean of $27.3 \pm 0.25\text{‰}$, 1σ , $n = 4$). Enamel $\delta^{13}\text{C}_{\text{carbonate}}$ values of all teeth sampled in the group range that date to the fifth to seventh centuries AD range between -16.1 and -13.7‰ (mean $-14.6 \pm 0.9\text{‰}$, 1σ , $n = 8$). $\delta^{15}\text{N}$ values of first molar root dentine samples range between 9.8 and 10.9‰ (mean $10.6 \pm 0.5\text{‰}$, 1σ , $n = 4$) and $\delta^{13}\text{C}_{\text{collagen}}$ values of these samples range between -20.8 and -19.8‰ (mean $-20.2 \pm 0.5\text{‰}$, 1σ , $n = 4$).

Five individuals in the sampled collections date to the forty-first to thirty-eighth centuries BC (EU.1.5.127, EU.1.5.129, COL/UN8, COL/UN and COL/UNBOYD; figure 3). $^{87}\text{Sr}/^{86}\text{Sr}$ values of enamel

Table 1. Results of $^{87}\text{Sr}/^{86}\text{Sr}$, $\delta^{18}\text{O}$, $\delta^{13}\text{C}$ analysis of tooth enamel, radiocarbon dating and $\delta^{15}\text{N}$ and $\delta^{13}\text{C}$ analysis of collagen from specimens in the Coldrum collection. Age at death estimated based on stage of tooth development, following AlQahtani *et al.* [27]. Individuals with fully developed third molar tooth roots at the time of death classified as 'adult'.

| museum accession number | tooth | radiocarbon laboratory code | radiocarbon age (BP) | calibrated date (95% confidence) | | $\delta^{13}\text{C}_{\text{collagen}}$ | $\delta^{15}\text{N}$ | C:N ratio | $\delta^{13}\text{C}_{\text{collagen}}$ | $\delta^{15}\text{N}$ | C:N ratio | Average $\delta^{13}\text{C}_{\text{collagen}}$ | Average $\delta^{15}\text{N}$ | $^{87}\text{Sr}/^{86}\text{Sr}$ | Sr (mg kg ⁻¹) | $\delta^{13}\text{C}$ enamel | | $\delta^{18}\text{O}$ enamel | | $\delta^{13}\text{C}$ enamel | | $\delta^{18}\text{O}$ enamel | | average $\delta^{13}\text{C}$ | | average $\delta^{18}\text{O}$ | | | |
|-------------------------|------------------------------|-----------------------------|----------------------|----------------------------------|--------------------|---|-----------------------|-----------|---|-----------------------|-----------|---|-------------------------------|---------------------------------|---------------------------|------------------------------|-----------|------------------------------|-----------|------------------------------|-----------|------------------------------|-----------|-------------------------------|-----------|-------------------------------|-----------|-----------|-----------|
| | | | | IntCal20, OxCal4.4 | IntCal20, OxCal4.4 | | | | | | | | | | | Duplicate | Duplicate | Duplicate | Duplicate | Duplicate | Duplicate | Duplicate | Duplicate | Duplicate | Duplicate | Duplicate | Duplicate | Duplicate | Duplicate |
| EU15.130 | adult | LMI | 0va-28201 | 1529 ± 23 | 464-603 AD | -19.8 | 10.96 | 3.19 | -19.81 | 10.7 | 3.19 | -19.81 | 10.83 | 0.70924 | 72.9 | -14.41 | 28.14 | -14.41 | 28.14 | -14.41 | 28.14 | -14.41 | 28.14 | -14.41 | 28.14 | -14.41 | 28.14 | -14.41 | 28.14 |
| | | LM2 | | | | | | | | | | | | 0.70912 | 55.6 | -14.33 | 27.52 | -14.33 | 27.52 | -14.25 | 27.77 | -14.25 | 27.77 | -14.29 | 27.64 | -14.29 | 27.64 | | |
| | | LM3 | | | | | | | | | | | | 0.70901 | 88.4 | -13.93 | 27.03 | -13.93 | 27.03 | -13.93 | 27.03 | -13.93 | 27.03 | -13.93 | 27.03 | -13.93 | 27.03 | | |
| EU15.131 | adult | LMI | 0va-28202 | 1601 ± 23 | 406-539 AD | -20.28 | 10.93 | 3.33 | -20.27 | 10.69 | 3.3 | -20.28 | 10.81 | 0.70929 | 107.9 | -16.09 | 28.15 | -16.02 | 28.09 | -16.05 | 28.12 | -16.05 | 28.12 | -16.05 | 28.12 | -16.05 | 28.12 | -16.05 | 28.12 |
| | | RA2 | | | | | | | | | | | | 0.70914 | 112.5 | -14.45 | 27.31 | -14.45 | 27.31 | -14.45 | 27.31 | -14.45 | 27.31 | -14.45 | 27.31 | -14.45 | 27.31 | | |
| EU15.132 | adult | RMI | 0va-28273 | 1480 ± 22 | 560-641 AD | -20.84 | 10.84 | 3.2 | -20.73 | 10.87 | 3.18 | -20.78 | 10.85 | 0.70907 | 57.0 | -14.54 | 26.78 | -14.54 | 26.78 | -13.93 | 27.53 | -13.93 | 27.53 | -14.24 | 27.16 | -14.24 | 27.16 | | |
| | adult | RMI | 0va-28272 | 1568 ± 23 | 636-561 AD | -19.93 | 9.94 | 3.31 | -19.75 | 9.75 | 3.27 | -19.84 | 9.84 | 0.70966 | 66.0 | -15.92 | 26.69 | -15.92 | 26.69 | -15.92 | 26.69 | -15.92 | 26.69 | -15.92 | 26.69 | -15.92 | 26.69 | -15.92 | 26.69 |
| EU15.127 | adult | LMI | 0va-28203 | 5048 ± 28 | 3959-3773 BC | -21.35 | 8.52 | 3.21 | -21.38 | 8.56 | 3.2 | -21.37 | 8.54 | 0.70973 | 72.0 | -15.24 | 27.33 | -15.24 | 27.33 | -15.24 | 27.33 | -15.24 | 27.33 | -15.24 | 27.33 | -15.24 | 27.33 | -15.24 | 27.33 |
| | | LM2 | | | | | | | | | | | | 0.70981 | 72.1 | -14.71 | 27.00 | -14.71 | 27.00 | -13.90 | 27.00 | -13.90 | 27.00 | -14.71 | 27.00 | -13.90 | 27.00 | | |
| COLJ08 | sub-adult > 12.5 years | LMI | 0va-28204 | 5119 ± 30 | 3984-3801 BC | -21.18 | 8.99 | 3.22 | None | None | None | -21.18 | 8.99 | 0.70831 | 54.2 | -15.70 | 27.10 | -15.70 | 27.10 | -15.70 | 27.10 | -15.70 | 27.10 | -15.70 | 27.10 | -15.70 | 27.10 | -15.70 | 27.10 |
| | | LM2 | | | | | | | | | | | | 0.70949 | 51.1 | -15.16 | 27.13 | -15.16 | 27.13 | -15.11 | 27.14 | -15.11 | 27.14 | -15.13 | 27.13 | -15.13 | 27.13 | | |
| | adult | RMI | 0va-28205 | 5093 ± 28 | 3966-3798 BC | -20.38 | 9.02 | 3.21 | -20.46 | 9.13 | 3.21 | -20.42 | 9.08 | 0.70997 | 51.2 | -14.72 | 26.79 | -14.72 | 26.79 | -14.72 | 26.79 | -14.72 | 26.79 | -14.72 | 26.79 | -14.72 | 26.79 | | |
| COLJ09 | adult | RA2 | | | | | | | | | | | | 0.71029 | 33.9 | -14.99 | 26.89 | -14.99 | 26.89 | -14.99 | 26.89 | -14.99 | 26.89 | -14.99 | 26.89 | -14.99 | 26.89 | -14.99 | 26.89 |
| | adult | RMI | 0va-28206 | 5136 ± 29 | 4040-3804 BC | -21.35 | 8.52 | 3.21 | -21.38 | 8.56 | 3.21 | -21.37 | 8.54 | 0.70889 | 53.0 | -15.95 | 27.11 | -15.95 | 27.11 | -15.95 | 27.11 | -15.95 | 27.11 | -15.95 | 27.11 | -15.95 | 27.11 | -15.95 | 27.11 |
| | | RA2 | | | | | | | | | | | | 0.70995 | 36.0 | -15.45 | 26.85 | -15.45 | 26.85 | -15.45 | 26.85 | -15.45 | 26.85 | -15.45 | 26.85 | -15.45 | 26.85 | -15.45 | 26.85 |
| COLJ0870 | adult | RMI | 0va-28207 | 5048 ± 29 | 3954-3770 BC | -21.73 | 8.28 | 3.24 | -21.79 | 8.43 | 3.26 | -21.76 | 8.36 | 0.70930 | 59.0 | -16.65 | 27.10 | -16.65 | 27.10 | -16.65 | 27.10 | -16.65 | 27.10 | -16.65 | 27.10 | -16.65 | 27.10 | -16.65 | 27.10 |
| | child, c. 18 months at death | DP2 | 0va-28200 | 4550 ± 27 | 3371-3103 BC | -21.23 | 12.38 | 3.2 | -21.09 | 12.28 | 3.22 | -21.16 | 12.33 | 0.70956 | 108.0 | -16.99 | 27.87 | -16.99 | 27.87 | -16.99 | 27.87 | -16.99 | 27.87 | -16.99 | 27.87 | -16.99 | 27.87 | -16.99 | 27.87 |



Figure 1. Photograph of individual EU.1.5.130 from the Coldrum collection. The individual is dated to 464–603 AD (OxA-28201; 95% confidence, IntCal20, OxCal4.4).

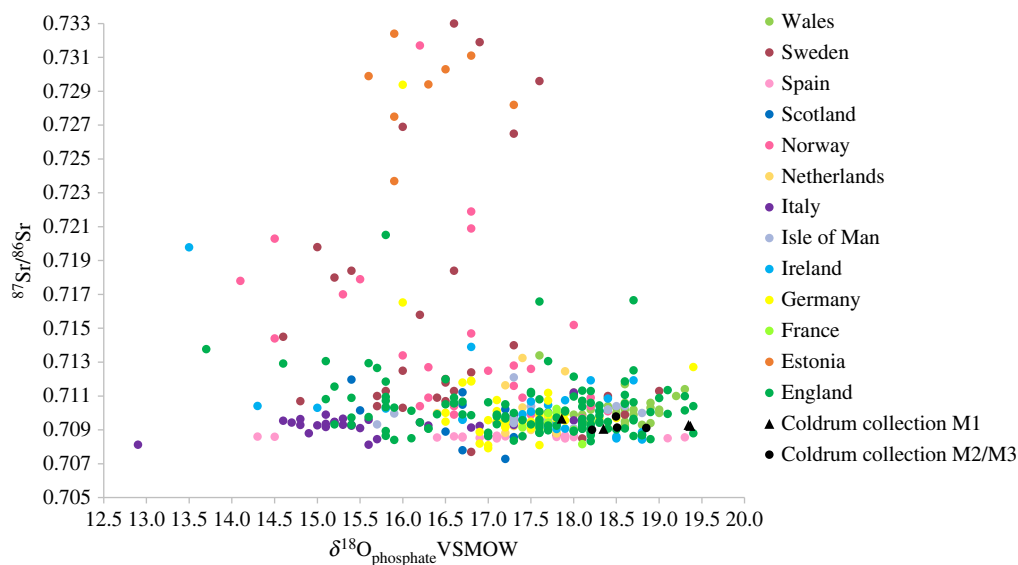


Figure 2. $\delta^{18}\text{O}_{\text{carbonate}}$ (VSMOW) versus $^{87}\text{Sr}/^{86}\text{Sr}$ of enamel from individuals of fifth to seventh centuries date in the Coldrum collection in comparison to post-infant dentition of Early Medieval populations buried in Europe (fifth to tenth centuries AD) [78]. Triangles = permanent first molar teeth. Circles = post-infant dentition: permanent second molar, third molar and premolar tooth crowns that form later in childhood; $\delta^{18}\text{O}$ values are therefore unlikely to be influenced by breastfeeding.

from these individuals range between 0.7079–0.7103 (mean 0.7093 ± 0.0007 , 1σ , $n = 11$). Sr concentrations in enamel from this group range between 34 and 72 ppm (mean 53 ± 12 ppm, 1σ , $n = 11$). $\delta^{18}\text{O}_{\text{carbonate}}$ values of enamel samples from the first permanent molar teeth of these individuals range between 26.8 and 27.3‰ (mean $27.1 \pm 0.2\text{‰}$, 1σ , $n = 5$). The mean $\delta^{18}\text{O}_{\text{carbonate}}$ value of enamel from first permanent molars is again 0.2‰ higher than values in enamel from second and third permanent molar teeth, where values range between 26.5 and 27.1‰ (mean $26.9 \pm 0.2\text{‰}$, 1σ , $n = 6$). Individuals in the group that date to the forty-first to thirty-eighth centuries BC have enamel $\delta^{13}\text{C}_{\text{carbonate}}$ values that range between -16.7 and -13.9‰ (mean $-15.3 \pm 0.7\text{‰}$, 1σ , $n = 11$). $\delta^{15}\text{N}$ values of first molar root dentine samples from these individuals

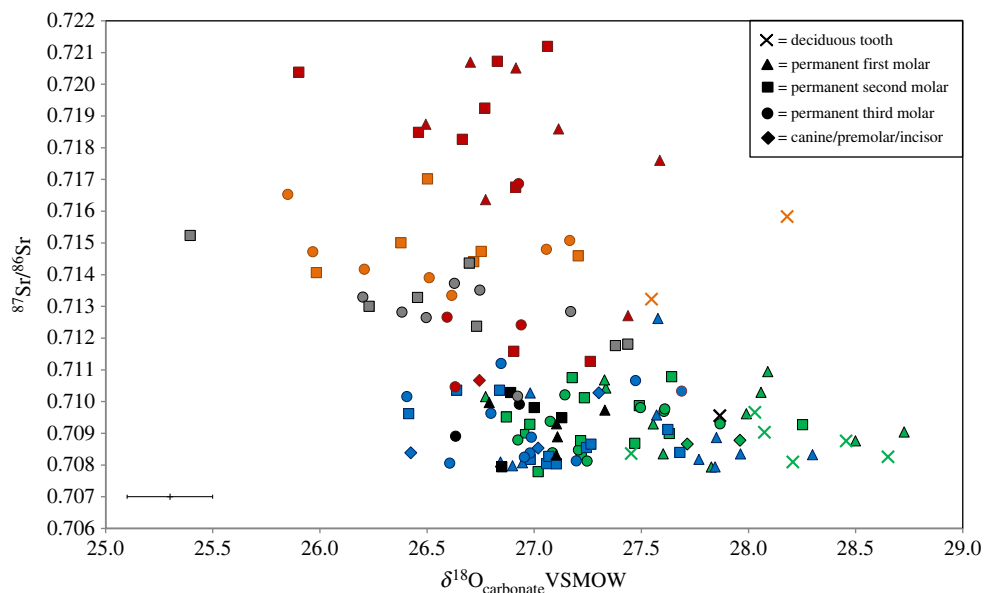


Figure 3. $^{87}\text{Sr}/^{86}\text{Sr}$ versus $\delta^{18}\text{O}_{\text{carbonate}}$ (VSMOW) values of enamel from dentition of Neolithic date attributed to Coldrum, in comparison to individuals excavated from other sites of earlier Neolithic date in Britain [79–82]. Tooth types illustrated within the diagram. Coldrum collection = Black symbols; Whitwell cairn = Red symbols; Penywyrlod long cairn = Orange symbols; Ty Isaf long cairn = Grey symbols; Hazleton North long cairn = Blue symbols; Hambledon Hill long barrow and causewayed enclosures = Green symbols. Analytical error for $\delta^{18}\text{O}_{\text{carbonate}}$ is shown as $\pm 0.2\text{‰}$ (2σ). Error for $^{87}\text{Sr}/^{86}\text{Sr}$ is within the symbol.

range between 8.4 and 9.1‰ (mean $8.7 \pm 0.3\text{‰}$, 1σ , $n = 5$) and $\delta^{13}\text{C}_{\text{collagen}}$ values of these samples range between -21.8 and -20.4‰ (mean $-21.2 \pm 0.5\text{‰}$, 1σ , $n = 5$).

The specimen (number 6) from Maidstone Museum dates to the thirty-fourth to thirty-second centuries BC, with a calibrated radiocarbon date of 3369–3106 BC (OxA-28200; table 1; figure 3). Enamel from the second deciduous molar tooth of this individual, a child aged approximately 18 months at death, gave an $^{87}\text{Sr}/^{86}\text{Sr}$ value of 0.7096, with a strontium concentration of 108 ppm. Enamel from the same tooth gave an $\delta^{18}\text{O}_{\text{carbonate}}$ value of 27.9‰ and an $\delta^{13}\text{C}_{\text{carbonate}}$ value of -16.9‰ . Collagen sampled from the mandible of this individual gave an $\delta^{15}\text{N}$ value of 12.3‰ and a $\delta^{13}\text{C}_{\text{collagen}}$ value of -21.2‰ .

4. Discussion

Although the Coldrum collection contains human remains dated to the fourth millennium BC, it also contains individuals of fifth to seventh century AD date. Accessions documents at the University of Cambridge state that all these remains are attributed to excavations at the site of Coldrum and that they were moved to the Duckworth Laboratory from the Royal College of Surgeons (RCS) in 1950–51.

The Coldrum burial monument with its stone chamber and long mound is of a style of construction that is associated with the earlier fourth millennium BC and no Anglo-Saxon material culture is known from the site. The possibility that Coldrum was reused for burial in the Early Medieval period might perhaps be considered. Some 27 other Neolithic long barrows and chambered tombs are documented as having been reused for burial during the early Anglo-Saxon period in Britain, with examples including Lyneham long barrow, Oxfordshire [83–85]. Alternatively, the possibility that the individuals of fifth to seventh centuries AD date do not derive from Coldrum should be considered. The Coldrum collection has a complex curatorial history, having been transferred between and curated by several different institutions in the century following its excavation. During the nineteenth and early twentieth centuries the Royal College of Surgeons housed one of the largest and most diverse antiquarian collections in Europe [12]. However, both the RCS collections and the buildings in which they were held were extensively damaged during the Second World War and the collections were subsequently dispersed to other institutions following the war, including the Natural History Museum and the University of Cambridge (*ibid.*) The possibility that human remains from Coldrum were mixed with those from other sites before being transferred to the University of Cambridge following the war cannot be excluded.

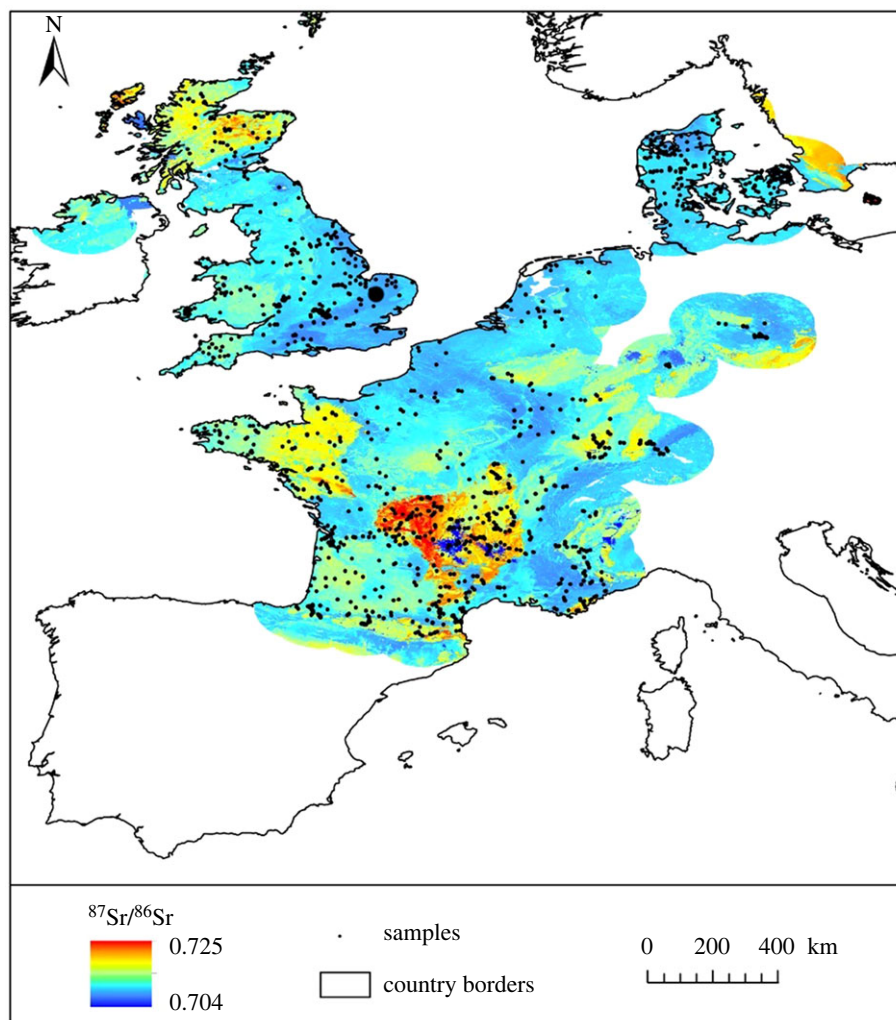


Figure 4. Bioavailable strontium isoscape for Western Europe, after Bataille *et al.* [23]; reproduced with permission. The site of Coldrum is illustrated as a large black circle; small black circles mark the location of biosphere $^{87}\text{Sr}/^{86}\text{Sr}$ samples.

The isotope results assist in constraining the origin of the individuals in this collection, by providing direct information about both where they obtained their childhood diet and their dietary composition. $^{87}\text{Sr}/^{86}\text{Sr}$ values of enamel from both the individuals dated to the fifth to seventh centuries AD and those that date to the fourth millennium BC exclude them having obtained their childhood diet from areas where bioavailable values exceed 0.711. Examples of areas that record bioavailable values higher than 0.711 in Europe include the south-western peninsula of England; Wales; Scotland; the Armorican Massif and Massif Central in France; Norway and Sweden (figure 4) e.g. [23,24,86–88]. Enamel $^{87}\text{Sr}/^{86}\text{Sr}$ values of the individuals in the Coldrum collection dated to the fourth millennium BC contrast with the strontium isotope ratios exhibited by other Neolithic populations that have been excavated in Wales (figure 3), at Ty Isaf and Penywyrlod [70]. They also contrast with values found in an Early Neolithic burial population excavated at Whitwell, Derbyshire. Individuals from the latter site have highly radiogenic values > 0.720 , that are not consistent with the bioavailable $^{87}\text{Sr}/^{86}\text{Sr}$ range for Britain, indicating they were migrants from outside the area in which they were buried [87].

The Coldrum burial monument is located on Cretaceous West Melbury Marly Chalk and Zig Zag Chalk Formation, near to local superficial deposits of Quaternary clay, silt, sand and gravel [89]. The Gault Formation is situated approximately 0.5 km to the south; Cretaceous sandstones of the Lower Greensand (Folkestone Formation) are also located to the south, within 2 km of the site. Current biosphere mapping suggests that all the individuals sampled by this study, both those dated to the fifth to seventh century AD and those dated to the fourth millennium BC, have strontium isotope ratios that could be consistent with the locally bioavailable $^{87}\text{Sr}/^{86}\text{Sr}$ range of 0.7079–0.7103, within 2 km around the site of Coldrum [20]. Individuals in both groups could have obtained their resources

locally, on lithology of the type that surrounds this site. However, $^{87}\text{Sr}/^{86}\text{Sr}$ values within this range are also bioavailable in other areas, such as south-central and eastern England and the immediately adjacent European mainland to the east, in northeastern France, Belgium and the Netherlands. e.g. [23,81,90]

The human remains in the Coldrum collection that date to the forty-first to thirty-eighth centuries BC are among the earliest to be associated with a Neolithic monument in Britain [6,7,14] and the site has therefore played a critical role in debates about how farming began in Britain e.g. [3–7]. Agriculture was already well established on the adjacent European mainland at this time and the inception of farming in Britain involved the introduction of domestic animals and plants from Europe, as well as the importation of new technologies, such as pottery manufacturing and the practice of burial monument construction [1,2]. Recent DNA evidence indicates that farming techniques and Neolithic practices were introduced by migration of populations from the immediately adjacent European mainland [91]. There are parallels between the Neolithic material culture of eastern Britain and that of northeastern France and Belgium during this period [92]. However, it is not possible to test the hypothesis of movement from such areas to southeastern England using $^{87}\text{Sr}/^{86}\text{Sr}$ or $\delta^{18}\text{O}$ analysis (see below), as the biosphere strontium isotope values present in southeastern England are similar to those recorded in these areas of the immediately adjacent European mainland e.g. [81,93].

While some of the individuals in the current study have dates that fall within the early Neolithic, within the first two centuries of the fourth millennium BC, the mandible of one individual sampled by this study is dated to the late fourth millennium BC (3369–3106 cal BC: Maidstone Museum Specimen 6). Enamel from the second deciduous molar tooth of this individual, a child aged approximately 18 months at death, gave an $^{87}\text{Sr}/^{86}\text{Sr}$ value of 0.7096. Enamel from this individual was taken from the second deciduous molar tooth. Like the cusps of permanent first molar teeth, the crown of the deciduous second molar tooth begins to form *in utero* [26,27]. Hence it is possible the $^{87}\text{Sr}/^{86}\text{Sr}$ value of enamel reflects a contribution of dietary strontium prior to birth from resources that were exploited by the mother of the individual [54]. As with values exhibited by the other individuals sampled during this study, the strontium isotope ratio of enamel from this individual also falls within the locally bioavailable $^{87}\text{Sr}/^{86}\text{Sr}$ range around the site of Coldrum, although as noted above such a value is also bioavailable in other regions of Britain and mainland Europe.

Variation in $^{87}\text{Sr}/^{86}\text{Sr}$ values between adjacent permanent molar teeth of those individuals dated to the forty-first to thirty-eighth centuries is low, with values varying by a mean of 0.00060 ± 0.00002 (1σ , $n = 6$) between adjacent teeth. Variation in $^{87}\text{Sr}/^{86}\text{Sr}$ between permanent molar teeth within the group of individuals dated to the fifth to seventh century AD is also low, with values varying by a mean of 0.00013 ± 0.00049 (1σ , $n = 4$) between teeth. The presence of similar values in enamel from teeth that mineralize at different times during childhood could suggest that individuals obtained all their dietary resources locally throughout early life. Alternatively, individuals could have obtained their resources from different regions that have a similar bioavailable $^{87}\text{Sr}/^{86}\text{Sr}$ range, examples of which have been mentioned above.

Among the collections dated by this study to the forty-first to thirty-eighth centuries BC are several specimens attributed to Coldrum that do not have any labelling or accession numbers (e.g. COL/UN, COL/UN8): their provenance and attribution to this particular site could therefore be questioned. However, the age of these remains is consistent with those remains of known stratigraphic context from Coldrum. As identified by Wysocki *et al.* [14], two skull fragments are securely documented as originating from the lower level of the Coldrum burial deposit and like the remains sampled by the current study these also date to the first two centuries of the fourth millennium BC. They pre-date remains from other excavated long barrows and cairns in Britain: as discussed by Whittle *et al.* [7] the dates for burials at Coldrum appear to precede more established use of long cairns and barrows elsewhere across Britain, which began at approximately 3800 cal BC.

The presence of remains that date to both the earlier and later fourth millennium BC in the group sampled during the present study is also consistent with the hypothesis of Wysocki *et al.* [14], based on the dated remains from the site that are of documented stratigraphic context, that Coldrum was used during at least two different periods during the fourth millennium BC (see above). If dates from the present study are included within the Bayesian model of Wysocki *et al.* [14] (model 2), which incorporates the ^{14}C dates for fragments of cranial vault of known stratigraphic context with those for unstratified skeletal elements attributed to the site, results suggest that early Neolithic activity began in 3980–3810 cal BC (95% probable) or 3970–3860 cal BC (68% probable; start Coldrum 1) and ended in 3940–3760 cal BC (95% probable) or 3860–3780 cal BC (68% probable; end Coldrum 1). The subsequent second phase of activity may then have occurred in the mid to late fourth millennium BC, beginning in 3720–3540 cal BC (95% probable) or 3660–3570 cal BC (68% probable; start Coldrum 2) and ending

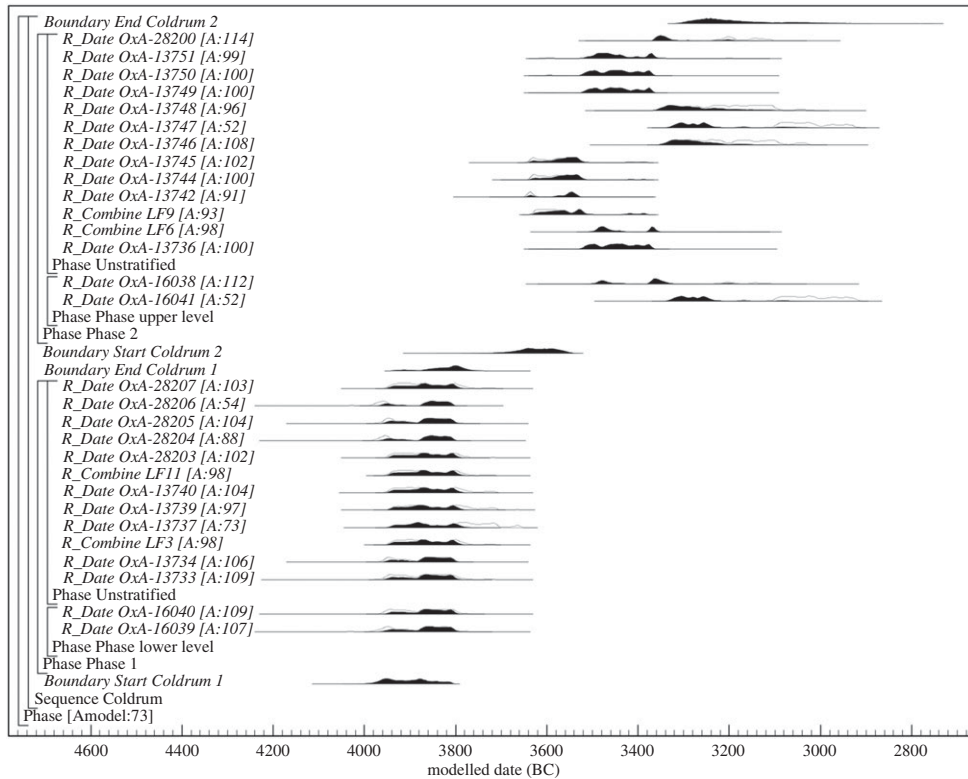


Figure 5. Bayesian model of radiocarbon dates from specimens of Neolithic date in the Coldrum collection, incorporating radiocarbon dates from the present study into the preferred model of Wysłocki *et al.* (model 2) [14].

in 3320–2980 *cal BC* (95% probable) or 3330–3140 *cal BC* (68% probable; end Coldrum 2; calibrated using IntCal20 and modelled using OxCal 4.4; figure 5) [15,16].

If converted to $\delta^{18}\text{O}_{\text{phosphate}}$, values of the second and third permanent molars of individuals dated to the fifth to seventh centuries AD range between 18.2 and 18.8‰ (mean $18.5 \pm 0.2\text{‰}$, 1σ , $n = 4$). Enamel $\delta^{18}\text{O}_{\text{phosphate}}$ values of the second and third permanent molars of individuals who date to the forty-first to thirty-eighth centuries BC range between 17.7 and 18.3‰ (mean $18.1 \pm 0.2\text{‰}$, 1σ , $n = 6$). Deciduous and first permanent molars have been excluded from the following comparisons, due to the potential influence of breastfeeding on values in enamel from early forming teeth (see above). The $\delta^{18}\text{O}$ values measured in enamel from the second and third permanent molars of both groups are not consistent with them having obtained their childhood diet from regions with a cold climate where individuals can exhibit $\delta^{18}\text{O}_{\text{phosphate}}$ values below approximately 15.5‰, or $\delta^{18}\text{O}_{\text{carbonate}}$ below approximately 24.5‰ (e.g. regions of Europe such as Scandinavia, or the Alps; figures 2 and 3) e.g. [47–53]. The values exhibited by both populations also contrast with those recorded in enamel from individuals who had migrated to temperate locations from regions with a cold climate, such as the migrant individuals of Early Medieval date excavated in Dorset, England or Dublin, Ireland (figure 2) [48–51].

The $\delta^{18}\text{O}$ values exhibited by both the individuals who date to the fourth millennium BC and those dated to the fifth to seventh century AD are comparable to those recorded in other archaeological populations buried in north-western Europe during the Holocene. Their $\delta^{18}\text{O}_{\text{phosphate}}$ values are consistent with the previously reported mean value of $17.7 \pm 1.4\text{‰}$ (2σ , $n = 615$) for Holocene human archaeological populations buried in Britain [59].

The $\delta^{18}\text{O}$ values in enamel of the individuals of fourth millennium BC date are also comparable to those previously recorded among populations excavated in southern England who date to this period and who also have $^{87}\text{Sr}/^{86}\text{Sr}$ values within the local bioavailable range for this region (figure 3). For example, $\delta^{18}\text{O}_{\text{phosphate}}$ values of second and third molar teeth from the fourth millennium BC population buried at Hazleton North, Gloucestershire, England range between 17.6 and 18.9‰ (mean $18.2 \pm 0.4\text{‰}$, 1σ , $n = 20$) [84], while in the population buried at Hambledon Hill, Dorset, England, $\delta^{18}\text{O}_{\text{phosphate}}$ values range between 18.0 and 19.5‰ (mean $18.5 \pm 0.4\text{‰}$, 1σ , $n = 23$) [87].

Tooth enamel from populations dated to the fifth to seventh century AD in Kent have also previously recorded $\delta^{18}\text{O}_{\text{phosphate}}$ values close to 18.0‰. Enamel from post-infant dentition (permanent premolars or

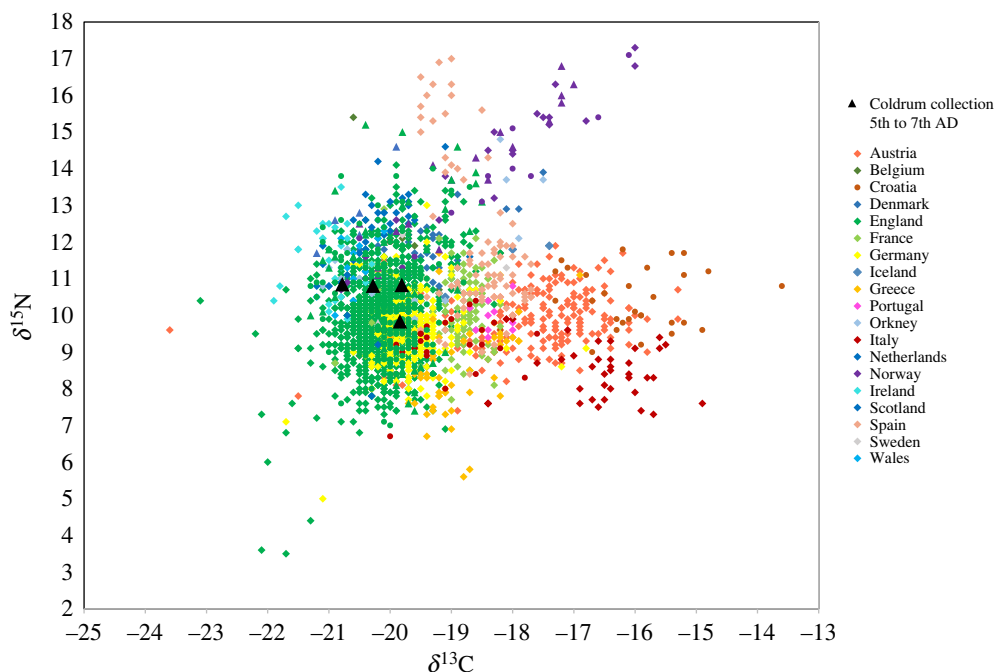


Figure 6. $\delta^{15}\text{N}\text{‰}$ (AIR) versus $\delta^{13}\text{C}\text{‰}$ (VPDB) values of collagen from individuals dated to the fifth to seventh centuries AD in the Coldrum collection, in comparison to populations buried in Europe during the Early Medieval period (fifth to tenth centuries AD) [98]. Triangles = first permanent molar teeth. Circles = permanent second molar, third molar and premolar teeth. Diamonds = adult bone collagen, from individuals whose skeletal age is estimated to be over 18 years at death.

second and third molars) from burials excavated from Ringlemere, Kent, has given values between 17.6 and 18.8‰ with a mean of 18.3‰ ($n = 7$) [60]. Similar $\delta^{18}\text{O}_{\text{phosphate}}$ values have also been recorded in burial populations of fifth to seventh century AD date with comparable $^{87}\text{Sr}/^{86}\text{Sr}$ values in other areas of southern Britain. Examples include Eastbourne, Sussex [94], and Berinsfield, Oxfordshire [95]. However, comparable values close to 18.0‰ are also recorded in populations buried on the immediately adjacent European mainland. Values from Sannerville and Giberville, near Caen in northern France, for example, range between 17.4 and 18.2‰, with a mean of 17.9‰ ($n = 11$) [60]. The strontium isotope ratios in enamel from these populations in northern France are also comparable to those recorded in the present study (*ibid.*).

Evans *et al.* [59] suggest that populations local to the eastern side of Britain, where rainfall levels are lower, may have lower $\delta^{18}\text{O}_{\text{phosphate}}$ ($17.2 \pm 1.3\text{‰}$, 2σ , $n = 83$) than those in western Britain ($18.2 \pm 1.0\text{‰}$, 2σ , $n = 40$) where there is higher rainfall. However, as discussed above, it has been shown that practices such as boiling water, brewing and stewing food alter the isotope composition of ingested fluids [44]. While $\delta^{18}\text{O}$ analysis has been shown to be of broader utility for distinguishing between regions of cold and temperate climate, the effect of culturally mediated behaviour may as such preclude its use for distinguishing between adjacent geographical areas within a temperate region [60]. Hence, although the $\delta^{18}\text{O}_{\text{phosphate}}$ values of the individuals who date to the fifth to seventh century AD ($18.2\text{--}18.8\text{‰}$, mean $18.5 \pm 0.2\text{‰}$, 1σ , $n = 4$) slightly exceed the range predicted by Evans *et al.* [59] for eastern Britain, this could be a consequence of culturally mediated behaviour that altered the isotope composition of ingested fluids, rather than an indication that the group was not local in origin to eastern Britain.

Both the individuals who date to the forty-first to thirty-eighth centuries BC and those who date to the fifth to seventh centuries AD have $\delta^{13}\text{C}_{\text{collagen}}$ and $\delta^{15}\text{N}$ values that are consistent with a C_3 terrestrial diet. In northwestern Europe values that are representative of a C_3 terrestrial diet range between 7 to 12‰ for $\delta^{15}\text{N}$ and -23 to -19‰ for $\delta^{13}\text{C}_{\text{collagen}}$ e.g. [96,97]. The individuals who date to the fifth to seventh centuries AD fall within this range (figure 6), with $\delta^{15}\text{N}$ values between 9.8 and 10.9‰ (mean $10.6 \pm 0.5\text{‰}$, 1σ , $n = 4$). Their $\delta^{13}\text{C}_{\text{collagen}}$ values range between -20.8 and -19.8‰ (mean $-20.2 \pm 0.5\text{‰}$, 1σ , $n = 4$). The individuals who date to the forty-first to thirty-eighth centuries BC also have $\delta^{15}\text{N}$ and $\delta^{13}\text{C}_{\text{collagen}}$ values that fall within this range (figure 7), with $\delta^{15}\text{N}$ between 8.4 and 9.1‰, (mean $8.7 \pm 0.3\text{‰}$, 1σ , $n = 5$) and $\delta^{13}\text{C}_{\text{collagen}}$ values between 21.8 and -20.4‰ (mean $-21.2 \pm 0.5\text{‰}$, 1σ , $n = 5$).

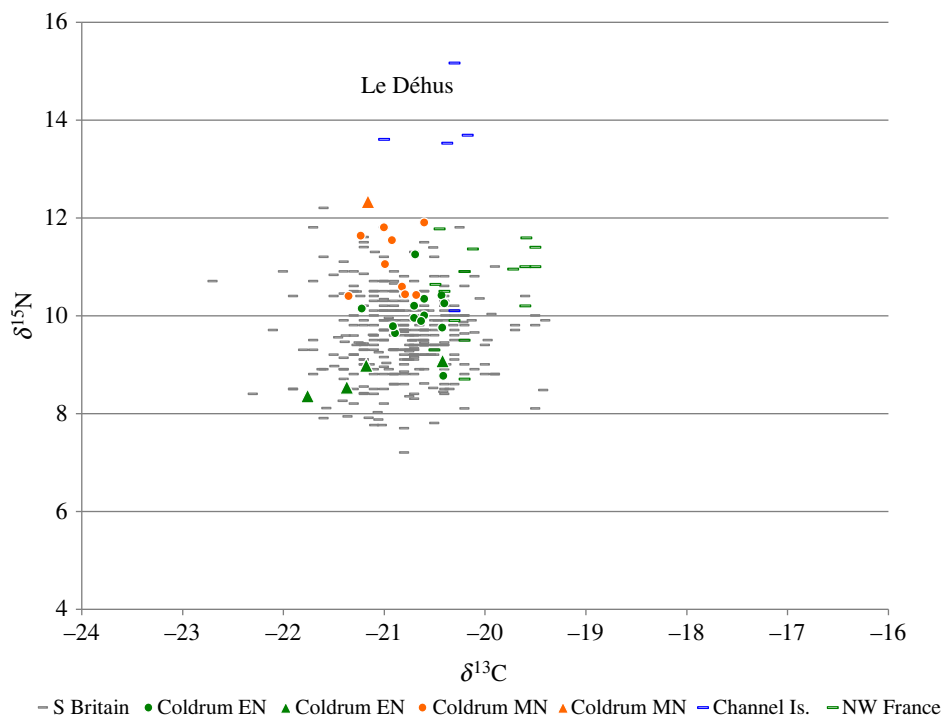


Figure 7. $\delta^{15}\text{N}\text{‰}$ (AIR) versus $\delta^{13}\text{C}\text{‰}$ (VPDB) values of collagen from individuals dated to the fourth millennium BC in the Coldrum collection, in comparison to populations of Neolithic date buried in England, Wales and the Channel Islands. Skeletal elements dated to the early Neolithic in the Coldrum collection = Green symbols; Mid to later Neolithic Coldrum collection = Orange symbols; Blue symbols = Le Déhus, Guernsey. Triangles = Data produced by this study; Circles = data from Wysocki *et al.* [14]. Grey dashes = Comparative data from populations buried in England and Wales during the fourth millennium BC. Data sources: [14,93,99–120].

The dietary isotope results, therefore, exclude a significant contribution to diet from marine or C_4 resources for both these groups. Both groups also have $\delta^{13}\text{C}_{\text{carbonate}}$ values that have been shown to be typical of a C_3 terrestrial diet, ranging between approximately -17.0 to -14.0‰ [73,74].

With the exception of Maidstone Museum specimen 6 (see above), dietary isotope analysis was conducted on bulk dentine from first molar tooth roots. The $\delta^{13}\text{C}_{\text{collagen}}$ and $\delta^{15}\text{N}$ results, therefore, represent the average of values that were incorporated during formation of the tooth roots. Formation of the roots of these teeth begins at approximately 3.5 ± 0.5 years and completes by approximately 7.5 ± 0.5 years of age [27]. As analysis was conducted on tooth root, rather than M1 crown dentine which begins to form earlier than this, the measured values are unlikely to have been affected by breastfeeding. Bone collagen from femora and fragments of cranial vault from adult individuals dated to the early fourth millennium BC attributed to Coldrum have previously been shown to have $\delta^{13}\text{C}_{\text{collagen}}$ and $\delta^{15}\text{N}$ values consistent with a terrestrial C_3 diet (mean $\delta^{13}\text{C}_{\text{collagen}} -20.7 \pm 0.3\text{‰}$ $n = 10$; $\delta^{15}\text{N}$ $10.1 \pm 0.7\text{‰}$, 1σ , $n = 10$) [14]. The $\delta^{13}\text{C}_{\text{collagen}}$ and $\delta^{15}\text{N}$ values recorded in the forty-first to thirty-eighth centuries BC population sampled by the present study are typical of the range of dietary isotope values found in fourth millennium BC populations buried in Britain (figure 7). This is consistent with the zooarchaeological evidence from this period which indicates a diet dominated by consumption of domesticated terrestrial resources and a shift away from the routine exploitation of marine resources [104,105,121–123].

As noted above, the only individual in this study where bone, rather than M1 tooth dentine was used for dietary isotope analysis was Maidstone Museum specimen 6. This is also the only individual sampled by this study who dates to the late fourth millennium BC, to 3369–3106 cal BC (table 1). Although the individual has a $\delta^{13}\text{C}_{\text{collagen}}$ value of -21.2‰ and $\delta^{13}\text{C}_{\text{carbonate}}$ value of -17.0‰ , typical of values within the C_3 terrestrial range for northwestern Europe, the individual has an elevated $\delta^{15}\text{N}$ value of 12.3‰ . This individual was aged approximately 18 months of age at death, and the effect of breastfeeding may therefore explain this high $\delta^{15}\text{N}$ value, due to the shift in trophic level that this induces [124,125]. However, as noted by Wysocki *et al.* [14], $\delta^{15}\text{N}$ values of adult individuals in the Coldrum collection who are attributed to the same secondary phase of use during the mid to late fourth millennium BC are also high, ranging between 9.6 and 11.3‰ with a mean $10.6 \pm 0.7\text{‰}$, (1σ , $n = 15$), when compared to the mean of 9.60 ± 0.84 (1σ , $n = 306$) for fourth millennium BC populations

buried across England and Wales (based on current data sources as cited in figure 7). $\delta^{13}\text{C}_{\text{collagen}}$ values of individuals in the Coldrum collection (mean $-20.9 \pm 0.3\text{‰}$, 1σ , $n = 15$) exclude the exploitation of marine resources as a reason for this. Wysłocki *et al.* [14] suggest several possible explanations for the elevated $\delta^{15}\text{N}$ values within the mid to late fourth millennium BC adult population from Coldrum, including consumption of manured cereal crops e.g. [126–129]; exploitation of freshwater fish e.g. [122,130], higher animal protein intake, or a greater emphasis on consumption of omnivorous species such as pigs rather than herbivores. As the site of Coldrum is located close to the Medway estuary, the exploitation of coastal marshes for animal pasture could also be a potential source for elevated $\delta^{15}\text{N}$ values, e.g. [131,132]. In the absence of any contemporary faunal samples from the site or its environs, however, it is not possible to distinguish between alternative explanations for the elevated adult $\delta^{15}\text{N}$ values for this period.

5. Conclusion

The Coldrum collection contains some of the earliest dated human remains associated with a Neolithic monument in Britain. It has therefore played a highly significant role in ongoing debate about the nature and timing of the transition to farming in Britain, e.g. [3–8]. However, this study has demonstrated that, while the collection contains human remains that date to the forty-first to thirty-eighth centuries BC, it also contains remains that date to the fifth to seventh centuries AD. The burial monument at Coldrum is of a type that is associated with of the earlier fourth millennium BC. Anglo-Saxon material culture is known from the site. There are documented examples of reuse of prehistoric monuments for burial during the Anglo-Saxon period, but the collection also has a complex curatorial history having been moved between multiple institutions in the century following its excavation. The possibility that the osteological collection from the Coldrum excavations was admixed with those from other sites prior to being transferred to the University of Cambridge following the Second World War should be considered.

The results of isotope analyses of enamel and dentine collagen assist in constraining the geographical origin of the individuals, by providing direct information as to where they obtained their childhood diet and their dietary composition. $^{87}\text{Sr}/^{86}\text{Sr}$ analysis rules out areas of radiogenic terrain (>0.711) as a source for the values that both the individuals of fifth to seventh centuries AD and those dated to the fourth millennium BC exhibit. In Europe, examples of areas that routinely record bioavailable values higher than 0.711 include the southwestern peninsula of England; Wales; Scotland; the Armorican Massif and Massif Central in France; Norway and Sweden (figure 4.) e.g. [23,24,80–82]. The $^{87}\text{Sr}/^{86}\text{Sr}$ values exhibited by both the individuals of the fifth to seventh centuries AD date and those of the fourth millennium BC are comparable to the local biosphere range (i.e. within 2 km) around Coldrum [24]. However, other areas within central southern Britain and northeastern France, the Netherlands and Belgium also have bioavailable values within the same range, e.g. [23,81,93]. $\delta^{18}\text{O}$ values recorded in enamel from both the individuals of fifth to seventh centuries AD date and those of fourth millennium BC date are routinely found in human populations buried in temperate northwestern Europe during the Holocene (figures 2 and 3). Both groups also have $\delta^{13}\text{C}_{\text{collagen}}$ and $\delta^{15}\text{N}$ values that are consistent with consumption of a C_3 terrestrial diet in northwestern Europe (figures 6 and 7). Values also exclude any significant consumption of either marine or C_4 plant resources.

It is not possible to visually distinguish between remains in the Coldrum collection that are of fifth to seventh centuries AD date and those of fourth millennium BC date. The results of this study demonstrate how multi-isotope analysis can provide direct and independent information about the provenance of remains in museum collections, while also providing new information about diet and mobility in the past. A substantial number of archaeological sites in Britain were excavated prior to the early twentieth century. These form the basis of major archaeological collections, such as those held in the Duckworth Collection at the University of Cambridge and that of the Natural History Museum in London. This study demonstrates how the application of biomolecular techniques can assist the study of antiquarian collections such as these. Expansion in the use of these techniques will further the study of collections that were excavated over a century ago, yielding significant new information about remains whose excavation context is poorly documented, e.g. [98,133,134]. Further advances in the field of biomolecular analysis, for example expansion in use of sulfur isotopes for geographical provenancing and evaluation of dietary composition, are also likely to assist future study of such collections, e.g. [135]

Ethics. Permission was provided by the University of Cambridge, Duckworth Laboratory and Maidstone Museum to conduct the analysis.

Data accessibility. All data are included within the manuscript.

Authors' contributions. S.N.: conceptualization, data curation, formal analysis, funding acquisition, investigation, methodology, project administration, writing—original draft, writing—review and editing; J.E.: formal analysis, writing—review and editing; J.M.: writing—review and editing; R.J.S.: writing—review and editing; C.S.: writing—review and editing.

All authors gave final approval for publication and agreed to be held accountable for the work performed therein. Conflict of interest declaration. There are no conflicts of interest to declare.

Funding. Strontium and oxygen isotope analysis was funded through NIGFSC grant IP-1290-0512 awarded to J.M. Carbon and nitrogen analysis at the University of Bradford was funded by J.M. Radiocarbon dating was funded by a NERC grant (number NF/2012/2/13) awarded to S.N. and C.S.

Acknowledgements. We would like to thank Prof. Marta Mirazon Lahr and the University of Cambridge for permission to sample specimens in the Duckworth Collection; and Giles Guthrie and Samantha Harris for permission to sample specimens from Maidstone Museum. We are grateful to Dr Clément Bataille for permission to reproduce the map in figure 1; to Prof. Tom Higham, University of Oxford, for discussion of radiocarbon dating; Jack Lacey and Angela Lamb (NEIF/BGS) for assistance with calibration of oxygen isotope data; and Andy Gledhill, University of Bradford, for assistance with carbon and nitrogen analysis. We would also like to thank anonymous reviewers for their comments on the manuscript.

References

- Shennan S. 2018 *The first farmers of Europe: an evolutionary perspective*. Cambridge, UK: Cambridge University Press.
- Tresselt A. 2015 Moving Animals and Plants in the Early Neolithic of North-Western Europe. In *The Oxford handbook of neolithic Europe* (eds C Fowler, J Harding, D Hofmann), pp. 121–138. Oxford, UK: Oxford University Press.
- Cummings V. 2017 *The neolithic of Britain and Ireland*. London, UK: Routledge.
- Ray K, Thomas J. 2018 *Neolithic Britain: the transformation of social worlds*. Oxford, UK: Oxford University Press.
- Sheridan A. 2010 The Neolithisation of Britain and Ireland: The big picture. In *Landscapes in transition* (eds B Finlayson, G Warren), pp. 89–105. Oxford, UK: Oxbow.
- Bayliss A, Healy F, Whittle A, Cooney G. 2011 Neolithic narratives: British and Irish enclosures in their timescapes. In *Gathering time: dating the early neolithic enclosures of southern Britain and Ireland*, pp. 682–847. Oxford, UK: Oxbow.
- Whittle A, Bayliss A, Healy F. 2011 Gathering time: the social dynamics of change. In *Gathering time: dating the early neolithic enclosures of southern Britain and Ireland*, pp. 848–914. Oxford, UK: Oxbow.
- Way A. 1856 Report to the central committee of the British archaeological association. *Archaeol. J.* **8**, 404.
- Ashbee P. 1998 Coldrum revisited and reviewed. *Archaeol. Cantiana* **78**, 1–43.
- Bennett F. 1910 Coldrum monument and exploration. *J. R. Anthropol. Inst.* **43**, 76–85.
- Keith A. 1913 Report on the human remains found by F.J. Bennett, Esq., F.G.S., in the central chamber of a megalithic monument at Coldrum, Kent. *J. R. Anthropol. Inst.* **43**, 86–100.
- Florde C. 1992 The Royal College of Surgeons of England: a brief history of its collections and a catalogue of some current holdings. *World Archaeol. Bull.* **6**, 22–31.
- Filkins E. 1928 Excavations at Coldrum, Kent. *Antiqu. J.* **8**, 356–357. (doi:10.1017/S0003581500092970)
- Wysocki M, Griffiths S, Hedges R, Bayliss A, Higham T, Fernandez-Jalvo Y, Whittle A. 2013 Dates, diet, and dismemberment: evidence from the Coldrum megalithic monument, Kent. *Proc. Prehist. Soc.* **79**, 61–90. (doi:10.1017/ppr.2013.10)
- Bronk Ramsey C. 2009 Bayesian analysis of radiocarbon dates. *Radiocarbon* **51**, 337–360. (doi:10.1017/S0033822200033865)
- Reimer PJ *et al.* 2020 The IntCal20 Northern Hemisphere radiocarbon age calibration curve (0–55 cal kBP). *Radiocarbon* **62**, 725–757. (doi:10.1017/RDC.2020.41)
- Faure G, Mensing TM. 2005 *Isotopes: principles and applications*, 3rd edn. Hoboken, NJ: John Wiley and Sons.
- Dickin AP. 2018 *Radiogenic isotope geology*. Cambridge, UK: Cambridge University Press.
- Bentley RA. 2006 Strontium isotopes from the Earth to the archaeological skeleton: a review. *J. Archaeol. Method Theory* **13**, 135–187. (doi:10.1007/s10816-006-9009-x)
- Graustein WC. 1989 $^{87}\text{Sr}/^{86}\text{Sr}$ ratios measure the sources and flow of strontium in terrestrial ecosystems. In *Stable isotopes in ecological research* (eds PW Rundel, JR Ehleringer, KA Nagy), pp. 491–512. New York: NY: Springer.
- Montgomery J. 2010 Passports from the past: investigating human dispersals using strontium isotope analysis of tooth enamel. *Ann. Hum. Biol.* **37**, 325–346. (doi:10.3109/03014461003649297)
- Slovak NM, Paytan A. 2011 Applications of Sr isotopes in archaeology. In *Handbook of environmental isotope geochemistry* (eds M Baskaran), pp. 743–768. Berlin, Germany: Springer.
- Bataille CP, von Holstein ICC, Laffoon JE, Willmes M, Liu X-M, Davies GR. 2018 A bioavailable strontium isoscape for Western Europe: a machine learning approach. *PLoS ONE* **13**, e0197386.
- Evans JA, Chenery CA, Mee K, Cartwright CE, Lee KA, Marchant AP, Hannaford L. 2018 Biosphere Isotope Domains GB (V1): interactive website. *Br. Geol. Surv.* (doi:10.5285/3b141dce-76fc-4c54-96fa-c232e98010ea). (accessed October 2021).
- Holt E, Evans JA, Madgwick R. 2021 Strontium ($^{87}\text{Sr}/^{86}\text{Sr}$) mapping: a critical review of methods and approaches. *Earth Sci. Rev.* **2021**, 103593. (doi:10.1016/j.earscirev.2021.103593)
- Hillson S. 2014 *Tooth development in human evolution and bioarchaeology*. Cambridge, UK: Cambridge University Press.
- AlQahtani SJ, Hector MP, Liversidge HM. 2010 Brief communication: the London atlas of human tooth development and eruption. *Am. J. Phys. Anthropol.* **142**, 481–490. (doi:10.1002/ajpa.21258)
- Liversidge HM. 2008 Timing of human mandibular third molar formation. *Annu. Hum. Biol.* **35**, 294–321. (doi:10.1080/03014460801971445)
- Chenery CA, Pashley V, Lamb AL, Sloane HJ, Evans JA. 2012 The oxygen isotope relationship between the phosphate and structural carbonate fractions of human bioapatite. *Rapid Commun. Mass Spectrom.* **26**, 309–319. (doi:10.1002/rcm.5331)
- Pederzani S, Britton K. 2019 Oxygen isotopes in bioarchaeology: principles and applications, challenges and opportunities. *Earth Sci. Rev.* **188**, 77–107. (doi:10.1016/j.earscirev.2018.11.005)
- Gat JR. 2010 *Isotope hydrology: a study of the water cycle*. London, UK: Imperial College Press.
- Mook WG. 2005 Introduction to isotope hydrology: Stable and radioactive isotopes of hydrogen, carbon, and oxygen. In *IAH international contributions to hydrogeology*, vol. **25**. Leiden, The Netherlands: Taylor & Francis.
- Longinelli A. 1984 Oxygen isotopes in mammal bone phosphate: a new tool for paleohydrological and paleoclimatological research? *Geochim. Cosmochim. Acta* **48**, 385–390. (doi:10.1016/0016-7037(84)90259-X)
- Luz B, Kolodny Y, Horowitz M. 1984 Fractionation of oxygen isotopes between mammalian bone-phosphate and environmental drinking water.

- Geochim. Cosmochim. Acta* **48**, 1689–1693. (doi:10.1016/0016-7037(84)90338-7)
35. Luz B, Kolodny Y. 1985 Oxygen isotope variations in phosphate of biogenic apatites, IV. Mammal teeth and bones. *Earth Planet. Sci. Lett.* **75**, 29–36. (doi:10.1016/0012-821X(85)90047-0)
 36. Levinson AA, Luz B, Kolodny Y. 1987 Variations in oxygen isotopic compositions of human teeth and urinary stones. *Appl. Geochemistry* **2**, 367–371. (doi:10.1016/0883-2927(87)90021-7)
 37. Renou J-P, Deponge C, Gachon P, Bonnefoy J-C, Coulon J-B, Garel J-P, Vérité R, Ritz P. 2004 Characterization of animal products according to geographic origin and feeding diet using nuclear magnetic resonance and isotope ratio mass spectrometry: cow milk. *Food Chem.* **85**, 63–66. (doi:10.1016/j.foodchem.2003.06.003)
 38. Camin F, Perini M, Colombari G, Bontempo L, Versin G. 2008 Influence of dietary composition on the carbon, nitrogen, oxygen and hydrogen stable isotope ratios of milk. *Rapid Commun. Mass Spectrom.* **22**, 1690–1696. (doi:10.1002/rcm.3506)
 39. Lin GP, Rau YH, Chen YF, Chou CC, Fu WF. 2003 Measurements of δD and $\delta^{18}O$ stable isotope ratios in milk. *J. Food Sci.* **69**, 2192–2195. (doi:10.1111/j.1365-2621.2003.tb05745.x)
 40. Kornel BE, Werner R, Rossmann A, Schmidt H-L. 1997 Measurement of stable isotope abundances in milk and milk ingredients—a possible tool for origin assignment and quality control. *Z. Lebensmitteluntersuchung Forschung A* **205**, 19–24. (doi:10.1007/s002170050117)
 41. Roberts SB, Coward WA, Ewing G, Savage J, Cole TJ, Lucas A. 1988 Effect of weaning on accuracy of doubly labelled water method in infants. *Am. J. Physiol.-Regul. Integr. Comp. Physiol.* **254**, R622–R627. (doi:10.1152/ajpregu.1988.254.4.R622)
 42. Wright LE, Schwarcz HP. 1998 Stable carbon and oxygen isotopes in human tooth enamel: identifying breastfeeding and weaning in prehistory. *Am. J. Phys. Anthropol.* **106**, 1–18. (doi:10.1002/(SICI)1096-8644(199805)106:1<::AID-AJPA1>3.0.CO;2-W)
 43. Britton K, Fuller BT, Tütken T, Mays S, Richards MP. 1998 Oxygen isotope analysis of human bone phosphate evidences weaning age in archaeological populations. *Am. J. Phys. Anthropol.* **157**, 226–241. (doi:10.1002/ajpa.22704)
 44. Brettell R, Montgomery J, Evans JA. 2012 Brewing and stewing: the effect of culturally mediated behaviour on the oxygen isotope composition of ingested fluids and the implications for human provenance studies. *J. Anal. At. Spectrom.* **27**, 778–785. (doi:10.1039/c2ja10335d)
 45. Plomp E, von Holstein IC, Kootker LM, Verdegaaal-Warmerdam SJ, Forouzanfar T, Davies GR. 2020 Strontium, oxygen, and carbon isotope variation in modern human dental enamel. *Am. J. Phys. Anthropol.* **172**, 586–604. (doi:10.1002/ajpa.24059)
 46. Lightfoot E, O'Connell TC. 2016 On the use of biomineral oxygen isotope data to identify human migrants in the archaeological record: intra-sample variation, statistical methods and geographical considerations. *PLoS ONE* **11**, e0153850. (doi:10.1371/journal.pone.0153850)
 47. Müller W, Fricke F, Halliday AN, McCulloch MT, Wartho J-A. 2003 Origin and Migration of the Alpine Iceman. *Science* **302**, 862–866. (doi:10.1126/science.1089837)
 48. Knudson KJ, O'Donnabhain B, Carver C, Cleland R, Price TD. 2012 Migration and Viking Dublin: paleomobility and paleodiet through isotopic analyses. *J. Archaeol. Sci.* **39**, 308–320. (doi:10.1016/j.jas.2011.09.014)
 49. Montgomery J, Grimes V, Buckberry J, Evans JA, Richards MP, Barrett JH. 2014 Finding Vikings with isotope analysis: the view from wet and windy Islands. *J. N. Atl.* **7**, 54–70. (doi:10.3721/037.002.sp705)
 50. Chenery CA, Evans JA, Score D, Boyle A, Chenery SR. 2014 A Boat Load of Vikings? *J. N. Atl.* **7**, 43–53. (doi:10.3721/037.002.sp704)
 51. Evans JA, Pashley V, Chenery CA, Loe L, Chenery SR. 2018 Lead isotope analysis of tooth enamel from a Viking Age mass grave in Southern Britain and the constraints it places on the origin of the individuals. *Archaeometry* **60**, 859–869. (doi:10.1111/arc.12361)
 52. Price TD, Naumann E. 2014 The peopling of the north atlantic: isotopic results from Norway. *J. N. Atl.* **7**, 88–102. (doi:10.3721/037.002.sp706)
 53. Wilhelmson H, Price TD. 2017 Migration and integration on the Baltic island of Öland in the Iron Age. *J. Archaeol. Sci.: Rep.* **12**, 183–196. (doi:10.1016/j.jasrep.2017.01.031)
 54. Montgomery J. 2002 Lead and Strontium Isotope Compositions of Human Dental Tissues as an Indicator of Ancient Exposure and Population Dynamics: The application of isotope source-tracing methods to identify migrants among British archaeological burials and a consideration of ante-mortem uptake, tissue stability and post-mortem diagenesis. PhD thesis, University of Bradford.
 55. Budd P, Montgomery J, Barreiro B, Thomas RG. 2000 Differential diagenesis of strontium in archaeological human dental tissues. *Appl. Geochem.* **15**, 687–694. (doi:10.1016/S0883-2927(99)00069-4)
 56. Trickett MA, Budd P, Montgomery J, Evans JA. 2003 An assessment of solubility profiling as a decontamination procedure for the $^{87}Sr/^{86}Sr$ analysis of archaeological human skeletal tissue. *Appl. Geochem.* **18**, 653–658. (doi:10.1016/S0883-2927(02)00181-6)
 57. Birk JL. 1986 Precision K-Rb-Sr isotopic analysis: application to Rb-Sr chronology. *Chem. Geol.* **56**, 73–83. (doi:10.1016/0009-2541(86)90111-7)
 58. Kim ST, Coplen TB, Horita J. 2015 Normalization of stable isotope data for carbonate minerals: implementation of IUPAC guidelines. *Geochim. Cosmochim. Acta* **158**, 276–289. (doi:10.1016/j.gca.2015.02.011)
 59. Evans EA, Chenery CA, Montgomery J. 2012 A summary of strontium and oxygen isotope variation in archaeological human tooth enamel excavated from Britain. *J. Anal. At. Spectrom.* **27**, 754–764. (doi:10.1039/c2ja10362a)
 60. Brettell R, Evans JA, Marzink S, Lamb A, Montgomery J. 2012 Impious Easterners': can oxygen and strontium isotopes serve as indicators of provenance in early medieval European cemetery populations? *Eur. J. Archaeol.* **15**, 117–145. (doi:10.1179/1461957112Y.0000000001)
 61. Bronk Ramsey C, Higham T, Leach P. 2004 Towards high precision AMS: progress and limitations. *Radiocarbon* **46**, 17–24. (doi:10.1017/S0033822200039308)
 62. Brock F, Bronk Ramsey C, Higham T. 2007 Quality assurance of ultrafiltered bone dating. *Radiocarbon* **2007**, 187–192. (doi:10.1017/S0033822200042107)
 63. Brock F, Higham T, Ditchfield P, Bronk Ramsey C. 2010 Current pretreatment methods for AMS radiocarbon dating at the Oxford Radiocarbon Accelerator Unit (ORAU). *Radiocarbon* **52**, 103–112. (doi:10.1017/S0033822200045069)
 64. Dee M, Bronk Ramsey C. 2000 Refinement of the graphite target production at ORAU. *Nucl. Instrum. Methods Phys. Res. B* **172**, 449–453. (doi:10.1016/S0168-583X(00)00337-2)
 65. Schwarcz HP, Schoeninger MJ. 2011 Stable isotopes of carbon and nitrogen as tracers for paleo-diet reconstruction. In *Handbook of environmental isotope geochemistry. Volume 1* (ed. M Baskaran), pp. 725–742. Berlin, Germany: Springer.
 66. Sponheimer MJ, Cerling TE. 2014 Investigating Ancient Diets Using Stable Isotopes in Biopatites. In *Treatise on geochemistry* (eds HD Holland, KK Turekian), pp. 341–355, Second edition. Oxford, UK: Elsevier.
 67. Szpak P. 2014 Complexities of nitrogen isotope biogeochemistry in plant-soil systems: implications for the study of ancient agricultural and animal management practices. *Front. Plant Sci.* **5**, 288. (doi:10.3389/fpls.2014.00288)
 68. Heaton THE. 1999 Spatial species and temporal variation in the $^{13}C/^{12}C$ ratios of C_3 plants: implication for paleodiet studies. *J. Archaeol. Sci.: Rep.* **26**, 637–649. (doi:10.1006/jasc.1998.0381)
 69. Van Klinken GJ, Richards MP, Hedges RE. 2002 An overview of causes for stable isotopic variations in past European human populations: environmental, ecophysiological, and cultural effects. In *Biogeochemical Approaches to Paleodietary Analysis*, pp. 39–63.
 70. Goude G, Fontugne M. 2016 Carbon and nitrogen isotopic variability in bone collagen during the Neolithic period: influence of environmental factors and diet. *J. Archaeol. Sci.: Rep.* **70**, 117–131. (doi:10.1016/j.jas.2016.04.019)
 71. Ambrose SH, Norr L. 1993 Experimental evidence for the relationship of the carbon isotope ratios of whole diet and dietary protein to those of bone collagen and carbonate. In *Prehistoric human bone: archaeology at the molecular level* (eds JB Lambert, L Norr), pp. 1–38. New York, NY: Springer.
 72. Jim S, Ambrose SH, Evershed RP. 2004 Stable carbon isotopic evidence for differences in the dietary origin of bone cholesterol, collagen and apatite: implications for their use in palaeodietary reconstruction. *Geochim. Cosmochim. Acta* **68**, 61–72. (doi:10.1016/S0016-7037(03)00216-3)

73. Kellner CM, Schoeninger MJ. 2007 A simple carbon isotope model for reconstructing prehistoric human diet. *Am. J. Phys. Anthropol.* **133**, 1112–1127. (doi:10.1002/ajpa.20618)
74. Froehle AW, Kellner CM, Schoeninger MJ. 2012 Multivariate carbon and nitrogen stable isotope model for the reconstruction of prehistoric human diet. *Am. J. Phys. Anthropol.* **147**, 352–369. (doi:10.1002/ajpa.21651)
75. Filipović D *et al.* 2020 New AMS ^{14}C dates track the arrival and spread of broomcorn millet cultivation and agricultural change in prehistoric Europe. *Sci. Rep.* **10**, 1–18. (doi:10.1038/s41598-020-70495-z)
76. Sharp Z. 2017 *Principles of stable isotope geochemistry*, 2nd edn. Published online. (doi:10.25844/h9q1-0p82)
77. Van Klinken GJ. 1999 Bone collagen quality indicators for palaeodietary and radiocarbon measurements. *J. Archaeol. Sci.: Rep.* **26**, 687–695. (doi:10.1006/jasc.1998.0385)
78. Leggett SA, Rose A, Praet E, Le Roux P. 2021 Multi-tissue and multi-isotope ($\delta^{13}\text{C}$, $\delta^{15}\text{N}$, $\delta^{18}\text{O}$ and $^{87}\text{Sr}/^{86}\text{Sr}$) data for early medieval human and animal palaeoecology. *Ecology* **102**, e03349. (doi:10.1002/ecy.3349)
79. Neil S, Evans JA, Montgomery J, Scarre C. 2016 Isotopic evidence for residential mobility of farming communities during the transition to agriculture in Britain. *R. Soc. Open Sci.* **3**, 150522. (doi:10.1098/rsos.150522)
80. Neil S, Montgomery J, Evans JA, Cook GT, Scarre C. 2017 Land use and mobility during the Neolithic in Wales explored using isotope analysis of tooth enamel. *Am. J. Phys. Anthropol.* **164**, 371–393. (doi:10.1002/ajpa.23279)
81. Neil S, Evans JA, Montgomery J, Scarre C. 2020 Isotopic evidence for human movement into Central England during the Early Neolithic. *Eur. J. Archaeol.* **23**, 512–529. (doi:10.1017/ea.2020.22)
82. Neil S, Evans JA, Montgomery J, Scarre C. 2018 Isotopic evidence for landscape use and the role of Causewayed Enclosures during the earlier Neolithic in Southern Britain. *Proc. Prehist. Soc.* **84**, 185–205. (doi:10.1017/ppr.2018.6)
83. Williams H. 1997 Ancient Landscapes and the Dead: the reuse of prehistoric and roman monuments as early anglo-saxon burial sites. *Mediev. Archaeol.* **41**, 1–32. (doi:10.1080/00766097.1997.11735606)
84. Williams H. 1998 Monuments and the past in early Anglo-Saxon England. *World Archaeol.* **30**, 90–108. (doi:10.1080/00438243.1998.9980399)
85. Semple S. 2018 *Perceptions of the prehistoric in anglo-saxon England*. Oxford, UK: Oxford University Press.
86. Blank M, Sjögren KG, Knipper C, Frei KM, Storå J. 2018 Isotope values of the bioavailable strontium in inland southwestern Sweden—A baseline for mobility studies. *PLoS ONE* **13**, e0204649.
87. Willmes M, Bataille CP, James HF, Moffat I, McMorrow L, Kinsley L, Armstrong RA, Eggins S, Grün R. 2018 Mapping of bioavailable strontium isotope ratios in France for archaeological provenance studies. *Appl. Geochem.* **90**, 75–86. (doi:10.1016/j.apgeochem.2017.12.025)
88. Price TD, Frein KM, Naumann E. 2015 Isotopic baselines in the North Atlantic Region. *J. N. Atl.* **7**, 103–136. (doi:10.3721/037.002.sp707)
89. British Geological Survey [BGS]/Natural Environment Research Council [NERC], DiGMapGB-50 (1:50,000 scale), 2021, Published online at <https://www.bgs.ac.uk/datasets/bgs-geology-50k-digmappgb/>
90. Kootker LM, van Lanen RJ, Kars H, Davies GR. 2016 Strontium isotopes in The Netherlands. Spatial variations in $^{87}\text{Sr}/^{86}\text{Sr}$ as a proxy for palaeomobility. *J. Archaeol. Sci.: Rep.* **6**, 1–13. (doi:10.1016/j.jasrep.2016.01.015)
91. Brace S *et al.* 2019 Ancient genomes indicate population replacement in Early Neolithic Britain. *Nat. Ecol. Evol.* **3**, 765–771. (doi:10.1038/s41559-019-0871-9)
92. Piolet H. 2015 Sociétés et Identités du Premier Néolithique de Grande-Bretagne et d'Irlande dans leur contexte ouest européen: caractérisation et analyses comparatives des productions céramiques entre Manche, Mer d'Irlande et Mer du Nord. PhD thesis, Durham University / Université de Rennes 1.
93. Bayliss A, Whittle A, Wysocki M. 2007 Talking about my generation: the date of the West Kennet long barrow. *Camb. Archaeol. J.* **17**, 85–101. (doi:10.1017/S0959774307000182)
94. Hughes SS, Millard AR, Chenery CA, Nowell G, Pearson DG. 2018 Isotopic analysis of burials from the early Anglo-Saxon cemetery at Eastbourne, Sussex, U.K. *J. Archaeol. Sci.: Rep.* **19**, 513–525. (doi:10.1016/j.jasrep.2018.03.004)
95. Hughes SS, Millard AR, Lucy SJ, Chenery CA, Evans JA, Nowell G, Pearson DG. 2014 Anglo-Saxon origins investigated by isotopic analysis of burials from Berinsfield, Oxfordshire, UK. *J. Archaeol. Sci.: Rep.* **42**, 81–92. (doi:10.1016/j.jas.2013.10.025)
96. Schulting RJ. 2017 Dietary shifts at the Mesolithic-Neolithic transition in Europe: an overview of the stable isotope data. In *The Oxford handbook of the archaeology of diet* (eds J Lee-Thorp, MA Katzenberg). Oxford, UK: Oxford University Press.
97. Schulting RJ, Borić D. 2017 A tale of two processes of Neolithisation: southeast Europe and Britain/Ireland. In *Neolithic Europe: essays in honour of professor alasdair whittle* (eds P Bickle, V Cummings, D Hofmann, J Pollard), pp. 82–104. Oxford, UK: Oxbow Books.
98. De Groot I, Bello SM, Kruszynski R, Compton T, Stringer C. 2014 Sir Arthur Keith's legacy: re-discovering a lost collection of human fossils. *Quat. Int.* **337**, 237–253. (doi:10.1016/j.quaint.2014.04.047)
99. Bayliss A, Benson D, Galer D, Humphrey L, McFadyen L, Whittle A. 2007 One thing after another: the date of the Ascott-under-Wychwood long barrow. *Camb. Archaeol. J.* **17**, 29–44. (doi:10.1017/S0959774307000157)
100. Gibson A, Bayliss A, Heard H, Mainland I, Ogden AR, Bronk Ramsey C, Cook G, van der Plicht J, Marshall P. 2009 Recent research at Duggleby Howe, North Yorkshire. *Archaeol. J.* **166**, 39–78. (doi:10.1080/00665983.2009.11078220)
101. Hamilton J, Hedges REM. 2011 Carbon and nitrogen stable isotope values of animals and humans from causewayed enclosures. In *Gathering time: dating the early neolithic enclosures of southern britain and Ireland* (eds A Whittle, F Healy, A Bayliss), pp. 670–681. Oxford, UK: Oxbow.
102. Healy F, Bayliss A, Whittle A. 2011 Sussex. In *Gathering time: dating the early neolithic enclosures of southern britain and Ireland* (eds A Whittle, F Healy, A Bayliss), pp. 207–262. Oxford, UK: Oxbow.
103. Hedges REM, Saville A, O'Connell TC. 2008 Characterizing the diet of individuals at the Neolithic chambered tomb of Hazleton North, Gloucestershire, England, using stable isotope analysis. *Archaeometry* **50**, 114–128. (doi:10.1111/j.1475-4754.2007.00379.x)
104. Parker Pearson M, Sheridan A, Jay M, Chamberlain A, Richards MP, Evans J (eds) 2019. *The beaker people: isotopes, mobility and diet in prehistoric britain*. Oxford, UK: Oxbow.
105. Richards MP. 2008 Hambledon Hill stable isotope values. In *Hambledon hill, dorset, England. Excavation and survey of a neolithic monument complex and its surrounding landscape* (eds RJ Mercer, F Healy), pp. 522–527. London, UK: English Heritage Archaeological Reports.
106. Scheib CL *et al.* 2019 East Anglian Early Neolithic monument burial linked to contemporary megalith. *Ann. Hum. Biol.* **46**, 145–149. (doi:10.1080/03014460.2019.1623912)
107. Schulting RJ. 2005 Comme la mer qui se retire: les changements dans l'exploitation des ressources marines du Mésolithique au Néolithique en Bretagne. In *Unité et diversité des processus de néolithisation sur la façade atlantique de l'Europe (7-4ème millénaires avant J.-C.)* (eds G Marchand, A Tresselt), pp. 163–171. Paris, France: Mémoire de la Société Préhistorique Française 36.
108. Schulting RJ. 2011 Mesolithic-Neolithic transitions: an isotopic tour through Europe. In *The bioarchaeology of the transition to agriculture* (eds R Pinhasi, J Stock), pp. 17–41. New York, NY: Wiley-Liss.
109. Schulting RJ. 2020 Claddidigaethau mewn ogofâu: prehistoric human remains (mainly) from the caves of Wales. *Proc. Univ. Bristol Spelaeol. Soc.* **28**, 185–219.
110. Schulting RJ, Chapman M, Chapman EJ. 2013 AMS ^{14}C dating and stable isotope (carbon, nitrogen) analysis of an earlier Neolithic human skeletal assemblage from Hay Wood Cave, Mendip, Somerset. *Proc. Univ. Bristol Spelaeol. Soc.* **26**, 9–26.
111. Schulting RJ, Fibiger L, Macphail RI, McLaughlin R, Murray EV, Price C, Walker EA. 2013 Mesolithic and Neolithic humans remains from Foxhole Cave (Gower, South Wales). *Antiqu. J.* **93**, 1–23. (doi:10.1017/S000358151300019X)
112. Schulting RJ, Gardiner P, Hawkes C, Murray EA. 2010 Mesolithic and Neolithic human bone assemblage from Totty Pot, Mendips, Somerset. *Proc. Univ. Bristol Spelaeol. Soc.* **25**, 75–95.

113. Schulting RJ, Parsons J, Pettitt PB, Higham TFG, Hedges JD, Richards MP. Belas Knap revisited: death, dating and diet at a Cotswold-Severn tomb. In prep.
114. Schulting RJ, Richards MP. 2002 The wet, the wild and the domesticated: the Mesolithic-Neolithic transition on the west coast of Scotland. *Eur. J. Archaeol.* **5**, 147–189.
115. Schulting RJ, Richards MP. 2002 Finding the coastal Mesolithic in southwest Britain: AMS dates and stable isotope results on human remains from Caldey Island, Pembrokeshire, South Wales, 2002. *Antiquity* **76**, 1011–1025. (doi:10.1017/S0003598X00091821)
116. Sheridan A, Schulting RJ, Quinnell H, Taylor R. 2008 Revisiting a small passage tomb at Broadlands, Devon. *Proc. Devon Archaeol. Explor. Soc.* **66**, 1–26.
117. Vyner B, Wall I. 2011 A Neolithic cairn at Whitwell, Derbyshire. *Derbys. Archaeol. J.* **131**, 1–131.
118. Whittle A, Bayliss A, Wysocki M. 2007 Once in a lifetime: the date of the Wayland's Smithy long barrow. *Camb. Archaeol. J.* **17**, 103–121. (doi:10.1017/S0959774307000194)
119. Whittle A, Wysocki M. 1998 Parc le Breos Cwm transepted long cairn, Gower, West Glamorgan: date, contents and context. *Proc. Prehist. Soc.* **64**, 139–182. (doi:10.1017/S0079497X00002206)
120. Wysocki M, Bayliss A, Whittle A. 2007 Serious mortality: the date of the Fussell's Lodge long barrow. *Camb. Archaeol. J.* **17**, 65–84. (doi:10.1017/S0959774307000170)
121. Schulting RJ. 2013 On the northwestern fringes: earlier Neolithic subsistence in Britain and Ireland as seen through faunal remains and stable isotopes. In *The origins and spread of stock-keeping in the near east and Europe* (eds S Colledge, J Conolly, K Dobney, K Manning, S Shennan), pp. 313–338. Walnut Creek, CA: Left Coast Press.
122. Richards MP, Schulting RJ, Hedges RE. 2003 Sharp shift in diet at onset of Neolithic. *Nature* **425**, 366. (doi:10.1038/425366a)
123. Schulting RJ. 2015 Stable isotopes and Neolithic subsistence: pattern and variation. In *The Oxford handbook of neolithic Europe* (eds C Fowler, J Harding, D Hofmann), pp. 361–384. Oxford, UK: Oxford University Press.
124. Fogel M, Tuross N, Owsley D. 1989 Nitrogen isotope tracers of human lactation in modern and archaeological populations. *Carnegie Inst. Wash. Yearb.* **88**, 111–117.
125. Fuller BT, Fuller JL, Harris DA, Hedges RE. 2006 Detection of breastfeeding and weaning in modern human infants with carbon and nitrogen stable isotope ratios. *Am. J. Phys. Anthropol.* **129**, 279–293. (doi:10.1002/ajpa.20249)
126. Bogaard A *et al.* 2013 Crop manuring and intensive land management by Europe's first farmers. *Proc. Natl Acad. Sci. USA* **110**, 12589–12594. (doi:10.1073/pnas.1305918110)
127. Fraser R *et al.* 2011 Manuring and stable nitrogen isotope ratios in cereals and pulses: towards a new archaeobotanical approach to the inference of land use and dietary practices. *J. Archaeol. Sci.: Rep.* **38**, 2790–2804. (doi:10.1016/j.jas.2011.06.024)
128. Bogaard A, Heaton T, Poulton P, Merbach I. 2007 The impact of manuring on nitrogen isotope ratios in cereals: archaeological implications for reconstruction of diet and crop management practices. *J. Archaeol. Sci.: Rep.* **34**, 335–343. (doi:10.1016/j.jas.2006.04.009)
129. Hedges R, Reynard L. 2007 Nitrogen isotopes and the trophic level of humans in archaeology. *J. Archaeol. Sci.: Rep.* **34**, 1240–1251. (doi:10.1016/j.jas.2006.10.015)
130. Bonsall C, Cook GT, Hedges R, Higham T, Pickard C, Radovanovic I. 2004 Radiocarbon and stable isotope evidence of dietary change from the Mesolithic to the Middle Ages in the Iron Gates: new results from Lepenski Vir. *Radiocarbon* **46**, 293–300. (doi:10.1017/S0033822200039606)
131. Britton K, Müldner G, Bell M. 2008 Stable isotope evidence for salt-marsh grazing in the Bronze Age Severn Estuary, UK: implications for palaeodietary analysis at coastal sites. *J. Archaeol. Sci.: Rep.* **35**, 2111–2118. (doi:10.1016/j.jas.2008.01.012)
132. Schulting R, Sebire H, Robb J. 2010 On the road to Paradis: new insights from AMS dates and stable isotopes at Le Déhus, Guernsey, and the Channel Islands middle Neolithic. *Oxf. J. Archaeol.* **29**, 149–173. (doi:10.1111/j.1468-0092.2010.00343.x)
133. Micheletti Cremasco M *et al.* 2021 Multi-proxy analysis suggests Late Pleistocene affinities of human skeletal remains attributed to Balzi Rossi. *J. Anthropol. Sci.* **99**, 19–60.
134. Villotte S, Henry-Gambier D. 2010 The rediscovery of two Upper Palaeolithic skeletons from Baouso da Torre cave (Liguria-Italy). *Am. J. Phys. Anthropol.* **141**, 3–6.
135. Nehlich O. 2015 The application of sulphur isotope analyses in archaeological research: a review. *Earth Sci. Rev.* **142**, 1–17. (doi:10.1016/j.earscirev.2014.12.002)