

**Villa rustica, villa suburbana:
Vernacular Italianate architecture in Britain,
1800 to 1860**

Rosemary Jane Yallop
Kellogg College

submitted for the degree of
Doctor of Philosophy in Architectural History
University of Oxford

Michaelmas 2016

Volume II of II

Contents

Appendix I: Illustrations:

Schedule of Illustrations.....	3
Illustrations.....	14
Appendix II: A Taxonomy of the Vernacular Italianate house.....	98
Appendix III: Bibliography.....	104

NOTE:

For copyright reasons, many of the illustrations contained in Appendices I and II of the original thesis have been redacted from this digital version, which has been deposited in the Oxford Research Archive (ORA).

Those in Appendix I which have been redacted are identified in the Schedule of Illustrations on pages 3-13 with the letter 'R'; this Schedule gives the locations where the originals may be viewed. The redacted images are also indicated individually in the Illustrations section which begins on page 14.

Appendix I: ILLUSTRATIONS

Schedule of Illustrations

Note: where references are to books or articles already listed in the Bibliography, they will be cited in their short form. 'IoE 999999' signifies an image from the Images of England database, cited in the Bibliography. Every effort has been made to trace and record the copyright holder where this is not immediately apparent from the description. **'R'** indicates that the image has been redacted in this digital ORA version.

No.	Type	Description and source	R
1.1	Photograph	Cronkhill, garden elevation; ©Martin David Photography	R
1.2	Photograph	Sandridge Park, garden elevation; Rosemary Yallop	
1.3	Photograph	Lissan Rectory; Rev. Alan Cross	R
1.4	Plates	James Peacocke, <i>Nutshells</i> , title page and Plates II and IV	R
1.5	Plates	Edward Gyfford, <i>Designs</i> , Plates XIX and XX	R
1.6	Plate	Richard Elsam, <i>Rural Architecture</i> , Plate 4	R
1.7	Plates	J.B. Papworth, <i>Rural Residences</i> , Plates XV and XVI	R
1.8	Watercolour	John James Chalon, <i>The garden front of Mr. Robert Vernon's house at Twickenham</i> , c.1840, Victoria & Albert Museum, 455-1875	R
1.9	Watercolour	Artist unknown, <i>Catford Hill House</i> , undated, ©Lewisham Archives, accessed at www.ideal-homes.org.uk/lewisham/assets/galleries/catford-house	R
2.1	Drawing	Robert Adam, <i>Sketch for Culzean Castle</i> , 1770s. Soane Coll. SM Adam Volume 37/9	R
2.2	Photograph	Downton Castle, Herefordshire: www.geograph.org.uk Photograph 1786753, ©Ian Capper	R
2.3	Painting	Claude Lorrain, <i>The Enchanted Castle</i> , c.1664. National Gallery, London, NG6471	R
2.4	Plates	Robert Lugar, <i>Architectural Sketches</i> , plates VIII, XIX, XXV and XXVI	R
2.5	Photograph	Longner Hall, Shropshire: © 2017 The DiCamillo Companion, Ltd.	R
2.6	Engraving	Castle House, Aberystwyth: http://www.aberystwythguide.org.uk/history/~1830-Castle_House-Aberystwith.jpg	R
2.7	Photograph	Luscombe Castle, Devon: ©Country Life	R
2.8a b	Photographs	Killymoon Castle: © www.panoramio.com/ricmen79 Caerhayes Castle: ©Country Life	R
3.1	Drawing	Bartholomeus Breenbergh, <i>View of Tivoli</i> , c.1620, Metropolitan Museum of Art, New York, MMA 63.2	R
3.2	Painting	Nicolaes Berchem, <i>Italian landscape with figures and animals: a village on a mountain plateau</i> , 1655. Royal Collection Trust, RCIN 404818	R
3.3	Painting	Claude-Joseph Vernet, <i>Cascades at Tivoli</i> , 1740s. Petit Palais, Musée des Beaux Arts de la Ville de Paris, PDUT00884	R
3.4	Painting	Claude Lorrain, <i>Landscape near Rome with a view of the Ponte Molle</i> , 1645, Birmingham Museum and Art Gallery, Acc. 1955P111	R
3.5	Watercolour	Joseph Gandy, <i>View near Campitello in the Italian Alps</i> , c.1795. Private collection.	R
3.6	Photograph	Porcelain designs, reproduced from Williams, <i>Antique Blue and White China</i>	R
3.7	Drawing	Schinkel, 'View of a peasant house', reproduced from Peik, p. 37	R
3.8	Plate	Durand, <i>Précis</i> , Book I, part 2, pl. 19	R
3.9	Plate	Seheult, <i>Recueil</i> , plate 10	R
3.10	Photograph	Maison du Jardinier, Clisson, http://www.latitude-gallimard.com/photos/itv-marie-richard-villa-lemot-part-maison-jardinier.jpg	R
3.11	Photograph	Charlottenhof, the Gardener's House: http://www.bdonline.co.uk/Pictures/web/w/i/g/Rmische_Bder_Kopie_read_v.jpg	R
3.12a b c	Photograph Watercolour Plate	Casina Giustiniani, Rome: from www.giustiniani.info Arthur Robinson, <i>Casale Cenci-Giustiniani</i> , 1843, New York Historical Society, Thomas Pritchard Rossiter Collection, no.1956.78.10 Charles Parker, <i>Villa Rustica</i> , Plate III	R
3.13	Photograph	Villa Poggiofrancoli, from Lazzaro, p. 354	R

3.14	Drawing	Fra Bartolomeo, <i>Farm on the slope of a hill</i> , c.1508, Cleveland Museum of Art, 57.498.	R
3.15a b	Drawing and Photograph	Reproduced from Dora Bassi, 'Una Fattoria in Valdichiana', accessed at www.accademiadeglioscuro.it	R
3.16	Photographs	Tuscan 'Leopoldinas': Rosemary Yallop	
3.17a b c d	Photographs	Tuscan rural building: private collection Tuscan rural building: private collection Tuscan rural building: reproduced from Stopani, p. 143 Tuscan rural building: reproduced from Stopani, p. 87	R R R R
3.18a b	Photograph Illustration	<i>A casa colonica</i> : reproduced from Stopani, p. 32 'Dwelling' from Loudon, <i>Encyclopedia</i> , fig. 102	R R
3.19	Photographs	Campagna, rural buildings, reproduced from Tagliaferri, pp. 108, 117	R
4.1	Photograph	Cronkhill, Shropshire: ©Martin David Photography	R
4.2	Watercolour	G.S. Repton, <i>Mr Welford's house near Shrewsbury</i> , Soane Coll. 73/5/2	R
4.3	Photograph	Attingham Park: www.attinghamtrust.org	R
4.4	Photograph	Cronkhill, old and new wings: Rosemary Yallop	
4.5	Photograph	Cronkhill, south elevation: ©Alan Foster	R
4.6	Photograph	Cronkhill, eastern elevation: ©Martin David Photography	R
4.7	Photograph	Cronkhill, the villa 'box': ©Motoeque	R
4.8	Photograph	Cronkhill, view eastwards from Loggia to the Wrekin: ©Flickriver/Dubris	R
4.9	Photograph	Cronkhill, entrance in north front: Rosemary Yallop	
4.10a b	Photographs	Cronkhill, loggia detail: Rosemary Yallop Cronkhill, loggia detail: Rosemary Yallop	
4.11	Plan	Cronkhill, plan re-drawn by Mark Yallop, based on Davis, <i>Architecture</i> , Plan 4	R
4.12	Photograph	Cronkhill, entrance hall: ©Country Life	R
4.13	Photograph	Cronkhill, staircase with door to square tower room: ©Country Life	R
4.14	Photograph	Cronkhill, rear elevation: Rosemary Yallop	
4.15	Photograph	Sandridge Park in 2012: Rosemary Yallop	
4.16	Engraving	T.H Shepherd, Sandridge Park, 1829, in Moore, (un-numbered)	R
4.17	Watercolours	Unnamed artist, Sandridge Park, 19 th century. Sold by Messrs Bonhams, Edinburgh, 24 October 2012, sale no.20510, lot 551. Private collection	R
4.18	Pen and wash	John Adey Repton, 'Conservatory similar to that at Sandridge', c.1810, RIBA Coll. SE20/12	R
4.19	Drawings	G.S. Repton, 'Greenhouse for Albury Park', reproduced from Temple, <i>Pavilion Notebook</i> , catalogued as PNB 26-29	R
4.20a b c	Photographs	Sandridge Park, south front, 1933, Sir John Summerson: ©English Heritage/National Monuments Record, B42-1520 Sandridge Park, conservatory from south-east, 1933, Sir John Summerson: ©English Heritage/National Monuments Record, B42-1521 Sandridge Park, south front, 1959, H. Felton: ©English Heritage/National Monuments Record, AA60-123	R R R
4.21	Plan	Sandridge Park, plan re-drawn by Mark Yallop based on Davis, <i>Architecture</i> , Plan 12	
4.22	Photograph	Sandridge Park, octagonal room at foot of square tower: Rosemary Yallop	
4.23	Photograph	Sandridge Park, staircase leading to drawing room: Rosemary Yallop	
4.24	Photograph	Sandridge Park, view from west through cutting: Rosemary Yallop	
4.25	Photograph	Lissan Rectory, early twentieth century: Rev Alan Cross	R
4.26a b	Drawings	G.S. Repton, Lissan Rectory, entrance and garden elevations: RIBA Coll. SKB246/4 ff.48v, 49r	R
4.27a b	Watercolours	Un-named artist, Lissan Rectory elevations; whereabouts unknown. Reproduced from RIBA Photographic Collection, nos. 12562-3	R
4.28a b	Photographs	Lissan Rectory, loggia, ©Northern Ireland Environment Agency, Built Heritage Division Lissan Rectory, loggia detailing, Rosemary Yallop	R
4.29	Plan	Lissan Rectory, reconstructed plan, reproduced from Jope, p. 123	R
4.30	Photographs	Lissan Rectory, staircase and drawing room: Rosemary Yallop	
4.31a b	Photographs	Lissan Rectory, front and garden elevations: ©Northern Ireland Environment Agency, Built Heritage Division	R R
4.32	Engraving	Richard Earlom, publisher, 'Landscape near Rome with a view of the Ponte	R

		Molle', engraved by John Boydell after Claude, London 1777	
4.33a	Drawings	Claude Lorrain: 'Torre Lazzaroni', ink and wash, 1650-60. Ashmolean Museum WA 1855.57	R
b		Claude Lorrain: 'Tomb of Cecilia Metella', ink and wash, 1669. Ashmolean Museum WA 1855.55	R
4.34a	Painting	Richard Wilson, <i>Holt Bridge on the River Dee</i> , 1762: National Gallery, London, NG6196	R
4.35	Painting	Simon Denis, <i>Sunset, Rome</i> , 1790: Metropolitan Museum of Art, New York Coll.2009.400.43	R
4.36a	Pen and wash	Francis Towne: 'Temple of Vesta', 1781. British Museum Nn.1.18	R
b	Engraving	Pietro Santi Bartoli: 'Scipio's Tomb', engraving, <i>Gli Antichi Sepolcri</i> . 1697: reproduced from Morley, p. 110	R
c	Watercolour	Sir John Soane: 'Design for a prospect tower for Ossington Hall', 1786, Soane Coll. 65/3/1	R
4.37	Photograph	Sandlin House, Leigh Sinton, Worcs: Messrs. Knight Frank property particulars June 2016, ref. WRC120017	R
4.38	Photograph	Round House, Havering-atte-Bower	R
4.39	Plates	James Peacocke, <i>Nutshells</i> , plates III and IV	R
4.40	Plates	Edward Gyfford, <i>Designs</i> , plates 2, 7, 8	R
4.41	Drawing	John Nash, <i>Scheme for the Park Village, Regent's Park</i> , 1823: The National Archives, MPE 1/911	R
4.42	Photograph	12 Park Village West, London: author's collection	R
4.43	Oil on panel	A.C. Pugin, cottage for Atcham, c.1800. National Trust Collection: NT ATT/D/028	R
4.44	Watercolour	G.S. Repton (attrib.), Panson Cottage, near Hereford, c.1802. Dumbarton Oaks Collection, Washington, D.C.	R
4.45	Drawing	G.S. Repton, design for a farmhouse: RIBA Coll. SKB246/4 f.88r	R
4.46	Drawing	G.S. Repton or John Adey Repton: drawing of a farmhouse, untitled, no date: Norfolk Record Office, Colman Collection, scrapbook of drawings by the Repton family, 712.6	R
5.1	Plate	James Randall, <i>Architectural Designs</i> , 'Casino in the Grecian style', Design II	R
5.2	Plate	Edward Edwards, <i>Treatise</i> , perspective drawing of building, Plate III	R
5.3a	Plates	Joseph Gandy: <i>Designs</i> , Plate XXI	R
b		<i>Rural Architect</i> , 'Dwelling for a farmer, or Inn', Plate XVII	R
c		<i>Rural Architect</i> , 'Two dwellings in the Italian style', Plate XXXIII	R
5.4a,	Plates	Robert Lugar, <i>Architectural Sketches</i> , 'Italian Villa', Plate XXVII	R
b		Plate XXVIII	R
c	Photograph	Robert Lugar, Dunstall Priory: ©John Topham/Topfoto.co.uk	R
5.5	Plate	Robert Lugar, <i>Country Gentleman's Architect</i> , Farmhouse design, plate 6	R
5.6a,	Plates	Edmund Aikin, <i>Designs</i> : 'Villa for a romantic situation', Plates XIV and XV	R
b			
c, d		Villa, front and rear elevations, Plates VI and VII	R
5.7	Plate	J.B. Papworth, 'Villa designed as the Residence of an Artist', in <i>Ackermann's Repository</i> , 1 May 1817	R
5.8	Plate	J.B. Papworth, 'Cottage orné', <i>Rural Residences</i> , Plate XIII	R
5.9a	Plate	Rev William Gunn, Romanesque campaniles, <i>Inquiry</i> , Plate 1	R
b	Plate	J.C. Loudon, campaniles, <i>Encyclopedia</i> , Figs 1694 and 1695	R
5.10	Plate	T.F. Hunt, Prospect tower, garden-seat, <i>Architettura Campestre</i> , Pl. IX	R
5.11	Plate	T.F. Hunt, Small villa, <i>Architettura Campestre</i> , Pl. XI	R
5.12	Plate	T.F. Hunt, Gate-lodge, <i>Architettura Campestre</i> , Pl. III	R
5.13	Plate	P.F. Robinson, 'Residence in the modern Italian style', <i>Ornamental Villas</i> , Design VIII	R
5.14a	Plates	P.F. Robinson, 'For a residence in the style of a building in Tuscany', <i>Ornamental Villas</i> , Design XVI	R
, b			
5.15a	Plates	P.F. Robinson, 'Italian and Farm Yard', <i>Designs for Farm Buildings</i> , Pl.30	R
b		P.F. Robinson, 'Italian Farm House', <i>Designs for Farm Buildings</i> , Pl.38	R
5.16a	Plates	Gilbert Laing Meason, 'From Titian', <i>Landscape Architecture</i> , Pl.1	R
b		Title page, <i>Landscape Architecture</i>	R
c		'Claude', <i>Landscape Architecture</i> , Pl.4	R
5.17	Plate	Edward Trendall, 'Italian villa', <i>Original Designs</i> , plate 19	R

5.18a b	Plate	Francis Goodwin, 'Italian Villa', entrance and garden fronts, <i>Domestic Architecture</i> , Vol. I, Design 13	R R
5.19	Plate	Francis Goodwin, 'Hunting lodge or villa in the Italian style', <i>Domestic Architecture</i> , Vol. II, Design 13	R
5.20	Watercolour	E.H. Browne, <i>Design for an Italian villa</i> , 1834: RIBA Coll.SC8/1(7)	R
5.21	Plate	Francis Goodwin, 'Modern Anglo-Italian villa', <i>Domestic Architecture</i> , Vol. II, Design 1	R
5.22 a-c d-f g-i j, k	Plates	Charles Parker, <i>Villa Rustica</i> : 'Outline taken from Raphael's villa, Borghese gardens', pls. I, II, III 'Design based on the 'Residence of a husbandman between Florence and Siena', pls. IV, V, VI 'Villa, arranged from a Bailiff's dwelling', pls. IX, X, XI 'Gate lodge based on an Apennine cottage', pls. XXXIII, XXXIV	R R R R R
5.23	Plate	Charles Parker, Roof tiles, <i>Villa Rustica</i> , Plate VII	R
5.24	Illustration	J.C. Loudon, 'Anglo-Italian villa', <i>Encyclopedia</i> , fig.1464	R
5.25	Illustration	J.C. Loudon, 'Italian villa on a considerable scale', <i>Encyclopedia</i> , fig.1658	R
5.26	Illustration	J.C. Loudon, Design IX 'small villa or parsonage in the Italian style', <i>Encyclopedia</i> , fig.1497.	R
5.27	Illustration	E.B. Lamb, 'Small villa in the modern style' in Loudon, <i>Encyclopedia Supplement</i> , fig.2150	R
5.28	Illustration	J.C. Loudon, 'Cottage for a couple in the Italian style', <i>Encyclopedia</i> , paras.138-42	R
5.29	Illustration	J.C. Loudon, 'Double detached house in the Italian style', <i>Suburban Gardener</i> , fig.119	R
5.30	Illustration	E.B. Lamb, 'Suburban Villa in the Italian style', in Loudon, <i>Suburban Gardener</i> , fig.188	R
5.31	Illustration	George Wightwick, 'Anglo-Italian Villa', <i>Palace</i> , p. 200	R
5.32	Illustration	Richard Brown, 'Anglo-Italian Villa', <i>Domestic Architecture</i> , p. 291	R
5.33a b	Plates	Edward Tarbuck, 'Suburban Villa', <i>Builder's Practical Director</i> , Plate 115 Edward Tarbuck, 'Detached villa', <i>Builder's Practical Director</i> , Plate 129	R R
5.34 a b c d e	Plates	E.L. Blackburne, <i>Suburban and Rural Architecture</i> : 'Pair of villas, Anglo-Italian', pl. 1 'A detached villa –Rustic Italian', Design 35 'A pair of seven-roomed villas, semi-detached – Italian', Design 15 'Semi-detached villas, Italian', Design 29 'Semi-detached villas, Italian', Design 27	R R R R R
5.35a b	Illustrations	Thomas Morris, 'Glebe House' and 'Semi-detached houses', <i>A House for the Suburbs</i>	R
5.36	Illustration	Robert Kerr, 'Rural-Italian Style', <i>Gentleman's House</i> , p. 356	R
6.1a b	Plate Photograph	[See 5.10] Farley Lane Lodge, Alton Towers, Staffordshire IoE 275133 ©Donald Pittman	R R
6.2a b	Photograph Photograph	Barbrook, Edensor: accessed at www.countryimagesmagazine.co.uk/lost_houses Park Lodge, Baslow: RIBApix 18013	R R
6.3	Photograph	Dunstall Priory, garden front: ©John Topham/TopFoto.co.uk	R
6.4a b	Photograph Plate	Dunstall Priory, entrance front: ©John Topham/TopFoto.co.uk [See 5.4]	R R
6.5	Photograph	Wood Hall, Yorkshire: Georgian Society for East Yorkshire/Hull University Archives DX/99/262	R
6.6	Pen and wash	'Villa at Herne Hill', Lambeth Archives, Phillips Collection, Coll. No.2278	R
6.7	Engraving	Sandycombe Lodge, W.B. Cooke after William Havell, 1814: Tate Gallery T06433	R
6.8 a b c	Drawings	J.M.W. Turner, Designs for Sandycombe Lodge: Sandycombe and Yorkshire sketchbook, CXXVII-15, D08985 Windmill and Lock sketchbook, CXIV-77a, D08065 Drawings, CXX-R, D08232	R R R
6.9	Photograph	Bute Lodge, Twickenham: IoE 205598 ©Stephen Richards	R
6.10	Photograph	Brooklands, Blackheath: IoE 397456 ©Adam Watson	R
6.11	Photograph	The Cupola, Hastings: IoE293722 ©Claire Pearce	R
6.12	Engraving	Caen Lodge, Twickenham, c1830s: accessed at www.twickenham-museum.org	R

6.13	Watercolour	John Chessell Buckler, Bromley Hill, c.1815: Wakefield Collection, Guildhall Library, K1229319	R
6.14	Photograph	Bromley Hill, c.1900: accessed at www.ideal-homes.org.uk/_data/assets/image/0006/356946/bromley-hill-house-00087-640.jpg	R
6.15	Illustration	Tue Brook Villa, in <i>The Gentleman's Magazine</i> , April 1840, p. 410	R
6.16 a, b	Drawings	John Hargrave: proposed alterations to Fort Stewart: PRONI D2358; reproduced from Dixon, <i>Ulster Architecture</i> , plate 9	R
6.17	Watercolour	William Henry Bartlett, <i>The Deepdene, entrance court</i> , c.1825, Minet Library, Lambeth, accessed at: www.vam.ac.uk/content/articles/t/thomas-hope/	R
6.18	Engraving	The Deepdene, north-west front, from Neale, <i>Views of Seats</i>	R
6.19	Photograph	Middle Lodge, Deepdene: IoE 475257 ©Peter Karry	R
6.20 a, b	Drawings	Alexander Roos, (attrib.) Alternative designs for Gardener's House, The Deepdene, c.1836-41: reproduced from Garnier, fig.20 and Morley, p. 118	R R
6.21	Watercolour	William Henry Bartlett, <i>The Deepdene, Dairy and domestic offices</i> , c.1825, Minet Library, Lambeth: reproduced from Watkin, <i>Hope</i> , pl. 59	R
6.22	Drawing	Thomas Hope, 'design for a villa', c.1801: reproduced from Watkin, <i>Hope</i> , pl.47 (detail)	R
6.23	Photograph	The Deepdene after re-modelling by Henry Hope, photographed in 1919: ©Dorking Museum, image k358	R
6.24	Illustration	Line drawing of Errwood by Alexander Beresford Hope, re-drawn in Watkin, <i>Hope</i> , fig. 21, p. 190	R
6.25	Photograph	Errwood Hall, Derbyshire, early 20 th century: accessed from www.goyt-valley.org	R
6.26	Lithograph	Thomas Allom, after Sir Charles Barry, <i>Proposal for Victoria Park, Brighton</i> , 1834: ©Messrs. Hewlett-Clarke, solicitors, Brighton	R
6.27a	Photograph	Attree Villa, Queen's Park, Brighton: ©The Regency Society, James Gray photographic collection, ref. JG_24_184.tif	R
b	Photograph	Lithograph by Waterlow & Co. from a photograph of 1863: ©The Regency Society, James Gray photographic collection, ref. JG_24_159.tif	R
6.28 a b c d e f	Drawings	Sir Charles Barry: Italianate villa designs for Queen's Park, reproduced from Blissett, 'A Re-assessment', figs. 222, 226 and 227 Alternative designs for the Attree Villa, reproduced from Blissett, 'A Re-assessment', figs. 229, 233 and 234	R R
6.29a	Photographs	Walton House, later Mount Felix, Surrey, early 20 th century, accessed at www.lostheritage.org.uk/graphics/houses/lh_surrey_mountfelix_fs_3	R
b	Photograph	Walton House. Belvedere, early 20 th century: accessed at www.walton-on-thames.org/mountfelix/images/image_20.html	R
6.30 a b	Drawings	Sir Charles Barry: Three Italianate cottages for Trentham village, c.1840: RIBA Coll. SC33/4(7), RIBApix66340 Police house, Trentham, C.1840: reproduced from Blissett, 'A Reassessment', fig.447; Collection of the Countess of Sutherland	R R
6.31	Photograph	Osborne House, Isle of Wight: ©English Heritage	R
6.32a	Photograph	Prince of Wales Lodge, Osborne: www.geograph.org.uk , photograph 4546601 ©Paul Farmer	R
b	Photograph	The Landing House, Osborne: reproduced from Turner, p. 36	R
6.33a	Drawing	Alexander Roos, perspective of Coddendam Lodge, Shrubland Park, 1845: reproduced from Garnier, fig. 44; Shrubland Archive	R
b	Drawing	Charles Parker, Design for a fishing lodge, <i>Villa Rustica</i> , Plate XL	R
c	Photograph	Coddendam Lodge, Shrubland Park: www.geograph.org.uk photograph 1334078 ©Oxymoron	R
6.34 a-c d e	Drawings Photograph Photograph	Alexander Roos, alternative designs for Ipswich Lodge, Shrubland Park: reproduced from Garnier, pp. 33, 34 and 46; Shrubland Archive Ipswich Lodge, Shrubland Park: www.geograph.org.uk photograph 348257 ©Robert Edwards Needham Lodge, Shrubland Park: www.geograph.org.uk photograph 4926712 ©Adrian Cable	R R R
6.35	Photograph	Burwarton Hall, Shropshire: reproduced from Leach, p. 224	R

6.36	Illustration	Anthony Salvin, double house for William Nesfield and himself, from <i>Gardener's Magazine</i> , Vol. VI, February 1840, p. 52.	R
6.37	Photograph	Italian lodge, Edensor, Derbyshire: accessed at www.flickrhivemind.net no.12989037765; copyright holder not found	R
6.38a	Photograph	Great Moulton Rectory: accessed at www.pilgrimbenefice.org.uk	R
b	Drawing	William Donthorn, Great Moulton Rectory: RIBApix 95307; RIBA Coll. SB77/6(6)	R
6.39	Drawing	William Donthorn, Stanground Manor, Cambridgeshire: RIBApix 65473; RIBA Coll. SD120/2(2)	R
6.40a	Photographs	Abberley Hall, Worcs.: accessed at www.molliet.ws/mansion.html	R
b			
6.41	Photograph	Bricklehampton Hall, Worcs.: www.panoramio.com 8145770 ©Graham Martin	R
6.42	Photograph	St Tewdric's Chepstow: ©Messrs. Newland Rennie, Chepstow	R
6.43	Photograph	High Hazels, Sheffield: IoE 458669 ©Barbara A. West	R
6.44	Engraving	Ockham Park, Surrey, from Brayley, Vol. II, facing p. 116	R
6.45	Photograph	Ashley Combe, Somerset: accessed at www.minehead-online.co.uk/Ashley	R
6.46a	Photograph	Belmont, Edinburgh: www.telegraph.co.uk , 4 May 2002	R
b	Drawing	William Playfair: University of Edinburgh Special Collections, Playfair Drawings, Coll. 13/34, 1648	R
6.47a	Photograph	Dunphail, Morayshire: www.canmore.org.uk/site/1333597 , image no. DP160884; ©RCAHMS	R
b	Drawing	William Playfair: University of Edinburgh Special Collections, Playfair Drawings, Coll. 13/32, 1579	R
6.48a	Photograph	Drumbanagher, Armagh: accessed at www.lordbelmontinnorthernireland.blogspot.com , posted 15 January 2015	R
b	Drawing	William Playfair: University of Edinburgh Special Collections, Playfair Drawings, Coll. 13/36, 1770	R
6.49	Drawing	William Playfair: University of Edinburgh Special Collections, Playfair Drawings, Coll. 13/42, 2549	R
6.50	Drawing	Thomas Duff, Proposed additions to Donard Lodge, Co. Down: reproduced from Dixon, Cat. 17	R
6.51	Photograph	Haddo House, Inverkeithney: www.geograph.org.uk 59523 ©C A Millar	R
6.52	Photograph	Thainstone House, Aberdeenshire: www.geograph.org.uk 2591477 ©Edward McMaihin	R
6.53a	Photograph	Linton House, Sauchen, Aberdeenshire: www.canmore.org.uk/collection990569 ©Ian Shepherd	R
b	Drawing	[See 4.46]	R
6.54	Photograph	Craig Ailey, Clydeside: www.rosneathpeninsulawest.com/wp-content/uploads/2015/09/Craig-Ailey-300x201.jpg	R
6.55a	Photographs	Montebello, Bathwick Hill: Bath and North East Somerset Council, <i>North Road and Cleveland Walk Character Appraisal</i> , cover page	R
b		Lodge to Montebello: Rosemary Yallop	R
c		Montebello campanile: Bathwick Hill: Bath and North East Somerset Council, <i>North Road and Cleveland Walk Character Appraisal</i> , p. 18	R
6.56	Photograph	Casa Bianca/La Casetta, Bathwick Hill: IoE 442339 ©Ann Canning	R
6.57a	Photographs	Fiesole, Bathwick Hill, garden elevation and entrance front: Rosemary Yallop	
b			
6.58a	Photographs	Oakwood, Bathwick Hill, from north and detail: Rosemary Yallop	
b			
6.59	Photograph	Marston Bigot Old Rectory: ©Messrs. Savills, Oxford	R
6.60	Engraving	Barcombe, Devon: author's collection	
6.61	Photograph	Aqueduct Hotel, Claverton (Pendragon House): author's collection	R
6.62	Photograph	Wadbury, Mells: author's collection	R
6.63	Photograph	Glen Avon, Bath: www.bathintime.co.uk image 21611/L156a/283 ©Bath in Time	R
6.64a	Drawings	John Harper, Design for a common dwelling house in the Italian style (detail): RIBA Coll. SE3/1(12), RIBApix 36828;	R
b		John Harper, Design for a cottage in the Italian style (detail): RIBA Coll. SE3/1(11), RIBApix 36827	R
c		John Harper, Design for a villa in the Italian style, RIBA Coll. SE3/1(3),	R

d		RIBApix 36819 John Harper, Design for a villa in the Italian style, rear elevation, RIBA Coll. SE3/1(4), RIBApix 36820	R
e		John Harper, Design for a gamekeeper's lodge in the Italian style, RIBA Coll. SE3/1(9), RIBApix 36825	R
f	Watercolour	John Harper, Perspective of an Italianate villa in a landscape, RIBA Coll. SD56/3, RIBApix 20712	R
6.65	Drawing	Thomas Trubshaw, Design for a lodge, RIBA Coll. SD125/3(5), RIBApix 31610	R
6.66a	Drawings	George Wightwick, Thornhill, near Plymouth: RIBA Coll. VOS201 f41, RIBApix 82277 and VOS201f39, RIBApix 82275	R
b			
c	Photograph	Ford Park, Plymouth: IoE 473387 ©Gerald Rendle	R
6.67	Engraving	G.H. Croydon (publ.), Bishopstowe House, Torquay, 1848: author's collection	
6.68	Photograph	Cowley House, St Helen's: http://www.themansionhouse.org.uk/wp-content/uploads/2015/09/mansionbw_3_thumb.jpg	R
6.69	Photograph	Halton Grange (Runcorn Town Hall): https://upload.wikimedia.org/wikipedia/commons/7/7f/Halton_Grange_Runcorn.jpg	R
6.70	Photograph	Underscar Manor, Keswick: www.geog.port.ac.uk/webmap/the_lakes/photos/byj18	R
6.71	Photograph	Pant-Glas, Carmarthen: © <i>The Daily Mail</i> , 28 December, 2011	R
6.72	Photograph	Nanteos Lodge, Ceredigion: www.parksandgardens.org : Nanteos PGDS2435	R
6.73	Photograph	Towerhurst, Leigh Woods, Bristol: author's collection	R
6.74	Photograph	Seggie House, St. Andrews: property particulars, ©Messrs. Savills, Edinburgh	R
6.75	Photograph	Holmwood, Glasgow: www.scotcities.com/thomson/holmwood	R
6.76a	Photograph	Craig Ailey, Clydeside: see 6.54 (detail)	R
b	Plate	Craig Ailey Villa, reproduced from Blackie, Plate XIX	R
6.77	Photograph	The Knowe, Glasgow: http://www.scotcities.com/thomson/knowe_front.jpg	R
6.78	Photograph	Tor House, High Craigmore: accessed at www.s1homes.com	R
6.79	Photograph	Arran View, Airdrie: www.geograph.org.uk photo 4093555 ©Anne Burgess	R
6.80	Plate	[See 5.7]	R
6.81	Plate	Oakleigh Villa, Loch Long: from Blackie, plate VI	R
7.1a	Photographs	High Hazels [See 6.43]	R
b		5 The Villas, Stoke-on-Trent: IoE 384495 ©Clive Shenton	R
c		The Cedars, Henwick Road, Worcester: IoE 147289 ©John Burrows	R
7.2	Engraving	Calverley Park, Tunbridge Wells, from <i>Thirty Views of Tunbridge Wells</i> , W.J. Spiers & Co. (publ.), (Tunbridge Wells, 1863)	R
7.3	Plate	'Villas of Calverley Park', from Britton, <i>Sketches</i> , Plate 3	R
7.4a	Photograph	No. 18 Calverley Park: www.geograph.org.uk 1175934 ©N. Chadwick	R
b	Plate	[See 5.4b]	R
c	Photograph	No. 23 Calverley Park: property particulars, ©Messrs. Knight Frank, Tunbridge Wells, ref. 32410971, 2014	R
d	Photograph	Keston Lodge, IoE 167906 ©Jane Comeau	R
7.5	Plate	Blackhurst, Kent, from Greenwood, <i>Epitome</i> http://www.tunbridgewells.gov.uk/_data/assets/pdf_file/0004/31954/Blackhurst-Park-Images.pdf	R
7.6a,	Photographs	Haydon Hill, Herts: IoE 164190 ©V.M. Geduld; www.hertfordshire-genealogy.co.uk	R
b			
7.7a	Photographs	Baston Lodge, Maze Hill, Hastings-St. Leonards: East Sussex Libraries: Frederick Broderick Collection H00017	R
b		Clone (Healey) House, Maze Hill, www.geograph.org.uk 2083787 ©David Kemp	R
7.8	Lithograph	Henry Kendall, Perspective design for Rosherville, Kent, 1837. RIBA Coll. SC185/2(1) RIBApix 83586	R
7.9	Photograph	Nos. 14-16 Curzon Park North, Chester: IoE 469735 ©Dr. R.A. Brierley	R
7.10a	Photograph	Nos. 1-2 Westover Villas: accessed at www.flickr.com/45065527eN08/5600830967	R
b	Engraving	Nos. 1-2 Westover Villas: accessed at www.flickrriver.com/photos/bournemouth_200/303571308	R
7.11	Lithograph	Benjamin Ferrey: proposed scheme for Bournemouth: ©Bournemouth	R

		Libraries	
7.12a b c d	Photographs	19 and 21 Eldon Square: Rosemary Yallop Rowson Street, New Brighton: IoE 444482 ©Dr. Geoffrey Court The Park, Ealing, reproduced from Summerson, <i>Unromantic Castle</i> , p. 221 Talbot Road, Notting Hill, London: Rosemary Yallop	R R
7.13a b c	Photographs	Nos. 1 and 2 Clifton Hill, Brighton: IoE 480516 ©Mary Allison Nos. 12-14 Fonnereau Road, Ipswich: IoE 428803 ©Stuart Grimwade Lansdowne Crescent, west London: Rosemary Yallop	R R
7.14a b	Photographs	Stanley Gardens, West London: Rosemary Yallop Pembroke Road, Bristol: Rosemary Yallop	
7.15a b	Photographs	Lansdown Court, Cheltenham: IoE 474980 ©David Ross Lansdown Court, Cheltenham, conservatory before demolition: http://viewfinder.historicengland.org.uk/gallery/450/AA0/AA092058.jpg	R R
7.16	Photograph	Park Crescent, Brighton: http://media.rightmove.co.uk/dir/36k/35084/44245252/35084_BTN140083_IMG_00_0001_max_656x437.JPG	R
7.17	Photographs	Gloucester Crescent, London: Rosemary Yallop	
7.18 a b	Photographs	Sandown Terrace, Chester: http://search.savills.com/content/assets/properties/gbterscss120114/CSS120114_01_gal.JPG http://media.rightmove.co.uk/14k/13115/35361224/13115_424099A_24099_IMG_01_0000.JPG	R R
7.19 a b	Photographs	Lypiatt Terrace, Cheltenham: http://media.rightmove.co.uk/dir/29k/28677/47158558/28677_CHE120240_IMG_88_0000_max_656x437.jpg http://li.zoocdn.com/3a6c1d80c94787289ca1148b26c28a1432ea2ff0_645_430.jpg	R R
7.20	Photograph	Cornerways, Cheltenham: reproduced from Mowl, 'Williamane', fig.14	
7.21	Photograph	York Terrace, Cheltenham: http://www.hanoverhouse.org/blog/wp-content/uploads/2012/07/York-Terrace-1943a.jpg	R
7.22	Photograph	Aerial photograph of the Ladbroke Estate, c.1921: http://www.britainfromabove.org.uk/sites/all/lib/aerofilms-images/zoomify/england/EPW005640/TileGroup0/2-0-1.jpg ©Britain from Above	R
7.23	Plan	Ground plan of Ladbroke Estate, c.1855: http://www.british-history.ac.uk/sites/default/files/publications/pubid-363/images/figure0363-057.jpg ©Corporation of London	R
7.24a b	Photographs	Lansdowne Crescent, Ladbroke Estate, west London: Rosemary Yallop	
7.25a b	Photographs	Ladbroke Estate, west London: Rosemary Yallop	
7.26	Photograph	Lansdowne Road, Ladbroke Estate: Rosemary Yallop	
7.27	Photograph	Kensington Park Terrace North, west London: Rosemary Yallop	
7.28	Photograph	Tor Gardens, Pitt Estate, Kensington: Rosemary Yallop	
7.29	Photograph	Westbourne Park Villas, Bayswater, west London: Rosemary Yallop	
7.30	Engraving	Eldon Square, Reading, c.1850: west side looking north: http://readingimages.epixtech.co.uk/loc/1210635.JPG , Reading Central Library	R
7.31	Map	Ordnance Survey map of 1879: Eldon Square, north-east corner: 1:500 series, Sheet Reading, XXXVII.3.15	R
7.32a b	Photographs	W.H. Fox Talbot, north-east corner of Eldon Square, c.1854: http://readingimages.epixtech.co.uk/loc/1210626.JPG , Reading Central Library Eldon Square, north-east corner, present-day: Rosemary Yallop	R
7.33a b, c	Photographs	Eldon Square, north side: Rosemary Yallop	
7.34a b	Drawing Photograph	Henry Briant: designs for 13 and 15 Eldon Square, 1835: Berkshire Record Office D/EX/1358/1/2 Nos. 13 and 15 Eldon Square: Rosemary Yallop	R
7.35	Map	Stokeville, Stoke-on-Trent, Staffs. Ordnance Survey 1890 County Series,	R

		1: 10,560	
7.36	Map	Stokeville, as built, Ordnance Survey 1878, 1:500: reproduced from Dobraszczyc	R
7.37a	Photographs	Stokeville, The Circus, looking north: Rosemary Yallop	R
b		Stokeville, The Circus, looking south: http://the-villas.com/images/uploaded/villas_postcard.jpg	
7.38a	Photograph	No. 7 The Villas: Rosemary Yallop	R
b	Plate	Charles Parker, <i>Villa Rustica</i> , Plate XI	R
c	Photograph	No.18 The Villas: IoE 384498 ©Donald Pittman	R
7.39a	Photographs	Nos 1 and 2 The Villas: Rosemary Yallop	R
b		Nos. 23 and 24 The Villas: Stoke-on-Trent City Council, <i>The Villas Conservation Area Appraisal</i>	
7.40	Blueprint	No. 14 The Villas, elevations: ©HMSO: <i>Stoke-on-Trent Historic Buildings Survey</i> , 1982	R
7.41	Photograph	No. 21 The Villas in 1984: Stoke-on-Trent City Council, <i>The Villas Conservation Area Appraisal</i>	R
7.42	Photograph	Interior of No.9 The Villas: author's collection	R
7.43	Plan	Ground plan of No. 14 The Villas: http://www.thepotteries.org/education/housing/villas.jpg	R
7.44	Plan	[See 6.65]	R
7.45	Photograph	Aerial photograph of the Villas: www.google.co.uk/maps/place/Stoke-on-Trent	R
7.46	Map	Newton Abbot, Devon Square and Courtenay Park. Ordnance Survey, 1878	R
7.47	Photograph	Newton Abbot, aerial photograph of Devon Square, 1932, ©Britain from Above: http://www.britainfromabove.org.uk/sites/all/lib/aerofilms-images/zoomify/england/EPW039820/TileGroup0/2-1-1.jpg	R
7.48	Photographs	Devon Square, south terrace: Rosemary Yallop	
7.49	Photograph	Devon Square, west side: Rosemary Yallop	
7.50	Photograph	Devon Square, north side: Rosemary Yallop	
7.51	Photograph	Newton Abbot: Courtenay Park, 1-3 Peamore Terrace: Rosemary Yallop	R
7.52	Photograph	Powderham Road: Rosemary Yallop	
7.53	Lithograph	Abbotsleigh House, Abbotskerswell, 1847: reproduced from Philip Carter, <i>Newton Abbot</i> , (Exeter, 2004), p. 81. Copyright holder not known.	R
7.54	Photograph	Richmond Park Road, Bristol: Rosemary Yallop	
7.55	Photograph	Tuscany House, Durdham Park, Bristol: Rosemary Yallop	
7.56	Map	Ordnance Survey map, 1880, Durdham Park, Bristol	R
7.57	Photograph	Chescombe Lodge, Durdham Park: http://family-maw.com/places/Chescombe%20Lodge,%20Durdham%20Park,%20Bristol,%20Gloucestershire,%20England.jpg	R
7.58	Photograph	Avonbank, Clifton Down: Rosemary Yallop	
7.59	Photograph	Vyvyan House, Clifton Park: Rosemary Yallop	
7.60	Photograph	Clifton Park Lodge: Rosemary Yallop	
7.61	Photograph	College Fields: Rosemary Yallop	
7.62	Photograph	64-66 Pembroke Road: Rosemary Yallop	
7.63	Photographs	Pembroke Road: Rosemary Yallop	
7.64a	Photographs	7-9 Whiteladies Road: Rosemary Yallop	
b		31-33 Whiteladies Road: Rosemary Yallop	
7.65	Photograph	153-57 Whiteladies Road: Rosemary Yallop	
7.66a	Photographs	Upper Belgrave Road: Rosemary Yallop	
b		Percival Road: Rosemary Yallop	
c		College Road: author's collection	
d		Oakfield Close, St Paul's Road: Rosemary Yallop	
7.67	Photograph	Cotham Brow: Rosemary Yallop	
7.68	Photograph	All Saints' Road: Rosemary Yallop	
8.1	Photograph	Riverside, New Jersey: https://4.bp.blogspot.com/-7AM5b1sKlr0/Vrvq-MTIMSI/AAAAAAAAACXM/yhbTjLeu9Ck/s400/burlington1.jpg	R
8.2	Illustration	Riverside, in Downing, <i>Treatise</i> , p. 389	R
8.3	Photograph	Prospect House, New Jersey: www.princeton.edu/prospecthouse/history.html	R

8.4	Photograph	Alverthorpe, Philadelphia: ©The Athenaeum of Philadelphia	R
8.5	Photograph	Fieldwood, New Jersey: https://etcweb.princeton.edu/campusgiffiles/41748.gif	R
8.6	Photograph	Ellarslie, New Jersey: www.ellarslie.org/about/history	R
8.7	Watercolour	Smillie Villa, New Jersey: Avery Architecture and Fine Arts Library, Columbia University Libraries, NYC, A.J. Davis Collection: NYDA 1955.001.00145-00152.	R
8.8a	Photograph	Blandwood, North Carolina: North Carolina State University, Special Collections, MC00583, ©Tim Buchman	R
b	Plans	Blandwood, north and west elevations: North Carolina State University, Special Collections, UA 110.41	R
8.9a	Watercolour	A.J. Davis, perspective of Wynyah Park, New Jersey, 1851: Carnegie Museum of Art CMA-92-128	R
b	Photograph	https://upload.wikimedia.org/wikipedia/commons/thumb/e/ed/TuscanVillaNR,NY.JPG/280px-TuscanVillaNR,NY.JPG	R
8.10a	Photograph	Edward King House, Newport, RI: www.edwardkinghouse.org	R
b	Illustration	Edward King House in Downing, <i>Country Residences</i> , fig. 143	R
8.11	Plate	William Ranlett, 'Italian villa', in <i>The Architect</i> , Designs XXII and XXIII	R
8.12	Plate and text	Samuel Sloan, 'Italian Villa', <i>Model Architect</i>	R
8.13	Plate and text	Charles Elliott, <i>Cottages and Cottage Life</i> , title page and plate facing	R
8.14	Watercolour	Gervase Wheeler, Design for an Italian Villa, c.1848 ©Historic New England, SN180725	R
8.15a	Illustrations	Downing, 'Villa in the Italian Style', <i>Cottage Residences</i> , Design VIII	R
b		George Wightwick, 'Anglo-Italian villa', <i>Palace of Architecture</i> , shown here in mirror-image [See 5.31]	R
8.16	Illustration	Notman, 'Tuscan style', in Downing, <i>Country Residences</i> , Design IX	R
8.17	Photograph	40 Kneesworth Street, Royston, Cambridgeshire, United Kingdom: IoE 161795 ©L.W. Smith	R
8.18	Illustration	Downing, 'Villa in the Italian Style, Bracketed', <i>Cottage Residences</i> , Design VI	R
8.19a	Watercolour	Davis, perspective, Grace Hill, Brooklyn, 1854: Metropolitan Museum of Art, New York, 24.66.67	R
b	Photograph	Grace Hill, Brooklyn: https://blankslatepages.s3.amazonaws.com/litchfield-villa-6b79a77180e9ec3a7ca351ebe54641a2-1400872350-litchfield-villa.jpg	R
8.20	Illustration	Ranlett, 'small cottage villa in the semi-Italian mode', <i>Architect</i> , Design XXXVI	R
8.21	Photograph	Glengarry, Kentucky: reproduced from Lancaster, 'Lewinski', fig.10	R
8.22a	Photograph	Woodland Terrace, Philadelphia: ©City of Philadelphia Dept. of Records, Historic Commission 504040-71862	R
b	Plate	Sloan, semi-detached 'Italian Residences', <i>Model Architect</i> , Vol. I, pl.18	R
8.23	Watercolour	Greenway, perspective of Government House, Sydney, 1820: www.sydneylivingmuseums.com.au	R
8.24	Photograph	Bligh Street, Sydney: ©National Library of Australia, no.5214732	R
8.25a	Photograph	Bungarribee, NSW, exterior view, reproduced from Broadbent, Plate 7.22	R
b	Plan	Bungarribee, NSW, re-constructed plan: reproduced from Broadbent, fig. 7.3	R
c	Photograph	Bungarribee, drawing room interior: reproduced from Broadbent, Plate 7.24	R
d	Drawing	W. Hardy Wilson, Bungarribee, 1921: National Library of Australia, PIC586 LOC1399	R
8.26	Drawing	Albion House, Sydney, 1820s, reproduced from Broadbent, colour plate 10	R
8.27	Drawing	W. Hardy Wilson, Newington, Paramatta River, NSW, 1921: ©National Library of Australia, PPIC537 LOC1350	R
8.28	Photographs	Highfield, Tasmania:	R
a		https://mahine2014.files.wordpress.com/2014/03/highfield20house-stanley-p8.jpg	R
b		https://upload.wikimedia.org/wikipedia/commons/thumb/c/c3/Highfield_stanley_tasmania.jpg/800px-Highfield_stanley_tasmania.jpg	R
8.29	Photograph	Ayers House, Adelaide: accessed at www.expedia.com	R
8.30	Photograph	Woolmers, Tasmania: http://3.bp.blogspot.com/-Ud7EDYOBPy8/U9jTfrpjLNI/AAAAAAAAAJg0/p2VOXNwRFJs/s1600/DSC09375.JPG	R
8.31	Photograph	Rosedale, Tasmania: http://www.circamorrisnunn.com.au/assets/rosedale01_heritage-rosedale_exterior1.jpg : National Library of Australia	R
8.32	Photograph	Bishopscourt, Melbourne:	R

		http://www.heia.com.au/photos/conf_2017/bishops court.png	
8.33a, b	Photographs	Saundridge, Cressy, Tasmania: National Trust of Australia, Tasmanian State Office Collection, TSO00017946 and TSO00018743.1	R
8.34	Photograph	Northbury, Tasmania: National Trust of Australia, Mercury Collection, TSO00017922	R
8.35a	Photograph	Westoe, Rangitikei, New Zealand: ©Heritage New Zealand, Helen McCracken, 2002	R
b	Illustration	[See 5.20]	R
c	Plan	Westoe, plans and elevations: Alexander Turnbull Library, National Library of New Zealand, Plans 80-2280	R
8.36a	Photograph	Collins Street, Annandale, Sydney: http://www.australianterrace.com/wp-content/uploads/2010/03/13-15_collins_street_annandale_sydney_new_south_wales1.jpg	R
b	Photograph	[See 7.10b]	R
9.1	Plate and text	Title page and 'Design for a pair of semi-detached villas- Italian style' with accompanying text, Blackburne, p. 34	R
9.2	Plate and text	'Italianized Gothic', Blackburne, p. 76	R
9.3	Illustration	[See 5.36]	R
9.4	Photograph	Westbourne Park Villas, west London: Rosemary Yallop	
9.5	Photograph	Upper Mount, The Vale, Southsea: IoE 475171 ©Glyn Edmunds	R
9.6	Photograph	Villa Lugano, Vane Hill, Torquay: author's collection	
9.7	Photograph	Villa La Gaeta, San Siro, Lake Como: https://irp-cdn.multiscreensite.com/afde8c67/dms3rep/multi/desktop/Villa_La_Gaeta-1300x558.dm.crop_0_288_1300_558_nDGH.jpg	R
9.8	Photograph	Via Serchio, Quartiere Coppedè, 00198 Rome: Rosemary Yallop	
9.9	Photograph	Broad Terraces, Knutsford: http://www.zoopla.co.uk/property-history/32863274?image=-1	R
9.10	Photograph	Bank Farm, Oldcastle, Malpas, Cheshire: ©Country Life	R
9.11	Photograph	Stowe Court, Bucks: ©David Coles Architects	R
9.12	Computer-generated image	Little Marsh House, Hampshire: http://www.benpentreath.com/wp-content/uploads/2015/07/1.villa-south-coast-uk-ben-pentreath-architecture-x1.jpg	R
9.13	Photograph	4 Monmouth Terrace, Deal, New Jersey: http://acdn.architizer.com/thumbnails-PRODUCTION/ed/c6/edc6f25e61958fa875c43218d2eb5717.jpg ©Peter Aaron	R
9.14a	Photograph	Sunnyhill, Prestbury, Cheshire: http://media.rightmove.co.uk/dir/49k/48707/30806988/48707_WIS140060_IMG_00_0002_max_656x437.JPG	R
b	Photograph	Green Meadows, Hale, Cheshire http://bowdonhomes.co.uk/wp-content/gallery/green-meadow/green-meadows-eternal-1.jpg	R
9.15a	Photograph	Lake Mendota boathouse, Wisconsin: http://www.flwright.org/ckfinder/userfiles/images/Mendota472x300.jpg	R
b	Plate	[see 5.10]	R
9.16	Watercolour	Frank Lloyd Wright, perspective of a house for Robert Eckart, 1900: reproduced from Twombly, Fig. 3.5 (upper image)	R
9.17a	Photograph	Frederick C. Robie Residence, Chicago: https://upload.wikimedia.org/wikipedia/commons/1/19/Frederick_C._Robie_House.JPG	R
b	Plate	[see 5.8]	R
c	Photograph	Ferdinand and Emily Tomek Residence, Riverside: http://www.mcnees.org/architecture/prairie_arch_images/flw_ff_tomek_hse_nuttail_riveride_east-1_remc.jpg	R
9.18a	Photograph	Joseph and Helen Husser Residence, Chicago: reproduced from Storrer, p. 47	R
b	Photograph	[See 6.10]	R
9.19a	Drawing	Frank Lloyd Wright, the Dana-Thomas House, south and east elevations of main house and west wing, 1902: https://upload.wikimedia.org/wikipedia/commons/thumb/1/1c/Dana_Elevation.jpg/1024px-Dana_Elevation.jpg	R
b	Photograph	[see 6.47a]	R

ILLUSTRATIONS

Introduction

[Image redacted for copyright reasons]

1.1 John Nash: Cronkhill, Shropshire



1.2 John Nash: Sandridge Park, Devon

[Image redacted for copyright reasons]

1.3 John Nash: Lissan Rectory, Co. Tyrone

Chapter 1

[Images redacted for copyright reasons]

- 1.4 James Peacocke, *Nutshells*, title page and Plates II and V

[Images redacted for copyright reasons]

- 1.5 Edward Gyfford, *Designs*, Plates XIX and XX

[Images redacted for copyright reasons]

- 1.6 Richard Elsam, *Rural Architecture*, Plate 4; 'Three small houses ... whose exterior appearance are intended to convey the idea of one entire Villa'

[Image redacted for copyright reasons]

- 1.7 J.B. Papworth, *Rural Residences*, villa designs XV and XVI

[Image redacted for copyright reasons]

- 1.8 John James Chalon, *The garden front of Mr. Robert Vernon's house at Twickenham*, c.1840

[Image redacted for copyright reasons]

- 1.9 Catford Hill House, Lewisham, c.1835

[Page 16 left blank intentionally]

[Page 17 left blank intentionally]

Chapter 2

[Image redacted for copyright reasons]

2.1 Robert Adam: *Sketch for Culzean Castle*, 1770s. Soane Coll. SM Adam Volume 37/9

[Image redacted for copyright reasons]

2.2 Richard Payne Knight: Downton Castle, Herefordshire

[Image redacted for copyright reasons]

2.3 Claude Lorrain: *The Enchanted Castle*, c.1664. NG6471

[Image redacted for copyright reasons]

2.4a-d Robert Lugar, *Architectural Sketches*

a plate XIX 'in the fancy style'; **b** plate VIII 'ornamented cottage with ruins'

c, d Plates XXV and XXVI: 'Gothic house of a fancy, broken or varied character for a gentleman's residence':
plan and elevation

[Image redacted for copyright reasons]

2.5 John Nash: Longner Hall, Shropshire, from 1803

[Image redacted for copyright reasons]

2.6 John Nash for Uvedale Price: Castle House, Aberystwyth, depicted c.1830

[Image redacted for copyright reasons]

2.7 John Nash: Luscombe Castle, Devon

[Image redacted for copyright reasons]

2.8a and **b** John Nash: Killymoon, Co. Tyrone, and Caerhayes, Cornwall

[Page 19 left blank intentionally]

Chapter 3

[Image redacted for copyright reasons]

3.1 Bartholomeus Breenbergh, *View of Tivoli*, c.1620, Metropolitan Museum of Art, New York MMA 63.2

[Image redacted for copyright reasons]

3.2 Nicolaes Berchem, *Italian landscape with figures and animals: a village on a mountain plateau*, 1655, Royal Collection Trust, RCIN 404818

[Image redacted for copyright reasons]

3.3 Claude-Joseph Vernet, *Cascades at Tivoli*, 1740s. Petit Palais, Paris, PDUT00884

[Image redacted for copyright reasons]

3.4 Claude Lorrain, *Landscape near Rome with a view of the Ponte Molle*, 1645, Birmingham Museum and Art Gallery, Acc. 1955P111

[Image redacted for copyright reasons]

3.5 Joseph Gandy, *View near Campitello in the Italian Alps*, c.1795. Private collection.

[Images redacted for copyright reasons]

3.6 *Ponte Molle* porcelain designs by Spode and Ridgway manufactories, Staffordshire, c.1810-20

[Image redacted for copyright reasons]

3.7 Schinkel, 'View of a peasant house in Italy', 1804

[Image redacted for copyright reasons]

3.8 Jean Durand, *Précis*, Book I, part 2, pl. 19

[Image redacted for copyright reasons]

3.9 François-Léonard Seheult, *Recueil*, 'A la villa Barberini à Rome', pl. 10

[Image redacted for copyright reasons]

3.10 Ville de Clisson: Maison du Jardinier

[Image redacted for copyright reasons]

3.11 Karl Friedrich Schinkel: Potsdam: Charlottenhof, the Gardener's House

[Images redacted for copyright reasons]

3.12a-c Casina Giustiniani, Parco di Villa Borghese, Rome:

a Present-day **b** Watercolour by Arthur Robinson, 1843 **c** Charles Parker, *Villa Rustica*, plate III

[Image redacted for copyright reasons]

3.13 Bernardo Buontalenti, Villa Poggiofrancoli, Rignano: garden façade, c.1580

[Image redacted for copyright reasons]

3.14 Fra Bartolomeo, *Farm on the slope of a hill*, c.1508, Cleveland Museum of Art, 57.498.

[Image redacted for copyright reasons]

3.15a Ferdinando Morozzi (attrib.), Podere Via del Porto, Capannone, before 1779 **b** present-day



3.16 Tuscan 'Leopoldinas'

[Images redacted for copyright reasons]

3.17a-c Rural buildings from Tuscany: vernacular **3.17d** Tuscan 'su progetto'

[Images redacted for copyright reasons]

3.18a A Tuscan *casa colonica*, Panzano **b** J.C. Loudon, 'Dwelling for a man and his wife'

[Image redacted for copyright reasons]

3.19 Rural buildings from the Campagna

[Page 23 left blank intentionally]

[Page 24 left blank intentionally]

Chapter 4

[Image redacted for copyright reasons]

4.1 Cronkhill, Shropshire

[Image redacted for copyright reasons]

4.2 George Stanley Repton, perspective design for Cronkhill, c.1802

[Image redacted for copyright reasons]

4.3 George Steuart: Attingham Park, enlarged and altered 1783-5



4.4 Junction of new villa and old farmhouse to left

[Image redacted for copyright reasons]

4.5 South elevation showing altered roof pitch

[Image redacted for copyright reasons]

4.6 Eastern elevation

[Image redacted for copyright reasons]

4.7 The villa 'box'

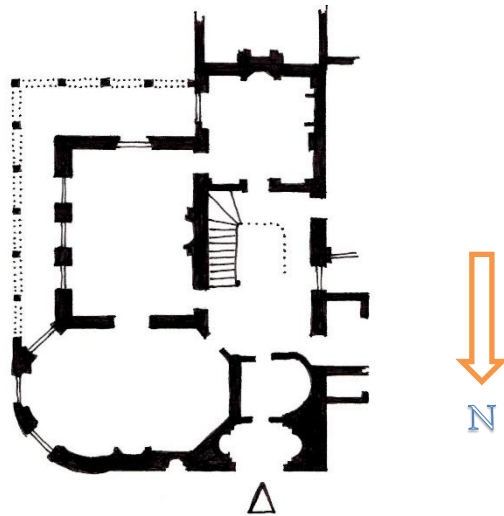
[Image redacted for copyright reasons]

4.8 Cronkhill: view eastwards from loggia to the Wrekin



4.9 Cronkhill: entrance in north front

4.10a and b Loggia detail



4.11 Cronkhill: plan of new villa wing: service wing continues to south

[Image redacted for copyright reasons]

4.12 Cronkhill: entrance hall

[Image redacted for copyright reasons]

4.13 Staircase with door to square tower room beyond



4.14 Cronkhill: rear elevation



4.15 Sandridge Park, Devon, in 2012

[Image redacted for copyright reasons]

4.16 T. H. Shepherd: Sandridge Park, engraving, 1829. That the round tower is not visible here is optically correct.

[Images redacted for copyright reasons]

4.17a and b Two watercolours of Sandridge Park, assumed to be unexecuted designs; no date or signature; possibly one was exhibited by Nash at the Royal Academy in 1805. Private collection

[Image redacted for copyright reasons]

4.18 John Adey Repton: 'Conservatory similar to that attached to the house at Sandridge Park, Devon', c.1810

[Images redacted for copyright reasons]

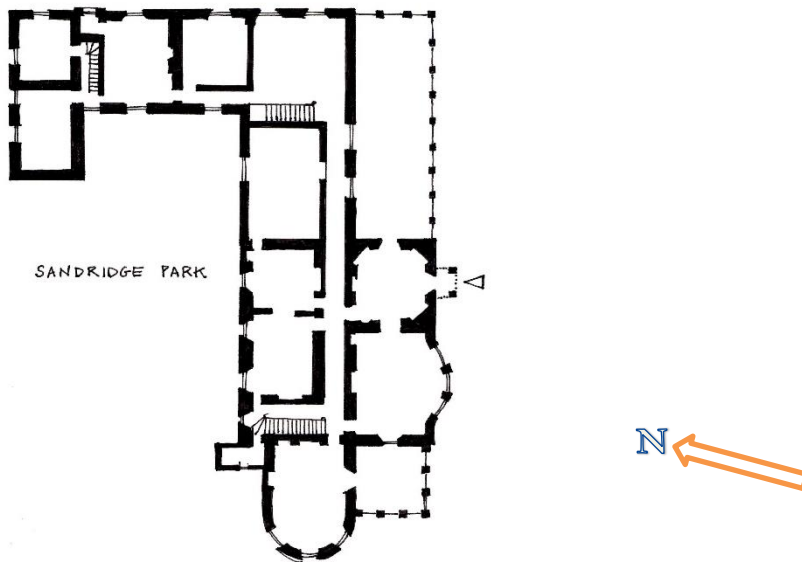
4.19 George Stanley Repton, Designs for a greenhouse, between 1805 and 1811, inscribed as for Albury Park, Surrey, but not executed there

[Image redacted for copyright reasons]

4.20a and b Sandridge Park front elevation: photographs by Sir John Summerson, 1933

[Image redacted for copyright reasons]

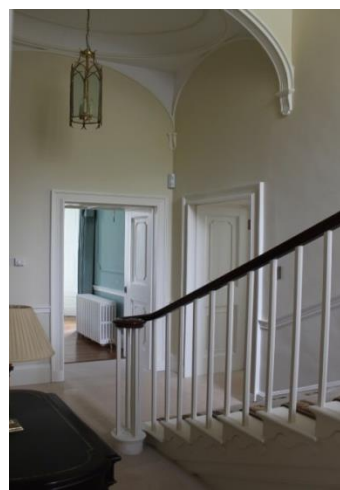
4.20c Photograph from the 1950s after demolition of conservatory and part of service wing



4.21 Sandridge Park: reconstructed plan



4.22 Octagonal room at foot of square tower



4.23 Staircase leading to drawing room



4.24 View from west through cutting

[Image redacted for copyright reasons]

4.25 Lissan Rectory, early twentieth century

[Image redacted for copyright reasons]

4.26 and b George Stanley Repton: Lissan Rectory, entrance and garden elevations

[Image redacted for copyright reasons]

4.27 Lissan Rectory, watercolour perspectives, not dated or signed. Private collection

[Image redacted for copyright reasons]

4.28a Lissan Rectory: loggia and detailing



4.28b Loggia and detailing

[Image redacted for copyright reasons]

4.29 Reconstructed plan, 20th century



4.30 Lissan Rectory: Staircase and drawing room

[Images redacted for copyright reasons]

4.31a and b Lissan Rectory: present-day

[Image redacted for copyright reasons]

4.32 Richard Earlom, publisher, 'Landscape near Rome with a view of the Ponte Molle', engraved by John Boydell after Claude, London 1777

[Image redacted for copyright reasons]

4.33a Claude Lorrain: 'Torre Lazzaroni', ink and wash, 1650-60. Ashmolean Museum WA 1855.57

[Image redacted for copyright reasons]

4.33b Claude Lorrain: 'Tomb of Cecilia Metella', ink and wash, 1669. Ashmolean Museum WA 1855.55

[Image redacted for copyright reasons]

4.34a Richard Wilson, *Holt Bridge on the River Dee*, 1762

[Image redacted for copyright reasons]

4.34b Claude Lorrain, *Ponte Molle* (larger version at **3.4**)

[Image redacted for copyright reasons]

4.35 Simon Denis, *Sunset, Rome*, 1790: Metropolitan Museum of Art, New York Coll.2009.400.43

[Images redacted for copyright reasons]

4.36a Francis Towne: 'Temple of Vesta', pen and wash, 1781. British Museum Nn.1.18 (detail)

b Pietro Santi Bartoli: 'Scipio's Tomb', engraving, *Gli Antichi Sepolcri*. 1697.

c Sir John Soane: 'Design for a prospect tower for Ossington Hall', watercolour, 1786, Soane Coll. 65/3/1 (detail)

[Image redacted for copyright reasons]

4.37 Sandlin House, Leigh Sinton, Worcestershire: after late eighteenth-century alterations and additions

[Image redacted for copyright reasons]

4.38 John Plaw: Round House, Havering-atte-Bower, 1792

[Image redacted for copyright reasons]

4.39 Peacocke, *Nutsbells*, Plates III and IX

[Image redacted for copyright reasons]

4.40 Edward Gyfford, *Designs*, 1806-7, plates 2, 7, 8

[Images redacted for copyright reasons]

4.41 John Nash: Scheme for the Park Village, Regent's Park, 1823, and vignette

[Image redacted for copyright reasons]

4.42 John Nash and Sir James Pennethorne: 12 Park Village West

[Image redacted for copyright reasons]

4.43 A.C. Pugin: Atcham cottage, c.1800

[Image redacted for copyright reasons]

4.44 George Stanley Repton (attrib.): Panson Cottage, c.1802. Dumbarton Oaks Collection, Washington D.C

[Image redacted for copyright reasons]

4.45 George Stanley Repton: Designs for a farmhouse, before 1805

[Image redacted for copyright reasons]

4.46 George Stanley Repton or John Adey Repton: untitled, no date

[Page 33 left blank intentionally]

[Page 34 left blank intentionally]

[Page 35 left blank intentionally]

[Page 36 left blank intentionally]

[Page 37 left blank intentionally]

Chapter 5

[Image redacted for copyright reasons]

5.1 James Randall, *Architectural Designs*, 'Casino in the Grecian style'

[Image redacted for copyright reasons]

5.2 Edward Edwards, *Treatise*, Plate III

[Images redacted for copyright reasons]

5.3a Joseph Gandy: *Designs*, Plate XXI b *Rural Architect*, 'Dwelling for a farmer, or Inn', Plate XVII

c *Rural Architect*, 'Two dwellings in the Italian style', Plate XXXIII

d *Rural Architect*, 'Picturesque dwelling on the sea coast for the Retirement of a naval officer', Plate XXXII

[Images redacted for copyright reasons]

5.4a and b Robert Lugar, *Architectural Sketches*, 'Italian Villa', Plates XXVII and XXVIII

c Robert Lugar: Dunstall Priory

[Image redacted for copyright reasons]

5.5 Lugar, *Country Gentleman's Architect*, Farmhouse design, plate 6

[Images redacted for copyright reasons]

5.6a and b Edmund Aikin, *Designs*: 'Villa for a romantic situation', Plates XIV and XV

c and d Villa, front and rear elevations, Plates VI and VII

[Image redacted for copyright reasons]

5.7 J.B. Papworth: 'Villa designed as the Residence of an Artist'

[Image redacted for copyright reasons]

5.8 J.B. Papworth: 'Cottage Orné'

[Image redacted for copyright reasons]

5.9a Rev. William Gunn, *Inquiry*, Plate 1 **b** J.C. Loudon, *Encyclopedia*, Figs. 1694 and 1695

[Image redacted for copyright reasons]

T.F. Hunt, *Architettura Campestre*:

5.10 'Prospect tower, garden-seat etc' **5.11** 'Small villa' **5.12** 'Gate-lodge': compare the *casa colonica* at **3.18a**

[Image redacted for copyright reasons]

5.13 P.F. Robinson, *Ornamental Villas* 'Residence in the modern Italian style', Design VIII

[Image redacted for copyright reasons]

5.14 P.F. Robinson, *Ornamental Villas* **a** and **b** 'For a residence in the style of a building in Tuscany'

[Images redacted for copyright reasons]

5.15a and **b** Robinson, *Designs for Farm Buildings* 'Italian and Farm Yard' and 'Italian Farm House', pls. 30, 38

[Image redacted for copyright reasons]

5.16 Gilbert Laing Meason, *Landscape Architecture*

a Plate 1 'from Titian'

b title page

c Plate 4 'from Claude'

[Image redacted for copyright reasons]

5.17 Edward Trendall, *Original Designs*, 'Italian villa', plate 19

[Image redacted for copyright reasons]

5.18 Francis Goodwin, *Domestic Architecture*, Vol. I: 'Italian Villa', Design 13 **a** Entrance front **b** Garden front

[Image redacted for copyright reasons]

5.19 Francis Goodwin, *Domestic Architecture*, Vol. II: 'Hunting lodge or villa in the Italian style', Design 13

[Image redacted for copyright reasons]

5.20 E.H. Browne: Design for an Italian villa (1834)

[Image redacted for copyright reasons]

5.21 Francis Goodwin, *Domestic Architecture*, Vol. II, 'Modern Anglo-Italian villa', Design 1

[Images redacted for copyright reasons]

5.22a-c Charles Parker, *Villa Rustica* pls. I, II, III, 'Outline taken from Raphael's villa, Borghese gardens'

5.22d-f pls. IV, V, VI: Design based on the 'Residence of a husbandman between Florence and Siena'

5.22g-i pls. IX, X, XI: 'Villa, arranged from a Bailiff's dwelling'

5.22j and k pls. XXXIII, XXXIV: 'Gate lodge based on an Apennine cottage'

[Image redacted for copyright reasons]

5.23 pl. VII: Roof tiles

[Image redacted for copyright reasons]

5.24 John Claudius Loudon, *Encyclopedia*: 'Anglo-Italian villa' fig.1464

[Image redacted for copyright reasons]

5.25 Loudon, *Encyclopedia*: 'Italian villa on a considerable scale' fig.1658

[Image redacted for copyright reasons]

5.26 Loudon, *Encyclopedia*: 'small villa or parsonage in the Italian style' fig.1497 (Design IX)

[Image redacted for copyright reasons]

5.27 Lamb in Loudon, *Encyclopedia Supplement*, 'Small villa in the modern style' fig.2150

[Image redacted for copyright reasons]

5.28 Loudon, *Encyclopedia*: paras.138-42 'Cottage for a couple in the Italian style'

[Image redacted for copyright reasons]

5.29 Loudon, *Suburban Gardener*: 'Double detached house in the Italian style' fig.119

[Image redacted for copyright reasons]

5.30 Lamb in Loudon, *Suburban Gardener*: 'Suburban Villa in the Italian style', fig. 188

[Image redacted for copyright reasons]

5.31 George Wightwick, *Palace*: 'Anglo-Italian Villa'

[Image redacted for copyright reasons]

5.32 Richard Brown, *Domestic Architecture* 'Anglo-Italian Villa'

[Image redacted for copyright reasons]

5.33a and **b** Edward Tarbuck, *Builder's Practical Director*: **a** 'Suburban Villa' **b** 'Detached villa'

[Images redacted for copyright reasons]

5.34a-d E.L. Blackburne, *Suburban and Rural Architecture*:

a 'Pair of villas, Anglo-Italian'

b Design 35 'A detached villa –Rustic Italian'

c 'A pair of seven-roomed villas, semi-detached – Italian', Design 15

d Design 29

e 'Semi-detached villas, Italian' Design 27

[Images redacted for copyright reasons]

5.35a and **b** Thomas Morris: *A House for the Suburbs*, 'Glebe House' and 'Semi-detached houses'

[Image redacted for copyright reasons]

5.36 Robert Kerr, *Gentleman's House*: 'Rural-Italian Style', p. 356

[Page 42 left blank intentionally]

[Page 43 left blank intentionally]

[Page 44 left blank intentionally]

[Page 45 left blank intentionally]

[Page 46 left blank intentionally]

Chapter 6

[Images redacted for copyright reasons]

6.1a T.F. Hunt: *Architettura Campestre* Pl. IX: 'Prospect tower, garden-seat etc' [also at **5.10**]

6.1b Farley Lane Lodge, Alton Towers, Staffordshire IoE 275133 ©Donald Pittman

[Images redacted for copyright reasons]

6.2a Joseph Paxton and John Robertson: Barbrook, Edensor for Paxton (demolished)

6.2b Robertson: Park Lodge, Baslow, for the Chatsworth Estate

[Image redacted for copyright reasons]

6.3 Robert Lugar: Gold Hill, later Dunstall Priory, Kent: Garden elevation

[Images redacted for copyright reasons]

6.4a Dunstall Priory: entrance front ©John Topham

b Lugar: *Architectural Sketches*: 'Italian Villa', pl. XXVIII

[Image redacted for copyright reasons]

6.5 Lugar: Wood Hall, Yorkshire

[Image redacted for copyright reasons]

6.6 Lugar (attrib.): Villa at Herne Hill

[Image redacted for copyright reasons]

6.7 J.M.W. Turner: Sandycombe Lodge, c.1814

[Images redacted for copyright reasons]

6.8a-c Turner, Sandycombe Lodge designs: **a** D08985

b D08065

c D08232 (detail)

[Image redacted for copyright reasons]

6.9 L.W. Lloyd: Bute Lodge, Twickenham

[Image redacted for copyright reasons]

6.10 George Smith: Brooklands, Blackheath

[Images redacted for copyright reasons]

6.11 Joseph Kay: The Cupola, Hastings

[Images redacted for copyright reasons]

6.12 Lloyd: Caen Lodge, Twickenham, in the 1830s

[Images redacted for copyright reasons]

6.13 Bromley Hill, painted by John Chessell Buckler, c.1815

[Images redacted for copyright reasons]

6.14 Bromley Hill c.1900

[Image redacted for copyright reasons]

6.15 Tue Brook Villa, Liverpool in 1838

[Images redacted for copyright reasons]

6.16a John Hargrave: proposal for Fort Stewart. Entrance front (c.1823) **6.16b** garden elevation

[Image redacted for copyright reasons]

6.17 Thomas Hope and William Atkinson: The Deepdene, Surrey: watercolour by William Bartlett

[Image redacted for copyright reasons]

6.18 North-west front engraved by Neale from *An Account of The Deepdene*

[Image redacted for copyright reasons]

6.19 The Deepdene: Middle Lodge

[Images redacted for copyright reasons]

6.20a and **b** Alexander Roos (attrib.): alternative designs for Gardener's house, The Deepdene (c.1836-41)

[Image redacted for copyright reasons]

6.21 The Deepdene: Dairy and domestic offices with spirelet. Watercolour by William Bartlett

[Image redacted for copyright reasons]

6.22 Thomas Hope: design for a villa, c.1801 (detail)

[Image redacted for copyright reasons]

6.23 The Deepdene after re-modelling by Henry Hope and Alexander Roos, photographed in 1919

[Image redacted for copyright reasons]

6.24 Alexander Beresford Hope, as re-drawn: Errwood 'as not completed'

[Image redacted for copyright reasons]

6.25 Alexander Beresford Hope: Errwood Hall, Derbyshire

[Image redacted for copyright reasons]

6.26 Proposal for Victoria Park, later Queens Park, Brighton: lithograph by Thomas Allom after a watercolour by Sir Charles Barry

[Images redacted for copyright reasons]

6.27a and **b** Barry: Attree Villa, Queen's Park, Brighton

[Images redacted for copyright reasons]

6.28a, b, c Barry: Italianate villa designs for Queen's Park

6.28d, e, f Barry: alternative designs for the Attree Villa

[Images redacted for copyright reasons]

6.29a and **b** Barry: Walton House, later Mount Felix (1835-9)

[Image redacted for copyright reasons]

6.30a Barry: Three Italianate cottages for Trentham Village, c.1840

[Image redacted for copyright reasons]

6.30b Barry: Police house, Trentham, c.1840

[Image redacted for copyright reasons]

6.31 Thomas Cubitt and The Prince Albert: Osborne House

[Image redacted for copyright reasons]

6.32a Prince of Wales Lodge, Osborne

[Image redacted for copyright reasons]

6.32b The Landing House, Osborne

[Images redacted for copyright reasons]

6.33a Roos: perspective of Coddendam Lodge, Shrubland Park, Suffolk

6.33b Charles Parker: *Villa Rustica*, Design for a fishing lodge

6.33c Roos: Coddendam Lodge (c.1845)

[Images redacted for copyright reasons]

6.34a - c Roos: alternative designs for Ipswich lodge, Shrubland Park

d Ipswich Lodge as built

e Needham Lodge, Shrubland Park

[Image redacted for copyright reasons]

6.35 Anthony Salvin: Burwarton Hall, Shropshire

[Image redacted for copyright reasons]

6.36 Salvin: double house for William Nesfield and himself, from Downing, *Architecture of Country Houses* (1850), reproduced from Loudon, *Gardener's Magazine*, Vol.6, 1839

[Image redacted for copyright reasons]

6.37 Sir Jeffry Wyattville: Italian Lodge, Edensor

[Images redacted for copyright reasons]

6.38a William Donthorn: Great Moulton Rectory

6.38b Entrance front

[Image redacted for copyright reasons]

6.39 Donthorn: Stanground Manor, Cambridgeshire. Destroyed by fire 1889.

[Images redacted for copyright reasons]

6.40a Samuel Daukes: Abberley Hall, Worcs., as rebuilt in 1845 **b** Stable block

[Image redacted for copyright reasons]

6.41 Daukes: Bricklehampton Hall, Worcs.

[Image redacted for copyright reasons]

6.42 James Medland: St Tewdric's, Chepstow

[Image redacted for copyright reasons]

6.43 Thomas Flockton: High Hazels, Sheffield

[Image redacted for copyright reasons]

6.44 Ockham Park, Surrey (1830)

[Image redacted for copyright reasons]

6.45 Ashley Combe, Somerset (from 1835)

[Images redacted for copyright reasons]

6.46a and b William Playfair: Belmont, Edinburgh (1828)

[Image redacted for copyright reasons]

6.47a Playfair: Dunphail, Morayshire (1829)

[Image redacted for copyright reasons]

6.47b Dunphail: Coll-13/32, 1579

[Images redacted for copyright reasons]

6.48a and b Playfair: Drumbanagher, Co. Armagh (demolished) Coll.13/36, 1770

[Image redacted for copyright reasons]

6.49 Playfair: Dalcrue Farmhouse (1832) Coll.13/42, 2549

[Image redacted for copyright reasons]

6.50 Duff: unexecuted design for Italianate additions to Donard Lodge, Co. Down, on right-hand of elevation (mid-1830s)

[Image redacted for copyright reasons]

6.51 Simpson: Haddo House, Inverkeithney (1836)

[Image redacted for copyright reasons]

6.52 Simpson: Thainstone House, Aberdeenshire (1840)

[Image redacted copyright for reasons]

6.53a Simpson: Linton House, Sauchen, Aberdeenshire (1835)

[Image redacted for copyright reasons]

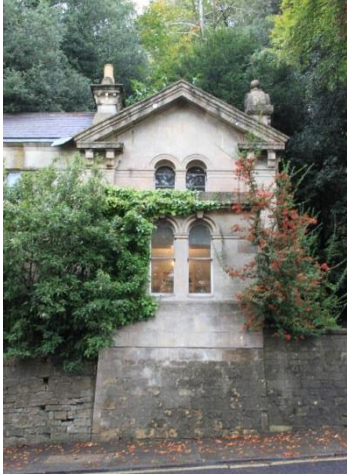
6.53b G.S. Repton, design for a farmhouse (n.d.)

[Image redacted for copyright reasons]

6.54 Thomson: Craig Ailey, Clydeside (1850)

[Image redacted for copyright reasons]

6.55a Goodridge: Montebello, now Bathwick Grange, Bath (1829)



6.55b Lodge to Montebello

[Image redacted for copyright reasons]

6.55c Montebello campanile

[Image redacted for copyright reasons]

6.56 Goodridge: Casa Bianca/La Casetta, Bath (1849)



6.57 Goodridge: Fiesole, Bath (1846-8) a Garden elevation b Entrance front



6.58a Davis: Oakwood, formerly Smallcombe Grove (c.1833) from north **b** detail of south elevation

[Image redacted for copyright reasons]

6.59 Davis: Marston Bigot Rectory, Somerset (1836)



6.60 Davis: Barcombe, Devon (1838)

[Image redacted for copyright reasons]

6.61 Davis or Goodridge: Aqueduct Hotel, Claverton (1836)

[Image redacted for copyright reasons]

6.62 Wilson: Wadbury, Mells (1838)

[Image redacted for copyright reasons]

6.63 Wilson: Glen Avon, Bath, for himself (1858)

[Images redacted for copyright reasons]

6.64a John Harper: Design for a common dwelling house in the Italian style

b Harper: Design for a cottage in the Italian style

c Harper: design for a villa in the Italian style

d Harper : design for a villa in the Italian style: rear elevation

e Harper: Design for a gamekeeper's lodge in the Italian style

f Harper: Perspective of an Italianate villa in a landscape

[Image redacted for copyright reasons]

6.65 Thomas Trubshaw: Design for a lodge (1830s) RIBA SD125/3 (5)

[Images redacted for copyright reasons]

6.66a and **b** George Wightwick: Thornhill, near Plymouth, for Charles Whiteford (1835)

6.66c Wightwick (attrib.): Ford Park, Plymouth (1850s)



6.67 Gribble: Bishopstowe House, Torquay (1841)

[Image redacted for copyright reasons]

6.68 Reed: Cowley House, St Helens (1847-50)

[Image redacted for copyright reasons]

6.69 Reed: Halton Grange, Runcorn (1853-6)

[Image redacted for copyright reasons]

6.70 Reed: Underscar Manor, Keswick (1856-63)

[Image redacted for copyright reasons]

6.71 Penson: Pant-glas, Carmarthen (1853-5)

[Image redacted for copyright reasons]

6.72 Penson: Nanteos Lodge, Ceredigion (1857)

[Image redacted for copyright reasons]

6.73 Towerhurst, Leigh Woods, Bristol (after 1870)

[Image redacted for copyright reasons]

6.74 Heiton: Seggie House, St Andrews (c.1860)

[Image redacted for copyright reasons]

6.75 Alexander Thomson: Holmwood, Glasgow (1857)

[Image redacted for copyright reasons]

6.76a Thomson: Craig Ailey, Clydeside (1850)

[Image redacted for copyright reasons]

b Thomson: Craig Ailey Villa, from Blackie, plate XIX

[Image redacted for copyright reasons]

6.77 Thomson: The Knowe (c.1853)

[Image redacted for copyright reasons]

6.78 Thomson: Tor House, High Craigmore (c.1856)

[Image redacted for copyright reasons]

6.79 Thomson: Arran View, Airdrie (1868)

[Image redacted for copyright reasons]

6.80 Papworth: *Villa for the residence of an Artist*

[Image redacted for copyright reasons]

6.81 John Gordon: Oakleigh Villa, Loch Long (1863) from Blackie, plate VI

[Page 58 left blank intentionally]

[Page 59 left blank intentionally]

[Page 60 left blank intentionally]

[Page 61 left blank intentionally]

[Page 62 left blank intentionally]

[Page 63 left blank intentionally]

[Page 64 left blank intentionally]

[Page 65 left blank intentionally]

[Page 66 left blank intentionally]

Chapter 7

[Image redacted for copyright reasons]

7.1a High Hazels, Sheffield



b The Villas, Stoke-on-Trent

[Image redacted for copyright reasons]

c The Cedars, Henwick Road, Worcester

[Image redacted for copyright reasons]

7.2 Calverley Park, Tunbridge Wells, c.1863

[Image redacted for copyright reasons]

7.3 Britton, *Sketches of Tunbridge Wells*, plate 3

[Image redacted for copyright reasons]

7.4a 18 Calverley Park, rear elevation

[Image redacted for copyright reasons]

7.4b Lugar, *Architectural Sketches*, 'Italian Villa'

[Image redacted for copyright reasons]

7.4c 23 Calverley Park

[Image redacted for copyright reasons]

7.4d Keston Lodge, Calverley Park

[Image redacted for copyright reasons]

7.5 Burton: Blackhurst, Kent, 1836-38, from Greenwood's *Epitome*, 1838

[Images redacted for copyright reasons]

7.6a and **b** Burton: Haydon Hill, Herts, (1841-3)

[Images redacted for copyright reasons]

7.7a and **b** Burton: Baston Lodge and Clone House, Maze Hill, Hastings-St. Leonards c.1840

[Image redacted for copyright reasons]

7.8 Henry Kendall: perspective design for Rosherville, 1837

[Image redacted for copyright reasons]

7.9 14-16 Curzon Park North, Chester (c.1847)

[Images redacted for copyright reasons]

7.10a and **b** Benjamin Ferrey: Nos. 1 and 2 Westover Villas, Bournemouth (demolished)

[Image redacted for copyright reasons]

7.11 Ferrey: Proposed scheme for Bournemouth, 1836. Westover Villas is in the centre



7.12a 19 and 21 Eldon Square Reading

[Images redacted for copyright reasons]

b Rowson Street, New Brighton, Wallasey

c The Park, Ealing



d Talbot Road, Notting Hill, London

[Images redacted for copyright reasons]

7.13a Clifton Hill, Brighton

b 12-14 Fonnereau Road Ipswich



c Lansdowne Crescent, west London



7.14a Stanley Gardens, Ladbroke Estate, London



b Pembroke Road, Bristol

[Images redacted for copyright reasons]

7.15a and **b** Lansdown Court, Cheltenham

[Image redacted for copyright reasons]

7.16 Amon Henry Wilds, Park Crescent, Brighton



7.17a and **b** Henry Bassett: Gloucester Crescent, London

[Images redacted for copyright reasons]

7.18a and **b** Sandown Terrace, Chester

[Image redacted for copyright reasons]

7.19a and **b** Lypiatt Terrace, Cheltenham

[Images redacted for copyright reasons]

7.20 Daukes (attrib.): Cornerways, Cheltenham (1839-50)

7.21 York Terrace, Cheltenham (1848-53)

[Image redacted for copyright reasons]

7.22 The Ladbroke Estate, c.1921 © Britain from above

[Image redacted for copyright reasons]

7.23 Plan for part of the Ladbroke Estate, c.1855 ©Corporation of London



7.24a and b Variety in Lansdowne Crescent, Ladbroke Estate, c.1840s



7.25a Stanley Gardens, Ladbroke Estate

b Campanile, Stanley Crescent



7.26 Lansdowne Road, Ladbrooke Estate



7.27 Kensington Park Terrace North



7.28 Tor Gardens, Pitt Estate, Kensington



7.29 Westbourne Park Villas, Bayswater, west London

[Image redacted for copyright reasons]

7.30 Eldon Square, Reading, c.1850: west side looking north

[Image redacted for copyright reasons]

7.31 Ordnance Survey map of 1879: Eldon Square, north-east corner

[Image redacted for copyright reasons]

7.32a Eldon Square, north-east corner photographed by Fox-Talbot c.1845



7.32b present-day



7.33a and b Eldon Square, north side: stone rusticity and picturesque variety (1837-40)



7.33c 11 Eldon Square, detached

[Image redacted for copyright reasons]

7.34a Henry Briant, design for 13-15 Eldon Square



7.34b Henry Briant: 13-15 Eldon Square, semi-detached

[Image redacted for copyright reasons]

7.35 Stokeville, Stoke-on Trent, Staffordshire. Ordnance Survey 1890 County Series, 1: 10,560

[Image redacted for copyright reasons]

7.36 Stokeville, as built: Ordnance Survey 1878, scale 1:500; house numbers have been added



7.37a the circus, looking north

[Image redacted for copyright reasons]

b looking south, downhill



7.38a No.7

[Images redacted for copyright reasons]

b Parker: *Villa Rustica*, plate

c No.18 Donald Pittman IoE



7.39a Nos. 1 and 2

[Image redacted for copyright reasons]

b Nos. 23 and 24

[Image redacted for copyright reasons]

7.40 No. 14 The Villas ©HMSO: Stoke-on-Trent Historic Buildings Survey, 1982

[Image redacted for copyright reasons]

7.41 No. 21 in 1984

[Image redacted for copyright reasons]

7.42 Entrance hall, No. 9

[Image redacted for copyright reasons]

7.43 Ground floor plan of No. 14

[Image redacted for copyright reasons]

7.44 Thomas Trubshaw: design for a lodge SD 125/3(3) Ribapix 31610

[Image redacted for copyright reasons]

7.45 The Villas today: later nineteenth century urban encroachment

[Image redacted for copyright reasons]

7.46 Newton Abbot, Devon: Devon Square and Courtenay Park. Ordnance Survey, 1878

[Image redacted for copyright reasons]

7.47 Devon Square from the north-east, 1928



a south elevation



b central house



c end pavilion to west

7.48a-c Devon Square, Newton Abbot: southern terrace



7.49 Devon Square, west side



7.50 Devon Square, north side



7.51 Newton Abbot: Courtenay Park, 1-3 Peamore Terrace



7.52 Powderham Road

[Image redacted for copyright reasons]

7.53 Abbotsleigh House, Abbotskerswell, 1847



7.54 R.S. Pope: Richmond Park Road, Bristol



7.55 Tuscany House, Durdham Park, Bristol c.1850

[Image redacted for copyright reasons]

7.56 Durdham Park, Ordnance Survey map, 1880

7.57 Chescombe Lodge, Durdham Park



7.58 Goodridge: Avonbank, Clifton Down (1857)



7.59 Vyvyan House, Clifton Park

7.60 Clifton Park Lodge



7.61 College Fields



7.62 64-66 Pembroke Road



7.63a-c Pembroke Road

b



7.64a 7-9 Whiteladies Road



b 31-33 Whiteladies Road



7.65 W.B. Gingell: 153-57 Whiteladies Road



7.66a Upper Belgrave Road



b Percival Road



c College Road



d Oakfield Close, St Paul's Road



7.67 Bristol: Cotham Brow



7.68 Bristol: All Saints' Road

[Page 82 left blank intentionally]

[Page 83 left blank intentionally]

[Page 84 left blank intentionally]

Chapter 8

[Image redacted for copyright reasons]

8.1 John Notman: Riverside, New Jersey, 1837-9

[Image redacted for copyright reasons]

8.2 Riverside illustrated in Downing, *Treatise*

[Image redacted for copyright reasons]

8.3 Notman: Prospect House, New Jersey, 1850

[Image redacted for copyright reasons]

8.4 Notman: Alverthorpe, Philadelphia, 1851

[Image redacted for copyright reasons]

8.5 Notman: Fieldwood, Princeton, 1846-53

[Image redacted for copyright reasons]

8.6 Notman: Ellarslie, New Jersey, 1848

[Image redacted for copyright reasons]

8.7 Davis: Smillie Villa, Rondout, New Jersey, from 1836; uncompleted

[Images redacted for copyright reasons]

8.8 Alexander Jackson Davis: Blandwood, North Carolina, 1844 **a** north front **b** north and west elevations

[Images redacted for copyright reasons]

8.9a and **b** Davis: Winyah Park, New Jersey, 1851, *Perspective* and as built

[Images redacted for copyright reasons]

8.10a Richard Upjohn: Edward King House, 1847 **b** Illustrated in Downing, *Country Residences*

[Images redacted for copyright reasons]

8.11 William Ranlett, *The Architect*, Vol.2, 1849-51, Designs XXII and XXIII, 'Italian villa'

[Images redacted for copyright reasons]

8.12 Samuel Sloan, *Model Architect*, 1852, 'Italian Villa'

[Image redacted for copyright reasons]

8.13 Charles Elliott, *Cottages and Cottage Life*, 1848

[Image redacted for copyright reasons]

8.14 Gervase Wheeler, Design for an Italian Villa, c.1848

[Images redacted for copyright reasons]

8.15a Andrew Jackson Downing, *Cottage Residences*, Design VIII, 'Villa in the Italian Style'

8.15b George Wightwick, *Palace of Architecture*, 'Anglo-Italian villa', shown here in mirror-image for comparison

[Image redacted for copyright reasons]

8.16 Notman, design in Downing, *Country Residences*, Design IX, 'Tuscan style'

[Image redacted for copyright reasons]

8.17 40 Kneesworth Street, Royston, Cambridgeshire, United Kingdom

[Image redacted for copyright reasons]

8.18 Downing, *Cottage Residences*, Design VI, 'Villa in the Italian Style, Bracketed'

[Images redacted for copyright reasons]

8.19a and **b** Davis, Grace Hill, Brooklyn, (the Litchfield villa) 1854-7: note the round tower

[Images redacted for copyright reasons]

8.20 Ranlett, *Architect*, 'small cottage villa in the semi-Italian mode', Design XXXVI

[Image redacted for copyright reasons]

8.21 Thomas Lewinski: Glengarry, Kentucky, 1854.

[Images redacted for copyright reasons]

8.22a Samuel Sloan: Woodland Terrace, Philadelphia, 1861

b Sloan, *Model Architect*, 1852, Vol. I, pl.18, semi-detached 'Italian Residences'

[Image redacted for copyright reasons]

8.23 Francis Greenway: alterations to Government House, Sydney, 1820

[Image redacted for copyright reasons]

8.24 Bligh Street, Sydney, c.1825-30

[Images redacted for copyright reasons]

8.25a Greenway (attrib.): Bungarribee, Blacktown, New South Wales, 1826-27

8.25b Bungarribee, plan

8.25c Ground floor interior of circular tower **8.25d** Drawing by W. Hardy Wilson, 1921

[Image redacted for copyright reasons]

8.26 Henry Cooper: Albion House, Sydney, late 1820s

[Image redacted for copyright reasons]

8.27 John Verge or Cooper: Newington, Paramatta River, NSW, 1829-32. Drawing by W. Hardy Wilson, 1921

[Images redacted for copyright reasons]

8.28a and **b** Henry Hellyer: Highfield, Tasmania, 1832-5

[Image redacted for copyright reasons]

[Image redacted for copyright reasons]

8.29 Sir George Strickland Kingston: Ayers House, Adelaide, 1859

[Image redacted for copyright reasons]

8.30 William Archer: Woolmers, Tasmania, 1845

[Image redacted for copyright reasons]

8.31 James Blackburn: Rosedale, Tasmania, 1845

[Image redacted for copyright reasons]

8.32 Blackburn: Bishops court, Melbourne, 1853 (later addition to left)

[Images redacted for copyright reasons]

8.33a William Archer: Saundridge, Cressy, Tasmania, 1840s

8.33b Saundridge, garden elevation

[Image redacted for copyright reasons]

8.34 Edward Archer: Northbury, Tasmania

[Images redacted for copyright reasons]

8.35a Charles Tringham: Westoe, Rangitikei, New Zealand, 1874 **b** Richard Brown, *Domestic Architecture*, 1841

8.35c Westoe, plans and elevations

[Images redacted for copyright reasons]

8.36a Collins Street, Annandale, Sydney, c.1880 (architect unknown)

8.36b Benjamin Ferrey: Westover Villas, Bournemouth, 1838

[Page 89 intentionally left blank]

[Page 90 intentionally left blank]

[Page 91 intentionally left blank]

[Page 92 intentionally left blank]

[Page 93 intentionally left blank]

Conclusions

[Images redacted for copyright reasons]

9.1 Blackburne, title page and p. 34

[Image redacted for copyright reasons]

9.2 Blackburne, 'Italianized Gothic'

[Image redacted for copyright reasons]

9.3 Kerr, 'Rural-Italian'



9.4 Westbourne Park Villas, west London

[Image redacted for copyright reasons]

9.5 Upper Mount, The Vale, Southsea



9.6 Villa Lugano, Vane Hill, Torquay

[Image redacted for copyright reasons]

9.7 Villa La Gaeta, San Siro, Lake Como



9.8 via Serchio, Rome

[Image redacted for copyright reasons]

9.9 Richard Harding: Broad Terraces, Legh Road, Knutsford

[Image redacted for copyright reasons]

9.10 Francis Johnson and Partners: Bank Farm, Cheshire

[Image redacted for copyright reasons]

9.11 David Coles Architects: Stowe Court, Bucks

[Image redacted for copyright reasons]

9.12 Ben Pentreath: Little Marsh House, Beaulieu, Hampshire (computer-generated image: under construction, 2016)

[Image redacted for copyright reasons]

9.13 Ike Kligerman Barkley Architects, New York: 4 Monmouth Terrace, Deal, New Jersey

[Images redacted for copyright reasons]

9.14a Fallows Gowen Partnership: Sunnyhill, Prestbury, Cheshire

b FPA Architects: Green Meadows, Hale, Cheshire

[Images redacted for copyright reasons]

9.15a Frank Lloyd Wright: Lake Mendota boathouse **b** T.F. Hunt: 'Prospect tower'

[Image redacted for copyright reasons]

9.16 Wright: Project for Robert Eckart

[Images redacted for copyright reasons]

9.17a Wright: Robie House **b** J.B. Papworth 'Cottage orné' **c** Wright: Tomek house

[Images redacted for copyright reasons]

9.18a Wright: Husser House **b** George Smith: Brooklands House, Blackheath

[Images redacted for copyright reasons]

9.19a Wright: Dana-Thomas House **b** William Playfair: Dunphail

[Page 97 left blank intentionally]

Appendix II: A Taxonomy of the Vernacular Italianate house

This scheme presents examples of Vernacular Italianate houses arranged typologically, rather than necessarily chronologically, as an aid to identifying and classifying the variants of the style which emerged. Most are executed buildings although in three cases prints are shown where the house has subsequently been substantially altered or demolished. A small number have already been presented in the Illustrations accompanying each chapter to be found in Appendix I.

NOTE:

Many images have been redacted for copyright reasons. Their sources are indicated: those which have been referred to in the text and are reproduced in Appendix I are identified by their numbers and full details of them are to be found in the relevant Schedule. 'IoE' indicates the Historic England *Images of England* database listed in the Bibliography. Where web addresses are given, these images have also been saved in digital form by the author.

John Nash's Vernacular Italianate villas

4.1	4.15	4.25
Cronkhill c.1802	Sandridge Park c.1804	Lissan Rectory c.1807

Claudean round-towered villas

6.5	6.6
Robert Lugar: Wood Hall 1814	Lugar (attrib.) Herne Hill c.1817

The towered house

i. pattern book models

5.31	5.26	5.27
Wightwick: 'Anglo-Italian villa' 1840	Loudon: Design IX 1833	Lamb 'villa in the Modern Style' 1842

ii. rural

7.53	6.70	6.42
Abbotsleigh, Devon c.1847	Underscar Manor, Keswick 1856	St Tewdric's, Chepstow 1845

[www.bathintime.co.uk Image 143282 ©bathintime]

Charlcombe Grove, Bath c.1853

[\[www.doorsopendays.org.uk/media/1582/20-bowerswell-house-perth.jpg\]](http://www.doorsopendays.org.uk/media/1582/20-bowerswell-house-perth.jpg)

Bowerswell House, Perth 1848

iii. suburban

[IoE 465770 ©Krystyna Szulecka]

Woodhouse Cliff, Leeds c.1860

[\[www.glasgowwestaddress.co.uk/Victoria_Circus/Dowanhill_Gardens_Dunmorag_2D.JPG\]](http://www.glasgowwestaddress.co.uk/Victoria_Circus/Dowanhill_Gardens_Dunmorag_2D.JPG)

6 Victoria Circus, Glasgow 1855

[\[www.aboutmyarea.co.uk/images/imgstore/804_135d8osbi6.jpg\]](http://www.aboutmyarea.co.uk/images/imgstore/804_135d8osbi6.jpg)

Oaklands House, Chelmsford c.1865

[IoE 428804 ©Stuart Grimwade]

16 Fonnereau Road, Ipswich c.1850

iv. urban

[\[www.buildington.co.uk/images/projects/b4dbda88348883ebc163dd104532fefa.400x300.png\]](http://www.buildington.co.uk/images/projects/b4dbda88348883ebc163dd104532fefa.400x300.png)

Blomfield Road, London c.1850

[IoE 287037 ©Roger Creber]

Hanger Hill, Weybridge 1854

[Rosemary Yallop]

Tregunter Road, London 1860s

8.17

Kneesworth Street, Royston c.1840

[IoE 203478 ©Richard M Brown]

1 and 3 Lowther Hill, Lewisham 1850

7.1c

Henwick Road, Worcester 1855

Italianate fenestration and vertical accent but no distinct tower

i. pattern book models

5.28

Loudon: cottage 1833

5.22j (detail)

Parker, *Villa Rustica* XXXIII 1832

ii. rural

[IoE 52939 ©Charmain Hawkins]

Old Rectory, Fowlmere, Cambs. 1853

[Rosemary Yallop]

Le Moigne's, Wrington, Somerset 1840s

iii. suburban

[Rosemary Yallop]

The Firs, Brampton, Staffordshire 1854

http://media.rightmove.co.uk/45k/44309/44309_CHS110229_IMG_00_0000_t.JPG

Highfield House, Curzon Park, Chester 1846

www.johncouch.co.uk/i/brochures/954_brochure.pdf

Westowe, Torquay 1850s

[Rosemary Yallop]

Courtenay Road, Newton Abbot 1850s

iv. **urban**

[Rosemary Yallop]

Ladbroke Road, west London c.1850

[Rosemary Yallop]

Mixed rustic Italianate: Upper Belgrave Road, Bristol 1860s

The semi-detached villa pair

i) **towered**

7.14b

62-64 Pembroke Road, Clifton, Bristol 1850s

[Rosemary Yallop]

Lansdowne Crescent, London 1840s

[IoE 389319 ©Dr. Geoffrey Court]

Rock Park, Birkenhead 1840s

[Rosemary Yallop]

Sundial Lodge, Torquay (built as two houses) 1848

[IoE 35535 ©Clive Jones]

Kimbolton Road, Bedford 1840s

7.14a

Stanley Crescent, London 1850s

[Rosemary Yallop]

The Park, Ealing 1846

ii) **Without tower but with vertical accent**

7.24b

Ladbroke Estate London 1840s



Eldon Square, Reading late 1830s



Eldon Road, Reading 1840 Forest Road East, Nottingham 1845 Pembroke Road Bristol c.1865

iii) Use of fenestration and eaves detail alone for Italianate effect



Whiteladies Road, Bristol 1850s Tor Gardens, Kensington 1850s Regent's Park Road, London 1850s

The terrace

[E. L. Blackburne, *Suburban Architecture, Rural and Foreign*, (London, 1867)]

Blackburne: terrace house designs, 1867



Hanbury Road Bristol c.1870

Upper Belgrave Road, Bristol 1860s



Kensington Park Road, London 1852



Elgin Crescent, London c.1854



Beresford Terrace, Highbury, London 1856



Powderham Road, Newton Abbot late 1850s

The towered terrace



Gloucester Crescent, north London 1840s

7.18a

Sandown Terrace, Chester c.1850

http://media.rightmove.co.uk/20k/19473/31600046/19473_1959078_IMG_00_0001.jpg

https://c2.staticflickr.com/4/3226/3043335166_9c858519b2_z.jpg?zz=1

Park Crescent, Brighton 1849

Appendix III: Bibliography

1. Manuscript and archival sources

- Baring Archive, London** NP.1.B.10.1-3: Northbrook papers
- Berkshire Record Office** D/EX/1358/1/1: *Conveyance of Eldon Square property*, 1835
D/EX/1358/1/2: *Mortgage deed for 13 and 15 Eldon Square*, 1835
DP 96/11/89: *St. Giles Parish Rate Book*
QR/NL Acc. 11095: *Prospectus for the first Crown Estate sale*
- Devon Record Office** 1508M: Papers of the Courtenay family, Earls of Devon
7027M: Papers relating to the Rowell family
867B/S22: *Sale catalogue for the Sandridge Estate*, 1935
- East Riding of Yorkshire Archives** zDDCC: Papers of the Chichester-Constable family
zDDCC/108/40: *Wood Hall: Abstract of title of Henry William Maister*
- Essex Record Office** Q/ABbp 9: *Letter from Robert Lugar to the Essex Justices*, 1814
- Guildhall Library, London** Wakefield Collection, K1229319: *Exterior view of Bromley Hill House* by John Chessell Buckler, c.1815
- Lambeth Archives** C203: *Notice of Sale of Ground Rents at Herne Hill*
Phillips Coll., 2278: *'A villa on Herne Hill'*, drawing, artist unknown
- National Library of Scotland** KR.16, f. 5 (1): *Catalogue for the sale of the Library of William Playfair* (1857)
- National Monuments Record (Historic England)** B42/1518-1520: *Four photographs of Sandridge Park* taken by Sir John Summerson, 1933
AA60/119-134: *Sixteen photographs of Sandridge Park* taken in 1959 by H. Felton
- Norfolk Record Office** Colman collection: L712.6: Scrapbook of original drawings of Humphry Repton: *Drawing of an Italianate farmhouse*
- Public Record Office of Northern Ireland** DIO/4: Armagh Diocesan Registry Papers 1356-1977, *Summary*
DIO/4/32/L/2/4/1: *Draft memorial from Rev. John Staples to the Archbishop of Armagh*, 1804
DIO/4/32/L/2/4/2: *Draft application from Rev. John Staples to the Board of First Fruits*, 1804
DIO/4/32/L/2/1-7: *Notifications of non-residence of clergy*
D1567/E/1/7/1: *Quittance from the Board of First Fruits, 1816; receipts for purchase of new trees; affidavit certifying number of trees planted*
D1567/F/2/2/1-28: *Building accounts addressed to Rev. John Staples for various work in the parish of Lissan*, 1806-1816
D2358: John Hargrave, *Four drawings for a new house at Fort Stewart, Co. Donegal*
- Reading Central Library** Misc. Maps Cabinet 6: *Map of Reading* by Kemp and Nichols, 1834
Ordnance Survey maps, 1879, Reading Sheets XXXVII.3.15- 20
Reference Collection qR/TA: Gold, Sidney *'A Biographical Dictionary of Architects at Reading'*, (unpublished pamphlet, 1999)

**The Royal Institute of
British Architects
Drawings and Archive
Collection**

PB 497/11: James Wilson, *Designs for alterations and additions to Charlcombe Grove, Bath*, c.1860
PB 509/18/2,4,5,6: James Wilson, *Proposed alterations to Cumberland Villa, Bathwick Hill*
SB77/6(6): William Donthorn, *Designs for the parsonage, Carr Lane, Great Moulton, for Rev. James Samuel Wiggett: elevation of entrance front*
SC 8/1 (7): E.H. Browne, *perspective drawing of an Italianate villa*, c.1834
SC 33/4(7): Sir Charles Barry, *Designs for three cottages at Trentham village*
SC 182/9(7): Decimus Burton: *View of a proposed development of villas at Furze Hill, Brighton, for Sir Isaac Goldsmid*
SC 185/2(1): Henry Kendall, *Hotel and river entrance, Rosherville, Northfleet*
SD45/5(1-2): James Playfair, *Design for an Italianate villa for Mr Balfour, 1792*
SD45/7: James Playfair, *Design for an Italianate villa including the 'Hippodrome' feature, 1792*
SD45/8: James Playfair, *Design for an Italianate country mansion, 1792*
SD45/9: James Playfair, *Design for an Italianate country villa, 1793*
SD45/10: James Playfair, *Design for a small Italianate villa, with kitchen and laundry in the form of pyramids set on either side of the courtyard at the back of the house*
SD45/12: James Playfair, *Design for an Italianate house, 1793*
SD 56/3: John Harper, *Perspective of an Italian villa in a landscape*
SD 104/22: Sydney Smirke, *Design for a villa in the Italianate style with corner towers: alternative elevations*
SD 104/26: Sydney Smirke, *Design for a three-storey house with five bays in the Italianate style: elevation of the entrance front*
SD 120/2 (1, 2): William Donthorn, *Designs for Stanground Manor House, Cambridgeshire*
SD 125/3(3): Thomas Trubshaw, *Plans and elevations for a lodge*
SD 125/3(4, 5): James Trubshaw, *Designs for two lodges*
SE 3/1(3): John Harper, *Design for a villa in the Italian style*
SE 3/1(4): John Harper, *Design for a villa in the Italian style, rear elevation*
SE 3/1(9): John Harper, *Design for a gamekeeper's lodge in the Italian style*
SE 3/1(11): John Harper, *Design for a cottage in the Grecian style and one in the Italian style*
SE 3/1(12): John Harper, *Design for a common dwelling house in the Grecian style and one in the Italian style*
SE 20/12: John Adey Repton, *Design for a conservatory, c.1810*
SKB 246/4: George Stanley Repton, *Sketchbook* compiled while in the office of John Nash, c.1798-1805:
 ff.47v, 48r, 48v, 49r, *plans and elevations for Lissan Rectory*
 f88r: *Drawing of a farmhouse*
VOS/201, f29: George Wightwick, *Designs for a villa, now called Penbellis, Cross Street, Helston, for Frederick Hill*
VOS/201, ff.34, 35, 38: George Wightwick, *Designs for Trebill House, Sheriock*
VOS/201, ff.39-41, 62: George Wightwick, *Designs for a villa, Thornhill, Compton Gifford, for Charles Cobley Whiteford*
VOS/205, f92: George Wightwick, *Designs for Ford Park Lodge, Plymouth*
Photographic collections 12562-3, 12588-9: *Photographs of four watercolour plans and elevations of Lissan Rectory, artist and whereabouts of originals unknown*

**William Salt Library,
Stafford**

117/39: Notebooks of Charles Lynam, 1861-1921

Shropshire Record Office

X49: Scott family papers:
 49/2/3/8/750a: *Walford marriage settlement, to include lease of Cronkhill, 1816*
 49/761-851: *Letters from Mrs. Francis Walford to various family members, 1824-27*

- X112: Attingham Papers:
 112/6: Financial Records:
 112/6/2/44/£110: *Building materials invoices agreed by John Nash*, 1808
 112/6/2/57/£69: *Invoice to Lord Berwick for work done at Cronkhill*,
 November 1807
 112/14: Papers of Thomas Noel-Hill, 2nd Baron Berwick:
 112/14/2/Box 66D/£.99a: *Lord Berwick's memorandum of discussions with
 Walford over a lease of Cronkhill*, 1814
 112/14/2/Box 66D/£.146 *Comments by Lord Berwick's attorney on
 Walford's excessive salary*, 1828
 112/14/2/68/ff.201, 205: *Walford to Lord Berwick, evidencing a strained
 relationship*, 1815
 112/14/2/68/£.150: *Charles Tennant to Lord Berwick: 'the peculiar feelings
 which your Lordship appears to entertain'*, 1828
 XP19/L/2/2: Atcham Parish papers: *Vestry minutes*, 1831-46
- Staffordshire Record Office** D997/Maps/6: *Survey of the parish of Stoke for the Improvement
 Commissioners*, 1839
- Stokeville Building Society,
 being the Residents'
 Association of The Villas,
 Stoke-on-Trent** *Minutes and papers relating to the Stokeville Building Society*
- Suffolk Record Office** Bury613: Papers of the Barnardiston family
- Tate Gallery, London** Turner Bequest:
 St. Peter's Sketchbook, TB CLXXXVIII, D16302: *Casa Cenci*
 Windmill and Lock Sketchbook, TB CXIV, D08065: *Sandycombe Lodge,
 Twickenham, unexecuted elevations and plans*
 Working Drawings for Sandycombe Lodge, TB CXX-R, D08232:
Ground Plan and elevations of an unexecuted design for Sandycombe Lodge
 Sandycombe and Yorkshire Sketchbook, TB CXXVII-15, D08985:
Alternative prospects of and an elevation design for Sandycombe Lodge
 Devonshire Coast, No.1 Sketchbook, TB CXXIII-94, D08547:
Dittisham from the River Dart, 1811
- The National Archives,
 Kew** PROB 11: Prerogative Court of Canterbury, Will Registers:
 PROB 11/2128/141: *Will of Anne Walford, heretofore Scott, theretofore
 Morse, of Cronkhill, Shropshire*, proved London, 14 February 1851
 PROB 11/2233: *Will of Robert Lugar*, proved London, 9 May, 1856
 MPE 1/911: *Plan of the area of Park Village, Regent's Park, with wash
 drawings of eight types of villa proposed to be built*. John Nash, 24 December
 1823
- Newton Abbot Museum,
 Devon** *Notice of Annual General Meeting of the Newton Abbot and Newton Busbel
 Associated Building Company*, 1841 [uncatalogued]
- Sir John Soane's Museum** 65/3/1: Sir John Soane, *Design for a prospect tower for John Dennison,
 Ossington Hall*, c.1786
 73/5/1: George Stanley Repton, *Perspective of Cronkhill showing the house
 in a landscape setting*, c.1802
 P347: Joseph Michael Gandy, *Perspective view of the State Paper Office
 designed by Sir John Soane*
 MR3: Francis Fouquet, *Model of the Pantheon, Rome*, c.1800-34

2. Acts of Parliament

An Act to enable James Weller Ladbrokee [sic] Esq. and others to grant building leases of lands in Kensington, Paddington, Nottingbarns and Westborne, in the County of Middlesex: Private Act, 1 & 2 Geo. IV. c.26

3. Newspapers and periodicals

Architectural Magazine

Builder

Building News

Cheltenham Chronicle

Civil Engineer and Architect's Journal

Eddowes's Journal and General Advertiser for Shropshire and the Principality of Wales

Exeter and Plymouth Gazette

Exeter Flying Post

Gardener's Magazine

Gentleman's Magazine

Liverpool Mercury

London Literary Gazette and Journal of Belles Lettres, Arts, Sciences &c.

Morning Advertiser

Morning Chronicle

Morning Post

Reading Mercury

Repository of Arts, Literature, Commerce, Manufactures, Fashions and Politics

Staffordshire Advertiser

The Times

Western Times

4. Books

- Ackerman, James *The Villa: Form and Ideology of Country Houses*, (Princeton and London, 1990)
- Aikin, Edmund *Designs for villas and other rural buildings*, (London, 1808)
- Aikin, John *A Description of the Country from 30 to 40 miles around Manchester*, (London, 1795)
- Airs, Malcolm
(_____) (ed.) *The Regency Great House*, (Oxford, 1998)
The Victorian Great House, (Oxford, 2000)
- Akenson, D.H. *The Church of Ireland: Ecclesiastical Reform and Revolution, 1800-1885*, (New Haven and London, 1971)
- Allen, John *Bibliotheca Herefordiensis; or, A descriptive catalogue of books, pamphlets, maps, prints, & &c, relating to the County of Hereford*, (Hereford, 1821). Bodleian Library copy: 258.h.165
- Allibone, Jill *Anthony Salvin: Pioneer of Gothic Revival Architecture*, (Cambridge, 1988)
- Andrews, Malcolm
(_____) (ed.) *The Search for the Picturesque: Landscape, Aesthetics and Tourism in Britain, 1760-1800*, (Stanford, 1989)
The Picturesque: Literary Sources and Documents, (3 vols., Mountfield, 1994)
- Andrews, Martin *Landscape and Western Art*, (Oxford, 1999)

- Archer, John
(_____)
The Literature of British Domestic Architecture 1715-1842, (Cambridge MA, 1985)
Architecture and Suburbia: from English Villa to American Dream House, 1690-2000 (Minneapolis, 2005)
- Arnold, Dana (ed.)
(_____)
The Picturesque in late Georgian England, (London, 1995)
The Georgian Villa (Stroud, 1996)
- Ballantyne, Andrew
Architecture, Landscape and Liberty: Richard Payne Knight and the Picturesque, (Cambridge, 1997)
- Barry, Alfred
Memoir of the Life and Works of the late Sir Charles Barry, Architect, (London, 1870)
- Bartell, Edmund
Hints for picturesque improvements in ornamented cottages, (London, 1804)
- Batty, Elizabeth Frances
Italian Scenery, (London, 1820)
- Bayliss, Anne
The Life and Works of James Trubshaw, (Stockport, 1978)
- Beales, Derek and Eugenio Biagini
The Risorgimento and the Unification of Italy, (2nd edition, London, 2002)
- Behler, Ernst
German Romantic Literary Theory, (Cambridge, 1993)
- Bence-Jones, Mark
Burke's Guide to Country Houses, Vol 1: Ireland, (London, 1978)
- Bermingham, Ann
Landscape and Ideology: The English Rural Tradition, 1740-1860, (Berkeley, 1989)
- Betjeman, John
Selected Poems, (London, 1948)
- Black, Jeremy
The British Abroad: the Grand Tour in the Eighteenth Century, (Stroud, 1992)
- Blackburne, E.L
Suburban and Rural Architecture, English and Foreign, (London, 1867)
- Blackie, Robert (ed.)
Villa and Cottage Architecture: Select examples of Country and Suburban Residences recently created, (Glasgow, 1868)
- Bonhams, Messrs.
Catalogue for sale no. 20510, Edinburgh, 24 October 2012
- Bourgeois, Constant
Recueil de vues et fabriques pittoresques d'Italie dessinées d'après nature, (Paris, 1804)
- Brand, Charles
Italy and the English Romantics: the Italianate Fashion in Early Nineteenth-Century England, (Cambridge, 1957)
- Brayley, Edward Westlake and John Britton
A Topographical History of Surrey, (5 vols., Dorking and London, 1841-48)
- Brewer, John
The Pleasures of the Imagination: English Culture in the Eighteenth Century, (London, 1997)
- Briggs, Asa
The Age of Improvement, 1783-1867, (London, 1959)
- Britton, John
Descriptive Sketches of Tunbridge Wells and the Calverley Estate, (London, 1832)
- Broadbent, James
The Australian Colonial House: Architecture and Society in New South Wales, 1788-1842, (Sydney, 1997)
- Broadbent, James and Joy Hughes
Francis Greenway, Architect, (Sydney, 1997)

- Brodie, Antonia, A. Felstead, J. Franklin, L. Pirfield and J. Oldfield *Directory of British Architects 1834-1914*, (2 vols., London, 2001)
- Brooks, Samuel H. *Designs for Cottage and Villa Architecture*, (London, 1839)
- Brown, Richard *Domestic Architecture, containing a history of the science and the principles of designing public edifices, private dwelling houses, country mansions and suburban villas, with practical dissertations on every branch of building....*, (London, 1841)
- Burfield, Diana *Edward Cressy*, (Donnington, 2003)
- Burke, Edmund *A Philosophical Enquiry into the Origins of our ideas of the Sublime and the Beautiful*, (5th edition, London, 1767)
- Burnett, John *A Social History of Housing, 1815-1985*, (2nd edition, London, 1986)
- Busby, Charles *A series of Designs for villas and country houses*, (London, 1808)
- Byron, George, 6th Baron *Childe Harold's Pilgrimage*, (London, 1818)
- Carter, G., P. Goode, and K. Laurie *Humphry Repton, Landscape Gardener, 1752-1818*, Exhibition catalogue, Sainsbury Centre for Visual Arts, (Norwich, 1982)
- Castell, Robert *The Villas of the Ancients Illustrated*, (London, 1728), British Library copy: GRC 62.i.7.
- Chalklin, Christopher *The Provincial Towns of Georgian England*, (London, 1974)
- Chambers, Sir William, (ed. Joseph Gwilt) *A Treatise on the decorative part of civil architecture*, (2 vols., London, 1825)
- Clark, P. (ed.) *The Cambridge Urban History of Britain*, Vol. 2, (Cambridge, 2000)
- Clochar, Pierre *Palais, Maisons et Vues d'Italie*, (Paris, 1809)
- Coffin, David (_____) (ed.) *The Villa in the Life of Renaissance Rome*, (Princeton, 1979)
The Italian Garden, (Washington, 1972)
- Colvin, H.M. *A Biographical Dictionary of British Architects 1600-1840*, (4th edition, New Haven and London, 2008)
- Colvin, H. M. and John Newman (eds.) *Roger North's Writings on Architecture*, (Oxford, 1981)
- Conisbee, Philip *Claude-Joseph Vernet, 1714-1789*, Exhibition catalogue, Kenwood House, (London, 1976)
- Copley, Stephen and Peter Garside (eds.) *The Politics of the Picturesque: Literature, Landscape and Aesthetics since 1770*, (2nd edition, Cambridge, 2010)
- Cornforth, John *English Interiors, 1790-1848: the Quest for Comfort*, (London, 1978)
- Couapel, Jean-Jacques (ed.) *Clisson, ou le retour d'Italie*, Exhibition catalogue, (Paris, 1990)
- Couapel, Jean-Jacques and Anne Duflos *Voyage Italien à Clisson*, (Nantes, 1996)
- Cowper, William *The Task*, (London, 1785)

- Crook, J. Mordaunt *The Dilemma of Style*, (Chicago, 1987)
- Cruikshank, George *Scraps and Sketches*, (London, 1829)
- Cumberland, George *Bromley Hill: The seat of the Rt Hon Charles Long M.P.*, (London, 1811) and revised edition (London, 1816)
- Curl, James Stevens
(_____) *Victorian Architecture: Diversity and Invention*, (Reading, 2007)
Georgian Architecture in the British Isles, 1714-1830, (2nd edition, Swindon, 2011)
- Daniels, Stephen *Humphry Repton: Landscape Gardening and the Geography of Georgian England*, (New Haven and London, 2000)
- Davidoff, Leonore and Catherine Hall *Family Fortunes: Men and Women of the English Middle Class, 1780-1850*, (London, 1987)
- Davis, Alexander Jackson *Rural Residences, consisting of Designs, Original and Selected, for Cottages, Farm-houses, Villas and Village churches*, (New York, 1837)
- Davis, Terence
(_____) *The Architecture of John Nash*, (London, 1960)
John Nash: The Prince Regent's Architect, (2nd edition, Newton Abbot, 1973)
- Day, Angélique, Patrick McWilliams and Lisa English (eds.) *Ordnance Survey Memoirs of Ireland*, Vol. 31, (Belfast, 1996)
- Dearn, Thomas *Sketches in Architecture*, (London, 1807)
- Defoe, Daniel *A Tour through the Whole Island of Great Britain*, (London, 1724)
- Dilly, Charles (ed.) *Dr. Johnson's Table Talk*, (London, 1798)
- Dixon, Hugh *Ulster Architecture, 1800-1900*, Exhibition catalogue, (Ulster Architectural Heritage Society, 1972)
- Dixon Hunt, John and Peter Willis *The Genius of the Place*, (London, 1975)
- Dixon Hunt, John *The Picturesque Garden in Europe*, (London, 2002)
- Dobraszczyk, Andrew *Keele University Social History Walks: The Villas*, (undated, Keele University Library Special Collections: Local Collection, pamphlets)
- Downing, Andrew Jackson
(_____) *A Treatise on the Theory and Practice of Landscape Gardening, adapted to North America, with a view to the Improvement of Country Residences*, (New York, 1841)
(_____) *Cottage Residences, or a series of Designs for rural cottages and cottage villas and their gardens and grounds, adapted to North America*, (New York, 1842)
(_____) *The Architecture of Country Houses*, (New York, 1850)
- Durand, Jean-Nicolas-Louis
(_____) *Recueil et Parallèle des édifices en tout genre, anciens et modernes*, (Paris, 1801)
Précis des leçons d'architecture données à l'École Polytechnique, (Paris, 1802-1805)
- Earlom, Richard *Liber Veritatis: Or, a collection of two hundred prints after the designs of Claude le Lorrain in the collection of His Grace the Duke of Devonshire, executed by Richard Earlom in the Manner and Taste of the Drawings*, (London, 1777)

- Edwards, Edward *A Practical Treatise of Perspective*, (London, 1803)
- Elliott, Charles *Cottages and Cottage Life*, (Cincinnati, 1848)
- Elmes, James *A general and bibliographical dictionary of the fine arts*, (London, 1826)
- Elsam, Richard *An Essay on Rural Architecture*, (London, 1803)
- Evans, Robert Harding *Catalogue of the valuable architectural and miscellaneous library, prints and drawings of the late John Nash Esq.*, (London, 1835) Soane copy: Soane Coll.2215
- Ferrey, Benjamin *Recollections of A.W.N. Pugin*, (London, 1861)
- Field, Marriott
(_____) *City Architecture*, (New York, 1853)
Rural Architecture, (New York, 1857)
- Fowler, Orson Squire *A Home for All*, (New York, 1848)
- Galinou, Mireille *Cottages and Villas: the birth of the Garden Suburb*, (New Haven and London, 2010)
- Gandy, Joseph M.
(_____) *Designs for Cottages, Farms and Other Rural Buildings*, (London, 1805)
The Rural Architect, (London, 1805)
- Garric, Jean-Philippe *Recueils d'Italie: les modèles italiens dans les livres d'architecture français*, (Sprimont, Belgium, 2004)
- Garzanti Linguistica (publisher) *Dizionario Garzanti*, 13th edition, (Milan, 1983)
- George, Susan *Liverpool Park Estates*, (Liverpool, 2000)
- Gilpin, William *Three Essays: on Picturesque Beauty; on Picturesque Travel; and on Sketching Landscape*, (London, 1794)
- Girouard, Mark
(_____) *The Victorian Country House*, (revised edition, New Haven and London, 1979)
Cities and People, (New Haven and London, 1985)
- Gladstone, F. and A Barker *Notting Hill in Bygone Days*, (London, 1969)
- Gloag, John
(_____) *Victorian Taste, 1820-1900*, (Newton Abbot, 1962)
Mr Loudon's England, (Newcastle, 1970)
- Gold, Sidney *'A Biographical Dictionary of Architects at Reading'*, (unpublished pamphlet, 1999), Reading Central Library Reference Collection qR/TA
- Gomme, Andor and David Walker *The Architecture of Glasgow*, (2nd edition, London, 1987)
- Gomme, Andor, Michael Jenner and Bryan Little *Bristol: an Architectural History*, (London, 1979)
- H.S. Goodhart-Rendel *English Architecture since the Regency* (London, 1953; 1989 National Trust reprint, p.32)
- Goodwin, Francis
(_____) *Domestic Architecture ... in the Grecian, Italian and Old English styles ...*, (2 vols., London, 1833-4)
Rural Architecture, (London, 1835)

- Gori-Montanelli, Lorenzo *Architettura Rurale in Toscana*, (Florence, 1978)
- Graham, Cuthbert *Archibald Simpson, Architect of Aberdeen*, (Aberdeen, 1990)
- Grandjean de Montigny, Auguste-Henri-Victor and Auguste Famin *Architecture Toscane, ou palais, maisons et autres édifices de la Toscane, mesurés et dessinés*, (Paris, 1806)
- Granville, A.B. *Spas of England and Principal Sea-Bathing Places*, (2 vols., London, 1841)
- Graves, Algernon *The Royal Academy of Arts: a complete dictionary of contributors and their work from its foundation in 1769 to 1904*, (8 vols., London, 1905-6)
- Gray, Todd *The Garden History of Devon*, (Exeter, 1995)
- Gray, Todd and Margaret Rowe (eds.) *The Rev J. Swete's Travels in Georgian Devon*, (4 vols., Exeter, 1997)
- Greiff, Constance *John Notman, Architect, 1810-1865*, (Philadelphia, 1979)
- Groome, Francis *Ordnance Gazetteer of Scotland*, (6 vols., Edinburgh, 1882)
- Gunn, Rev. William *Inquiry into the Origin and Influence of Gothic Architecture*, (London, 1819)
- Gyfford, Edward *Designs for small picturesque cottages and hunting boxes*, (London, 1806)
- Hachmeister, Gretchen *Italy in the German Literary Imagination: Goethe's Italian Journey and its reception*, (Woodbridge and Rochester NY, 2002)
- Hafertepe, Kenneth and James O'Gorman
(_____) *American Artists and their Books to 1848*, (Boston, 2001)
American Architects and their Books, 1840-1915, (Amherst, 2007)
- Halfpenny, William and John *The country gentleman's pocket companion, and builder's assistant, for rural decorative architecture*, (London, 1753)
- Harris, John and Robert Hradsky *A Passion for Building: The Amateur Architect in England 1650-1850*, Soane Museum Exhibition catalogue, (London, 2007)
- Harrison, Max *Crowds and History: Mass Phenomena in English Towns, 1790-1835* (Cambridge, 2002)
- Herman, Morton *Early Australian Architects and their work*, (Sydney, 1954)
- Hibbert, Christopher (ed.) *Louis Simond, An American in Regency England*, (London, 1968)
- Hinchcliffe, Tanis *North Oxford*, (New Haven and London, 1992)
- Hitchcock, Henry-Russell
(_____) *Early Victorian Architecture in Britain*, (New Haven, 1954)
Architecture: Eighteenth and Nineteenth Centuries, (New Haven, 1977)
- Henry-Russell Hitchcock (ed.) *International Congress of the History of Art: Problems of the Nineteenth and Twentieth Centuries*, (Princeton, 1963)
- Hornsby, Clare (ed.) *The Impact of Italy: the Grand Tour and beyond*, (London, 2000).
- Hudson, Roger (ed.) *The Grand Tour, 1592-1796*, (London, 1993)
- Hunt, Thomas Frederick *Half a Dozen Hints on picturesque domestic architecture*, (London, 1825)

- (_____) *Architettura Campestre: displayed in Lodges, Garden-Houses and other buildings*, (London, 1827)
- Hussey, Christopher *The Picturesque: Studies in a point of View*, (London, 1927)
English Country Houses: Late Georgian, (Woodbridge, 1955)
- Hutton, William *The History of Birmingham*, (6th edition, London and Birmingham, 1835)
- Ike Kligerman Barkley *Ike Kligerman Barkley Houses*, (New York, 2010)
- Ison, Walter *The Georgian Buildings of Bristol*, (Bath, 1952)
- Jackson, John George *Designs for villas, on a moderate scale of expense; adapted to the vicinity of the metropolis, or large towns*, (London, 1828). Bodleian copy, 173.h.58
- Jackson, Neil *Nineteenth-century Bath Architects and Architecture*, (Bath, 1991)
- Jacques, David *Georgian Gardens: The Reign of Nature*, (London, 1983)
- Jensen, Finn *The English Semi-detached House*, (Huntingdon, 2007)
- Kelly's Directories, Ltd. (publisher) *Post Office Directory for Gloucestershire*, (London, 1863)
- Kerr, Robert *The Gentleman's House, or how to plan English residences from the Parsonage to the Palace*, (2nd edition, London, 1865)
- Knight, Richard Payne *Analytical Inquiry into the Principles of Taste*, (London, 1805)
- Laing, David *Hints for Dwellings*, (London, 1800)
- Lane, Mills *Architecture of the Old South*, (New York, 1993)
- Lauder, Thomas Dick *An Account of the Great Floods of August 1829 in the Province of Moray*, (Elgin, 1830)
- Leach, Francis *County Seats of Shropshire*, (Shrewsbury, 1891)
- Lemme, Rafaele *Le Case degli Italiani*, (Rome, 2010)
- Leslie, Rev J.B. *Armagh Clergy and Parishes: being an account of the clergy of the church of Ireland in the diocese of Armagh from the earliest time*, (Dundalk, 1911)
- Lewis, Samuel *A Topographical Dictionary of Ireland*, (2nd ed., London, 1837)
- Linstrum, Derek *Sir Jeffry Wyattville, Architect to the King*, (Oxford, 1972)
- Lloyd, Robert *Poems*, (London, 1757)
- Long, Helen *Victorian Houses and their details: the role of publications in their building and decoration*, (Oxford, 2002)
- Loudon, John Claudius *A Treatise on forming, improving and managing Country Residences* (2 vols., London, 1806)
(_____) *An Encyclopedia of Cottage, Farm and Villa Architecture and Furniture*, (London, 1833)
(_____) *The Suburban Gardener and Villa Companion*, (London, 1838)
(_____) *First Additional Supplement to the Encyclopedia of Cottage, Farm and Villa Architecture and Furniture*, (London, 1842)

- Lugar, Robert *Architectural Sketches for Cottages, Rural Dwellings, and Villas, in the Grecian, Gothic and Fancy styles with plans, Suitable to Persons of Genteel Life and Moderate Fortune*, (London, 1805)
(_____) *The Country Gentleman's Architect*, (London, 1807)
- Lukacher, Brian *Joseph Gandy: An Architectural Visionary in Georgian England*, (London, 2006)
- Lynam, C. Peter *Charles Lynam and his family*, (Ashstead, 2005)
- Lyon and Turnbull, Messrs. *Catalogue to sale no. 304*, Edinburgh, 26 January 2011
- Macarthur, John *The Picturesque: architecture, disgust and other irregularities* (Abingdon, 2007)
- Malton, James *Essay on British Cottage Architecture* (London, 1798)
(_____) *Collection of Designs for Rural Retreats, as Villas* (London, 1802)
- Mansbridge, Michael *John Nash*, (London, 1991)
- Manwaring, Elizabeth Wheeler *Italian Landscape in Eighteenth Century England*, (New York, 1925)
- Maynard, W. Barksdale *Architecture in the United States, 1800-1850*, (New Haven and London, 2002)
- McFadzean, Ronald *The Life and Work of Alexander Thomson*, (London, 1979)
- McGrath, Patrick *The Merchant Venturers of Bristol: a History*, (Bristol, 1975)
- McKellar, Elizabeth *Landscapes of London*, (New Haven and London, 2013)
- Meason, Gilbert Laing *On the Landscape Architecture of the Great Painters of Italy*, (London, 1828)
- Meeks, C.L.V. *Italian Architecture, 1750-1914*, (New Haven and London, 1966)
- Middleton, Charles *Picturesque and Architectural Views for Cottages, Farm Houses and Country Villas*, (London, 1793)
- Miller, David *Archibald Simpson, Architect: his life and times*, (Forres, 2006)
- Mingay, G.E. *Land and Society in England*, (London, 1994)
- Moore, Rev. Thomas *History of Devonshire*, (3 vols., London, 1829-33)
- Morley, John *Regency Design*, (London, 1993)
- Morozzi, Ferdinando *Delle Case de' Contadini: Trattato Architetonico*, (Florence, 1770)
- Morris, Robert *Lectures on Architecture*, (London, 1736)
- Mowl, Timothy and Brian Earnshaw *Trumpet at a Distant Gate: the Lodge as Prelude to the Country House*, (London, 1985)
- Murdoch, John (ed.) *The Discovery of the Lake District: A northern Arcadia and its uses*, Exhibition catalogue, Victoria and Albert Museum, 1984
- National Trust, The *Guidebook to Attingham*, (revised edition, Swindon, 2008)
- Neale, John *Views of the Seats of Noblemen and Gentlemen*, (Second series, Vol. III, London, 1826)

- Nicholls, Robert *A History of the City of Stoke-on-Trent and the Borough of Newcastle-under-Lyme, compiled by Robert Nicholls from the History Published by John Ward etc.*, (Hanley, 1931)
- Olsen, Donald J. *The City as a Work of Art: London, Paris, Vienna*, (New Haven, 1986)
- Overton, Thomas *The Temple Builder's Most Useful Companion*, (London, 1766)
- Palmer, Caroline *Historic Parks and Gardens in Ceredigion*, (Llandeilo, 2004)
- Papworth, John Buonarotti *Rural Residences*, (London, 1818)
- Parker, Charles *Villa Rustica, selected from Buildings and Scenes in the vicinity of Rome and Florence, and arranged for lodges and domestic dwellings with plans and details*, (3 vols., London, 1832-41)
- Partington, C.F. *Views of London*, (London, 1834)
- Peacocke, James (under the pseudonym Jose Mac Packe) *Nutsbells, being ichnographic distributions for small villas*, (London, 1785)
- Peik, Susan M. (ed.) *Karl Friedrich Schinkel: Aspects of his work*, (Stuttgart, 2001)
- Percier, Charles and P.F.L. Fontaine *Palais, maisons et autres édifices modernes dessinés à Rome*, (Paris, 1798)
- Pevsner, Sir Nikolaus *An Outline of European Architecture*, (5th edition, London 1957)
- Pevsner, Sir Nikolaus (Mathew Aitchison, ed.) *Visual Planning and the Picturesque*, (Los Angeles, 2010)
- Pfister, Manfred *The Fatal Gift of Beauty: The Italies of British Travellers*, (Atlanta GA, 1996)
- Pilkington, Rev. Matthew *The Gentleman's and Connoisseur's Dictionary of Painters*, (London, 1798)
- Plaw, John
(_____) *Rural Architecture, consisting of designs from the simple cottage to the more decorated villa*, (London, 1785)
Ferme Ornée, (London, 1795)
- Pocock, William *Architectural Designs for Rustic Cottages, Picturesque Dwellings, Villas &c.*, (London, 1807)
- Postle, Martin and Robin Simon (eds.) *Richard Wilson and the Transformation of European Landscape Painting*, Exhibition catalogue, Yale Centre for British Art and National Museum of Wales, (New Haven and London, 2014)
- Price, Uvedale *Essays on the Picturesque as compared with the Sublime and Beautiful*, (expanded edition, London, 1810)
- Pugin, Augustus Welby Northmore *The True Principles of Pointed or Christian Architecture*, (London, 1841)
- Radice, Betty *The Letters of Pliny the Younger*, (Harvard, 1969)
- Randall, James *A collection of architectural designs for mansions, casinos, villas, lodges and cottages from original drawings*, (London, 1803)
- Ranlett, William *The Architect*, (2 vols., New York, 1849-51)

- Repton, Humphry
(_____)
(_____)
Sketches and Hints on Landscape Gardening, (London, 1795)
Observations on the Theory and Practice of Landscape Gardening, (London, 1803)
Fragments on the Theory and Practice of Landscape Gardening, (London, 1816)
- Riley, R.C.
Portsmouth Paper No.32: The Houses and Inhabitants of Thomas Ellis Owen's Southsea, (Portsmouth City Council, 1980)
- Robinson, Peter Frederick
(_____)
(_____)
Rural Architecture, or a series of designs for ornamental cottages, (London, 1823)
Designs for Ornamental Villas (London, 1827)
Designs for Farm Buildings, (London, 1830)
- Ruskin, John
The Seven Lamps of Architecture, (London, 1849)
- Salmon, Frank
Building on Ruins (Aldershot and Burlington VT, 2000)
- Seheult, François-Léonard
Recueil d'architecture dessiné et mesuré en Italie dans les années 1791-3, (Paris, 1821)
- Shepherd, Thomas Hosmer and James Elmes
Metropolitan Improvements, or London in the nineteenth century displayed in a series of engravings, (London, 1827)
- Sheppard, F.H.W. (General Editor)
(_____)
Survey of London, Volume 37: Northern Kensington, (London, 1973)
Survey of London, Volume 38: The Museums Area of South Kensington and Westminster, (London, 1975)
- Simo, Melanie
London and the Landscape, (New Haven and London, 1988)
- Sloan, Samuel
The Architect, (2 vols., New York, 1849-51)
- Soane, Sir John
Designs in architecture, (London, 1778)
- Smirke, Sir Robert
Specimens of Continental Architecture, (London, 1806)
- Somers Cocks, J.V.
Devon Topographical Prints 1660-1870: A Catalogue and Guide, (Exeter, 1977)
- Sonnabend, Martin
Claude Lorrain: The Enchanted Landscape, Exhibition catalogue, Ashmolean Museum, (Oxford, 2011)
- Sotheby's, Messrs.
Catalogue for a Sale of British Architectural Drawings and Watercolours, London, 12 June, 1980
- Southey, Robert (under the pseudonym Don Manuel Alvarez Espriella)
Letters from England, (2 vols., London, 1808)
- Steffens, Martin
K.F. Schinkel, (Cologne, 2003)
- Stopani, Renato
La Casa Colonica Toscana: Storia, Cultura e Architettura, (Florence, 2006)
- Storrer, William Allin
The Architecture of Frank Lloyd Wright: A Complete Catalogue, (3rd edition, Chicago and London, 2002)
- Summerson, Sir John
(_____)
(_____)
(_____)
John Nash: Architect to King George IV, (London, 1935)
Architecture in Britain, 1530-1830, (9th edition, New Haven and London, 1993)
The Life and Work of John Nash, Architect, (London, 1980)
The Unromantic Castle, (London, 1990)

- (_____) *Georgian London*, (6th edition, New Haven and London, 2003)
- Sweet, Rosemary *Cities and the Grand Tour: The British in Italy, 1690-1820*, (Cambridge, 2012)
- Sweet, Rosemary *The English Town 1680-1840*, (Harlow, 1999)
- Syers, Robert *The History of Everton*, (Liverpool, 1830)
- Tagliaferri, Carla *I Casali della Campagna Romana*, (2nd edition, Rome, 1991)
- Tarbuck, Edward *The Builder's Practical Director, or Buildings for all Classes, Enabling Every Freeholder to be his Own Surveyor and Builder*, (London, 1855)
- Tatman, Sandra and Roger Moss *Biographical Dictionary of Philadelphia Architects*, (Philadelphia, 1985)
- Temple, Nigel
(_____) *John Nash and the Village Picturesque*, (Gloucester, 1979)
George Repton's Pavilion Notebook: A catalogue raisonné, (Aldershot, 1993)
- Thomson, James *Retreats: a series of designs, consisting of plans and elevations for cottages, villas, and ornamental buildings*, (London, 1827)
- Trendall, Edward W. *Original designs for Cottages and Villas in the Grecian, Gothic and Italian styles of Architecture, in which strict attention is paid to unite convenience and elegance with economy, adapted to the environs of the Metropolis and large towns*, (London, 1831)
- Twombly, Robert C. *Frank Lloyd Wright: His Life and His Architecture*, (New York, 1979)
- Tyack, Geoffrey
(_____) (ed.) *Sir James Pennethorne and the making of Victorian London*, (Cambridge, 1992)
John Nash: Architect of the Picturesque, (Swindon, 2013)
- Tyack, Geoffrey and Malcolm Airs (eds.) *The Renaissance Villa in Britain 1500-1700*, (Oxford, 2007)
- van Os, Henk *Dreaming of Italy*, Exhibition catalogue, Royal Picture Gallery Mauritshuis, (The Hague, 2006)
- Vaux, Calvert *Villas and Cottages* (New York, 1857)
- Walton, John and Jason Wood (eds.) *The Making of A Cultural Landscape: The English Lake District as Tourist Destination 1750-2010*, (Farnham, 2013)
- Warrell, Ian (ed.) *Turner Inspired: in the Light of Claude*, Exhibition catalogue, National Gallery, (London, 2012)
- Watkin, David
(_____)
(_____) *Thomas Hope, 1769-1831 and the Neo-Classical Idea*, (London, 1968)
The English Vision, (London, 1982)
English Architecture, (2nd edition, London, 2001)
- Watkin, David and Philip Hewat-Jaboor (eds.) *Thomas Hope, Regency Designer*, Exhibition catalogue, Victoria & Albert Museum, (New Haven and London, 2008)
- Watkin, David and Robin Middleton *Neoclassical and Nineteenth Century Architecture*, (2 vols., London, 1980)
- Watkins, Charles and Ben Cowell *Uvedale Price: Decoding the Picturesque*, (Woodbridge, 2012)
- Watson, J. and W. *Morayshire Described*, (Elgin, 1868)

Wetten, Robert	<i>Designs for villas in the Italian style of architecture</i> , (London, 1830)
Wheeler, Gervase (_____)	<i>Rural Homes, or Sketches of houses suited to American Country Life</i> , (New York, 1851) <i>Homes for the People in Suburb and Country: the Villa, the Mansion and the Cottage</i> , (New York, 1855)
Whitfield, H.J.	<i>Rambles in Devonshire</i> , (London, 1854)
Wightwick, George (_____)	<i>The Palace of Architecture: a romance of art and history</i> , (London, 1840) <i>Hints to Young Architects about building in the Country</i> , (London, 1846; American edition 1847)
Williams, Sydney	<i>Antique Blue and White Spode</i> , (London, 1950)
Wilton, Andrew	<i>Turner in his time</i> , (2 nd edition, London, 2006)
Windscheffel, Alex	<i>Popular Conservatism in Imperial London</i> , (Woodbridge, 2007)
Withey, Henry F. and Elsie Rathburn Withey	<i>Biographical Dictionary of American Architects (Deceased)</i> , (Los Angeles, 1956)
Woodford, John and Daniel Karlin	<i>The Poems of Robert Browning</i> , Vol. III, (London, 2014)
Worsley, Giles (_____)	<i>Architectural Drawings of the Regency Period</i> , (London, 1991) <i>Classical Architecture in Britain: The Heroic Age</i> , (New Haven and London, 1995)
Ziegler, Philip	<i>The Sixth Great Power: Barings, 1762-1929</i> , (London, 1988)

Buildings of England Series: Penguin Books/Yale University (London and New Haven)

Cited in the text as *Buildings of England*: (_____)

Cherry, Bridget and Nikolaus Pevsner (_____) (_____) (_____)	<i>Devon</i> , (2 nd edition, 1991) <i>London 2: South</i> (2002) <i>London 3: North West</i> , (1991) <i>London 4: North</i> , (2 nd edition, 1999)
Foyle, Andrew	<i>Bristol</i> , (2 nd edition, 2009)
Pevsner, Nikolaus	<i>Staffordshire</i> , (1974)
Pevsner, Nikolaus and Edward Hubbard	<i>Cheshire</i> , (1971)
Pollard, Richard, Nikolaus Pevsner and Joseph Sharples	<i>Lancashire: Liverpool and the South-West</i> , (2006)
Rowan, Alistair	<i>North-West Ulster</i> , (1979)
Verey, David and Alan Brooks	<i>Gloucestershire 1: The Cotswolds</i> , (3 rd edition, 2002) <i>Gloucestershire 2: The Vale and Forest of Dean</i> , (3 rd edition, 2002)
Lloyd, Thomas, Julian Orbach and Robert Scourfield	<i>Buildings of Wales: Carmarthenshire and Ceredigion</i> , (2006)

5. Articles

- Ackerman, James 'The Villa as Paradigm', in *Perspecta*, Vol. 22, 1986, pp. 10-31
- Archer, John 'Character in English Architectural Design', in *Eighteenth-Century Studies*, 12:3, Spring 1979, pp. 339-71
- Banks, J.A. 'The Contagion of Numbers' in Dyos, H.J. and M. Wolff, (eds.), *The Victorian City: Images and Realities*, (2 vols., London, 1973), Vol.1, pp. 105-122
- Blake, Stephen 'The Development of the Crown and Corporation Estates at Reading, 1828-60', in Chalklin, C.W. and J. R. Wordie (eds.), *Town and Countryside: The English Landowner in the National Economy, 1660 – 1860*, (London, 1989), pp. 147-173
- Blissett, David '“Veneerer-in-chief to the nobility”: Sir Charles Barry’s Country Houses', in Malcolm Airs (ed.), *The Victorian Great House*, (Oxford, 2000), pp. 51-69
- Blutman, Sandra 'Books of Designs for Country Houses, 1780-1815', in *Architectural History*, Vol. 11 (1968), pp. 25-206
- Bolton, Arthur 'The Italian Villa in England: Attree’s house in the Queen’s Park, Brighton', in *Country Life*, Supplement, 11 August 1917
- Brand, Charles 'A Bibliography of Travel Books describing Italy published in England, 1800-1850', in *Italian Studies*, 11 (1956), pp. 108-117
- Brownell, Charles 'The Italian Villa and the Search for an American Style, 1840-1860', in Irma B. Jaffé (ed.), *The Italian Presence in American Art, 1760-1860*, (New York, 1989), pp. 208-250
- Chase, Malcolm 'Out of Radicalism: The Mid-Victorian Freehold Land Movement', in *The English Historical Review*, Vol. 106, No.419 (April 1991), pp. 319-345
- Crook, J. Mordaunt
(_____) 'The Pre-Victorian Architect' in *Architectural History*, Vol. 12, (1969), pp. 62-78
'John Nash and the Genesis of Regent’s Park' in Geoffrey Tyack (ed.), *John Nash: Architect of the Picturesque*, (Swindon, 2013), pp. 90-100
- Davis, Terence 'John Nash in Ireland', *Quarterly Bulletin of the Irish Georgian Society*, Vol. VIII No.2, Apr-June 1965, pp. 55-63
- Davison, Graeme 'Colonial Origins of the Australian Home', in Patrick Troy (ed.), *A History of European Housing in Australia*, (Melbourne, 2000), pp. 6-25
- Dickens, Charles 'Houses to Let', in *Household Words*, 20 March 1852, pp. 5-11
- Donnell, Edna 'A.J. Davis and the Gothic Revival', *Metropolitan Museum Studies*, Vol. 5, no. 2, Sept. 1936, pp. 183-233
- Dymond, Robert 'Memoir of John Dunning, First Lord Ashburton', *Transactions of the Devonshire Association*, Vol. 8, 1876, pp. 82-112
- Esdaile, Katharine 'The Small House and its Amenities in the Architectural Handbooks: 1749-1847', in *Transactions of the Bibliographical Society* XV, (1917-1919), pp. 115-132

- Evans, Mark 'Dürer and Italy revisited: the German Connection', *Albrecht Dürer and his Legacy*, British Museum Occasional Paper no.130 (2004), www.britishmuseum.org/pdf/DürerandItalyRevisited/pdf, p. 1, [accessed 1 March 2015]
- Forsyth, Michael 'Edward Davis: Nineteenth-century Bath architect and pupil of Sir John Soane', in *Bath History*, Vol. VII (1998), pp. 107-128
- Foster, John 'The Life and Opinions of Walter Savage Landor', in *The London Quarterly and Holborn Review*, Vol.24, 1865, pp. 171-206
- Garnier, Richard 'Alexander Roos', in *Georgian Group Journal*, Vol. XV, 2006, pp. 11-68
- Gerhold, Dorian 'London's Suburban Villas and Mansions 1660-1830', in *London Journal*, Vol. 34 (3), November 2009, pp. 233-63
- Girouard, Mark 'Reducing a white elephant', in *Country Life*, 17 March 1960, pp. 582-4
- Gow, Ian ' "An Architect's Melancholy": Furniture by W H Playfair for an Irish House', in *Irish Arts Review*, 14 (1998), pp. 57-61
- Hersey, G.L. 'Association and Sensibility in Eighteenth-Century Architecture', in *Eighteenth-Century Studies*, 4:1, Autumn 1970, pp. 71-89
- Hinchcliffe, Tanis 'Highbury New Park: a nineteenth-century middle-class suburb', in *The London Journal*, 7:1, (1981), pp. 9-44
- Hitchcock, Henry-Russell 'The Nineteenth Century Italian Villa and the Significance of "Centrifugal" Planning, in *Art Historians' Congress, London 1939: Résumé of Lectures*, (London, 1939), pp. 22-23. (University of Oxford, Bodleian Libraries, Sackler Library, shelfmark 908.16 Con.)
- Hitchcock, Henry-Russell, Robert C. Smith and John R. Sherwood Correspondence in the *Journal of the Society of Architectural Historians*, Vol.11, No. 2, May 1952, pp. 27-29
- Howard, Deborah 'Some eighteenth-century English followers of Claude', in *Burlington Magazine*, Vol 111, December 1969, pp. 726-33
- Hussey, Christopher 'Calverley Park', in *Country Life*, 1 and 8 May 1969, pp. 1080-1083 and 1116-1119
- Inglis-Jones, Elizabeth 'An Eccentric's Castle House', in *Country Life*, 4 July 1952, p. 33
- Jope, E.M. 'Lissan Rectory, Kilwaughter Castle, and the buildings in the north of Ireland designed by John Nash', in *Ulster Journal of Archaeology*, Third Series, Vol.19 (1956), pp. 121-130
- Lancaster, Clay 'The designs of Major Thomas Lewinski, émigré architect in Kentucky', in *Journal of the Society of Architectural Historians*, Vol.11 no.4, December 1952, pp. 13-20
- (_____) 'Italianism in American Architecture Before 1860', in *American Quarterly*, iv, (1952), pp. 127-48
- Lazzaro, Claudia 'Rustic Country House to Refined Farmhouse: The Evolution and Migration of an Architectural Form', in *Journal of the Society of Architectural Historians*, Vol.44, No.4, December 1985, pp. 346-367
- Malenotti, Ignazio 'Delle case coloniche' in the *Giornale Agrario Toscano*, 1828, pp. 480-492

- Marshall, David 'The Problem of the Picturesque', in *Eighteenth-Century Studies*, 35:3, Spring 2002, pp. 413-37
- Martin, Megan and Scott Hill 'The architectural pattern books of Elizabeth Macquarie', in *Insites*, Historic Houses Trust for NSW, Issue 61, Summer 2009, pp. 10-11
- McDonald, D. I. 'William Wilkinson Wardell: Architect and Engineer', in *Journal and Proceedings of the Royal Historical Society of Victoria*, Vol. 41, no. 2, May 1970, pp. 327-350
- McKinstry, David 'Our Great Architect: Inigo Jones in the 1830s – A forgotten Source for the English Italianate?', in *Georgian Group Journal*, Vol. XXI, 2013, pp. 166-180
- McMordie, Michael 'Picturesque pattern books and pre-Victorian designers', in *Architectural History*, Vol. 18 (1975), pp. 43-112
- Meeks, Carroll 'Henry Austin and the Italian Villa', in *Art Bulletin*, xxx, (1948), pp. 145-9
- (_____) 'Picturesque Eclecticism' in *The Art Bulletin*, Vol. 32, No. 3, (September 1950), pp. 226-235
- Miele, Chris 'From Aristocratic Ideal to Middle-Class Idyll: 1690-1840', in Andrew Saint (ed.), *London Suburbs*, (London, 1999), pp. 31-60
- Mowl, Timothy 'The Williamane: Architecture for the Sailor King', in Roger White and Caroline Whiteburn (eds.), *Late Georgian Classicism*, proceedings of the Georgian Group Symposium, (London, 1983), pp. 92-106
- (_____) 'A Taste for Towers' in *Country Life*, 1 October 1987, pp. 152-55
- Nares, Gordon 'Clare House, Kent', in *Country Life*, 16 and 23 September 1949
- O'Donnell, Roderick 'W J Donthorn (1799-1859): "architecture with great hardness and decision in the edges"', in *Architectural History*, Vol. 21 (1978), pp. 83-92 and 120-127
- Orrin, Geoffrey 'Richard Penson as church restorer in Victorian Gower', in *Journal of the Gower Society*, Vol. 55, 2004, pp. 14-16
- Papworth, John Buonarotti 'Remarks on English Villas' in Britton, John and A.W.N. Pugin, *Illustrations of the Public Buildings of London*, (London, 1825), pp. 83-6
- Pérouse de Montclos, Jean-Marie 'De la villa rustique d'Italie au pavillon de banlieue', in *Revue de l'Art*, No. 32, (1976), pp. 23-36
- Pevsner, Sir Nikolaus (under the pseudonym P.F. Donner) 'The end of the pattern-books', in *Architectural Review*, March 1943, pp. 75-79
- Ratcliffe, Eric 'Here I raise my Ebenezer', in *Proceedings of the Tasmanian Historical Research Association*, Vol. 54 No 2, August 2007, pp. 84-104
- Riddy, Paula 'The Guidebook and the Picturesque: The Deepdene', in *Georgian Group Journal*, Vol. XXIV, 2016, pp. 159-180
- Robinson, John Martin 'The Classical Touch from the North', in *Country Life*, 18 October 2007, pp. 108-113
- Rowell, Christopher 'Furniture, Carving and Gilding at Attingham Park by Thomas Donaldson of Shrewsbury', in *Apollo Magazine National Trust Historic Houses and Collections Annual 2015*, pp. 12-20

- Salmon, Frank
 (_____)
 (_____)
- Scalbert, Irénée
- Shelley, Mary
- Simon, Robert
- Stamp, Gavin
- Sweet, Rosemary
- Sykes, Marjorie and Christopher Neve
- Tipping, H. Avray
- Turner, Michael
- Tyack, Geoffrey
 (_____)
 (_____)
 (_____)
 (_____)
- Upton, Dell
- Whitehead, David
- Wiebenson, Dora
- Wightwick, George
- ‘British Architects, Italian Fine Arts Academies and the Foundation of the RIBA’, in *Architectural History*, 39, 1996, pp. 77-113
 ‘The Battle of the Styles Continued?’, in *The Victorian Society in Manchester Summer Newsletter*, 2014, pp. 1-3
 ‘The “ordinary Italian” in Nineteenth-Century British Architecture’, in Antonio Brucculeri and Sabine Frommel (eds.), *Renaissance italienne et architecture au XIX^e siècle: Interprétations et restitutions*, (Rome, 2015), pp. 233-42
- ‘A Real Living Contact with the Things Themselves: Landscape Painters and Architects 1600-1850’ in *AA Files*, 50, Spring 2004, pp. 20-35
- ‘The English in Italy’, in *The Westminster Review*, 6 October 1826, pp. 325-51
- ‘Seeing Double’, in *Art Quarterly*, Spring 1998, pp. 90-3
- ‘At Once Classic and Picturesque’, in *Journal of the Society of Architectural Historians*, Vol. 57, No.1 (March 1998), pp. 46-58
- ‘British Perceptions of Florence in the Long Eighteenth Century’, in *The Historical Journal*, Vol. 50, No. 4 (Dec. 2007), pp. 837-859
 ‘The Changing View of Rome in the Long Eighteenth Century’, in *Journal for Eighteenth-Century Studies*, Vol. 33 No. 2 (2010), pp. 145-164
- ‘A Laundry from Damascus’, in *Country Life*, 4 March 1976, pp. -28.
- ‘Downton Castle’, in *Country Life*, 14 July 1917, pp. 36-42
- ‘From Coburg to Osborne via Naples: Prince Albert and Architectural Inspiration at Osborne’, in *Prince-Albert Studien: Künstlerische Beziehungen zwischen England und Deutschland in der viktorianischen Epoche*, Proceedings of the 16th Conference of the Prince Albert Society, Coburg 1997, pp. 21-38, 190-93
- ‘John Nash and the Park Village’, in *Georgian Group Journal*, Vol.3, 1993, pp. 68-74
 ‘The Villas of John Nash’ in Malcolm Airs (ed.), *The Regency Great House*, (Oxford, 1998), pp. 49-56
 ‘Longner Hall’ in *Georgian Group Journal*, Vol. XIV (2004), pp. 199-213
 ‘Cronkhill’, in *Country Life*, 19 February 2004, pp. 62-67
 ‘Sandridge Park’, in *Country Life*, 21 November 2012, pp. 40-44
- ‘Pattern Books and Professionalism: Aspects of the Transformation of Domestic Architecture in America, 1800-1860’, in *Winterthur Portfolio*, Vol 19 no. 2/3, 1984, pp. 107-150
- ‘Rebuilding a career: John Nash in Herefordshire 1790-1800’, in Geoffrey Tyack, *John Nash: Architect of the Picturesque*, (Swindon, 2013), pp. 19-34
- ‘Documents of Social Change: Publications about the Small House’, in Ralph Cohen (ed.), *Studies in Eighteenth-Century British Art and Aesthetics*, (Berkeley, 1985), pp. 82-127
- ‘The Life of an Architect’, in *Bentley’s Miscellany*, Vol. 52, 1857, pp.

- Wilson, John R.A. 'Italy in England: Impressions of Torquay in the nineteenth century', in *Country Life*, 25 December 1958, pp. 1508-1511
- Wilton-Ely, John 'Classic Ground: Britain, Italy and the Grand Tour', in *Eighteenth-Century Life*, Vol. 28, (1), 2004, pp. 136-65
- Woodward, Christopher
(_____) 'H.E Goodridge in Bath: The End of the Terrace and the Rise of the Villa', in *The Picturesque in late Georgian England*, (London, 1995), pp. 57-66
'Aerial Boudoirs of Bath', in *Country Life*, 4 September 1997, pp. 68-71
- Yallop, Rosemary
(_____)
(_____) 'A history of Sandridge Park: An house more worthy of the situation', in *Transactions of the Devonshire Association*, Vol. 141 (2009), pp. 181-218
'Nash and the *villa rustica*', in Geoffrey Tyack (ed.), *John Nash: Architect of the Picturesque*, (Swindon, 2013), pp. 57-74
'The enigma of Robert Lugar', in *Georgian Group Journal*, Vol. XXII, (2014), pp. 149-166
- Youngblood, Patrick 'The Painter as Architect': Turner and Sandycombe Lodge', in *Turner Studies*, 2, (1) 1982, pp. 20-35

6. Local Authority Conservation Area Appraisals and Reports

- Bath and North East Somerset Council**
(_____)
www.bathnes.gov.uk/services/planning-and-building-control/conservation-areas
Mowl, Timothy and Carole Fry, *Oakwood: an Appraisal of the Historic Gardens*, (2008)
North Road and Cleveland Walk Character Appraisal, Draft, (November 2015)
- Brighton and Hove City Council**
www.brighton-hove.gov.uk/content/planning/heritage
Montpelier and Cliftonbill Conservation Area Appraisal, (2015)
- Bristol City Council**
(_____)
www.bristol.gov.uk/planning-and-building-regulations/conservation
Clifton and Durdham Downs: A Landscape History, Final Report, (February 2006)
Clifton and Hotwells Conservation Area Appraisal, (June 2010)
- Malvern Hills District Council**
www.malvern hills.gov.uk/the-historic-environment
Trinity Conservation Area Appraisal, (2009)
- City of Nottingham Planning Department and the Nottingham Park Conservation Trust**
www.thenottinghamparkestateltd.co.uk/images/site_images/23_The_Park_Conservation_Plan_approved_July_2007.pdf
Allan Mulcahy, *The Park Conservation Area Appraisal*, (August 2007)
- Reading Borough Council**
www.reading.gov.uk/conservationareas
Eldon Square Conservation Area Appraisal, Draft 2, (2007)
- Sheffield City Council and Friends of High Hazels Park**
www.sheffield.gov.uk/dms/scc/management/corporate-communications/documents/leisure-culture/
High Hazels Park: a short history, (undated)

Stoke-on-Trent City Council
www.stoke.gov.uk/ccm/content/planning/planning-general/local-development-framework/conservation-and-heritage/conservation-area--documents.en

Conservation Area Appraisal for The Villas,
(February 2007)

Teignbridge District Council

(_____)

www.teignbridge.gov.uk/appraisals

Newton Abbot Town Centre, Courtenay Park and Devon Square Conservation Area Appraisal, (2010)
Wolborough Hill Conservation Area Character Appraisal, (2011)

Tunbridge Wells Borough Council

(_____)

<http://www.tunbridgewells.gov.uk/residents/planning/conservation-and-heritage/conservation-areas>

Royal Tunbridge Wells Conservation Area Appraisal,
(November 2000)

The Kent Compendium of Historic Parks and Gardens
(June 2009)

7. Local authority planning applications

Aylesbury Vale District Council	08/00122.APP: Trewetha (now Stowe Court), Dadford Road, Stowe MK18 5DA
Cheshire and West Chester Council	98/00884/FUL: Bank Farm, Oldcastle, Malpas SY14 7NG
Cheshire East Council	10/2973M: Sunnyhill, 4 Dale Head Road, Prestbury SK10 4BL
New Forest National Park Authority	14/00134: Little Marsh House, Parkshore, Beaulieu, Brockenhurst SO42 7XL
North Dorset District Council	2/1978/0292 and 0710: The Nash, Marnhull, DT10 1JZ
South Hams District Council	52/0721/07/LB; 52/2116/09/F, Drawing 1707/H/DE-34a: Sandridge Park, Stoke Gabriel, Devon TQ9 6RL
Trafford Council	H/67838: Green Meadows, Barrow Lane, Hale, Cheshire WA15 0DN

8. Unpublished theses and reports

Blake, Stephen	'The Development of the Crown and Corporation Estates at Reading, 1828-60', (unpublished doctoral thesis, University of Reading, 1976)
Blissett, David	'Sir Charles Barry: A Re-assessment of his Travels and Early Career', (unpublished doctoral thesis, Oxford Polytechnic, 1984)
Blutman, Sandra	'English Country Houses, 1780-1815', (unpublished M. Phil dissertation, University of London, 1967)
Bradney, Jane	'The Italian Garden in England 1787-1863', (unpublished doctoral thesis, University of Bath, 2008)

Frost, Amy	'From classicist to eclectic: the stylistic development of Henry Edmund Goodridge, 1797-1864', (unpublished doctoral thesis, University of Bath, 2009)
Hubbard, Timothy	'Towering Over All: The Italianate Villa in the Colonial Landscape', (unpublished doctoral thesis, Deakin University, Australia, 2003)
Jackson, Neil	'The Speculative House in London c.1832-1914', (unpublished doctoral thesis, Polytechnic of the South Bank, London, 1982)
Nock, Emma	'Cronkhill', unpublished report prepared for the National Trust Project Curator at Attingham Park, (October 2011)
Turner, Joan	'The Stokeville Building Society 1850-56 and those who became involved in the project', (unpublished M.A. History dissertation, University of Keele, 1975)

9. Personal communications

- with the Rev. Alan Cross, Rector of Lissan, regarding the later history of Lissan Rectory; in person and by e-mail, various dates, 2011-2013
- with Alec Hamilton, Cheltenham, regarding works by Samuel Daukes; by e-mail and in person, various dates, Spring 2014
- with Sarah Kay, National Trust Project Curator for Attingham Park, and Dr. Emma Nock, researcher, regarding Cronkhill and Attingham Park; by e-mail and in person, various dates, 2009-2015
- with Linda Lott, Rare Books Librarian, Dumbarton Oaks, Washington D.C., regarding the attribution and date of a watercolour of Panson Cottage; by e-mail, December 2015
- with Moira Lovegrove, Jane Waller and Clara Harrow of The Baring Archive, regarding Lady Elizabeth Ashburton and Sandridge Park; by e-mail and in person, 2006, 2007 and 2010
- with Sir Geoffrey Newman, Bt., of Strete, Devon, regarding his family's tenancy of Sandridge Park and sketches of it by a family member; in person, various dates, from Spring 2015
- with the Hon. Eliza Pakenham, Tullynally Castle, Co. Westmeath, regarding Nash's proposed alterations to Langford Lodge for Lady Longford; by e-mail, January 2016
- with David Whitehead, Hereford, regarding Panson Cottage; by e-mail, November 2014
- with Cathy Wilson, RIBA Drawings and Archives Collection, Victoria & Albert Museum, regarding the origins of the 'Italianate' description in catalogue entries for certain James Playfair drawings, by e-mail, January 2017

10. Electronic databases

www.historicengland.org.uk/listing/the-list

Statutory list of designated buildings of historic interest in England and Wales. Where reference is made in the text to information contained in a building's List Entry, its List Entry number is cited.

<https://portal.historicenvironment.scot/designations>

Statutory list of designated buildings of historic interest in Scotland with detailed individual listing descriptions: references made in the text to information contained in these descriptions include the building reference number, in the form 'HES LB12345'.

www.historicwales.gov.uk

Database for Cadw, including particulars for designated buildings of historic interest in Wales

www.coflein.gov.uk

Database for the National Monuments Record for Wales

www.heritage.org.nz/the-list : Heritage New Zealand – Pouhere Taonga: New Zealand Heritage List.

- Entry for Westoe, List no.156

www.dia.ie : *Dictionary of Irish Architects* [accessed 12 February 2014]

- Entries for: Thomas Duff
John Hargrave
Robert Mallet

www.scottisharchitects.org.uk : *Dictionary of Scottish Architects* [accessed 20 October 2014]

- Entries for: Andrew Heiton jnr.
George Penrose Kennedy
Edward Buckton Lamb

www.findmypast.co.uk

Digitised and transcribed Census Returns 1841-1911

www.riba.sirsdywix.net.uk/uhtbit/webcat

RIBA Collections online catalogue portal, accessed through www.architecture.com

11. Digitised image banks

www.imagesofengland.org.uk

Database of Historic England photographs of listed buildings in England, together with their listing descriptions, under unique reference numbers. These numbers, which differ from their List Entry number, are cited in the text as 'IoE 123456'.

www.architecture.com

Database of digitised images from the collections of the Royal Institute of British Architects, under the name RIBApix. In addition to their RIBA Collection reference number, images in this bank therefore also have a RIBApix number for ease of access to the image.

www.archiseek.com

Website covering aspects of Irish architecture which includes an image database of buildings in both the Republic of Ireland and Northern Ireland:

- Coloured photograph of garden elevation of Lissan Rectory, Co. Tyrone (undated) [accessed 15 February 2014]

www.britainfromabove.org

'Aerofilms' archive of annotated aerial photographs of Great Britain, 1919-1953. Photographs of:

- Ladbrooke Grove, west London in 1921, Image no. EPW 005640
- Devon Square, Newton Abbot in 1932, Image no. EPW 039820

12. Other online sources

www.oxforddnb.com

Oxford Dictionary of National Biography: Online version, accessed via the Bodleian Libraries, cited in the text as 'ODNB'. Entries for the following individuals have been cited:

Edmund Aikin, by Annette Peach
Thomas Talbot Bury, by W.H. Tregellas, rev. Annette Peach
Edward Cressy, by Gordon Goodwin, rev. Diana Cressy Burfield
Thomas Fonnereau, by W.P. Courtney, rev. Clare Loughlin-Chow
Edward Kemp, by Janet Waymark

www.anb.org

American National Biography Online

Entry for Alexander Jackson Downing, by David Schuyler [accessed 12 May 2016]

www.adb.anu.edu.au

Australian Dictionary of Biography, published by the National Centre for Biography, Australian National University, Melbourne, online version [accessed 3 March 2016].

Entries for: William Archer, by G.T. Stilwell
James Blackburn, by Harley Preston
Henry Hellyer, by Shirley M. Eldershaw
Sir George Strickland Kingston, by Jean Prest
John Verge, by Harley Preston

www.environment.nsw.gov.au

New South Wales State Heritage Register

Entry for Newington House: File S90/03638/3; database no. 50436

www.treccani.it

Dizionario Biografico Italiano

Entry for Ferdinando Morozzi [accessed 17 September 2017].

<https://historicengland.org.uk/images-books/publications>

Historic England Listing Selection Guides: *Domestic 3: Suburban and Country Houses* (October 2011)

www.queenvictoriasjournals.org

Journals of Queen Victoria, ©Bodleian Libraries and the Royal Archives: Princess Beatrice's copies: Vol.16, entry for 30 August 1843 and Vol. 42, entry for 11 August 1856

www.royalcollection.org.uk/exhibitions/victoria-albert-love/symposium

Geoffrey Tyack, 'Osborne and Balmoral', in *Victoria and Albert: Art and Love*, Essays from a Study Day, National Gallery, London, June 2010. (Royal Collection Trust, 2012)

www.tate.org.uk/art/research-publications/jmw-turner/project-overview-r1109225

David Blayney Brown, 'Project Overview', December 2012, in David Blayney Brown (ed.), *J.M.W. Turner: Sketchbooks, Drawings and Watercolours*, Tate Research Publication, December 2012. Digital catalogue of complete collection of J.M.W. Turner's works on paper held by the Tate Gallery.

www.giustiniani.info/casina.html

History of the Casina Giustiniani, viale David Lubin, 4, parco di Villa Borghese, Rome

www.geograph.org.uk

Database of modern topographical photographs from various contributors