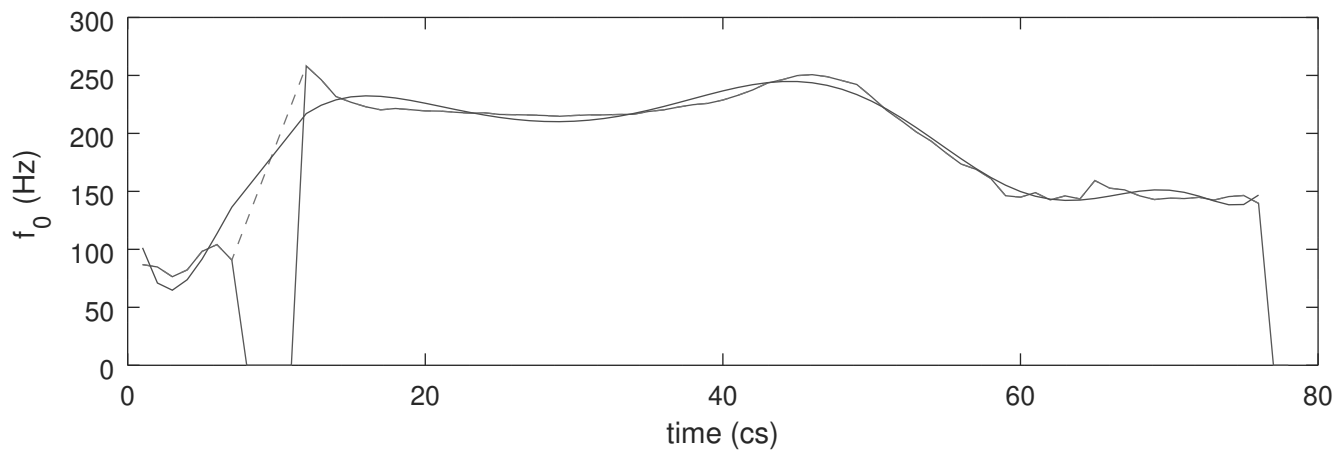
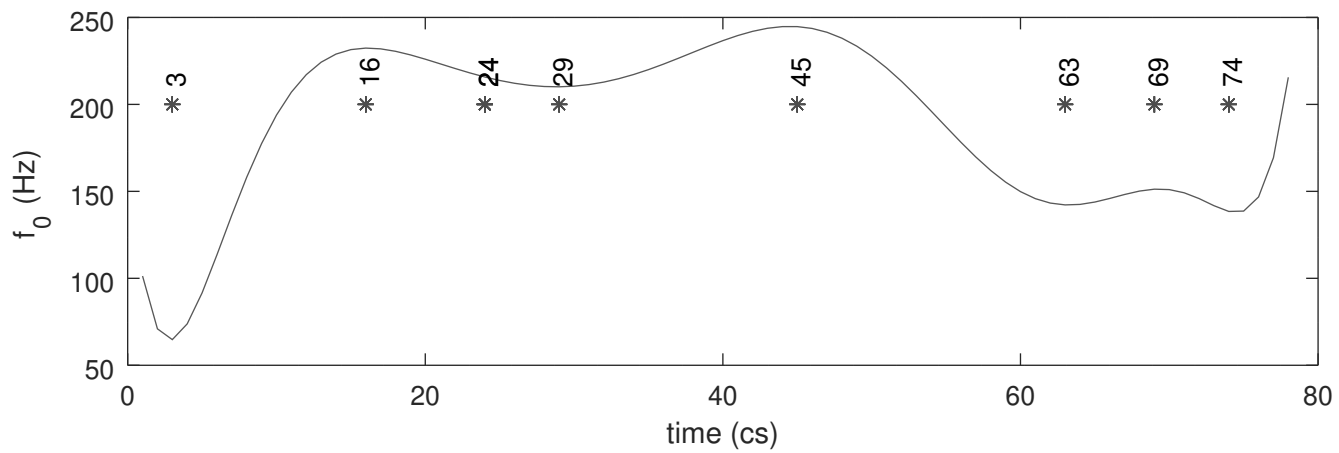


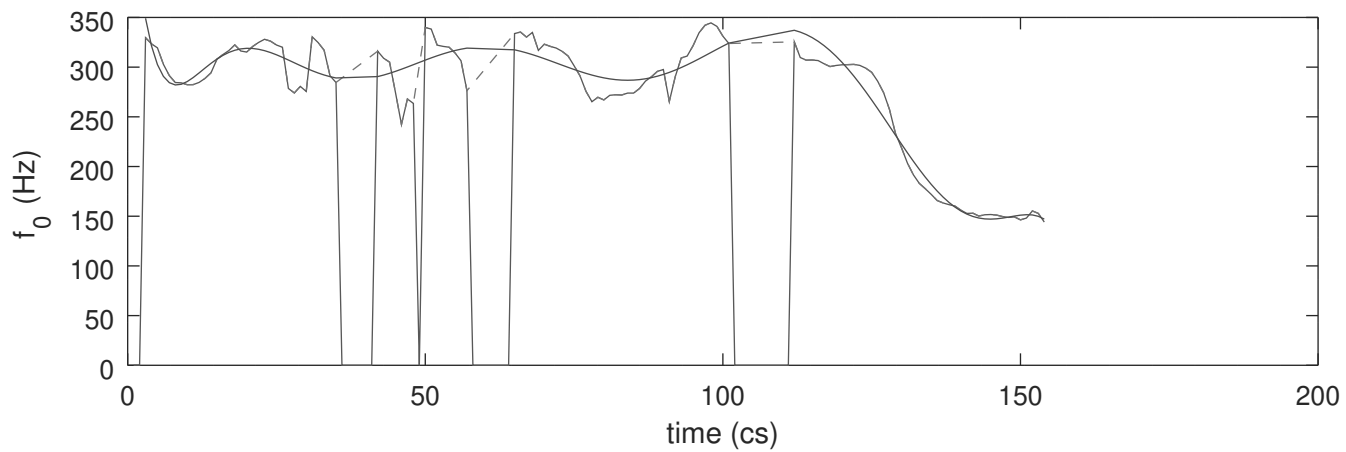
alpha989_07_06_15_d16.wav.f0.txt



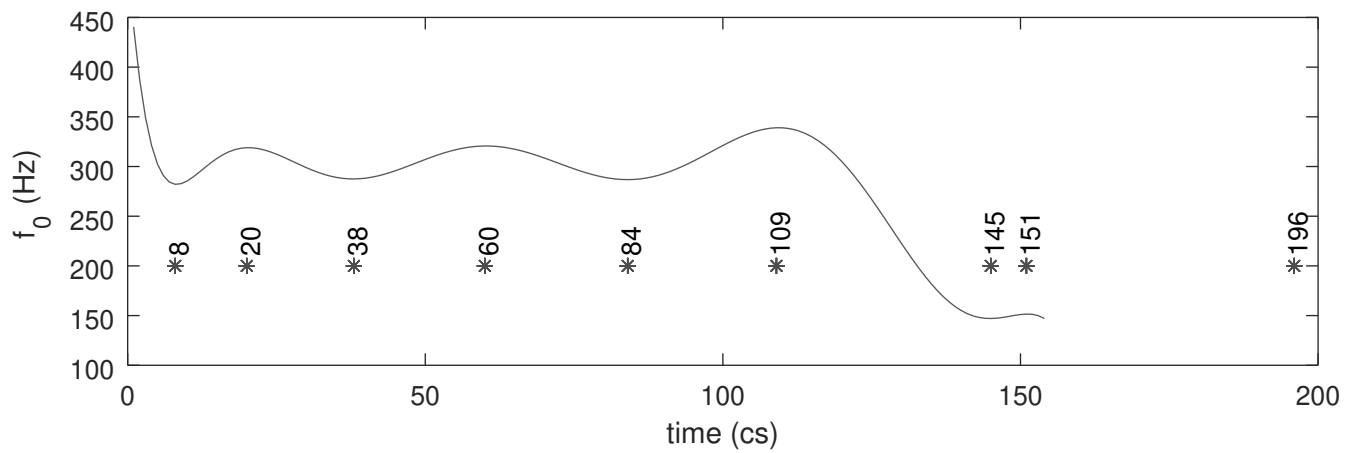
Modelled f_0 , maxima and minima



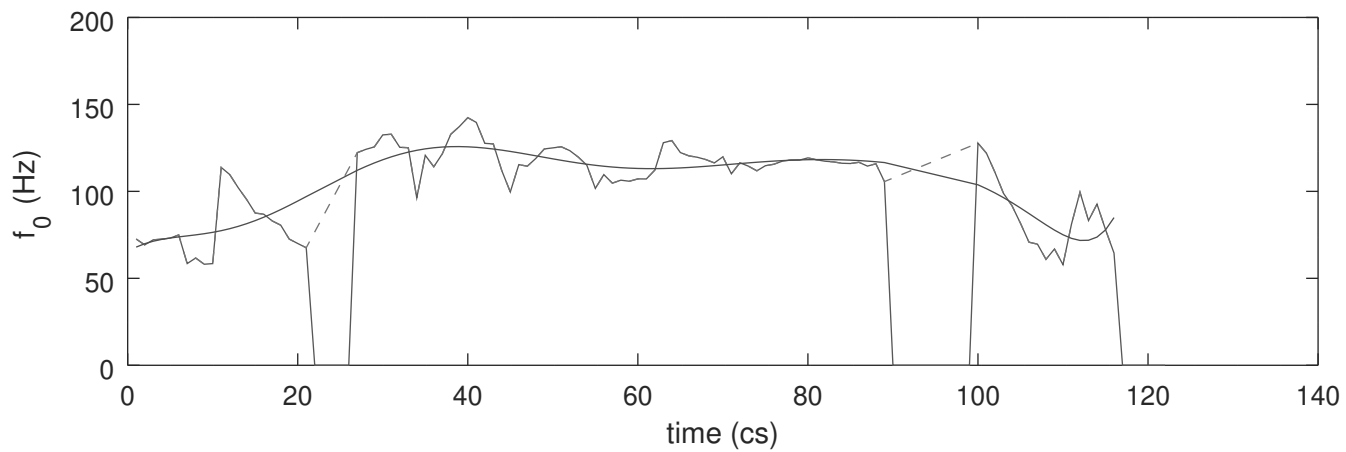
alpha989_07_06_15_d18.wav.f0.txt



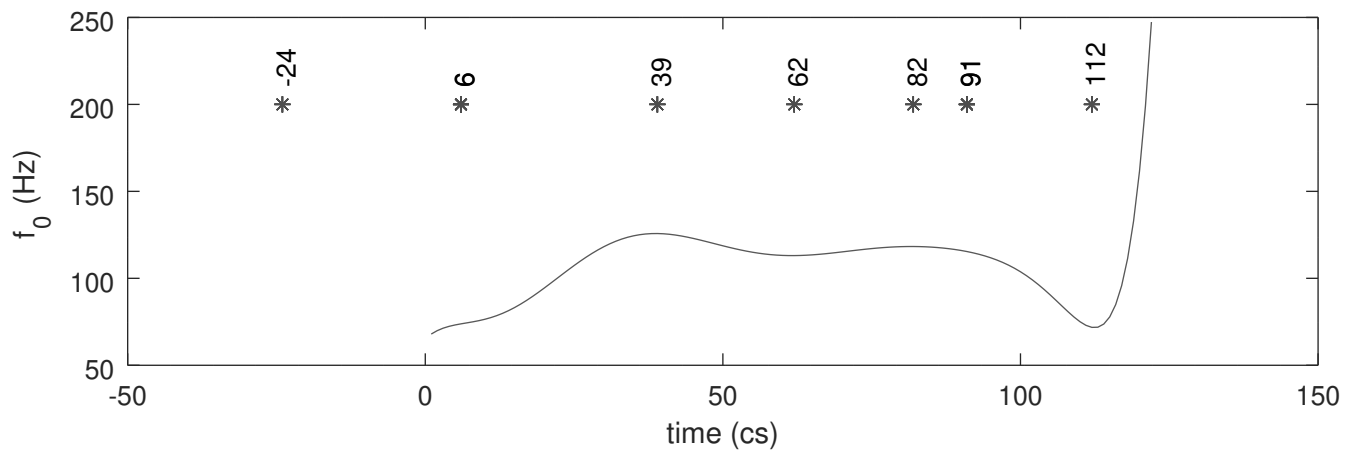
Modelled f_0 , maxima and minima



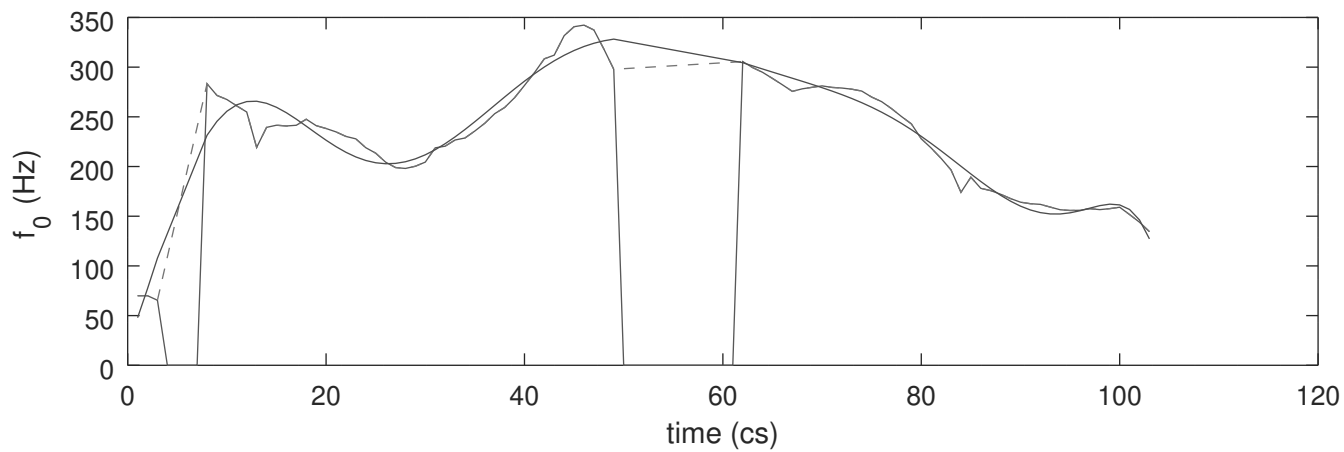
alpha989_07_06_15_d19.wav.f0.txt



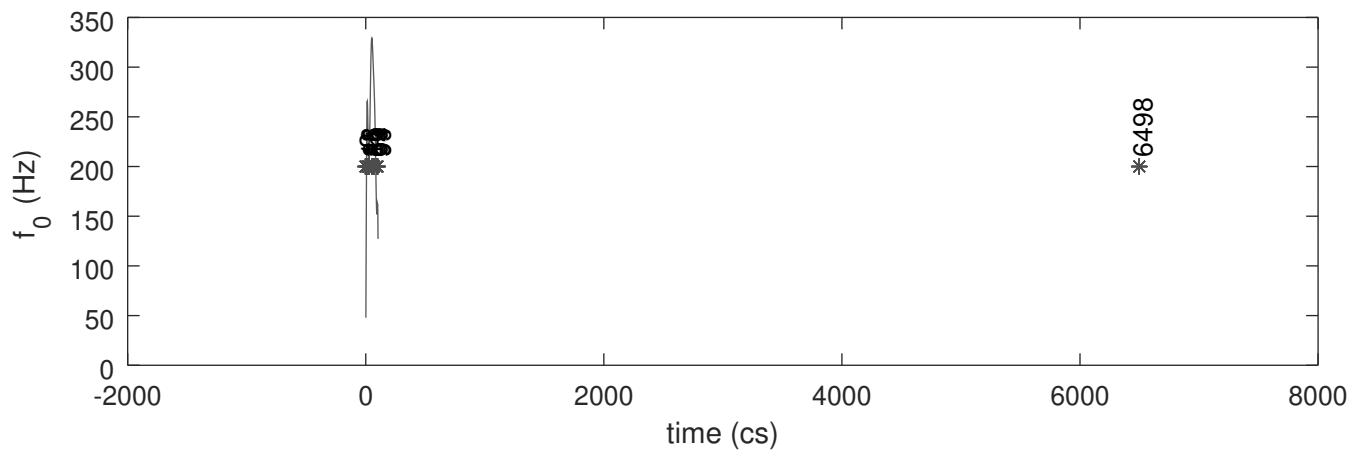
Modelled f_0 , maxima and minima



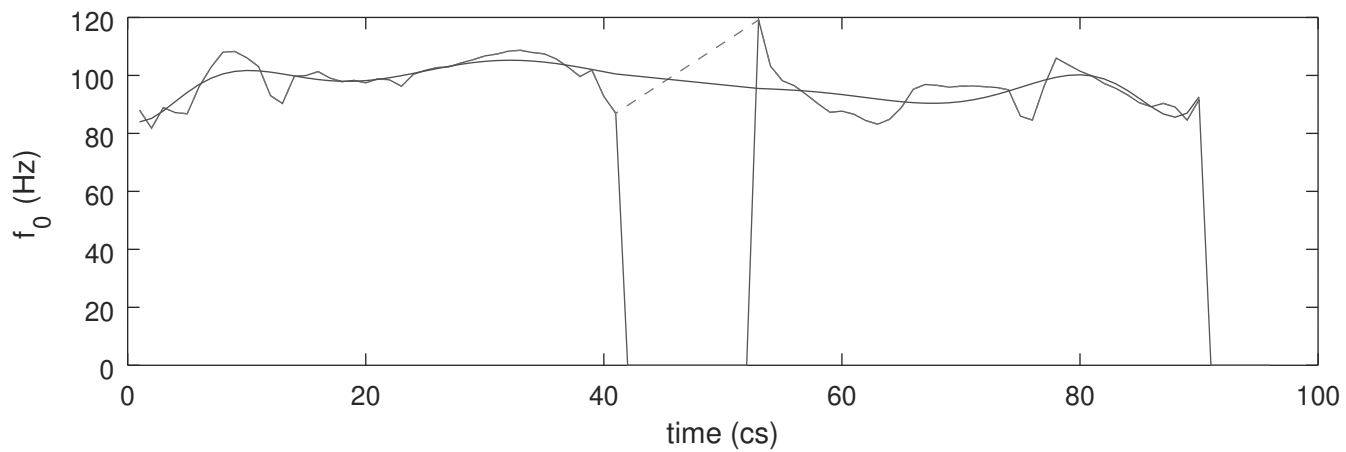
alpha989_07_06_15_d1.wav.f0.txt



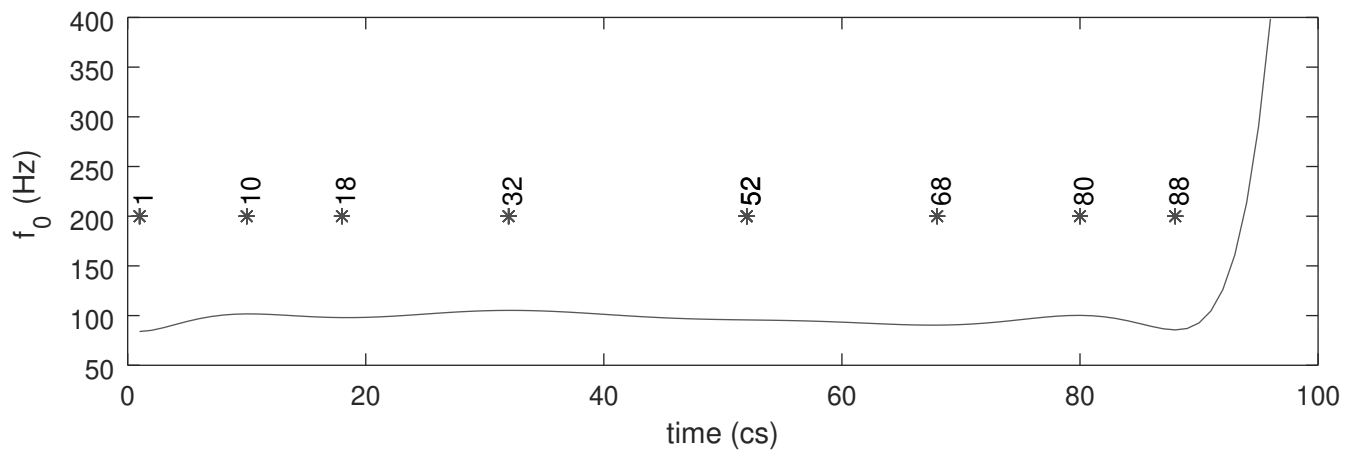
Modelled f_0 , maxima and minima



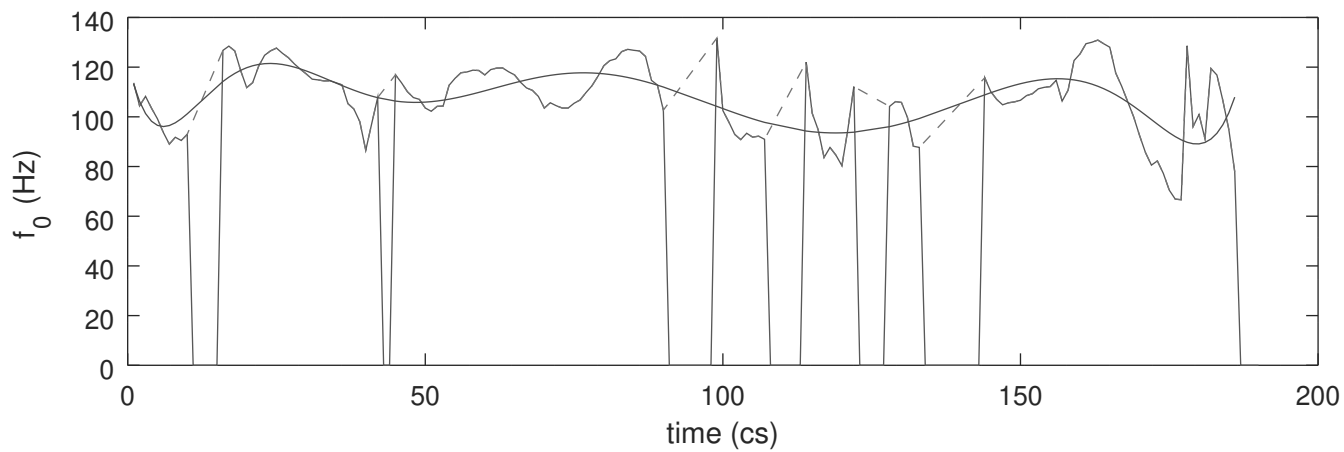
alpha989_07_06_15_d20.wav.f0.txt



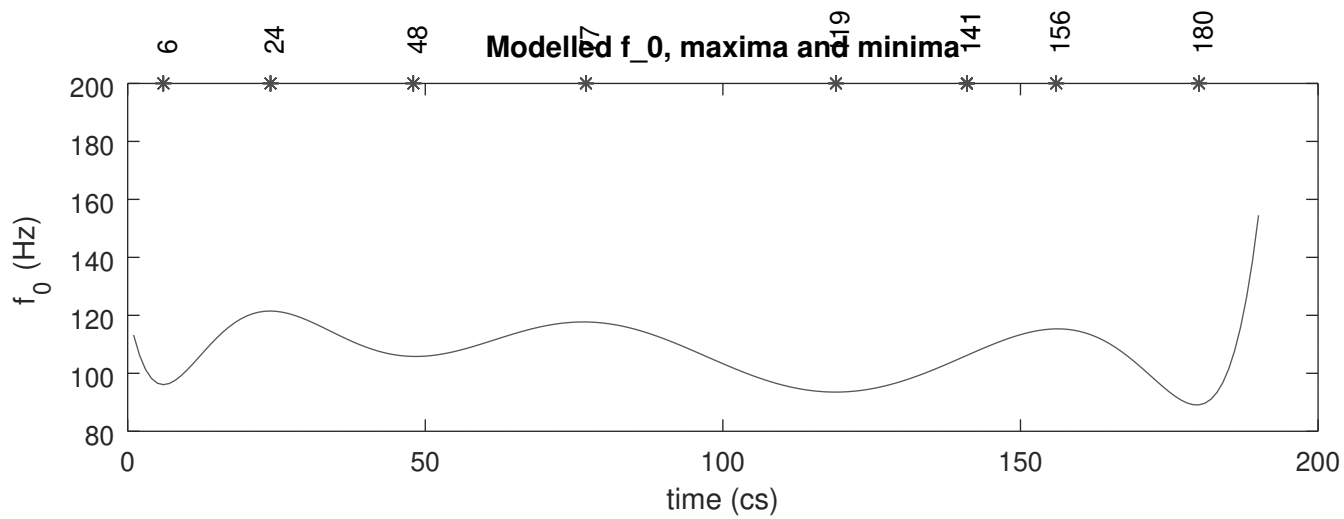
Modelled f_0 , maxima and minima



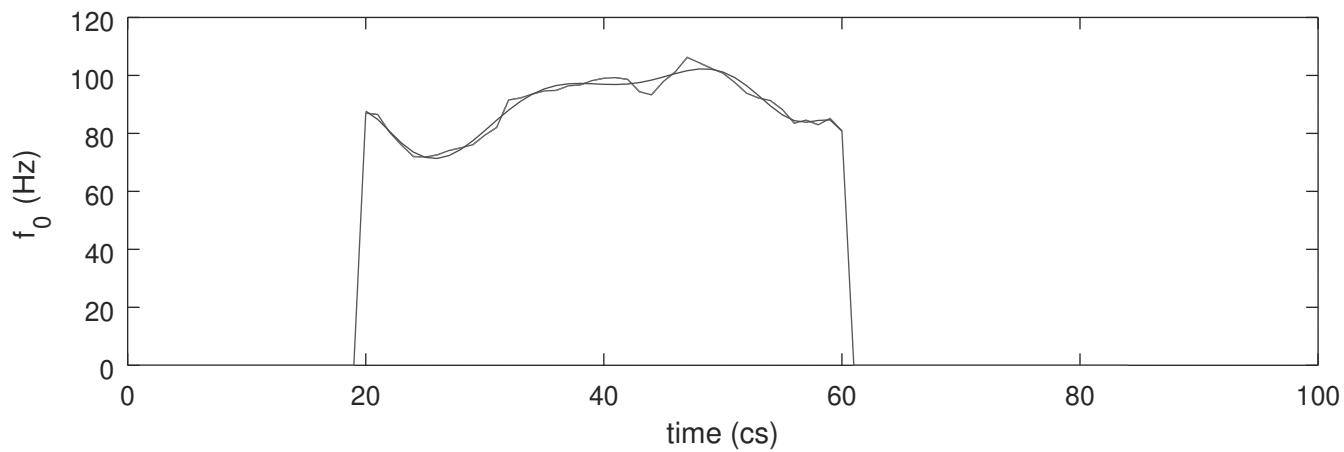
alpha989_07_06_15_d21.wav.f0.txt



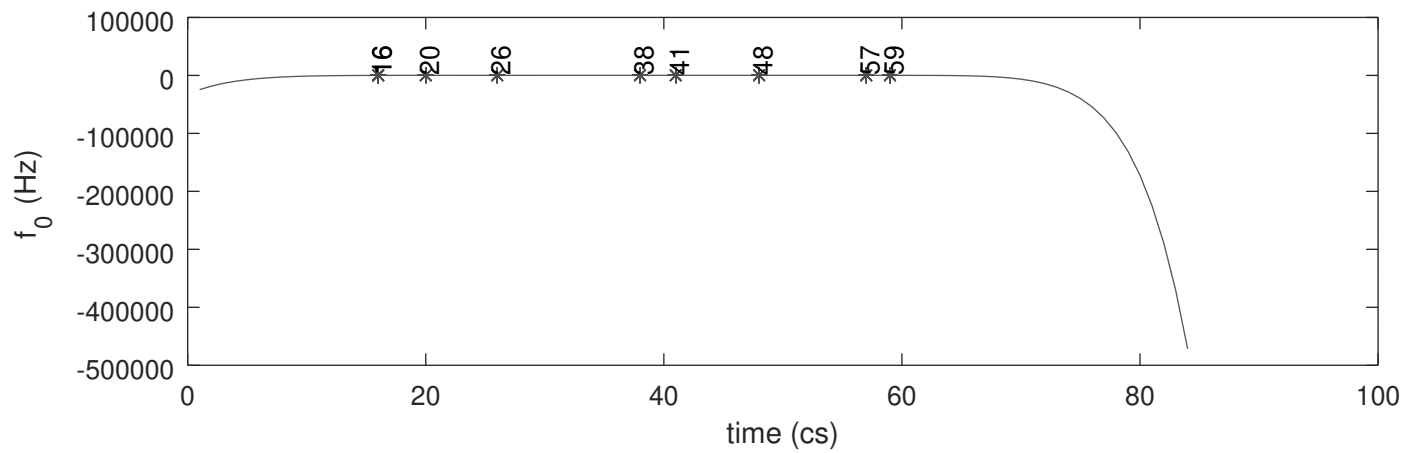
Modelled f_0 , maxima and minima



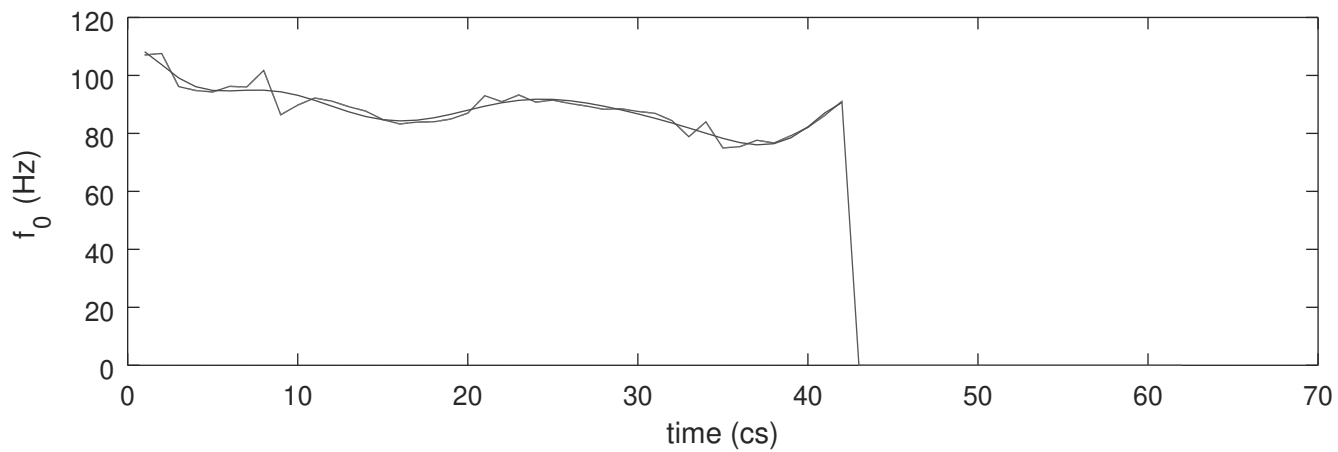
alpha989_07_06_15_d22.wav.f0.txt



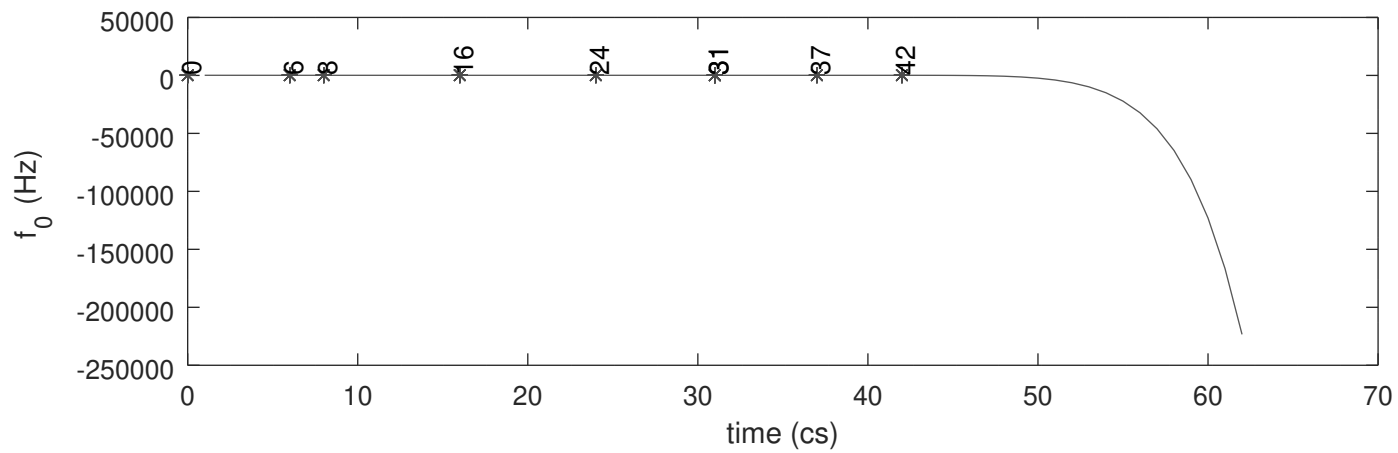
Modelled f_0 , maxima and minima



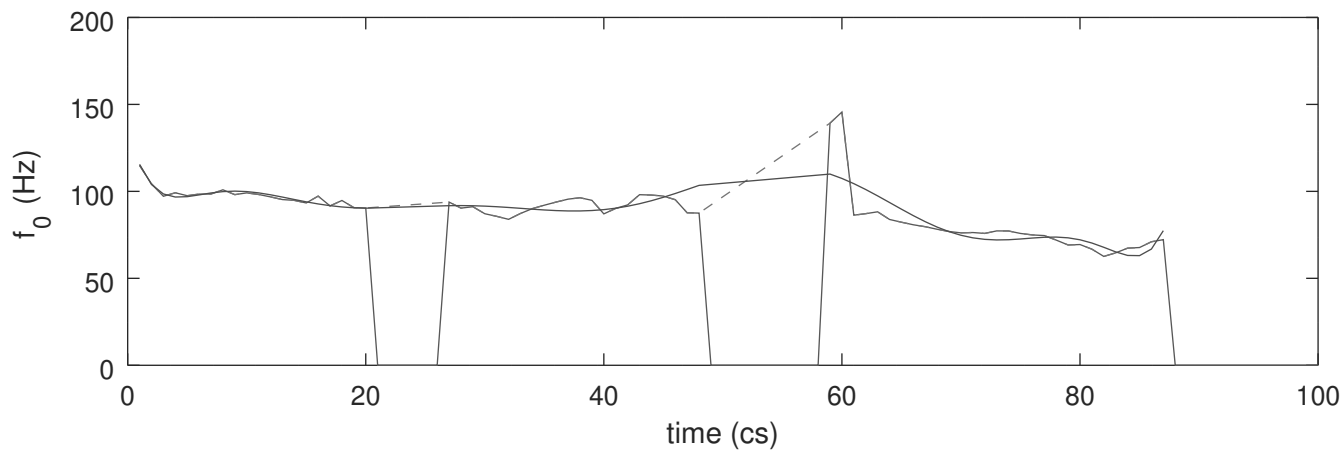
alpha989_07_06_15_d2.wav.f0.txt



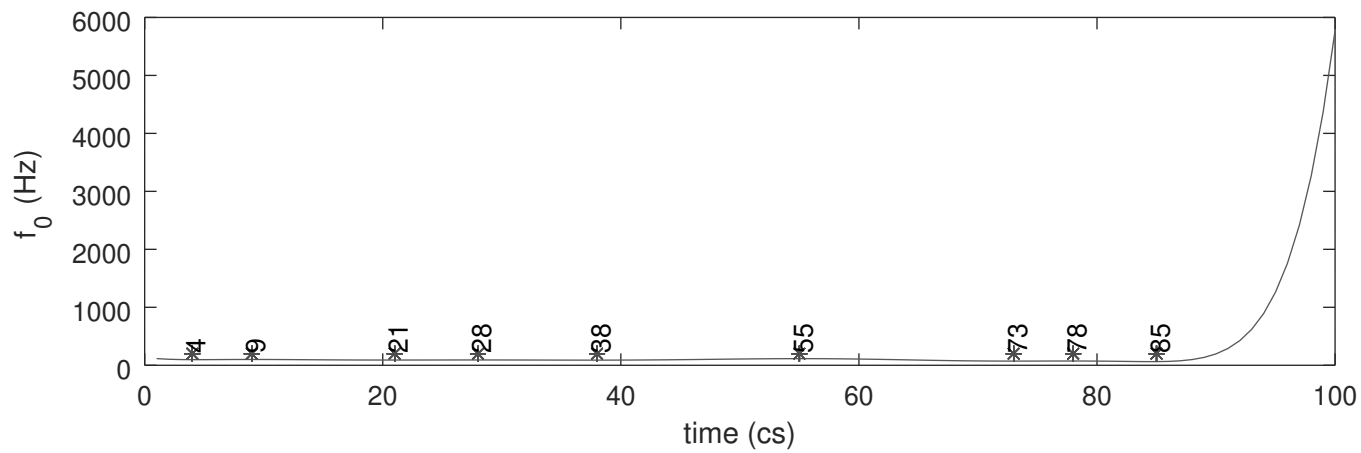
Modelled f_0 , maxima and minima



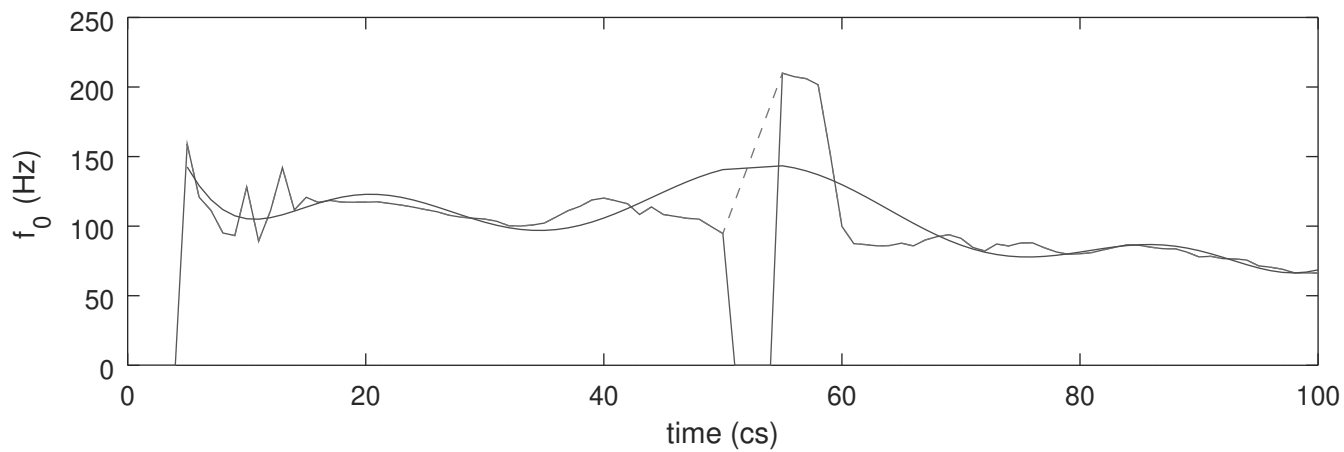
alpha989_07_06_15_d3.wav.f0.txt



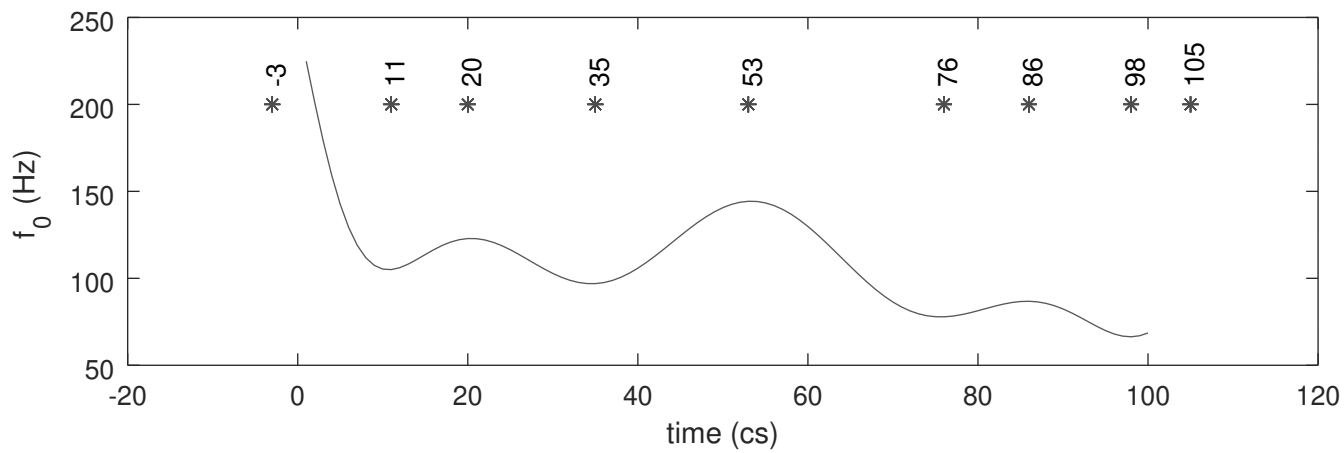
Modelled f_0 , maxima and minima



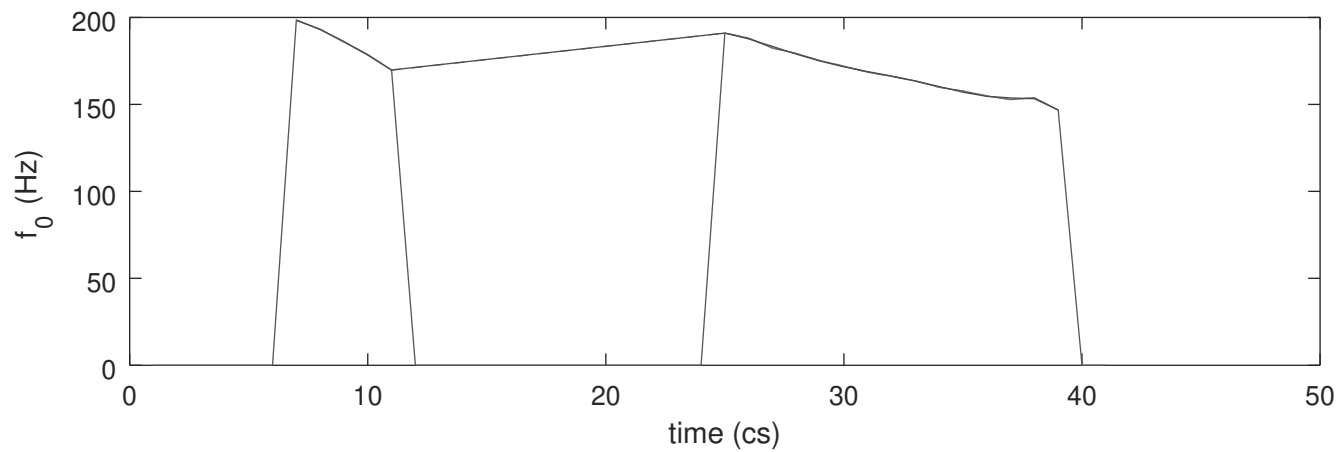
alpha989_07_06_15_d5.wav.f0.txt



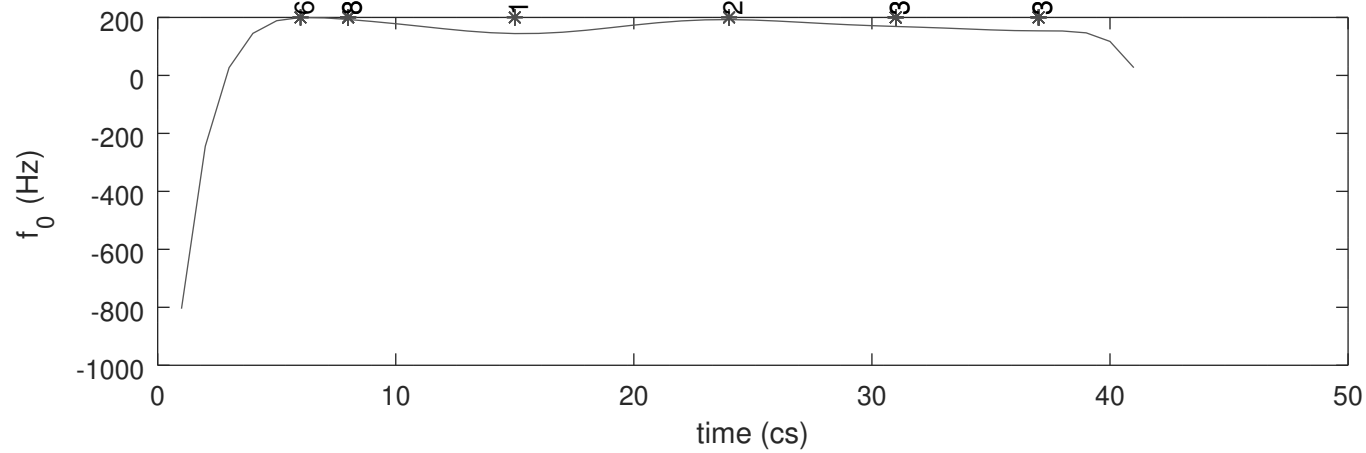
Modelled f_0 , maxima and minima



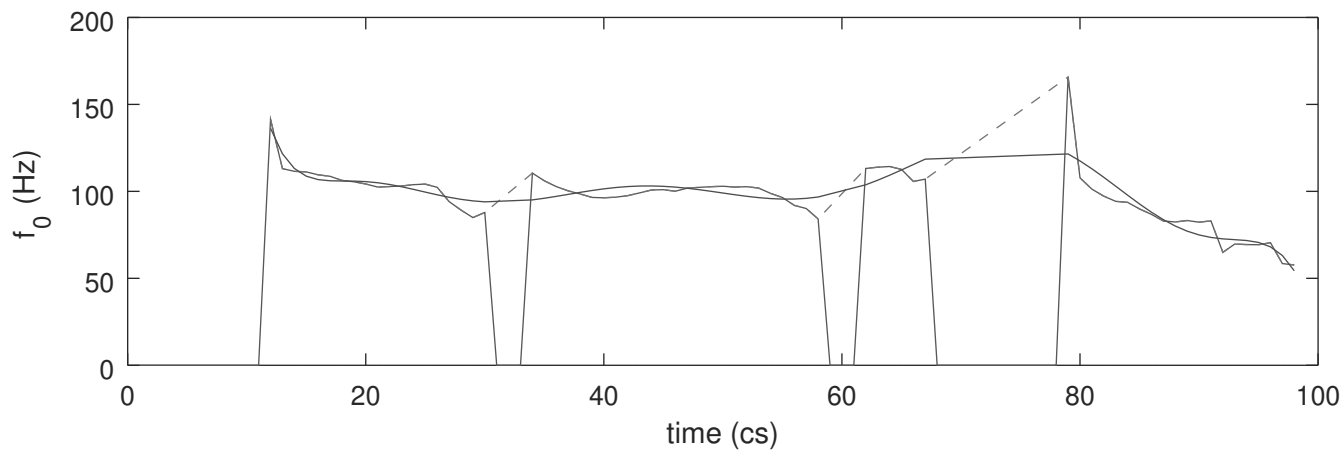
alpha989_07_06_15_d7.wav.f0.txt



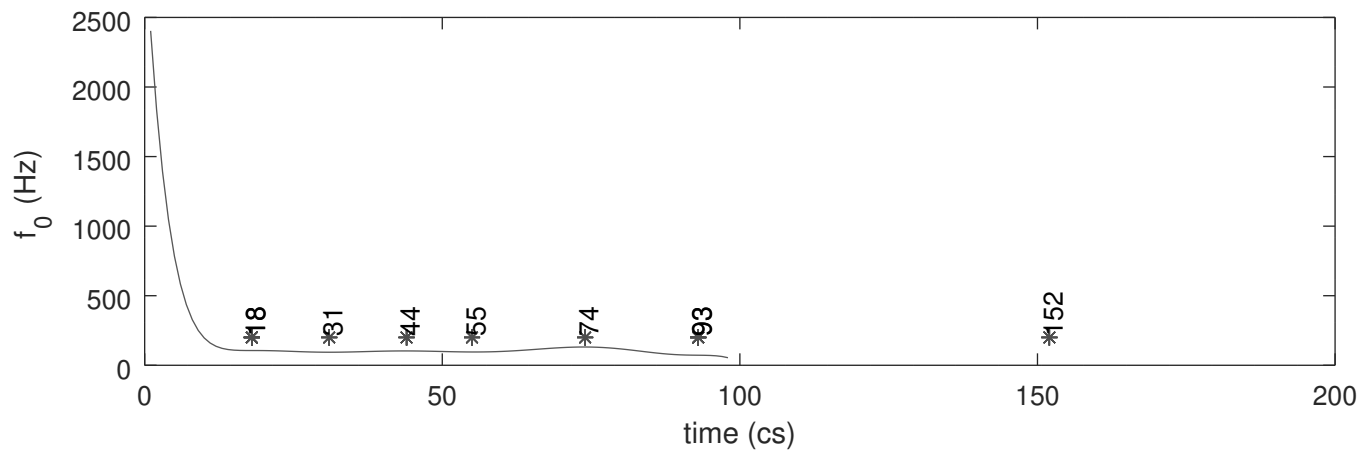
Modelled f_0 , maxima and minima



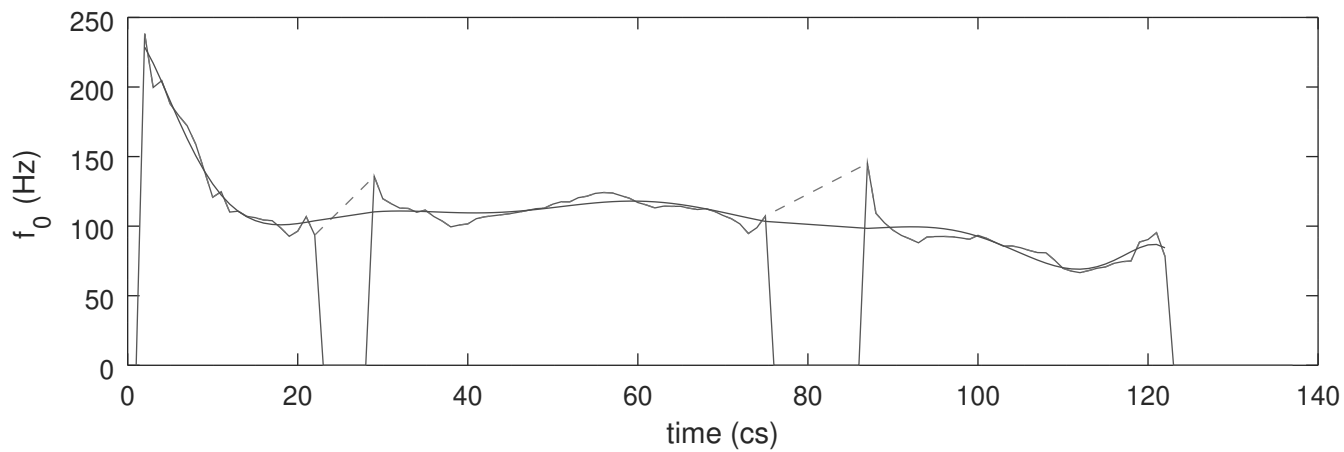
alpha989_07_06_15_d8.wav.f0.txt



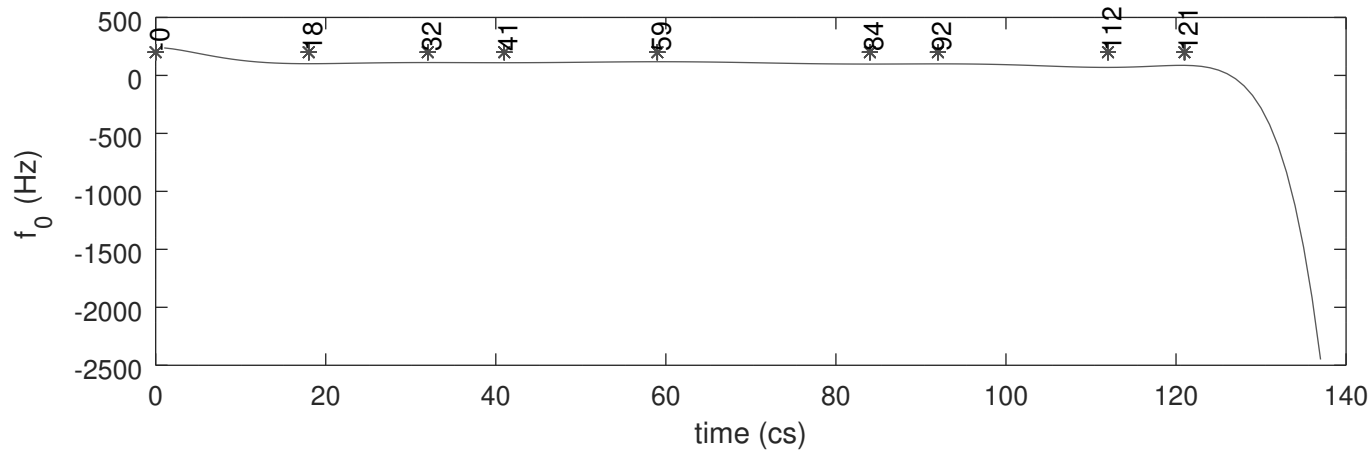
Modelled f_0 , maxima and minima



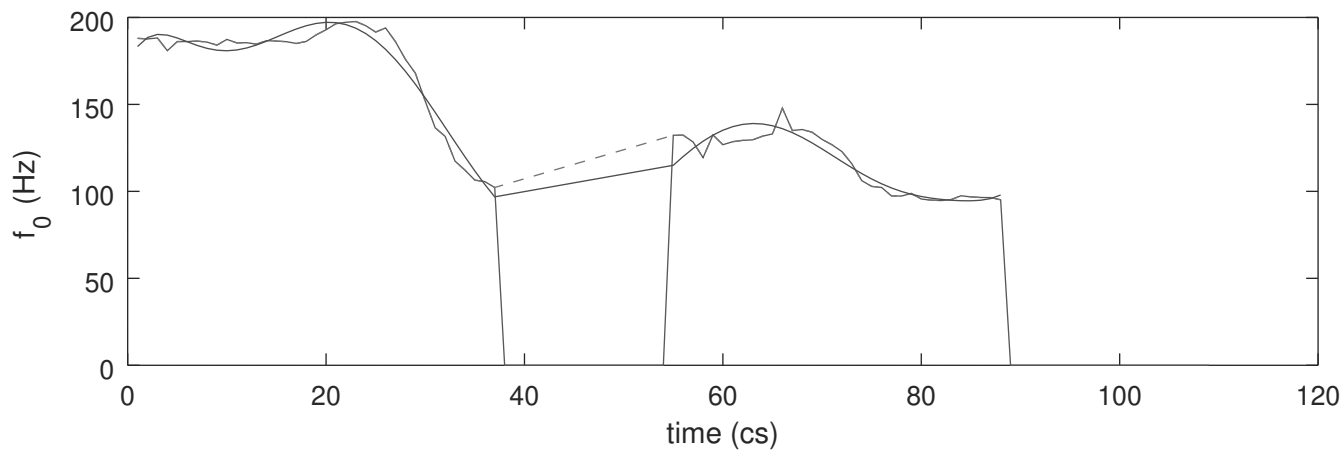
alpha989_07_06_15_d9.wav.f0.txt



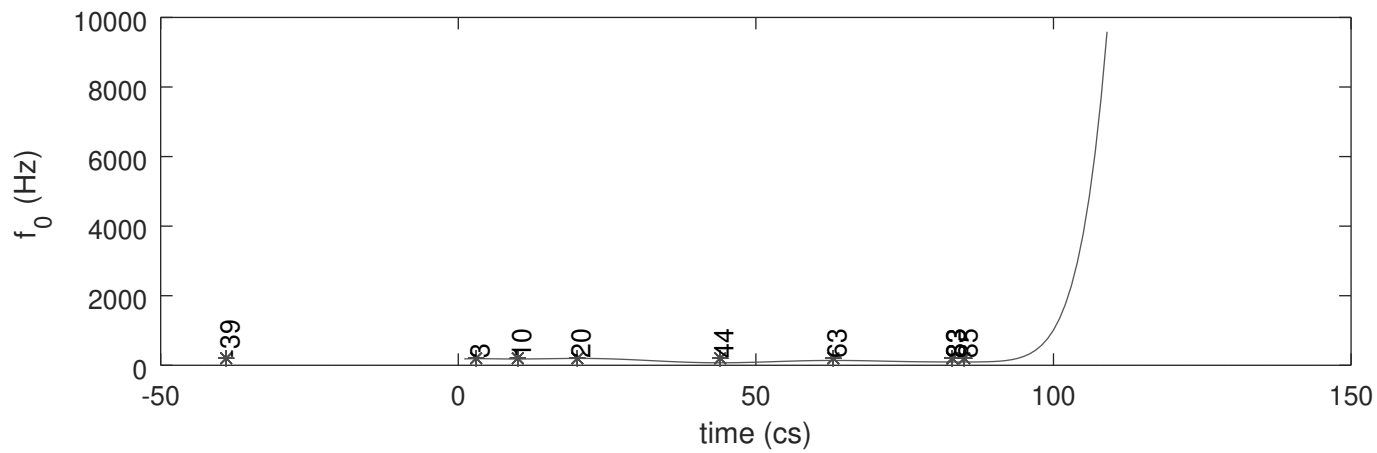
Modelled f_0 , maxima and minima



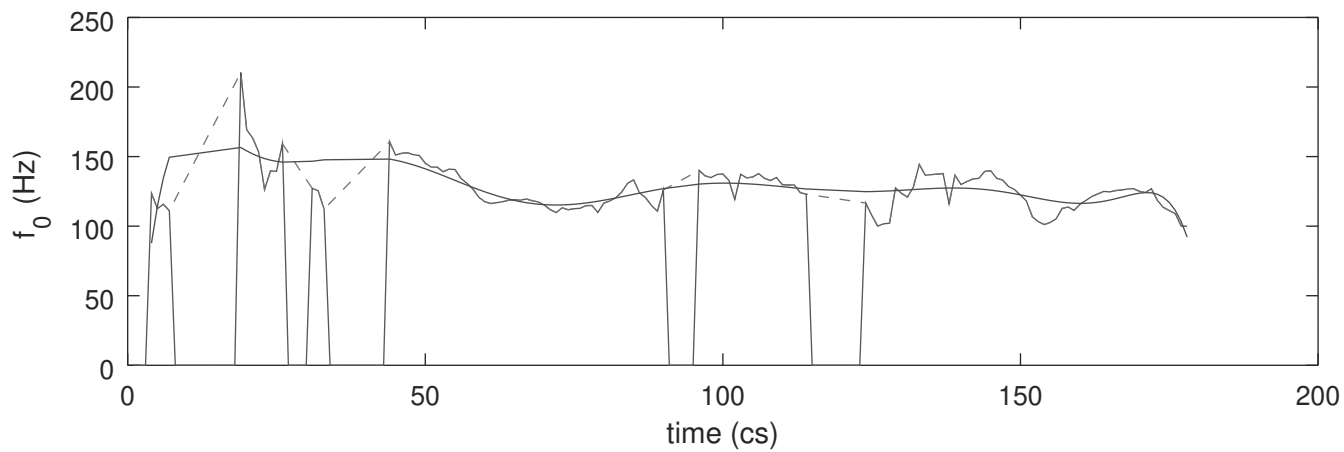
ell_20151207_d10.wav.f0.txt



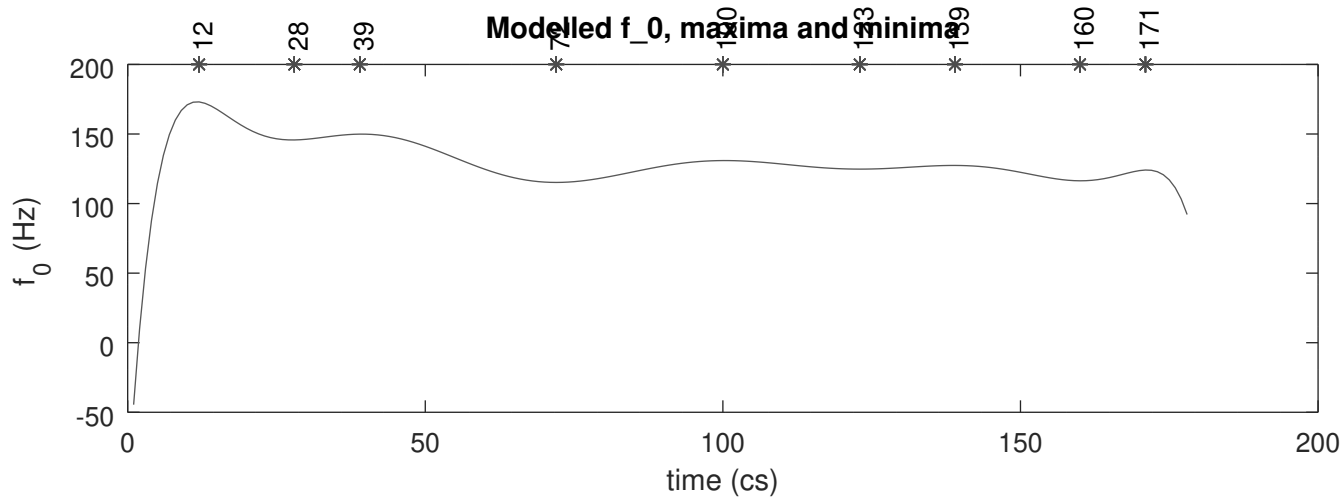
Modelled f_0 , maxima and minima



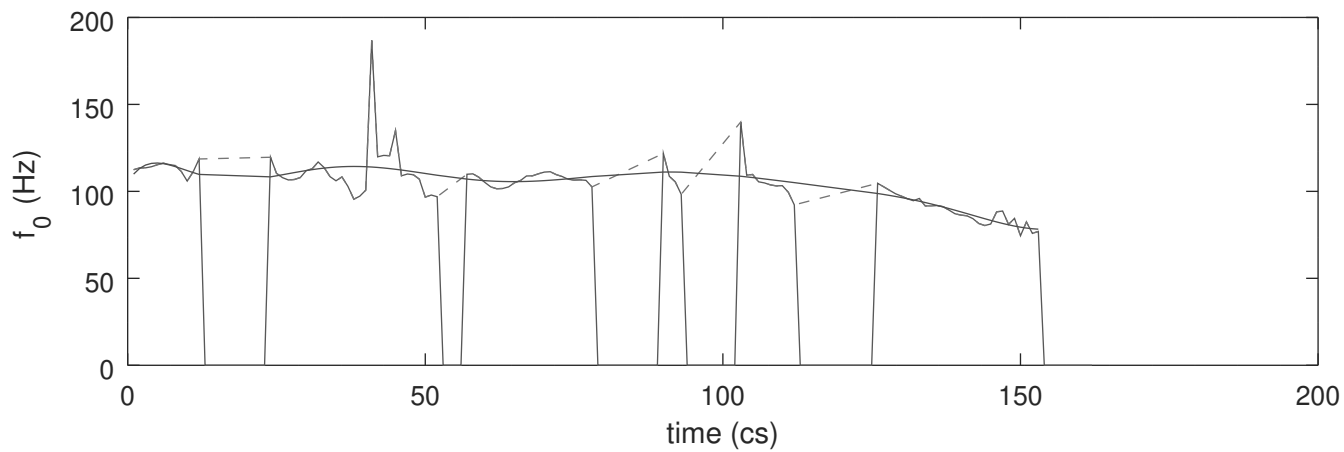
ell_20151207_d12.wav.f0.txt



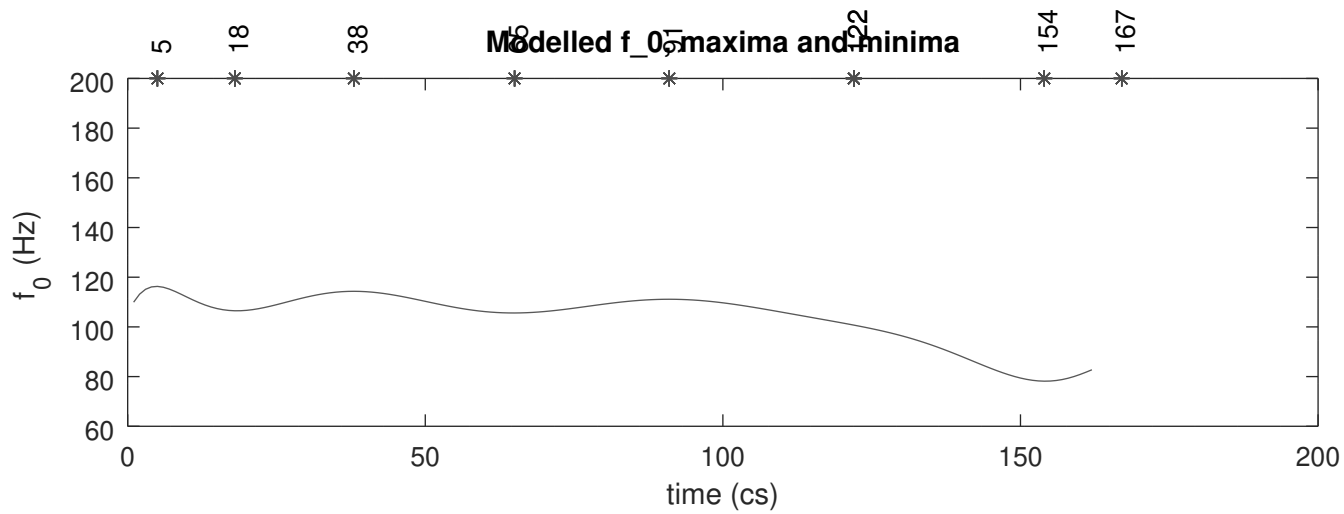
Modelled f_0 , maxima and minima



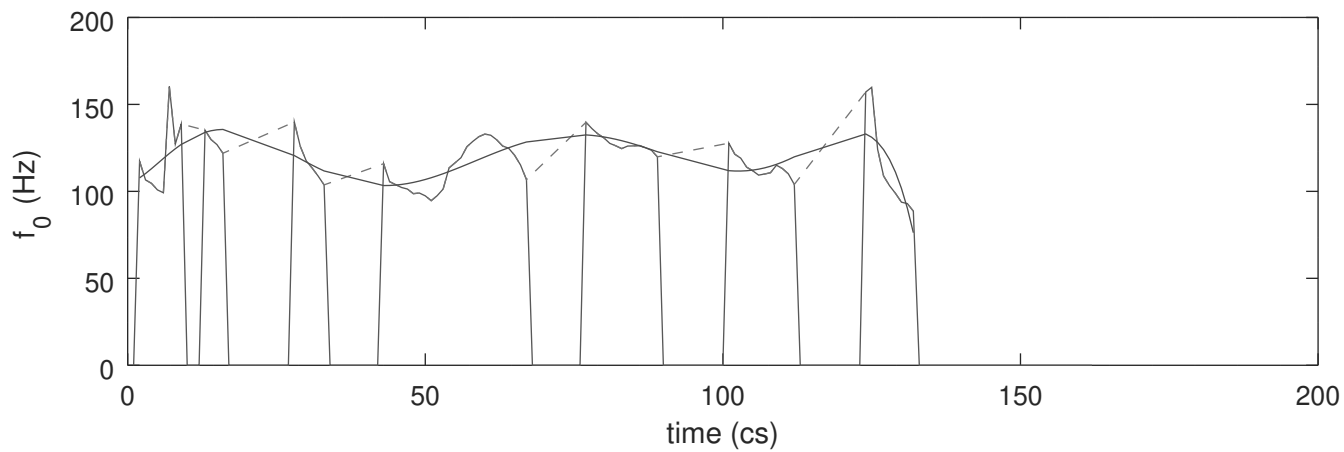
ell_20151207_d15.wav.f0.txt



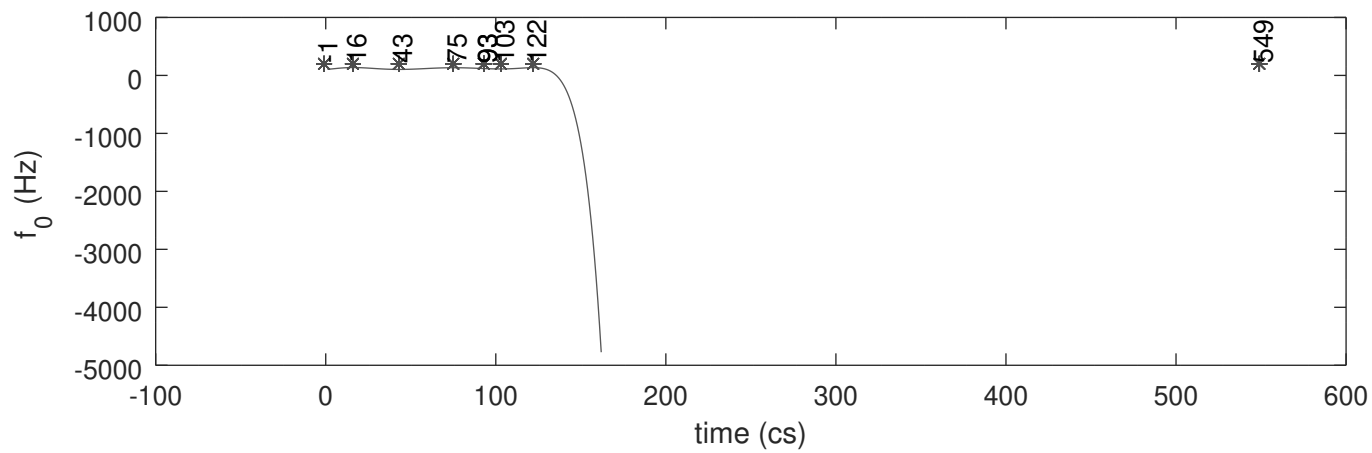
Modelled f_0 maxima and minima



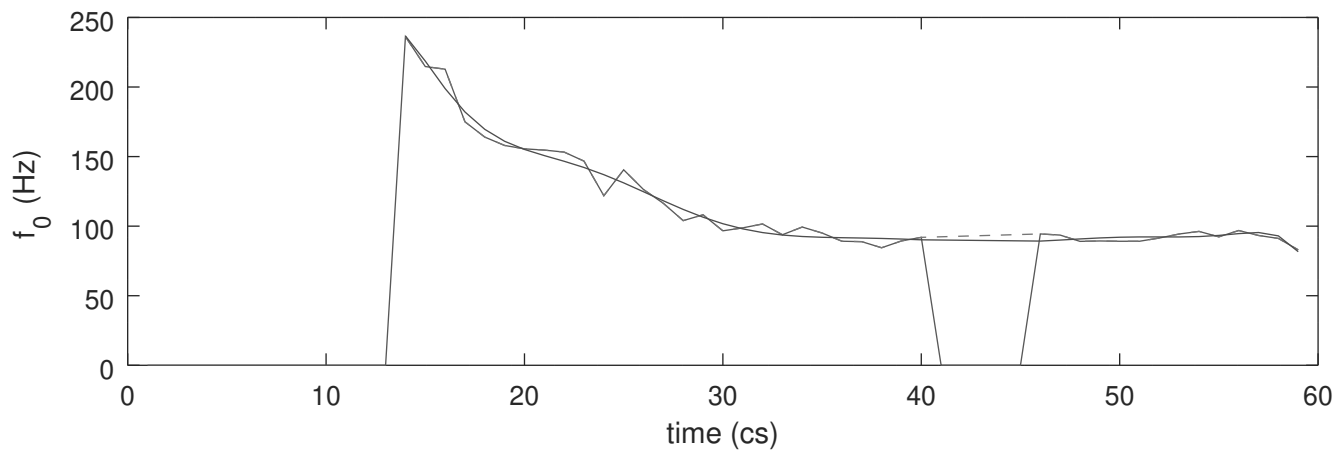
ell_20151207_d17.wav.f0.txt



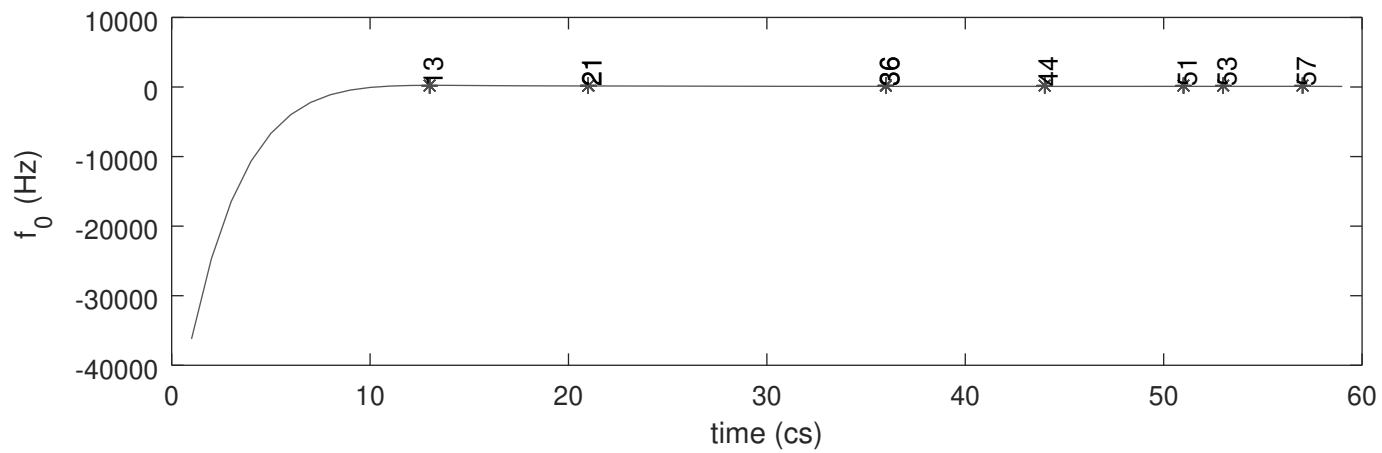
Modelled f_0 , maxima and minima



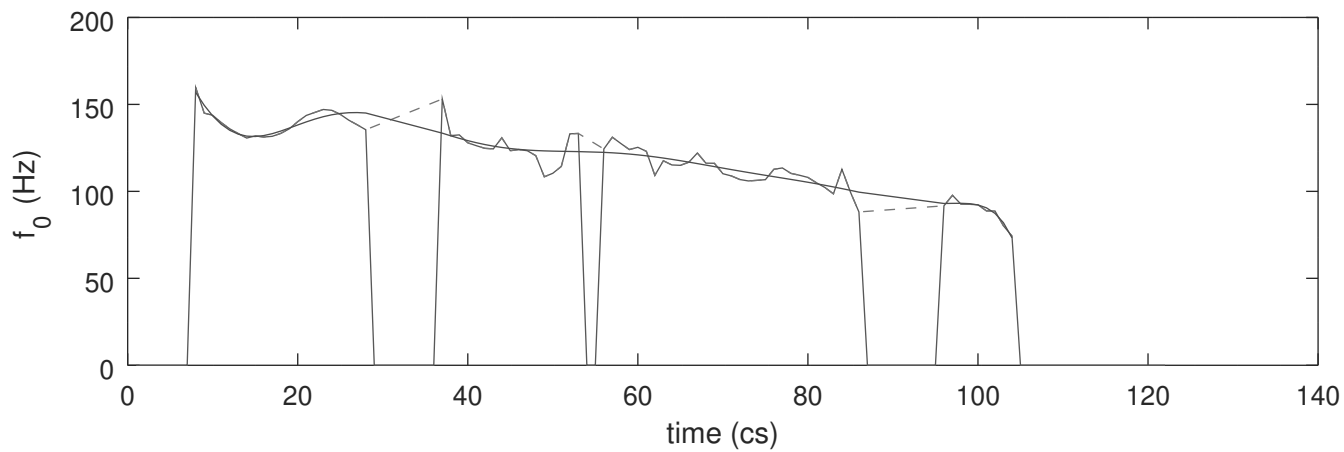
ell_20151207_d20.wav.f0.txt



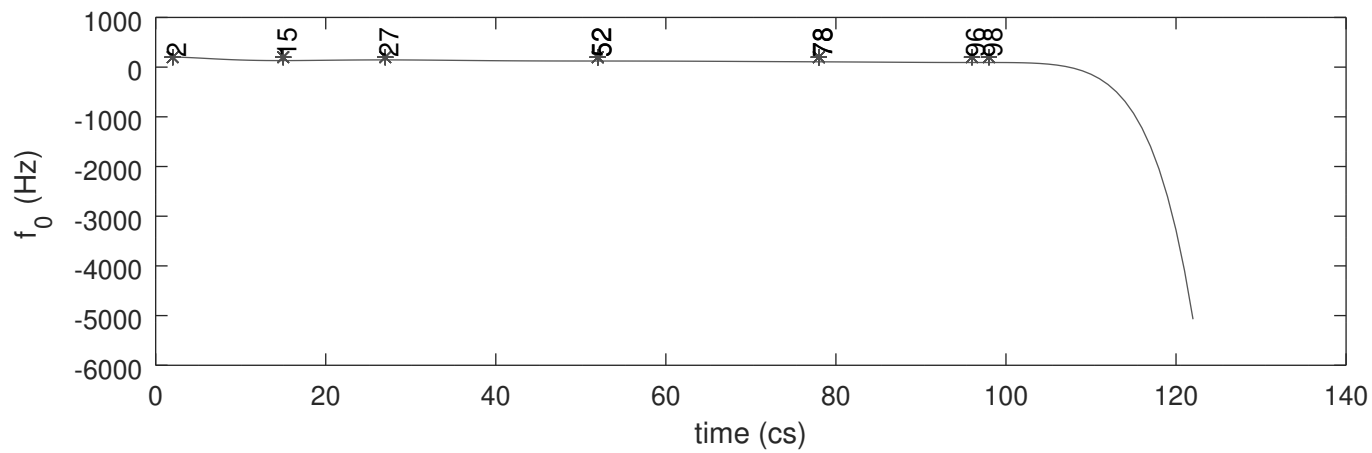
Modelled f_0 , maxima and minima



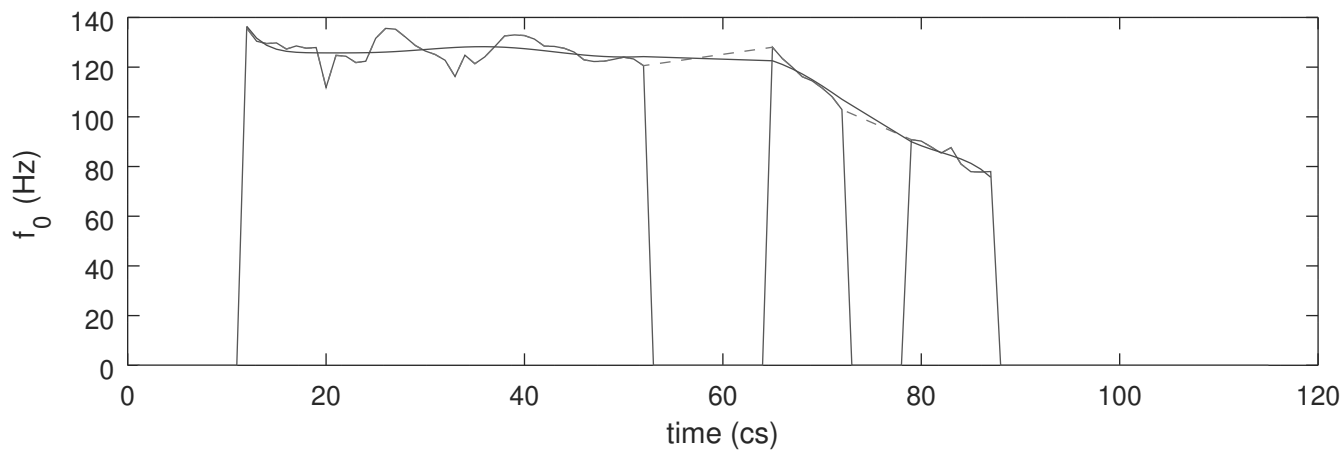
ell_20151207_d21.wav.f0.txt



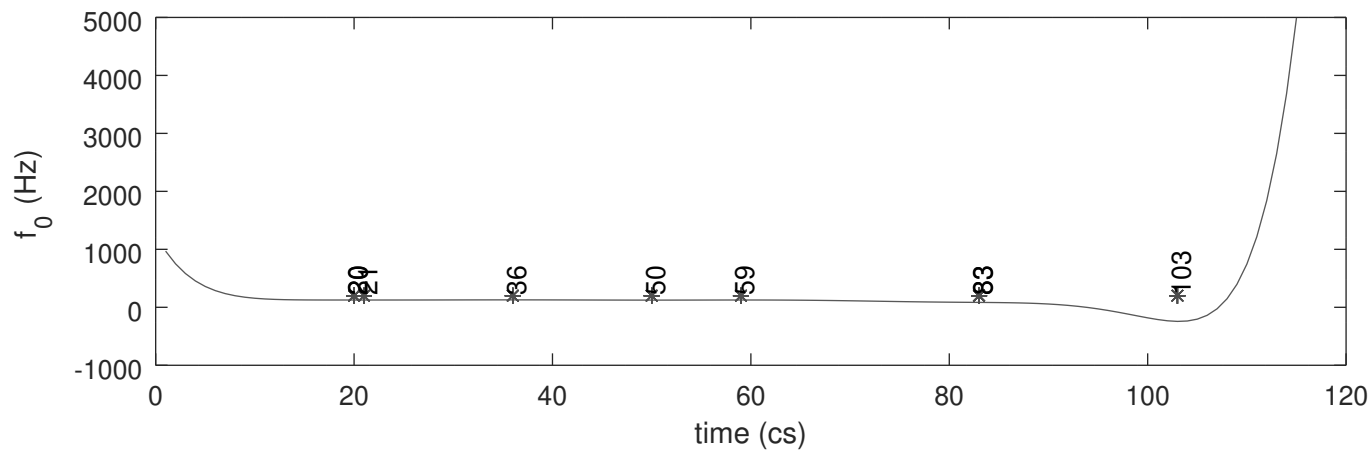
Modelled f_0 , maxima and minima



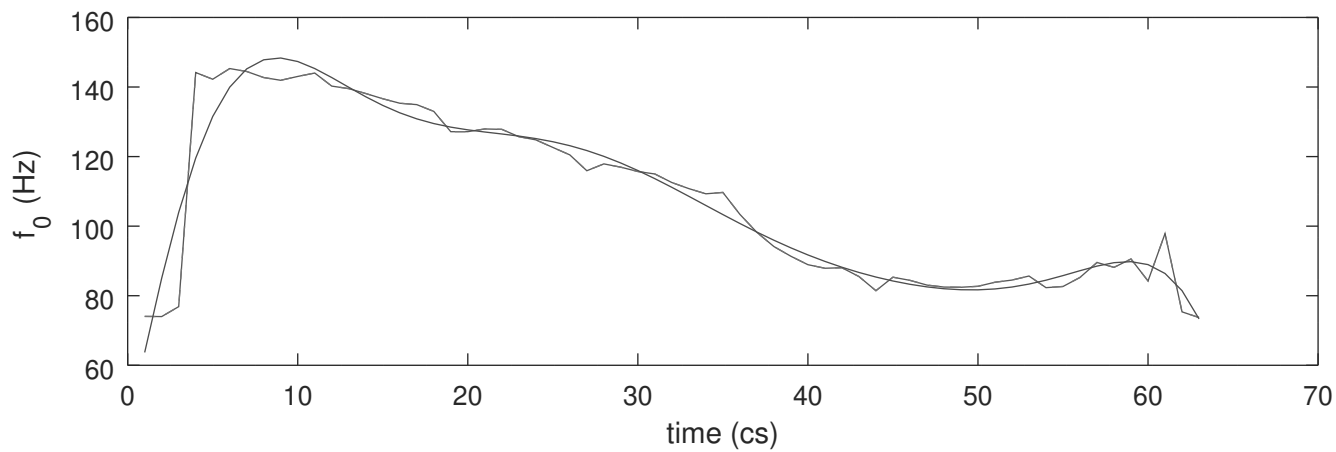
ell_20151207_d22.wav.f0.txt



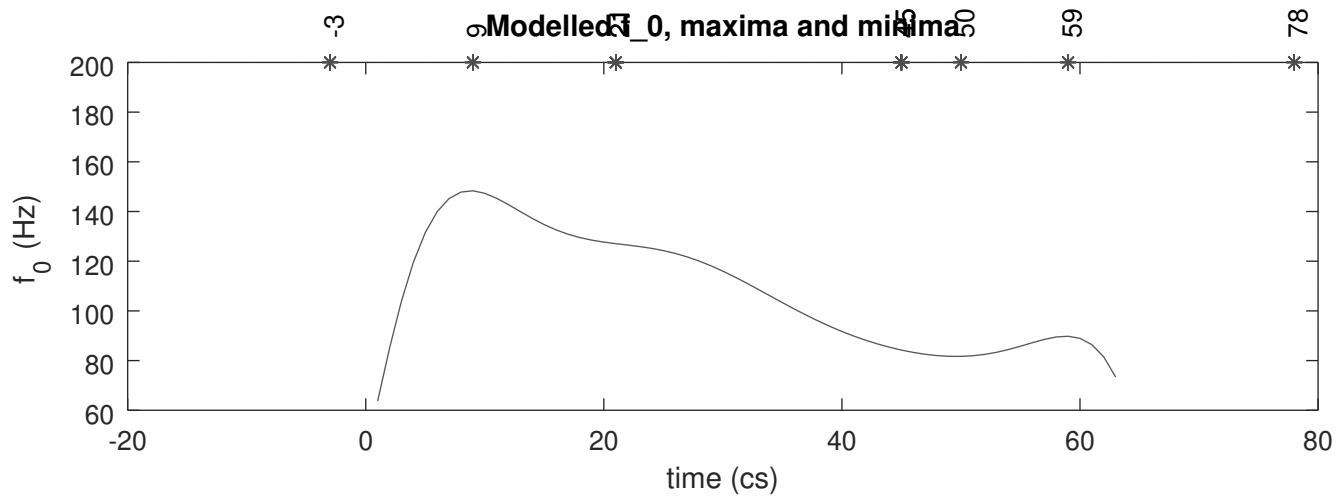
Modelled f_0 , maxima and minima



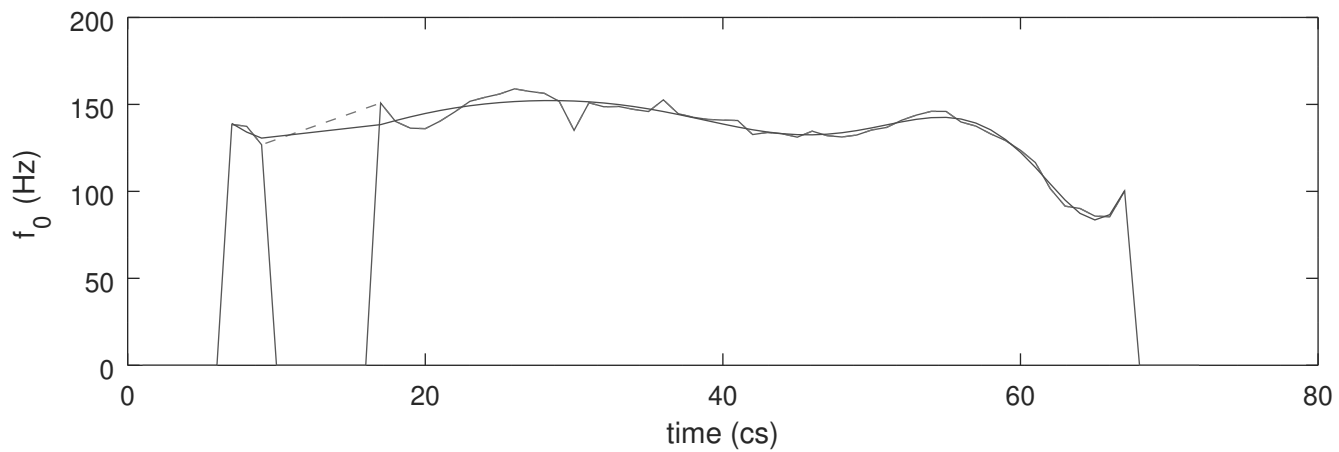
ell_20151207_d27.wav.f0.txt



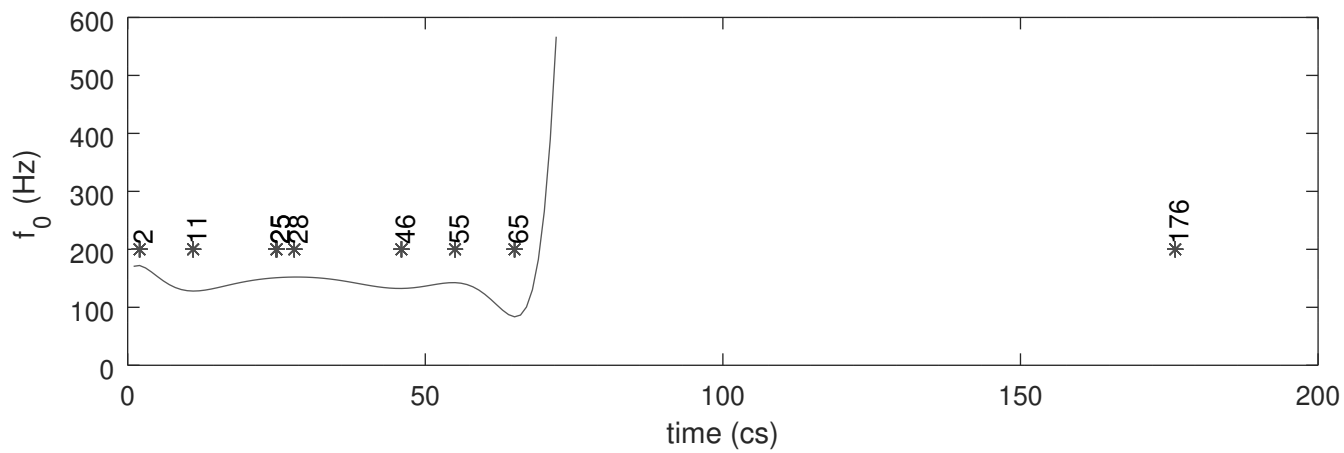
Modelled f_0 , maxima and minima



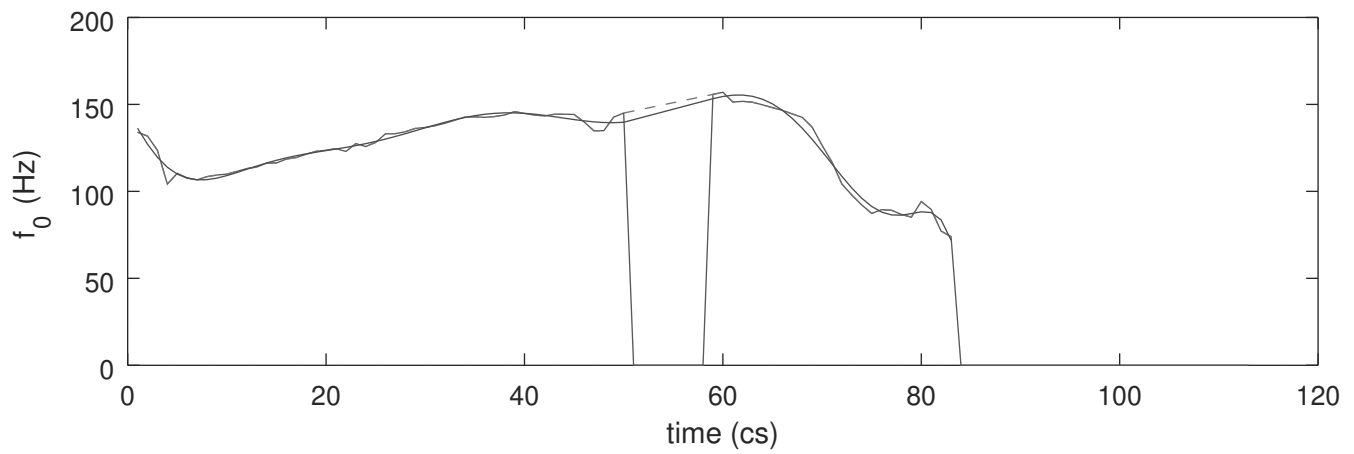
ell_20151207_d29.wav.f0.txt



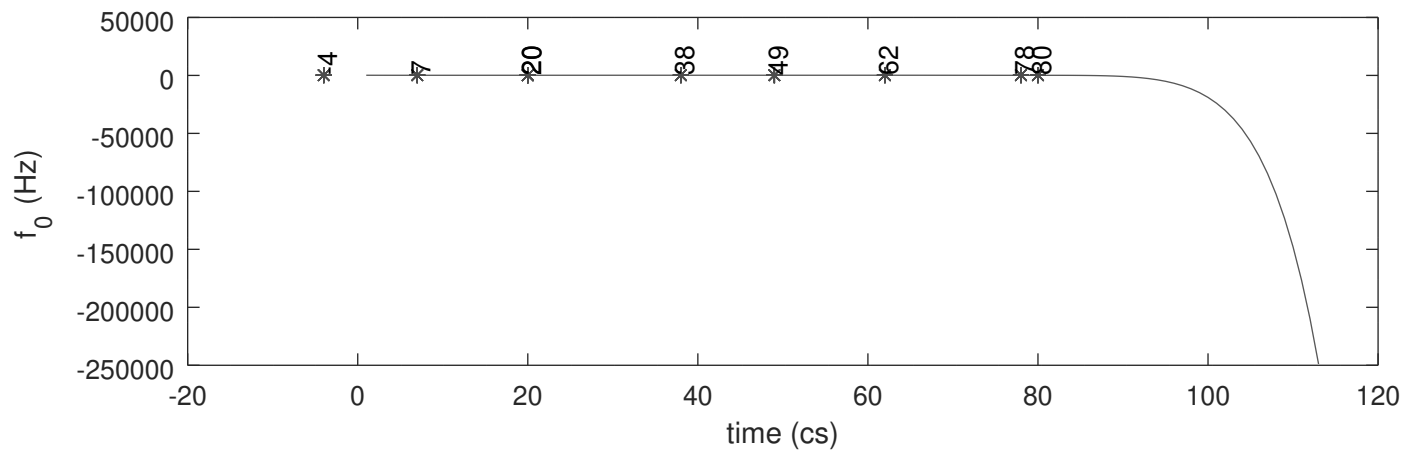
Modelled f_0 , maxima and minima



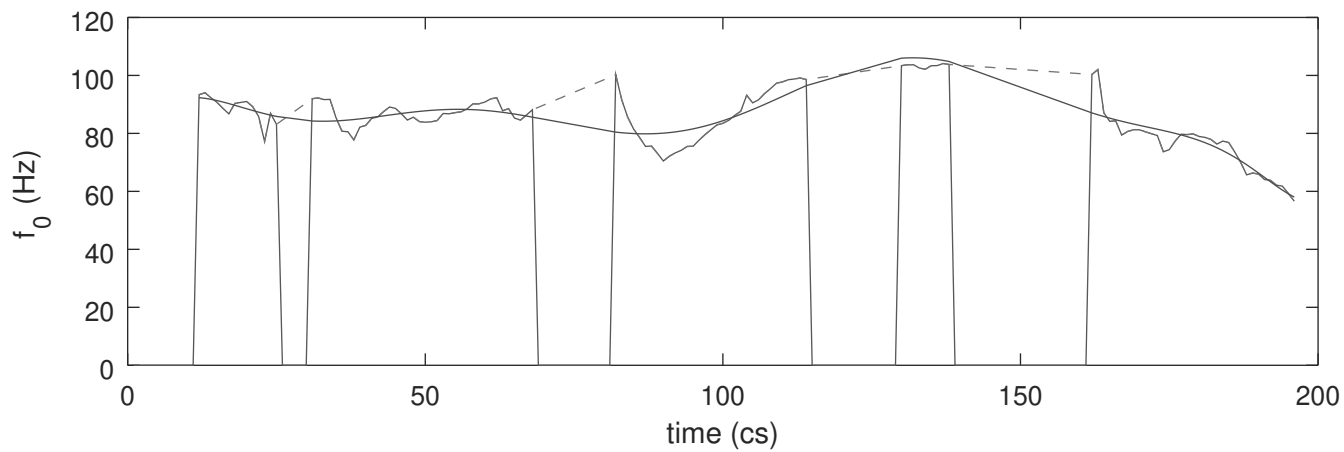
ell_20151207_d30.wav.f0.txt



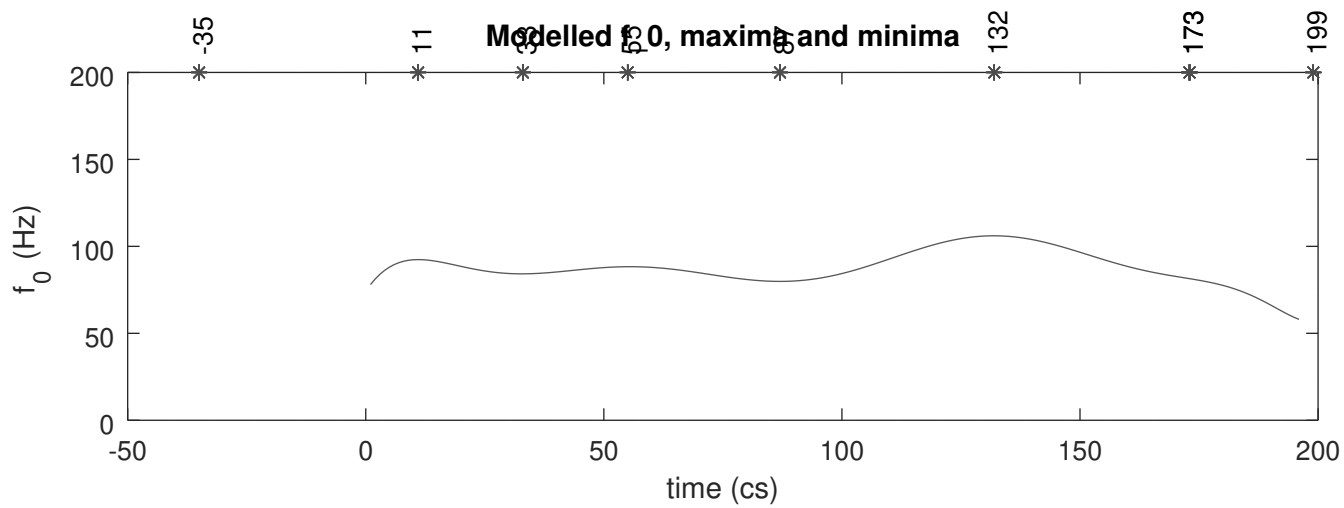
Modelled f_0 , maxima and minima



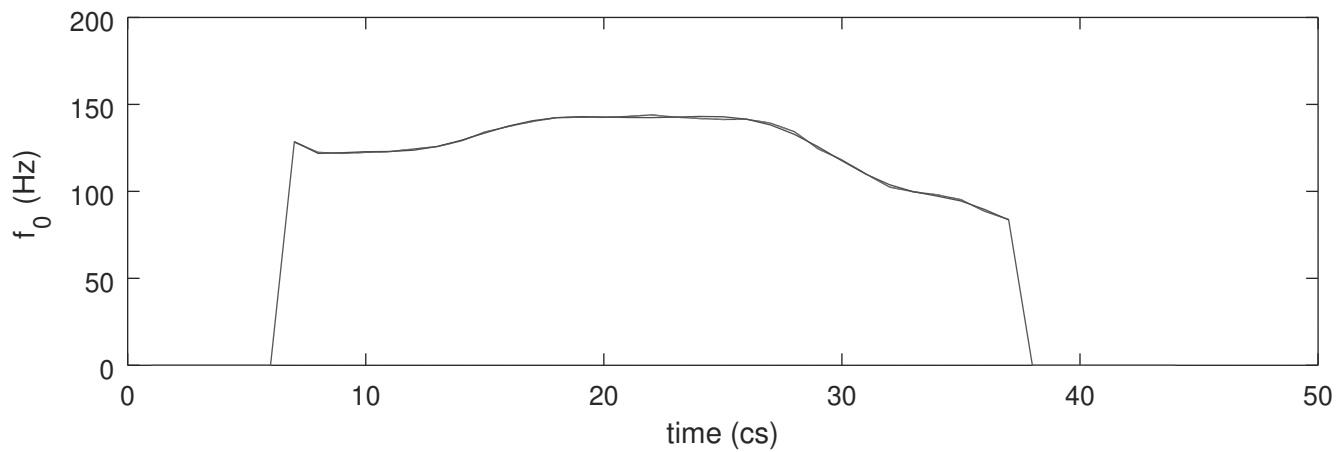
ell_20151207_d31.wav.f0.txt



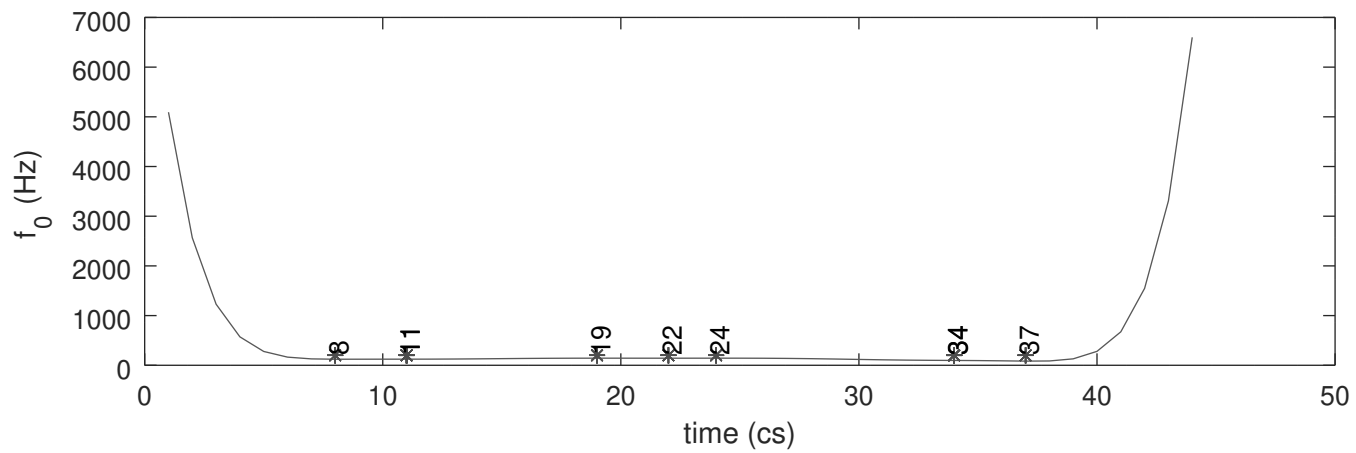
Modelled f_0 , maxima and minima



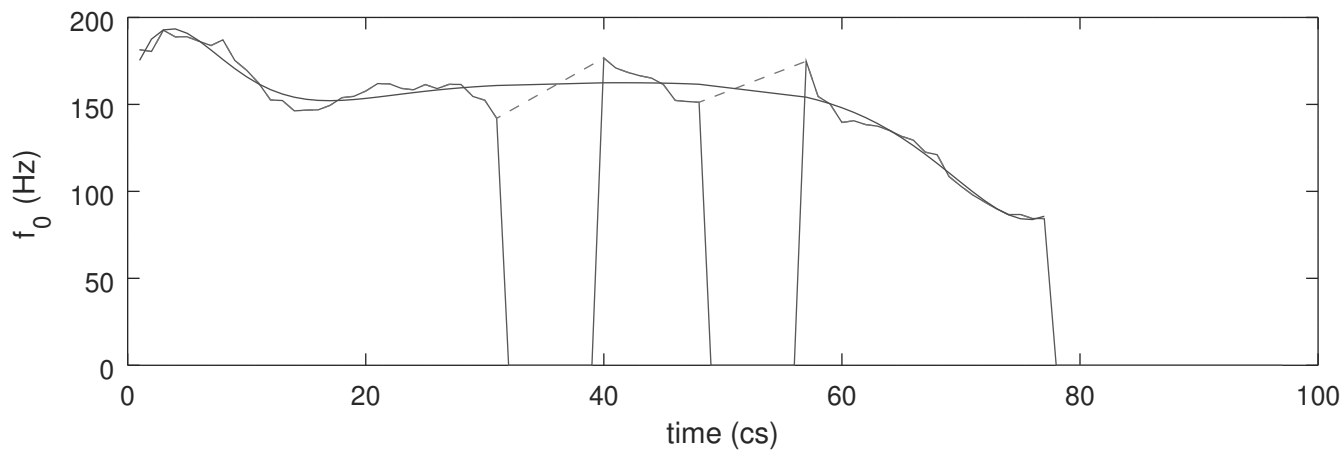
ell_20151207_d36.wav.f0.txt



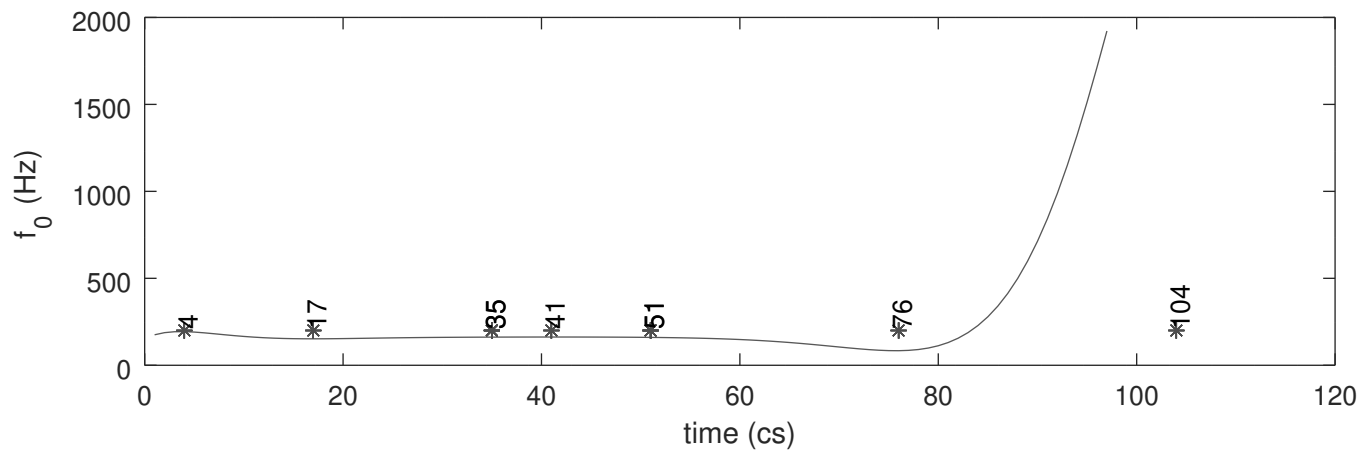
Modelled f_0 , maxima and minima



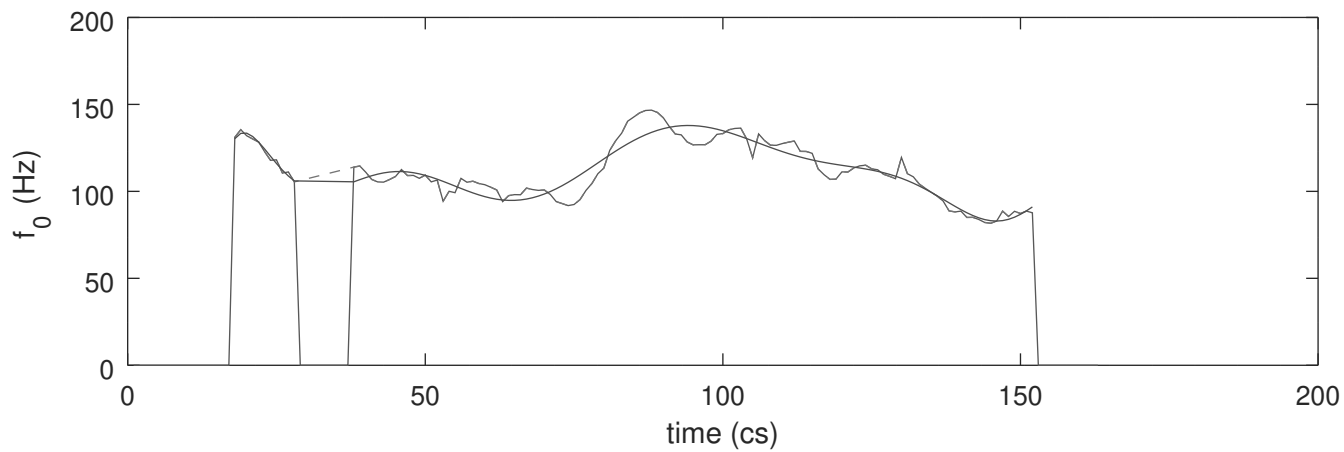
ell_20151207_d3.wav.f0.txt



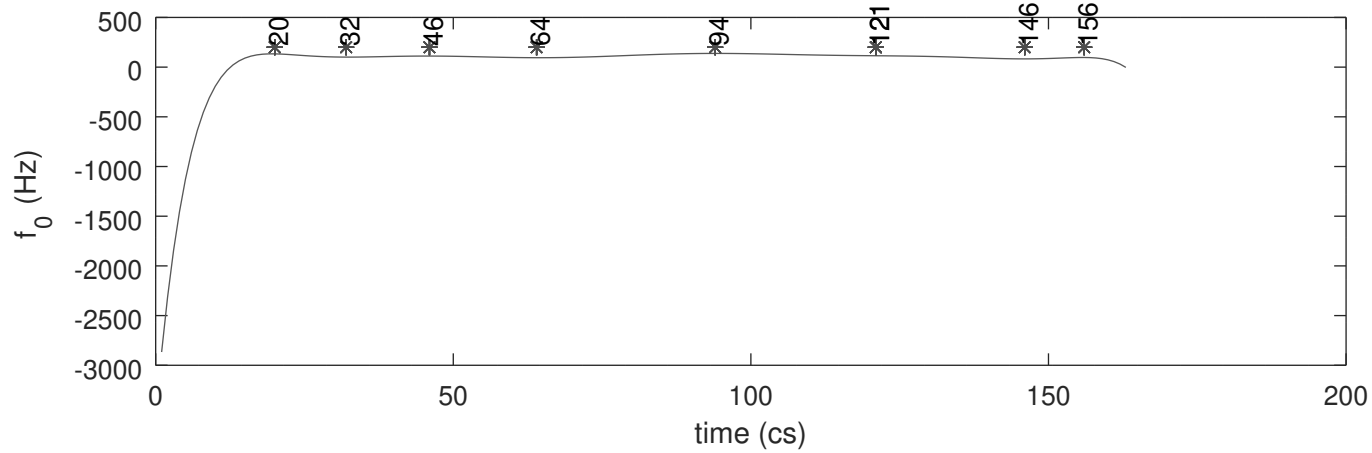
Modelled f_0 , maxima and minima



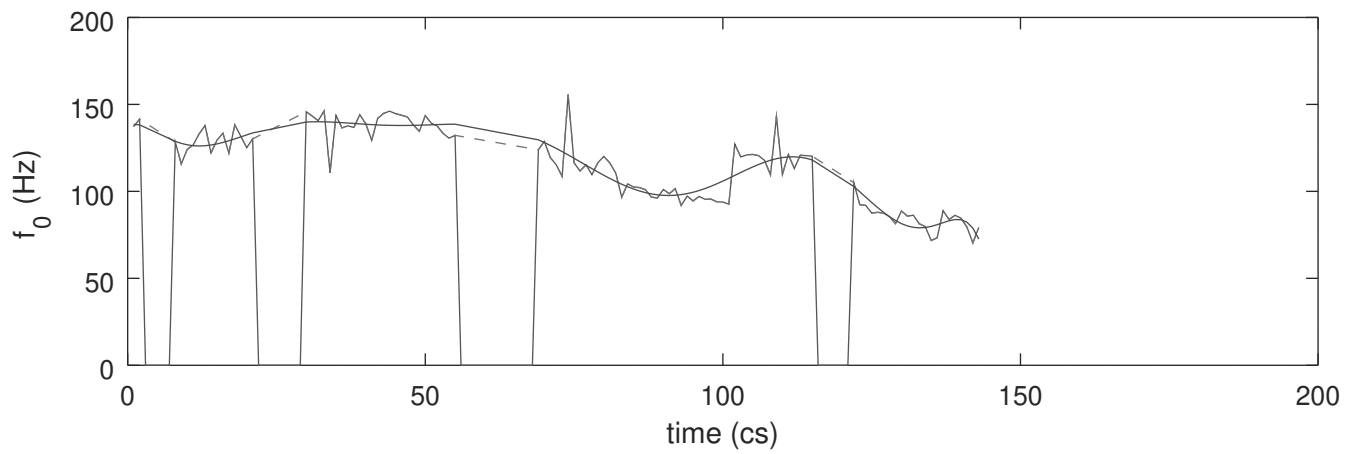
ell_20151207_d9.wav.f0.txt



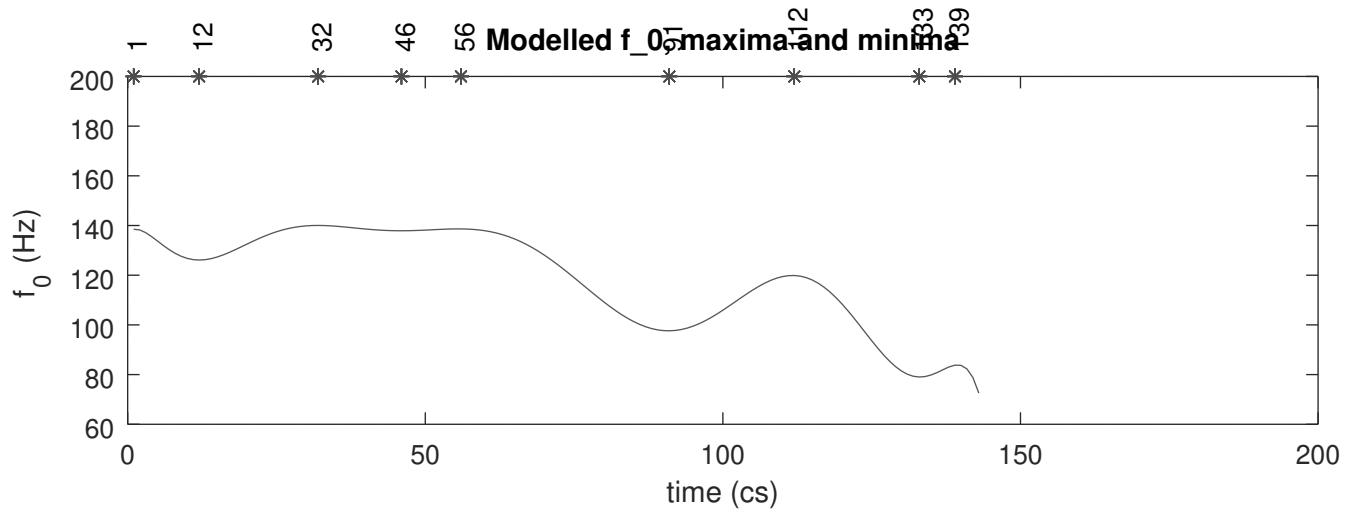
Modelled f_0 , maxima and minima



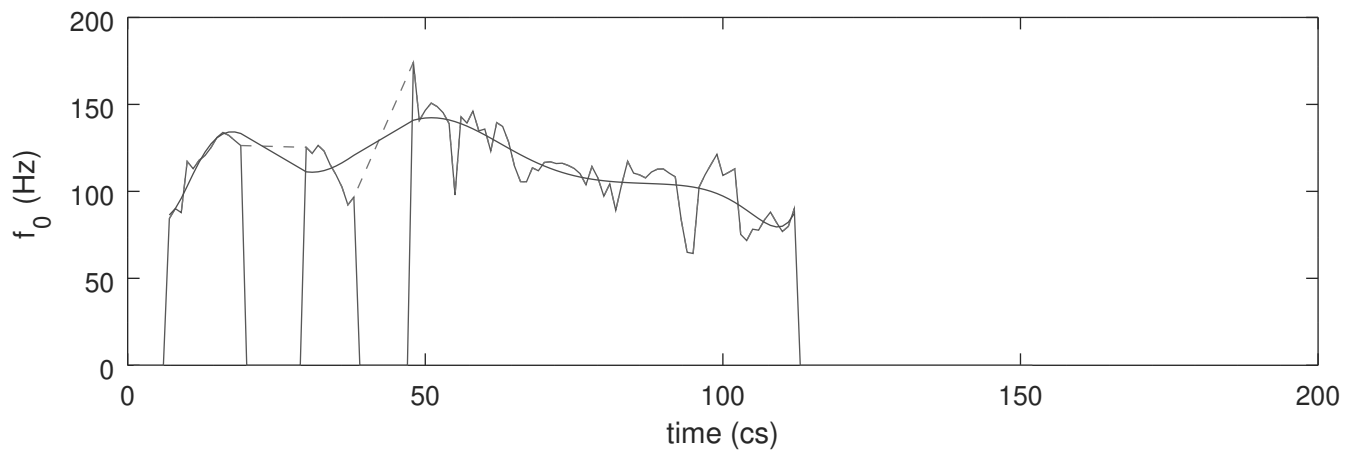
Male_67_2_conversational_Athens_d10.wav.f0.txt



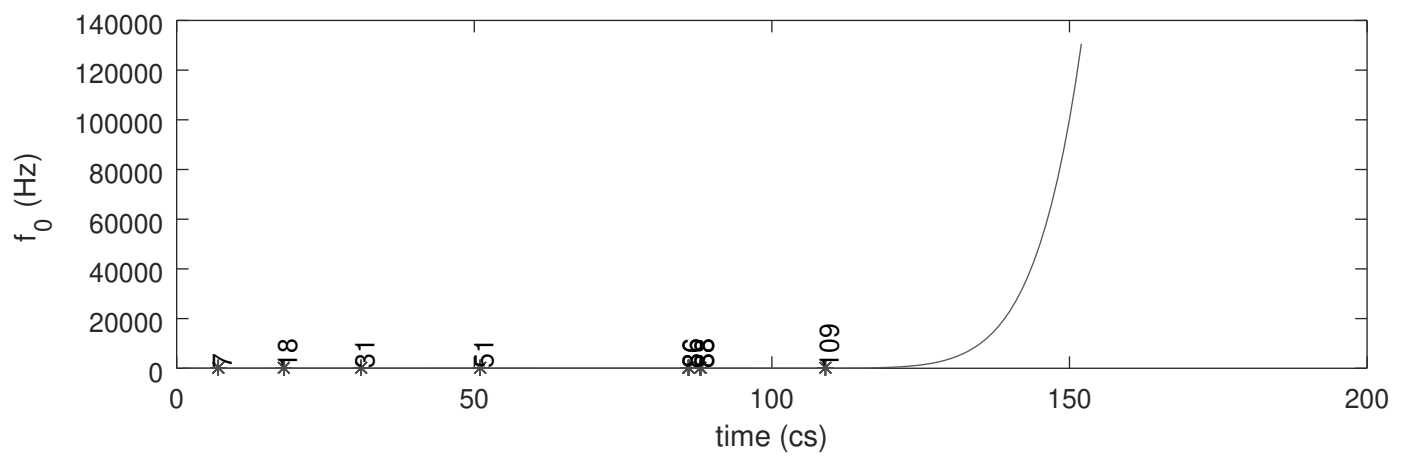
Modelled f_0 maxima and minima



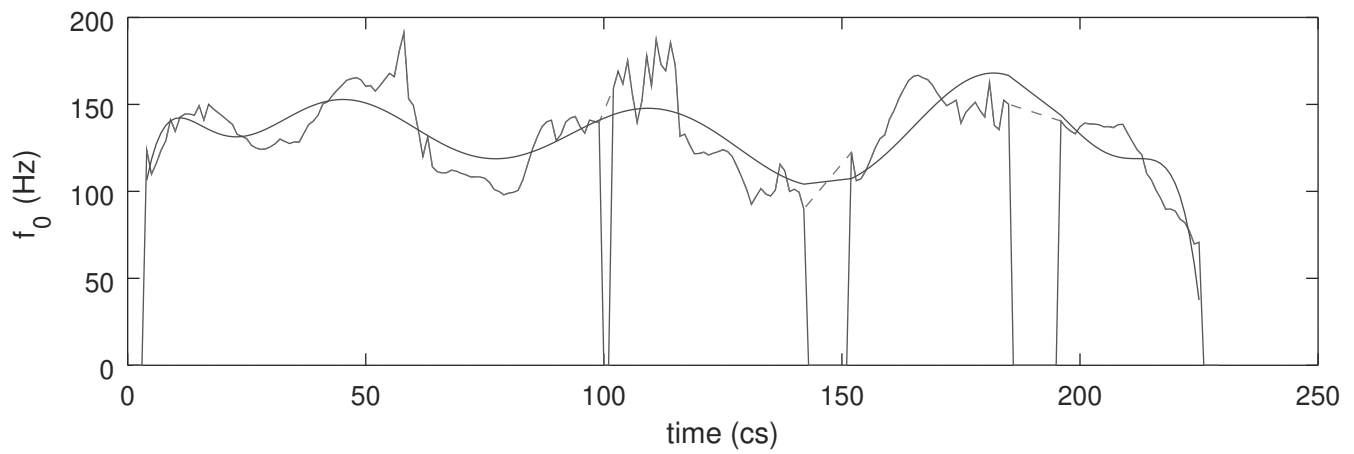
Male_67_2_conversational_Athens_d11.wav.f0.txt



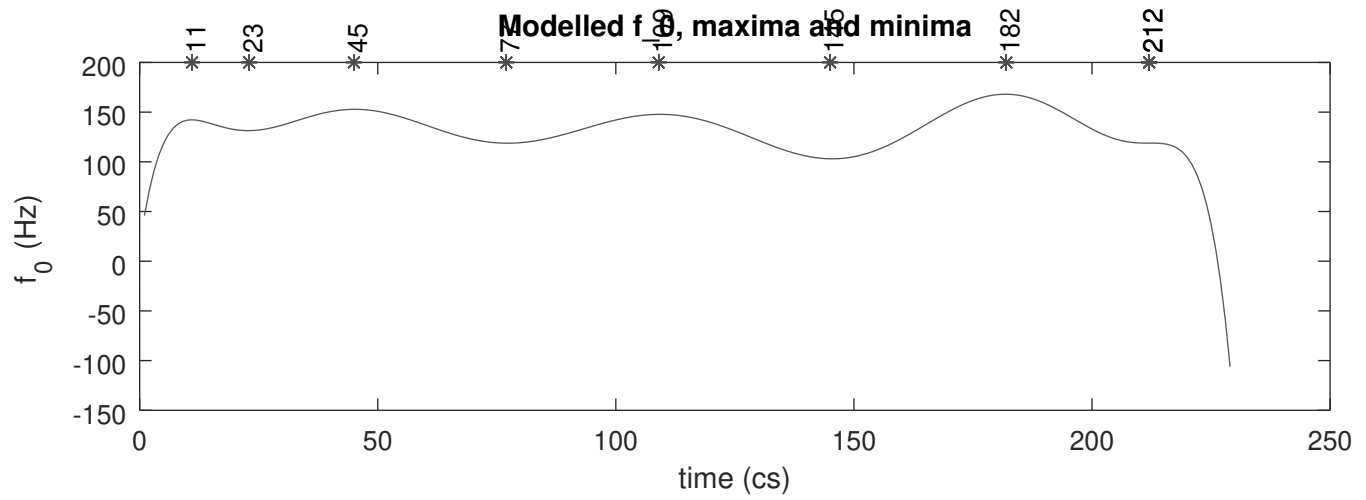
Modelled f_0 , maxima and minima



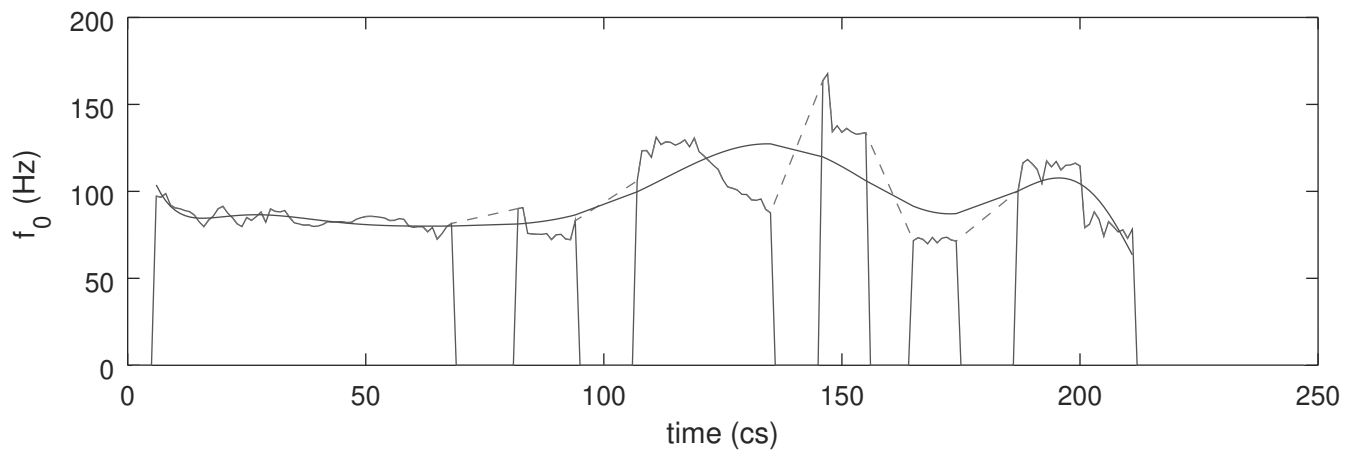
Male_67_2_conversational_Athens_d12.wav.f0.txt



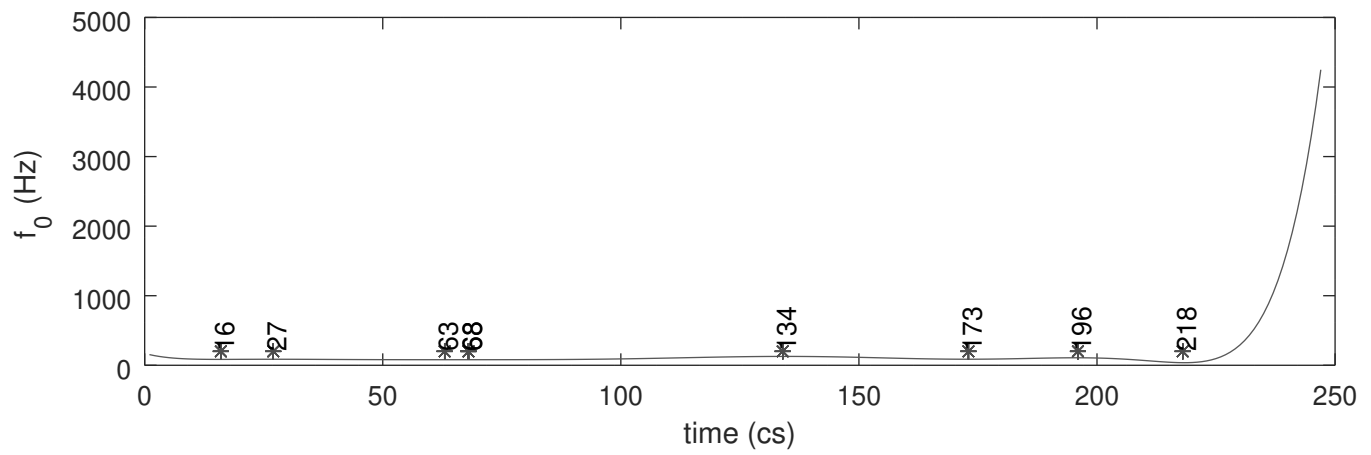
Modelled f_0 , maxima and minima



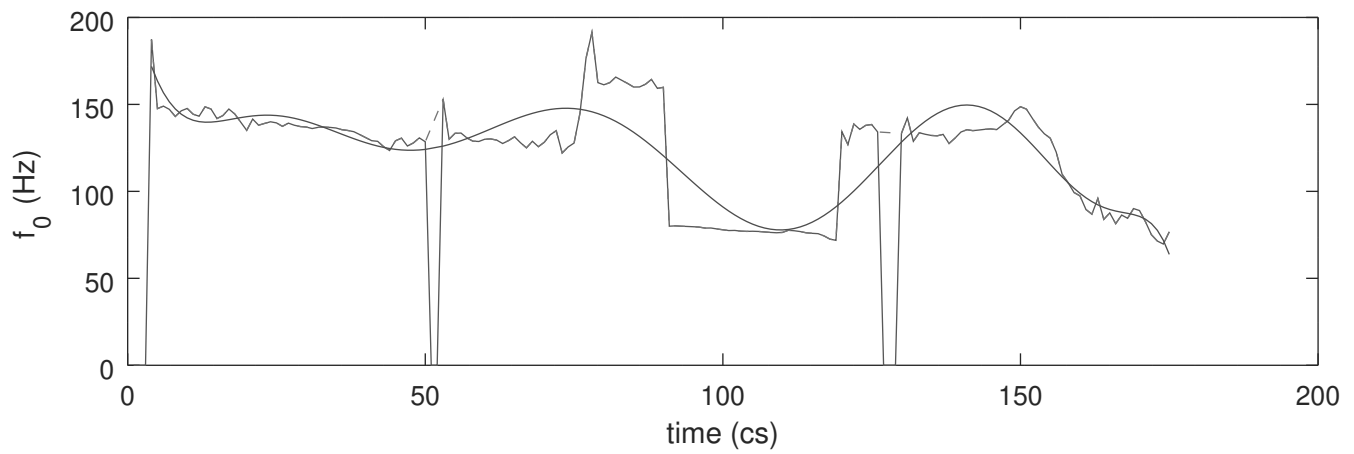
Male_67_2_conversational_Athens_d17.wav.f0.txt



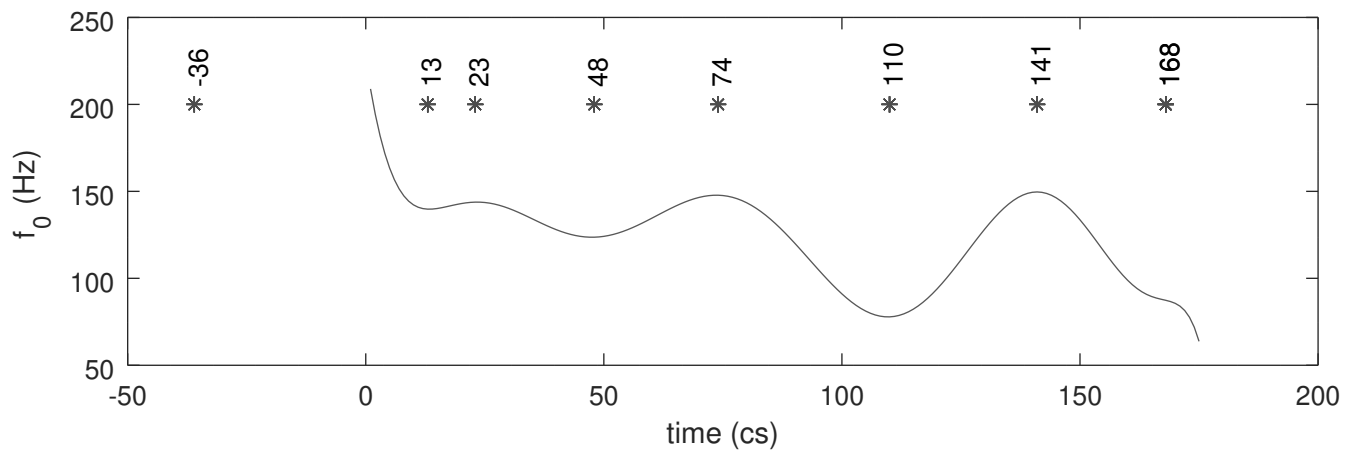
Modelled f_0 , maxima and minima

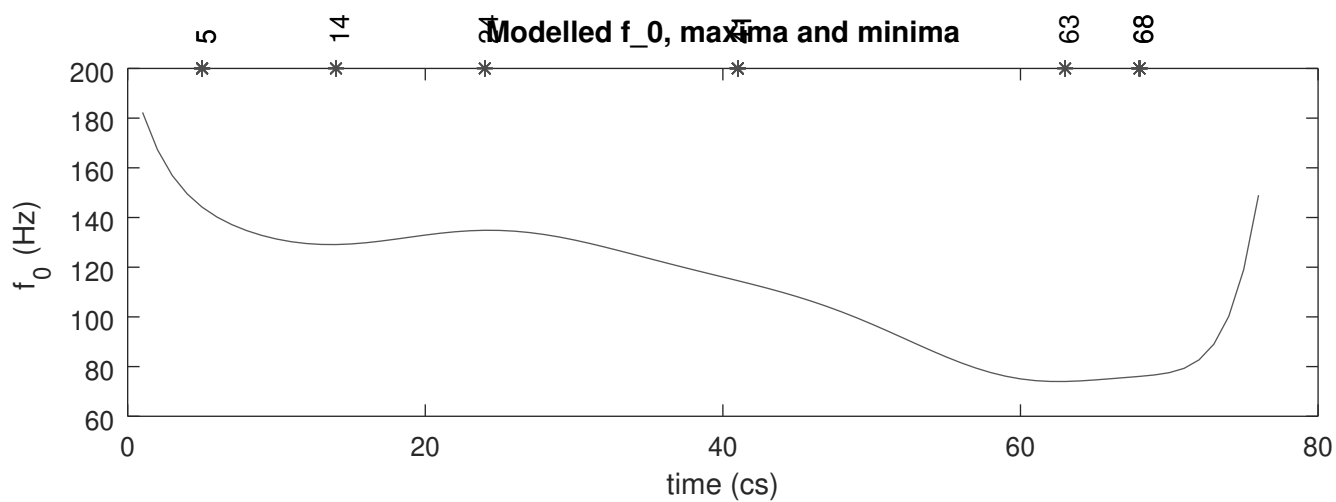
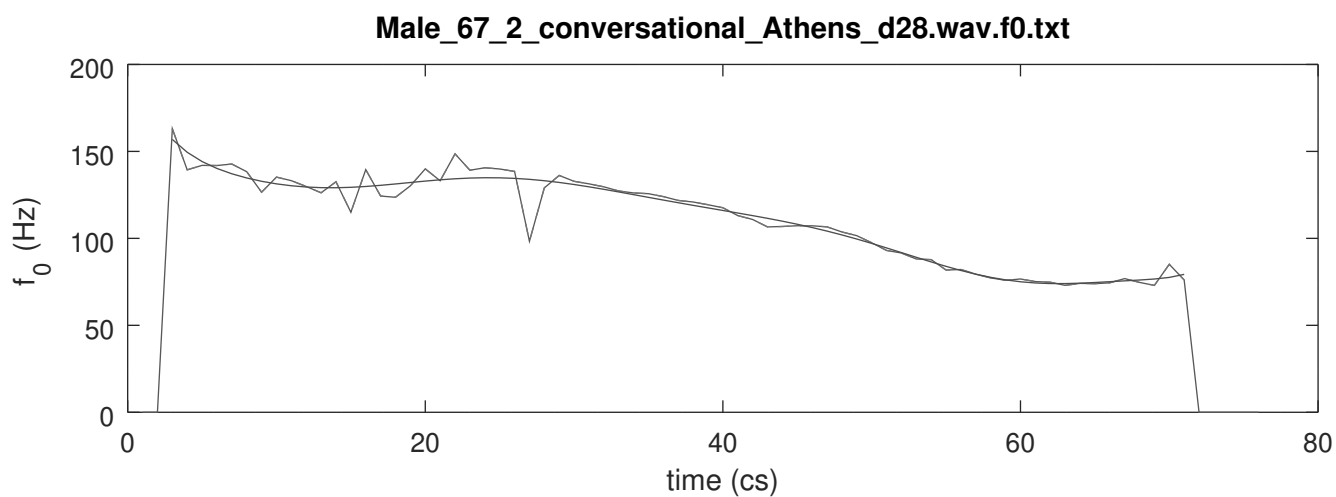


Male_67_2_conversational_Athens_d22.wav.f0.txt

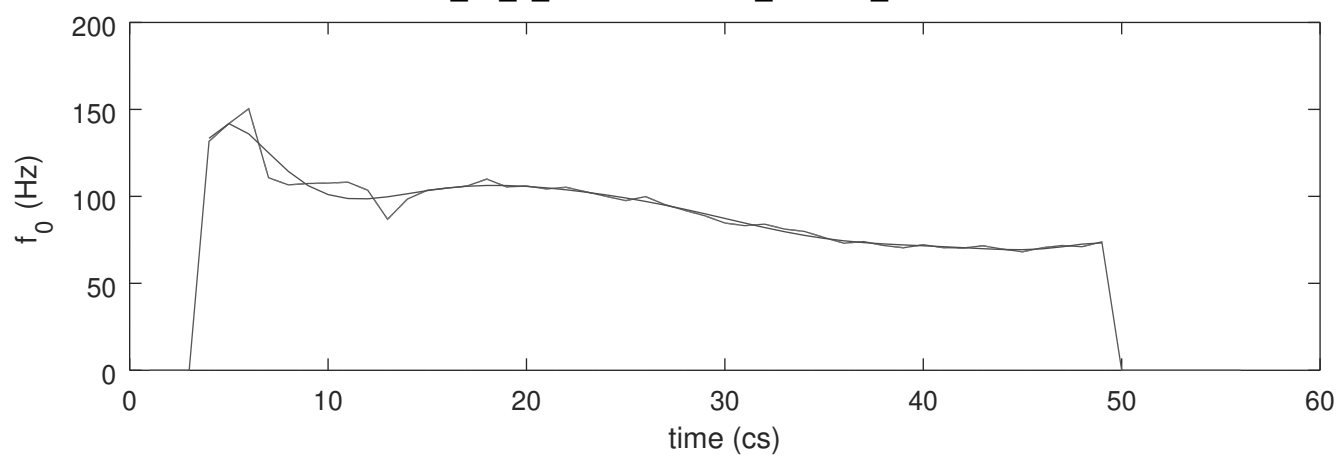


Modelled f_0 , maxima and minima

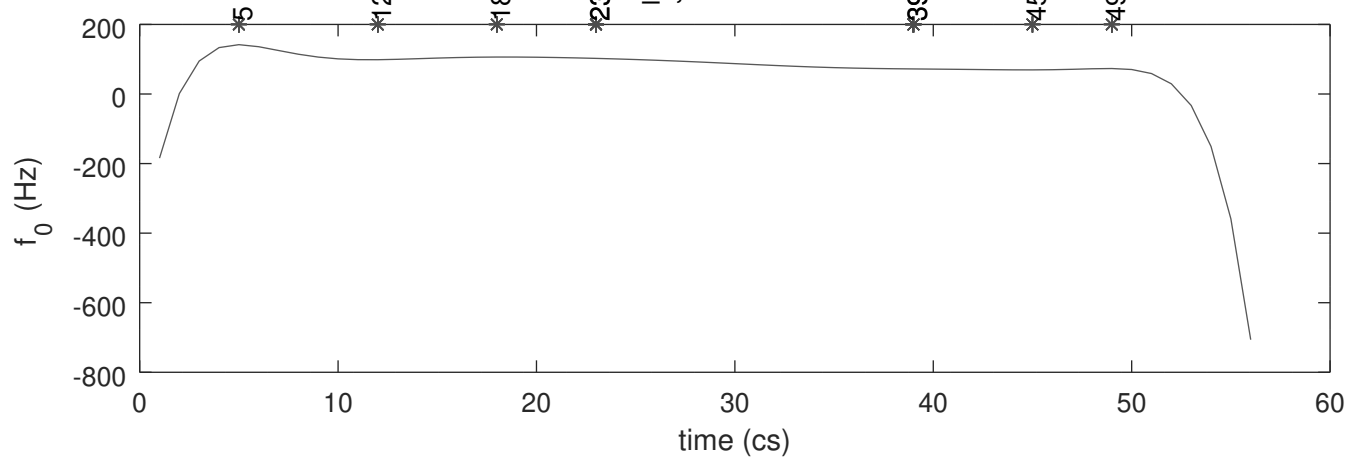




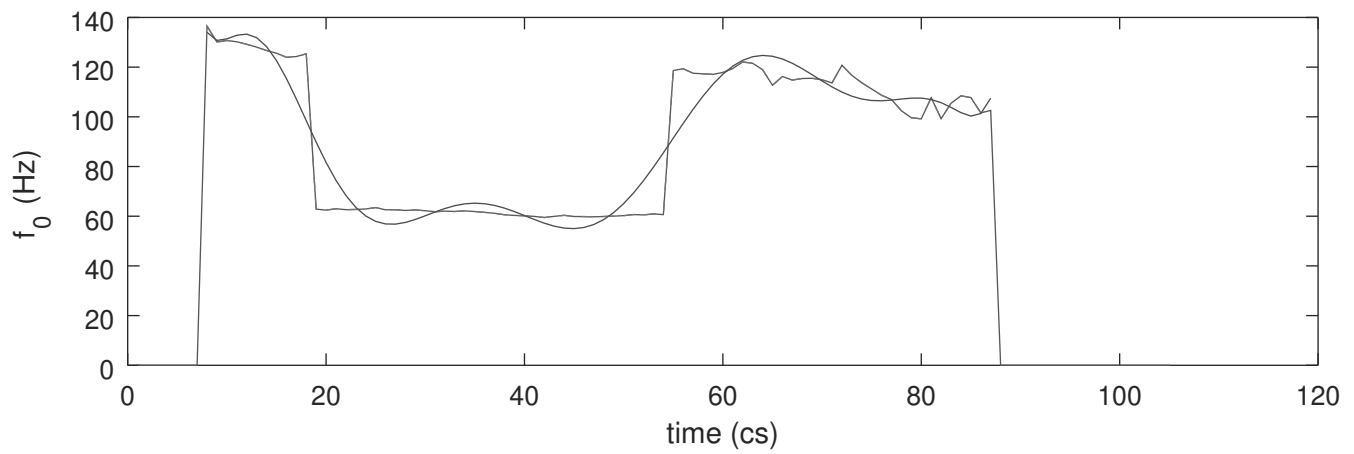
Male_67_2_conversational_Athens_d2.wav.f0.txt



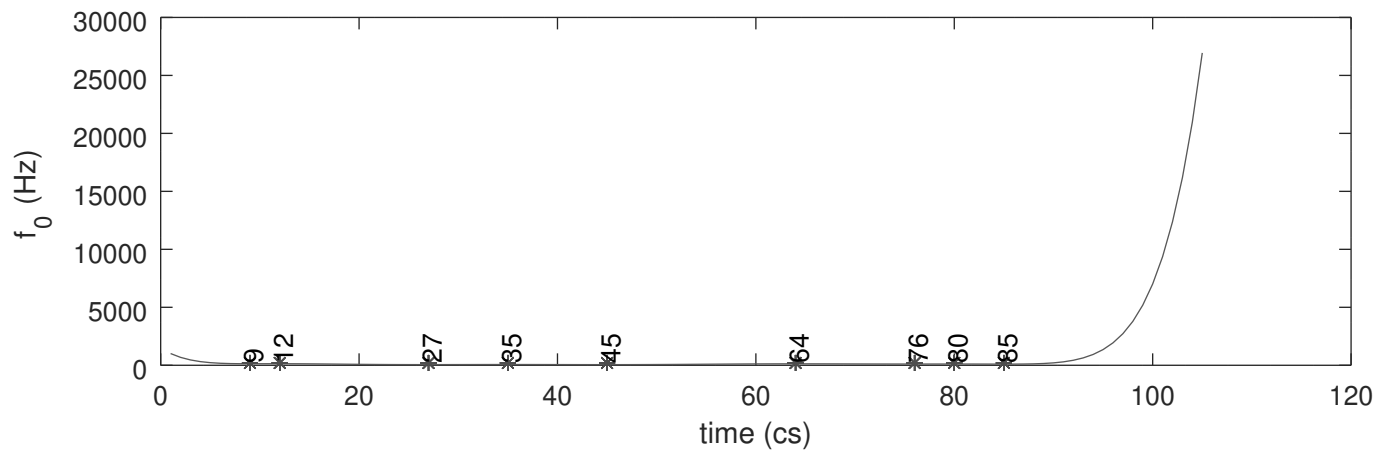
Modelled f_0 , maxima and minima



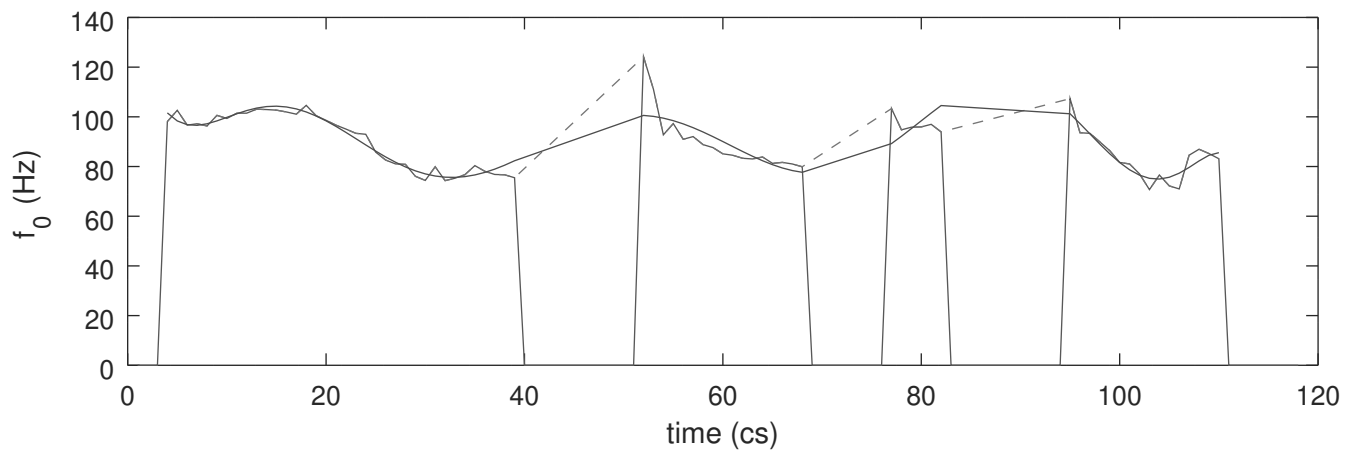
Male_67_2_conversational_Athens_d31.wav.f0.txt



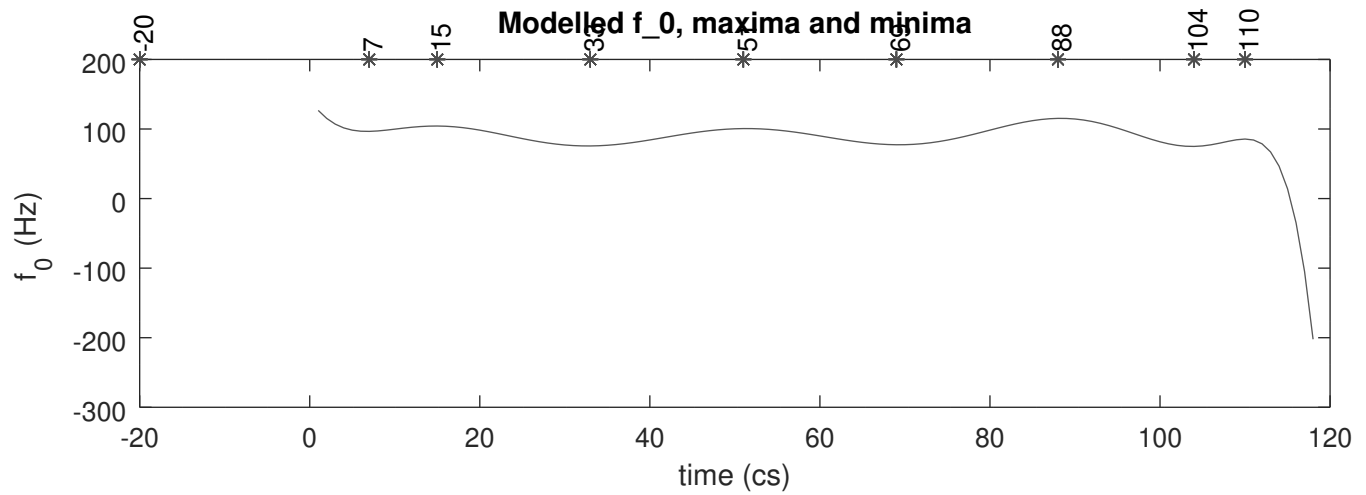
Modelled f_0 , maxima and minima



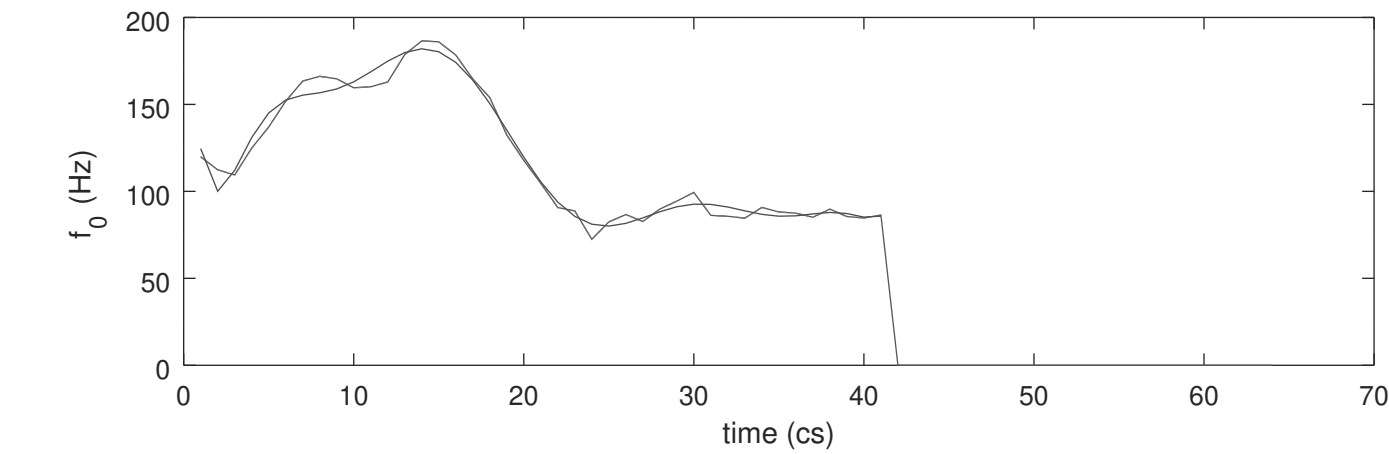
Male_67_2_conversational_Athens_d32.wav.f0.txt



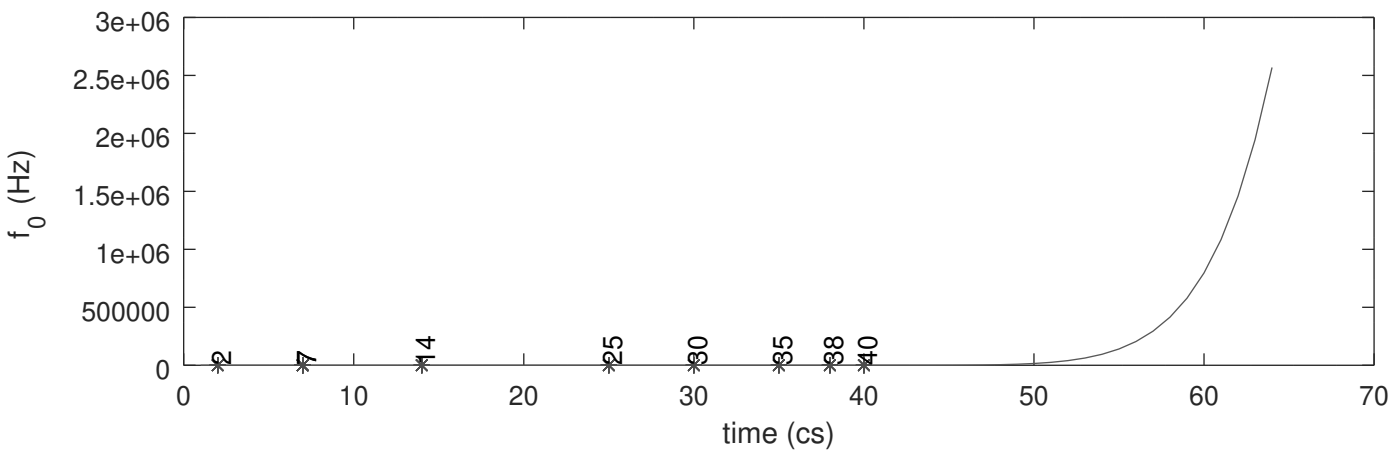
Modelled f_0 , maxima and minima



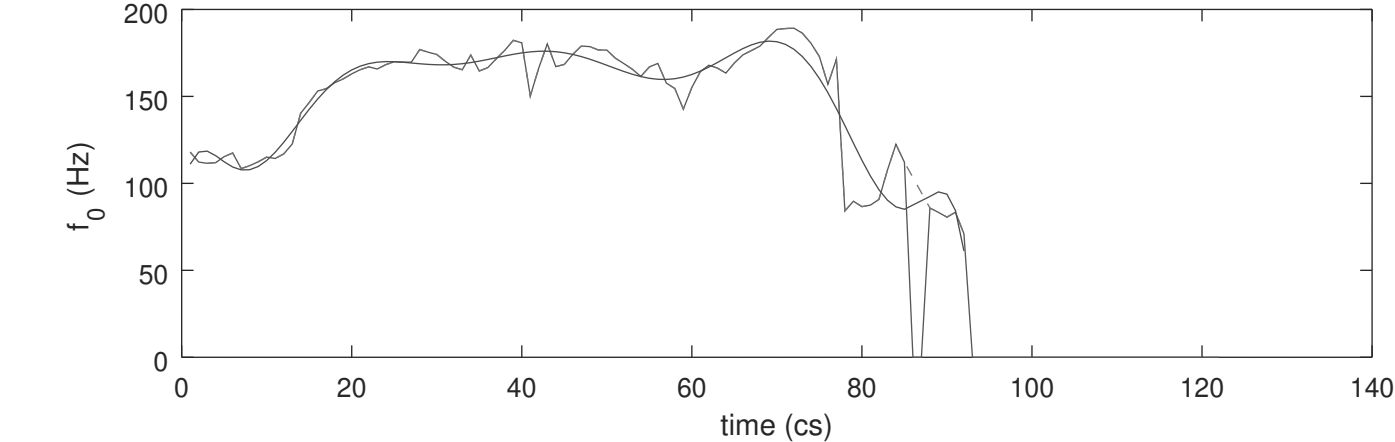
Male_67_2_conversational_Athens_d33.wav.f0.txt



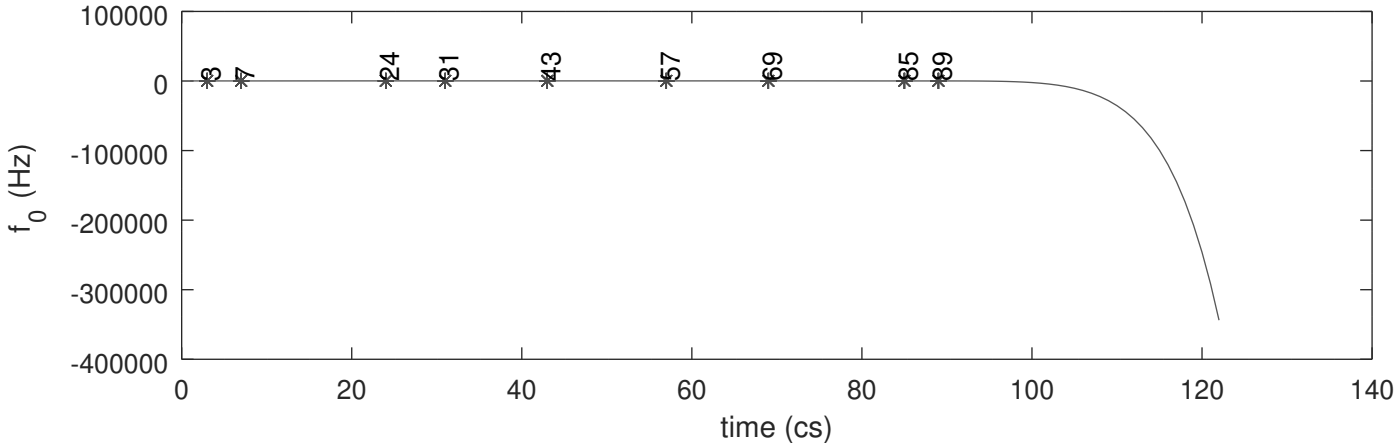
Modelled f_0, maxima and minima



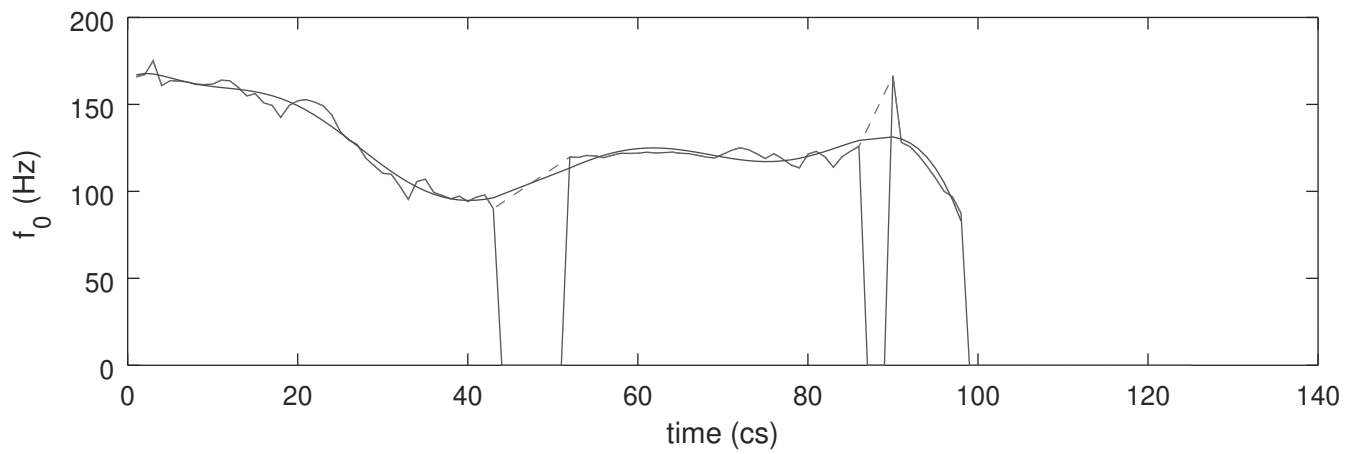
Male_67_2_conversational_Athens_d38.wav.f0.txt



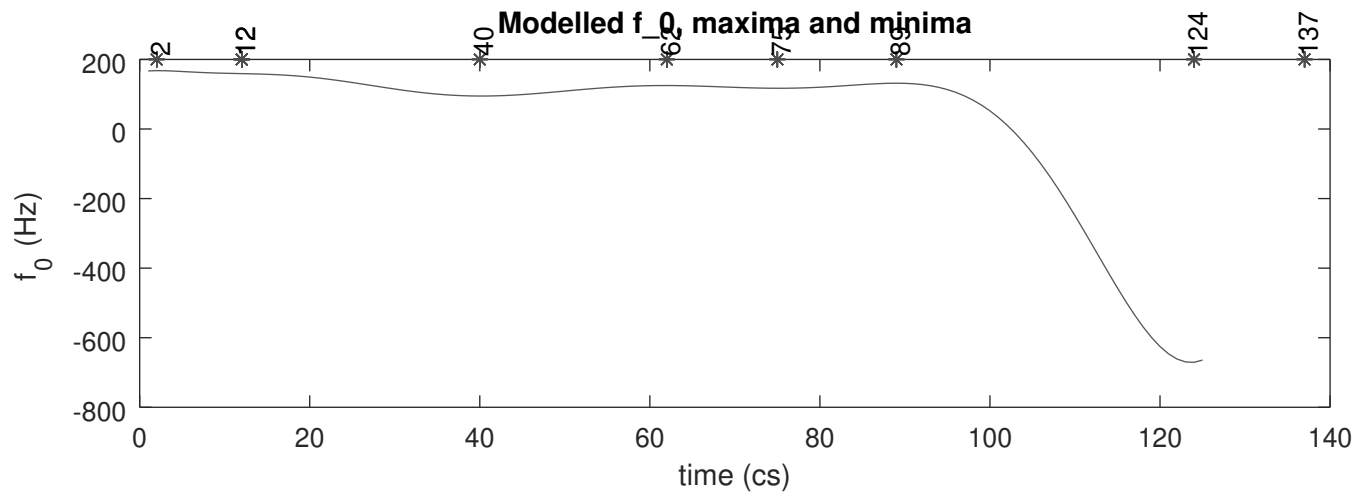
Modelled f_0, maxima and minima



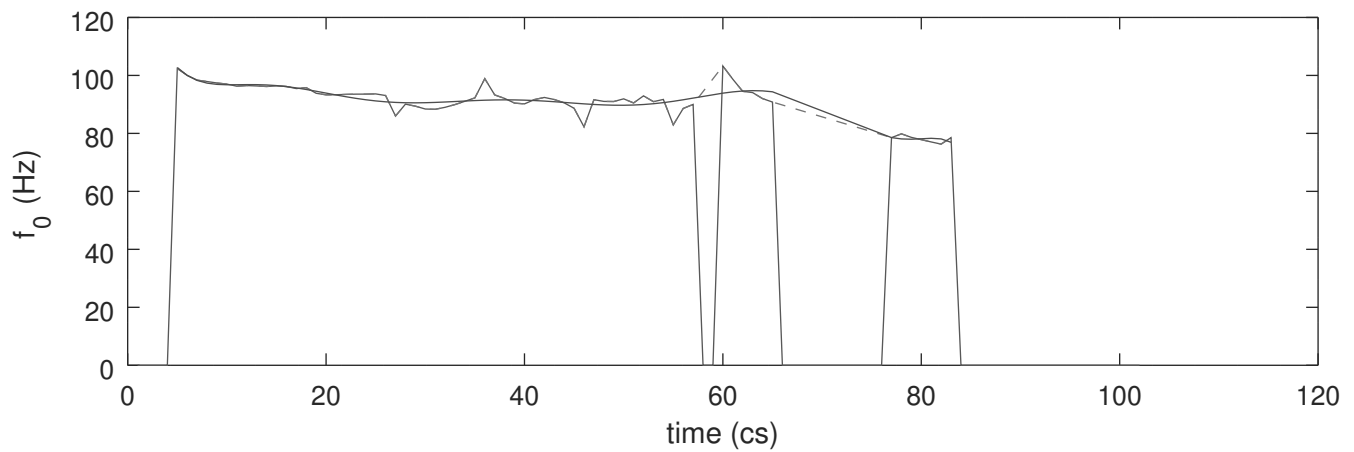
Male_67_2_conversational_Athens_d39.wav.f0.txt



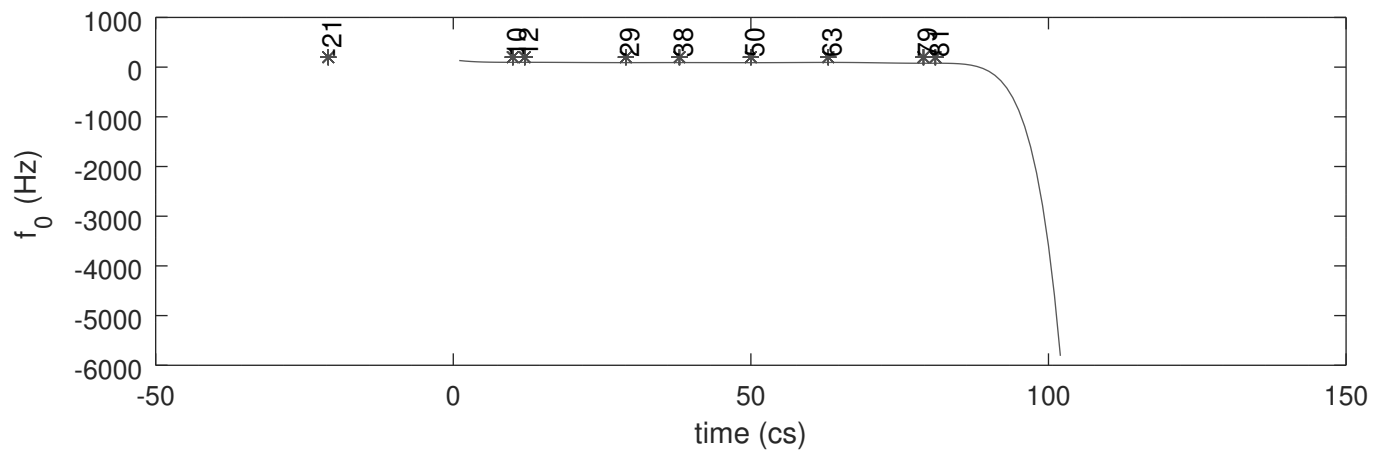
Modelled f_0 , maxima and minima



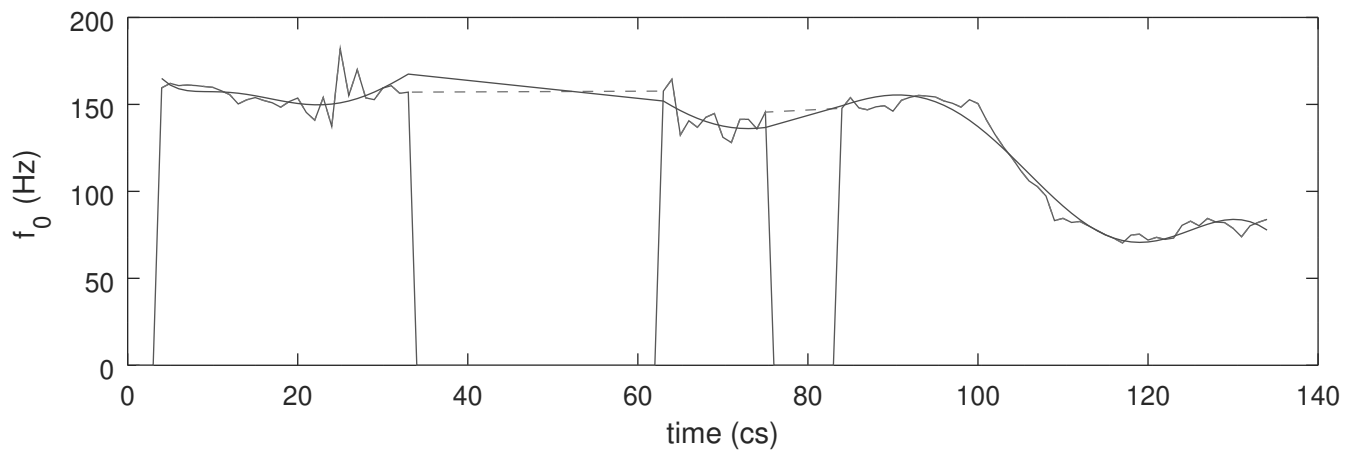
Male_67_2_conversational_Athens_d3.wav.f0.txt



Modelled f_0 , maxima and minima



Male_67_2_conversational_Athens_d9.wav.f0.txt



Modelled f_0 maxima and minima

