

SUPPLEMENTARY MATERIAL

Morphological and Functional Outcomes in the Long-Term Natural Course of Peripapillary Pachychoroid Syndrome

Christina Karakosta^{1*}, Peter Kiraly^{1,2*}, Anastasios Bisoukis³, Konstantinos I.

Bougioukas⁴, Dominik M. Fischer^{1,2,5}

- 1. Oxford Eye Hospital, Oxford University Hospitals NHS Foundation Trust, Oxford, UK.*
- 2. Nuffield Laboratory of Ophthalmology, Nuffield Department of Clinical Neurosciences, University of Oxford, Oxford, UK.*
- 3. Bristol Eye Hospital, University Hospitals Bristol NHS Foundation Trust, Bristol, UK*
- 4. Department of Hygiene, Social-Preventive Medicine and Medical Statistics, School of Medicine, Faculty of Health Sciences, Aristotle University of Thessaloniki, Thessaloniki, Greece*
- 5. Centre for Ophthalmology, University Hospital Tübingen, Tübingen, Germany.*

**** These two authors contributed equally to this work and designated as co-first authors.***

Corresponding author: Dominik M. Fischer, email: dominik.fishcer@ouh.nhs.uk

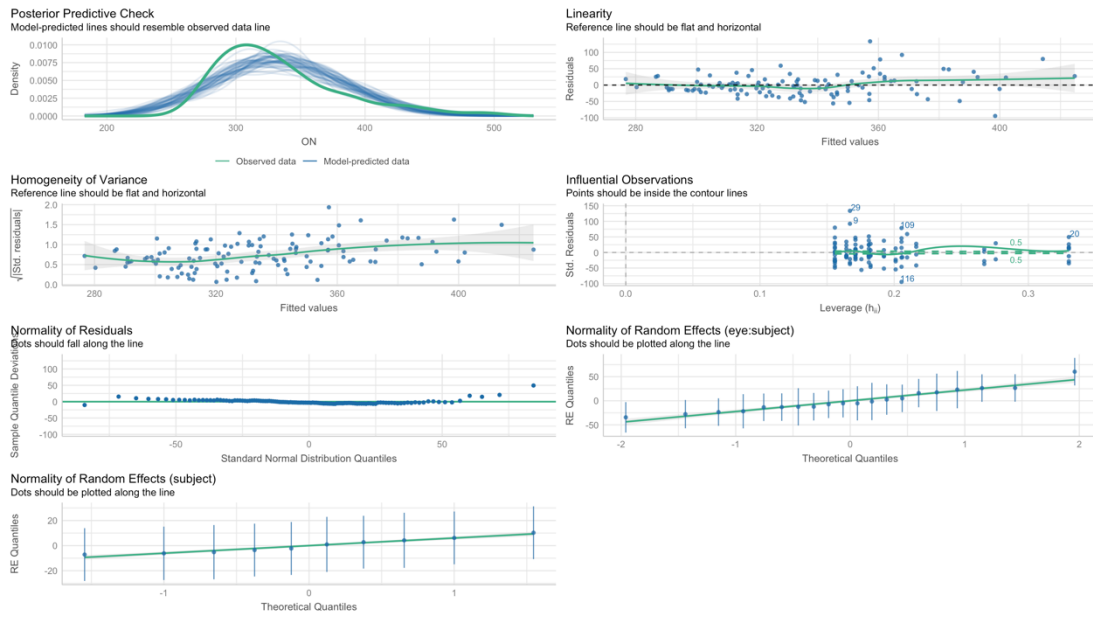


Figure S1. Model assumptions for the outer nasal macular thickness using the performance package.

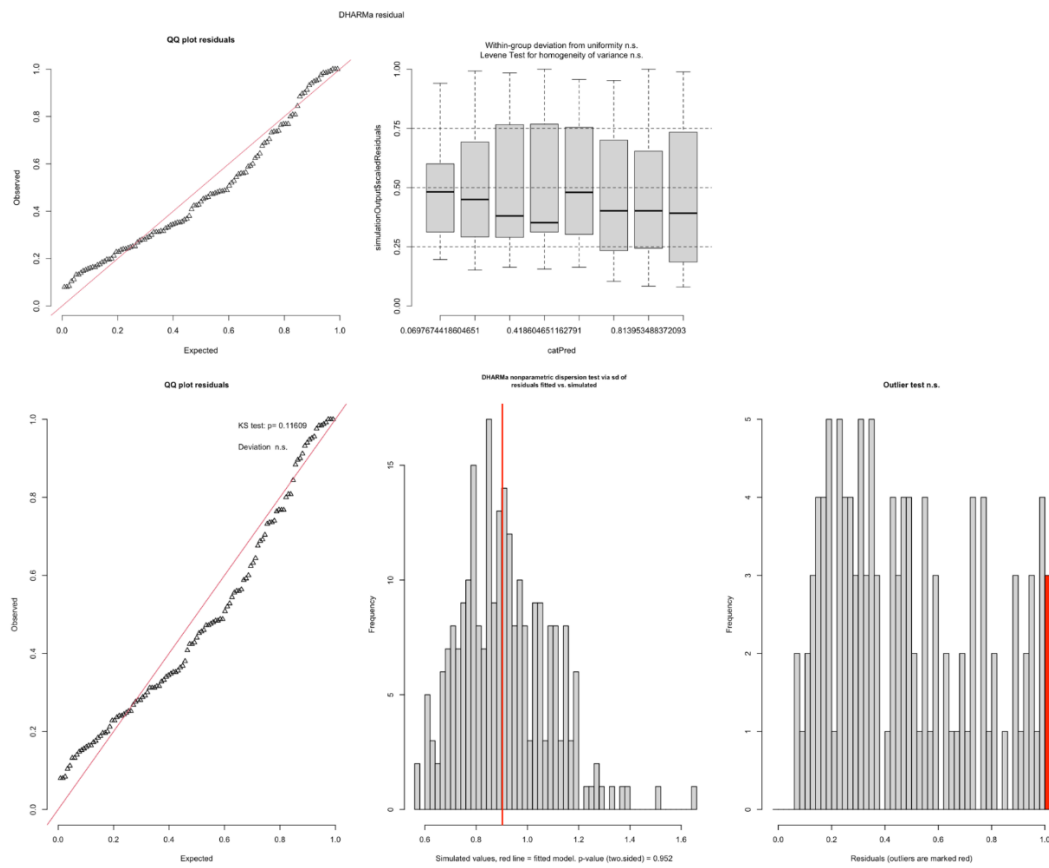


Figure S2. Residual diagnostics using DHARMa for the outer nasal macular thickness.

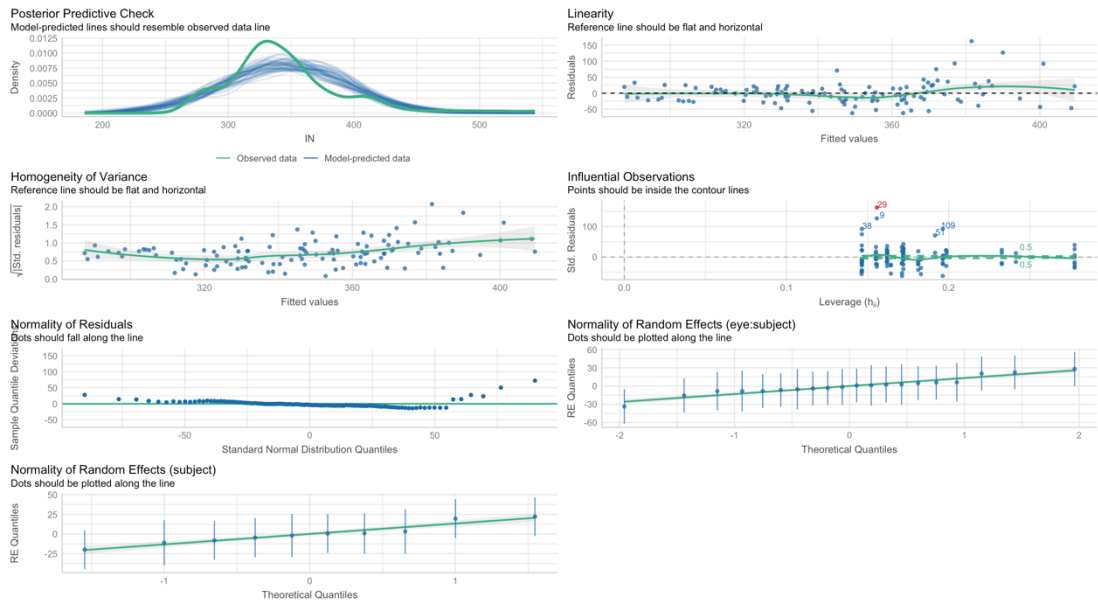


Figure S3. Model assumptions for the inner nasal macular thickness using the performance package.

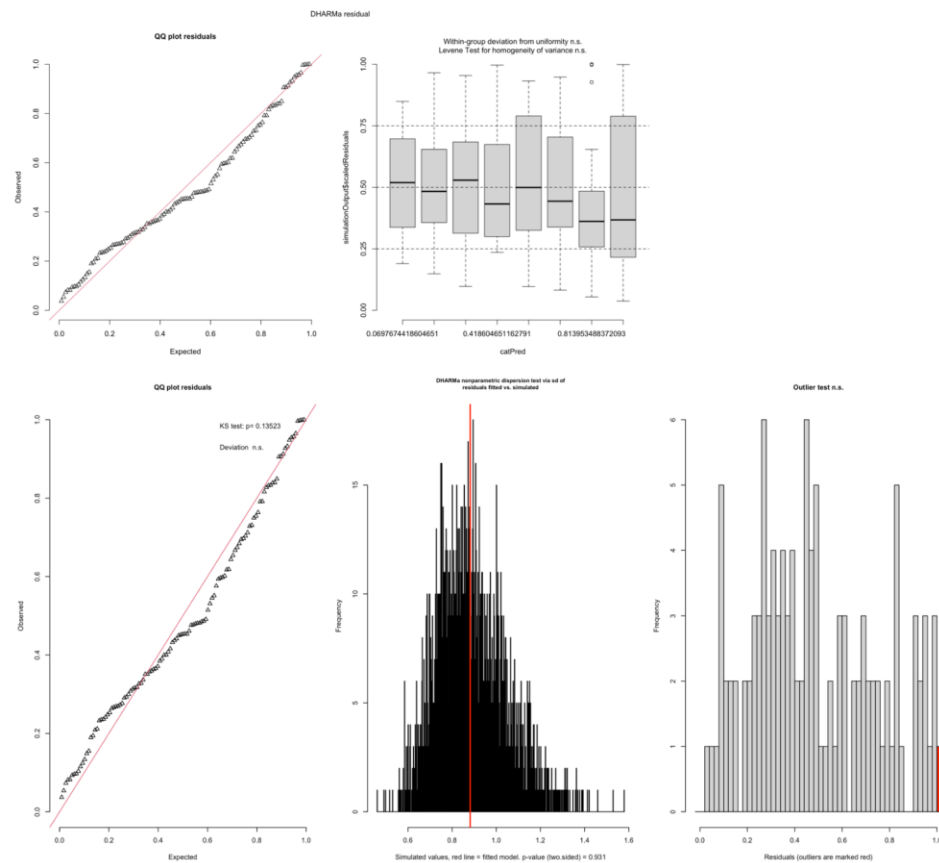


Figure S4. Residual diagnostics using DHARMA for the inner nasal macular thickness.

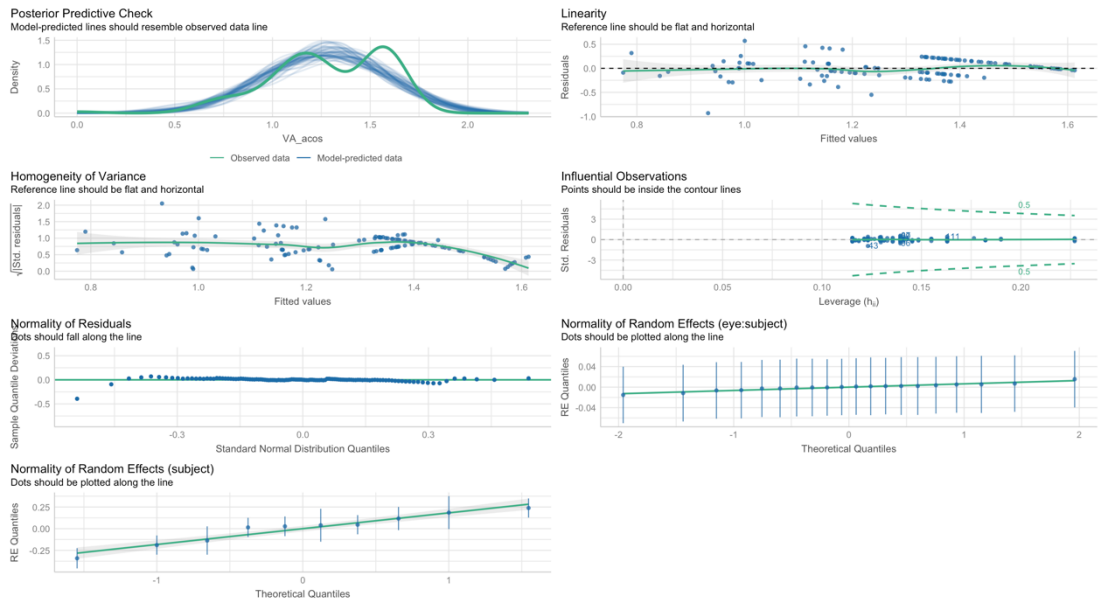


Figure S5. Model assumptions for the best corrected visual acuity using the performance package.

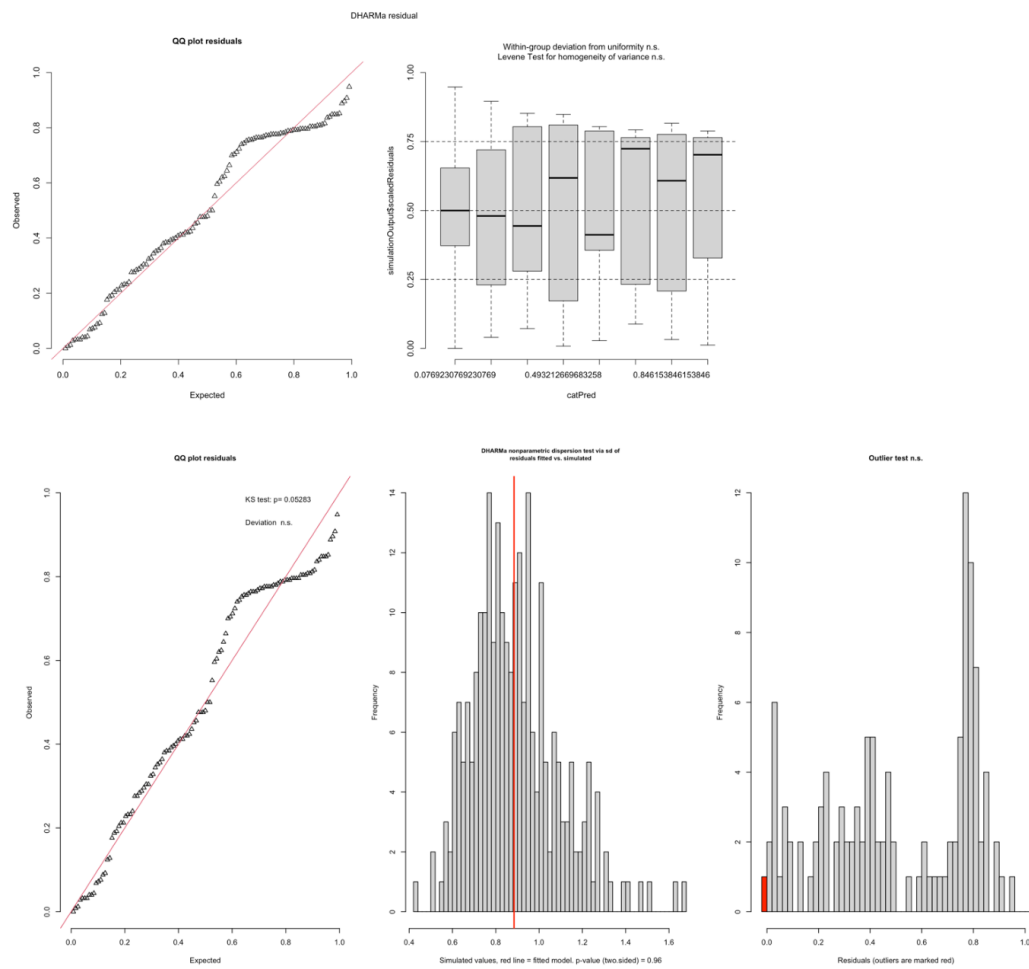


Figure S6. Residual diagnostics using DHARMa for the best corrected visual acuity.

Table S1. Pairwise Consecutive Contrasts of Outer Nasal and Inner Nasal Macular Thickness (μm) and Best Corrected Visual Acuity (LogMAR) (Sidak-adjusted).

Outer Nasal Macular Thickness					
Contrast	Estimate (Δ Mean)	SE	df	t-value	Adjusted p-value
0.5 yr - baseline	-10.50	11.3	90.3	-0.930	0.953
1 yr - 0.5 yr	-12.17	12.2	93.0	-0.996	0.934
1.5 yrs - 1 yr	-10.62	13.2	91.3	-0.806	0.979
2 yrs - 1.5 yrs	-3.57	13.5	90.3	-0.265	1.000
2.5 yrs - 2 yrs	12.11	14.1	90.9	0.857	0.970
3 yrs - 2.5 yrs	-7.25	14.6	90.3	-0.498	0.999
3.5 yrs - 3 yrs	5.79	15.9	90.9	0.364	1.000
Inner Nasal Macular Thickness					
Contrast	Estimate (Δ Mean)	SE	df	t value	Adjusted p-value
0.5 yr - baseline	-8.45	11.9	90.6	-0.707	0.990
1 yr - 0.5 yr	-16.38	12.9	93.4	-1.268	0.805
1.5 yrs - 1 yr	-9.50	13.9	91.7	-0.681	0.992
2 yrs - 1.5 yrs	-6.43	14.3	90.6	-0.450	0.999
2.5 yrs - 2 yrs	14.70	15.0	91.2	0.982	0.939
3 yrs - 2.5 yrs	-13.92	15.4	90.6	-0.902	0.960
3.5 yrs - 3 yrs	8.39	16.8	91.4	0.499	0.999
Best Corrected Visual Acuity					
Contrast	Estimate (Δ Mean) (Transformed data)	SE	df	t value	Adjusted p-value
0.5 yr - baseline	-0.045	0.070	91.4	-0.636	0.995
1 yr - 0.5 yr	-0.171	0.076	93.4	-2.251	0.173
1.5 yrs - 1 yr	0.203	0.082	92.1	2.480	0.100
2 yrs - 1.5 yrs	0.039	0.084	91.4	0.459	0.999
2.5 yrs - 2 yrs	-0.173	0.088	91.8	-1.976	0.308
3 yrs - 2.5 yrs	0.112	0.090	91.4	1.244	0.819
3.5 yrs - 3 yrs	0.032	0.099	92.5	0.322	1.000

Yr=year, yrs=years, Δ Mean=mean difference, SE=Standard Error, df=degrees of freedom