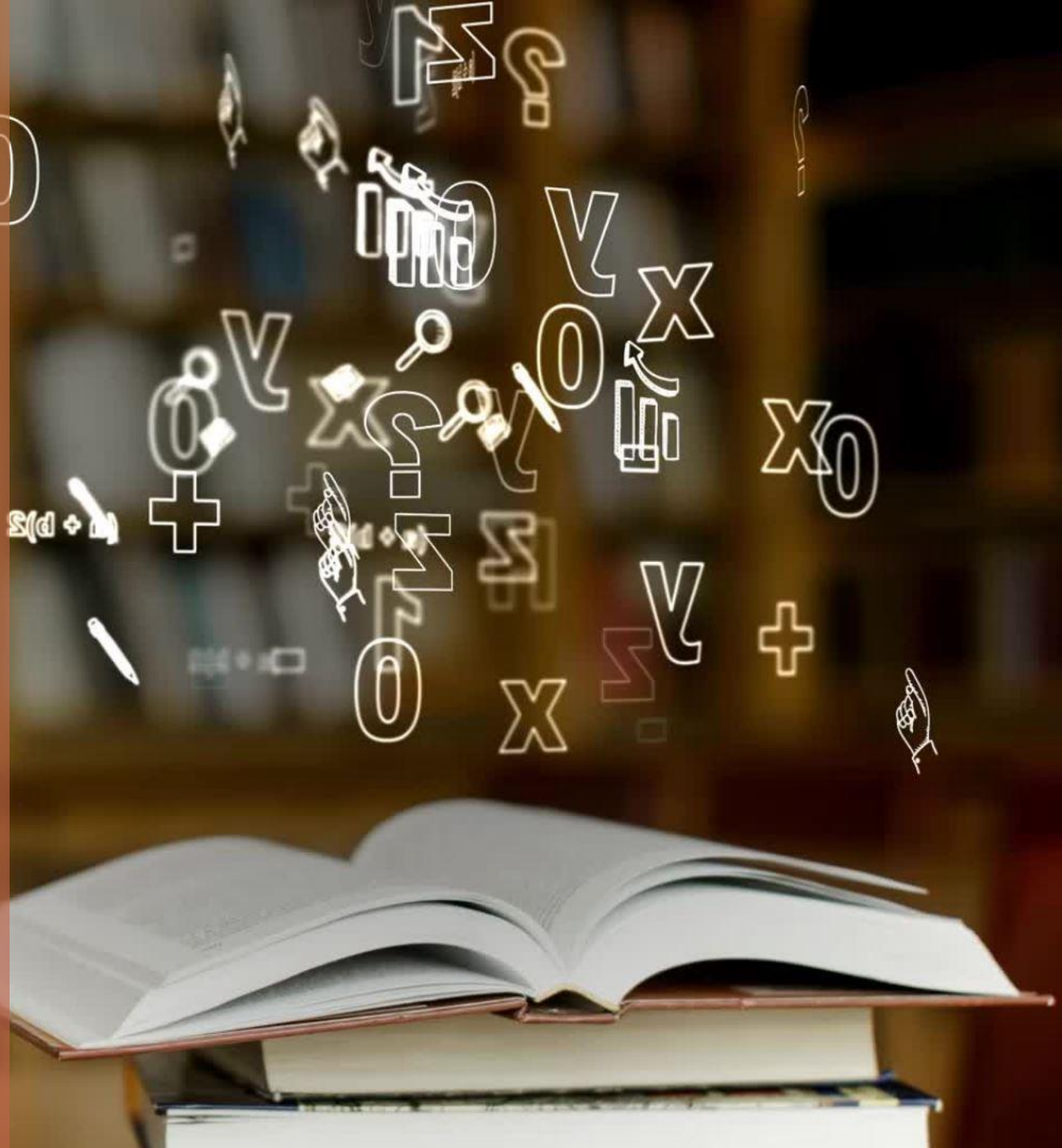


Revisiting the relationship between Oxford Students and their libraries

Devika,

Vice President Graduates Oxford Union



About the session

- Who are the students (importance of streamlining)
- What do they think of the libraries
- Surveys and the feedback loop
- Reader Survey
- The good and the bad – what works?
- Shaping future relationships

What does the student population of Oxford look like?

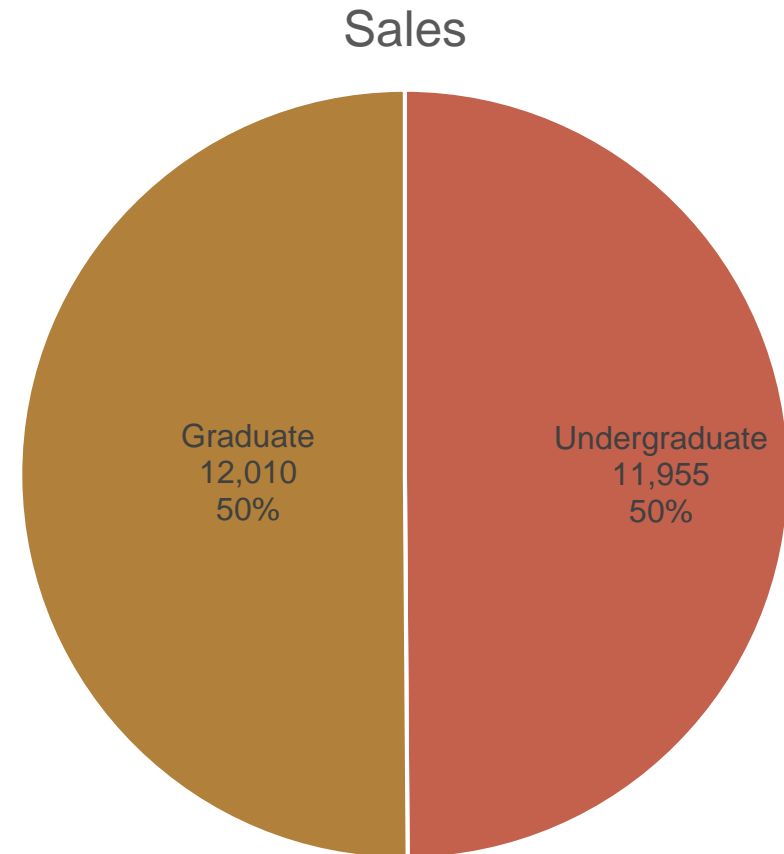
- The UG-PG Divide
- Types of Degrees
- Types of Students

Students in Oxford

- More PG than UG and the number will only grow

There are more than ten types of PG degree types – MSc, MPhil, MSt , DPhil, BSc, BPhil, MBA, MFA...

- More Diverse --> Course levels, Age, Race, Country, Life experiences...
- Often More Mature
- Often stay longer than UG Students
- Student Parents
- Part-time Students



First word that comes to your mind when you think "Bodleian Libraries"

- Go to [slido.com](https://www.slido.com)

- **#2178131**

What do you think students think of when they think "Bodleian Libraries"

- Go to [slido.com](https://www.slido.com)

- **#2178131**

Hear directly from your students!



Reader Survey 2022

- Frankie Wilson and the Bodleian did a great job on it
- The majority of comments were negative
- The vast majority of negative comments (46%) were about physical libraries, with half commenting on the poor WiFi and 40% on uncomfortable study environment. Access to resources also received a high number (327) of negative comments – primarily relating to opening hours and borrowing policies - as did the contents of our collections (249). Other issues were COVID-19 response, communication, the Collegiate library system, resource discovery (SOLO), support services, and staff.
- The positive comments were roughly equally split between staff (136), General love for the libraries (105), contents of our collections (86), physical libraries (82), the Collegiate library system (72) and access to resources – notably Scan & Deliver (40).

We want...

- Clear Communication
- Carrels
- Specialised Study Spaces
- Comfortable and Well-Ventilated Study Space
- 24/7 Access
- Learning Opportunities – Induction Workshops
- Dogs

We love...

- You! The Staff is a big favourite
- Scan and deliver
- Beautiful accessible libraries and tools
- Silence
- Access to EVERYTHING

A woman with dark hair, a white dot on her forehead, and a red mark on her cheek. She is looking upwards with a distressed expression, her right hand raised with fingers spread. She is wearing a red jacket with a patterned sleeve. The background is a dimly lit room with a ceiling light fixture.

**EVERYTHING
EVERYWHERE ALL AT
ONCE
Bodleian Edition**

What's next?

COMMUNICATION

COMPASSION

CREATIVITY

CLOSURE