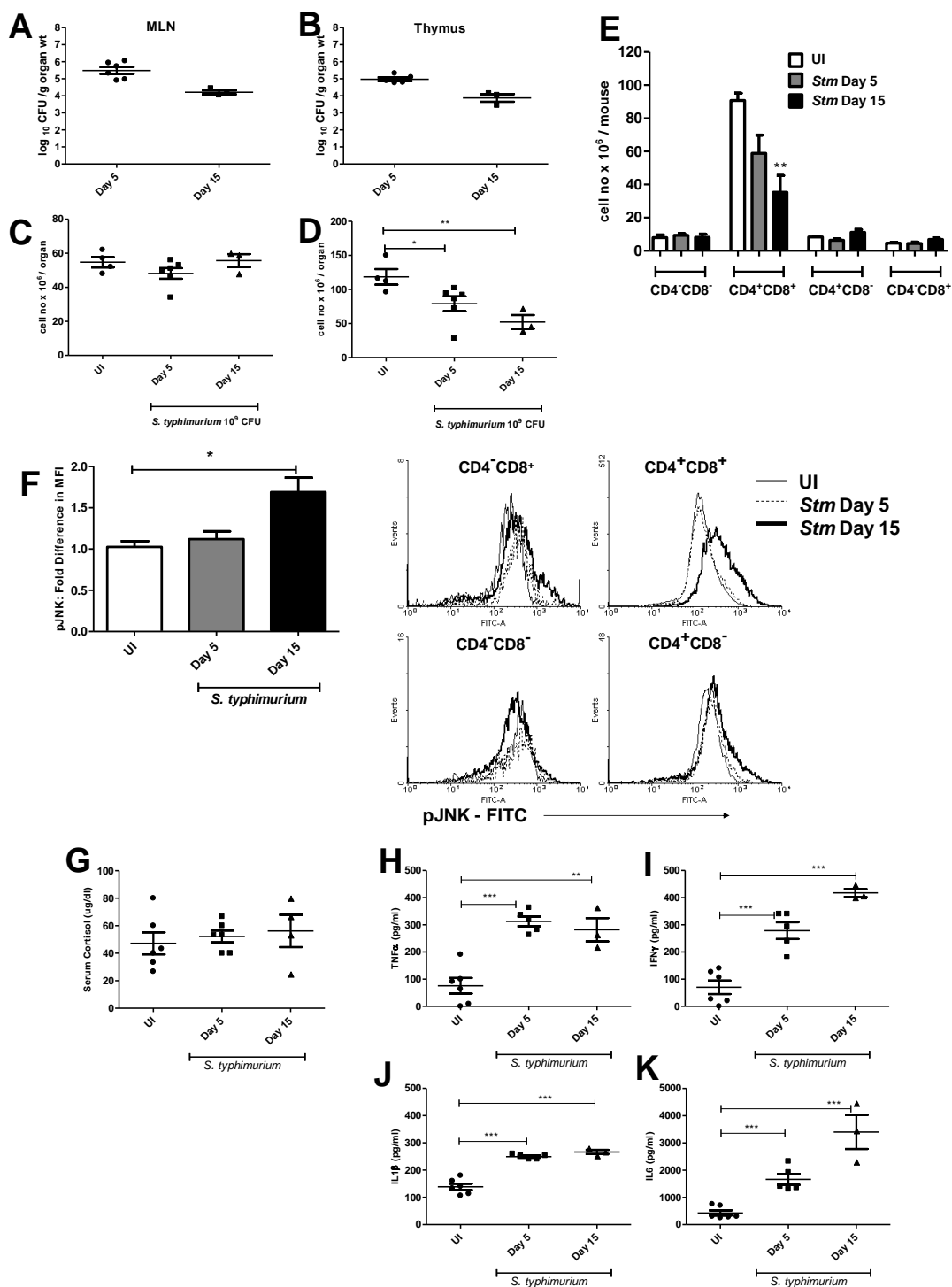
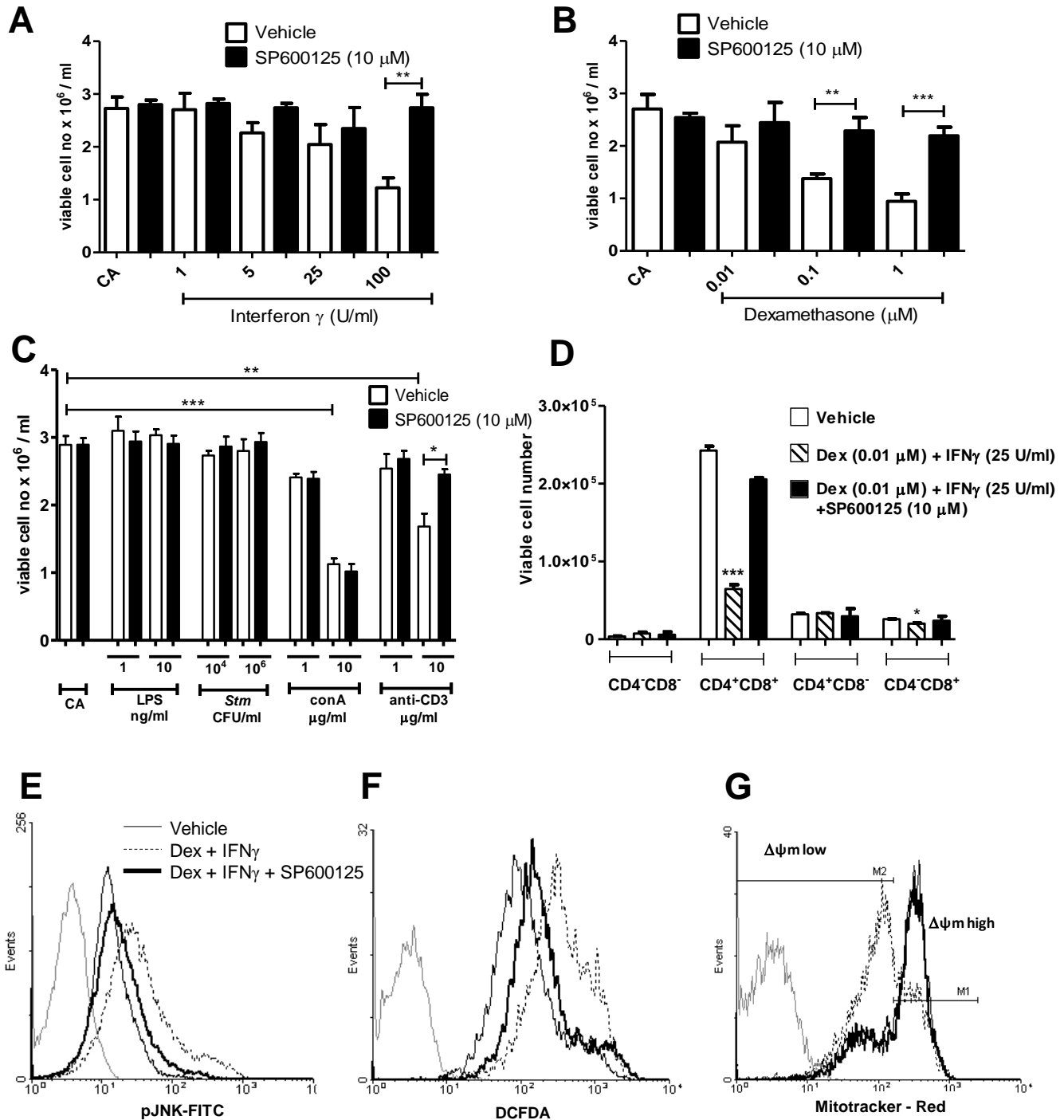


Supporting Information Figure 1



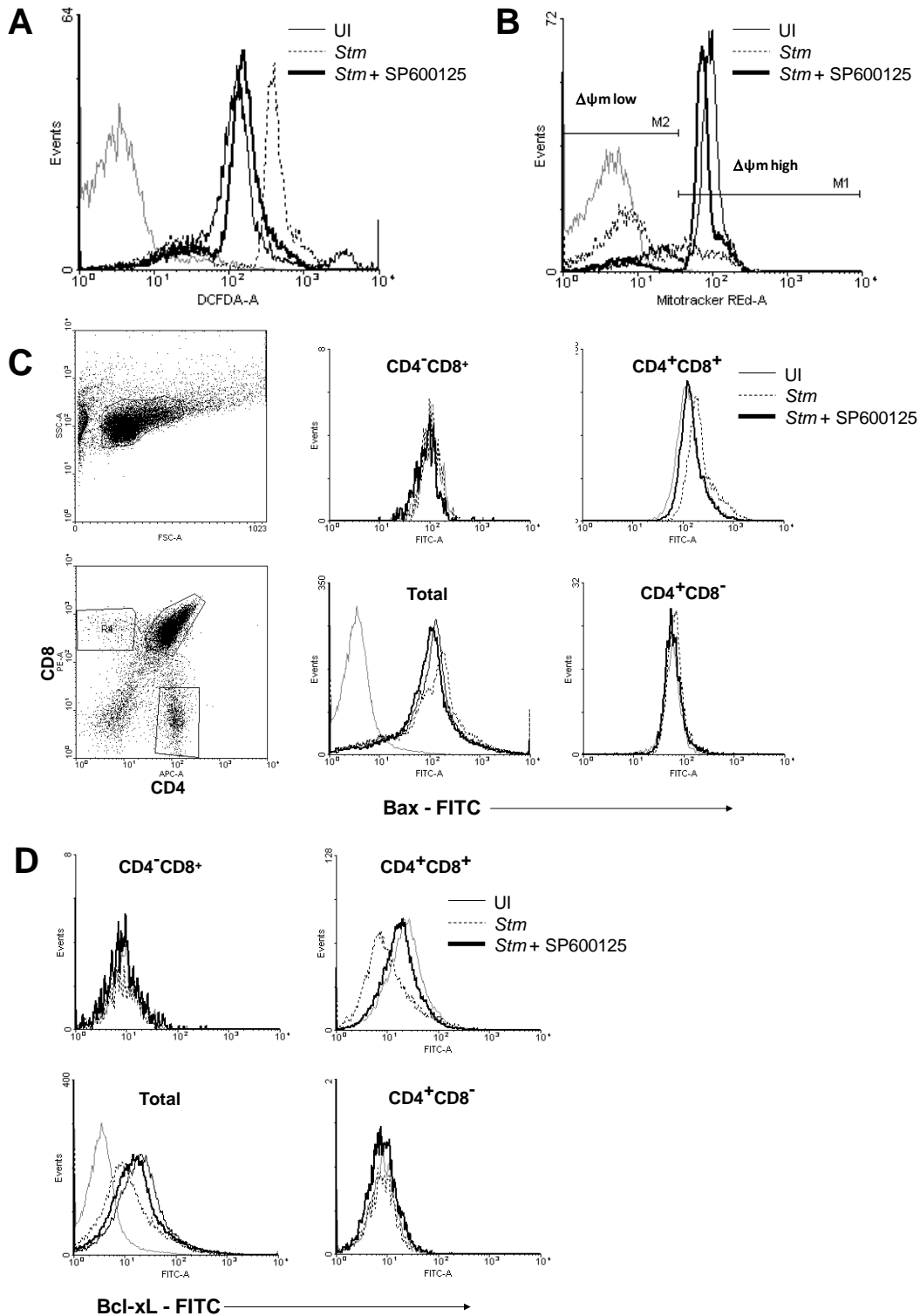
Supporting Information Figure 1. *S. typhimurium* infection induced thymic atrophy occurs in the *Nramp*-sufficient 129/SvJ mice. 129/SvJ mice were infected orally with 5×10^8 CFU *S. typhimurium* and were sacrificed on days 5 and 15. (A and B) MLN and Thymic CFU, (C and D) viable cell number of MLN and thymi, (E) thymocyte subsets and (F) pJNK amounts in the thymus were assessed. (G) Cortisol, (H) TNF α , (I) IFN γ , (J) IL1 β and (K) IL6 amounts in sera were detected by ELISA. The data are representative of two independent experiments with 3-6 mice per group. Student's *t* test was performed and *, ** and *** represent $p \leq 0.05$, 0.01 and 0.001 respectively.

Supporting Information Figure 2



Supporting Information Figure 2. Thymocytes are susceptible to different in vitro death signals via JNK activation. Thymocytes from C57BL/6 mice were isolated and cultured in vitro with indicated compounds. The viability of cells upon treatment with (A) IFN γ , (B) Dex and (C) LPS, ConA, anti-CD3 and *S. typhimurium* with or without SP600125 (10 μ M) was assessed by Trypan blue. (D) The number of thymocytes in indicated subsets upon combination treatment of thymocytes with Dex (0.01 μ M) and IFN γ (25 U/ml) with or without SP600125 was studied. Representative FACS plots for (E) intracellular pJNK amounts, (F) ROS and (G) mitochondrial potential are shown. The data are representative of two independent experiments with 3 mice per group and statistics calculated with respect to vehicle treated control. Student's *t* test was performed and *, ** and *** represent $p \leq 0.05$, 0.01 and 0.001 respectively.

Supporting Information Figure 3



Supporting Information Figure 3. Representative FACS plots demonstrating modulation of ROS, mitochondrial potential, Bax, Bcl-xL during infection and treatment with JNK inhibitor. Thymocytes from C57BL/6 mice infected with *S. typhimurium* and treated with SP600125 were isolated. Representative FACS plots for (A) Intracellular ROS and (B) Mitochondrial potential are shown. Gating strategy and representative FACS plots for analysis of (C) Bax and (D) Bcl-xL amounts in total and indicated thymocyte subsets is depicted. Data are representative of two independent experiments with 3-5 mice per group.