




A 16S rRNA Gene and Draft Genome Database for the Murine Oral Bacterial Community

 Susan Joseph,^a Joseph Aduse-Opoku,^a Ahmed Hashim,^b Eveliina Hanski,^c Ricarda Streich,^a Sarah C. L. Knowles,^c Amy B. Pedersen,^d  William G. Wade,^{a,e} Michael A. Curtis^a

^aCentre for Host-Microbiome Interactions, Faculty of Dentistry, Oral and Craniofacial Sciences, King's College London, London, UK

^bDepartment of Biomedical Sciences, College of Dentistry, King Faisal University, Saudi Arabia

^cDepartment of Zoology, University of Oxford, Oxford, UK

^dInstitute of Evolutionary Biology, School of Biological Sciences, University of Edinburgh, Edinburgh, UK

^eDepartment of Microbiology, Forsyth Institute, Cambridge, Massachusetts, USA

ABSTRACT A curated murine oral microbiome database to be used as a reference for mouse-based studies has been constructed using a combination of bacterial culture, 16S rRNA gene amplicon, and whole-genome sequencing. The database comprises a collection of nearly full-length 16S rRNA gene sequences from cultured isolates and draft genomes from representative taxa collected from a range of sources, including specific-pathogen-free laboratory mice, wild *Mus musculus domesticus* mice, and formerly wild wood mouse *Apodemus sylvaticus*. At present, it comprises 103 mouse oral taxa (MOT) spanning four phyla—*Firmicutes*, *Proteobacteria*, *Actinobacteria*, and *Bacteroidetes*—including 12 novel undescribed species-level taxa. The key observations from this study are (i) the low diversity and predominantly culturable nature of the laboratory mouse oral microbiome and (ii) the identification of three major murine-specific oral bacterial lineages, namely, *Streptococcus danieliae* (MOT10), *Lactobacillus murinus* (MOT93), and *Gemella* species 2 (MOT43), which is one of the novel, still-unnamed taxa. Of these, *S. danieliae* is of particular interest, since it is a major component of the oral microbiome from all strains of healthy and periodontally diseased laboratory mice, as well as being present in wild mice. It is expected that this well-characterized database should be a useful resource for *in vitro* experimentation and mouse model studies in the field of oral microbiology.

IMPORTANCE Mouse model studies are frequently used in oral microbiome research, particularly to investigate diseases such as periodontitis and caries, as well as other related systemic diseases. We have reported here the details of the development of a curated reference database to characterize the oral microbial community in laboratory and some wild mice. The genomic information and findings reported here can help improve the outcomes and accuracy of host-microbe experimental studies that use murine models to understand health and disease. Work is also under way to make the reference data sets publicly available on a web server to enable easy access and downloading for researchers across the world.

KEYWORDS 16S rRNA, *Streptococcus danieliae*, *Apodemus sylvaticus*, database, mouse models, *Mus musculus*, oral microbiology, oral microbiome

Mouse models play a crucial role in microbiome research, particularly in the investigation of the interactions between the host and the resident microbiota in health and disease (1, 2). Oral microbial population characterization in wild-type and mutant laboratory mouse strains have ranged from historical studies that involved identification of cultured isolates based on phenotypic characterization (3–6) to more recent molecular based studies focused on 16S rRNA gene sequencing (2, 7, 8). These studies

Citation Joseph S, Aduse-Opoku J, Hashim A, Hanski E, Streich R, Knowles SCL, Pedersen AB, Wade WG, Curtis MA. 2021. A 16S rRNA gene and draft genome database for the murine oral bacterial community. *mSystems* 6:e01222-20. <https://doi.org/10.1128/mSystems.01222-20>.

Editor Nicola Segata, University of Trento

Copyright © 2021 Joseph et al. This is an open-access article distributed under the terms of the [Creative Commons Attribution 4.0 International license](https://creativecommons.org/licenses/by/4.0/).

Address correspondence to Susan Joseph, susan.m.joseph@kcl.ac.uk.

Received 25 November 2020

Accepted 26 January 2021

Published 9 February 2021

have all demonstrated the mouse bacterial community to have a simple and relatively stable composition, with a major proportion of cultivable components, particularly in the specific-pathogen-free (SPF) laboratory mouse strains.

Despite this inherent simplicity of the mouse oral microbiome, it has significant relevance as a model to investigate and understand the mechanisms of human oral diseases such as periodontitis (7, 9, 10). A primary reason for this has been the parallels observed in the nature of the initiation and development of disease in experimental studies, specifically the development of a dysbiotic microbiome (characterized by increased total microbial loads) and soft tissue destruction with gingival inflammation (2, 11, 12), which are often comparable to that seen among humans (13, 14). Also, since the microbial genera observed are often similar to the predominant ones seen in humans (15), these animal models are also useful for understanding host-microbiota interactions and homeostasis mechanisms in health and disease.

However, the lack of adequate information in the public domain about mouse oral bacterial isolates from various sources, as well as poorly curated 16S rRNA gene sequences in the public databases, may lead to non- or misidentification of the organisms, which could thereby affect the outcome of such studies. A host-specific curated reference database for murine oral microbial populations in the public domain would enable researchers to accurately, reliably, and consistently identify the bacterial communities in experimental samples. Databases provide an improved and more accurate characterization of bacterial communities and allow easy comparison of work from different laboratories.

Similar databases have already been developed to characterize the oral microbiome in humans (15, 16) and other mammalian host species such as cats and dogs (17, 18). More recently, researchers have characterized and generated a database for the mouse intestinal bacterial community (19, 20), as well as chronicled the collection of genes in the mouse gut metagenome (21).

Here, we report a curated and well-characterized database of the oral bacterial population in mice, with representative genome sequences, which should greatly benefit researchers as a reference for oral microbiome studies in health and disease using laboratory mouse models.

RESULTS

Assignment of mouse oral taxa. To date, 325 16S rRNA gene sequences from murine oral bacterial isolates have been analyzed and found to constitute 103 mouse oral taxa (MOT) (Table 1 and Fig. 1). Twelve of the assigned MOTs (12.36%) represent novel, previously unidentified species that need further characterization in order to be assigned a formal species name. Representative 16S rRNA gene sequences for these novel taxa have been submitted to the National Center for Biotechnology Information (NCBI) database and are available under accession numbers [MN095260](#) to [MN095271](#). The 16S rRNA gene sequences for all the isolates analyzed in this study are available to download under accession numbers [MW175535](#) to [MW175859](#).

Diversity of the murine oral bacterial community. The mouse oral taxa are distributed across four bacterial phyla (Fig. 1): *Firmicutes* (54 taxa), *Proteobacteria* (27 taxa), *Actinobacteria* (14 taxa), and *Bacteroidetes* (8 taxa). The *Firmicutes* phylum, having the greatest number of taxa, is represented by species of the *Streptococcus*, *Staphylococcus*, *Lactobacillus*, *Gemella*, *Enterococcus*, *Aerococcus*, *Jeotgalicoccus*, *Granulicatella*, *Facklamia*, *Dubosiella*, and *Ileibacterium* genera. *Proteobacteria* are comprised of members of the *Enterobacter*, *Klebsiella*, *Shigella*, *Escherichia*, *Pasteurella*, *Providencia*, *Proteus*, *Actinobacillus*, *Acinetobacter*, *Neisseria*, *Rodentibacter*, *Rhodanobacter*, and *Devosia* genera. The *Bacteroidetes* phylum comprises the *Bacteroides*, *Parabacteroides*, *Porphyromonas*, *Helicobacter*, *Muribaculum*, and *Dysgonomonas* genera, while *Actinobacteria* are represented by the *Micrococcus*, *Sanguibacter*, *Microbacterium*, *Rothia*, *Corynebacterium*, *Actinomyces*, *Cutibacterium*, and *Turicella* genera. At the species level, the species *Streptococcus danieliae* MOT10 was most frequently observed among the samples tested. The periodontal pathogen *Porphyromonas gingivalis*, albeit never isolated in the laboratory

TABLE 1 Details of bacterial species and MOTs included in the murine oral microbiome database^a

Taxonomy ID	Species ID	Type strain	16S rRNA gene accession no.	Source host
MOT01	<i>Staphylococcus xylosus</i>	ATCC 29971	D83374	<i>Mus musculus</i> /Apodemus sylvaticus
MOT02	<i>Staphylococcus saprophyticus</i>	ATCC 15305	NR_115607	<i>Mus musculus</i> /Apodemus sylvaticus
MOT03	<i>Staphylococcus lentus</i>	ATCC 29070	D83370	<i>Mus musculus</i> /Apodemus sylvaticus
MOT04	<i>Staphylococcus argenteus</i>	MSHR1132	FR821777	<i>Mus musculus</i>
MOT05	<i>Staphylococcus sciuri</i>	DSM 20345T	AJ421446	<i>Mus musculus</i> /Apodemus sylvaticus
MOT06	<i>Staphylococcus epidermidis</i>	ATCC 14990	D83363	<i>Mus musculus</i>
MOT07	<i>Staphylococcus warneri</i>	ATCC 27836	L37603	<i>Mus musculus</i>
MOT08	<i>Staphylococcus nepalensis</i>	DSM 15150	AJ517414	<i>Mus musculus</i> /Apodemus sylvaticus
MOT09	<i>Staphylococcus arlettae</i>	ATCC 43957	AB009933	<i>Mus musculus</i> /Apodemus sylvaticus
MOT10	<i>Streptococcus danieliae</i>	DSM 22233	GQ456229	<i>Mus musculus</i>
MOT11	<i>Streptococcus acidominimus</i>	LMG 17755	JX986969	<i>Mus musculus</i>
MOT12	<i>Streptococcus</i> species 1		MN095260	<i>Mus musculus</i>
MOT13	<i>Streptococcus</i> species 2		MN095261	<i>Mus musculus</i>
MOT14	<i>Streptococcus</i> species 3		MN095262	Apodemus sylvaticus
MOT15	<i>Streptococcus</i> species 4		MN095263	<i>Mus musculus</i>
MOT16	<i>Lactobacillus taiwanensis</i>	BCRC 17755	EU487512	<i>Mus musculus</i>
MOT17	<i>Lactobacillus animalis</i>	NBRC 15882	AB326350	<i>Mus musculus</i> /Apodemus sylvaticus
MOT18	<i>Gemella palaticanis</i>	CCUG 39489	Y17280	<i>Mus musculus</i>
MOT19	<i>Shigella flexneri</i>	ATCC 29903	X96963	<i>Mus musculus</i>
MOT20	<i>Enterococcus faecalis</i>	JCM 5803	AB012212	<i>Mus musculus</i>
MOT21	<i>Enterococcus gallinarum</i>	ATCC 49573	AF039900	<i>Mus musculus</i>
MOT22	<i>Muribacter muris</i>	NCTC 12432	AY362894	<i>Mus musculus</i>
MOT23	<i>Aerococcus viridans</i>	NCTC 8251	AB680262	<i>Mus musculus</i>
MOT24	<i>Micrococcus aloeverae</i>	DSM 27472	KF524364	<i>Mus musculus</i>
MOT25	<i>Pasteurella</i> species 1		MN095264	Apodemus sylvaticus
MOT26	<i>Acinetobacter johnsonii</i>	ATCC 17909	Z93440	<i>Mus musculus</i>
MOT27	<i>Parabacteroides goldsteinii</i>	WAL 12034	AY974070	<i>Mus musculus</i>
MOT28	<i>Dysgonomonas mossii</i>	CCUG 43457	AJ319867	<i>Mus musculus</i>
MOT29	<i>Bacteroides acidifaciens</i>	JCM 10556	AB021164	<i>Mus musculus</i>
MOT30	<i>Microbacterium paludicola</i>	DSM 16915	AJ853909	<i>Mus musculus</i>
MOT31	<i>Neisseria</i> species 1		MN095265	Apodemus sylvaticus
MOT32	<i>Granulicatella</i> species 1		MN095266	Apodemus sylvaticus
MOT33	<i>Gemella</i> species 1		MN095267	Apodemus sylvaticus
MOT34	<i>Escherichia fergusonii</i>	ATCC 35469	AF530475	<i>Mus musculus</i>
MOT35	<i>Enterococcus casseliflavus</i>	ATCC 700327	AF039903	<i>Mus musculus</i>
MOT36	<i>Aerococcus urinaeequi</i>	ATCC 29723	D87677	<i>Mus musculus</i>
MOT37	<i>Micrococcus yunnanensis</i>	YIM 65004	FJ214355	<i>Mus musculus</i>
MOT38	<i>Jeotgalicoccus nanhaiensis</i>	JSM 077023	FJ237390	<i>Mus musculus</i>
MOT39	<i>Citrobacter koseri</i>	ATCC 27028	HQ992945	<i>Mus musculus</i>
MOT40	<i>Rothia nasimurium</i>	CCUG 35957	AJ131121	<i>Mus musculus</i>
MOT41	<i>Proteus mirabilis</i>	ATCC 29906	DQ885256	<i>Mus musculus</i>
MOT42	<i>Sanguibacter inulinus</i>	NCFB 3024	X79451	<i>Mus musculus</i>
MOT43	<i>Gemella</i> species 2		MN095268	<i>Mus musculus</i>
MOT44	<i>Pasteurella</i> species 2		MN095269	Apodemus sylvaticus
MOT45	<i>Streptococcus</i> species 5		MN095270	Apodemus sylvaticus
MOT46	<i>Streptococcus cuniculi</i>	CCUG 65085	HG793791	Apodemus sylvaticus
MOT47	<i>Dysgonomonas oryzae</i>	JCM 16859	AB547446	<i>Mus musculus</i>
MOT48	<i>Escherichia coli</i>	ATCC 11775	X80725	<i>Mus musculus</i>
MOT49	<i>Enterobacter cloacae</i>	ATCC 13047	AJ251469	<i>Mus musculus</i>
MOT50	<i>Enterobacter</i> species 1		MN095271	<i>Mus musculus</i>
MOT51	<i>Lactobacillus johnsonii</i>	ATCC 33200	AJ002515	<i>Mus musculus</i>
MOT52	<i>Lactobacillus gasserii</i>	ATCC 33323	AF519171	<i>Mus musculus</i>
MOT53	<i>Micrococcus luteus</i>	DSM 20030	AJ536198	<i>Mus musculus</i>
MOT54	<i>Micrococcus endophyticus</i>	DSM 17945	EU005372	<i>Mus musculus</i>
MOT55	<i>Escherichia albertii</i>	CCUG 46494	AJ508775	<i>Mus musculus</i>
MOT56	<i>Sanguibacter suarezii</i>	ATCC 51766	X79452	<i>Mus musculus</i>
MOT57	<i>Sanguibacter keddieii</i>	ATCC 51767	X79450	<i>Mus musculus</i>
MOT58	<i>Staphylococcus aureus</i>	ATCC 12600	L36472	<i>Mus musculus</i>
MOT59	<i>Staphylococcus caprae</i>	ATCC 35538	AB009935	<i>Mus musculus</i>
MOT60	<i>Staphylococcus haemolyticus</i>	ATCC 29970	X66100	<i>Mus musculus</i>
MOT61	<i>Staphylococcus gallinarum</i>	ATCC 35539	D83366	<i>Mus musculus</i> /Apodemus sylvaticus
MOT62	<i>Staphylococcus vitulinus</i>	ATCC 51145	AB009946	<i>Mus musculus</i> /Apodemus sylvaticus

(Continued on next page)

TABLE 1 (Continued)

Taxonomy ID	Species ID	Type strain	16S rRNA gene accession no.	Source host
MOT63	<i>Streptococcus salivarius</i>	ATCC 7073	AY188352	<i>Mus musculus</i>
MOT64	<i>Streptococcus vestibularis</i>	NCTC 12167	AY188353	<i>Mus musculus</i>
MOT65	<i>Enterobacter hormaechei</i>	ATCC 49162	AJ508302	<i>Mus musculus</i>
MOT66	<i>Enterobacter cancerogenus</i>	ATCC 33241	Z96078	<i>Mus musculus</i>
MOT67	<i>Enterobacter asburiae</i>	ATCC 35953	AB004744	<i>Mus musculus</i>
MOT68	<i>Enterobacter ludwigii</i>	CCUG 51323	AJ853891	<i>Mus musculus</i>
MOT69	<i>Enterobacter mori</i>	LMG 25706	EU721605	<i>Mus musculus</i>
MOT70	<i>Staphylococcus simiae</i>	LMG 22723	AY727530	<i>Mus musculus</i>
MOT71	<i>Staphylococcus capitis</i>	ATCC 27840	L37599	<i>Mus musculus</i>
MOT72	<i>Staphylococcus saccharolyticus</i>	ATCC 14953	L37602	<i>Mus musculus</i>
MOT73	<i>Staphylococcus pasteurii</i>	ATCC 51129	AB009944	<i>Mus musculus</i>
MOT74	<i>Staphylococcus hominis</i>	ATCC 27844	X66101	<i>Mus musculus</i>
MOT75	<i>Staphylococcus petrasii</i>	CCUG 62727	JX139845	<i>Mus musculus</i>
MOT76	<i>Staphylococcus devriesei</i>	CCUG 58238	FJ389206	<i>Mus musculus</i>
MOT77	<i>Staphylococcus succinus</i>	ATCC 700337	AF004220	<i>Mus musculus</i> /Apodemus sylvaticus
MOT78	<i>Staphylococcus cohnii</i>	ATCC 29974	D83361	<i>Mus musculus</i> /Apodemus sylvaticus
MOT79	<i>Staphylococcus equorum</i>	ATCC 43958	AB009939	<i>Mus musculus</i> /Apodemus sylvaticus
MOT80	<i>Staphylococcus fleuretti</i>	ATCC BAA-274	AB233330	<i>Mus musculus</i> /Apodemus sylvaticus
MOT81	<i>Staphylococcus stepanovicii</i>	CCM 7717	GQ222244	<i>Mus musculus</i> /Apodemus sylvaticus
MOT82	<i>Shigella dysenteriae</i>	ATCC 13313	X96966	<i>Mus musculus</i>
MOT83	<i>Actinomyces bowdenii</i>	DSM 15435	AJ234039	Wild <i>Mus musculus</i>
MOT84	<i>Providencia alcalifaciens</i>	ATCC 9886T	AJ301684	Wild <i>Mus musculus</i>
MOT85	<i>Providencia rustigianii</i>	DSM 4541	AM040489	Wild <i>Mus musculus</i>
MOT86	<i>Turicella otitidis</i>	DSM 8821	X73976	<i>Mus musculus</i>
MOT87	<i>Bacteroides thetaiotaomicron</i>	NCTC 10582	NR_074277	<i>Mus musculus</i>
MOT88	<i>Klebsiella oxytoca</i>	ATCC 13182	AF129440	<i>Mus musculus</i>
MOT89	<i>Klebsiella pneumoniae</i>	ATCC 13883	X87276	<i>Mus musculus</i>
MOT90	<i>Klebsiella variicola</i>	DSM 15968	AJ783916	<i>Mus musculus</i>
MOT91	<i>Corynebacterium stationis</i>	DSM 20302	FJ172667	<i>Mus musculus</i>
MOT92	<i>Facklamia tabacinensis</i>	ATCC 700838	Y17820	<i>Mus musculus</i>
MOT93	<i>Lactobacillus murinus</i>	ATCC 35020	AJ621554	<i>Mus musculus</i>
MOT94	<i>Ileibacterium valens</i>	DSM 103668T	NR_156909	<i>Mus musculus</i>
MOT95	<i>Rhodanobacter glycinis</i>	NBRC 105007	EU912469	<i>Mus musculus</i>
MOT96	<i>Rodentibacter pneumotropicus</i>	ATCC 35149	M75083	<i>Mus musculus</i>
MOT97	<i>Dubosiella newyorkensis</i>	DSM 103457T	NR_156910	<i>Mus musculus</i>
MOT98	<i>Helicobacter ganmani</i>	CCUG 43526	AF000221	<i>Mus musculus</i>
MOT99	<i>Muribaculum intestinale</i>	DSM 28989	KR364784	<i>Mus musculus</i>
MOT100	<i>Porphyromonas gingivalis</i>	ATCC 33277	AF414809	<i>Mus musculus</i>
MOT101	<i>Devosia riboflavina</i>	ATCC 9526	AJ549086	<i>Mus musculus</i>
MOT102	<i>Cutibacterium acnes</i>	ATCC 6919	X53218	<i>Mus musculus</i>
MOT103	<i>Corynebacterium mastitidis</i>	DSM 44356	Y09806	Wild <i>Mus musculus</i>

^aAccession numbers are provided for 16S rRNA gene sequences of the type strains of named species.

from the murine swab samples, was identified among the amplicon sequencing data of the 16S rRNA gene. The species has been observed in the wild mouse species and occasionally in experimental SPF laboratory mice, but never in healthy, untreated SPF mice.

Laboratory versus wild mouse oral bacterial community. The SPF laboratory mice included in this study represented diverse background strains (C57BL/6J, C3H/Orl, CD-1, BALB/c) and were also obtained from a range of diverse sources (commercially purchased, in-house colonies, conventionalized from germfree mice, and genetic knockouts). In addition, samples were also collected from the formerly wild wood mouse *Apodemus sylvaticus* and the wild house mouse *Mus musculus domesticus*. Beta-diversity analyses of the oral microbial populations of the sampled mice (Fig. 2) showed distinct separation in the clustering of all three groups of mice. However, a number of shared species have also been observed between them, including *Lactobacillus murinus* (MOT93) and *Streptococcus danieliae* (MOT10) (Table 1).

Culture versus 16S rRNA gene community profiling. Custom reference data sets for community profiling analysis were constructed using the current version of the database and used for data analysis. Analysis of the Illumina MiSeq amplicon sequencing data (the V1-V2 region of the 16S rRNA gene) in SPF mouse samples using the

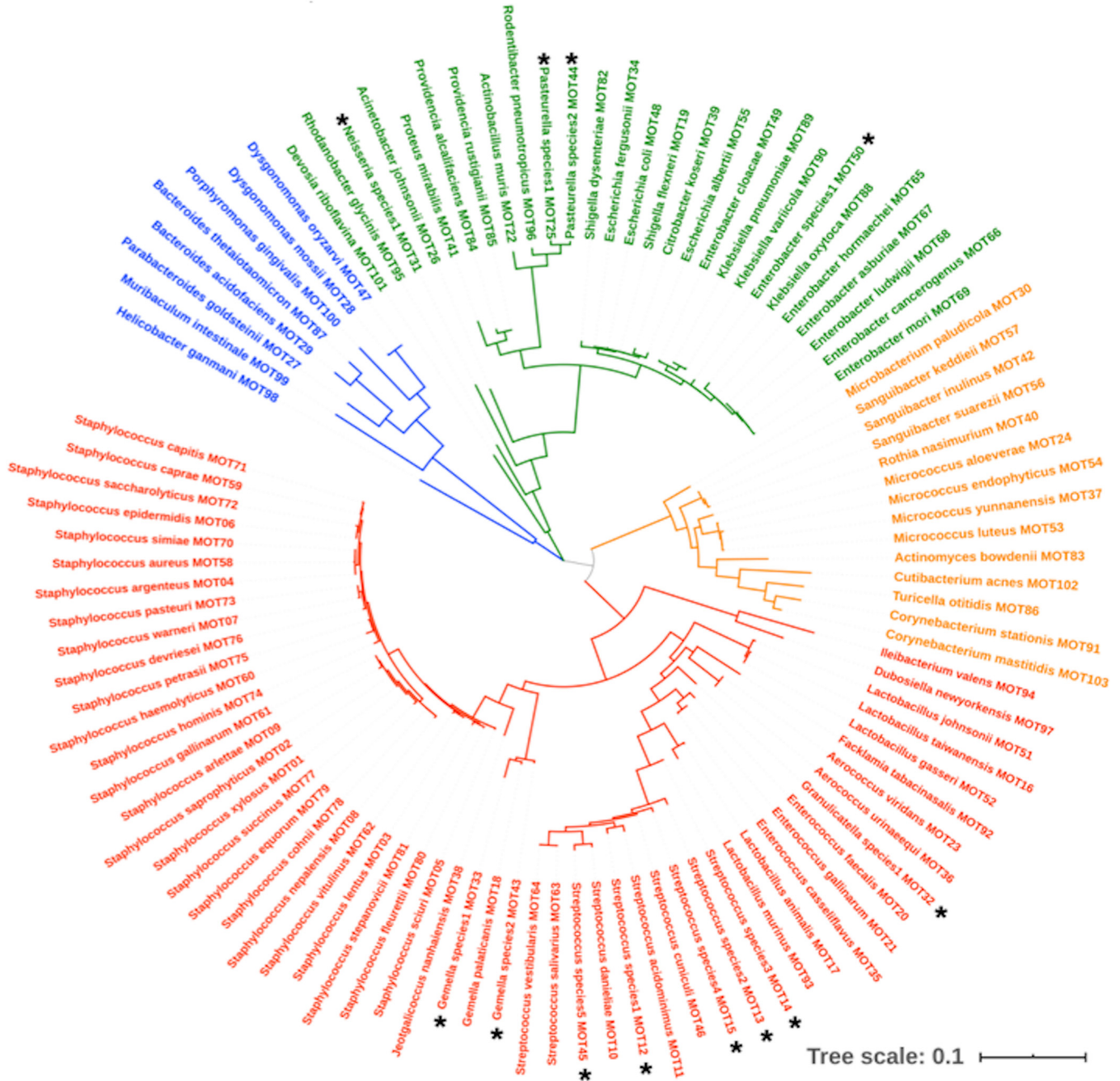


FIG 1 Taxonomic diversity in the murine oral microbiome database. The maximum-likelihood tree describes the phylogenetic relationships between the 103 mouse oral taxa (MOTs) identified in the murine oral microbiome database. Black asterisks indicate the MOTs of novel, previously unidentified species. Phylum clusters are color coded: *Firmicutes* (red), *Proteobacteria* (green), *Bacteroidetes* (blue), and *Actinobacteria* (orange).

custom reference data set revealed that 98% of the total number of reads could be assigned to species level. Further comparative analysis of culturing data with this amplicon sequencing data set revealed a significant consensus in the SPF mouse samples, with all of the cultured species being represented at comparable levels with the next-generation sequencing (NGS) data (Fig. 3). Among the wild *Mus musculus domestica* samples, 95% of the reads were identified to the species level using the custom reference data set, even though very little consensus has been observed with the culturing data in terms of abundance of individual species (Fig. 4). This could be explained by the fact that the species that show significantly higher abundance in the NGS data set (*Muribacter muris*, *Neisseria* species 1, and *Porphyromonas gingivalis*) are

Downloaded from <http://msystems.asm.org/> on March 3, 2021 at University of Oxford

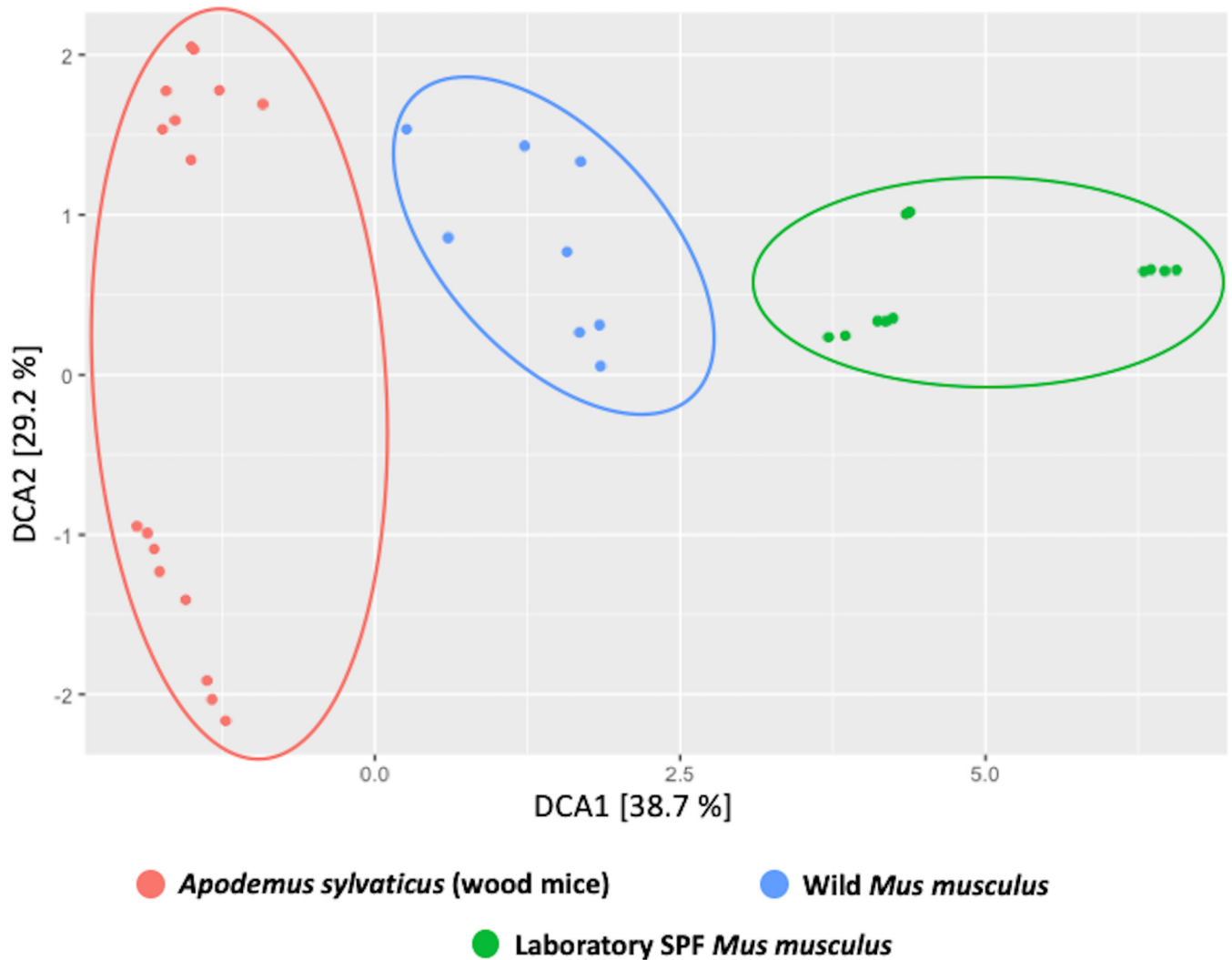


FIG 2 Beta-diversity analyses of the oral microbiome of various mouse species. Beta-diversity analyses of oral microbial populations of SPF laboratory mice (green), wild *Mus musculus domesticus* mice (blue), and wood mice *Apodemus sylvaticus* (red) using the 16S rRNA gene amplicon community data targeting the V1-V2 region were performed.

predominantly slow growers and therefore could have been missed being detected in the 48-h culturing protocol followed in this study.

In the samples from the formerly wild wood mouse *Apodemus sylvaticus*, the proportion of reads positively identified using the custom data set fell to 83%, even though a higher consensus between culturing and NGS was observed compared to the wild *Mus musculus domesticus*, despite the increased diversity (Fig. 5).

Current versions of the reference data sets have been constructed for both the mothur and DADA2 pipelines and are available to download at <https://figshare.com/s/2470f05ab77cdf40b2f8>.

Mouse oral bacterial genomes. Draft genomes of 55 murine oral bacterial isolates have been generated, sourced from all the mouse groups included in this study (Table 2). Representative genome sequences have been uploaded to the NCBI bacterial genome database and are publicly available at NCBI BioProject [PRJNA671681](https://www.ncbi.nlm.nih.gov/bioproject/PRJNA671681). After assembly, the genomes had a mean contig number of 135 (± 134) and GC% ratios ranging from 28 to 73%.

Predominant bacterial genera in laboratory mice. The following three genera were found to be of particular interest due to their presence in a wide range of samples tested.

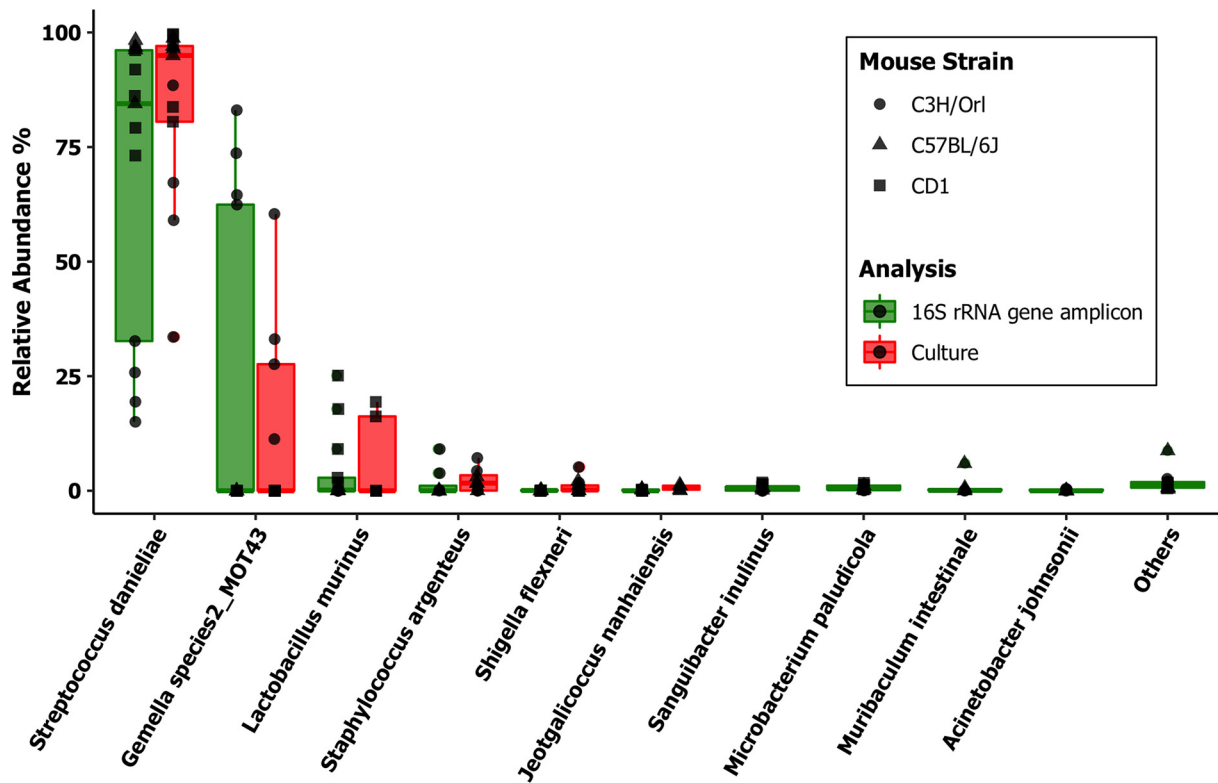


FIG 3 Relative abundances in the SPF laboratory mice ($n=13$). We compared oral microbial population analyses in three background strains of SPF mice by laboratory culture (red) and Illumina MiSeq 16S rRNA gene amplicon sequencing (green) amplifying the V1-V2 region of the 16S rRNA gene. The amplicon sequencing data were analyzed using DADA2 v1.8 against a custom-made taxonomy reference data set from this database. The top 10 most relatively abundant taxa identified after normalization of counts are listed.

(i) **Streptococcus.** *S. danieliae* MOT10 was the most commonly detected species in all SPF laboratory mouse groups from multiple sources and mouse strains (Fig. 6A). This species was also isolated from the wild *Mus musculus domesticus*. *Streptococcus* species 5 MOT45 was isolated from the wood mouse *A. sylvaticus* (Fig. 5) and was found to be very closely related to, but distinct from, *S. danieliae* (16S rRNA gene sequence similarity, 98.4%) forming a murine *S. danieliae* cluster.

Some isolates of *S. acidominimus* MOT11 were observed in a group of SPF mice belonging to the BALB/c strain, whereas a few novel streptococcal species were also isolated in single occurrences (*Streptococcus* species 1, 2, and 3; MOTs 12 to 14).

(ii) **Lactobacillus.** With only two exceptions, all of the lactobacilli in mice were identified as *L. murinus* MOT93 (Fig. 6B). The two exceptions belonged to the *L. taiwanensis-gasseri-johnsonii* cluster at >99% identity and could not be distinguished based on the 16S rRNA gene sequence analysis. *In silico* DNA-DNA hybridization gene sequence analysis identified them as *L. johnsonii* MOT51 at 72.1% genome identity.

(iii) **Gemella.** All *Gemella* isolates from laboratory mice were found to belong to a novel, as yet unnamed, species, *Gemella* species 2 MOT43 (Fig. 6C). The nearest phylogenetic neighbor is the canine oral species, *Gemella palaticanis* at 97.4% 16S rRNA gene sequence identity. Another single, novel *Gemella* isolate was observed in *A. sylvaticus* wood mice and designated *Gemella* species 1 MOT33.

DISCUSSION

We report here the details of a curated murine database to represent the diversity of the oral microbiome in laboratory and wild mouse populations.

The low diversity of the mouse oral bacterial community, especially in SPF laboratory mice, has particularly stood out in this characterization. The presence of such a

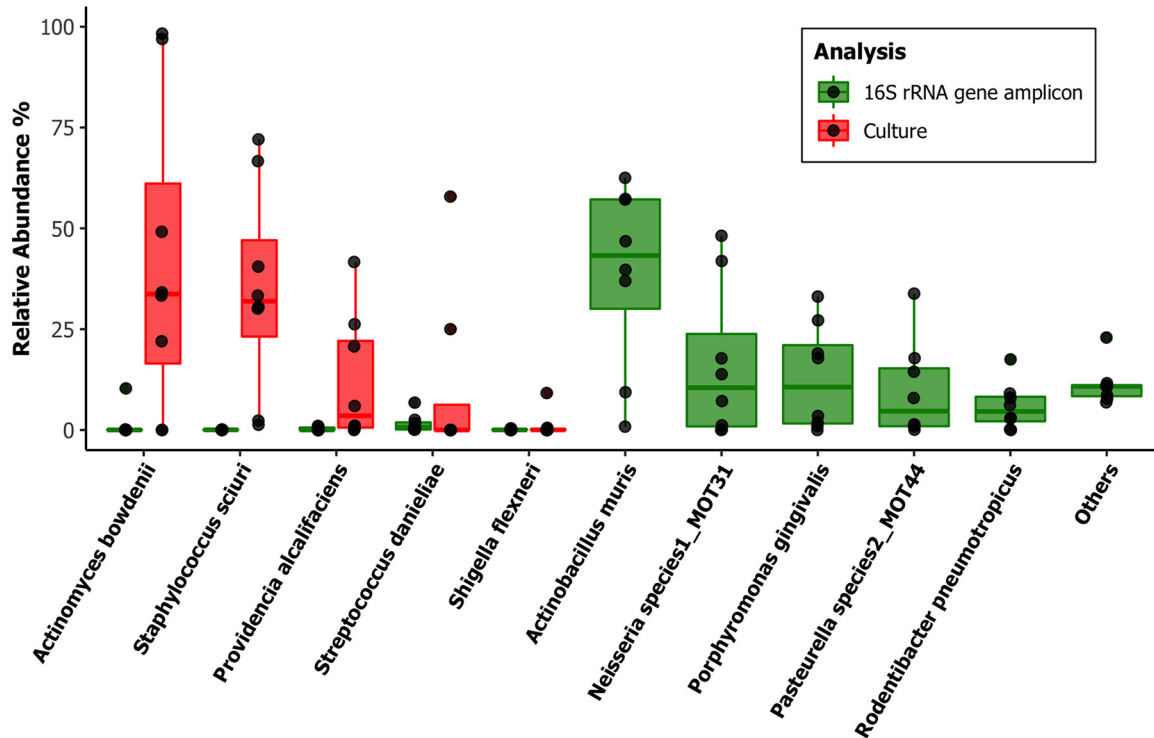


FIG 4 Relative abundances in the wild house mouse *Mus musculus domesticus* ($n=8$). We compared oral microbial population analyses in the wild house mouse *Mus musculus domesticus* by laboratory culture (red) and Illumina MiSeq 16S rRNA gene amplicon sequencing (green) amplifying the V1-V2 region of the 16S rRNA gene. The amplicon sequencing data were analyzed using DADA2 v1.8 against a custom-made taxonomy reference data set from this database. The top 10 most relatively abundant taxa identified after normalization of counts are listed.

small and specifically targeted population makes accurate species level identification especially significant for improving the outcomes of studies. In addition, the collection of draft genomes of the representative MOTs from the database is also of great benefit for microbial population studies in mice. This repository of genomes should enable the generation of quality reference data sets for metagenomic and metatranscriptomic analyses of mouse-based oral studies.

A comparative analysis of the culture and 16S rRNA gene community profiling data has further confirmed the low diversity of the lab mouse oral microbiome (see Fig. S1 in the supplemental material), which is dominated by four species-level taxa. We have reported here only a representative subset of the samples we have sequenced in order to demonstrate the development of the database. However, over the course of multiple experimental studies, we have shown the consistency in the results of these population analyses (2, 7). The diversity of oral species-level taxa, in comparison, was found to be higher in the wild mouse species. Such variations in the microbial diversity and load within host species has been reported in the gut microbiome of other organisms and has largely been attributed to the influence of diet and environment (22, 23).

Another observation of this study has been the variations observed between different strains of the laboratory mice; we have previously also observed this between batches of the same strain of mice obtained from commercial sources (unpublished data), which has also been reported in some older studies (24). Recently, Abusleme et al. also reported the variations observed in the oral microbial communities in C57BL/6 mice purchased from two major commercial animal suppliers and the increased stability of a particular type of population when the mice were cohoused (8).

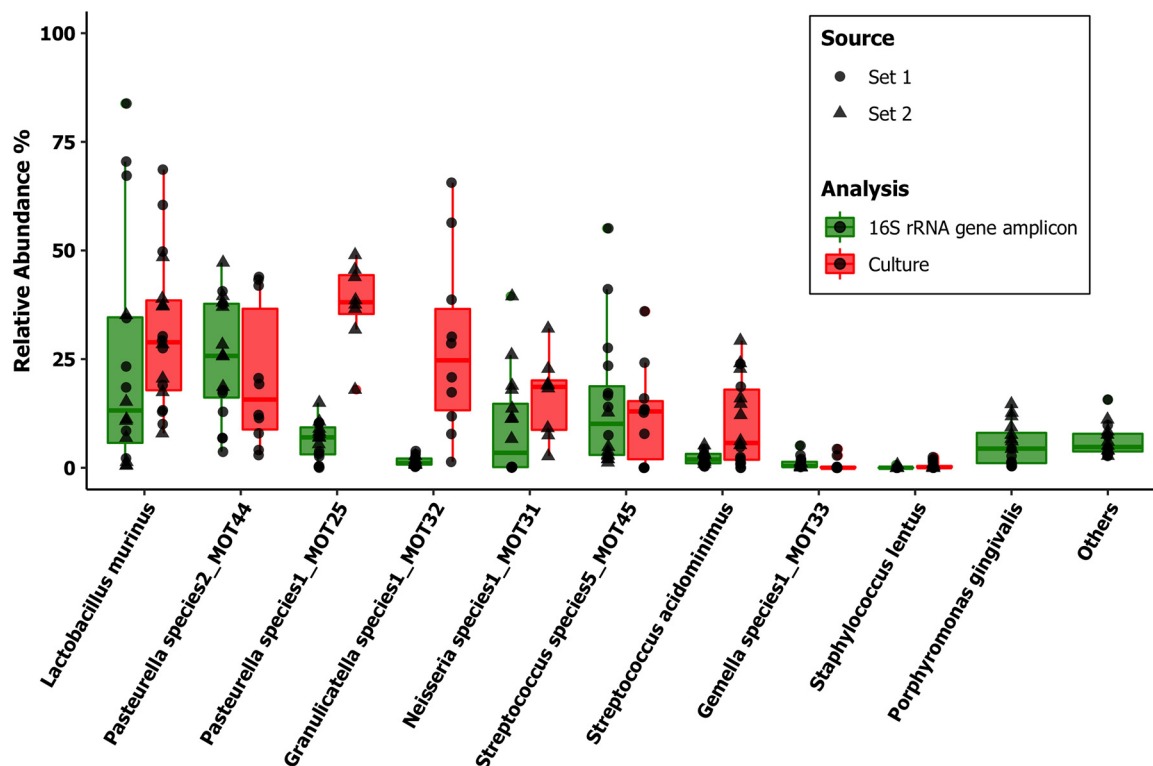


FIG 5 Relative abundances in the wood mouse *Apodemus sylvaticus* ($n=16$). We compared oral microbial population analyses in the formerly wild wood mouse *Apodemus sylvaticus*, sampled from two sources (sets 1 and 2), by laboratory culture (red) and Illumina MiSeq 16S rRNA gene amplicon sequencing (green) amplifying the V1-V2 region of the 16S rRNA gene. The amplicon sequencing data were analyzed using DADA2 v1.8 against a custom-made taxonomy reference data set from this database. The top 10 most relatively abundant taxa identified after normalization of counts are listed.

This raises a very important issue of having a well-curated reference database, as well as internal controls, to ensure accuracy in results in microbiome studies.

Among the three predominant host-specific MOTs identified, *S. danieliae* MOT10 is of particular interest due to its dominance of the oral bacterial community in the SPF laboratory mice. A recently proposed species of the *Streptococcus* genus, *S. danieliae* MOT 10 was originally described based on a murine cecal isolate for which the authors suggested an oral/upper respiratory tract origin (25). There have been few other reports of the organism so far (26–28), all of them of murine origin. The organism has also been reported to be one of the key drivers in the establishment of the oral microbial community in laboratory SPF mice after the eruption of teeth (8). *Gemella* species 2 has been isolated from oral samples of multiple strains of laboratory mice and needs further characterization to be taxonomically identified as an official bacterial species. Of these three species, *L. murinus* is the only species that was part of the Altered Schaedler Formula, the community of microbes that were used to originally colonize gnotobiotic mice to develop SPF laboratory mice as we know them today (29, 30). Similar examples of host specificity have also been reported in other mouse microbiomes, including the colonization of segmented filamentous bacteria (31) and *Muribaculaceae* (19) in the mouse gut microbiome. This specificity also strongly indicates to the phenomenon of host-microbe coevolution and fitness characteristics (32).

In addition, there has been an increasing interest in recent times in the relevance of wild rodent models in research (33, 34), particularly for understanding natural progressions of certain diseases in relation to the microbiome. A study involving microbial transfer of wild mice into laboratory mice has demonstrated the role of the natural or

TABLE 2 Details of the draft microbial genomes sequenced as part of the development of the murine oral microbiome database^a

Sample ID	Species ID	Taxonomy ID	Total length (bp)	GC%	Source	Accession no.
19428wA1_WT6	<i>Staphylococcus xylosus</i>	MOT01	2806698	32.68	SPF C3H/Orl	JADGLO000000000
19428wB1_WM06	<i>Staphylococcus saprophyticus</i>	MOT02	2920674	32.48	<i>Apodemus sylvaticus</i>	JADGLJ000000000
3_3BalbC2O2_S3	<i>Staphylococcus lentus</i>	MOT03	2925394	32.36	SPF BALB/C	JADGLT000000000
19428wC1_HT5	<i>Staphylococcus lentus</i>	MOT03	2910603	31.73	SPF C3H/Orl	JADGLE000000000
19428wG1_AE2	<i>Staphylococcus lentus</i>	MOT03	2856564	31.81	SPF C57BL/6J	JADGMD000000000
ACT.1	<i>Staphylococcus sciuri</i>	MOT05	2737620	32.5	SPF C3H/Orl	JADGMB000000000
19428wE1_BL01	<i>Staphylococcus sciuri</i>	MOT05	2833136	32.42	SPF C57BL/6J	JADGMG000000000
19428wF1_P912	<i>Staphylococcus warneri</i>	MOT07	2628448	32.57	SPF C3H/Orl	JADGMF000000000
19428wH1_IOV5	<i>Staphylococcus arlettae</i>	MOT09	2600982	33.35	SPF C3H/Orl	JADGMC000000000
1_1BalbC1O2_S1	<i>Streptococcus danieliae</i>	MOT10	1356823	44.6	SPF BALB/c	JADGLV000000000
STR.1	<i>Streptococcus danieliae</i>	MOT10	1969143	44.5	SPF C3H/Orl	JADGKG000000000
CCW311.1	<i>Streptococcus danieliae</i>	MOT10	1616067	45.03	SPF C57BL/6J	JADGKO000000000
5_7CXCR22O2_S5	<i>Streptococcus danieliae</i>	MOT10	2927540	43.29	SPF BALB/c	JADGLY000000000
19428wB2_HT4	<i>Streptococcus acidominimus</i>	MOT11	2221121	42.77	SPF C3H/Orl	JADGLI000000000
6_8CXCR23O2_S6	<i>Streptococcus acidominimus</i>	MOT11	2509022	43.7	SPF BALB/c	JADGLR000000000
19428wC2_LYSM12	<i>Streptococcus species 1</i>	MOT12	2417981	40.73	SPF C3H/Orl	JADGLD000000000
19428wD3_AN2	<i>Streptococcus species 2</i>	MOT13	2324918	42.8	SPF C3H/Orl	JADGKY000000000
CIP106318T.1	<i>Gemella palaticanis</i>	MOT18	1720464	27.55	Culture collection, type strain	JADGKN000000000
19428wH2_1568	<i>Shigella flexneri</i>	MOT19	5100000	50.71	SPF C3H/Orl	JADGKR000000000
19428wA3_CC11	<i>Enterococcus faecalis</i>	MOT20	6434324	39.02	SPF C3H/Orl	JADGLM000000000
19428wB3_C2	<i>Enterococcus gallinarum</i>	MOT21	3661725	40.12	SPF C3H/Orl	JADGLH000000000
ENT.1	<i>Enterococcus gallinarum</i>	MOT21	3793521	40	SPF C3H/Orl	JADGKL000000000
19428wC3_WT12	<i>Muribacter muris</i>	MOT22	2520282	44.93	SPF C3H/Orl	JADGLC000000000
7_18CXCR221ANO_S7	<i>Muribacter muris</i>	MOT22	2535311	45.96	SPF BALB/c	JADGLQ000000000
19428wE3_DK2	<i>Micrococcus aloeverae</i>	MOT24	2559064	72.93	SPF C57BL/6J	JADGLX000000000
19428wF3_WM03	<i>Pasteurella species 1</i>	MOT25	2264212	39.91	<i>Apodemus sylvaticus</i>	JADGKV000000000
19428wG3_P14	<i>Parabacteroides goldsteinii</i>	MOT27	6779962	43.44	SPF C3H/Orl	JADGKT000000000
19428wE4_P11	<i>Dysgonomonas mossii</i>	MOT28	4110280	37.31	SPF C3H/Orl	JADGKW000000000
8_33DSS_C5_S8	<i>Bacteroides acidifaciens</i>	MOT29	5228201	44.3	SPF C3H/Orl	JADGLP000000000
19428wH3_P2318	<i>Bacteroides acidifaciens</i>	MOT29	5116387	43.26	SPF C3H/Orl	JADGKQ000000000
19428wA4_P1012	<i>Microbacterium paludicola</i>	MOT30	2809652	70.53	SPF C3H/Orl	JADGLL000000000
19428wB4_WF04	<i>Neisseria species 1</i>	MOT31	2568531	53.59	<i>Apodemus sylvaticus</i>	JADGLG000000000
19428wC4_WM01	<i>Granulicatella species 1</i>	MOT32	2003757	33.14	<i>Apodemus sylvaticus</i>	JADGLB000000000
19428wG4_IOV6	<i>Micrococcus yunnanensis</i>	MOT37	2475752	73.07	SPF C3H/Orl	JADGKS000000000
19428wE5_W307	<i>Jeotgalicoccus nanhaiensis</i>	MOT38	2244448	41.43	SPF C57BL/6J	JADGLW000000000
19428wH4_BL23	<i>Citrobacter koseri</i>	MOT39	4821534	53.81	SPF C57BL/6J	JADGKP000000000
19428wA5_irhom_31	<i>Rothia nasimurium</i>	MOT40	2677034	59.02	SPF C57BL/6J	JADGLK000000000
19428wB5_irhom_Sw	<i>Proteus mirabilis</i>	MOT41	3939005	38.79	SPF C57BL/6J	JADGLF000000000
DSM100099.1	<i>Sanguibacter inulinus</i>	MOT42	4257809	70.83	Culture Collection; Type Strain	JADGKM000000000
19428wG2_WT2a	<i>Gemella species 2</i>	MOT43	1404407	30.33	SPF C3H/Orl	JADGKU000000000
GH3.1	<i>Gemella species 2</i>	MOT43	1563132	28.2	SPF C3H/Orl	JADGKK000000000
GL1.1	<i>Gemella species 2</i>	MOT43	1299399	30.25	SPF C3H/Orl	JADGKJ000000000
19428wA2_WM07	<i>Streptococcus species 5</i>	MOT45	1714730	41.26	<i>Apodemus sylvaticus</i>	JADGLN000000000
19428wD2_WM131	<i>Streptococcus cuniculi</i>	MOT46	2407100	42.7	<i>Apodemus sylvaticus</i>	JADGKZ000000000
19428wD4_HM13	<i>Escherichia coli</i>	MOT48	5021976	50.62	SPF C3H/Orl	JADGMH000000000
19428wE2_CC3	<i>Lactobacillus johnsonii</i>	MOT51	1903680	34.48	SPF C3H/Orl	JADGKX000000000
4_5BalbC4O2_S4	<i>Staphylococcus aureus</i>	MOT58	2825768	33.69	SPF BALB/c	JADGLS000000000
19428wD1_P36	<i>Staphylococcus aureus</i>	MOT58	2692071	32.75	SPF C3H/Orl	JADGLA000000000
STF.1	<i>Staphylococcus aureus</i>	MOT58	2699934	32.8	SPF C3H/Orl	JADGKH000000000
GW2.1	<i>Staphylococcus capitis</i>	MOT71	2450948	32.8	SPF C3H/Orl	JADGMA000000000
WMus004.1	<i>Actinomyces bowdenii</i>	MOT83	3174558	71.17	Wild <i>Mus musculus domesticus</i>	JADGKF000000000
WMus003.1	<i>Providencia alcalifaciens</i>	MOT84	3909646	41.88	Wild <i>Mus musculus domesticus</i>	JADGLZ000000000
2_2BalbC1BO2_S2	<i>Lactobacillus murinus</i>	MOT93	2341418	40.54	SPF BALB/c	JADGLU000000000
19428wF2_HT12	<i>Lactobacillus murinus</i>	MOT93	2254694	39.68	SPF C3H/Orl	JADGME000000000
LAC.1	<i>Lactobacillus murinus</i>	MOT93	2089346	40.1	SPF C3H/Orl	JADGKI000000000

^aThe 55 draft genomes are available to download from BioProject (PRJNA671681), while the individual accession numbers have been provided in the table itself.

wild microbiota in disease resistance and protective immune mechanisms (35). Further, a more recent study by the same group also showed that laboratory mice bred from such wild mice (referred to as wildlings) exhibited the elevated microbial diversity of the parent wild mice accompanied by a stability to perturbations such as antibiotics and diet, implying that a natural or wild immunity could be more

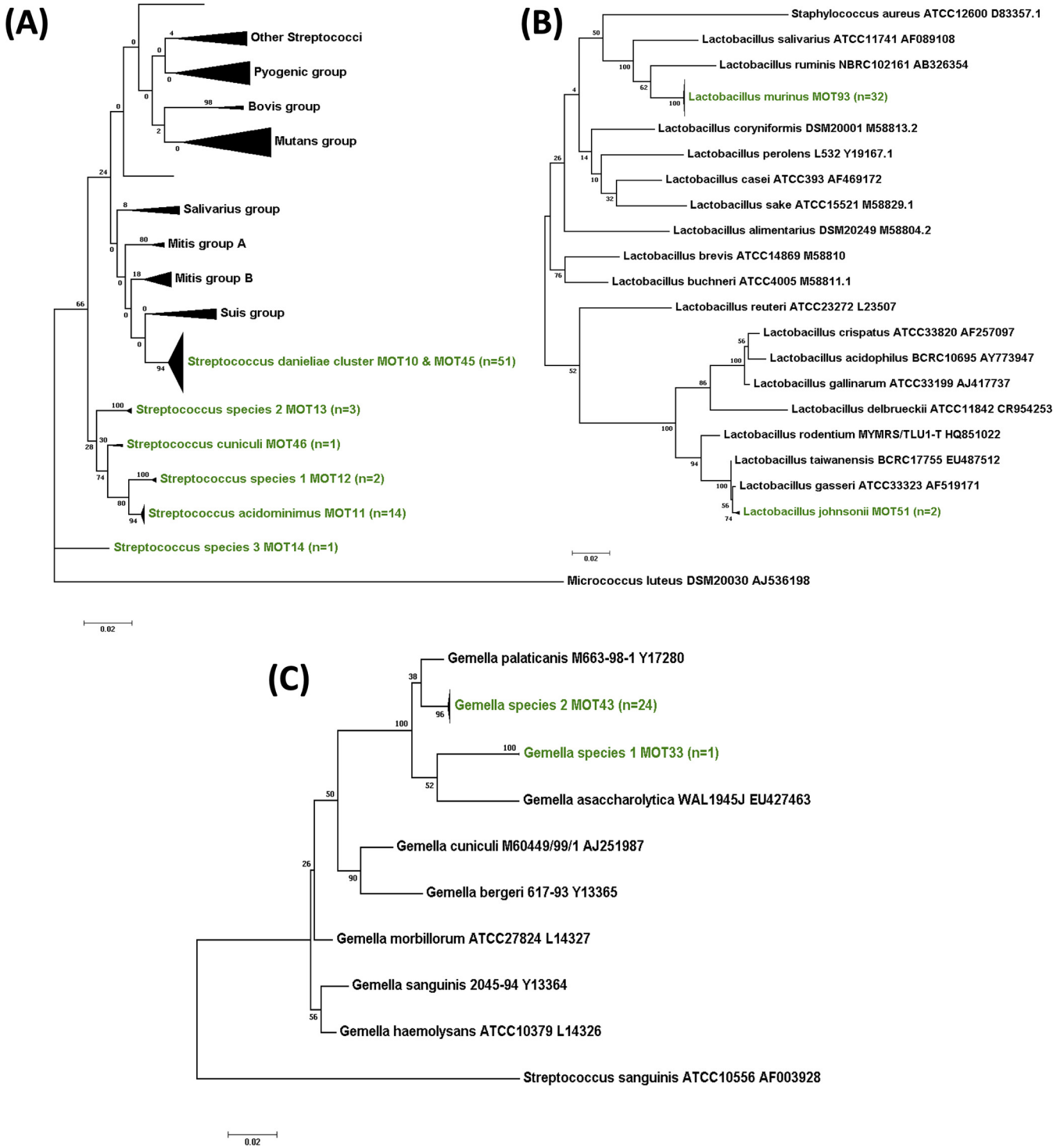


FIG 6 Phylogenetic diversity of the predominant bacterial genera in laboratory mice. Maximum-likelihood phylogenetic trees represent the diversity in murine oral bacterial isolates for the three most abundant genera: *Streptococcus* (A), *Lactobacillus* (B), and *Gemella* (C). Each tree has been rooted with an outlier and constructed using 100 bootstrap replicates. The branches in green refer to the taxonomic IDs in each genus of the murine isolates from this study.

comparable to that seen in the diversity of human illnesses (36). Hence, we considered it pertinent to include the bacterial taxa from some of these wild mouse samples (formerly wild wood mice [*Apodemus sylvaticus*] and wild *Mus musculus domesticus* mice) in the database, in addition to cultured oral isolates which could be used for *in vivo* and *in vitro* experimentations in the future. We fully appreciate that at present we

report this from a limited number of sources and therefore representing only a fraction of the actual diversity observed in the wild, but we have plans to further expand this resource with the inclusion of more diverse sources based on availability.

It is also pertinent here to point out the presence of certain taxa in this murine oral microbial population potentially of intestinal origin, which could be attributed to the coprophagic behavior in murine populations. Compared to the mouse intestinal bacterial collection database, we notice the presence of some shared taxa with our database, particularly species belonging to the order *Lactobacillales* (19). Equally, oral bacteria might also be found in the gut, particularly lactobacilli because of their aciduric nature. However, despite this overlap, the oral microbiome in mice remains distinct, far simpler, and less diverse than in the murine gut microbiome (see Fig. S2 and S3), as we have demonstrated by amplicon sequencing and characterization of a limited subset of murine fecal samples.

It is necessary to stress that this study primarily describes the development of a framework for this murine oral microbial database, which by its nature remains a work in progress. Work is under way with collaborators at the Forsyth Institute, Cambridge, MA, to make the final version of this database publicly available as the Mouse Oral Microbiome Database (MOMD), on the lines of the Human Oral Microbiome Database (HOMD) (16). This will enable the addition of sequences from other researchers in the field; these will be curated and made publicly available. Meanwhile, the cultured isolates analyzed for this database can be made available to interested researchers on request by contacting the authors. Further work is also being undertaken using sequence analysis and cloning to characterize the uncultured as well as the identified but unnamed novel species, including their taxonomic nomenclature, for the further expansion of the database.

We hope that this should enable researchers across the world to access and develop suitable reference data sets for both culture and culture independent studies of the murine oral microbiome.

MATERIALS AND METHODS

Mouse sampling and ethics. All animal experiments were conducted in accredited facilities in accordance with the UK Animals (Scientific Procedures) Act 1986 (Home Office license number 7006844). Fieldwork for the wild *Mus musculus domesticus* work was approved by the Animal Welfare Ethical Review Body (AWERB) at the Department of Zoology, University of Oxford.

Conventional SPF C3H/Orl and BALB/c mice were maintained in individually ventilated cages (IVCs) at the animal care facilities of Queen Mary University of London. Conventional SPF C57BL/6J mice were maintained in IVCs at the animal care facilities of King's College London. SPF C57BL/6J and CD-1 mice were also purchased commercially from Charles River Laboratories UK. In all, 191 SPF mice have been sampled over the course of 6 years for various experimental studies, and isolates obtained from the swabbing of these mice have been used for the analysis and development of this database.

One set (set 1) of formerly wild, now laboratory-bred, *A. sylvaticus* wood mice sampled in 2014 ($n = 20$) was originally established from wild wood mice that were live trapped from the UK woodlands and are now housed at the University of Edinburgh. Wild wood mice sampled in January 2017 ($n = 39$) were housed at the facilities at Fera Science (Sand Hutton, York), and the colony began with wild-caught wood mice from the grounds of the Institute; these animals had been laboratory-bred for 20 years and are referred to as set 2.

Wild house mice (*Mus musculus domesticus* [$n = 21$]) were sampled on the island of Skokholm in Wales, UK. These mice were captured temporarily in traps, sampled, and then released back into the wild.

Bacterial culturing. The murine oral cavity was swabbed for 30 s, using sterile fine-tip rayon swabs (VWR International), while the animal was held in a scruff. The swab was then placed in a tube containing 100 μ l of reduced John's transport medium (see Text S1 in the supplemental material). Swabs from wild mice were stored at -20°C before being transported on ice to the laboratory. Serial dilutions of the suspension were spread onto blood agar plates containing 5% defibrinated horse blood (TCS Biosciences, UK) and incubated for aerobic and anaerobic (80% N_2 , 10% H_2 , and 10% CO_2) growth at 37°C for 48 h in a Don Whitley anaerobic chamber. The CFUs of predominant cultivable bacteria on each plate were counted. On an average, four to six different colony types could be identified on each blood agar plate. Every different colony morphology type observed was isolated and purified by subculture by restreaking the samples twice on fresh blood agar plates. Once the purity was established, the cultured isolate was cryopreserved for storage in Microbank bead tubes (Prolab Diagnostics) in duplicate. Briefly, a loopful of pure culture was aseptically transferred into the

manufacturer's cryopreservative liquid containing beads, the tube was inverted four to five times for emulsification and allowed to stand for 2 min. Any excess liquid was aseptically removed, and the bead tube was then frozen at -70°C .

16S rRNA gene amplification and sequencing. Genomic DNA for each isolated bacterial strain was extracted by using a GenElute bacterial DNA kit (Sigma-Aldrich), following the Gram-positive protocol according to manufacturer's instructions, and used as a template for PCR. The 16S rRNA gene in the bacterial strains was amplified using modified versions of the universal 27FYM and 1492R 16S rRNA gene primers with built-in redundancies (see Text S2), using Phusion Green Hot Start II High Fidelity PCR Master Mix (Thermo Fisher Scientific). PCR conditions were as follows: initial denaturation at 98°C for 30 s; followed by 25 cycles of 98°C for 10 s, 47°C for 45 s, and 72°C for 30 s; followed in turn by a final extension at 72°C for 10 min. The amplified products were purified using Macherey-Nagel NucleoSpin gel and PCR Clean-Up (Fisher Scientific), followed by Sanger sequencing using the universal M13 primers M13 uni(-21) and M13 rev(-29) (Eurofins Genomics). For certain samples, internal primers for the 16S rRNA gene (342R, 357F, 519R, 907R, 926F, 1100R, 1114F, and 1392R) were also used for sequencing to improve the sequence coverage accuracy. All primer sequences have been provided in Text S2.

Allocation of mouse oral taxa. The forward and reverse sequences for each sample were assembled using the CAP3 assembly tool (37). Sequences were identified by BLAST interrogation of the NCBI nucleotide database. A sequence identity threshold of 98.5% was used for assignment to species, which is consistent with current recommendations (38) and the value used previously for the related human and canine oral databases (17, 18). Sequences were aligned by means of the CLUSTALW algorithm in Bioedit (39), and maximum-likelihood phylogenetic trees for each genus were constructed using MEGA7 (40) with 100 bootstrap replicates. Each species-level taxon was assigned a MOT number. For taxa that were not identified as validly proposed species at 98.5% identity, a novel species-level designation was assigned as "Genusname_species1," and a new MOT number was allocated. For isolates that could not be definitively distinguished by 16S rRNA gene sequence analysis, each of the possible matching species was assigned a unique MOT ID in order to ensure maximum diversity capture. Assignment of taxa was also carried out using 16S rRNA gene amplicons selected from the MiSeq sequencing data that were not assigned an ID based on the existing reference database and then following the same BLAST protocol as described above. Visualization and annotation of the final phylogenetic tree of the identified 103 MOTs was performed using the web interface of iTOL v4 (41).

MiSeq 16S rRNA gene sequencing library preparation and DNA sequence analysis. Whole genomic DNA was extracted from the above swabs using the DNeasy PowerSoil kit (Qiagen) according to the manufacturer's instructions. Cell lysis was performed in the PowerBead tubes provided with the kit by bead beating on a vortex at maximum speed for 20 min. PCRs were performed with Phusion Green Hot Start II High Fidelity PCR Master Mix (Thermo Scientific) targeting the V1-V2 variable regions of the 16S rRNA gene using fusion primers 27F-YM (AGAGTTTGATYMTGGCTCA) and 338R-R (TGCTGCTCCCGTAGRAG) combined with MiSeq adaptors and barcodes to achieve a double indexing system. The PCR conditions were as follows: initial denaturation for 5 min at 95°C ; followed by 25 cycles of 95°C for 45 s, 53°C for 45 s, and 72°C for 45 s; followed in turn by a final extension of 72°C for 5 min. The amplified PCR products were cleaned and normalized in equimolar amounts by using a Sequal Prep normalization plate kit (Thermo Fisher Scientific). Extraction kit controls and PCR negative controls were included in the amplification plates, as well as sequencing pools. Pooled amplicons were sequenced at the Barts and the London Genome Centre using an Illumina MiSeq 2×250 flow cell for paired-end sequencing. The generated reads were quality checked, filtered, trimmed, denoised, dereplicated, and assembled into amplicon sequence variants (ASVs) using the DADA2 v1.8 pipeline (42). The assembled ASVs were then assigned taxonomy at the genus and species level using a custom-formatted reference database constructed using the taxa included in this database. Compared to the mean of total reads in the murine swab samples, the negative controls generated a very low percentage of reads ($<0.1\%$ in the PCR control and $<1\%$ in the kit control). Once this was confirmed, the negative samples were eliminated from further analyses. The generated ASV counts were normalized for sequencing depth by using the median of ratios method in the DeSeq2 (43) package in R, followed by beta-diversity and relative abundance analyses of the microbial population. Graphical analysis and plots were created using the R packages phyloseq (44) and ggplot2 (45). The raw sequencing reads have been uploaded to the NCBI SRA database (accession no. [PRJNA642845](https://www.ncbi.nlm.nih.gov/sra/PRJNA642845)).

Bacterial genome sequencing. A selection of bacterial isolates from the database were cultured, purity checked, and genomic DNA extracted using the GenElute Bacterial Genomic DNA kit (Sigma-Aldrich). These isolates are representatives of the cultured microbial population observed in various murine studies and include multiple candidates of the more commonly observed *Streptococcus*, *Lactobacillus*, and *Staphylococcus* species-level taxa. Genomic DNA libraries were prepared by MicrobesNG UK using Nextera XT Library Prep kit (Illumina, San Diego, CA) and sequenced on the Illumina HiSeq using a 250-bp paired-end protocol. Reads were adapter trimmed using Trimmomatic 0.30 with a sliding window quality cutoff of Q15 (46). *De novo* assembly was performed on samples using SPAdes version 3.7 (47), and contigs were annotated using Prokka 1.11 (48). Further genome analysis and annotation was also performed using the RAST server (<https://rast.nmpdr.org/>) (49). Phylogenetic distance and relatedness of certain isolates were determined using the genome-to-genome distance calculator, in the form of an *in silico* DNA-DNA hybridization (50).

Data availability. The 16S rRNA gene V1-V2 region amplicon sequencing data from this study are available from the NCBI SRA database under accession no. [PRJNA642845](https://www.ncbi.nlm.nih.gov/sra/PRJNA642845). Draft genome sequences of

representative murine oral bacterial isolates are available to download from NCBI BioProject no. [PRJNA671681](https://www.ncbi.nlm.nih.gov/bioproject/PRJNA671681). 16S rRNA gene sequences of the novel, unnamed bacterial isolates from this study are available under NCBI accession numbers [MN095260](https://www.ncbi.nlm.nih.gov/nuccore/MN095260) to [MN095271](https://www.ncbi.nlm.nih.gov/nuccore/MN095271). The 16S rRNA gene sequences for all the isolates analyzed in this study are available under NCBI accession numbers [MW175535](https://www.ncbi.nlm.nih.gov/nuccore/MW175535) to [MW175859](https://www.ncbi.nlm.nih.gov/nuccore/MW175859). Custom taxonomy reference data sets of the database for NGS analysis using mothur and DADA2 pipelines are available to download from <https://figshare.com/s/2470f05ab77cdf40b2f8>.

SUPPLEMENTAL MATERIAL

Supplemental material is available online only.

TEXT S1, DOCX file, 0.01 MB.

TEXT S2, DOCX file, 0.01 MB.

TEXT S3, DOCX file, 0.01 MB.

TEXT S4, DOCX file, 0.01 MB.

FIG S1, TIF file, 2.4 MB.

FIG S2, TIF file, 1.5 MB.

FIG S3, TIF file, 2.7 MB.

ACKNOWLEDGMENTS

This study was funded by the UKRI Medical Research Council (award MR/P012175/2). W.G.W. is supported by NIH-NIDCR (grant R37 DE016937). The wild *Mus musculus* work was funded by a NERC fellowship NEL011867/1 to S.C.L.K. The funders had no role in study design, data collection and interpretation, or the decision to submit the work for publication.

We thank D. Randall and F. Filomena for providing access to their murine bacterial isolates for inclusion of data in this study. We thank Melanie Clerc at the University of Edinburgh and the staff at Fera for assistance in collecting the wood mouse samples.

S.J., W.G.W., and M.A.C. contributed to conception, design, data acquisition, and analysis and interpretation and drafted and critically revised the manuscript. J.A.-O. contributed to data acquisition, analysis, and interpretation and drafted and critically revised the manuscript. A.H., E.H., R.S., S.C.L.K., and A.B.P. contributed to data acquisition and critically reviewed the manuscript. All authors gave final approval and agree to be accountable for all aspects of the work.

We declare there are no competing interests.

REFERENCES

- Greer A, Irie K, Hashim A, Leroux BG, Chang AM, Curtis MA, Darveau RP. 2016. Site-specific neutrophil migration and CXCL2 expression in periodontal tissue. *J Dent Res* 95:946–952. <https://doi.org/10.1177/0022034516641036>.
- Payne MA, Hashim A, Alsam A, Joseph S, Aduse-Opoku J, Wade WG, Curtis MA. 2019. Horizontal and vertical transfer of oral microbial dysbiosis and periodontal disease. *J Dent Res* 98:1503–1510. <https://doi.org/10.1177/0022034519877150>.
- Marcotte H, Lavoie MC. 1997. Comparison of the indigenous oral microbiota and immunoglobulin responses of athymic (*nu/nu*) and euthymic (*nu/+*) mice. *Oral Microbiol Immunol* 12:141–147. <https://doi.org/10.1111/j.1399-302x.1997.tb00370.x>.
- Gadbois T, Marcotte H, Rodrigue L, Coulombe C, Goyette N, Lavoie MC. 1993. Distribution of the resident oral bacterial populations in different strains of mice. *Microb Ecol Health Dis* 6:245–251. <https://doi.org/10.3109/08910609309141333>.
- Wolff LF, Krupp MJ, Liljemark WF. 1985. Microbial changes associated with advancing periodontitis in STR/N mice. *J Periodontol Res* 20:378–385. <https://doi.org/10.1111/j.1600-0765.1985.tb00449.x>.
- Trudel L, St-Amand L, Bareil M, Cardinal P, Lavoie MC. 1986. Bacteriology of the oral cavity of BALB/c mice. *Can J Microbiol* 32:673–678. <https://doi.org/10.1139/m86-124>.
- Hajishengallis G, Liang S, Payne MA, Hashim A, Jotwani R, Eskan MA, McIntosh ML, Alsam A, Kirkwood KL, Lambris JD, Darveau RP, Curtis MA. 2011. Low-abundance biofilm species orchestrates inflammatory periodontal disease through the commensal microbiota and complement. *Cell Host Microbe* 10:497–506. <https://doi.org/10.1016/j.chom.2011.10.006>.
- Abusleme L, O’Gorman H, Dutzan N, Greenwell-Wild T, Moutsopoulos NM. 2020. Establishment and stability of the murine oral microbiome. *J Dent Res* 99:721–729. <https://doi.org/10.1177/0022034520915485>.
- Curtis MA, Zenobia C, Darveau RP. 2011. The relationship of the oral microbiota to periodontal health and disease. *Cell Host Microbe* 10:302–306. <https://doi.org/10.1016/j.chom.2011.09.008>.
- Dutzan N, Kajikawa T, Abusleme L, Greenwell-Wild T, Zuazo CE, Ikeuchi T, Brechley L, Abe T, Hurabielle C, Martin D, Morell RJ, Freeman AF, Lazarevic V, Trinchieri G, Diaz PI, Holland SM, Belkaid Y, Hajishengallis G, Moutsopoulos NM. 2018. A dysbiotic microbiome triggers T_H17 cells to mediate oral mucosal immunopathology in mice and humans. *Sci Transl Med* 10:eaat0797. <https://doi.org/10.1126/scitranslmed.aat0797>.
- Polak D, Wilensky A, Shapira L, Halabi A, Goldstein D, Weiss EI, Hourihaddad Y. 2009. Mouse model of experimental periodontitis induced by *Porphyromonas gingivalis*/*Fusobacterium nucleatum* infection: bone loss and host response. *J Clin Periodontol* 36:406–410. <https://doi.org/10.1111/j.1600-051X.2009.01393.x>.
- Graves DT, Fine D, Teng Y-TA, Van Dyke TE, Hajishengallis G. 2008. The use of rodent models to investigate host-bacterium interactions related to periodontal diseases: rodent models for periodontal disease. *J Clin Periodontol* 35:89–105. <https://doi.org/10.1111/j.1600-051X.2007.01172.x>.
- Kirst ME, Li EC, Alfant B, Chi Y-Y, Walker C, Magnusson I, Wang GP. 2015. Dysbiosis and alterations in predicted functions of the subgingival microbiome in chronic periodontitis. *Appl Environ Microbiol* 81:783–793. <https://doi.org/10.1128/AEM.02712-14>.

14. Van Dyke TE, Bartold PM, Reynolds EC. 2020. The nexus between periodontal inflammation and dysbiosis. *Front Immunol* 11:511. <https://doi.org/10.3389/fimmu.2020.00511>.
15. Dewhirst FE, Chen T, Izard J, Paster BJ, Tanner ACR, Yu W-H, Lakshmanan A, Wade WG. 2010. The human oral microbiome. *J Bacteriol* 192:5002–5017. <https://doi.org/10.1128/JB.00542-10>.
16. Chen T, Yu W-H, Izard J, Baranova OV, Lakshmanan A, Dewhirst FE. 2010. The Human Oral Microbiome Database: a web accessible resource for investigating oral microbe taxonomic and genomic information. *Database (Oxford)* 2010:baq013. <https://doi.org/10.1093/database/baq013>.
17. Dewhirst FE, Klein EA, Bennett M-L, Croft JM, Harris SJ, Marshall-Jones ZV. 2015. The feline oral microbiome: a provisional 16S rRNA gene based taxonomy with full-length reference sequences. *Vet Microbiol* 175:294–303. <https://doi.org/10.1016/j.vetmic.2014.11.019>.
18. Dewhirst FE, Klein EA, Thompson EC, Blanton JM, Chen T, Milella L, Buckley CMF, Davis IJ, Bennett M-L, Marshall-Jones ZV. 2012. The canine oral microbiome. *PLoS One* 7:e36067. <https://doi.org/10.1371/journal.pone.0036067>.
19. Lagkouvardos I, Pukall R, Abt B, Foessel BU, Meier-Kolthoff JP, Kumar N, Bresciani A, Martínez I, Just S, Ziegler C, Brugiroux S, Garzetti D, Wenning M, Bui TPN, Wang J, Hugenholz F, Plugge CM, Peterson DA, Hornef MW, Baines JF, Smidt H, Walter J, Kristiansen K, Nielsen HB, Haller D, Overmann J, Stecher B, Clavel T. 2016. The Mouse Intestinal Bacterial Collection (miBC) provides host-specific insight into cultured diversity and functional potential of the gut microbiota. *Nat Microbiol* 1:16131. <https://doi.org/10.1038/nmicrobiol.2016.219>.
20. Liu C, Zhou N, Du M-X, Sun Y-T, Wang K, Wang Y-J, Li D-H, Yu H-Y, Song Y, Bai B-B, Xin Y, Wu L, Jiang C-Y, Feng J, Xiang H, Zhou Y, Ma J, Wang J, Liu H-W, Liu S-J. 2020. The Mouse Gut Microbial Biobank expands the coverage of cultured bacteria. *Nat Commun* 11:79. <https://doi.org/10.1038/s41467-019-13836-5>.
21. Xiao L, Feng Q, Liang S, Sonne SB, Xia Z, Qiu X, Li X, Long H, Zhang J, Zhang D, Liu C, Fang Z, Chou J, Glanville J, Hao Q, Kotowska D, Colding C, Licht TR, Wu D, Yu J, Sung JY, Liang Q, Li J, Jia H, Lan Z, Tremaroli V, Dworkynski P, Nielsen HB, Bäckhed F, Doré J, Le Chatelier E, Ehrlich SD, Lin JC, Arumugam M, Wang J, Madsen L, Kristiansen K. 2015. A catalog of the mouse gut metagenome. *Nat Biotechnol* 33:1103–1108. <https://doi.org/10.1038/nbt.3353>.
22. Reese AT, Dunn RR. 2018. Drivers of microbiome biodiversity: a review of general rules, feces, and ignorance. *mBio* 9:e01294-18. <https://doi.org/10.1128/mBio.01294-18>.
23. Sanders JG, Lukasiak P, Frederickson ME, Russell JA, Koga R, Knight R, Pierce NE. 2017. Dramatic differences in gut bacterial densities correlate with diet and habitat in rainforest ants. *Integr Comp Biol* 57:705–722. <https://doi.org/10.1093/icb/ixc088>.
24. Rodrigue L, Lavoie MC. 1996. Comparison of the proportions of oral bacterial species in BALB/c mice from different suppliers. *Lab Anim* 30:108–113. <https://doi.org/10.1258/002367796780865853>.
25. Clavel T, Charrier C, Haller D. 2013. *Streptococcus danieliae* sp. nov., a novel bacterium isolated from the caecum of a mouse. *Arch Microbiol* 195:43–49. <https://doi.org/10.1007/s00203-012-0846-6>.
26. Benga L, Bente WPM, Engelhardt E, Köhrer K, Gougoula C, Sager M. 2014. 16S ribosomal DNA sequence-based identification of bacteria in laboratory rodents: a practical approach in laboratory animal bacteriology diagnostics. *Lab Anim* 48. <https://doi.org/10.1177/0023677214538240>.
27. Hernández-Arriaga A, Baumann A, Witte OW, Frahm C, Bergheim I, Camarinha-Silva A. 2019. Changes in oral microbial ecology of C57BL/6 mice at different ages associated with sampling methodology. *Microorganisms* 7:283. <https://doi.org/10.3390/microorganisms7090283>.
28. Chun J, Kim KY, Lee J-H, Choi Y. 2010. The analysis of oral microbial communities of wild-type and Toll-like receptor 2-deficient mice using a 454 GS FLX Titanium pyrosequencer. *BMC Microbiol* 10:101. <https://doi.org/10.1186/1471-2180-10-101>.
29. Wymore Brand M, Wannemuehler MJ, Phillips GJ, Proctor A, Overstreet A-M, Jergens AE, Orcutt RP, Fox JG. 2015. The altered schaedler flora: continued applications of a defined murine microbial community. *ILAR J* 56:169–178. <https://doi.org/10.1093/ilar/ilv012>.
30. Schaedler RW, Dubs R, Costello R. 1965. Association of germfree mice with bacteria isolated from normal mice. *J Exp Med* 122:77–82. <https://doi.org/10.1084/jem.122.1.77>.
31. Tannock GW, Miller JR, Savage DC. 1984. Host specificity of filamentous, segmented microorganisms adherent to the small bowel epithelium in mice and rats. *Appl Environ Microbiol* 47:441–442. <https://doi.org/10.1128/AEM.47.2.441-442.1984>.
32. Dethlefsen L, McFall-Ngai M, Relman DA. 2007. An ecological and evolutionary perspective on human-microbe mutualism and disease. *Nature* 449:811–818. <https://doi.org/10.1038/nature06245>.
33. Maurice CF, Knowles SCL, Ladau J, Pollard KS, Fenton A, Pedersen AB, Turnbaugh PJ. 2015. Marked seasonal variation in the wild mouse gut microbiota. *ISME J* 9:2423–2434. <https://doi.org/10.1038/ismej.2015.53>.
34. Weldon L, Abolins S, Lenzi L, Bourne C, Riley EM, Viney M. 2015. The gut microbiota of wild mice. *PLoS One* 10:e0134643. <https://doi.org/10.1371/journal.pone.0134643>.
35. Rosshart SP, Vassallo BG, Angeletti D, Hutchinson DS, Morgan AP, Takeda K, Hickman HD, McCulloch JA, Badger JH, Ajami NJ, Trinchieri G, Pardo-Manuel de Villena F, Yewdell JW, Rehermann B. 2017. Wild mouse gut microbiota promotes host fitness and improves disease resistance. *Cell* 171:1015–1028.e13. <https://doi.org/10.1016/j.cell.2017.09.016>.
36. Rosshart SP, Herz J, Vassallo BG, Hunter A, Wall MK, Badger JH, McCulloch JA, Anastasakis DG, Sarshad AA, Leonardi I, Collins N, Blatter JA, Han S-J, Tamoutounour S, Potapova S, Claire MBFS, Yuan W, Sen SK, Dreier MS, Hild B, Hafner M, Wang D, Iliev ID, Belkaid Y, Trinchieri G, Rehermann B. 2019. Laboratory mice born to wild mice have natural microbiota and model human immune responses. *Science* 365:eaaw4361. <https://doi.org/10.1126/science.aaw4361>.
37. Huang X, Madan A. 1999. CAP3: a DNA sequence assembly program. *Genome Res* 9:868–877. <https://doi.org/10.1101/gr.9.9.868>.
38. Kim M, Oh H-S, Park S-C, Chun J. 2014. Towards a taxonomic coherence between average nucleotide identity and 16S rRNA gene sequence similarity for species demarcation of prokaryotes. *Int J Syst Evol Microbiol* <https://doi.org/10.1099/ijs.0.059774-0>.
39. Hall TA. 1999. BioEdit: a user-friendly biological sequence alignment editor and analysis program for Windows 95/98/NT. *Nucleic Acid Symp Ser* 41:95–98. Information Retrieval, Ltd, London, United Kingdom.
40. Kumar S, Stecher G, Tamura K. 2016. MEGA7: molecular evolutionary genetics analysis version 7.0 for bigger datasets. *Mol Biol Evol* 33:1870–1874. <https://doi.org/10.1093/molbev/msw054>.
41. Letunic I, Bork P. 2019. Interactive Tree Of Life (iTOL) v4: recent updates and new developments. *Nucleic Acids Res* 47:W256–W259. <https://doi.org/10.1093/nar/gkz239>.
42. Callahan BJ, McMurdie PJ, Rosen MJ, Han AW, Johnson AJA, Holmes SP. 2016. DADA2: high-resolution sample inference from Illumina amplicon data. *Nat Methods* 13:581–583. <https://doi.org/10.1038/nmeth.3869>.
43. Love MI, Huber W, Anders S. 2014. Moderated estimation of fold change and dispersion for RNA-seq data with DESeq2. *Genome Biol* 15:550. <https://doi.org/10.1186/s13059-014-0550-8>.
44. McMurdie PJ, Holmes S. 2013. phyloseq: an R package for reproducible interactive analysis and graphics of microbiome census data. *PLoS One* 8: e61217. <https://doi.org/10.1371/journal.pone.0061217>.
45. Wickham H. 2016. ggplot2: elegant graphics for data analysis, 2nd ed. Springer, Cham, Switzerland.
46. Bolger AM, Lohse M, Usadel B. 2014. Trimmomatic: a flexible trimmer for Illumina sequence data. *Bioinformatics* 30:2114–2120. <https://doi.org/10.1093/bioinformatics/btu170>.
47. Bankevich A, Nurk S, Antipov D, Gurevich AA, Dvorkin M, Kulikov AS, Lesin VM, Nikolenko SI, Pham S, Prjibelski AD, Pyshkin AV, Sirotkin AV, Vyahhi N, Tesler G, Alekseyev MA, Pevzner PA. 2012. SPAdes: a new genome assembly algorithm and its applications to single-cell sequencing. *J Comput Biol* 19:455–477. <https://doi.org/10.1089/cmb.2012.0021>.
48. Seemann T. 2014. Prokka: rapid prokaryotic genome annotation. *Bioinformatics* 30:2068–2069. <https://doi.org/10.1093/bioinformatics/btu153>.
49. Overbeek R, Olson R, Pusch GD, Olsen GJ, Davis JJ, Disz T, Edwards RA, Gerdes S, Parrello B, Shukla M, Vonstein V, Wattam AR, Xia F, Stevens R. 2014. The SEED and the rapid annotation of microbial genomes using subsystems technology (RAST). *Nucleic Acids Res* 42:D206–D214. <https://doi.org/10.1093/nar/gkt1226>.
50. Meier-Kolthoff JP, Auch AF, Klenk H-P, Göker M. 2013. Genome sequence-based species delimitation with confidence intervals and improved distance functions. *BMC Bioinformatics* 14:60. <https://doi.org/10.1186/1471-2105-14-60>.