

# A recent bottleneck of Y chromosome diversity coincides with a global change in culture

Monika Karmin,<sup>1,2,67</sup> Lauri Saag,<sup>1,3,67</sup> Mário Vicente,<sup>4,67</sup> Melissa A. Wilson Sayres,<sup>5,6,67</sup> Mari Järve,<sup>1</sup> Ulvi Gerst Talas,<sup>7</sup> Siiri Roots,<sup>1</sup> Anne-Mai Ilumäe,<sup>1,2</sup> Reedik Mägi,<sup>8</sup> Mario Mitt,<sup>8,9</sup> Luca Pagani,<sup>4</sup> Tarmo Puurand,<sup>7</sup> Zuzana Faltyskova,<sup>4</sup> Florian Clemente,<sup>4</sup> Alexia Cardona,<sup>4</sup> Ene Metspalu,<sup>1,2</sup> Hovhannes Sahakyan,<sup>1,10</sup> Bayazit Yunusbayev,<sup>1,11</sup> Georgi Hudjashov,<sup>1,12</sup> Michael DeGiorgio,<sup>13</sup> Eva-Liis Loogväli,<sup>1</sup> Christina Eichstaedt,<sup>4</sup> Mikk Eelmets,<sup>1,7</sup> Gyaneshwer Chaubey,<sup>1</sup> Kristiina Tambets,<sup>1</sup> Sergei Litvinov,<sup>1,11</sup> Maru Mormina,<sup>14</sup> Yali Xue,<sup>15</sup> Qasim Ayub,<sup>15</sup> Grigor Zoraqi,<sup>16</sup> Thorfinn Sand Korneliussen,<sup>5,17</sup> Farida Akhatova,<sup>18,19</sup> Joseph Lachance,<sup>20,21</sup> Sarah Tishkoff,<sup>20,22</sup> Kuvat Momynaliev,<sup>23</sup> François-Xavier Ricaut,<sup>24</sup> Pradiptajati Kusuma,<sup>24,25</sup> Harilanto Razafindrazaka,<sup>24</sup> Denis Pierron,<sup>24</sup> Murray P. Cox,<sup>26</sup> Gazi Nurun Nahar Sultana,<sup>27</sup> Rane Willerslev,<sup>28</sup> Craig Muller,<sup>17</sup> Michael Westaway,<sup>29</sup> David Lambert,<sup>29</sup> Vedrana Skaro,<sup>30,31</sup> Lejla Kovačević,<sup>32</sup> Shahlo Turdikulova,<sup>33</sup> Dilbar Dalimova,<sup>33</sup> Rita Khusainova,<sup>11,18</sup> Natalya Trofimova,<sup>1,11</sup> Vita Akhmetova,<sup>11</sup> Irina Khidiyatova,<sup>11,18</sup> Daria V. Lichman,<sup>34</sup> Jainagul Isakova,<sup>35</sup> Elvira Pocheshkhova,<sup>36</sup> Zhaxylyk Sabitov,<sup>37,38</sup> Nikolay A. Barashkov,<sup>39,40</sup> Pagbajabyn Nymadawa,<sup>41</sup> Evelin Mihailov,<sup>8</sup> Joseph Wee Tien Seng,<sup>42</sup> Irina Evseeva,<sup>43,44</sup> Andrea Bamberg Migliano,<sup>45</sup> Syafiq Abdullah,<sup>46</sup> George Andriadze,<sup>47</sup> Dragan Primorac,<sup>31,48,49,50</sup> Lubov Atramentova,<sup>51</sup> Olga Utevska,<sup>51</sup> Levon Yepiskoposyan,<sup>10</sup> Damir Marjanović,<sup>30,52</sup> Alena Kushniarevich,<sup>1,53</sup> Doron M. Behar,<sup>1</sup> Christian Gilissen,<sup>54</sup> Lisenka Vissers,<sup>54</sup> Joris A. Veltman,<sup>54</sup> Elena Balanovska,<sup>55</sup> Miroslava Derenko,<sup>56</sup> Boris Malyarchuk,<sup>56</sup> Andres Metspalu,<sup>8</sup> Sardana Fedorova,<sup>39,40</sup> Anders Eriksson,<sup>57,58</sup> Andrea Manica,<sup>57</sup> Fernando L. Mendez,<sup>59</sup> Tatiana M. Karafet,<sup>60</sup> Krishna R. Veeramah,<sup>61</sup> Neil Bradman,<sup>62</sup> Michael F. Hammer,<sup>60</sup> Ludmila P. Osipova,<sup>34</sup> Oleg Balanovsky,<sup>55,63</sup> Elza K. Khusnutdinova,<sup>11,18</sup> Knut Johnsen,<sup>64</sup> Mait Metspalu,<sup>7</sup> Mark G. Thomas,<sup>65</sup> Chris Tyler-Smith,<sup>15</sup> Peter A. Underhill,<sup>59</sup> Eske Willerslev,<sup>17</sup> Rasmus Nielsen,<sup>5</sup> Mait Metspalu,<sup>1,2,67</sup> Richard Villems,<sup>1,2,66,67</sup> and Toomas Kivisild<sup>1,4,67</sup>

<sup>1–66</sup>[Author affiliations appear at end of paper.]

It is commonly thought that human genetic diversity in non-African populations was shaped primarily by an out-of-Africa dispersal 50–100 thousand yr ago (kya). Here, we present a study of 456 geographically diverse high-coverage Y chromosome sequences, including 299 newly reported samples. Applying ancient DNA calibration, we date the Y-chromosomal

<sup>67</sup>These authors contributed equally to this work.

Corresponding authors: [tk331@cam.ac.uk](mailto:tk331@cam.ac.uk), [monika.karmin@gmail.com](mailto:monika.karmin@gmail.com)

Article published online before print. Article, supplemental material, and publication date are at <http://www.genome.org/cgi/doi/10.1101/gr.186684.114>.

© 2015 Karmin et al. This article is distributed exclusively by Cold Spring Harbor Laboratory Press for the first six months after the full-issue publication date (see <http://genome.cshlp.org/site/misc/terms.xhtml>). After six months, it is available under a Creative Commons License (Attribution-NonCommercial 4.0 International), as described at <http://creativecommons.org/licenses/by-nc/4.0/>.

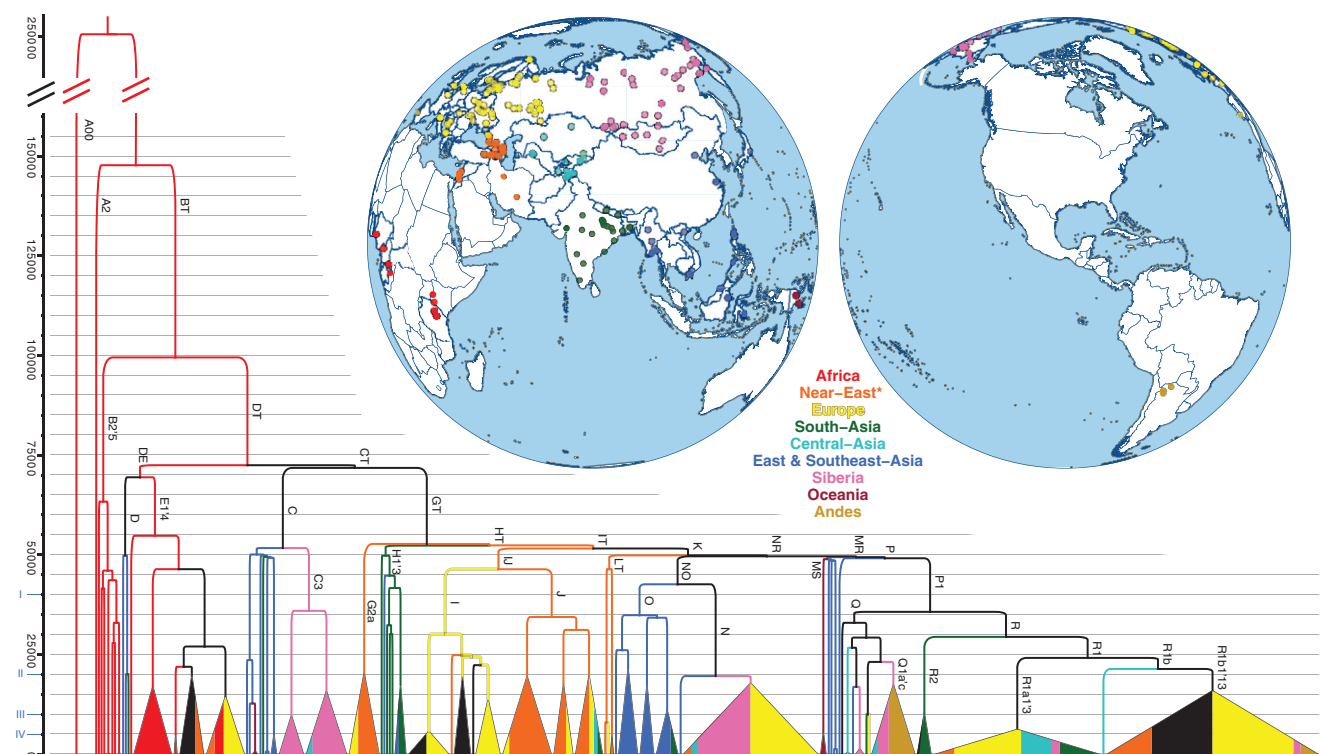
most recent common ancestor (MRCA) in Africa at 254 (95% CI 192–307) kya and detect a cluster of major non-African founder haplogroups in a narrow time interval at 47–52 kya, consistent with a rapid initial colonization model of Eurasia and Oceania after the out-of-Africa bottleneck. In contrast to demographic reconstructions based on mtDNA, we infer a second strong bottleneck in Y-chromosome lineages dating to the last 10 ky. We hypothesize that this bottleneck is caused by cultural changes affecting variance of reproductive success among males.

[Supplemental material is available for this article.]

Despite the higher per-base-mutation rate of mtDNA, the much greater length of the Y chromosome (Chr Y) offers the highest genealogical resolution of all non-recombining loci in the human genome. Previous studies have established a standard Y chromosome haplogroup nomenclature based on resequencing of limited tracts of the locus in small numbers of geographically diverse samples (The Y Chromosome Consortium 2002; Karafet et al. 2008; van Oven et al. 2013). As a result, the precise order and timing of the phylogenetic splits has only recently started to emerge from whole Y chromosome sequences (Francalacci et al. 2013; Mendez et al. 2013; Poznik et al. 2013; Wei et al. 2013; Lippold et al. 2014; Scozzari et al. 2014; Yan et al. 2014; Hallast et al. 2015). While the male to female effective population size ratio has been estimated as being below one throughout much of human evolutionary history (Lippold et al. 2014), the factors affecting its dynamics are still poorly understood. Here, we combine 299 new whole Y chromosome high-coverage sequences from 110 populations with similar publicly available data (Fig. 1; Supplemental Table S1; Methods). We use these 456 sequences to estimate the coales-

cent times and order of haplogroup splits (Supplemental Information 3,4), and we use simulations (Supplemental Information 5) to test the scenarios that can explain the observed patterns in the mtDNA and Y chromosome data for a subset of 320 individuals.

In labeling Y chromosome haplogroups, we follow the principles and rules set out by the Y Chromosome Consortium (YCC) (The Y Chromosome Consortium 2002). As we introduce a large number of new whole Chr Y sequences that substantially increase the resolution of the internal branches of the Chr Y tree, we try to both incorporate the new information and to maintain the integrity and historical coherence of the initial YCC haplogroup nomenclature as introduced in 2002 and its updates (Jobling and Tyler-Smith 2003; Karafet et al. 2008). We use an approach similar to the concise reference phylogeny proposed by van Oven et al. (2014) with minor modifications that are aimed to make the haplogroup nomenclature more amenable to the incorporation of novel haplotypes than it is now (Supplemental Information 6).



**Figure 1.** The phylogenetic tree of 456 whole Y chromosome sequences and a map of sampling locations. The phylogenetic tree is reconstructed using BEAST. Clades coalescing within 10% of the overall depth of the tree have been collapsed. Only main haplogroup labels are shown (details are provided in Supplemental Information 6). Colors indicate geographic origin of samples (Supplemental Table S1), and fill proportions of the collapsed clades represent the proportion of samples from a given region. Asterisk (\*) marks the inclusion of samples from Caucasus area. Personal Genomes Project (<http://www.personalgenomes.org>) samples of unknown and mixed geographic/ethnic origin are shown in black. The proposed structure of Y chromosome haplogroup naming (Supplemental Table S5) is given in Roman numerals on the y-axis.

## Results

Using standard and custom filters (Supplemental Information 2; Supplemental Table S2), we first identified reliable regions on the Chr Y and retained 8.8 Mb of sequence per individual. A total of 35,700 SNPs had a call rate higher than 95% and were subsequently used in phylogenetic analyses and for estimation of coalescence times. Data quality assessment by evaluating SNP differences between father-son pairs resulted in an average of approximately one mutation per pair, indicating a low false-positive rate, and only 588 recurrent sites (1.6%) observed in the filtered data. Combining independent evidence from two ancient DNA sequences, we estimated the mutation rate of Y chromosome binary SNPs in the filtered regions at  $0.74 \times 10^{-9}$  (95% CI  $0.63\text{--}0.95 \times 10^{-9}$ ) per base pair (bp) per yr (Supplemental Information 3). It should be noted that this estimate is based on only two ancient DNA samples from a relatively recent time horizon and the same Y chromosome haplogroup. However, a very similar mutation rate estimate of  $0.76 \times 10^{-9}$  per bp per yr was determined independently from a different ancient DNA specimen of much older age by a recent study (Fu et al. 2014).

We uncovered new phylogenetic structure and reappraised haplogroup definitions and their branch lengths in the global phylogeny (Fig. 1; Supplemental Fig. S3). We also generated two Illumina high-coverage sequences of African haplogroup A00 (Mendez et al. 2013) to root the phylogeny and to determine the ancestral versus derived states of the variable sites (Supplemental Table S8). We estimated the age of the split between A00 and the rest at 254 thousand yr ago (kya) (95% CI 192–307 kya; Supplemental Table S7). Comparing chimpanzee and A00 outgroup information across the 652 positions separating haplogroups A2/5 and BT (Supplemental Fig. S13) revealed inconsistency at 4.6% sites. The observed number of discordant calls was significantly higher than the 1%–2% discordance rate predicted from phylogenetic divergence between human and chimpanzee genomes (The Chimpanzee Sequencing and Analysis Consortium 2005) and likely reflects the uncertainties in mapping cross-species reads to the same reference sequence.

In anticipation of ever larger numbers of whole sequences, we simplified the Y chromosome haplogroup nomenclature (Supplemental Information 6) for all clades by using the “join” rule (The Y Chromosome Consortium 2002) and classified them relative to four coalescent horizons (Fig. 1; Supplemental Table S5). We used high-coverage whole-genome sequence data from this and previous studies to define the layout of the basic A and B subclades (Supplemental Figs. S14, S15). We found 236 markers that separate haplogroups restricted to African populations (A and B) from the rest of the phylogeny (Supplemental Fig. S13). Notably, we detected a >15-ky gap between the separation of African and non-African lineages at 68–72 (95% CI 52–87) kya and the short interval at 47–52 (95% CI 36–62) kya when non-African lineages differentiate into higher level haplogroups common in Eurasian, American, and Oceanian populations (Supplemental Table S7; Supplemental Fig. S9). This gap would be even more pronounced (52–121 kya) if extant Asian D and African E distributions could be explained by an early back-migration of ancestral DE lineages to Africa (Hammer et al. 1998).

In the non-African haplogroups C and F, we identified a number of novel features. We report that C now bifurcates into C3 (Supplemental Fig. S20) and another clade containing all the other C lineages including two new highly divergent subclades detected in our Island Southeast Asian samples that we call C7 and C9

(Supplemental Fig. S21). We show that only the F1329 SNP (Supplemental Fig. S13) first separates the deep F and GT branches and corroborate the succeeding swift split of G from HT by the single M578 SNP (Poznik et al. 2013). Similarly, all other subsequent inner branches (IT, K, NR, MR, P), common throughout non-African populations, are short and consistent with a rapid diversification of the basic Eurasian and Oceanian founder lineages at around 50 kya (Supplemental Fig. S9; Bowler et al. 2003; Higham et al. 2014). Within the Y chromosome haplogroups common in Eurasian populations, we noticed that many coalesce within the last 15 ky (Fig. 1), i.e., corresponding to climate improvement after the Last Glacial Maximum, and a cluster (Supplemental Table S7; Supplemental Fig. S11) of novel region-specific clades (Supplemental Information 6) with coalescence times within the last 4–8 ky. Regional representations of pairwise divergence times of Y chromosomes also revealed clustering of coalescence events consistent with the peopling of the Americas at around 15 kya (Supplemental Fig. S12).

We used Bayesian skyline plots (BSP) to infer temporal changes of regional male and female effective population sizes ( $N_e$ ) (Supplemental Fig. S4A). The cumulative global BSP of 320 Y chromosomes with known geographic affiliation and the plot inferred from mtDNA sequences from the same individuals both showed increases in the  $N_e$  at ~40–60 kya (Fig. 2). However, the two plots differed in a number of important features. Firstly, the  $N_e$  estimates based on mtDNA are consistently more than twice as high as those based on the Y chromosome (Supplemental Fig. S6). Secondly, both mtDNA and Y plots (Supplemental Fig. S4) showed an increase of  $N_e$  in the Holocene, which has been documented before for the female  $N_e$  (Gignoux et al. 2011). However, the Y chromosome plot suggested a reduction at around 8–4 kya (Supplemental Fig. S4B; Supplemental Table S4) when the female  $N_e$  is up to 17-fold higher than the male  $N_e$  (Supplemental Fig. S5).

## Discussion

The estimated time line of the Y chromosome coalescent events in non-African populations (Supplemental Fig. S9) fits well with archaeological evidence for the dates of colonization of Eurasia and Australia by anatomically modern humans as a single wave ~50 kya (Bowler et al. 2003; Mellars et al. 2013; Higham et al. 2014; Lippold et al. 2014). However, considering the fact that the Y chromosome is essentially a single genetic locus with an extremely low  $N_e$ , estimated <100 at the time of the out-of-Africa dispersal (Lippold et al. 2014), these results cannot refute the alternative models suggesting earlier Middle Pleistocene dispersals (100–130 kya) from Africa along the southern route (Armitage et al. 2011; Reyes-Centeno et al. 2014). The evidence for these early dispersals could potentially be embedded only in the autosomal genome.

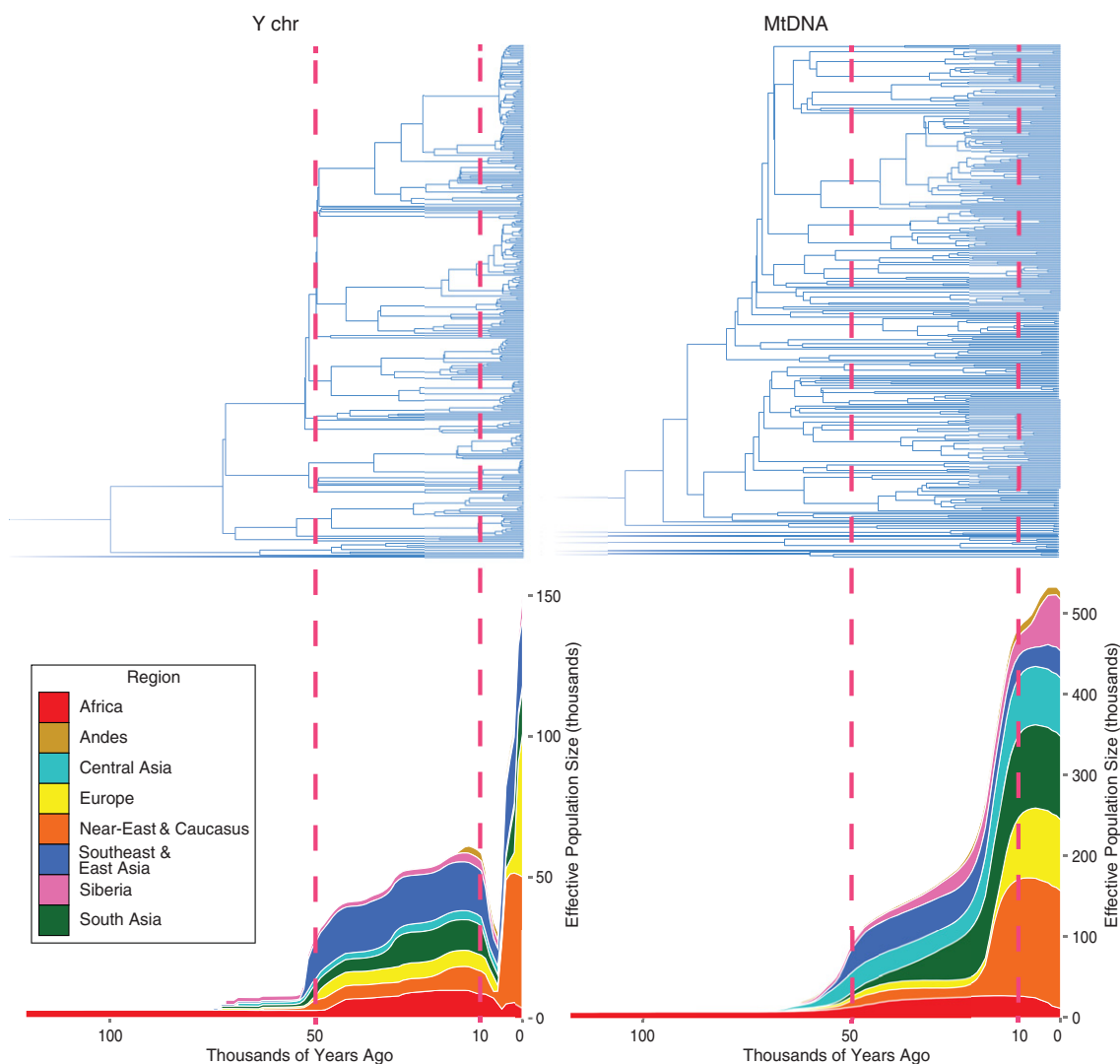
The surprisingly low estimates of the male  $N_e$  might be explained either by natural selection affecting the Y chromosome or by culturally driven sex-specific changes in variance in offspring number. As the drop of male to female  $N_e$  does not seem to be limited to a single or a few haplotypes (Supplemental Fig. S3), selection is not a likely explanation. However, the drop of the male  $N_e$  during the mid-Holocene corresponds to a change in the archaeological record characterized by the spread of Neolithic cultures, demographic changes, as well as shifts in social behavior (Barker 2006). The temporal sequence of the male  $N_e$  decline patterns among continental regions (Supplemental Fig. S4B) is consistent with the archaeological evidence for the earlier spread

of farming in the Near East, East Asia, and South Asia than in Europe (Fuller 2003; Bellwood 2005). A change in social structures that increased male variance in offspring number may explain the results, especially if male reproductive success was at least partially culturally inherited (Heyer et al. 2005).

Changes in population structure can also drastically affect the  $N_e$ . In simple models of population structure, with no competition among demes, structure will always increase the  $N_e$ . However, structure combined with an unbalanced sampling strategy can lead BSP to infer false signals of population decline under a constant population size model (Heller et al. 2013). An increase in male migration rate might reduce the male  $N_e$  but is unlikely to cause a brief drastic reduction in  $N_e$  as observed in our empirical data. Similarly, simple models of increased or decreased population structure are not sufficient to explain the observed patterns (Supplemental Information 5; Supplemental Fig. S7). However, in models with competition among demes, an increased level of variance in expected offspring number among demes can drastically decrease the  $N_e$  (Whitlock and Barton 1997). The effect may

be male-specific, for example, if competition is through a male-driven conquest. A historical example might be the Mongol expansions (Zerjal et al. 2003). Innovations in transportation technology (e.g., the invention of the wheel, horse and camel domestication, and open water sailing) might have contributed to this pattern. Likely, the effect we observe is due to a combination of culturally driven increased male variance in offspring number within demes and an increased male-specific variance among demes, perhaps enhanced by increased sex-biased migration patterns (Destro-Bisol et al. 2004; Skoglund et al. 2014) and male-specific cultural inheritance of fitness.

We note that any nonselective explanation for the reduction in  $N_e$  would also predict a reduction of the  $N_e$  at autosomal loci in this short time interval (Supplemental Fig. S6). In fact, when the sex difference in  $N_e$  is large, the autosomal effective population size should be dominated by the sex with the lowest effective population size. However, most existing methods are underpowered to detect  $N_e$  changes within the past few thousand years (i.e., relatively short-lived demographic events) from recombining genome-



**Figure 2.** Cumulative Bayesian skyline plots of Y chromosome and mtDNA diversity by world regions. The red dashed lines highlight the horizons of 10 kya and 50 kya. Individual plots for each region are presented in Supplemental Figure S4A.

wide sequence data, resulting in limited evidence either for or against such patterns in autosomal data. A recent study using a newly developed approach reported variable growth patterns in the window of 2–10 ky among global populations and some evidence of a reduction in the  $N_e$  in local populations (Schiffels and Durbin 2014). Finally, the inferred mid-Holocene  $N_e$  dips may represent a genuine population collapse following the introduction of farming, as has been recently shown for Western Europe using summed radiocarbon date density through time (Shennan et al. 2013).

The male-specific effective population size changes reported here highlight the potential of whole Y chromosome sequencing to improve our understanding of the demographic history of populations. Further insights into the causes of such sex-specific patterns will benefit from population-scale Y chromosome data from ancient DNA studies and their interpretation in an interdisciplinary framework including also archaeological and paleoclimatic evidence and integrative spatially explicit simulations.

## Methods

### Samples and sequencing

Following informed consent donor permission and authorization by local ethics committees, saliva or blood samples were collected from 299 unrelated male individuals from 110 populations, of which 16 are released under the accession number PRJEB7258 (Fig. 1; Supplemental Table S1; Clemente et al. 2014). For quality checks, we used additional data from 10 Estonian first-degree relatives, 24 Dutch father-son pairs, and four duplicate samples. Sequencing of the whole genome was performed at Complete Genomics (Mountain View, California) at standard (>40×) coverage for blood- and high coverage (>80×) for saliva-based DNA samples; the Dutch father-son pairs were blood samples sequenced at >80× coverage. Y chromosome (Chr Y) data from X-degenerate nonrecombining regions was extracted using cgatools and analyzed in combination with publicly available data (Drmanac et al. 2010; Lachance et al. 2012) and the Personal Genomes Project.

Independently, for the purpose of rooting the Chr Y tree with the oldest known clade, we sequenced the whole genomes from the buccal swabs of two individuals from the Mbo population, with the prior knowledge of their haplogroup being A00. This information was based on STR profiles and SNP genotyping (Mendez et al. 2013). Sequencing was performed on the Illumina HiSeq 2000 machines at the Genomic Research Center, Gene by Gene, Houston, Texas, at 30× aimed coverage. We used BWA 0.5.9 (Li and Durbin 2009) to map the paired-end reads to the GRCh37 human reference sequence, removing PCR duplicates with SAMtools 0.1.19 rmdup command (Li et al. 2009), and then calling Chr Y genotypes with SAMtools mpileup and BCFtools (Li et al. 2009), resulting in the average coverage for Chr Y of the two individuals 12.7× and 17.2×, respectively.

### Filtering the sequence data

We filtered the variant sites by the quality scores provided by Complete Genomics and kept only high-quality biallelic SNPs. We developed several additional filters to improve the quality of the resulting data set. Altogether, we tested four filters (Supplemental Table S2): (1) >5× unique sequence coverage filter, where regions with <5× unique coverage on Chr Y were removed; (2) X chromosome normalized coverage filter, where we tracked the fluctuations of relative unique coverage (UC) normalized to that

of the X chromosome (Chr X) to highlight the deviation of local sequence coverage from the expected mean; (3) regional exclusion mask, where we exclude all of Chr Y outside 10.8-Mb sequence mostly overlapping with X-degenerate regions shown to yield reliable next generation sequencing (NGS) data; and (4) re-mapping filter, where we modeled poorly mapping regions on Chr Y and identified those that also map to sequence data derived from female individuals (Supplemental Table S2; Supplemental Information 2).

### Y chromosome mutation rate and haplogroup age estimation

In order to minimize the effects of NGS differences and autosomal versus sex chromosome specifics on mutation rate calibration, and to avoid the need to make assumptions about the extent of genetic variation in relation to archaeological evidence, we calibrated the Chr Y mutation rate in our CG data by using inferences of the coalescent times of two Chr Y haplogroups, Q1 and Q2b, from ancient DNA data. We used Chr Y data of the 12.6-ky-old Anzick (Q1b) and 4-ky-old Saqqaq (Q2b) specimens (Rasmussen et al. 2010, 2014). In both cases, we used only transversion polymorphisms and the approach described in Rasmussen et al. (2014). For the calculations of Chr Y haplogroup coalescent times and BSP analyses, we combined the two ancient DNA-based mutation rate estimates using weights proportional to the product of age and coverage of both ancient DNA samples, yielding the final estimate of  $0.74 \times 10^{-9}$  (95% CI 0.63–0.95  $\times 10^{-9}$ ) per bp per yr (Supplemental Information 3). The coalescent ages of Chr Y haplogroups were estimated using two methodologies: Bayesian inference applied on sequence data (SI4) and using short tandem repeat (STR) data. The STR base age estimates were drawn using the method developed by Zhivotovskiy et al. (2004) and modified by Sengupta et al. (2006) (Supplemental Information 3).

### Phylogenetic analyses

Summary statistics, such as nucleotide diversity, mean pairwise differences, and AMOVA, were computed in Arlequin v3.5.1.3 (Excoffier and Lischer 2010). We used software package BEAST v1.8.0 (Drummond et al. 2012) to reconstruct phylogenetic trees, estimate coalescent ages of haplogroups, and sex-specific effective population sizes. The general time reversible (GTR) substitution model was selected by jModelTest (Darriba et al. 2012) as the best fit for the Chr Y data and the HKY + I + G for the mitochondrial genomes. In order to reduce the computational load, the Chr Y BEAST analysis only contained the variable positions. However, the BEAST input XML file was modified by adding a parameter under the “patterns” section that specifies the nucleotide composition at invariable sites. For the eight geographically explicit regions (Supplemental Table S1), we generated BSPs for both Chr Y and mtDNA data (Supplemental Fig. S4A). The BSPs for Chr Y and mtDNA were plotted together in R (R Core Team 2012) using the package ggplot2 (Wickham 2009). To test for significant deviations in diversification rates along the branches of the Y chromosome tree, we used SymmeTree 1.1 (Supplemental Information 4; Chan and Moore 2005).

### Simulations

FastSimCoal2 simulations of 500,000 sites of Chr Y and 16,569 sites of mtDNA were performed using mutation rates specified in SI3 and starting population size 10,000. Coalescent times of all nodes in the resulting trees were estimated under a constant size and exponential growth models. The growth model assumed constant size until 400 generations, followed by exponential growth

(Keinan and Clark 2012). For each model, we plotted the histogram of coalescent times of all the nodes of the simulated trees by six different deme formation scenarios: 1: no deme structure; 2: formation of 10 demes 400 generations ago; 3–6: formation of 25, 50, 75, and 100 demes 400 generations ago, respectively (Supplemental Information 5).

### Nomenclature

In labeling Chr Y haplogroups, we follow the principles and rules set out by The Y Chromosome Consortium (2002). We try to both incorporate our new information and to maintain the integrity and historical coherence of the initial YCC haplogroup nomenclature as introduced in 2002 and its updates (Jobling and Tyler-Smith 2003; Karafet et al. 2008). We use an approach similar to the concise reference phylogeny proposed by van Oven et al. (2014) with minor modifications that are aimed at making the Chr Y haplogroup nomenclature more amenable to the incorporation of novel haplotypes than it is now. We propose to simplify the Chr Y haplogroup nomenclature by defining a limited number of levels of alphanumeric depth to be used in the haplogroup names, using the apostrophe symbol (') to denote the "joined" names of related haplogroups at depths greater than Level I (Supplemental Table S5; Supplemental Information 6).

### Data access

The raw read data on the Y chromosomes extracted from the whole genome sequences from this study have been submitted to the European Nucleotide Archive (ENA; <http://www.ebi.ac.uk/ena/>) under accession number PRJEB8108. The data are also available at the data repository of the Estonian Biocentre ([http://www.ebc.ee/free\\_data/chrY](http://www.ebc.ee/free_data/chrY)).

### List of affiliations

<sup>1</sup>Estonian Biocentre, Tartu, 51010, Estonia; <sup>2</sup>Department of Evolutionary Biology, Institute of Molecular and Cell Biology, University of Tartu, Tartu, 51010, Estonia; <sup>3</sup>Department of Botany, Institute of Ecology and Earth Sciences, University of Tartu, Tartu, 51010, Estonia; <sup>4</sup>Division of Biological Anthropology, University of Cambridge, Cambridge, CB2 1QH, United Kingdom; <sup>5</sup>Department of Integrative Biology, University of California Berkeley, Berkeley, California 94720, USA; <sup>6</sup>School of Life Sciences and The Biodesign Institute, Tempe, Arizona 85287-5001, USA; <sup>7</sup>Department of Bioinformatics, Institute of Molecular and Cell Biology, University of Tartu, Tartu, 51010, Estonia; <sup>8</sup>Estonian Genome Center, University of Tartu, Tartu, 51010, Estonia; <sup>9</sup>Department of Biotechnology, Institute of Molecular and Cell Biology, University of Tartu, Tartu, 51010, Estonia; <sup>10</sup>Laboratory of Ethnogenomics, Institute of Molecular Biology, National Academy of Sciences, Yerevan, Armenia; <sup>11</sup>Institute of Biochemistry and Genetics, Ufa Scientific Center of the Russian Academy of Sciences, Ufa, 450054, Russia; <sup>12</sup>Department of Psychology, University of Auckland, Auckland, 1142, New Zealand; <sup>13</sup>Department of Biology, Pennsylvania State University, University Park, Pennsylvania 16802, USA; <sup>14</sup>Department of Applied Social Sciences, University of Winchester, Winchester, SO22 4NR, United Kingdom; <sup>15</sup>The Wellcome Trust Sanger Institute, Hinxton, CB10 1SA, United Kingdom; <sup>16</sup>Center of Molecular Diagnosis and Genetic Research, University Hospital of Obstetrics and Gynecology, Tirana, ALB1005, Albania; <sup>17</sup>Center for GeoGenetics, University of Copenhagen, Copenhagen, DK-1350, Denmark; <sup>18</sup>Department

of Genetics and Fundamental Medicine, Bashkir State University, Ufa, 450074, Russia; <sup>19</sup>Institute of Fundamental Medicine and Biology, Kazan Federal University, Kazan, 420008, Russia; <sup>20</sup>Department of Genetics, University of Pennsylvania, Philadelphia, Pennsylvania 19104-6145, USA; <sup>21</sup>School of Biology, Georgia Institute of Technology, Atlanta, 30332, Georgia, USA; <sup>22</sup>Department of Biology, University of Pennsylvania, Philadelphia, Pennsylvania 19104-6313, USA; <sup>23</sup>DNcode Laboratories, Moscow, 119992, Russia; <sup>24</sup>Evolutionary Medicine Group, Laboratoire d'Anthropologie Moléculaire et Imagerie de Synthèse, Centre National de la Recherche Scientifique, Université de Toulouse 3, Toulouse, 31073, France; <sup>25</sup>Eijkman Institute for Molecular Biology, Jakarta, 10430, Indonesia; <sup>26</sup>Statistics and Bioinformatics Group, Institute of Fundamental Sciences, Massey University, Palmerston North, 4442, New Zealand; <sup>27</sup>Centre for Advanced Research in Sciences (CARS), DNA Sequencing Research Laboratory, University of Dhaka, Dhaka, Dhaka-1000, Bangladesh; <sup>28</sup>Arctic Research Centre, Aarhus University, Aarhus, DK-8000, Denmark; <sup>29</sup>Environmental Futures Research Institute, Griffith University, Nathan, 4111, Australia; <sup>30</sup>Genos, DNA Laboratory, Zagreb, 10000, Croatia; <sup>31</sup>University of Osijek, Medical School, Osijek, 31000, Croatia; <sup>32</sup>Centogene AG, Rostock, 18057, Germany; <sup>33</sup>Institute of Bioorganic Chemistry, Academy of Science, Tashkent, 100143, Uzbekistan; <sup>34</sup>Institute of Cytology and Genetics, Novosibirsk, 630090, Russia; <sup>35</sup>Institute of Molecular Biology and Medicine, Bishkek, 720040, Kyrgyzstan; <sup>36</sup>Kuban State Medical University, Krasnodar, 350063, Russia; <sup>37</sup>L.N. Gumilyov Eurasian National University, Astana, 010008, Kazakhstan; <sup>38</sup>Center for Life Sciences, Nazarbayev University, Astana, 010000, Kazakhstan; <sup>39</sup>Department of Molecular Genetics, Yakut Scientific Centre of Complex Medical Problems, Yakutsk, 677010, Russia; <sup>40</sup>Laboratory of Molecular Biology, Institute of Natural Sciences, M.K. Ammosov North-Eastern Federal University, Yakutsk, 677000, Russia; <sup>41</sup>Mongolian Academy of Medical Sciences, Ulaanbaatar, 210620, Mongolia; <sup>42</sup>National Cancer Centre Singapore, 169610, Singapore; <sup>43</sup>Northern State Medical University, Arkhangelsk, 163000, Russia; <sup>44</sup>Anthony Nolan, London, NW3 2NU, United Kingdom; <sup>45</sup>Department of Anthropology, University College London, London, WC1E 6BT, United Kingdom; <sup>46</sup>RIPAS Hospital, Bandar Seri Begawan, BE1518, Brunei; <sup>47</sup>Scientific-Research Center of the Caucasian Ethnic Groups, St. Andrews Georgian University, Tbilisi, 0162, Georgia; <sup>48</sup>St. Catherine Specialty Hospital, Zabok, 49210, Croatia; <sup>49</sup>Eberly College of Science, Pennsylvania State University, University Park, Pennsylvania 16802, USA; <sup>50</sup>University of Split, Medical School, Split, 21000, Croatia; <sup>51</sup>V.N. Karazin Kharkiv National University, Kharkiv, 61022, Ukraine; <sup>52</sup>Department of Genetics and Bioengineering, Faculty of Engineering and Information Technologies, International Burch University, Sarajevo, 71000, Bosnia and Herzegovina; <sup>53</sup>Institute of Genetics and Cytology, National Academy of Sciences, Minsk, 220072, Belarus; <sup>54</sup>Department of Human Genetics, Radboud University Medical Center, Nijmegen, 106525 GA, The Netherlands; <sup>55</sup>Research Centre for Medical Genetics, Russian Academy of Sciences, Moscow, 115478, Russia; <sup>56</sup>Genetics Laboratory, Institute of Biological Problems of the North, Russian Academy of Sciences, Magadan, 685000, Russia; <sup>57</sup>Department of Zoology, University of Cambridge, Cambridge, CB2 3EJ, United Kingdom; <sup>58</sup>Integrative Systems Biology Lab, King Abdullah University of Science and Technology, Thuwal, 23955-6900, Saudi Arabia; <sup>59</sup>Department of Genetics, Stanford University School of Medicine, Stanford, California 94305-5120, USA; <sup>60</sup>ARL Division of Biotechnology, University of Arizona, Tucson, Arizona 85721, USA; <sup>61</sup>Department of Ecology and Evolution, Stony Brook University,

Stony Brook, New York 11794-5245, USA; <sup>62</sup>The Henry Stewart Group, London, WC1A 2HN, United Kingdom; <sup>63</sup>Vavilov Institute for General Genetics, Russian Academy of Sciences, Moscow, 119991, Russia; <sup>64</sup>University Hospital of North Norway, Tromsø, N-9038, Norway; <sup>65</sup>Research Department of Genetics, Evolution and Environment, University College London, London, WC1E 6BT, United Kingdom; <sup>66</sup>Estonian Academy of Sciences, Tallinn, 10130, Estonia

## Acknowledgments

We thank A. Raidvee for discussions on population size modeling, and T. Reisberg and J. Parik from the Core Facility of the EBC for technical assistance. The sequencing was supported by Estonian and European Research (infrastructure) Roadmap grant no. 3.2.0304.11-0312. M.K., L.S., M.J., S.R., A.-M.I., E.Me., H.S., B.Y., G.H., E.-L.L., G.C., K.T., S.L., A.K., D.M.B., M.Me., R.V., and T.K. were supported by the EU European Regional Development Fund through the Centre of Excellence in Genomics to the Estonian Biocentre and Estonian Institutional Research grant IUT24-1. M.Me. was additionally supported by Estonian Science Foundation grant 8973. M.K. and G.C. were additionally supported by Estonian Research Council grant PUT766. G.H. was supported by a NEFLEX grant funded by the European Union (People Marie Curie Actions, International Research Staff Exchange Scheme, call FP7-PEOPLE-2012-IRSES-number 318979). B.Y. was additionally supported by Russian Federation President Grant for young scientists MK-2845.2014.4. T.K. was supported by ERC Starting Investigator grant FP7-261213. M.R. was supported by the EU ERDF through Estonian Centre of Excellence in Genomics grant 3.2.0101.08-0011 and the Estonian Ministry of Education and Research through grant SF0180026s09. T.P. was supported by the Centre of Translational Genomics of the University of Tartu SP1GVARENG. U.G.T. was supported by the Estonian Ministry of Education and Research through grant SF0180026s09. E.K.K. was supported by The Russian Foundation for Basic Research 14-04-00725-a, The Russian Humanitarian Scientific Foundation 13-11-02014, and the Program of the Basic Research of the RAS Presidium "Biological diversity." B.M. was supported by Presidium of Russian Academy of Sciences grant number 12-I-P30-12. O.B. was supported by Russian Science Foundation grant 14-14-00827. Y.X., Q.A., and C.T.-S. were supported by Wellcome Trust grant 098051. A.B.M. was supported by a Leverhulme Program Grant (RP2011-R-045). The work of F.A. was performed according to the Russian Government Program of Competitive Growth of Kazan Federal University and funded by the subsidy allocated to Kazan Federal University for the state assignment in the sphere of scientific activities. Computational analyses were carried out at the High Performance Computing Center, University of Tartu and the Core Computing Unit of the Estonian Biocentre.

*Author contributions:* M.K., L.S., M.V., M.A.W.S., M.Me., R.V., and T.K. contributed equally to this work. For detailed information on author contributions, please see Supplemental Information 1.

## References

- Armitage SJ, Jasim SA, Marks AE, Parker AG, Usik VI, Uerpmann HP. 2011. The southern route "out of Africa": evidence for an early expansion of modern humans into Arabia. *Science* **331**: 453–456.
- Barker G. 2006. *The agricultural revolution in prehistory: why did foragers become farmers?* Oxford University Press, Oxford, UK.
- Bellwood PS. 2005. *First farmers: the origins of agricultural societies*. Blackwell Publishing, Malden, MA.
- Bowler J, Johnston H, Olley J, Prescott J, Roberts R, Shawcross W, Spooner N. 2003. New ages for human occupation and climatic change at Lake Mungo, Australia. *Nature* **421**: 837–840.
- Chan KM, Moore BR. 2005. SYMMETREE: whole-tree analysis of differential diversification rates. *Bioinformatics* **21**: 1709–1710.
- The Chimpanzee Sequencing and Analysis Consortium. 2005. Initial sequence of the chimpanzee genome and comparison with the human genome. *Nature* **437**: 69–87.
- Clemente FJ, Cardona A, Inchley CE, Peter BM, Jacobs G, Pagani L, Lawson DJ, Antão T, Vicente M, Mitt M, et al. 2014. A selective sweep on a deleterious mutation in CPT1A in Arctic populations. *Am J Hum Genet* **95**: 584–589.
- Darriba D, Taboada GL, Doallo R, Posada D. 2012. jModelTest 2: more models, new heuristics and parallel computing. *Nat Methods* **9**: 772.
- Destro-Bisol G, Donati F, Coia V, Boschi I, Verginelli F, Caglia A, Tofanelli S, Spedini G, Capelli C. 2004. Variation of female and male lineages in sub-Saharan populations: the importance of sociocultural factors. *Mol Biol Evol* **21**: 1673–1682.
- Drmanac R, Sparks AB, Callow MJ, Halpern AL, Burns NL, Kermani BG, Carnevali P, Nazarenko I, Nilsen GB, Yeung G, et al. 2010. Human genome sequencing using unchained base reads on self-assembling DNA nanoarrays. *Science* **327**: 78–81.
- Drummond AJ, Suchard MA, Xie D, Rambaut A. 2012. Bayesian phylogenetics with BEAUti and the BEAST 1.7. *Mol Biol Evol* **29**: 1969–1973.
- Excoffier L, Lischer HE. 2010. Arlequin suite ver 3.5: a new series of programs to perform population genetics analyses under Linux and Windows. *Mol Ecol Resour* **10**: 564–567.
- Francalacci P, Morelli L, Angius A, Berutti R, Reinier F, Atzeni R, Pilu R, Busonero F, Maschio A, Zara I, et al. 2013. Low-pass DNA sequencing of 1200 Sardinians reconstructs European Y-chromosome phylogeny. *Science* **341**: 565–569.
- Fu Q, Li H, Moorjani P, Jay F, Slepchenko SM, Bondarev AA, Johnson PLF, Aximu-Petri A, Prüfer K, de Filippo C, et al. 2014. Genome sequence of a 45,000-year-old modern human from western Siberia. *Nature* **514**: 445–449.
- Fuller D. 2003. An agricultural perspective on Dravidian historical linguistics: archaeological crop packages, livestock and Dravidian crop vocabulary. In *Examining the farming/language dispersal hypothesis* (ed. Bellwood P, Renfrew C), pp. 191–213. The McDonald Institute for Archaeological Research, Cambridge, UK.
- Gignoux CR, Henn BM, Mountain JL. 2011. Rapid, global demographic expansions after the origins of agriculture. *Proc Natl Acad Sci* **108**: 6044–6049.
- Hallast P, Batini C, Zadik D, Maisano Delser P, Wetton JH, Arroyo-Pardo E, Cavalleri GL, de Knijff P, Destro Bisol G, Dupuy BM, et al. 2015. The Y-chromosome tree bursts into leaf: 13,000 high-confidence SNPs covering the majority of known clades. *Mol Biol Evol* **32**: 661–673.
- Hammer MF, Karafet T, Rasanayagam A, Wood ET, Altheide TK, Jenkins T, Griffiths RC, Templeton AR, Zegura SL. 1998. Out of Africa and back again: nested cladistic analysis of human Y chromosome variation. *Mol Biol Evol* **15**: 427–441.
- Heller R, Chikhi L, Siegmund HR. 2013. The confounding effect of population structure on Bayesian skyline plot inferences of demographic history. *PLoS One* **8**: e62992.
- Heyer E, Sibert A, Austerlitz F. 2005. Cultural transmission of fitness: genes take the fast lane. *Trends Genet* **21**: 234–239.
- Higham T, Douka K, Wood R, Ramsey CB, Brock F, Basell L, Camps M, Arrizabalaga A, Baena J, Barroso-Ruiz C, et al. 2014. The timing and spatiotemporal patterning of Neanderthal disappearance. *Nature* **512**: 306–309.
- Jobling MA, Tyler-Smith C. 2003. The human Y chromosome: an evolutionary marker comes of age. *Nat Rev Genet* **4**: 598–612.
- Karafet TM, Mendez FL, Meilerman MB, Underhill PA, Zegura SL, Hammer MF. 2008. New binary polymorphisms reshape and increase resolution of the human Y chromosomal haplogroup tree. *Genome Res* **18**: 830–838.
- Keinan A, Clark AG. 2012. Recent explosive human population growth has resulted in an excess of rare genetic variants. *Science* **336**: 740–743.
- Lachance J, Vernot B, Elbers CC, Ferwerda B, Froment A, Bodo JM, Lema G, Fu W, Nyambo TB, Rebbeck TR, et al. 2012. Evolutionary history and adaptation from high-coverage whole-genome sequences of diverse African hunter-gatherers. *Cell* **150**: 457–469.
- Li H, Durbin R. 2009. Fast and accurate short read alignment with Burrows-Wheeler transform. *Bioinformatics* **25**: 1754–1760.
- Li H, Handsaker B, Wysoker A, Fennell T, Ruan J, Homer N, Marth G, Abecasis G, Durbin R. 2009. The Sequence Alignment/Map format and SAMtools. *Bioinformatics* **25**: 2078–2079.
- Lippold S, Xu H, Ko A, Li M, Renaud G, Butthof A, Schröder R, Stoneking M. 2014. Human paternal and maternal demographic histories: insights from high-resolution Y chromosome and mtDNA sequences. *Investig Genet* **5**: 17.

- Mellars P, Gori KC, Carr M, Soares PA, Richards MB. 2013. Genetic and archaeological perspectives on the initial modern human colonization of southern Asia. *Proc Natl Acad Sci* **110**: 10699–10704.
- Mendez FL, Krahn T, Schrack B, Krahn AM, Veeramah KR, Woerner AE, Fomine FL, Bradman N, Thomas MG, Karafet TM, et al. 2013. An African American paternal lineage adds an extremely ancient root to the human Y chromosome phylogenetic tree. *Am J Hum Genet* **92**: 454–459.
- Poznik GD, Henn BM, Yee MC, Sliwerska E, Euskirchen GM, Lin AA, Snyder M, Quintana-Murci L, Kidd JM, Underhill PA, et al. 2013. Sequencing Y chromosomes resolves discrepancy in time to common ancestor of males versus females. *Science* **341**: 562–565.
- R Core Team. 2012. *R: A language and environment for statistical computing*. R Foundation for Statistical Computing, Vienna, Austria. <http://www.R-project.org/>.
- Rasmussen M, Li Y, Lindgreen S, Pedersen JS, Albrechtsen A, Moltke I, Metspalu M, Metspalu E, Kivisild T, Gupta R, et al. 2010. Ancient human genome sequence of an extinct Palaeo-Eskimo. *Nature* **463**: 757–762.
- Rasmussen M, Anzick SL, Waters MR, Skoglund P, DeGiorgio M, Stafford TW Jr, Rasmussen S, Moltke I, Albrechtsen A, Doyle SM, et al. 2014. The genome of a Late Pleistocene human from a Clovis burial site in western Montana. *Nature* **506**: 225–229.
- Reyes-Centeno H, Ghirotto S, Detroit F, Grimaud-Herve D, Barbujani G, Harvati K. 2014. Genomic and cranial phenotype data support multiple modern human dispersals from Africa and a southern route into Asia. *Proc Natl Acad Sci* **111**: 7248–7253.
- Schiffels S, Durbin R. 2014. Inferring human population size and separation history from multiple genome sequences. *Nat Genet* **46**: 919–925.
- Scozzari R, Massaia A, Trombetta B, Bellusci G, Myres NM, Novelletto A, Cruciani F. 2014. An unbiased resource of novel SNP markers provides a new chronology for the human Y chromosome and reveals a deep phylogenetic structure in Africa. *Genome Res* **24**: 535–544.
- Sengupta S, Zhivotovsky LA, King R, Mehdi SQ, Edmonds CA, Chow CE, Lin AA, Mitra M, Sil SK, Ramesh A, et al. 2006. Polarity and temporality of high-resolution Y-chromosome distributions in India identify both indigenous and exogenous expansions and reveal minor genetic influence of Central Asian pastoralists. *Am J Hum Genet* **78**: 202–221.
- Shennan S, Downey SS, Timpson A, Edinborough K, Colledge S, Kerig T, Manning K, Thomas MG. 2013. Regional population collapse followed initial agriculture booms in mid-Holocene Europe. *Nat Commun* **4**: 2486.
- Skoglund P, Malmstrom H, Omrak A, Raghavan M, Valdiosera C, Gunther T, Hall P, Tambets K, Parik J, Sjogren KG, et al. 2014. Genomic diversity and admixture differs for Stone-Age Scandinavian foragers and farmers. *Science* **344**: 747–750.
- van Oven M, Toscani K, van den Tempel N, Ralf A, Kayser M. 2013. Multiplex genotyping assays for fine-resolution subtyping of the major human Y-chromosome haplogroups E, G, I, J, and R in anthropological, genealogical, and forensic investigations. *Electrophoresis* **34**: 3029–3038.
- van Oven M, Van Geystelen A, Kayser M, Decorte R, Larmuseau MH. 2014. Seeing the wood for the trees: a minimal reference phylogeny for the human Y chromosome. *Hum Mutat* **35**: 187–191.
- Wei W, Ayub Q, Chen Y, McCarthy S, Hou Y, Carbone I, Xue Y, Tyler-Smith C. 2013. A calibrated human Y-chromosomal phylogeny based on resequencing. *Genome Res* **23**: 388–395.
- Whitlock MC, Barton NH. 1997. The effective size of a subdivided population. *Genetics* **146**: 427–441.
- Wickham H. 2009. *ggplot2: elegant graphics for data analysis*. Springer, New York.
- The Y Chromosome Consortium. 2002. A nomenclature system for the tree of human Y-chromosomal binary haplogroups. *Genome Res* **12**: 339–348.
- Yan S, Wang CC, Zheng HX, Wang W, Qin ZD, Wei LH, Wang Y, Pan XD, Fu WQ, He YG, et al. 2014. Y chromosomes of 40% Chinese descend from three Neolithic super-grandfathers. *PLoS One* **9**: e105691.
- Zerjal T, Xue Y, Bertorelle G, Wells RS, Bao W, Zhu S, Qamar R, Ayub Q, Mohyuddin A, Fu S, et al. 2003. The genetic legacy of the Mongols. *Am J Hum Genet* **72**: 717–721.
- Zhivotovsky LA, Underhill PA, Cinnioglu C, Kayser M, Morar B, Kivisild T, Scozzari R, Cruciani F, Destro-Bisol G, Spedini G, et al. 2004. The effective mutation rate at Y chromosome short tandem repeats, with application to human population-divergence time. *Am J Hum Genet* **74**: 50–61.

Received November 6, 2014; accepted in revised form February 13, 2015.



## A recent bottleneck of Y chromosome diversity coincides with a global change in culture

Monika Karmin, Lauri Saag, Mário Vicente, et al.

*Genome Res.* 2015 25: 459-466 originally published online March 13, 2015

Access the most recent version at doi:[10.1101/gr.186684.114](https://doi.org/10.1101/gr.186684.114)

---

**Supplemental Material** <http://genome.cshlp.org/content/suppl/2015/02/18/gr.186684.114.DC1>

**References** This article cites 44 articles, 14 of which can be accessed free at:  
<http://genome.cshlp.org/content/25/4/459.full.html#ref-list-1>

**Creative Commons License** This article is distributed exclusively by Cold Spring Harbor Laboratory Press for the first six months after the full-issue publication date (see <http://genome.cshlp.org/site/misc/terms.xhtml>). After six months, it is available under a Creative Commons License (Attribution-NonCommercial 4.0 International), as described at <http://creativecommons.org/licenses/by-nc/4.0/>.

**Email Alerting Service** Receive free email alerts when new articles cite this article - sign up in the box at the top right corner of the article or [click here](#).

---



---

To subscribe to *Genome Research* go to:  
<http://genome.cshlp.org/subscriptions>

---