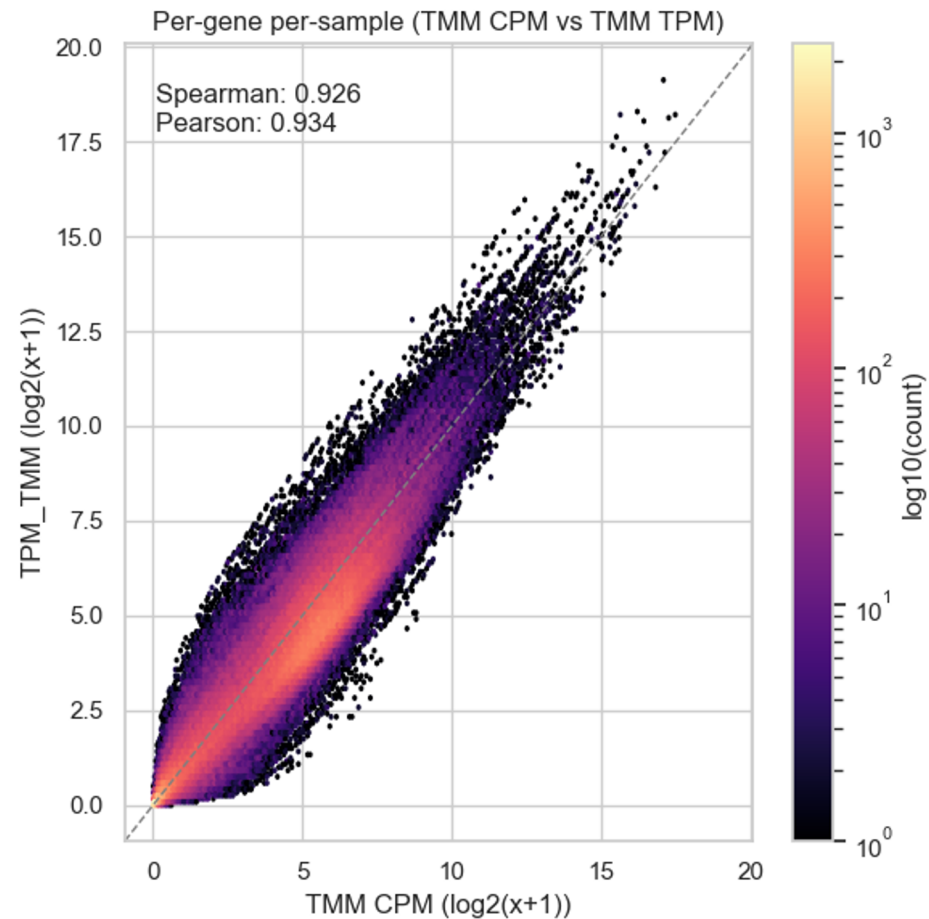


Effect of normalization change on expression values



Question: Does normalization criteria affect expression trends?

Estimated values in CPM and TPM are compared, with subsequent adjustment by trimmed mean values (TMM).

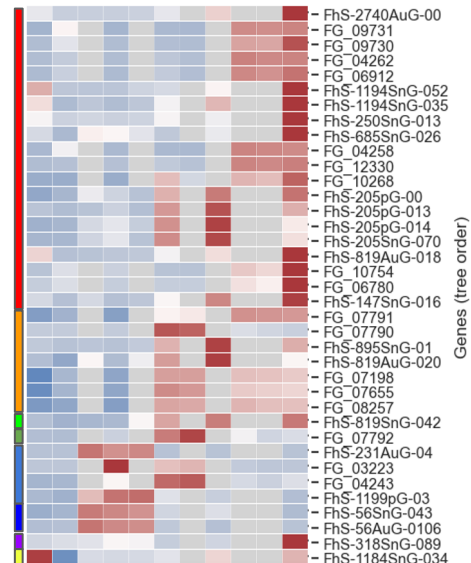
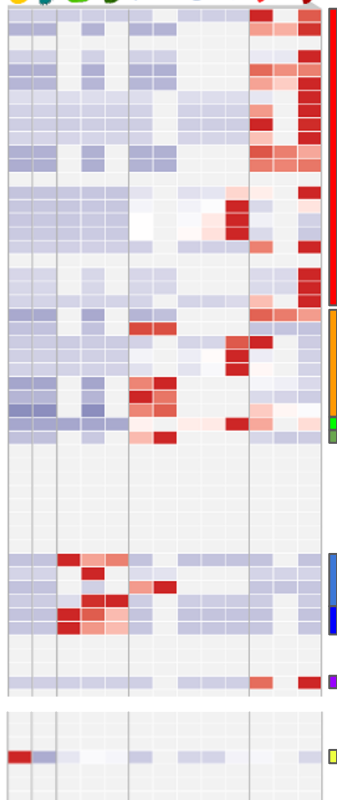
The correlation between expression values is very high.

Discrepancies occur mainly in genes with few counts.

Conclusion: Expression values do not change significantly with diverse normalization criteria.

Effect of normalization change in key multigenic families

CatL

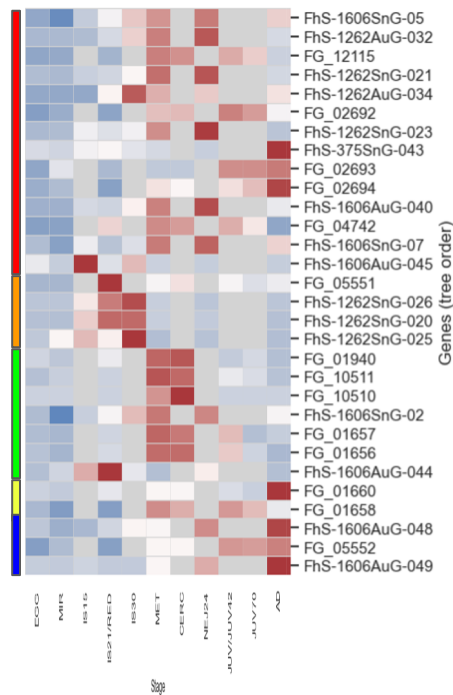
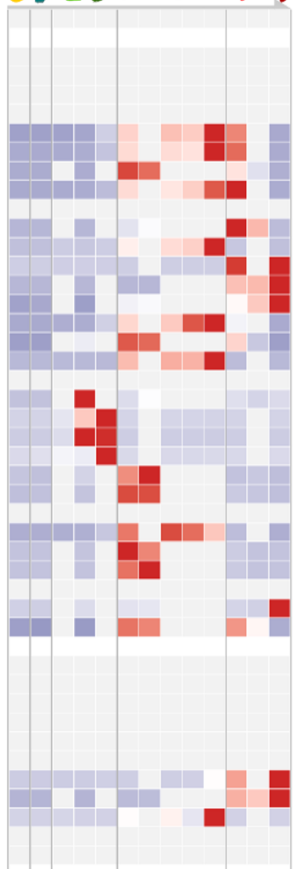
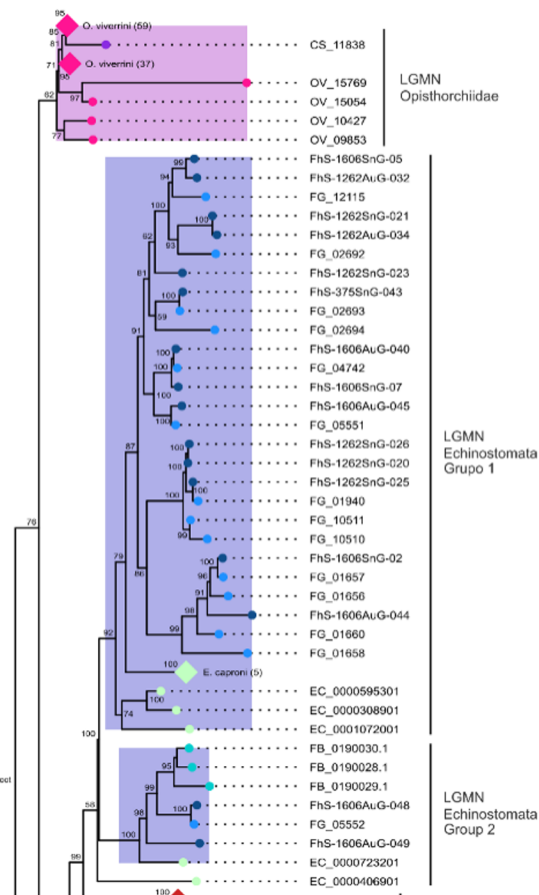


Question: If we normalize differently, do we see the same trends in multigenerational families?

Conclusion: The normalization criteria does not change the expression patterns significantly

Effect of normalization change in key multigenic families

LGMN

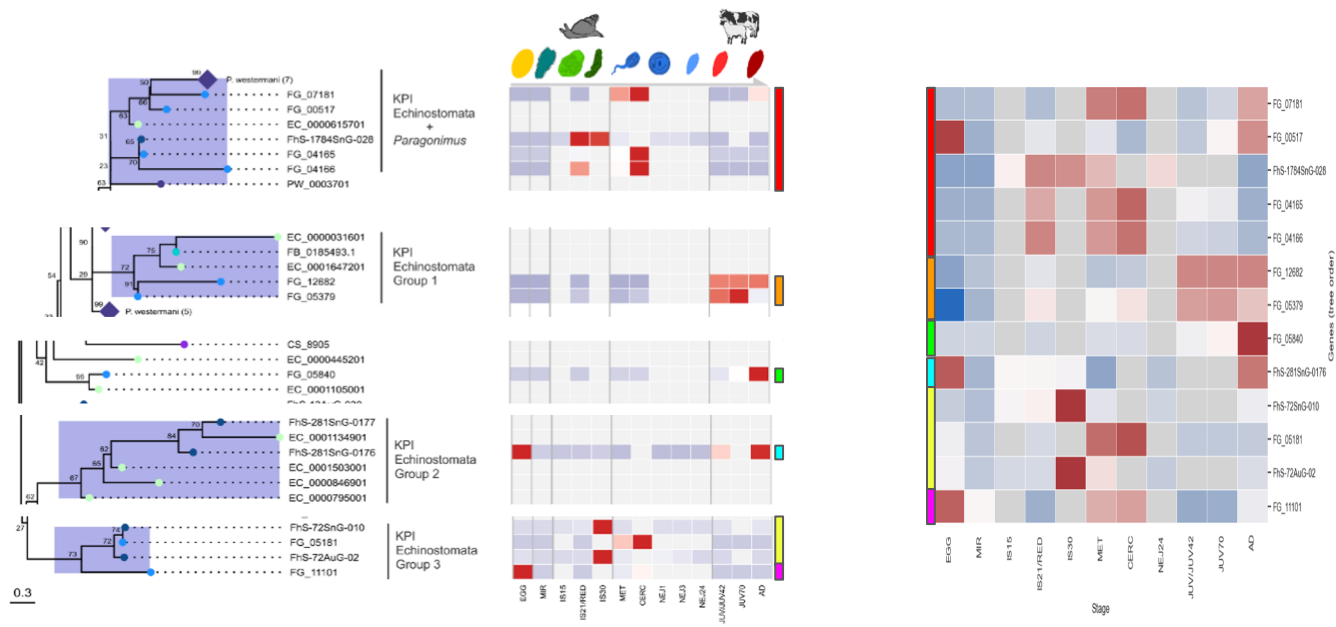


Question: If we normalize differently, do we see the same trends in multigenerational families?

Conclusion: The normalization criteria does not change the expression patterns significantly

Effect of normalization change on key multigenic families

Kunitz inhibitors

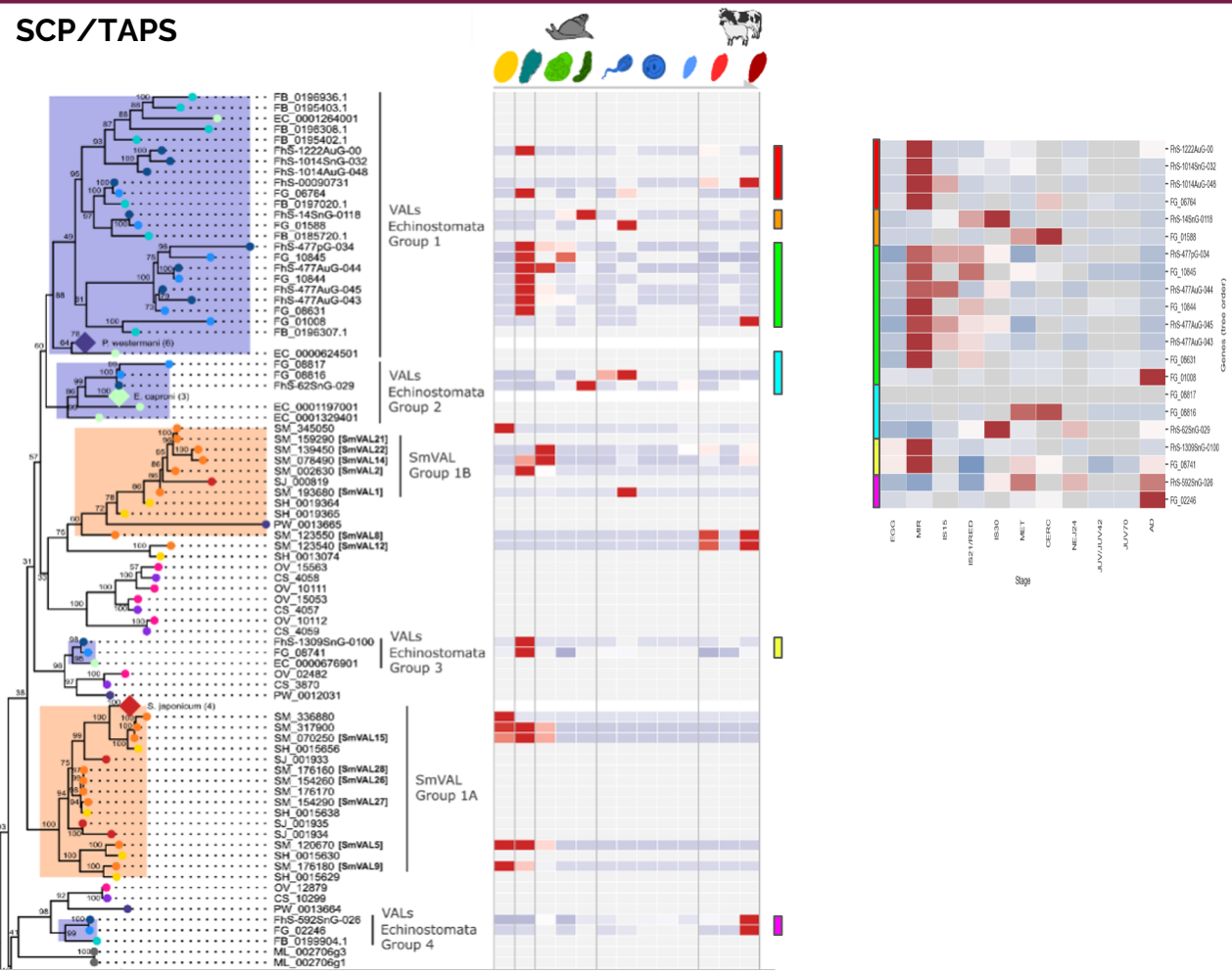


Question: If we normalize differently, do we see the same trends in multigenerational families?

Conclusion: The normalization criteria does not change the expression patterns significantly

Effect of normalization change on key multigenic families

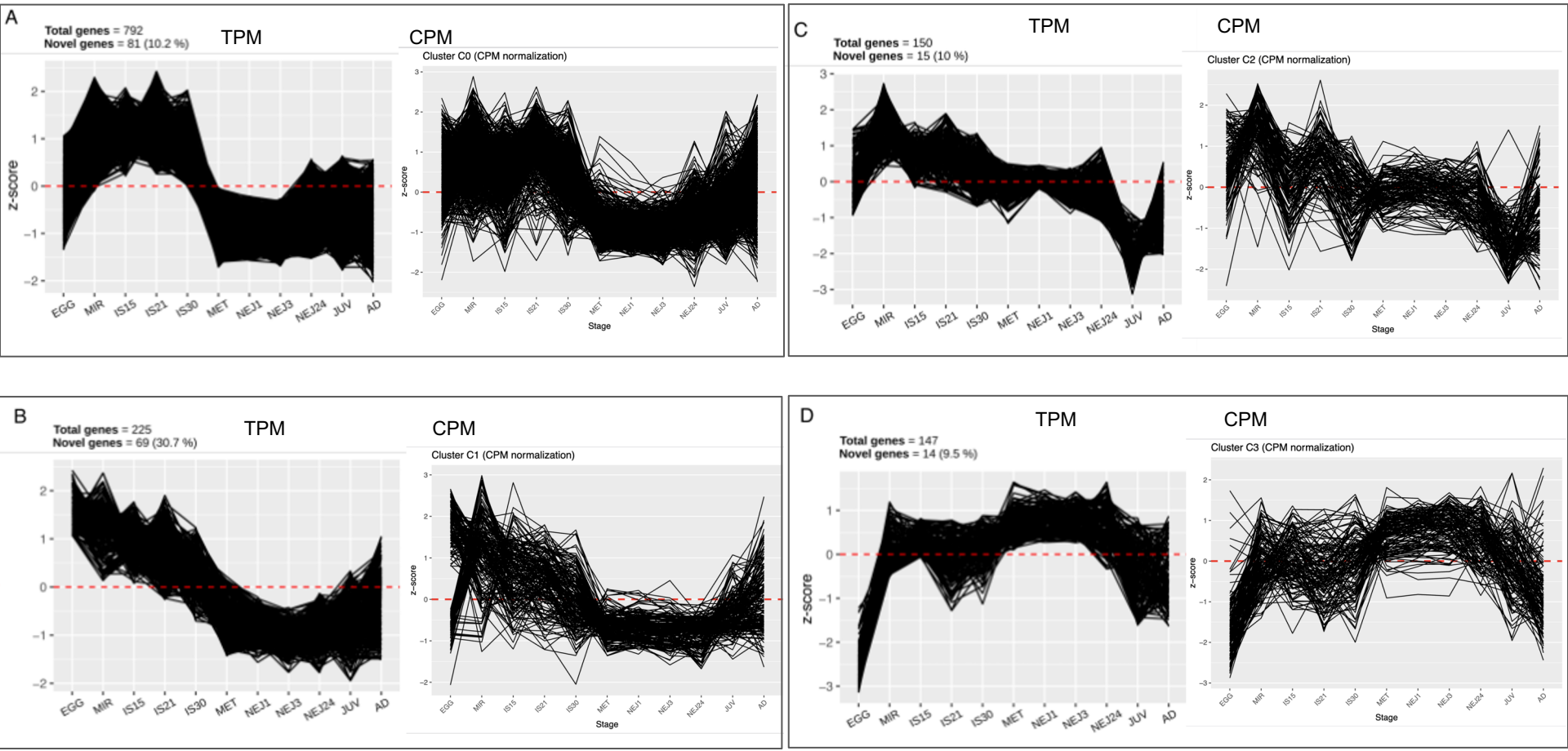
SCP/TAPS



Question: If we normalize differently, do we see the same trends in multigenerational families?

Conclusion: The normalization criteria does not change the expression patterns significantly

Effect of normalization change on major clustering patterns (clust analysis, Fig. 4)



Effect of normalization change on major clustering patterns (clust analysis, Fig. 4)

