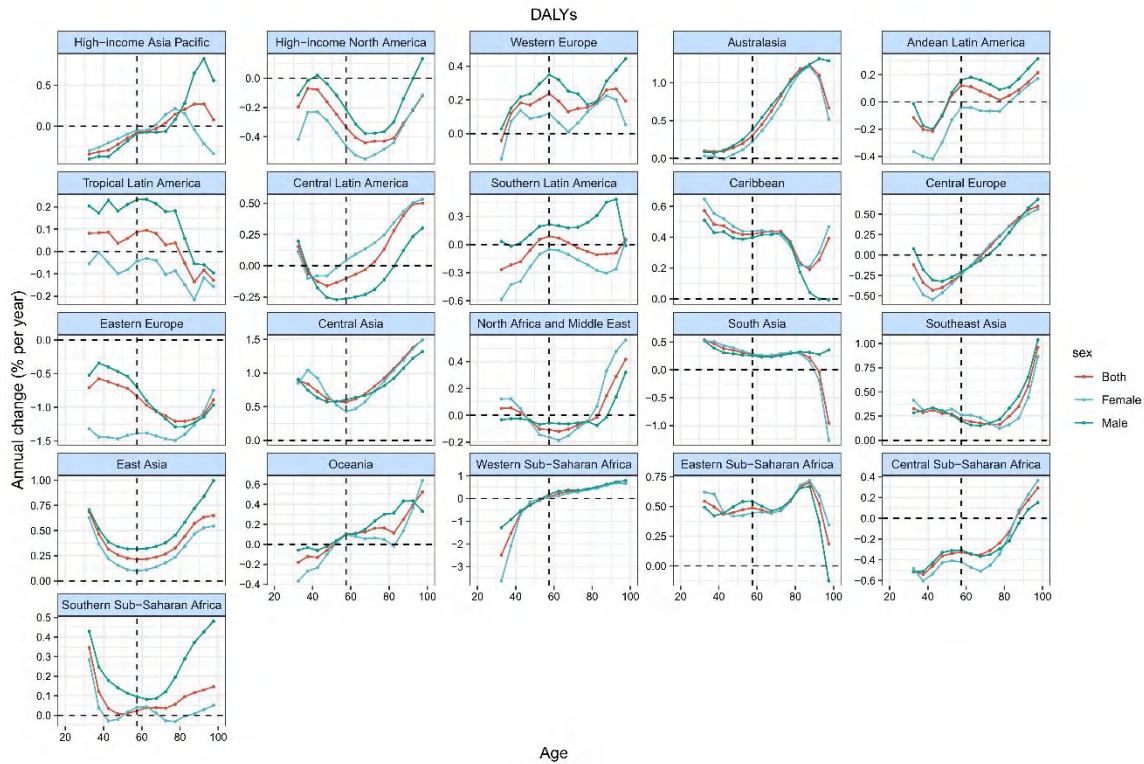
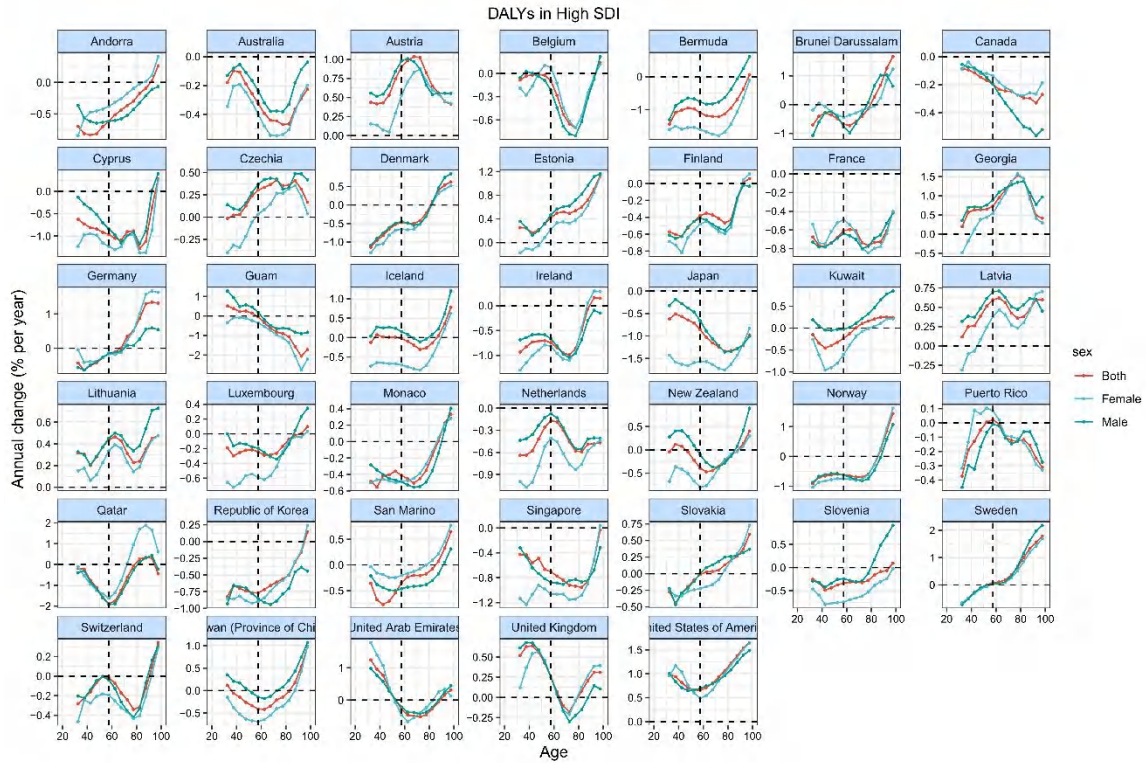


1 Figure S1. The local drifts of atrial fibrillation and flutter DALY in all age
 2 groups in global, 1990-2019. Local drifts of atrial fibrillation and flutter
 3 DALY (estimates from age-period-cohort models) for 19 age groups (5–9 to
 4 95 plus years), 1990–2019. The dots and shaded areas indicate the annual
 5 percentage change of DALY (% per year) and the corresponding 95% CIs.

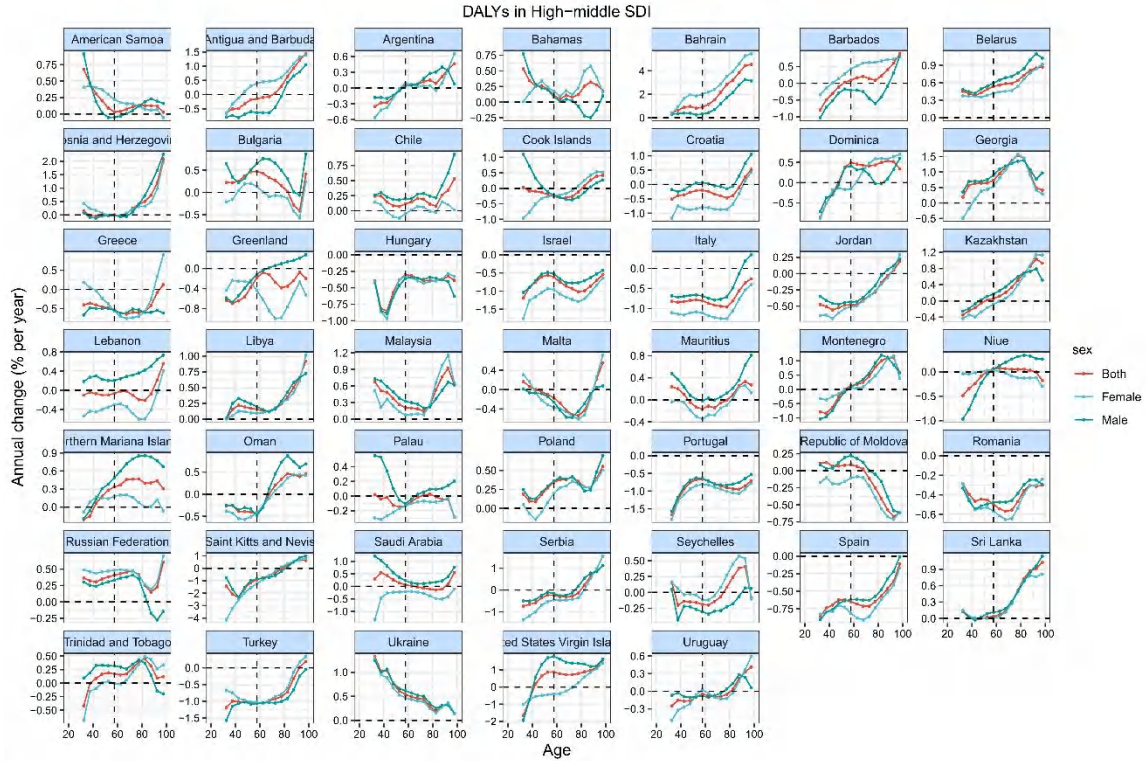


6
 7 Figure S2. The local drifts of atrial fibrillation and flutter DALY in all age
 8 groups in high-SDI countries, 1990-2019. Local drifts of atrial fibrillation and
 9 flutter DALY (estimates from age-period-cohort models) for 19 age groups
 10 (5–9 to 95 plus years), 1990–2019. The dots and shaded areas indicate the
 11 annual percentage change of DALY (% per year) and the corresponding 95%
 12 CIs.



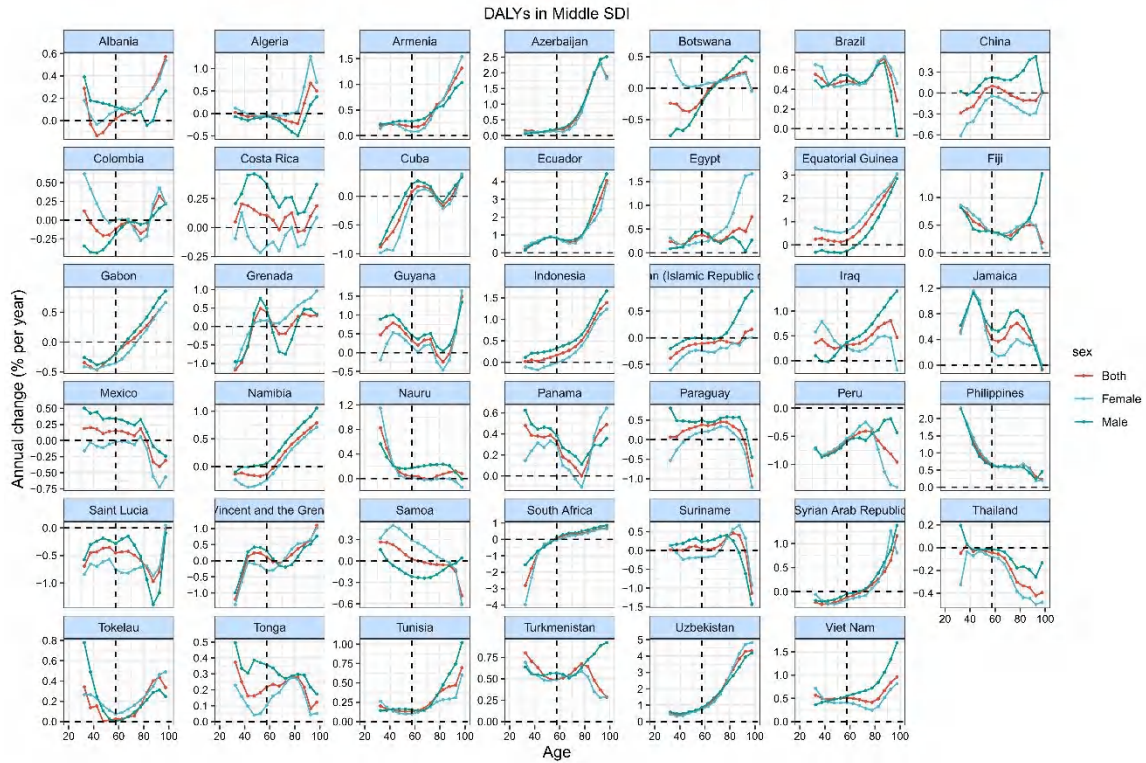
13

14 Figure S3. The local drifts of atrial fibrillation and flutter DALY in all age
 15 groups in high-middle SDI countries, 1990-2019. Local drifts of atrial
 16 fibrillation and flutter DALY (estimates from age-period-cohort models) for
 17 19 age groups (5–9 to 95 plus years), 1990–2019. The dots and shaded areas
 18 indicate the annual percentage change of DALY (% per year) and the
 19 corresponding 95% CIs.



20

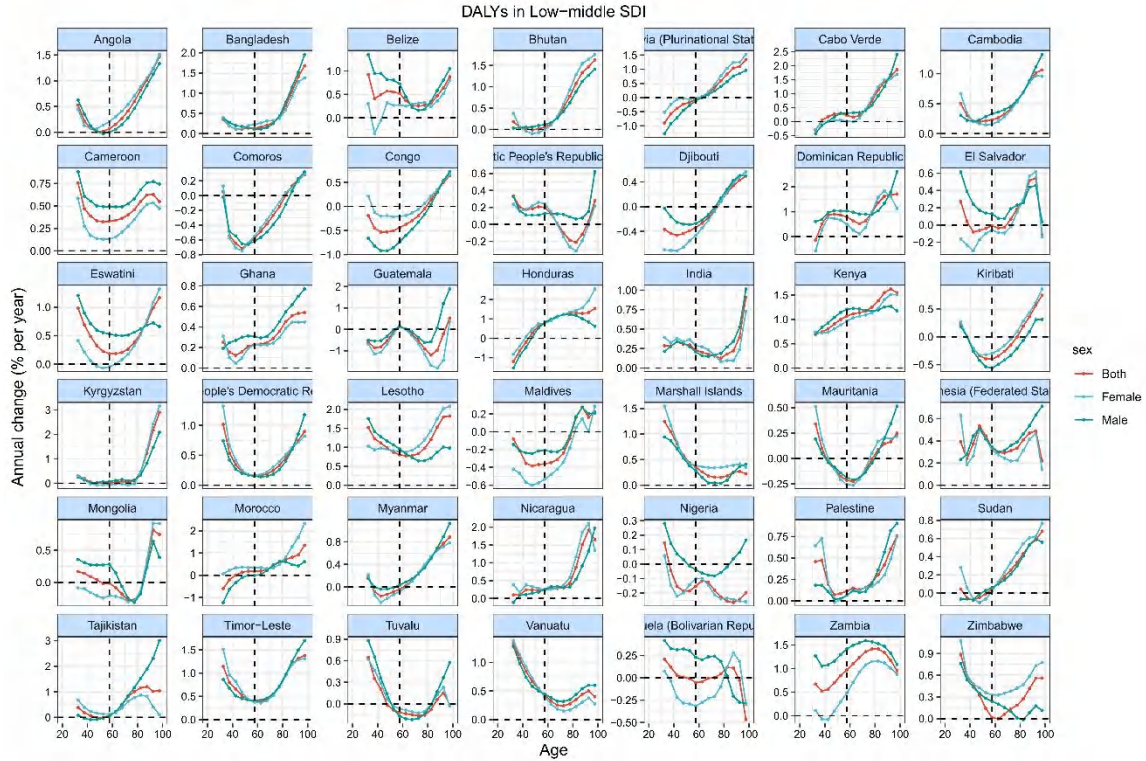
21 Figure S4. The local drifts of atrial fibrillation and flutter DALY in all age
 22 groups in middle-SDI countries, 1990–2019. Local drifts of atrial fibrillation
 23 and flutter DALY (estimates from age-period-cohort models) for 19 age
 24 groups (5–9 to 95 plus years), 1990–2019. The dots and shaded areas
 25 indicate the annual percentage change of DALY (% per year) and the
 26 corresponding 95% CIs.



27

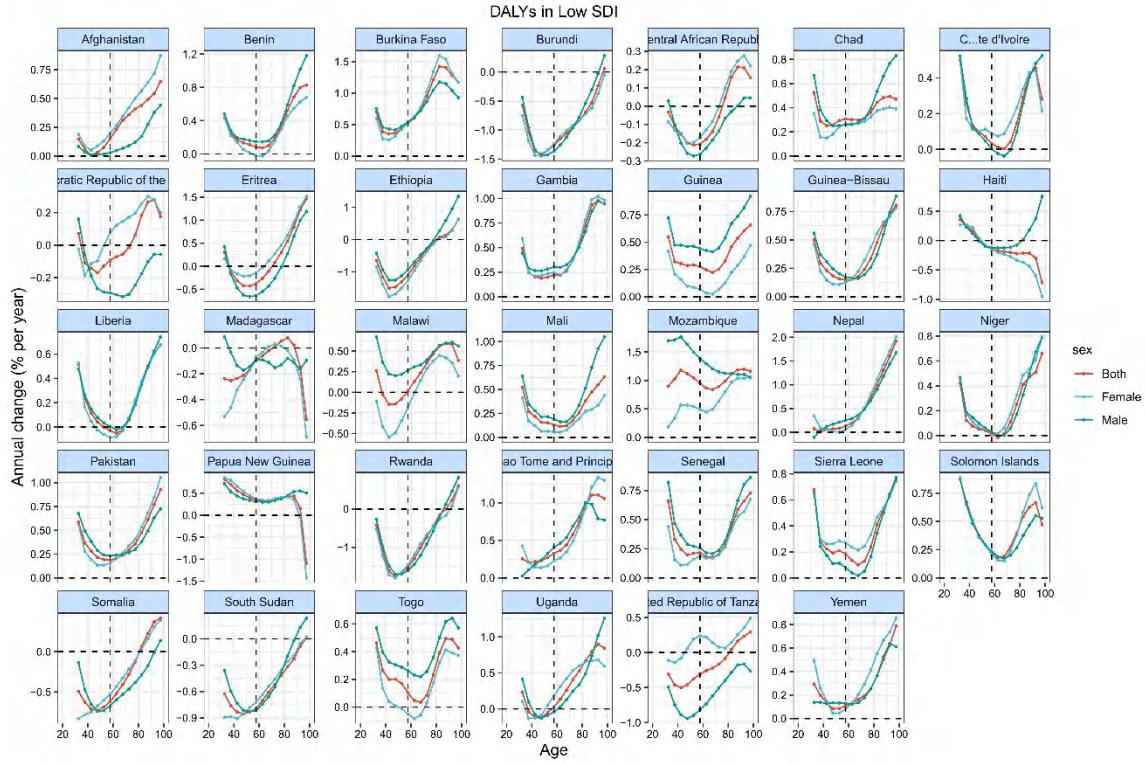
28

29 Figure S5. The local drifts of atrial fibrillation and flutter DALY in all age
 30 groups in low-middle SDI countries, 1990–2019. Local drifts of atrial
 31 fibrillation and flutter DALY (estimates from age-period-cohort models) for
 32 19 age groups (5–9 to 95 plus years), 1990–2019. The dots and shaded areas
 33 indicate the annual percentage change of DALY (% per year) and the
 34 corresponding 95% CIs.



35

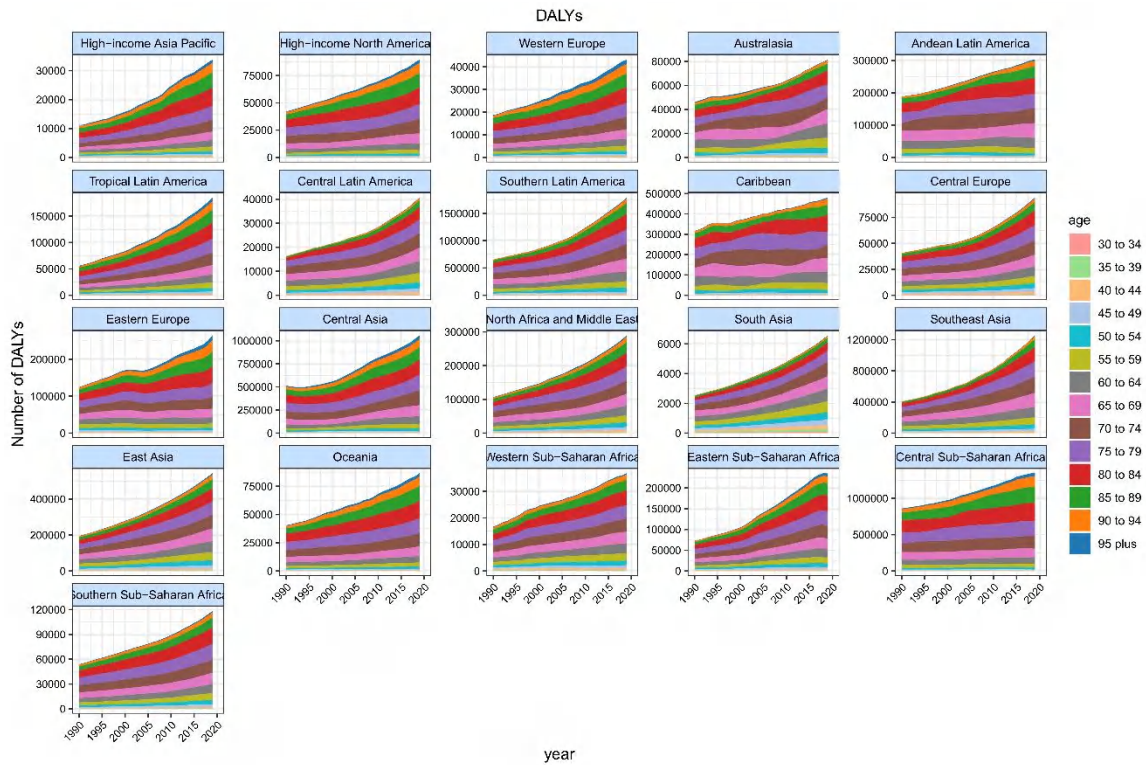
36 Figure S6. The local drifts of atrial fibrillation and flutter DALY in all age
 37 groups in low-SDI countries, 1990–2019. Local drifts of atrial fibrillation and
 38 flutter DALY (estimates from age-period-cohort models) for 19 age groups
 39 (5–9 to 95 plus years), 1990–2019. The dots and shaded areas indicate the
 40 annual percentage change of DALY (% per year) and the corresponding 95%
 41 CIs.



42

43 Figure S7.Age distribution of absolute cases of atrial fibrillation and flutter

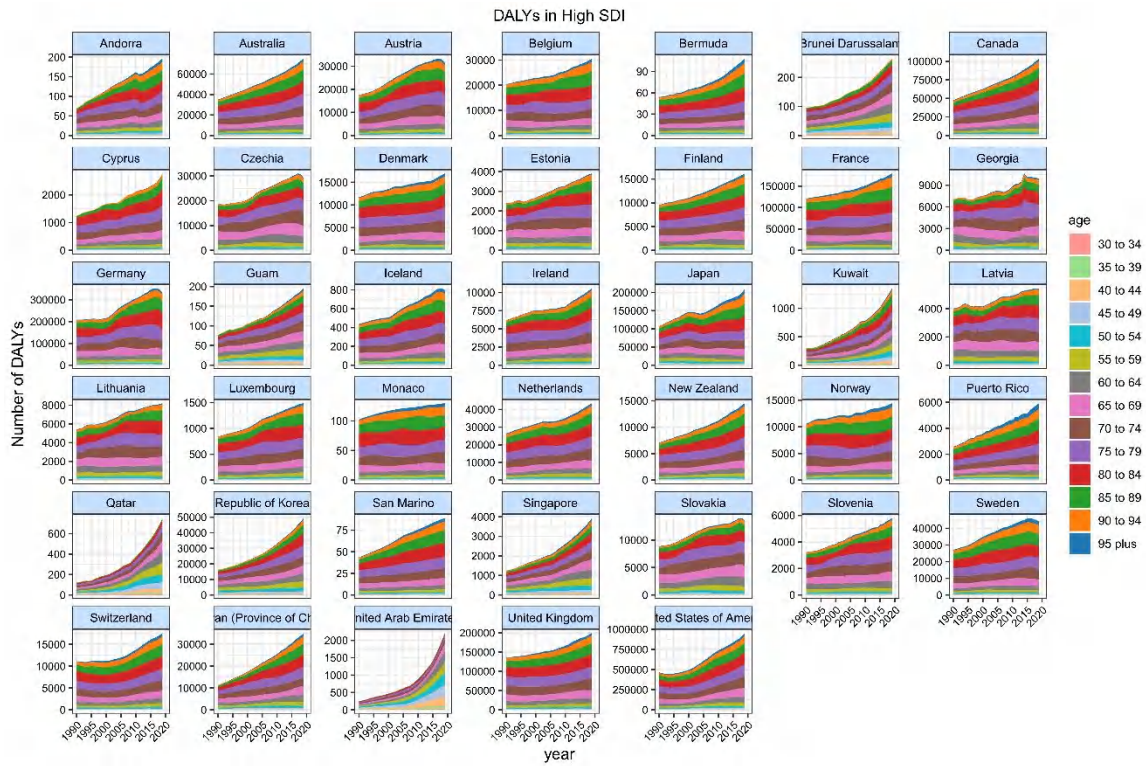
44 DALY in global,1990-2019.



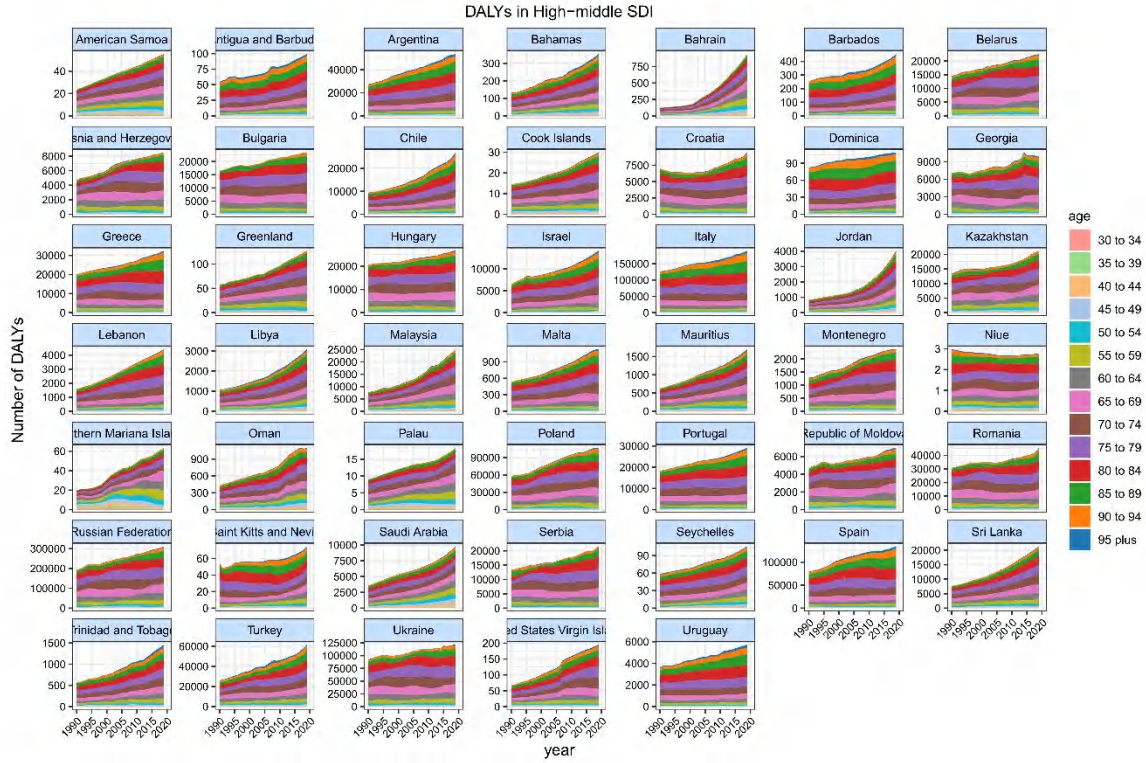
45

46

47 Figure S8. Age distribution of absolute cases of atrial fibrillation and flutter
 48 DALY in high-SDI countries, 1990–2019.

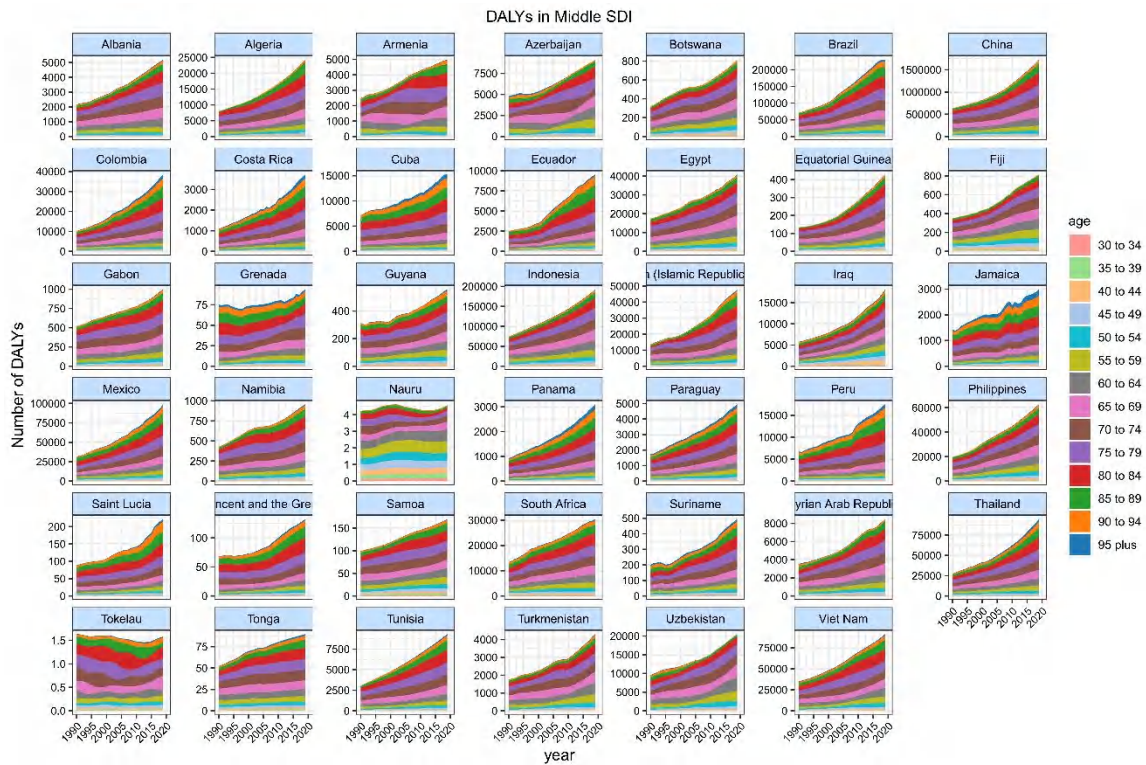


49
 50 Figure S9. Age distribution of absolute cases of atrial fibrillation and flutter
 51 DALY in high-middle SDI countries, 1990–2019.



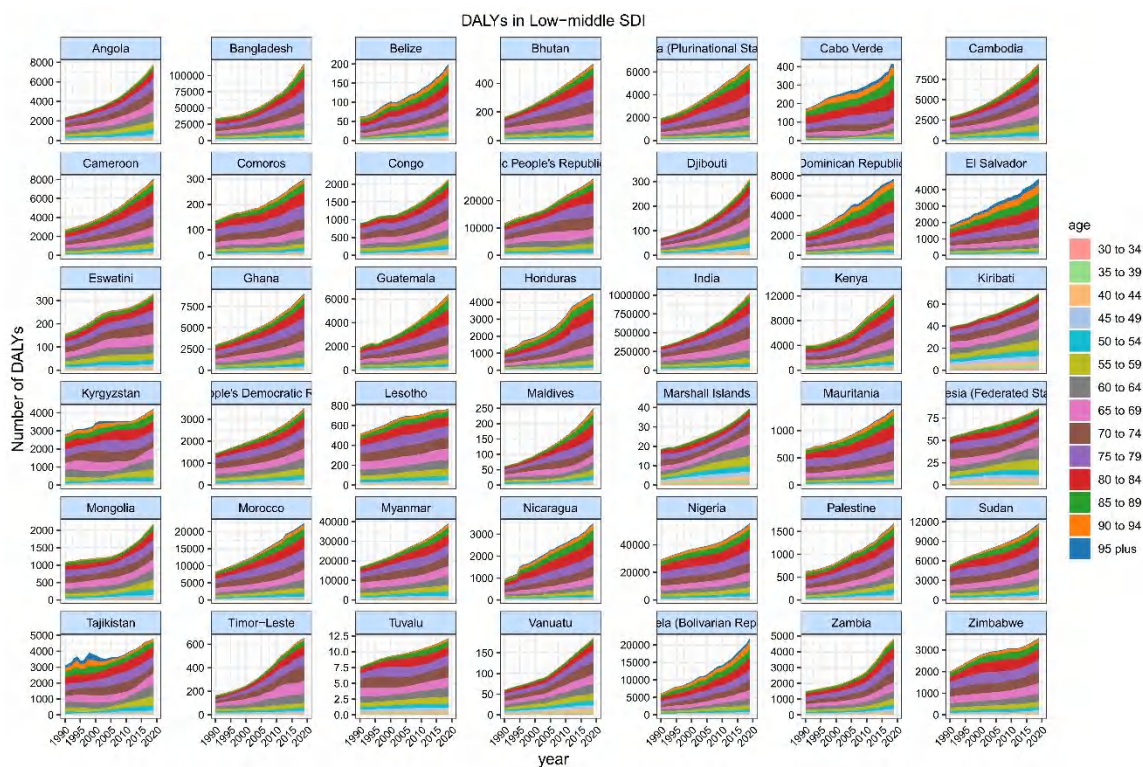
52

53 Figure S10. Age distribution of absolute cases of atrial fibrillation and flutter
 54 DALY in middle-SDI countries, 1990–2019.

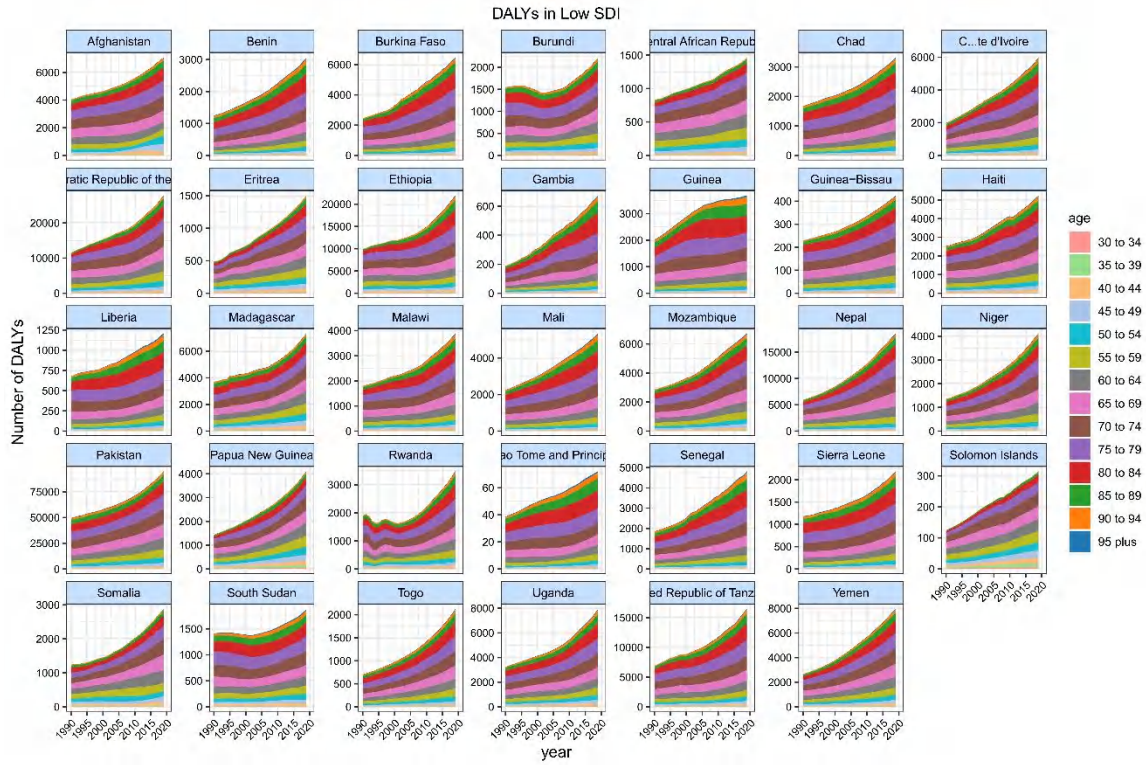


55

56 Figure S11. Age distribution of absolute cases of atrial fibrillation and flutter
 57 DALY in low-middle SDI countries, 1990–2019.

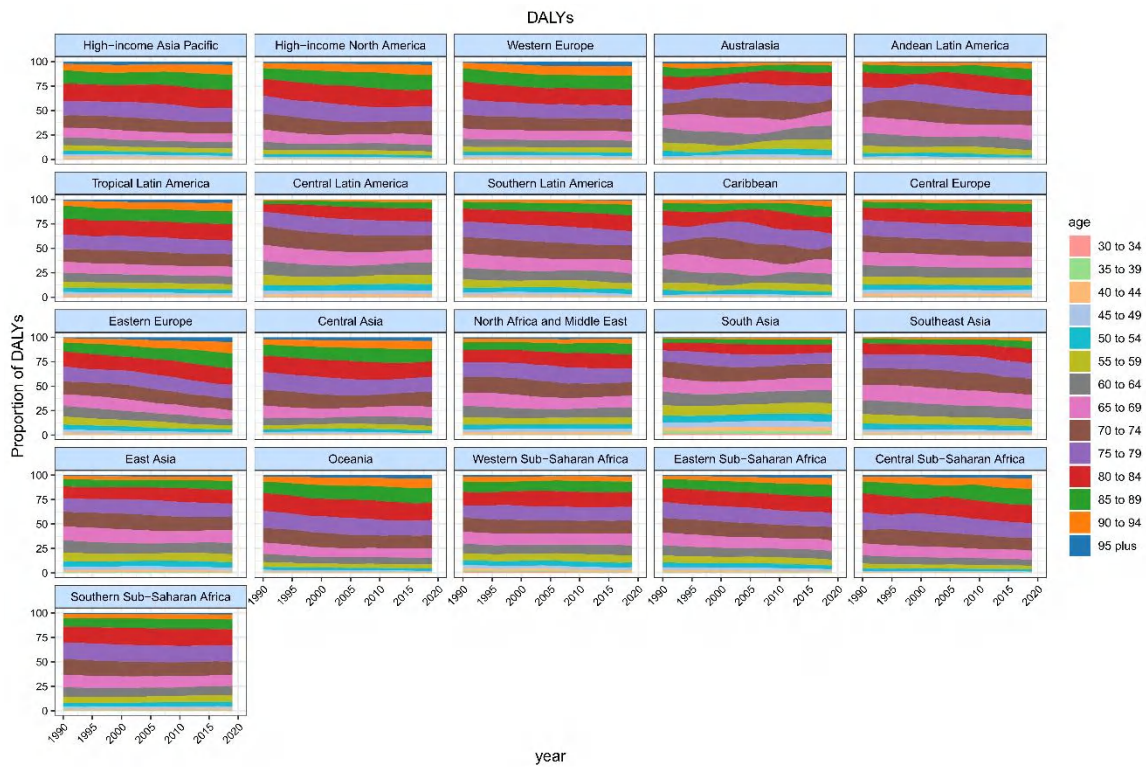


58
 59
 60 Figure S12. Age distribution of absolute cases of atrial fibrillation and flutter
 61 DALY in low-SDI countries, 1990–2019.



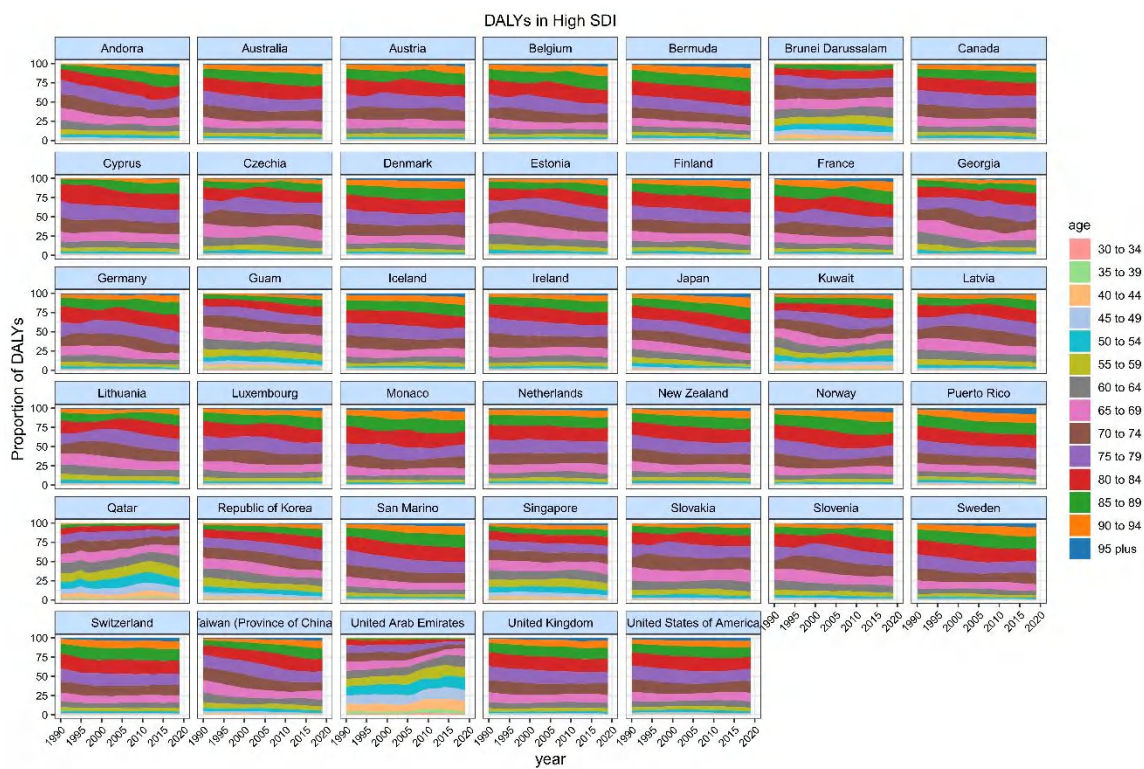
62

63 Figure S13. Age distribution of the relative proportion of atrial fibrillation
 64 and flutter DALY in the global, 1990-2019.

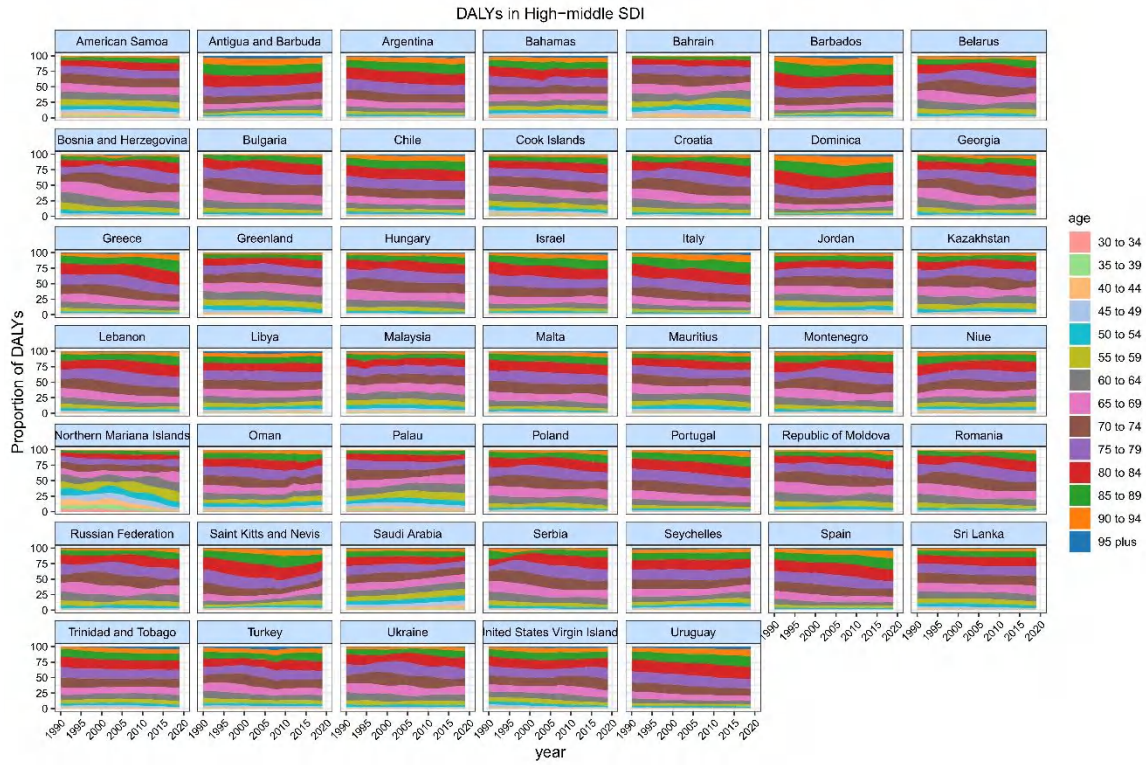


65

66 Figure S14. Age distribution of the relative proportion of atrial fibrillation
67 and flutter DALY in high-SDI countries, 1990-2019.

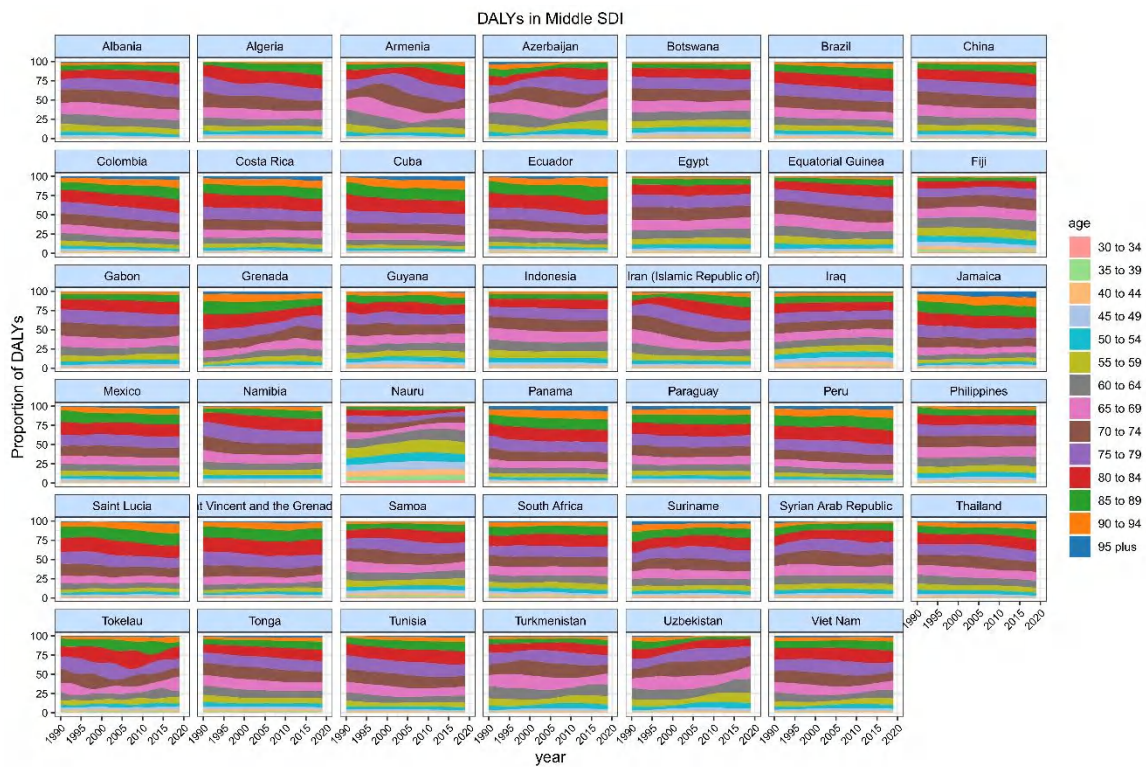


68
69 Figure S15. Age distribution of the relative proportion of atrial fibrillation
70 and flutter DALY in high-middle SDI countries, 1990-2019.



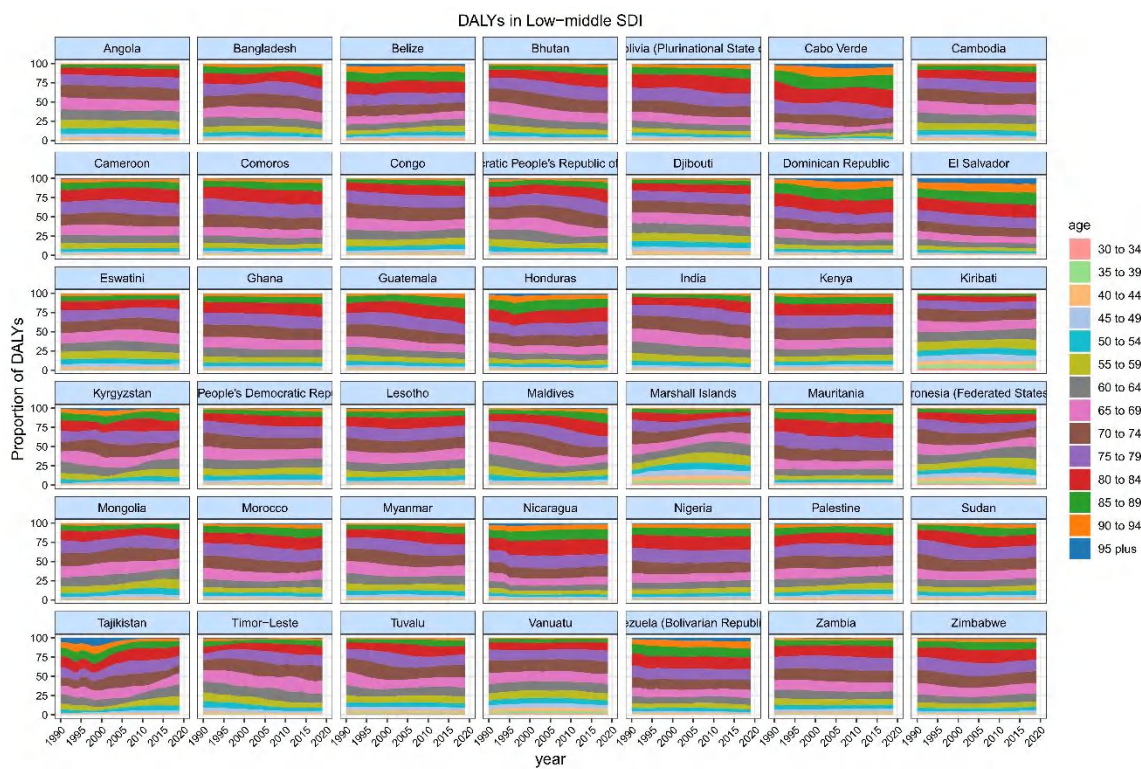
71

72 Figure S16. Age distribution of the relative proportion of atrial fibrillation
 73 and flutter DALY in middle-SDI countries, 1990-2019.



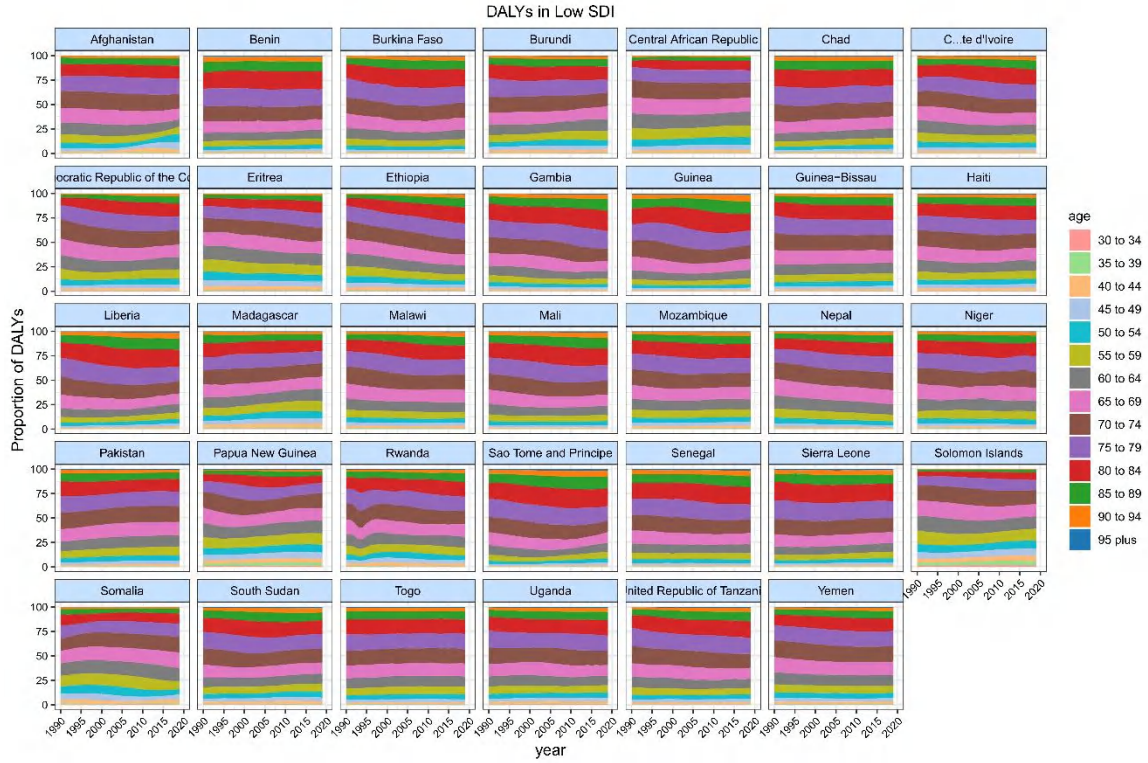
74

75 Figure S17. Age distribution of the relative proportion of atrial fibrillation
 76 and flutter DALY in low-middle SDI countries, 1990-2019.



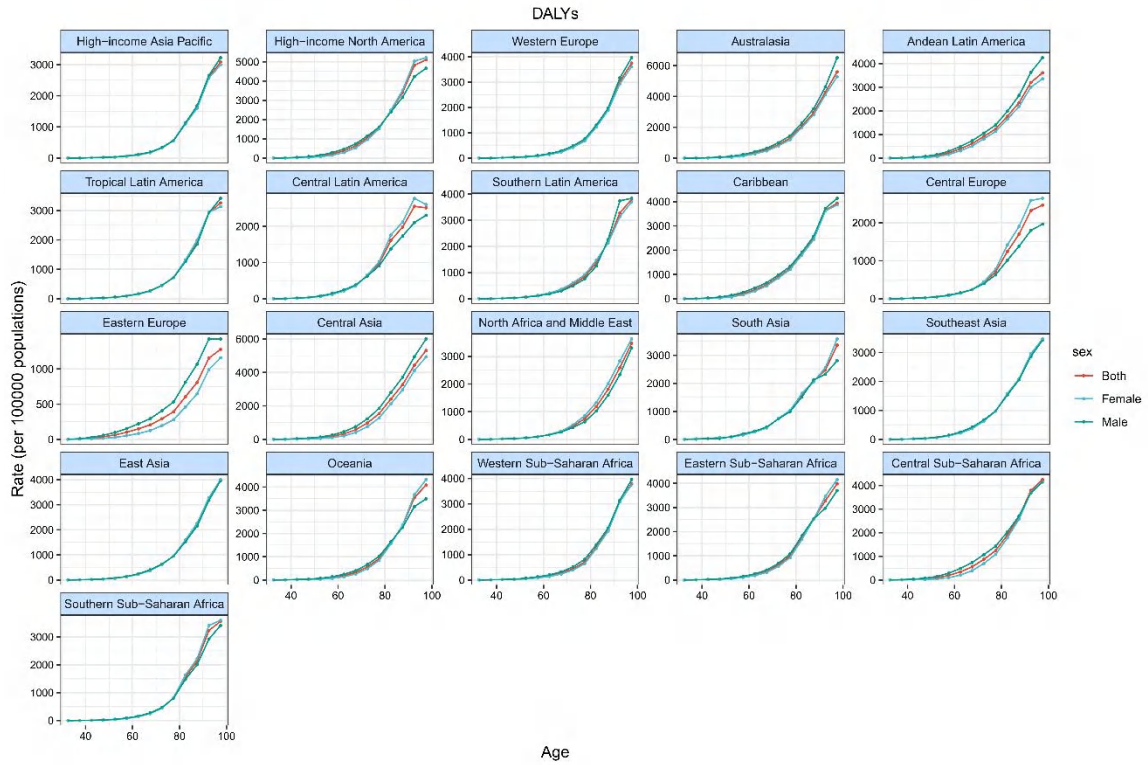
77

78 Figure S18. Age distribution of the relative proportion of atrial fibrillation
 79 and flutter DALY in low-SDI countries, 1990-2019.



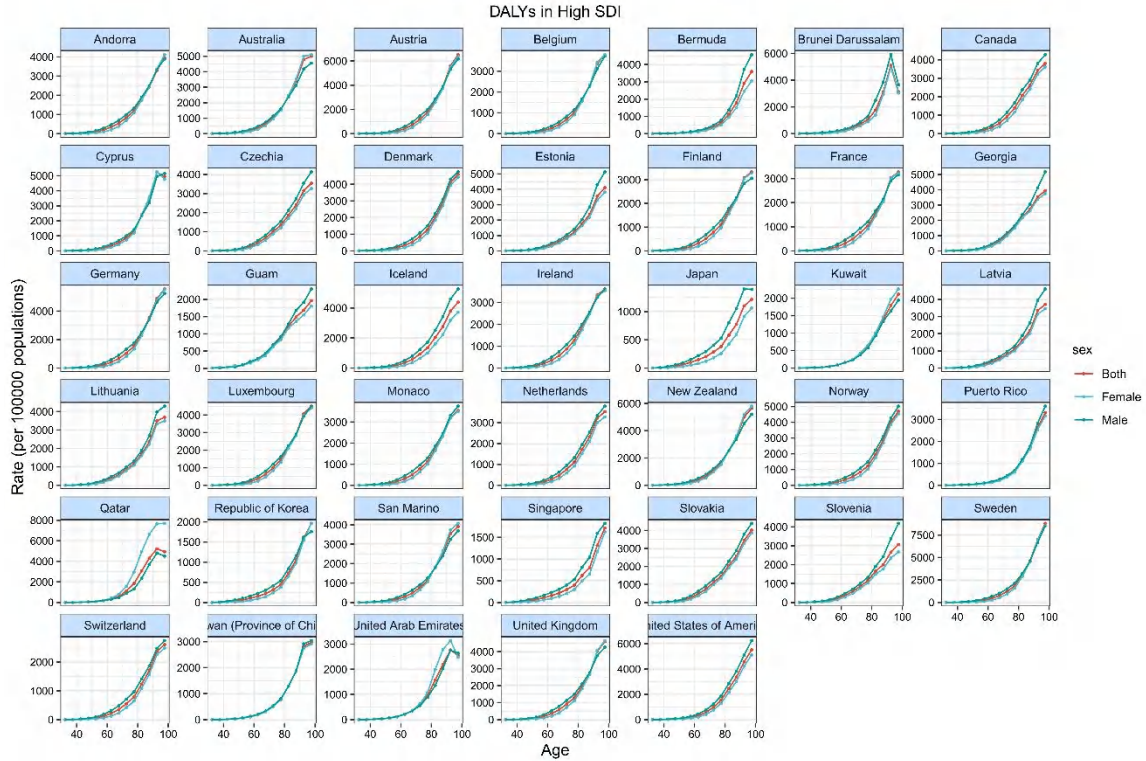
80

81 Figure S19. Age effects on atrial fibrillation and flutter DALY in global,
 82 1990–2019 Age effects are shown by the fitted longitudinal age curves of
 83 incidence (per 100,000 person-years) adjusted for period deviations.



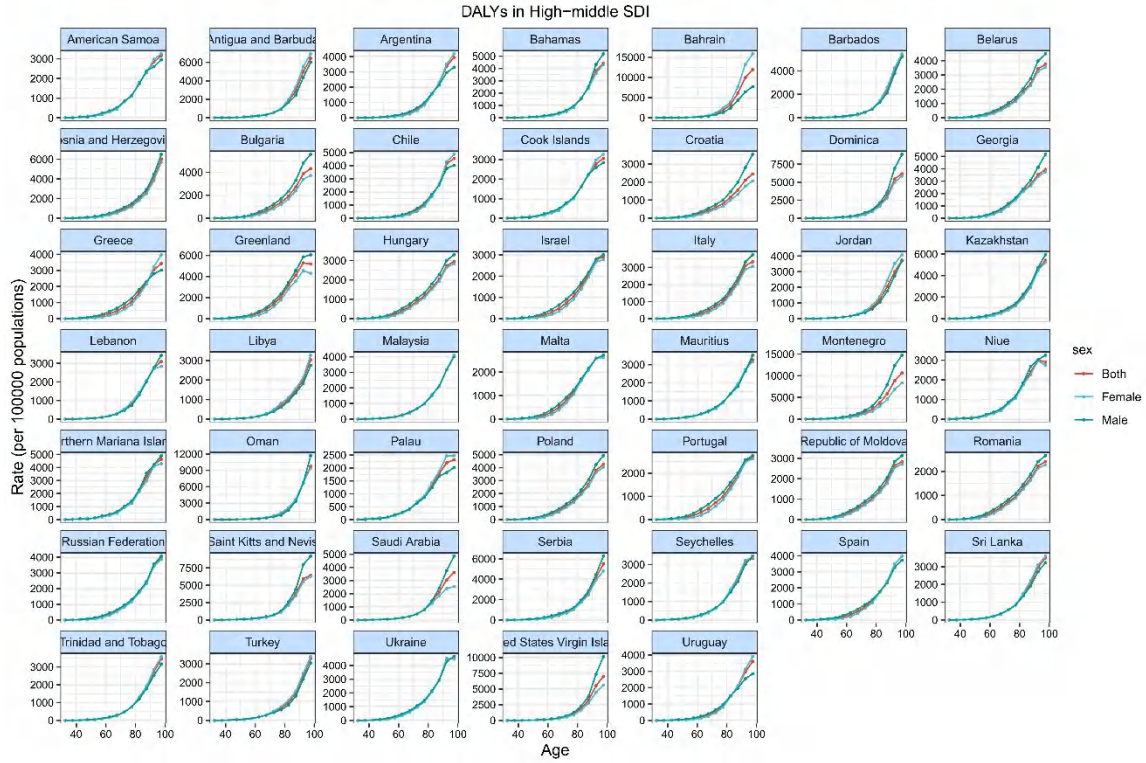
84

85 Figure S20. Age effects on atrial fibrillation and flutter DALY in high-SDI
 86 countries Age effects are shown by the fitted longitudinal age curves of
 87 incidence (per 100,000 person-years) adjusted for period deviations.



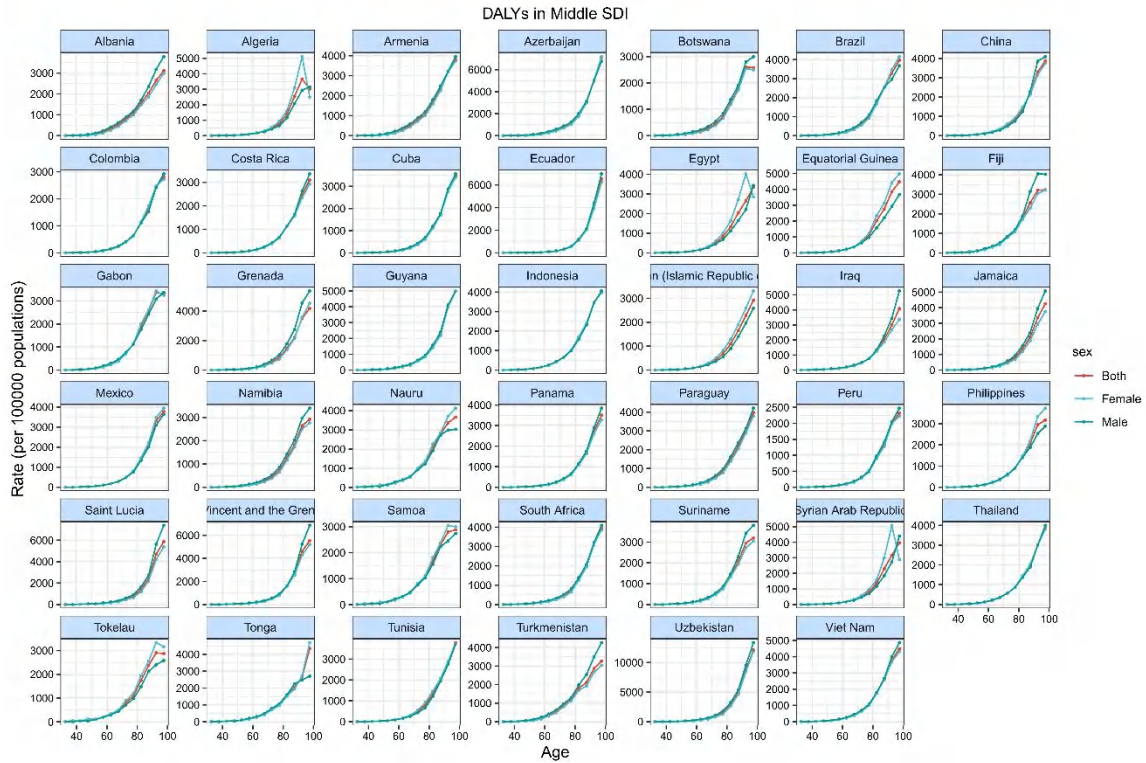
88

89 Figure S21. Age effects on atrial fibrillation and flutter DALY in
 90 high-middle SDI countries Age effects are shown by the fitted longitudinal
 91 age curves of incidence (per 100,000 person-years) adjusted for period
 92 deviations.



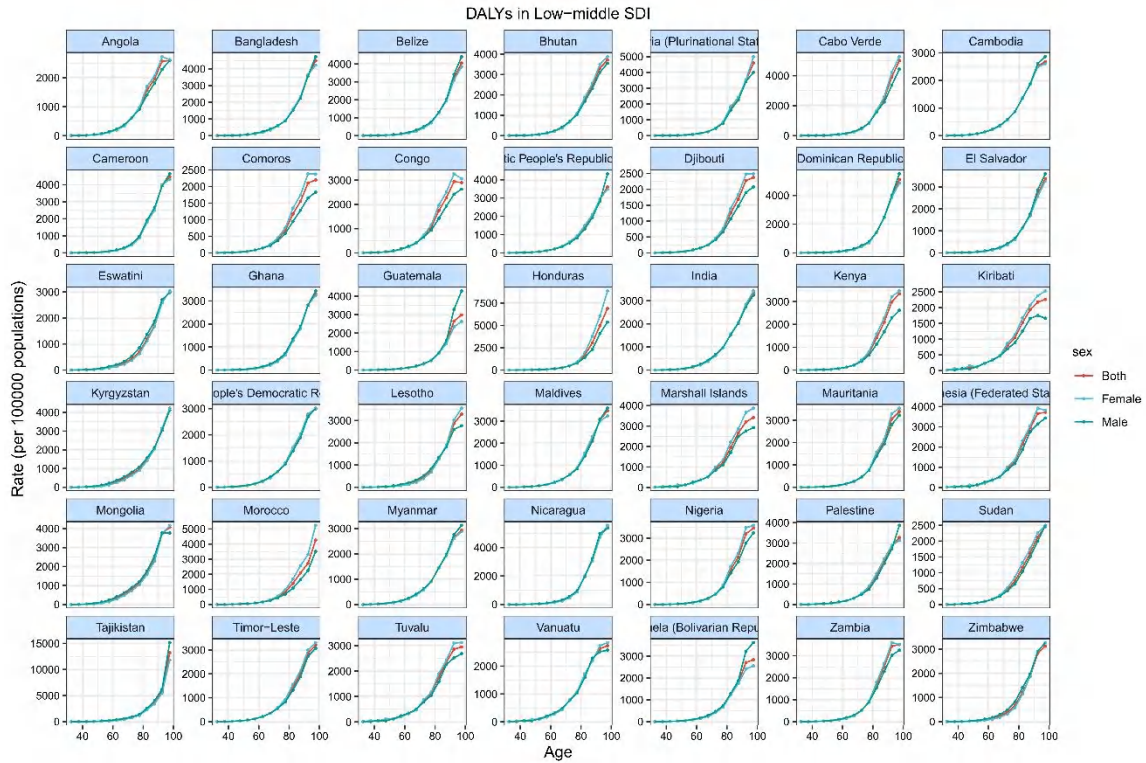
93

94 Figure S22. Age effects on atrial fibrillation and flutter DALY in middle-SDI
 95 countries Age effects are shown by the fitted longitudinal age curves of
 96 incidence (per 100,000 person-years) adjusted for period deviations.



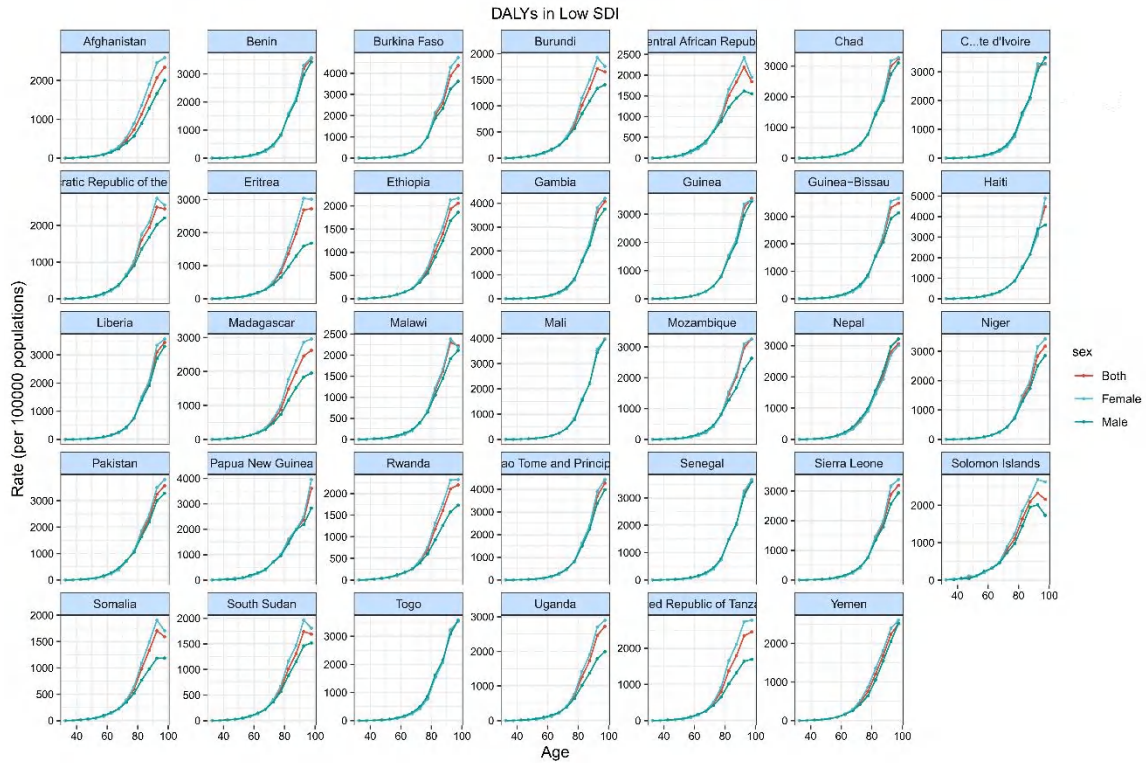
97

98 Figure S23. Age effects on atrial fibrillation and flutter DALY in low-middle
 99 SDI countries Age effects are shown by the fitted longitudinal age curves of
 100 incidence (per 100,000 person-years) adjusted for period deviations.



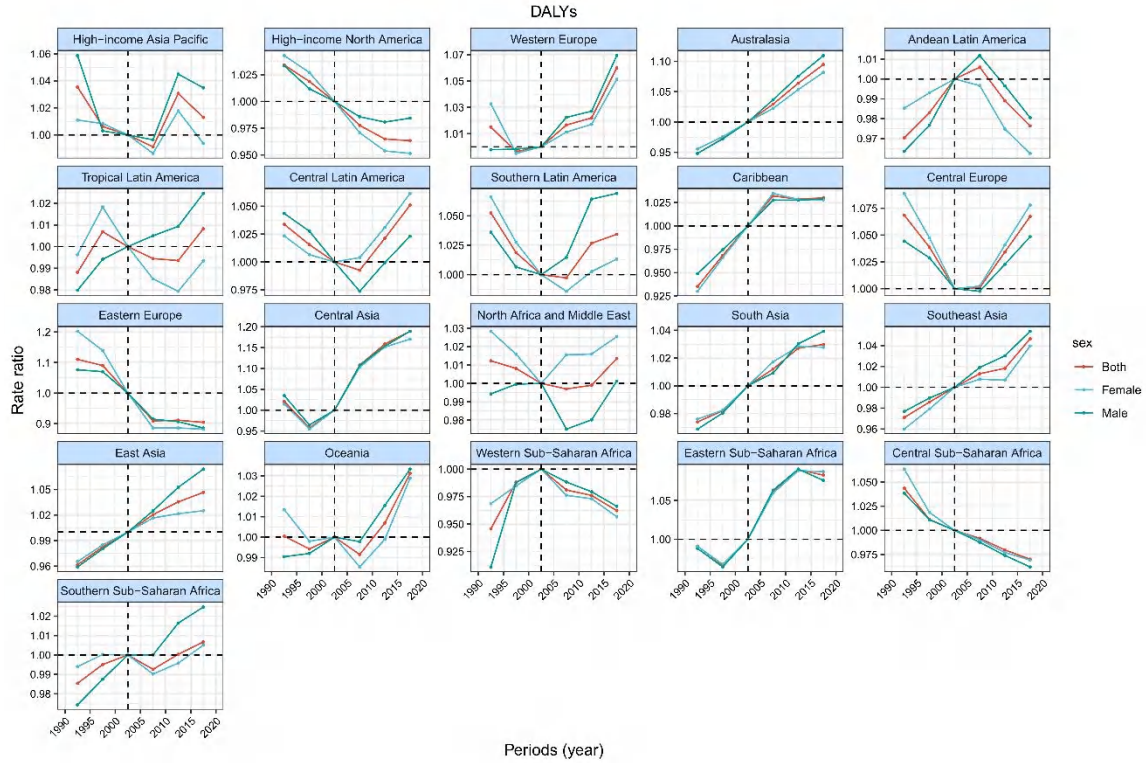
101

102 Figure S24. Age effects on atrial fibrillation and flutter DALY in low-SDI
 103 countries Age effects are shown by the fitted longitudinal age curves of
 104 incidence (per 100,000 person-years) adjusted for period deviations.



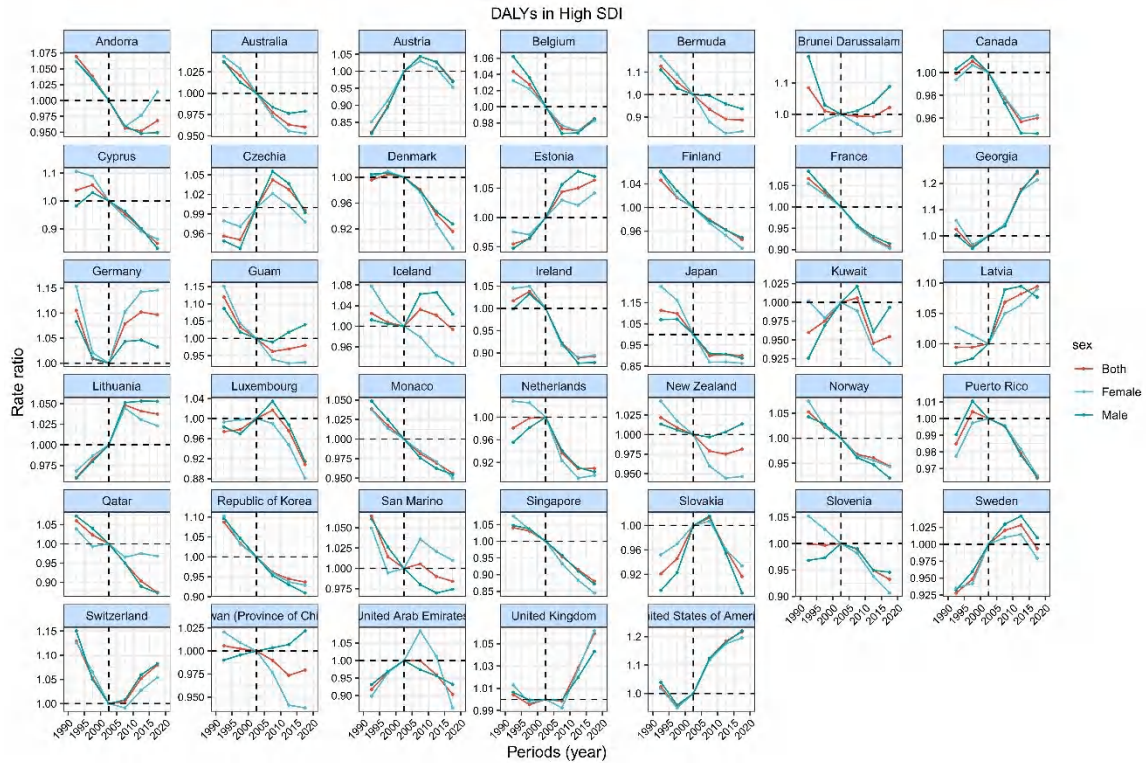
105

106 Figure S25. Period effects on atrial fibrillation and flutter DALY in global,
 107 1990-2019 Period effects are shown by the relative risk of DALY (mortality
 108 rate ratio) and computed as the ratio of age-specific rates from 1990–1994 to
 109 2015–2019 (2000–2005 as the referent period). The dots and shaded areas
 110 denote DALY rates or rate ratios and their corresponding 95% CIs.



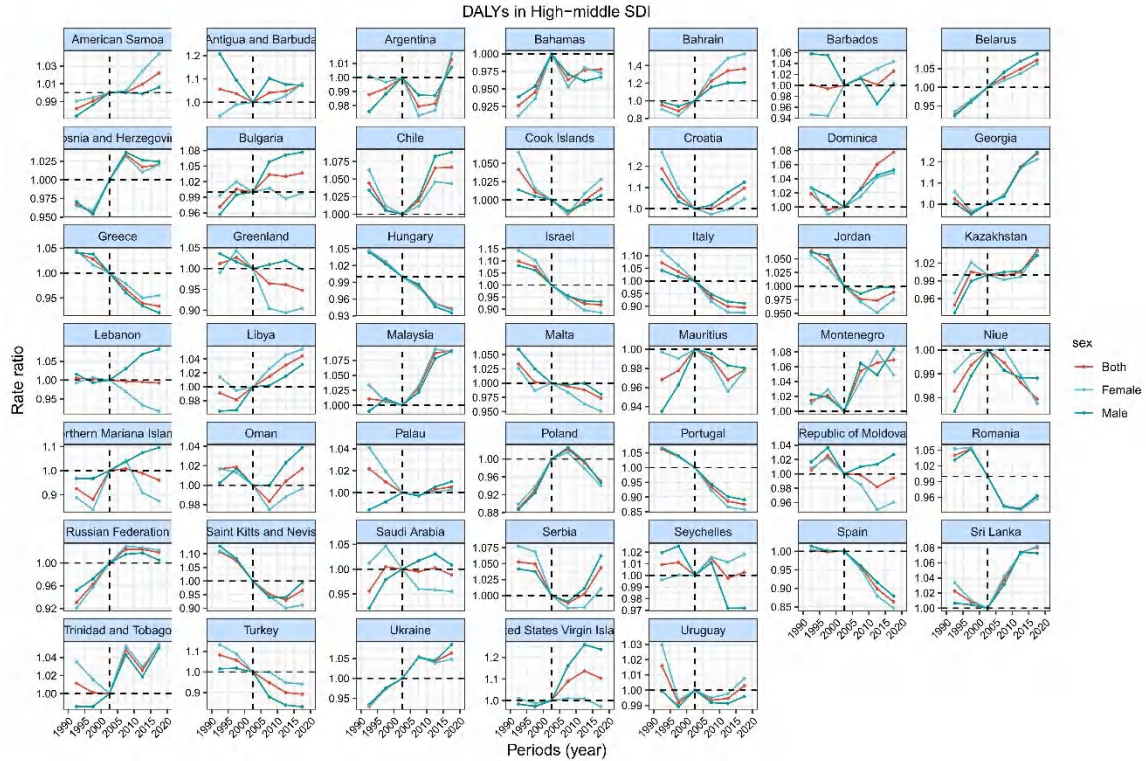
111

112 Figure S26. Period effects on atrial fibrillation and flutter DALY in high-SDI
 113 countries. Period effects are shown by the relative risk of DALY (mortality
 114 rate ratio) and computed as the ratio of age-specific rates from 1990–1994 to
 115 2015–2019 (2000–2005 as the referent period). The dots and shaded areas
 116 denote DALY rates or rate ratios and their corresponding 95% CIs.



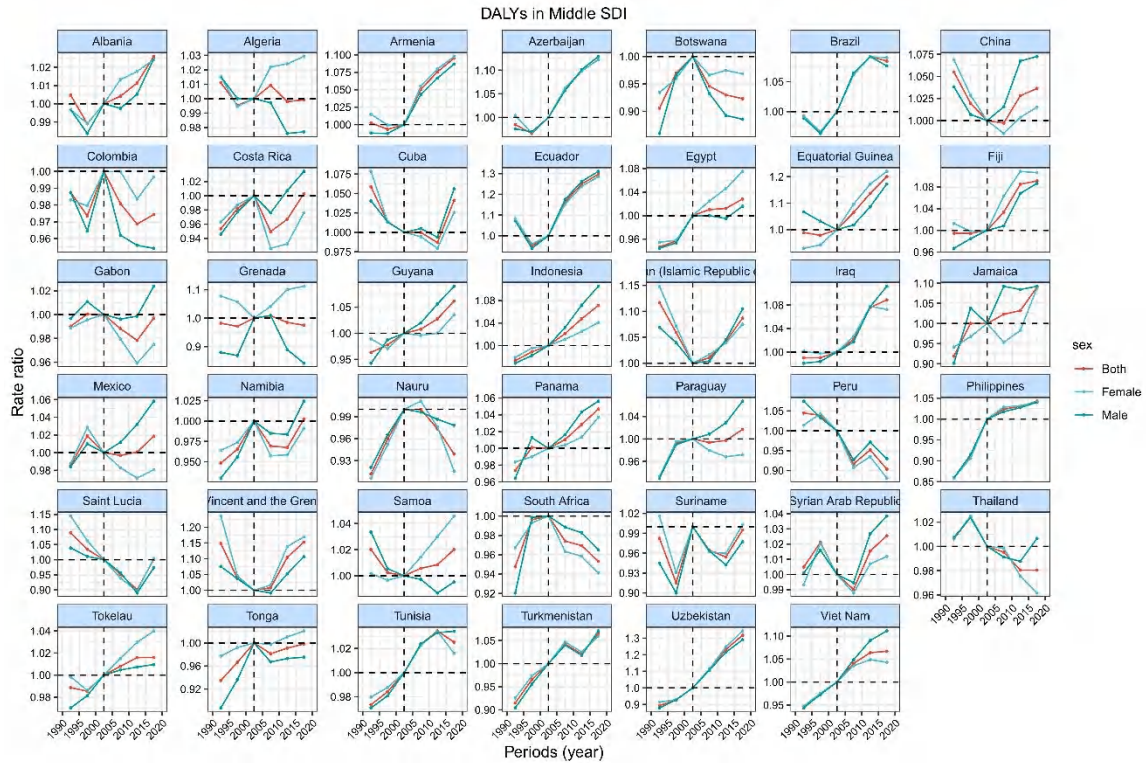
117

118 Figure S27. Period effects on atrial fibrillation and flutter DALY in
 119 high-middle SDI countries. Period effects are shown by the relative risk of
 120 DALY (mortality rate ratio) and computed as the ratio of age-specific rates
 121 from 1990–1994 to 2015–2019 (2000–2005 as the referent period). The dots
 122 and shaded areas denote DALY rates or rate ratios and their corresponding
 123 95% CIs.



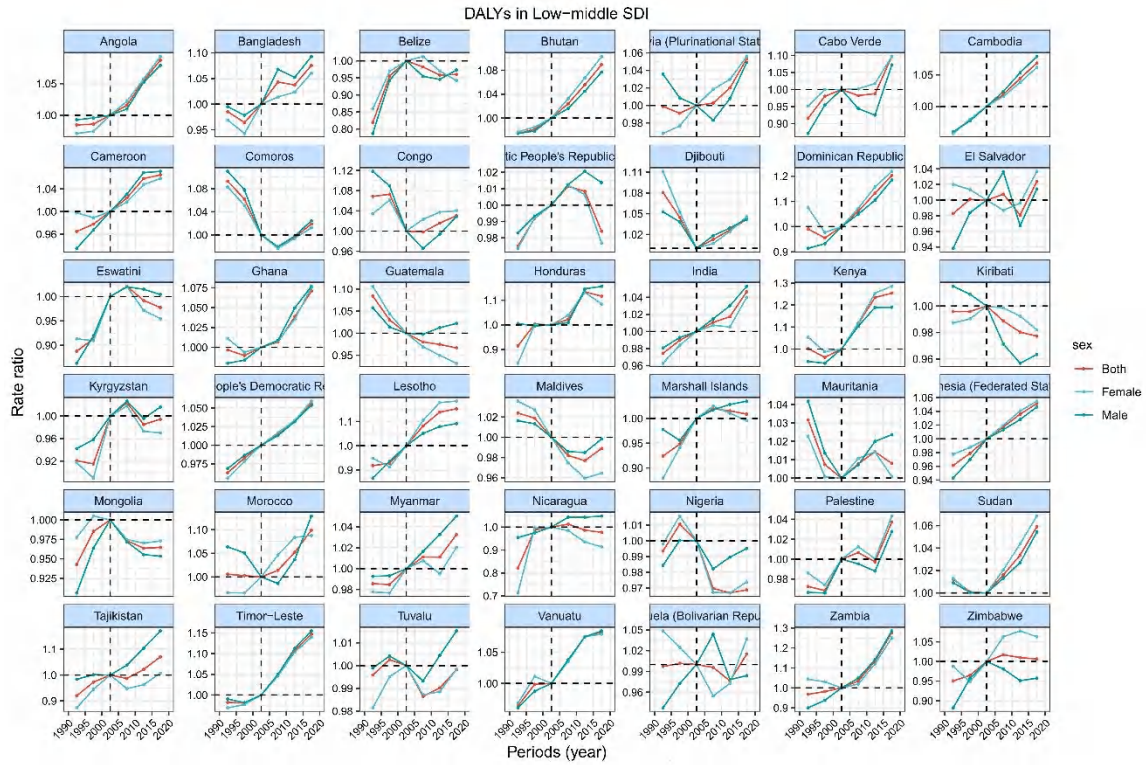
124

125 Figure S28. Period effects on atrial fibrillation and flutter DALY in
 126 middle-SDI countries. Period effects are shown by the relative risk of DALY
 127 (mortality rate ratio) and computed as the ratio of age-specific rates from
 128 1990–1994 to 2015–2019 (2000–2005 as the referent period). The dots and
 129 shaded areas denote DALY rates or rate ratios and their corresponding 95%
 130 CIs.



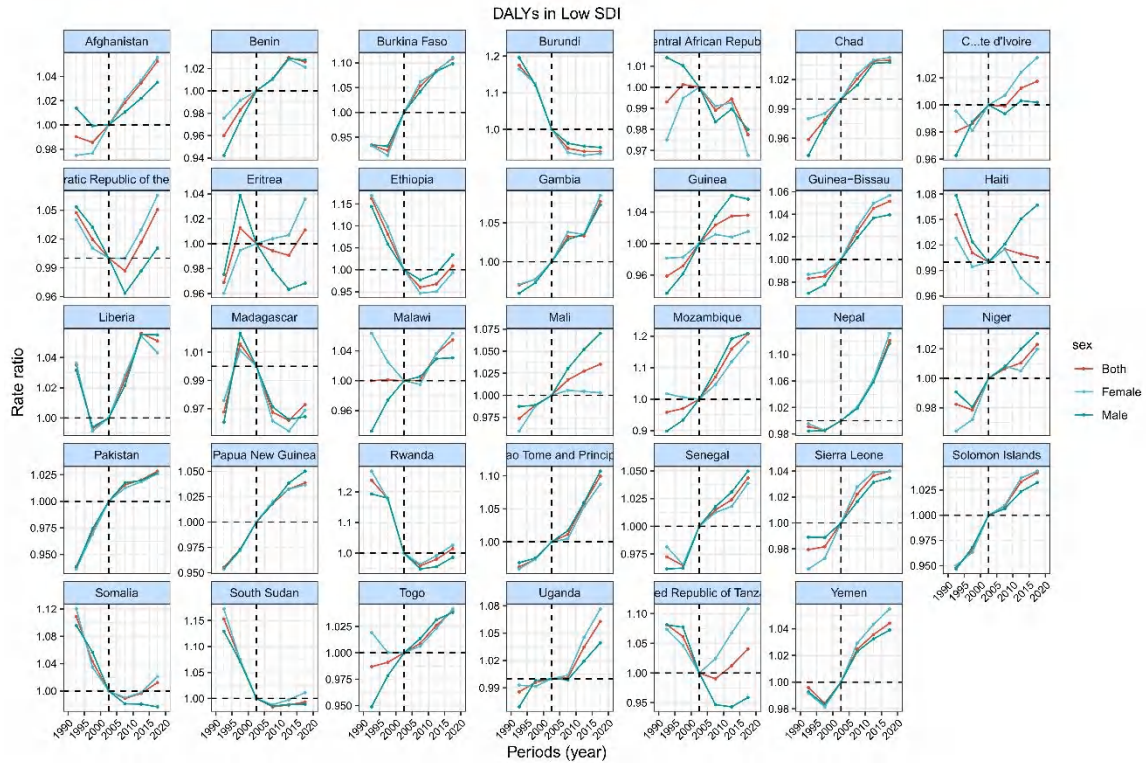
131

132 Figure S29. Period effects on atrial fibrillation and flutter DALY in
 133 low-middle SDI countries. Period effects are shown by the relative risk of
 134 DALY (mortality rate ratio) and computed as the ratio of age-specific rates
 135 from 1990–1994 to 2015–2019 (2000–2005 as the referent period). The dots
 136 and shaded areas denote DALY rates or rate ratios and their corresponding
 137 95% CIs.



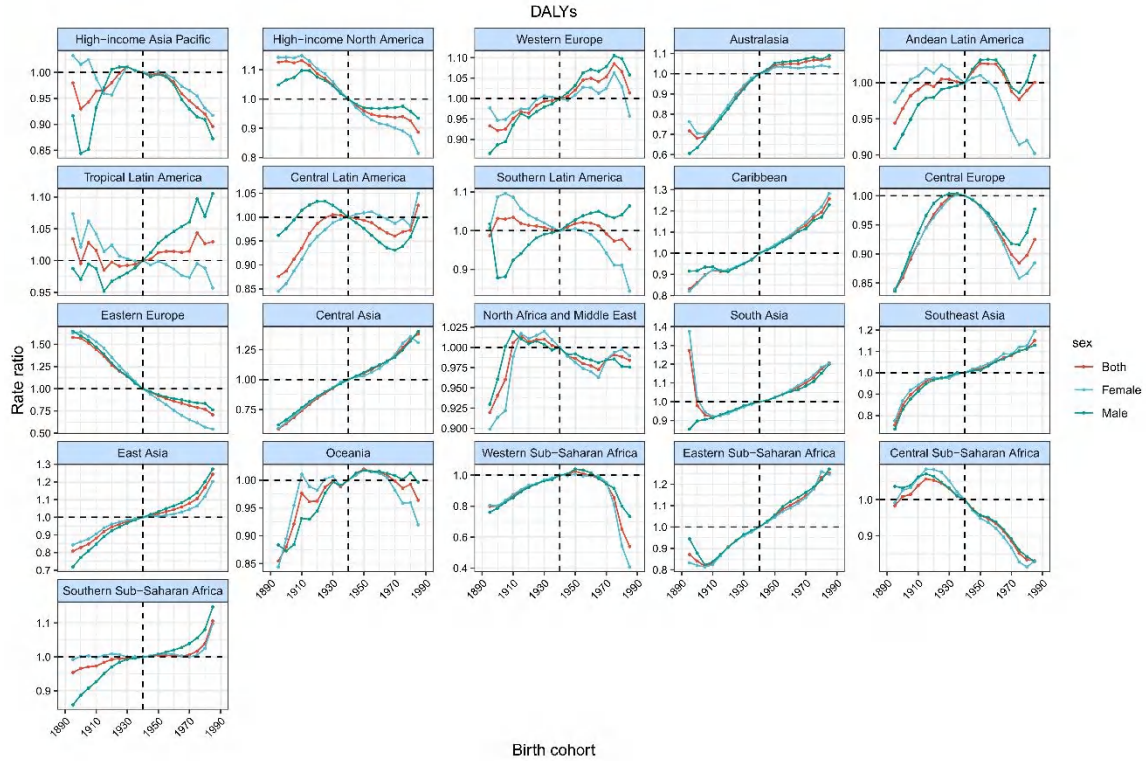
138

139 Figure S30. Period effects on atrial fibrillation and flutter DALY in low-SDI
 140 countries. Period effects are shown by the relative risk of DALY (mortality
 141 rate ratio) and computed as the ratio of age-specific rates from 1990–1994 to
 142 2015–2019 (2000–2005 as the referent period). The dots and shaded areas
 143 denote DALY rates or rate ratios and their corresponding 95% CIs.



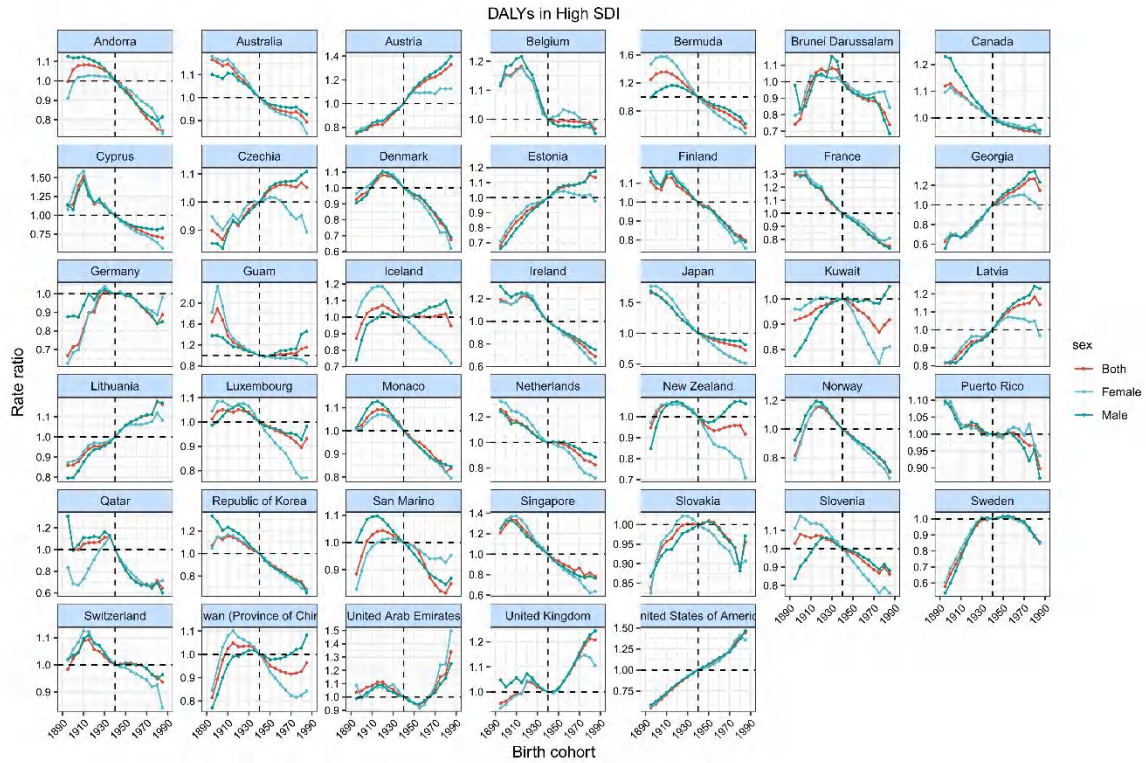
144

145 Figure S31. Cohort effects on atrial fibrillation and flutter DALY in
 146 global,1990-2019. Cohort effects are shown by the relative risk of DALY
 147 and computed as the ratio of age-specific rates from the 1895 cohort to the
 148 2010 cohort, with the referent cohort set at 1955. The dots and shaded areas
 149 denote DALY rates or rate ratios and their corresponding 95% CIs.



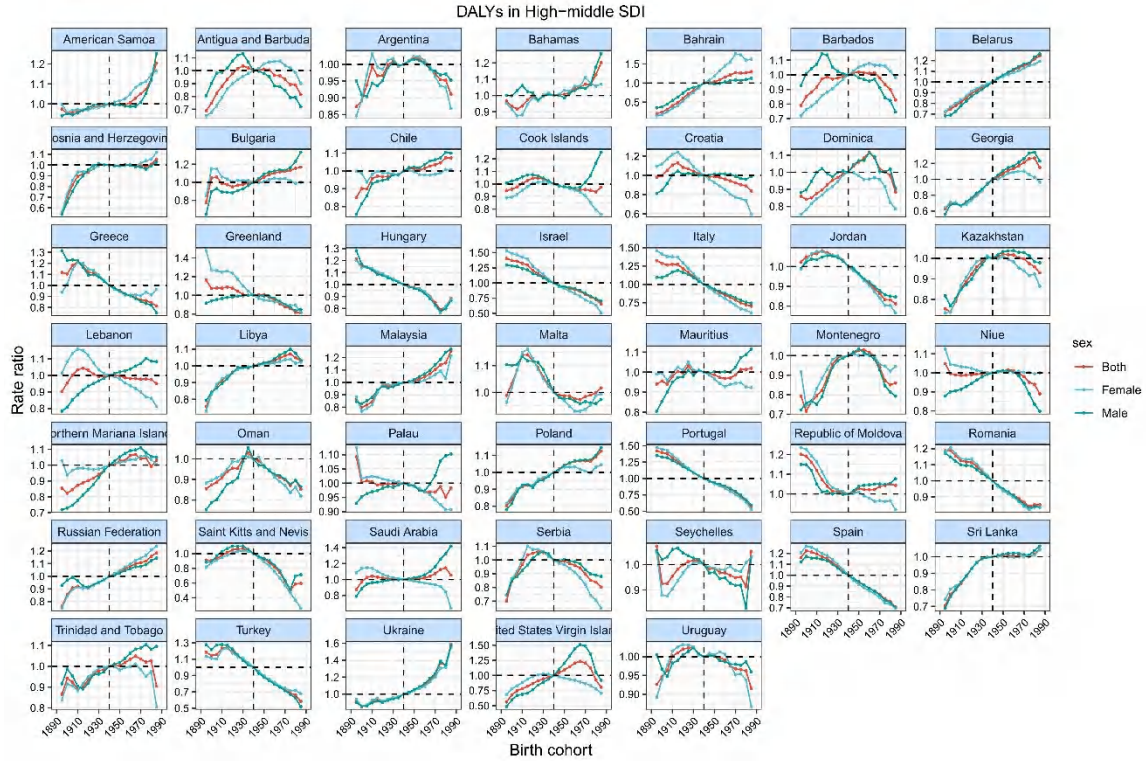
150

151 Figure S32. Cohort effects on atrial fibrillation and flutter DALY in
 152 high-SDI countries, 1990-2019. Cohort effects are shown by the relative risk
 153 of DALY and computed as the ratio of age-specific rates from the 1895
 154 cohort to the 2010 cohort, with the referent cohort set at 1955. The dots and
 155 shaded areas denote DALY rates or rate ratios and their corresponding 95%
 156 CIs.



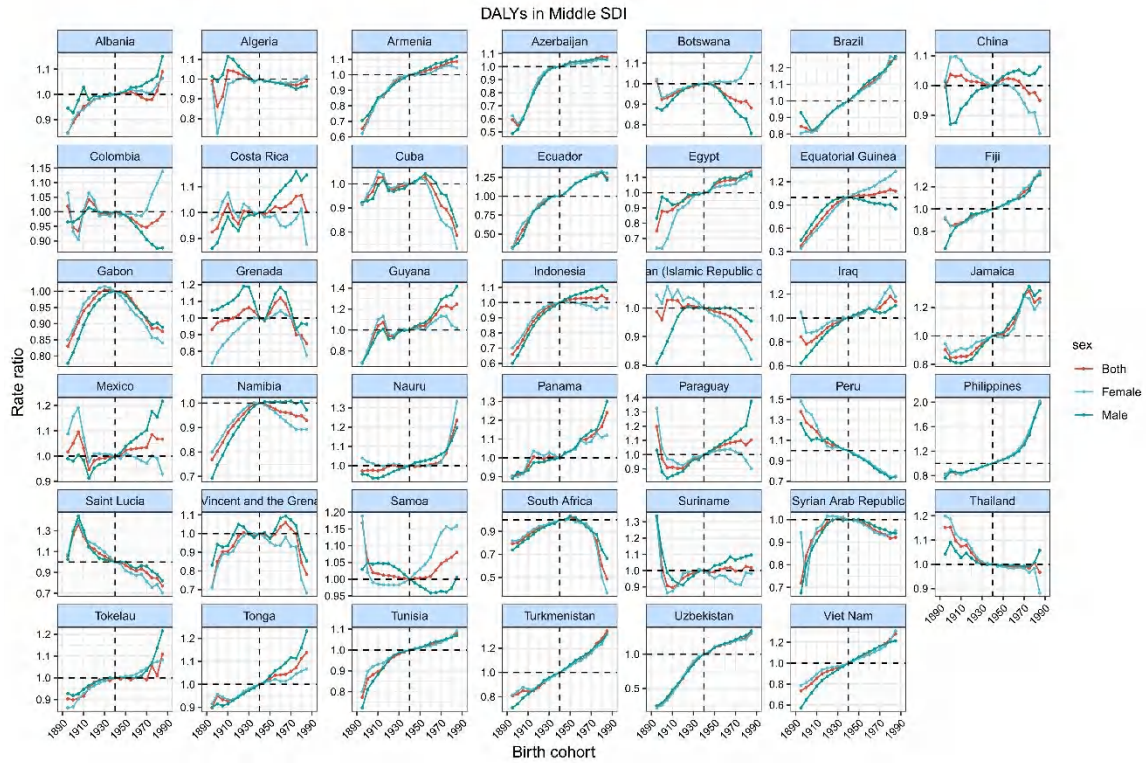
157

158 Figure S33. Cohort effects on atrial fibrillation and flutter DALY in
 159 high-middle SDI countries,1990-2019. Cohort effects are shown by the
 160 relative risk of DALY and computed as the ratio of age-specific rates from
 161 the 1895 cohort to the 2010 cohort, with the referent cohort set at 1955. The
 162 dots and shaded areas denote DALY rates or rate ratios and their
 163 corresponding 95% Cis.



164

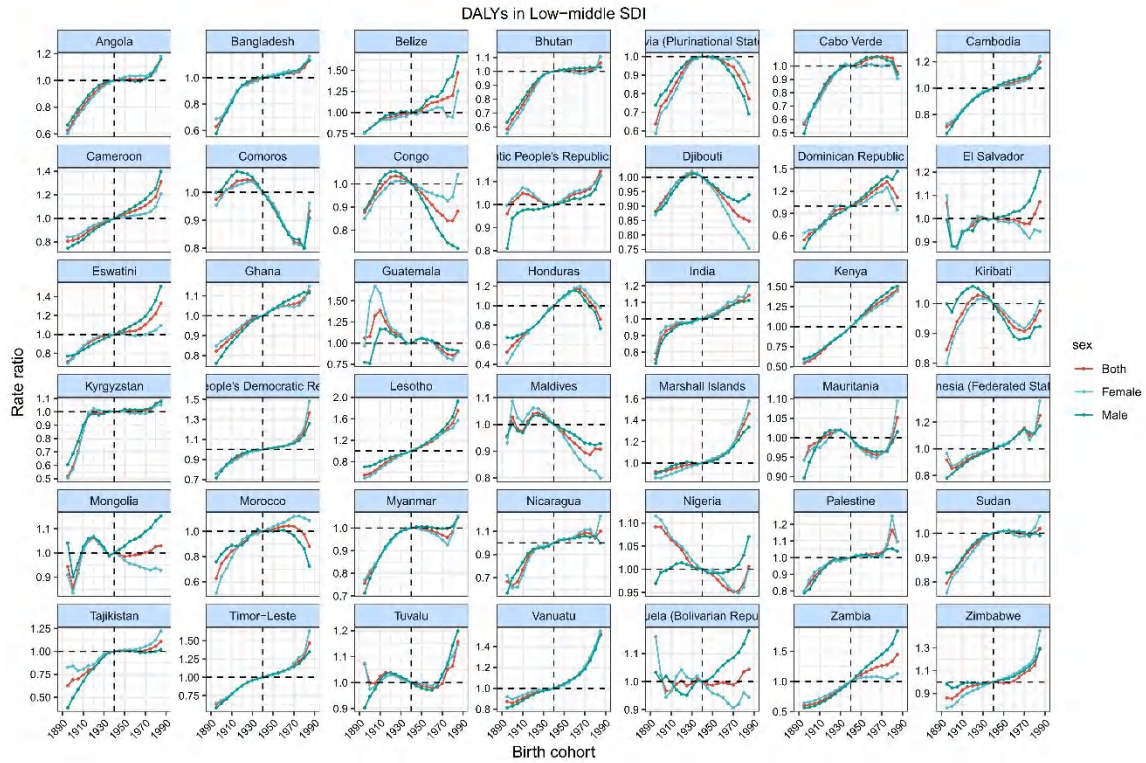
165 Figure S34. Cohort effects on atrial fibrillation and flutter DALY in
 166 middle-SDI countries, 1990-2019. Cohort effects are shown by the relative
 167 risk of DALY and computed as the ratio of age-specific rates from the 1895
 168 cohort to the 2010 cohort, with the referent cohort set at 1955. The dots and
 169 shaded areas denote DALY rates or rate ratios and their corresponding 95%
 170 CIs.



171

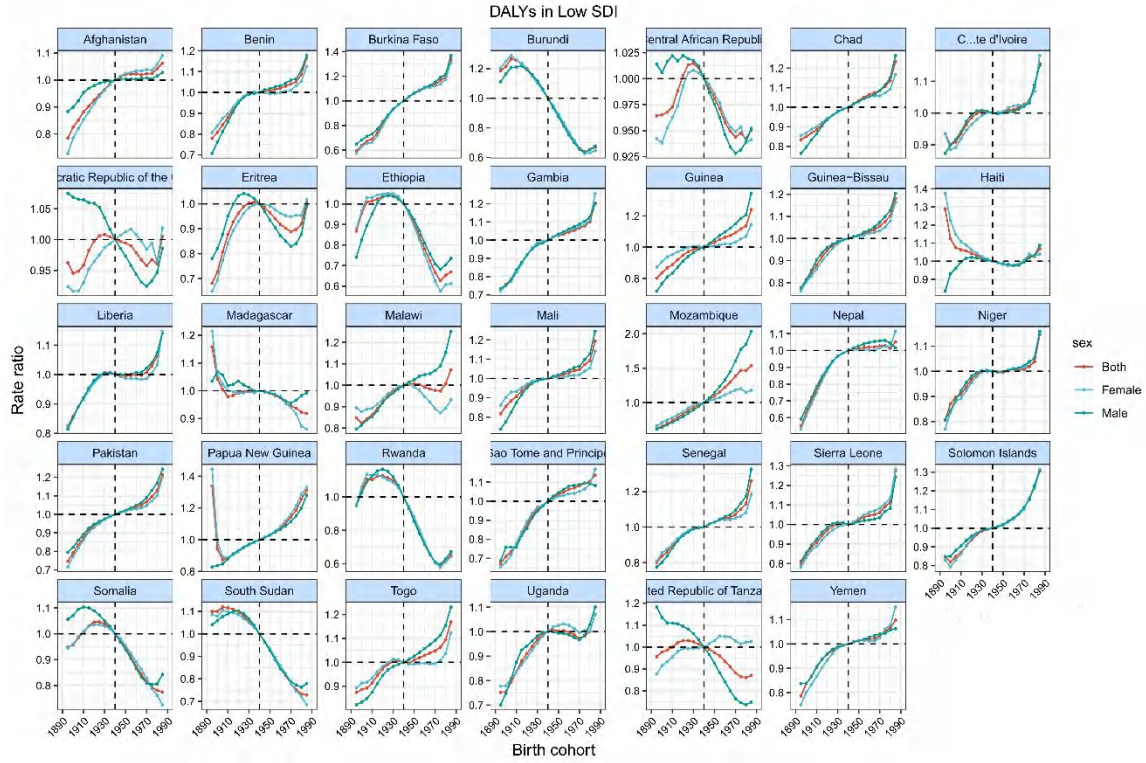
172

173 Figure S35. Cohort effects on atrial fibrillation and flutter DALY in
 174 low-middle SDI countries, 1990-2019. Cohort effects are shown by the
 175 relative risk of DALY and computed as the ratio of age-specific rates from
 176 the 1895 cohort to the 2010 cohort, with the referent cohort set at 1955. The
 177 dots and shaded areas denote DALY rates or rate ratios and their
 178 corresponding 95% CIs.



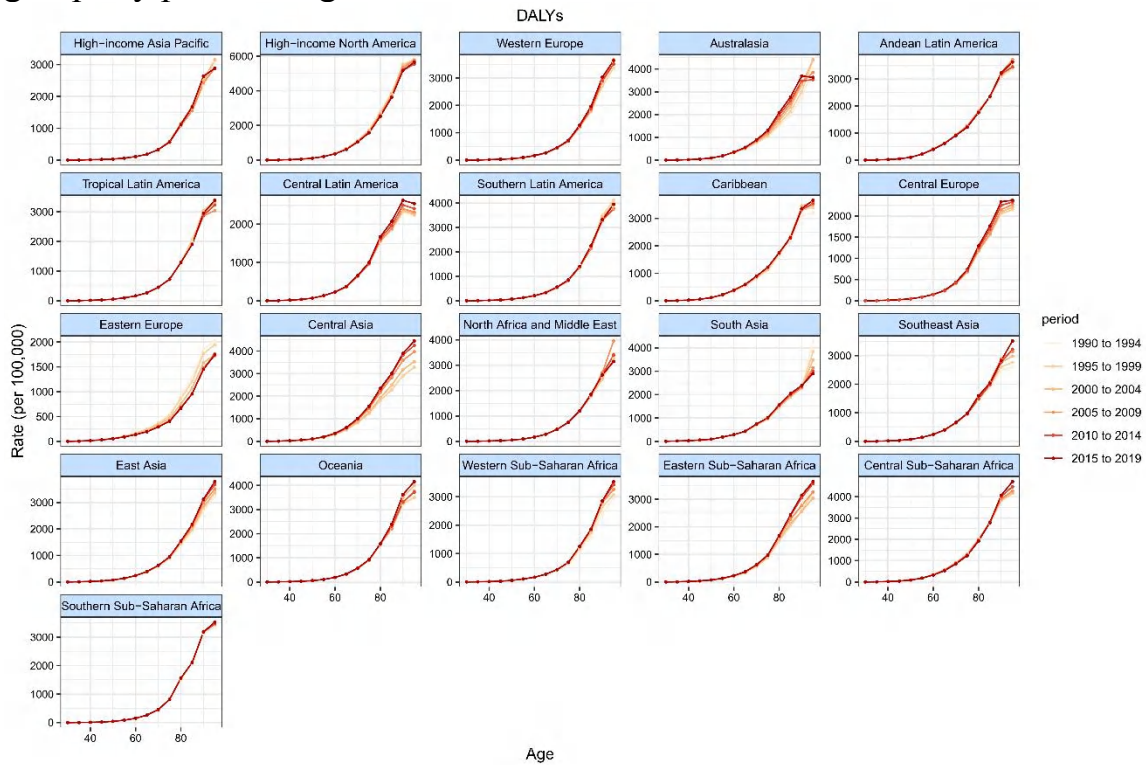
179

180 Figure S36. Cohort effects on atrial fibrillation and flutter DALY in low-SDI
 181 countries, 1990-2019. Cohort effects are shown by the relative risk of DALY
 182 and computed as the ratio of age-specific rates from the 1895 cohort to the
 183 2010 cohort, with the referent cohort set at 1955. The dots and shaded areas
 184 denote DALY rates or rate ratios and their corresponding 95% CIs.



185

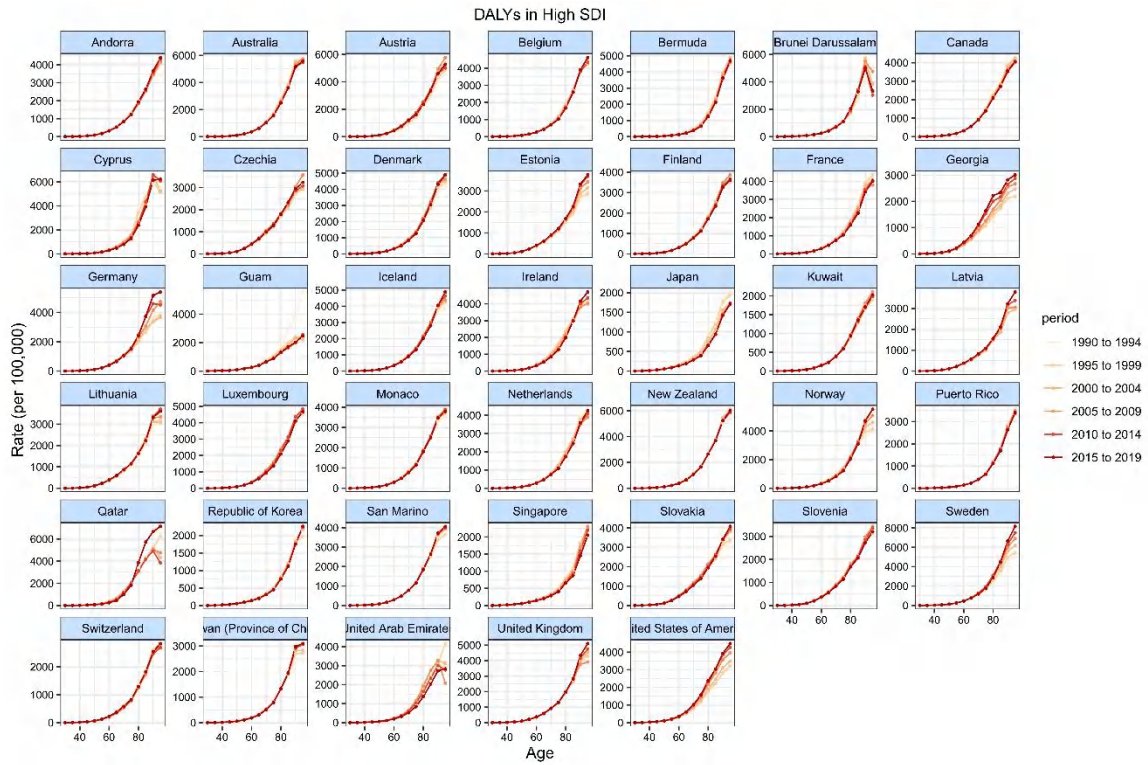
186 Figure S37. DALY rates of atrial fibrillation and flutter across different age
 187 groups by periods in global, 1990-2019.



188

189 Figure S38. DALY rates of atrial fibrillation and flutter across different age

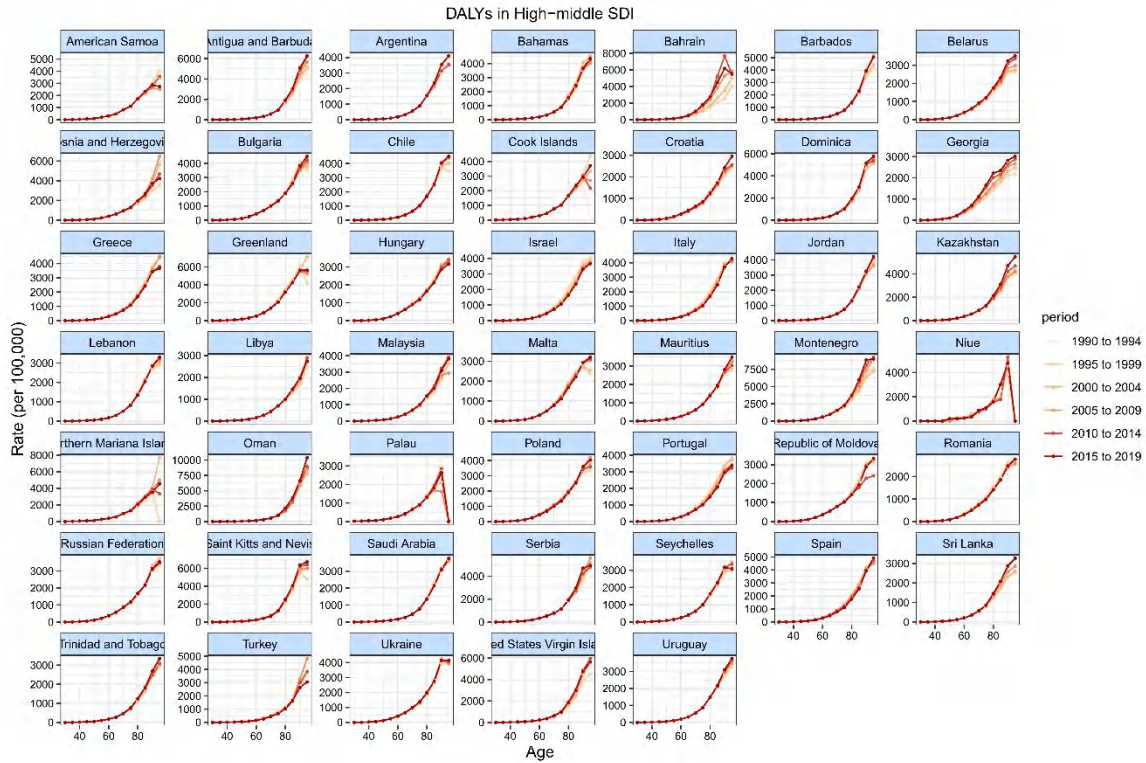
190 groups by periods in high-SDI countries, 1990-2019.



191

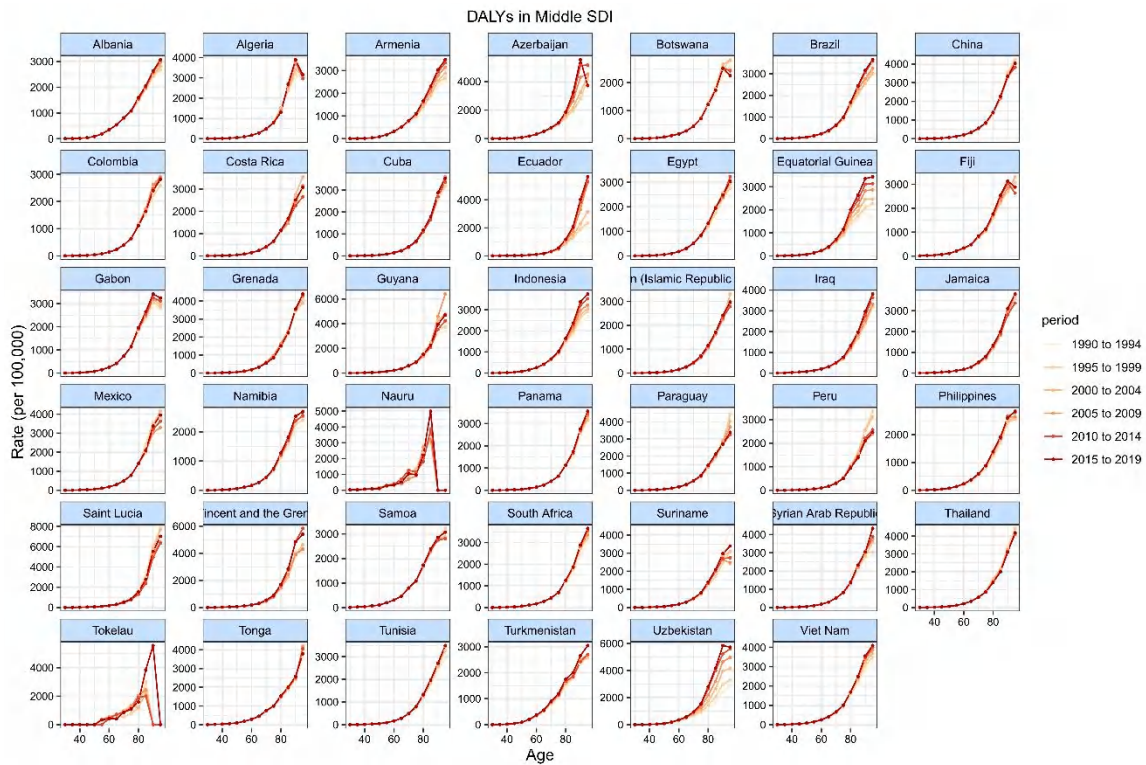
192 Figure S39. DALY rates of atrial fibrillation and flutter across different age

193 groups by periods in high-middle-SDI countries, 1990-2019.



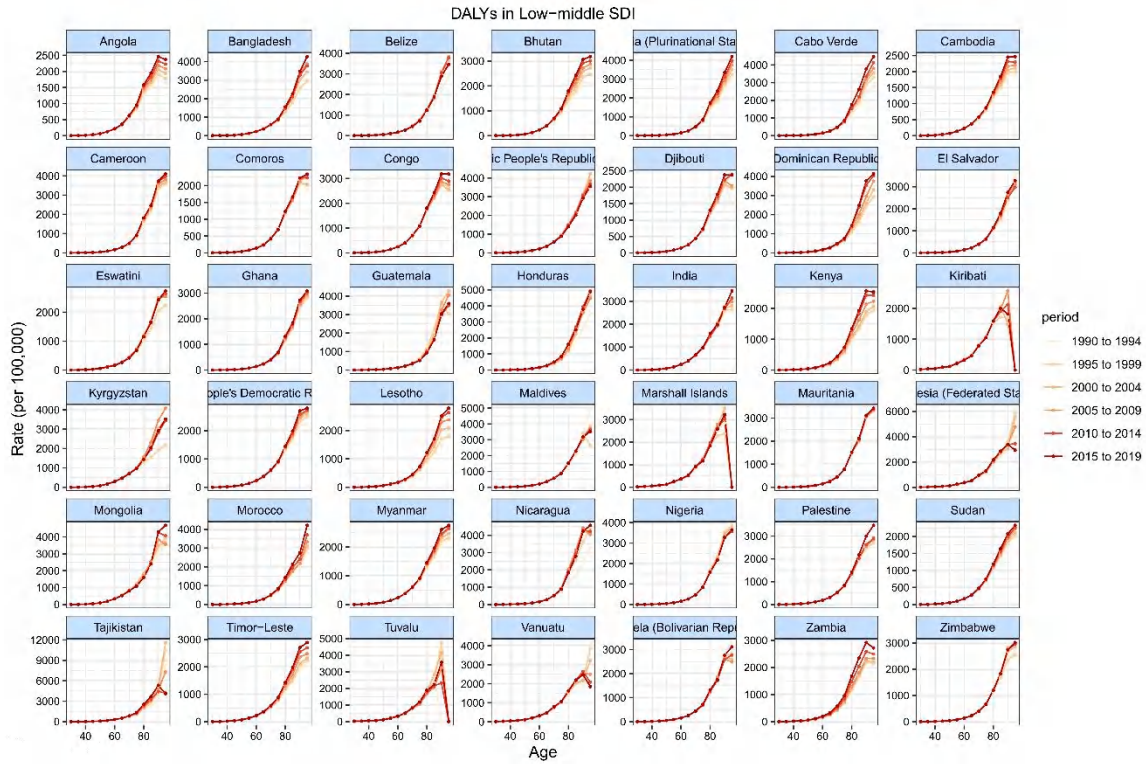
194

195 Figure S40. DALY rates of atrial fibrillation and flutter across different age
 196 groups by periods in middle-SDI countries, 1990-2019.

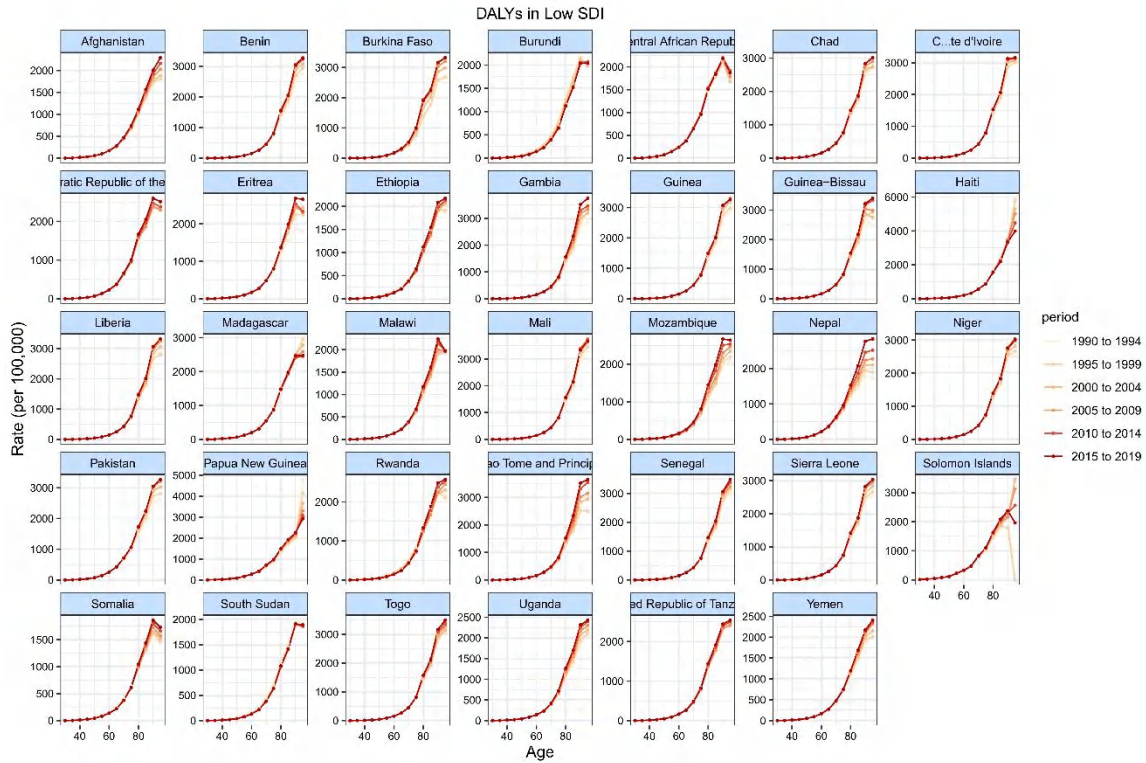


197

198 Figure S41. DALY rates of atrial fibrillation and flutter across different age
 199 groups by periods in low-middle-SDI countries, 1990-2019.

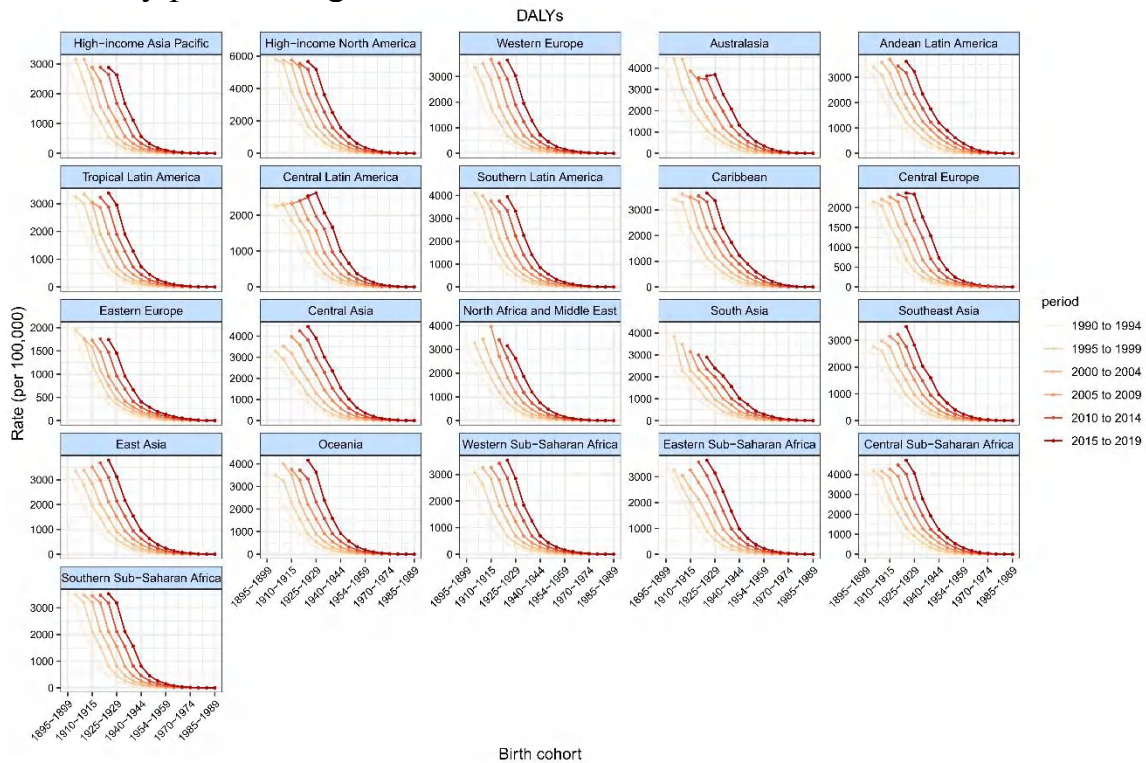


200
 201 Figure S42. DALY rates of atrial fibrillation and flutter across different age
 202 groups by periods in low-SDI countries, 1990-2019.



203

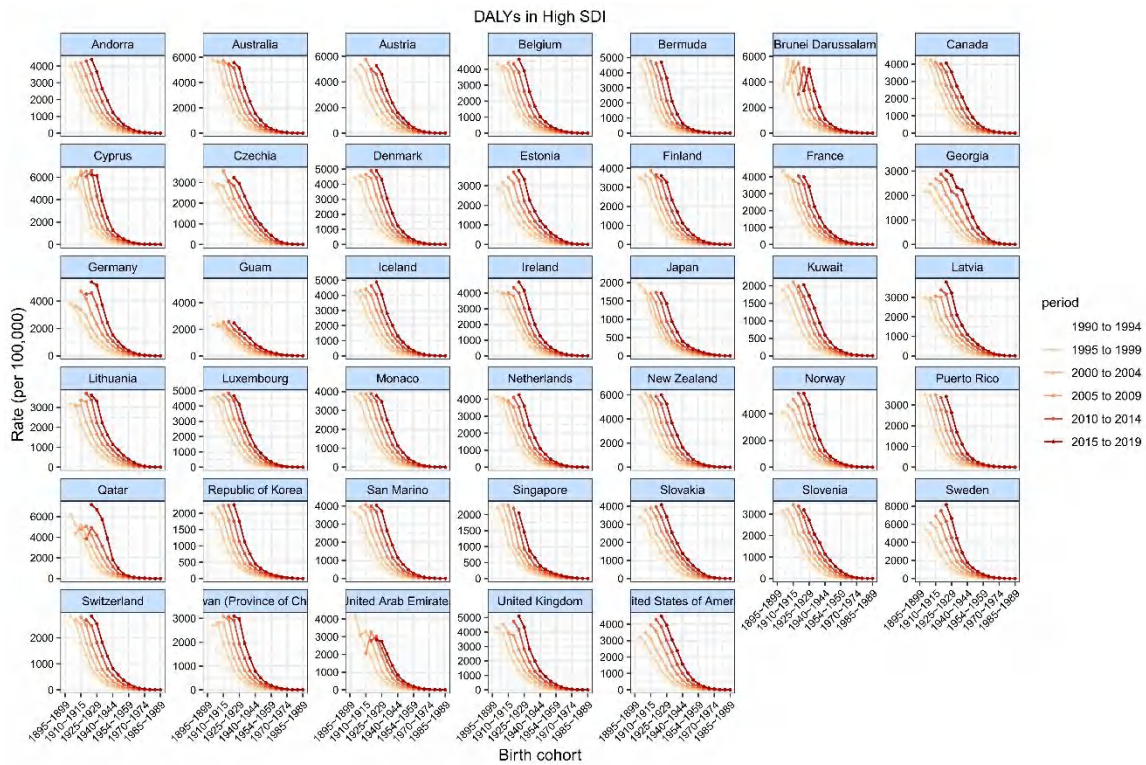
204 Figure S43. DALY rates of atrial fibrillation and flutter across different birth
 205 cohorts by periods in global, 1990-2019.



206

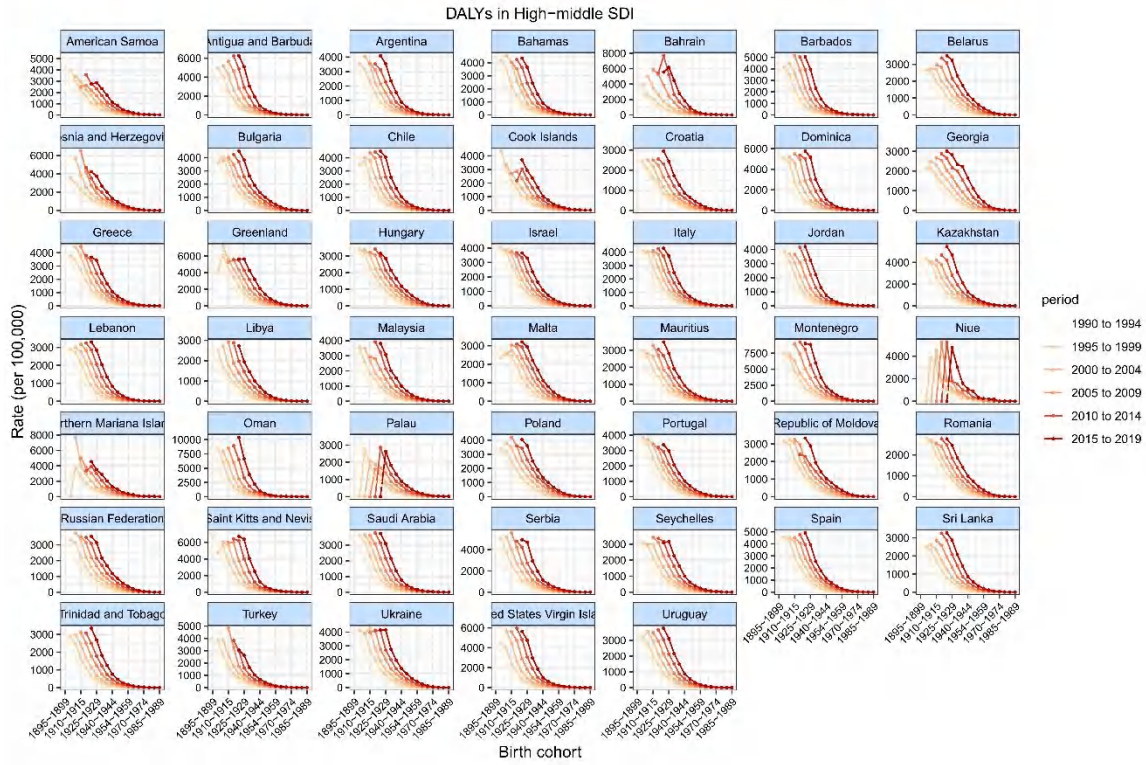
207 Figure S44. DALY rates of atrial fibrillation and flutter across different birth

208 cohorts by periods in high-SDI countries, 1990-2019.



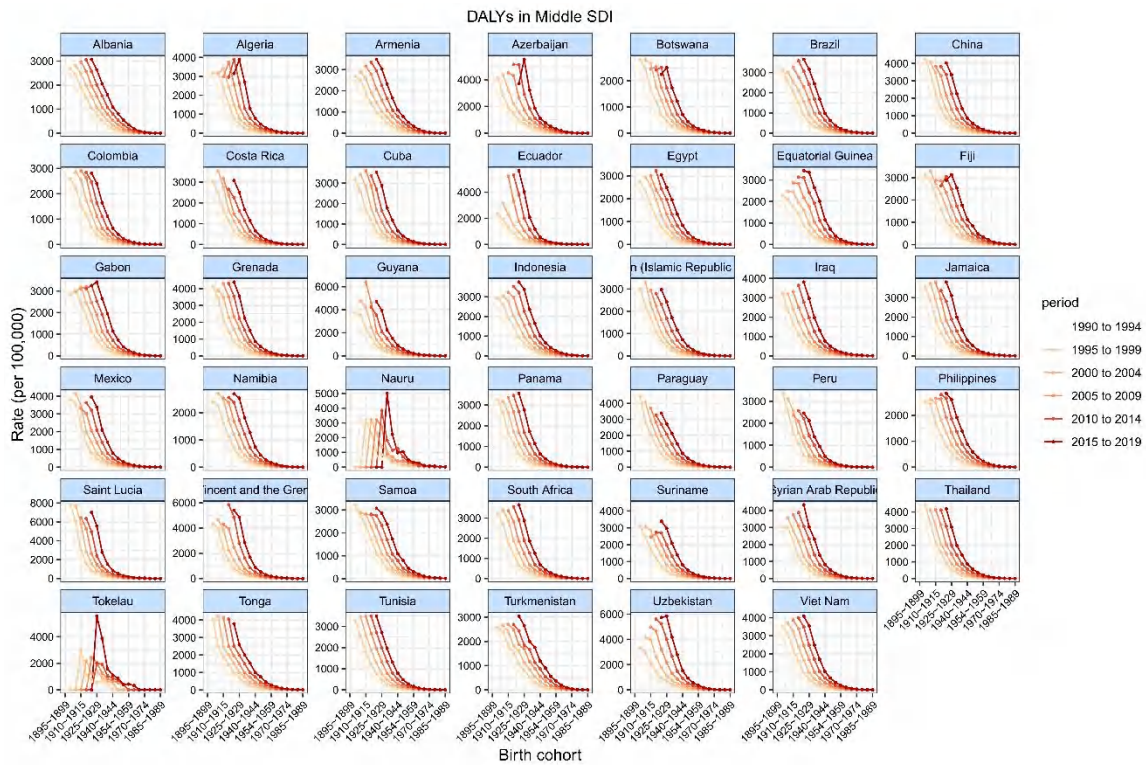
209

210 Figure S45. DALY rates of atrial fibrillation and flutter across different birth
211 cohorts by periods in high-middle-SDI countries, 1990-2019.



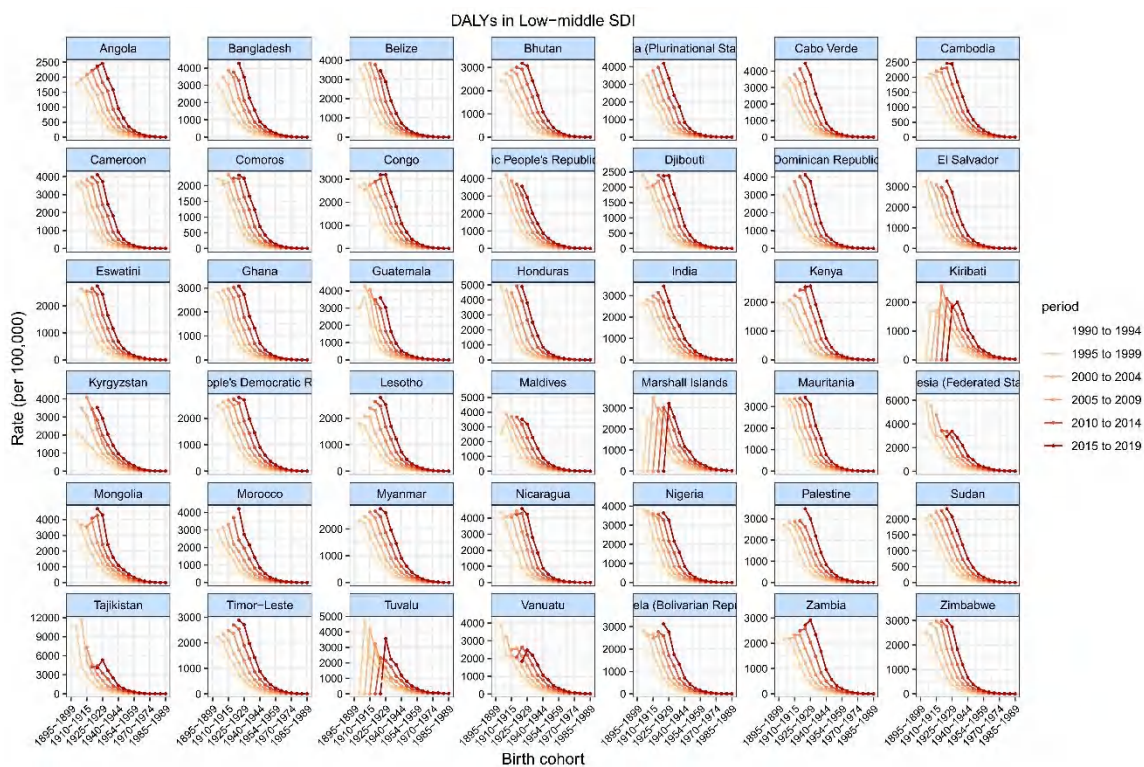
212

213 Figure S46. DALY rates of atrial fibrillation and flutter across different birth
 214 cohorts by periods in middle-SDI countries, 1990-2019.

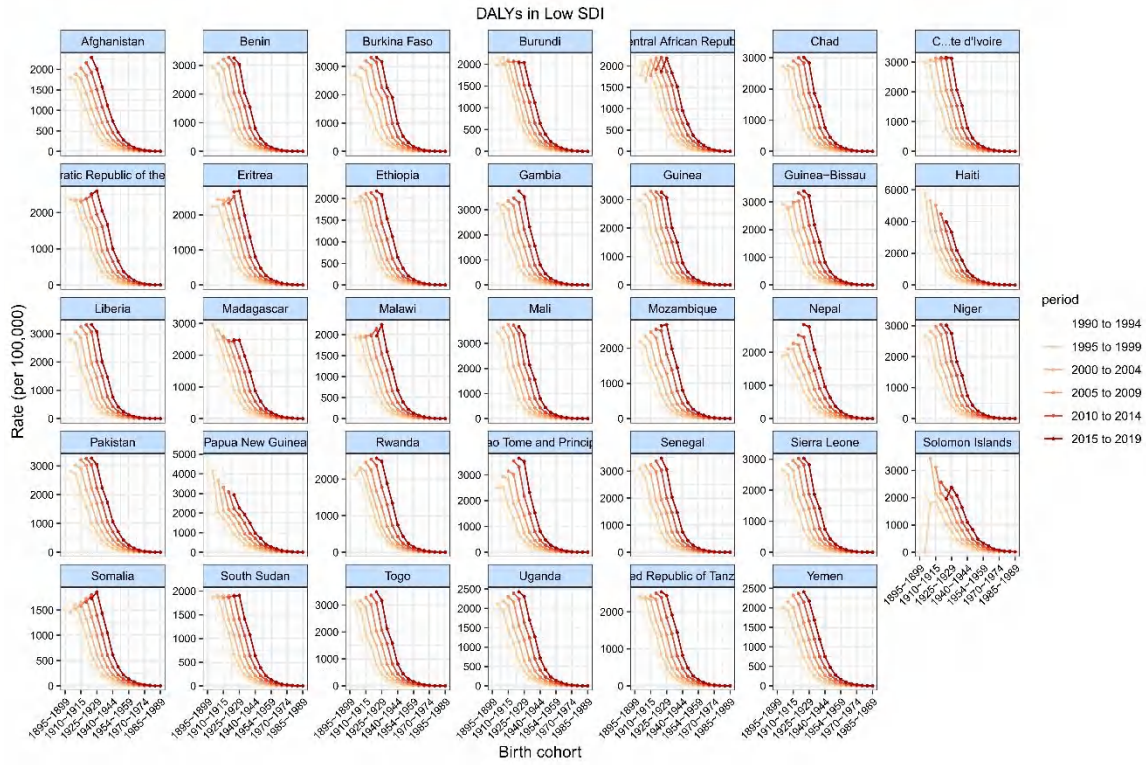


215

216 Figure S47. DALY rates of atrial fibrillation and flutter across different birth
 217 cohorts by periods in low-middle-SDI countries, 1990-2019.

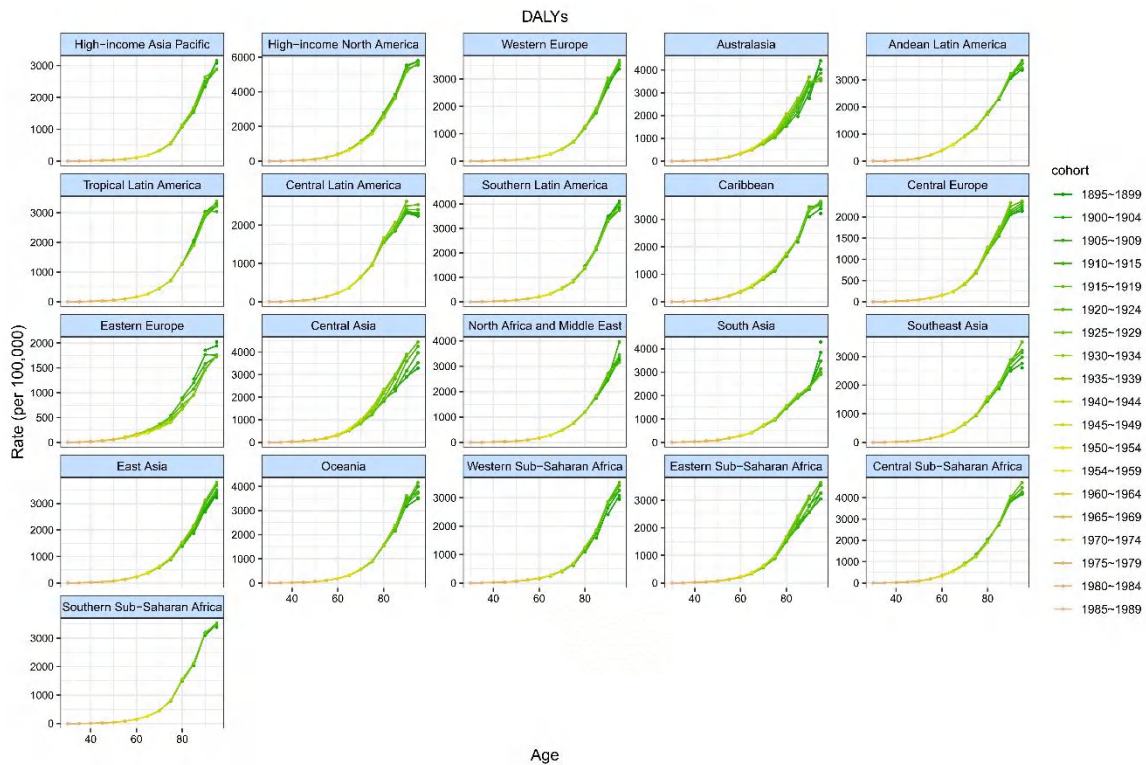


218
 219 Figure S48. DALY rates of atrial fibrillation and flutter across different birth
 220 cohorts by periods in low-SDI countries, 1990-2019.



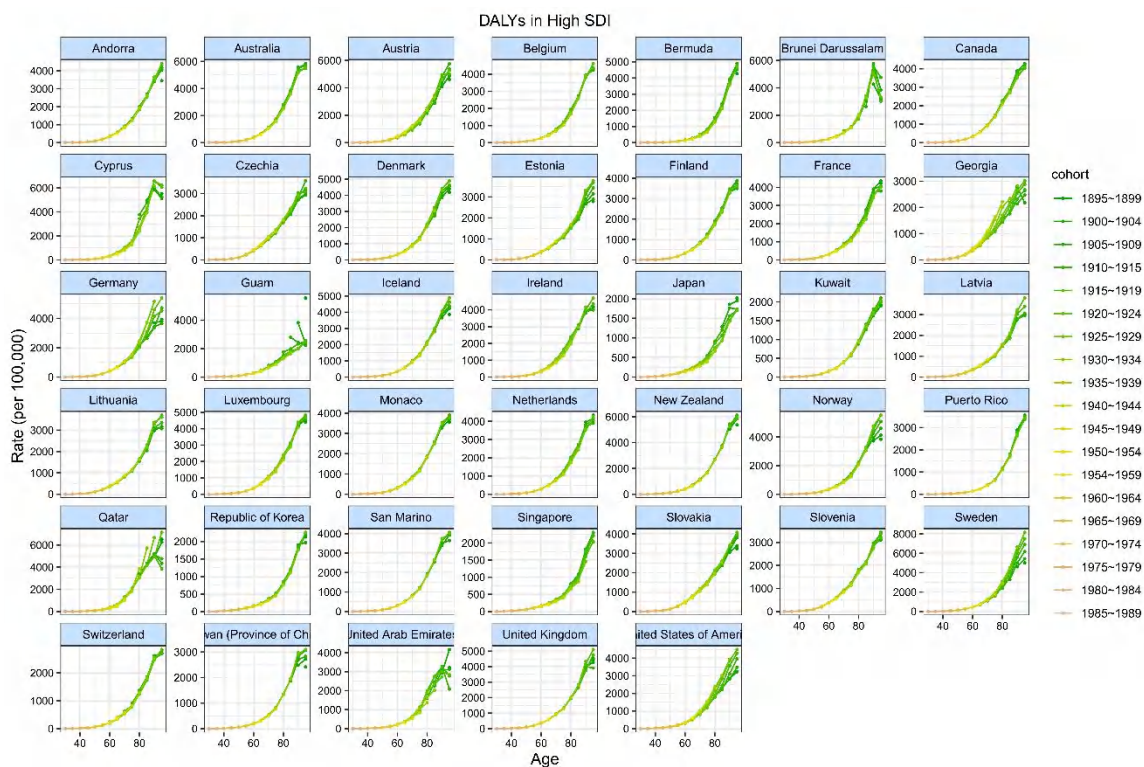
221

222 Figure S49. DALY rates of atrial fibrillation and flutter across different age
 223 groups by birth cohorts in global, 1990-2019.



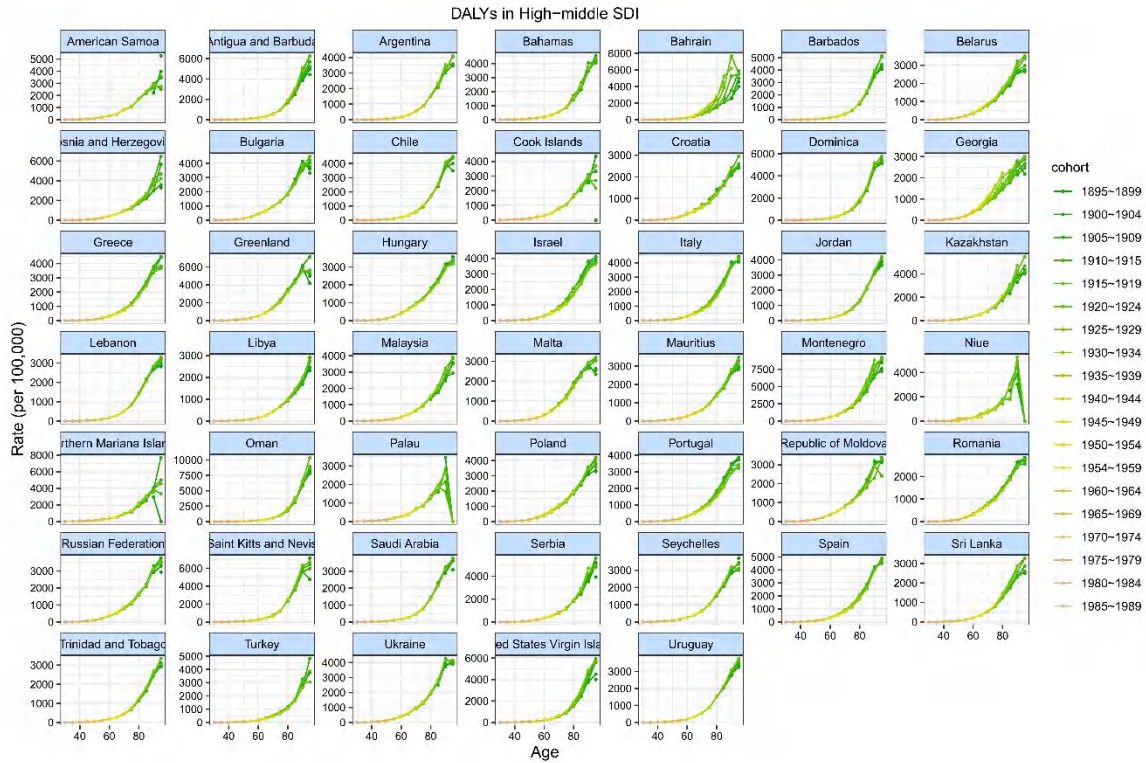
224

225 Figure S50. DALY rates of atrial fibrillation and flutter across different age
226 groups by birth cohorts in high-SDI countries, 1990-2019.



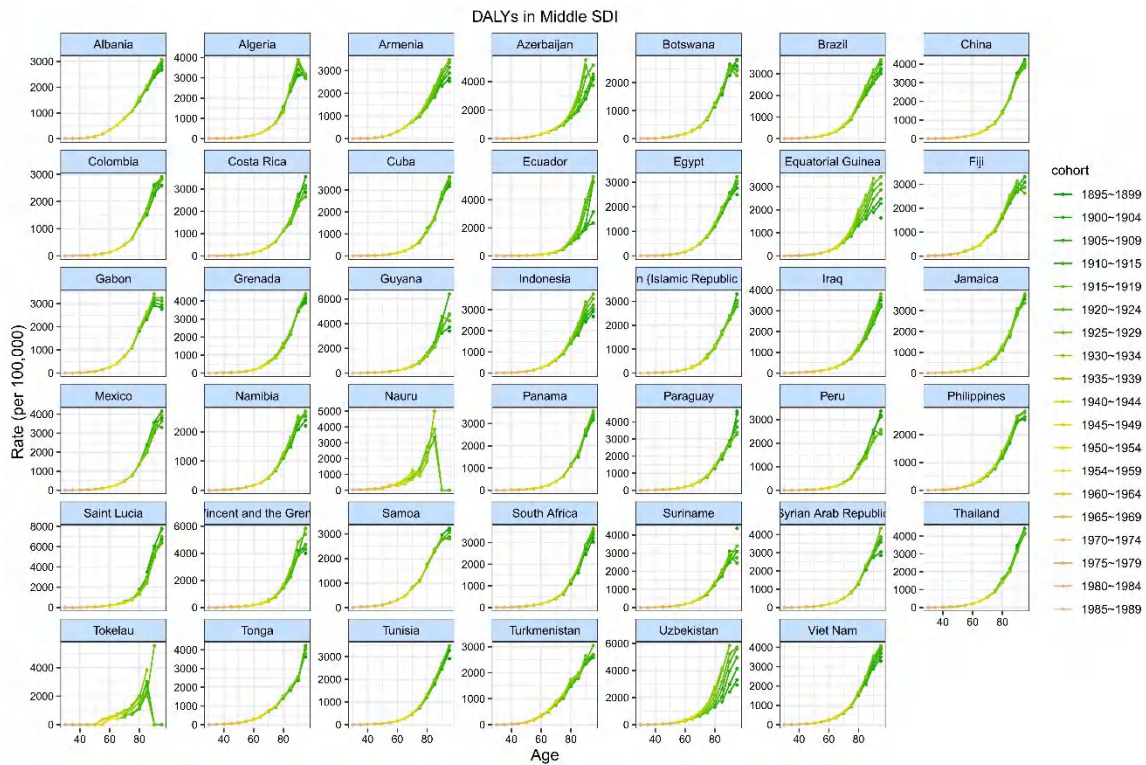
227

228 Figure S51. DALY rates of atrial fibrillation and flutter across different age
229 groups by birth cohorts in high-middle-SDI countries, 1990-2019.



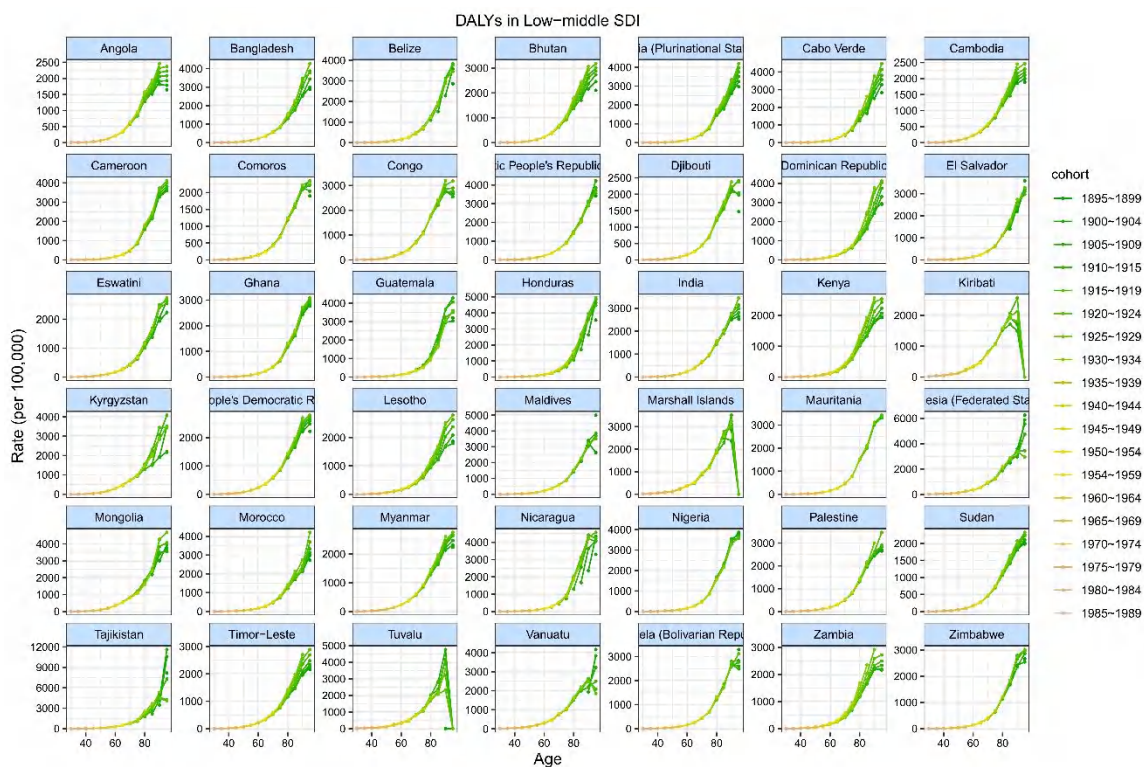
230

231 Figure S52. DALY rates of atrial fibrillation and flutter across different age
 232 groups by birth cohorts in middle-SDI countries, 1990-2019.



233

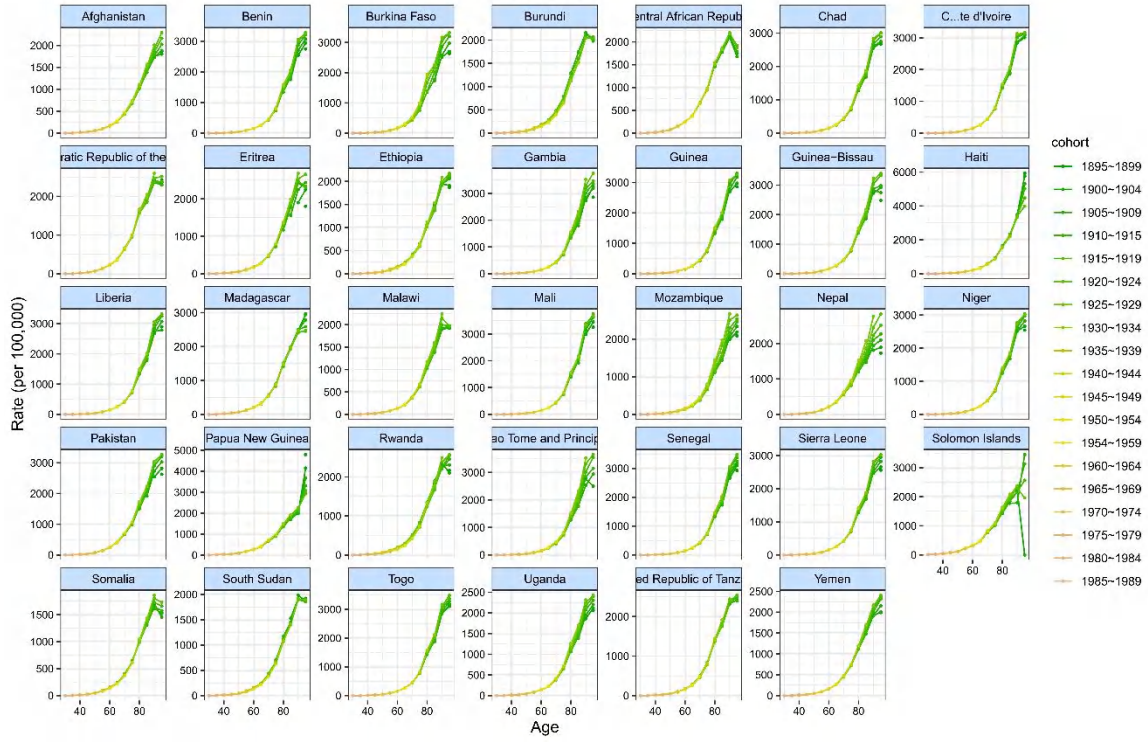
234 Figure S53. DALY rates of atrial fibrillation and flutter across different age
235 groups by birth cohorts in low-middle-SDI countries, 1990-2019.



236

237 Figure S54. DALY rates of atrial fibrillation and flutter across different age
238 groups by birth cohorts in low-SDI countries, 1990-2019.

DALYs in Low SDI



239
240
241