

Recurrent stroke risk and cerebral microbleed burden in ischemic stroke and TIA

A meta-analysis

OPEN

Duncan Wilson, MD
Andreas Charidimou, PhD
Gareth Ambler, PhD
Zoe V. Fox, PhD
Simone Gregoire, PhD
Phillip Rayson
Toshio Imaizumi, MD
Felix Fluri, MD
Hiromitsu Naka, MD
Solveig Horstmann, MD
Roland Veltkamp, MD
Peter M. Rothwell, PhD
Vincent I.H. Kwa, MD
Vincent Thijs, MD
Yong-Seok Lee, MD
Young Dae Kim, MD
Yining Huang, MD
Ka Sing Wong, MD
Hans Rolf Jäger, MD, FRCR
David J. Werring, PhD

ABSTRACT

Objective: To determine associations between cerebral microbleed (CMB) burden with recurrent ischemic stroke (IS) and intracerebral hemorrhage (ICH) risk after IS or TIA.

Methods: We identified prospective studies of patients with IS or TIA that investigated CMBs and stroke (ICH and IS) risk during ≥ 3 months follow-up. Authors provided aggregate summary-level data on stroke outcomes, with CMBs categorized according to burden (single, 2-4, and ≥ 5 CMBs) and distribution. We calculated absolute event rates and pooled risk ratios (RR) using random-effects meta-analysis.

Results: We included 5,068 patients from 15 studies. There were 115/1,284 (9.6%) recurrent IS events in patients with CMBs vs 212/3,781 (5.6%) in patients without CMBs (pooled RR 1.8 for CMBs vs no CMBs; 95% confidence interval [CI] 1.4-2.5). There were 49/1,142 (4.3%) ICH events in those with CMBs vs 17/2,912 (0.58%) in those without CMBs (pooled RR 6.3 for CMBs vs no CMBs; 95% CI 3.5-11.4). Increasing CMB burden increased the risk of IS (pooled RR [95% CI] 1.8 [1.0-3.1], 2.4 [1.3-4.4], and 2.7 [1.5-4.9] for 1 CMB, 2-4 CMBs, and ≥ 5 CMBs, respectively) and ICH (pooled RR [95% CI] 4.6 [1.9-10.7], 5.6 [2.4-13.3], and 14.1 [6.9-29.0] for 1 CMB, 2-4 CMBs, and ≥ 5 CMBs, respectively).

Conclusions: CMBs are associated with increased stroke risk after IS or TIA. With increasing CMB burden (compared to no CMBs), the risk of ICH increases more steeply than that of IS. However, IS absolute event rates remain higher than ICH absolute event rates in all CMB burden categories.

Neurology® 2016;87:1501-1510

GLOSSARY

CAA = cerebral amyloid angiopathy; **CI** = confidence interval; **CMB** = cerebral microbleed; **ICH** = intracerebral hemorrhage; **IS** = ischemic stroke; **SWI** = susceptibility-weighted imaging.

Cerebral microbleeds (CMBs) are radiologically defined small round or ovoid regions of signal loss seen on paramagnetic MRI sequences.¹ In the limited available pathologic correlation studies, CMBs mostly correspond to hemosiderin-laden macrophages close to vessels affected by small vessel disease.²⁻⁵ It is thus inferred that CMBs are a marker of direct extravasation of erythrocytes from arterioles and capillaries damaged by bleeding-prone arteriopathies. An arteriopathy associated with systemic arterial hypertension and pathologic changes in small perforating arteries of the deep gray and white matter causes CMBs in deep (basal ganglia) as well as lobar regions. In Western (Caucasian) people with intracerebral hemorrhage (ICH), CMBs in

Correspondence to
Dr. Werring:
d.werring@ucl.ac.uk

Supplemental data
at Neurology.org

From the Stroke Research Centre (D.W., A.C., S.G., P.R., D.J.W.), Department of Brain Repair and Rehabilitation, UCL Institute of Neurology and The National Hospital for Neurology and Neurosurgery; Department of Statistical Science (G.A.) and Biomedical Research Centre (Z.V.F.), UCL, London, UK; Department of Neurosurgery (T.I.), Kushiro City General Hospital, Hokkaido, Japan; Department of Neurology (F.F.), University Hospital Würzburg, Germany; Department of Neurology (H.N.), Saiseikai Kajikawa Hospital, Hiroshima, Japan; Department of Neurology (S.H.), University of Heidelberg, Germany; Department of Stroke Medicine (R.V.), Division of Brain Sciences, Imperial College London; Nuffield Department of Clinical Neurosciences (P.M.R.), John Radcliffe Hospital, University of Oxford, UK; Department of Neurology (V.I.H.K.), Onze Lieve Vrouwe Gasthuis, Amsterdam, the Netherlands; Department of Neurology (V.T.), Austin Health and Melbourne Brain Center, University of Melbourne, Australia; Department of Neurology (Y.-S.L.), Seoul National University Boramae Medical Center; Department of Neurology (Y.D.K.), Yonsei University College of Medicine, Seoul, Korea; Department of Neurology (Y.H.), Peking University First Hospital, Beijing, China; Division of Neurology (K.S.W.), Department of Medicine & Therapeutics, The Chinese University of Hong Kong, Prince of Wales Hospital, Shatin, Hong Kong; and Lysholm Department of Neuroradiology (H.R.J.), National Hospital for Neurology and Neurosurgery, London, UK.

Go to Neurology.org for full disclosures. Funding information and disclosures deemed relevant by the authors, if any, are provided at the end of the article. The Article Processing Charge was paid by Wellcome Trust.

This is an open access article distributed under the terms of the Creative Commons Attribution License 4.0 (CC BY), which permits unrestricted use, distribution, and reproduction in any medium, provided the original work is properly cited.

a strictly lobar distribution are highly specific for cerebral amyloid angiopathy (CAA), which causes progressive deposition of β -amyloid in small cortical and leptomeningeal arterial walls,⁶ though this pattern may not be so specific in Eastern (Asian) people⁷ and in those without ICH.⁸

Multiple prospective studies in ischemic stroke (IS) cohorts have shown that CMBs are associated with subsequent ICH risk.^{9,10} However, CMBs are also associated with increased subsequent IS risk.^{11–14} Indeed, suggested ischemic mechanisms for CMBs include ischemia-mediated iron store release by oligodendrocytes,¹⁵ phagocytosis of red cell microemboli into the perivascular space (termed angiophagy),¹⁶ or hemorrhagic transformation of small microinfarcts.¹⁷ Indeed, in a recent community study, after adjusting for cardiovascular risk factors, CMBs were found to be associated with lacunes and white matter volume progression.¹⁸ Few data are available on how CMB burden affects the balance of ICH and IS risk in different populations. In CAA cohorts, an increasing number of CMBs is associated with an increased risk of ICH, suggesting a relationship between CMB number and the severity of bleeding-prone arteriopathy.¹⁹ Whether an increasing number of CMBs is also associated with an increased risk of ICH in IS and TIA cohorts remains uncertain. If increasing CMB burden shifts the balance of risk toward ICH rather than IS, this could have major clinical relevance for antithrombotic risk-benefit decisions after IS and TIA. Our previous meta-analysis of 10 prospective studies including 3,067 patients with IS or TIA found that CMB presence is associated with a higher risk of ICH than IS²⁰ (the odds ratio was 8.53 for ICH and 1.55 for IS), but was not able to address the key clinical question of how the number (burden) of CMBs influences ICH and IS risk.

We therefore performed a pooled analysis of aggregate summary data, including CMB burden and distribution, to investigate the risk of subsequent IS and ICH in individuals who have had an IS or TIA. We tested the following hypotheses: (1) CMB presence is associated with an increased risk of stroke (ICH > IS); and (2) as CMB burden increases (due to a more

severe bleeding-prone arteriopathy), the risk of ICH increases more steeply than the risk of IS.

METHODS We searched Medline and Embase from 1996 (the year CMBs were first reported) through to April 2015. Our search strategy was as follows:

1. “Cerebral microbleed*” or CMB or “cerebral microh?emorr*” or “brain microbleed*” or “brain microh?emorr*”
2. Stroke or “isch?emic stroke” or TIA or “intrac* adj2 h?emorrhag*” or ICH
3. 1 and 2

We included published and unpublished studies fulfilling the following criteria: (1) performed paramagnetic-sensitive MRI sequences to detect CMBs at baseline; (2) assessed CMBs at baseline and associations with IS or ICH as primary or secondary outcomes; (3) had a prospective study design with at least 3 months of follow-up; and (4) fulfilled at least 4 of 6 predefined quality indicators. We excluded cross-sectional studies and case series. Two clinical research fellows (A.C. and D.W.) reviewed each study for eligibility.

Data extraction. We contacted all authors to provide data on study population, size, patient-year follow-up, and antithrombotic treatment. We obtained data on outcome events of symptomatic IS and ICH, with baseline CMB number categories as follows: CMB present, 1 CMB, >1 CMB, 2–4 CMBs, 5–10 CMBs, >10 CMBs, strictly deep CMBs, strictly lobar CMBs, and mixed distribution CMBs. We extracted all demographic, imaging, and follow-up outcome data from each study.

Quality assessment and reducing the risk of bias. All included studies were critically appraised against a checklist of 6 key quality indicators (table e-1 at Neurology.org), with reference to the Strengthening the Reporting of Observational Studies in Epidemiology statement and the Preferred Reporting Items for Systematic Reviews and Meta-Analyses guidelines. The quality criteria included assessment for bias, and all studies had a quality score of $\geq 4/6$.

Statistical methods. We first performed separate random effect meta-analyses to derive summary estimates of the pooled risk ratios of ICH and IS for each CMB category vs the reference category of “no CMBs.” Due to the small number of events in some studies, the categories 5–10 and >10 were combined, in line with previous studies of CMB burden and prognosis, which demonstrated their prognostic relevance for future ICH risk.¹⁹ Logistic regression was then used to estimate the increased risk (odds) of IS/ICH for each additional CMB. First, CMB categories were converted to a continuous scale by assuming that patients in the CMB groups 0, 1, 2–4, 5–10, and >10 had, on average, 0, 1, 3, 7.5, and 12.5 CMBs, respectively. Then, for each study, a logistic regression model was fitted relating the (log) odds of IS or ICH to the (estimated) number of CMBs. These (log) odds ratios were then pooled using random effects meta-analysis.

We calculated the *I*² statistic to investigate heterogeneity. Funnel plots (Begg and Mazumdar) were generated to investigate publication bias. Finally, where necessary, we undertook meta-regression of confounding covariates of biological plausibility or with differences between the studies (average follow-up, age, hypertension prevalence, demographics, antithrombotic use). All analyses were performed using STATA 12.0 (StataCorp LP, College Station, TX).

Standard protocol approvals, registrations, and patient consents. Individual studies and data transfer protocols were approved by local ethics committees. No additional ethical approval was required for this meta-analysis.

RESULTS Fifteen studies met our inclusion criteria (12 published and 3 unpublished) including 5,068 patients^{9,11–14,21–27} (figure 1). The patient and data characteristics of each study are shown in tables e-2 and e-3. Twelve of the 15 studies provided data on CMBs at the time of the initial IS/TIA fully stratified into number categories and location. Eight studies involving 3,111 patients were from predominantly Eastern (Asian) cohorts; the remainder (1,957 patients) were predominantly Western (Caucasian). Two studies included strictly TIA patients, 4 included those with TIA or IS, and 9 included strictly IS patients. The number of patients with CMBs was 1,284, giving an overall pooled prevalence of 25.3%. Median follow-up was 18 months (interquartile range 11–30). Overall, 79% of patients were prescribed antiplatelet agents; only 15% of patients were prescribed anticoagulants

(mainly from one study with a high proportion of patients on anticoagulation [87%]).²⁴ CMB presence was more prevalent, with higher burden, in the Eastern cohorts compared to Western cohorts (table e-3).

CMBs and IS risk. The total recurrent IS rate was 327/5,068 (6.5%). The IS event rate in those with CMBs was 9% (115/1,284) vs 5.6% (212/3,781) for those without CMBs; thus, CMBs are associated with an absolute risk increase of 3.4% for IS. The absolute risk increase for IS for CMBs vs no CMBs increases as the CMB burden increases (1.8% for 1 CMB, 4.8% for 2–4 CMBs, and 5.1% for ≥ 5 CMBs [table 1]).

The risk ratios for different CMB burden and distribution categories on IS are also shown in table 1. The presence of CMBs (vs no CMBs) was associated with a pooled risk ratio of recurrent IS of 1.8 (95% confidence interval [CI] 1.4–2.5) (figure 2). Funnel plots revealed no evidence of publication bias (Egger test $p = 0.4$). The presence of a single CMB (vs no

Figure 1 Preferred Reporting Items for Systematic Reviews and Meta-Analyses flow chart of study selection

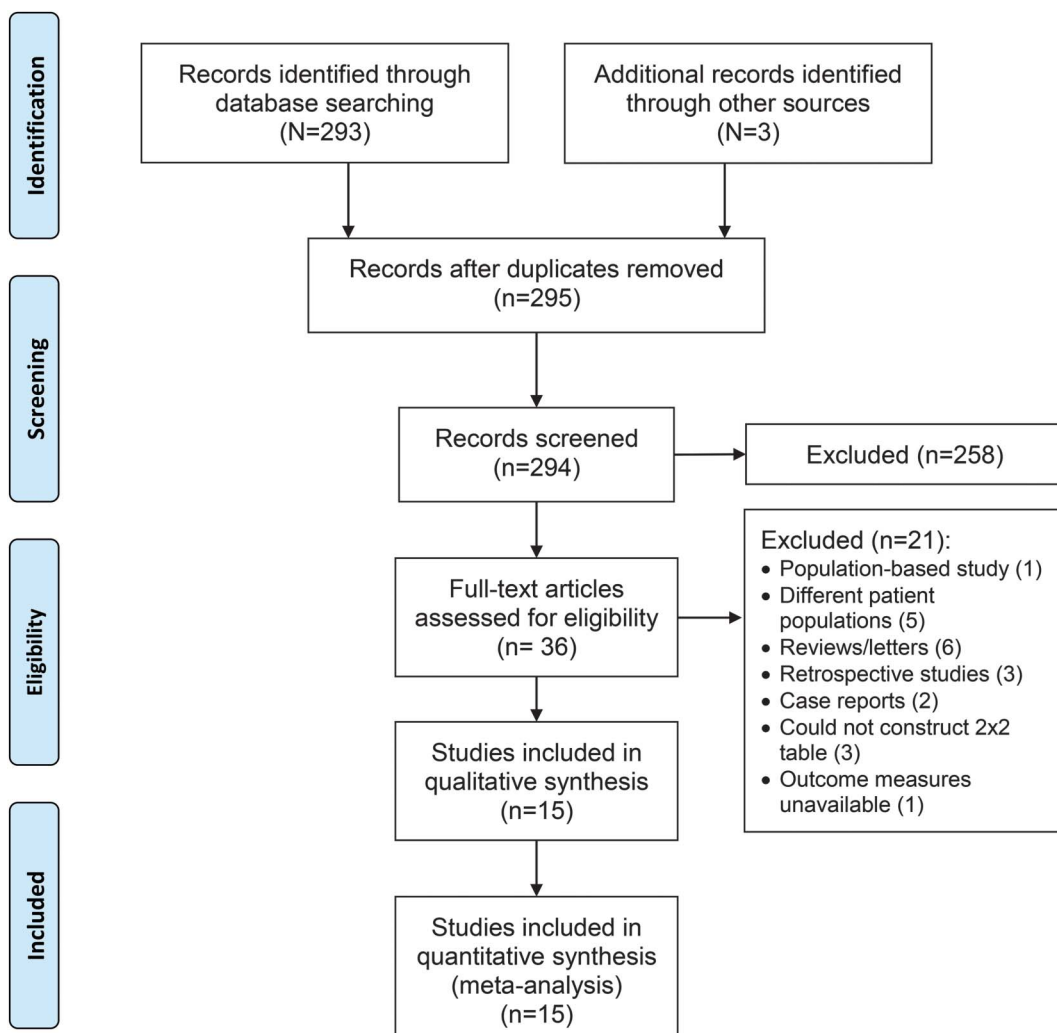


Table 1 Pooled relative risk for recurrent ischemic stroke and intracerebral hemorrhage for different cerebral microbleed (CMB) burden and distribution (all risk ratios are compared to the reference category of no CMBs)

CMB distribution, n	Ischemic stroke					Intracerebral hemorrhage				
	Pooled absolute event rates, n/N (%)	Pooled absolute risk increase, %	Pooled RR	Lower 95% CI	Upper 95% CI	Pooled absolute event rates, n/N (%)	Pooled absolute risk increase, %	Pooled RR	Lower 95% CI	Upper 95% CI
CMB presence	115/1,284 (9)	3.4	1.8	1.4	2.5	49/1,142 (4.3)	3.8	6.3	3.5	11.4
1 CMB	31/433 (7.2)	1.8	1.8	1.0	3.1	8/354 (2.3)	1.7	4.6	1.9	10.7
2–4 CMBs	44/433 (10.2)	4.8	2.4	1.3	4.4	9/383 (2.3)	1.8	5.6	2.4	13.3
≥5 CMBs	34/342 (10.5)	5.1	2.7	1.5	4.9	24/274 (8.8)	8.2	14.1	6.9	29.0
Strictly lobar	31/332 (9.3)	3.9	2.0	1.4	2.9	12/332 (3.6)	3.2	10.5	4.5	24.3
Strictly deep	29/437 (6.6)	1.2	1.6	1.0	2.7	6/437 (1.4)	1	3.3	1.3	8.5
Mixed	44/411 (10.7)	5.3	2.6	1.5	4.3	25/411 (6.1)	5.7	11.1	5.5	22.6

Abbreviations: CI = confidence interval; n = number of events in each subgroup; N = total number of patients in each subgroup; RR = risk ratio.

CMBs) had a pooled risk ratio for IS of 1.8 (95% CI 1.0–3.1). The pooled risk estimates for IS suggest an increasing trend toward higher IS risk with increasing CMB burden (table 1 and figure 3). Logistic regression was used to estimate the increase in risk for each additional CMB; this showed an odds ratio of 1.10 (95% CI 1.06–1.14) per CMB increase (figure e-1). The risk estimates for IS for each distribution category of CMBs (vs no CMBs) ranged from 1.6 (95% CI 1.0–2.7) for strictly deep CMBs to 2.6 (95% CI 1.5–4.3) for mixed CMBs, with overlapping confidence intervals for all groups. Because we noted statistical heterogeneity among the cohorts for IS risk (I^2 33%, 47%, 68%, and 51%, respectively, for CMB presence, 1 CMB, 2–4 CMB, and ≥ 5 CMB, respectively), each potential confounder (ethnicity, average follow-up, age, hypertension prevalence, and antithrombotic use) was investigated separately using meta-regression (table e-4, figure e-2). We found only weak evidence for a confounding effect of hypertension; as expected, the relative risk associated with baseline CMBs on future IS risk (effect size) is attenuated in studies with a higher prevalence of hypertension.

CMBs and ICH risk. The total ICH rate was 66/5,068 (1.3%). The ICH event rate in those with CMBs was 4.3% (49/1,142) vs 0.5% (17/2,912) for those without CMBs; thus, CMBs confer an absolute risk increase of 3.8% for ICH. The absolute risk increase for ICH for CMBs vs no CMBs increases as the CMB burden increases (1.7% for 1 CMB, 1.8% for 2–4 CMBs, and 8.2% for ≥ 5 CMBs [table 1]).

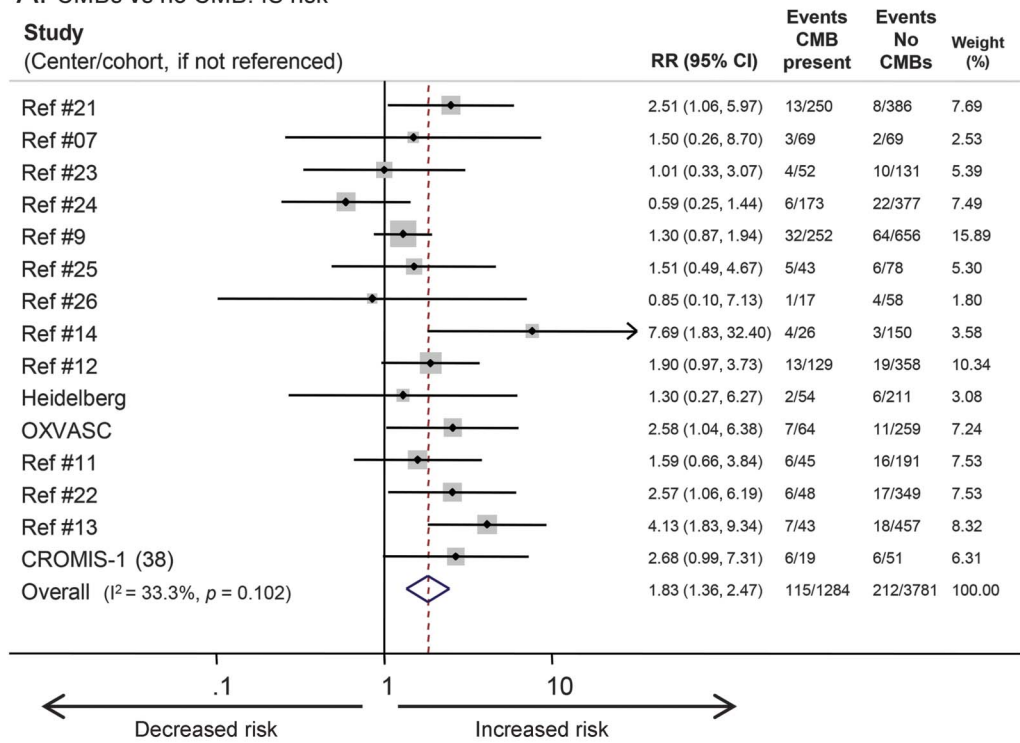
The risk ratios for different CMB burden and distribution categories on ICH are also shown in table 1. The presence of CMBs (vs no CMBs) was associated with a pooled risk ratio of 6.3 for subsequent ICH (95% CI 3.5–11.4) (figure 2). Four studies were excluded, as they did not report any ICH outcomes.

Increasing CMB burden was associated with an increased risk of ICH (pooled risk ratio 4.6 [95% CI 1.9–10.7], 5.6 [95% CI 2.4–13.3], and 14.1 [95% CI 6.9–29.0] for 1 CMB, 2–4 CMBs, and ≥ 5 CMBs compared to no CMBs, respectively) (table 1 and figure 4). Logistic regression showed an odds ratio of 1.29 (95% CI 1.21–1.37) for ICH per additional CMB (figure e-1). Of the CMB anatomical distribution categories (strictly lobar, mixed, or strictly deep), strictly lobar CMBs were associated with the highest risk of subsequent ICH vs no CMBs (pooled risk ratio 10.5 [95% CI 4.5–24.3]; table 1). There was no publication bias within studies (Egger test $p = 0.98$). Meta-regression was not undertaken because heterogeneity was not detected (I^2 was 0%) for ICH outcomes.

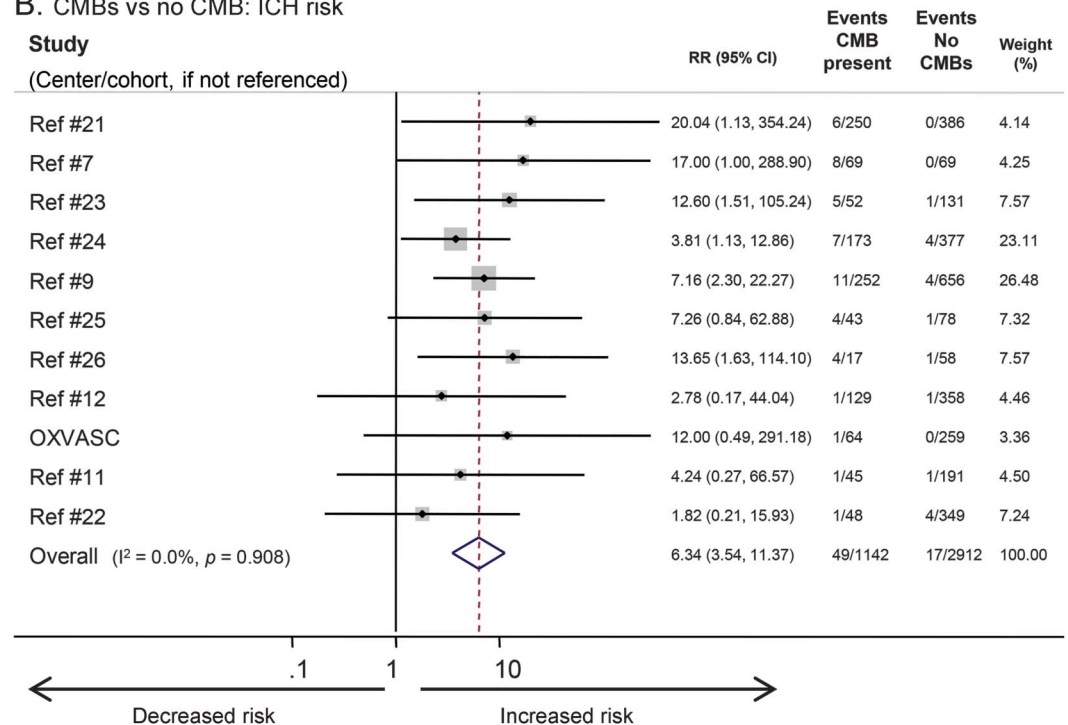
DISCUSSION Our meta-analysis of 15 prospective studies, including more than 5,000 patients presenting with IS or TIA, found that the presence of any CMBs is associated with an approximate doubling of the risk of IS, but with an approximately 6-fold increase in the risk of ICH, in keeping with 2 previous smaller meta-analyses.^{20,28} Our meta-analysis also builds on these previous studies and adds new knowledge on ICH risk: first, we were able to increase our statistical power by including more ICH outcomes²⁰; second, by pooling aggregate data, we investigated how increasing CMB burden affects the balance between future IS and ICH (including both relative and absolute risks); and third, we partially adjusted for confounding factors through meta-regression. Our most important new finding is that with increasing CMB burden, the risk of ICH increases more steeply than that of IS. In patients with ≥ 5 CMBs, the risk of ICH was substantially higher than that of IS (risk ratio for ICH 14.1 [95% CI 6.7–29.0] vs risk ratio for IS 2.73 [95% CI 1.5–4.9]). In a complementary

Figure 2 Forest plot of the risk of ischemic stroke (IS) and intracerebral hemorrhage (ICH) for presence of any cerebral microbleeds (CMBs) vs no CMBs

A. CMBs vs no CMB: IS risk



B. CMBs vs no CMB: ICH risk



NOTE: Weights are from random effects analysis

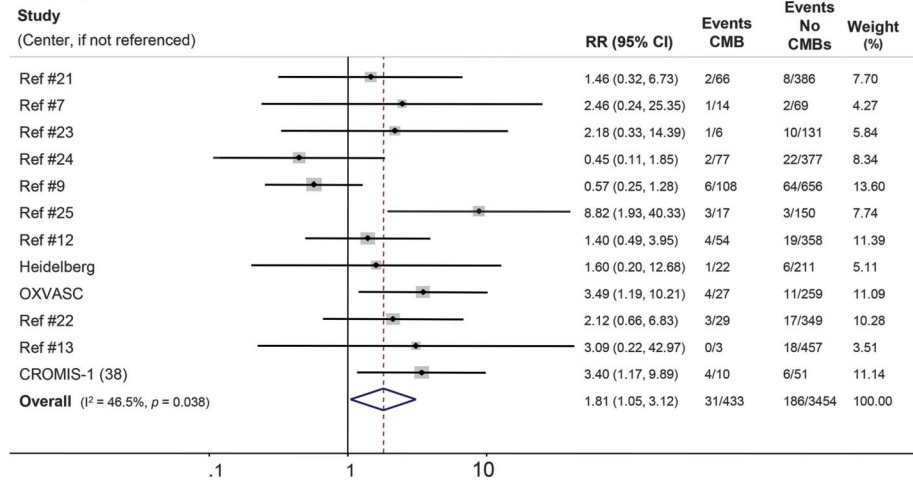
CI = confidence interval; RR = risk ratio.

logistic regression analysis, we showed that each additional CMB is associated with an increased odds of 1.3 (95% CI 1.2–1.4) for ICH and 1.1

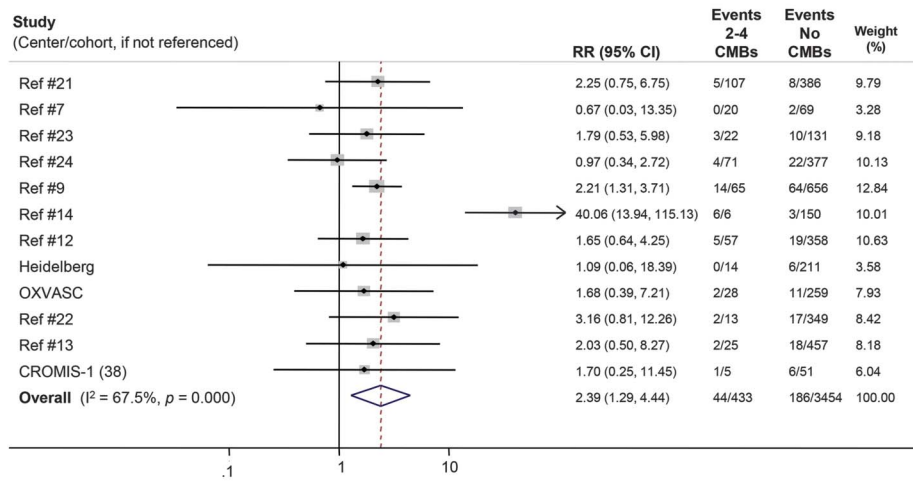
(95% CI 1.1–1.1) for IS, supporting a steeper increase in ICH than IS risk with higher CMB burden. However, the absolute event rate of

Figure 3 Forest plot of the risk of ischemic stroke (IS) for different burdens of cerebral microbleeds (CMBs) vs no CMBs

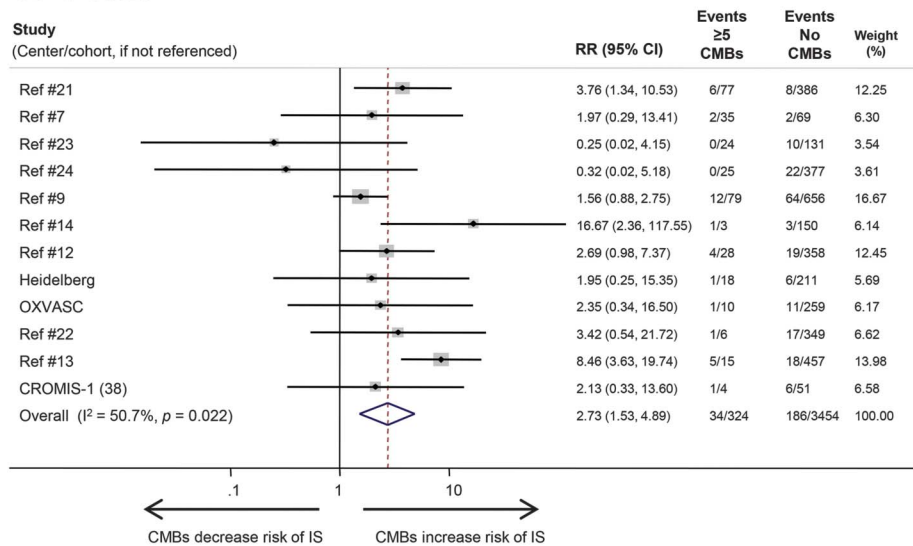
A. 1 CMB



B. 2-4 CMBs



C. ≥5 CMBs



NOTE: Weights are from random effects analysis

CI = confidence interval; RR = risk ratio.

recurrent IS was consistently higher than the absolute event rate of ICH in patients with CMBs and within all CMB categories, including those with ≥ 5 CMBs.

A large number of CMBs (e.g., ≥ 5 CMB) might help identify patients at substantially higher risk of ICH than of IS. Indeed, for clinicians, the key question is what burden of CMBs could tip the balance of risk towards ICH sufficiently to affect clinical decisions; for example, antithrombotic drug use. Antiplatelet agents only modestly reduce the absolute risk of IS in secondary prevention (0.5%–2.5%).²⁹ Our data show the absolute risk of ICH increases substantially more than the absolute risk of IS as CMB burden increases; the effect is most evident with ≥ 5 CMBs, which is associated with an 8.2% absolute risk increase for ICH vs a 5.1% absolute risk increase for IS. This raises the possibility that antiplatelet drug risk-benefit assessment may favor avoiding their use in those with numerous CMBs (e.g., ≥ 5 CMBs). This could affect a substantial proportion of IS and TIA patients; of patients with CMBs, the prevalence of those with ≥ 5 CMBs ranged from 12% to 51% in studies included in this analysis (table e-3) and varied by ethnicity (mean 17% for Western cohorts and 35% for Eastern cohorts).

A previous meta-analysis suggested that ethnicity may be an important determinant of the balance of ICH and IS risks associated with CMBs; an increased risk for ICH risk was only statistically significant in Eastern cohorts, while IS risk was only significant in Western cohorts.²⁰ In the present study, we included more patients, and using meta-regression found that ethnicity does not confound the association between CMB burden and IS or ICH risks. Thus, based on the current study, CMB burden appears to be a greater predictor of IS and ICH risk than ethnicity.

Our study has a number of strengths, including a large sample size from multiple cohorts from different countries. We only included those of high quality using systematic quality indicator assessment. We included data on CMB burden and distribution, and adjusted for confounding factors through meta-regression. Our study thus provides the best currently available evidence on how CMBs affect IS and ICH risk after IS or TIA.

Our study also has limitations. Because we included aggregate summary-level data (rather than individual patient data), we could not explore the effect of CMB distribution free from the confounding effect of CMB burden. The mixed CMB category has the highest risk of stroke, but by definition includes only patients with multiple CMBs; by contrast, the strictly lobar and strictly deep CMB categories could include patients with a single CMB. Specifically, we could not fully investigate the independent risk associated with

strictly lobar CMBs, critical to the diagnosis of CAA⁴ with high recurrent ICH risk.^{19,30} Although we undertook meta-regression, this can only partially account for confounding and is unlikely to fully account for variables such as age and hypertension. Our logistic regression assumes an average CMB count within each category (difficult to estimate in the open-ended ≥ 10 CMB category) and that the log odds of ICH/IS increase linearly with CMB burden. However, consistent findings from 2 complementary statistical analyses strongly support the hypothesis that increasing CMB burden increases the risk of ICH more than that of IS. Further limitations include the variable study sample size and follow-up, which may bias our results, especially regarding ICH, a rare outcome with wide CIs around risk estimates (which overlap for the different CMB burden categories). A time to event analysis may have been a more appropriate statistical method given the varying follow-up, but this was not possible with the data available. Imaging protocols and analysis were similar but not completely uniform (table e-2); field strength,³¹ echo time,³² and optimized paramagnetic sequences³³ can all influence CMB detection. However, most studies were performed at 1.5T with echo times within a narrow range, making this unlikely to affect our conclusions. Nevertheless, our results are only generalizable to patients scanned on 1.5T MRI using gradient recalled echo and may not be applicable to susceptibility-weighted imaging (SWI) or MRI with a higher field strength. SWI increases the number of CMBs detected^{33,34} compared to T2*-weighted images; CMB burden categories may thus have to be revised for SWI. Finally, studies used different methods for CMB rating; standardized rating instruments^{1,35,36} may improve the reliability of defining CMB categories, particularly that of a single CMB.

Although our study provides important new information, to fully determine how CMBs might influence antithrombotic decisions, the interaction between CMBs and antiplatelet agents and anticoagulants needs to be further addressed in large prospective studies. Although the prevalence of antithrombotic and anticoagulant use did not show an association with either ICH or IS outcome in our meta-regression, the large majority of patients we included were treated with antiplatelet agents. Very few patients included in our meta-analysis were on anticoagulation; more data are therefore needed on this group, who may be at highest ICH risk. Ongoing prospective observational studies addressing this question include ucl.ac.uk/cromis-2³⁷ and clinicaltrials.gov/ct2/show/NCT02238470. Further pooled analyses of

individual patient data from these and other observational studies—and, ultimately, randomized controlled trials based on CMB burden—are needed to fully assess the interaction between CMBs and antithrombotic drugs (both antiplatelet agents and anticoagulants) after IS and TIA. Nevertheless, we have shown that with increasing CMB burden, the risk of ICH increases more steeply than that of IS in a cohort of IS and TIA patients largely treated with antiplatelet medication. A high CMB burden (e.g., ≥ 5 CMBs) may identify patients at similar or greater risk of ICH than IS, with implications for antithrombotic treatment and future randomized controlled trials.

AUTHOR CONTRIBUTIONS

D.W. was involved in data acquisition and statistical analysis and drafted the manuscript. A.C. was involved in study concept, data acquisition, and revised the manuscript. G.A. was involved in statistical analysis and revised the manuscript. Z.V.F. was involved in statistical analysis and revised the manuscript. P.R. was involved in data acquisition and revised the manuscript. S.G. was involved in data acquisition and revised the manuscript. T.I. contributed data, was involved in data acquisition, and revised the manuscript. F.F. contributed data, was involved in data acquisition, and revised the manuscript. H.N. contributed data, was involved in data acquisition, and revised the manuscript. R.V. contributed data, was involved in data acquisition, and revised the manuscript. P.M.R. contributed data, was involved in data acquisition, and revised the manuscript. V.I.H.K. contributed data, was involved in data acquisition, and revised the manuscript. V.T. contributed data, was involved in data acquisition, and revised the manuscript. Y.-S.L. contributed data, was involved in data acquisition, and revised the manuscript. Y.D.K. contributed data, was involved in data acquisition, and revised the manuscript. Y.H. contributed data, was involved in data acquisition, and revised the manuscript. K.S.W. contributed data, was involved in data acquisition, and revised the manuscript. H.R.J. was involved in study concept and revised the manuscript. D.J.W. was involved in study concept, contributed data, and revised the manuscript.

STUDY FUNDING

Dr. Werring receives research support from the Stroke Association, British Heart Foundation, and the Rosetrees Trust. Dr. Wilson receives research support from the Stroke Association, British Heart Foundation. This work was undertaken at UCLH/UCL, which received a proportion of funding from the Department of Health's NIHR Biomedical Research Centres funding scheme. Dr Rothwell receives research support from the Wellcome Trust, Wolfson Foundation, UK Stroke Association, British Heart Foundation, National Institute of Health Research (NIHR), Medical Research Council, Dunhill Medical Trust, and the NIHR Biomedical Research Centre, Oxford. Dr. Rothwell is also in receipt of an NIHR Senior Investigator Award and a Wellcome Trust Senior Investigator Award. Dr. Gareth Ambler receives funding from the National Institute for Health Research University College London Hospitals Biomedical Research Centre.

DISCLOSURE

D. Wilson, A. Charidimou, G. Ambler, Z. Fox, S. Gregoire, P. Rayson, T. Imaizumi, F. Fluri, H. Naka, S. Horstmann, R. Veltkamp, P. Rothwell, and V. Kwa report no disclosures relevant to the manuscript. V. Thijs was affiliated to KU Leuven and funded by FWO Flanders and VIB Flanders when this research was performed. Y. Lee, Y. Kim, Y. Huang, K. Wong, H. Jäger, and D. Werring report no disclosures relevant to the manuscript. Go to Neurology.org for full disclosures.

Received March 9, 2016. Accepted in final form June 21, 2016.

REFERENCES

1. Greenberg SM, Vernooij MW, Cordonnier C, et al. Cerebral microbleeds: a guide to detection and interpretation. *Lancet Neurol* 2009;8:165–174.
2. Fazekas F, Kleinert R, Roob G, et al. Histopathologic analysis of foci of signal loss on gradient-echo T2*-weighted MR images in patients with spontaneous intracerebral hemorrhage: evidence of microangiopathy-related microbleeds. *AJNR Am J Neuroradiol* 1999;20:637–642.
3. Tanaka A, Ueno Y, Nakayama Y, Takano K, Takebayashi S. Small chronic hemorrhages and ischemic lesions in association with spontaneous intracerebral hematomas. *Stroke* 1999;30:1637–1642.
4. Knudsen KA, Rosand J, Karluk D, Greenberg SM. Clinical diagnosis of cerebral amyloid angiopathy: validation of the Boston criteria. *Neurology* 2001;56:537–539.
5. Shoamanesh A, Kwok CS, Benavente O. Cerebral microbleeds: histopathological correlation of neuroimaging. *Cerebrovasc Dis* 2011;32:528–534.
6. Charidimou A, Krishnan A, Werring DJ, Rolf Jager H. Cerebral microbleeds: a guide to detection and clinical relevance in different disease settings. *Neuroradiology* 2013;55:655–674.
7. Imaizumi T, Inamura S, Kohama I, Yoshifuji K, Nomura T, Komatsu K. Nascent lobar microbleeds and stroke recurrences. *J Stroke Cerebrovasc Dis* 2014;23:610–617.
8. Martinez-Ramirez S, Romero JR, Shoamanesh A, et al. Diagnostic value of lobar microbleeds in individuals without intracerebral hemorrhage. *Alzheimer's Dement* 2015;11:1480–1488.
9. Soo YO, Yang SR, Lam WW, et al. Risk vs benefit of anti-thrombotic therapy in ischaemic stroke patients with cerebral microbleeds. *J Neurol* 2008;255:1679–1686.
10. Lovelock CE, Cordonnier C, Naka H, et al. Antithrombotic drug use, cerebral microbleeds, and intracerebral hemorrhage: a systematic review of published and unpublished studies. *Stroke* 2010;41:1222–1228.
11. Boulanger JM, Coutts SB, Eliasziw M, et al. Cerebral microhemorrhages predict new disabling or fatal strokes in patients with acute ischemic stroke or transient ischemic attack. *Stroke* 2006;37:911–914.
12. Thijs V, Lemmens R, Schoofs C, et al. Microbleeds and the risk of recurrent stroke. *Stroke* 2010;41:2005–2009.
13. Lim JS, Hong KS, Kim GM, et al. Cerebral microbleeds and early recurrent stroke after transient ischemic attack: results from the Korean Transient Ischemic Attack Expression Registry. *JAMA Neurol* 2015;72:301–308.
14. Fluri F, Jax F, Amort M, et al. Significance of microbleeds in patients with transient ischaemic attack. *Eur J Neurol* 2012;19:522–524.
15. Janaway BM, Simpson JE, Hoggard N, et al. Brain haemosiderin in older people: pathological evidence for an ischaemic origin of magnetic resonance imaging (MRI) microbleeds. *Neuropathol Appl Neurobiol* 2014;40:258–269.
16. Grutzendler J, Murikinati S, Hiner B, et al. Angiopathy prevents early embolus washout but recanalizes microvessels through embolus extravasation. *Sci Transl Med* 2014;6:226ra231.
17. Tanskanen M, Makela M, Myllykangas L, Rastas S, Sulkava R, Paetau A. Intracerebral hemorrhage in the oldest old: a population-based study (VANTAA 85+). *Front Neurol* 2012;3:103.

18. Akoudad S, Ikram MA, Koudstaal PJ, et al. Cerebral microbleeds are associated with the progression of ischemic vascular lesions. *Cerebrovasc Dis* 2014;37:382–388.
19. Greenberg SM, Eng JA, Ning M, Smith EE, Rosand J. Hemorrhage burden predicts recurrent intracerebral hemorrhage after lobar hemorrhage. *Stroke* 2004;35:1415–1420.
20. Charidimou A, Kakar P, Fox Z, Werring DJ. Cerebral microbleeds and recurrent stroke risk: systematic review and meta-analysis of prospective ischemic stroke and transient ischemic attack cohorts. *Stroke* 2013;44:995–1001.
21. Huang Y, Cheng Y, Wu J, et al. Cilostazol as an alternative to aspirin after ischaemic stroke: a randomised, double-blind, pilot study. *Lancet Neurol* 2008;7:494–499.
22. Kwa VI, Algra A, Brundel M, Bouvy W, Kappelle LJ, Group MS. Microbleeds as a predictor of intracerebral haemorrhage and ischaemic stroke after a TIA or minor ischaemic stroke: a cohort study. *BMJ Open* 2013;3:e002575.
23. Naka H, Nomura E, Takahashi T, et al. Combinations of the presence or absence of cerebral microbleeds and advanced white matter hyperintensity as predictors of subsequent stroke types. *AJNR Am J Neuroradiol* 2006;27:830–835.
24. Song TJ, Kim J, Lee HS, et al. The frequency of cerebral microbleeds increases with CHADS(2) scores in stroke patients with non-valvular atrial fibrillation. *Eur J Neurol* 2013;20:502–508.
25. Fan YH, Zhang L, Lam WW, Mok VC, Wong KS. Cerebral microbleeds as a risk factor for subsequent intracerebral hemorrhages among patients with acute ischemic stroke. *Stroke* 2003;34:2459–2462.
26. Mok VC, Lau AY, Wong A, et al. Long-term prognosis of Chinese patients with a lacunar infarct associated with small vessel disease: a five-year longitudinal study. *Int J Stroke* 2009;4:81–88.
27. Imaizumi T, Horita Y, Hashimoto Y, Niwa J. Dotlike hemosiderin spots on T2*-weighted magnetic resonance imaging as a predictor of stroke recurrence: a prospective study. *J Neurosurg* 2004;101:915–920.
28. Wang DN, Hou XW, Yang BW, Lin Y, Shi JP, Wang N. Quantity of cerebral microbleeds, antiplatelet therapy, and intracerebral hemorrhage outcomes: a systematic review and meta-analysis. *J Stroke Cerebrovasc Dis* 2015;24:2728–2737.
29. Antithrombotic Trialists C. Collaborative meta-analysis of randomised trials of antiplatelet therapy for prevention of death, myocardial infarction, and stroke in high risk patients. *BMJ* 2002;324:71–86.
30. Akoudad S, Portegies ML, Koudstaal PJ, et al. Cerebral microbleeds are associated with an increased risk of stroke: the Rotterdam study. *Circulation* 2015;132:509–516.
31. Stehling C, Wersching H, Kloska SP, et al. Detection of asymptomatic cerebral microbleeds: a comparative study at 1.5 and 3.0 T. *Acad Radiol* 2008;15:895–900.
32. Gregoire SM, Werring DJ, Chaudhary UJ, et al. Choice of echo time on GRE T2*-weighted MRI influences the classification of brain microbleeds. *Clin Radiol* 2010;65:391–394.
33. Cheng AL, Batool S, McCreary CR, et al. Susceptibility-weighted imaging is more reliable than T2*-weighted gradient-recalled echo MRI for detecting microbleeds. *Stroke* 2013;44:2782–2786.
34. Shams S, Martola J, Cavallin L, et al. SWI or T2*: which MRI sequence to use in the detection of cerebral microbleeds? The Karolinska Imaging Dementia Study. *AJNR Am J Neuroradiol* 2015;36:1089–1095.
35. Cordonnier C, Al-Shahi Salman R, Wardlaw J. Spontaneous brain microbleeds: systematic review, subgroup analyses and standards for study design and reporting. *Brain* 2007;130:1988–2003.
36. Gregoire SM, Chaudhary UJ, Brown MM, et al. The Microbleed Anatomical Rating Scale (MARS): reliability of a tool to map brain microbleeds. *Neurology* 2009;73:1759–1766.
37. Charidimou A, Wilson D, Shakeshaft C, et al. The Clinical Relevance of Microbleeds in Stroke study (CROMIS-2): rationale, design, and methods. *Int J Stroke* 2015;10(Suppl A100):155–161.

Neurology.org Offers Important Information to Patients and Their Families

The *Neurology*[®] Patient Page provides:

- A critical review of ground-breaking discoveries in neurologic research that are written especially for patients and their families
- Up-to-date patient information about many neurologic diseases
- Links to additional information resources for neurologic patients

All *Neurology* Patient Page articles can be easily downloaded and printed, and may be reproduced to distribute for educational purposes. Click on the 'Patients' link on the home page (Neurology.org) for a complete index of Patient Pages.

Neurology[®]

Recurrent stroke risk and cerebral microbleed burden in ischemic stroke and TIA: A meta-analysis

Duncan Wilson, Andreas Charidimou, Gareth Ambler, et al.
Neurology 2016;87;1501-1510 Published Online before print September 2, 2016
DOI 10.1212/WNL.0000000000003183

This information is current as of September 2, 2016

Updated Information & Services	including high resolution figures, can be found at: http://www.neurology.org/content/87/14/1501.full.html
Supplementary Material	Supplementary material can be found at: http://www.neurology.org/content/suppl/2016/09/02/WNL.0000000000003183.DC1
References	This article cites 37 articles, 19 of which you can access for free at: http://www.neurology.org/content/87/14/1501.full.html##ref-list-1
Subspecialty Collections	This article, along with others on similar topics, appears in the following collection(s): All Cerebrovascular disease/Stroke http://www.neurology.org/cgi/collection/all_cerebrovascular_disease_stroke Infarction http://www.neurology.org/cgi/collection/infarction Intracerebral hemorrhage http://www.neurology.org/cgi/collection/intracerebral_hemorrhage MRI http://www.neurology.org/cgi/collection/mri
Permissions & Licensing	Information about reproducing this article in parts (figures, tables) or in its entirety can be found online at: http://www.neurology.org/misc/about.xhtml#permissions
Reprints	Information about ordering reprints can be found online: http://www.neurology.org/misc/addir.xhtml#reprintsus

Neurology® is the official journal of the American Academy of Neurology. Published continuously since 1951, it is now a weekly with 48 issues per year. Copyright © 2016 American Academy of Neurology. All rights reserved. Print ISSN: 0028-3878. Online ISSN: 1526-632X.

