



Renzo’s rule revisited: a statistical study of galaxies’ baryon–dark matter coupling

Enoch Ko ^{1,2,3*}, Tariq Yasin ¹, Harry Desmond,⁴ Richard Stiskalek¹ and Matt J. Jarvis ^{1,5}

¹*Astrophysics, University of Oxford, Denys Wilkinson Building, Keble Road, Oxford OX1 3RH, UK*

²*DAMTP, Centre for Mathematical Sciences, University of Cambridge, Cambridge CB3 0WA, UK*

³*Department of Physics, University of Warwick, Coventry CV4 7AL, UK*

⁴*Institute of Cosmology & Gravitation, University of Portsmouth, Dennis Sciama Building, Portsmouth PO1 3FX, UK*

⁵*Department of Physics and Astronomy, University of the Western Cape, Robert Sobukwe Road, 7535 Bellville, Cape Town, South Africa*

Accepted 2025 November 7. Received 2025 October 27; in original form 2025 August 6

ABSTRACT

We present a systematic statistical analysis of an informal astrophysical phenomenon known as *Renzo’s rule* (or *Sancisi’s law*), which states that ‘for any feature in a galaxy’s luminosity profile, there is a corresponding feature in the rotation curve, and vice versa’. This is often posed as a challenge for the standard Λ cold dark matter (Λ CDM) model while supporting alternative theories such as modified Newtonian dynamics (MOND). Indeed, we identify clear features in the dwarf spiral NGC 1560 – a prime example for Renzo’s rule – and find correlation statistics which support Renzo’s rule with a slight preference for MOND over Λ CDM halo fits. However, a broader analysis on galaxies in the Spitzer Photometry & Accurate Rotation Curves (SPARC) data base reveals an excess of features in rotation curves that lack clear baryonic counterparts, with correlation statistics deviating up to 3σ on average from that predicted by both MOND and Λ CDM haloes, challenging the validity of Renzo’s rule. Thus we do not find clear evidence for Renzo’s rule in present galaxy data overall. We additionally perform mock tests, which show that a definitive test of Renzo’s rule is primarily limited by the lack of clearly resolved baryonic features in current galaxy data.

Key words: methods: statistical – galaxies: kinematics and dynamics – galaxies: statistics – dark matter.

1 INTRODUCTION

In the 1980s, observations of galaxy rotation curves (RCs) by V. C. Rubin, J. Ford & N. Thonnard (1980) revealed a significant discrepancy between the observed dynamics of galaxies and predictions from General Relativity based on their visible mass-energy content. This paved the way for the wide acceptance of today’s standard model of cosmology – the Λ cold dark matter (Λ CDM) model. In Λ CDM, the majority of our Universe’s mass comes in the form of a non-baryonic component known as dark matter (DM), which only interacts gravitationally with both itself and ordinary matter.

Nevertheless, despite decades of extensive research and remarkable observational advances, DM has not been detected and many facets of galaxy kinematics remain mysterious (for reviews, see S. S. McGaugh 2015; J. S. Bullock & M. Boylan-Kolchin 2017; A. Del Popolo & M. Le Delliou 2017). Here, we investigate one such facet known as *Renzo’s rule* (R. Sancisi 2004; also known as *Sancisi’s law*), which states that

‘For any feature in a galaxy’s luminosity profile, there is a corresponding feature in the RC, and vice versa’.

In Λ CDM, this is expected in regions where luminous stars dominate the dynamics, which would naturally reflect features in

their distribution in the total gravitational potential. However, the rule does not restrict itself to high-surface-brightness regions, but rather purports to describe a regularity *anywhere* along a rotation curve. In particular, some studies, e.g. B. Famaey & S. S. McGaugh (2012) and S. McGaugh et al. (2019), have stressed that Renzo’s rule seems to apply even in the presence of a large discrepancy between the visible and total dynamical mass, i.e. regions dominated by DM according to the Λ CDM model. This would argue for a strong correlation between luminous and dark matter, which is peculiar given the assumed collisionless nature of the latter: the DM halo is dynamically hot and pressure supported, so should not exhibit the same features as galaxies.

A more natural explanation for the putative rule is given by modified Newtonian dynamics (MOND; M. Milgrom 1983a,b,c). According to MOND, the kinematic discrepancies in RCs are not due to the existence of DM haloes, but are rather the result of a modified Newtonian gravitational field,

$$\mathbf{g} = \mathbf{g}_N \nu \left(\frac{g_N}{a_0} \right). \quad (1)$$

Here, \mathbf{g} is the total gravitational field, \mathbf{g}_N is the Newtonian gravitational field due to baryons with strength $g_N = |\mathbf{g}_N|$, $a_0 \approx 1.2 \times 10^{-10} \text{ ms}^{-2}$ is a new fundamental constant – a critical acceleration marking the transition between Newtonian and deep-MOND

* E-mail: enoch.eko@gmail.com

regimes, and $\nu(y)$ is the ‘interpolating function’ (IF) that connects the two regimes.

In particular, according to MOND, the underlying baryonic distribution completely governs the total gravitational potential of a galaxy. Since the luminosity profile closely maps the stellar mass density in a galaxy, and by extension, its baryonic distribution, Renzo's rule arises naturally. From the perspective of MOND, Renzo's rule could be formulated more physically for the radial dynamics of late-type galaxies as:

‘For any feature in a galaxy's total observed RC (V_{obs}), there is a corresponding feature in the RC predicted from the observed baryonic distribution (V_{bar}), and vice versa.’

This provides a simpler, more direct interpretation for testing Renzo's rule with RCs, thus is more suitable for the following study; we will henceforth refer to this statement as Renzo's rule, unless otherwise specified.

Renzo's rule is closely related to, but distinct from, a similar astrophysical phenomenon known as the radial acceleration relation (RAR; S. S. McGaugh, F. Lelli & J. M. Schombert 2016; F. Lelli et al. 2017; H. Desmond 2023; A. A. Văršeteanu et al. 2025), which describes a tight local correlation between the gravitational acceleration due to the total mass of a galaxy (g_{obs}) and that due to its baryonic component (g_{bar}). Similar to Renzo's rule, this connection persists in supposedly DM-dominated regions. If the RAR were completely free of intrinsic scatter it would contain Renzo's rule as the only way to produce a monotonic $g_{\text{bar}} - g_{\text{obs}}$ relation. However, the RAR appears to possess a small but non-zero scatter (S. S. McGaugh et al. 2016; H. Desmond 2023; A. A. Văršeteanu et al. 2025), and its overall shape is dominated by dynamics either towards the outer regions of galaxies with asymptotically flat V_{obs} , or around the innermost parts, where baryons dominate such that $g_{\text{obs}} \approx g_{\text{bar}}$; i.e. the RAR is a ‘summary’ statistic of RCs across many galaxies. This can mask the fine-grained details of the $V_{\text{bar}} - V_{\text{obs}}$ relation in individual galaxies, as described by Renzo's rule. By focusing on individual galaxies with RCs that exhibit clear features, a systematic test of Renzo's rule can provide important insight into these potentially anomalous connections between DM and galaxy dynamics independently of the RAR.

Although widely acknowledged and cited in the literature, often as supporting evidence for Λ CDM-alternatives like MOND, Renzo's rule is entirely informal, based entirely on visual inspection of RCs (e.g. see R. Sancisi 2004; G. Gentile et al. 2010; B. Famaey & S. S. McGaugh 2012; I. M. Santos-Santos et al. 2015; S. McGaugh et al. 2019). This paper aims to assess the rule's validity through a more systematic study: we examine features in both V_{obs} and V_{bar} of each galaxy and develop statistics to quantify their correlation. Specifically, with a systematic feature identification algorithm, we compute Pearson coefficients and dynamic time warping (DTW) alignment costs on the identified features. We also develop a set of MOND and Λ CDM mocks, taking into account prior uncertainties in galaxy properties and observational scatter, to assess the extent to which the observed correlations are compatible with those expected in the two theories, and investigate the properties a data set would need to have for a high-significance detection.

The paper is organized as follows. Section 2 introduces the data sets used in our study, including RCs from both observations and simulations. Section 3 then outlines the procedure for assessing the significance of Renzo's rule in each galaxy. The results are presented in Section 4, which includes an investigation on the data quality required for testing Renzo's rule in future galaxy surveys. Finally, the implications of our results are explored in Section 5, and the key conclusions are summarized in Section 6.

2 OBSERVED AND SIMULATED DATA

For our analysis, we gathered RCs from multiple sources. This includes observed data from (i) two different data sets of the dwarf spiral NGC 1560, (ii) the Spitzer Photometry & Accurate Rotation Curves (SPARC) data set, and (iii) Local Irregulars That Trace Luminosity Extremes, The Hi Nearby Galaxy Survey (LITTLE THINGS). We also examined galaxies from Λ CDM hydrodynamical simulations, as selected and simulated by I. M. Santos-Santos et al. (2015).

2.1 NGC 1560

The ‘poster child’ of Renzo's rule is the dwarf spiral galaxy NGC 1560, with its RC first studied in K. G. Begeman, A. H. Broeils & R. H. Sanders (1991). This is a gas-rich, low surface brightness galaxy with an H I mass of $(8.2 \pm 0.2) \times 10^8 M_{\odot}$ (A. H. Broeils 1992), a stellar mass of $\sim 5 \times 10^8 M_{\odot}$ (G. Gentile et al. 2010) and a dynamical mass of $\sim 1.2 \times 10^{10} M_{\odot}$ (assuming a spherical mass distribution, such that $M = V^2 R/G$). Furthermore, it is at a distance of 2.99 ± 0.10 Mpc (R. B. Tully et al. 2013), with an inclination of $82^{\circ} \pm 1^{\circ}$ (A. H. Broeils 1992).

The galaxy has a sizeable ‘kink’ between 4 and 6 kpc in the gas distribution, which is apparently reflected in the total RC despite the supposed DM domination at that radius (see Fig. 1). This is unnatural under the Λ CDM model since features in the baryonic RC should be smoothed out in the total RC by the dominant DM halo.

The RC of NGC 1560 has been mapped out several times in the literature (K. G. Begeman et al. 1991; A. H. Broeils 1992; R. Sanders 2007; G. Gentile et al. 2010). The method that seems to yield the strongest support for Renzo's rule is that of R. Sanders (2007), which displays a strong dip in both V_{obs} and its gas component (V_{gas}) at 4–6 kpc. However, we were unable to acquire a copy of this data set, and hence were forced to manually digitize its plot from R. Sanders (2007).¹ The result is shown in Fig. 1(a).

An alternative data reduction pipeline was used in G. Gentile et al. (2010), with a stellar mass model built on I -band data. These data were provided in private communication by Stacy McGaugh. The RCs are presented in Fig. 1(b), assuming a stellar disc mass-to-light ratio of $\Upsilon_{\text{disc}} = 1.43 \pm 0.2$ dex. We also investigate this data set, to provide a sense of the systematic uncertainty in Renzo-like correlations associated with different data analysis methods.

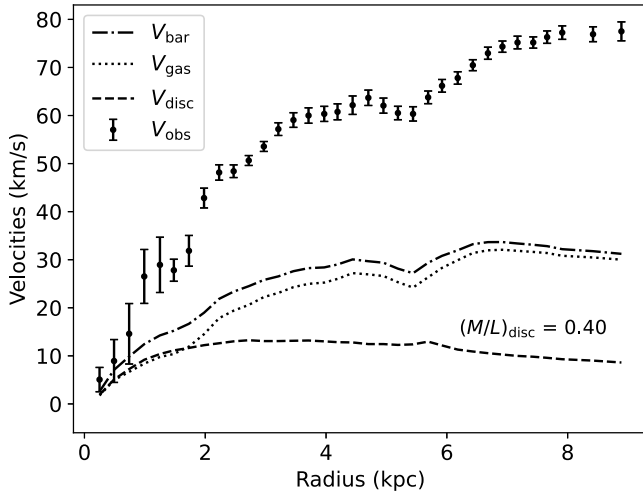
2.2 SPARC

The SPARC data base (F. Lelli, S. S. McGaugh & J. M. Schombert 2016) contains neutral atomic hydrogen (H I) RCs for 175 late-type galaxies, compiled from around three decades of literature. For 56 of the RCs, this is supplemented by H α data at higher spatial resolution in the inner regions. The data set covers a broad spectrum of galactic properties, with K -band luminosities ranging from $10^7 L_{\odot}$ to $10^{12} L_{\odot}$, effective radii from 0.3 to 15 kpc, surface brightness from 5 to $5000 L_{\odot} \text{pc}^{-2}$, and rotation velocities on the flat part of RCs from 20 to 300 km s^{-1} .

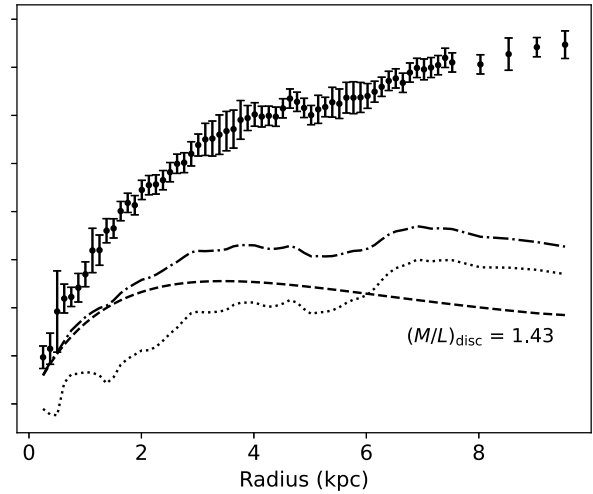
For each galaxy, the data base provides the contributions of gas (V_{gas}), stellar disc (V_{disc}), and bulge (V_{bul}) to the observed RC. It follows that the total baryonic contribution is

$$V_{\text{bar}} = \sqrt{V_{\text{gas}}^2 + V_{\text{disc}}^2 + V_{\text{bul}}^2}, \quad (2)$$

¹This was done with PLOT DIGITIZER (<https://plotdigitizer.sourceforge.net>), a free programme developed by J. A. Huwaldt.



(a) NGC 1560 from digitizing its RCs in Sanders (2007), assuming a fixed mass-to-light ratio of $\Upsilon_{\text{disc}} = 0.4$ (B-band) ± 0.1 dex.



(b) NGC 1560 from Gentile et al. (2010) (S. McGaugh, priv. comm.), assuming $\Upsilon_{\text{disc}} = 1.43$ (I-band) ± 0.2 dex.

Figure 1. The two different sets of RCs used for the dwarf spiral galaxy NGC 1560. In both plots, the total observed RC (V_{obs} ; error bars), its gaseous component (V_{gas} ; dotted line) and its stellar disc component (V_{disc} ; dashed line) are given; the total baryonic contribution (V_{bar} ; dash-dotted line) is calculated using equation (2), assuming uniform mass-to-light ratios of $\Upsilon_{\text{disc}} = 0.4$ and $\Upsilon_{\text{disc}} = 1.43$, respectively. Observe the features at around 4–6 kpc in both data sets, especially the large ‘kink’ in Sanders’s RCs, which is visible in both V_{obs} and V_{bar} , thus displaying a clear example of Renzo’s rule.

where the component are rescaled assuming stellar mass-to-light ratios for the gas, disc, and bulge of $\Upsilon_{\text{gas}} = 1.0 \pm 0.04$, $\Upsilon_{\text{disc}} = 0.5 \pm 0.125$, and $\Upsilon_{\text{bul}} = 0.7 \pm 0.175$, respectively. The data set also provides the measured values and uncertainties on the inclination, $3.6 \mu\text{m}$ luminosity, and the observational errors in the total RC (V_{obs}), which are assumed to be completely uncorrelated within each galaxy.

For our analysis, only galaxies with over 20 data points in each component RC are considered to ensure sufficient data for the statistical tests we perform; this reduces our final sample size to 60 galaxies.

2.3 LITTLE THINGS

LITTLE THINGS (D. A. Hunter et al. 2012) is a multiwavelength survey of 41 nearby (≤ 10.3 Mpc) dwarf galaxies, at an average distance of 3.7 Mpc. All galaxies have an inclination of $i \leq 70^\circ$ such that structures in the discs can be resolved. The data set covers a large range of dwarf galactic properties, all of which contain atomic hydrogen. Excluding obviously interacting galaxies, and galaxies with inclinations below 40° (where RC extraction can become biased; J. I. Read et al. 2016), and further assuming that both the stellar and gaseous components are well-represented by smooth exponential discs (thus no features are present in V_{bar}), J. I. Read et al. (2017) derived the total RCs (V_{obs}) for 19 of these galaxies. We obtained the data for 18 of these galaxies² in tabular form from B. Famaey (private communication) for our analysis.

2.4 MaGICC and CLUES simulated galaxies

A study by I. M. Santos-Santos et al. (2015) suggests that Renzo’s rule emerges in hydrodynamical Λ CDM simulations. The feedback

²We exclude NGC 6822, which is highly extended relative to the primary beam of the Very Large Array used by LITTLE THINGS; special treatment would be required to extract its RCs accurately.

parameters in these simulations were tuned to reproduce the stellar mass–halo mass relation from abundance matching at one chosen halo mass (specifically, for the irregular galaxy g15784_Irr), and once they were set, they remained fixed for simulations of haloes with different masses. Notably, Renzo’s rule was apparently recovered across a range of galaxy masses without its explicit addition, nor the incorporation of any closely related phenomena such as the baryonic Tully–Fisher relation (S. S. McGaugh et al. 2000). This suggests that, contrary to naive expectations, Renzo’s rule may be a result of non-trivial coupling between different mass components as they co-evolve within a Λ CDM Universe, which is yet to be understood.

More specifically, the authors presented 22 late-type galaxies, 12 of which are generated using the Making Galaxies in a Cosmological Context (MaGICC) smoothed particle hydrodynamical simulations (G. S. Stinson et al. 2012), and the rest with initial conditions from the CLUES project (Constrained Local UniversE Simulations; S. Gottloeber, Y. Hoffman & G. Yepes 2010; G. Yepes, S. Gottloeber & Y. Hoffman 2014). These galaxies span a wide range in velocity with $52 < V_{\text{flat}} < 222 \text{ km s}^{-1}$, where V_{flat} is the circular velocity of the asymptotically flat region of each RC. Of the 12 MaGICC galaxies, 5 are similar to the Milky Way (labelled MW), with stellar masses $6.30 \times 10^9 M_\odot \leq M_* \leq 5.67 \times 10^{10} M_\odot$ and halo masses $4.47 \times 10^{11} M_\odot \leq M_{\text{halo}} \leq 1.49 \times 10^{12} M_\odot$, while the rest, labelled Irregular (Irr), have masses $1.32 \times 10^8 M_\odot \leq M_* \leq 1.46 \times 10^{10} M_\odot$ and $5.23 \times 10^{10} M_\odot \leq M_{\text{halo}} \leq 2.82 \times 10^{11} M_\odot$. Meanwhile, the 10 CLUES galaxies, named C1 to C10, span a mass range of $3.78 \times 10^8 M_\odot \leq M_* \leq 1.45 \times 10^{10} M_\odot$ and $6.44 \times 10^{10} M_\odot \leq M_{\text{halo}} \leq 7.23 \times 10^{11} M_\odot$.

Notably, the authors identified four MaGICC galaxies and five CLUES galaxies,³ for which they state that features in V_{bar} are reflected in the corresponding V_{obs} , in support of Renzo’s rule. With

³The galaxies are g15807 Irr, g15784 Irr, g1536 MW, g5664 MW, C1, C5, C6, C7 (omitted due to merging), and C8.

the exception of galaxy C7, which is dynamically interacting with a very close companion galaxy, we obtained the data from both sets of simulations (21 galaxies in total) by digitizing the plots shown in I. M. Santos-Santos et al. (2015).

3 METHODS

To test Renzo's rule, we examine features in both V_{obs} and V_{bar} for each galaxy; if Renzo's rule holds, we expect a strong correlation between these features. This would be contrary to what is (at least naively) predicted by the Λ CDM model, where the addition of a smooth (e.g. NFW) halo would suppress such features in V_{bar} and give a smoother V_{obs} .

Our analysis involves four main steps. First, we generate versions of V_{obs} as predicted by MOND (V_{MOND}) and Λ CDM ($V_{\Lambda\text{CDM}}$) given the observed distribution of baryons. Details of this prediction are given in Section 3.1. Next, to separate out small-scale features from the smooth, larger-scale shape of the RC, residuals are calculated by applying a Gaussian process regression (GPR) to each RC (Section 3.2). Then, a simple feature identification algorithm is used on these residuals to detect galaxies exhibiting features in either or both V_{obs} and V_{bar} (Section 3.3). Finally, correlation statistics, including Pearson correlation coefficients and dynamic time warping, are computed on these residuals, and the results from the data are compared to those with V_{obs} replaced by V_{MOND} or $V_{\Lambda\text{CDM}}$ (Section 3.4).

3.1 MOND and Λ CDM rotation curves

We employ two different methods to generate V_{MOND} and $V_{\Lambda\text{CDM}}$. The first involves Markov chain Monte Carlo (MCMC) fits of V_{obs} , treating the galaxy properties and DM halo parameters as free parameters, with priors based on observational data. The second utilizes direct Monte Carlo (MC) sampling on the same priors to generate many instances of V_{bar} , which are used to create independent samples of V_{MOND} and $V_{\Lambda\text{CDM}}$; these model, respectively, the expected shapes of V_{obs} (with uncertainties) under a MOND and Λ CDM universe. As will be explained below, this corresponds to the difference between tuning the free parameters to match the data best ('MCMC method') versus simply propagating the prior distributions to create a priori expectations for the correlation statistics ('MC method').

In both approaches, V_{MOND} follows Milgrom's formula (equation 1), where we adopt the 'simple' interpolating function (B. Famaey & J. Binney 2005),

$$v(y) = \frac{1 + (1 + 4y^{-1})^{1/2}}{2}, \quad (3)$$

which is found to provide an excellent fit to SPARC galaxy kinematics (see P. Li et al. 2018; H. Desmond 2023; H. Desmond, D. J. Bartlett & P. G. Ferreira 2023; R. Stiskalek & H. Desmond 2023; H. Desmond, A. Hees & B. Famaey 2024).

For $V_{\Lambda\text{CDM}}$, we assume DM haloes are well-modelled by the Navarro–Frenk–White profile (NFW; J. F. Navarro, C. S. Frenk & S. D. M. White 1996)

$$\rho_{\text{NFW}}(r) = \frac{\rho_s}{\left(\frac{r}{r_s}\right) \left[1 + \left(\frac{r}{r_s}\right)\right]^2}, \quad (4)$$

where r_s is a scale radius and ρ_s a characteristic density, both of which are free parameters to be determined by MCMC fits or subhalo abundance matching, as will be explained below.

3.1.1 MCMC fits

For the first method, i.e. fitting of V_{MOND} and $V_{\Lambda\text{CDM}}$ with MCMC, we imposed truncated Gaussian priors on the distance, inclination, and luminosity of each galaxy. The best-fitting values from prior inferences are used as the means, and their corresponding uncertainties are taken as the standard deviations; the distance and luminosity are required to be positive, while the inclination is required to lie between 15° and 150° . Truncated Gaussian priors are also imposed on the mass-to-light ratios, with means and widths determined by the fiducial value(s) $\Upsilon_{\text{disc}} = 0.5 \pm 0.125$ and, if a bulge exists, $\Upsilon_{\text{bul}} = 0.7 \pm 0.175$; both ratios are required to be positive.

For $V_{\Lambda\text{CDM}}$ (NFW halo fits), we impose uniform priors (5.0, 15.0) on the logarithmic⁴ mass, $\log M_{200}$, where M_{200} is defined as the mass contained within a sphere of radius r_{200} , within which the average density is 200 times the critical density of the Universe, i.e.

$$M_{200} = \frac{4}{3}\pi r_{200}^3 \times 200 \rho_{\text{crit}} = \frac{4}{3}\pi r_{200}^3 \times 200 \left(\frac{3H^2}{8\pi G}\right). \quad (5)$$

We also impose Gaussian priors $\mathcal{N}(\log c_{200}, 0.11)$ on the logarithmic concentration, $\log c$, where c is defined as the ratio of the virial radius to the scale radius, $c = r_{200}/r_s$, and $\log c_{200}$ satisfies the concentration–mass relation

$$\log c_{200} = 0.905 - 0.101 \log(M_{200}/[10^{12}h^{-1}M_\odot]). \quad (6)$$

This relation is well-described by a log-normal distribution with an intrinsic scatter of 0.11 dex (A. V. Macciò, A. A. Dutton & F. C. Van Den Bosch 2008; A. A. Dutton & A. V. Macciò 2014). By integrating equation (4) and relating r_s to r_{200} via $r_s = r_{200}/c$, the DM component of $V_{\Lambda\text{CDM}}$ is derived to be

$$V_{\text{DM}}^2(r) = \frac{GM_{200}}{r} \times \frac{f(r/r_s)}{f(c)}, \quad (7)$$

where we define the function

$$f(x) \equiv \ln(1+x) - \frac{x}{1+x}. \quad (8)$$

In the MOND fits, the exact value of a_0 has negligible effect on our analysis (and similar analysis of baryon–DM dynamics in general, e.g. see P. Li et al. 2018), and is therefore treated as a fundamental constant with value $a_0 = 1.20 \times 10^{-10} \text{ m s}^{-2}$; thus no additional parameters are fitted for MOND.

For both profiles, we obtain the fits and their corresponding V_{bar} – representing a reasonable realisation of the galaxy's systematic uncertainties – by drawing 1000 random samples from the posterior using the No U-Turns Sampler (NUTS; M. D. Homan & A. Gelman 2014), as implemented in the NUMPYRO package (D. Phan, N. Pradhan & M. Jankowiak 2019). To provide a meaningful comparison with V_{obs} , the fits are further scattered by observational uncertainties, which we assume to be Gaussian and completely uncorrelated (as is assumed for SPARC galaxies).

3.1.2 MC sampling

For the second method, we generate 1000 instances of V_{bar} for each galaxy, sampling directly from (truncated) Gaussian uncertainties in the observed galaxy distance, luminosity, and mass-to-light ratios. For MOND, these uncertainties are propagated to V_{obs} by applying

⁴In this paper, \log denotes base-10 logarithm, whereas natural logarithms are denoted by \ln .

Milgrom’s formula (equations 1 and 3) to each realization. Again, a_0 is fixed.

For Λ CDM, we obtained V_{DM} from the technique of sub-halo abundance matching (SHAM), as outlined in R. Stiskalek et al. (2021), which is based on earlier results of abundance matching (A. V. Kravtsov et al. 2004; A. Vale & J. P. Ostriker 2004; C. Conroy, R. H. Wechsler & A. V. Kravtsov 2006; P. S. Behroozi, C. Conroy & R. H. Wechsler 2010; B. P. Moster et al. 2010; R. M. Reddick et al. 2013; B. V. Lehmann et al. 2016). Fundamentally, SHAM postulates the existence of a near-monotonic relation between a galaxy property (e.g. stellar mass or luminosity) and a halo property (often some function of virial mass and concentration). Assuming the NFW profile (equation 4) applies, SHAM provides a method to generate V_{DM} based solely on the stellar mass of each galaxy, independent of V_{obs} . The V_{DM} obtained is then added to each MC realization of V_{bar} in quadrature, followed by additional Gaussian scattering based on observational uncertainties in V_{obs} to give $V_{\Lambda\text{CDM}}$.

Specifically, the SHAM model takes in two free parameters, a generalized halo proxy m_α and a Gaussian scatter σ_{AM} , where α is defined as an interpolation between the peak virial mass over the history of the halo, M_{peak} , and the present-day value M_0

$$m_\alpha = M_0 \left(\frac{M_{\text{peak}}}{M_0} \right)^\alpha. \quad (9)$$

For our analysis, we have chosen $\alpha = 1.20$ and $\sigma_{\text{AM}} = 0.27$, which provide the best fit for M_* -based SHAM (R. Stiskalek et al. 2021).

3.2 Calculation of residuals

While the general profile of each RC is largely governed by the observed mass discrepancy, i.e. the various extent of DM dominance at large radii, Renzo’s rule pertains to the small-scale bumps and wiggles distinct from the RC’s overall shape. To extract these features from the otherwise smooth RCs, we turn to GPR. By using appropriate hyperparameters, the residuals from each GPR, denoted δV_X (e.g. δV_{obs} denotes the residuals from a GPR on V_{obs}), will contain all, and only, the small-scale features needed for probing Renzo’s rule.

Specifically, we fit each RC using a GPR with a squared exponential kernel (C. E. Rasmussen & C. K. I. Williams 2005), defined as

$$k_{\text{SE}}(x_i, x_j) = \sigma^2 \exp \left[-\frac{(x_i - x_j)^2}{2l^2} \right] + \epsilon_n^2 \delta_{ij}, \quad (10)$$

where σ^2 is the variance, ϵ_n^2 is a diagonal noise term, and l is the characteristic length scale of the kernel; physically, l determines the typical length of ‘wiggles’ allowed by the GPR fit, which should ideally be larger than the width of all visible small-scale features.

In particular, for each galaxy, we assign a common length-scale l to all its RCs (V_{bar} , V_{obs} , V_{MOND} , $V_{\Lambda\text{CDM}}$), ensuring that the overall shape of each RC is captured without overfitting into individual features. In general, l is chosen to be around half the maximum radius of each galaxy, such that visually, the GPR captures the overall arctan-like shape of V_{obs} . To account for small amounts of noise and variability, log-normal priors $\ln \mathcal{N}(0, 1)$ are also placed on σ^2 and ϵ_n^2 .

3.3 Feature identification

Features in the residuals are identified systematically using a simple algorithm. Given an RC, we first divide it into segments of positive and negative residuals, and select those containing at least 3 data points with height-to-noise ratios above 2.0, reducing the risk of

picking out random fluctuations due solely to observational errors. For V_{obs} , the noise (ϵ_{obs}) comes from observational errors, which we assume to be completely uncorrelated, whereas the noise in V_{bar} (ϵ_{bar}) is obtained from MC sampling on Gaussian uncertainties in the galaxy’s distance, luminosity, and mass-to-light ratios. Then, any adjacent segments are merged into a single, larger feature. By picking out the left and right base of each feature, the position and base width of each feature are also obtained automatically. This is detailed in Algorithm 1.

Algorithm 1 Feature identification

Inputs: GPR residuals ($\delta V_{\text{obs}}, \delta V_{\text{bar}}$) and noise ($\epsilon_{\text{obs}}, \epsilon_{\text{bar}}$)

$N \leftarrow \text{residuals/noise}$ ▷ Normalize residuals by noise
 $S_N \leftarrow \text{Split}(N)$
▷ N is split into positive and negative sublists, e.g.,
 $N = [-1, 1, 2, 3, -1, -2] \mapsto S_N = [[-1], [1, 2, 3], [-1, -2]]$

for each segment s in S_N **do**
 if s contains 3 or more elements with norm > 2.0 **then**
 add s to list of features
 end if
end for

for f_i in list of features **do**
 if right base of $f_i =$ left base of f_{i+1} **then**
 Combine f_i and f_{i+1} into one bigger feature
 end if
end for

Returns: Left bases, right bases and widths of features

Specifically, this algorithm is used in two different ways. First, by requiring at least one feature to appear in either V_{obs} or V_{bar} , it serves as a filter to select galaxies on which Renzo’s rule can be meaningfully tested. Secondly, this can be used to improve the residual calculations: the GPR can occasionally overfit the features, such that they are not captured entirely in the residuals; in this case, the algorithm (combined with visual verification) can be used to flag and remove such features from the RC, allowing us to fit a second, less biased GPR. Note that in principle, this may be performed iteratively, but we find minimal change after the first iteration in all cases.

3.4 Correlation statistics

For each galaxy, we compare the residuals of V_{obs} (δV_{obs}) and those of V_{bar} (δV_{bar}) using two correlation statistics: Pearson correlation coefficient and DTW cost. The same statistics are also computed between δV_{bar} and the corresponding δV_{MOND} and $\delta V_{\Lambda\text{CDM}}$.

It is worth mentioning that although the Spearman coefficient is often preferred for investigating non-linear correlations, it is not used here because it correlates ranked values instead of raw magnitudes. Specifically, Renzo’s rule deviates from Λ CDM expectations in DM-dominated regions, where features in V_{bar} should be largely, but not entirely, washed out by the dominant contribution of V_{DM} when summing in quadrature to form V_{obs} (see discussion in Section 5.1). On the other hand, Renzo’s rule posits that the feature sizes in V_{obs} and V_{bar} remain relatively similar (as predicted, for instance, by MOND). Distinguishing these two scenarios is crucial to our analysis, which requires preserving actual values rather than only ranks.

3.4.1 Pearson correlation

The Pearson correlation coefficient (K. Pearson & F. Galton 1895) is defined as

$$\rho_p \equiv \frac{\sum (x_i - \bar{x})(y_i - \bar{y})}{\sqrt{\sum (y_i - \bar{y})^2 \sum (x_i - \bar{x})^2}} \quad (11)$$

for two arrays $\{x_i\}_{i=0}^n, \{y_i\}_{i=0}^n$ with means \bar{x}, \bar{y} , respectively. ρ_p ranges from -1 to 1 , with 1 representing perfect linear correlation between the two arrays, -1 representing perfect linear anticorrelation, and 0 indicating an absence of linear correlation.

To better understand its behaviour as a function of radial distance, we calculate ρ_p from data in spheres of increasing radii, starting from the radius that encloses five data points and ending at the final measured data point.

3.4.2 Dynamic time warping

Originally developed for speech applications (T. K. Vintsyuk 1968), DTW is an efficient algorithm for measuring the similarity between two series of data. Given two arrays, $\mathbf{A} = \{A_i\}_{i=1}^m$ and $\mathbf{B} = \{B_j\}_{j=1}^n$ (in our case, V_{obs} and V_{bar} , so $m = n$), DTW matches their elements following four rules:

- (i) Every point in $\{A_i\}$ is matched with at least one point in $\{B_j\}$, and vice versa;
- (ii) A_1 is matched with B_1 (beginnings must match);
- (iii) A_m is matched with B_n (ends must match);
- (iv) The matching of indices, when viewed as a function $j \equiv \pi(i)$, forms a monotonically increasing sequence, i.e. if $i_1 < i_2$ and A_{i_1} (resp. A_{i_2}) is matched with B_{j_1} (B_{j_2}) such that $j_1 = \pi(i_1)$ and $j_2 = \pi(i_2)$, then $j_1 \leq j_2$.
- (v) Assuming features are locally correlated (e.g. a feature at the start of \mathbf{A} can only influence data points near the start of \mathbf{B}), which is likely the case for features in RCs, we only consider matches of indices within a window of ± 5 data points (inclusive), i.e. $\pi(i) \in [i - 5, i + 5]$.

We define the optimal alignment as the minimum Euclidean separation

$$\text{DTW}(\mathbf{A}, \mathbf{B}) = \min_{\pi \in \mathcal{M}} \left\{ \sum_{i=1}^m |A_i - B_{\pi(i)}| \right\}, \quad (12)$$

where \mathcal{M} is the set of all valid matches. DTW seeks this optimal alignment efficiently using dynamic programming. In other words, DTW is a flexible algorithm that works by shifting, inserting and/or merging elements in the two respective series under reasonable restrictions, in order to identify the alignment which minimizes their Euclidean separation.

In our analysis, DTW is used to compare $\delta V_{\text{obs}}, \delta V_{\text{MOND}}$, and $\delta V_{\Lambda\text{CDM}}$ to δV_{bar} (e.g. see Fig. 2). Specifically, the (normalized) alignment cost for each RC, V_X , with residuals δV_X , is defined as $\text{DTW}(\delta V_X, \delta V_{\text{bar}})$ via equation (12), divided by the total number of data points in the two curves. Thus a cost of 0 indicates the residuals of a RC is completely identical to δV_{bar} , while higher costs reflect decreasing similarity.

4 RESULTS

4.1 NGC 1560

Our algorithm identified a feature around 4.2–6.2 kpc in both V_{bar} and V_{obs} of Sanders's NGC 1560 (from manual digitization).

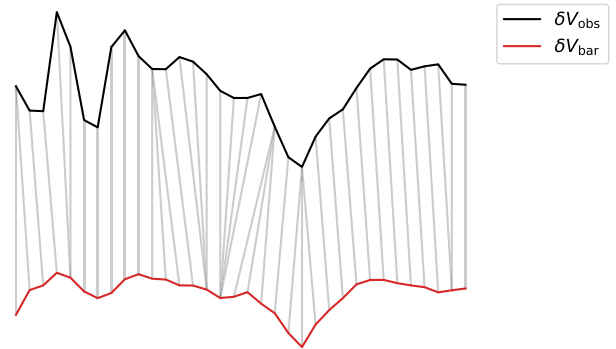


Figure 2. We demonstrate how DTW aligns δV_{obs} to δV_{bar} in Sanders's NGC 1560 data. Here, the grey lines depict the optimal mapping $\pi \in \mathcal{M}$ which minimizes the Euclidean separation of δV_{obs} and δV_{bar} to give the (normalized) DTW alignment cost, $\text{DTW}(\delta V_{\text{obs}}, \delta V_{\text{bar}})$, as defined in equation (12). Note that the two sets of residuals are shifted apart vertically to aid visualization.

Specifically, both features display a significant signal-to-noise ratio (above 2.0) around the feature, triggering the feature detection algorithm. Thus we expect this set of RCs to be useful in testing Renzo's rule.

In this case, we first generated V_{MOND} and $V_{\Lambda\text{CDM}}$ using MCMC fits (following Section 3.1.1). Then, a second, less biased GPR is fitted to each curve, where data points on all RC components that lie within the identified 4.2–6.2 kpc window are removed. With these residuals, we found that the Pearson correlation between δV_{obs} and δV_{bar} , denoted $\rho_p(\delta V_{\text{obs}}, \delta V_{\text{bar}})$, is higher than both $\rho_p(\delta V_{\text{MOND}}, \delta V_{\text{bar}})$ and $\rho_p(\delta V_{\Lambda\text{CDM}}, \delta V_{\text{bar}})$, with slight preference for stronger-correlated MOND statistics. Plotting the correlation coefficients up to a maximum radius, and varying that radius, it is clear that the strong correlation is largely due to the ‘kink’ at 4.2–6.2 kpc (as shown in Fig. 3). However, with DTW, the statistics for ΛCDM and MOND are very similar, with the observed data compatible with both sets of predictions (see Fig. 2 and first row of Table 1).

For our second version of NGC 1560 (S. McGaugh, private communication; data from G. Gentile et al. 2010), no features were identified in both V_{obs} and V_{bar} . Motivated by our first data set, we once again generated MOND and ΛCDM analogues and refitted GPRs, where points within the 4.2–6.2 kpc window are removed to minimize bias towards the reputed feature. Indeed, with these residuals, we do find a large dip in V_{bar} , which our algorithm does not originally identify as a feature since it was ‘overfitted’ by the GPR (this is technically not a feature as defined in Section 3.3). For this data set, both the Pearson coefficients and DTW costs indicate an exceptionally strong correlation between V_{obs} and V_{bar} , stronger than what is naively expected from the similar statistics of MOND and ΛCDM (this is especially true for DTW statistics; see second row of Table 1).

Using the information from our algorithm, we repeated the analysis on both data sets, this time restricted to the radial window of 4.2–6.2 kpc. The results, along with statistics from the previous ‘full analyses’, are shown in Fig. 4. These results are very similar to what was obtained in the full analyses. Notably, across all data sets, the Pearson coefficients indicate stronger correlation in MOND than ΛCDM as one naively expects, whereas with the many overlapping error bars, DTW appears to be inadequate in differentiating between the two predictions. This suggests that Pearson coefficients may be better suited

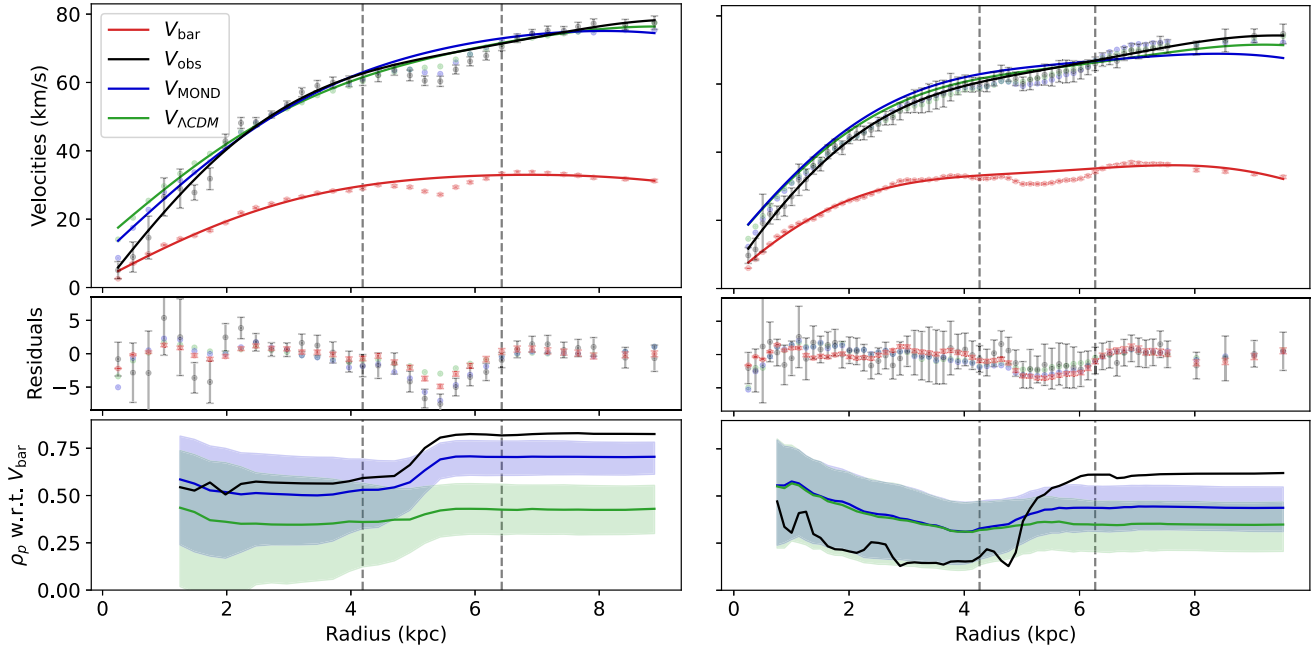


Figure 3. Statistics of V_{obs} , V_{MOND} , and $V_{\Lambda\text{CDM}}$ relative to V_{bar} for the two versions of NGC 1560; (*left*) RCs obtained from R. Sanders (2007) using PLOT DIGITIZER, and (*right*) RCs from G. Gentile et al. (2010; S. McGaugh, private communication). V_{MOND} and $V_{\Lambda\text{CDM}}$ are generated with MCMC fits. Each plot contains three panels showing, from top to bottom: the various data and fits, residuals from the GPR (with kernel length scale $l = 4.5$ kpc, and fitted with points within the 4.2–6.2 kpc window removed), and the Pearson coefficients as a function of maximum radii, where the bands outline the 1σ -confidence range around the displayed means (solid lines) as obtained from the 1000 realizations of each RC. The dashed vertical lines indicate the boundaries of the 4.2–6.2 kpc window, within which features are identified in both V_{obs} and V_{bar} of Sanders’s RCs, but not in that of G. Gentile et al. (2010) – note that in the original GPR, i.e. without removing points in the 4.2–6.2 kpc window, the now-visible dip in G. Gentile et al. (2010) is part of a larger ‘wiggle’ at around 4.5–7.5 kpc, which does not achieve a signal-to-noise ratio of 2.0 to trigger the feature identification algorithm; of course, with the new, refitted GPR, the large dip is identified by Algorithm 1, but it is technically not a feature since points are altered for the new GPR (which may have introduced bias in its residuals). Error bars for MOND and ΛCDM , which are of the same size as that in V_{obs} , are suppressed to avoid clutter. Note that we only show the correlation coefficients at ≥ 5 data points since, before that, ρ_p simply fluctuates unpredictably between -1 and 1 due to pure noise.

Table 1. DTW costs of residuals relative to δV_{bar} for the two different versions of NGC 1560, with 1σ uncertainties derived from the 1000 samples in our MCMC fitting procedure. Note that, as opposed to Pearson coefficients, a lower DTW costs indicates a stronger correlation. We see that in both cases, DTW fails to provide a clear separation between the expectations from MOND and ΛCDM , but indicates an exceedingly strong correlation in the data (especially for that from G. Gentile et al. 2010), even beyond that expected by MOND.

	V_{obs}	V_{MOND}	$V_{\Lambda\text{CDM}}$
R. Sanders (2007)	0.62	$0.71^{+0.16}_{-0.13}$	$0.70^{+0.14}_{-0.13}$
G. Gentile et al. (2010)	0.30	$0.99^{+0.13}_{-0.11}$	$0.95^{+0.12}_{-0.11}$

than DTW for testing Renzo’s rule; a systematic comparison between Pearson coefficients and DTW, using mock data, will be presented in Section 4.5.

By taking the average uncertainties on each error bar in Fig. 4, we can also estimate the significance of deviation for the observed statistics relative to that predicted by MOND and ΛCDM , which are presented in Table 2. If the observational errors in V_{obs} are accurate and completely uncorrelated, these results would indicate a surprisingly strong correlation in both data sets, exceeding even what is expected by MOND by upwards of 5σ . But, as hinted, this unlikely result is possibly explained by (i) overestimated errors in V_{obs} ; and/or (ii) a correlation between the data points, such that the correlation statistics are in fact underestimated by our generated

MOND and ΛCDM samples, where we assumed no covariance. Indeed, both caveats are especially crucial for our analyses on the densely sampled RCs from G. Gentile et al. (2010), which contains visibly larger and more correlated uncertainties than that in Sanders’s data set.

Nevertheless, assuming such overestimations and/or correlations are not large (as is likely the case for Sanders’s data set), these results suggest that fluctuations in V_{obs} tend to agree more with expectations from MOND than ΛCDM (specifically that from a NFW halo fit), supporting earlier claims of Renzo’s rule by R. Sanders (2007) and G. Gentile et al. (2010). That said, more detailed studies and modelling of the dwarf spiral is evidently required to better understand the origin and strong correlation of its features, before any conclusive claims can be established.

4.2 SPARC galaxies

Out of the 60 SPARC galaxies, a total of 31 features are identified in V_{obs} in the RCs of 25 galaxies, whereas no features are identified in any of the V_{bar} measurements. Note that while there are a few interesting cases where prominent features are visible in V_{obs} without similar fluctuations in V_{bar} , strongly correlated (and possibly overestimated) a priori uncertainties in galaxy properties such as distances, mass-to-light ratios, etc., also contributed heavily to the lack of identifiable features in V_{bar} ; these uncertainties are treated as uncorrelated by Algorithm 1, which makes it practically impossible

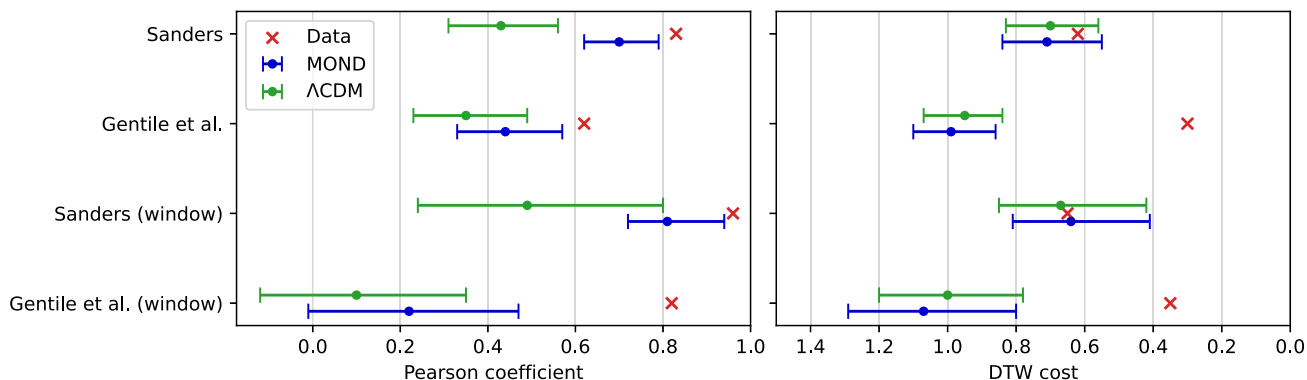


Figure 4. A summary of all correlation statistics on NGC 1560 – Pearson coefficient (*left*) and DTW cost (*right*; here the x -axis is reversed such that stronger correlations appear towards the right in both plots). The four data sets involved, ordered from top to bottom, are (i) the complete RCs in R. Sanders (2007) from plot digitization, (ii) the complete RCs in G. Gentile et al. (2010) from private communication with S. McGaugh, (iii) Sanders’s RCs restricted to 4.2–6.2 kpc, where a feature is identified in both V_{bar} and V_{obs} , and (iv) Gentile’s RCs, similarly restricted to 4.2–6.2 kpc, but where no features were identified. Our results indicate that in most cases, especially in the RCs from G. Gentile et al. (2010) features in V_{obs} and V_{bar} of correlate stronger than what is expected from Λ CDM (specifically that from a smooth NFW halo) and even MOND. However, in many cases (especially for DTW), the same statistics fail to separate clearly the expectations from MOND and Λ CDM, likely due to large and strongly correlated uncertainties the data, which overscatter the corresponding MC samples, weakening the expected correlations. This suggests that a more detailed study of the dwarf spiral is required to better understand the origin and strong correlations of its features.

Table 2. We summarize the normalized deviation (in σ) of the correlation statistics obtained from both data sets of NGC 1560, relative to expectations from MOND and Λ CDM (NFW haloes). Note that a positive deviation in Pearson coefficients (denoted ρ_p) indicates stronger correlation than predicted, whereas the signs are swapped for DTW, i.e. stronger correlations are reflected as negative deviations. In most cases, we find an exceedingly strong correlation for features in the data, even beyond the corresponding expectations from MOND (with up to 5σ deviation in the second case). These statistics likely reflect the overestimation and/or strong correlation of errors in the data, rather than a definitive preference or rejection of either theory.

Deviation (in σ) w.r.t.	MOND		Λ CDM	
	ρ_p	DTW	ρ_p	DTW
R. Sanders (2007)	1.53	−0.62	3.2	−0.59
G. Gentile et al. (2010)	1.5	−5.75	2.08	−5.65
R. Sanders (2007); window	1.36	0.05	1.68	−0.09
G. Gentile et al. (2010); window	2.5	−2.94	3.06	−3.1

for fluctuations in V_{bar} to achieve the threshold signal-to-noise ratio of $T = 2.0$ (see Fig. 5). Nevertheless, V_{MOND} and $V_{\Lambda\text{CDM}}$ are generated using MC sampling (as outlined in Section 3.1.2), and the same procedures of residual calculations with GPR and correlation calculations are applied across each set of RCs.

A summary of the correlation statistics for all SPARC galaxies is presented in Fig. 6, where galaxies are arranged in ascending correlations between δV_{obs} and δV_{bar} , i.e. ascending Pearson coefficients and descending DTW costs. Note that in most cases, due to the high level of noise and lack of features in V_{bar} , both the Pearson coefficient and DTW cost fail to discern between the statistics expected from MOND and Λ CDM. Interestingly, galaxies with a feature(s) identified in V_{obs} (but not V_{bar}) tend to have higher DTW costs, whereas there is not a similar pattern in the Pearson coefficient distribution.

To narrow down our test for Renzo’s rule, the same analysis is repeated on only the 25 galaxies where at least one feature is found in V_{obs} . Additionally, data points located outside the windows which contains such features (as identified by Algorithm 1) are disregarded.

Arranged similarly as before, a summary of the statistics obtained is shown in Fig. 7. It is clear that while the expectations from MOND and Λ CDM remain largely indistinguishable, the correlation between δV_{obs} and δV_{bar} is always weaker than or comparable to what is expected by both MOND and Λ CDM. Therefore, we find no evidence for Renzo’s rule in SPARC galaxies.

Interestingly, reorganizing the results presented in Fig. 7, we find that the features identified in V_{obs} are, on average, less correlated to V_{bar} than is expected by both MOND and Λ CDM with above 3σ significance.⁵ This suggests that, contrary to Renzo’s rule, we observe an excess of features (or possibly features of unexpected shapes and sizes) in V_{obs} of SPARC galaxies, relative to that predicted by V_{bar} under both MOND and smooth Λ CDM haloes. While undoubtedly surprising, there are several caveats to keep in mind when interpreting this result, which we discuss in detail under Section 5.

4.3 LITTLE THINGS galaxies

Unfortunately, only V_{obs} is available in our data set, and no features are identified from the 18 RCs. However, as explained below, further analysis shows that the absence of features may be the result of an inaccurate error model, which our feature identification algorithm relies on for separating features from observational noise.

Assuming the observational errors are completely uncorrelated (as is the case for SPARC), we obtained 1000 MC samples of V_{obs} by sampling each data point from the Gaussian distribution $\mathcal{N}(V_{\text{obs}}, \epsilon_{\text{obs}})$. To investigate the lack of features, we consider varying the noise threshold, T , with which features are identified using the algorithm in Section 3.3 (where the fiducial value was $T = 2.0$). A feature is therefore identified if a peak/trough spans at least three

⁵Specifically, we find an average deviation in Pearson coefficients of -3.47σ w.r.t. MOND and -3.03σ w.r.t. Λ CDM, and an average deviation in DTW costs of $+3.69\sigma$ (MOND) and $+3.48\sigma$ (Λ CDM). Recall that, contrary to Pearson coefficients, positive deviations in DTW costs represent weaker-than-expected correlations, thus on average, we find features in V_{obs} to be less correlated to V_{bar} than expected under both sets of statistics.

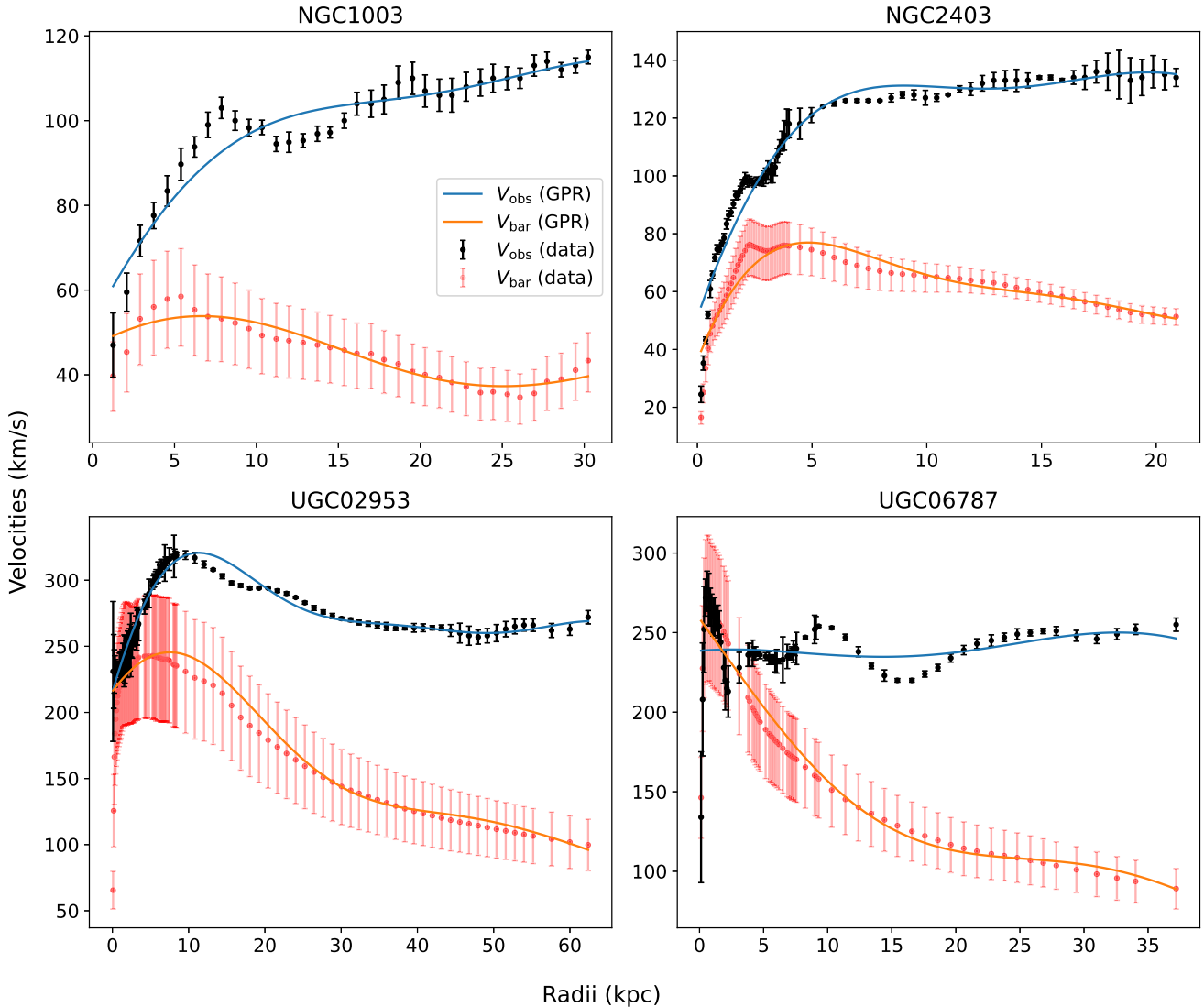


Figure 5. We display four SPARC galaxies where at least one feature is identified in V_{obs} , but not in V_{bar} (see error bars). The solid lines show the GPR fits, relative to which features are identified. While there are interesting cases where prominent features are visible in V_{obs} without similar fluctuations in V_{bar} , most notably in UGC 6787 (as shown on the bottom-right panel), strongly correlated (and possibly overestimated) a priori uncertainties in galaxy properties such as distances, mass-to-light ratios, etc., also contributed heavily to the lack of identifiable features in V_{bar} ; these uncertainties are treated as uncorrelated by Algorithm 1, making it practically impossible for fluctuations in V_{bar} to achieve the threshold signal-to-noise ratio of $T = 2.0$.

data points with at least one point having a height-to-noise ratio $\geq T$. We can then find the maximum value of T for each galaxy at which at least one feature can be identified from the RC. Dividing by 1000, this represents the expected distribution of T_{max} from pure Gaussian noise in the 18 RCs, which we can compare to our data set.

In Fig. 8, we show that our galaxies exhibit even fewer features than that expected from pure Gaussian noise, suggesting that the errors in LITTLE THINGS may be overestimated and/or correlated. This could explain the absence of detected features at $T = 2.0$, even if such features are genuinely present. Additionally, the expected distribution from MC sampling (which has a similar shape for SPARC) supports the choice of $T = 2.0$ in Algorithm 1, as fluctuations above this threshold are unlikely to arise solely from uncorrelated observational noise.

4.4 MaGICC and CLUES simulated galaxies

We performed two separate analyses for the MaGICC and CLUES simulated galaxies, one using the original simulated data set, and one with additional scattering to estimate the effect of observational uncertainties.

Using the original data set (without observational noise), we generated V_{MOND} and V_{ACDM} using MCMC fits (see Sections 3.1.1 and 4.1), and applied similar correlation statistics, the results of which are summarized as solid-line plots in Fig. 9. We find that, compared to expectations from MOND, both the DTW costs and Pearson coefficients suggest that features in the simulated galaxies are slightly more compatible with the weaker correlation predicted by our Λ CDM halo fits. This indicates that the Renzo-rule behaviour reported by I. M. Santos-Santos et al. (2015) may not be as unexpected as originally claimed, but rather exists at the level one

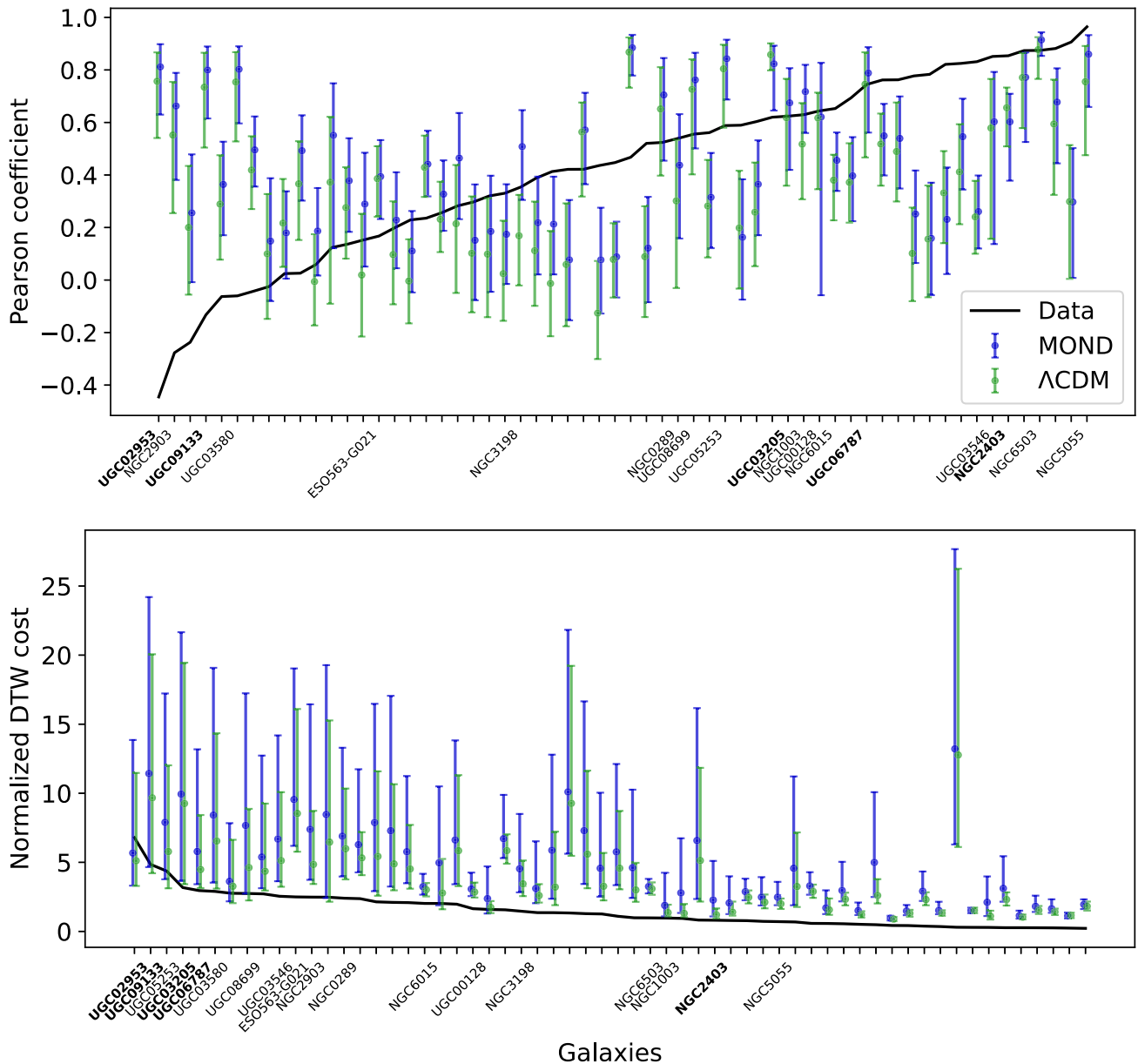


Figure 6. Statistics of Pearson coefficients (top) and DTW (bottom) on SPARC data. In both plots, the solid line outlines the statistics between δV_{Obs} and δV_{bar} in ascending correlations, i.e. ascending Pearson coefficients and descending DTW costs. The error bars show the 1σ statistics (from MC samples) of δV_{MOND} and $\delta V_{\Lambda\text{CDM}}$ with respect to δV_{bar} . Galaxies labelled along the x -axis contain feature(s) in V_{obs} (but not V_{bar}), as identified by the feature identification algorithm (see Section 3.3); those that are in bold contain two features in V_{obs} , while those in regular font contain only one. We see that in most cases, likely due to the high level of noise and lack of features in V_{bar} , both the Pearson coefficient and DTW cost fail to discern between the statistics expected from MOND and Λ CDM, thus no clear conclusion can be made on the validity of Renzo's rule.

would naively expect for a featureless halo superimposed on the baryonic mass.

To simulate systematic and observational errors in existing galaxy surveys, we introduced artificial Gaussian noise of size $0.02 \times \max(V_{\text{obs}})$ to all RCs; this is the average noise level present around the feature identified in Sanders's NGC 1560. The results are shown in Fig. 9, this time with error bars outlining the 1σ ranges as obtained from MC sampling on the artificial noise. For a handful of galaxies, their Pearson coefficients continue to indicate closer alignment between data and Λ CDM expectations, as opposed to that expected from MOND. However, it is clear that even with

relatively conservative noise [compared to, e.g. the average scatter of $0.05 \times \max(V_{\text{obs}})$ in SPARC galaxies], the overlapping error bars show that, in most cases, both Pearson and DTW statistics struggle to distinguish between the MOND and Λ CDM expectations, once again demonstrating the difficulty of testing Renzo's rule in more realistic data.

As with previous data sets, we repeat the same analyses, now restricted to data points located within feature windows identified by Algorithm 1. The results are presented in Fig. 10. Note that the set of features identified by our algorithm is slightly different to that identified visually by I. M. Santos-Santos et al. (2015). Similar

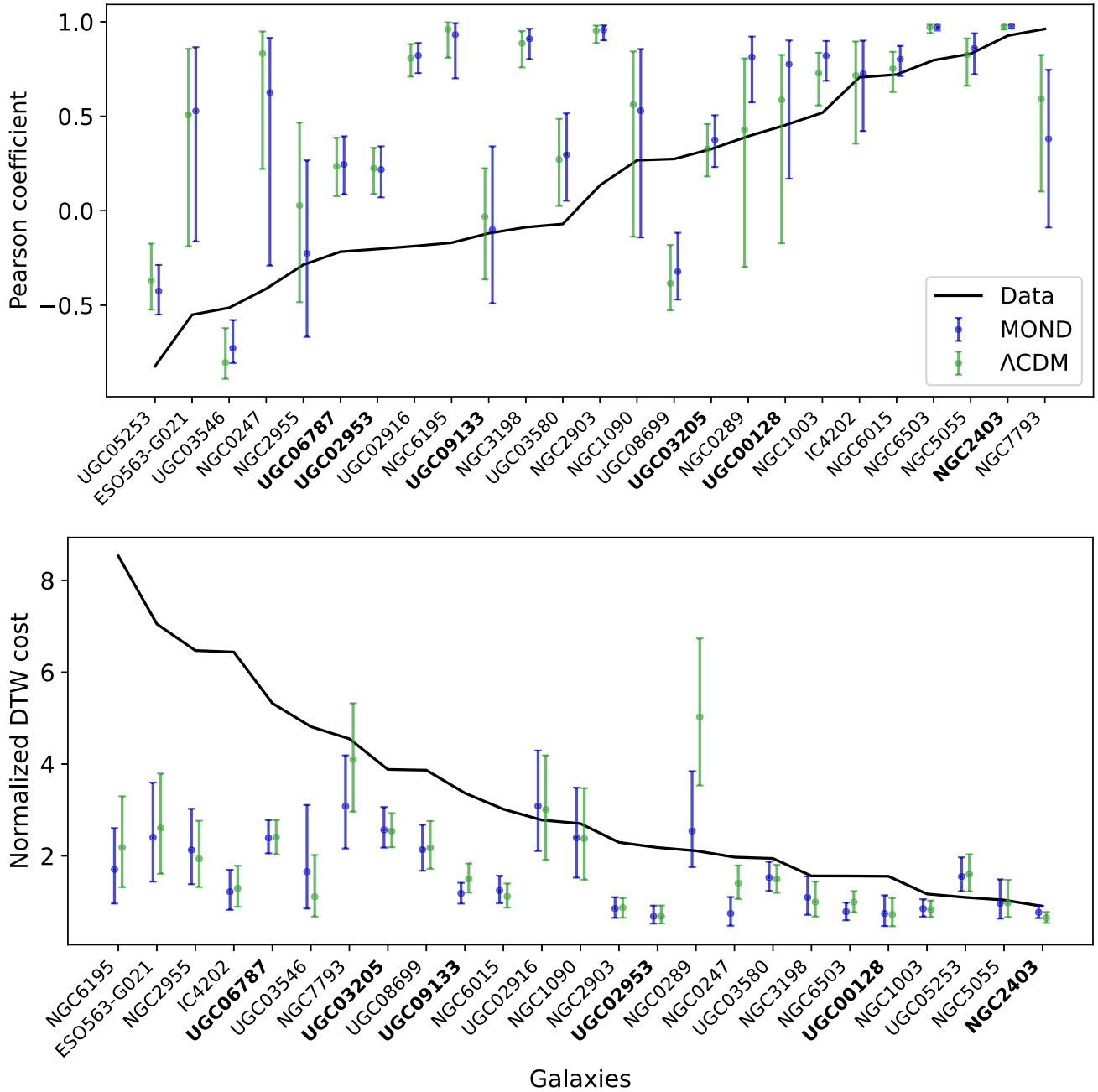


Figure 7. Correlation statistics of SPARC galaxies, where only data points which are part of the 31 identified features (shared among 25 galaxies) are considered. All plots are labelled identically as described in Fig. 6, with galaxies ordered again in ascending correlations between δV_{obs} and δV_{bar} . Observe that while the expectations from MOND and Λ CDM remain largely indistinguishable, the correlation between δV_{obs} and δV_{bar} is always weaker than or comparable to what is expected by both MOND and Λ CDM. Therefore, we do not find clear evidence for Renzo’s rule in the SPARC data set.

to before, the windowed analysis shows the data to be consistently less correlated than what is expected by MOND, and often even less than, but arguably closer to that of Λ CDM. However, with the greatly reduced number of data points, we see that both correlation statistics are more affected by the introduction of artificial noise, with much larger error bars in both and often unstable behaviour for DTW specifically.

Given null results from both the full and windowed analyses, we conclude that no evidence for Renzo’s rule is found in the MaGICC and CLUES simulated galaxies. Specifically, we find that features in

these RCs, as presented in I. M. Santos-Santos et al. (2015), do not correlate to a greater degree than that expected from smooth Λ CDM haloes.

4.5 Mock data

The preceding results indicate that currently existing data is not of sufficiently high quality to robustly identify features that correlate between the baryonic and total RCs. The culprits for this are (i) a lack of strong features in the data in the first

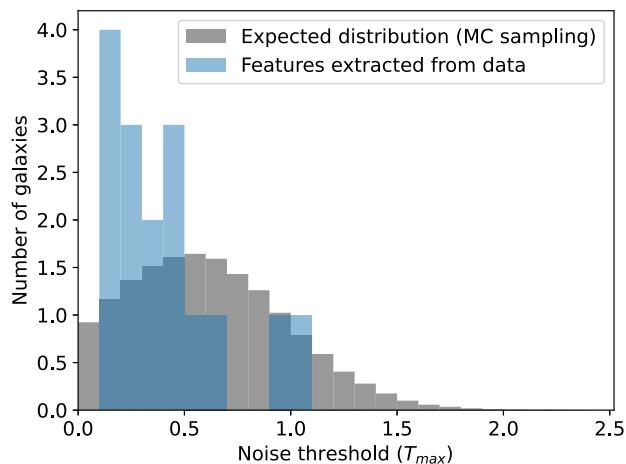


Figure 8. Histogram of the maximum noise threshold (T_{\max}) one can impose on LITTLE THINGS galaxies such that at least one feature is identified in each corresponding RC. A comparison with MC samples shows that there are fewer features identified than what one expects from pure Gaussian noise around the same RCs, suggesting that the uncertainties in LITTLE THINGS are overestimated. This may be responsible for the apparent lack of features.

place, and (ii) significant observational uncertainties. We are thus led to wonder what conditions would have to be satisfied for Renzo's rule to be distinctly apparent in our tests, and whether such conditions are likely to arise in future, more precise data.

To investigate this, we perform a set of mock tests involving simplified model galaxies containing a single Gaussian feature. The procedure for this is as follows:

(i) Generate mock V_{bar} using the arctan function on $r \in [0, 10]$ kpc, with a variable sampling rate of n data points per kpc. This is multiplied by $35 \times 2/\pi$ to produce a physical V_{bar} (in km s^{-1}), similar to that of NGC 1560.

(ii) Imitating the feature in Sanders's NGC 1560, we subtract a Gaussian dip $-4.0 \times \mathcal{N}(5.0, 0.3)$ from V_{bar} to simulate a baryonic RC with a significant feature.

(iii) Generate V_{MOND} by applying equation (1) to V_{bar} .

(iv) Generate V_{ACDM} using MCMC fits on V_{MOND} (as outlined in Section 3.1.1).

(v) Scatter all RCs generated (V_{bar} , V_{MOND} , and V_{ACDM}) by uncorrelated Gaussian noise of variable amplitude ϵ , giving 1000 sets of noisy RCs per ϵ .

(vi) Apply the same GPR and correlation calculations to each set of RCs as outlined in Sections 3.2–3.4. In particular, we define $r = 4.0\text{--}6.0$ kpc to be the feature window (see Fig. 11), which contains $N = 2n$ data points. This is such that for each RC, (a) the N data points within this window are removed before applying each GPR to reduce bias towards the feature; and (b) we perform two sets of analyses for each sample: one using the full RCs, and another using only these N data points.

(vii) Vary the sampling rate n from 2 to 40 (by integer increments) and the signal-to-noise ratio h/ϵ from 1 to 20 (by half-integer increments).

For each sampling rate n , we first look at how the correlation statistics vary as a function of feature-to-noise ratio, h/ϵ (see Fig. 12). Noting that the errors are approximately symmetric, we define the

feature significance as

$$S(N \equiv 2n, h/\epsilon) = \frac{|\mu_M - \mu_\Lambda|}{\sqrt{\sigma_M^2 + \sigma_\Lambda^2}}, \quad (13)$$

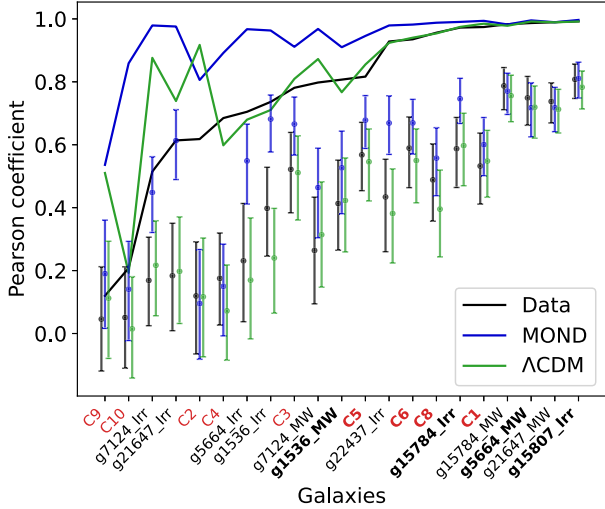
where μ_M denotes the median correlation (Pearson coefficients or DTW costs) between δV_{MOND} and δV_{bar} , and μ_Λ denotes that between δV_{ACDM} and δV_{bar} . Correspondingly, σ_M defines the near-symmetric 1σ uncertainties around μ_M , while σ_Λ is for that around μ_Λ .

Using equation (13), we can further plot the feature significance as a two-dimensional distribution over both the sampling rate n and signal-to-noise ratio h/ϵ . For a Gaussian dip $\mathcal{N}(5.0, 0.3)$, the results are shown in Fig. 13 (analyses with full RCs) and Fig. 14 (analyses focused on feature window); we have verified that the overall distribution does not vary much when different feature widths (ranging from 0.2 to 0.4) are used. As expected from earlier analyses on existing data, Pearson coefficients demonstrably outperforms DTW in distinguishing between the statistics from MOND and Λ CDM. Comparing the two sets of histograms, we also see that the significances are generally increased when we narrow down our analyses from using full RCs (Fig. 13) to only the 4.0–6.0 kpc feature window (Fig. 14), though the improvement is not as appreciable as one might have expected.

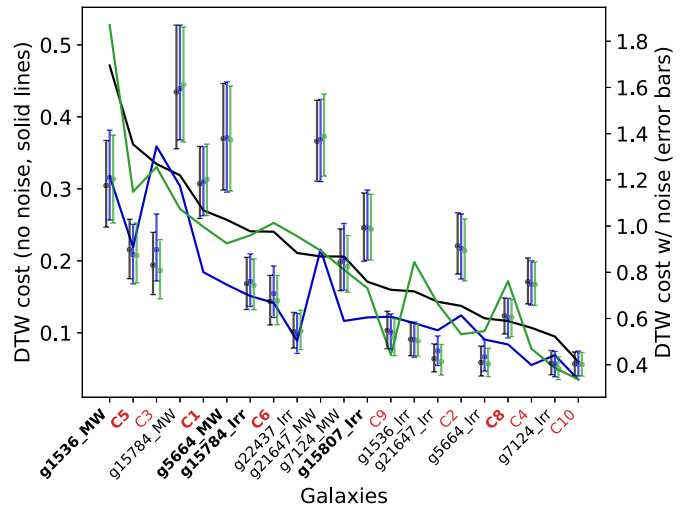
Moreover, plugging in the earlier results from Sanders's NGC 1560 data to equation (13), we obtain significances of roughly $S = 1.79$ for Pearson and $S = 0.05$ for DTW in the full analysis, and $S = 1.06$ (Pearson) and $S = 0.10$ (DTW) for the windowed analysis. Indeed, from the two-dimensional histograms, one can expect the same feature (marked by the gold stars) to achieve significances of around 1σ for Pearson and negligible significance for DTW, in agreement with our calculations.

Furthermore, plotting the features found in SPARC, which are identified only in V_{obs} , we see that if such features exist instead in V_{bar} with similar sampling rates and feature-to-noise ratios, they would be expected to achieve exceptionally high significances, making them incredibly useful for testing Renzo's rule; most notably, we have the 'wiggle' in V_{obs} of UGC 6787 (see bottom right panel of Fig. 5), which is not shown in Figs 13 and 14 since it lies beyond the boundaries with $N = 27$ and $h/\epsilon = 24.2$. This demonstrates that, if more baryonic features are present at the quality observed in V_{obs} of SPARC galaxies, our methodology is capable of testing Renzo's rule decisively, with statistics from Λ CDM and MOND discernible to well beyond 5σ significance.

More generally, we find that to gain higher feature significance, reducing the observational noise ϵ (such that h/ϵ increases) is often more important than enhancing the sampling rate (and therefore increasing N). For instance, with the feature in Sanders's NGC 1560, which consists of 10 points and has a signal-to-noise ratio of $h/\epsilon = 3.16$, one can achieve 2σ and 5σ significances with Pearson coefficients by reducing the noise by roughly 50 per cent and 80 per cent, respectively; whereas, it is impossible to achieve these significances by enhancing the sampling rate alone. Similarly, using Pearson coefficients, and with an average of $N = 11.1$ for the features identified in V_{obs} of SPARC galaxies, one can expect to test Renzo's rule with up to 2σ significance should there exist features in V_{bar} with $h/\epsilon \approx 5$, and up to 5σ with $h/\epsilon \approx 12$. Note that in present SPARC data, the average signal-to-noise ratio for features in V_{obs} is 8.28. Hence, if a galaxy is identified to have a baryonic feature with similar properties, the method presented is a promising test for Renzo's rule up to $S = 3\sigma$, with higher significances likely requiring galaxy data of higher quality.

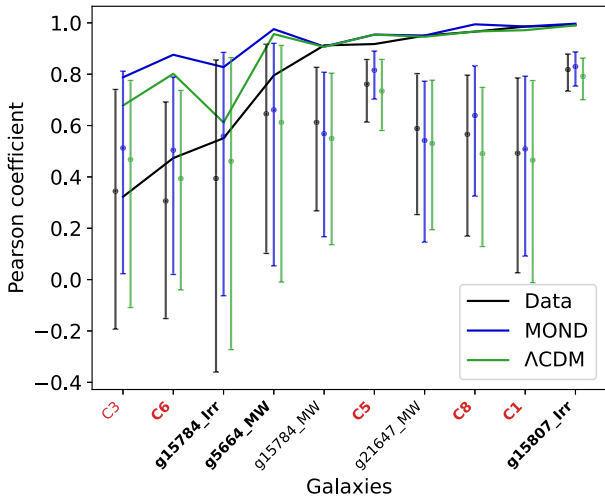


(a) Pearson coefficients on MaGICC and CLUES galaxies.

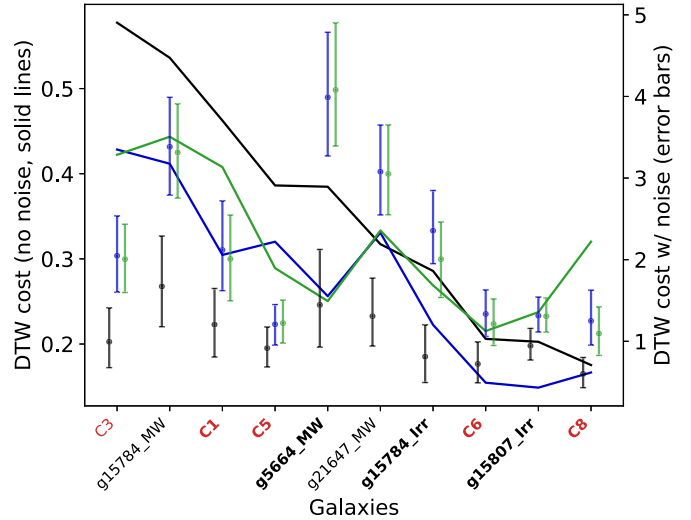


(b) DTW costs on MaGICC and CLUES galaxies.

Figure 9. Statistics of Pearson coefficients (left) and DTW (right) on galaxies from the MaGICC (labelled along the x -axes in black) and CLUES (in red) simulations. In both plots, the black solid line outlines the statistics between δV_{obs} and δV_{bar} in ascending correlations, i.e. ascending Pearson coefficients and descending DTW costs. The blue and green solid lines show the statistics of δV_{MOND} and $\delta V_{\Lambda\text{CDM}}$, respectively, with respect to δV_{bar} . Correspondingly, the error bars show the 1σ range (from MCMC fits) of correlation statistics after an artificial Gaussian noise of size $0.02 \times \max(V_{\text{obs}})$ is introduced to all RCs. Galaxies labelled in bold along the x -axes contain noticeable features, which are (visually) identified by I. M. Santos-Santos et al. (2015) to support Renzo’s rule. Note that to improve readability, dual y -axes are used in the DTW plot.



(a) Pearson coefficients on MaGICC and CLUES galaxies.



(b) DTW costs on MaGICC and CLUES galaxies.

Figure 10. Correlation statistics for galaxies from the MaGICC and CLUES simulations, where only data points located within feature windows (as identified by Algorithm 1) are considered; note that this does not necessarily coincide with the set of galaxies identified visually by I. M. Santos-Santos et al. (2015). All plots are labelled and arranged in the same way as outlined in Fig. 9.

5 DISCUSSION

5.1 Renzo’s rule in ΛCDM

Before discussing specific results, we should address the central question: is Renzo’s rule compatible with the standard ΛCDM model? As introduced in Section 1, Renzo’s rule is often suggested as a major problem for ΛCDM (e.g. see B. Famaey & S. S. McGaugh 2012 and S. McGaugh et al. 2019). Indeed, without some strange coupling between luminous and dark matter, it seems difficult to explain the existence of strongly correlated features at supposedly DM-dominated

regions of galaxies. However, even in the absence of observational errors, there are two reasons why one may expect Renzo’s rule to appear within a ΛCDM Universe, with features resembling that expected by MOND.

First, even with a perfectly smooth DM halo, e.g. one modelled by the NFW profile (see equation 4), features in V_{bar} are still reflected in V_{obs} , often appearing larger than one intuitively expects. Concretely, consider a DM-dominated region where V_{obs} is around twice the magnitude of V_{bar} , such that the DM component is given by $V_{\text{DM}}^2 = V_{\text{obs}}^2 - V_{\text{bar}}^2 = 3 \times V_{\text{bar}}^2$. Then, suppose we introduce a feature in V_{bar}

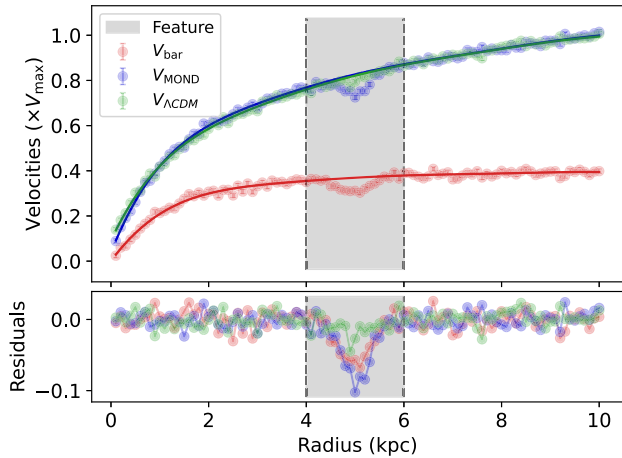


Figure 11. An example of mock data generated with sampling rate $n = 10$ (such that the feature consists of $N = 20$ points) and signal-to-noise ratio $h/\epsilon = 4.0$. In the top panel, the error bars show the generated data [normalized by $V_{\max} \equiv \max(V_{\text{obs}})$], while the solid lines show their corresponding GPR fits, with respect to which residuals are obtained and shown in the bottom panel. The shaded region marks the 4.0–6.0 kpc window, i.e. the feature on which the windowed analysis is performed (see Section 4.5).

of height $h \times V_{\text{bar}}$ (e.g. $h \approx -16$ per cent in NGC 1560, see Fig. 1a). This generates a new V_{obs} , given by

$$\begin{aligned} V'_{\text{obs}} &= \sqrt{V_{\text{DM}}^2 + V_{\text{bar}}^2} = \sqrt{3 + (1+h)^2} \times V_{\text{bar}} \\ &> \sqrt{4 + 2h + h^2/4} \times V_{\text{bar}} = (2 + h/2) \times V_{\text{bar}}. \end{aligned} \quad (14)$$

In particular, $V'_{\text{obs}} - V_{\text{obs}} > h/2 \times V_{\text{bar}}$, thus even in regions dominated by a perfectly smooth halo (such that $V_{\text{obs}} = 2 \times V_{\text{bar}}$), one would still expect a feature in V_{bar} to be reflected in V_{obs} with at least half its original size.

In fact, repeating the above calculation for a general DM halo where $V_{\text{obs}} = M \times V_{\text{bar}}$, one can show that $V'_{\text{obs}} - V_{\text{obs}} > h/M \times V_{\text{bar}}$, i.e. a feature in V_{bar} is always reflected in V_{obs} with at least $1/M$ times its original size. Hence, even with a perfectly smooth DM halo, features in V_{bar} are always reflected in V_{obs} at a reduced, but non-zero height. For example, we saw earlier that a handful of simulated galaxies are visually identified by I. M. Santos-Santos et al. (2015), which all bear strongly correlated features in V_{bar} and V_{obs} , one of which is the galaxy C5. In the top panel of Fig. 15, we show the RCs of C5 as scatter plots, alongside the predictions from MOND (V_{MOND}) and a smooth Λ CDM halo (V_{LCDM} ; specifically one modelled by the NFW profile). Following our general procedure, a GPR is applied (solid lines), and the residuals relative to these fits, i.e. the small-scale fluctuations on each RC, is shown in the bottom panel. We clearly see that while the residuals of V_{MOND} align well with that of V_{bar} , with almost an exact match for the bump at around 10 kpc, the same bump in the residuals of V_{obs} actually replicates that of V_{LCDM} , both at approximately half the height of their counterpart in V_{bar} . Indeed, by plugging in $M \approx 120/60 = 2$ into our calculation above [and following the exact computation shown in equation (14)], we see that, perhaps counter-intuitively, the visually striking feature is nothing but precisely expected from the introduction of a perfectly smooth DM halo. This key argument applies to many of the features we identify, especially where features are located in less DM-dominated regions with $M < 2$.

Secondly, baryons do interact with DM gravitationally, leading to substructures in DM haloes which emerge as correlated features in

RCs. For instance, a recent study by M. Bernet et al. (2025) shows that in a range of state-of-the-art Λ CDM simulations, the introduction of stellar spiral arms generates clear spiral-shaped overdensities in its otherwise smooth DM halo. This gravitational back-reaction may reflect as strongly correlated features in V_{bar} and V_{obs} , even in DM-dominated regions of RCs, recreating Renzo's rule in a purely Λ CDM Universe. Indeed, it would be interesting to apply our analysis on similar numerical simulations in the future.

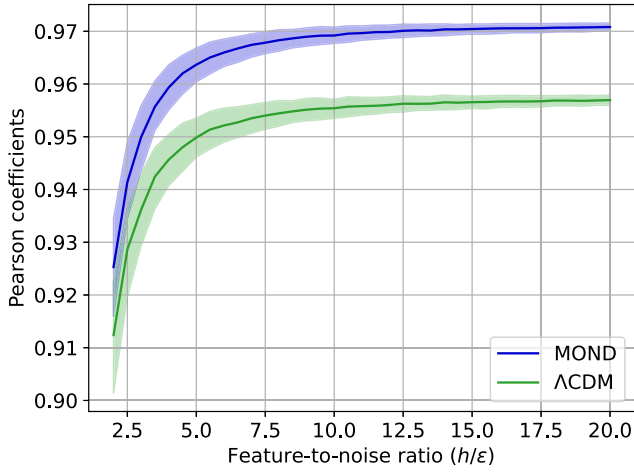
5.2 Interpretation of results

For the first time, we provide a systematic and statistical test of *Renzo's rule* for RCs in both observed and simulated galaxy data. In particular, by considering residuals from GPRs, we compute the Pearson coefficients and DTW costs of small-scale features in V_{obs} and V_{bar} , which are compared to that predicted by MC samples of MOND and Λ CDM; specifically, we assume the simple interpolation function for MOND (see equation 3), and smooth NFW haloes (see equation 4) for Λ CDM.

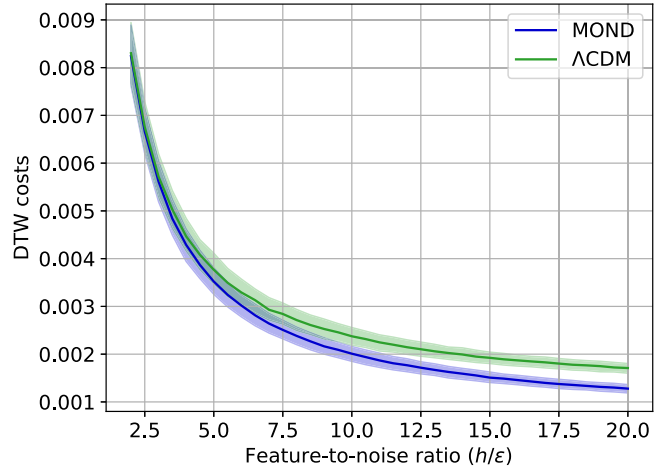
For the dwarf spiral NGC 1560, we find hints of Renzo's rule in data sets from both R. Sanders (2007) and G. Gentile et al. (2010), with a clear feature identified in RCs of the former. Notably, the statistics obtained from both data sets deviate from MOND and Λ CDM expectations, with up to 5σ significance for the RCs from G. Gentile et al. (2010), implying an exceedingly strong correlation of features which seems incompatible with both models. However, we note that points within the 4.2–6.2 kpc window of RCs from G. Gentile et al. (2010) are removed for the GPR, despite our algorithm finding no features with the original fit. While well-motivated by the features identified in Sanders's data set, this likely introduced bias into the statistics obtained by amplifying the residuals within said window. Numerically, note that our analysis only separates the predictions from MOND and Λ CDM to a statistical significance of $S = 1.79\sigma$ at best, with below 1σ in all analyses on RCs from G. Gentile et al. (2010), thus the results obtained are more likely a reflection of overestimated and correlated observational errors in the data, which our feature identification algorithm (Algorithm 1) and MC methods are sensitive to, rather than a clear preference or rejection of either model.

Moreover, the stark difference in both shapes and sizes of the features found between the two datasets is concerning. Upon further investigation, we find that Sanders's RC resembles only the northern (receding) side of the RCs modelled by G. Gentile et al. (2010, see figs 9 and 13). While this does not invalidate Sanders's data as an interesting test for Renzo's rule, the reality of the clear feature identified is disputable. This calls for more refined data of the dwarf spiral, specifically surveys with better-controlled observational uncertainties, before any conclusive claims can be established. Additionally, as will be discussed in Section 5.3, improvements should be made to incorporate strongly correlated uncertainties in the data. Furthermore, these (almost always) non-axisymmetric features also suggests that applying Renzo's rule to a galaxy's full two-dimensional velocity field – along with its corresponding two-dimensional baryonic distribution – may offer deeper insights than analyses based solely on azimuthally averaged RCs.

In other galaxy surveys, we find 25 galaxies from the SPARC data set containing distinct features in their total RC (V_{obs}), but no features are found in any of their baryonic counterparts (V_{bar}). Similarly, we also find no features in any of the galaxies from the LITTLE THINGS survey. For the latter, a simple analysis suggests that features are likely obscured by overestimated errors, which our feature identification algorithm (Algorithm 1) relies on. On the other



(a) Pearson coefficient against feature-to-noise ratio.



(b) Normalised DTW cost against feature-to-noise ratio.

Figure 12. Correlation statistics at $n = 10$ as a function of feature-to-noise ratio (h/ϵ). The bands depict the near-symmetric 1σ spread in correlation statistics between δV_{MOND} and δV_{bar} (labelled MOND), and that between $\delta V_{\text{ΛCDM}}$ and δV_{bar} (labelled Λ CDM).

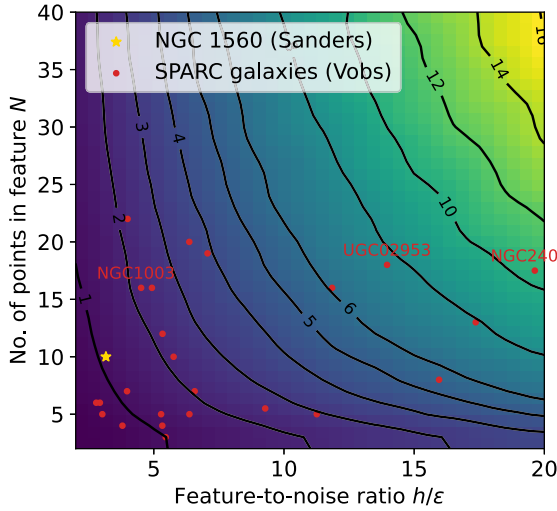
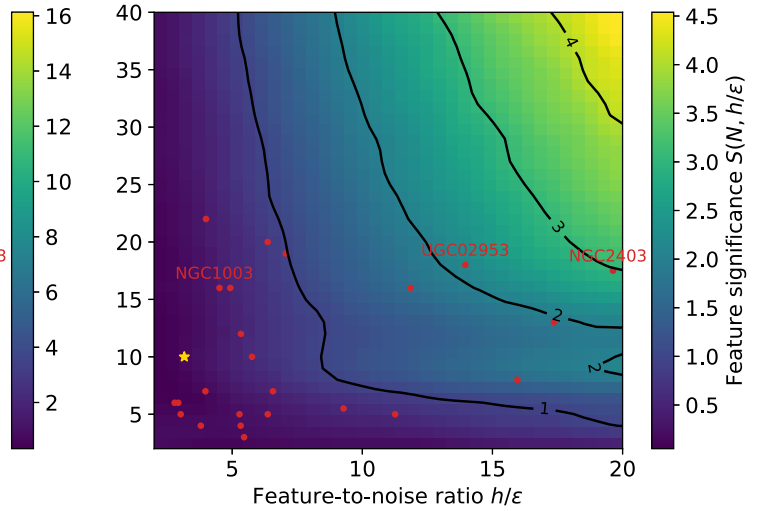
(a) Significance of Pearson coefficients against N and h/ϵ .(b) Significance of DTW costs against N and h/ϵ .

Figure 13. Two-dimensional histograms of feature significance as a function of number of points in each identified feature, $N \equiv 2n$, and signal-to-noise ratio, h/ϵ . The significances are shown as a colour map, ranging from dark blue for $S = 1\sigma$ to yellow for $\max\{S\}$. Contours are also added to highlight the boundaries of constant significance; note that only contours of even significances are shown for $S > 6$ to reduce clutter. We also marked where some of the analysed data lie on these histograms: the feature in Sanders’s NGC 1560 is marked by the star, and features in only V_{obs} of SPARC galaxies are scattered as dots. For SPARC, the galaxies shown in Fig. 5 are tagged, with the exception of UGC 2953, which lies beyond the boundaries with $N = 27$ and $h/\epsilon = 24.2$.

hand, while for most SPARC galaxies, the lack of baryonic features is due to a similar overestimation of (strongly correlated) errors, there are features in V_{obs} which bear no resemblance in V_{bar} (see Fig. 5). These features lead to correlation statistics which are lower than what is expected by both MOND and smooth Λ CDM haloes, and with an average deviation of above 3σ , they appear incompatible with both models. In particular, this result contradicts Renzo’s rule, which states that for each feature in V_{obs} , there should be a feature in V_{bar} (and vice versa).

In fact, upon closer inspection, this problem of excess features in V_{obs} of SPARC galaxies has long been present in the literature, albeit not explicitly mentioned. For example, studies which fit these RCs with the RAR (P. Li et al. 2018), alternative DM haloes (e.g.

Einasto halo fits by Ghari A. et al. 2019), even self-interacting DM (T. Ren et al. 2019) and modified gravity theories (S. Das 2023), all display fits which struggle to reproduce small-scale features in V_{obs} , often involving some of the galaxies presented in Fig. 5. Indeed, a solution to this problem will likely require further in-depth analyses of individual problematic galaxies. That said, our analysis should serve as an interesting test for both new and existing astrophysical theories, which ought to allow sufficient flexibility (e.g. via local variations in DM densities) to generate similar features in V_{obs} (without necessarily correlated features in V_{bar}), while reproducing certain ‘summary’ statistics of tight baryon-DM relations such as the limited intrinsic scatter of the RAR and the baryonic Tully–Fisher relation.

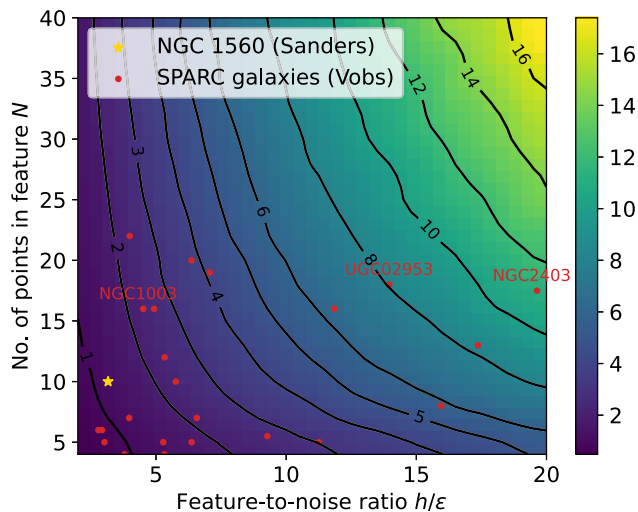
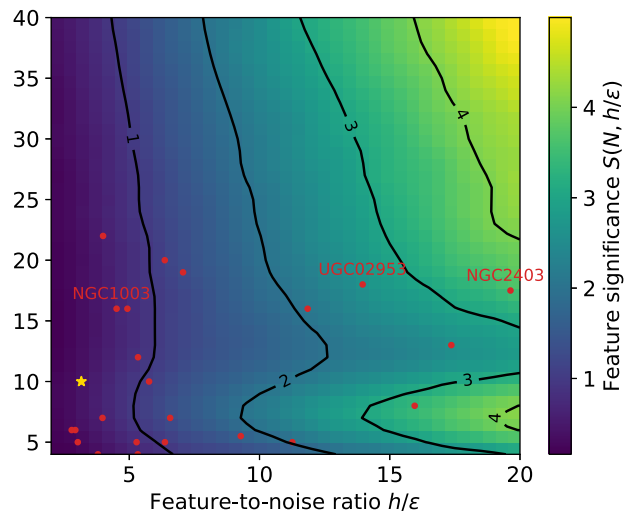

 (a) Significance of Pearson coefficients against N and h/ϵ .

 (b) Significance of DTW costs against N and h/ϵ .

Figure 14. Two-dimensional histograms of feature significance as a function of number of points in each identified feature, $N \equiv 2n$, and signal-to-noise ratio, h/ϵ . Here, significances are calculated on a window (4.0–6.0 kpc) around the artificial feature. All colours and labels are identical to those in Fig. 13. Comparing the two sets of plots, we see that focusing our analyses on the feature window does increase the significances achieved, though not as appreciably as one may naively expect.

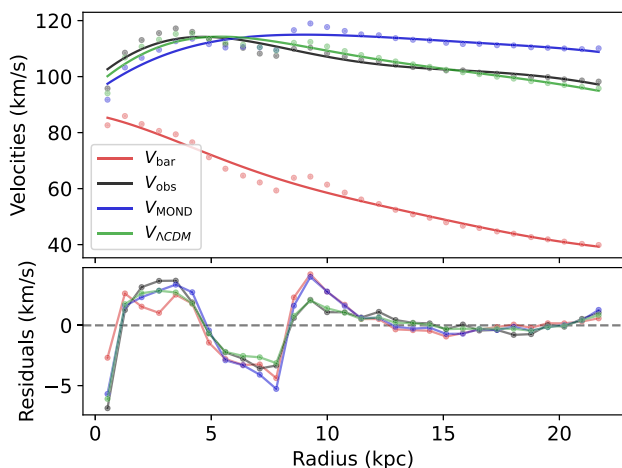


Figure 15. RCs of galaxy C5, one of the few simulated galaxies visually identified by I. M. Santos-Santos et al. (2015) to bear features resembling Renzo's rule. In the top panel, we show the simulated RCs (V_{obs} and V_{bar}), alongside the RCs predicted by MOND (V_{MOND}) and ΛCDM ($V_{\Lambda\text{CDM}}$) given by MCMC fits as scatter plots. A Gaussian process regression is applied (solid lines), which fits through the large scale, overall shape of the RCs. The residuals relative to these fits, i.e. the small-scale fluctuations on each RC, is displayed in the bottom panel. From this and our simple calculation with $M \approx 120/60 = 2$, we see that the visually striking feature at around 10 kpc precisely matches the prediction from superimposing a perfectly smooth DM halo, rather than that from MOND.

As for simulated data, we turn to galaxies from the MaGICC and CLUES hydrodynamical ΛCDM simulations. These data sets are of particular interest since I. M. Santos-Santos et al. (2015) visually identified clear features in the RCs of nine galaxies, resembling Renzo's rule without its explicit implementation, nor that of any closely related phenomena such as the baryonic Tully–Fisher relation. While this appears surprising, we find no evidence that features

in these galaxies correlate at a stronger level than is expected by smooth ΛCDM haloes; in fact, the statistics obtained often agree more with that predicted by ΛCDM than of MOND. Moreover, contrary to intuitive expectations, a simple calculation shows that even with the addition of a perfectly smooth halo (such as one modelled by the NFW profile), features in V_{bar} are expected to reflect in V_{obs} at $1/M \equiv V_{\text{bar}}/V_{\text{obs}}$ times its original height, which appears to be the case for some of the identified features (see Section 5.1).

Using RCs modelled by $y = \arctan x$ with an additional Gaussian dip, our analyses with mock data (Section 4.5) gives a wider perspective of the statistics obtained, and what improvements are needed in future galaxy data for a decisive test of Renzo's rule, specifically one which distinguishes the expected statistics from MOND and smooth ΛCDM haloes to higher significance. Figs 13–14 show that for Pearson coefficients, it is often more important to reduce noise (thus increasing the feature-to-noise ratio) than enhancing sampling rates for data lacking in both aspects (as is the case for NGC 1560). However, we see that there are features found in V_{obs} of SPARC galaxies, such as UGC 2953, NGC 2403, and most notably, UGC 6787, which, if they exist in V_{bar} instead, would distinguish expectations from MOND and ΛCDM to far beyond 5σ significance. Unfortunately, the baryonic feature in NGC 1560 remains the most promising candidate (and indeed one of the most seen in presentations of Renzo's rule), and with our current methods, even with a 4-fold increase in sampling rate, at least a 60 per cent reduction in noise is required to achieve a potentially conclusive 5σ significance (or around 80 per cent if the sampling rate is not drastically enhanced).

A clear issue we have yet to discuss is the lacklustre performance of DTW, as shown in Figs 13–14. As opposed to Pearson coefficients, contours for $S = 5\sigma$ do not even appear on the histograms for DTW. While disappointing, we emphasize that DTW is a flexible overarching framework, and our algorithm defined in Section 3.4.2 is only one of the simplest versions available. For instance, one can define different DTW metrics to that of equation (12), apply larger weights on identified features, modify DTW to account for local gradients and shapes, etc. (for a summary and comparison of different DTW variants, see e.g. A. Lahreche & B. Boucheham

2021). Therefore, our study does not completely rule out DTW as a tool for testing Renzo’s rule, though modifications of which are evidently required for obtaining significant results.

5.3 Caveats and potential improvements

We should once again emphasize that in all results presented, MOND refers specifically to equation (1) together with the simple interpolating function (equation 3), while Λ CDM refers only to smooth DM haloes modelled by the NFW profile (equation 4). In particular, for MOND, M. Milgrom & R. H. Sanders (2008) showed that certain families of IFs can generate shell-like features at specific transition radii, even in the absence of any corresponding structure in V_{bar} . These features manifest as ‘phantom dark matter’, resembling the isolated features identified in V_{obs} of some SPARC galaxies. While such presentations often prefer IFs with a very fast MOND–Newtonian transition – contrary to the gradual transition preferred by the SPARC data set – it is clear that our study does not invalidate MOND in general. Rather, this challenges the validity of the Simple or RAR IF and may even indicate the need for the modified inertia interpretation of MOND; all of these are discussed in detail by H. Desmond (2025) and H. Desmond et al. (2024). Future tests of Renzo’s rule should therefore allow for variation of the IF.

For Λ CDM, by not incorporating any local gravitational interactions between baryons and DM (e.g. spiral arms in M. Bernet et al. 2025), we expect our results to underestimate the correlation statistics expected by more sophisticated Λ CDM calculations, although it remains unlikely that such improved statistics would exceed the existing predictions from MOND. Furthermore, by assuming all DM haloes to be smooth and featureless, it is difficult to explain features in V_{obs} which are not reflected in V_{bar} , such as those found in the SPARC data set. Hence, both our Λ CDM and MOND implementations are inherently smooth, and exclude the small-scale physics required to generate features in V_{obs} in addition to those reflected directly from V_{bar} . Of course, limitations of the (idealized) error models of the data, for example, the disregard of asymmetries, may also lead to unmodelled features.

Throughout our analysis, we have also assumed that all stellar orbits are circular in galaxies. This is a simplification of the true physics involved – it is likely that non-circular motion, e.g. in barred galaxies, can generate RC fluctuations that do not accurately represent true features in the underlying gravitational field (see M. Milgrom & R. H. Sanders 2008 for a more detailed discussion). That said, by comparing to Λ CDM hydrodynamical simulations, I. M. Santos-Santos et al. (2015) points out that most RCs should not be significantly altered by assuming a spherical potential and considering the average mass of spherical shells. Indeed, in most stable, late-type galaxies, such as those contained in the SPARC data base, non-circular motions only manifest as velocity dispersions, rather than significant asymmetries across the disc. Thus, our analysis remains a useful first step towards understanding the physics of small-scale galaxy features.

Based on the methods presented, improvements can still be made in the future without the use of sophisticated modelling or simulations. A common problem in present data is the strongly correlated errors from uncertainties in galaxy parameters, such as distances, inclinations and mass-to-light ratios. This makes it difficult to identify features in RCs, especially in V_{bar} , as is clear from our analyses on SPARC galaxies. To tackle this, it may be necessary to develop new algorithms to extract RCs with more precise uncertainty quantification, including H I surface densities, velocities, and correlations between the various galaxy parameters. This new algorithm should also contain flexible enough models to accurately extract features in

both the surface densities and RCs. Moreover, part of the uncertainties in present data originate from the averaging of approaching and receding sides of each galaxy – indeed, as discussed previously, this is likely responsible for the difference between the RCs extracted by R. Sanders (2007) and G. Gentile et al. (2010). It would be beneficial for future compilations to provide the two sides separately as two sets of RCs, such that our methodology can be applied independently to the better-controlled, and possibly more abundant features.

Alternatively, the problem can also be tackled by modifying Algorithm 1, where instead of treating each data point separately, we evaluate segments of the normalized residual using alternative metrics such as the Mahalanobis distance (P. C. Mahalanobis 1936); this takes into account the covariance of uncertainties, which in turn can be estimated using existing MC realizations from the generation of V_{MOND} and $V_{\Lambda\text{CDM}}$. Note that the covariance structure can vary significantly between different galaxies, and even between different RC components within the same galaxy – indeed, when using Mahalanobis distances, this variability makes it difficult to define a consistent threshold (analogous to T in Algorithm 1) for systematic feature identification, even when allowing separate thresholds for V_{bar} and V_{obs} . To address this, one may need to modify the covariance matrices, for example, by adding small diagonal terms or assuming a minimum uncertainty at each data point, such that a uniform threshold can be applied across more comparable covariances. Of course, to further improve the reliability and accuracy of the algorithm (and related components like the GPR), one could always employ advanced machine learning techniques, such as those frequently used in high energy physics (e.g. for a potentially suitable PYTHON-based algorithm, see L. Vaslin et al. 2023).

Similarly, there are plenty of directions to pursue for improving the obtained correlation statistics. Apart from using other variants of DTW, as previously mentioned, one could, for example, investigate the first and/or second derivatives of the RC residuals. In fact, as part of this study, we did examine the derivatives of RCs using spline fits – a particularly simple but promising technique we came across is the Piecewise Cubic Hermite Interpolating Polynomial (PCHIP). However, due to various challenges such as difficulty in physically interpreting the statistics obtained, we did not pursue this direction fully. That said, future studies can certainly utilize similar techniques to extract more information from both existing and future galaxy data; indeed, it is feasible that one could achieve more significant results by clever manipulation of these higher derivatives alone, without drastic changes to the formulation of Pearson coefficients and DTW presented.

Of course, with all being said, the most obvious path to achieving a definitive test of Renzo’s rule is to bring in galaxy data with much larger baryonic features than those in present data (e.g. comparable to those found in V_{obs} of SPARC galaxies), preferably with small and well-modelled uncertainties, along with high sampling rates around such features.

6 SUMMARY

In this paper, we present a systematic statistical analysis for *Renzo’s rule*, an informal astrophysical phenomenon which until now relied solely on visual inspections of rotation curves. Using residuals from GPR, a simple feature identification algorithm and correlation quantification with Pearson coefficients and DTW, we analyse four sets of galaxy data: the dwarf spiral NGC 1560, the SPARC data base, the LITTLE THINGS survey, and simulated data from the MaGICC and CLUES Λ CDM simulations.

We identify features in NGC 1560 – a prime example for Renzo's rule and MOND – where correlation statistics support Renzo's rule with a slight preference for MOND over smooth Λ CDM haloes. However, all other results suggest that Renzo's rule is not a clear facet of galaxy phenomenology; notably, features identified in RCs of the SPARC data set correlate around 3σ less on average with their baryonic counterparts than is expected by both MOND and Λ CDM, challenging the validity of Renzo's rule. Thus overall, we do not find clear evidence that correlations are present to a greater degree than would be expected in a Λ CDM galaxy formation scenario.

To estimate the data quality required for a robust test of Renzo's rule, we also generate and analyse mock data with features of variable sampling rates and signal-to-noise ratios. We find that in general, Pearson coefficients outperform DTW in differentiating MOND and Λ CDM statistics; and to achieve significant separation between MOND and Λ CDM expectations, it is often more important to reduce observational uncertainties than to enhance the sampling rate. Furthermore, by overlaying features identified in the SPARC data set, we demonstrate that our methodology is capable of testing Renzo's rule decisively, with MOND and Λ CDM statistics distinguishable beyond 5σ significance. Therefore, the lack of features in baryonic rotation curves in present data – partly due to large and correlated uncertainties in galaxy parameters – remains the single most important barrier from a conclusive test of Renzo's rule.

ACKNOWLEDGEMENTS

We thank Fedir Boreiko, Benoit Famaey, Moti Milgrom, Anastasia Ponomareva, Stacy McGaugh, and Nathaniel Starkman for useful inputs and discussion.

EK, TY, and MJ acknowledge support from UKRI Frontiers Research Grant (EP/X026639/1), which was selected by the ERC. EK also acknowledges support from the Oxford University Astrophysics Summer Research Programme. HD was supported by a Royal Society University Research Fellowship (grant no. 211046). RS acknowledges financial support from STFC Grant No. ST/X508664/1 and the Snell Exhibition of Balliol College, Oxford.

We thank Jonathan Patterson for smoothly running the Glamdring Cluster hosted by the University of Oxford, where the data processing was performed.

DATA AVAILABILITY

Data from the SPARC galaxy survey is publicly available at <http://astroweb.cwru.edu/SPARC/>. All other data and computer code underlying this study will be made available upon reasonable request to the corresponding author.

REFERENCES

- Begeman K. G., Broeils A. H., Sanders R. H., 1991, *MNRAS*, 249, 523
 Behroozi P. S., Conroy C., Wechsler R. H., 2010, *ApJ*, 717, 379
 Bernet M. et al., 2025, *A&A*, 697, A214
 Broeils A. H., 1992, *A&A*, 256, 19
 Bullock J. S., Boylan-Kolchin M., 2017, *AR&AA*, 55, 343
 Conroy C., Wechsler R. H., Kravtsov A. V., 2006, *ApJ*, 647, 201
 Das S., 2023, preprint (arXiv:2309.00057)
 Del Popolo A., Le Delliou M., 2017, *Galaxies*, 5, 17
 Desmond H., 2023, *MNRAS*, 526, 3342
 Desmond H., 2025, preprint (arXiv:2505.21638)
 Desmond H., Bartlett D. J., Ferreira P. G., 2023, *MNRAS*, 521, 1817
 Desmond H., Hees A., Famaey B., 2024, *MNRAS*, 530, 1781

© The Author(s) 2025.

Published by Oxford University Press on behalf of Royal Astronomical Society. This is an Open Access article distributed under the terms of the Creative Commons Attribution License (<https://creativecommons.org/licenses/by/4.0/>), which permits unrestricted reuse, distribution, and reproduction in any medium, provided the original work is properly cited.

- Dutton A. A., Macciò A. V., 2014, *MNRAS*, 441, 3359
 Famaey B., Binney J., 2005, *MNRAS*, 363, 603
 Famaey B., McGaugh S. S., 2012, *Liv. Rev. Relativ.*, 15, 31
 Gentile G., Baes M., Famaey B., Van Acoleyen K., 2010, *MNRAS*, 406, 2493
 Ghari A., Famaey B., Laporte C., Haghi H., 2019, *A&A*, 623, A123
 Gottloeber S., Hoffman Y., Yepes G., 2010, in High Performance Computing in Science and Engineering, Garching/Munich 2009, Springer Berlin Heidelberg, Berlin, p. 309
 Homan M. D., Gelman A., 2014, *J. Mach. Learn. Res.*, 15, 1593
 Hunter D. A. et al., 2012, *AJ*, 144, 134
 Kravtsov A. V., Berlind A. A., Wechsler R. H., Klypin A. A., Gottloeber S., Allgood B., Primack J. R., 2004, *ApJ*, 609, 35
 Lahreche A., Boucheham B., 2021, *Int. J. Inf. Appl. Math.*, 4, 56
 Lehmann B. V., Mao Y.-Y., Becker M. R., Skillman S. W., Wechsler R. H., 2016, *ApJ*, 834, 37
 Lelli F., McGaugh S. S., Schombert J. M., 2016, *AJ*, 152, 157
 Lelli F., McGaugh S. S., Schombert J. M., Pawlowski M. S., 2017, *ApJ*, 836, 152
 Li P., Lelli F., McGaugh S., Schombert J., 2018, *A&A*, 615, A3
 Macciò A. V., Dutton A. A., Van Den Bosch F. C., 2008, *MNRAS*, 391, 1940
 Mahalanobis P. C., 1936, *Proc. Indian Natl. Sci. Acad.*, 2, 49
 McGaugh S., Lelli F., Li P., Schombert J., 2019, in *Proc. IAU Symp.* 14, Dynamical Regularities in Rotating Galaxies. Cambridge Univ. Press, Cambridge, p. 144
 McGaugh S. S., 2015, *Can. J. Phys.*, 93, 250
 McGaugh S. S., Schombert J. M., Bothun G. D., de Blok W. J. G., 2000, *ApJ*, 533, L99
 McGaugh S. S., Lelli F., Schombert J. M., 2016, *Phys. Rev. Lett.*, 117, 201101
 Milgrom M., 1983a, *ApJ*, 270, 365
 Milgrom M., 1983b, *ApJ*, 270, 371
 Milgrom M., 1983c, *ApJ*, 270, 384
 Milgrom M., Sanders R. H., 2008, *ApJ*, 678, 131
 Moster B. P., Somerville R. S., Maulbetsch C., van den Bosch F. C., Macciò A. V., Naab T., Oser L., 2010, *ApJ*, 710, 903
 Navarro J. F., Frenk C. S., White S. D. M., 1996, *ApJ*, 462, 563
 Pearson K., Galton F., 1895, *Proc. R. Soc. London*, 58, 240
 Phan D., Pradhan N., Jankowiak M., 2019, preprint (arXiv:1912.11554)
 Rasmussen C. E., Williams C. K. I., 2005, *Gaussian Processes for Machine Learning*. The MIT Press, Cambridge, MA, p. 14
 Read J. I., Iorio G., Agertz O., Fraternali F., 2016, *MNRAS*, 462, 3628
 Read J. I., Iorio G., Agertz O., Fraternali F., 2017, *MNRAS*, 467, 2019
 Reddick R. M., Wechsler R. H., Tinker J. L., Behroozi P. S., 2013, *ApJ*, 771, 30
 Ren T., Kwa A., Kaplinghat M., Yu H.-B., 2019, *Phys. Rev. X*, 9, 031020
 Rubin V. C., Ford W. K. J., Thonnard N., 1980, *ApJ*, 238, 471
 Sancisi R., 2004, in Ryder S. D., Pisano D. J., Walker M. A., Freeman K. C., eds, *Proc. IAU Symp.* 220, The Visible Matter–Dark Matter Coupling. Astron. Soc. Pac., San Francisco, p. 233
 Sanders R., 2007, in *Modified Gravity Without Dark Matter*. Springer, Berlin, p. 375
 Santos-Santos I. M., Brook C. B., Stinson G., Di Cintio A., Wadsley J., Domínguez-Tenreiro R., Gottlöber S., Yepes G., 2015, *MNRAS*, 455, 476
 Stinson G. S., Brook C., Macciò A. V., Wadsley J., Quinn T. R., Couchman H. M. P., 2012, *MNRAS*, 428, 129
 Stiskalek R., Desmond H., 2023, *MNRAS*, 525, 6130
 Stiskalek R., Desmond H., Holvey T., Jones M. G., 2021, *MNRAS*, 506, 3205
 Tully R. B. et al., 2013, *AJ*, 146, 86
 Vale A., Ostriker J. P., 2004, *MNRAS*, 353, 189
 Vaslin L., Calvet S., Barra V., Donini J., 2023, *SciPost Phys. Codebases*, p. 15
 Vintsyuk T. K., 1968, *Cybernetics*, 4, 52
 Vărășteanu A. A. et al., 2025, *MNRAS*, 541, 2366
 Yepes G., Gottlöber S., Hoffman Y., 2014, *New Astron. Rev.*, 58, 1

This paper has been typeset from a $\text{\TeX}/\text{\LaTeX}$ file prepared by the author.