

# Infrared-correlated 31-GHz radio emission from Orion East

C. Dickinson,<sup>1\*</sup> S. Casassus,<sup>2</sup> R. D. Davies,<sup>1</sup> J. R. Allison,<sup>3</sup> R. Bustos,<sup>2,4</sup> K. Cleary,<sup>5</sup>  
R. J. Davis,<sup>1</sup> M. E. Jones,<sup>3</sup> T. J. Pearson,<sup>5</sup> A. C. S. Readhead,<sup>5</sup> R. Reeves,<sup>5</sup>  
A. C. Taylor,<sup>3</sup> C. T. Tibbs<sup>1</sup> and R. A. Watson<sup>1</sup>

<sup>1</sup>*Jodrell Bank Centre for Astrophysics, School of Physics & Astronomy, University of Manchester, Oxford Road, Manchester M13 9PL*

<sup>2</sup>*Departamento de Astronomía, Universidad de Chile, Casilla 36-D, Santiago, Chile*

<sup>3</sup>*Oxford Astrophysics, University of Oxford, Denys Wilkinson Building, Keble Road, Oxford OX1 3RH*

<sup>4</sup>*Departamento de Astronomía, Universidad de Concepción, Casilla 160-C, Concepción, Chile*

<sup>5</sup>*Cahill Center for Astronomy and Astrophysics, Mail Code 249-17, California Institute of Technology, Pasadena, CA 91125, USA*

Accepted 2010 May 25. Received 2010 May 21; in original form 2010 March 15

## ABSTRACT

Lynds dark cloud LDN1622 represents one of the best examples of anomalous dust emission, possibly originating from small spinning dust grains. We present Cosmic Background Imager (CBI) 31-GHz data of LDN1621, a diffuse dark cloud to the north of LDN1622 in a region known as Orion East. A broken ring-like structure with diameter  $\approx 20$  arcmin of diffuse emission is detected at 31 GHz, at  $\approx 20\text{--}30$  mJy beam<sup>-1</sup> with an angular resolution of  $\approx 5$  arcmin. The ring-like structure is highly correlated with far-infrared (FIR) emission at 12–100  $\mu\text{m}$  with correlation coefficients of  $r \approx 0.7\text{--}0.8$ , significant at  $\sim 10\sigma$ . The FIR-correlated emission at 31 GHz therefore appears to be mostly due to radiation associated with dust. Multifrequency data are used to place constraints on other components of emission that could be contributing to the 31-GHz flux. An analysis of the GB6 survey maps at 4.85 GHz yields a  $3\sigma$  upper limit on free–free emission of 7.2 mJy beam<sup>-1</sup> ( $\lesssim 30$  per cent of the observed flux) at the CBI resolution. The bulk of the 31-GHz flux therefore appears to be mostly due to dust radiation. Aperture photometry, at an angular resolution of 13 arcmin and with an aperture of diameter 30 arcmin, allowed the use of *IRAS* maps and the *Wilkinson Microwave Anisotropy Probe* 5-yr *W*-band map at 93.5 GHz. A single modified blackbody model was fitted to the data to estimate the contribution from thermal dust, which amounts to  $\sim 10$  per cent at 31 GHz. In this model, an excess of  $1.52 \pm 0.66$  Jy ( $2.3\sigma$ ) is seen at 31 GHz. Correlations with the *IRAS* 100  $\mu\text{m}$  gave a coupling coefficient of  $18.1 \pm 4.4$   $\mu\text{K}$  (MJy sr<sup>-1</sup>)<sup>-1</sup>, consistent with the values found for LDN1622.

**Key words:** radiation mechanisms: general – ISM: clouds – radio continuum: ISM.

## 1 INTRODUCTION

Anomalous microwave emission (AME) is the name given to excess microwave emission, observed at frequencies in the range  $\sim 10\text{--}60$  GHz, that is strongly correlated with far-infrared (FIR) dust emission (Kogut et al. 1996; Leitch et al. 1997; Finkbeiner et al. 2002; Banday et al. 2003; de Oliveira-Costa et al. 2004; Finkbeiner, Langston & Minter 2004; Watson et al. 2005; Davies et al. 2006; Casassus et al. 2008; Ami Consortium 2009; Dickinson et al. 2009a; Tibbs et al. 2010). This dust-correlated emission is known to be a significant source of contamination for cosmic microwave background (CMB) data, that must be sepa-

rated accurately from the CMB signal (Bennett et al. 2003; Bonaldi et al. 2007; Miville-Deschênes et al. 2008; Gold et al. 2009; Dickinson et al. 2009b). Although there is still some debate about the physical mechanism that is responsible for the emission, the most favoured explanation is in terms of small, rapidly spinning dust grains (Draine & Lazarian 1998a,b). Assuming this is the case, microwave observations of spinning dust represent a new way of studying the properties of interstellar dust grains and its environment within the interstellar medium (ISM) (Ali-Haïmoud, Hirata & Dickinson 2009; Dobler, Draine & Finkbeiner 2009; Ysard, Miville-Deschênes & Verstraete 2010). Accurate observations, at frequencies in the range 5–100 GHz, are now required to confirm spinning dust grains as the source of the anomalous emission and to study the spectrum to infer information about the grains and their environs.

\*E-mail: clive.dickinson@manchester.ac.uk

One of the best examples of spinning dust emission comes from observations of the dark cloud LDN1622 (Finkbeiner et al. 2002; Casassus et al. 2006). LDN1622 is a small ( $\approx 10$  arcmin) dark cloud at the low Galactic latitude edge of the giant molecular cloud Orion B, on the outer edge of Barnard's loop (Maddalena et al. 1986). The spectrum between 1 and 3000 GHz is well fitted by a superposition of optically thin free-free emission, thermal dust at a temperature of  $T \sim 15$  K and a spinning dust component with a peak at  $\sim 30$  GHz (Casassus et al. 2006); at 30 GHz, and on angular scales  $\lesssim 20$  arcmin, the spectrum is dominated by spinning dust emission. Furthermore, correlations with *IRAS* infrared maps indicate a better correlation with the emission from very small grains (VSGs), as expected if the origin of the cm emission is spinning dust.

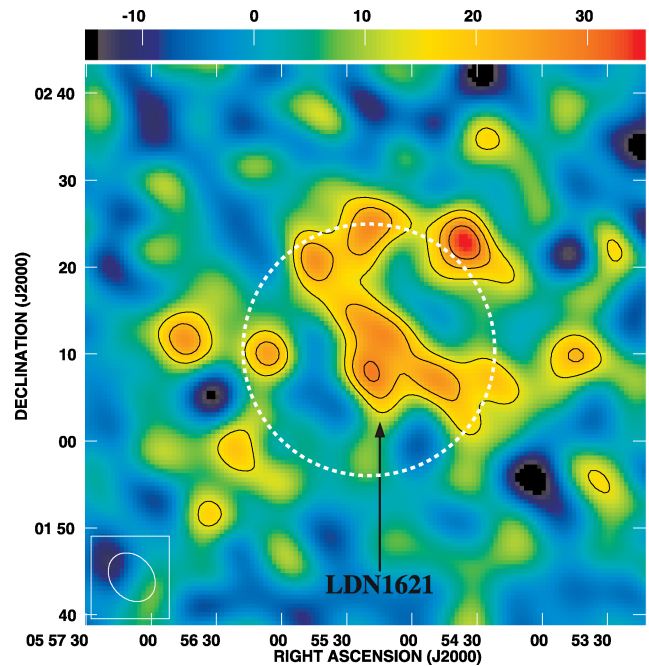
About 25 arcmin to the north-east of LDN1622 lies another dark cloud, LDN1621, which is more diffuse than LDN1622 and forms a broken ring-like structure. These two clouds together were termed as *Orion East* by Herbig & Kameswara Rao (1972) and are thought to lie at a distance of  $\sim 400$  pc, although there is some debate about whether it lies much closer to us at  $\sim 140$  pc (Wilson et al. 2005; Kun et al. 2008). LDN1622 is a higher density dust cloud in which low-mass star formation is beginning, as indicated by the presence of T-Tauri stars (Herbig & Kameswara Rao 1972) but there are no bright OB stars in the vicinity; the ultraviolet (UV) radiation is predominately from the Orion OB1 association. By contrast, LDN1621 is a lower density, ring-like cloud, with no obvious pre-main-sequence stars within (see fig. 6 of Lee et al. 2005).

Here we present 31-GHz data of the area around LDN1621 and compare it with multifrequency data to estimate the contributions of free-free, thermal dust and anomalous dust components. This is compared with previous observations of the LDN1622 dark cloud to the south-west. Section 2 describes the observations and data reduction while Section 3 discusses multifrequency maps of the LDN1621 region. Section 4 gives a quantitative analysis of the contributions from free-free and thermal dust emissions and the possible origin of the 31-GHz excess. Conclusions are given in Section 5.

## 2 OBSERVATIONS AND DATA REDUCTION

The Cosmic Background Imager (CBI; Padin et al. 2002) is a 13-element close-packed interferometer, that operated at the Chajnantor Observatory, in the Atacama desert (Chile), from 1999 to 2008. The CBI was designed to image the CMB anisotropies on scales  $\sim 5$ –30 arcmin, in 10 1-GHz bands at 26–36 GHz. With its high surface brightness sensitivity and calibration stability, it has also been used to image Galactic objects including diffuse dust clouds, supernova remnants, planetary nebulae and H II regions (Casassus et al. 2004, 2006, 2007, 2008; Hales et al. 2004; Dickinson et al. 2006, 2007, 2009a). In 2006–2007, the CBI was fitted with 1.4-m dishes (CBI2), to allow optimal sensitivity on the smallest angular scales accessible by CBI (Taylor et al., in preparation). The larger dishes improved the point-source sensitivity and surface brightness sensitivity over angular scales  $\sim 5$ –20 arcmin. The primary beam is well modelled by a Gaussian with a full width at half-maximum (FWHM) = 28.2 arcmin at 31 GHz up to  $\sim \text{FWHM}/2$ , the region used in the analysis.

During 2007 and 2008, CBI2 observed LDN1621 (J2000: RA  $05^{\text{h}}55^{\text{m}}21^{\text{s}}.6$  Dec.  $+02^{\circ}11^{\text{m}}33^{\text{s}}$ ) over six nights with a combined integration time of 5.7 h on source. A trail field, separated by 8 min in RA, was observed at the same hour angles to allow removal of local correlated signals such as ground spillover. The data analysis follows a similar procedure to that used in CMB data analysis



**Figure 1.** CLEANED 31-GHz map of the LDN1621 region. The ring-like emission from LDN1621 is indicated by the arrow. Contours are at 40, 60 and 80 per cent of the peak brightness ( $35.4 \text{ mJy beam}^{-1}$ ). The synthesized beam ( $6.1 \times 4.8$  arcmin) is shown in the lower left-hand corner. The FWHM of the primary beam is indicated by the thick black dashed line.

(see Sievers et al. 2009 and references therein). The amplitudes and phases were calibrated using short observations of Tau-A, assuming a flux density of 341 Jy at 31 GHz and a spectral index  $\alpha = -0.299$  ( $S \propto \nu^\alpha$ ). The absolute calibration is known to 0.5 per cent, with these values tied to the brightness temperature of Jupiter, assumed to be  $T_J = 146.6 \pm 0.75$  K (Hill et al. 2009). All the data were inspected by eye to remove noisy data and baselines/antennas that were not providing adequate calibration. We assign an overall calibration uncertainty of 5 per cent to account for residual gain variations, ground spillover and pointing errors.

The calibrated visibilities were inverted to form an image, and deconvolved using the CLEAN algorithm (Högbom 1974), using the DIFMAP program (Shepherd 1997). Fig. 1 shows the final CLEANED 31-GHz map of the LDN1621 region. We chose natural weighting of the visibilities to optimize for sensitivity rather than angular resolution. The CLEAN components were primary beam corrected assuming a Gaussian model with  $\text{FWHM} = 28.2 (\nu_{\text{GHz}}/31)$  arcmin. A low gain of 0.03 was used to recover as much extended emission as possible. The synthesized beam is  $6.1 \times 4.8$  arcmin and the noise rms level in the map is  $\approx 6 \text{ mJy beam}^{-1}$ . Spectral indices within the CBI band were not reliable due to the extended nature of LDN1621 and limited signal-to-noise ratio with a small frequency lever arm of 10 GHz.

## 3 DISCUSSION AND COMPARISON WITH MULTIFREQUENCY DATA

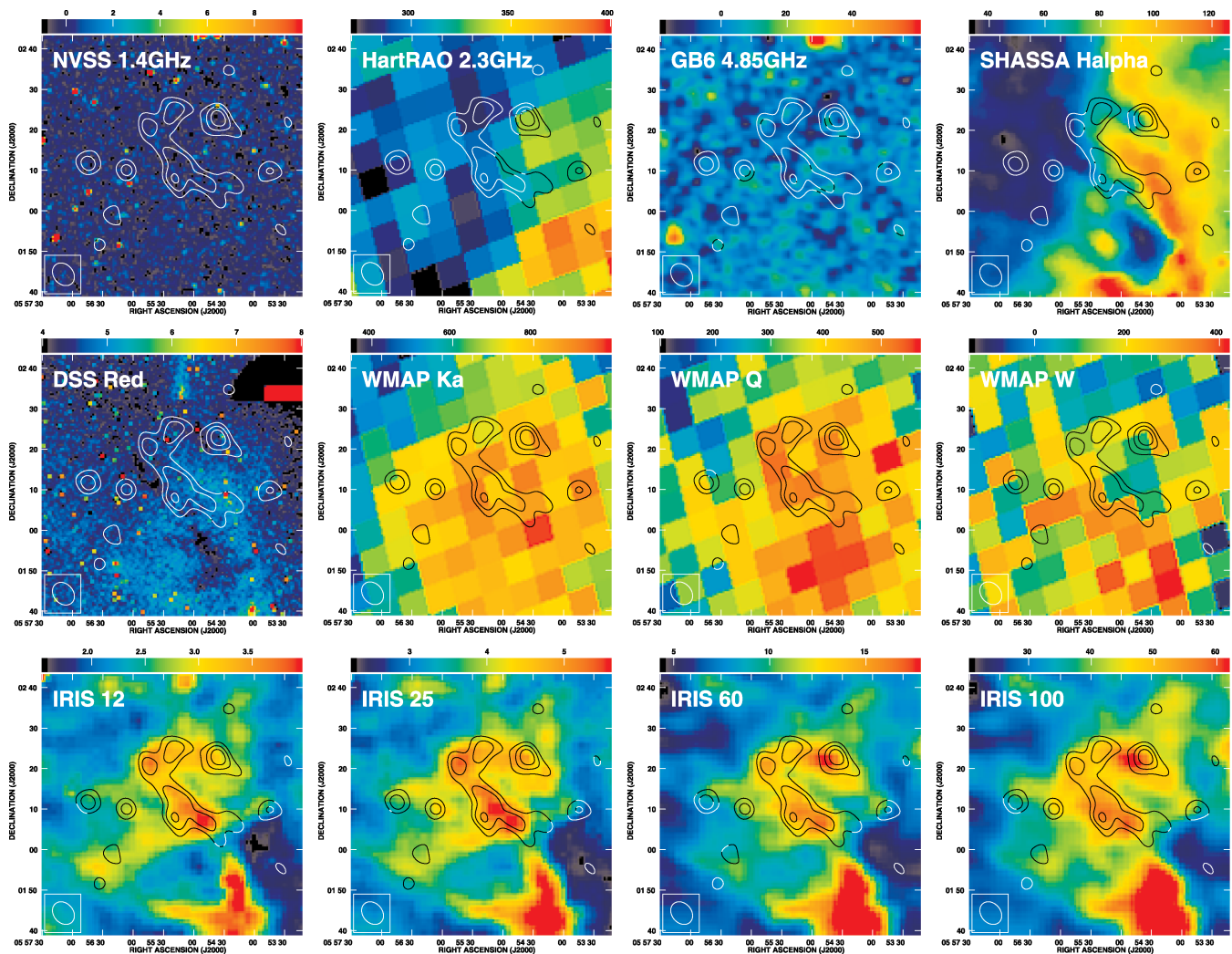
The 31-GHz CBI image (Fig. 1) shows a ring-like structure associated with the dark cloud LDN1621. The ring, of diameter  $\approx 20$  arcmin, is not complete and is not of uniform brightness. The emission has a brightness in the range  $\approx 20$ –30  $\text{mJy beam}^{-1}$ , except for the northern part which is at  $\approx 35 \text{ mJy beam}^{-1}$ . It should be noted that

LDN1621 is not completely within the FWHM of the primary beam at 31 GHz, as indicated in Fig. 1. The northern part of LDN1621 is at  $\approx 15$  arcmin from the pointing centre and is therefore likely to be more affected by primary beam errors and noise. Indeed, the brightest pixel in the image is 16 arcmin from the pointing centre. We found that too many iterations of the CLEAN algorithm could result in additional flux in pixels outside the primary beam FWHM. In particular, for the brightest pixel, we found that the peak brightness could be boosted by up to a factor of  $\approx 1.7$  compared to that presented here. Also, far outside the primary beam, very bright sources could be artificially produced. For this reason, bright pixels that were significantly outside of the primary beam FWHM were not corrected for the primary beam to prevent distortion of the image. Inside the FWHM of the primary beam, such errors are negligible. We also verified the morphology of the 31-GHz image with an image created using earlier CBI1 data, of just 30 min on a single night. Although of limited signal-to-noise ratio, LDN1621 was detected with a similar morphology to the data presented here, and is well within the primary beam FWHM of 45.2 arcmin at 31 GHz. It is also worth noting that LDN1621 is in fact visible on the edge of

the CBI 31-GHz image of LDN1622 presented in Casassus et al. (2006) and is seen to have a similar morphology.

Fig. 2 shows a comparison of the 31-GHz contours (from Fig. 1) with various multifrequency maps. The frequencies, angular resolutions and references are given in Table 1. The best IR data for comparison are the IRIS maps, which are the reprocessed *IRAS* data at 12, 25, 60 and 100  $\mu\text{m}$  (Miville-Deschênes & Lagache 2005). We searched the *Spitzer* data archive for higher resolution IR data, but IRAC/MIPS data of the LDN1622 region only covered up to Dec.  $\approx +02^\circ 10^{\text{m}}$  and therefore did not cover LDN1621. The 31-GHz emission has structure similar to that displayed in the IRIS images in Fig. 2; the IR ring-like structure of LDN1621, seen at 12–100  $\mu\text{m}$ , has a similar morphology to the 31-GHz contours. In particular, the ring is not complete to the west and has enhanced brightness on the north and south sides. The bright cloud to the south-west of LDN1621 is the dark cloud LDN1622, and is not detected in these CBI data because of the primary beam attenuation beyond  $\approx 20$  arcmin from the pointing centre.

The low-frequency radio data at 1.4, 2.3 and 5 GHz (Fig. 2) do not show any evidence of emission associated with LDN1621. The



**Figure 2.** Multifrequency maps of the LDN1621 region, superposed with the CBI 31-GHz contours from Fig. 1. The maps are, with colour scale units in parentheses, as follows: NVSS 1.4 GHz ( $\text{mJy beam}^{-1}$ ), HartRAO 2.3 GHz (mK), GB6 4.85 GHz ( $\text{mJy beam}^{-1}$ ), SHASSA continuum-subtracted  $\text{H}\alpha$  (R), DSS red (arbitrary), WMAP Ka band ( $\mu\text{K}$ ), WMAP Q band ( $\mu\text{K}$ ), WMAP W band ( $\mu\text{K}$ ), IRIS 12  $\mu\text{m}$  ( $\text{MJy sr}^{-1}$ ), IRIS 25  $\mu\text{m}$  ( $\text{MJy sr}^{-1}$ ), IRIS 60  $\mu\text{m}$  ( $\text{MJy sr}^{-1}$ ) and IRIS 100  $\mu\text{m}$  ( $\text{MJy sr}^{-1}$ ). Each map is at the original angular resolution (see Table 1).

**Table 1.** Ancillary data used in this paper. References are (1) Condon et al. (1998); (2) Jonas, Baart & Nicolson (1998); (3) Condon et al. (1994); (4) Hinshaw et al. (2009); (5) Miville-Deschênes & Lagache (2005); (6) Gaustad et al. (2001); (7) McLean et al. (2000).

Data set	Frequency/ wavelength	Beamwidth (FWHM arcmin)	Reference
NVSS	1.4 GHz	0.75	1
HartRAO	2.3 GHz	20	2
GB6	4.85 GHz	3.5	3
<i>WMAP Ka</i>	33.0 GHz	≈37	4
<i>WMAP Q</i>	40.7 GHz	≈29	4
<i>WMAP W</i>	93.5 GHz	≈13	4
IRIS12	12 μm	3.8	5
IRIS25	25 μm	3.8	5
IRIS60	60 μm	4.0	5
IRIS100	100 μm	4.3	5
H $\alpha$	656.2 nm	≈4	6
DSS Red	571 nm	≈0.03	7

relatively high angular resolution (45 arcsec) of the 1.4-GHz data is ideal for identifying extragalactic radio sources in the field that could be confusing the extended Galactic emission. No bright radio sources are detected in the field and no radio sources are coincident with the hotspots seen at 31 GHz down to a level of 2.5 mJy in the NVSS maps (Condon et al. 1998). The majority of extragalactic sources have steeply falling spectra and therefore are unlikely to be detected at 31 GHz. Due to the limited  $u$ ,  $v$  coverage of the NVSS data, extended emission on scales of a few arcmin and larger will be resolved out by the interferometric response of the Very Large Array (VLA), particularly in snap-shot mode. However, the 4.85-GHz GB6 image, at a resolution of 3.5 arcmin, also shows no evidence of emission in the vicinity at the level of  $\gtrsim 8$  mJy beam $^{-1}$ . The GB6 maps are also affected by spatial filtering on scales  $\gtrsim 20$  arcmin (Condon et al. 1994) but remain sensitive to spatial scales comparable to the CBI.

The *Wilkinson Microwave Anisotropy Probe* (*WMAP*) 5-yr maps are the only other data available at frequencies close to 31 GHz. *WMAP* maps at *Ka* band (33 GHz) and *Q* band (40.7 GHz) show enhanced emission on large angular scales, while LDN1621 is barely visible because of the limited angular resolution of the *WMAP* data (Table 1). At *W* band (93.5 GHz), the large-scale emission becomes faint and only LDN1622 is detected. In Section 4.2, we use the *W*-band data to constrain the contribution from thermal dust.

The optical images of the LDN1621 region (Fig. 2) clearly show extended emission in the vicinity of LDN1621 and LDN1622. Most of this will be emission from the bright H $\alpha$  line, which has been separated in the Southern H-Alpha Sky Survey Atlas (SHASSA) continuum-subtracted H $\alpha$  map. The H $\alpha$  line is a good tracer of warm ionized gas and because of its well-known dependence on the electron density ( $I_{\text{H}\alpha} \propto \int n_e^2 dl$ ), it is a good tracer of free-free emission (Dickinson, Davies & Davis 2003). There is a strong gradient of large-scale emission, becoming stronger to the south-west. This is expected since there is a strong UV-radiation field towards the Orion OB1 association in this direction. A large-scale gradient such as this will not be detected by the CBI as it is not sensitive to scales  $\gtrsim 20$  arcmin. An enhancement of H $\alpha$  intensity is visible around LDN1622 while it appears to be absorbing the majority of H $\alpha$  photons from LDN1622, which suggests that LDN1622 is in front of the ionized gas responsible for the H $\alpha$  emission. A similar situation occurs in LDN1621 but the effect is much less pronounced because the H $\alpha$  intensity is less and there is a stronger gradient at

the position of LDN1621. Indeed, some estimates of the distance to LDN1621/1622 put it as close as 120 pc compared to 400 pc for Orion B (Wilson et al. 2005).

## 4 ANALYSIS AND DISCUSSION

### 4.1 Limits on free-free emission

The GB6 4.85-GHz data provide a strong upper limit on the contribution of free-free emission at 31 GHz. Steeper spectrum emission such as synchrotron radiation will be negligible at 31 GHz. No emission is detected within the LDN1621 area. After smoothing to the CBI resolution, the rms noise level at 4.85 GHz is  $\approx 3$  mJy beam $^{-1}$  corresponding to a  $3\sigma$  upper limit of 9 mJy beam $^{-1}$ . At frequencies  $\gtrsim 1$  GHz, free-free emission will be optically thin, except for the densest clouds, such as ultracompact H II regions. We can therefore reliably extrapolate the upper limit to 31 GHz assuming a flux density spectral index ( $S \propto \nu^\alpha$ ) of  $\alpha = -0.12$ , appropriate for optically thin free-free emission (Dickinson et al. 2003). The  $3\sigma$  upper limit to free-free emission at 31 GHz is then 7.2 mJy beam $^{-1}$ . We can therefore be quite confident that the bulk of the 31-GHz emission cannot be due to synchrotron or free-free emission, although a small (up to a maximum of  $\sim 30$  per cent) contribution from free-free contribution cannot be ruled out with the data available.

The level of free-free emission can also be estimated from H $\alpha$  data. If we assume that all of the absorbing dust lies in front of LDN1621, we can estimate the unabsorbed H $\alpha$  intensity by estimating the dust extinction along this line of sight. Along the ring of LDN1621, the total H $\alpha$  intensity is  $I_{\text{H}\alpha} \simeq 40\text{--}70$  R. This is below the background value of  $\sim 100$  R and therefore the CBI will only detect a small fraction of this on scales  $\approx 4\text{--}20$  arcmin. The dust absorption can be estimated using the column-density map,  $D^T$  at 100 μm, of Schlegel, Finkbeiner & Davis (1998) assuming typical ISM conditions and reddening values. If we assume all the absorbing dust is in front of the H $\alpha$ -emitting gas, the corrected H $\alpha$  intensity is given by  $I_{\text{H}\alpha}^{\text{corr}} = I_{\text{H}\alpha} \times 10^{0.0185D^T}$  (Dickinson et al. 2003), where  $D^T$  is the temperature-corrected intensity map in units of MJy sr $^{-1}$ . Along the ring,  $D^T \simeq 50\text{--}60$  MJy sr $^{-1}$ , thus  $I_{\text{H}\alpha}^{\text{corr}} \sim 500$  R. For a typical electron temperature of 7000 K, we expect a 31-GHz brightness temperature of 5.44 μK R $^{-1}$  (Dickinson et al. 2003), or 2.7 mK at 31 GHz. This corresponds to  $\sim 200$  mJy beam $^{-1}$  at 31 GHz at the CBI resolution. However, this estimate is based on assuming all the dust along the line of sight is absorbing and that all the H $\alpha$ -correlated emission is detected by the CBI. We can see from the SHASSA image that the bulk of H $\alpha$  emission is on large scales and thus would not be detected by the CBI. The fluctuations in H $\alpha$  on scales of  $\sim 5$  arcmin are at the 10–20 R level, which corresponds to  $\sim 10\text{--}20$  mJy beam $^{-1}$  at 31 GHz, if all the dust is in front of the H $\alpha$ -emitting gas.

We must therefore rely on the low-frequency data for the strongest constraints on free-free emission on these angular scales. We also note that there is a filament of H $\alpha$  that enters the ring of LDN1621 at a level of  $\simeq 100$  R (see Fig. 2) but is not detected by the CBI. Given the noise level in the 31-GHz image is  $\simeq 6$  mJy beam $^{-1}$ , this could be considered an approximate upper limit on the free-free contribution, which is clearly small on CBI angular scales.

### 4.2 Limits on vibrational (thermal) dust emission

The 31-GHz data are highly correlated with the IR data at 12–100 μm. The IR data are dominated by thermal emission from dust grains heated by UV radiation. The emission is often approximated

**Table 2.** Integrated flux densities for a 30 arcmin diameter aperture centred on LDN1621, at 13 arcmin resolution.

Frequency (GHz)	Flux density (Jy)
31 <sup>a</sup>	1.67 ± 0.66
93.5	1.69 ± 0.62
2997	368 ± 62
4995	155 ± 16
11988	47.8 ± 3.3
24975	26.5 ± 2.3

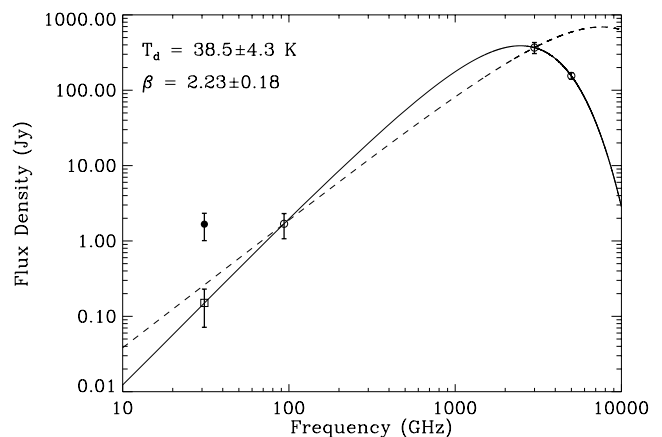
<sup>a</sup>Note that the 31-GHz value was estimated by simulating the 31-GHz map based on the cross-correlation with the 100- $\mu$ m template.

by a modified blackbody function,  $I_d \propto \nu^{\beta+1} B(\nu, T_d)$ , defined by an emissivity index,  $\beta$ , and a blackbody dust temperature,  $T_d$ . With typical ISM dust temperatures in the range  $T_d \sim 10$ –50 K, there is a peak at  $\sim 3000$  GHz (100  $\mu$ m). Typically, the Rayleigh–Jeans tail of this emission dominates down to  $\sim 100$  GHz and becomes negligible at lower frequencies where synchrotron and free–free emission dominate. For dust grains in the ISM, an emissivity index of  $\beta \sim 2$  is typical, although a range of values has been observed, reflecting different grain properties and size populations (see Dupac et al. 2003, and references therein). It is therefore conceivable that the CBI 31-GHz data could simply be the long wavelength tail of the thermal dust.

With no high-resolution IR data available below 3000 GHz, it is somewhat difficult to extrapolate accurately the thermal dust from *IRAS* data alone; we would need to assume a fixed value for the emissivity index. However, the highest frequency channel of *WMAP* data (Hinshaw et al. 2009) at *W* band (93.5 GHz) has a resolution of  $\approx 13$  arcmin and will be useful for placing limits on the level of the thermal dust contribution, at least on these angular scales. Fig. 2 shows the *WMAP* 5-yr 93.5-GHz map. There is no strong emission detected at the location of LDN1621, although LDN1622 is visible to the south-west and there is low-level emission just to the south of LDN1621.

To make a more quantitative estimate of the thermal dust contribution, we smoothed the IRIS maps to a common resolution of 13 arcmin to allow a comparison with the 93.5-GHz data. We then measured the flux density in an aperture of diameter 30 arcmin centred on LDN1621. An estimate of the background level was estimated from an equivalent aperture placed in the top right-hand corner of the image (RA 05<sup>h</sup>53<sup>m</sup>14<sup>s</sup>, Dec. +02°33<sup>m</sup>18<sup>s</sup>) and subtracted from the LDN1621 aperture. Errors were derived from the rms fluctuations in the map. The results are given in Table 2. To obtain an equivalent 31-GHz value, we need to account for flux that has been lost due to the incomplete  $u, v$  coverage of the CBI observations. We therefore estimated the flux density based on the map at 100  $\mu$ m, scaled to 31 GHz via the correlation coefficient derived in Section 4.3 of  $18.1 \pm 4.0 \mu\text{K} (\text{MJy sr}^{-1})^{-1}$ ; note that this is equivalent to calculating the amount of flux loss based on the 100  $\mu$ m morphology and correcting the CBI observed integrated flux density. The aperture analysis yielded an integrated flux density of  $1.67 \pm 0.66$  Jy at 31 GHz. The error includes the rms from the sky and the error in the correlation coefficient.

The spectrum based on the aperture analysis is shown in Fig. 3. We fitted a modified blackbody curve to the 93.5-, 2997- and 4995-GHz data points only. The higher frequency data points (12/25  $\mu$ m)



**Figure 3.** Spectrum of LDN1621 for 13 arcmin resolution data, within a 30 arcmin aperture (see text). The solid line represents the best-fitting modified blackbody curve using the 93.5-, 2997- and 4995-GHz data points. The predicted 31-GHz flux density is shown as an open square. The actual observed value (estimated via cross-correlation with the 100- $\mu$ m map; see text) is shown as a filled circle. The dashed line is for a fit where the emissivity index is fixed at  $\beta = +1.7$ .

do not give a good fit to such a simple model because the grains are not in thermal equilibrium with the radiation field and there are emission lines (ionic and polycyclic aromatic hydrocarbon) within the 12/25  $\mu$ m passbands of *IRAS*. We do not consider the free–free component here because the GB6 4.85-GHz data are not reliable when integrating over regions  $\gtrsim 20$  arcmin. The best-fitting model provides a good fit to the data with  $T_d = 38.5 \pm 4.3$  K and  $\beta = 2.23 \pm 0.18$ . The dust temperature is somewhat higher than expected for a dark cloud; we may be seeing the effects of the local diffuse ISM in the region which may be warmer than the dust grains truly associated with LDN1621. The coupling coefficient is close to the expected value, and is constrained mostly by the *W*-band data point. We also tried fixing the coupling coefficient and/or emissivity index to see if an adequate fit could be found but with a flatter index. However, it is not possible to find a different best fit to all three data points with just a single dust component. An example is shown in Fig. 3 where the emissivity index was fixed at  $\beta = +1.7$ ; the best fit is clearly not consistent with the data and the excess at 31 GHz still remains. However, we do note that multiple dust components could, in principle, still contribute at 31 GHz. An example would be a colder ( $T_d \lesssim 10$  K) component, yet it cannot be dominant since the total emission must remain consistent with the 93.5-GHz data point. High-sensitivity, high-resolution data in the range  $\sim 100$ –1000 GHz, such as those to come from *Planck* (Tauber et al. 2010), are required to rule this out and to obtain precise values for the thermal dust contribution.

### 4.3 Anomalous microwave emission

In Sections 4.1 and 4.2, we used multifrequency data to place limits on free–free and thermal dust emission in LDN1621 at 31 GHz, as observed by the CBI. The bulk of the emission at 31 GHz appears to be anomalous in that it cannot be easily explained by the usual diffuse components of the ISM at radio/microwave frequencies. Extrapolating the best-fitting thermal dust model curve to 31 GHz (Fig. 3), gives a predicted 31-GHz flux density of  $0.151 \pm 0.079$  Jy. This is well below the estimated true value at 31 GHz of  $1.67 \pm 0.66$  Jy. There is therefore an excess of  $1.52 \pm 0.66$  Jy, which is significant at the  $2.3\sigma$  level. For a fixed emissivity index,

$\beta = +1.5$ , the significance reduces to  $1.8\sigma$ . For an extreme value of  $\beta = +1.0$ , the flattest value that is expected on theoretical grounds, the significance is just  $0.3\sigma$ . High-frequency data ( $\nu \gtrsim 100$  GHz), such as those expected from the *Planck* satellite, will be crucial in determining the contribution from thermal dust emission.

A number of possibilities exist to explain the excess 31-GHz emission including electro-dipole radiation from spinning dust grains (Draine & Lazarian 1998a,b; Ali-Haïmoud et al. 2009; Ysard et al. 2010), magnetodipole radiation (Draine & Lazarian 1999), free-free from hot  $T \sim 10^6$  K gas (Leitch et al. 1997), flat-spectrum (hard) synchrotron (Bennett et al. 2003) and low-level solid state structural transitions (Jones 2009). With the current radio/IR data, it is somewhat difficult to confidently distinguish between these possibilities. In other clouds, and in the diffuse ISM, the most favoured explanation is in terms of spinning dust grains.

Several authors have used correlation analyses against dust templates to try to isolate the type of dust grains that correlate best with the radio data (e.g. de Oliveira-Costa et al. 2002; Casassus et al. 2006; Ami Consortium et al. 2009; Ysard et al. 2010). It is clear from Fig. 2 that there is a good correlation with the IRIS maps at 12–100  $\mu\text{m}$ , suggesting a possible dust origin. We calculated Pearson's correlation coefficient,  $r$ , between the CBI 31-GHz map and IRIS data at 12, 25, 60 and 100  $\mu\text{m}$ . We take into account the spatial filtering of the CBI instrument by simulating CBI observations, based on the real  $u, v$  data with IRIS maps as inputs, and making CLEANED maps in the same way as for the CBI data. Errors were estimated by using Fisher's  $r$  to  $z$  transformation and calculating the 68 per cent confidence interval Fisher (1915). Since there is some concern regarding the primary beam correction beyond FWHM/2, we computed the correlation for different sized regions. Table 3 gives the  $r$  correlation coefficients for four regions. Given the noise level, and uncertainty in the primary beam correction in the outer regions, the 31 GHz–IR correlation is remarkably high with  $r \sim 0.6$ – $0.8$ ; significant at  $\sim 10\sigma$ . For spinning dust, we would expect a better correlation with shorter IR wavelengths ( $\sim 10$ – $30$   $\mu\text{m}$ ) because these are dominated by the smaller (and generally warmer) dust grains which are responsible for the bulk of spinning dust emission (Ali-Haïmoud et al. 2009; Ysard et al. 2010). Longer wavelengths ( $\gtrsim 100$   $\mu\text{m}$ ) are dominated by larger (and typically cooler) grains. We find no strong preference for a particular IR template or short versus long IR wavelengths. The exception is for the 10 arcmin region centred in the middle of the LDN1621 ring, where there is a slightly better correlation with short (12/25  $\mu\text{m}$ ) wavelengths ( $r = 0.82 \pm 0.06$ ) compared with longer (60/100  $\mu\text{m}$ ) wavelengths ( $r = 0.69 \pm 0.09$ ). This is consistent with the expectation for spinning dust.

**Table 3.** Pearson correlation coefficients between the 31-GHz data and IRIS maps at 12, 25, 60 and 100  $\mu\text{m}$ . These were calculated over circular regions with radii given in the first column. The regions are centred on the middle of the image except for the aperture marked with an asterisk (\*) which was centred in the middle of the LDN1621 ring feature at RA  $05^{\text{h}} 54^{\text{m}} 46^{\text{s}}$ , Dec.  $+02^{\circ} 14^{\text{m}} 03^{\text{s}}$ .

Radius (arcmin)	12 $\mu\text{m}$	25 $\mu\text{m}$	60 $\mu\text{m}$	100 $\mu\text{m}$
10*	$0.78 \pm 0.09$	$0.85 \pm 0.07$	$0.72 \pm 0.11$	$0.62 \pm 0.15$
10	$0.75 \pm 0.11$	$0.70 \pm 0.12$	$0.75 \pm 0.11$	$0.71 \pm 0.12$
15	$0.58 \pm 0.10$	$0.63 \pm 0.09$	$0.66 \pm 0.09$	$0.57 \pm 0.10$
20	$0.63 \pm 0.07$	$0.68 \pm 0.07$	$0.70 \pm 0.06$	$0.62 \pm 0.08$

A number of authors have calculated the coupling coefficient between IR templates and the radio data. The coefficient for 100  $\mu\text{m}$ , sometimes referred to as the emissivity, is  $\sim 10$   $\mu\text{K} (\text{MJy sr}^{-1})^{-1}$  in the diffuse ISM with a scatter of a factor of  $\sim 2.5$  (Banday et al. 2003; Davies et al. 2006). In LDN1622, the coupling coefficient is  $21.3 \pm 0.6$   $\mu\text{K} (\text{MJy sr}^{-1})^{-1}$  while H II regions are typically at  $\lesssim 5$   $\mu\text{K} (\text{MJy sr}^{-1})^{-1}$  (Dickinson et al. 2006, 2007, 2009a; Scaife et al. 2008). In LDN1621, taking no account of any free-free contribution, the coupling coefficient is 16–22  $\mu\text{K} (\text{MJy sr}^{-1})^{-1}$  depending on which part of the image is used. For a 10 arcmin radius circle centred in the middle of LDN1621, where the spatial correlation is highest (Table 3), the coefficient is  $18.1 \pm 4.0$   $\mu\text{K} (\text{MJy sr}^{-1})^{-1}$ . Assuming there is no free-free contribution, which would reduce the coefficient, LDN1621 appears to emit at the same level as LDN1622 compared to the 100  $\mu\text{m}$  template, and a factor of  $\approx 2$  more than the average value found in the diffuse ISM.

## 5 CONCLUSIONS

LDN1621 is a region of diffuse emission  $\approx 25$  arcmin to the north of LDN1622. Observations with the CBI at 31 GHz show a broken ring-like structure that is strongly correlated with FIR emission at 12–100  $\mu\text{m}$ , with Pearson correlation coefficients in the range  $\approx 0.6$ – $0.8$ . Optical and H $\alpha$  data show absorption of a strong background of emission from warm ionized gas in the eastern arm of Orion. This suggests that LDN1621 and LDN1622 are in the foreground of Orion (at a distance of  $\sim 500$  parsec), possibly as close as 120 pc (Wilson et al. 2005). No H $\alpha$  emission, associated directly with LDN1621, is seen. This suggests that LDN1621 itself is not emitting significant free-free emission, although the effects of dust extinction do not allow a strong constraint to be placed. Low-frequency radio data also do not show evidence of diffuse emission associated with LDN1621. The 31-GHz emission is at  $\approx 20$ – $30$  mJy beam $^{-1}$  while an analysis of the GB6 map at 4.85 GHz provides a strong ( $3\sigma$ ) upper limit of 7.2 mJy beam $^{-1}$  at 31 GHz for free-free emission. The FIR-correlated emission at 31 GHz therefore appears to be mostly due to radiation associated with dust.

*IRAS* data alone do not allow a reliable extrapolation of the Rayleigh–Jeans thermal dust tail to 31 GHz. *WMAP* data at 93.5 GHz combined with *IRAS* data allowed the flux density to be estimated in an aperture of diameter 30 arcmin at an angular resolution of 13 arcmin. A single modified blackbody indicates that the thermal dust is  $\sim 10$  per cent of the total 31-GHz flux, corresponding to an excess of  $1.52 \pm 0.66$  Jy ( $2.3\sigma$ ). The dust-correlated emission has a coupling coefficient, relative to 100  $\mu\text{m}$ , of  $18.1 \pm 4.4$   $\mu\text{K} (\text{MJy sr}^{-1})^{-1}$ , consistent with that observed from LDN1622.

Orion East (consisting of both LDN1621 and LDN1622) appear to be part of the same system of dust clouds, emitting significant anomalous emission at frequencies  $\sim 30$  GHz. Spinning dust is an obvious candidate for the physical mechanism responsible for the bulk of the emission. High-sensitivity data, covering a wide range of frequencies ( $\sim 5$ – $300$  GHz), is required to study such clouds in more detail. Data from the *Planck* satellite will be particularly useful in constraining the Rayleigh–Jeans dust tail, which may be responsible for a significant fraction of the 31 GHz if the emissivity index flattens at longer wavelengths.

## ACKNOWLEDGMENTS

We thank the anonymous referee for providing suggestions that have improved the clarity of the paper. This work was supported by the Strategic Alliance for the Implementation of New Technologies

(SAINT – see <http://www.astro.caltech.edu/chajnantor/saint/index.html>) and we are most grateful to the SAINT partners for their strong support. We gratefully acknowledge support from the Kavli Operating Institute and thank B. Rawn and S. Rawn Jr. The CBI was supported by NSF grants 9802989, 0098734 and 0206416, and a Royal Society Small Research Grant. We are particularly indebted to the engineers who maintained and operated the CBI: Cristóbal Achermann, José Cortés, Cristóbal Jara, Nolberto Oyarace, Martin Shepherd and Carlos Verdugo. CD acknowledges an STFC Advanced Fellowship and ERC grant under the FP7. We acknowledge the use of the Legacy Archive for Microwave Background Data Analysis (LAMBDA). Support for LAMBDA is provided by the NASA Office of Space Science. We used data from the Southern H-Alpha Sky Survey Atlas (SHASSA), which is supported by the National Science Foundation.

## REFERENCES

- Ali-Haïmoud Y., Hirata C. M., Dickinson C., 2009, *MNRAS*, 395, 1055  
 Ami Consortium, 2009, *MNRAS*, 394, L46  
 Banday A. J., Dickinson C., Davies R. D., Davis R. J., Górski K. M., 2003, *MNRAS*, 345, 897  
 Bennett C. L. et al., 2003, *ApJS*, 148, 97  
 Bonaldi A., Ricciardi S., Leach S., Stivoli F., Baccigalupi C., de Zotti G., 2007, *MNRAS*, 382, 1791  
 Casassus S., Readhead A. C. S., Pearson T. J., Nyman L.-Å., Shepherd M. C., Bronfman L., 2004, *ApJ*, 603, 599  
 Casassus S., Cabrera G. F., Förster F., Pearson T. J., Readhead A. C. S., Dickinson C., 2006, *ApJ*, 639, 951  
 Casassus S., Nyman L.-Å., Dickinson C., Pearson T. J., 2007, *MNRAS*, 382, 1607  
 Casassus S. et al., 2008, *MNRAS*, 391, 1075  
 Condon J. J., Broderick J. J., Seielstad G. A., Douglas K., Gregory P. C., 1994, *AJ*, 107, 1829  
 Condon J. J., Cotton W. D., Greisen E. W., Yin Q. F., Perley R. A., Taylor G. B., Broderick J. J., 1998, *AJ*, 115, 1693  
 Davies R. D., Dickinson C., Banday A. J., Jaffe T. R., Górski K. M., Davis R. J., 2006, *MNRAS*, 370, 1125  
 de Oliveira-Costa A. et al., 2002, *ApJ*, 567, 363  
 de Oliveira-Costa A., Tegmark M., Davies R. D., Gutiérrez C. M., Lasenby A. N., Rebolo R., Watson R. A., 2004, *ApJ*, 606, L89  
 Dickinson C., Davies R. D., Davis R. J., 2003, *MNRAS*, 341, 369  
 Dickinson C., Casassus S., Pineda J. L., Pearson T. J., Readhead A. C. S., Davies R. D., 2006, *ApJ*, 643, L111  
 Dickinson C., Davies R. D., Bronfman L., Casassus S., Davis R. J., Pearson T. J., Readhead A. C. S., Wilkinson P. N., 2007, *MNRAS*, 379, 297  
 Dickinson C. et al., 2009a, *ApJ*, 690, 1585  
 Dickinson C. et al., 2009b, *ApJ*, 705, 1607  
 Dobler G., Draine B., Finkbeiner D. P., 2009, *ApJ*, 699, 1374  
 Draine B. T., Lazarian A., 1998a, *ApJ*, 494, L19  
 Draine B. T., Lazarian A., 1998b, *ApJ*, 508, 157  
 Draine B. T., Lazarian A., 1999, *ApJ*, 512, 740  
 Dupac X. et al., 2003, *A&A*, 404, L11  
 Finkbeiner D. P., Schlegel D. J., Frank C., Heiles C., 2002, *ApJ*, 566, 898  
 Finkbeiner D. P., Langston G. I., Minter A. H., 2004, *ApJ*, 617, 350  
 Fisher R. A., 1915, *Biometrika*, 10, 507  
 Gaustad J. E., McCullough P. R., Rosing W., Van Buren D., 2001, *PASP*, 113, 1326  
 Gold B. et al., 2009, *ApJS*, 180, 265  
 Hales A. S. et al., 2004, *ApJ*, 613, 977  
 Herbig G. H., Kameswara Rao N., 1972, *ApJ*, 174, 401  
 Hill R. S. et al., 2009, *ApJS*, 180, 246  
 Hinshaw G. et al., 2009, *ApJS*, 180, 225  
 Högbom J. A., 1974, *A&AS*, 15, 417  
 Jonas J. L., Baart E. E., Nicolson G. D., 1998, *MNRAS*, 297, 977  
 Jones A. P., 2009, *A&A*, 506, 797  
 Kogut A., Banday A. J., Bennett C. L., Gorski K. M., Hinshaw G., Smoot G. F., Wright E. I., 1996, *ApJ*, 464, L5  
 Kun M., Balog Z., Mizuno N., Kawamura A., Gáspár A., Kenyon S. J., Fukui Y., 2008, *MNRAS*, 391, 84  
 Lee H.-T., Chen W. P., Zhang Z.-W., Hu J.-Y., 2005, *ApJ*, 624, 808  
 Leitch E. M., Readhead A. C. S., Pearson T. J., Myers S. T., 1997, *ApJ*, 486, L23  
 Maddalena R. J., Morris M., Moscowitz J., Thaddeus P., 1986, *ApJ*, 303, 375  
 McLean B. J., Greene G. R., Lattanzi M. G., Pirenne B., 2000, in Manset N., Veillet C., Crabtree D., eds, *ASP Conf. Ser. Vol. 216, Astronomical Data Analysis Software and Systems IX*. Astron. Soc. Pac., San Francisco, p. 145  
 Miville-Deschênes M.-A., Lagache G., 2005, *ApJS*, 157, 302  
 Miville-Deschênes M.-A., Ysard N., Lavabre A., Ponthieu N., Macías-Pérez J. F., Aumont J., Bernard J. P., 2008, *A&A*, 490, 1093  
 Padin S. et al., 2002, *PASP*, 114, 83  
 Scaife A. M. M. et al., 2008, *MNRAS*, 385, 809  
 Schlegel D. J., Finkbeiner D. P., Davis M., 1998, *ApJ*, 500, 525  
 Shepherd M. C., 1997, in Hunt G., Payne H. E., eds, *ASP Conf. Ser. Vol. 125, Astronomical Data Analysis Software and Systems VI*. Astron. Soc. Pac., San Francisco, p. 77  
 Sievers J. L. et al., 2009, *ApJ*, submitted (arXiv:0901.4540)  
 Tauber J. et al., 2010, *A&A*, submitted  
 Tibbs C. T. et al., 2010, *MNRAS*, 402, 1969  
 Watson R. A., Rebolo R., Rubiño-Martín J. A., Hildebrandt S., Gutiérrez C. M., Fernández-Cerezo S., Hoyland R. J., Battistelli E. S., 2005, *ApJ*, 624, L89  
 Wilson B. A., Dame T. M., Masheder M. R. W., Thaddeus P., 2005, *A&A*, 430, 523  
 Ysard N., Miville-Deschênes M. A., Verstraete L., 2010, *A&A*, 509, L1

This paper has been typeset from a  $\text{\TeX}/\text{\LaTeX}$  file prepared by the author.