

Transposon mutagenesis screen in *Klebsiella pneumoniae* identifies genetic determinants required for growth in human urine and serum

Reviewed Preprint

Revised by authors after peer review.

About eLife's process

Reviewed preprint version 2

April 29, 2024 (this version)

Reviewed preprint version 1


June 30, 2023

Posted to preprint server

June 1, 2023


Sent for peer review

May 8, 2023

Jessica Gray, Von Vergel L Torres, Emily CA Goodall, Samantha A McKeand, Danielle Scales, Christy Collins, Laura Wetherall, Zheng Jie Lian, Jack A Bryant, Matthew T Milner, Karl A Dunne, Chris Icke, Jessica L Rooke, Thamarai Schneiders, Peter A Lund, Adam F Cunningham, Jeffrey A Cole, Ian R Henderson 

Institute for Molecular Bioscience, University of Queensland, St. Lucia, Queensland, Australia • Institute of Microbiology and Infection, University of Birmingham, Birmingham, United Kingdom • Division of Infection Medicine, University of Edinburgh, Edinburgh, United Kingdom • Institute of Immunology and Immunotherapy, University of Birmingham, Birmingham, United Kingdom

 https://en.wikipedia.org/wiki/Open_access

 Copyright information

Abstract

Klebsiella pneumoniae is a global public health concern due to the rising myriad of hypervirulent and multi-drug resistant clones both alarmingly associated with high mortality. The molecular microbial genetics underpinning these recalcitrant *K. pneumoniae* infections is unclear, coupled with the emergence of lineages resistant to nearly all present day clinically important antimicrobials. In this study, we performed a genome-wide screen in *K. pneumoniae* ECL8, a member of the endemic K2-ST375 pathotype most often reported in Asia, to define genes essential for growth in a nutrient-rich laboratory medium (Luria-Bertani medium), human urine and serum. Through transposon directed insertion-site sequencing (TraDIS), a total of 427 genes were identified as essential for growth on LB agar, whereas transposon insertions in 11 and 144 genes decreased fitness for growth in either urine or serum, respectively. These studies provide further knowledge on the genetics of this pathogen but also provide a strong impetus for discovering new antimicrobial targets to improve current therapeutic options for *K. pneumoniae* infections.

eLife assessment

This **valuable** study is of relevance for those interested in the mechanism required for infections of humans by *Klebsiella pneumoniae*. The authors apply TraDIS (high-density TnSeq) to *K. pneumoniae* with the goal of identifying genes required for survival under various infection-relevant conditions and the gene sets identified, together with the raw sequence data, will be resources for the *Klebsiella* research community. The evidence to support the lists of essential and conditionally-essential genes is **convincing**. The study provides strong evidence that some genes are conditionally essential in urine because of iron limitation, but there is less mechanistic insight for genes that are conditionally essential in serum.

Introduction

Klebsiella pneumoniae are Gram-negative bacteria found ubiquitously in natural and man-made environments (1–3). In immunocompromised patients, and those with co-morbidities such as diabetes or alcoholism, *K. pneumoniae* can colonize multiple body sites causing a diverse array of infections ranging from life-threatening pneumonia, urinary tract infections (UTIs), and bacteremia (4–8). *K. pneumoniae* is a frequently reported multidrug-resistant (MDR) pathogen isolated from nosocomial settings. Such infections have generally higher mortality rates and require longer treatment regimens and hospital stays, placing a significant burden on healthcare providers (9, 10). Of most concern is resistance to β -lactam antibiotics such as penicillin, aztreonam, and extended-spectrum cephalosporins, by horizontally acquired plasmid-mediated β -lactamases (11). While combined antibiotic therapies have been deployed in the clinic, the emergence of pandrug-resistant strains has created an urgency to develop new and efficient approaches to treat *K. pneumoniae* infections (12–14). The identification of genetic determinants essential for growth and those required for survival of *K. pneumoniae in vivo* may help elucidate novel therapeutic targets (15, 16).

Recent large scale phylogenetic investigations have suggested that distinct lineages of *K. pneumoniae* exist in clinical and environmental settings (17). Furthermore, two clinical pathotypes of *K. pneumoniae* have emerged: classical and hypervirulent. While the full repertoire of genetic factors required for *K. pneumoniae* virulence remains unclear, various studies have highlighted the importance of genes involved in adhesion, iron acquisition, capsulation and cell envelope biogenesis (18). Nevertheless, for both classical and hypervirulent *K. pneumoniae* strains, the ability to colonize the urinary tract and survive in the bloodstream are essential pathogenic traits and are dependent on a large and diverse range of virulence factors (19). Indeed, previous studies demonstrated that lipopolysaccharide (O-) (9 serotypes) and capsular polysaccharide (K-) antigens (79 serotypes) contribute to the resistance of serum-mediated killing and antiphagocytosis (20, 21). However, prior genetic screens have revealed that serum-resistance in Gram-negative bacteria is an intricate phenotype defined by a multitude of factors (the serum resistome) (22–26). A recent study of *K. pneumoniae* identified 93 different genes associated with serum resistance across four distinct strains but found that only three genes (*lpp*, *arnD*, and *rfaH*) played a role in all strains. These data hint that multiple mechanisms of serum resistance may exist in *Klebsiella* lineages. In contrast, the full repertoire of genes required for growth of *K. pneumoniae* in the urinary tract (the urinome) has not been defined.

To define the genetic basis of the *K. pneumoniae* urinome and serum resistome, we used Transposon Insertion Sequencing (TIS), also referred to as Transposon Directed Insertion-site Sequencing (TraDIS). TraDIS is a genome-wide screening technique that has been widely used to identify genes essential for bacterial growth and to discover conditionally essential genes under physiologically relevant conditions (27–37). In this study, we generated a highly saturated transposon library within *K. pneumoniae* ECL8, a member of the K2-ST375 phylogenetic lineage that includes hypervirulent clones of epidemiological significance known to cause infections in relatively healthy subjects predominantly in Asia (38). We identified the repertoire of genes essential for growth in laboratory conditions, in pooled human urine, and in human serum. Selected fitness-genes were validated for growth in pooled urine or serum by generating single-gene deletion mutants. Our study provides insight into the molecular mechanisms that enable *K. pneumoniae* to survive *in vivo* and cause disease.

Methods

Bacterial strains, plasmids, and culturing conditions

A complete list of bacterial strains, plasmids, and primers utilized in this study are listed in Table S1 and Table S2. To culture strains, scrapings from a frozen glycerol stock strain were plated onto solid Luria-Bertani (LB) (10 g tryptone, 5 g yeast extract, 10 g NaCl) supplemented with agar 1.5% (w/v) and were incubated overnight at 37°C. A single colony was isolated and used to inoculate 5 mL of liquid LB medium incubated overnight at 37°C with 180 RPM shaking. To prepare stocks, bacteria were grown to mid-exponential phase in LB medium and stored at -80°C with 25% (v/v) glycerol. When required, solid or liquid media were supplemented with appropriate antibiotics at the following concentrations: ampicillin (35 µg/mL); chloramphenicol (100 µg/mL); and kanamycin (100 µg/mL).

Generation of the *K. pneumoniae* ECL8 transposon mutant library

An overnight culture of *K. pneumoniae* ECL8 was inoculated into 2× YT broth at OD₆₀₀ 0.05 supplemented with a final concentration of 0.7 mM EDTA and incubated at 37°C with 180 RPM shaking. Cells were harvested at 0.4 OD₆₀₀ by centrifugation (4,000 g) at 4°C for 20 min. Cell pellets were washed 4 times with ice-cold 10% (v/v) glycerol. *K. pneumoniae* ECL8 electrocompetent cells were transformed with 0.2 µL of EZ-Tn5™ transposon (Epicentre) at 1.4 kV and recovered in brain heart infusion (BHI) broth for 2 h at 37°C with 180 RPM shaking. Cells were plated onto LB agar supplemented with 50 µg/mL kanamycin and incubated overnight at 37°C. More than 1 million transformants were pooled in 15% (v/v) LB-glycerol for storage at -80°C until required.

Transposon library screening in human urine

Human urine from 7 healthy male volunteers was sterilized using a vacuum filter (0.2 µM). Urine was pooled and stored at -80°C until required. Approximately 2×10^8 *K. pneumoniae* ECL8 TraDIS mutants were inoculated into 50 mL of urine and grown for 12 h at 37°C with shaking (P1) in biological duplicates in parallel with control samples that were instead inoculated into 50 mL of LB medium. A sample of P1 was inoculated into 50 mL of urine or LB medium, respectively, at an initial OD₆₀₀ of 0.05 and grown for a subsequent 12 h (P2). Both control and test experiments were passaged and grown for a further 12 h (P3). A sample of culture from P3 was removed and normalized to an OD₆₀₀ of 1 for subsequent genomic DNA extraction.

Transposon library screening in human serum

A 10 mL sample of human blood was collected from 8 healthy volunteers (male and female). Blood was pooled and centrifuged at 6,000 g for 20 min to separate sera from blood components. The pooled serum was sterilized, aliquoted and stored at -80°C until required. Approximately 2×10^8 *K. pneumoniae* ECL8 mutants were inoculated into 1 mL of pre-warmed sera, heat-inactivated sera (60°C for 1 h) in biological duplicates. Samples were incubated at 37°C for 90 min with 180 RPM shaking. Following this, cells were harvested by centrifugation at 6,000 g for 10 min and washed twice with PBS. Cells were then inoculated into 50 mL of LB for outgrowth at 37°C with 180 RPM shaking and harvested at an OD₆₀₀ of 1 by centrifugation at 6,000 g for 10 min. A 1 mL sample of each culture was used for genomic DNA extraction.

Transposon library sequencing and data analysis

Pooled kanamycin resistant *K. pneumoniae* ECL8 cells were prepared for sequencing following an amended TraDIS protocol (27 [link](#)). Briefly, genomic DNA from the *K. pneumoniae* ECL8 library of pooled mutants was extracted from $\sim 1 \times 10^9$ cells in biological duplicate, as per manufacturer's instructions (Qiagen QIAamp DNA blood minikit). The DNA concentration of replicates was

determined using the Qubit 2.0 fluorometer (Thermo Fisher Scientific). The DNA was sheared into ~200 bp fragments by ultra-sonication (Bioruptor Plus Diagenode). Fragmented DNA samples were prepared for Illumina sequencing using the NEBNext Ultra I DNA Library Prep Kit for Illumina according to manufacturer's instructions with the following modifications: ends of fragmented DNA were repaired using the End Prep Enzyme Mix (NEB) and an NEBNext adaptor for Illumina sequencing was ligated to the newly repaired ends. During protocol optimization, samples were analyzed using a TapeStation 2200 (High Sensitivity D5000) to determine DNA fragment sizes following adaptor ligation. The uracil within the adaptor hairpin loop was enzymically excised using the USER enzyme (NEB). AMPure XP SPRI beads (Beckman Coulter) or custom-made SPRI beads were used to select for DNA fragments ~250 bp in size.

To enrich for fragments containing the transposon a custom PCR step was introduced using a forward primer annealing to the 3' end of the antibiotic marker of the transposon and a reverse primer that annealed to the ligated adaptor. The PCR product was purified using SPRI beads at a ratio of 0.9:1 (beads:sample). A further custom PCR step introduced sequencing flow-cell adaptors (Illumina barcodes) and inline barcodes to allow for sample multiplexing (Table S3). Samples were then stored at -20°C until sequencing. After qRT-PCR (KAPA Library Quantification Kit Illumina® Platforms) to determine TraDIS library concentration, a 1.5 µL sample of each library sample diluted to 8 nM was combined and mixed by pipetting to generate a pooled amplified library (PAL) of samples for multiplexed sequencing. The PAL was prepared for Illumina MiSeq sequencing according to manufacturer's instructions.

Bioinformatic analysis of sequencing reads was completed on the Cloud Infrastructure for Microbial Bioinformatics (CLIMB) (39). Raw fastQ files were first demultiplexed according to Illumina barcodes automatically using the Illumina MiSeq software. Experimental replicates were separated by custom inline barcodes using the FastX barcode splitter and the barcodes were subsequently removed using the FastX trimmer (v0.0.13). Each read was checked for the presence of the transposon sequence in two steps; first, reads that contained the first 25 bp of the transposon sequence (AGCTTCAGGGTTGAGATGTGTA), introduced by the TKK_F primer, allowing for 3 mismatches were filtered and parsed. Parsed reads were subsequently checked for the presence of the final 10 bp of the transposon sequence (TAAGAGACAG), allowing for 1 mismatch. The transposon sequence and reads <20 bp were trimmed using Trimmomatic (v0.39). Resulting reads were mapped to the *K. pneumoniae* ECL8 [HF536482.1 and HF536483] genome and plasmid using the Burrows-Wheeler Alignment tool (BWA-MEM) using default parameters (i.e. -k=20bp exact match). Mapped reads were indexed using samtools (v1.8) and converted into bed format using the Bam2bed tool (Bedtools suite v2.27.1). The resulting bed file was intersected against the annotated CDS in the *K. pneumoniae* ECL8 gff file, which was generated using PROKKA (v1.14.0). Transposon insertion sites and their corresponding location were quantified using custom python scripts. Mapped transposon insertion sites were visualized using the Artemis genome browser (40).

Statistical analysis of transposon insertion density

A modified geometric model was applied to identify the probability of finding $k-1$ insertion-free bases followed by a transposon insertion as reported previously (27). In a string of 10,000 independent trials the probability of an insertion 'p' was calculated using the following equation: $P(k) = p(1-p)^{(k)}$.

Identification of putative essential genes

In-house scripts kindly provided by Langridge and colleagues (41) were amended and used for the prediction of essential genes. Briefly, the number of unique transposon insertion sites for each gene was normalized for CDS length (number of UIPs/CDS length in bp), which was denoted the

insertion index score. The Freedman-Diaconis method was used to generate a histogram of the insertion index scores for each gene of the *K. pneumoniae* ECL8 TraDIS library. Distributions were fitted to the histogram using the R MASS library (v4.0.0).

An exponential distribution was applied to the ‘essential’ mode, situated on the left of the histogram. A gamma distribution was applied to the ‘non-essential’ mode, situated on the right of the histogram. The probability of a gene belonging to each mode was calculated and the ratio of these values was denoted the log-likelihood score. Genes were classified as ‘essential’ if they were 12 times more likely to be situated in the left mode than the right mode. Genes with log-likelihood scores between the upper and lower $\log_2(12)$ threshold values of 3.6 and -3.6 respectively were classified as ‘unclear’. Genes with log-likelihood scores below the 12-fold threshold were classified as ‘non-essential’.

Genetic context and comparison of essential gene lists between ECL8, KPNIH1, RH201207 and ATC43816

Annotated genomes of *K. pneumoniae* KPNIH1 (Accession: CP009273.1), RH201207 (Accession: FR997879.1), and ATCC 43816 (Accession: CP009208.1) were downloaded from NCBI. Nucleotide sequences of putative essential genes were extracted using the SeqKit toolbox (42). *K. pneumoniae* ECL8 essential gene homologs were identified in KPNIH1, RH201207 and ATC43816 using Galaxy AU NCBI BLAST+ wrapper blastn using the following criteria (e-value > 1e-10, percent identity >90, percent length >30) and utilizing the top hit based on calculated e value and bitscore (43).

The phylogenetic and average nucleotide identity (ANI) analysis of ECL8 and other *K. pneumoniae* isolates (Dataset S3) was performed using the Integrated Prokaryotes Genome and Pan-genome Analysis (IPGA v1.09) webserver (44). Using the default settings of the genome analysis module, ANI values between each submitted genome pairs were calculated. Then, IPGA performed genome annotation based on entries in the gcType microbial genome database for the given target genome list for phylogenetic analysis and tree construction (45).

BioTraDIS analysis for the identification of conditionally advantageous genes

To identify conditionally essential genes, we used the Bio-Tradis analysis pipeline (16), that measures the read count \log_2 fold changes between each CDS. To ensure robust analysis, CDS with <50 sequence reads in either the test or control condition were filtered and binned. CDS with a \log_2 fold-change >2 (test/control) and a Q-value of >0.05 were classified as conferring a fitness advantage under the conditions tested. To comparatively analyze the impact of transposon insertion-events in genomic regions in the serum-resistant dataset (180 min) to the input, we used the AlbaTraDIS package (v1.0.1) with the following parameters: -a -c 10.0 -f 2 -m 0 (46).

Generation of knock-out strains

Mutants derived from *K. pneumoniae* ECL8 were constructed using the λ Red recombinase system (47). Briefly, the *K. pneumoniae* ECL8 strain was transformed with pACBSCSE, which contains genes coding for the arabinose-induced λ Red recombinase system that permits homologous recombination between dsDNA PCR products and target loci in the bacterial genome. The recombination is based on short stretches of flanking homology arms (~65bp) with the site of recombination. Using pKD4 as a template for the selectable kanamycin cassette, the PCR products used for replacing the target genes were amplified, gel extracted, and electroporated into electro-competent strain *K. pneumoniae* ECL8 harboring pACBSCSE prepared in the presence of 0.5% (w/v) arabinose. Candidate mutants were screened using antibiotics, verified by PCR using primers outside the region of recombination then followed by Sanger sequencing.

Bacterial growth assay

A single colony of each bacterial strain was inoculated into 5 mL of LB medium and grown overnight as previously described. Strains were normalized to an OD₆₀₀ of 1.00 (approximately 7×10^8 cells) and washed twice in PBS by centrifugation at 6,000 *g* for 10 min. Cell pellets were resuspended in 1 mL of the growth medium required for the bacterial growth assay. Greiner Bio-One 96-well U-bottom microtiter plates were inoculated with bacterial strains at an initial OD₆₀₀ of 0.02 in a final well medium volume of 150 μ L and sealed with a Breathe-Easy® sealing membrane (Sigma Aldrich). Inoculated plates were incubated at 37°C with 300 RPM shaking, OD₆₀₀ measurements were taken at 15 min over 24 h using a CLARIOstar® plate reader (BMG LABTECH).

Urine co-culture competition studies between *K. pneumoniae* ECL8 and isogenic mutants

Overnight cultures of *K. pneumoniae* ECL8 and an isogenic mutant were normalized to an OD₆₀₀ of 1.00 and washed twice with PBS. Cell pellets were resuspended in 1 mL of urine. A 500 μ L of either the WT or mutant culture were inoculated into 25 mL of urine and incubated at 37°C with 180 RPM shaking for 12 h. The sample was then transferred to 25 mL of fresh urine at an initial OD₆₀₀ of 0.05 and grown for a further 12 h. The culture was passaged for a further 12 h of growth. These cultures were serially diluted in PBS at 0, 6, 12, 24 and 36 h and plated onto LB agar. Following overnight growth, agar plates were replica plated onto either LB agar or LB agar supplemented with 100 μ g/mL kanamycin grown overnight at 37°C then enumerated. The number of WT CFUs was calculated by subtracting the number of CFUs in media with antibiotics from the total number of CFUs in media without antibiotics. Relative fitness was calculated as a competitive index (CI), defined as ratio of mutant:WT viable cells divided by the corresponding inoculum.

Lipopolysaccharide extraction

A single colony of ECL8 was inoculated into 5 mL of LB medium and incubated overnight at 37°C with 180 RPM shaking. Overnight cultures were normalized to an OD₆₀₀ of 1.00 and centrifuged at 14,000 *g* for 10 min. Cells were resuspended in 100 μ L of cracking buffer (0.125 M Tris-HCl, 4% (w/v) SDS, 20% (v/v) Glycerol, 10% (v/v) 2-mercaptoethanol in dH₂O). The cell suspension was incubated at 100°C for 5 min and transferred to -80°C for 5 min. The cell suspension was incubated at 100°C for a further 5 min and centrifuged at 14,000 *g* for 10 min. An 80 μ L sample of the supernatant was transferred to a new tube and incubated with 5 μ L of 5 mg/mL Proteinase K (QIAGEN) for 1 h at 60°C. Samples were diluted $\times 2$ with Laemmli sample buffer (Sigma-Aldrich) and incubated at 95°C for 5 min. Samples were loaded onto a 4-12% Bis-tris precast NuPAGE gel (Invitrogen) and run at 150 V for 1.5 h. LPS was visualized by silver staining using the SilverQuest kit (Invitrogen) following manufacturer's instructions.

Serum bactericidal assay (SBA)

Pooled serum was thawed on ice and pre-warmed to 37°C. Overnight cultures of bacterial strains were normalized to an OD₆₀₀ of 1.00 in LB medium. Bacterial cells were washed twice with PBS and resuspended in a final volume of 1 mL PBS. A 50 μ L sample of the cell suspension was inoculated into 50 μ L of sera. Sera and cell samples were incubated at 37°C with 180 RPM shaking. Viable bacterial cells were enumerated by plating 10 μ L of cell and sera suspension onto LB agar over a time-course: 0 min, 30 min, 60 min, 90 min, 180 min. Serum bactericidal activity was plotted as the log₁₀ change in colony forming units (CFU) relative to the initial inoculum.

Results and discussion

Generation and sequencing of a *Klebsiella pneumoniae* strain ECL8 transposon input library

A *K. pneumoniae* ECL8 mini-Tn5 mutant library composed of >1 million mutants was constructed and subsequently subjected to TraDIS. The resulting reads were mapped to the reference genome that consists of a ~5.3 Mb chromosome and a single 205-kb plasmid (EMBL Accessions: HF536482.1 and HF536483) (**Figure 1A-B**). The gene insertion index scores of the two technical replicates of the *K. pneumoniae* ECL8 TraDIS library (KTL1 and KTL2) were highly correlated with each other ($R^2=0.955$) demonstrating a high level of reproducibility (Figure S1A). Therefore, sequence reads for both replicates were combined for downstream analysis and essential gene prediction. Through iterative rounds of sequencing, we determined that the library was sequenced to near saturation as the discovery of unique reads plateaued at ~2 million reads (Figure S1B). This library contained 554,834 unique genome-wide transposon insertion sites and 499,919 of these insertions map within annotated coding sequence (CDS) boundaries. This high level of transposon coverage equates to an average transposon insertion every 9.93 bp throughout the genome, equivalent to an insertion approximately every four codons. A de Bruijn graph visualized in the genome assembly package Bandage revealed that the sequencing coverage of the plasmid was only 1.33 fold higher than that of the chromosome indicating that the plasmid is likely present as a single copy (Figure S2) ([48](#)). **Table 1** summarizes the data relating to the ECL8 libraries.

Essential chromosomal genes in *K. pneumoniae* ECL8

To classify a gene as essential or non-essential, the number of transposon insertions within each gene on the chromosome and plasmid was normalized for gene length and this value was denoted the gene insertion-index score (**Figure 1C**). Insertion index scores (IIS) for the *K. pneumoniae* genome followed a bimodal distribution, as has been previously described (Figure S3) ([27](#), [41](#)). The probability of a gene being essential was calculated by determining the likelihood of each given insertion-index score as belonging to the essential or non-essential mode. The ratio of the IIS values was denoted the log-likelihood ratio (Log₂-LR), a metric previously used to categorize genes into essential or non-essential groupings ([27](#), [41](#)). To limit the number of false-positive hits identified, genes were classified as essential only if they were 12-times more likely to be within the essential, rather than the non-essential mode. Based on the above criteria, 373 chromosomal genes were assigned a log₂-LR of less than -3.6 and were therefore classified as essential for growth on solid LB medium supplemented with kanamycin (**Figure 1D**). It should be noted that non-coding sequences such as tRNA and rRNA were excluded from this analysis. Most genes (4551) were classified as non-essential (**Figure 1E**). A subset of 241 genes were located between these two modes with their essentiality mode was deemed ‘unclear’ (**Figure 1F**). A complete list for all *K. pneumoniae* ECL8 bimodal essentiality categorization and their associated statistical significance metrics are listed in Dataset S1.

To understand the essential gene functions, we evaluated their COG (cluster of orthologous) categories; a metric that predicts functional classification against a database of known proteins. We applied a log₂ COG enrichment index to identify COG categories that were enriched among the essential genes in contrast to the wider genome eggNOG (v5.0) orthology data (Figure S4) ([49](#)). We identified no essential genes within the COG categories for chromatin structure and dynamics (B), cell motility (N) and secondary structure (Q) suggesting genes within these categories are not required or redundant for *K. pneumoniae* growth in the utilized nutrient-rich liquid medium. However, genes involved in signal transduction (T) and inorganic ion transport/metabolism (P) were depleted, while genes involved in translation (J), cell cycle control (D) and co-enzyme

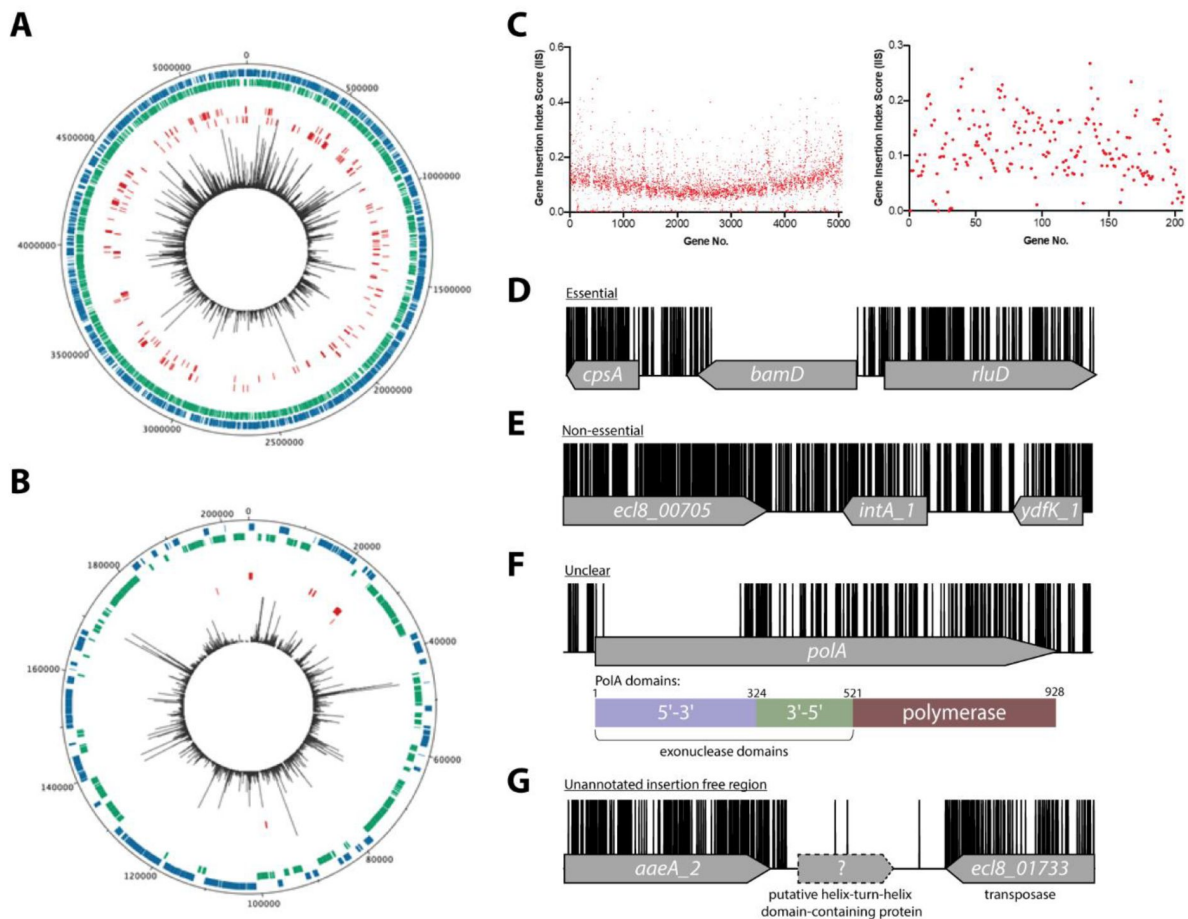


Figure 1

Overview of ECL8 TraDIS data: mapped insertions, insertion index profile and example gene insertion plots.

Insertions are illustrated on the (A) Chromosome and (B) Plasmid, respectively. The outermost track displays the length of the ECL8 genome in base pairs. The subsequent two inner tracks correspond to coding sequences (CDS) on the sense (blue) and antisense (green) DNA strands, respectively. Putative essential CDSs are highlighted in red. The inner-most track (black) corresponds to the location and read frequency of transposon sequences mapped successfully to the *K. pneumoniae* ECL8 genome. Plot generated using DNAPlotter. (C) Gene insertion index scores (IIS) of the *K. pneumoniae* ECL8 TraDIS library mapped in order of genomic annotation of the *K. pneumoniae* ECL8 chromosome and (right) plasmid. Example transposon insertion profiles categorised into essential, non-essential and unclear: (D) an essential outer membrane factor for β -barrel protein assembly; (E) a non-essential gene - *intA_1*, a redundant (several copies) integrase required for bacteriophage integration into the host genome; (F) an “unclear” gene - *polA* an essential gene in prokaryotes required for DNA replication but showed requirement for the N-terminal 5'-3' exonuclease domain; and (G) an insertion free region suggestive of an unannotated ORF. Transposon insertion sites are illustrated in black and capped at a maximum read depth of 1.

Sample	Mapped reads after QC	Genome-wide UIPs	CDS UIPs	Pearson Correlation of Replicates
<u>ECL8 Input libraries (LB)</u>				
KTL1	5,573,710	409,069	367,230	Figure S1A
KTL2	2,854,389	400,915	361,272	
KTL (Combined)	8,429,782	554,834	499,919	
<u>Urine output libraries</u>				
LB	4,324,125	4,324,125	403,381	Figure S7
Urine	4,839,277	4,839,277	389,251	
<u>Serum output libraries</u>				
Serum	4,729,032	115,328	101,348	Figure S9
Heat-inactivated serum	3,565,433	284,761	254,735	
180 min serum exposed	1,481,732	133,790	121,316	Figure S10

Table 1

Summary of transposon-containing sequence reads and unique insertion points (UIPs) mapped to the *K. pneumoniae* ECL8

metabolism (H) were the most highly enriched. This correlates with enriched COG categories shared among essential genes in other members of the Proteobacteria such as *Salmonella enterica* Typhimurium, *S. enterica* Typhi and *Caulobacter crescentus* and serves as an internal control for the validity of the library (50–52).

“Essential” plasmid genes

The identification of eleven genes on the *K. pneumoniae* ECL8 plasmid that met the criteria to be defined as essential was an unexpected observation (Table 2). As previously noted, the bacterial copy number of the plasmid was approximated to be one. The average IIS of a gene located on the plasmid and the chromosome was comparable, 0.16 and 0.11, respectively. Due to the presence of a single plasmid per bacterial cell, and an observed even distribution of IISs for genes located on the plasmid, the lack of insertions in the 11 genes is unlikely to be due to gene dosage effects arising from the presence of multiple copies of the plasmid. Notably, the 11 plasmid-borne “essential” genes included *repB*, which is required for plasmid replication. Therefore, these genes are likely to be required for plasmid replication and stability and are unlikely to be essential for growth. This hypothesis is supported by previous observations that *K. pneumoniae* remains viable when large indigenous virulence plasmids are cured from the bacterium (53–55).

Insertion free regions

Using a highly saturated transposon library it is possible to not only define essential genes, but also define chromosomal regions lacking transposons that are large enough not to have occurred by chance. Previously, we described a geometric model to predict statistically significant regions of the genome that were free from transposon insertions (27). This model indicated that with the insertion frequency calculated for this library, for a genome of 5.3 Mb, an insertion-free region (IFR) of 145 bp or greater was statistically significant (Figure S5). The size of insertion-free regions that are statistically significant for two previously published TraDIS libraries are plotted for comparison (27, 41). A total of 667 genomic regions with insertion-free regions ≥ 145 bp were identified, many which correspond to the 380 essential genes identified through the bimodal analysis described earlier.

The remaining insertion free regions can be explained in several ways. First, as noted previously (27), genes that encode proteins with essential domains are often excluded from the bimodal analysis described above as much of the gene contains transposon insertions. For example, the *polA* gene was classified as “unclear” but contained, barring a single transposon insertion event, an 826-bp insertion-free region. This IFR corresponds to 275 amino acids that are predicted to encode the 5’-3’ exonuclease function of the protein (Figure 1F). This region has also been shown to be required for the growth of *Escherichia coli* in laboratory conditions (56, 57). In contrast, but as noted for *E. coli polA*, multiple transposon insertions are present in the remaining portion of the gene, which confers the 3’-5’ proofreading and polymerase activity. Aside from those genes already identified by the bimodal analyses described above, our analyses revealed 54 additional genes with statistically significant IFRs, which indicates that they are likely essential for growth under the conditions tested here. Thus, our data suggest *K. pneumoniae* contains at least 427 essential genes, which we define as the ECL8 curated essential gene list.

An explanation for the remaining IFRs can be derived from traditional bioinformatic approaches to genome annotation. Originally, genome annotation protocols overlooked small ORFs because (i) they only consider genes that code for proteins >100 amino acids, and (ii) define genes based on sequence homology to those that have been previously annotated (58–60). Interestingly, the methodology used here revealed 59 regions ≥ 145 bp that lacked transposon insertion sites and did not map to within annotated CDS boundaries (Figure 1G). The applied approach is conservative and does not include insertion free regions that overlap with the 5’ or 3’ region of any annotated CDS. Forty-six of these regions contain potential open reading frames that could encode proteins

Locus tag	Gene	Function ^a
ecl8_05075	<i>repB_1</i>	RCR (rolling circle replication) plasmid protein
ecl8_05092	-	SidC homolog
ecl8_05094	-	DUF2509 family protein
ecl8_05096	-	NB-ARC domain-containing protein
ecl8_05104	<i>rcaA_2</i>	DNA-binding transcriptional activator RcsA
ecl8_05105	<i>yedA_2</i>	putative transporter
ecl8_05106	-	DUF2695 domain-containing protein
ecl8_05170	-	DUF305 domain-containing protein
ecl8_05205	-	NADPH dependent preQ0 reductase
ecl8_05272	-	Transposase
ecl8_05279	<i>sopB</i>	Control of plasmid partitioning

^aFunction derived from the top hit using NCBI blastN (www.blast.ncbi.nlm.nih.gov/Blast.cgi)

Table 2

***K. pneumoniae* ECL8 plasmid-borne genes computationally deemed essential.**

through blastX identification. These putative unannotated ORFs were not characterized further within this study but might represent essential genes. This study emphasizes the untapped potential of TraDIS datasets to identify previously uncharacterized, essential, small coding sequences and promoter elements that are not immediately obvious by traditional and computational genomic annotation methods. A complete list of IFRs, within annotated ORFs or in intergenic regions, and an ECL8 curated essential gene list is found in Dataset S2.

Directional insertion bias of Tn5 transposon into capsular polysaccharide (*cps*) operon

As reported previously (27, 61), due to the design of the transposon used in this study, transcription of polycistronic operons can be affected by the insertion orientation of the transposon (Figure 2A). Directional insertion bias of the transposon was noted within a large genomic region of ~14 kb encoding the virulence-associated capsular polysaccharide (*cps*) operon (Figure 2B). The bioinformatic web-tool ‘Kaptive’ determined with high confidence the *K. pneumoniae* ECL8 *cps* operon encodes for a KL2/K2 capsule with 18/18 of the expected genes (Dataset S6) (62).

Notably, transposon insertions were poorly tolerated in the forward Tn orientation of the DNA strand. While bias for Tn insertions has previously been described in individual genes (e.g. ribosomal RNA genes), this study is the first to describe such a large bias across an operon (27, 50). However, the basis for this bias is not fully understood. One potential explanation for such bias might be the presence of a gene encoding a toxic small RNA (tsRNA). Typically, tsRNAs are usually present in the 5’ or 3’ untranslated regions of genes and act as regulators of gene expression at a post-transcriptional level, but due to their small size, typically <500 nucleotides, they are very difficult to predict (63, 64). However, this hypothesis does not explain why transposon insertions are uniformly absent for the opposite orientation of the transposon and not isolated to ‘hotspots’ in the 5’ and 3’ untranslated regions. An alternative hypothesis is that the reverse orientation expression of the capsular operon might result in the accumulation of intracellular capsular intermediates that may be toxic if left to accumulate in the periplasm. This finding may hint to a more cryptic regulation mechanism of the *cps* operon with implications for other similar *Klebsiella* capsular serotypes and species.

Comparison of essential genes to other *K. pneumoniae* transposon libraries

Transposon libraries have previously been generated in other *K. pneumoniae* strains, however these studies primarily focused on identifying genes that are required for a specific phenotype i.e. antibiotic stress or capsular mutants, and therefore they lack a definitive list of essential genes for *in vitro* growth (65–69). To benchmark our library, we compared our data to previously published studies that did report *K. pneumoniae* essential gene lists: KPNIH1 (ST258), RH201207 (ST258) and ATCC 43816 (ST493) (30, 70). As shown in Figure 3, the ECL8 strain is an acceptable representative for the *K. pneumoniae* KpI phylogroup as demonstrated by the phylogenetic and ANI (average nucleotide identity) analyses in the context of *K. pneumoniae* strains previously used or ‘common’ nosocomial lineages (71–74). Furthermore, our transposon mutant library is amongst the most saturated *K. pneumoniae* libraries reported to date, permitting accurate determination of gene essentiality and delineating between real and stochastic effects. The number of essential genes among the four strains ranged from 434 to 642; a complete list and comparison of our curated gene list against the reported gene lists of KPNIH1, RH201207 and ATCC 43816 is found in Dataset S3. We speculate that the higher number of essential genes predicted in the KPNIH1 gene list is due to a lower transposon density, as this is associated with an increased likelihood of false-positive results (75). This might be due in part to differences in the techniques used to construct the libraries; here we used a mini-Tn5 transposon which showed no bias in insertion whereas others have used the TnSeq method relying on the

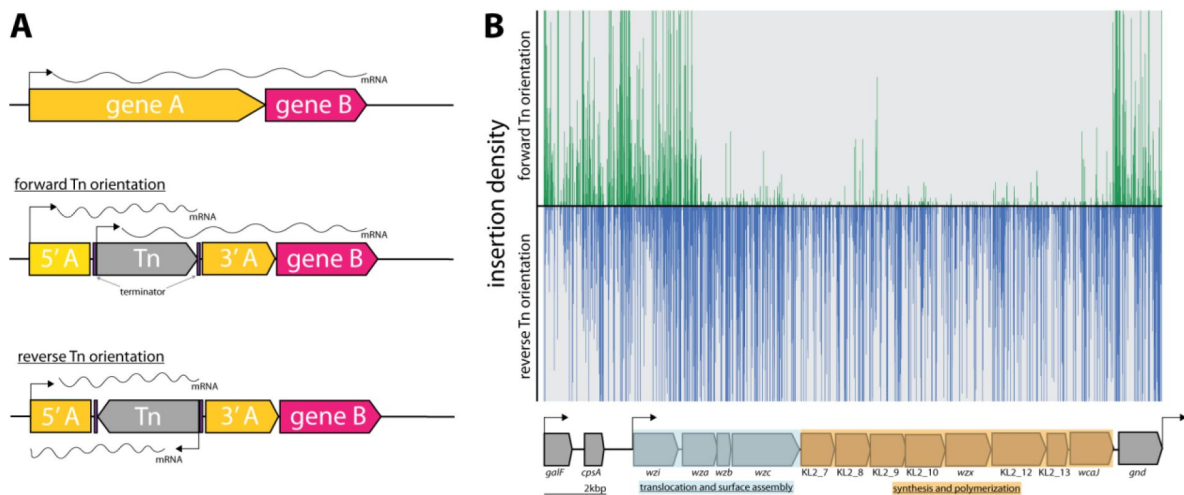


Figure 2

Directional insertion bias of transposon (Tn) into the *cps* operon.

(A) Schematic representing the Tn orientation and effect on downstream transcription. The utilized Tn transposon is flanked by terminator sequences (purple) is shown inserted in gene A (yellow) of a hypothetical two-gene transcription unit AB in the forward or reverse orientation. In the forward orientation transcription of gene B (pink) is expected to occur from the promoters of 5' of gene A or the internal Tn5 but polycistronic mRNA differs in length due to the attenuation by the terminators. (B) Transposon insertions mapping to the K2 capsular operon of *K. pneumoniae* ECL8. Transposon insertions are configured in the forward orientation (green), and reverse orientation (blue) and insertion densities are capped at a maximum read depth of 50. The operon structure of the K2 capsular genes consisting of three promoters driving the expression of three unidirectional polycistronic transcripts is depicted.

Himar I Mariner transposon, which has a requirement for a TA dinucleotide motif (76 [↗](#)). Differences in gene essentiality might also be due to inherent genomic differences or due to differences in experimental methodology, computational approaches, or the stringency of analysis used to categorize these genes. While further validation experiments will be required to determine whether specific genes are essential, 57% of the essential genes identified in *K. pneumoniae* ECL8 were essential in the other three strains. Thus, together these data indicate that our transposon library is sufficiently dense and representative of *K. pneumoniae* (KpI phylogroup) to be used for further studies.

Identification of genes required for growth in human urine

TIS has become a formidable tool for rapid genome-scale screens to link genotype to phenotype. As the urinary tract is a major site for *K. pneumoniae* infection, we used our transposon mutant library to identify genes required for growth in urine, thus enabling us to define the urinome of *K. pneumoniae*. Cultures were grown until late stationary phase (12 h) followed by two subsequent 12 h passages before sequencing (Figure 4A [↗](#)). This approach eliminated mutants that were unable to grow in urine while allowing those capable of growth to flourish. DNA from test and control samples was harvested, sequenced, and analyzed as before (Figure S6). As the gene IISs for the library passaged in both LB and urine were highly correlated with respective biological replicates of 0.8483 and 0.9078 R^2 , replicates were combined for downstream analyses (Figure S7). The data for all *K. pneumoniae* genes and their associated statistical significance metrics are listed in Dataset S4.

Ten genes that satisfied a stringent threshold of a \log_2 fold change (\log_2FC) >-2 and a Q-value ≤ 0.05 , relative to the LB control, were considered as advantageous for *K. pneumoniae* ECL8 growth in urine (Figure 4B [↗](#)). The transposon insertion profiles of these genes showed a marked decrease in overall insertions following passaging in urine when compared to the LB control (Figure 4C-F [↗](#)), suggesting loss of these genes confers a fitness defect. These included genes encoding the superoxide dismutase *SodA*, the structural outer membrane protein *OmpA* (63 [↗](#)), the periplasmic chaperone *Skp* (77 [↗](#)), and five proteins (*fepB*, *fepD*, *fepG*, *exbB* and *exbD*) associated with iron acquisition (78 [↗](#)). The remaining two genes (*ytfL* and *argH*) play key roles in controlling cytoplasmic cadaverine and putrescine concentrations and amino acid biosynthesis, respectively (79 [↗](#), 80 [↗](#)). The proper regulation of cadaverine and putrescine maintains intracellular pH concentrations and reduce oxidative damage to proteins and DNA and may be in response to acidic conditions in urine known to be uncondusive for colonization of uropathogens (81 [↗](#), 82 [↗](#)).

To experimentally validate our observations, seven independent mutants were constructed by allelic replacement of the chromosomal gene with a kanamycin (*aph*) cassette. To determine whether *K. pneumoniae* strains lacking the genes identified in this screen were truly less fit in urine compared to the parent strain, the WT ECL8 and individual isogenic mutant strains were inoculated into urine or LB medium at a 1:1 ratio. These cultures were sequentially passaged, and the CFU/mL of both the WT and mutant strain were determined over a time-course of three 12 h passages (Figure 4G [↗](#)). When compared to the wild-type, a $\Delta sodA::aph$ mutant was less fit in both urine and LB, but the phenotype was exacerbated in urine. In contrast, the fitness of the remaining mutants was comparable to the parent strain when grown in LB medium and only less fit when grown in urine. While the relative competitive index of the $\Delta ytfL::aph$ strain was 0.8 in urine, the *ompA*, *fepB*, *fepD*, *exbB* and *exbD* mutants were dramatically less fit than the parent strain in urine (Figure 4G [↗](#)).

Based on these observations, we hypothesized that iron-levels were limiting growth in human urine and that the ability to acquire iron was crucial for *K. pneumoniae* to survive and grow *in vivo* (83 [↗](#), 84 [↗](#)). To test this hypothesis, urine was supplemented with exogenous ferrous iron (100 μM $FeSO_4$) or an iron chelator (100 μM bipyridine/2,2-dipyridyl). No variance in optical density

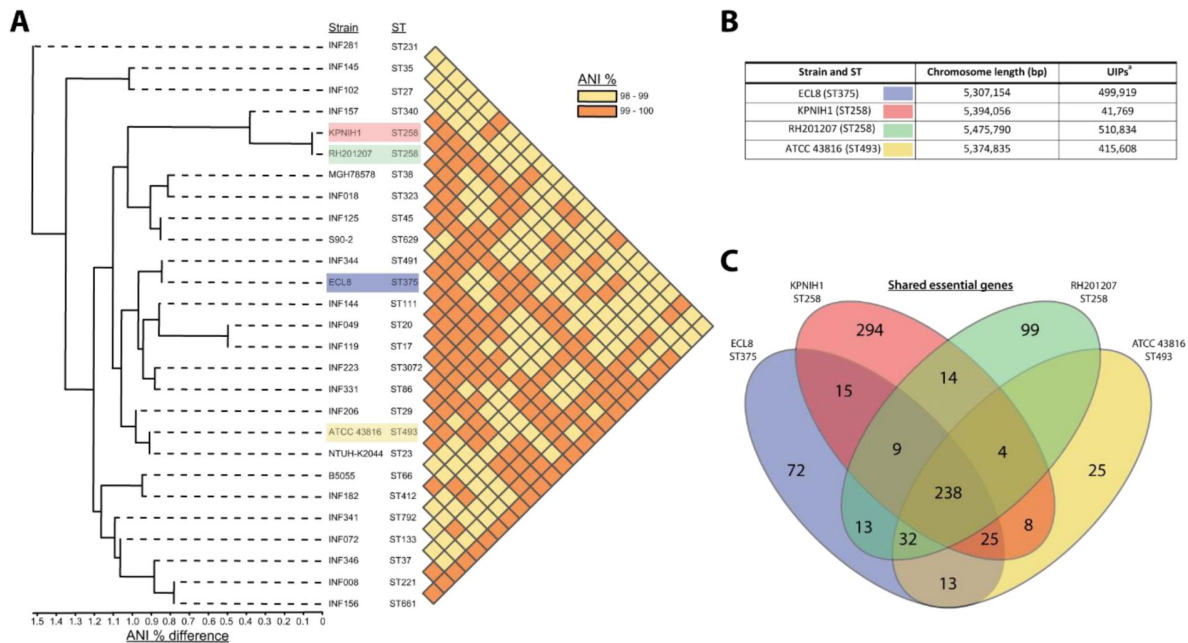


Figure 3

Phylogenetic context of *K. pneumoniae* ECL8 and comparison to previously reported essential gene lists.

(A) Phylogenetic tree and ANI analysis generated using the IPGA webserver demonstrating the phylogenetic context of *K. pneumoniae* ECL8 compared to other previously published *K. pneumoniae* strains or isolates belonging to “21 ‘common’ lineages” of nosocomial origin by other groups. The average nucleotide identity (ANI) is a similarity index metric between a given pair of genomes applicable to prokaryotic organisms. A cutoff score of >95% typically indicates they belong to the same species. (B) Tabular comparison of *K. pneumoniae* strains listing genome size and number of unique insertion points mapped (C) Venn diagram depicting the shared and unique genes required for growth in nutrient rich media (i.e. LB). Complete list of genomes, gene comparisons and exclusions lists can be found in Dataset S3.

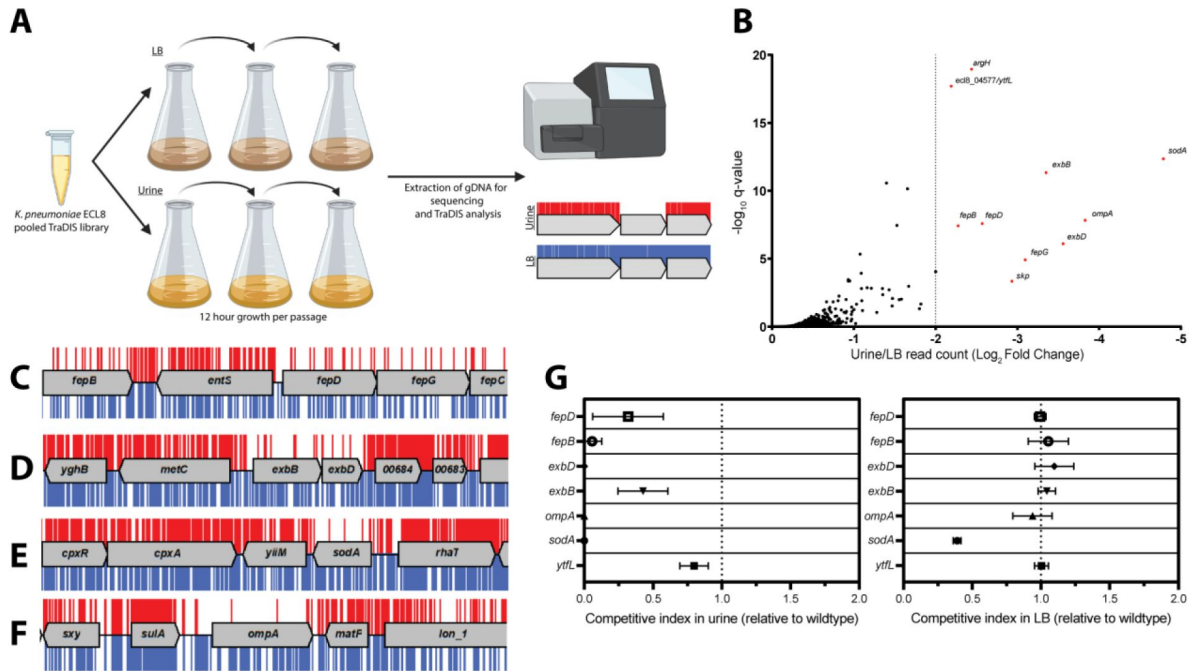


Figure 4

Overview and validation of ECL8 fitness-factors for growth in pooled human urine.

(A) Schematic of the experimental design used to identify genes that provide a fitness advantage for *K. pneumoniae* ECL8 growth in pooled human urine. The *K. pneumoniae* ECL8 library was inoculated into either 50 mL of LB or 50 mL of urine and incubated at 37°C with 180 RPM shaking for 12 h. The library was passaged into 50 mL of fresh LB or pooled human urine at an initial OD₆₀₀ of 0.05 two subsequent times. A 1 mL sample normalized to an OD₆₀₀ of 1 from each culture was processed for genome extraction and multiplexed sequencing using an Illumina MiSeq. (B) Log₂ fold change (Log₂FC) of the read count for each *K. pneumoniae* ECL8 gene when passaged in urine relative to an LB control. Genes highlighted in red satisfy a stringent applied threshold (Log₂FC > -2, Q-value ≤ 0.05). The Q-value is the P-value that has been adjusted for the false discovery rate for each gene. For brevity, only genes with a Log₂FC ≥ 0 are illustrated. Selected transposon insertion profiles of genes identified as advantageous for growth in urine: (C) *fepB*, *fepD*, *fepG* (D) *exbB*, *exbD* (E) *sodA* and (F) *ompA*. These genes exhibited a significant loss of transposon insertions following growth in urine (red) in comparison to LB broth (blue). A 5-kb genomic region including the gene is illustrated. Reads are capped at a maximum depth of 1. (G) The fitness of gene replacement mutants relative to WT *K. pneumoniae* ECL8 in either LB medium or urine. The relative competitive index of single-gene replacement mutants after 12 h passages × 3 in either LB medium or urine. A relative fitness of one would indicate comparable fitness to WT. The mean is plotted (± 1 SD).

was observed after passaging in LB medium (**Figure 5A**). However, the optical density of *K. pneumoniae* cultures decreased after passage in urine (**Figure 5B**), and the restricted growth was further exacerbated by the addition of the iron chelator 2,2-dipyridyl (**Figure 5C**). In contrast, supplementation of urine with exogenous iron increased growth relative to non-supplemented cultures with no difference in growth upon passage (**Figure 5D**). To further interrogate the role of iron limitation, the growth kinetics of the constructed mutants were grown in urine with and without exogenous ferrous iron for 16 h in a microtiter plate assay. Not unexpectedly, area under the curve (AUC) analysis revealed that mutants lacking genes involved in iron uptake (*fepB*, *fepD*, *exbB*, *exbD*) were drastically less fit than the wildtype (**Figure 6E**). Surprisingly, our screen showed several siderophore synthesis genes did not confer a statistically significant fitness advantage for growth in urine (i.e. *entACDF*, **Figure 5F**). In contrast, the highest Log₂FC increase (~7-fold) in read counts mapped to the Ferric Uptake Regulator (*fur*) gene indicating its loss is beneficial for growth in urine. In Gram-negative bacteria, Fur is a key regulator for iron homeostasis functioning as a transcriptional repressor for siderophore synthesis genes in an iron concentration-dependent manner (85–87). Furthermore, the Fur regulon includes the cognate ferric enterobactin uptake (Fep) genes, for which decreased Log₂FC read counts were also noted (**Figure 5G**). Altogether, this suggests that the Fur regulon plays a pivotal role for *K. pneumoniae* growth in urine by tightly regulating enterobactin synthesis and enterobactin-mediated iron uptake.

Identification of genes required for resistance to complement-mediated killing

To identify genes that protect against complement-mediated killing, previously defined as the serum resistome (22, 23), we first established the serum killing kinetics of *K. pneumoniae* ECL8. Approximately, 2×10^8 cells were incubated with 100 μ L of human serum for 180 min. At specified time points, aliquots were plated to determine the number of viable bacteria. As expected, no viable bacteria were recovered from the *E. coli* BW25113 control (88). In contrast, a $2 \log_{10}$ decrease in the number of viable *K. pneumoniae* cells was observed after 90 min exposure to normal human serum, and a $>4 \log_{10}$ decrease after 180 min exposure. To determine whether the observed reduction in viable cells was due to the presence of active complement proteins, *K. pneumoniae* was incubated in heat-inactivated serum control where no reduction in viable was noted (Figure S8).

Subsequently, 2×10^8 cells from the ECL8 TraDIS library were inoculated into 1 mL of human serum or 1 mL of heat-inactivated human serum and incubated for 90 min. Following exposure to serum, cells were grown in duplicate to an OD₆₀₀ of 1 in LB medium to enrich for viable mutants. DNA was harvested from each sample, and subsequently sequenced as described previously (**Figure 6A**). The Pearson correlation coefficient (R^2) of gene insertion index scores (IIS) for two sequenced biological replicates were calculated as 0.91 (normal human serum) and 0.76 (heat inactivated serum) (Figure S9). To ensure robust data analysis, thresholds were applied to the data where genes with less than 50 mapped reads in the input library were removed from downstream analysis to exclude confounding essential genes and minimize the effect of stochastic mutant loss. A total of 356 genes with a log₂FC ≤ -2 , P < 0.05, and Q-value of ≤ 0.05 between the serum and heat-inactivated control were classified as genes that are advantageous for growth under complement-mediated killing conditions (**Figure 6B**). The complete list of all genes analyzed for growth in human serum and their associated statistical significance metrics are listed in Dataset S5. The operons encoding lipopolysaccharide (LPS) core antigen, O-antigen, and enterobacterial common antigen (ECA) biosynthesis were noted as containing several conditionally essential genes (**Figure 6C**). Mutants defective in these cell envelope structures have previously been reported to play a role in membrane integrity and resistance to serum-killing for a variety of Gram-negative bacteria (89–91). Genes implicated as important for serum resistance encode proteins with an important role in membrane stability. They include GalE involved in LPS sugar sub-unit

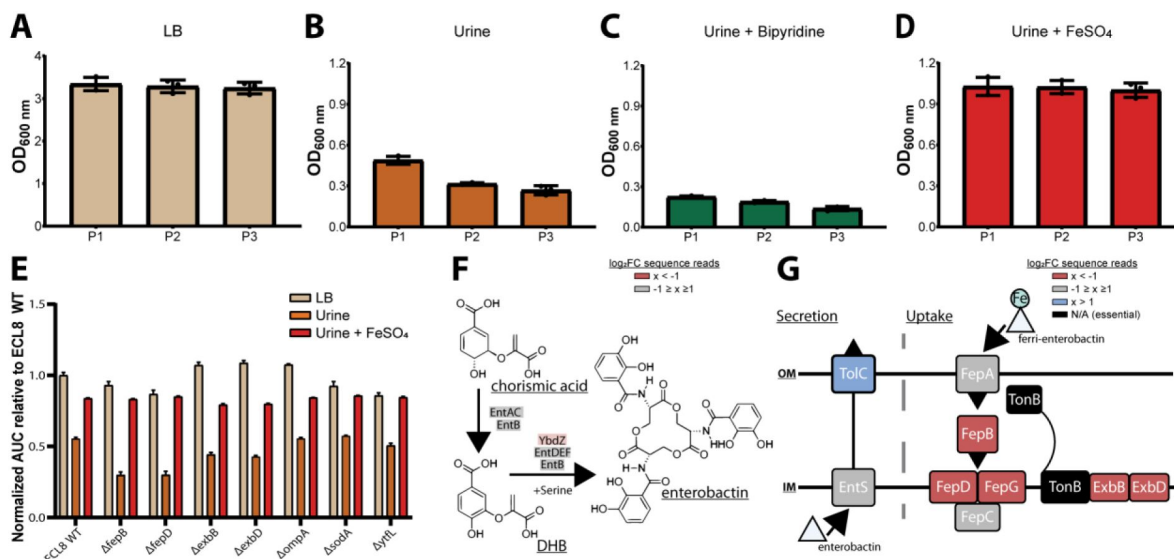


Figure 5

Growth of the *K. pneumoniae* TraDIS library following passaging in LB and urine and schematic diagrams of enterobactin synthesis, secretion and uptake.

The OD₆₀₀ of the *K. pneumoniae* TraDIS library following 12 h of growth (P1) and two sequential 12 h passages (P2 and P3). The library was passaged into fresh medium (A) LB or (B) urine to an initial OD₆₀₀ of 0.05. To determine the effect of iron supplementation and depletion, urine was supplemented with exogenous iron (C) 100 μM FeSO₄ or an iron chelator (D) 100 μM 2,2-dipyridyl. The average OD₆₀₀ of three biological replicates for each time point is plotted (±) 1 SD. (E) Area under curve comparative analysis (OD₆₀₀ vs. time) of *K. pneumoniae* ECL8 and mutants grown in LB, urine or urine supplemented with 100 μM FeSO₄ grown for 16 hours with 180 rpm shaking. The average of three biological replicates is plotted for each condition with error bars representing SD. (F) Simplified schematic of the enterobactin synthesis pathway. YbdZ, a co-factor of EntF for the terminal steps for enterobactin synthesis, depicted in light red had a Log₂FC sequence read value of -1.58 suggesting this gene conferred an overall fitness advantage for growth in urine. (G) Schematic representation of enterobactin secretion and uptake. The TonB transport system is present in Gram-negative bacteria and is required to transport Fe-bound enterobactin through the outer (OM) and inner membrane (IM) to the cytosol where it can be utilized. Based on Log₂FC sequence read value, loss of TolC (blue) was beneficial for growth, relative to an LB control. Loss of proteins, colored in red, had Log₂FC sequence read values <-2 suggesting they confer a fitness advantage for grown in urine. Proteins depicted in grey were genes that had Log₂FC values that ranged from -1 to 1 exposed to urine relative to an LB control. Genes depicted in black were essential and had no determinable Log₂FC value.

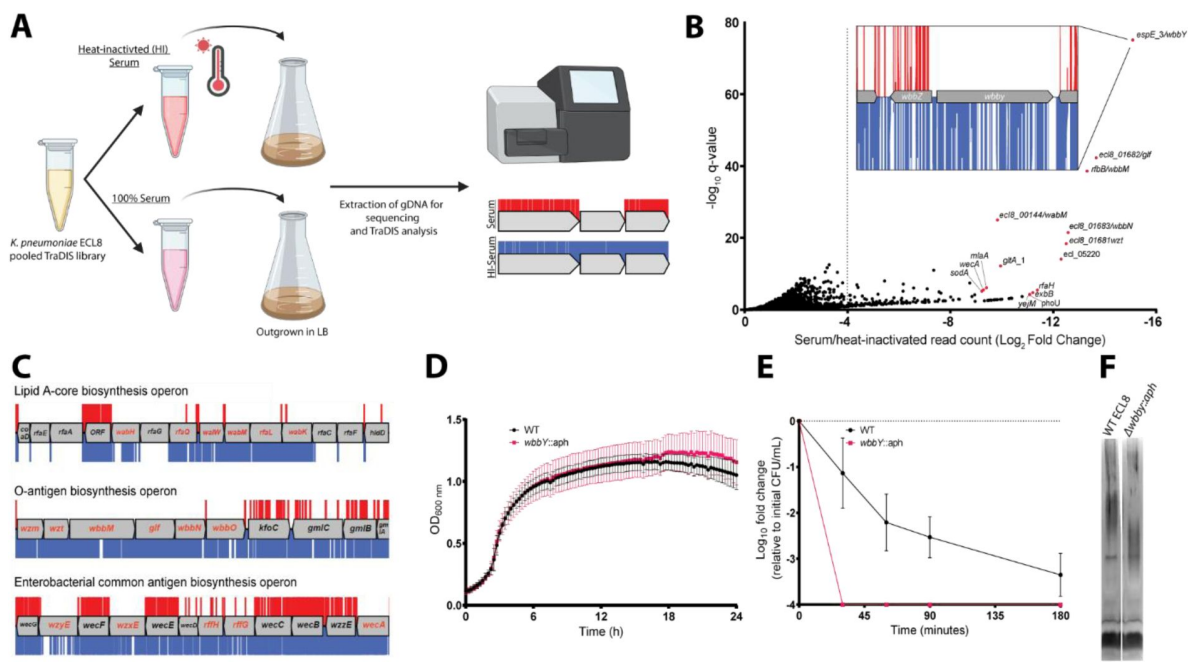


Figure 6

Overview and validation of ECL8 genes that increase resistance to complement-mediated killing.

(A) The experimental methodology utilized for screening the TraDIS library in human serum and a heat-inactivated serum control. *K. pneumoniae* ECL8 (2×10^8 cells) of the mutant library was inoculated into either 1 mL of human serum or 1 mL of heat-inactivated human serum and incubated for 90 min. Following exposure to serum, cells were grown to an OD_{600} of 1 in LB medium to enrich for viable mutants. A 1 mL sample normalized to an OD_{600} of 1 from each culture was processed for genome extraction and multiplexed sequencing using an Illumina MiSeq. (B) Log_2FC for each gene of the *K. pneumoniae* ECL8 TraDIS library when incubated in pooled human serum relative to a heat-inactivated serum control. Selected genes highlighted in red are amongst the total of 144 genes that satisfy a stringent applied threshold ($\text{Log}_2\text{FC} \geq -4$, $Q\text{-value} \leq 0.05$). For brevity, only genes with a $\text{Log}_2\text{FC} \geq 0$ are illustrated. Inset: transposon insertion profile of *wbbY*, gene with the highest fold Log_2FC , flanked by *wbbZ* and a transposable element at its 3'. Transposon insertions following exposure to serum and a heat-inactivated serum control are illustrated in red and blue, respectively. Transposon reads have been capped at a maximum of 10. (C) Transposon insertion profiles of genes within the: LPS, O-antigen and the ECA biosynthesis operons. Genes in red font had a significantly ($\text{Log}_2\text{FC} \geq -4$, $Q\text{-Value} = \leq 0.05$) decreased fitness when disrupted with a transposon following exposure to serum for 90 minute (red), relative to a heat-inactivated serum control (blue). Operons are not drawn to scale and reads capped at a maximum read depth of 1. (D) Growth profile of WT *K. pneumoniae* ECL8 and $\Delta wbbY::aph$ in LB broth. Mean is plotted (± 1 SD). (E) Serum killing assay of WT *K. pneumoniae* ECL8 and $\Delta wbbY::aph$. Mean is plotted (± 1 SD). (F) LPS profiles of WT *K. pneumoniae* ECL8 and $\Delta wbbY::aph$. Overnight cultures of each strain were normalised to an OD_{600} of 1. The LPS was separated on 4-12% Bis-Tris gels and was visualized by silver staining using the SilverQuest kit (Invitrogen).

biosynthesis (92 [↗](#), 93 [↗](#)), outer membrane protein MlaA involved in phospholipid retrograde transport (94 [↗](#)), cardiolipin synthase CIsA (95 [↗](#)), Bam complex component BamE (96 [↗](#)), and proteins involved in LPS biosynthesis (LpxC) and its regulator (YejM) (97 [↗](#)).

To validate our observations, we selected the gene with the greatest Log₂FC decrease between serum and a heat-inactivated control; a putative glycosyltransferase *espE_3/wbbY* (inset, **Figure 6B** [↗](#)). Analyses using the ‘Kaptive’ webtool suggested that ECL8 encodes the O-antigen serotype O1v2 with the operon having 98.98% nucleotide identity to the reference genome (Dataset S6) (62 [↗](#)). The O-antigen of the O1v2 serotype features distal repeating D-galactan I and D-galactan II sugar sub-units (98 [↗](#)). Despite its role in O-antigen biosynthesis, *wbbY* is not located within the *rfb* LPS operon. To determine the role of *wbbY* in serum sensitivity, the gene was replaced with an *aph* cassette and the resulting mutant was compared to its parent strain using a serum bactericidal assay. A comparable growth profile was observed for *K. pneumoniae* ECL8 and the $\Delta wbbY::aph$ mutant in LB medium (**Figure 6D** [↗](#)). However, the $\Delta wbbY::aph$ mutant was more sensitive to human serum than the parent with no viable mutants surviving after 30 min (**Figure 6E** [↗](#)). To investigate whether the *wbbY* deletion affected LPS production, crude LPS extracts were visualized using silver staining (**Figure 6F** [↗](#)). The $\Delta wbbY::aph$ strain produced LPS with a lower molecular-weight compared to the parent strain, suggesting that a truncated O-antigen was expressed. Alterations in the amount or length of LPS produced are known to influence susceptibility to serum mediated killing (90 [↗](#)). Importantly, Hsieh *et al* have previously reported that deletion by *wbbY* in *K. pneumoniae* NTUH-K2044 (ST23) resulted in LPS profile defects due to abrogated D-galactan II production (98 [↗](#)). The authors also demonstrate that gene complementation restores LPS profiles and serum-resistance, thus demonstrating that this screen was robust in identifying a key *K. pneumoniae* gene involved in complement-mediated killing.

Identification of genes required for serum-resistance

Following the identification of genes that when mutated confer increased sensitivity to complement-mediated killing (i.e. the serum resistome), the *K. pneumoniae* ECL8 TraDIS library was screened for mutants that confer increased resistance to serum-killing. Approximately 2×10^8 TraDIS mutants were incubated in 1 mL of human serum for 180 min. The output pool was washed with PBS and plated onto LB agar supplemented with kanamycin (**Figure 7A** [↗](#)). Following overnight growth, ~150,000 colonies were recovered and pooled for sequencing confirming good correlation of replicates (Figure S10). We then used AlbaTraDIS to identify mutations that conferred a fitness advantage or disadvantage for survival in serum. In addition to identifying genes with an increase or decrease in reads between the condition and control samples, AlbaTraDIS will also analyze changes in sequencing read depth of insertions immediately upstream and downstream of a gene, as well as within-gene transposon orientation biases. Such differences can be strong indicators of mutations that result in gene expression or regulatory effects (For a detailed explanation please see (46 [↗](#))). The data for insertions with a significant (>2-fold) change in read-depth following serum exposure for 180 min are listed in Dataset S7. As expected, similar to our previous experiment genes with the greatest significance in decreased insertions, suggesting decreased fitness, were O-antigen outer-core biosynthesis gene *espJ_2/wabI* and O-antigen ligase *rfaL/waaL* (**Figure 7B** [↗](#)). Genes with significantly increased insertions, suggesting increased fitness, included *hns*, *gnd* and *igaA* (**Figure 7C** [↗](#)). Closer inspection of the transposon insertion profiles further confirmed the enrichment of *hns* mutants when comparing the serum exposed test to the input control (**Figure 7D** [↗](#)). To validate our observations, a defined *hns* mutant was constructed by allelic replacement with an *aph* cassette in the same orientation as native gene transcription. A comparable growth profile in LB was observed for the *hns* mutant relative to the parent (**Figure 7E** [↗](#)). To determine whether the *hns* mutant was indeed more resistant to serum a sample of 1×10^8 cells was incubated in serum for 360 min. At 30 min post-incubation the number of viable *hns::aph* cells was decreased by ~2 log. However, no additional decrease in viable cell numbers was observed at later time points and these strains proliferated in serum (**Figure 7F** [↗](#)). Ares and colleagues demonstrated that *rcsA*, *galF*, *wzi*, and *manC* were derepressed in a Δhns *K. pneumoniae* mutant resulting in increased capsule production (99 [↗](#)).

Similarly, up-regulation of *rcsA* was noted in an *E. coli* Δ *hns* mutant. RcsA is known to positively regulate the capsular locus (100 [↗](#), 101 [↗](#)). Notably, IgaA represses the Rcs regulon, preventing activation of RcsA. Mutants in *igaA* are enriched in our experiments (Figure S11A). These data suggest that activation of the Rcs regulon confers resistance to serum killing in *K. pneumoniae*, as noted for other members of the *Enterobacteriaceae*, by increasing capsule production (102 [↗](#)).

The *gnd* gene encodes a 6-phosphogluconate dehydrogenase involved in the oxidative branch of the pentose phosphate pathway. Interestingly, sequence reads mapping to *gnd* were enriched for the forward orientation of the transposon only (Figure S11B). Transposon insertions in this orientation have transcriptional read-through driving expression of the downstream neighboring gene *manC* and more distal O-antigen biosynthesis genes (i.e. *rfb* cluster) (103 [↗](#)). The *manC* gene encodes mannose-1-phosphate guanylyltransferase that is required for the synthesis of capsule, and as noted above, upregulation of *manC* results in increased production of capsule.

Conclusion

For a variety of reasons, the determination of gene essentiality from TraDIS data is challenging (27 [↗](#)). Here, we used two different computational approaches to identify essential genes ensuring that our essential gene dataset includes those genes that can tolerate insertions in regions of the gene but where specific domains are essential for growth. Coupled with the presented phylogenetic and genomic analyses, the observation that 57% of the essential genes identified in this study were found to be essential in three of the four *K. pneumoniae* TraDIS libraries described to date provides reassurance that this library would provide meaningful data for subsequent studies. A minor caveat that is worthwhile mentioning is the potential for false-positive gene essentiality calls due to nucleoid-associated proteins (NAPs) hinders transposon insertion (104 [↗](#)). Nevertheless, the high density of insertion sites achieved in our study ensured reliable identification of essential and conditionally-essential genes and a low probability of false positive identification, which had previously been noted for low complexity libraries (75 [↗](#)).

The search for genetic determinants of bacterial survival and growth *in vivo* has been augmented by whole genome approaches to infection, including transposon insertion site sequencing techniques such as TraDIS and TnSeq (15 [↗](#)). These data have potential implications for the design and development of novel drugs, vaccines and antivirulence strategies. In this study, we employed TraDIS to identify genes which, when mutated, confer decreased or increased fitness for growth in human urine and serum, two *in vivo* niches relevant to *K. pneumoniae* infection. Unexpectedly, our study revealed only 11 genes significantly required for growth in urine. These included genes encoding the outer membrane protein OmpA, its chaperone Skp, the superoxide dismutase SodA, and genes required for iron acquisition by the enterobactin uptake system. Notably, not all the genes for enterobactin synthesis, export and uptake were essential (Fig. 4 [↗](#)). The gene encoding FepB, the periplasmic chaperone for the iron laden siderophore, was essential, as were *fepD* and *fepG*, which encode the inner membrane uptake system. The TonB complex (TonB-ExbB-ExbD), which energizes the translocation of iron laden enterobactin through the FepA outer membrane pore, was also essential for growth in urine. In contrast, the genes encoding FepA, the inner membrane ATPase FepC, and the enterobactin synthesis (Ent) and export (TolC) components were not essential. These observations can be explained in two ways. First, as *K. pneumoniae* ECL8 contains paralogous copies of *fepA* (*fepA_1* and *fepA_2*) and *fepC* (*fepC_1* and *fepC_2*), the non-essential nature of *fepA* and *fepC* might be the result of functional redundancy. Second, as TraDIS is in principle a large-scale competition experiment between thousands of mutants, mutants lacking enterobactin (or aerobactin) synthesis and export genes can “cheat” by acquiring the siderophore released from siderophore-producing strains within the population, a phenomenon described previously (105 [↗](#), 106 [↗](#)). It should be mentioned, our study utilized filter sterilized urine which may preclude identification of genes that are required for interspecies predation, cross-protection and cross-feeding in the context of a urinary microbiome (107 [↗](#), 108 [↗](#)).

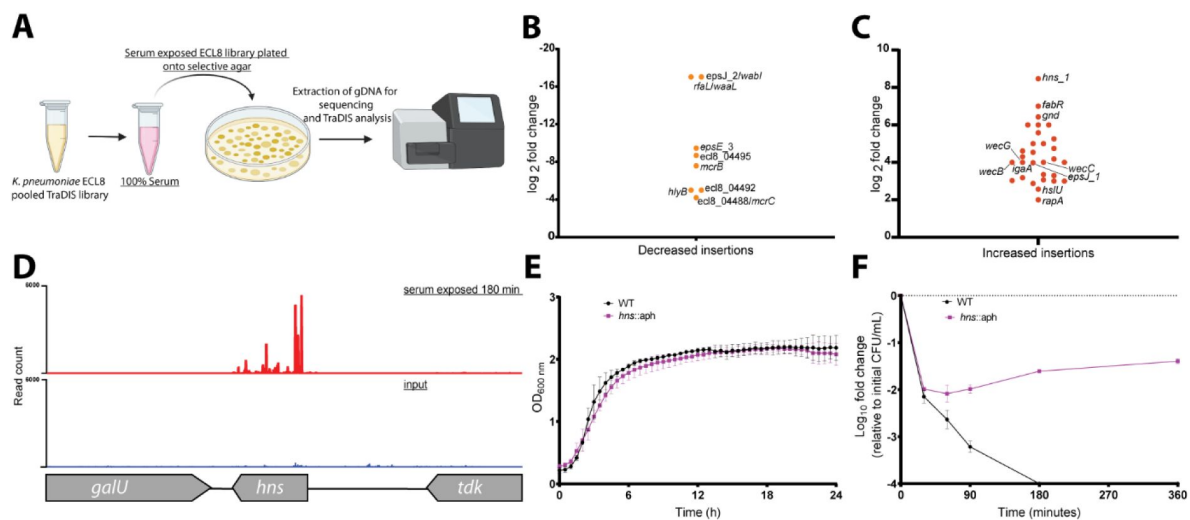


Figure 7

Overview and validation of ECL8 fitness-factors for survival in pooled human serum.

(A) The experimental methodology utilized for screening the TraDIS library to identify genetic factors that increase resistance to human serum. *K. pneumoniae* ECL8 (2×10^8 cells) of the mutant library was inoculated into 1 mL of human serum and incubated for 180 min and compared to before serum exposure input control. The output pool was washed with PBS and plated onto LB agar supplemented with kanamycin. Following overnight growth, $\sim 150,000$ colonies were recovered and pooled for sequencing. Comparative analysis using AlbaTraDIS software depicting genes with (B) decreased insertions suggesting a loss of fitness or (C) increased insertions suggesting a gain of fitness to serum exposure. (D) Transposon and read count insertion profiles of *hns* locus: red illustrating pooled mutant serum exposed for 180 min and blue denoting the before serum exposure input control. (E) Growth profile of WT *K. pneumoniae* ECL8 and $\Delta hns::aph$ in LB broth. Mean is plotted (± 1 SD), where $n=3$. (F) Serum killing assay of WT *K. pneumoniae* ECL8 and $\Delta hns::aph$. Mean is plotted (± 1 SD), where $n=3$.

In contrast to the limited number of genes in the urinome, the serum resistome consisted of more than 144 genes. This number is significantly greater than reports of a recent study that defined the serum resistome of four independent *K. pneumoniae* strains (22 [↗](#)). While that study found 93 genes that were required for survival in one or more strains, remarkably only three genes were common to all four strains: *rfaH*, *lpp* and *arnD*. Comparison with our dataset revealed that in contrast to *rfaH*, *arnD* was not required for serum resistance in *K. pneumoniae* ECL8. Surprisingly, comparison of our data with the 56 genes comprising the serum resistome of the more distantly related multidrug resistant *E. coli* strain EC958 revealed 14 genes in common. The variation in the outcome of these experiments can be accounted for in different ways. First, in all cases the genes encoding O-antigen and/or capsule synthesis were required for growth in normal human serum; As the genes encoding these surface structures vary with serotype, they are not identified as common genes, though ostensibly they have the same function. Second, the methodology appears at first glance to be identical in each study (growth in the presence of serum for 90 min). However, not all strains exhibit the same killing kinetics in normal human serum. Using fixed timepoints, strains with longer killing kinetics are likely to have fewer genes identified in TraDIS experiments, whereas strains with short killing windows will have more. Third, several of the genes identified in the serum resistome of other strains were excluded from our downstream analysis as there were fewer than 50 transposon insertions in the gene following exposure to heat-inactivated serum. A case in point is the *lpp* gene. This observation indicates that *lpp* is required for *K. pneumoniae* ECL8 growth in human serum but not resistance to complement dependent killing *per se*. Fourth, the density of the library used, the level of comparative annotation, and the thresholds to define significance, all have the potential to influence the final outcome of such experiments. Finally, strain-specific features such as gene duplication events, functional redundancy in biosynthetic pathways, and the variation in the genetic complement of each strain, are likely to influence the contribution each gene makes to serum resistance.

Despite the intra and interspecies variation in the serum resistome noted above, comparison of the urinome and serum resistome of *K. pneumoniae* ECL8 revealed that mutation of five genes (*ompA*, *galE*, *exbB*, *exbD* and *sodA*) conferred reduced fitness for both growth in urine and survival in serum. The role of *exbB* and *exbD* are described above but their detection in both experimental conditions reinforces the importance of iron acquisition for infection. The major outer membrane protein OmpA identified in this study encodes a functionally pleiotropic outer membrane protein (85 [↗](#), 86 [↗](#)). Notably, a role for OmpA in serum resistance has previously been described for *E. coli*, however it was not identified by TraDIS experiments investigating the serum resistome (23 [↗](#)). The molecular basis for this discrepancy remains unresolved. GalE is known to play a key role in serum resistance for *E. coli* and *Salmonella* spp.. The gene *galE* encodes a UDP-glucose 4-epimerase catalyzing the interconversion of UDP-D-galactose/UDP-D-glucose (92 [↗](#)). It has been previously reported that GalE plays a role in D-galactan II synthesis, an O1 LPS component in *K. pneumoniae* (93 [↗](#), 109 [↗](#)). These data suggest that loss of *galE* results in a modified LPS in *K. pneumoniae* resulting in increased serum susceptibility. Additionally, the manganese-dependent superoxide dismutase SodA converts superoxide to hydrogen peroxide and oxygen to prevent DNA and other cellular damage (110 [↗](#), 111 [↗](#)). A previous study in *K. pneumoniae* has reported the inducible expression of *sodA* in a triumvirate system with *sodB* and *sodC*, expressed in response to anaerobic challenge and high-oxygen concentration (112 [↗](#)). These transcriptional responses might very well be present in both the microenvironments of blood vessels and the bladder, in the form of nutrient limitation and oxygen exposure (113 [↗](#)–115 [↗](#)). Hence, the observed importance of *sodA* might be a consequence of elevated levels of reactive oxygen species (ROS) due to iron-acquisition and could represent a specialized metabolic adaptation for growth in these environments. Ultimately, these findings underline the interplay between bacterial iron homeostasis and oxidative stress previously reported in Gram-negative bacteria (116 [↗](#)–120 [↗](#)). However, these data shine a light on cross-niche (i.e. urine and serum) genes and associated pathways as suitable drug development targets to treat *Klebsiella* infections. Finally, this library was then used to identify genes conferring serum resistance. An interesting finding was the observed transposon insertion orientation bias into *gnd*. As the downstream transcriptional unit of

gnd are O-antigen related genes (i.e. biosynthesis and export), this in turn lends further credence to a transcriptional regulatory model where biosynthesis of O-antigen and capsule is coupled for biophysical reasons as has been previously reported (66 [↗](#), 120 [↗](#)). Collectively, these data show that O-antigen biosynthesis genes (i.e. *wabI* and *waalL*) play a contributing role in serum resistance whilst *hns* mutants were shown to be more resistant to serum killing than WT *K. pneumoniae* ECL8. However, the mechanism that underpins this resistance is still largely unknown and requires further characterization. Despite the previously described links between *hns* and the regulation of a selection of capsular genes (66 [↗](#), 99 [↗](#)), this is the first report of a role for *hns* in resisting complement-mediated killing in human serum.

This genome-wide screen has identified a suite of genetic fitness-factors required for growth of *K. pneumoniae* ECL8 in human urine and serum. The defined ECL8 urine and serum resistance gene sets from this study differ from other TraDIS studies, hinting that the genotype of different pathogenic lineages might only be a piece in understanding the underlying infection biology. Future studies like these but expanding to other isolates, and the lesser studied clinically relevant *K. pneumoniae* species complex (KpSc), will be imperative for the effective future development of targeted therapeutics towards this problematic pathogen.

Supporting information captions

Figure S1: (A) Pearson correlation coefficient (R^2) of gene insertion index scores (IIS) of two sequenced technical replicates of the *Klebsiella pneumoniae* ECL8 TraDIS library (KTL1 and KTL2). The IIS of genes located on the chromosome and plasmid are highlighted in blue and red respectively. (B) Number of unique reads identified (%) in the raw fastQ file of the *K. pneumoniae* TraDIS library in sequentially larger k-mer pools up to three million reads. Plot generated using BBTools: `bbcountunique.sh` in non-cumulative mode (<https://jgi.doe.gov/data-and-tools/bbtools/> [↗](#))

Figure S2 Sequencing depth of the *K. pneumoniae* ECL8 plasmid (black) relative to the *K. pneumoniae* ECL8 chromosome (green). The plasmid has a read depth 1.33x that of the genome suggesting the plasmid has a copy number of one. Figure generated using Bandage (v3).

Figure S3 The frequency distribution of insertion index scores. The insertion index score for each coding sequence was calculated as the number of insertions per CDS divided by the CDS length in base pairs to normalize for gene length. An exponential distribution model was fitted to the left mode that includes essential genes, and a gamma distribution model was fitted to the right, nonessential mode (blue). For a given insertion index score, the probability of belonging to each mode was calculated, and the ratio of these values was the log likelihood score. A gene was classified as essential if its log likelihood score was less than $\log_2 12$ and was therefore 12 times more likely to belong to the red mode than the blue mode.

Figure S4 The COG Enrichment index comprising 373 genes classified as essential in *K. pneumoniae* ECL8. This index is calculated as the percentage of the essential genome made up of a COG divided by the percentage of the whole genome made up by the same COG. The \log^2 fold enrichment is displayed, and significant differences were calculated using the two-tailed Fisher's exact test. Annotations were computed using eggNOG-mapper based on eggNOG orthology data (2 [↗](#))

Figure S5 Mathematical simulation (10^5 instances) of random transposon insertion events under the null model of random insertion previously described (3 [↗](#)). The probability of at least one insertion free region (IFR) of length (l) occurring in a genome of 5.3 Mb containing 554,834 transposon insertions (blue). Genome length and no. of genome-wide insertions from TraDIS studies by Langridge *et al.*, 2012 and Goodall *et al.*, 2018 plotted for comparison (3 [↗](#), 4 [↗](#)).

Figure S6 Sequencing depth required to sample a given proportion of the *K. pneumoniae* TraDIS library (A) The following equation: $UIPs = s \cdot s \left(\frac{c-1}{s}\right)^n$ was applied to calculate the approximate number of sequence reads required to sample full library diversity i.e. 100% of Unique Insertion Points (UIPs). UIPs = Unique Insertion Points, n = number of mapped reads in millions (M) and s = sample size i.e. 499,919 CDS UIPs (B) The approximate number of CDS UIPs represented by a given number of sequence reads (M) are shown as a percentage of the total CDS UIPs i.e. 499,919.

Figure S7 The Pearson correlation coefficient (R^2) of gene insertion index scores (IIS) for two sequenced biological replicates of the *K. pneumoniae* ECL8 TraDIS library following three 12 h passages in (blue) LB broth or (red) pooled human urine. The inline barcode identifiers used to demultiplex and distinguish replicates are highlighted in brackets ().

Figure S8 Serum killing assay of *K. pneumoniae* ECL8 and *E. coli* BW25113. A sample of 2×10^8 bacterial cells were incubated in 100 μ L of human serum (solid line) or heat-inactivated human serum (dashed line) for 180 min. Viable bacterial numbers (cfu/ml) were sampled at regular time points by plating onto LB agar, overnight incubation at 37 °C and subsequent counting of the colonies. The log₁₀ fold change in viable cell number was measured. *E. coli* BW25113 lacks O-antigen and was used as a serum sensitive control. The mean of three biological replicates is shown \pm 1 SD.

Figure S9 The Pearson correlation coefficient (R^2) of gene insertion index scores (IIS) for two sequenced biological replicates of the *K. pneumoniae* ECL8 TraDIS library following 90 min exposure to (blue) Heat-inactivated serum or (red) Serum. The inline barcodes used to demultiplex and distinguish replicates are given in brackets ().

Figure S10 Pearson correlation coefficient (R^2) of two biological replicates from the output TraDIS library following exposure to human serum for 180 min.

Figure S11 Serum killing assay of WT *K. pneumoniae* ECL8, hns7::Tn5 and hns18::Tn5. Overnight cultures of bacterial cells were incubated in a 1:1 ratio (2×10^8 cells : human serum) in a final volume of 100 μ L. Viable bacterial numbers (CFU/mL) at 360 min timepoint was calculated by plating onto LB agar, overnight incubation at 37°C and subsequent counting of the colonies with a PBS control performed in parallel. The mean of three biological replicates is shown \pm 1 SD

Figure S12 (A) Transposon and read count insertion profiles of hns locus: red illustrating pooled mutant serum exposed for 180 min and blue denoting the before serum exposure input control. (B) Directional insertion bias of transposon (Tn) into *gnd*. Transposon insertions configured in the forward orientation (green), reverse orientation (blue). Transposon insertion densities are capped at a maximum read depth of 2000. Below – genomic context of *gnd* with a putative promoter for *manC* driving the transcriptional unit (*rfb* cluster) for O-antigen biosynthesis.

Dataset S1 Essential gene table ECL8

Dataset S2 Insertion Free Regions (IFR) within ECL8 (LB)

Dataset S3 Dataset S3_Essential Gene Comparison against ECL8

Dataset S4 Essential gene table ECL8 (Urine)

Dataset S5 Essential gene table ECL8 (Serum)

Dataset S6 Kaptive webserver results - ECL8 O-antigen K-antigen

Dataset S7 AlbaTraDIS ECL8 180 Serum exposure results

References

1. Bagley ST (1985) **Habitat association of Klebsiella species** *Infect Control* **6**:52–8
2. Holt KE *et al.* (2015) **Genomic analysis of diversity, population structure, virulence, and antimicrobial resistance in Klebsiella pneumoniae, an urgent threat to public health** *Proc Natl Acad Sci U S A* **112**:E3574–81
3. Podschun R, Ullmann U (1998) **Klebsiella spp. as nosocomial pathogens: epidemiology, taxonomy, typing methods, and pathogenicity factors** *Clin Microbiol Rev* **11**:589–603
4. Ko WC *et al.* (2002) **Community-acquired Klebsiella pneumoniae bacteremia: global differences in clinical patterns** *Emerg Infect Dis* **8**:160–6
5. Goncalves Barbosa LC, Silva ESJA, Bordononi GP, Barbosa GO, Carneiro LC (2022) **Elevated Mortality Risk from CRKp Associated with Comorbidities: Systematic Review and Meta-Analysis** *Antibiotics (Basel)* **11**
6. Tumbarello M *et al.* (2015) **Infections caused by KPC-producing Klebsiella pneumoniae: differences in therapy and mortality in a multicentre study** *J Antimicrob Chemother* **70**:2133–43
7. Clegg S, Murphy CN (2016) **Epidemiology and Virulence of Klebsiella pneumoniae** *Microbiol Spectr* **4**
8. Paczosa MK, Meccas J (2016) **Klebsiella pneumoniae: Going on the Offense with a Strong Defense** *Microbiol Mol Biol Rev* **80**:629–61
9. Ikuta KS *et al.* (2022) **Global mortality associated with 33 bacterial pathogens in 2019: a systematic analysis for the Global Burden of Disease Study 2019** *The Lancet* **400**:2221–2248
10. Pham MH *et al.* (2023) **Evidence of widespread endemic populations of highly multidrug resistant Klebsiella pneumoniae in hospital settings in Hanoi, Vietnam: a prospective cohort study** *The Lancet Microbe* **4**:e255–e263
11. Navon-Venezia S, Kondratyeva K, Carattoli A (2017) **Klebsiella pneumoniae: a major worldwide source and shuttle for antibiotic resistance** *FEMS Microbiol Rev* **41**:252–275
12. Garbati MA, Al Godhair AI (2013) **The growing resistance of Klebsiella pneumoniae; the need to expand our antibiogram: case report and review of the literature** *Afr J Infect Dis* **7**:8–10
13. Campos AC, Albiero J, Ecker AB, Kuroda CM, Meirelles LE, Polato A, Tognim MC, Wingeter MA, Teixeira JJ (2016) **Outbreak of Klebsiella pneumoniae carbapenemase-producing K pneumoniae: A systematic review** *Am J Infect Control* **44**:1374–1380
14. Rojas LJ *et al.* (2017) **Colistin Resistance in Carbapenem-Resistant Klebsiella pneumoniae: Laboratory Detection and Impact on Mortality** *Clin Infect Dis* **64**:711–718
15. Cain AK, Barquist L, Goodman AL, Paulsen IT, Parkhill J, van Opijnen T (2020) **A decade of advances in transposon-insertion sequencing** *Nat Rev Genet* **21**:526–540

16. Barquist L, Mayho M, Cummins C, Cain AK, Boinett CJ, Page AJ, Langridge GC, Quail MA, Keane JA, Parkhill J (2016) **The TraDIS toolkit: sequencing and analysis for dense transposon mutant libraries** *Bioinformatics* **32**:1109–11
17. Wyres KL, Lam MMC, Holt KE (2020) **Population genomics of *Klebsiella pneumoniae*** *Nat Rev Microbiol* **18**:344–359
18. Marques C, Menezes J, Belas A, Aboim C, Cavaco-Silva P, Trigueiro G, Telo Gama L, Pomba C (2019) ***Klebsiella pneumoniae* causing urinary tract infections in companion animals and humans: population structure, antimicrobial resistance and virulence genes** *J Antimicrob Chemother* **74**:594–602
19. Bengoechea JA, Sa Pessoa J (2019) ***Klebsiella pneumoniae* infection biology: living to counteract host defences** *FEMS Microbiol Rev* **43**:123–144
20. Choi M *et al.* (2020) **The Diversity of Lipopolysaccharide (O) and Capsular Polysaccharide (K) Antigens of Invasive *Klebsiella pneumoniae* in a Multi-Country Collection** *Front Microbiol* **11**
21. Martin RM, Bachman MA (2018) **Colonization, Infection, and the Accessory Genome of *Klebsiella pneumoniae*** *Front Cell Infect Microbiol* **8**
22. Short FL, Di Sario G, Reichmann NT, Kleanthous C, Parkhill J, Taylor PW (2020) **Genomic Profiling Reveals Distinct Routes To Complement Resistance in *Klebsiella pneumoniae*** *Infect Immun* **88**
23. Phan MD *et al.* (2013) **The serum resistome of a globally disseminated multidrug resistant uropathogenic *Escherichia coli* clone** *PLoS Genet* **9**
24. McCarthy AJ, Taylor PW (2022) **Analysis of *Escherichia coli* K1 Virulence Genes by Transposon-Directed Sequencing** *Methods Mol Biol* **2377**:199–213
25. Ondari EM, Klemm EJ, Msefula CL, El Ghany MA, Heath JN, Pickard DJ, Barquist L, Dougan G, Kingsley RA, MacLennan CA (2019) **Rapid transcriptional responses to serum exposure are associated with sensitivity and resistance to antibody-mediated complement killing in invasive *Salmonella Typhimurium* ST313** *Wellcome Open Res* **4**
26. Subashchandrabose S, Smith S, DeOrnellas V, Crepin S, Kole M, Zahdeh C, Mobley HL (2016) ***Acinetobacter baumannii* Genes Required for Bacterial Survival during Bloodstream Infection** *mSphere* **1**
27. Goodall ECA, Robinson A, Johnston IG, Jabbari S, Turner KA, Cunningham AF, Lund PA, Cole JA, Henderson IR (2018) **The Essential Genome of *Escherichia coli* K-12** *mBio* **9**
28. Fabian BK, Foster C, Asher AJ, Elbourne LDH, Cain AK, Hassan KA, Tetu SG, Paulsen IT (2021) **Elucidating Essential Genes in Plant-Associated *Pseudomonas protegens* Pf-5 Using Transposon Insertion Sequencing** *J Bacteriol* **203**
29. Wong YC, Abd El Ghany M, Naeem R, Lee KW, Tan YC, Pain A, Nathan S (2016) **Candidate Essential Genes in *Burkholderia cenocepacia* J2315 Identified by Genome-Wide TraDIS** *Front Microbiol* **7**

30. Ramage B, Erolin R, Held K, Gasper J, Weiss E, Brittnacher M, Gallagher L, Manoil C (2017) **Comprehensive Arrayed Transposon Mutant Library of *Klebsiella pneumoniae* Outbreak Strain KPNIH1** *J Bacteriol* **199**
31. DeJesus MA *et al.* (2017) **Comprehensive Essentiality Analysis of the *Mycobacterium tuberculosis* Genome via Saturating Transposon Mutagenesis** *mBio* **8**
32. Ebert M, Laass S, Burghartz M, Petersen J, Kossmehl S, Wohlbrand L, Rabus R, Wittmann C, Tielen P, Jahn D (2013) **Transposon mutagenesis identified chromosomal and plasmid genes essential for adaptation of the marine bacterium *Dinoroseobacter shibae* to anaerobic conditions** *J Bacteriol* **195**:4769–77
33. Hardy L, Juan PA, Coupat-Goutaland B, Charpentier X (2021) **Transposon Insertion Sequencing in a Clinical Isolate of *Legionella pneumophila* Identifies Essential Genes and Determinants of Natural Transformation** *J Bacteriol* **203**
34. Armbruster CE, Forsyth-DeOrnellas V, Johnson AO, Smith SN, Zhao L, Wu W, Mobley HLT (2017) **Genome-wide transposon mutagenesis of *Proteus mirabilis*: Essential genes, fitness factors for catheter-associated urinary tract infection, and the impact of polymicrobial infection on fitness requirements** *PLoS Pathog* **13**
35. Roth M, Goodall ECA, Pullela K, Jaquet V, François P, Henderson IR, Krause KH (2022) **Transposon-Directed Insertion-Site Sequencing Reveals Glycolysis Gene *gpmA* as Part of the H₂O₂ Defense Mechanisms in *Escherichia coli*** *Antioxidants (Basel)* **11**
36. Winkle M, Hernández-Rocamora VM, Pullela K, Goodall ECA, Martorana AM, Gray J, Henderson IR, Polissi A, Vollmer W (2021) **DpaA Detaches Braun's Lipoprotein from Peptidoglycan** *mBio* **12**
37. Goodall ECA *et al.* (2021) **Loss of YhcB results in dysregulation of coordinated peptidoglycan, LPS and phospholipid synthesis during *Escherichia coli* cell growth** *PLOS Genetics* **17**
38. Hoashi K, Harada S, Ishii Y, Aoki K, Ishikawa S, Oshiro Y, Shinzato T (2019) **Community-acquired liver abscess caused by capsular genotype K2-ST375 hypervirulent *Klebsiella pneumoniae* isolates** *IDCases* **17**
39. Connor TR *et al.* (2016) **CLIMB (the Cloud Infrastructure for Microbial Bioinformatics): an online resource for the medical microbiology community** *Microb Genom* **2**
40. Rutherford K, Parkhill J, Crook J, Horsnell T, Rice P, Rajandream MA, Barrell B (2000) **Artemis: sequence visualization and annotation** *Bioinformatics* **16**:944–5
41. Langridge GC *et al.* (2009) **Simultaneous assay of every *Salmonella Typhi* gene using one million transposon mutants** *Genome Res* **19**:2308–16
42. Shen W, Le S, Li Y, Hu F (2016) **SeqKit: A Cross-Platform and Ultrafast Toolkit for FASTA/Q File Manipulation** *PLoS One* **11**
43. Cock PJ, Chilton JM, Gruning B, Johnson JE, Soranzo N (2015) **NCBI BLAST+ integrated into Galaxy** *Gigascience* **4**
44. Liu D, Zhang Y, Fan G, Sun D, Zhang X, Yu Z, Wang J, Wu L, Shi W, Ma J (2022) **IPGA: A handy integrated prokaryotes genome and pan-genome analysis web service** *iMeta* **1**

45. Shi W *et al.* (2020) **gcType: a high-quality type strain genome database for microbial phylogenetic and functional research** *Nucleic Acids Research* **49**:D694–D705
46. Page AJ, Bastkowski S, Yasir M, Turner AK, Le Viet T, Savva GM, Webber MA, Charles IG (2020) **AlbaTraDIS: Comparative analysis of large datasets from parallel transposon mutagenesis experiments** *PLoS Comput Biol* **16**
47. Datsenko KA, Wanner BL (2000) **One-step inactivation of chromosomal genes in Escherichia coli K-12 using PCR products** *Proc Natl Acad Sci U S A* **97**:6640–5
48. Wick RR, Schultz MB, Zobel J, Holt KE (2015) **Bandage: interactive visualization of de novo genome assemblies** *Bioinformatics* **31**:3350–2
49. Huerta-Cepas J *et al.* (2019) **eggNOG 5.0: a hierarchical, functionally and phylogenetically annotated orthology resource based on 5090 organisms and 2502 viruses** *Nucleic Acids Res* **47**:D309–D314
50. Christen B, Abeliuk E, Collier JM, Kalogeraki VS, Passarelli B, Collier JA, Fero MJ, McAdams HH, Shapiro L (2011) **The essential genome of a bacterium** *Mol Syst Biol* **7**
51. Grazziotin AL, Vidal NM, Venancio TM (2015) **Uncovering major genomic features of essential genes in Bacteria and a methanogenic Archaea** *FEBS J* **282**:3395–3411
52. Barquist L, Langridge GC, Turner DJ, Phan MD, Turner AK, Bateman A, Parkhill J, Wain J, Gardner PP (2013) **A comparison of dense transposon insertion libraries in the Salmonella serovars Typhi and Typhimurium** *Nucleic Acids Res* **41**:4549–64
53. Tang HL, Chiang MK, Liou WJ, Chen YT, Peng HL, Chiou CS, Liu KS, Lu MC, Tung KC, Lai YC (2010) **Correlation between Klebsiella pneumoniae carrying pLVPK-derived loci and abscess formation** *Eur J Clin Microbiol Infect Dis* **29**:689–98
54. Rodriguez-Medina N, Martinez-Romero E, De la Cruz MA, Ares MA, Valdovinos-Torres H, Silva-Sanchez J, Lozano-Aguirre L, Martinez-Barnette J, Andrade V, Garza-Ramos U (2020) **A Klebsiella variicola Plasmid Confers Hypermucoviscosity-Like Phenotype and Alters Capsule Production and Virulence** *Front Microbiol* **11**
55. Yang X, Dong N, Liu X, Yang C, Ye L, Chan EW, Zhang R, Chen S (2021) **Co-conjugation of Virulence Plasmid and KPC Plasmid in a Clinical Klebsiella pneumoniae Strain** *Front Microbiol* **12**
56. Joyce CM, Grindley ND (1984) **Method for determining whether a gene of Escherichia coli is essential: application to the polA gene** *J Bacteriol* **158**:636–43
57. Gallagher LA, Bailey J, Manoil C (2020) **Ranking essential bacterial processes by speed of mutant death** *Proc Natl Acad Sci U S A* **117**:18010–18017
58. Warren AS, Archuleta J, Feng WC, Setubal JC (2010) **Missing genes in the annotation of prokaryotic genomes** *BMC Bioinformatics* **11**
59. Mat-Sharani S, Firdaus-Raih M (2019) **Computational discovery and annotation of conserved small open reading frames in fungal genomes** *BMC Bioinformatics* **19**

60. Miravet-Verde S, Ferrar T, Espadas-Garcia G, Mazzolini R, Gharrab A, Sabido E, Serrano L, Lluch-Senar M (2019) **Unraveling the hidden universe of small proteins in bacterial genomes** *Mol Syst Biol* **15**
61. Hutchison CA, Merryman C, Sun L, Assad-Garcia N, Richter RA, Smith HO, Glass JI (2019) **Polar Effects of Transposon Insertion into a Minimal Bacterial Genome** *J Bacteriol* **201**
62. Lam MMC, Wick RR, Judd LM, Holt KE, Wyres KL (2022) **Kaptive 2.0: updated capsule and lipopolysaccharide locus typing for the *Klebsiella pneumoniae* species complex** *Microb Genom* **8**
63. Pain A, Ott A, Amine H, Rochat T, Bouloc P, Gautheret D (2015) **An assessment of bacterial small RNA target prediction programs** *RNA Biol* **12**:509–13
64. Waters LS, Storz G (2009) **Regulatory RNAs in bacteria** *Cell* **136**:615–28
65. Jana B, Cain AK, Doerrler WT, Boinett CJ, Fookes MC, Parkhill J, Guardabassi L (2017) **The secondary resistome of multidrug-resistant *Klebsiella pneumoniae*** *Sci Rep* **7**
66. Dorman MJ, Feltwell T, Goulding DA, Parkhill J, Short FL (2018) **The Capsule Regulatory Network of *Klebsiella pneumoniae* Defined by density-TraDISort** *mBio* **9**
67. Jung HJ *et al.* (2019) **Genome-Wide Screening for Enteric Colonization Factors in Carbapenem-Resistant ST258 *Klebsiella pneumoniae*** *mBio* **10**
68. Paczosa MK, Silver RJ, McCabe AL, Tai AK, McLeish CH, Lazinski DW, Meccas J (2020) **Transposon Mutagenesis Screen of *Klebsiella pneumoniae* Identifies Multiple Genes Important for Resisting Antimicrobial Activities of Neutrophils in Mice** *Infect Immun* **88**
69. Ma P, He LL, Pironti A, Laibinis HH, Ernst CM, Manson AL, Bhattacharyya RP, Earl AM, Livny J, Hung DT (2021) **Genetic determinants facilitating the evolution of resistance to carbapenem antibiotics** *Elife* **10**
70. Bruchmann S, Feltwell T, Parkhill J, Short FL (2021) **Identifying virulence determinants of multidrug-resistant *Klebsiella pneumoniae* in *Galleria mellonella*** *Pathog Dis* **79**
71. Gorrie CL *et al.* (2022) **Genomic dissection of *Klebsiella pneumoniae* infections in hospital patients reveals insights into an opportunistic pathogen** *Nature Communications* **13**
72. Feldman MF, Mayer Bridwell AE, Scott NE, Vinogradov E, McKee SR, Chavez SM, Twentyman J, Stallings CL, Rosen DA, Harding CM (2019) **A promising bioconjugate vaccine against hypervirulent *Klebsiella pneumoniae*** *Proceedings of the National Academy of Sciences* **116**:18655–18663
73. Lin T-L, Lee C-Z, Hsieh P-F, Tsai S-F, Wang J-T (2008) **Characterization of Integrative and Conjugative Element ICEKp1-Associated Genomic Heterogeneity in a *Klebsiella pneumoniae* Strain Isolated from a Primary Liver Abscess** *Journal of Bacteriology* **190**:515–526
74. Chhibber S, Kaur S, Kumari S (2008) **Therapeutic potential of bacteriophage in treating *Klebsiella pneumoniae* B5055-mediated lobar pneumonia in mice** *Journal of Medical Microbiology* **57**:1508–1513

75. Chao MC, Abel S, Davis BM, Waldor MK (2016) **The design and analysis of transposon insertion sequencing experiments** *Nat Rev Microbiol* **14**:119–28
76. Lampe DJ, Churchill ME, Robertson HM (1996) **A purified mariner transposase is sufficient to mediate transposition in vitro** *EMBO J* **15**:5470–9
77. Mas G, Thoma J, Hiller S (2019) **The Periplasmic Chaperones Skp and SurA** *Subcell Biochem* **92**:169–186
78. Caza M, Kronstad JW (2013) **Shared and distinct mechanisms of iron acquisition by bacterial and fungal pathogens of humans** *Front Cell Infect Microbiol* **3**
79. Iwadate Y, Ramezanifard R, Golubeva YA, Fenlon LA, Slauch JM (2021) **PaeA (YtfL) protects from cadaverine and putrescine stress in Salmonella Typhimurium and E. coli** *Mol Microbiol* **115**:1379–1394
80. Xu Y, Liang Z, Legrain C, Ruger HJ, Glansdorff N (2000) **Evolution of arginine biosynthesis in the bacterial domain: novel gene-enzyme relationships from psychrophilic Moritella strains (Vibrionaceae) and evolutionary significance of N-alpha-acetyl ornithinase J** *Bacteriol* **182**:1609–15
81. Chambers ST, Lever M (1996) **Betaines and urinary tract infections** *Nephron* **74**:1–10
82. Chaturvedi KS, Hung CS, Crowley JR, Stapleton AE, Henderson JP (2012) **The siderophore yersiniabactin binds copper to protect pathogens during infection** *Nat Chem Biol* **8**:731–6
83. Cassat JE, Skaar EP (2013) **Iron in infection and immunity** *Cell Host Microbe* **13**:509–519
84. Banerjee R, Weisenhorn E, Schwartz KJ, Myers KS, Glasner JD, Perna NT, Coon JJ, Welch RA, Kiley PJ (2020) **Tailoring a Global Iron Regulon to a Uropathogen** *mBio* **11**
85. Huang SH, Wang CK, Peng HL, Wu CC, Chen YT, Hong YM, Lin CT (2012) **Role of the small RNA RyhB in the Fur regulon in mediating the capsular polysaccharide biosynthesis and iron acquisition systems in Klebsiella pneumoniae** *BMC Microbiol* **12**
86. Troxell B, Hassan HM (2013) **Transcriptional regulation by Ferric Uptake Regulator (Fur) in pathogenic bacteria** *Front Cell Infect Microbiol* **3**
87. Seo SW, Kim D, Latif H, O'Brien EJ, Szubin R, Palsson BO (2014) **Deciphering Fur transcriptional regulatory network highlights its complex role beyond iron metabolism in Escherichia coli** *Nat Commun* **5**
88. Doorduyn DJ, Heesterbeek DAC, Ruyken M, de Haas CJC, Stapels DAC, Aerts PC, Rooijackers SHM, Bardoel BW (2021) **Polymerization of C9 enhances bacterial cell envelope damage and killing by membrane attack complex pores** *PLOS Pathogens* **17**
89. Onsare RS *et al.* (2015) **Relationship between antibody susceptibility and lipopolysaccharide O-antigen characteristics of invasive and gastrointestinal nontyphoidal Salmonellae isolates from Kenya** *PLoS Negl Trop Dis* **9**
90. Salamon H, Nissim-Eliraz E, Ardronai O, Nissan I, Shpigel NY (2020) **The role of O-polysaccharide chain and complement resistance of Escherichia coli in mammary virulence** *Vet Res* **51**

91. Rai AK, Mitchell AM (2020) **Enterobacterial Common Antigen: Synthesis and Function of an Enigmatic Molecule** *mBio* **11**
92. Frirdich E, Whitfield C (2005) **Characterization of Gla(KP), a UDP-galacturonic acid C4-epimerase from *Klebsiella pneumoniae* with extended substrate specificity** *J Bacteriol* **187**:4104–15
93. Ramos PI, Picao RC, Vespero EC, Pelisson M, Zuleta LF, Almeida LG, Gerber AL, Vasconcelos AT, Gales AC, Nicolas MF (2012) **Pyrosequencing-based analysis reveals a novel capsular gene cluster in a KPC-producing *Klebsiella pneumoniae* clinical isolate identified in Brazil** *BMC Microbiol* **12**
94. Yeow J, Tan KW, Holdbrook DA, Chong ZS, Marzinek JK, Bond PJ, Chng SS (2018) **The architecture of the OmpC-MlaA complex sheds light on the maintenance of outer membrane lipid asymmetry in *Escherichia coli*** *J Biol Chem* **293**:11325–11340
95. Tan BK, Bogdanov M, Zhao J, Dowhan W, Raetz CR, Guan Z (2012) **Discovery of a cardiolipin synthase utilizing phosphatidylethanolamine and phosphatidylglycerol as substrates** *Proc Natl Acad Sci U S A* **109**:16504–9
96. Rigel NW, Schwalm J, Ricci DP, Silhavy TJ (2012) **BamE modulates the *Escherichia coli* beta-barrel assembly machine component BamA** *J Bacteriol* **194**:1002–8
97. Nguyen D, Kelly K, Qiu N, Misra R (2020) **YejM Controls LpxC Levels by Regulating Protease Activity of the FtsH/YciM Complex of *Escherichia coli*** *J Bacteriol* **202**
98. Hsieh PF, Wu MC, Yang FL, Chen CT, Lou TC, Chen YY, Wu SH, Sheu JC, Wang JT (2014) **D-galactan II is an immunodominant antigen in O1 lipopolysaccharide and affects virulence in *Klebsiella pneumoniae*: implication in vaccine design** *Front Microbiol* **5**
99. Ares MA, Fernández-Vázquez JL, Rosales-Reyes R, Jarillo-Quijada MD, von Bargen K, Torres J, González-y-Merchand JA, Alcántar-Curiel MD, De la Cruz MA (2016) **H-NS Nucleoid Protein Controls Virulence Features of *Klebsiella pneumoniae* by Regulating the Expression of Type 3 Pili and the Capsule Polysaccharide** *Front Cell Infect Microbiol* **6**
100. Sledjeski D, Gottesman S (1995) **A small RNA acts as an antisilencer of the H-NS-silenced rcsA gene of *Escherichia coli*** *Proc Natl Acad Sci U S A* **92**:2003–7
101. Ebel W, Trempy JE (1999) ***Escherichia coli* RcsA, a positive activator of colanic acid capsular polysaccharide synthesis, functions To activate its own expression** *J Bacteriol* **181**:577–84
102. Meng J, Young G, Chen J (2021) **The Rcs System in Enterobacteriaceae: Envelope Stress Responses and Virulence Regulation** *Frontiers in Microbiology* **12**
103. Follador R, Heinz E, Wyres KL, Ellington MJ, Kowarik M, Holt KE, Thomson NR (2016) **The diversity of *Klebsiella pneumoniae* surface polysaccharides** *Microbial Genomics* **2**
104. Choe D, Kim U, Hwang S, Seo SW, Kim D, Cho S, Palsson B, Cho B-K (2023) **Revealing Causes for False-Positive and False-Negative Calling of Gene Essentiality in *Escherichia coli* Using Transposon Insertion Sequencing** *mSystems* **8**:e00896–22
105. Butaite E, Baumgartner M, Wyder S, Kummerli R (2017) **Siderophore cheating and cheating resistance shape competition for iron in soil and freshwater *Pseudomonas* communities** *Nat Commun* **8**

106. Holden VI, Bachman MA (2015) **Diverging roles of bacterial siderophores during infection** *Metallomics* **7**:986–95
107. Mataigne V, Vannier N, Vandenkoornhuysse P, Hacquard S (2021) **Microbial Systems Ecology to Understand Cross-Feeding in Microbiomes** *Frontiers in Microbiology* **12**
108. Goh YF *et al.* (2023) **Associational Resistance to Predation by Protists in a Mixed Species Biofilm** *Applied and Environmental Microbiology* **89**:e01741–22
109. Clarke BR, Whitfield C (1992) **Molecular cloning of the rfb region of Klebsiella pneumoniae serotype O1:K20: the rfb gene cluster is responsible for synthesis of the D-galactan I O polysaccharide** *J Bacteriol* **174**:4614–21
110. Touati D (1983) **Cloning and mapping of the manganese superoxide dismutase gene (sodA) of Escherichia coli K-12** *J Bacteriol* **155**:1078–87
111. Doukyu N, Taguchi K (2021) **Involvement of catalase and superoxide dismutase in hydrophobic organic solvent tolerance of Escherichia coli** *AMB Express* **11**
112. Najmuldeen H, Alghamdi R, Alghofaili F, Yesilkaya H (2019) **Functional assessment of microbial superoxide dismutase isozymes suggests a differential role for each isozyme** *Free Radic Biol Med* **134**:215–228
113. Flores-Mireles AL, Walker JN, Caparon M, Hultgren SJ (2015) **Urinary tract infections: epidemiology, mechanisms of infection and treatment options** *Nat Rev Microbiol* **13**:269–84
114. Murdoch CC, Skaar EP (2022) **Nutritional immunity: the battle for nutrient metals at the host-pathogen interface** *Nat Rev Microbiol* **20**:657–670
115. Eberly AR, Floyd KA, Beebout CJ, Colling SJ, Fitzgerald MJ, Stratton CW, Schmitz JE, Hadjifrangiskou M (2017) **Biofilm Formation by Uropathogenic Escherichia coli Is Favored under Oxygen Conditions That Mimic the Bladder Environment** *Int J Mol Sci* **18**
116. Cornelis P, Wei Q, Andrews SC, Vinckx T (2011) **Iron homeostasis and management of oxidative stress response in bacteria** *Metallomics* **3**:540–9
117. Adler C, Corbalan NS, Peralta DR, Pomares MF, de Cristobal RE, Vincent PA (2014) **The alternative role of enterobactin as an oxidative stress protector allows Escherichia coli colony development** *PLoS One* **9**
118. Peralta DR, Adler C, Corbalan NS, Paz Garcia EC, Pomares MF, Vincent PA (2016) **Enterobactin as Part of the Oxidative Stress Response Repertoire** *PLoS One* **11**
119. Guest RL, Court EA, Waldon JL, Schock KA, Raivio TL (2019) **Impaired Efflux of the Siderophore Enterobactin Induces Envelope Stress in Escherichia coli** *Front Microbiol* **10**
120. Singh S *et al.* (2022) **LPS O Antigen Plays a Key Role in Klebsiella pneumoniae Capsule Retention** *Microbiology Spectrum* **10**:e01517–21

Article and author information

Jessica Gray

Institute for Molecular Bioscience, University of Queensland, St. Lucia, Queensland, Australia,
Institute of Microbiology and Infection, University of Birmingham, Birmingham, United Kingdom

Von Vergel L Torres

Institute for Molecular Bioscience, University of Queensland, St. Lucia, Queensland, Australia
ORCID iD: [0000-0003-3387-1112](https://orcid.org/0000-0003-3387-1112)

Emily CA Goodall

Institute for Molecular Bioscience, University of Queensland, St. Lucia, Queensland, Australia
ORCID iD: [0000-0003-4846-6566](https://orcid.org/0000-0003-4846-6566)

Samantha A McKeand

Institute of Microbiology and Infection, University of Birmingham, Birmingham, United Kingdom
ORCID iD: [0000-0001-5579-7422](https://orcid.org/0000-0001-5579-7422)

Danielle Scales

Institute of Microbiology and Infection, University of Birmingham, Birmingham, United Kingdom

Christy Collins

Institute of Microbiology and Infection, University of Birmingham, Birmingham, United Kingdom

Laura Wetherall

Institute of Microbiology and Infection, University of Birmingham, Birmingham, United Kingdom

Zheng Jie Lian

Institute for Molecular Bioscience, University of Queensland, St. Lucia, Queensland, Australia
ORCID iD: [0000-0002-3054-1866](https://orcid.org/0000-0002-3054-1866)

Jack A Bryant

Institute of Microbiology and Infection, University of Birmingham, Birmingham, United Kingdom

Matthew T Milner

Institute of Microbiology and Infection, University of Birmingham, Birmingham, United Kingdom

Karl A Dunne

Institute of Microbiology and Infection, University of Birmingham, Birmingham, United Kingdom

Chris Icke

Institute for Molecular Bioscience, University of Queensland, St. Lucia, Queensland, Australia
ORCID iD: [0000-0002-7815-8591](https://orcid.org/0000-0002-7815-8591)

Jessica L Rooke

Institute for Molecular Bioscience, University of Queensland, St. Lucia, Queensland, Australia
ORCID iD: [0000-0003-1258-4018](https://orcid.org/0000-0003-1258-4018)

Thamarai Schneiders

Division of Infection Medicine, University of Edinburgh, Edinburgh, United Kingdom
ORCID iD: [0000-0002-7758-7925](https://orcid.org/0000-0002-7758-7925)

Peter A Lund

Institute of Microbiology and Infection, University of Birmingham, Birmingham, United Kingdom
ORCID iD: [0000-0002-6381-8526](https://orcid.org/0000-0002-6381-8526)

Adam F Cunningham

Institute of Immunology and Immunotherapy, University of Birmingham, Birmingham, United Kingdom
ORCID iD: [0000-0003-0248-964X](https://orcid.org/0000-0003-0248-964X)

Jeffrey A Cole

Institute of Microbiology and Infection, University of Birmingham, Birmingham, United Kingdom

Ian R Henderson

Institute for Molecular Bioscience, University of Queensland, St. Lucia, Queensland, Australia
For correspondence: i.henderson@uq.edu.au
ORCID iD: [0000-0002-9954-4977](https://orcid.org/0000-0002-9954-4977)

Copyright

© 2023, Gray et al.

This article is distributed under the terms of the [Creative Commons Attribution License](https://creativecommons.org/licenses/by/4.0/), which permits unrestricted use and redistribution provided that the original author and source are credited.

Editors

Reviewing Editor

Karina Xavier

Instituto Gulbenkian de Ciência, Oeiras, Portugal

Senior Editor

Bavesh Kana

University of the Witwatersrand, Johannesburg, South Africa

Reviewer #1 (Public Review):

The study provides strong evidence that some genes are conditionally essential in urine because of iron limitation.

The authors raise the intriguing possibility that some mutants can "cheat" by benefitting from the surrounding cells that are phenotypically wild-type. The authors make it clear that the proposed cheating mechanism is speculation, but there is a missed opportunity to test this hypothesis. I did not understand the authors' rationale for not doing this experiment.

In cases where there are disparities between studies, e.g., for genes inferred to be essential for serum resistance, it would be informative to test individual deletions for genes described as essential in only one study. The authors argue this is beyond the scope of the study. Their conclusions of the study are not impacted by the absence of these experiments, but readers will be left wondering which lists of conditionally essential genes are correct, or whether there are strain-dependent or condition-dependent contexts that influence conditional essentiality.

<https://doi.org/10.7554/eLife.88971.2.sa1>

Reviewer #3 (Public Review):

In this study Gray and coworkers use a transposon mutant library in order to define: (i) essential genes for *K. pneumoniae* growth in LB medium, (ii) genes required for growth in urine, (iii) genes required for resistance to serum and complement mediated killing. Although there are previous studies, using a similar strategy, to describe essential genes for *K. pneumoniae* growth and genes required for serum resistance, this is the first work to perform such a study in urine. This is important because these types of pathogens can cause urinary tract infections. Moreover, the authors performed the work using a highly saturated library of mutants, which makes the results more robust, and used a clinically relevant strain from a pathotype for which similar studies have not been performed yet. Besides applying the transposon mutant library coupled with high-throughput sequencing, the authors validate some of the most relevant genes required for each condition using targeted mutagenesis. This is an important step to confirm that the results obtained from the library are reliable. Although this was done for only a small subset of the most significant genes. In addition, *in vitro* experiments involving complementation of urine with iron provide additional support to the results obtained with the mutants suggesting the importance of genes required for iron acquisition in a limiting-iron environment such as urine. Overall, the study is well-designed and written, and the methodology and analysis performed are adequate. The study would have benefited from *in vivo* experiments, including a mouse model of bacterial sepsis or urinary tract infections which could have demonstrated the role of some of the identified genes in the infection process. Nevertheless, the results obtained are informative for the scientific community since they pinpoint genes potentially more relevant in infections caused by *K. pneumoniae*. The identified genes could represent future targets for developing new therapies against a type of pathogen that is acquiring resistance to all available antibiotics. Although, as mentioned above, these potential targets should be confirmed using *in vivo* models.

One potential weakness of the work is that the TnSeq analysis only included two replicates per condition, thus it is possible that some of the differences detected may not be reproducible in future studies, first of all those that are less significant. In this sense, hundreds of genes were detected to be theoretically relevant for bacterial resistance to complement in serum. It is possible that some of these genes represent false positives. Thus,

confirmation of the relevance of these genes in resistance to complement should be performed in future studies.

<https://doi.org/10.7554/eLife.88971.2.sa0>

Author response:

The following is the authors' response to the original reviews.

Reviewer #1 (Public Review):

(1) The data strongly suggest that iron depletion in urine leads to conditional essentiality of some genes. It would be informative to test the single gene deletions (Figure 3G) for growth in urine supplemented with iron, to determine how many of those genes support growth in urine due to iron limitation.

We appreciate this suggestion. We have now included this suggested experiment as a new panel (Figure 5G).

*(2) Line 641. The authors raise the intriguing possibility that some mutants can "cheat" by benefitting from the surrounding cells that are phenotypically wild-type. Growing a *fepA* deletion strain in urine, either alone or mixed with wild-type cells, would address this question. Given that other mutants may be similarly "masked", it is important to know whether this phenomenon occurs.*

We thank the reviewer for this suggestion but believe that this would be very difficult to ascertain in *K. pneumoniae* as several redundant iron uptake systems exist. This would require significantly more time to construct sequential/combinatorial iron-uptake mutants to exactly determine this "cheating" and "masking" phenomenon and such work is beyond the scope of the current study.

(3) In cases where there are disparities between studies, e.g., for genes inferred to be essential for serum resistance, it would be informative to test individual deletions for genes described as essential in only one study.

We thank the reviewer for this suggestion, and we agree that deleting conditionally essential genes (i.e. serum resistance) could help identify discrepancies in methodology with other studies but this is beyond the scope of this study. Furthermore, we do not have these other strains readily available to us and importing these strains into Australia is challenging due to the strict import/quarantine laws.

Reviewer #1 (Recommendations For The Authors)

(4) Line 529. Why was 50 chosen as the read count threshold?

This was chosen as the minimum threshold needed to exclude essential genes from the comparative analysis, as these can contribute false positive results where a change from, for example, 2 to 5 reads between conditions is considered a >2-fold change. We have updated the manuscript text to highlight this: "were removed from downstream analysis to exclude confounding essential genes and minimize the effect of stochastic mutant loss" (line 539)

(5) The titles for Figure 5 and Figure 6 appear to be switched.

Thank you, we have now corrected this error.

(6) Line 381. "Forty-six of these regions contain potential open reading frames that could encode proteins". How is a potential ORF defined?

This was based on submitting the selected 145bp regions to BLASTx using default parameters and listing the top hit (if one was found). We have now edited the manuscript text to make this clearer. (Line 394)

(7) Two previous TnSeq studies looking at *Escherichia coli* and *Vibrio cholerae* suggest that H-NS can prevent transposon insertion, leading to false positive essentiality calls. Is there any evidence of this phenomenon here? A/T content could be used as a proxy for H-NS occupancy.

We thank the reviewer for this point and also agree that H-NS or other DNA-binding proteins could indeed lead to false-positive essentiality calls using TraDIS. Based on this, we have now included a sentence in the conclusion section mentioning this methodological caveat (Line 631). We believe that A/T content could potentially be used as a proxy for H-NS occupancy,

Reviewer #2 (Recommendations For The Authors):

(1) The authors may wish to reformat the manuscript by decanting a number of panels and figures as supplementary material. These include the panels related to the description of TraDIS (for example Fig 1D, 1E, 1F, 1G, Fig 2A, Fig 3C, 3D, 3E, 3F, Fig 5C, Fig 6D). This is a well-established method.

We thank the reviewer for this suggestion but believe that these panels allow the methodology and resulting insertion plots to be more followable and allow other researchers, of varying expertise, to better understand this functional genetic screen technique.

(2) The authors need to indicate how relevant the strain they have probed is. Is it a good reference strain of the KpI group?

This is a great suggestion and we have now included a new figure illustrating the genetic context and relatedness of *K. pneumoniae* ECL8 within the KpI phylogroup (New Figure 3).

(3) The authors need to provide an extensive comparison between the data obtained and those reported testing other *Klebsiella* strains. A Table identifying the common and different genes, as well as a figure, may suffice. I would encourage authors to compare also their data against *E. coli* and *Salmonella*. For example, *igaA* seems to be not essential in *Klebsiella* although data indicates it is in *Salmonella*.

We thank the reviewer for their comment and appreciate that our data could be extended and compared to other relevant Enterobacteriaceae members. However, we believe this is beyond the scope of this study as the focus is more on *K. pneumoniae*.

(4) None of the mutants tested further are complemented. Without these experiments, it cannot be rigorously claimed that these loci play any role in the phenotypes investigated.

We agree that complementation is an important tenet for validation of mutant gene phenotypes to specific gene loci, in this case *wbbY* has already been complemented and believe complementation for an already known molecular mechanism would be redundant. Please refer to our response in point 6.

We complemented isolated transposon mutants *hns7::Tn5* and *hns18::Tn5* with a mid-copy IPTG inducible . We observed a slight increase in serum susceptibility but not full rescue of

the WT phenotype (i.e. serum susceptibility). We suspect that the imperfect rescue of the serum-resistance phenotype observed could be due to the expression levels and copy number of the complement hns plasmid used. As hns is a known global regulator its possible pleiotropic role is complex as many aspects of stress response, metabolism or capsule could be affected in Klebsiella (doi.org/10.1186/1471-2180-6-72, doi.org/10.3389/fcimb.2016.00013). We have now included in the text our efforts in complementation and have included a new supplementary figure (Figure S11).

(5) The contribution of siderophores to survival in urine is not conclusively established. Authors may wish to test the transcription of relevant genes, and to assess whether the expression is fur dependent in urine. Also, authors may wish to identify the main siderophore needed for survival in urine by probing a number of mutants; this will allow us to assess whether there is a degree of selection and redundancy.

We thank the reviewer for their comment and agree siderophore uptake is important. We have now included an additional panel (Figure 5G) interrogating the importance of iron-uptake genes grown in urine which is iron limited. We do appreciate that further experiments looking into the Fur regulon and siderophore biosynthesis would be interesting but believe this is outside the scope of this study.

(6) The role of wbbY is intriguing, pointing towards the importance of high molecular weight O-polysaccharide. In this mutant background, the authors need to assess whether the expression of the capsule, and ECA is affected. Authors need also to complement the mutant. Which is the mechanism conferring resistance?

We thank the reviewer for their comment and would like to mention that wbbY has already been shown to play a role in LPS profile/biosynthesis and serum-resistance (10.3389/fmicb.2014.00608). Furthermore, blast analysis shows that the wbbY gene between the NTUH-K2044 (strain used in aforementioned study) and ECL8 shares 100% sequence identity and also shares lps operon structure. Hence, we do not find it pertinent to complement this mutant as we believe its molecular mechanism has already been established. We have now in the text more prominently highlighted the results of this study and how our screen was robust enough to also identify this gene for serum resistance.

(7) hns and gnd mutants most likely will have their capsule affected. The authors need to assess whether this is the case. Which is the mechanism conferring resistance?

As mentioned in point 6, we believe that the serum resistance phenotype is attributable to the LPS phenotype. Previous studies have listed hns and gnd mutants would likely have differences in capsule but due to hns being pleiotropic and gnd being intercalated/adjacent to the LPS/O-antigen biosynthesis it would be difficult to exactly delineate which cellular surface structure is involved.

(8) The conclusion section can be shortened significantly as much of the text is a repetition of the results/discussion section.

We thank the reviewer for their suggestion and have made edits to limit repetition in the conclusion section.

Reviewer #3 (Public Review):

Below I include several comments regarding potential weaknesses in the methodology used:

- *The study was done with biological duplicates. In vitro studies usually require 3 samples for performing statistical robust analysis. Thus, are two duplicates enough to reach reproducible results? This is important because many genes are analyzed which could lead to false positives. That said, I acknowledge that genes that were confirmed through targeted mutagenesis led to similar phenotypic results. However, what about all those genes with higher p and q values that were not confirmed? Will those differences be real or represent false positives? Could this explain the differences obtained between this and other studies?*

We thank the reviewer for their comment and apologize for the confusion, data were only pooled for the statistical analysis of gene essentiality. Here, two technical replicates of the input library were sequenced and the number of insertions per gene quantified (insertion index scores). These replicates had a correlation coefficient of $r^2 = 0.955$, and the insertions per gene data were pooled to give total insertions index scores to predict gene essentiality. For conditional analyses (growth in urine or serum), replicate data were not combined. As mentioned previously, differences between this and other studies could also be attributed to inherent genomic differences or due to differences in experimental methodology, computational approaches, or the stringency of analysis used to categorize these genes.

- *Two approaches are performed to investigate genes required for *K. pneumoniae* resistance to serum. In the first approach, the resistance to complement in serum is investigated. And here a total of 356 genes were identified to be relevant. In contrast, when genes required for overall resistance to serum are studied, only 52 genes seem to be involved. In principle, one would expect to see more genes required for overall resistance to serum and within them identify the genes required for resistance to complement. So this result is unexpected. In addition, it seems unlikely that 356 genes are involved in resistance to complement. Thus, is it possible false positives account for some of the results obtained?*

We thank the reviewer for their comment and do believe false positives may account for some of the identified genes. Specifically, to the large contrast in genes, we believe this is due to the methodology as alluded to in our conclusion section. For overall resistance to serum, we used a longer time point (180 min exposure) where fewer surviving mutants are recovered hence fewer overall genes will be identified, whereas strains with short killing windows will have more (i.e. complement-mediated killing, 90 minute exposure).

Reviewer #3 (Recommendations For The Authors):

- *In Figure 4 it is shown that genes important for growth in urine include several that are required for enterobactin uptake. Moreover, an in vitro experiment shows that the complementation of urine with iron increases *K. pneumoniae* growth. It would have been informative to do a competition experiment between the WT and *Fep* mutants in urine supplemented with iron. This could demonstrate that the genes identified are only necessary for conditions in which iron is in limiting concentrations and confirm that the defect of the mutants is not due to other characteristics of urine.*

We appreciate this suggestion. We have now included a new panel (Figure 5G) addressing the supplementation of iron in urine for these select mutants.

- *Considering the results section, the title for Figure 6 seems to be more appropriate for Figure 5.*

Thank you, this has now been corrected.

Other points:

- *Line 44: treat instead of treating*

Thank you, this has now been corrected.

- *Line 63: found that only 3 genes played a role instead of "found only 3 genes played a role"*

Thank you, this has now been corrected.

- *Line 105: is there any reason for only using males? Since UTIs are frequent in women? Why not use urine from women volunteers?*

Due to accessibility of willing volunteers and human ethic application processes, only male samples were available. We are currently undertaking further studies to understand how male and female urine influences growth of uropathogens.

- *Line 105: since the urine was filter-sterilized, maybe the authors can comment that another point that is missing in urine - and that it may be important to study - will be the presence of the urine microbiome and how this affects growth of *K. pneumoniae*.*

We again thank the reviewer for this comment and have now edited the manuscript discussing how the absence of urine microbiome could affect growth (Line 659). As an aside, future studies in our lab are interested in looking at the role of commensal/microbiome co-interactions for essentiality/pathogenesis using TraDIS.

- *Line 116: I understand that the 8 healthy volunteers combined males and females*

Thank you, we have now edited this methods line to make this clearer.

- *Line 120: incubate in serum 90 min and 180 RPM shaking: any reasons for using these conditions, any reference supporting these conditions?*

Thank you for pointing this out, we were mirroring a previous *K. pneumoniae* serum-resistance study (doi.org/10.1128/iai.00043-).

- *Line 156: space after the dot.*

Thank you, we have now corrected this in the manuscript.

- *Line 164: resulting reads were mapped to the *K. pneumoniae*: what are the parameters used for mapping (e.g. % of identity...)?*

Thank you for bringing this to our attention, we have now included in our manuscript that we used the default parameters of BWA-MEM for mapping for minimum seed length (default -k =20bp exact match)

- *Line 180: it will be good to upload to a repository the In-house scripts used or indicate the link beside the reference for those scripts.*

Our scripts are derived from the pioneering TraDIS study (doi: 10.1101/gr.097097.109). We are currently still optimizing our scripts and intend to upload these to be publicly available. However, in the meantime we are more than happy to share them with other parties upon request.

- *Line 191: why were genes classified as 12 times more likely to be situated in the left mode? Any particular reason for using this threshold?*

We opted for a more-stringent threshold for classifying essential genes, in keeping with previous and comparable studies (doi.org/10.1371/journal.pgen.1003834).

- *Line 209: do you mean Q-value of <0.05 instead of >0.05 ? How is this Q value is calculated, and which specific tests are applied?*

Thank you for pointing out this Q value error, we have now corrected this in the manuscript. These values were generated using the biotradis tradis_comparison.R script which uses the EdgeR package. For further reading please see DOI: 10.1093/bioinformatics/btp616. The Q-values are from P values corrected for multiple testing by the Benjamini-Hochberg method.

- *Line 212: again, which type of test is used? What about the urine growth analysis? The same type of tests were applied?*

Thank you for bringing this to our attention, we have now indicated in the referenced method section the use of which package for which datasets (i.e. or serum). Line 212 refers to our use of the AlbaTraDIS package, which builds on the biotradis toolkit, to identify gene commonalities/differences in the selected growth conditions again using multiple testing by the Benjamini-Hochberg methods. For further reading, please refer to DOI: 10.1371/journal.pcbi.1007980

- *Line 226: do the authors mean Sanger sequencing instead of SangerSanger sequencing?*

Thank you, we have now corrected this in the manuscript.

- *Line 239: does the WT strain contain another marker for differentiating this strain from the mutant? Or is the calculation of the number of WT CFUs done by subtracting the number of CFUs in media with antibiotics from the total number of CFUs in media without antibiotics? The former will be a more accurate method.*

The calculation was based on the latter assumption, “number of WT CFUs done by subtracting the number of CFUs in media with antibiotics from the total number of CFUs in media without antibiotics”. We have now updated the methods section to make this clearer.

- *Line 266: can you indicate approximately how many CFUs you have in this OD?*

Thank you, we have now also indicated an approximate CFU for this mentioned OD600 (OD600 1 = 7×10^8 cells).

- *Line 309: besides indicating Figure 1D please indicate here Dataset S1 (the table where one can see the list of essential and non-essential genes). This table is shown afterwards but I think it will be more appropriate to show it at the beginning of the section.*

Thank you, we have now taken on this recommendation and have now edited the manuscript to also indicate Dataset S1 earlier.

- *Table 3. regarding the comparison of essential genes between different strains. I think it will be more clear if a Venn diagram was drawn including only genes that have homologs in all the studied strains (i.e. defining the core genome essentially).*

We would like to thank the reviewer for suggesting a venn diagram and have now removed Table 3 which has been replaced with a new Figure 3.

- *Line 461: replicates were combined for downstream analyses? But are replicates combined for doing the statistical analysis? If so, how is the statistical analysis performed? How is it taken into account the potential variability in the abundance in each library? An r of 0.9 is high but not perfect.*

Technical replicates of the sequenced input library were combined following identification of a correlation coefficient of $r^2 = 0.955$, for the calculation of insertion index scores used in gene essentiality analysis. While $r^2 = 0.955$ is not perfect, discrepancies here can be attributed to higher variance in insertion index scores when sampling small genes, as these are represented by fewer insertions and the stochastic absence of a single insertion event has a greater effect on the overall IIS. Replicate data were not pooled for statistical analysis of mutant fitness (growth in urine and serum).

- *Line 487: is there any control strain containing the kanamycin gene in a part of the genome that does not affect the growth of *K. pneumoniae*? This could be used to show that having the kanamycin gene does not provide any defect in urine growth.*

We thank the reviewer for this suggestion but argue that introduction of the kanamycin gene into each unique loci may result in various levels of gene fitness that would be incomparable to a single control strain. Instead, we culture the ECL8 mutant library in urine and ensure that its kinetics are comparable to the wildtype. As the library contains thousands of kanamycin cassettes uniquely positioned across most of the genome with no observable growth defect, we do not anticipate the presence or expression of the cassette to have an appreciable impact.

- *Line 569: in the methodology it was indicated that control cells were incubated in PBS for the same amount of time. I think this is an important control that is not cited in the results section. Please can you indicate?*

We apologise for this misunderstanding due to how the methodology was written. The experiment did not sequence the PBS incubated samples as this was solely used a check for viability of the used *K. pneumoniae* ECL8 stock solution.

- *Line 597: "Mutants in igaA are enriched in our experiments". Can you show this data?*

We have now included this as a supplementary (Figure S11A)

- *Line 615: when doing this calculation, I guess the authors take into account only genes that are also present in the other strains.*

That is correct, we were aiming to highlight the high conservation of “essential genes” among all the selected strains.

- *Line 627: why surprisingly? Because is too low. Then indicate.*

Thank you, we have now edited this sentence to indicate that.

- *Figure 4: please, for clarity, can you indicate the meaning of the colors in the figure itself besides indicating it in the figure legend?*

Thank you, we have now included a color legend in these figure panels for clarity.