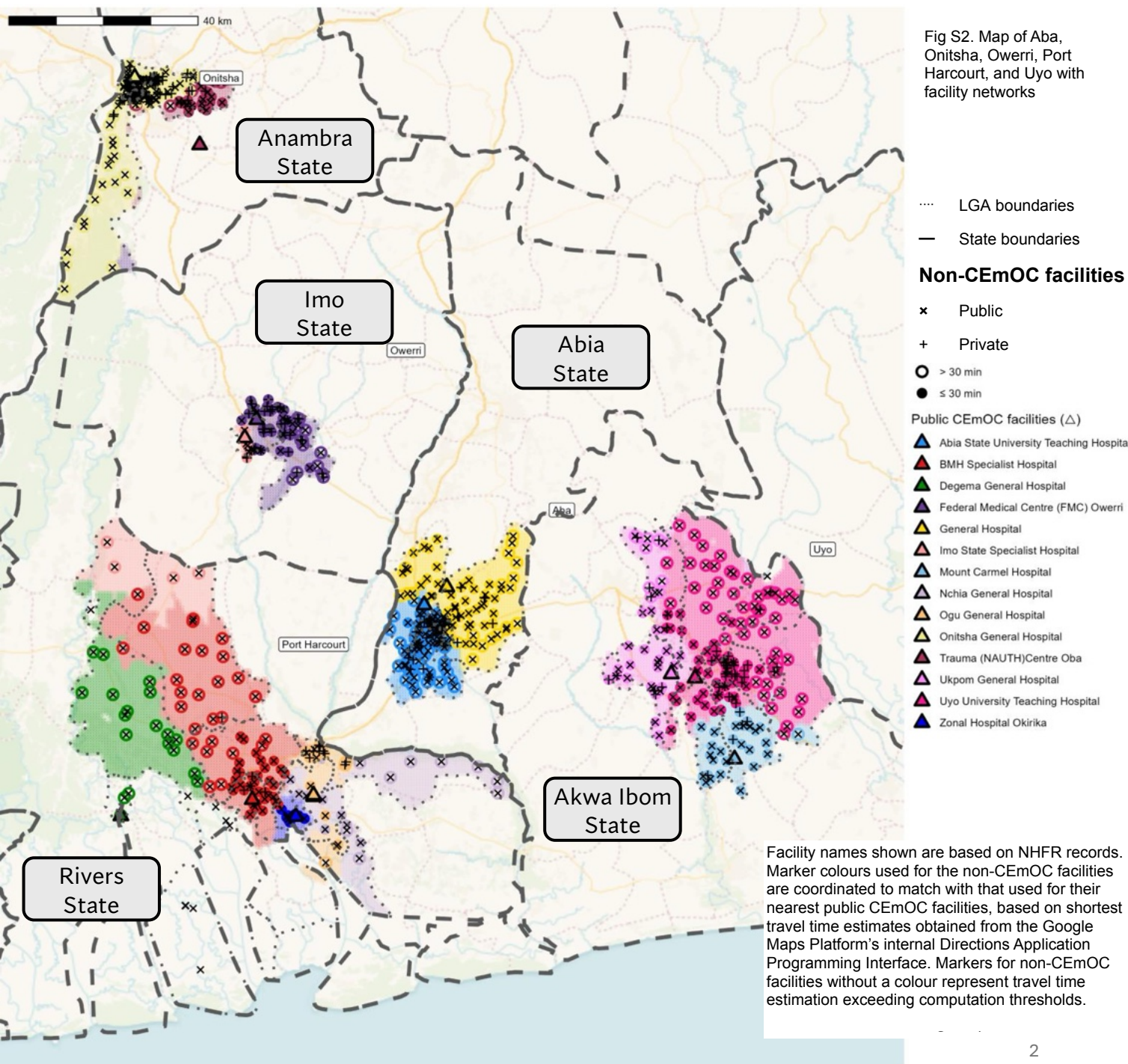


Fig S1. Map of Benin City and Warri with facility networks

Facility names shown are based on NHFR records. Marker colours used for the non-CEmOC facilities are coordinated to match with that used for their nearest public CEmOC facilities, based on shortest travel time estimates obtained from the Google Maps Platform's internal Directions Application Programming Interface. Markers for non-CEmOC facilities without a colour represent travel time estimation exceeding computation thresholds.



Facility names shown are based on NHFR records. Marker colours used for the non-CEmOC facilities are coordinated to match with that used for their nearest public CEmOC facilities, based on shortest travel time estimates obtained from the Google Maps Platform's internal Directions Application Programming Interface. Markers for non-CEmOC facilities without a colour represent travel time estimation exceeding computation thresholds.

Fig S3. Map of Lagos with facility networks

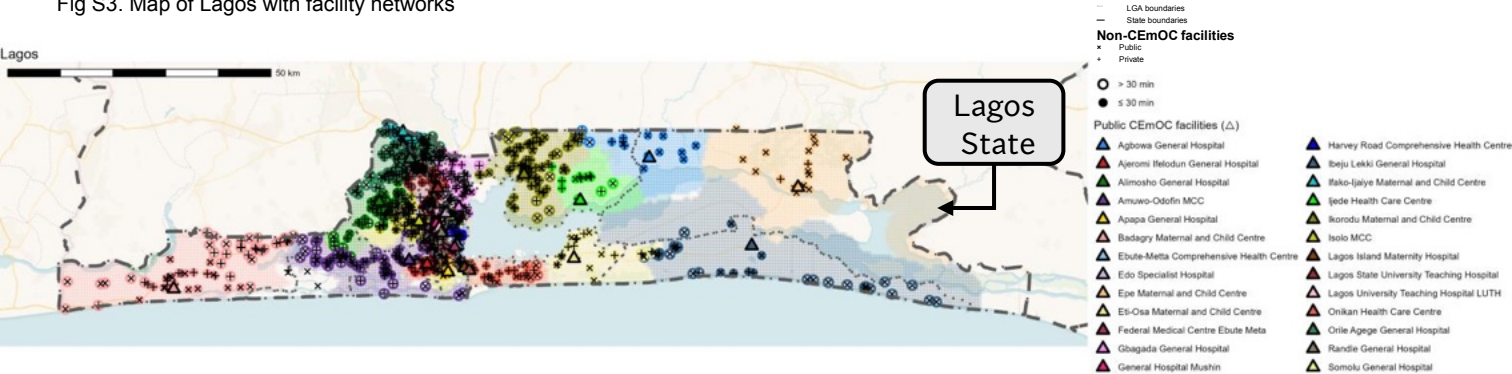
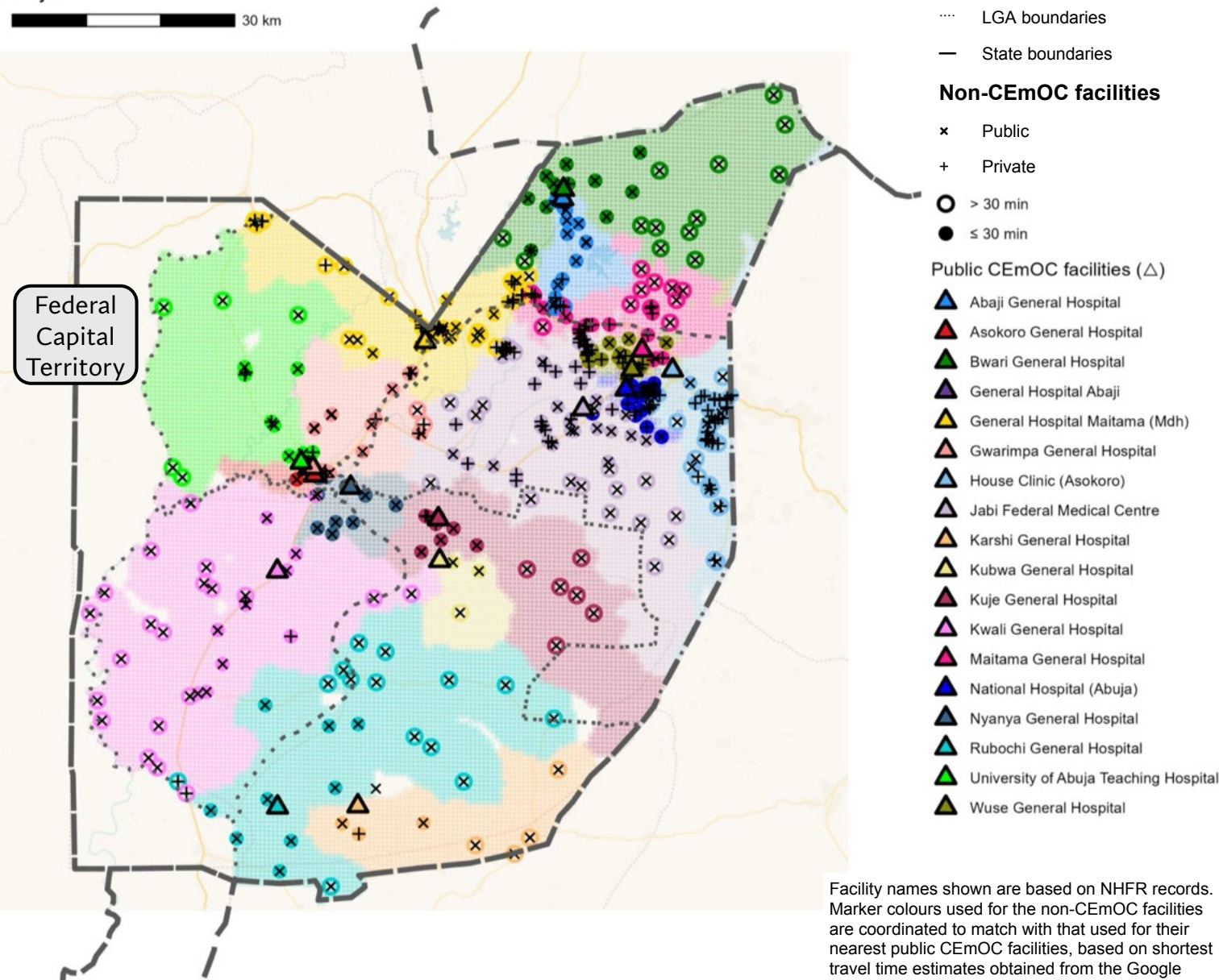


Fig S4. Map of Abuja with facility networks



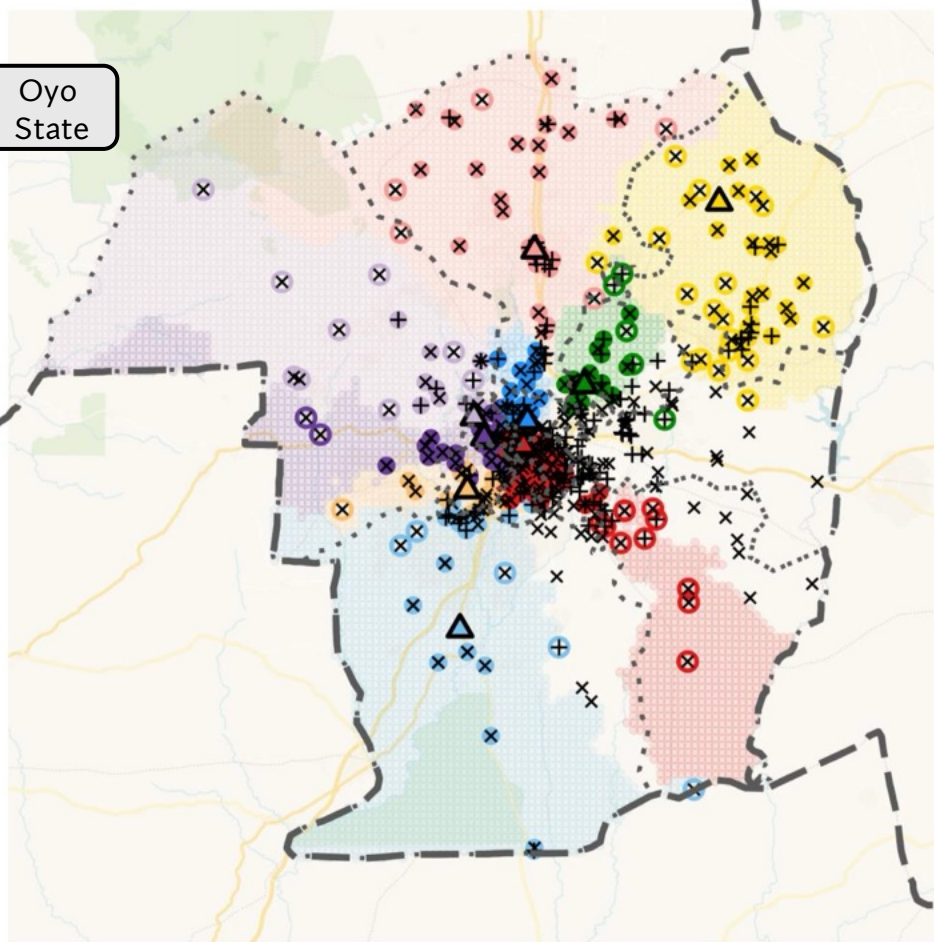
Facility names shown are based on NHFR records. Marker colours used for the non-CEmOC facilities are coordinated to match with that used for their nearest public CEmOC facilities, based on shortest travel time estimates obtained from the Google Maps Platform's internal Directions Application Programming Interface. Markers for non-CEmOC facilities without a colour represent travel time estimation exceeding computation thresholds.

Fig S5. Map of Ibadan with facility networks

Ibadan

20 km

Oyo State



..... LGA boundaries

— State boundaries

Non-CEmOC facilities

x Public

+ Private

○ > 30 min

● ≤ 30 min

Public CEmOC facilities (△)

▲ 2nd Mechanized Division Medical Hospital

▲ Adeoyo Teaching Hospital

▲ Akobo Naval Airforce Medical Centre

▲ Jericho Specialist Hospital

▲ Kutayi General Hospital

▲ Moniya General Hospital

▲ Orile Odo General Hospital

▲ Police Hospital

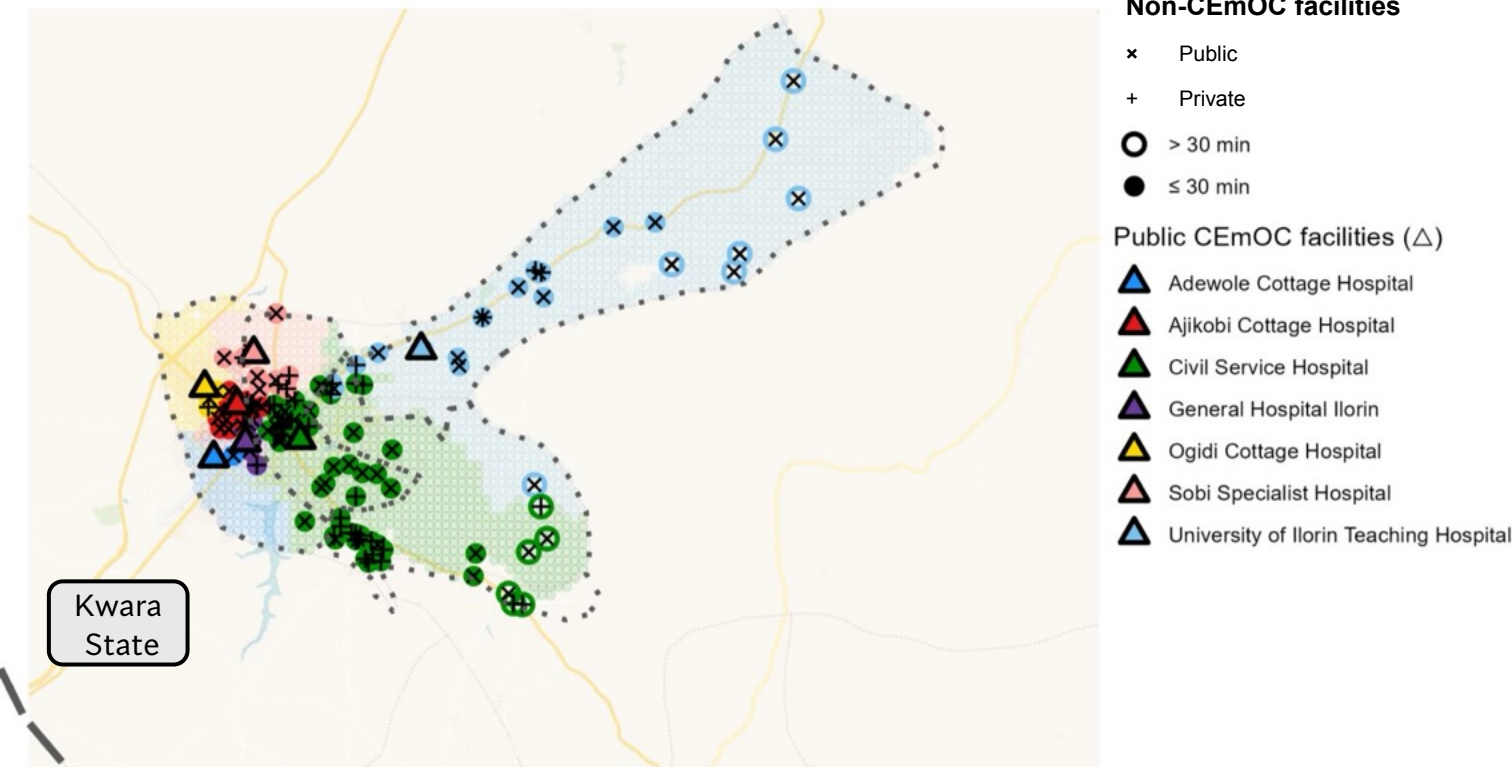
▲ Ring Road State Hospital

▲ University College Hospital

Facility names shown are based on NHFR records. Marker colours used for the non-CEmOC facilities are coordinated to match with that used for their nearest public CEmOC facilities, based on shortest travel time estimates obtained from the Google Maps Platform's internal Directions Application Programming Interface. Markers for non-CEmOC facilities without a colour represent travel time estimation exceeding computation thresholds.

Fig S6. Map of Ilorin with facility networks

10 km



We note that the Maternity Wing of University of Ilorin Teaching Hospital is located in a different local government area from the main hospital.

Facility names shown are based on NHFR records. Marker colours used for the non-CEmOC facilities are coordinated to match with that used for their nearest public CEmOC facilities, based on shortest travel time estimates obtained from the Google Maps Platform's internal Directions Application Programming Interface. Markers for non-CEmOC facilities without a colour represent travel time estimation exceeding computation thresholds.

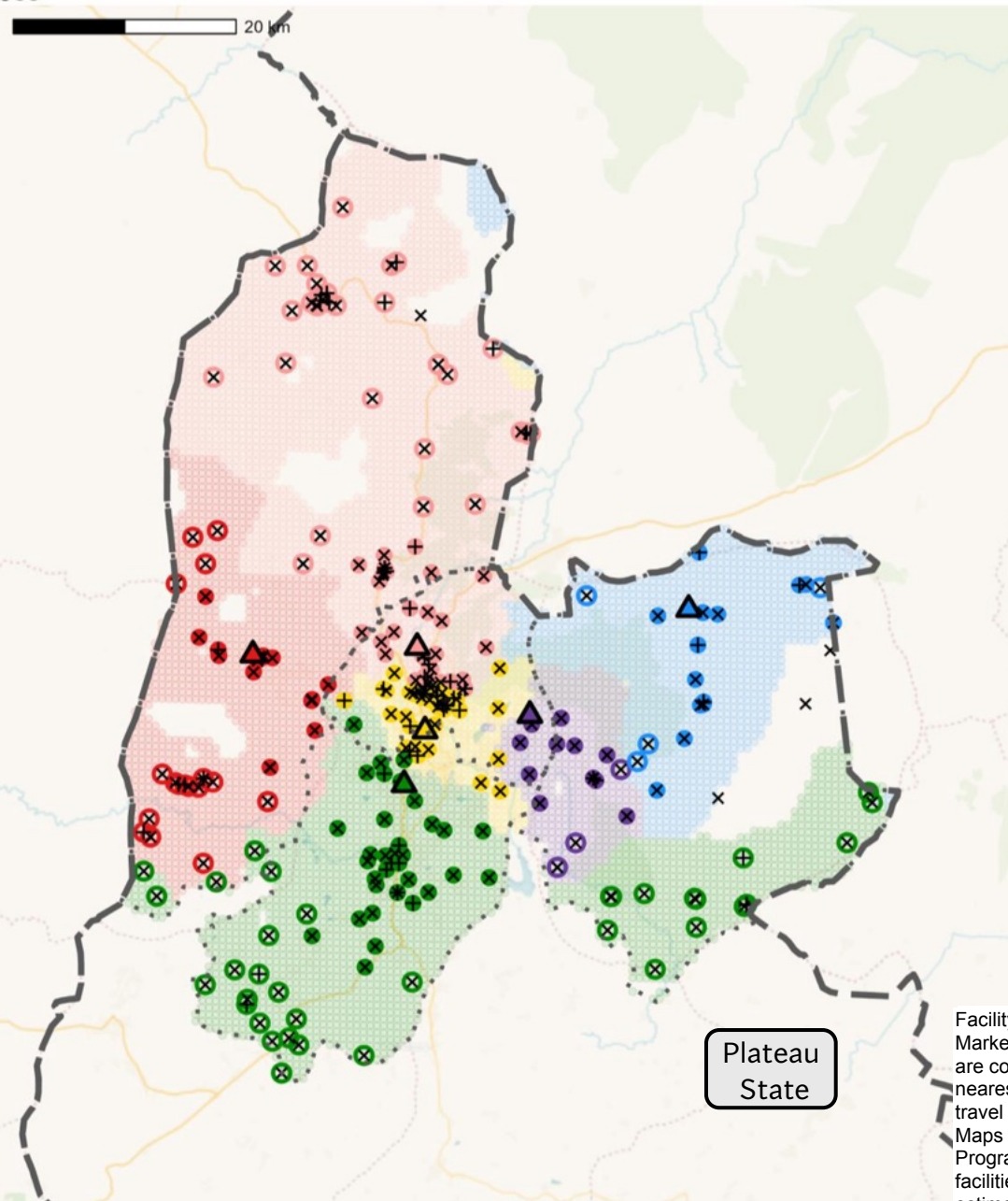


Fig S7. Map of Jos with facility networks

.... LGA boundaries

— State boundaries

Non-CEmOC facilities

x Public

+ Private

○ > 30 min

● ≤ 30 min

Public CEmOC facilities (Δ)

▲ Angware General Hospital

▲ Bassa Cottage Hospital

▲ Dadin Kowa Comprehensive Health Centre

▲ Jos University Teaching Hospital

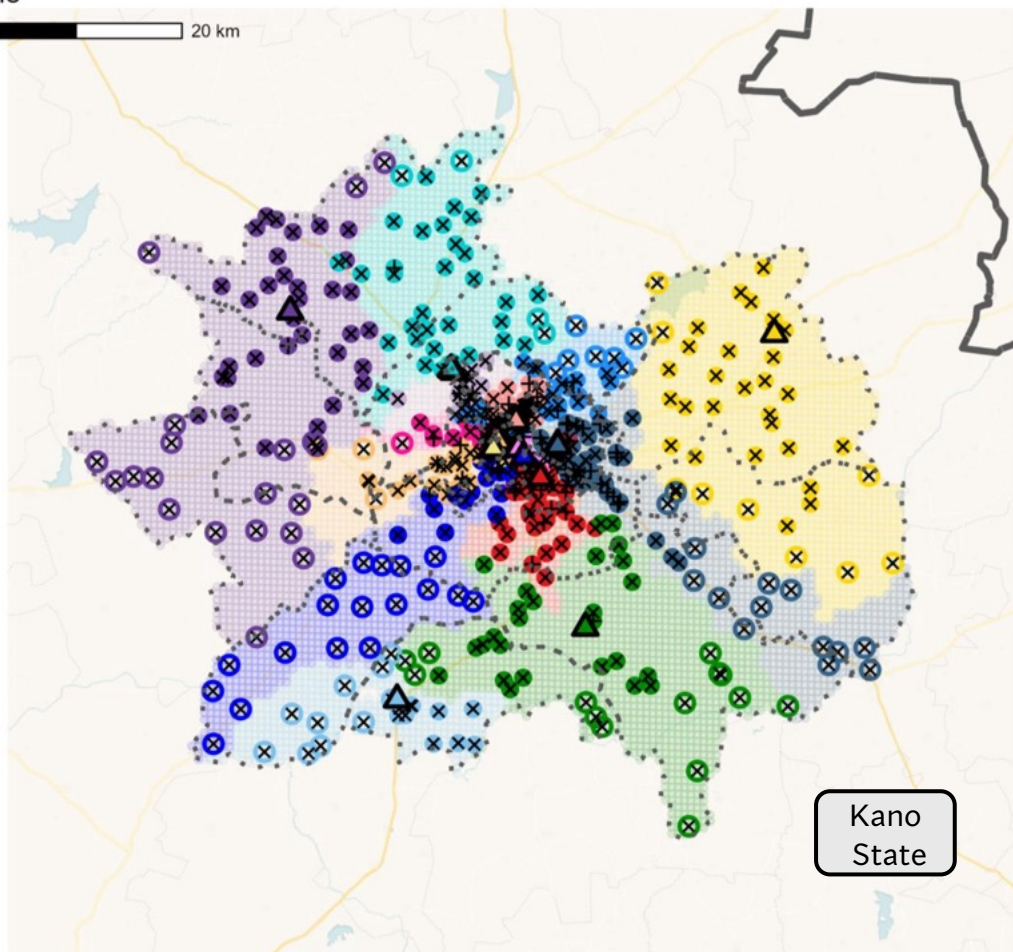
▲ Plateau State Specialist Hospital

▲ University Health Service, Unijos

Facility names shown are based on NHFR records. Marker colours used for the non-CEmOC facilities are coordinated to match with that used for their nearest public CEmOC facilities, based on shortest travel time estimates obtained from the Google Maps Platform's internal Directions Application Programming Interface. Markers for non-CEmOC facilities without a colour represent travel time estimation exceeding computation thresholds.

Fig S8. Map of Kano with facility networks

Kano



.... LGA boundaries

— State boundaries

Non-CEmOC facilities

× Public

+ Private

○ > 30 min

● ≤ 30 min

Public CEmOC facilities (Δ)

▲ Abubakar Imam Urology Centre

▲ Aminu Kano Teaching Hospital

▲ Dawakin Kudu General Hospital

▲ Dawakin Tofa General Hospital

▲ Gezawa General Hospital

▲ Kano Infectious Diseases Hospital

▲ Kura General Hospital

▲ Mariya Sanusi General Hospital

▲ Marmara General Hospital

▲ Mohammed Abdullahi Wase General Hospital

▲ National Orthopaedic Hospital

▲ Nuhu Bamalli General Hospital

▲ Sabo Bakin Zuwo General Hospital

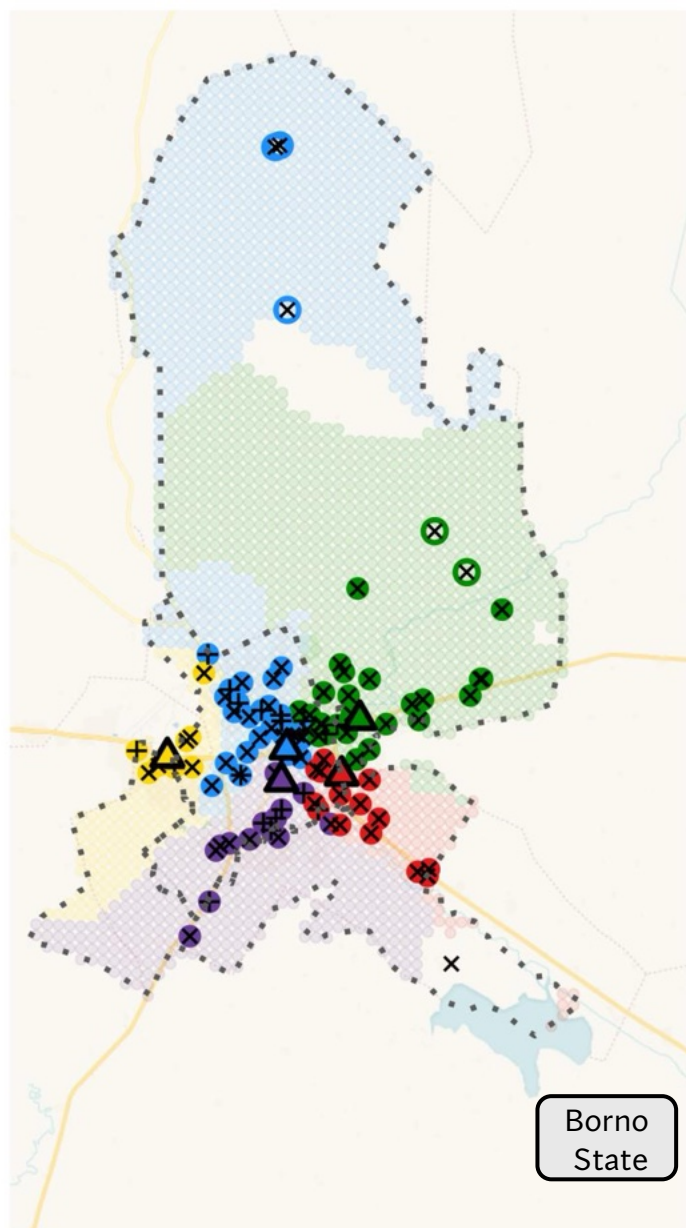
▲ Sheikh Isyaku Rabi'u Paediatric Hospital

▲ Sir Mohammed Sanusi General Hospital

▲ Waziri Shehu Gidado General Hospital

Facility names shown are based on NHFR records. Marker colours used for the non-CEmOC facilities are coordinated to match with that used for their nearest public CEmOC facilities, based on shortest travel time estimates obtained from the Google Maps Platform's internal Directions Application Programming Interface. Markers for non-CEmOC facilities without a colour represent travel time estimation exceeding computation thresholds.

Fig S9. Map of Maiduguri with facility networks



.... LGA boundaries

— State boundaries

Non-CEmOC facilities

× Public

+ Private

○ > 30 min

● ≤ 30 min

Public CEmOC facilities (△)

△ Maiduguri State Specialist Hospital

△ Maiduguri University Teaching Hospital

△ Maryam Abatcha Women and Children Hospital

△ Mohammed Shuwa Memorial Hospital

△ Umar Shehu Ultra Modern Hospital

Facility names shown are based on NHFR records. Marker colours used for the non-CEmOC facilities are coordinated to match with that used for their nearest public CEmOC facilities, based on shortest travel time estimates obtained from the Google Maps Platform's internal Directions Application Programming Interface. Markers for non-CEmOC facilities without a colour represent travel time estimation exceeding computation thresholds.

Facilities with other names or spelt differently:

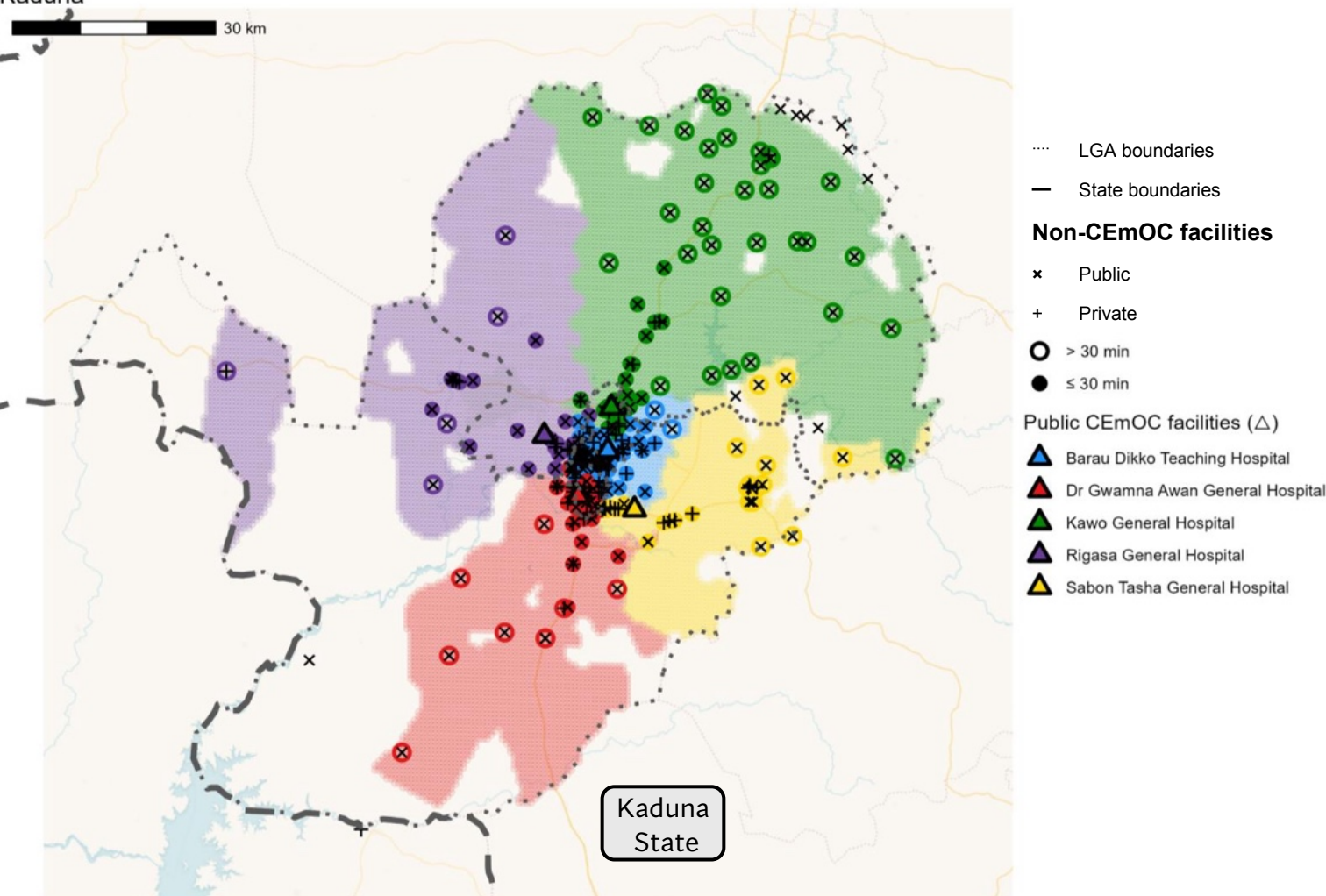
Maiduguri University Teaching Hospital (University of Maiduguri Teaching Hospital)

Maiduguri State Specialist Hospital (State Specialist Hospital Maiduguri)

Mohammed Shuwa Memorial Hospital (Muhammad Shuwa Memorial Hospital)

Barau Dikko Paediatric Hospital Kaduna (Barau Dikko Teaching Hospital)

Fig S10. Map of Kaduna with facility networks



Facility names shown are based on NHFR records. Marker colours used for the non-CEmOC facilities are coordinated to match with that used for their nearest public CEmOC facilities, based on shortest travel time estimates obtained from the Google Maps Platform's internal Directions Application Programming Interface. Markers for non-CEmOC facilities without a colour represent travel time estimation exceeding computation thresholds.

Facilities with other names or spelt differently:

Barau Dikko Paediatric Hospital Kaduna (Barau Dikko Teaching Hospital)

Bassa Cottage Hospital (Wase Cottage Hospital)