

Figure 1. Approximate relative abundance of individual amino acids in collagen and keratin. Created with data from reference (32).

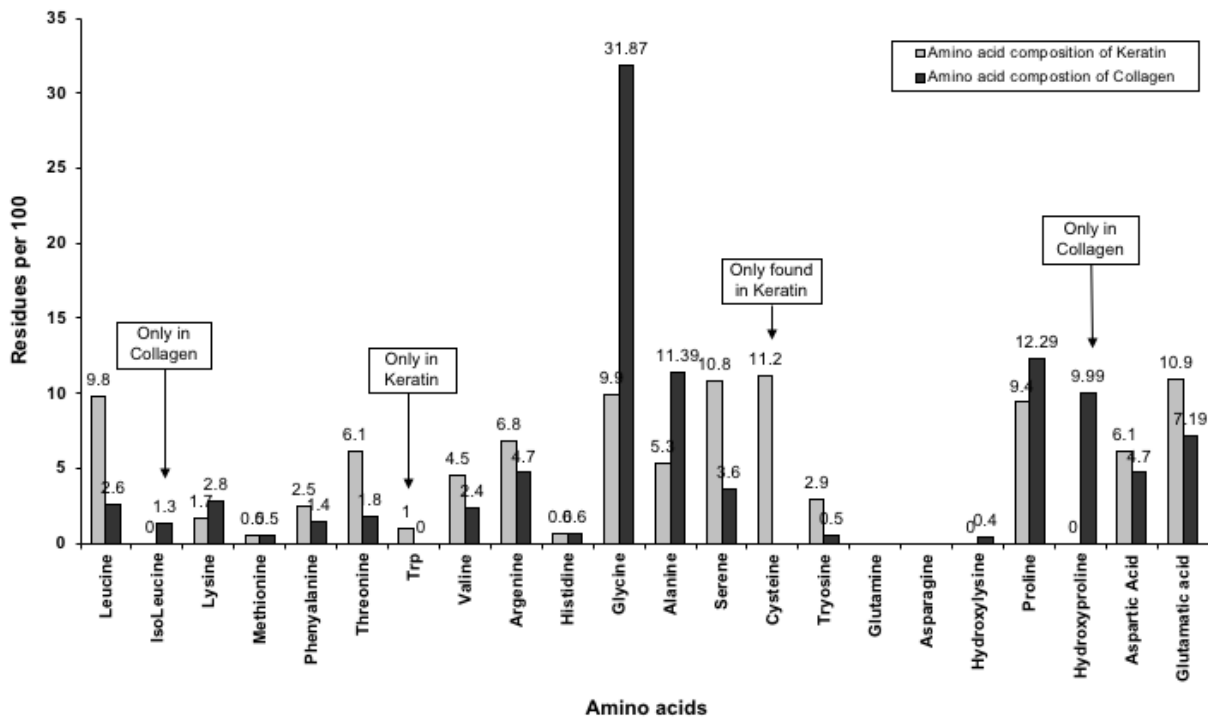


Figure 2. Chromatogram from preparative RP-HPLC separation of modern bovine collagen. Reproduced with permission from reference (15).

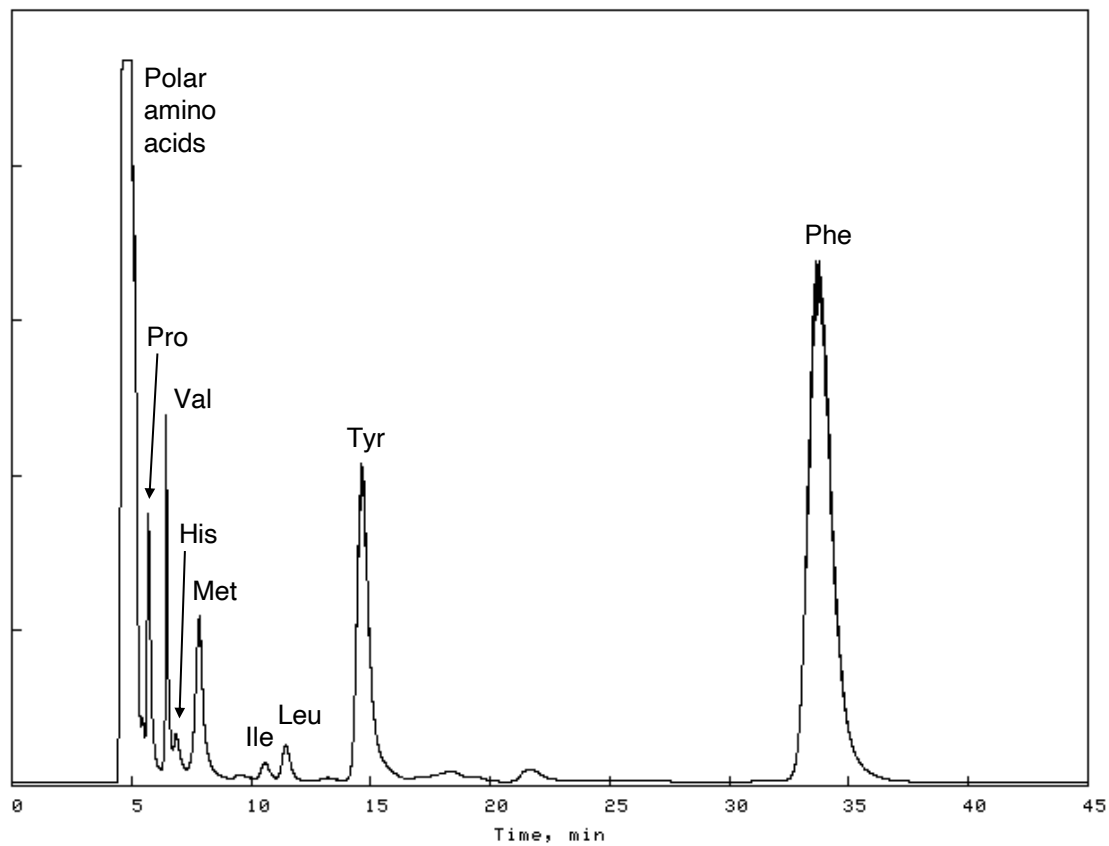


Figure 3. Chromatogram from preparative IP-HPLC separation of modern bovine collagen. Reproduced with permission from reference (15).

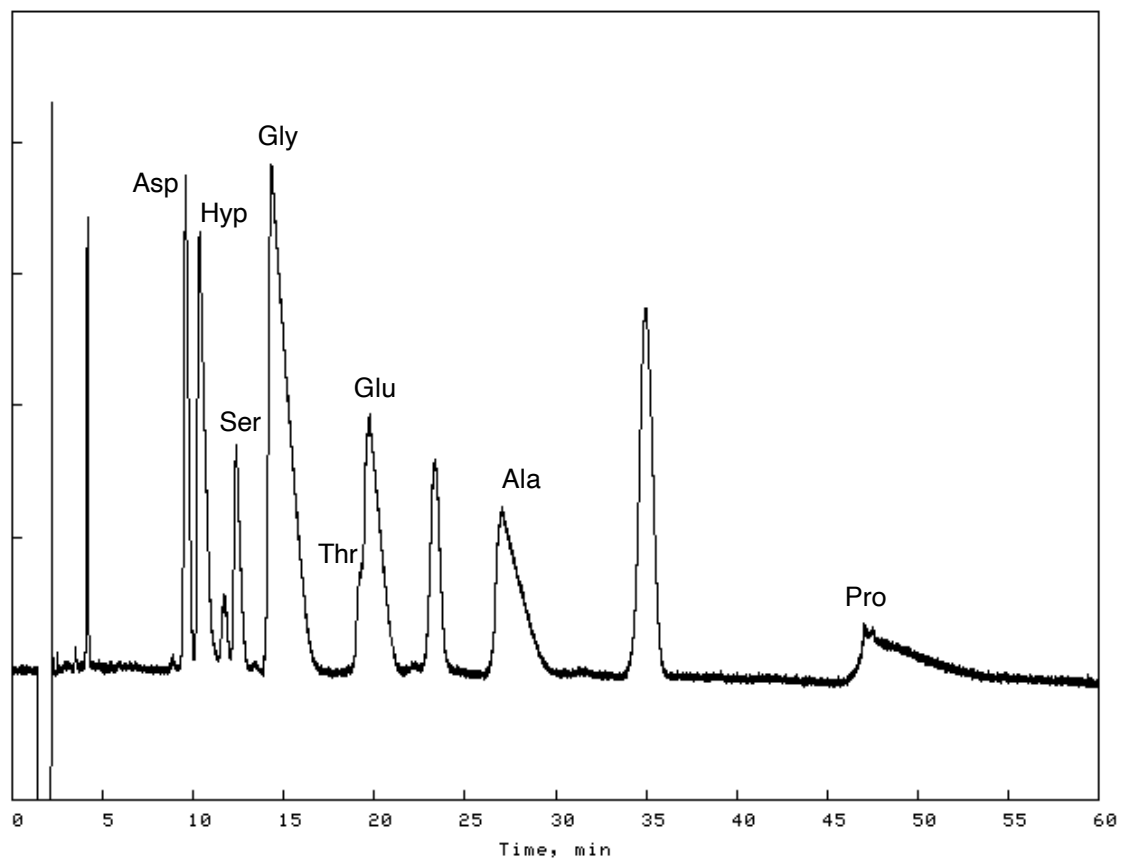


Figure 4. Chromatogram from preparative mixed-mode chromatography. Arginine elutes at around 240-290 min. Reproduced with permission from reference (21).

