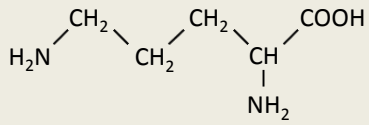
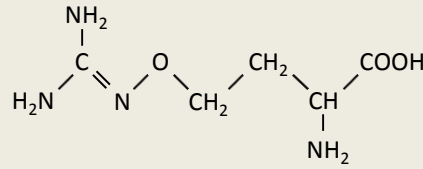


ARG	Arginase	dcSAM	Decarboxylated SAM	MAT	Methionine adenosyltransferase	ODC	Ornithine decarboxylase
ASL	Argininosuccinate lyase	Glnase	Glutaminase	MS	Methionine synthase	OTA	Ornithine transaminase
ASNS	Asparagine synthetase	GNMT	Glycine N-methyltransferase	MTA	Methylthioadenosine	OTC	Ornithine transcarbamylase
ASS	Argininosuccinate synthase	GS	Glutamine synthetase	MTAP	Methylthioadenosine phosphorylase	SAH	S-adenosyl homocysteine
CarbP	Carbamoyl phosphate	Hcy	Homocysteine	MTR-1-P	Methylthioribose-1-phosphat	SAM	S-adenosyl methionine

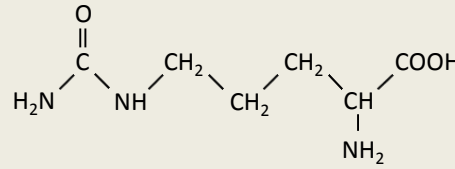
Analytes



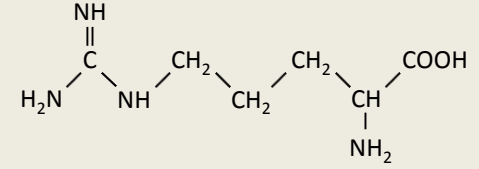
Ornithine



Canavanine

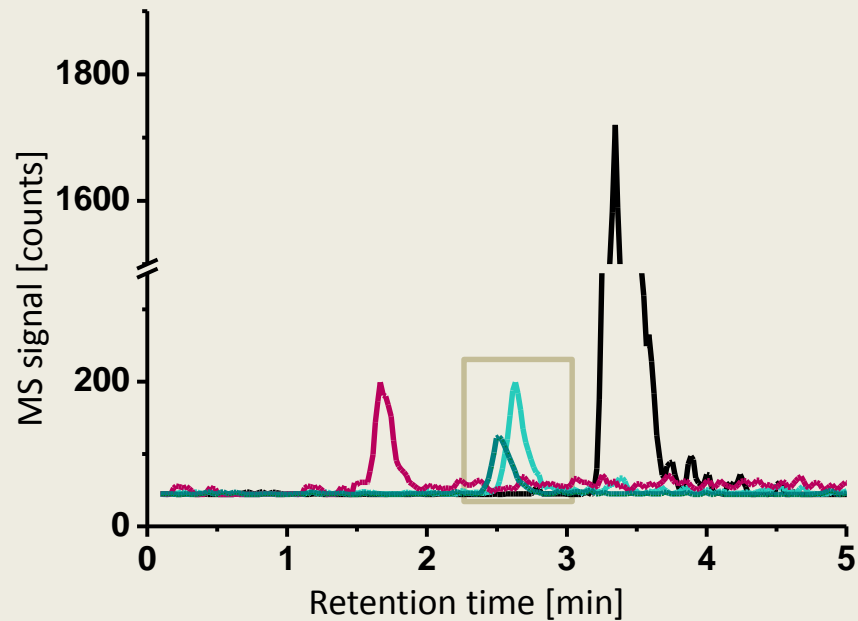


Citrulline



Arginine

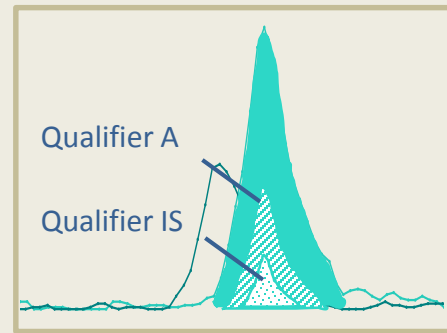
Peak Identification



Peak Integration

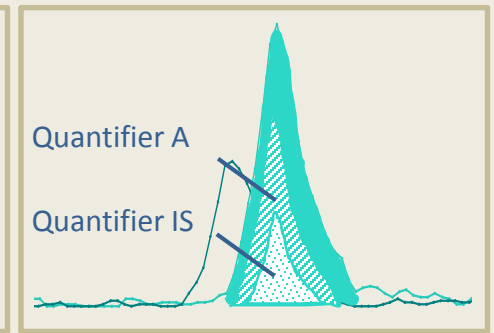
Citrulline

Peak verification: qualifier ions



A - analyte

Peak integration: quantifier ions



IS- internal standard

Calculation

$$\text{concentration}_{\text{Cit}} = \frac{\text{concentration}_{\text{IS}} \cdot \text{peak area}_{\text{Cit}}}{\text{peak area}_{\text{IS}}}$$