

Figure 1. Overview of hypotheses explaining pathogenic role of HLA-B27 in spondyloarthritis

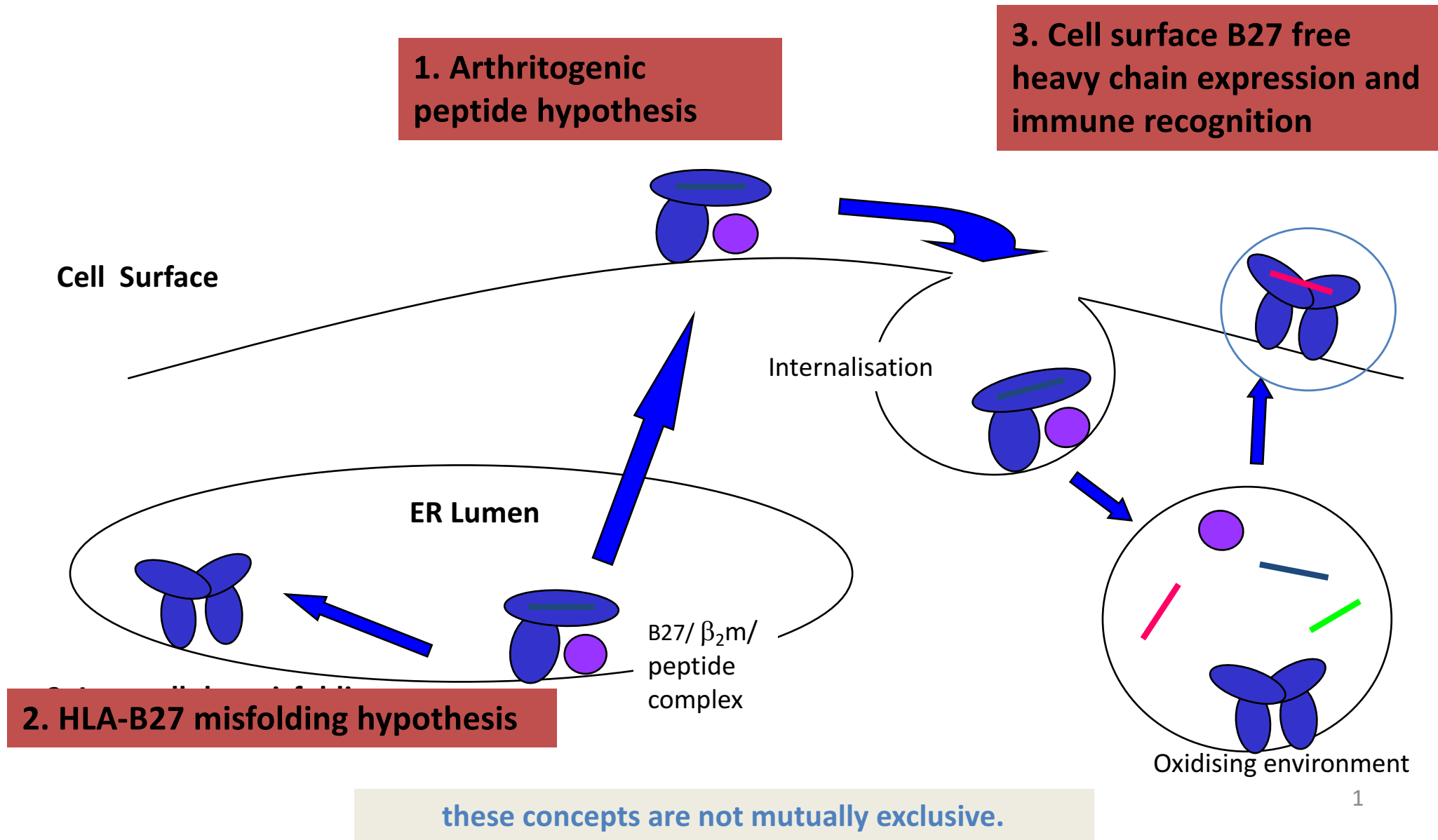


Figure 2. Molecular structure of HLA-B27.

PDB at <http://www.rcsb.org/pdb/explore.do?structureId=1hsa> and Madden et al (7)

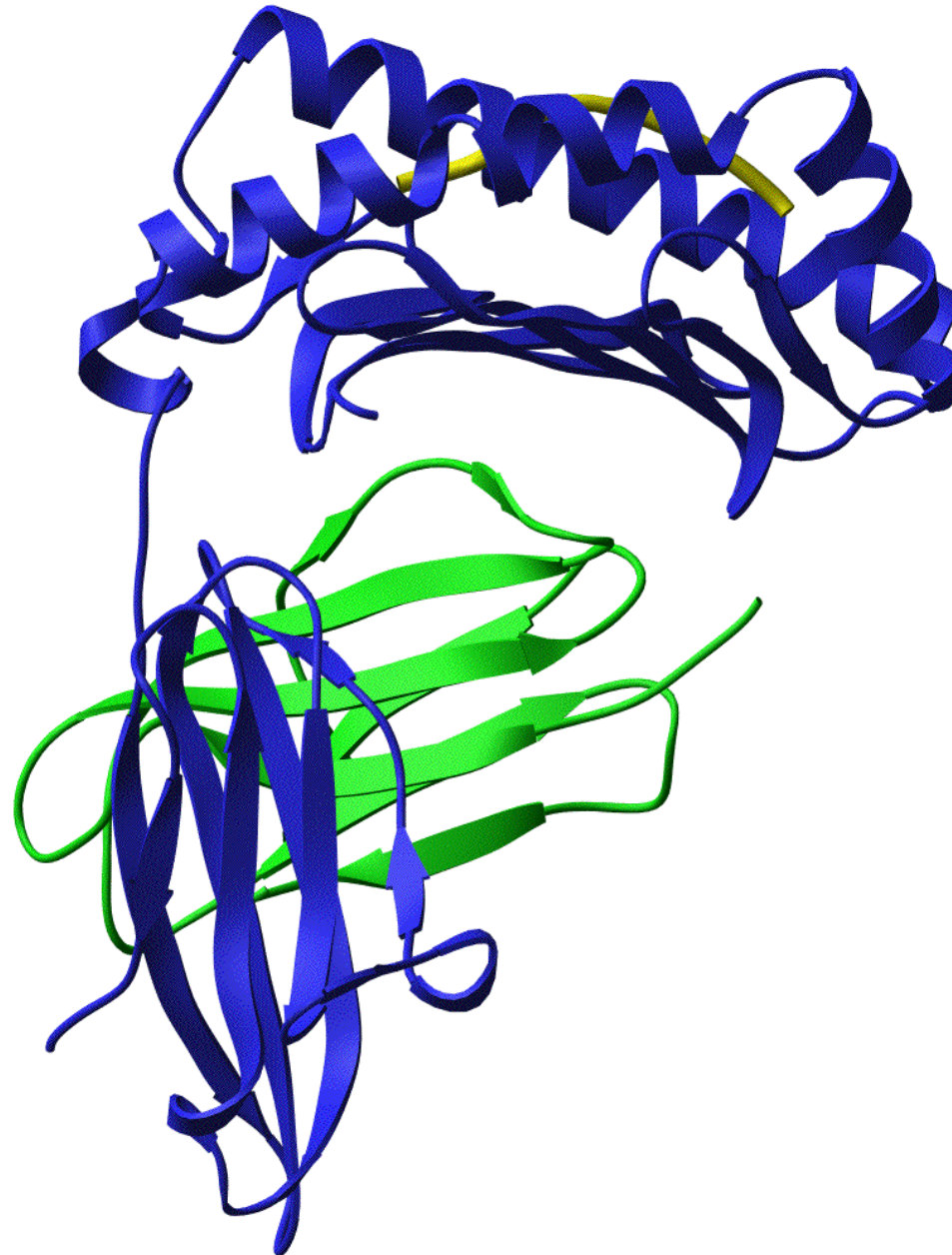


Figure 3. Model for cell surface HLA-B27 free heavy chain induction and pro-inflammatory effects

