







VI

A



B



















xv











XX





XXII

A



B







021/192

XXV

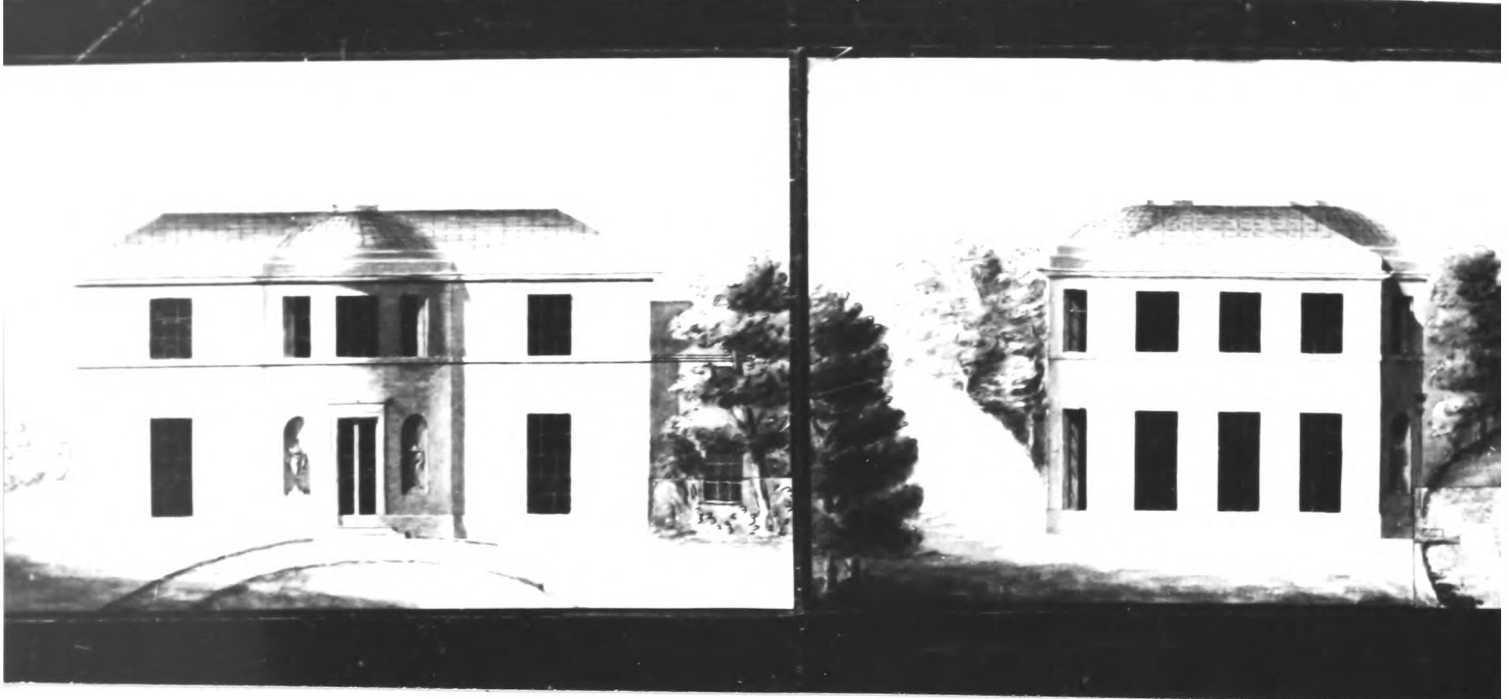
A



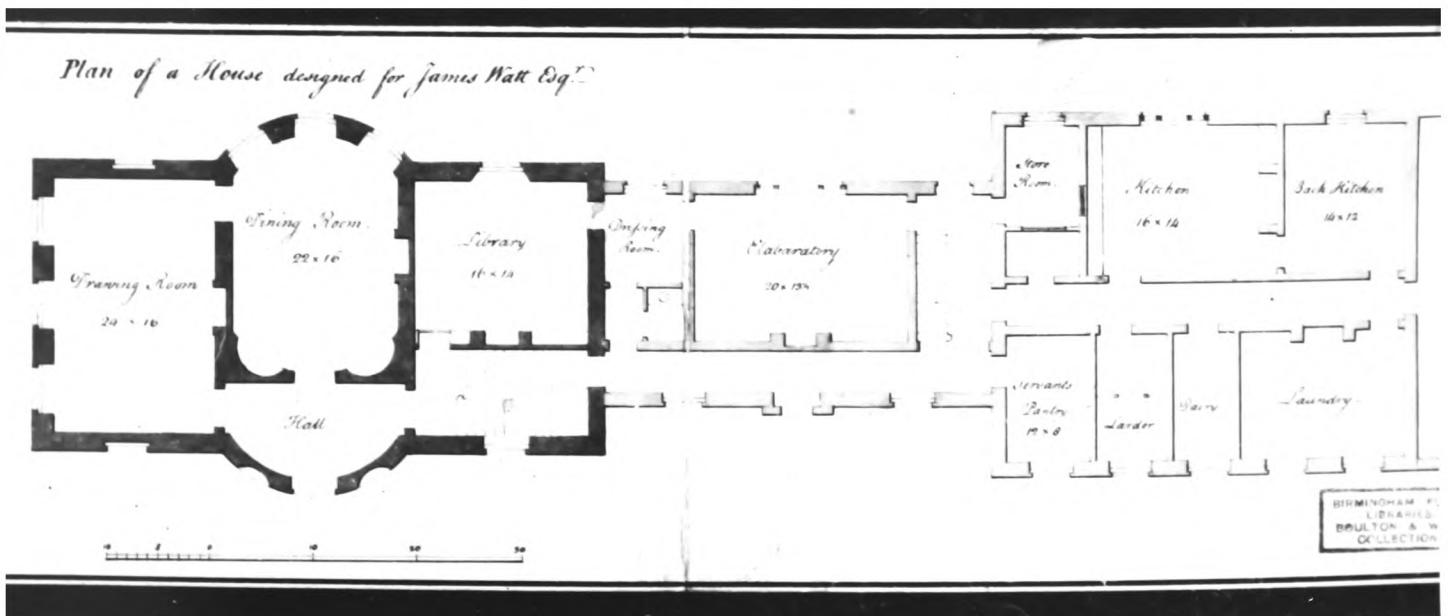
B



A



B



A



B



XXVIII

A



B





XXX



XXXI







XXXIV

A



B



XXXV

A



B



XXXVI

A



B



XXXVII

A



B



XXXVIII

A



B



XXXIX

A



B



XL

A



B



XLI

A



B



XL II



XLIII



XLIV







XLVII



XLVIII

A



B



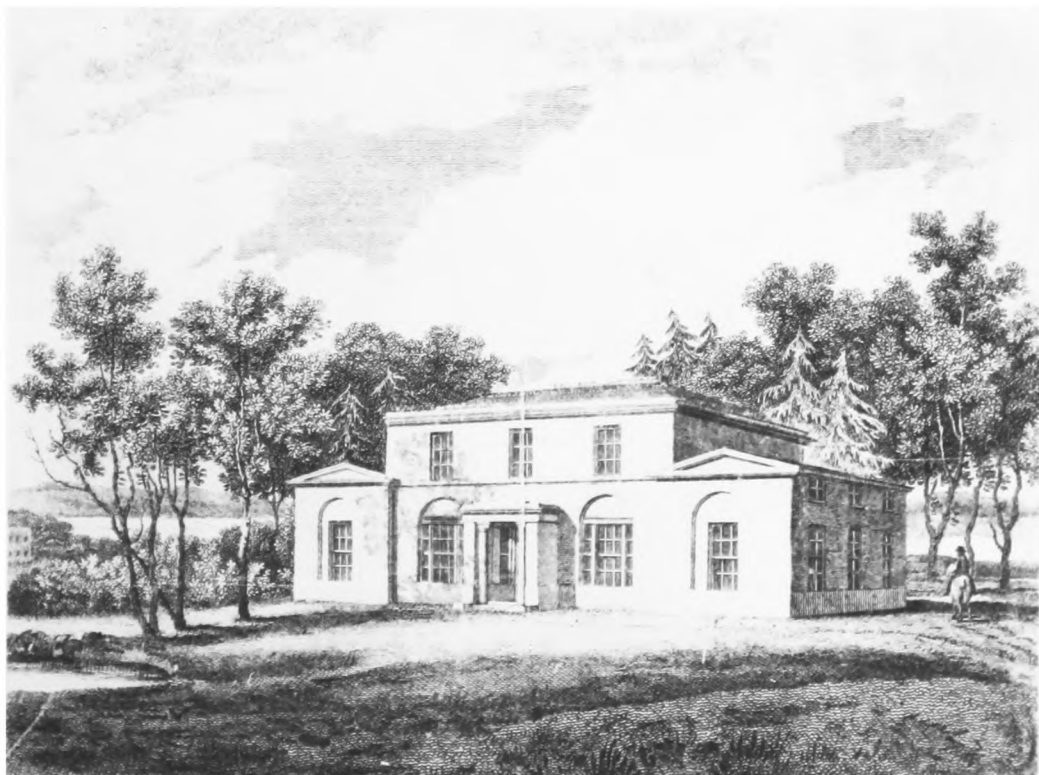


L

A

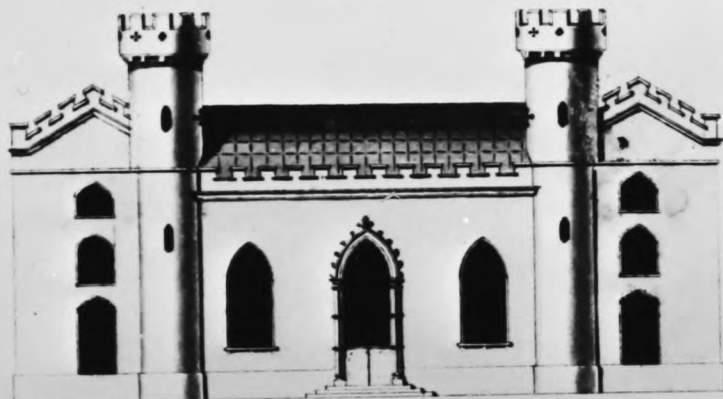


B

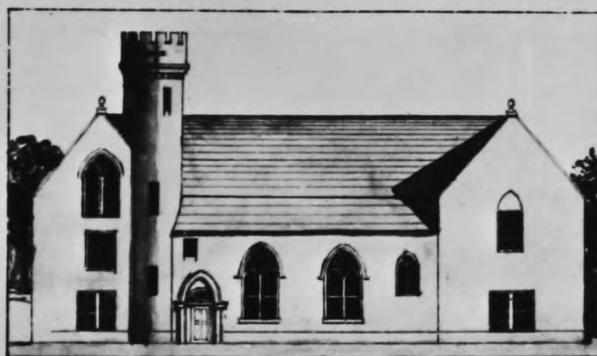


A

*West Front of Penrhyn 1782*



B



LII

A

172

*East Front.* —



B

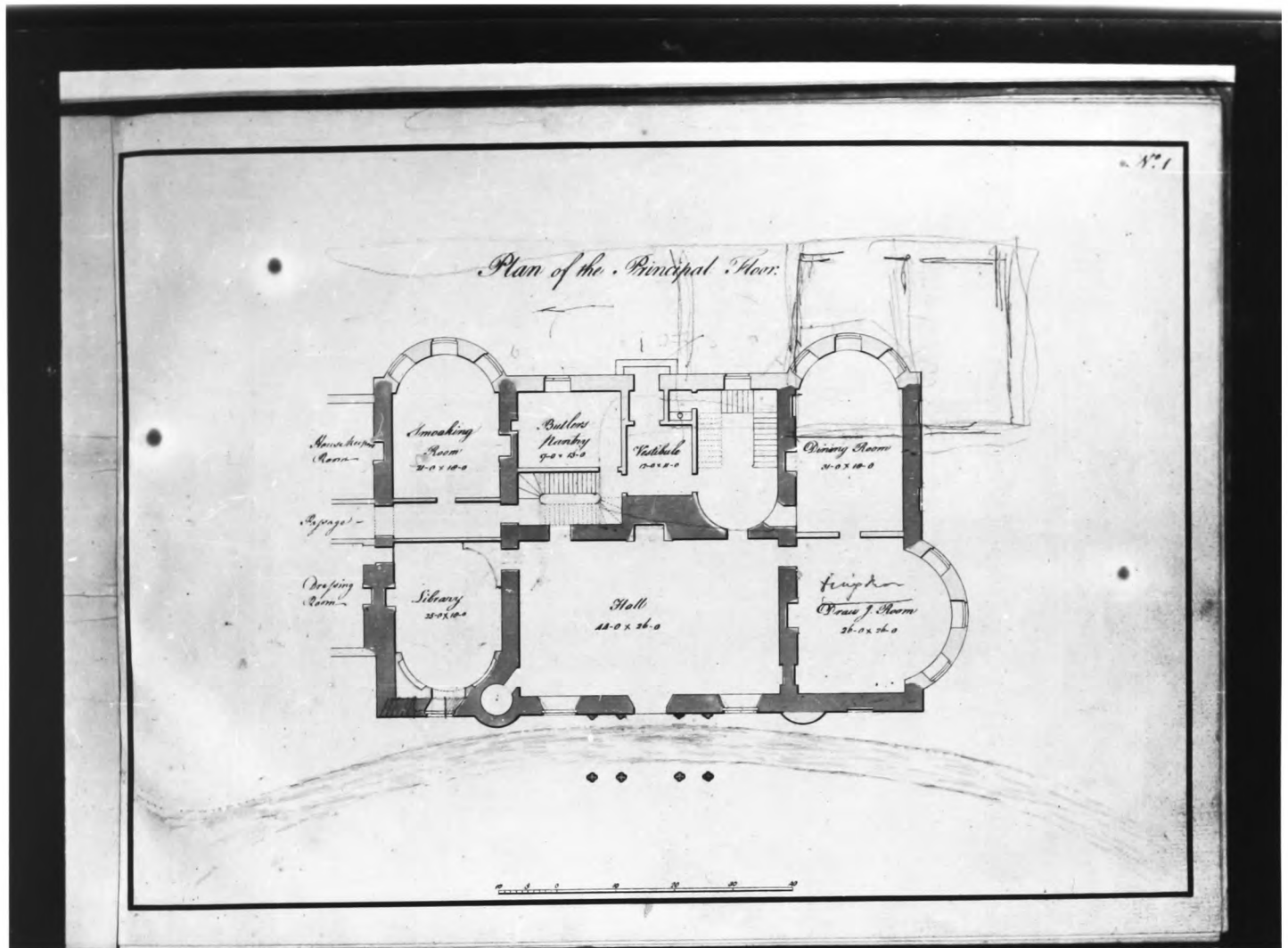
173

*Another Design for the East front.* —

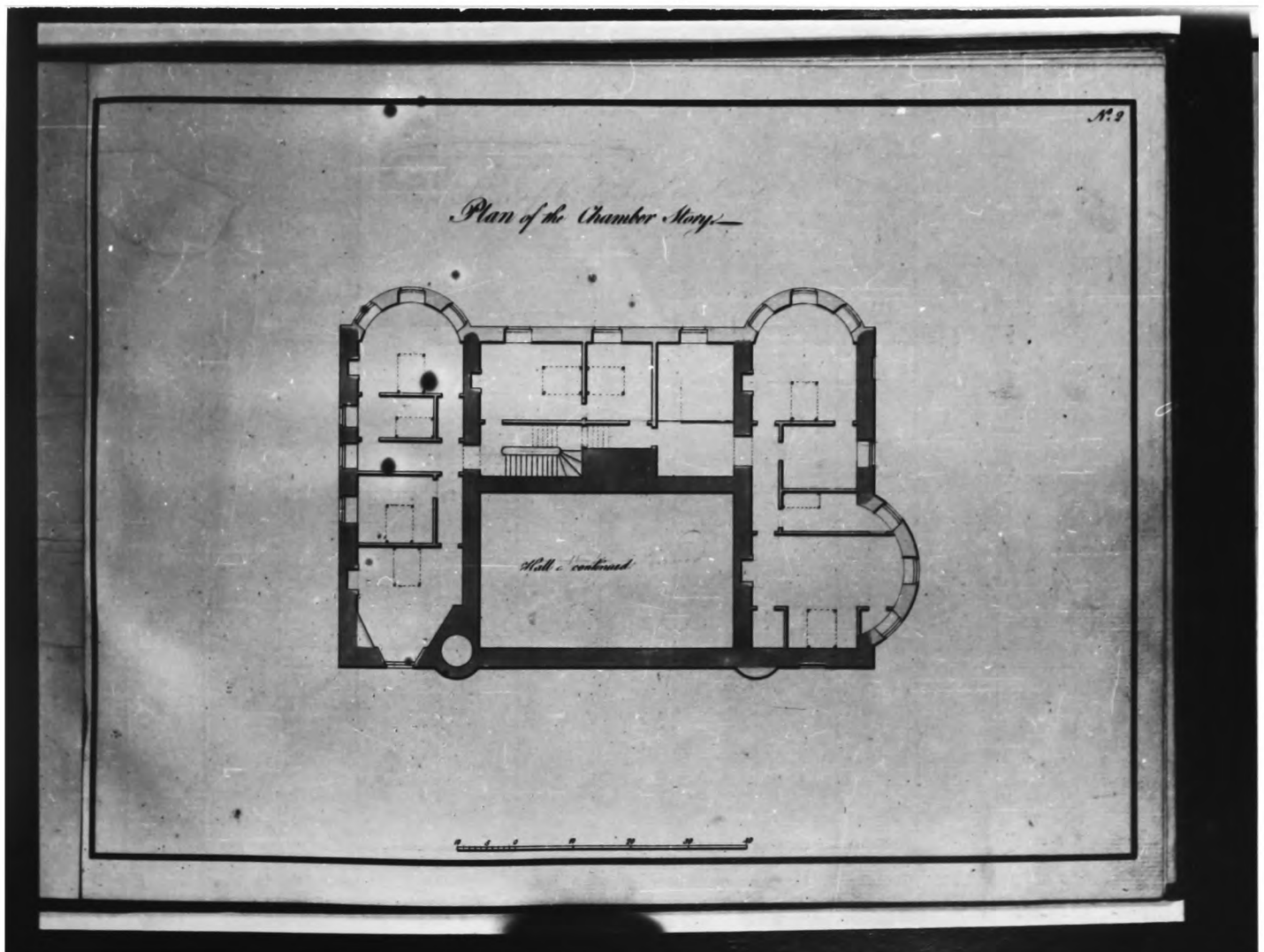


L III

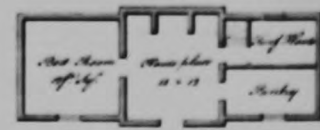
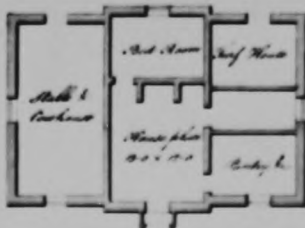
A



B



Three Designs of Cottages or small Farm Houses. —



27



LVI  
A



B



LVII  
A



B











LXII





LXIV



LXV

3



LXVI

A



B



LXVII

A



B



LXVIII

A



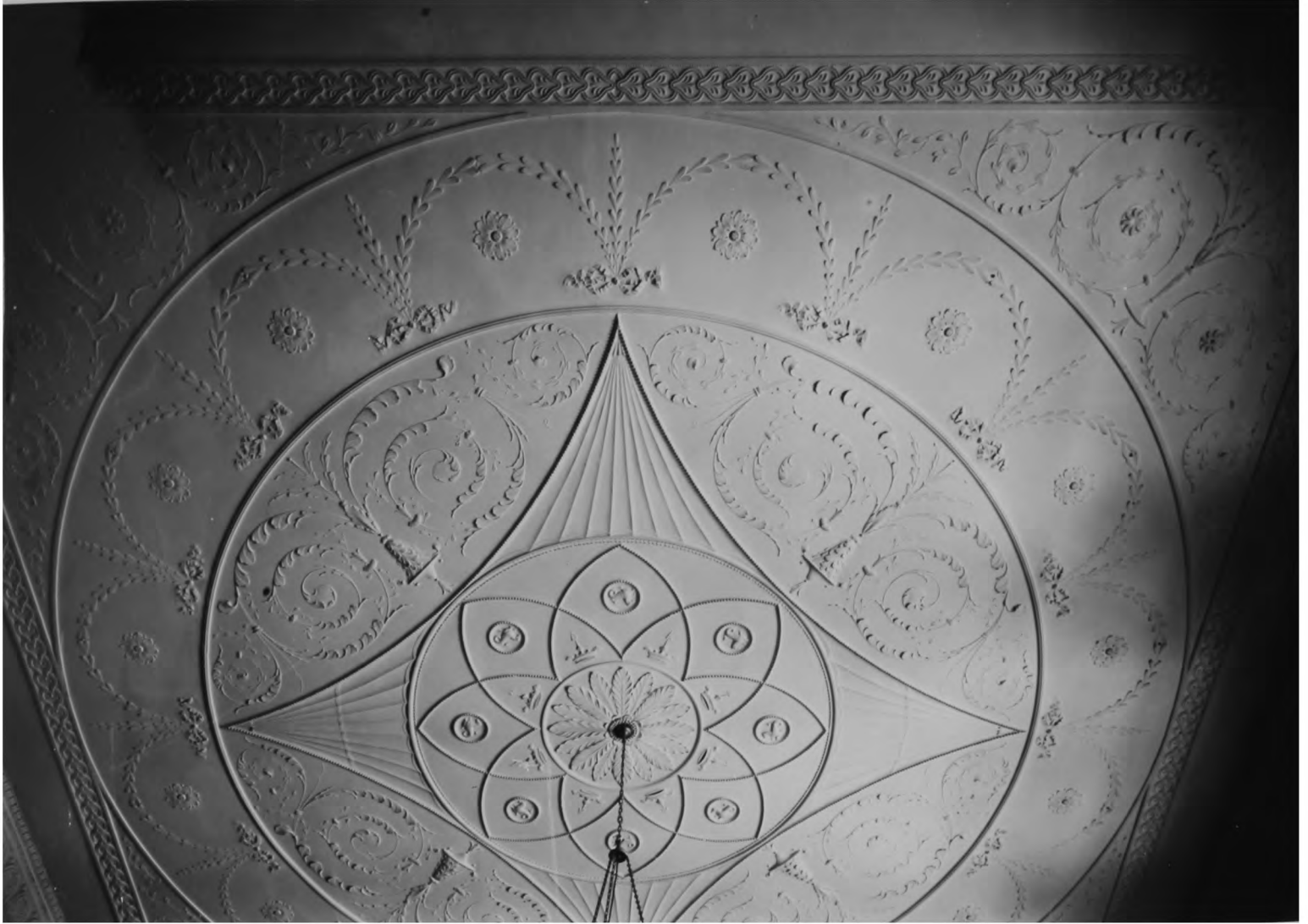
B





LXX

A

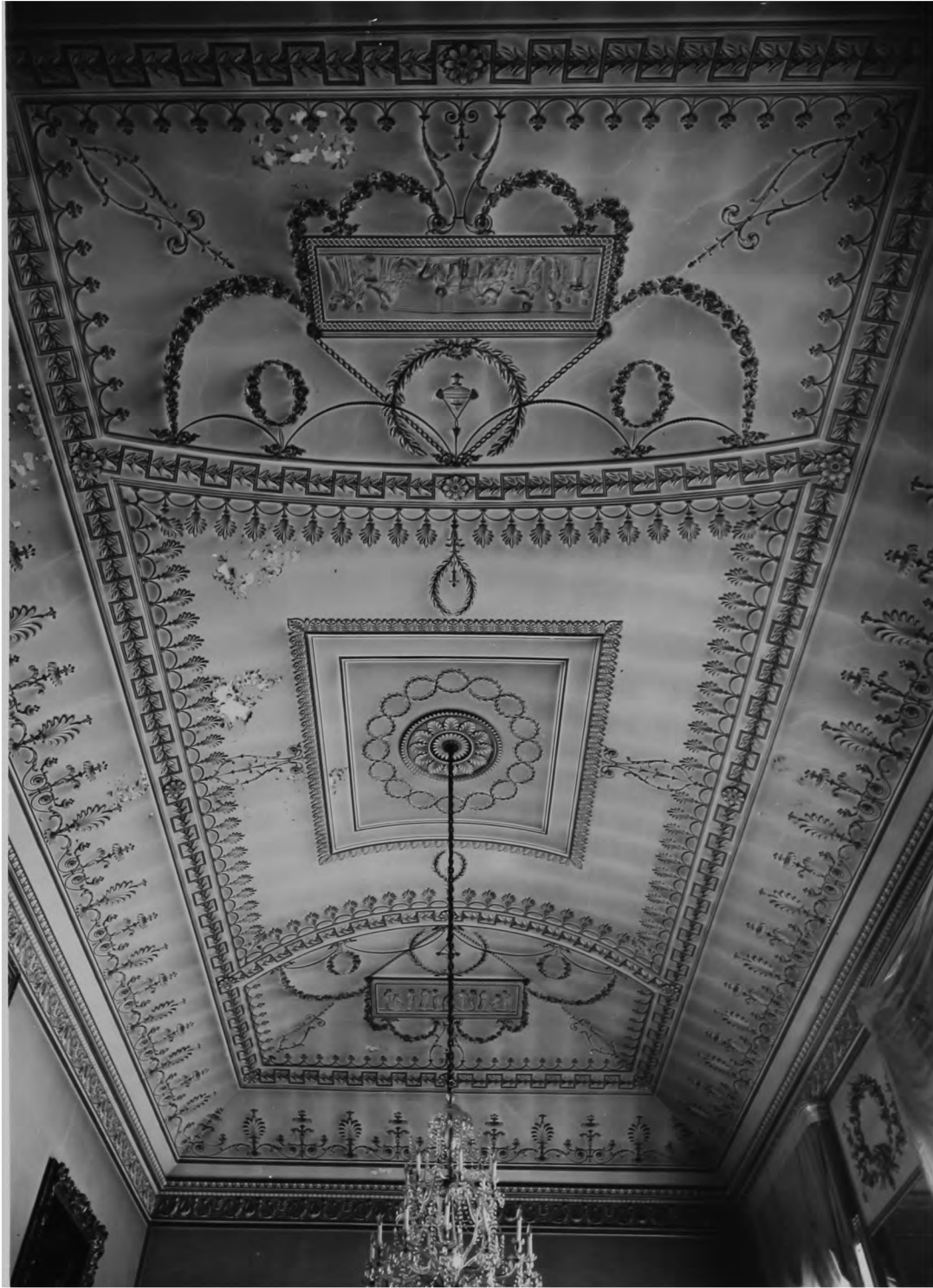


B



LXXI







LXXIV



LXXV



LXXVI



LXXVII







LXXX

A



B



LXXYI



LXXXII

A



B



LXXXIII



LXXXIV

A



B



LXXXV



LXXXVI  
A

*Sketch of the South Front of Salton 1783.*



B

*Elevation of the North Front of Salton Park, the Seat of William Egerton Esq. 1706.*



LXXXVII









Xc1



XCII



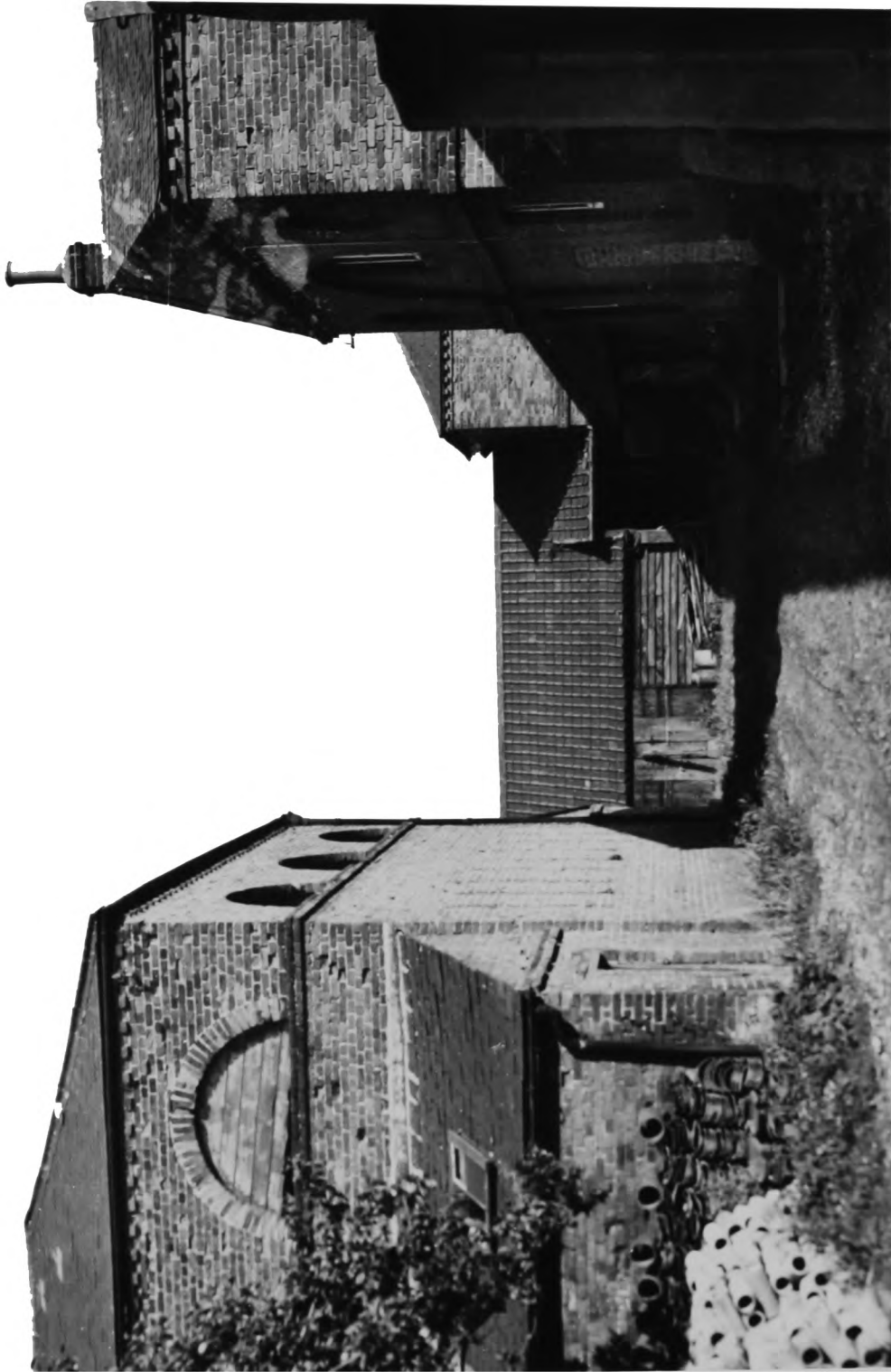
XC III



XCIV



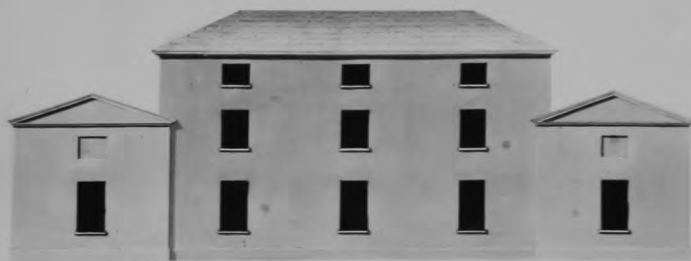
XCV



*South Front of a Steward's Lodge. Designed for the United States Bank.*



*Back Front*



XCVII



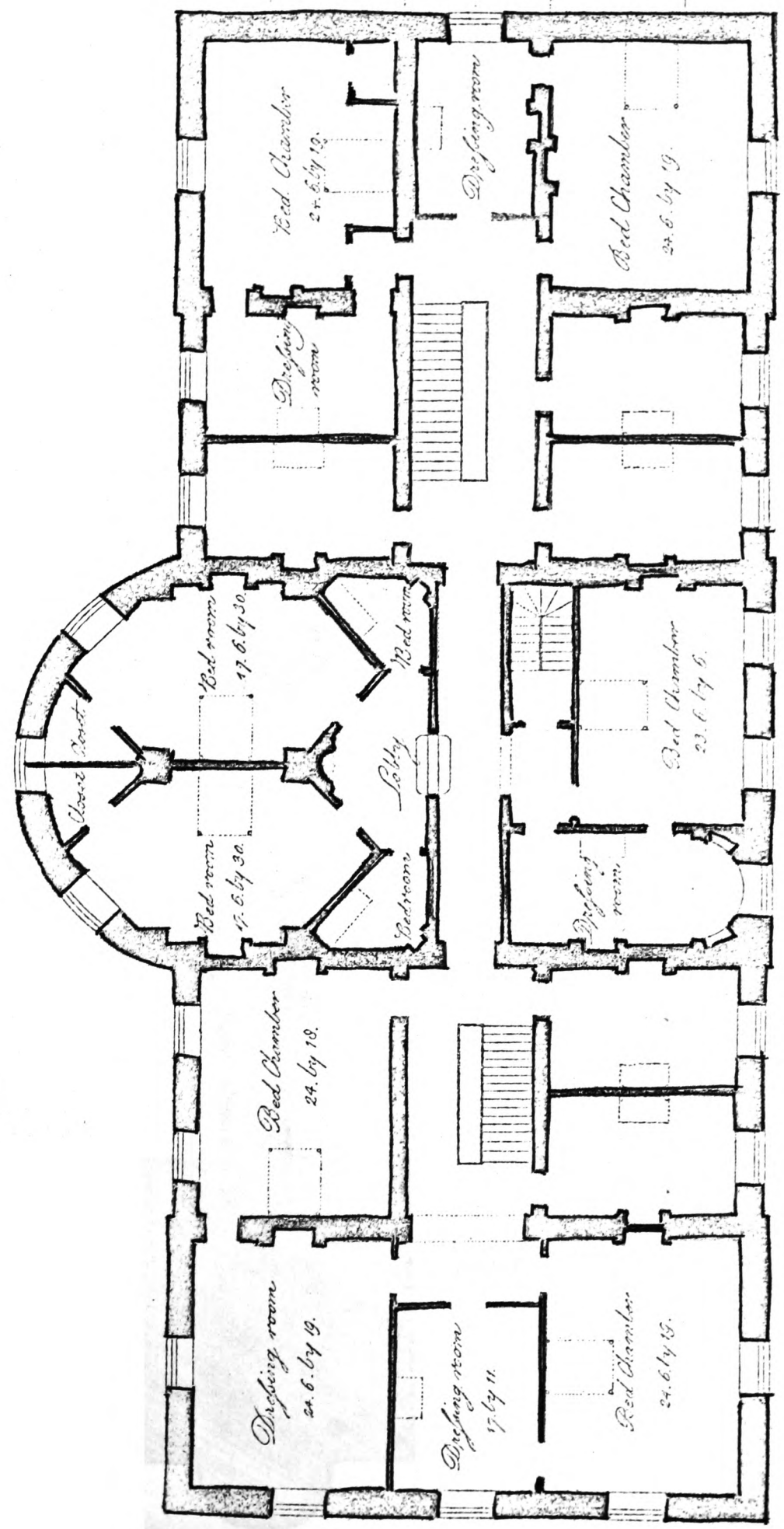




Plans of the Principal & Bed Chamber Stories, of Dodington-Hall, in Cheshire.

Samuel Wyatt Arch<sup>t</sup>

Bed Chamber Story.



Dressing room  
24.6. by 9.

Dressing room  
17 by 11.

Bed Chamber  
24.6. by 15.

Bed Chamber  
24. by 18.

Bed room  
17.6. by 30.

Bed room  
17.6. by 30.

Bed room

Dressing room

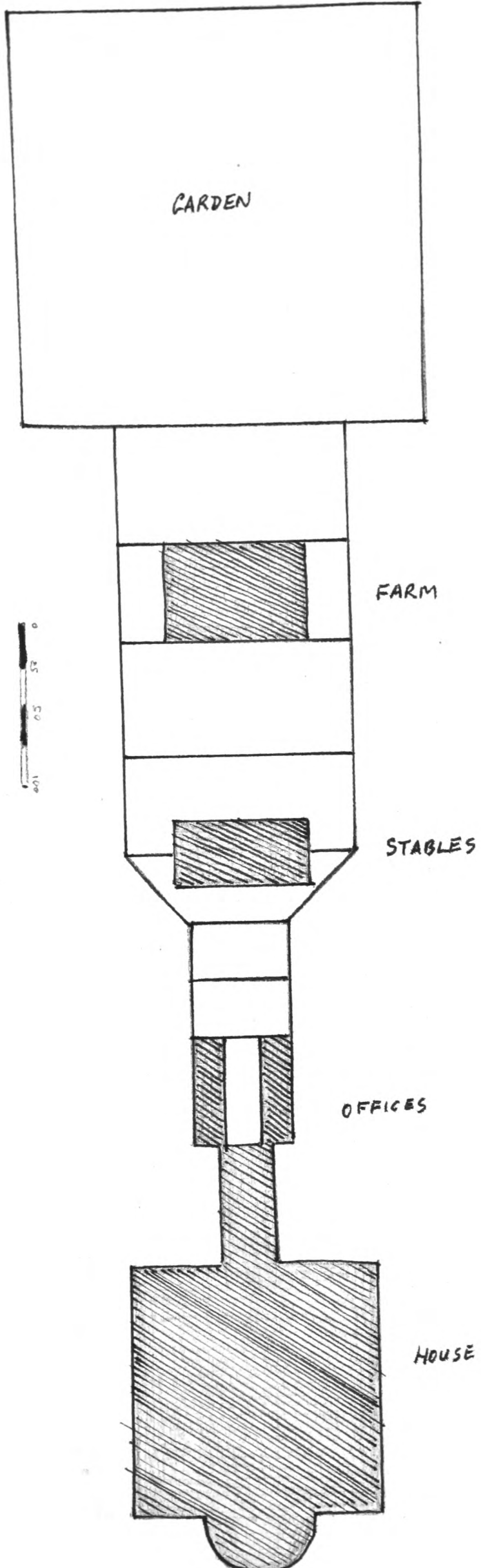
Bed Chamber  
24.6. by 19.

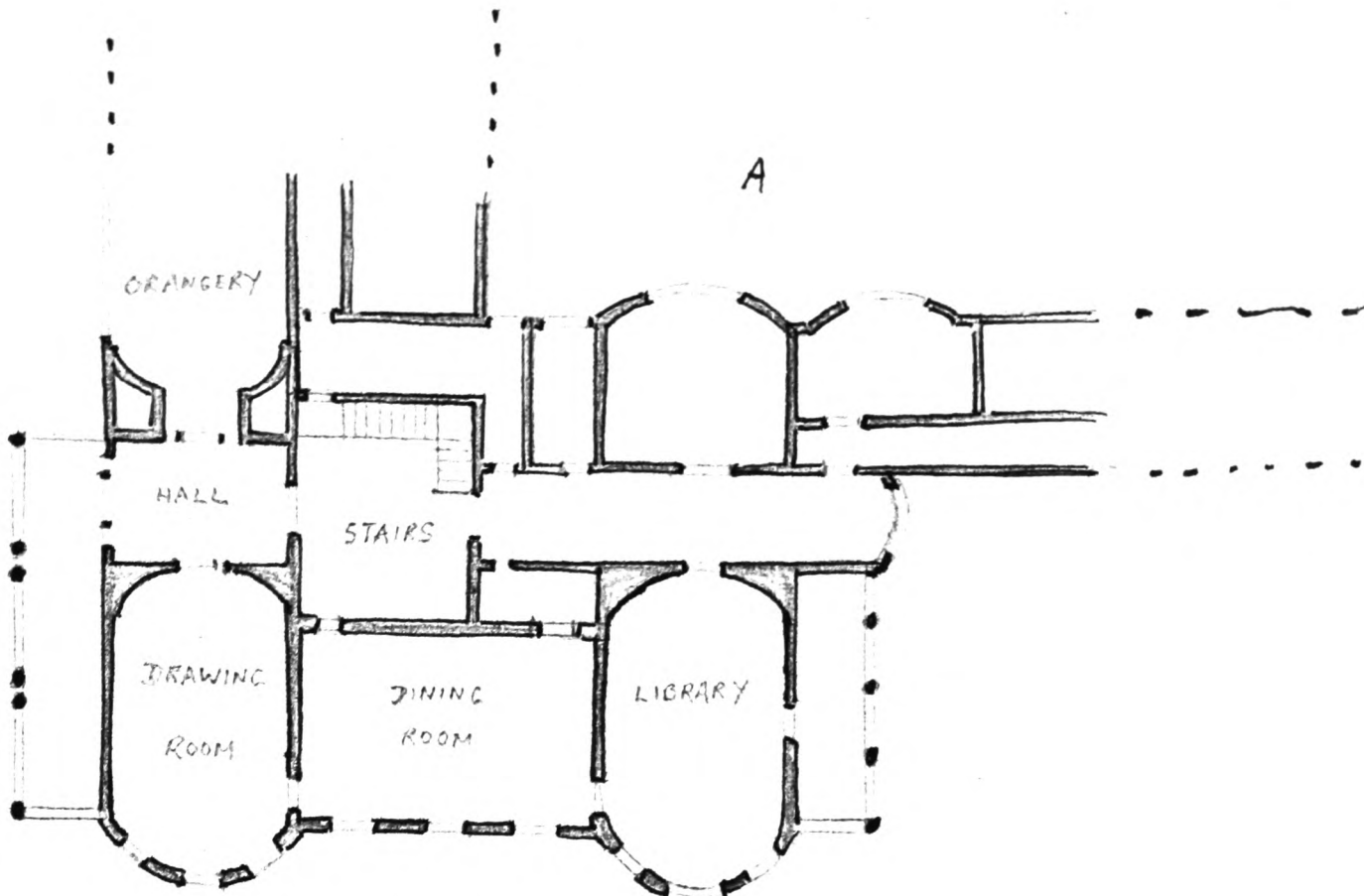
Dressing room

Bed Chamber  
24.6. by 19.

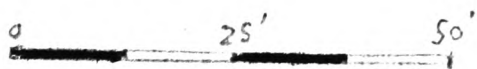
Bed Chamber  
23.6. by 6.

Dressing room

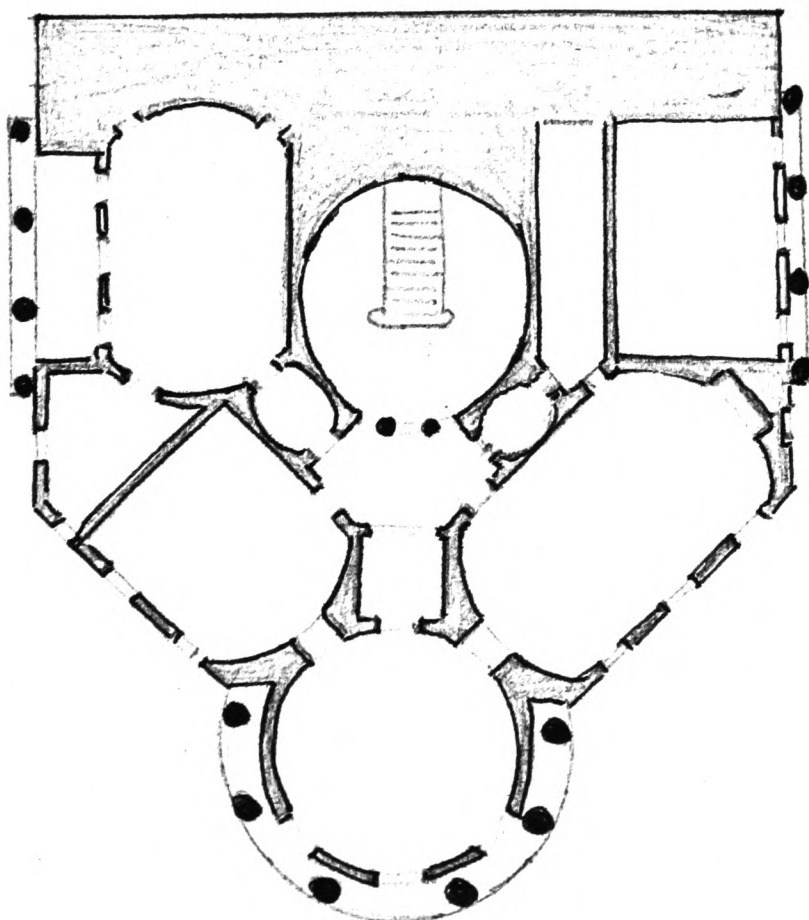




BELMONT



B

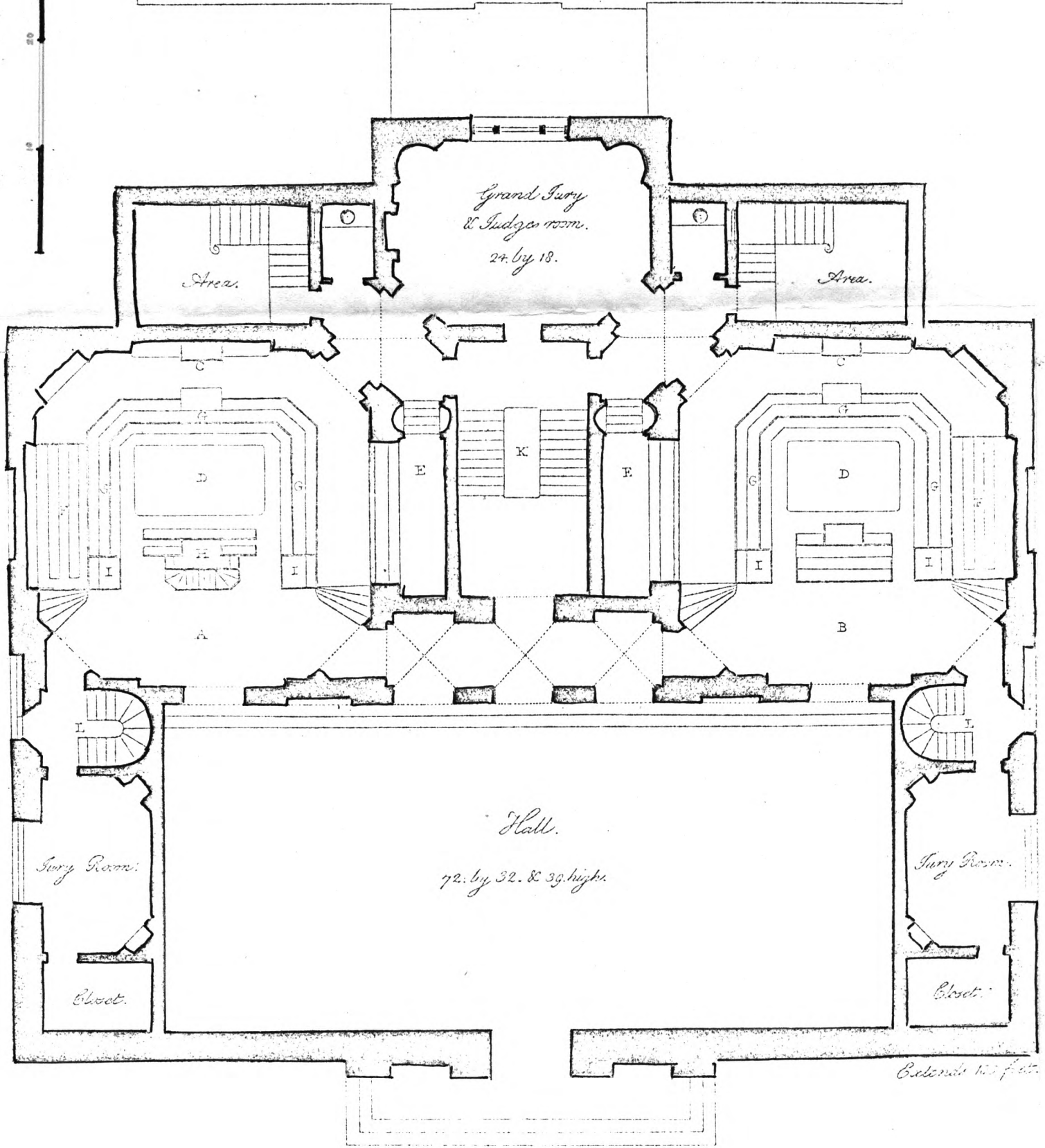


SUNDRIDGE PARK

PLAN

- A The Crown Court.
- B The New Prison Court.
- C The Judges Bench.
- D Table.
- E Galleries for the Grand Jury.
- F Seats for the Petty Jury.
- G Seats for the Council, &c.
- H Prisoners Bar & Stairs to

- the Prisoners room in the Basement story.
- I Passes for the Clerk of the Courts & Witnesses.
- K Staircase to the Galleries and Basement story.
- L Staircase to Galleries over the Jury room &c.

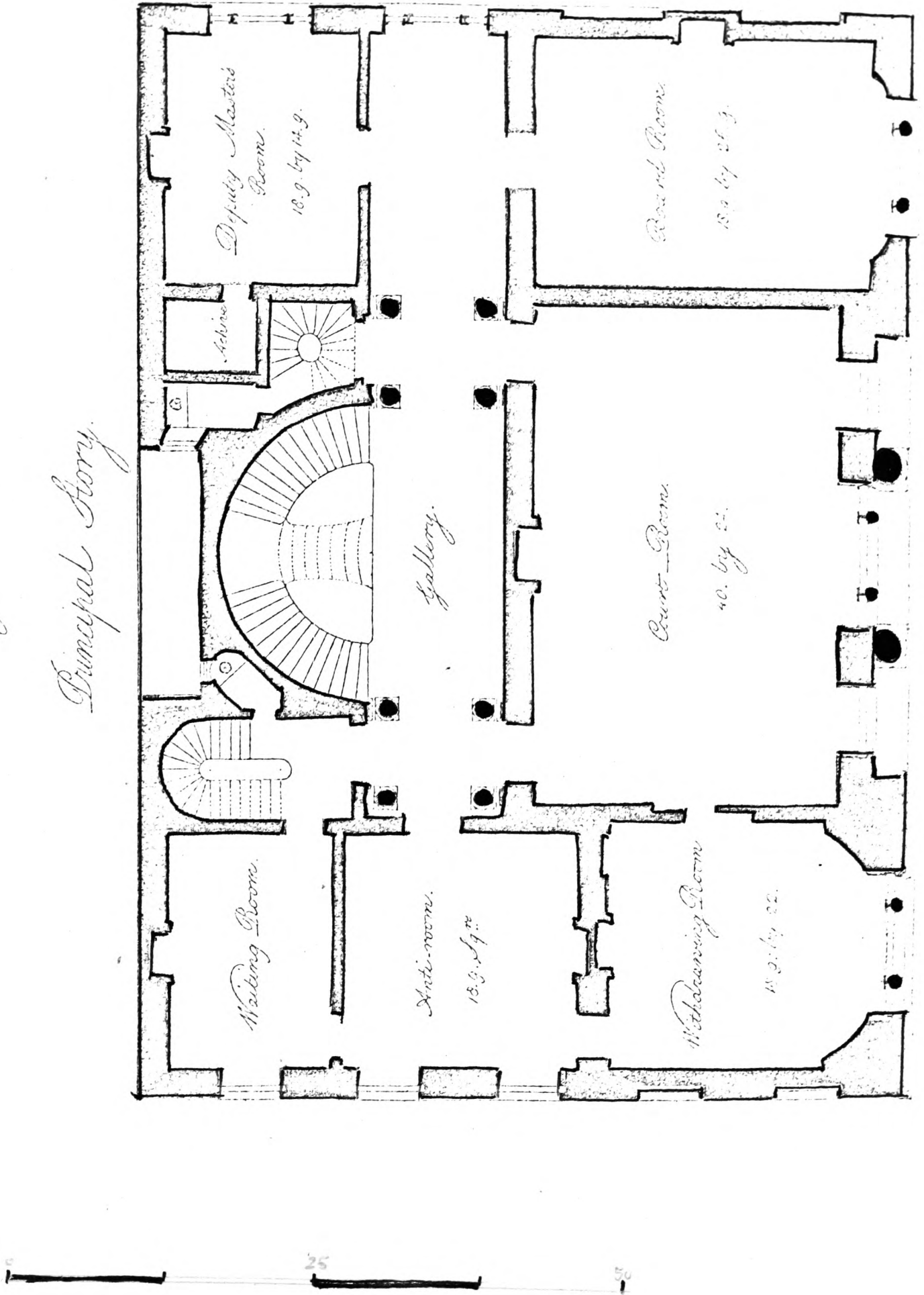


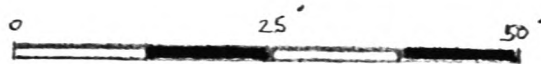
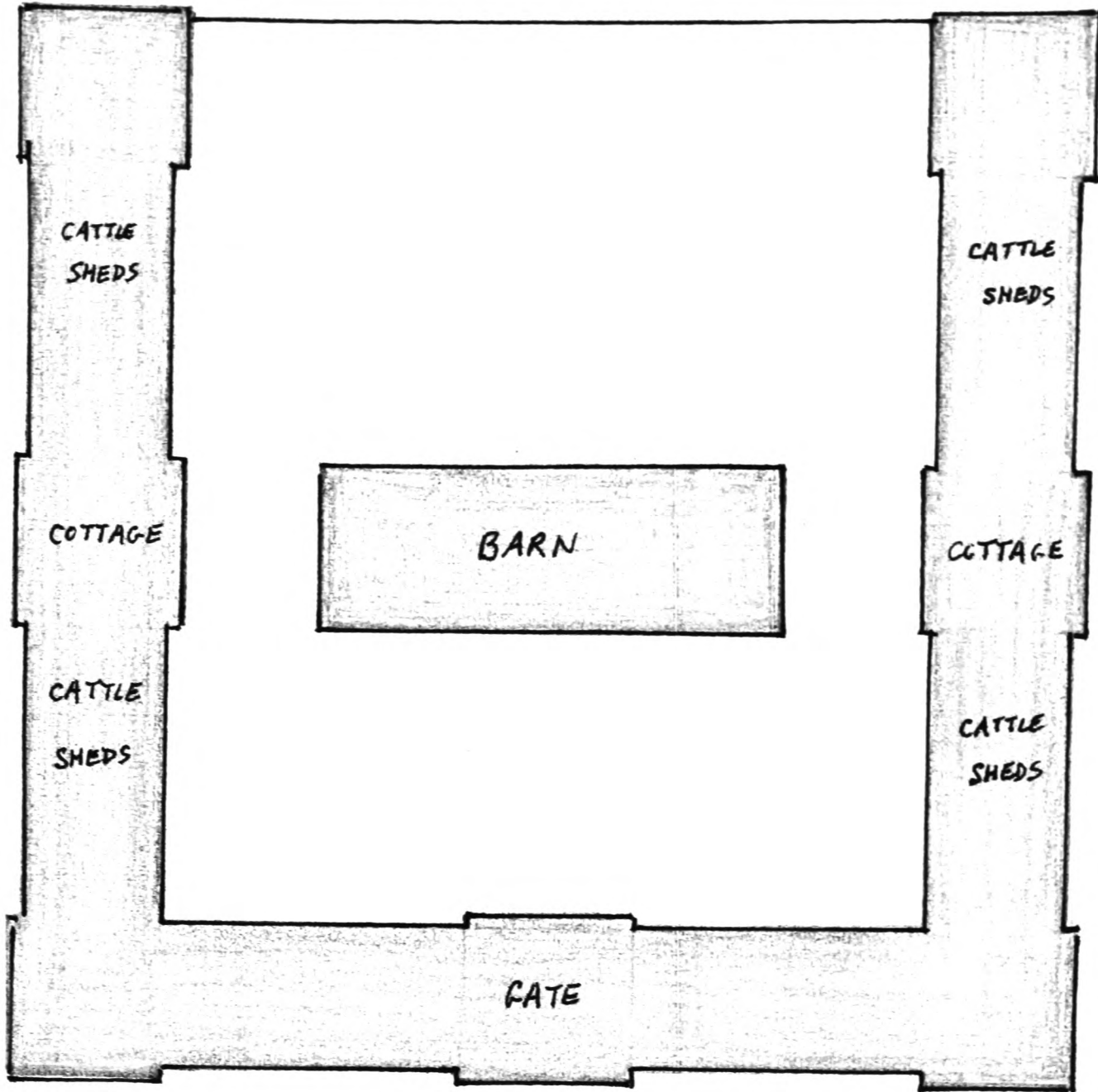
10 20 30 40 50 Feet

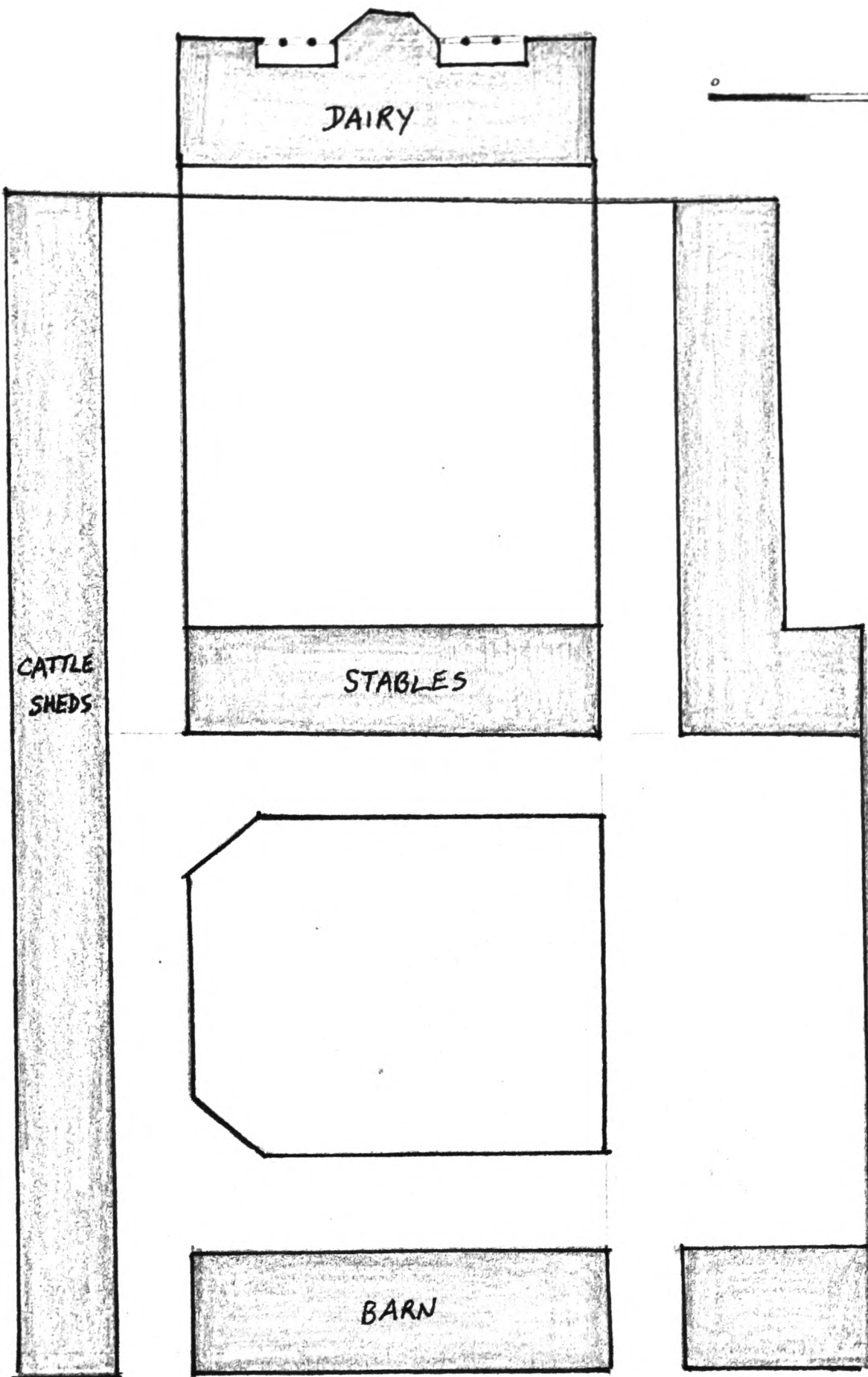
Plans of the Trinity House, erected on Great Tower Hill, London.

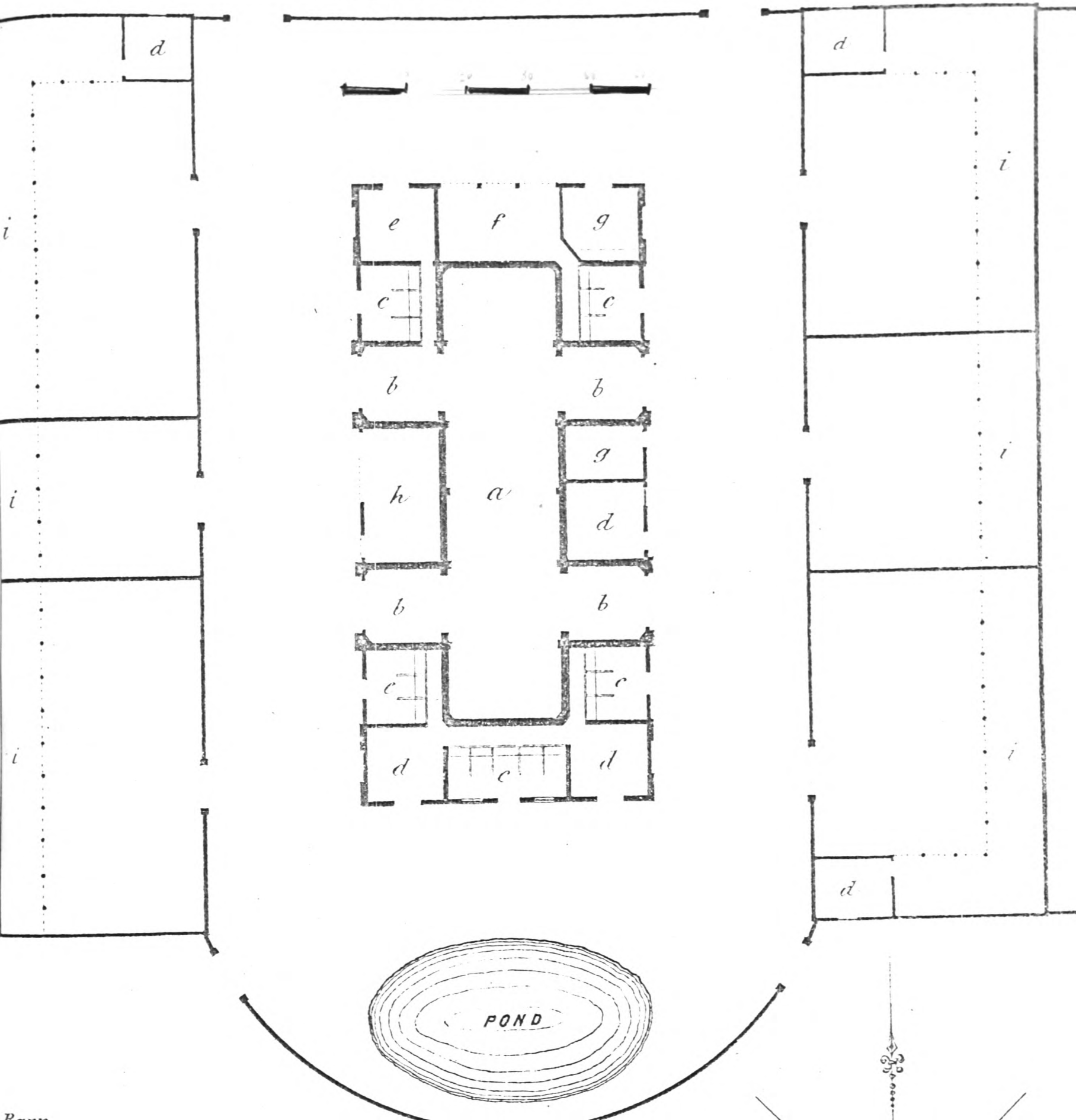
J. Wyatt Architect.

Principal Story.



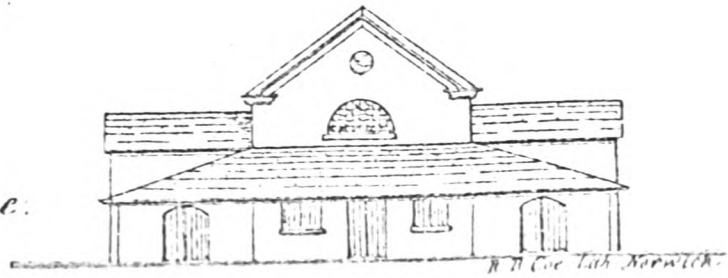






GROUND PLAN.

- Barn.
- Portals to *St*
- Leanto Sheds for Stall Beasts.
- Turnips, Oil Cake, Hay, &c.
- Granary.
- Cart Lodge.
- Baiting Stables.
- Horse Track & Thrash<sup>g</sup> Machine.
- Cattle Sheds.



ELEVATION

