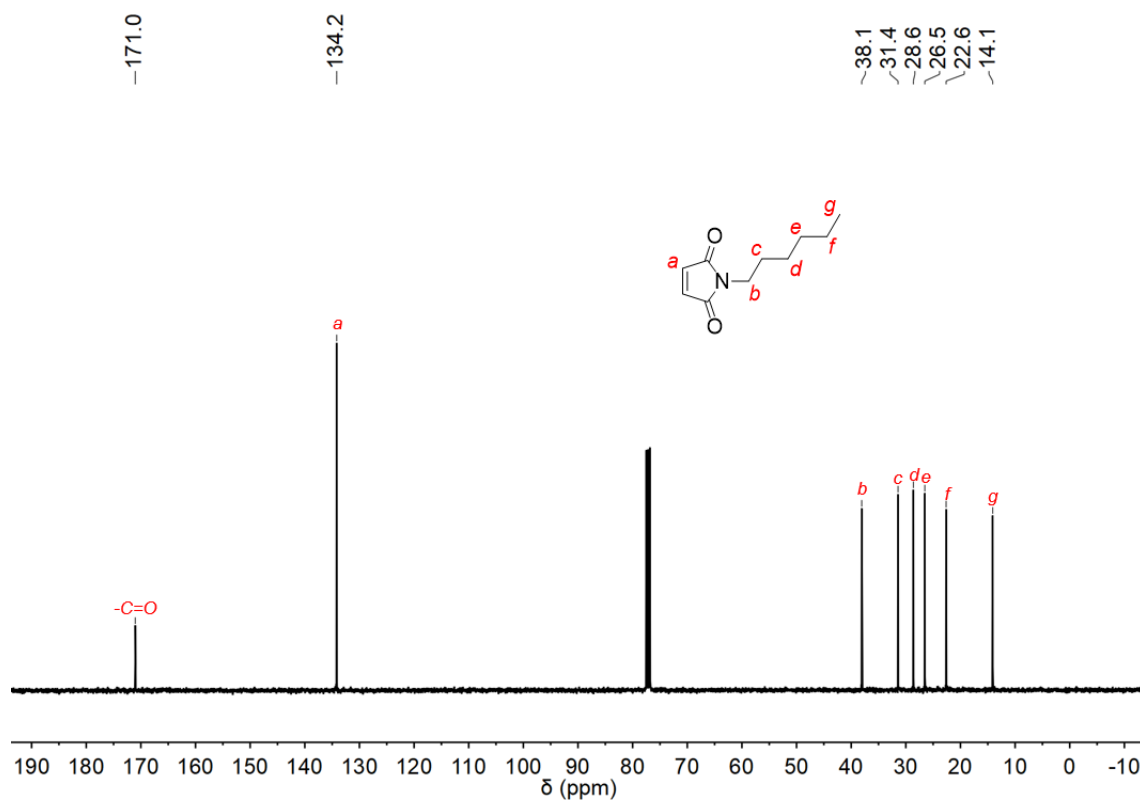
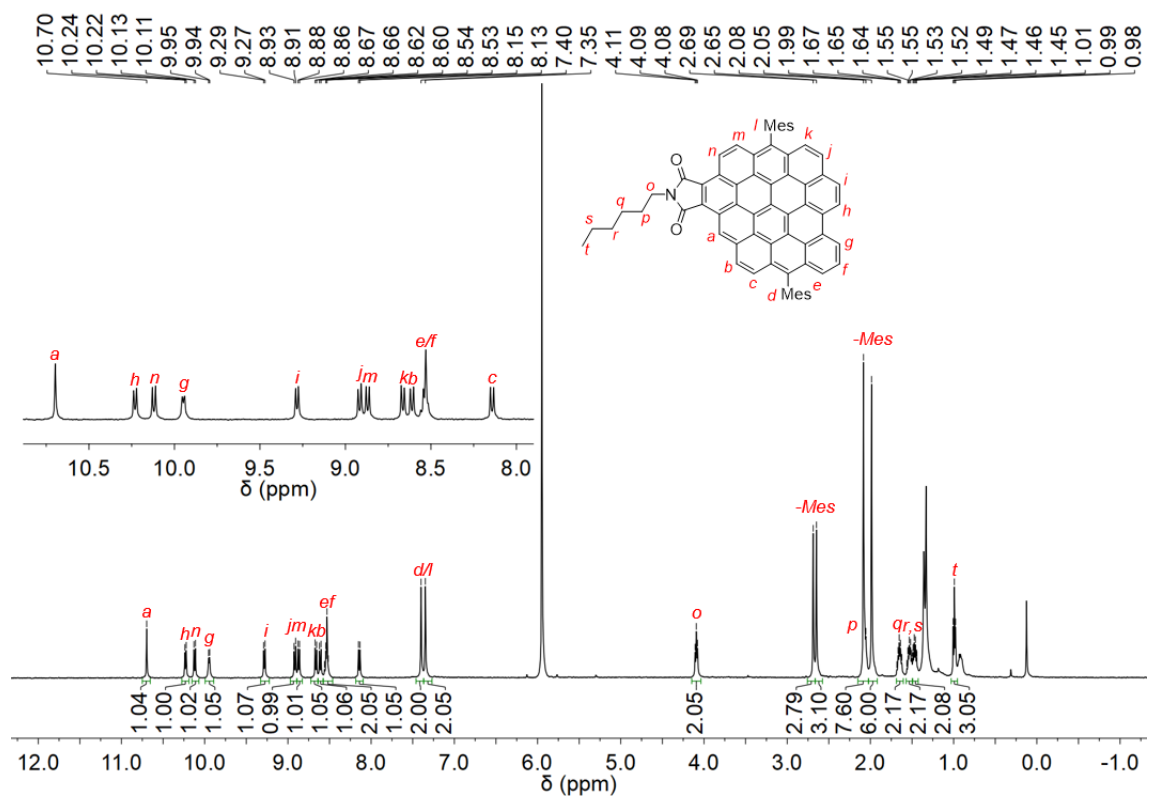


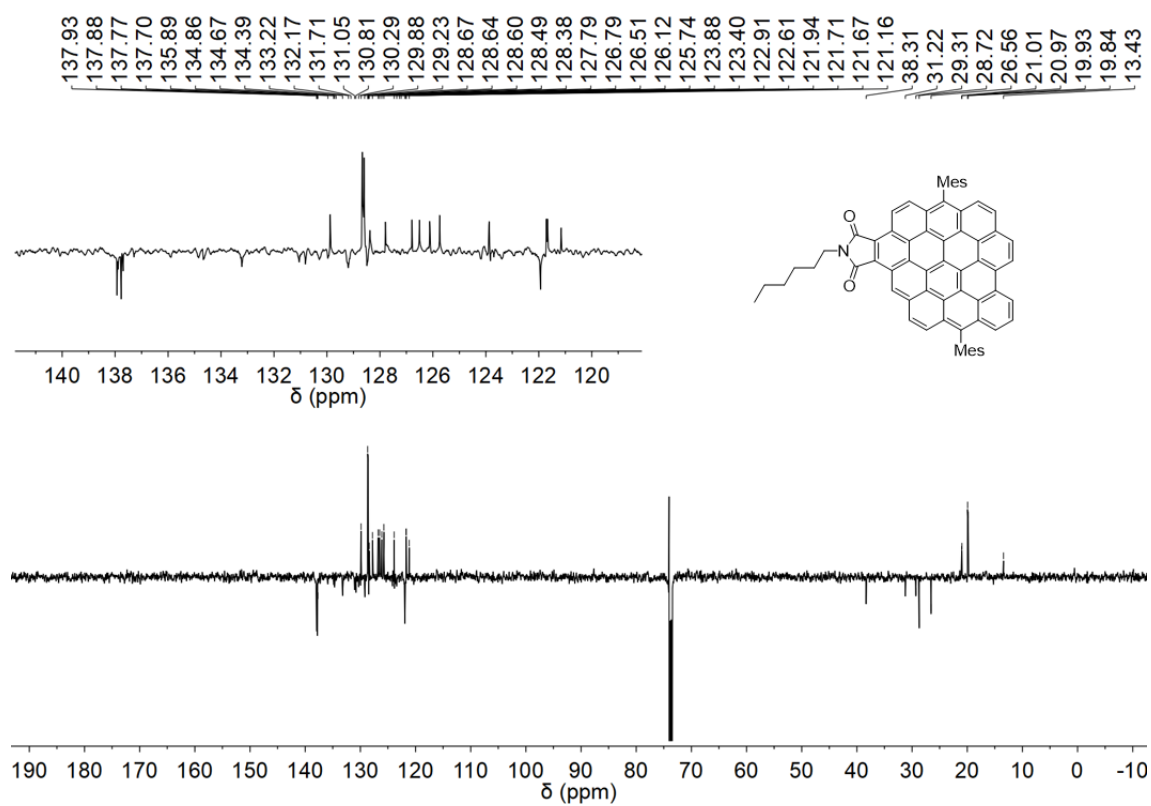
¹H NMR spectrum of *N*-*n*-hexylmaleimide (**2a**) (CDCl₃, 400 MHz, 298 K).



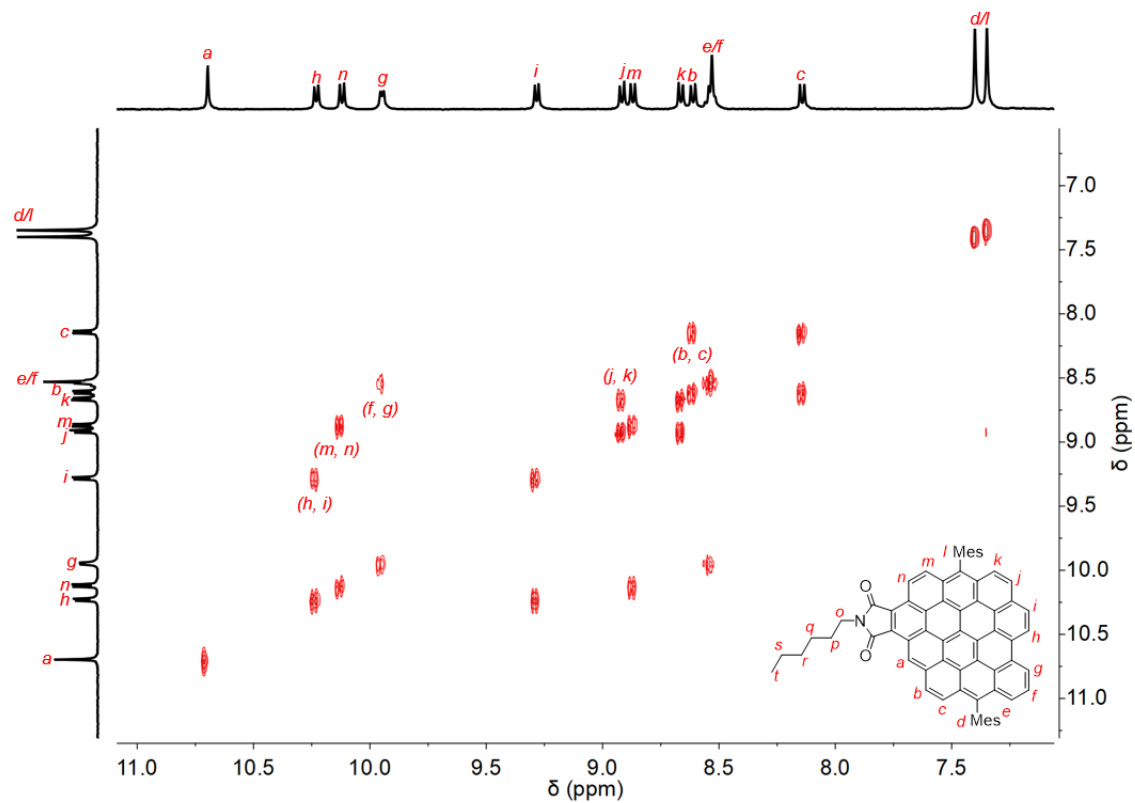
¹³C NMR spectrum of *N*-*n*-hexylmaleimide (**2a**) (CDCl₃, 100 MHz, 298 K).



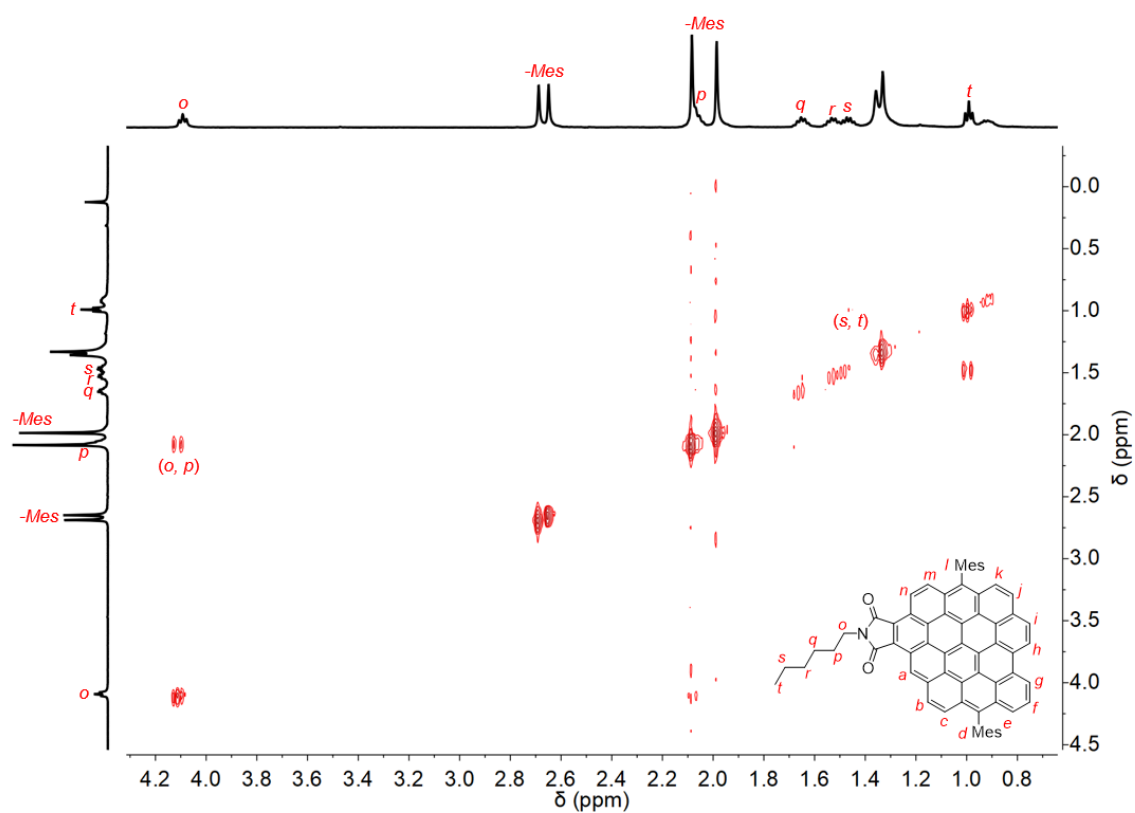
¹H NMR spectrum of mono-adduct **3a** (C₂D₂Cl₄, 500 MHz, 413 K).



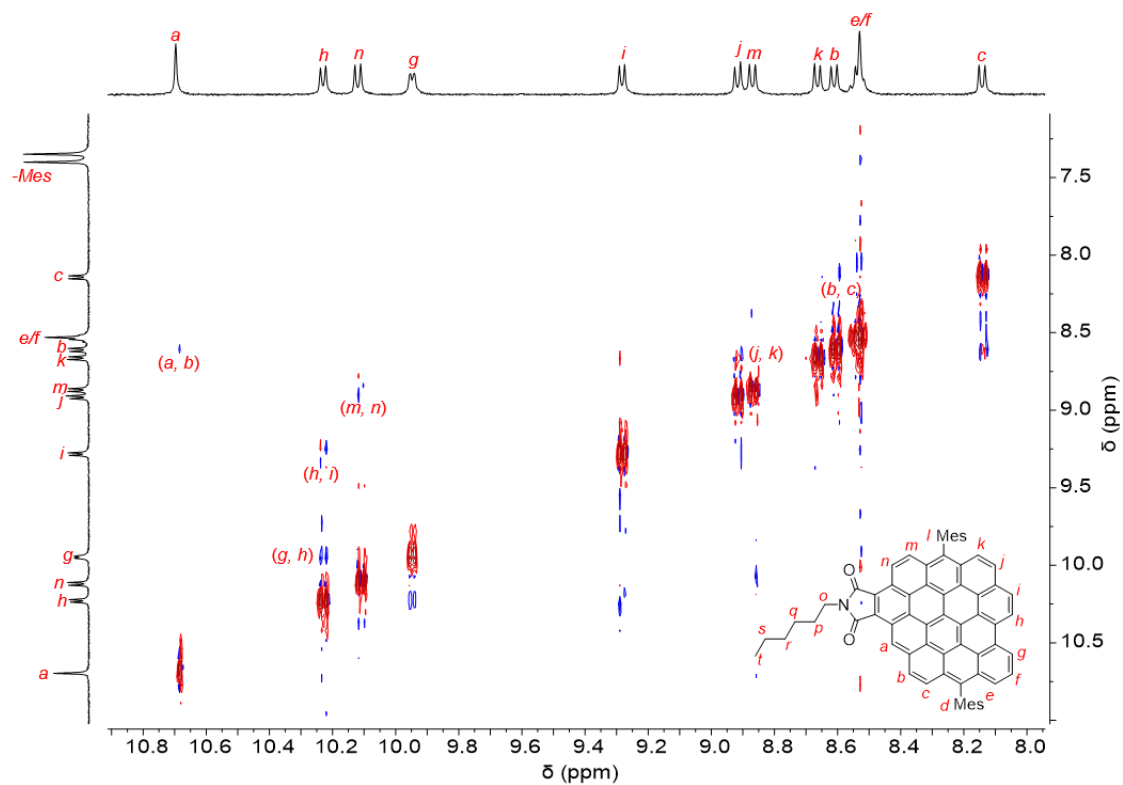
APT ¹³C NMR of mono-adduct **3a** (C₂D₂Cl₄, 125 MHz, 413 K).



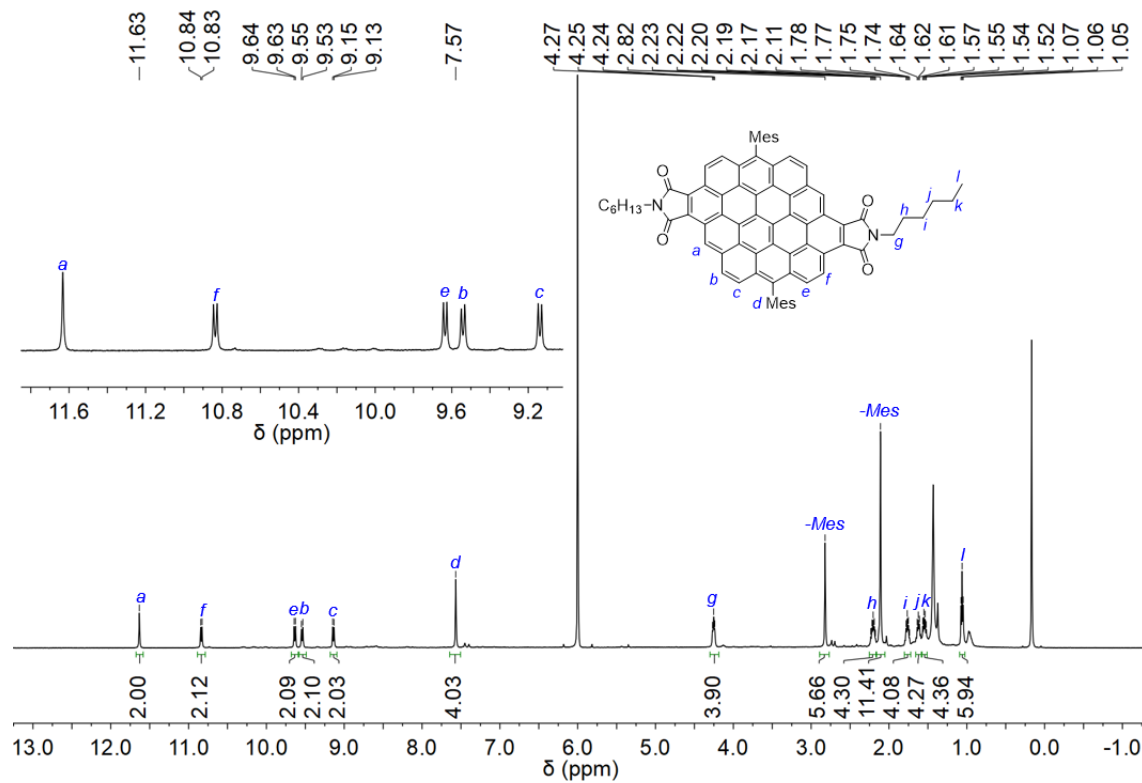
Aromatic region of ^1H , ^1H -COSY spectrum of mono-adduct **3a** ($\text{C}_2\text{D}_2\text{Cl}_4$, 500 MHz, 413 K).



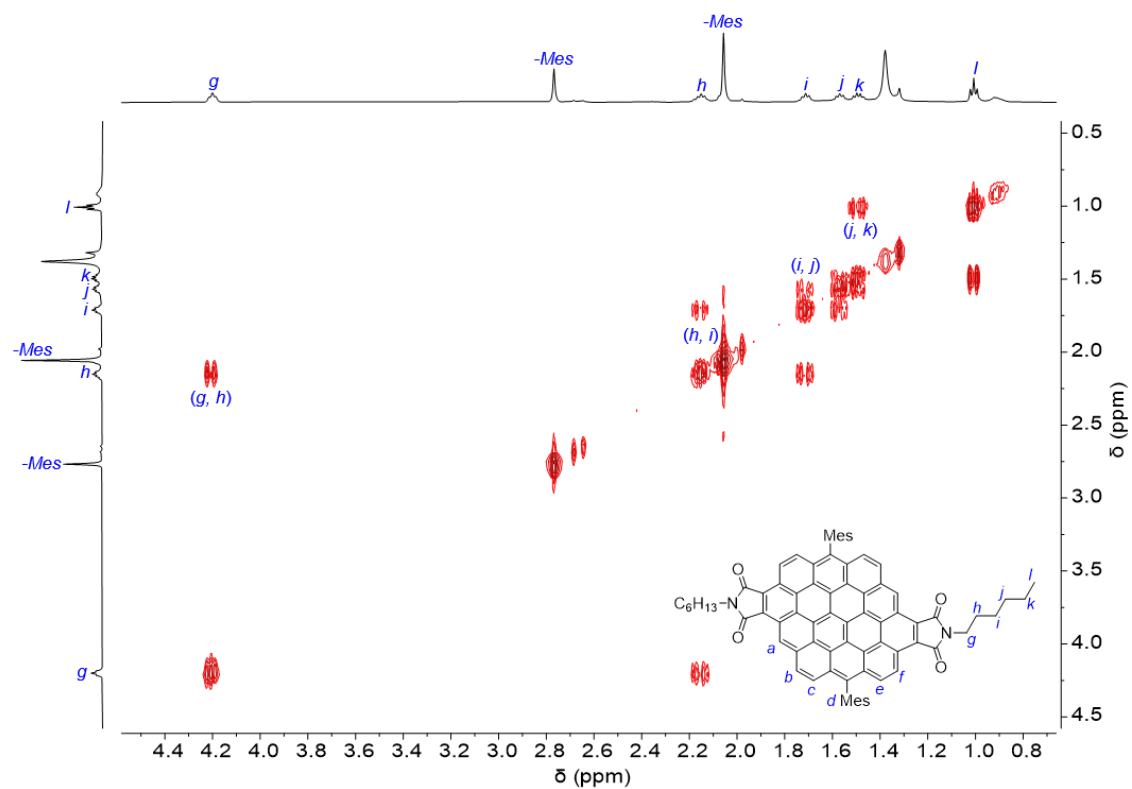
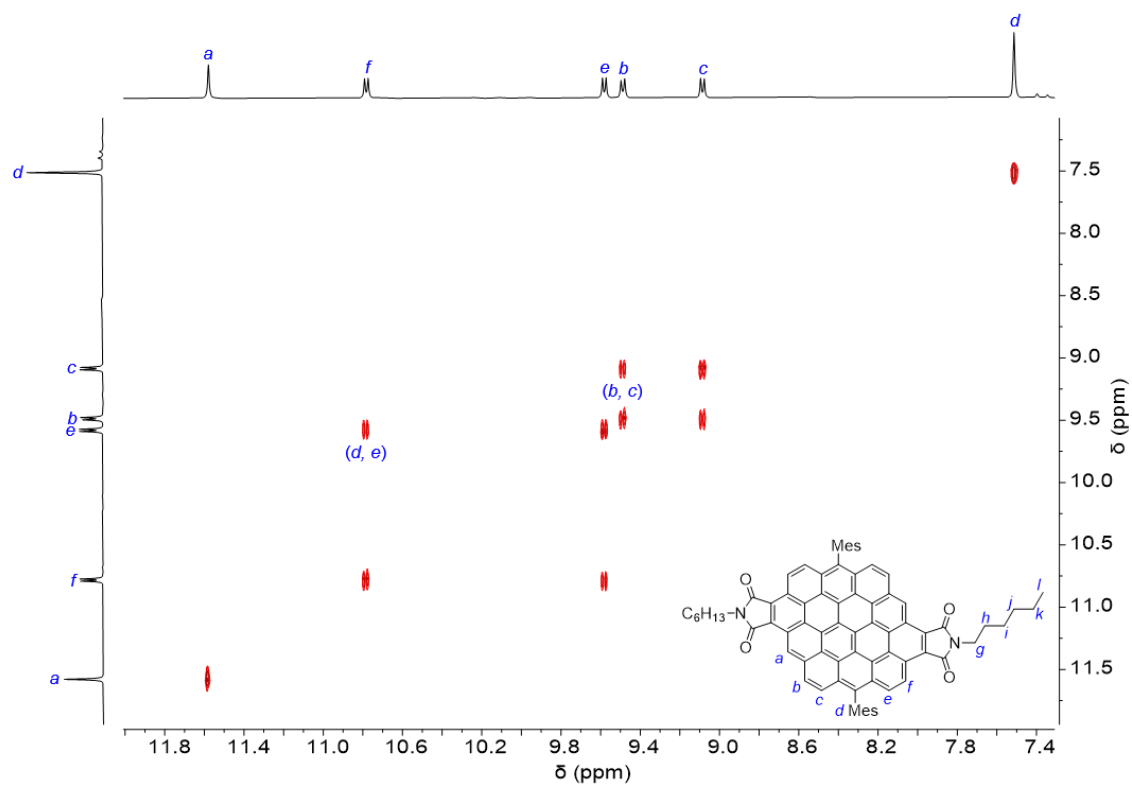
Aliphatic region of ^1H , ^1H -COSY spectrum of mono-adduct **3a** ($\text{C}_2\text{D}_2\text{Cl}_4$, 500 MHz, 413 K).

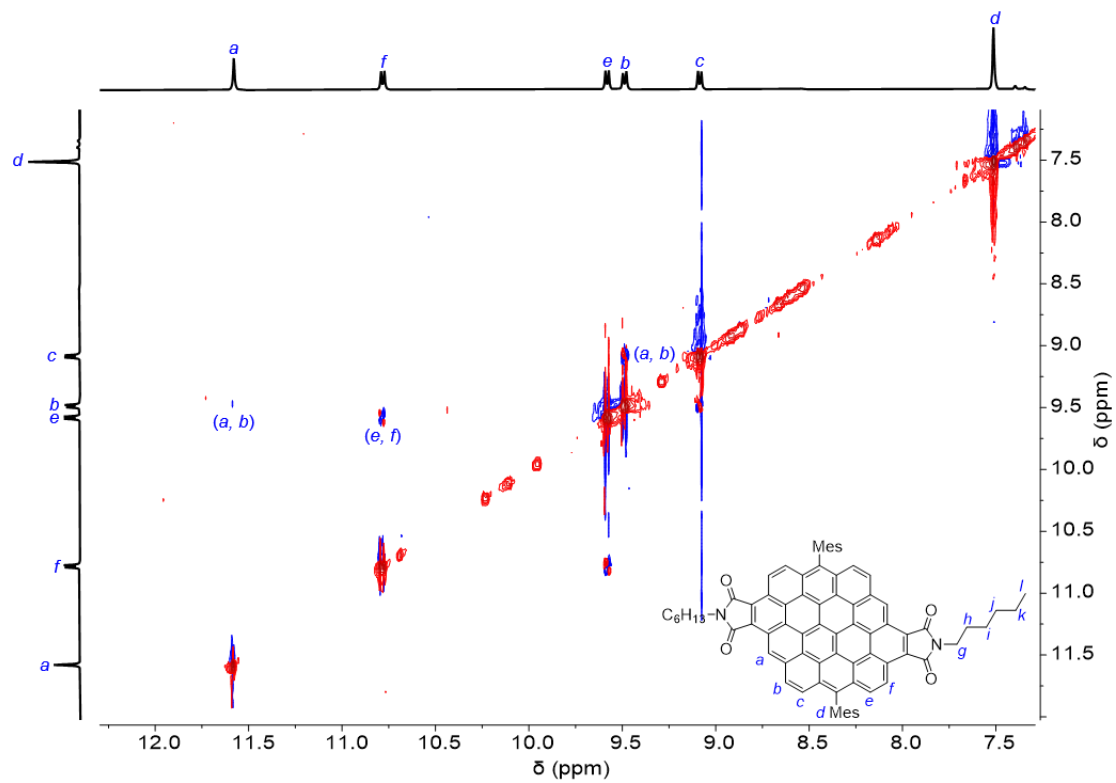


Aromatic region of ^1H , ^1H -NOE spectrum of mono-adduct **3a** ($\text{C}_2\text{D}_2\text{Cl}_4$, 500 MHz, 413 K).

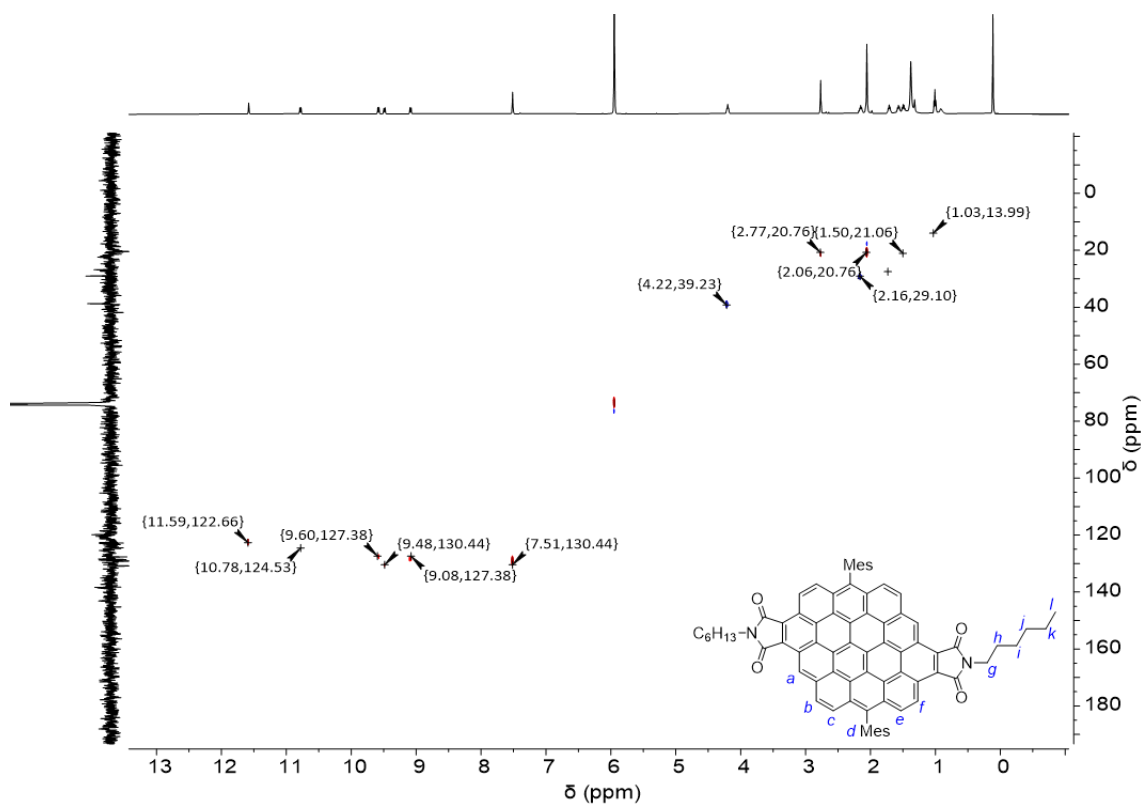


^1H NMR spectrum of di-adduct **4a** ($\text{C}_2\text{D}_2\text{Cl}_4$, 500 MHz, 413 K).

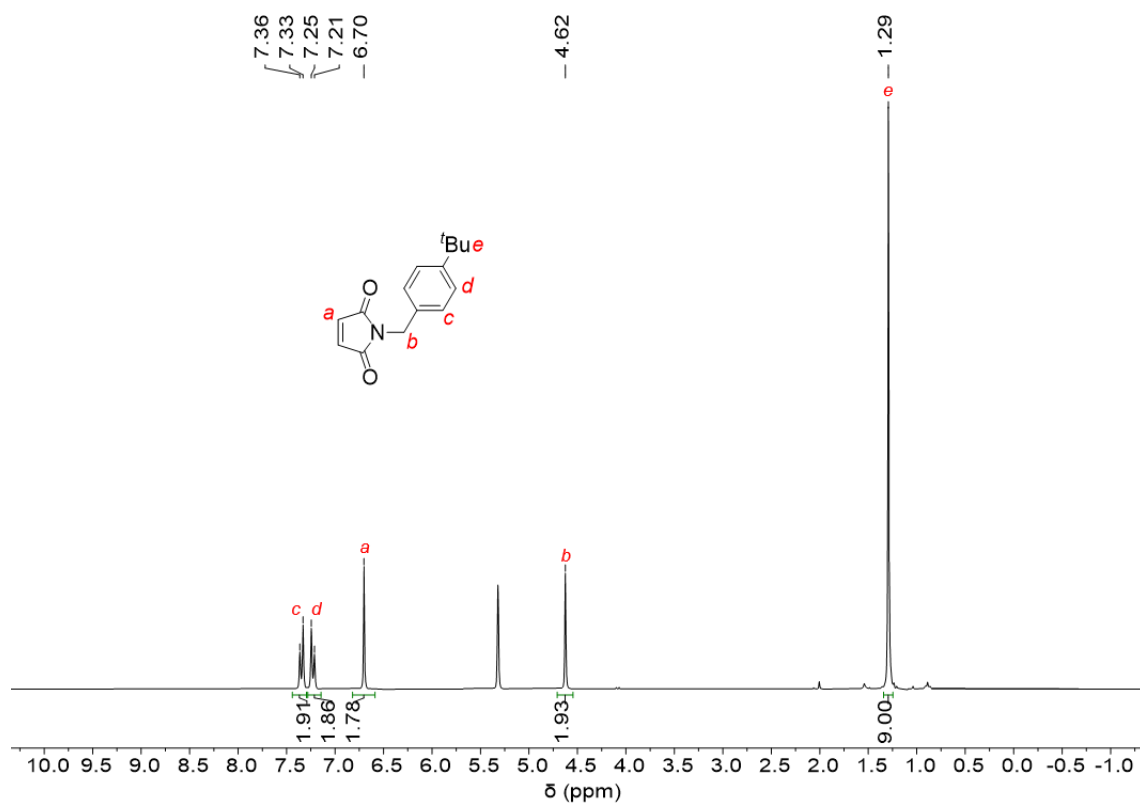




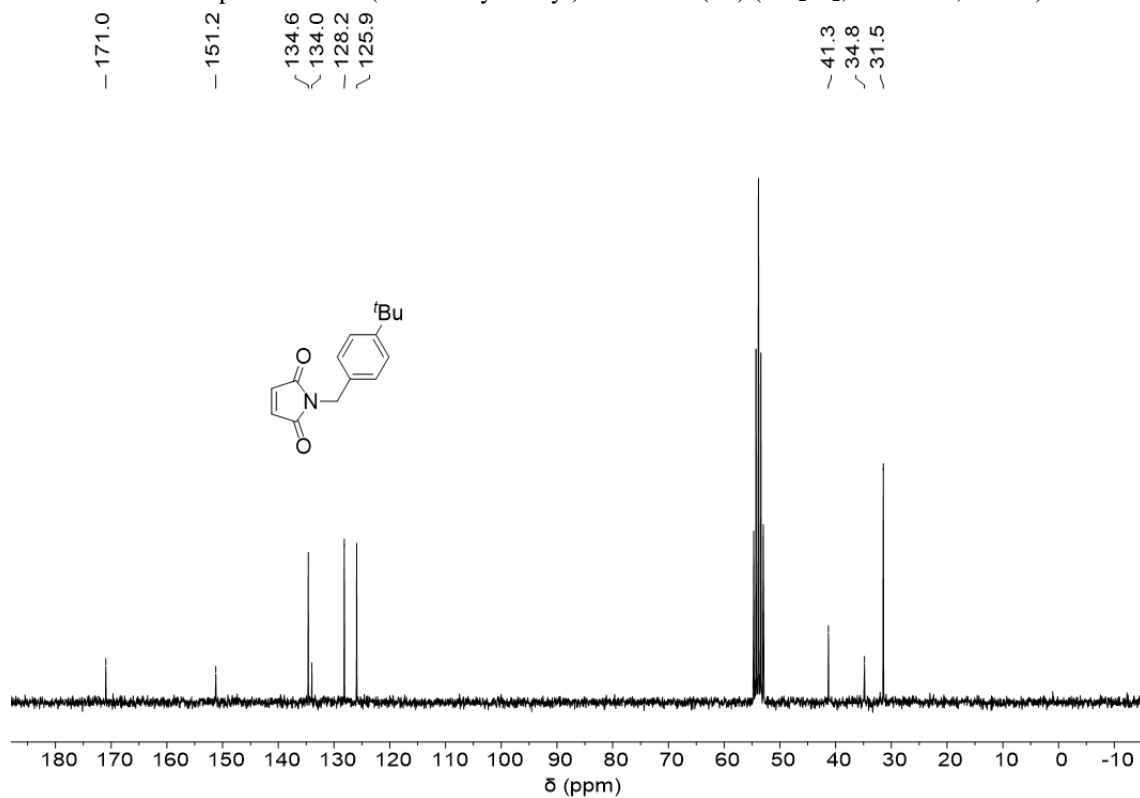
Aromatic region of ^1H , ^1H -NOE spectrum of di-adduct **4a** ($\text{C}_2\text{D}_2\text{Cl}_4$, 500 MHz, 413 K).



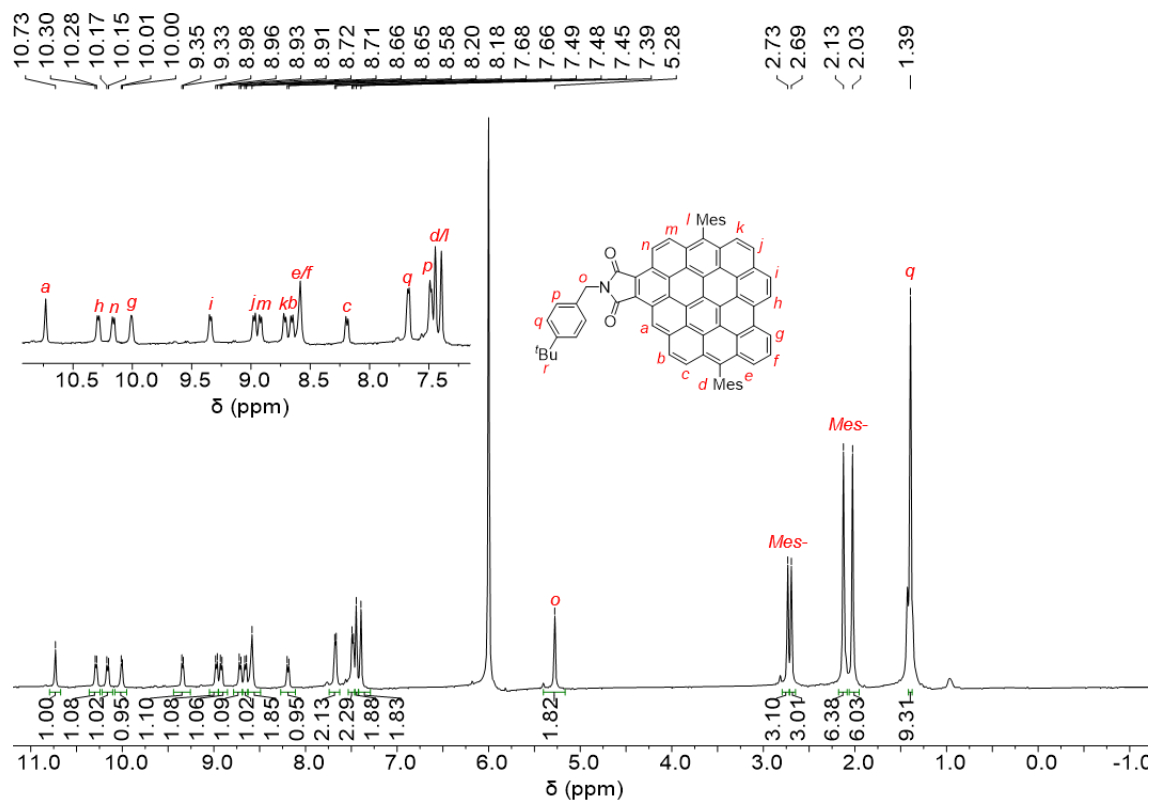
^1H , ^{13}C -HSQC spectrum of di-adduct **4a** ($\text{C}_2\text{D}_2\text{Cl}_4$, 500 MHz, 413 K).



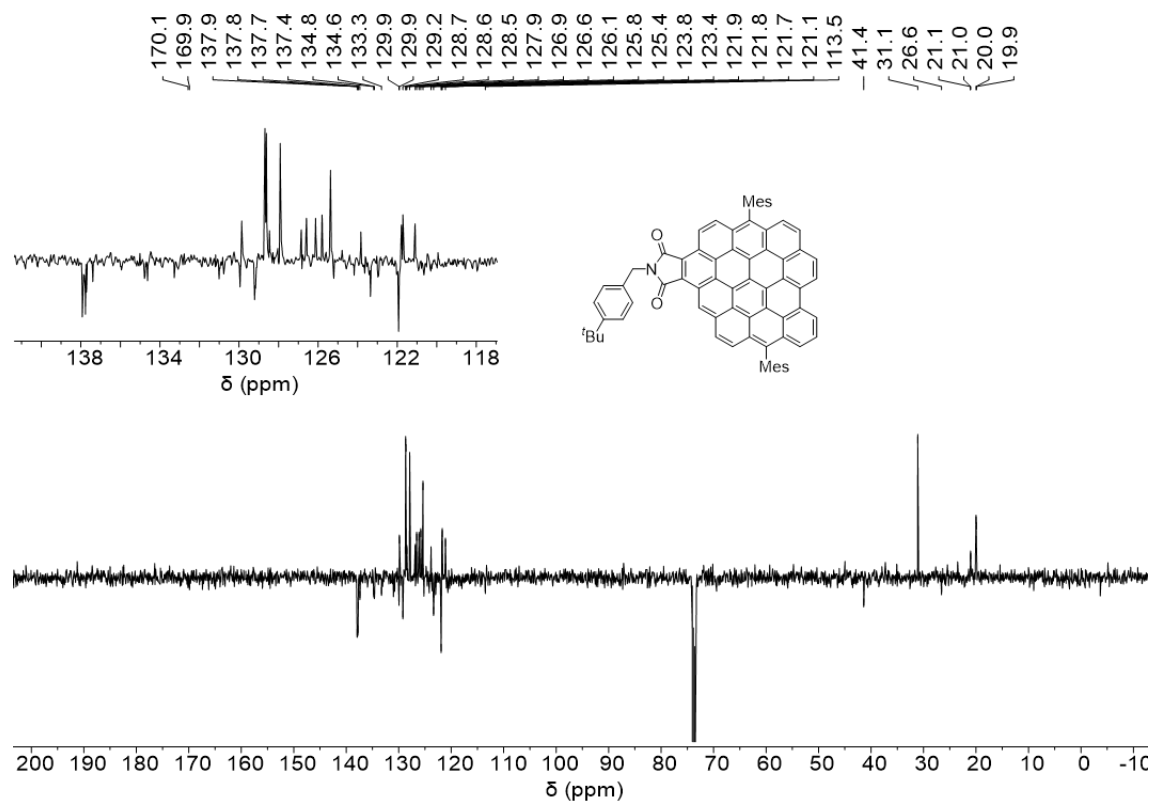
¹H NMR spectrum of *N*-(4-*tert*-butylbenzyl)maleimide (**2b**) (CD₂Cl₂, 250 MHz, 298 K).



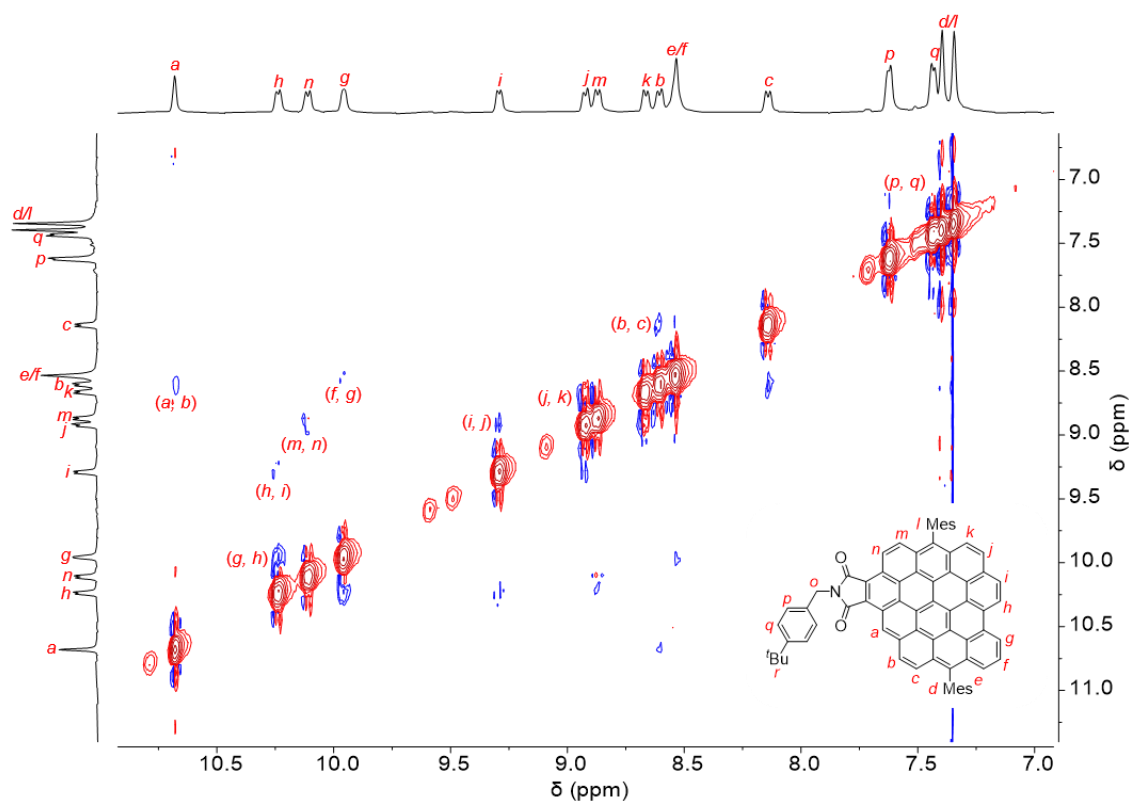
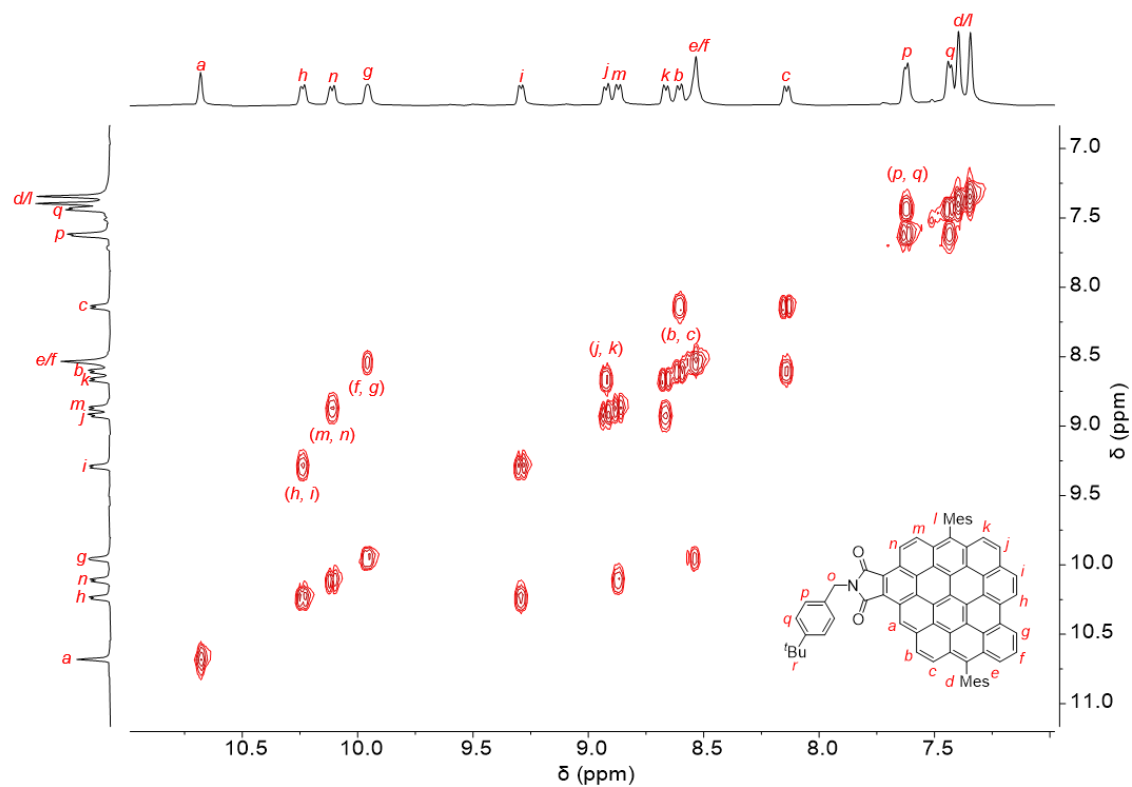
¹³C NMR spectrum of *N*-(4-*tert*-butylbenzyl)maleimide (**2b**) (CD₂Cl₂, 63 MHz, 298 K).

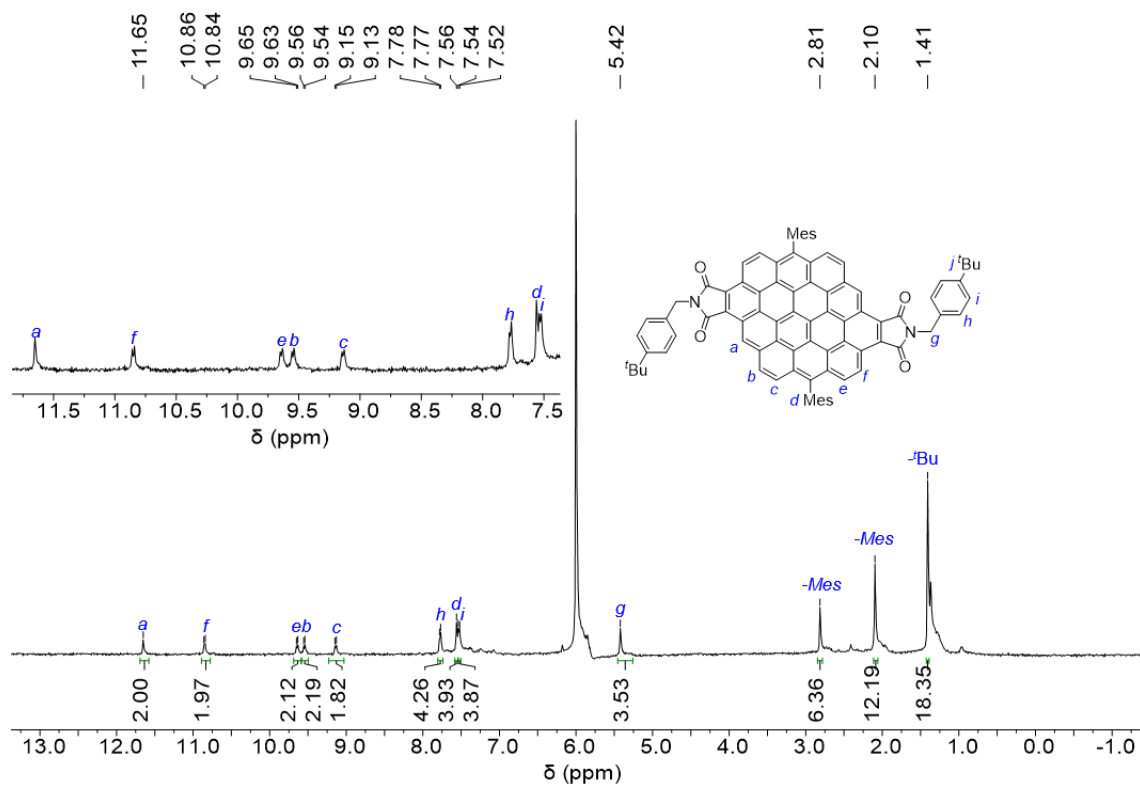


¹H NMR spectrum of mono-adduct **3b** (C₂D₂Cl₄, 500 MHz, 413 K).

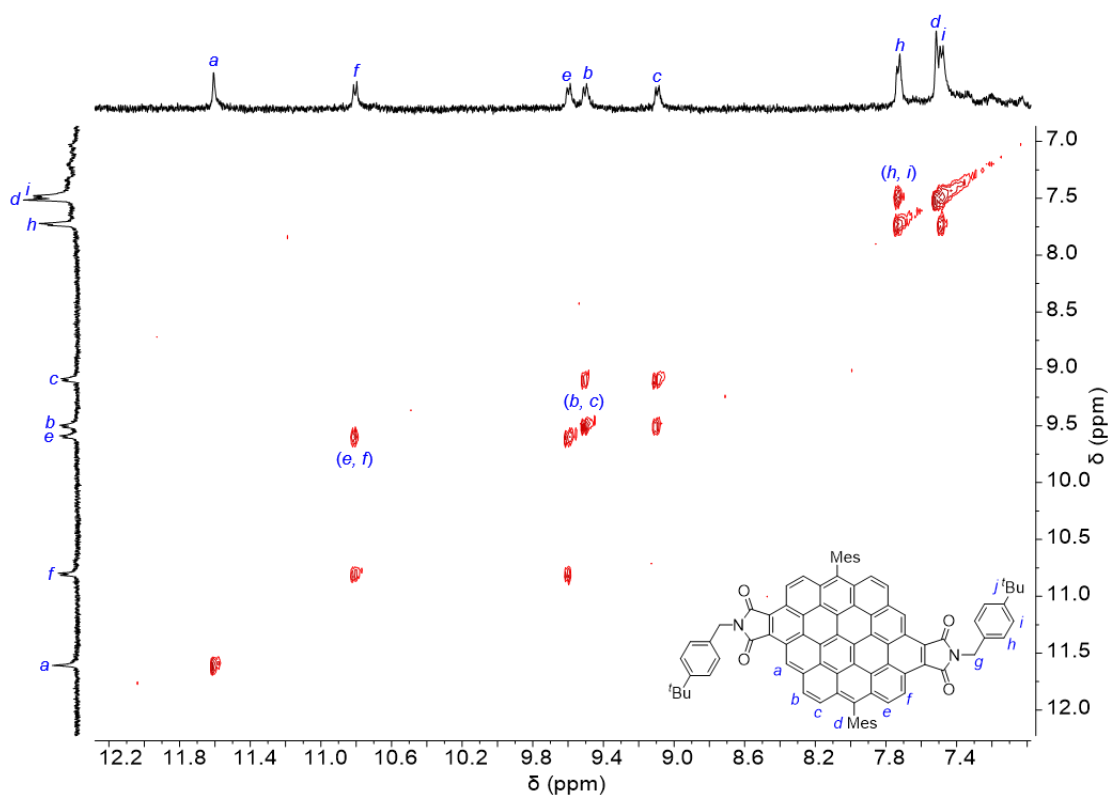


APT ¹³C NMR of mono-adduct **3b** (C₂D₂Cl₄, 125 MHz, 413 K).

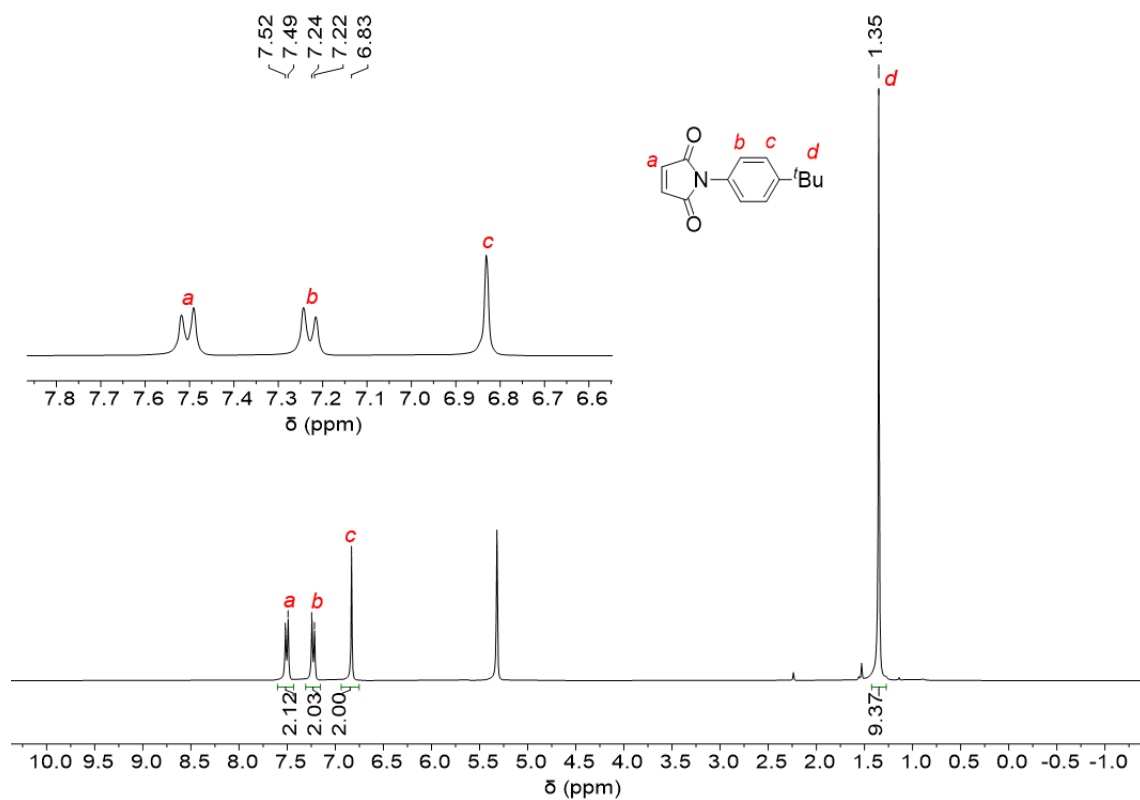




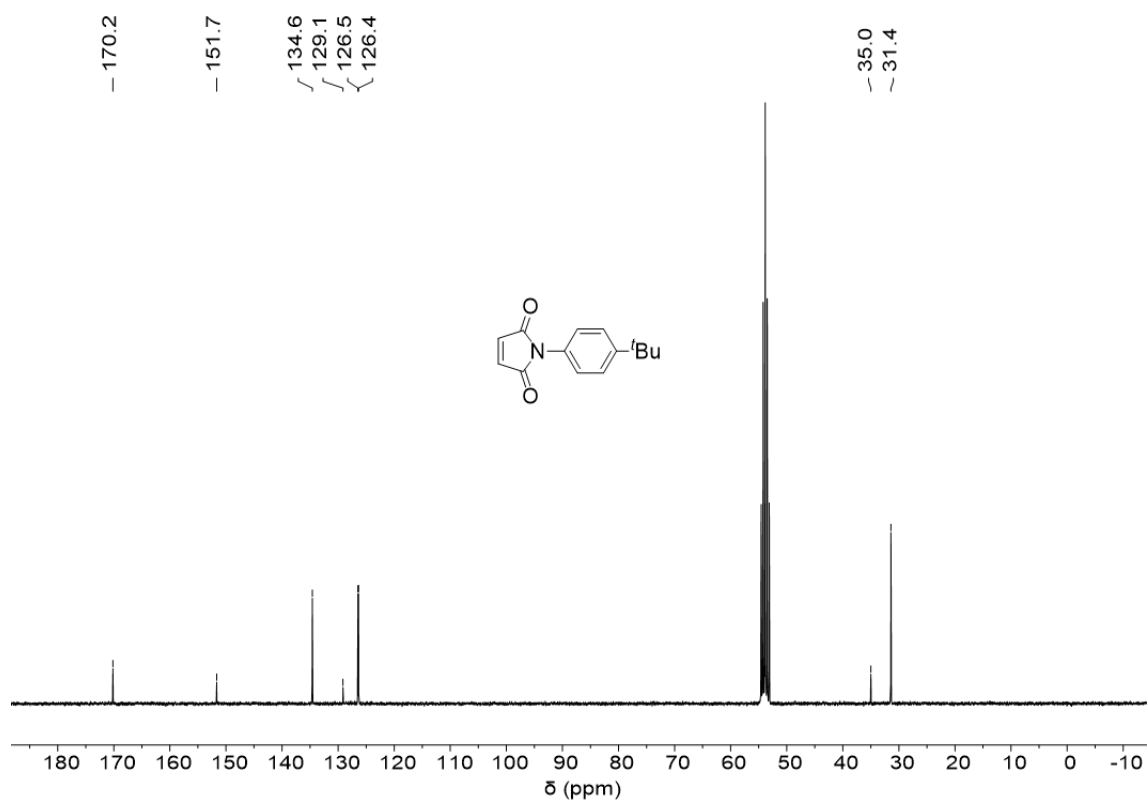
¹H NMR spectrum of di-adduct **4b** (C₂D₂Cl₄, 500 MHz, 413 K).



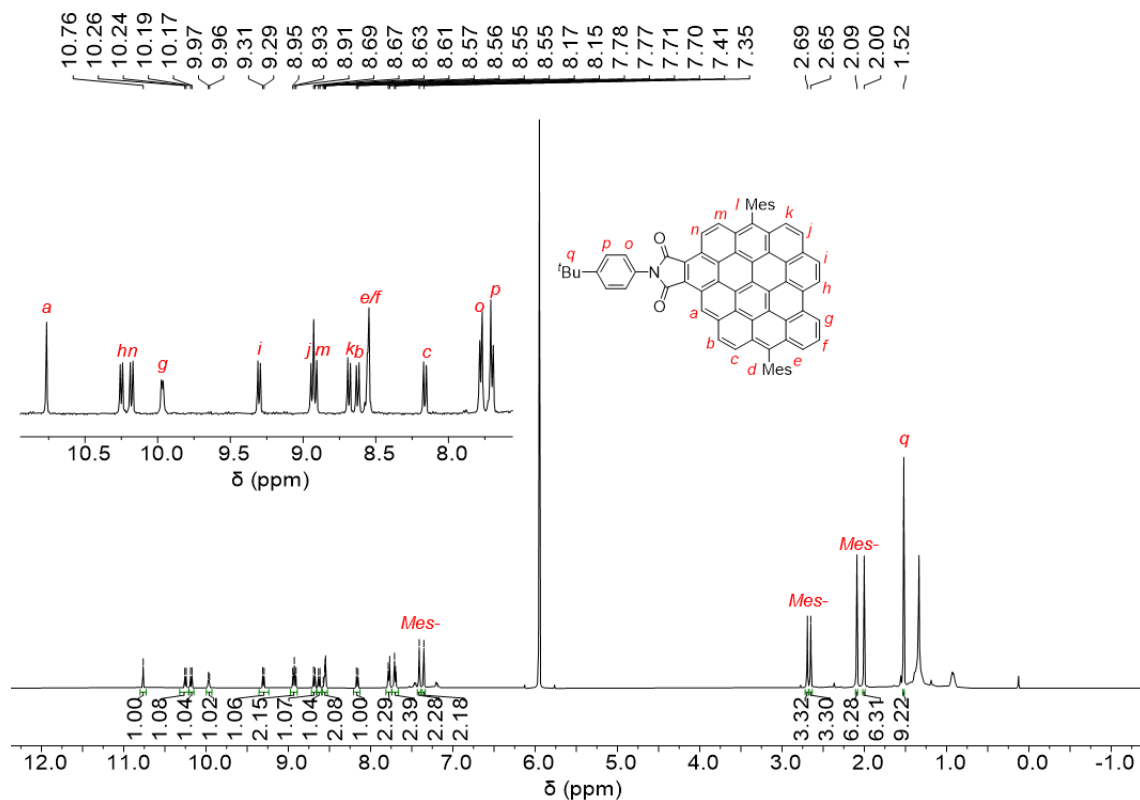
Aromatic region of ¹H, ¹H-COSY spectrum of di-adduct **4b** (C₂D₂Cl₄, 500 MHz, 413 K).



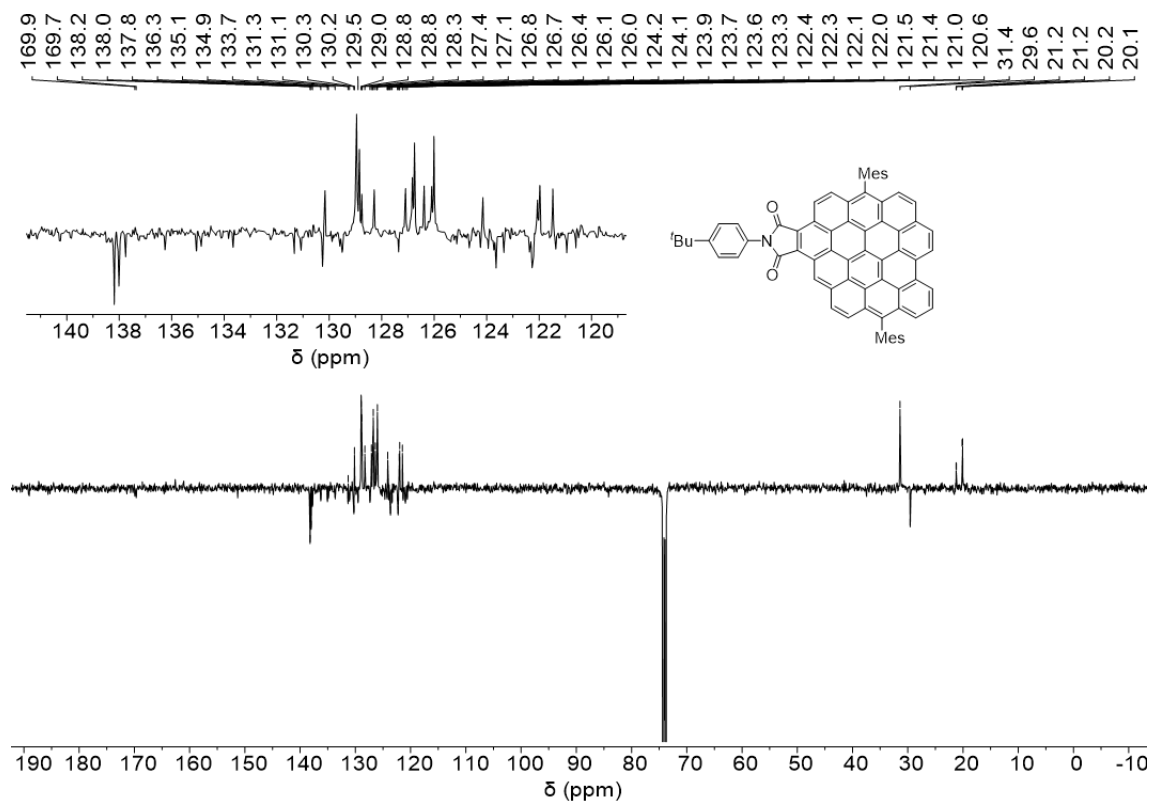
¹H NMR spectrum of *N*-(4-*tert*-butylphenyl)maleimide (**2c**) (CD₂Cl₂, 300 MHz, 298 K).



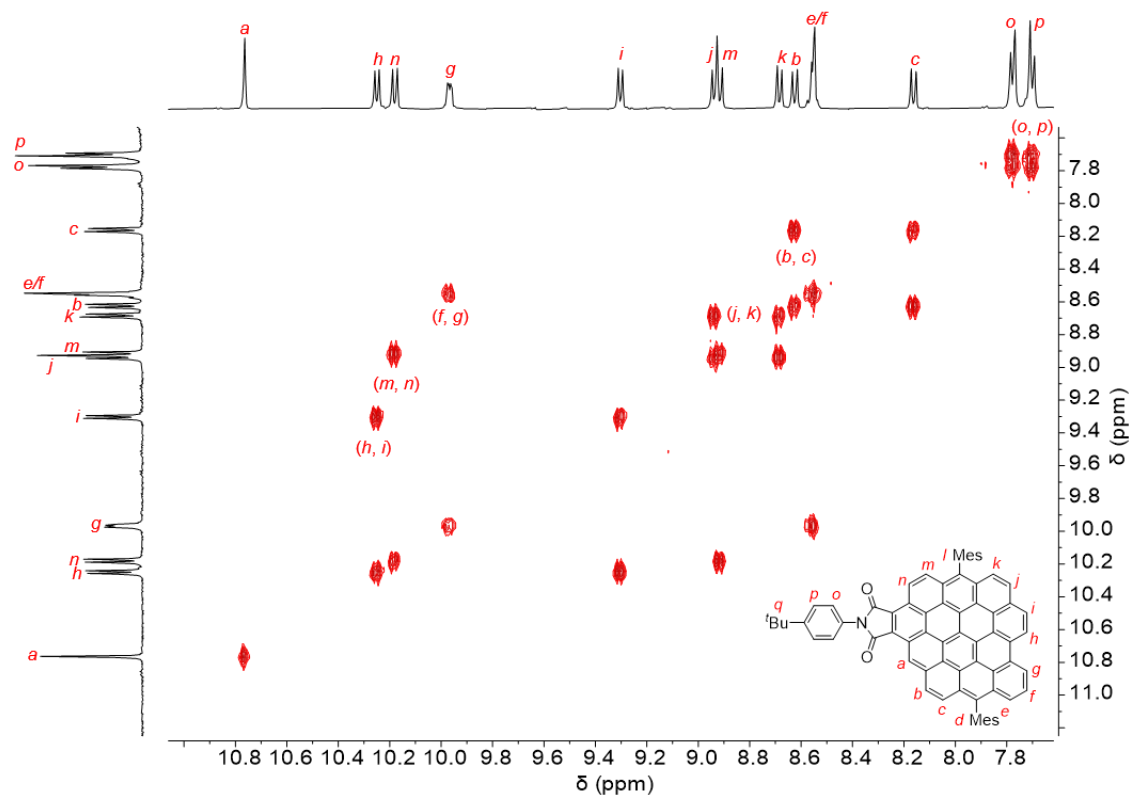
¹³C NMR spectrum of *N*-(4-*tert*-butylphenyl)maleimide (**2c**) (CD₂Cl₂, 75 MHz, 298 K).



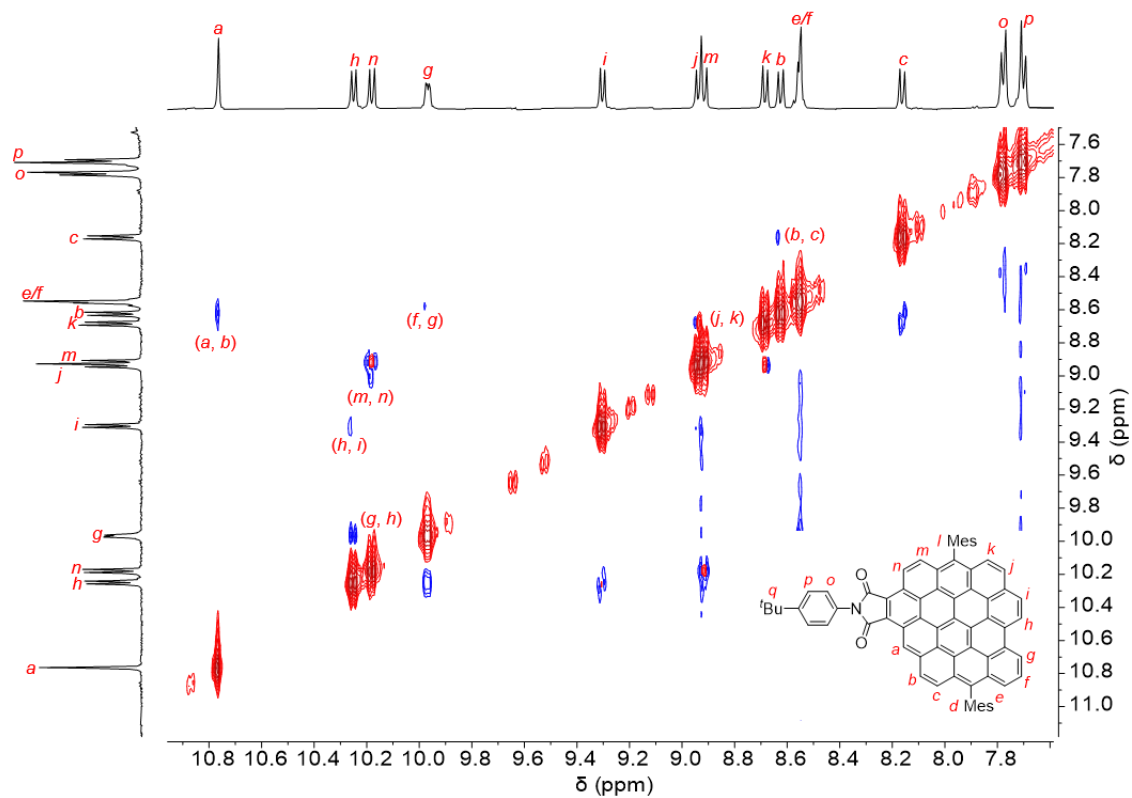
¹H NMR spectrum of mono-adduct **3c** (C₂D₂Cl₄, 500 MHz, 413 K).



APT ¹³C NMR of mono-adduct **3c** (C₂D₂Cl₄, 125 MHz, 413 K).



Aromatic region of ^1H , ^1H -COSY spectrum of mono-adduct **3c** ($\text{C}_2\text{D}_2\text{Cl}_4$, 500 MHz, 413 K).



Aromatic region of ^1H , ^1H -NOE spectrum of mono-adduct **3c** ($\text{C}_2\text{D}_2\text{Cl}_4$, 500 MHz, 413 K).