

Additional file 2

Figure S1_{a,b,c} Data management flowchart for the Danish, English, and Swedish fracture cohort

Figure S1_a Denmark

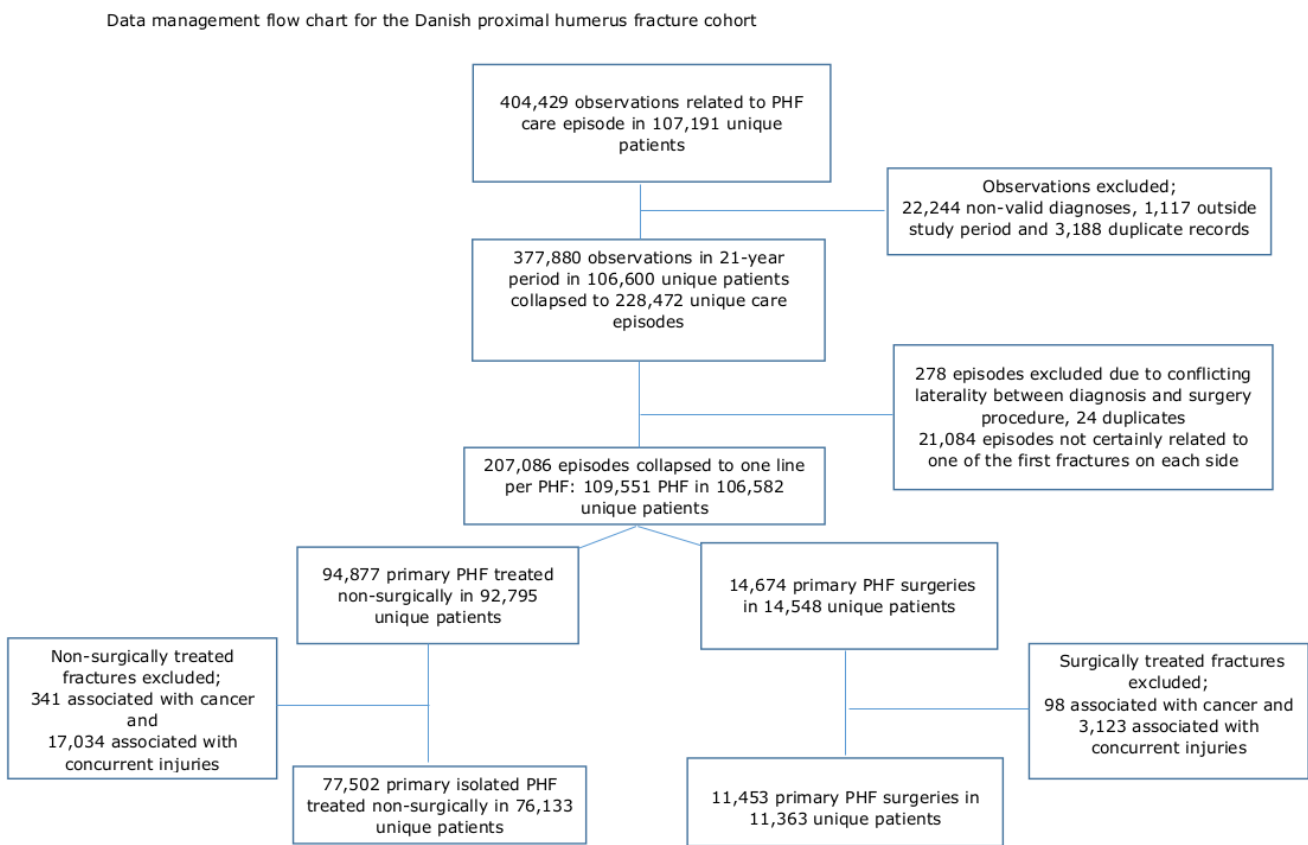


Figure S1b England

Data management flow chart for the English surgically treated proximal humerus fracture cohort

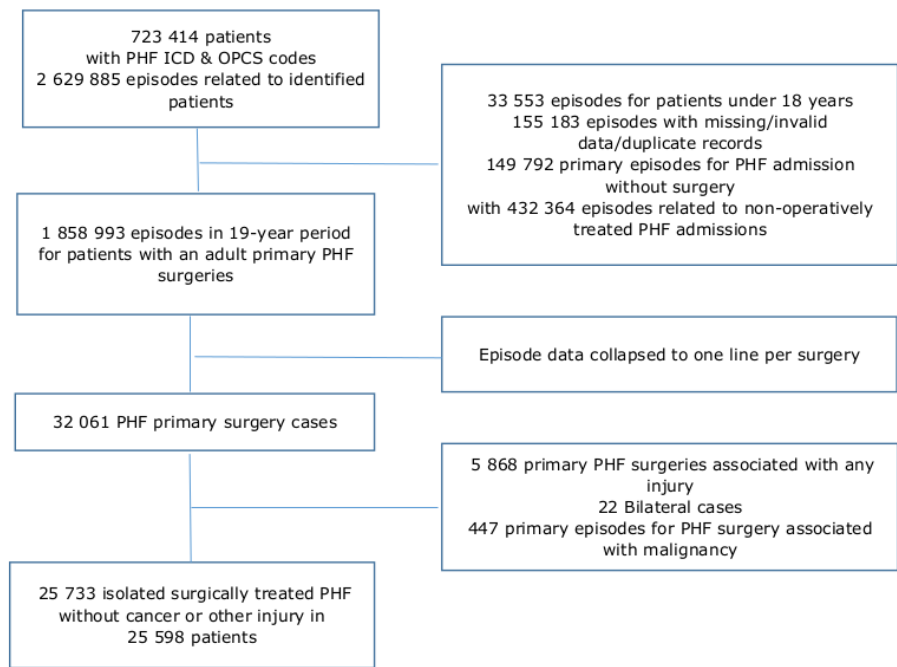


Figure S1c Sweden

Data management flow chart for the Swedish proximal humerus fracture cohort

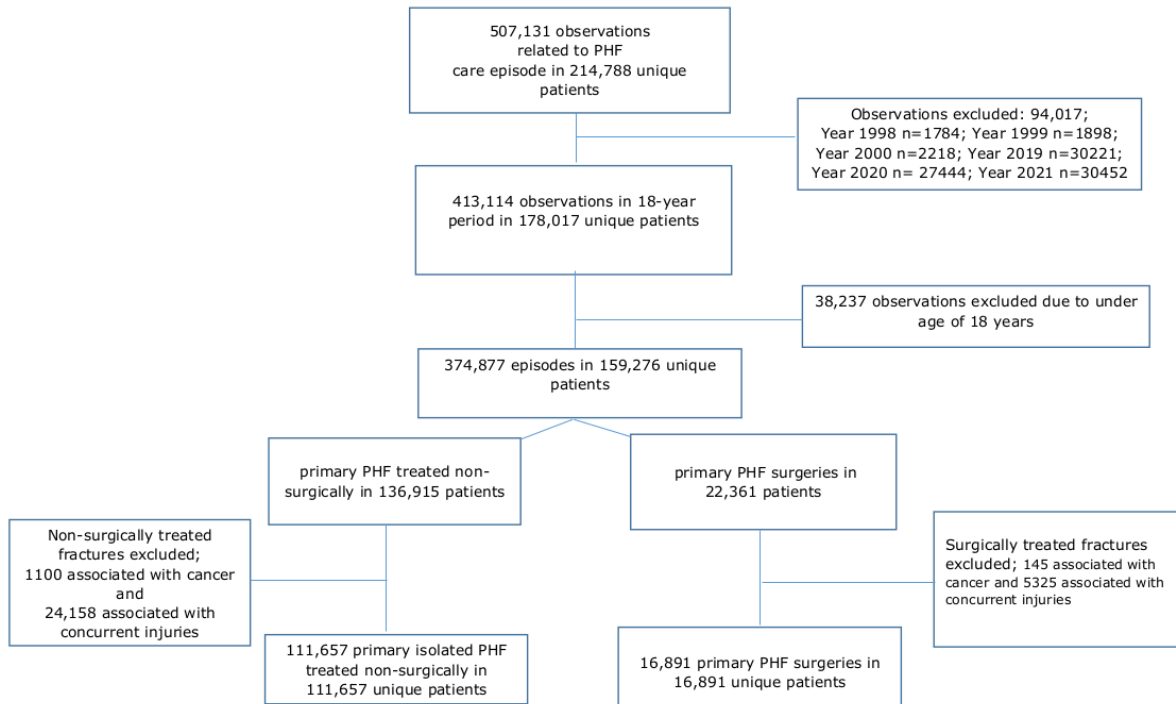


Figure S2_{a,b,c} Age- and sex-specific incidence rates of surgically treated isolated proximal humerus fracture

Figure S2_a - Denmark

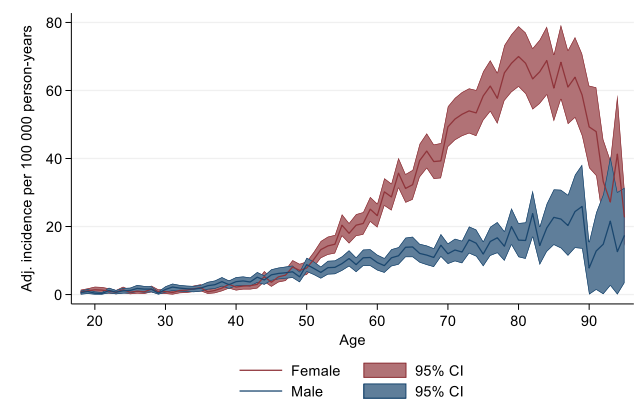


Figure S2_b - England

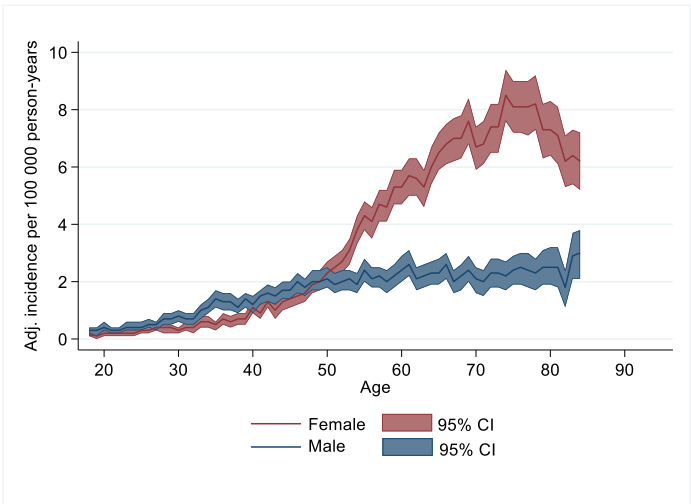
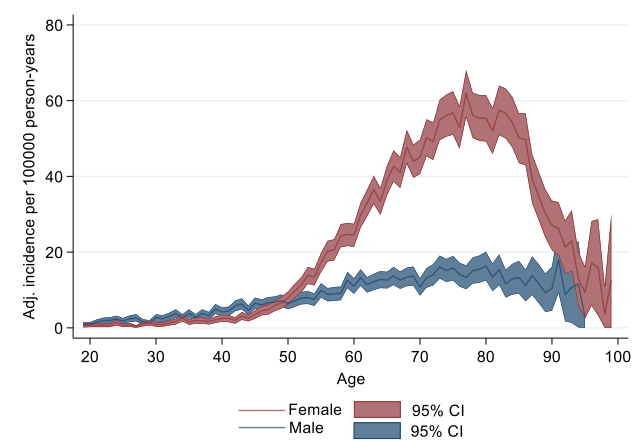


Figure S2_c - Sweden



Note: 95% CI = 95% confidence interval

Figure S3_{a,b,c} Survival rate within the first post-operative year after isolated proximal humerus fracture, divided by sex

Figure S3_a - Denmark

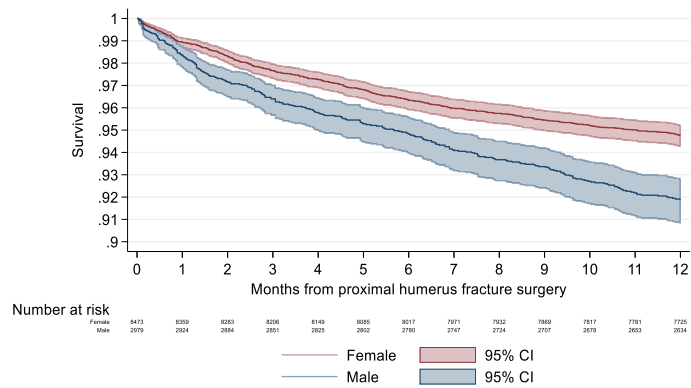


Figure S3_b - England

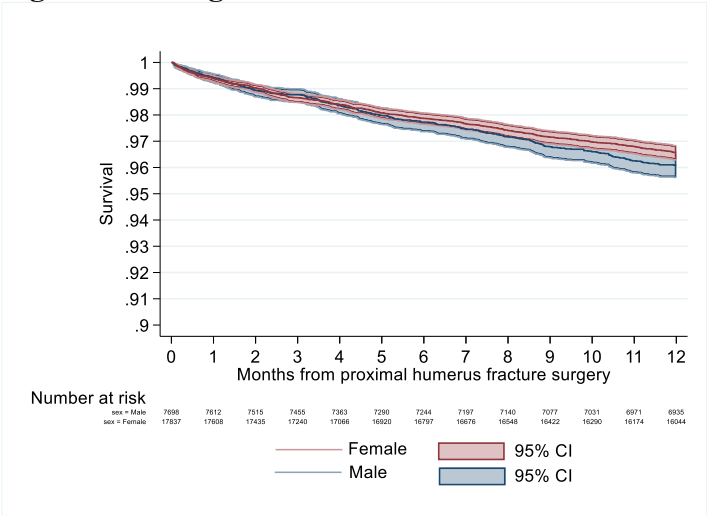
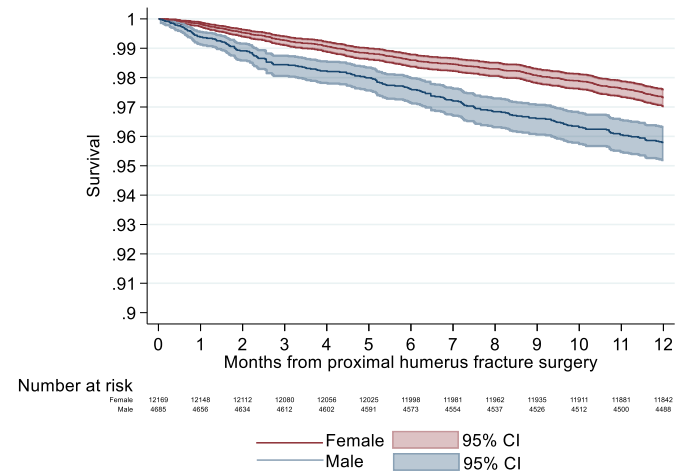


Figure S3_c - Sweden



Note: 95% CI = 95% confidence interval

Figure S4_{a,b,c} Survival rate during the total follow-up period after isolated proximal humerus fracture surgery, divided by sex

Figure S4_a – Denmark

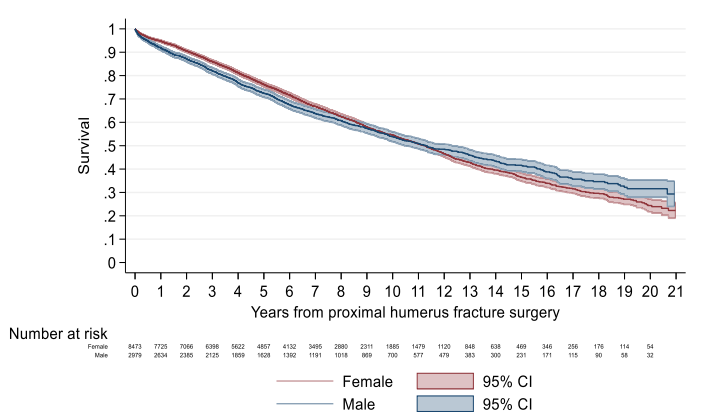


Figure S4_b – England

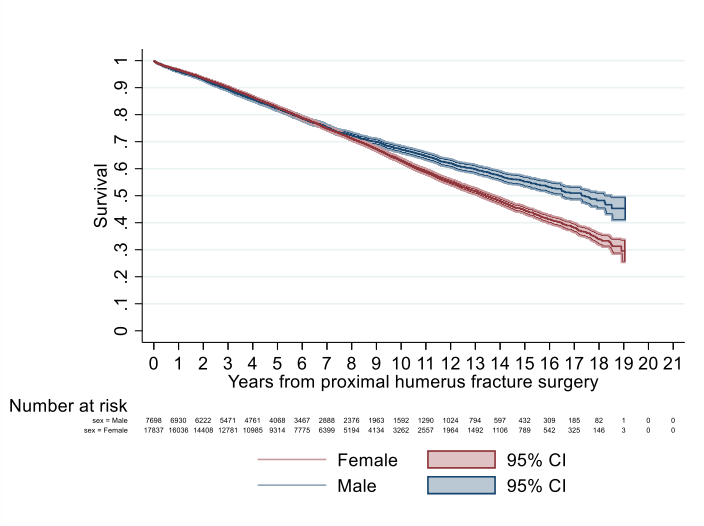
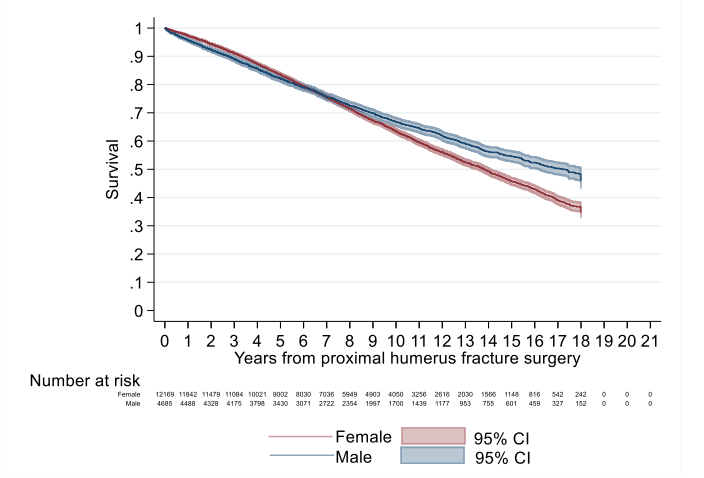


Figure S4_c – Sweden



Note: 95% CI = 95% confidence interval