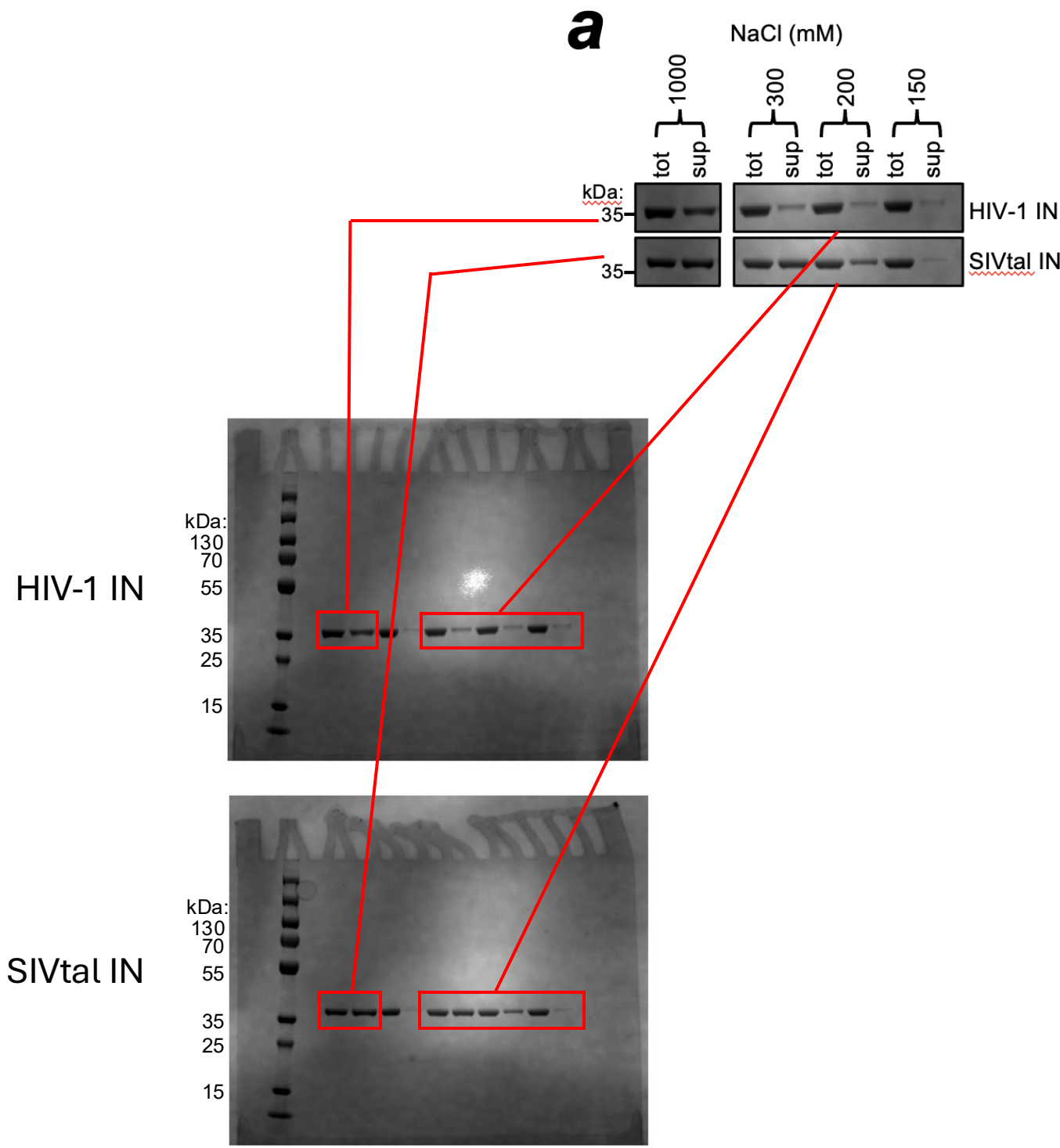

Supplementary information

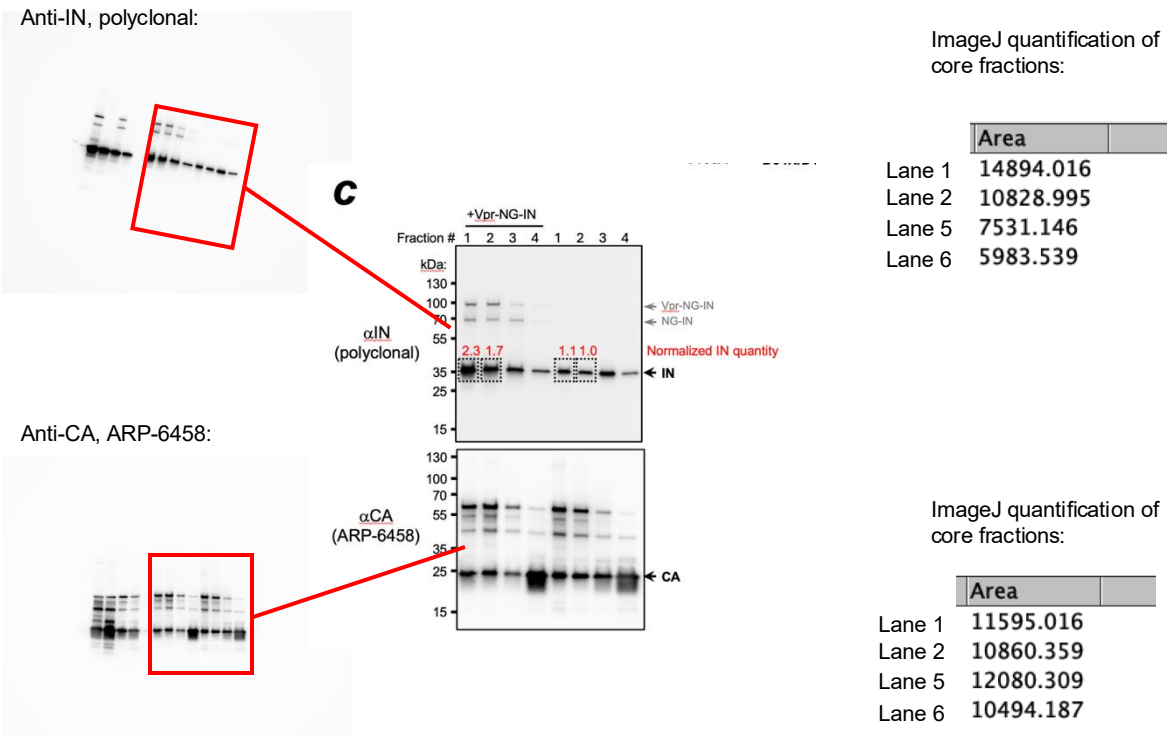
Integrase anchors viral RNA to the HIV-1 capsid interior

In the format provided by the
authors and unedited

Uncropped gels from Extended Fig. 2a.

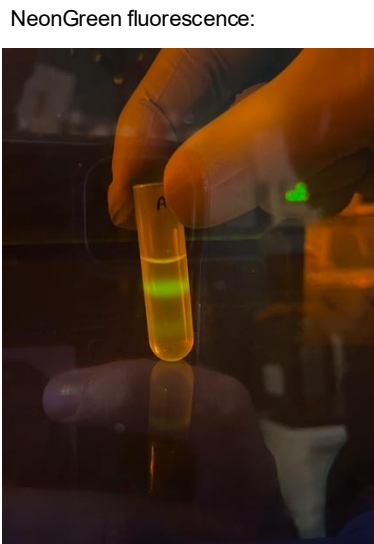


Uncropped blots and color image from Extended Fig. 4c.



Quantification using ImageJ:

	IN sinal	CA signal	ratio (IN/CA)	relative ratio
lane1	14894	11595	1.28	2.25
lane2	10829	10860	1.00	1.75
lane5	7531	12080	0.62	1.09
lane6	5984	10494	0.57	1.00



Uncropped blots from Extended Fig. 7d.

