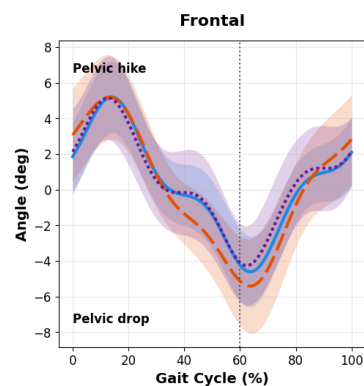
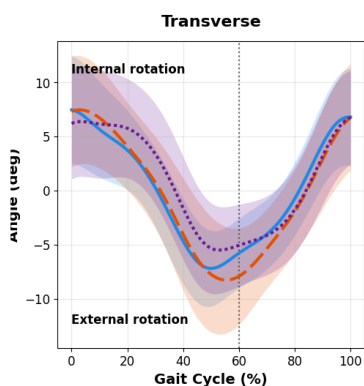
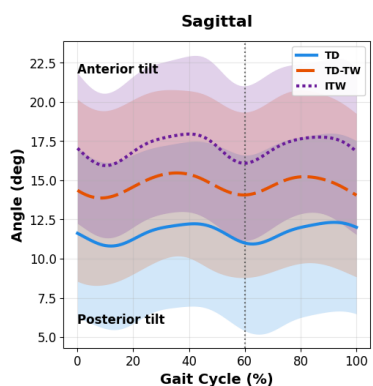


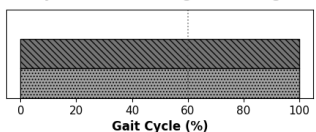
## Appendix

Supplementary kinematic analyses for all lower limb and foot joint angles are provided. For each angle, four plots are presented: (1) group mean curves ( $\pm 1$  SD) for TD-N, TD-TW, and ITW; (2) unadjusted SPM $\{t\}$  significant regions for ITW vs TD-TW, ITW vs TD-N, and TD-TW vs TD-N comparisons; (3)  $\beta(t)$  curves showing age and normalized speed covariate effects; and (4) adjusted SPM $\{t\}$  significant regions after accounting for age and walking speed.

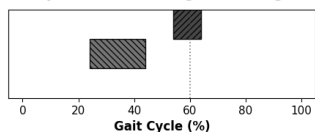
## PelvisAngles



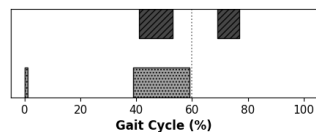
Unadjusted SPM{t} - Significant Regions



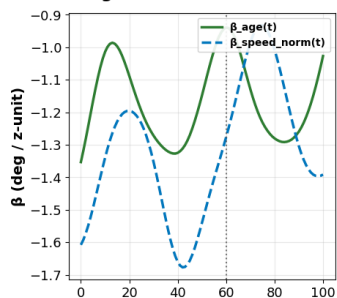
Unadjusted SPM{t} - Significant Regions



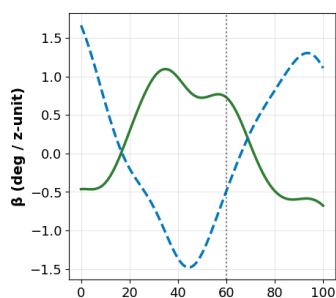
Unadjusted SPM{t} - Significant Regions



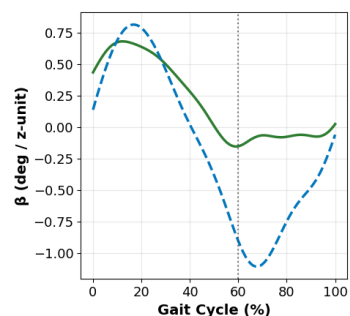
Sagittal - covariate effects



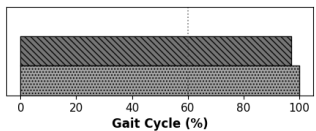
Transverse - covariate effects



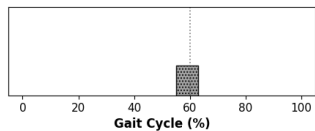
Frontal - covariate effects



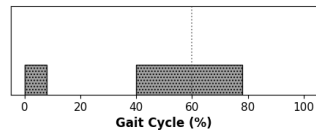
Adjusted SPM{t} - Significant Regions



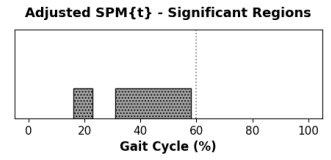
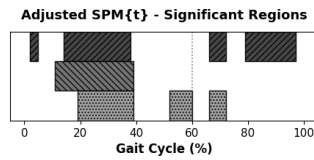
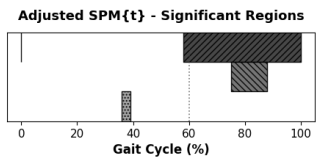
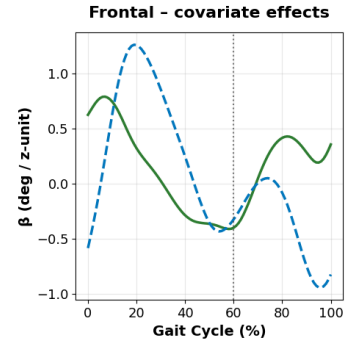
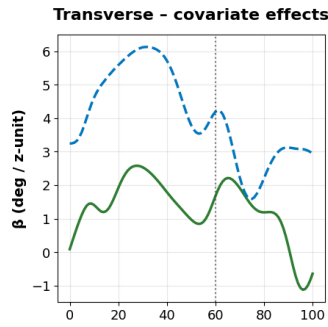
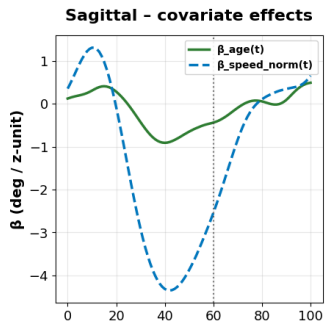
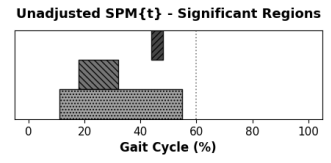
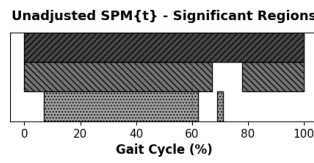
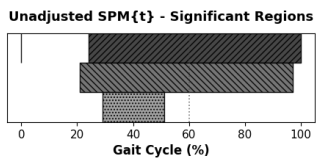
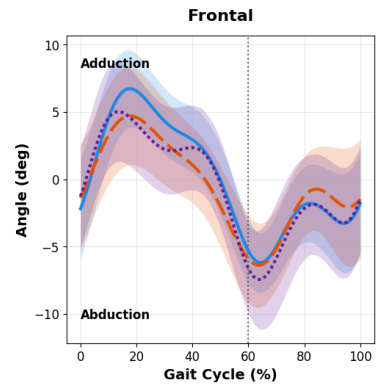
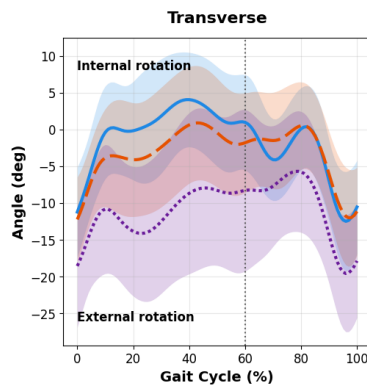
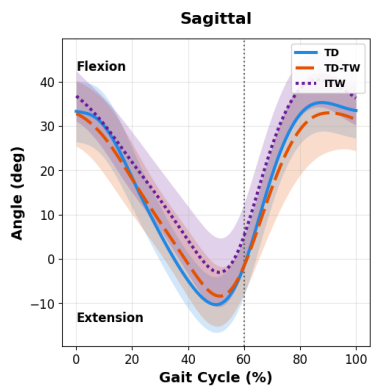
Adjusted SPM{t} - Significant Regions



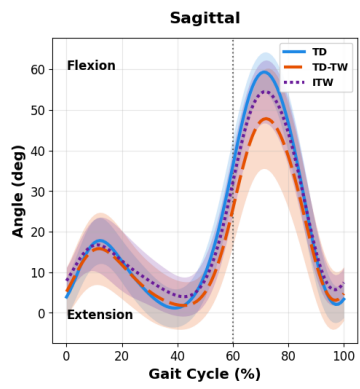
Adjusted SPM{t} - Significant Regions



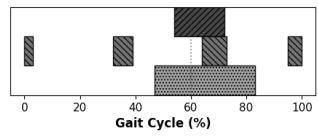
## HipAngles



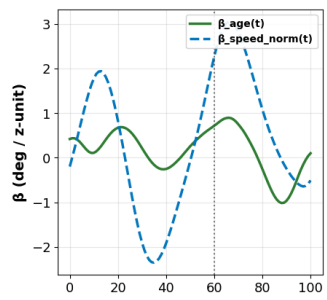
## KneeAngles



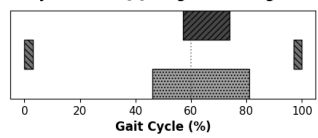
### Unadjusted SPM{t} - Significant Regions



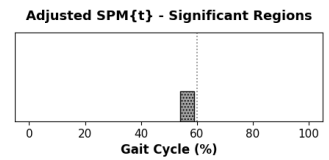
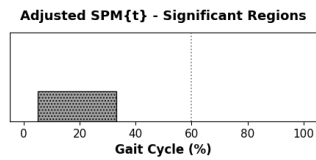
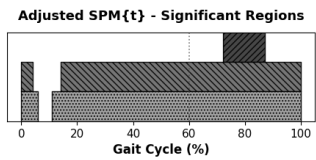
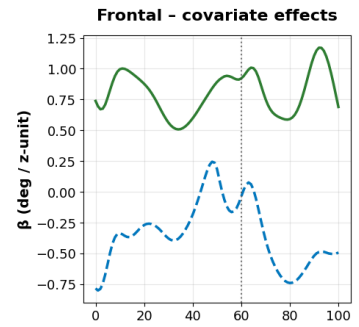
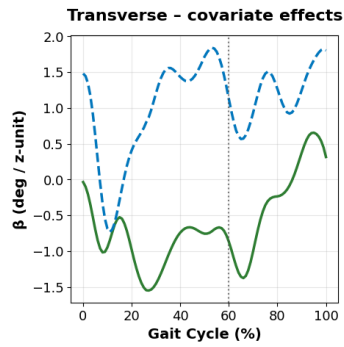
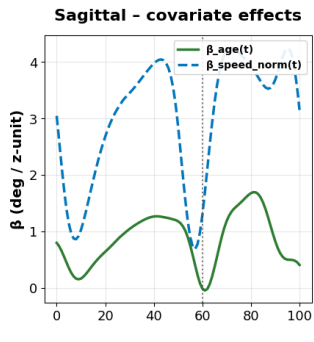
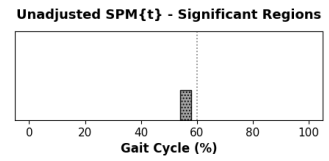
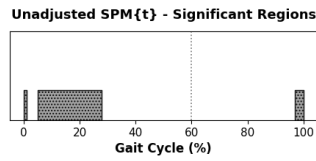
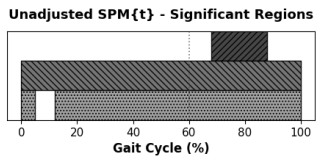
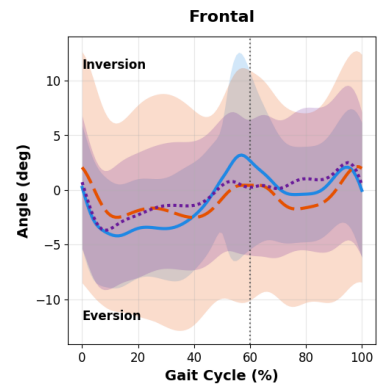
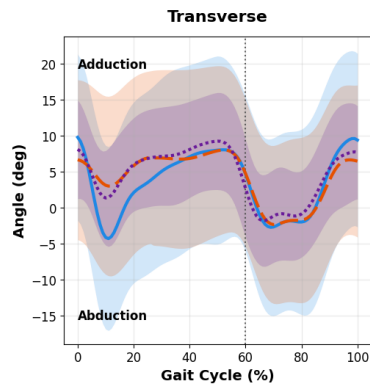
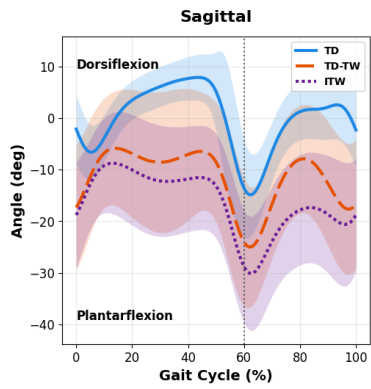
### Sagittal - covariate effects



### Adjusted SPM{t} - Significant Regions



# HFTBA



## FFHFA

