



Unknown provenance. La "Granata Svampante," stemma di Alfonso I d'Este, e della rione San Spirito (c. 1505) Image via <https://www.rionesantospirito.it/chi-siamo/>.
emailed

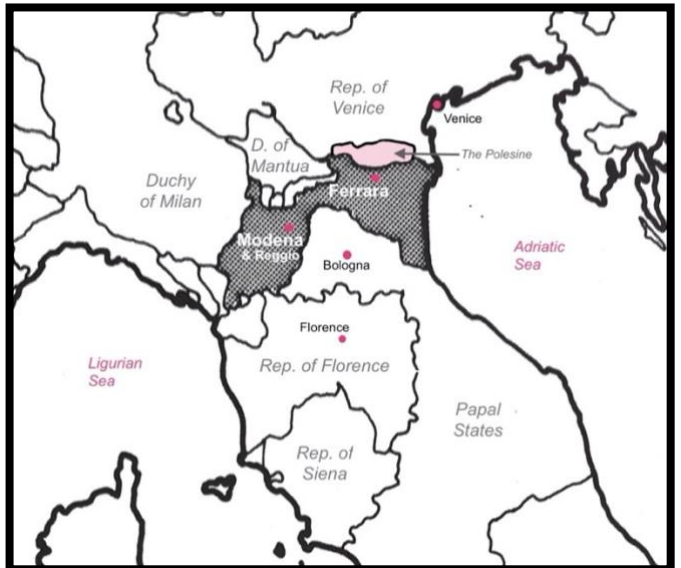


Figure 2: Northern Italy, c.1505. Base map from Marco Cattini and Mario Romani, "Le corti parallele: per una tipologia delle Padane dal XIII al XVI secolo," in *La corte e lo spazio*, Ferrara Estense, eds. Giuseppe Pagano, Amedeo Quondam (Rome, 1982) p. 41.



Figure 1: Battista Dossi (att.), Alfonso I d'Este (c.1531-6) oil on canvas. Galleria Estense, Modena, inv. 450. PAID - CC-BY-NC-SA Wikimedia commons



Figure 4: copy after Titian, Alfonso I d'Este (c.1529-30) oil on canvas. Metropolitan Museum, New York, acc. 27.56

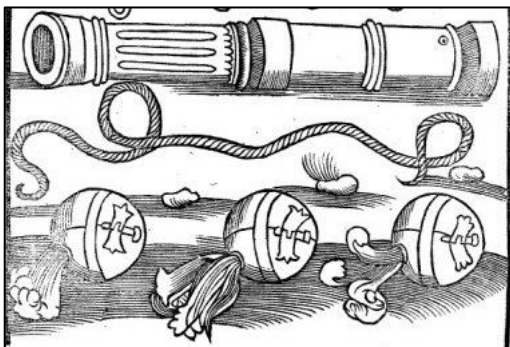


Figure 3: unknown artist, detail from Flavius Vegetius Renatus, *De re militari* (Basil, Christian Wechel, 1532) p.128. [source gallica.bnf.fr](http://source.gallica.bnf.fr) / National Library of France

Public Domain – Image courtesy



Figure 5: Matteo da Milano, Estense Arms (c.1509) illustrated manuscript. *Offiziolo Alfonsino*, 15r. (Photo courtesy Museu Calouste Gulbenkian, Lisbon, and Strossmayerova Galerija, Zagreb, CD-ROM reproduction, 2004)



Figure 6: unknown artist, "Granata Svampante," in *Paulo Giovio, Dialogo dell'imprese militari et amorose* (Lyon, Guglielmo Rouillio, 1574) p. 80. *Lyon 1574 p. 81 source gallica.bnf.fr / Bibliothèque Nationale de France*



Figure 7: Ferrarese school, plate (c.1491) slipware. British Museum, London, inv. 1855, 1201.70 (Photo courtesy the British Museum)



Figure 8: Mantuan school, Ferrarese medallion (c.1502) cast copper. Palazzo dei Musei, Modena. inv. 8852 (Photo courtesy Palazzo dei Musei)



Figure 9: Pisanello, Ferrarese Medallion (c.1445) cast copper. Frick Collection, Pittsburgh, acc. 2016.2.111 (Photo courtesy the Frick Collection)

[https://commons.wikimedia.org/wiki/File:Pisanello, Two Nude Men Carrying Baskets with Olive Branches \(reverse\), c. 1443, NGA 44327.jpg](https://commons.wikimedia.org/wiki/File:Pisanello,_Two_Nude_Men_Carrying_Baskets_with_Olive_Branches_(reverse),_c._1443,_NGA_44327.jpg)

PLATE: £25, <https://www.bmimages.com/results.asp?txtkeys1=1855,1201.70>



Figure 10: Taddeo Crivelli, *Franco dei Russi, et al*, detail from *Bibbia di Borso* (1455-661), illustrated manuscript. *Biblioteca Estense ms. Lat. 422-423= V.G.12-13, 3r* (Photo courtesy World Digital Library, Library of Congress, www.wdl.org/en/item/9910/)



Figure 11: unknown, *statute of Alfonso I* (16 Feb, 1509), illustrated manuscript. *Biblioteca Ariosteana, ms. Cl. I.478, 23v* (author's photo)



Figure 12: unknown, *bolle di fratellanza di Lucrezia Borgia* (1517), illustrated manuscript. *Archivio di Stato Modena ms. ASE, Caso e Stato Docc, spett. B.5, n.40* (author's photo) *can't use*



[https://commons.wikimedia.org/wiki/File:Alfonso_I_d%27Este_\(and_Lucrezia_Borgia\),_by_unknown_Man_tuan,_designed_c._1502_-_Chazen_Museum_of_Art_-_DSC02121.JPG](https://commons.wikimedia.org/wiki/File:Alfonso_I_d%27Este_(and_Lucrezia_Borgia),_by_unknown_Man_tuan,_designed_c._1502_-_Chazen_Museum_of_Art_-_DSC02121.JPG) CC0 1.0 Creative Commons

ERCOLE's BREVIARY - <https://www.loc.gov/item/2021668197/>



Figure 13: detail of Offiziolo Alfonsino, 46r.



Figure 14: detail of Offiziolo Alfonsino, 15r



Figure 15: "arrows," detail of Offiziolo Alfonsino, 14r



Figure 16: "branches," detail of Offiziolo Alfonsino, 15r



Figure 17: detail of Offiziolo Alfonsino, 50r



Figure 18: Offiziolo Alfonsino, 13r *emailed*

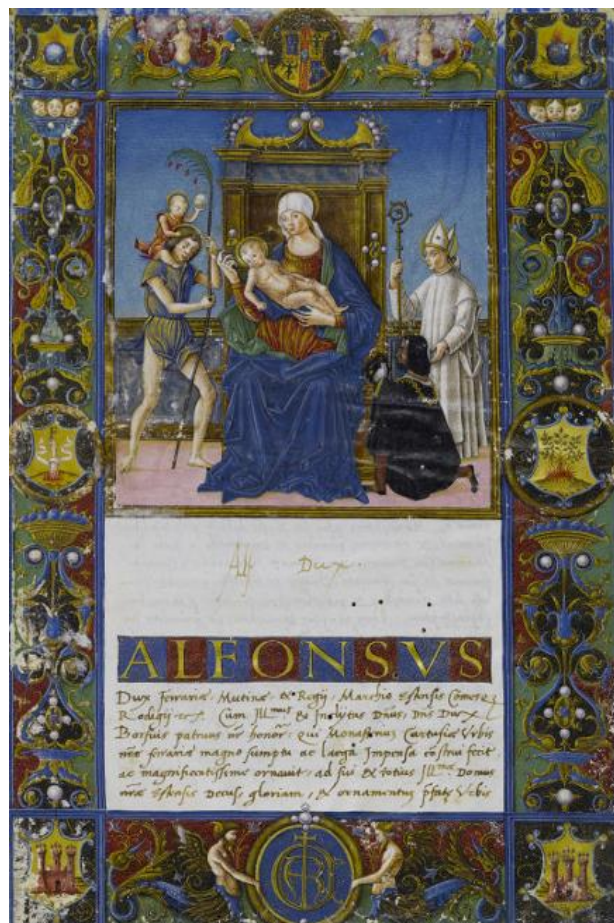


Figure 19: Matteo da Milano, Charter for the Charterhouse of Certosa (1505), illustrated manuscript. Archivio Storico Civico e Biblioteca Trivulziana, Milan, Trivulziano 1440, 1r. (image courtesy Grifche in Comune,) *emailed*
<http://graficheincomune.comune.milano.it/GraficheInComune/i>

https://commons.wikimedia.org/wiki/File:I_Libro_d%27Ore_di_Alfonso_I_d%27Este.

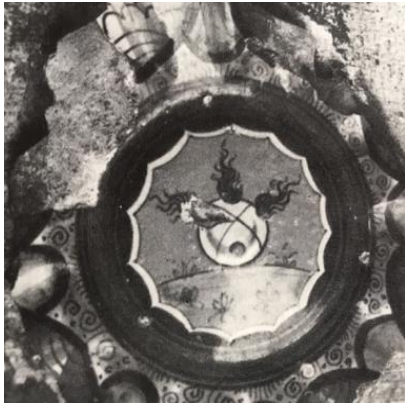


Figure 20: Faenza school, plate fragment (early 16th century) maiolica. Unknown collection. (Reproduced from Virgilio Ferrari, *L'araldica estense nello sviluppo storico del dominio ferrarese*, ed. Chiara Forlani (Ferrara, 1989), p. 122.)

-
-
-



Figure 21: unknown artisan, mirror frame (c.1502-20) wood and gilt. Victoria and Albert Museum, London, inv. 7694-1861. (Image courtesy the V&A) *emailed-OK-*

•V&A: Print based academic publications: one-time use of Content in publications with print-runs up to and including 4,000 copies, for one edition only.



Figures 23: School of Antonio Lombardo (c.1505-16) marble bas-relief. San Cristoforo alla Certosa, Ferrara. (Author's photo)



Figure 22: unknown artisan (c.1531) marble column capital. Loggia dell'arancia Castello Estense, Ferrara. (Author's photo)



Figure 24: School of Antonio Lombardo (c.1505-16) marble bas-relief. San Cristoforo alla Certosa, Ferrara. (Author's photos)



(Author's photo)

Figure 27: unknown artisan, details of plasterwork (c. early-16th century), Villa Vincenzi Pasi, Ospital Monocale. (Reproduced from Francesco Pertegato and Daniele Alberti, 'Scoperta la "granata svampante" di Alfonso I in una residenza estense finora ignorata', *Kermes*, 89 (March 2013) pp. 47-8) [emailed](#)

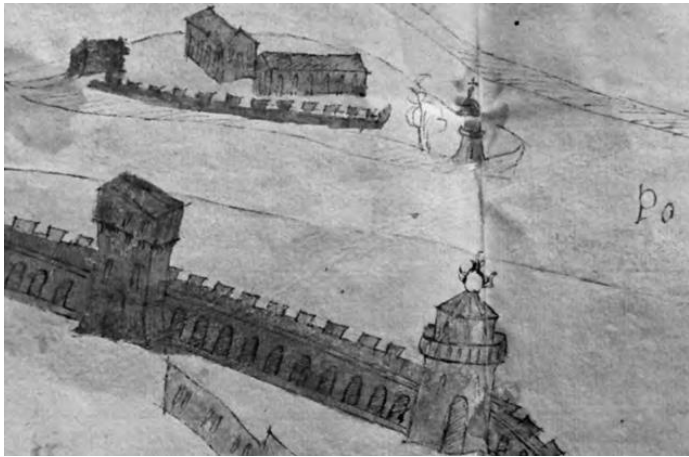
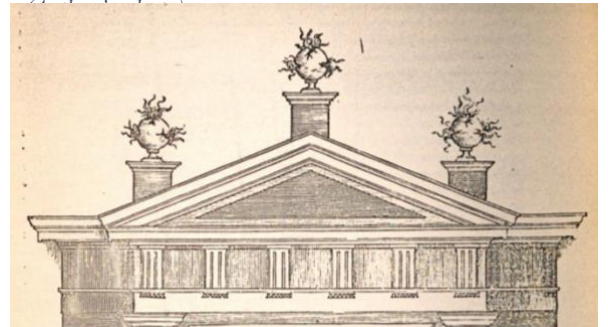


Figure 28: Cochapano della San Martina, detail of Torione dritto Belvedere (in rear) (c. early 16th century) pen and ink. Archivio di Stato, Modena, AFdO, 278.2546. (Reproduced from Andrea Marchesi, *Delizie d'archivio: registri e documenti per la storia delle residenze estensi nella Ferrara del Cinquecento*, v.2 (Ferrara, 2015) p. 253). [can't use](#)



Figure 26: Gabriele Frisoni (c. post-1500) marble column capital. Palazzo Rondinelli, Ferrara.



Figures 29 & 30: Pieter Coecke van Aelst details of architectural drawings, from Sebastiano Serlio *Regoli Generali* (Paris, 1545) XXX, LXI [Gallica pg. 54 \(top\) 119 \(bottom\)](#)
<https://gallica.bnf.fr/ark:/12148/btv1b8457382h/f54.item>

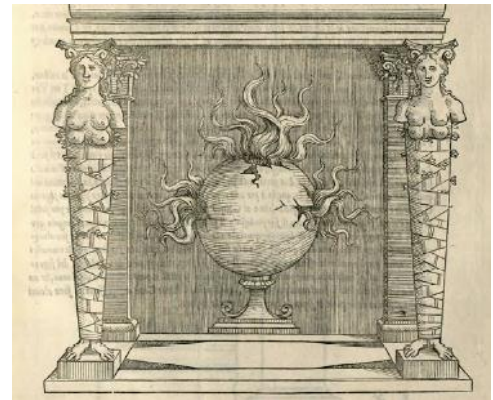




Figure 32: unknown artist, emblem of Garfagnana regional union. (Image from <http://www.uegarfagnana.lu.it>)



Figure 33: unknown artist, emblem of Rione Santo Spirito, Ferrara. (Image from <http://www.rionesantospirito.it>)



Figure 34: unknown artist, emblem of the Carabinieri, Italy. (Image from <http://www.carabinieri.it>)



Figure 35: Antonio Lombardo, Mars Divesting the Armour of War, (c.1512) marble relief. Galleria Estense, Modena, inv. 2054. PAID



Figure 31: unknown artist, grosseto coin (1606) copper minted. Castello di Udine, inv. 1501 Colloredo. (Image courtesy lamoneta.it – TBC)

https://commons.wikimedia.org/wiki/File:Antonio_lombardo,_marte_a_riposo,_1510-15_ca._01.jpg



Figure 36: Antonio Lombardo, Forge of Vulcan (c.1508-11) marble relief. The Hermitage, St. Petersburg, H.CK-1771. emailed



Figure 37: Giannantonio da Foligno, Plaque for Reliquary of San Maurelius (c.1513) engraved silver plaque. Musei Civici di Arte Antica, Ferrara.



[https://commons.wikimedia.org/wiki/File:Alfonso d%27este and st. maurelio.jpg](https://commons.wikimedia.org/wiki/File:Alfonso_d%27este_and_st._maurelio.jpg)



[https://commons.wikimedia.org/wiki/File:Ferrara,_Castello_Estense_\(57\).jpg](https://commons.wikimedia.org/wiki/File:Ferrara,_Castello_Estense_(57).jpg)
Emailed for permission, Creative Commons -Share alike 4.0

Table of Illustrations

- Figure 1:* Battista Dossi (att.) *Alfonso I d'Este* (c.1531-36) oil on canvas, GalEst, Modena (inv. 450).
- Figure 2:* Northern Italy, c. 1505. Base map of the Duchies of Ferrara and Modena, from Marco Cattini and Mario Romani, 'Le corti parallele: per una tipologia delle corti Padane dal XIII al XVI secolo', in *La corte e lo spazio, Ferrara Estense*, eds. Giuseppe Pagano, Amedeo Quondam (Rome, 1982) p. 41.
- Figure 3:* Unknown artist, detail of woodcut from Flavius Vegetius Renatus, *De re militari* (Paris, 1535) p. 128.
- Figure 4:* Copy after Titian, Alfonso I d'Este, (c.1525, copy c.1529-34) oil on canvas, Metropolitan Museum of Art, New York (acc. 27.56).
- Figure 5:* Matteo da Milano, *Estense Arms*, detail of Alfonso's *Libro d'Ore* (c.1509) *Offiziolo Alfonsino*, Lisbon, Museu Calouste Gulbenkian, MA. 149; Zagreb, Strossmayerova Galerija, SG. 339-352,15r.
- Figure 6:* Unknown artist, 'Granata Svampante', in Paulo Giovio, *Dialogo dell'imprese militari et amorse* (Lyon, 1559) p. 71.
- Figure 7:* Ferrarese school, plate (c.1491) slipware, British Museum, London (inv. 1855, 1201.70).
- Figure 8:* Mantuan school, Ferrarese medallion (c.1502) cast copper, Palazzo dei Musei, Modena (inv. 8852).
- Figure 9:* Pisanello, Ferrarese Medallion (c.1445) cast copper, Frick Collection, Pittsburgh (acc. 2016.2.111).
- Figure 10:* Taddeo Crivelli, Franco dei Russi *et al.*, 'bacinella' detail from *Bibbia di Borso* (c.1455-61) illustrated manuscript, BibEst. ms. Lat. 422-423= V.G.12-13, 3r, <https://www.wdl.org/en/item/9910/>.
- Figure 11:*

Unknown artist, *statute of Alfonso I d'Este* (16 February 1509) illustrated manuscript, BibAr. ms. Classe I, Cl. I. 478, 23v.

- Figure 12:* Unknown artist, *bolle di fratellanza of Lucrezia Borgia* (1517) illustrated manuscript, ASMo, ms. ASE, Casa e Stato Docc. spett. , b. 5, n. 40.
- Figure 13:* Matteo da Milano, detail of Alfonso's *Libro d'Ore* (c.1505-1510) illustrated manuscript, *Offiziolo Alfonsino*, 46r.
- Figure 14:* Matteo da Milano, detail of Alfonso's *Libro d'Ore* (c.1505-1510) illustrated manuscript, *Offiziolo Alfonsino*, 15r.
- Figure 15:* Matteo da Milano, detail of Alfonso's *Libro d'Ore* (c.1505-1510) illustrated manuscript, *Offiziolo Alfonsino*, 14r.
- Figure 16:* Matteo da Milano, detail of Alfonso's *Libro d'Ore* (c.1505-1510) illustrated manuscript, *Offiziolo Alfonsino*, 15r.
- Figure 17:* Matteo da Milano, detail of Alfonso's *Libro d'Ore* (c.1505-1510) illustrated manuscript, *Offiziolo Alfonsino*, 50r.
- Figure 18:* Matteo da Milano, Alfonso's *Libro d'Ore* (c.1505-1510) illustrated manuscript, *Offiziolo Alfonsino*, 13r.
- Figure 19:* Matteo da Milano, *Charter for the Charterhouse of Certosa* (1505) illustrated manuscript, ASMi, Trivulziano 1440, 1r.
- Figure 20:* Faenza school, plate fragment (c. early 16th century) maiolica, unknown collection, in Virgilio Ferrari, *L'araldica estense nello sviluppo storico del dominio ferrarese*, ed. Chiara Forlani (Ferrara, 1989) p.122
- Figure 21:* Unknown artist, mirror frame (c.1502-1520) carved wood and gilt, V&A, London (inv. 7694-1861)
- Figure 22:* Unknown artist, column capital (c.1531) marble, Loggia degli Aranci, Castello Estense, Ferrara
- Figure 23:* School of Antonio Lombardo (c.1505-16) marble bas-relief, San Cristoforo alla Certosa, Ferrara
- Figure 24:* School of Antonio Lombardo (c.1505-16) marble bas-relief, San Cristoforo alla Certosa, Ferrara
- Figure 25:* School of Antonio Lombardo (c.1505-16) marble bas-relief, San Cristoforo alla Certosa, Ferrara
- Figure 26:* Gabriele Frisoni, column capital (c.post 1500) marble, Palazzo Rondinelli, Ferrara
- Figure 27:* Unknown artist, details of fascia (c. early 16th century) plasterwork, Villa Vincenzi Pasi, Ospital Monocale. In Francesco Pertegato and Daniele Alberti, 'Scoperta la "granata svampante" di Alfonso I in una residenza estense finora ignorata', *Kermes*, 89 (March 2013) pp. 47-8
- Figure 28:* Cochapano della San Martina, detail of *Torione dritto Belvedere* (c. early 16th century) ASMo, AFdO, 278.2546. In Andrea Marchesi, *Delizie d'archivio:*

regesti e documenti per la storia delle residenze estensi nella Ferrara del Cinquecento, v.2 (Ferrara, 2015) p. 253

- Figure 29:* Sebastiano Serlio, details of architectural drawings. In Serlio, *Regole generali di architettura sopra le cinque maniere de gli edifici* (Venice, 1537) p. XXX.
- Figure 30:* Sebastiano Serlio, details of architectural drawings. In Serlio, *Regole generali di architettura sopra le cinque maniere de gli edifici* (Venice, 1537) p. LXI.
- Figure 31:* Unknown artist, grossetto coin (1606) copper minted, Castello di Udine (inv. 1501 Colloredo)
- Figure 32:* Unknown artist, emblem of the Garfagnana cities union, Garfagnana. Image: <http://www.ucgarfagnana.lu.it>
- Figure 33:* Unknown artist, emblem of Rione Santo Spirito, Ferrara. Image: <http://www.rionesantospirito.it>
- Figure 34:* Unknown artist, emblem of the Carabinieri, Italy. Image: <http://www.carabinieri.it>
- Figure 35:* Antonio Lombardo, *Mars Divesting the Armour of War* (c. 1512), marble relief, Galleria Estense, Modena (inv. 2054)
- Figure 36:* Antonio Lombardo, *Forge of Vulcan/Hephaestus (Birth of Athena)* (c. 1508-11) marble relief, Hermitage Museum, St. Petersburg (H.CK-1771)
- Figure 37:* Giannantonio da Foligno, *Plaque for Reliquary of San Maurelius* (c. 1513) silver plaque, Musei Civici di Arte Antica, Ferrara