

Christian Stucco Decoration in Southern Mesopotmia  
and the Persian Gulf Region,  
Sixth to Ninth Centuries

Catalogue

Agnieszka Lic  
St Cross College  
University of Oxford

A thesis submitted for the degree of  
*Doctor of Philosophy*  
Trinity Term 2017



# Catalogue

The catalogue presents all fragments of stucco that have been discussed in this thesis. Particular sections are arranged geographically, ie from the northernmost to the southernmost site and from west to east. Within each of the sections dedicated to a particular site, a distinction has been made between stuccoes that I have studied first-hand and those that I know from publications only. There are also a few sites, for which no fragments were accessible for a first-hand study and therefore all photographs and data come after other authors.

At the top of each sections given are all pieces of information common for all fragments discussed in this section (for example the museum those stuccoes are preserved in).

Information in the catalogue is given in the following order:

1. Catalogue number, museum/collection number or numbers (if known)
2. Current location of the fragment
3. Source of the photograph
4. Dimensions
5. Technique
6. Description
7. Additional information

Note that in many cases particular data (usually dimensions) are missing or non-applicable.

cat. no. 1: a photograph courtesy of the Museum für Islamische Kunst in Berlin

cat. nos 20–36: photographs courtesy of the Ashmolean Museum of Art and Archaeology in Oxford

cat. no. 50, 69–88: photographs courtesy of the Kuwait National Museum in Kuwait City

cat. nos 89–105: photographs courtesy of the Louvre

cat. nos 121–205: photographs courtesy of the Abu Dhabi Tourism and Culture Authority



# Koke, Iraq

Excavated by the Deutschen Ktesiphon Expedition in 1928/1929.  
Currently in the Museum für Islamische Kunst in Berlin.





## 1 [Kt. W 292]

Museum für Islamische Kunst in Berlin

phot. A. Lic

50 x 120 cm<sup>[1]</sup>

Carved

Relief figure of a standing man deprived of head, right arm, hand palms and feet. The man is wearing blue tunic and red toga.

Painted with red and blue.

---

<sup>1</sup> Based on internal documentation of the Museum für Islamische Kunst in Berlin.



## 2 [Kt. I 343]

Museum für Islamische Kunst in Berlin

phot. A. Lic

44 x 101 cm

(palmettes: 17 x 19 cm, 18 x 20 cm; half-columns: 14 x 48 cm, 13 x ~48 cm)

Carved

Two seven-petal palmettes springing from a horizontal frieze and half columns decorated with a herringbone motif.

Traces of red and yellow paint.



# Tell Dahab, Iraq

Excavated by the Deutchen Ktesiphon Expedition in 1931/32.  
Currently in the Metropolitan Museum of Art and the National Museum of Iraq  
in Baghdad (?).



### 3

One part of the decoration with pomegranates (the original number given during excavations: Kt. O 1638<sup>[1]</sup>) is now preserved in the Metropolitan Museum of Art (accession number of the piece is 32.150.14).<sup>[2]</sup> The second part is most probably preserved in the National Museum of Iraq in Baghdad.<sup>[3]</sup>

Kröger (1982), pl. 10.1

Dimensions of the MMA fragment: 23.8 x 24.79 cm<sup>[3]</sup>

Impressed (the rectangular panel) and carved (the cross).

Rectangular field with pomegranates; a cross with an anchor-like shape.

The cross was probably left in situ after excavations.



---

1 Based on internal documentation of the Museum für Islamische Kunst in Berlin.

2 Online catalogue of the Metropolitan Museum of Art.

3 Online catalogue of the Metropolitan Museum of Art.



# Qusair North, Iraq

Currently at the National Museum of Iraq in Baghdad.<sup>[1]</sup>  
Published by Cassis (2002).

---

<sup>1</sup> The information about location of pieces from Qusayr has been given by Cassis (2002), figs 7-8. A museum number of Qu 18 is given by Fuji in reference to stucco decorations with crosses from this site kept in the National Museum of Iraq but it is impossible to determine which exactly is the fragment assigned with this number; Fuji et. al. (1989), 61, note 2.





**4**

National Museum of Iraq in Baghdad

Cassis (2002), fig. 7

Dimensions unknown

Carved (?)

Fragment of a plaque decorated with a lower part of a cross ended with a roundel and framed with leaves or wings.



**5**

National Museum of Iraq in Baghdad

Cassis (2002), fig. 8

Dimensions unknown

Carved (?)

Fragment decorated with a cross. One arm of the cross is ended with a roundel and its lower part is framed with leaves or wings.



# **Tulul al-Ukhaidir, Iraq**

Excavated by Barbara Finster and Jürgen Schmidt in 1973 and 1975.





**6**

*in situ* (?)

Finster and Schmid (1976), pl. 47

Dimensions unknown

Carved

Rectangular frame decorated with a herringbone pattern. In its upper part, middle section, visible is a small cross. Top corners of the frame are filled with decorative motifs in shape of circular sector. The decoration inside the field is destroyed but an outline of a trefoil-like shape is recognizable.



**7**

Probably in the National Museum of Iraq, Baghdad<sup>[1]</sup>

Finster and Schmid (2005), fig. 7

8 x 10 cm<sup>[2]</sup>

Carved

Plaque with a cross enclosed with a simple, rectangular frame. Arms of the cross are decorated with small roundels.

<sup>1</sup> Confirmed by Barbara Finster, one of the excavators of the site (personal communication).

<sup>2</sup> Finster and Schmidt (2005), fig. 7.



# 'Ain Sha'ia

Excavated by the Japanese Archaeological Expedition to Iraq in 1986–1988.  
Published by Fuji et. al. (1989) and Okada (1990). Information on dimensions,  
technique, and paint after those publications.  
The current location is unknown.





## 8 [141]

Current location unknown

Fuji et. al. (1989), pl. 13 a

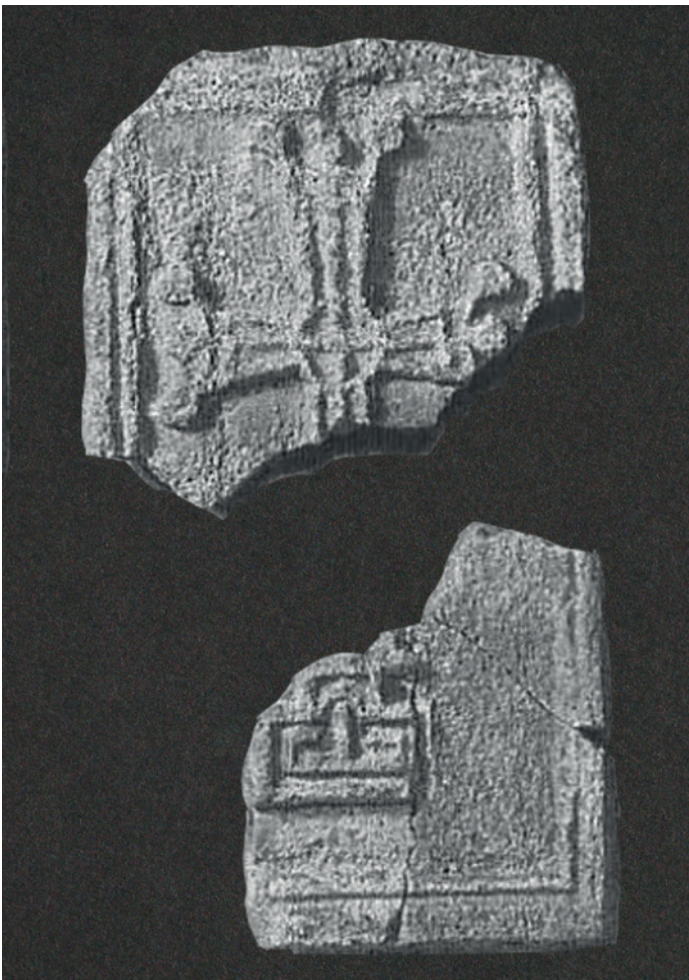
12 x 14 cm

Moulded (?)

Fragment of a plaque decorated with a cross.

Excavated at site B.<sup>[1]</sup>

<sup>1</sup> For information on particular sites see Chapter 2.



## 9

Current location unknown

Fuji et. al. (1989), pl. 19. a

Dimensions unknown

Moulded (?)

Plaque decorated with a cross enclosed with a rectangular frame.

Excavated at site B.



## 10

Current location unknown

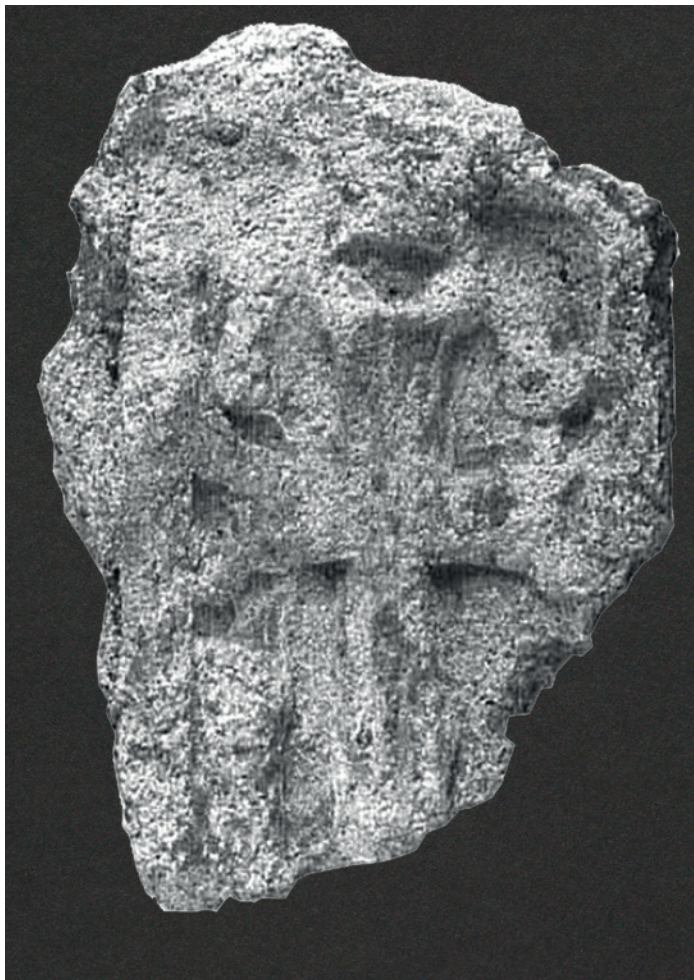
Fuji et. al. (1989), pl. 19 a

Dimensions unknown

Moulded (?)

Plaque decorated with a cross enclosed with a rectangular frame.

Excavated at site B



## 11

Current location unknown

Fuji et. al. (1989), pl. 19 b

8 x 12 cm

Moulded (?)

Fragment decorated with a cross under an arch.

Excavated at site B



## 12

Current location unknown

Fuji et. al. (1989), pl. 19 e

6.5 x 11 cm

Moulded (?)

Corner of a plaque with a fragment of an arch decorated with a string of pearls, flowers and a zig-zag frame.

Excavated at site B.



## 13

Current location unknown

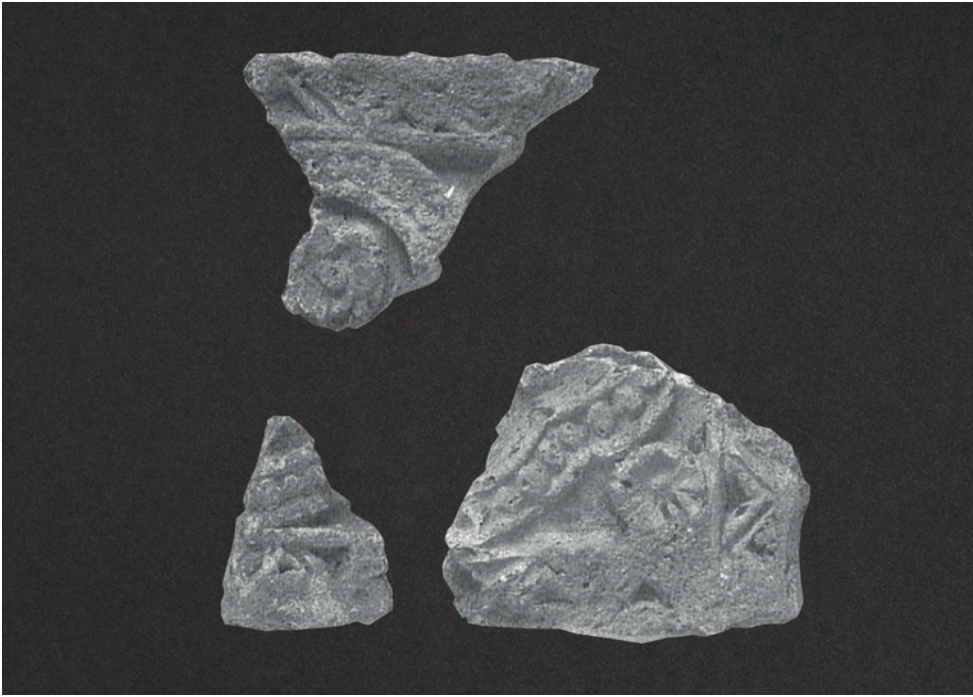
Fuji et. al. (1989), pl. 19 c

7 x 17 cm

Moulded (?)

Fragment decorated with a zig-zag motif, string of pearls and a triangular shape (possibly an upper part of a band decorating a cross)

Excavated at site B.



## 14

Current location unknown

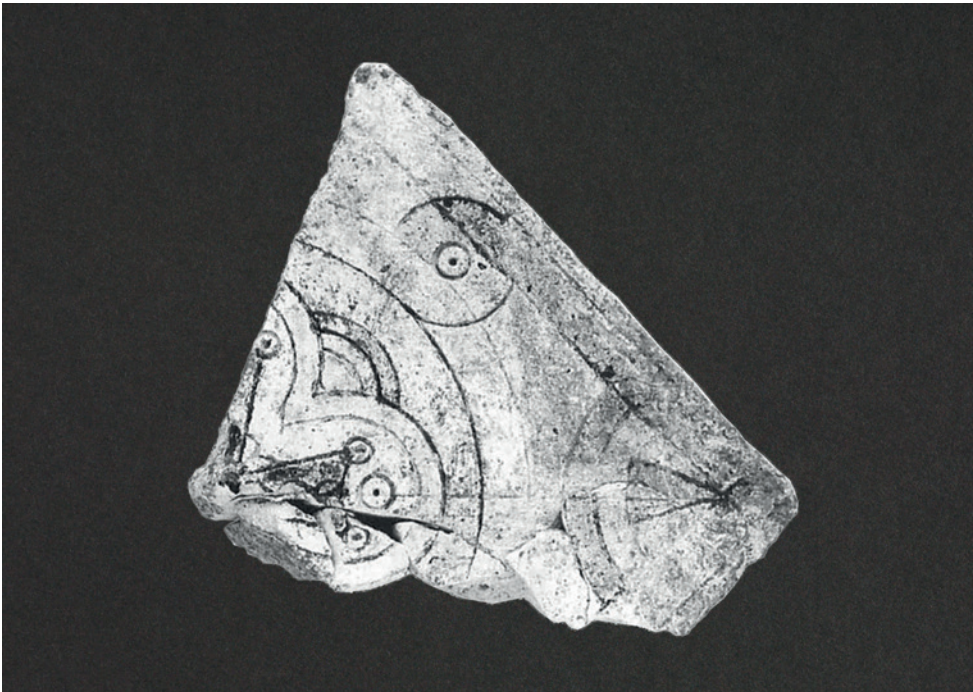
Fuji et. al. (1989), pl. 19 c

7 x 17 cm

Moulded (?)

Fragments decorated with strings of pearls, flowers and zig-zag motifs.

Excavated at site B



## 15 [148]

Current location unknown

Fuji et. al. (1989), pl. 13 b

9.5 x 10 cm

Incised

Fragment with arms of a cross enclosed with a quatrefoil (?) and roundels.

Red paint, illegible inscription in black around the cross, excavated at site F.

## 16

Current location unknown

Okada (1990), fig. 1, 11-1 and 11-2

3.5 x 2.5, 2 x 2 cm

Incised

Fragment decorated with geometric designs.

Red paint, excavated at site F.



## 17

Current location unknown

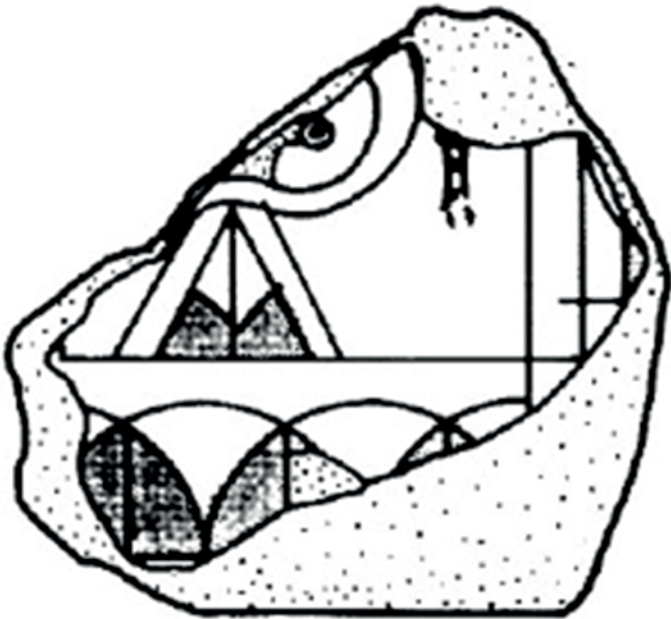
Okada (1990), fig. 1, 9

5.5 x 6 cm

Incised

Fragment with a triangular base of a cross (?).

Red paint, excavated at site F.



## 18

Current location unknown

Okada (1990), fig. 1, 7

6 x 4.5 cm

Moulded (?)

Fragment with a triangular, stepped base of a cross (?).

Excavated at site C



## 19

Current location unknown

Okada (1990), fig. 1, 6

6 x 6.5 cm

Moulded (?)

Red paint

Fragment with a cross, arms of which are ended with roundels.

Red paint, excavated at site B



# al-Hira, Iraq

Excavated by an expedition of the University of Oxford in 1931.<sup>[1]</sup>  
Currently in the Ashmolean Museum of Art and Archaeology in Oxford.

---

<sup>1</sup> A plaque, allegedly from al-Hira, which has been published repeatedly by several authors should be mentioned here. The mistake goes back to an article by the excavator of the site, David Talbot Rice – published a couple of decades after the excavations – in which a drawing of this plaque is labelled as coming from al-Hira. The same author in an excavation report published in 1932 described the plaque as coming from 'the famous 10th century church on the Island of Achthamar in Lake Van' in Armenia. There is little doubt that the author was correct in the 1932 publication and made a mistake in the 1950 article as no plaque preserved at the Ashmolean resembles the plaque in question. See Talbot Rice (1950), fig. 9 and Talbot Rice (1932), p. 282, fig. 4b.





## 20 [EA.1932.61.G]

Ashmolean Museum of Art and Archaeology in Oxford

phot. A. Lic

7 x 8 cm

Carved

Fragment of a plaque with a lower part of a cross and a leaf motif.

Excavated in church V.



## 21 [EA.1932.61.B]

Ashmolean Museum of Art and Archaeology in Oxford

phot. A. Lic

6.5 x 7 cm

Carved

Fragment of a plaque with a lower part of a cross decorated with roundels.

Excavated in church V or XI.

**22 [EA.1932.61 OR EA.1932.64]**

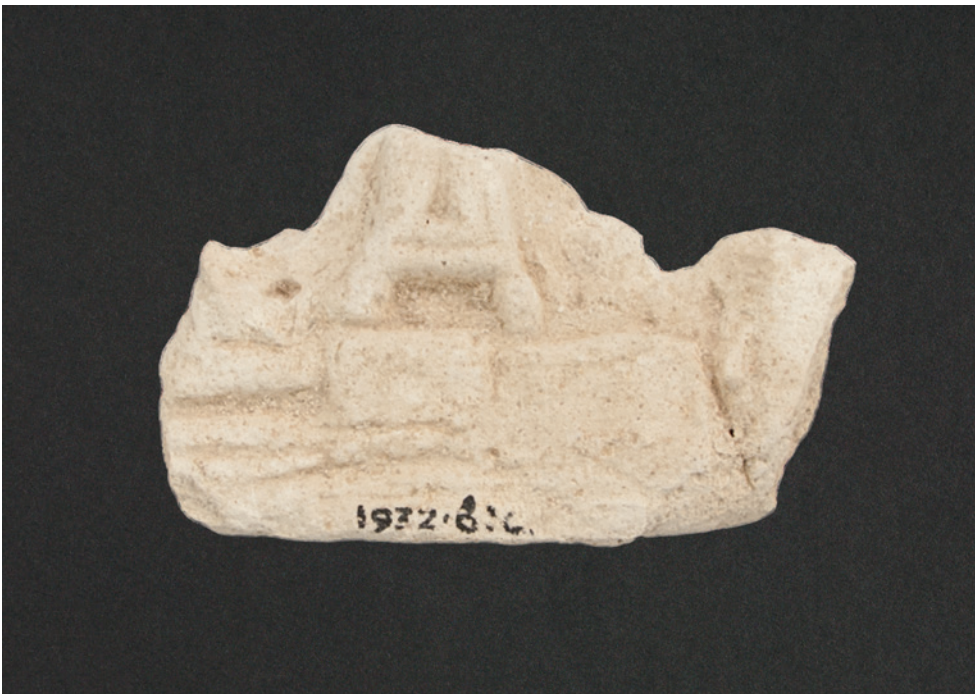
Ashmolean Museum of Art and Archaeology in Oxford

phot. A. Lic

7.5 x 8 cm

Carved

Part of a cross (?).



**23 [EA.1932.61.C]**

Ashmolean Museum of Art and Archaeology in Oxford

phot. A. Lic

4.5 x 8 cm

Carved

Fragment with a part of a cross.



## 24 [NO NUMBER]

Ashmolean Museum of Art and Archaeology in Oxford

phot. A. Lic

5 x 5.5 cm

Carved

Fragment with a stepped triangular base of a cross.



## 25 [EA.1932.61.A]

Ashmolean Museum of Art and Archaeology in Oxford

phot. A. Lic

4.5 x 8 cm

Carved

Fragment of a circular frame (?).



## 26 [EA.1932.61 OR EA.1932.64 ]

Ashmolean Museum of Art and Archaeology in Oxford

phot. A. Lic

7 x 9 cm

Carved

Part of a cross enclosed with an arch.



## 27 [NO NUMBER]

Ashmolean Museum of Art and Archaeology in Oxford

phot. A. Lic

~ 6 x 7 cm

Carved

Fragment of a plaque with rectangular and circular frames.

Excavated in church V or XI



## 28 [EA.1932.61.E]

Ashmolean Museum of Art and Archaeology in Oxford

phot. A. Lic

7 x 8 cm

Carved

Fragment of a plaque with rectangular and circular frames.

Excavated in church V or XI.



## 29 [EA.1932.61.D]

Ashmolean Museum of Art and Archaeology in Oxford

phot. A. Lic

3 x 7.5 cm

Carved

Fragment with of arms of a cross.

Excavated in church V or XI.



### 30 [EA.X.6018]

Ashmolean Museum of Art and Archaeology in Oxford

phot. A. Lic

3 x 7 cm

Carved

Fragment with a section of a rectangular frame.



### 31 [EA.1932.59]

Ashmolean Museum of Art and Archaeology in Oxford

phot. A. Lic

7 x 7 cm

Carved

Fragment decorated with geometric design.



### 32 [EA.1932.64 A]

Ashmolean Museum of Art and Archaeology in Oxford

phot. A. Lic

3 x 4 cm

Incised

Fragment with spirals composed of parallel lines.

Traces of red paint.



### 33 [NO NUMBER]

Ashmolean Museum of Art and Archaeology in Oxford

phot. A. Lic

~ 2.5 x 2.5. cm

Carved

Fragment with parallel and bending lines.



### 34 [NO NUMBER]

Ashmolean Museum of Art and Archaeology in Oxford

phot. A. Lic

~ 3 x 4.5 cm

Carved

Fragment with geometric decoration.



### 35 [EA.1932.63]

Ashmolean Museum of Art and Archaeology in Oxford

phot. A. Lic

5 x 6 cm

Incised and painted

Fragment of a plaque with geometric and foliage motifs.

Excavated in church V or XI



### **36 [EA.1932.62]**

Ashmolean Museum of Art and Archaeology in Oxford

phot. A. Lic

8 x 8 cm

Incised and painted

Fragment of a plaque with two, partially visible crosses  
decorated with multiplied roundels.

Excavated in church XI.



# **al-Hira, Iraq**

Found during emergency excavations conducted in 2007, 2009 and 2011 by an Iraqi archaeological team at the site of a prospective Al-Najaf al-Ashraf Airport.

Published by Al-Ka'bi (2014).

Currently in the National Museum of Iraq Museum in Baghdad.





### 37 [IM 002422]

National Museum of Iraq Museum in Baghdad

Al-Ka'bi (2014), fig. 1

Dimensions unknown

Moulded and carved (?)

Plaque with a cross standing on a stepped, triangular base and under an arch. The composition is enclosed with a frame decorated with triangles.



### 38 [IM 059922]

National Museum of Iraq Museum in Baghdad

Al-Ka'bi (2014), fig. 2

Dimensions unknown

Moulded and carved (?)

Plaque with a cross standing on a triangular base and under and arch. The composition is enclosed with a frame decorated with triangles.



### 39 [IM 224184]

National Museum of Iraq Museum in Baghdad

Al-Ka'bi (2014), fig. 3

Dimensions unknown

Moulded and carved (?)

Plaque with a cross standing on a triangular base. At its both sides are decorative motifs in a form of diamonds.



### 40 [Uncatalogued]

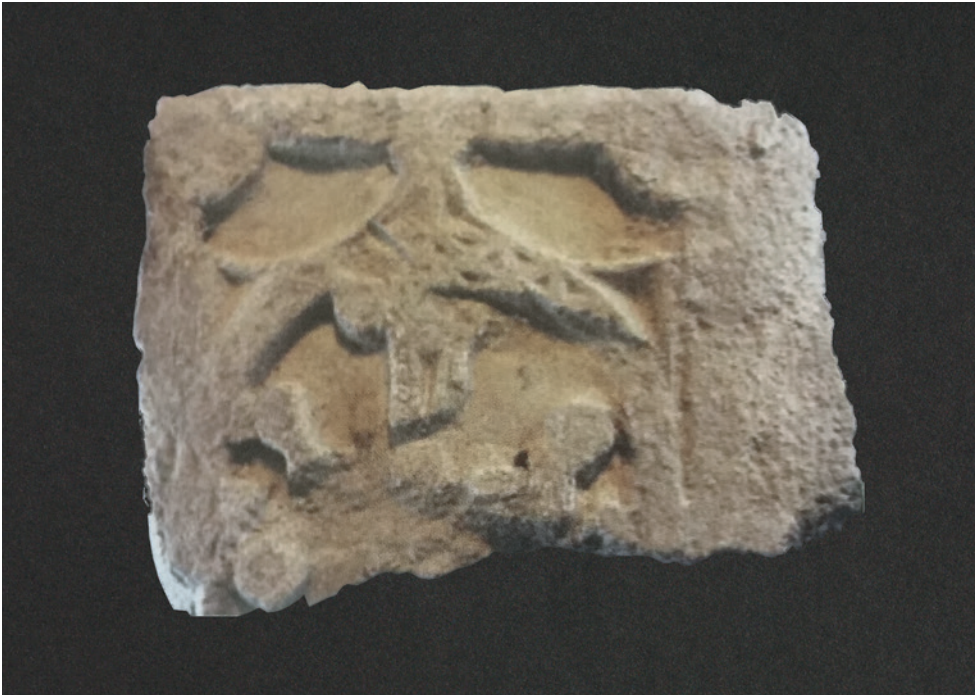
National Museum of Iraq Museum in Baghdad

Al-Ka'bi (2014), fig. 4

Dimensions unknown

Moulded and carved (?)

Upper part of a plaque decorated with a cross under an arch supported by columns. Above the arch there is a triangular architectural form (a pediment?). The composition is enclosed with a frame decorated with triangles.



### 41 [Uncatalogued]

National Museum of Iraq Museum in Baghdad

Al-Ka'bi (2014), fig. 5

Dimensions unknown

Carved (?)

Plaque with the upper part of a cross under an arch.



### 42 [Uncatalogued]

National Museum of Iraq Museum in Baghdad

Al-Ka'bi (2014) fig. 6

Dimensions unknown

Moulded and carved (?)

Plaque with a section of a cross decorated with an inscribed shape of another cross.



### 43 [Uncatalogued]

National Museum of Iraq Museum in Baghdad

Al-Ka'bi (2014), fig. 7

Dimensions unknown

Moulded and carved (?)

Plaque with a cross standing on a triangular, stepped base and decorated at both sides with bands. The cross stands under an arch supported by an architectural construction which is reminiscent of an entablature supported by pillars. The composition is enclosed with a frame composed of circular motifs.



### 44 [ IM11422]

National Museum of Iraq Museum in Baghdad

Al-Ka'bi (2014), fig. 8

Dimensions unknown

Moulded and carved (?)

Plaque with a section of a cross enclosed with a quatrefoil decorated with pearls or knobs.



#### 45 [IM 224274]

National Museum of Iraq Museum in Baghdad

Al-Ka'bi (2014), fig. 9

Dimensions unknown

Moulded and carved (?)

Plaque with the upper part of a cross standing under an arch supported by an architectural construction.



#### 46 [IM 224274]

National Museum of Iraq Museum in Baghdad

Al-Ka'bi (2014), fig. 10

Dimensions unknown

Moulded and carved (?)

Plaque with a cross decorated at sides with vegetal (?) motifs.



### 47 [IM 224201]

National Museum of Iraq Museum in Baghdad

Al-Ka'bi (2014), fig. 11

Dimensions unknown

Moulded and carved (?)

Plaque with a cross, partially preserved, enclosed with a quatrefoil.



### 48 [Uncatalogued]

al-Ka'bi (2014), fig. 12

Dimensions unknown

Moulded and carved (?)

Plaque with a cross decorated with two motifs (leaves, bands or wings) branching from its lower part.

The upper arms of the cross are decorated with large roundels.

# al-Hira, Iraq

Found during a survey conducted in 2015 by the Deutsches Archeologisches Institut. The plaque was found in a bulldozer pit south of the airport.<sup>[1]</sup>

---

<sup>1</sup> Martina Müller Wiener's presentation "The pre-Islamic and Early Islamic city of al-Hira: first results of the recent archaeological survey" at the 10th ICAANE Congress in Vienna, 27th April 2016.





## 49<sup>[1]</sup>

Current location unknown

Deutsches Archäologisches Institut (2015), phot. by Martina Müller Wiener

Dimensions unknown

Incised

Stucco plaque decorated with a cross enclosed with a rectangular frame formed of double, crossing lines. Arms of the cross are decorated with circles.

Painted with red, white and grey.

---

<sup>1</sup> According to Martina Müller Wiener (personal communication) another, almost identical plaque was found at the same site.



# 'Akkaz, Kuwait

Excavated in 1993 by Mission archéologique française à Koweït.  
Currently in the Kuwait National Museum.



## 50 [KM 6501]

Kuwait National Museum

©MAFKF<sup>(1)</sup>/A. Lic

10.5 x 11.5 cm

Carved

Fragment of a plaque (?) with the upper part of a cross and a section of an arch supported by a column.



---

<sup>1</sup> Mission archéologique franco-koweïtienne de Failaka.



# al-Qusur, Failaka island, Kuwait

Found at the Church A1 site.<sup>[1]</sup>

Excavated by Mission archéologique française à Koweït in 1988–1989 and 2007 and by Mission archéologique franco-koweïtienne de Failaka in 2013–2014.

---

<sup>1</sup> Except QSR 13-A5-17.





## 51 [KM 7496]

Dar al-Athar al-Islamiyyah museum in Kuwait  
(loan of the Kuwait National Museum)

©MAFKF/ H el ene David-Cuny

59 x 96.5 cm

Carved

Panel with a cross framed with decorative borders filled with vine scrolls and geometric motifs.

Traces of burning.



## 52 [KM 7497]

Kuwait National Museum

©MAFKF/ H el ene David-Cuny

88 x 115 cm

Carved

Panel with a cross framed with decorative borders filled with vine scrolls and geometric motifs.

Traces of burn, trace of grey paint visible in 2015.



### 53 [QSR 07/1002-B and QSR 07/1002-C]

Archaeological Centre on Failaka island

©MAFKF/ H el ene David-Cuny

12 x 25 cm

Carved

Fragment with two half palmettes.

Two joining fragment.



### 54 [QSR 07/1002-A]

Archaeological Centre on Failaka island

 MAFKF/ H el ene David-Cuny

12 x 13 cm

Carved

Fragment with a rosette



### 55 [QSR 07/1002-J]

Archaeological Centre on Failaka island

©MAFKF/ H  l  ne David-Cuny

13 x 25 cm

Carved

Fragment with an inner part of a cross.



### 56 [QSR 07/1002-K]

Archaeological Centre of Failaka island

  MAFKF/ H  l  ne David-Cuny

13.5 x 16 cm

Carved

Fragment with a section of a stem (?).



### 57 [QSR 14- H.S./2]

Archaeological Centre on Failaka island

©MAFKF/ H  l  ne David-Cuny

5 x 8.5 cm

Carved

Fragment with crossing lines.



### 58 [QSR 07/1002- F]

Archaeological Centre on Failaka island

  MAFKF/ H  l  ne David-Cuny

8.5 x 12 cm

Incised

Fragment of a plaque with crossing lines.



**59 [QSR 07/1002-H  
and QSR 07/1002- Q]**

Archaeological Centre on Failaka island

©MAFKF/ H el ene David-Cuny

6 x 12.5 cm

Carved

Fragment of a plaque with a vertical groove.

Two joining fragments.



**60 [QSR 07/1002-T]**

Archaeological Centre on Failaka island

 MAFKF/ H el ene David-Cuny

13 x 15 cm

Carved

Fragment with a five-petal palmette.



### 61 [QSR 07/1002-G]

Archaeological Centre on Failaka island

©MAFKF/ H  l  ne David-Cuny

7.5 x 8 cm

Carved

Fragment with a five-petal palmette.



### 62 [QSR 13-A5-17]

Archaeological Centre on Failaka island

  MAFKF/ H  l  ne David-Cuny

~ 7.5 x 11 cm

Carved

Fragment with a five-petal palmette.

Found in what had been probably a secondary location  
(sector A5)



### 63 [QSR 07/1002-U]

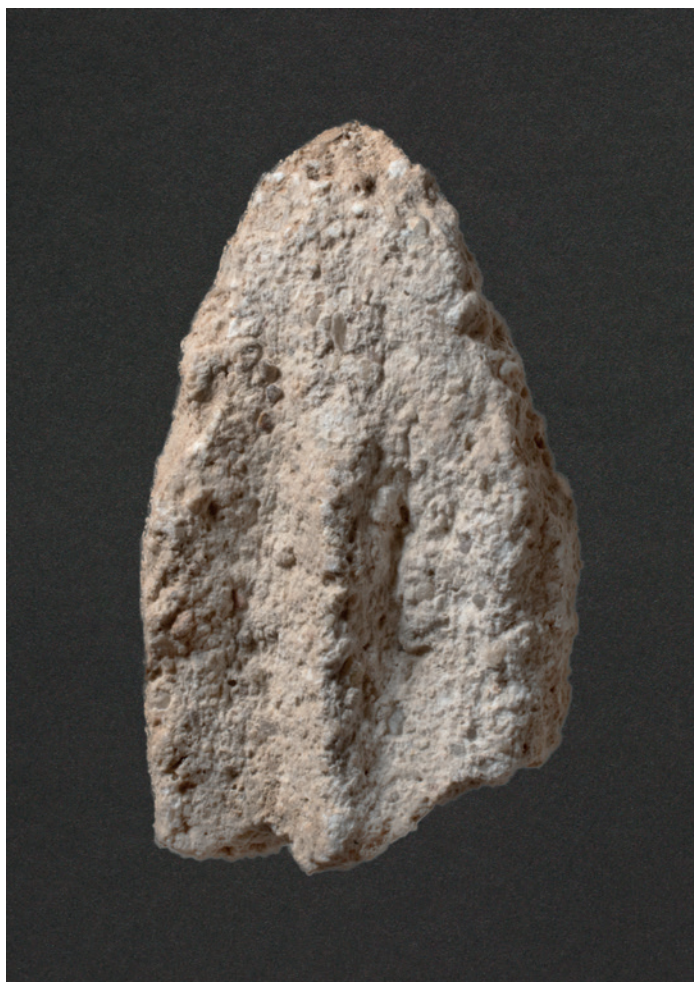
Archaeological Centre on Failaka island

©MAFKF/ H el ene David-Cuny

11 x 13.5 cm

Carved

Fragment with a five-petal palmette.



### 64 [QSR 07/1002-P]

Archaeological Centre on Failaka island

 MAFKF/ H el ene David-Cuny

2.5 x 5 cm

Carved

Fragment with a section of a petal of a palmette.



### 65 [QSR 07/1002-M]

Archaeological Centre on Failaka island

©MAFKF/ Hélène David-Cuny

11.5 x 15 cm

Moulded

Fragment with two seven-petal palmettes.



### 66 [QSR 07/1002-N]

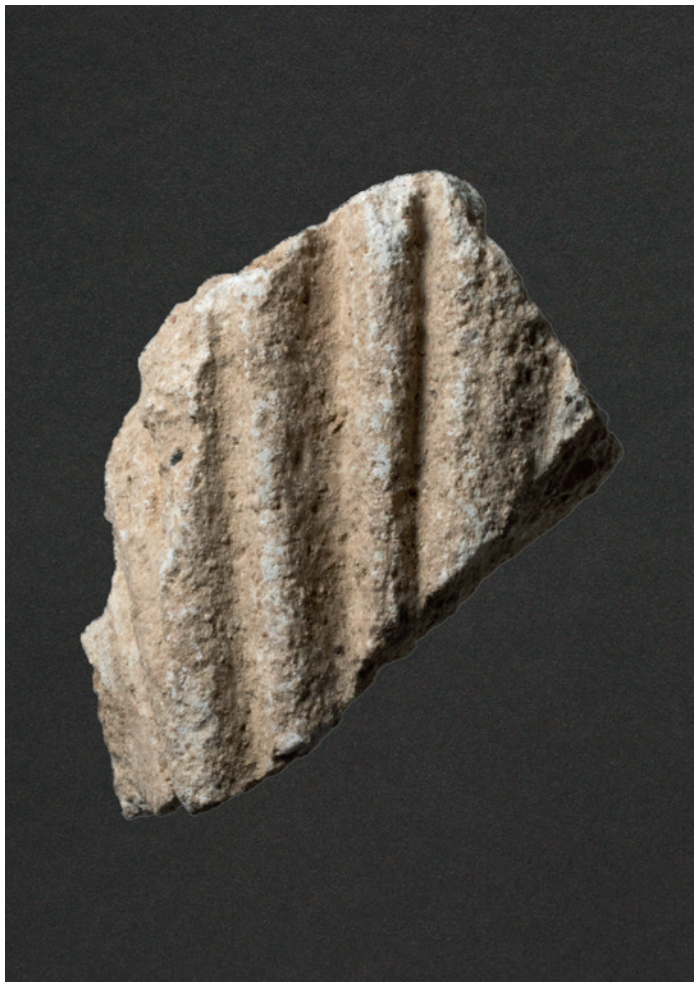
Archaeological Centre on Failaka island

©MAFKF/ Hélène David-Cuny

6.5 x 12 cm

Moulded

Seven-petal palmette



**67 [QSR 07/1003-A]**

Kuwait National Musuem  
©MAFKF/ H  l  ne David-Cuny  
4.5 x 7 cm  
Carved  
Fragment with parallel lines.



**68 [QSR 07/1007-A]**

Kuwait National Musuem  
  MAFKF/ H  l  ne David-Cuny  
8 x 8.5 cm  
Carved  
Fragment with parallel and bedding lines.



### 69 [KM 7498-1]

Kuwait National Museum

©MAFKF/ H  l  ne David-Cuny

10 x 13 cm

Carved

Fragment with an almond-like shape.



### 70 [KM 7498-2]

Kuwait National Museum

  MAFKF/ H  l  ne David-Cuny

5 x 12 cm

Carved

Fragment with parallel lines and a fragment of a roundel or a scroll (?)

Traces of burning (?)



### 71 [KM 7498-3]

Kuwait National Museum

©MAFKF/ H  l  ne David-Cuny

7 x 15 cm

Carved

Fragment with a section of an arm of a cross ended with a knob.  
Traces of burning.



### 72 [KM 7498-4]

Kuwait National Museum

  MAFKF/ H  l  ne David-Cuny

9 x 11 cm

Carved

Fragment with a section of a stepped motif (a base of a cross?).



**73 [KM 7498-5]**

Kuwait National Museum

©MAFKF/ H  l  ne David-Cuny

8 x 8.5 cm

Carved

Fragment with mouldings and grooves.

Traces of burning (?)



**74 [KM 7498-6]**

Kuwait National Museum

  MAFKF/ H  l  ne David-Cuny

6 x 8.5 cm

Carved

Fragment with parallel mouldings.

Traces of burning (?)



**75 [KM 7498-7]**

Kuwait National Museum

©MAFKF/ H  l  ne David-Cuny

4.5 x 5.5 cm

Carved

Fragment with parallel mouldings and grooves.

Traces of burning (?).



**76 [KM 7498-8]**

Kuwait National Museum

  MAFKF/ H  l  ne David-Cuny

4.5 x 7 cm

Carved

Fragment with parallel mouldings and grooves.



### 77 [KM 7498-10]

Kuwait National Museum

©MAFKF/ Hélène David-Cuny

8 x 11 cm

Carved

Fragment with parallel and diagonal mouldings and grooves.

Traces of burning.



### 78 [KM 7498-11]

Kuwait National Museum

©MAFKF/ Hélène David-Cuny

7 x 10.5 cm

Carved

Fragment with parallel and slightly bending lines (a part of a roundel or a scroll?)

Traces of burning (?)



### 79 [KM 7498-12]

Kuwait National Museum

©MAFKF/ Hélène David-Cuny

6.5 x 6.5 cm

Carved

Fragment with a knob (?), possibly a knob ending an arm of a cross.

Traces of whitewash (?).



### 80 [KM 7498-13]

Kuwait National Museum

©MAFKF/ Hélène David-Cuny

4 x 5 cm

Carved

Fragment with parallel mouldings and grooves.

Traces of burning and glue.



### 81 [KM 7498-14]

Kuwait National Museum

©MAFKF/ H  l  ne David-Cuny

5 x 16 cm

Carved

Fragment with parallel mouldings and grooves.

Traces of glue.



### 82 [KM 7498-16]

Kuwait National Museum

  MAFKF/ H  l  ne David-Cuny

5.5 x 9.5 cm

Carved

Fragment with a fragment of a stepped motif (a base of a cross?)



### 83 [KM 7498-17]

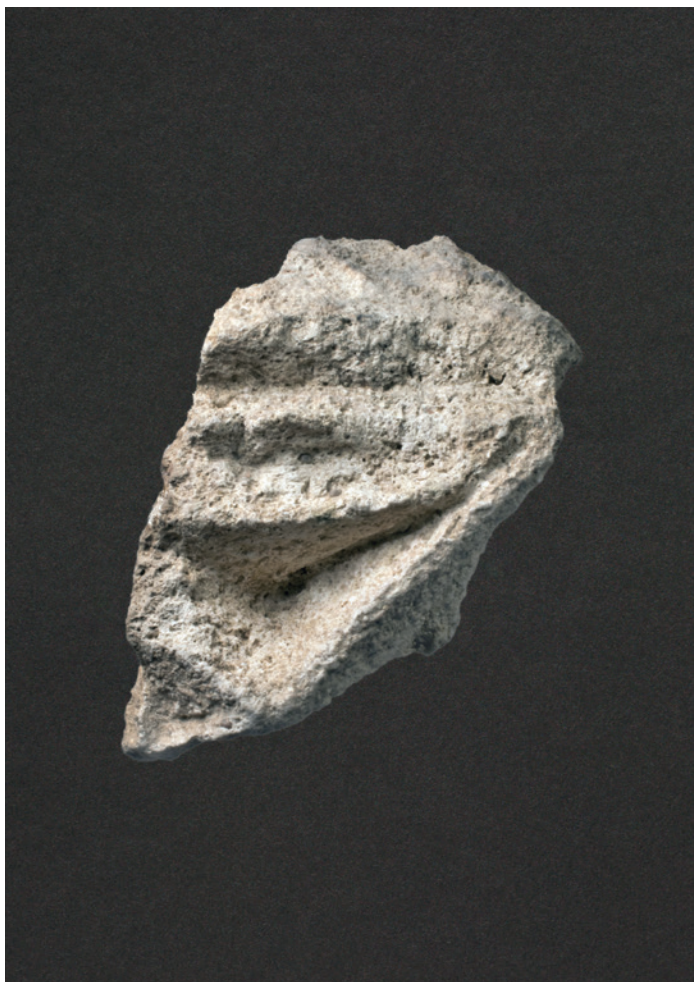
Kuwait National Museum

©MAFKF/ H  l  ne David-Cuny

5.5 x 7.5 cm

Carved

Fragment with crossing lines, an inner part of a cross.



### 84 [KM 7498-18]

Kuwait National Museum

  MAFKF/ H  l  ne David-Cuny

5.5 x 8 cm

Carved

Fragment with an almond-like shape.



### 85 [KM 7498-19]

Kuwait National Museum

©MAFKF/ Hélène David-Cuny

4.5 x 6.5 cm

Carved

Fragment with sections of two almond-like shapes.



### 86 [KM 7498-20]

Kuwait National Museum

©MAFKF/ Hélène David-Cuny

5.5 x 6 cm

Carved

Fragment with a section of a bunch of grapes.



### 87 [KM 7498-21]

Kuwait National Museum

©MAFKF/ H  l  ne David-Cuny

5 x 8 cm

Carved

Fragment with a section of a bunch of grapes.



### 88 [KM 7498-22]

Kuwait National Museum

  MAFKF/ H  l  ne David-Cuny

5 x 6.5 cm

Carved

Fragment with parallel and slightly bending lines (a fragment of a roundel or a scroll?).



# Kharg Island

Excavated by Roman Ghirshman in 1960.  
Currently in the Louvre.





## 89 [AC 888 (G 109)]

The Louvre

phot. A. Lic

8 x 19 cm

Moulded and carved (?)

Plaque or fragment of wall plaster<sup>[1]</sup> with a cross decorated with parallel grooves and supported by leaves or wings.

Largely reconstructed.

---

<sup>1</sup> The excavator of the site stated that „All the communicating doors between the three separate aisles had Nestorian cross carved over them (...) which may suggest that those crosses were carved directly in plaster covering walls of the building and later cut to shape of plaques by excavators, Ghirshman (1960), 14.



## 90 [AC 887 (SB 19322, G 107)]<sup>[1]</sup>

The Louvre

phot. A. Lic

12.5 x 24.5 cm

Moulded and carved (?)

Plaque or a fragment of wall plaster decorated with a cross. The lower part of the vertical beam is doubled and supported by a triangular, stepped base.

Largely reconstructed.

---

<sup>1</sup> In Steve (2003), pl. 9 pictures of four plaques (or their fragments) of this type are published (for two of them see further part of this section of the catalogue). None of them, however, looks identical to the plaque above what indicates that the conservation obscured its original appearance. It is also difficult to determine which of the two whole plaques published by Steve is the one above.



## 91 [AC 886 (SB 13914, G 103)]

The Louvre

phot. A. Lic

19.5 x 20.5 cm

Moulded (?)

Tile decorated with a cross, arms of which end with palmettes. Half-palmettes spring also from the base of a cross, fill the sides of the plaque and form square fields in its upper corners.

Largely reconstructed.



## 92 [AC 890 (G 114)]

The Louvre

phot. A. Lic

9.5 x 43.5 cm

Moulded and carved (?)

Frieze decorated with a vine scroll filled with bunches of grapes, geometric motifs and a palm leaf.

Largely reconstructed.



### 93 [AC 889 (SB 13915, G 113)]

The Louvre

phot. A. Lic

43 x 10.5 cm

Moulded and carved (?)

Frieze decorated with a vine scroll filled with palm leaves, a bunch of grapes and a geometric motif.

Largely reconstructed.



### 94 [AC 891 (G 117)]

The Louvre

phot. A. Lic

12 x 15 cm

Moulded or carved

Fragment decorated with a heart-shaped palmette.



**95 [AC 892 (G 119)]**

The Louvre

phot. A. Lic

7 x 14 cm

Moulded or carved

Fragment decorated with a vegetal motif.



**96 [AC 893 (G 121)]**

The Louvre

phot. A. Lic

9 x 12 cm

Moulded or carved

Fragment decorated with a vegetal motif.



### 97 [AC 894 (G 139)]

The Louvre

phot. A. Lic

12.5 x 26 cm

Moulded or carved

Frieze decorated with square knobs and wavy shapes.



### 98 [AC 895 (G 140)]

The Louvre

phot. A. Lic

6 x 9 cm

Carved (?)

Fragment decorated with crossing parallel lines.



### 99 [AC 896 (G 139)]

The Louvre

phot. A. Lic

6.5 x 8.5 cm

Carved (?)

Fragment defecated with a square.



### 100 [AC 883 (SB 19321)]

The Louvre

phot. A. Lic

14.5 x 27.4 cm

Moulded and carved (?)

Fragment of a frieze decorated with large, three-petal leaves and small leaves marked with simple incisions. Largely reconstructed.



### 101 [AC 897 (G 139)]

The Louvre

phot. A. Lic

6 x 11.5 cm

Carved or moulded

Frieze (?) decorated with diamond-like shapes.



### 102 [AC 898 (G 137)]

The Louvre

phot. A. Lic

5.5 x 10 cm

Carved or moulded

Frieze (?) decorated with diamond-like shapes.



### 103 [AC 899 (G 138)]

The Louvre

phot. A. Lic

5 x 10 cm

Carved or moulded

Fragment decorated with a rosette.



### 104 [AC 901 (G 122)]

The Louvre

phot. A. Lic

9 x 11 cm

Carved or moulded

Fragment decorated with a floral (?) motif.



## 105 [AC 900 (G 120)]

The Louvre

phot. A. Lic

9 x 11 cm

Carved or moulded

Fragment decorated with a floral (?) motif.



# Kharg Island

Excavated by Roman Ghirshman in 1960.  
Current location unknown.





## 106 [KMo 112<sup>[1]</sup>]

Current location unknown

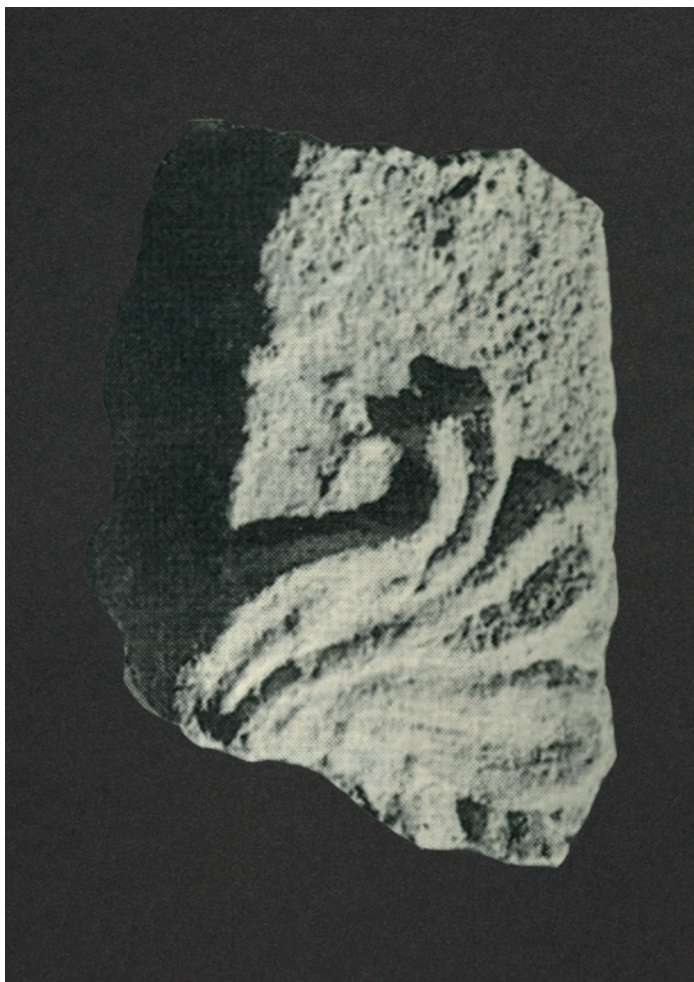
Steve (2003), pl. 12.4

Dimensions unknown

Moulded and carved (?)

Frieze decorated with a vine scroll and stepped, triangular motifs.

<sup>1</sup> Numbers after Hardy-Guilbert (2003) and Hardy-Guilbert and Rougeulle (2003). They refer to the fragments that were most probably brought by Ghirshman from Kharg to the Louvre but they follow a slightly different format than pieces preserved at the museum at the moment. I did not have an opportunity to study pieces included in this part of the catalogue and it is difficult to determine whether those fragments are still preserved in the Louvre as the published pictures are archival photographs by Ghirshman, see: Hardy-Guilbert (2003), pl. 11-12. Our understanding of the whole collection of stuccoes from Kharg is further complicated by the fact that some of the fragments preserved at the Louvre (which I have studied) are not included in the publications by Hardy-Guilbert and Rougeulle.



## 107 [KMo 131]

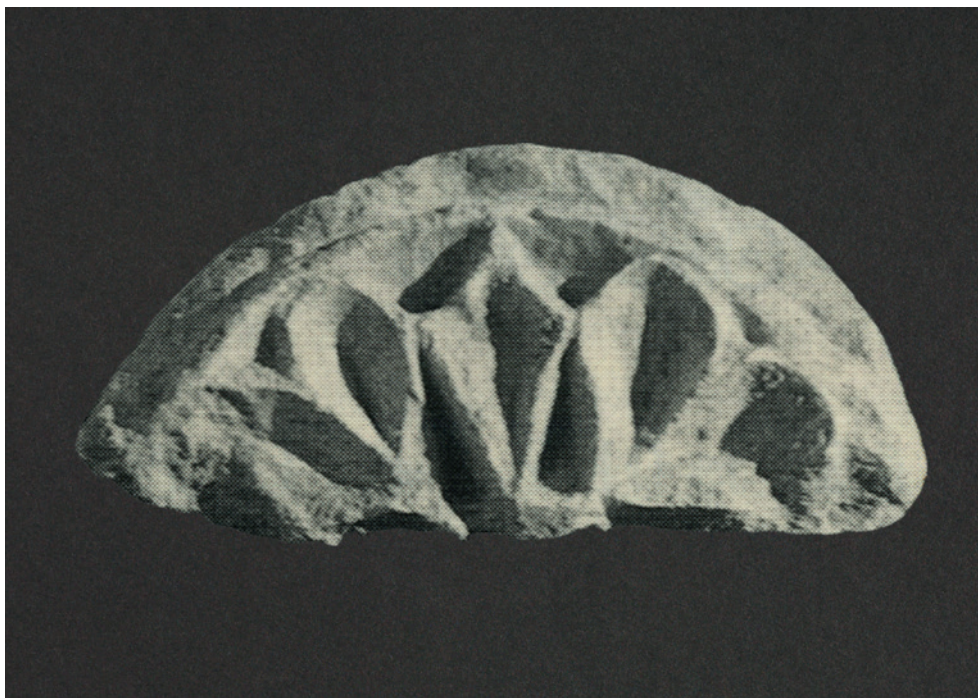
Current location unknown

Steve (2003), pl. 11. 8

Dimensions unknown

Moulded or carved

Fragment decorated with a vegetal motif (?).



### 108 [KMo 124]

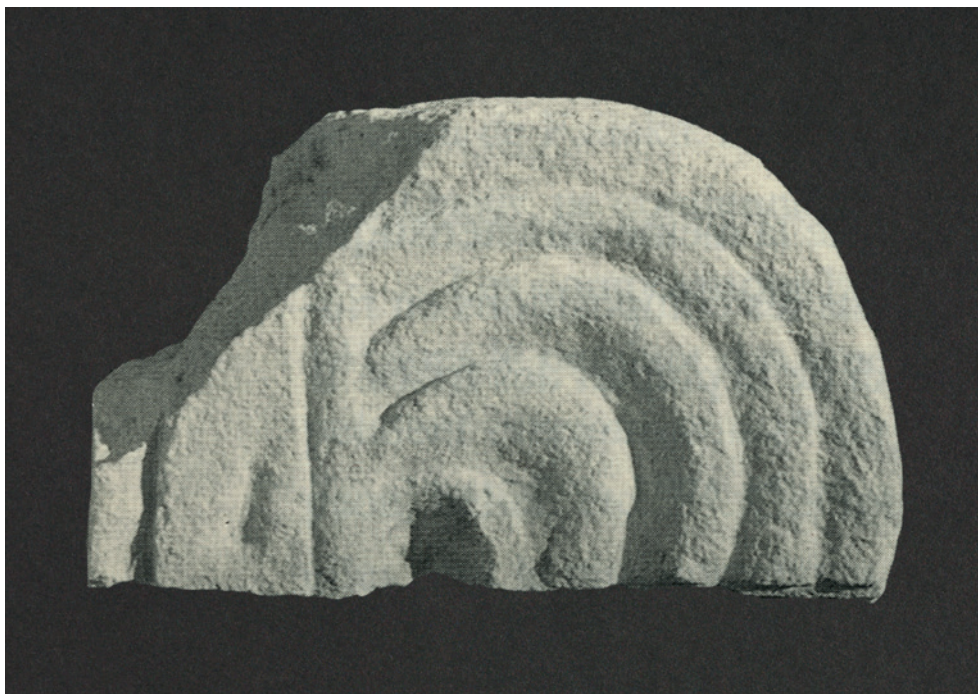
Current location unknown

Steve (2003), pl. 11. 9

Dimensions unknown

Carved (?)

Fragment decorated with a rosette.



### 109 [KMo126a]

Current location unknown

Steve (2003), pl. 11. 11

Dimensions unknown

Carved (?)

Fragment decorated with multiplied arches.



### 110 [KMo 130]

Current location unknown

Steve (2003), pl. 11. 12

Dimensions unknown

Carved (?)

Fragment decorated with multiplied circles.



### 111 [KMo 125]

Current location unknown

Steve (2003), pl. 11. 13

Dimensions unknown

Carved (?)

Fragment decorated with multiplied circles and triangles.

### 112 [KMo 102]

Current location unknown

Steve (2003), pl. 10. 4

Dimensions unknown

Moulded (?)

Tile with a cross decorated with foliate motifs.



### 113 [KMo 129]

Current location unknown

Steve (2003), pl. 10 2

Dimensions unknown

Carved (?)

Round fragment decorated with a cross-like shape.



## 114 [KMo 101]

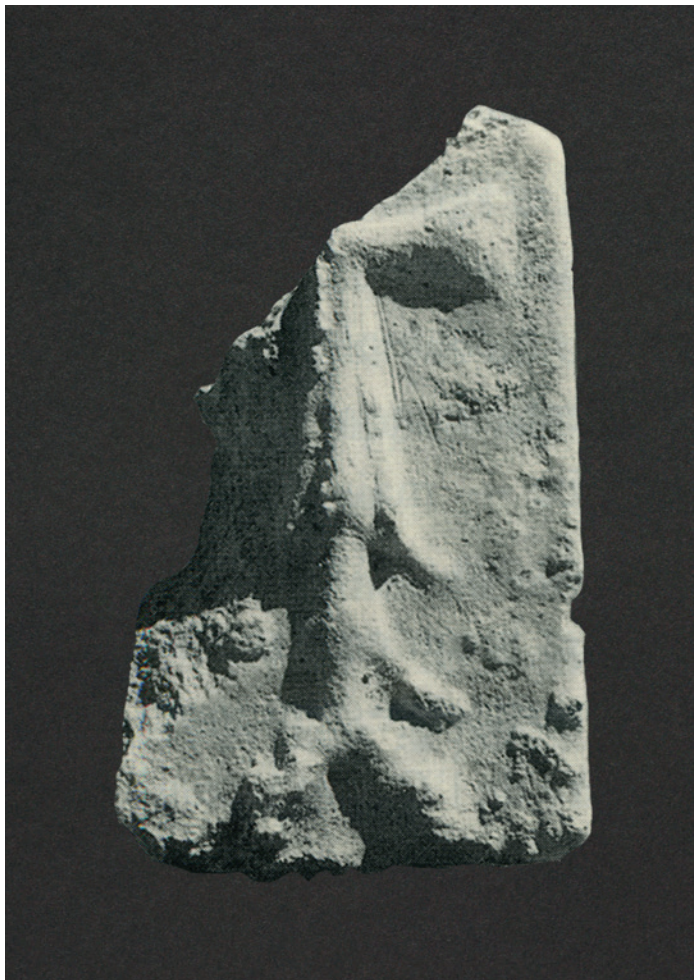
Current location unknown

Steve (2003), pl. 10. 1

Dimensions unknown

Moulded or carved

Plaque decorated with a cross enclosed with a quatrefoil. The cross is decorated with grooves and roundels at the ends of arms and in the space between the arms. The upper and the bottom part of the plaque is filled with decorative motifs of roundels and geometric patterns.



## 115

Current location unknown

Steve (2003), pl. 9.3

Dimensions unknown

Moulded and carved (?)

Plaque or a fragment of wall plaster decorated with a cross. The lower part of the vertical beam is doubled and supported by a triangular, stepped base.



## 116

Current location unknown

Steve (2003), pl. 9.2

Dimensions unknown

Moulded and carved (?)

Plaque or a fragment of wall plaster decorated with a cross.

# Jubail, Saudi Arabia

Preserved *in situ*.

Published by Langfeldt (1994). All dimensions after this publication.





## 117

*In situ*

phot. by Harold Brockwell (licensed under the Creative Commons Attribution-Share Alike 3.0 Unported license)

Dimensions of the frieze: ~ 10 x 70 cm

Moulded (?)

Frieze decorated with a vine scroll with alternating rosettes and palmettes.



## 118

*In situ*

Langfeldt (1994), fig. 9

Dimensions of the frieze: ~ 10 x 75 cm

Moulded (?)

Frieze decorated with a vine scroll with alternating rosettes and palmettes.



**119**

*In situ*

Langfeldt (1994), fig. 5

H: ~ 28-30 cm

Impressed in stucco

Shape of a cross standing on a stepped base.



**120**

*In situ*

Langfeldt (1994), fig. 6

H: ~ 28-30 cm

Impressed in stucco

Shape of a simple cross.

# **Sir Bani Yas island, United Arab Emirates**

Excavated in 1993–1996, 2009 and 2011.

Currently a part of the Abu Dhabi Tourism & Culture Authority collection.





### 121 [139]

Abu Dhabi Tourism & Culture Authority collection

phot. A. Lic

6 x 8 cm

Moulded

Fragment SBY Type 5; a triangular, stepped motif.



### 122 [156]

Abu Dhabi Tourism & Culture Authority collection

phot. A. Lic 6 x 7 cm

Moulded

Tile SBY Type 4; a palm tree, a fleur-de-lis and a cross.



### 123 [389]

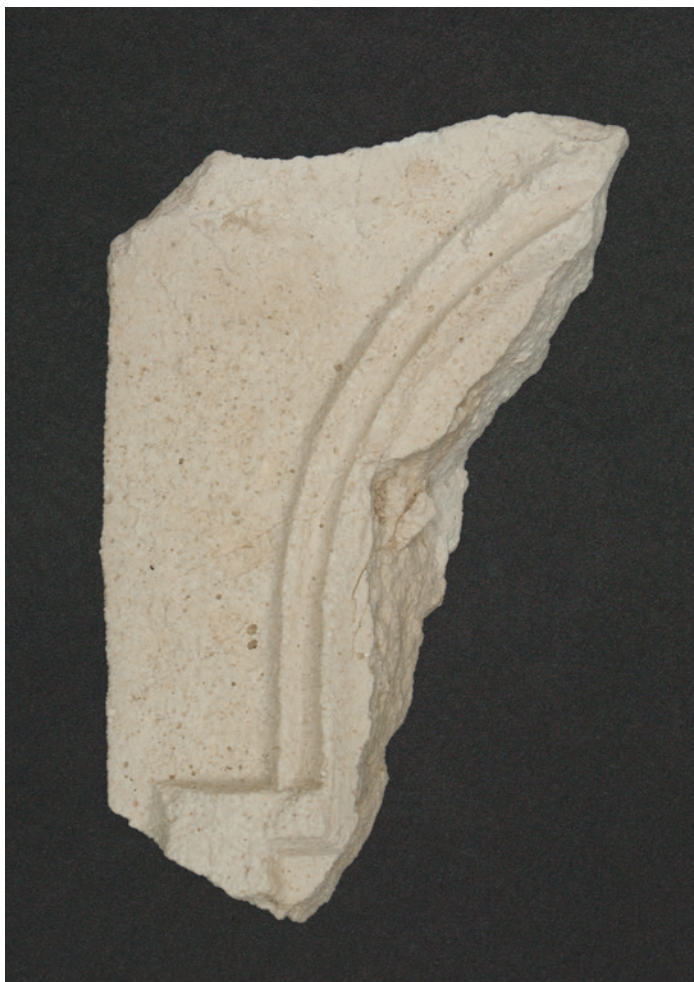
Abu Dhabi Tourism & Culture Authority collection

phot. A. Lic

11 x 14 cm

Moulded

Frieze SBY Type 1, a vine scroll with a bunch of grapes.



### 124 [391]

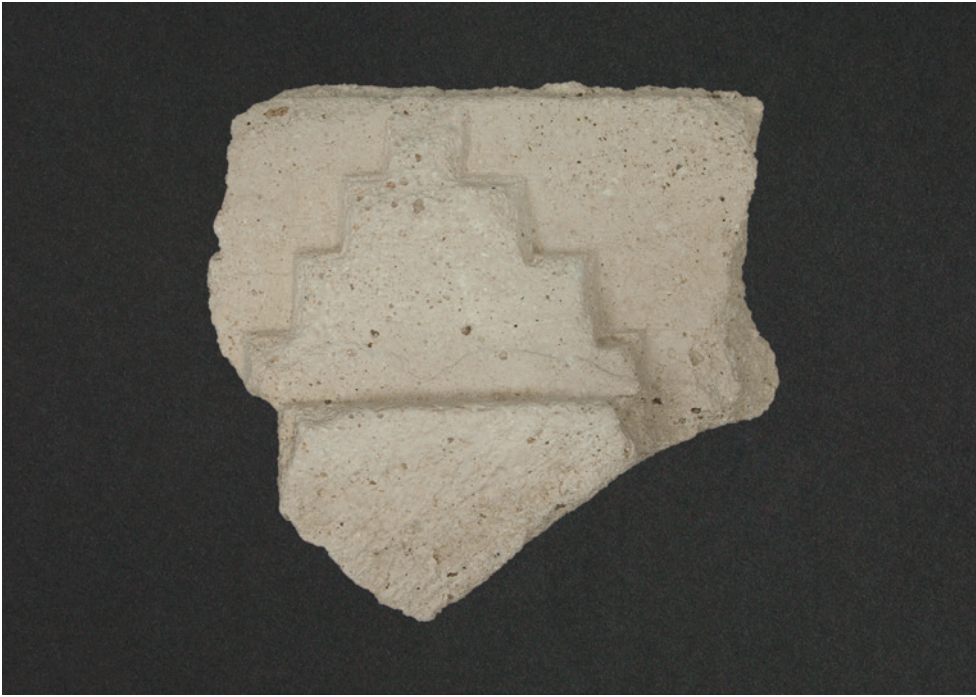
Abu Dhabi Tourism & Culture Authority collection

phot. A. Lic

6.5 x 11.5 cm

Moulded

Plaque SBY Type 3; a fragment of an arch.



### 125 [470]

Abu Dhabi Tourism & Culture Authority collection

phot. A. Lic

13 x 13.5 cm

Moulded

Fragment SBY Type 5; a triangular, stepped motif.



### 126 [663]

Abu Dhabi Tourism & Culture Authority collection

phot. A. Lic

8 x 6 cm

Moulded

Frieze SBY Type 2; a cross enclosed with a vine scroll, fragments of 'strings of pearls'.

## 127 [1010]

Abu Dhabi Tourism & Culture Authority collection

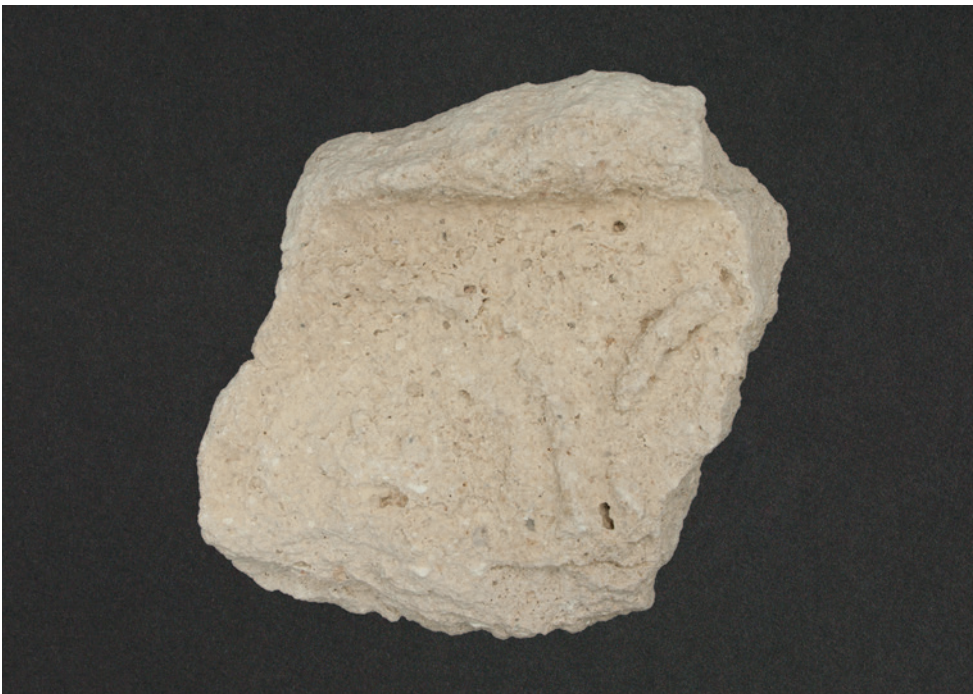
phot. A. Lic

a – ~3 x 4 cm

b- ~ 4.5 x 5 cm

Moulded

Frieze SBY Type 2; fragments of vine scrolls and 'strings of pearls'.



## 128 [1137]

Abu Dhabi Tourism & Culture Authority collection

phot. A. Lic 10.5 x 11 cm

Moulded

Frieze SBY Type 1; fragments of vine scrolls, characteristic protruding edge characteristic for stuccoes Type 1.



### 129 [1138]

Abu Dhabi Tourism & Culture Authority collection

phot. A. Lic

10 x 12 cm

Moulded

Frieze SBY Type 1; fragments of vine scrolls, protruding edge characteristic for stuccoes Type 1.



### 130 [1139]

Abu Dhabi Tourism & Culture Authority collection

phot. A. Lic

12 x 13 cm

Moulded

Frieze SBY Type 1; a vine scroll decorated with a palm leaf.



### 131 [1140]

Abu Dhabi Tourism & Culture Authority collection

phot. A. Lic

7 x 11 cm

Moulded

Frieze SBY Type 1; a square, stepped motif enclosing a cross.



### 132 [1141]

Abu Dhabi Tourism & Culture Authority collection

phot. A. Lic

6.5 cm x 8.5

Moulded

Frieze SBY Type 1; fragments of vine scrolls.



### 133 [1144]

Abu Dhabi Tourism & Culture Authority collection

phot. A. Lic

3 x 6 cm

Moulded

Frieze SBY Type 3; a fragment of a leaf.



### 134 [1147]

Abu Dhabi Tourism & Culture Authority collection

phot. A. Lic

2 x 4.5 cm

Moulded

Tile SBY Type 4 (?); arms of a cross.



### 135 [1152]

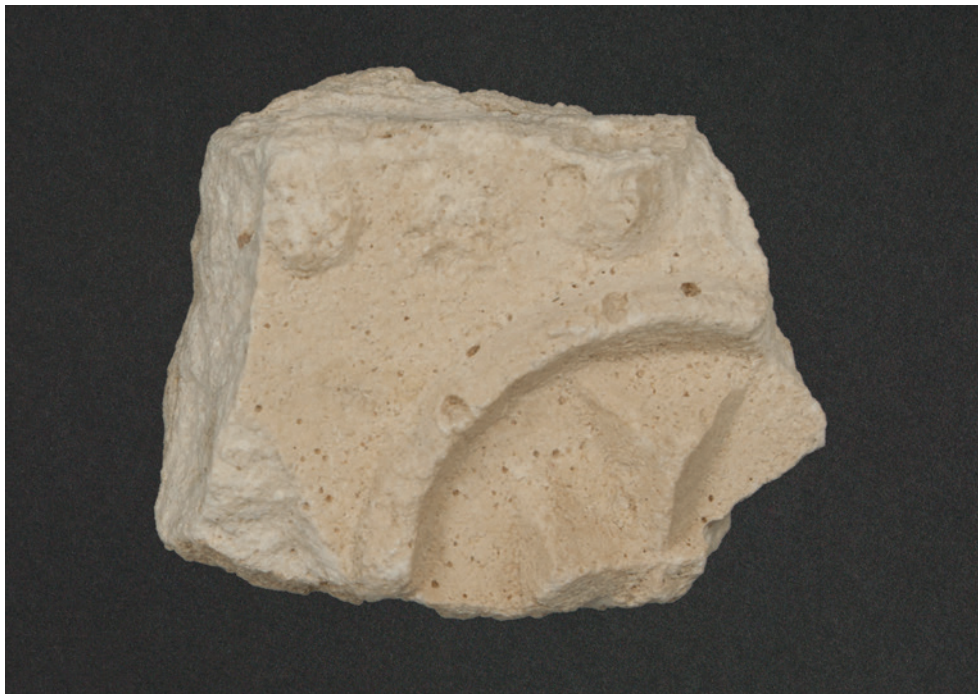
Abu Dhabi Tourism & Culture Authority collection

phot. A. Lic

10 x 13 cm

Moulded

Frieze SBY Type 1; a vine scroll with a palm leaf.



### 136 [1154]

Abu Dhabi Tourism & Culture Authority collection

phot. A. Lic

4 x 5.5 cm

Moulded

Frieze SBY Type 2; a fragment of a vine scroll enclosing a cross; fragments of a 'string of pearls'.



### 137 [1155]

Abu Dhabi Tourism & Culture Authority collection

phot. A. Lic

2.5 x 3 cm

Moulded

Frieze SBY Type 2; a fragment of a 'string of pearls'.



### 138 [1157]

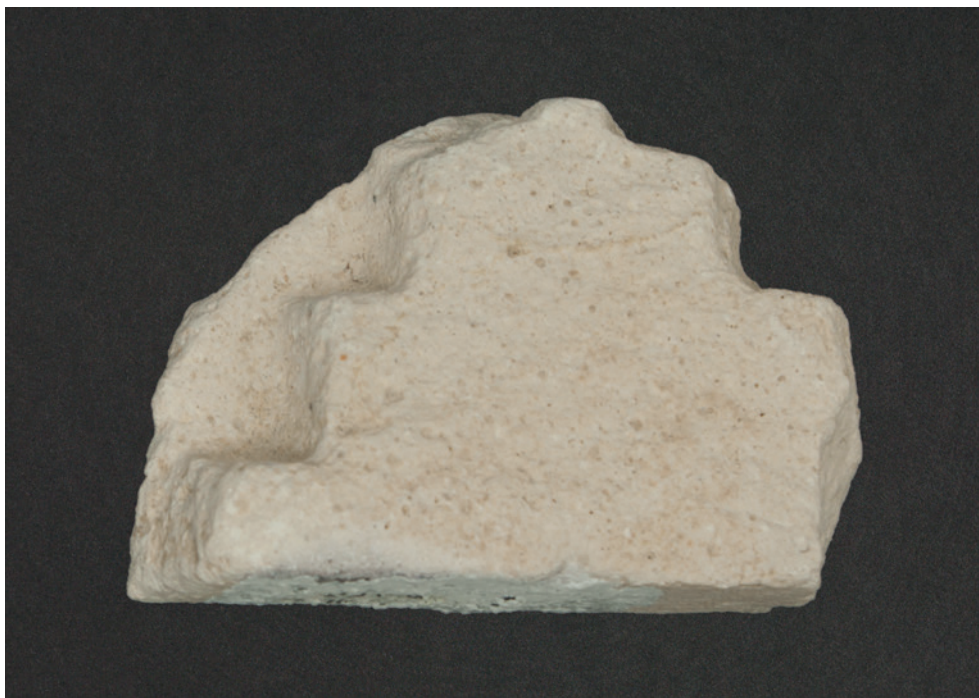
Abu Dhabi Tourism & Culture Authority collection

phot. A. Lic

5 x 6 cm

Moulded

Plaque SBY Type 3; a fragment of a leaf stem; triangular stepped basis supporting a 'pillar'.



### 139 [1158]

Abu Dhabi Tourism & Culture Authority collection

phot. A. Lic

6 x 8 cm

Moulded

Fragment SBY Type 5; a triangular, stepped motif.



### 140 [1159]

Abu Dhabi Tourism & Culture Authority collection

phot. A. Lic

9.5 x 12 cm

Moulded

Frieze SBY Type 1; a vine scroll enclosing a bunch of grapes; a protruding edge characteristic for stuccoes Type 1.



### 141 [1202]

Abu Dhabi Tourism & Culture Authority collection

phot. A. Lic

16.5 x 16.5 cm

Moulded

Frieze SBY Type 1; a vine scroll enclosing a palm leaf and a bunch of grapes; a protruding edge characteristic for stuccoes Type 1.



### 142 [1203]

Abu Dhabi Tourism & Culture Authority collection

phot. A. Lic

11.5 x 9 cm

Moulded

Frieze SBY Type 2; a vine scroll enclosing a palmette, fragments of 'strings of pearls'.



### 143 [1203]

Abu Dhabi Tourism & Culture Authority collection

phot. A. Lic

6 x 8 cm

Moulded

Frieze SBY Type 2; a fragment of a vine scroll enclosing a palmette, a fragment of a 'string of pearls'.



### 144 [1204]

Abu Dhabi Tourism & Culture Authority collection

phot. A. Lic

a ~9 x 10 cm

b ~6 x 10 cm

c ~7.5 x 9.5

Moulded



## 145 [1204]

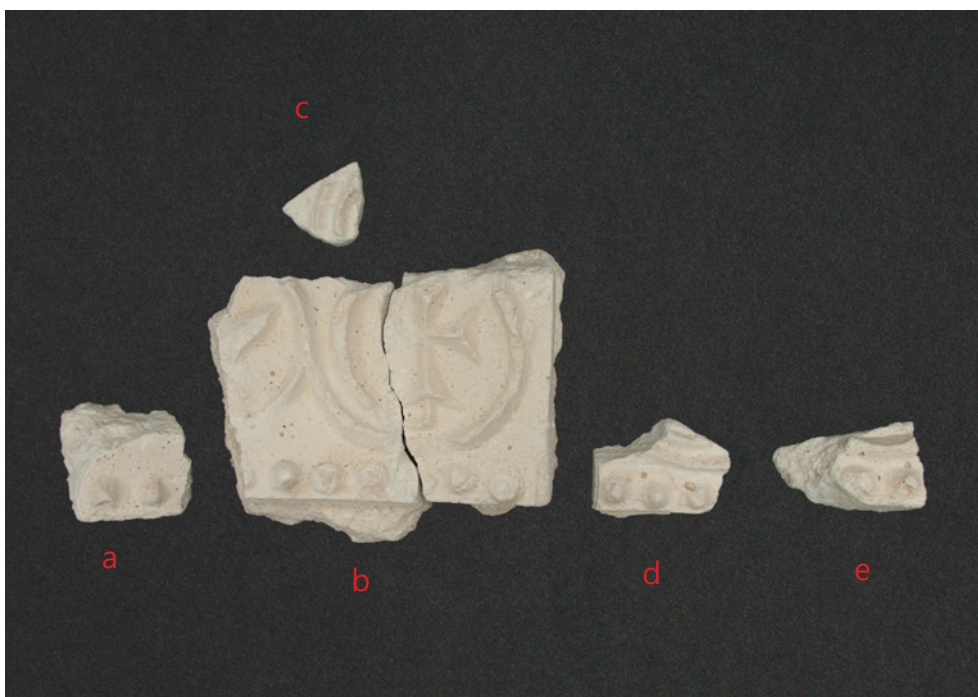
Abu Dhabi Tourism & Culture Authority collection

phot. A. Lic

~ 19 x 24 cm

Moulded

Frieze SBY Type 1 (?); fragment of a vine scroll.



## 146 [1205]

Abu Dhabi Tourism & Culture Authority collection

phot. A. Lic

a ~ 2.5 x 3 cm

b ~ 8 x 10 cm

c ~ 2 x 2.5 cm

d ~ 3 x 3.5 cm

e ~ 2.5 cm x 3 cm

Moulded

Frieze SBY Type 2; fragments of a vine scroll enclosing a palmette (its small part is visible on the left hand side) and a cross; fragments of a 'string of pearls'.



### 147 [1206]

Abu Dhabi Tourism & Culture Authority collection

phot. A. Lic

4 x 5.5 cm

Moulded

Plaque SBY Type 3; two parallel lines.



### 148 [1206]

Abu Dhabi Tourism & Culture Authority collection

phot. A. Lic

3.5 x 5.5 cm

Moulded

Plaque SBY Type 3; two parallel lines.



### 149 [1206]

Abu Dhabi Tourism & Culture Authority collection

phot. A. Lic

17 x 23 cm

Moulded

Frieze SBY Type 1; two joining fragments, a vine scroll enclosing a palm leaf and a bunch of grapes, protruding edge characteristic for stuccoes Type 1.



### 150 [1207]

Abu Dhabi Tourism & Culture Authority collection

phot. A. Lic

11 x 13 cm

Moulded

Plaque SBY Type 3; joining fragments, a lower part of a cross standing on a triangular, stepped base, a leaf branching from the base, a stepped base supporting a 'pillar' composed of parallel lines.



### 151 [1208]

Abu Dhabi Tourism & Culture Authority collection

phot. A. Lic

a ~ 6 x 9 cm

b ~ 3 x 3.5 cm

Moulded

Tile SBY Type 4 (?); fragments of a palm tree and a fleur-de-lis.



### 152 [1209]

Abu Dhabi Tourism & Culture Authority collection

phot. A. Lic

12 x 16 cm

Moulded

Frieze SBY Type 1; a fragment of a vine scroll enclosing a bunch of grapes, protruding edge.



### 153 [1209]

Abu Dhabi Tourism & Culture Authority collection

phot. A. Lic

13.5 cm x 22 cm

Moulded

Frieze SBY Type 1; a fragment of a vine scroll enclosing a bunch of grapes, protruding edge.



### 154 [1209]

Abu Dhabi Tourism & Culture Authority collection

phot. A. Lic

9 x 14 cm

Moulded

Frieze SBY Type 1; a fragment of a vine scroll enclosing a palm leaf.



### 155 [1211]

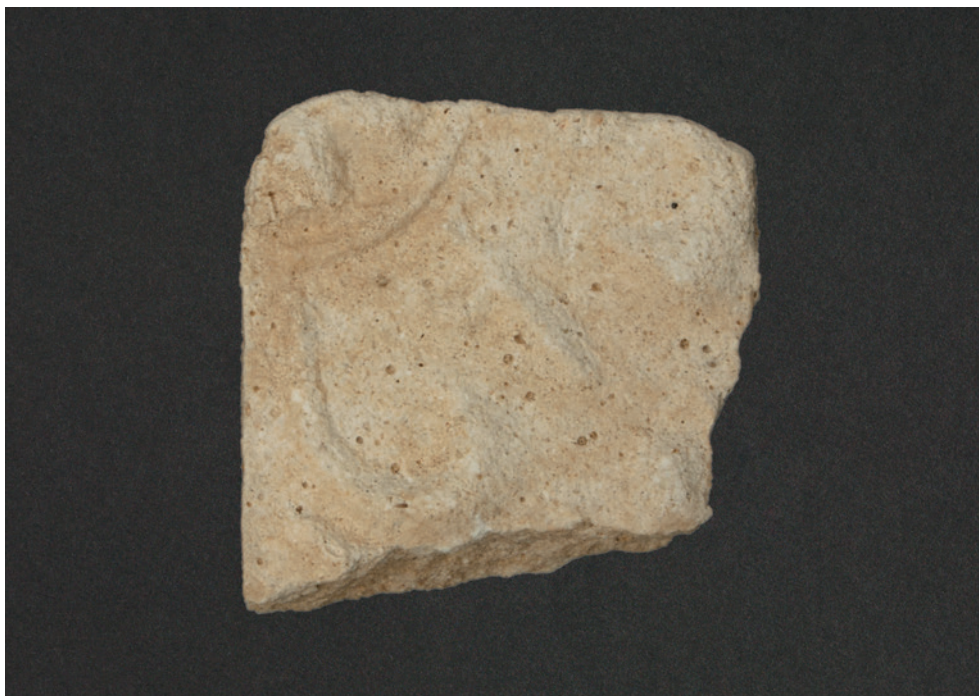
Abu Dhabi Tourism & Culture Authority collection

phot. A. Lic

~ 8 x 9 cm

Moulded

Tile SBY Type 4; fragments of palm trees, across and a fleur-de-lis.



### 156 [1212]

Abu Dhabi Tourism & Culture Authority collection

phot. A. Lic

~5 x 6 cm

Moulded

Tile SBY Type 4; fragments of a palm tree and a roundel enclosing a cross.



### 157 [1213]

Abu Dhabi Tourism & Culture Authority collection

phot. A. Lic

7.5 x 10 cm

Moulded (?)

Fragment SBY Type 6; a triangular, stepped motif.



### 158 [1214]

Abu Dhabi Tourism & Culture Authority collection

phot. A. Lic

5.5 x 6 cm

Moulded

Tile SBY Type 4; fragments of a palm tree and a cross.



### 159 [1217]

Abu Dhabi Tourism & Culture Authority collection

phot. A. Lic

~8.5 x 16 cm

Moulded

Frieze SBY Type 1; a fragment of a vine scroll enclosing a palm leaf.



### 160 [1217]

Abu Dhabi Tourism & Culture Authority collection

phot. A. Lic

~ 11.5 x 12 cm

Moulded

Frieze SBY Type 1; joining fragments, a fragment of a vine scroll enclosing a bunch of grapes, protruding edge.



## 161 [1217]

Abu Dhabi Tourism & Culture Authority collection

phot. A. Lic

Dimensions unknown

Moulded

Frieze SBY Type 1 (?); fragments of a vine scroll.



## 162 [1251]

Abu Dhabi Tourism & Culture Authority collection

phot. A. Lic

12.5 x 15 cm

Moulded

Frieze SBY Type 1; fragments of a vine scroll enclosing a pal leaf and a bunch of grapes.



### 163 [1251]

Abu Dhabi Tourism & Culture Authority collection

phot. A. Lic

~15 x 25 cm

Moulded

Frieze SBY Type 1; a fragment of a vine scroll enclosing a palm leaf and a bunch of grapes, protruding edge.



### 164 [1251]

Abu Dhabi Tourism & Culture Authority collection

phot. A. Lic

~ 10 x 14.5 cm

Moulded

Frieze SBY Type 1, a fragment of a vine scroll enclosing a bunch of grapes.



## 165 [1251]

Abu Dhabi Tourism & Culture Authority collection

phot. A. Lic

~ 4 x 7 cm

Moulded

Frieze SBY Type 1 (?); a fragment of a vine scroll (?).



## 166 [1251]

Abu Dhabi Tourism & Culture Authority collection

phot. A. Lic

17 x 19 cm

Moulded

Frieze SBY Type 1; a fragment of a vine scroll enclosing a bunch of grapes and a palm leaf, a protruding edge.



### 167 [1251]

Abu Dhabi Tourism & Culture Authority collection

phot. A. Lic

~ 4 x 6.5 cm

Moulded

Frieze SBY Type 1 (?); a fragment of a vine scroll.



### 168 [1265]

Abu Dhabi Tourism & Culture Authority collection

phot. A. Lic

9 x 12 cm

Moulded

Frieze SBY Type 2; a fragment of a vine scroll enclosing a palmette (a small fragment visible on the left hand side) and a cross, a fragment of a 'string of pearls'.



### 169 [1267]

Abu Dhabi Tourism & Culture Authority collection

phot. A. Lic

21 x 22 cm

Moulded

Frieze SBY Type 1; a fragment of a vine scroll, protruding edge.



### 170 [1267]

Abu Dhabi Tourism & Culture Authority collection

phot. A. Lic

9.5 x 18 cm

Moulded

Frieze SBY Type 1; a fragment of a vine scroll enclosing a palm leaf and a bunch of grapes.



### **171 [1371]**

Abu Dhabi Tourism & Culture Authority collection

phot. A. Lic

9.5 x 9.5 cm

Moulded

Frieze SBY Type 1, a fragment of a vine scroll enclosing a bunch of grapes.



### **172 [1372]**

Abu Dhabi Tourism & Culture Authority collection

phot. A. Lic

10 x 10 cm

Moulded

Frieze SBY Type 1; a fragment of a vine scroll enclosing a bunch of grapes.



### 173 [1373]

Abu Dhabi Tourism & Culture Authority collection

phot. A. Lic

2.5 x 4 cm

Moulded

Frieze SBY Type 4; a fragment of a cross.



### 174 [1374]

Abu Dhabi Tourism & Culture Authority collection

phot. A. Lic

5.5 x 9 cm

Moulded

Tile SBY Type 4; fragments of a tree and a cross.



### 175 [1378]

Abu Dhabi Tourism & Culture Authority collection

phot. A. Lic

7.5 x 8 cm

Moulded (?)

Fragment SBY Type 6; a triangular, stepped motif.



### 176 [1381]

Abu Dhabi Tourism & Culture Authority collection

phot. A. Lic

13 x 16 cm

Moulded

Frieze SBY Type 1; a fragment of a vine scroll enclosing a palm leaf and a bunch of grapes.



**177 [1382, 1383  
(joining fragments)]**

Abu Dhabi Tourism & Culture Authority collection

phot. A. Lic

~ 23 x 31 cm

Moulded

Frieze SBY Type 1; a fragment of a vine scroll enclosing a palm leaf and a bunch of grapes.



**178 [1383]**

Abu Dhabi Tourism & Culture Authority collection

phot. A. Lic

Moulded

Frieze SBY Type 1; a fragment of a vine scroll enclosing a palm leaf and a bunch of grapes, protruding lower edge.



### 179 [1385]

Abu Dhabi Tourism & Culture Authority collection

phot. A. Lic

14 x 23 cm

Moulded

Frieze SBY Type 1; a fragment of a vine scroll enclosing a pal leaf and a bunch of grapes, protruding lower edge.



### 180 [1386]

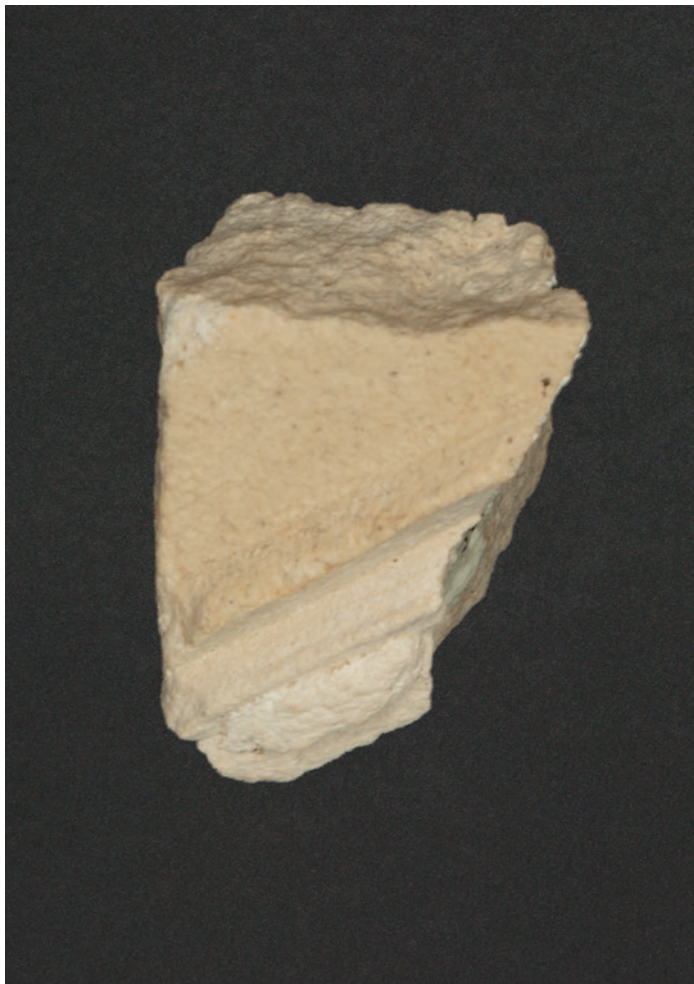
Abu Dhabi Tourism & Culture Authority collection

phot. A. Lic

4 x 5 cm

Moulded

Frieze SBY Type 2; a fragment of a vine scroll enclosing a palmette, a fragment of a 'string of pearls'.



### 181 [1388]

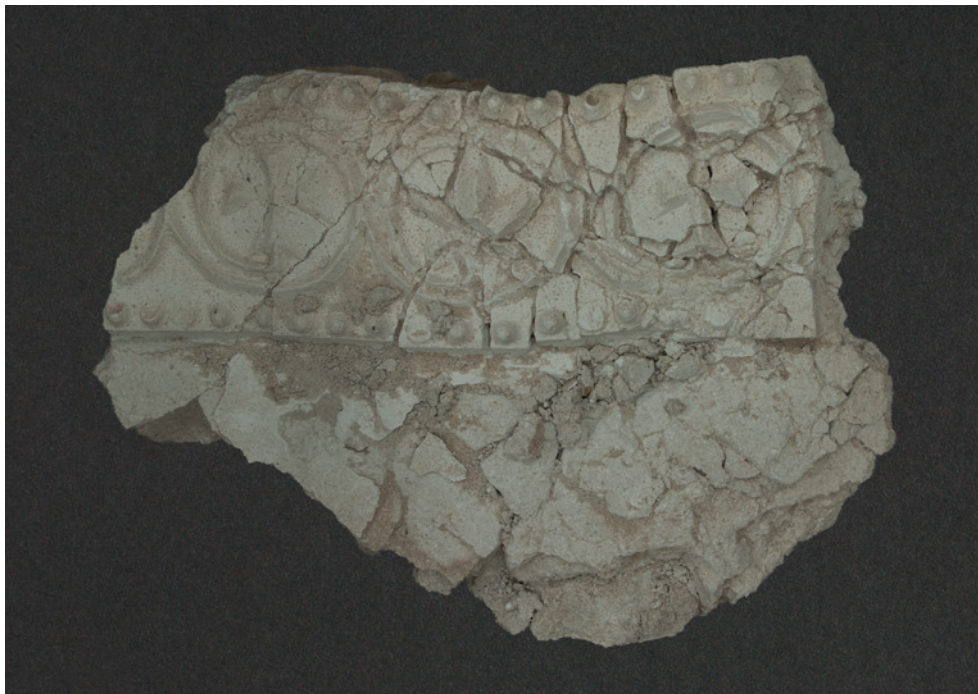
Abu Dhabi Tourism & Culture Authority collection

phot. A. Lic

3.5 x 4.5 cm

Moulded

Frieze SBY Type 3 (?); two parallel lines.



### 182 [1403]

Abu Dhabi Tourism & Culture Authority collection

phot. A. Lic

24 x 27 cm

Moulded

Frieze SBY Type 2; a fragment of a vine scroll enclosing crosses and a palmette, fragments of 'strings of pearls'.



### 183 [1404]

Abu Dhabi Tourism & Culture Authority collection

phot. A. Lic

5 x 7 cm

Moulded

Frieze SBY Type 2; a fragment of a vine scroll, fragment of a 'string of pearls'.



### 184 [1405]

Abu Dhabi Tourism & Culture Authority collection

phot. A. Lic

11 x 11.5 cm

Moulded

Tile SBY Type 4; a fragment of palm trees, fleurs-de-lis, a cross and a roundel.



### 185 [1408]

Abu Dhabi Tourism & Culture Authority collection

phot. A. Lic

16 x 27 cm

Moulded

Frieze SBY Type 2; a fragment of a vine scroll enclosing alternating palmettes and crosses; fragments of 'strings of pearls'.



### 186 [1409]

Abu Dhabi Tourism & Culture Authority collection

phot. A. Lic

19 x 41 cm

Moulded

Frieze SBY Type 1; a fragment of a vine scroll enclosing alternating palm leaves and bunches of grapes, protruding lower edge.



### 187 [1412]

Abu Dhabi Tourism & Culture Authority collection

phot. A. Lic

7 x 10.5 cm

Moulded

Frieze SBY Type 1; fragments of two square, stepped motifs.



### 188 [1448]

Abu Dhabi Tourism & Culture Authority collection

phot. A. Lic

9 x 20 cm

Moulded

Frieze SBY Type 2; a fragment of a vine scroll enclosing two crosses and a palmette, fragments of 'strings of pearls'.



## 189 [1449]

Abu Dhabi Tourism & Culture Authority collection

phot. A. Lic

8 x 8 cm

Moulded

Frieze SBY Type 2; a fragment of a vine scroll enclosing a palmette and a cross (its small part is visible on the right hand side); fragments of 'strings of pearls'.



## 190 [1570]

Abu Dhabi Tourism & Culture Authority collection

phot. A. Lic

Dimensions unknown

Moulded

Frieze SBY Type 1; fragments of a vine scroll and a bunch of grapes.



### 191 [1570]

Abu Dhabi Tourism & Culture Authority collection

phot. A. Lic

9 x 11 cm

Moulded

Frieze SBY Type 1; a fragment of a vine scroll enclosing a palm leaf.



### 192 [1570]

Abu Dhabi Tourism & Culture Authority collection

phot. A. Lic

9 x 14 cm

Moulded

Frieze SBY Type 1; a fragment of a vine scroll enclosing a bunch of grapes.



### 193 [1570]

Abu Dhabi Tourism & Culture Authority collection

phot. A. Lic

~ 8.5 x 10 cm

Moulded

Frieze SBY Type 1; a fragment of a vine scroll enclosing a bunch of grapes.



### 194 [1570]

Abu Dhabi Tourism & Culture Authority collection

phot. A. Lic

9 x 15 cm

Moulded

Frieze SBY Type 1; a fragment of a vine scroll enclosing a palm leaf; protruding lower edge.



### 195 [1570]

Abu Dhabi Tourism & Culture Authority collection

phot. A. Lic

8.5 x 12 cm

Moulded

Frieze SBY Type 1; a fragment of a vine scroll enclosing a bunch of grapes.



### 196 [1570]

Abu Dhabi Tourism & Culture Authority collection

phot. A. Lic

12 x 14 cm

Moulded

Frieze SBY Type 1; a fragment of a vine scroll enclosing a bunch of grapes, protruding lower edge.



### 197 [1571]

Abu Dhabi Tourism & Culture Authority collection

phot. A. Lic

6.5 x 7 cm

Moulded

Fragment SBY Type 3; multiplied, stepped motifs.



### 198 [1572]

Abu Dhabi Tourism & Culture Authority collection

phot. A. Lic

6 x 8 cm

Moulded

Frieze SBY Type 2; a fragment of a vine scroll enclosing a palmette, fragments of 'strings of pearls'.



### 199 [1572]

Abu Dhabi Tourism & Culture Authority collection

phot. A. Lic

4.5 x 8 cm

Moulded

Frieze SBY Type 2; a fragment of a vine scroll; fragments of 'strings of pearls'.



### 200 [1574]

Abu Dhabi Tourism & Culture Authority collection

phot. A. Lic

16 x 22 cm

Moulded

Frieze SBY Type 1; a fragment of a vine scroll enclosing a palm leaf and a bunch of grapes, protruding lower edge.



## 201 [1575]

Abu Dhabi Tourism & Culture Authority collection

phot. A. Lic

8.5 x 16 cm

Moulded

Tile SBY Type 4; palm trees, fleurs-de-lis, crosses, a fragment of a roundel.



## 202 [1576]

Abu Dhabi Tourism & Culture Authority collection

phot. A. Lic

a ~2 x 3 cm

b ~3 x 3cm

Moulded

Frieze SBY Type 1; fragments of vine scrolls, a bunch of grapes.



## 203 [1578]

Abu Dhabi Tourism & Culture Authority collection

phot. A. Lic

~ 17.5 x 25 cm

Moulded

Frieze SBY Type 1; a fragment of a vine scroll enclosing a bunch of grapes and a palm leaf, protruding lower edge.



## 204 [1580]

Abu Dhabi Tourism & Culture Authority collection

phot. A. Lic

18 x 26 cm

Moulded

Frieze SBY Type 1; fragments of a vine scroll.



## 205 [No number]

Abu Dhabi Tourism & Culture Authority collection

phot. A. Lic

~ 13.5 x 17 cm

Moulded

Tile SBY Type 4; a cross enclosed in a roundel, palm trees, crosses, fleurs-de-lis.