

***LiteBIRD* science goals and forecasts. *E*-mode anomalies**



The LiteBIRD collaboration

A.J. Banday et al.

Full author list at the end of the paper

E-mail: anthony.banday@irap.omp.eu

ABSTRACT: Various so-called anomalies have been found in both the *WMAP* and *Planck* cosmic microwave background (CMB) temperature data that exert a mild tension against the highly successful best-fit 6 parameter cosmological model, potentially providing hints of new physics to be explored. That these are real features on the sky is uncontested. However, given their modest significance, whether they are indicative of true departures from the standard cosmology or simply statistical excursions due to a mildly unusual configuration of temperature anisotropies on the sky which we refer to as the “fluke hypothesis” cannot be addressed further without new information.

No theoretical model of primordial perturbations has to date been constructed that can explain all of the temperature anomalies. Therefore, we focus in this paper on testing the fluke hypothesis, based on the partial correlation between the temperature and *E*-mode CMB polarisation signal. In particular, we compare the properties of specific statistics in polarisation, built from unconstrained realisations of the Λ CDM cosmological model as might be observed by the *LiteBIRD* satellite, with those determined from constrained simulations, where the part of the *E*-mode anisotropy correlated with temperature is constrained by observations of the latter. Specifically, we use inpainted *Planck* 2018 SMICA temperature data to constrain the *E*-mode realisations. Subsequent analysis makes use of masks defined to minimise the impact of the inpainting procedure on the *E*-mode map statistics.

We find that statistical assessments of the *E*-mode data alone do not provide any evidence for or against the fluke hypothesis. However, tests based on cross-statistical measures determined from temperature and *E* modes can allow this hypothesis to be rejected with a moderate level of probability.

KEYWORDS: CMBR polarisation, non-gaussianity

ARXIV EPRINT: [2508.16451](https://arxiv.org/abs/2508.16451)

Contents

1	Introduction	1
2	Polarisation analysis preamble	4
3	Simulations	4
4	Inpainting	6
5	Tests of non-Gaussianity: one-dimensional moments	10
6	Dipole modulation and directionality: variance asymmetry	13
7	Low-ℓ alignment	16
8	Harmonic-based estimators	20
	8.1 Even-odd asymmetry	20
	8.2 Lack of correlation	22
9	The Cold Spot and other large-scale peaks in polarisation	29
	9.1 Simulations	30
	9.2 Polarised angular profile	30
	9.3 Large-scale peak detection forecasts for <i>LiteBIRD</i>	32
10	Conclusions	33
A	Even-odd asymmetry as a lack of power of the even multipoles	36
B	Angular profile binning of peaks	36
C	Theoretical Q_{r0} angular profile	37
	The LiteBIRD collaboration	44

1 Introduction

LiteBIRD (the Lite spacecraft for the study of B -mode polarization and Inflation from cosmic background Radiation Detection) is a strategic large-class mission selected by the Japan Aerospace Exploration Agency (JAXA) to be launched in the 2030s. This work is part of a series of papers that present the science achievable by the *LiteBIRD* space mission, expanding on the overview published in ref. [1].

Observations of the cosmic microwave background (CMB) are remarkably consistent with the Λ CDM cosmological model, which is defined by only six parameters [2]. However, some features in the data are in mild tension with the best-fit model, and could hint at new physics to be explored. These features, often referred to as “anomalies”, have been found in both the *WMAP* and *Planck* temperature maps, albeit at modest levels of statistical significance (i.e.,

$2-3\sigma$), as described in refs. [3–5] and references therein. The most important anomalous statistical signatures are generally identified as: a low- ℓ power deficit (low variance); a lack of correlation on large angular scales in the angular 2-point correlation function; alignment between the quadrupole and octopole moments; a hemispherical asymmetry (or dipolar modulation) of power; a parity asymmetry defined by the spherical harmonic modes with even and odd ℓ values respectively; and an anomalous “Cold Spot” on angular scales of approximately 10° .

The simplest explanation for the anomalies, given their claimed levels of significance, is that they are simply statistical excursions, caused by mildly unusual patterns in the temperature anisotropies arising in the standard cosmological model; we refer to this as the “fluke hypothesis.” However, since the temperature fluctuations are almost cosmic-variance limited, new observations must be sought in order to assess whether this is the case or there is a more interesting explanation. Fortunately, maps of the polarised CMB anisotropies independently probe the fluctuations that source the temperature field, thus providing exactly such information, and it is expected that much progress will be possible using *LiteBIRD* data. Additional strong motivation for undertaking such studies with the *LiteBIRD* data is that the “a posteriori statistics” issue with the anomalies is avoided. Since many tests could be applied to the data to search for anomalous behaviour, we expect some outliers at the approximately 3σ level. Deciding how to interpret such levels of significance will then exhibit a degree of subjectivity. However, if a fixed set of statistical tests that indicate potential anomalies in temperature are applied to independent polarisation data, then the problem of a posteriori or data-driven choices being made in the analyses is avoided. Of course, given the modest significance of the temperature features, high significance detections of anomalies in polarisation will still prove difficult.

Indeed, no definitive evidence was found in the *Planck* 2018 polarisation data [5] for any anomalous features corresponding to those observed in the temperature data. However, the various tests of isotropy were clearly limited by the presence of instrumental noise as well as residual systematics, even if these did not dominate the signal as was the case for the 2015 data set [4]. This was clearly evident from the variation in results found with the four component separated maps studied, presumably related to their different responses to noise and systematic residuals, and an incomplete understanding of the noise properties of the data. In the case of *LiteBIRD*, the *E*-mode signal in particular is expected to be measured at close to the cosmic variance level, and the final sensitivity defined almost entirely by the sky fraction available for analysis.

However, no theoretical model of primordial perturbations has yet been constructed that can explain all of the temperature anomalies. Moreover, making inferences about the amplitude of anomalous features that might be observed in the *LiteBIRD* polarisation data based on what is seen in temperature is non-trivial. Specifically, predictions must be based on models constructed in 3D position space then propagated to spherical harmonic space. This mapping is different for temperature and polarisation.

An economical approach then, followed in this paper, is to address the key question: are the observed anomalies consistent with the fluke hypothesis, or do they signal a failure of the Λ CDM model itself? Our goal is to use CMB polarisation anisotropies to test whether

the temperature pattern is incompatible with a rare realisation of the standard cosmological model. In this approach, we accept that the Λ CDM model is correct and simply test if the statistical properties of the observed CMB temperature fluctuations, while unusual, are consistent with it. We follow the methodology outlined in ref. [6]. First, we choose a suitable estimator based on CMB polarisation and build its distribution using unconstrained Λ CDM simulations. We then compute the equivalent distribution of constrained Λ CDM polarisation simulations, where the part of the E -mode anisotropy correlated with temperature is constrained by current observations of the latter. This second distribution, which can be seen as a deformation of the one obtained with unconstrained simulations, represents what we would expect to see in polarisation if the observed temperature map is a rare but compatible Λ CDM realisation. The core idea is straightforward: if future CMB polarisation observations are found to be inconsistent with the constrained distribution, the fluke hypothesis is ruled out. Conversely, if future polarisation observations are compatible, the observed temperature pattern is consistent with the fluke hypothesis and no definitive conclusion can be drawn. Similar studies have previously been presented in refs. [7–9].

The intent of this paper is to optimise our ability to address the fluke hypothesis. Therefore, we work with simulations of the sky uncompromised by instrumental noise or residual foreground emission, and study their statistical properties over the largest sky fraction possible. Indeed, an important consideration in the search for anomalies is to ensure that the sky fraction under investigation provides a fair and unbiased sample of the CMB signal, thus minimal masking is preferred. Since many of the anomalous features seen in the CMB temperature data are on large angular scales, we generally study low-resolution simulations, such that our conclusions are not specific to *LiteBIRD* in detail. We also adopt a direct template of the CMB temperature anisotropy. The *Planck* 2018 component-separation study [10] provided four estimates of the CMB temperature anisotropy — **Commander**, **NILC**, **SEVEM**, and **SMICA** — and here we use the latter. Preliminary tests indicated that the explicit choice of template did not affect our results significantly. Interestingly, the analysis is then actually limited by the properties of that data, in particular, the impact of residual foreground emission predominantly towards the Galactic plane. Therefore, a so-called “inpainting” method is used to replace the high-foreground regions with a Gaussian constrained realisation. Given that such data are then propagated into the constrained E -mode simulations, we test which analyses are sensitive to this processing and apply suitable masks where necessary. For each applied test, we also verify that the temperature-correlated E modes generated from the **SMICA** map exhibit statistical excursions. This need not be the case, since they are produced by a scale-dependent, non-local transformation of the temperature data. Obviously, in the absence of such behaviour, a given test will have no statistical power to evaluate the fluke hypothesis.

The paper is organized as follows. Section 2 provides a brief introduction to the study of polarised CMB data. Section 3 describes the characteristics of the simulations that constitute our reference set of Gaussian sky maps, while section 4 provides a prescription for generating inpainted realisations of the temperature data based on *Planck* observations that are then used to constrain the E -mode simulations. Sections 5 through 9 address specific statistical tests of the simulated polarisation data, motivated by previously observed anomalous statistical features of the microwave sky. Finally, section 10 details the main conclusions of the paper.

2 Polarisation analysis preamble

The measured quantities describing the linear polarisation state of the CMB are the standard Q and U Stokes parameters [11]. However, since these form the components of a rank-2 polarisation tensor in a specific coordinate basis associated with the map, they are not rotationally invariant. Alternatively, a global analysis of CMB data can be undertaken using the rotationally invariant E and B modes, defined as follows.

The quantities $Q \pm iU$, defined relative to the direction vectors \hat{n} can be expanded as

$$(Q \pm iU)(\hat{n}) = \sum_{\ell=2}^{\infty} \sum_{m=-\ell}^{\ell} a_{\ell m}^{(\pm 2)} {}_{\pm 2}Y_{\ell m}(\hat{n}), \quad (2.1)$$

where ${}_{\pm 2}Y_{\ell m}(\hat{n})$ denotes the spin-weighted spherical harmonics and $a_{\ell m}^{(\pm 2)}$ are the corresponding harmonic coefficients. If we define

$$\begin{aligned} a_{\ell m}^E &= -\frac{1}{2} \left(a_{\ell m}^{(2)} + a_{\ell m}^{(-2)} \right), \\ a_{\ell m}^B &= \frac{i}{2} \left(a_{\ell m}^{(2)} - a_{\ell m}^{(-2)} \right), \end{aligned} \quad (2.2)$$

then the invariant quantities are given by

$$\begin{aligned} E(\hat{n}) &= \sum_{\ell=2}^{\infty} \sum_{m=-\ell}^{\ell} a_{\ell m}^E Y_{\ell m}(\hat{n}), \\ B(\hat{n}) &= \sum_{\ell=2}^{\infty} \sum_{m=-\ell}^{\ell} a_{\ell m}^B Y_{\ell m}(\hat{n}). \end{aligned} \quad (2.3)$$

In this paper, we focus on the E -mode signal given its partial correlation with the temperature anisotropies that have demonstrated interesting anomalous statistical features.

In addition, the quantities Q_r and U_r , corresponding to a local rotation of the Stokes parameters, are employed in section 9. In this case, a local frame is defined with respect to a reference point \hat{n}_{ref} . The new quantities are then calculated as [5]

$$\begin{pmatrix} Q_r(\hat{n}, \hat{n}_{\text{ref}}) \\ U_r(\hat{n}, \hat{n}_{\text{ref}}) \end{pmatrix} = \begin{pmatrix} -\cos(2\phi) & -\sin(2\phi) \\ \sin(2\phi) & -\cos(2\phi) \end{pmatrix} \begin{pmatrix} Q(\hat{n}) \\ U(\hat{n}) \end{pmatrix}, \quad (2.4)$$

where ϕ is the angle between the axis aligned along a meridian in the local coordinate system centred on the reference point and the great circle connecting this point to a position \hat{n} .

3 Simulations

The results presented in this paper are derived using Monte Carlo (MC) simulations of the polarised CMB sky. We make extensive use of both random isotropic (or unconstrained) realisations of a fiducial cosmological model, and constrained simulations where the temperature map is based on the *Planck* SMICA PR3 data, available on the Planck Legacy Archive (PLA¹).

¹<http://pla.esac.esa.int>

The fiducial cosmological model corresponds to the *Planck* 2018 baseline marginalised results [2], with the six Λ CDM parameters H_0 (Hubble constant), $\Omega_b h^2$ (baryon density), $\Omega_c h^2$ (dark matter density), τ (reionisation optical depth), n_s (scalar spectral index), and A_s (scalar amplitude) corresponding to values of $67.36 \text{ km s}^{-1} \text{ Mpc}^{-1}$, 0.0224, 0.1202, 0.0544, 0.9649, and 2.099×10^{-9} respectively, including cosmological lensing but no tensor perturbations, i.e., $r = 0$.

The SMICA sky map corresponds to one of the four estimates of the CMB sky derived from the component-separation algorithms applied to the *Planck* 2018 data [10]. These algorithms combine the *Planck* frequency maps to yield data with minimal Galactic foreground residuals. However, some residuals do remain, predominantly in the Galactic plane, and we make use of an inpainting technique, described in section 4, to replace all high-foreground regions with a Gaussian constrained realisation. Since this method is not deterministic, 1200 inpainted SMICA realisations are used as constraints for the E -mode simulations. For consistency, the unconstrained temperature simulations are also inpainted, although only a single inpainting realisation is used for each simulated sky.

For further consistency between the temperature simulations and data, SMICA noise realisations are added to the former before inpainting. 300 so-called FFP10 full focal-plane noise simulations that capture the complex instrumental noise properties and residual systematic effects of the *Planck* detectors are available from the PLA. These are extensions of the simulations described in ref. [12]. The noise simulations are permuted with 1200 signal realisations to generate the final simulated data set.

The inpainting of the SMICA data, and the need to treat the unconstrained simulations consistently, necessarily has implications for the corresponding E -mode signal realisations, which comprise a part that is correlated with the temperature anisotropy, and an uncorrelated part. This can be written in terms of spherical harmonic coefficients as [13]

$$a_{\ell m}^E = \frac{C_{\ell}^{TE}}{C_{\ell}^{TT}} a_{\ell m}^T + \sqrt{\frac{C_{\ell}^{TT} C_{\ell}^{EE} - (C_{\ell}^{TE})^2}{C_{\ell}^{TT}}} g_{\ell m}, \quad (3.1)$$

where the $g_{\ell m}$ are values sampled from a complex standard normal distribution and, C_{ℓ}^{TT} , C_{ℓ}^{EE} , and C_{ℓ}^{TE} are defined by the fiducial CMB power spectra. An E -mode realisation is then constructed by setting the temperature anisotropy coefficients to the values obtained from the inpainted temperature map.

Note that eq. (3.1) indicates why, in part, we use inpainted rather than masked temperature sky maps. Specifically, part of the E -mode signal is based on a non-local and scale-dependent transformation of the temperature signal, and masking may introduce artefacts.

In particular, we generate and analyse sky maps in HEALPix² format [14], with a pixel size defined by the N_{side} parameter.³ Although we anticipate that the typical CMB product from *LiteBIRD* after component separation will likely correspond to a full width at half maximum (FWHM) angular resolution of $30'$ and $N_{\text{side}} = 512$, in this work we analyse low-resolution simulations generated at $N_{\text{side}} = 64$ with a corresponding FWHM angular resolution of $160'$.

²<http://healpix.sourceforge.net>

³In HEALPix the sphere is divided into $12 N_{\text{side}}^2$ equal area pixels. At $N_{\text{side}} = (512, 64)$, the mean pixel size is $(6.9', 55')$.

Since the **SMICA** sky map and FFP10 noise simulations are provided at high resolution, they are first degraded to lower resolution as follows. The full-sky maps are decomposed into spherical harmonics at the input **HEALPix** resolution. These coefficients are then effectively convolved to the new resolution by rescaling them using the appropriate ratio of output and input beam and pixel window functions, then the modified coefficients are used to synthesise a map directly at the output **HEALPix** resolution. Section 5 also describes a study of lower resolution simulations and data at $N_{\text{side}} \in \{8, 16, 32\}$ with a corresponding FWHM angular resolution of $\{1280', 640', 320'\}$, respectively, generated following this approach. These N_{side} and FWHM choices correspond to those adopted for low-resolution studies in ref. [5]. Exceptionally, the analyses presented in section 9 need to be undertaken at a higher resolution, and independently generated simulations are utilised, see section 9.1.

4 Inpainting

As noted previously, we use the *Planck* **SMICA** data as a template for the CMB temperature field, but since highly foreground-contaminated regions that are usually masked for analysis are present, and we require a full sky temperature map to constrain the E -mode polarisation simulations, an inpainting approach, **CMB-PAInT** [15], is applied to replace the masked areas by a Gaussian constrained realisation (GCR). In particular, masked pixels are filled by sampling from a conditional probability distribution defined by a fiducial sky model and the values of the unmasked pixels.

The *Planck* 2018 component-separation study [10] defined a common mask for the analysis of the four estimates of the CMB temperature anisotropy (**Commander**, **NILC**, **SEVEM**, and **SMICA**) at $N_{\text{side}} = 2048$ and $5'$ resolution. Lower resolution versions were generated in a conservative manner by appropriately smoothing, degrading, and thresholding the mask. We consider the $N_{\text{side}} = 64$ common mask as one option to mask the low resolution **SMICA** data before inpainting. However, since the full-sky information after inpainting will depend on the mask, it is potentially advantageous to consider one that retains a larger sky fraction. An inpainting mask was also defined in ref. [10], but not rigorously derived and the resulting inpainted data intended only for visualisation purposes. Since the GCR approach is very sensitive to any mismatch between the fiducial model and the values of the unmasked pixels, and given the possibility that residual foregrounds are still present in the data when masked on such a small sky fraction, a dedicated low-resolution inpainting mask is derived here based on the four *Planck* 2018 component-separated maps.

Initially, for each of the component-separated temperature maps at high resolution, the best-fit dipole and monopole computed when applying the original inpainting mask is removed. Then, following the methodology used to define the common mask at high resolution, the four maps are smoothed to $80'$ resolution and the standard deviation is computed for each pixel. Figure 1 shows the standard deviation map. The original *Planck* 2018 inpainting mask is then extended by rejecting all pixels with a standard deviation value larger than $20 \mu\text{K}$. This is then smoothed to an effective resolution of $160'$, and an $N_{\text{side}} = 64$ mask generated by applying a threshold of 0.9, such that low-resolution pixels below this value are rejected, and the remainder reset to unity, resulting in a binary mask with 93.9% usable sky coverage. Hereafter, this is referred to as the inpainting mask.

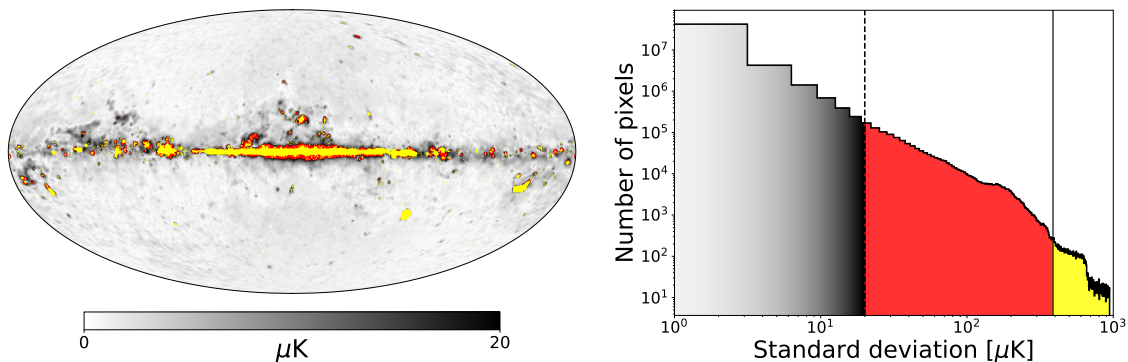


Figure 1. *Left:* map of the standard deviation per pixel determined from the four component-separation methods after monopole and dipole subtraction and smoothing to $80'$ resolution. The yellow area corresponds to the original inpainting mask, while the red region shows the extension defined by applying a threshold of $20 \mu\text{K}$. *Right:* histogram of the standard deviation map. The solid black vertical line indicates the $380 \mu\text{K}$ threshold defining the original *Planck* 2018 inpainting mask, while the black dashed vertical line corresponds to the $20 \mu\text{K}$ threshold defining the inpainting mask used here. The same colours from the left panel are used to identify the original *Planck* 2018 inpainting mask and the extended version. The region below the $20 \mu\text{K}$ threshold corresponds to the final unmasked sky fraction of 96.9%.

Lower resolution common masks at $N_{\text{side}} = \{8, 16, 32, 64\}$ are derived similarly, after smoothing the original common mask at $N_{\text{side}} = 2048$ to an effective resolution of $\text{FWHM} = \{1280', 640', 320', 160'\}$ respectively, then applying a 0.9 threshold to allow the creation of a binary mask. The resulting usable sky coverage at each resolution is $f_{\text{sky}} = \{55.2\%, 64.5\%, 68.8\%, 71.3\%\}$.

The SMICA data are then inpainted at $N_{\text{side}} = 64$ using two different masks, the *Planck* common mask and the inpainting mask described above, shown in figure 2. Since the inpainting process is stochastic, 1200 realisations are generated and used to constrain E -mode simulations. Figure 3 presents one inpainted realisation of the data for each mask. Note that, to be fully consistent with this processing, the unconstrained simulations also utilise inpainted realisations of temperature, although only one per simulated sky. The data and simulations at lower resolutions are directly inpainted at these resolutions using the appropriate common masks. No analyses were undertaken with lower resolution inpainting masks.

In the analyses that follow, we remain cognisant of the fact that inpainting is not a remedy for contaminated data, and that the resulting full-sky maps are dependent on method assumptions and the applied mask. Under the fluke hypothesis, the CMB temperature sky is considered to be consistent with the ΛCDM cosmological model. However, it is statistically unusual, so that when the inpainted regions are filled with values from an arbitrary realisation of the standard cosmological model, the process could potentially dilute the significance of anomalies computed from full sky data. We therefore test whether the full sky inpainted SMICA temperature maps, and the temperature-correlated part of the E -mode data derived therefrom, are anomalous on the full sky, and otherwise apply appropriate masking. In fact, we find that only the alignment statistic presented in section 7 is sufficiently insensitive to the inpainting process to allow full sky analysis. This is consistent with previous studies

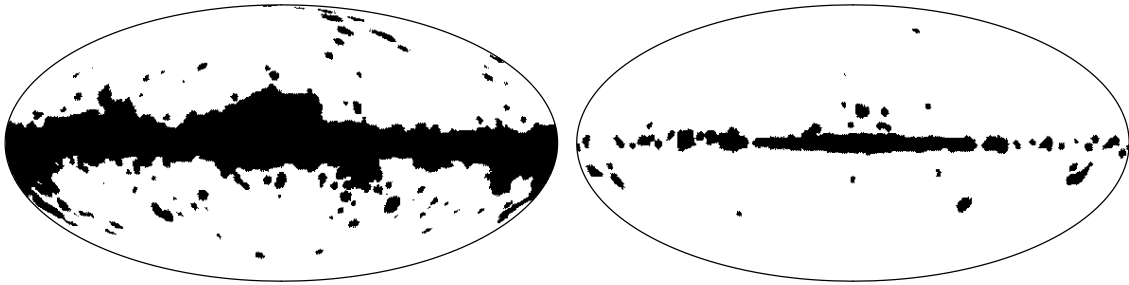


Figure 2. Masks used to inpaint the *Planck* PR3 SMICA data at $N_{\text{side}} = 64$. *Left*: common confidence mask for temperature. *Right*: inpainting mask for temperature. Both are downgraded to $N_{\text{side}} = 64$, leaving 71.3% and 93.9% of the sky available for analysis, respectively.

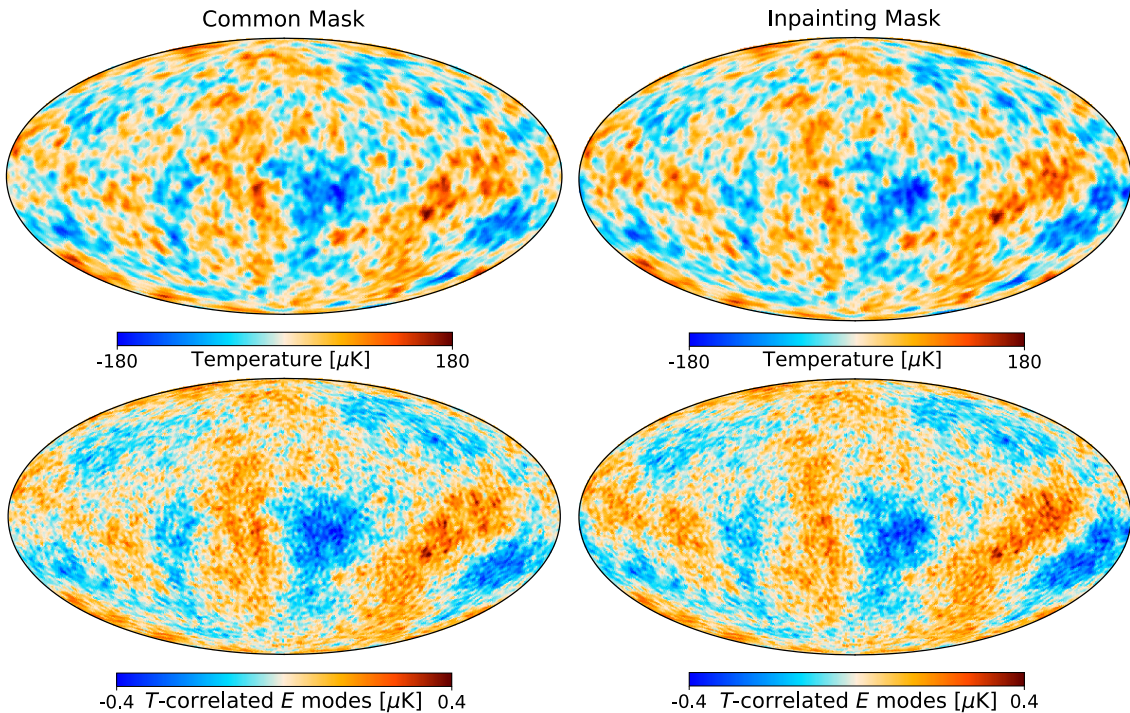


Figure 3. *Top*: example realisations of the SMICA temperature data inpainted on the common and inpainting masks. *Bottom*: the corresponding temperature-correlated part of the E -mode sky map.

using this statistic that have applied inpainting methods of various types to different sky cuts [3, 16, 17]. It should also be noted that some anomalies become increasingly significant with decreasing sky coverage, and in such cases the use of masks is again preferred.

We therefore derive masks for the analysis of the E -mode sky maps by consideration of the properties of the temperature-correlated part of the polarised signal in our 1200 unconstrained simulations. Specifically, we determine the difference between the E -mode polarisation map constrained to the original and inpainted versions of the temperature sky for each realisation, $\Delta_i(\hat{n}) = E_{\text{org},i}(\hat{n}) - E_{\text{inp},i}(\hat{n})$, then define the dispersion introduced by the inpainting as

$$\delta E(\hat{n}) = \sqrt{\frac{\sum_i (\Delta_i(\hat{n}) - \bar{\Delta}(\hat{n}))^2}{\sum_i (E_{\text{org},i}(\hat{n}) - \bar{E}_{\text{org}}(\hat{n}))^2}}. \quad (4.1)$$

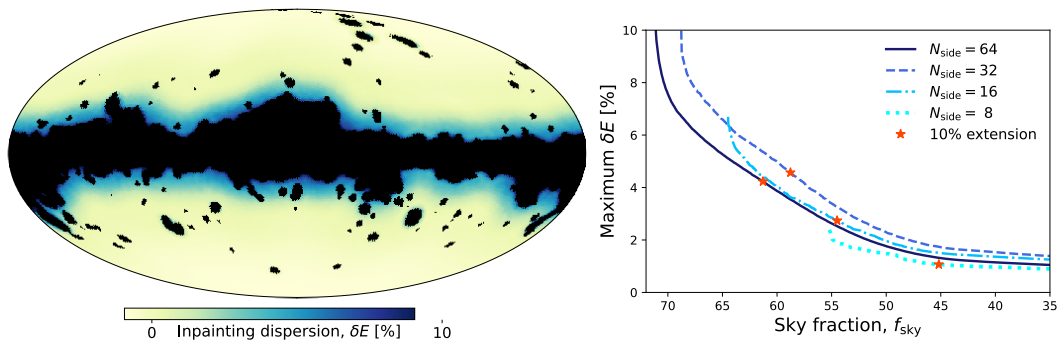


Figure 4. Extension of *Planck*'s temperature common mask to *E*-mode polarisation. *Left*: dispersion that the inpainting of $N_{\text{side}} = 64$ temperature maps introduces on *E*-mode maps through the *TE* correlation. *Right*: maximum dispersion as a function of the sky coverage allowed by *Planck*'s temperature common mask at different resolutions. In this work, we define *E*-mode masks by reducing by 10% the sky coverage of the initial temperature mask. Pixels with δE above that threshold will be masked.

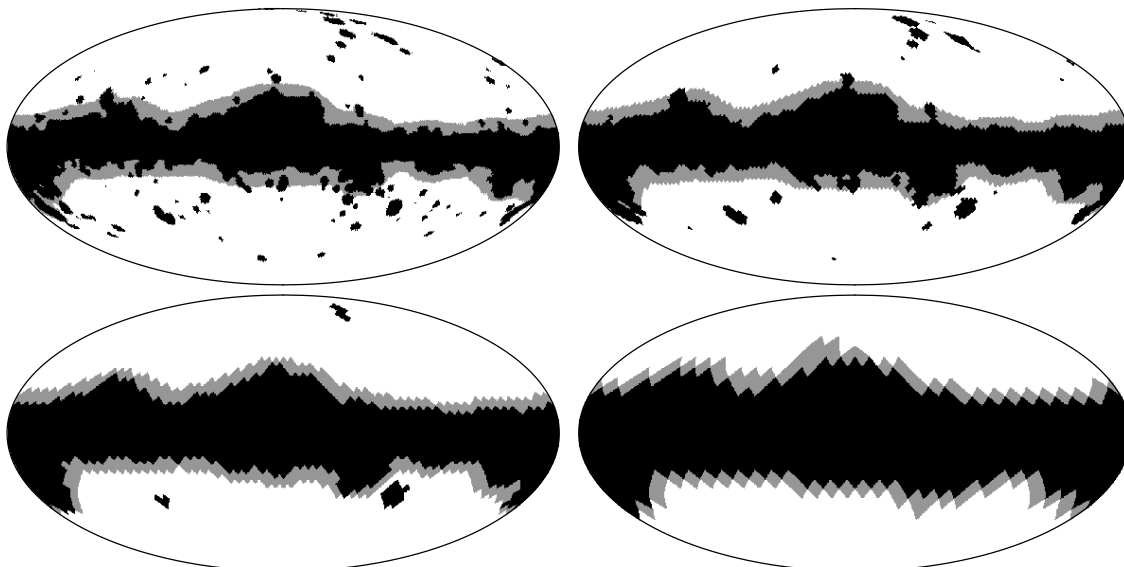


Figure 5. *Planck* common temperature mask (black) and its extension to *E*-mode polarisation (grey). From left to right, top to bottom, we show $N_{\text{side}} = 64, 32, 16, 8$ resolutions. The corresponding sky fractions are, respectively, $f_{\text{sky}} = 71.3\%, 68.8\%, 64.5\%, 55.2\%$ for temperature and $f_{\text{sky}} = 61.3\%, 58.8\%, 54.5\%, 45.2\%$ for polarisation.

Figure 4 shows the δE dispersion outside the common mask at $N_{\text{side}} = 64$ resolution. The common mask is then extended by masking an additional 10% fraction of the pixels with the largest δE . We adopt a 10% extension of the temperature mask as a compromise between preserving the anomalous nature of the SMICA temperature data and retaining sufficient sky coverage. The *E*-mode common masks at $N_{\text{side}} = 8, 16, 32, 64$ are shown in figure 5. The same procedure is applied to produce the *E*-mode version of the inpainting mask at $N_{\text{side}} = 64$ resolution, shown in figure 6.

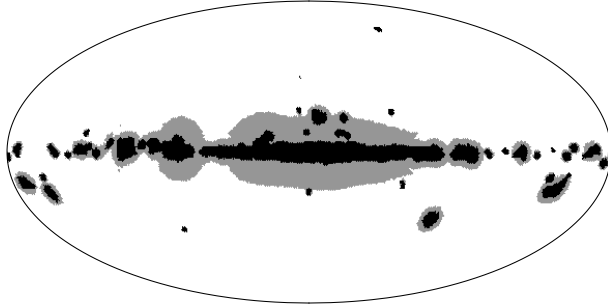


Figure 6. Inpainting temperature mask (black) and its extension to E -mode polarisation (grey) at $N_{\text{side}} = 64$ resolution. The corresponding sky fractions are $f_{\text{sky}} = 93.9\%$ for temperature and $f_{\text{sky}} = 83.9\%$ for polarisation.

5 Tests of non-Gaussianity: one-dimensional moments

The standard cosmological model predicts that an early phase of accelerated expansion gave rise to density perturbations distributed as a statistically homogeneous and isotropic Gaussian random field. The same statistical properties were imprinted on the primordial CMB according to linear theory. In this section, we look for signs of non-Gaussianity and deviations from Λ CDM in the anisotropies of the E -mode polarisation using estimators of its second-, third-, and fourth-order moments.

We use the following definitions for the variance, skewness, and kurtosis of any w, x, y, z variables:

$$\sigma_{xy}^2 = \frac{1}{N} \sum_i (x_i - \bar{x})(y_i - \bar{y}); \quad (5.1)$$

$$S_{xyz} = \frac{1}{N} (\sigma_{xx}\sigma_{yy}\sigma_{zz})^{-1} \sum_i (x_i - \bar{x})(y_i - \bar{y})(z_i - \bar{z}); \quad (5.2)$$

$$k_{wxyz} = \frac{1}{N} (\sigma_{ww}\sigma_{xx}\sigma_{yy}\sigma_{zz})^{-1} \sum_i (w_i - \bar{w})(x_i - \bar{x})(y_i - \bar{y})(z_i - \bar{z}). \quad (5.3)$$

Here $\bar{x} = N^{-1} \sum_i x_i$. A normal distribution has null skewness according to eq. (5.2). Eq. (5.3) describes the standardised fourth-order moment, for which a normal distribution would give $k = 3$. However, for a Gaussian field as strongly correlated as the CMB, a very large number of samples is needed to overcome the correlation between second- and fourth-order moments and recover this value. Such an ergodicity condition is not fully satisfied with the reduced number of pixels contained in any of the low-resolution maps studied in this section. Therefore, we de-bias our kurtosis statistic by subtracting the average value determined from the unconstrained Λ CDM realisations,

$$K_{wxyz} = k_{wxyz} - \langle k_{wxyz} \rangle_{\text{unconstrained}}. \quad (5.4)$$

Analyses of *WMAP* [18, 19] and *Planck* [3–5] temperature data report an anomalously low variance as compared to Λ CDM at larger angular scales. Thus, we perform a multi-resolution analysis of the **SMICA**-constrained simulations to progressively isolate the effect of the lack of power observed at the lowest multipoles. Moreover, previous work has shown that this

anomalous behaviour is very mask dependent, and increases in significance with decreasing sky fraction [4, 19, 20].⁴ Therefore we mask the E -mode maps before calculating their real-space n -order moments to ensure that the anomalous nature of the SMICA temperature anisotropies is retained in the correlated part of the E -mode anisotropies. For that purpose, we extend the *Planck* common mask defined in temperature following the procedure described in section 4. When analysed with a 10% extension of the common mask, the temperature-correlated part of the E -mode maps constrained to the inpainted SMICA temperature data show an anomalously low variance at a $\geq 2.4\sigma$ level for all resolutions.

In figure 7, we compare the distribution of the n -order moments from unconstrained and constrained simulations. The left panel shows the results obtained at $N_{\text{side}} = 64$ resolution, while the right panel extends the results to lower resolutions. As the top panel of figure 7 shows, the pull towards lower σ_{EE}^2 values that SMICA's low variance in temperature induces through the TE correlation is not enough to distinguish between constrained and unconstrained simulations: for all of the resolutions considered, there is no significant difference between the variances of constrained and unconstrained simulations. Therefore, in the context of our null hypothesis, that the fluke hypothesis is correct, E -mode anisotropies alone do not have enough sensitivity to either confirm or reject it. Conversely, finding an anomalously low or high E -mode variance in *LiteBIRD* data would provide independent evidence against Λ CDM, since the anomalously low variance found in temperature does not significantly influence the statistics of E -mode anisotropies. The skewness (central panel) and kurtosis (bottom panel) distributions of constrained simulations do not show any anomalous behaviour when compared to that of unconstrained realisations.

We can also perform a joint analysis of temperature and E -mode polarisation. In this case, we apply the 10% extension of the common mask to both T and E maps. Figure 8 shows the σ_{TE}^2 covariance obtained from constrained and unconstrained simulations at different resolutions. Now that temperature anisotropies are explicitly considered in the statistics, the anomalous properties of the SMICA temperature data have an appreciable impact on the distribution of recovered values. Specifically, the low variance of the temperature anisotropy pulls the TE covariance of constrained realisations towards lower values and reduces the width of the distribution in comparison to that of unconstrained simulations. As a result, at a resolution of $N_{\text{side}} = 64$, finding a TE covariance above $4.62 \mu\text{K}^2$ would allow us to reject the fluke hypothesis at a 99% confidence level (or greater) with a probability to exceed (PTE) of 48.7% (or lower). A similar 46 to 51% fraction of unconstrained simulations is found to have a larger TE covariance than 99% of constrained realisation for all resolutions. Therefore, there is a limited range of σ_{TE}^2 values in which future E -mode measurements will be compatible with *Planck* temperature data.

Similarly, higher-order moments combining temperature and E -mode polarisation provide moderate sensitivity to ruling out the fluke hypothesis, as shown in figure 9 for the different permutations of skewness and kurtosis statistics. In particular, the sensitivity to the fluke hypothesis of the K_{TTTE} , K_{TTEE} , and K_{TEEE} permutations of the fourth-order moment is, qualitatively, comparable to that of σ_{TE}^2 , with constrained realisations favouring negative

⁴As a reference, we find that the significance of the low-variance anomaly decreases, with a p -value of 1.75% increasing to 8.42% and 11.42% when the SMICA temperature map at $N_{\text{side}} = 64$ is analysed with, respectively, the *Planck* common mask, our inpainting mask, and the original SMICA inpainting mask from ref. [10].

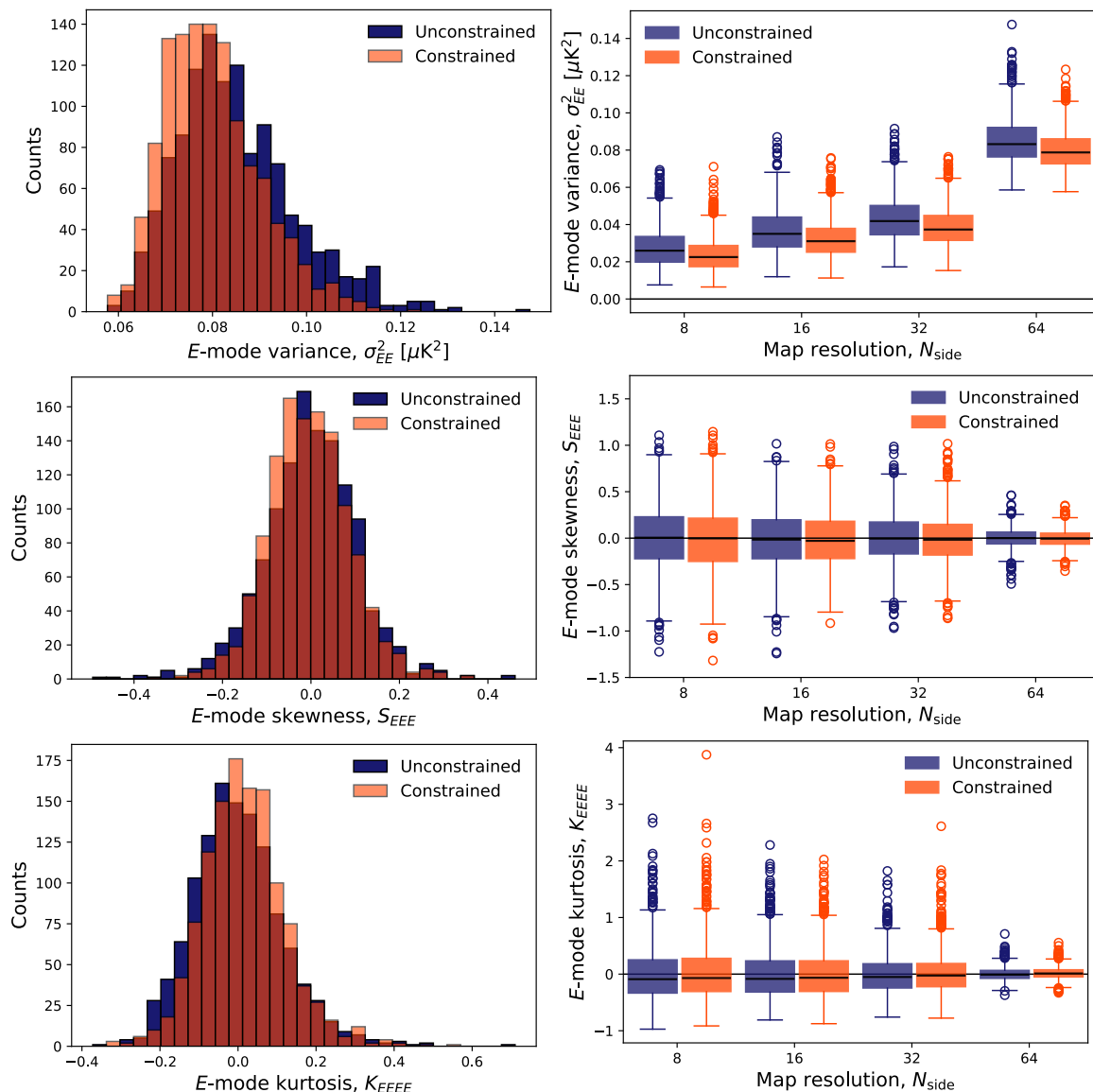


Figure 7. Distribution of the variance (top), skewness (centre), and kurtosis (bottom) of E -mode maps from constrained (orange) and unconstrained (blue) simulations after masking with the E -mode common mask, with the overlap shown in red. *Left:* distribution of n -order moments from simulations at $N_{\text{side}} = 64$ resolution. *Right:* box-and-whisker plots comparing the distribution of moments at different resolutions. In these plots, boxes encompass the interquartile range $\text{IQR} = Q_{0.75} - Q_{0.25}$, with a solid horizontal line to indicate the median ($Q_{0.50}$), and whiskers extending to 1.5 IQR. Outliers beyond that range are represented by open circles.

values. This suggests that, compared to the unconstrained pure Λ CDM simulations, SMICA-constrained realisations have fewer and less extreme outliers. In comparison, the S_{TTE} and S_{TEE} skewness permutations have less statistical power to rule out the fluke hypothesis. Nevertheless, the general behaviour is consistent with the kurtosis statistic: the presence of fewer and less extreme outliers in constrained realisations compared to Λ CDM simulations leads to a more symmetric distribution of values, with the skewness closer to zero.

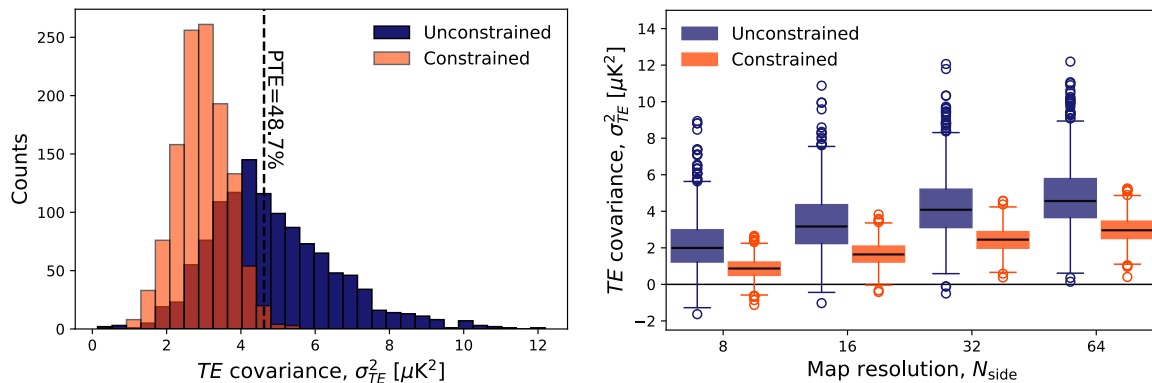


Figure 8. As figure 7, but for the TE covariance. The black dashed vertical line in the left panel indicates the value for which only 1% of the constrained realisations and 48.7% of the unconstrained realisations have a larger TE covariance. Finding $\sigma_{TE}^2 > 4.62 \mu\text{K}^2$ would allow us to reject the fluke hypothesis at a 99% confidence level or greater.

These results afford evidence that a joint analysis of temperature and E -mode polarisation improves the power to reject the fluke hypothesis. Sensitivity to the fluke hypothesis could be maximised through a linear discriminant analysis combining different permutations of temperature and E -mode polarisation n th-order moments, a possibility that we leave for future work.

6 Dipole modulation and directionality: variance asymmetry

A hemispherical asymmetry, or dipolar modulation, of power was first discovered in the *WMAP* first-year temperature data in refs. [21–23]. This anomaly, which indicates a deviation from the statistical isotropy of the standard cosmological model, was later confirmed through analyses of *Planck* temperature data [3–5]. In particular, several methods that are sensitive to either the amplitude or directionality of the modulation, or both, have been applied to *Planck* temperature data [4, 5], yielding results consistent with a modulation of power of around 7% between two hemispheres defined by a preferred direction $(l, b) = (209^\circ, -15^\circ)$ and extending over scales up to $\ell_{\text{max}} \approx 60$ with a significance approaching 3σ . However, note that, in the absence of a theoretical model, there are debates on how to include corrections for a posteriori effects, as discussed, for example, in refs. [4, 24]. The study was then extended to *Planck* polarisation data in ref. [5], and hints of an alignment between the preferred dipole modulation directions of the temperature and E -mode maps were found at modest significance. Recently, similar results have been determined using the latest *Planck* PR4 data set [25]. However, it was apparent that the various tests of isotropy applied to polarisation data were still limited by residual systematics.

Here, to test the fluke hypothesis, we will focus on a test sensitive to the dipolar modulation amplitude. In particular, we will look for a dipolar modulation of the pixel-to-pixel variance of the E -mode map, adopting the methodology presented in refs. [4, 5, 26]. Following this approach, a local-variance map is built by computing the variance of those pixels in a map of resolution N_{side} that fall within discs of a given angular radius R , the centres of which are

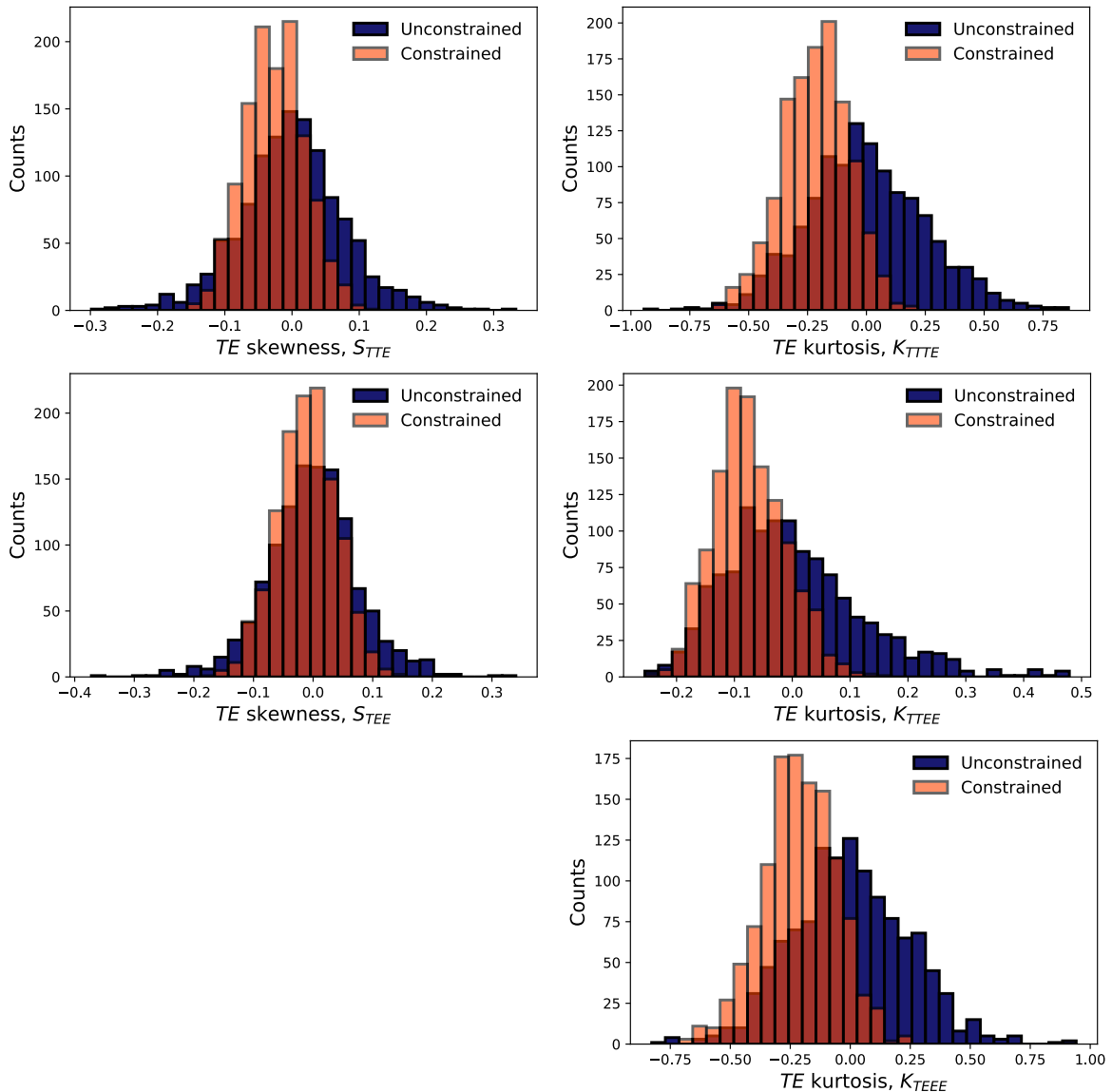


Figure 9. Skewness (left) and kurtosis (right) of different permutations of temperature and E -mode polarisation maps from constrained (orange) and unconstrained (blue) simulations at $N_{\text{side}} = 64$ resolution after masking with the E -mode common mask, with the overlap shown in red.

defined to be the pixel centroids of a lower resolution, N'_{side} , map. The dipolar modulation is then characterised by fitting a dipole, \vec{p} , to the local-variance map, $d(\hat{n})$, from a weighted χ^2 ,

$$\chi^2 = \sum_{\hat{n}} \frac{[(d(\hat{n}) - \bar{d}(\hat{n})) - p_0 - \hat{n} \cdot \vec{p}]^2}{\sigma^2(\hat{n})}, \quad (6.1)$$

where $\bar{d}(\hat{n})$ and $\sigma(\hat{n})$ are the mean and standard deviation of local-variance maps computed from random isotropic simulations, respectively. The best-fit value for the monopole (p_0) and dipole components (p_x, p_y, p_z) are calculated by minimising $-2 \ln \mathcal{L} = \chi^2$. Note that the amplitude of this dipole, $P = |\vec{p}|$, is a positive definite quantity, and, despite being proportional to it, is not a direct measurement of the amplitude of the dipolar modulation.

We analyse the unconstrained and constrained simulation sets described in section 3, specifically those where the temperature data are inpainted on the inpainting mask. For this analysis, we work at resolutions $N_{\text{side}} = 64$ and $N'_{\text{side}} = 16$, and adopt $R = 6^\circ$ discs as a compromise between the higher sensitivity to the dipole amplitude seen for smaller radii in ref. [5], and having at least 100 pixels per disc to determine the variance effectively.

Initially, we consider the temperature-correlated part of the E -mode maps to determine whether the SMICA-constrained realisations are anomalous. We find that, for a full sky analysis, the significance of the anomaly is diluted due to the inpainting effect. Specifically, if we define a p -value as the fraction of unconstrained realisations with dipole amplitudes equal to or larger than those observed in the constrained realisations, we find a value of around 3.7%. Therefore, we repeat the analysis after applying the E -mode inpainting mask (see figure 6). Note that the estimator is also slightly modified in this case such that only those discs in which more than 10% of the selected pixels are unmasked are included when computing eq. (6.1). The corresponding p -value is now reduced to 0.8%. We then proceed to analyse maps of the full E -mode signal. The results can be seen in figure 10, where P_{EE} refers to the amplitude of the dipole in the local variance map of the E -modes.

The distributions of the dipole amplitude (top left panel) derived from the constrained and unconstrained realisations are essentially indiscernible. Therefore, the dipolar modulation found in the SMICA map is not sufficient to induce a modulation of measurable amplitude in the E -mode polarisation signal. Nevertheless, in comparison with the random realisations, constrained simulations do show a modest excess of dipoles pointing roughly in the same direction as the modulation in the SMICA temperature data (bottom panels). This small alignment is better seen in the distribution of the cosine of the angle $\alpha_{(T,E)}$ between the dipoles found in the temperature and E -mode local-variance maps for each realisation (top right panel).

A possible approach to enhance the sensitivity to very weak modulations would be to exploit the TE correlation. We therefore repeat the previous analysis, and determine the best-fit dipoles to maps of the local TE covariance. The results are shown in figure 11, where P_{TE} refers to the amplitude of the dipole in the local covariance maps of the T and E modes.

The distribution of constrained realisations is now seen to peak at a slightly higher amplitude than that of the unconstrained realisations (top left panel), although the shift remains too small to claim a clear distinction between them. In particular, only 5.6% of the unconstrained simulations are above 99% of the constrained ones. The dipoles fitted to the TE local-covariance of the constrained realisations are clearly concentrated around the direction of the modulation in SMICA temperature (bottom panels). However, random realisations also indicate a substantial alignment between the dipoles found in temperature and in the TE covariance (top right panel). Hence, finding a good alignment, $\cos \alpha_{(T,TE)} \approx 1$, between the preferred directions of the SMICA temperature and *LiteBIRD* E -mode polarisation maps is not sufficient to test the fluke hypothesis. However, we note that only 1% of the constrained realisations yield $\cos \alpha_{(T,TE)} < -0.23$, whereas 13.6% of the unconstrained simulations fall below this threshold. Therefore, if $\cos \alpha_{(T,TE)} < -0.23$, then we can reject the fluke hypothesis at 99% confidence level with a probability of 13.6%. This defines the lower tail probability (LTP), indicated in the top right panel of the figure.

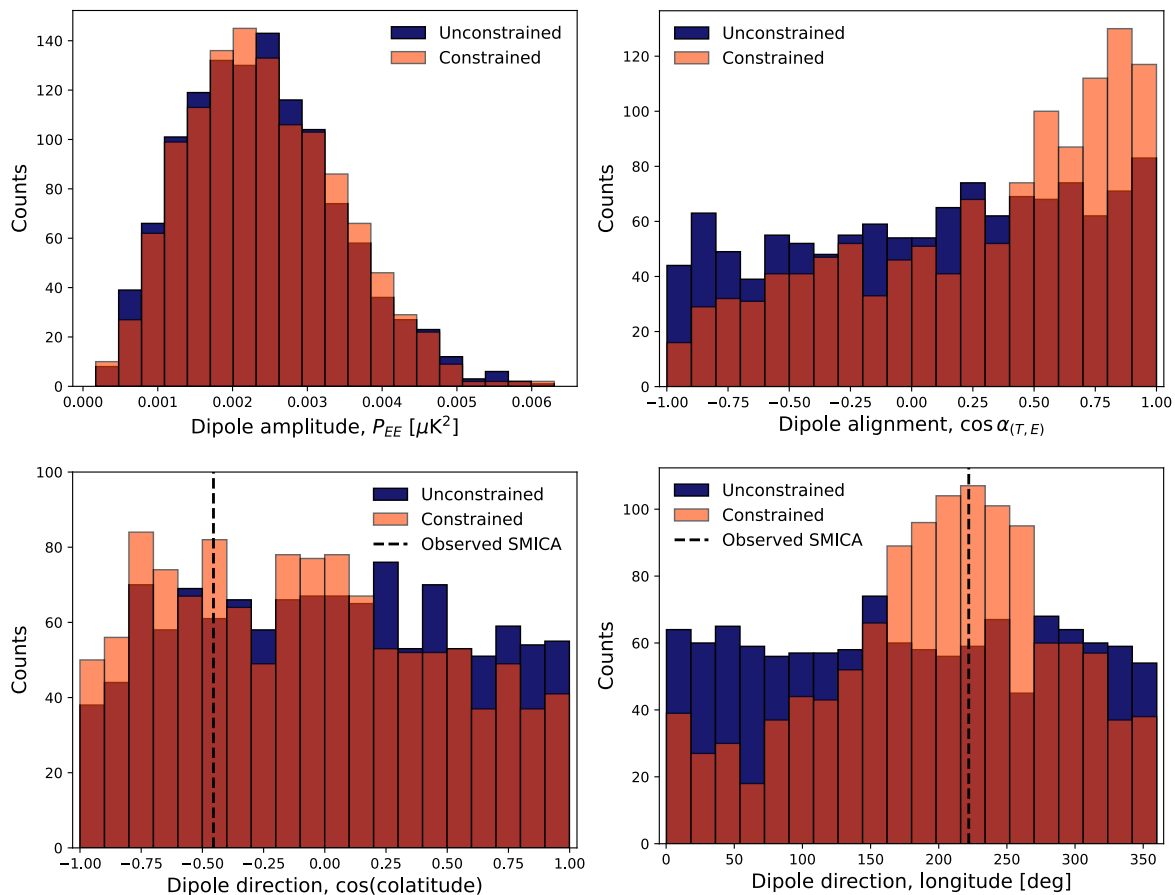


Figure 10. Histograms of the distributions of the dipole amplitude and direction obtained when fitting a dipole to maps of the local E -mode variance for unconstrained (blue) or constrained (orange) realisations, with the overlap shown in red. The E -mode inpainting mask, shown in grey in figure 6, is used in the analysis. For each realisation, $\alpha_{(T,E)}$ is the angle between the dipoles found in the temperature and E -mode local-variance maps. In the bottom panels, the direction of the dipolar modulation found in the SMICA temperature map using the inpainting mask is indicated with a vertical black dashed line.

We conclude that, since the temperature dipolar modulation found in the SMICA data is insufficient to result in a statistically significant detection of modulation in the E -mode polarisation, any statistically significant dipolar modulation found therein by *LiteBIRD*, with an amplitude exceeding $0.005 \mu\text{K}^2$ would be independent evidence against the ΛCDM cosmological model, whereas significant anti-alignment of the dipolar modulation directions for temperature and TE would argue against the fluke hypothesis.

7 Low- ℓ alignment

A significant alignment between the orientation of the quadrupole ($\ell = 2$) and octopole ($\ell = 3$) of the *WMAP* first year temperature data, unexpected if the CMB is an isotropic random field, was first noted by refs. [27–29]. The presence of this feature of the CMB sky in the *Planck* first year data was later confirmed in refs. [3, 17].

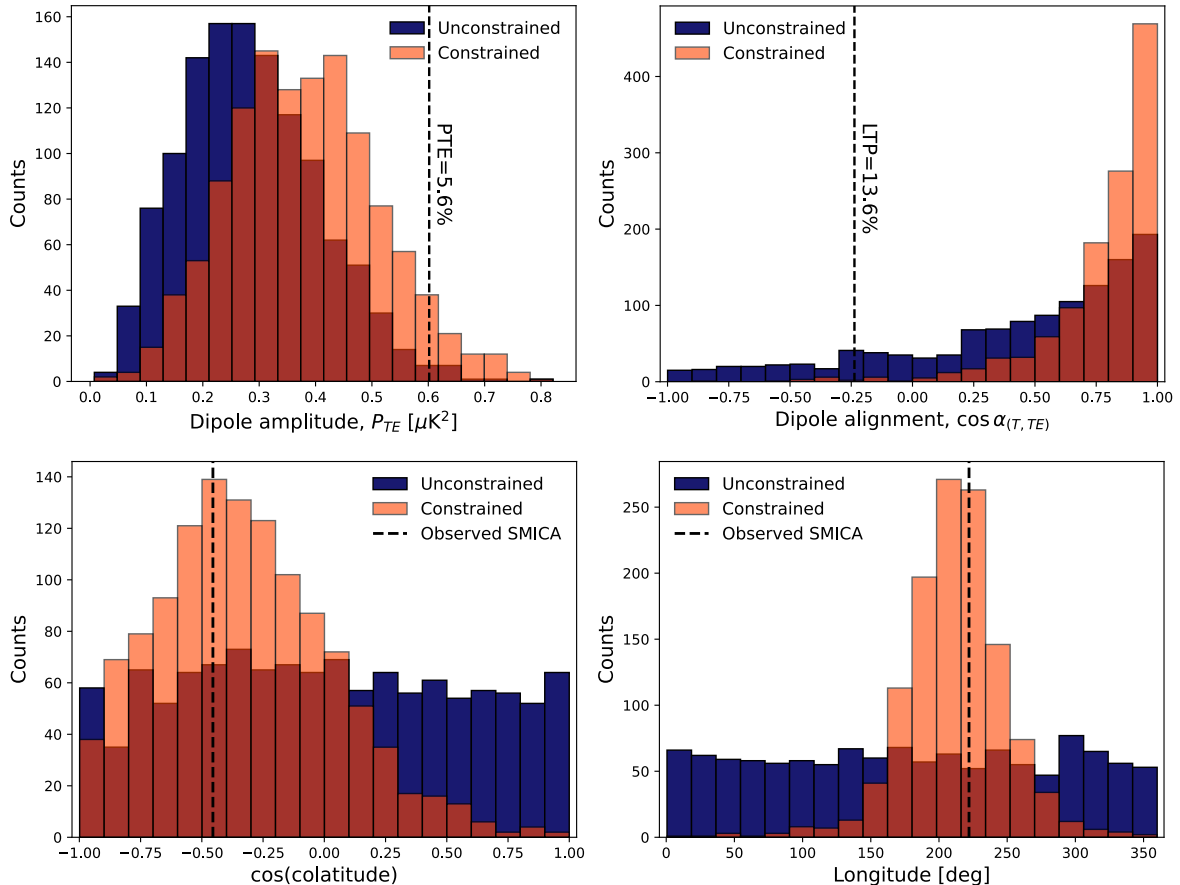


Figure 11. As in figure 10, but for the local TE covariance. In the top left panel, the vertical black dashed line indicates the value above which only 1% of the unconstrained realisations and 5.6% of the constrained realisations have a larger dipole amplitude in the local TE covariance. In the top right panel, the vertical black dashed line indicates the value below which only 1% of the constrained realisations and 13.6% of the unconstrained realisations show less alignment between the dipolar modulation directions for temperature and TE . A value of $\cos \alpha_{(T,TE)} < -0.23$ would reject the fluke hypothesis at a 99% confidence level or greater, with a probability of 13.6%. The vertical black dashed lines in the bottom panels indicate the same quantity as those in figure 10.

By considering the spherical harmonic coefficients, $a_{\ell m}^X(\hat{n})$, of an X -mode CMB map, where X corresponds to either T , E or B , in a rotated coordinate system such that the z -axis lies in the \hat{n} -direction, ref. [28] determines a preferred axis when maximising the angular momentum dispersion for a given ℓ

$$\sum_m m^2 |a_{\ell m}^X(\hat{n})|^2. \quad (7.1)$$

Note that this quantity does not distinguish between \hat{n} and $-\hat{n}$. The angular separation between the preferred axes for the temperature quadrupole, \hat{n}_2^T , and octopole, \hat{n}_3^T , is then determined from the quantity $|\hat{n}_2^T \cdot \hat{n}_3^T|$. We refer to this as the alignment statistic.

Here, we compare the alignment statistics for all permutations of the temperature and E -mode quadrupole and octopole data drawn from two sets of 1200 unconstrained or constrained simulations, as described in section 3. In order to examine whether the inpainting process

biases the results of a full sky analysis, we test whether each of the 1200 inpainted SMICA temperature realisations are anomalous by defining a p -value with reference to the unpainted unconstrained simulations. This is defined as the fraction of unconstrained simulations with an alignment statistic (angular separation) at least as large (small) as the unpainted SMICA realisation. For data inpainted on the inpainting mask, all realisations return p -values of 0.01 or below, with a median of 0.008. In the case of the common mask, the median remains at 0.008 but with a larger scatter, and increasing to a maximum of around 0.1. However, 99% of the realisations return p -values below 0.05. We conclude that the significance of the anomaly is maintained when performing a full-sky analysis of the unpainted maps. Then, for this particular statistic, we will use maps unpainted on the inpainting mask due to the lower scatter of their p -values. Since the $\ell = 2$ and $\ell = 3$ temperature-correlated E -mode spherical harmonics are derived by a simple scaling of the corresponding temperature modes, their preferred directions and alignment statistics are identical and also anomalous.

Figure 12 presents the results from our analysis of the realisations where the temperature maps are unpainted using the inpainting mask. In the top left panel, the blue histogram shows the expected behaviour for the unconstrained temperature simulations. Since the quadrupole and octopole are statistically independent quantities for an isotropic random field, the alignment statistic follows a uniform distribution on the unit interval. The black dashed line corresponds to the median value of 0.988 computed from all of the unpainted SMICA realisations, a misalignment between the quadrupole and octopole of 9° , with a p -value of 0.008. This is in good agreement with the values reported in ref. [3]. The top right panel shows the equivalent result for the E modes. Both the unconstrained and constrained distributions seem to be consistent with a uniform distribution. This might be considered unexpected in the latter case, since the temperature-correlated parts of the E -mode quadrupole and octopole must reflect the alignment of the SMICA temperature modes. However, it has long been observed that the CMB quadrupole amplitude in temperature is unusually low [30, 31], so that the part of the E -mode quadrupole signal that is uncorrelated with the temperature quadrupole dominates the variance of the statistical distribution, and the behaviour of the alignment statistic approximates an isotropic field.

The middle panels show the alignment statistic computed between the temperature quadrupole and E -mode quadrupole (left) and octopole (right). In the case of $|\hat{n}_2^T \cdot \hat{n}_2^E|$, the unconstrained simulations show a modest preference for alignment that reflects the intrinsic correlation between the temperature and E -mode quadrupoles. However, this behaviour is not seen for the constrained realisations, which is again related to the low amplitude of the SMICA quadrupole. For $|\hat{n}_2^T \cdot \hat{n}_3^E|$, the unconstrained simulations are consistent with statistically independent quantities, whereas the constrained realisations do show a modest preference for alignment. This is a consequence of the observed correlation between the SMICA temperature quadrupole and octopole, and the fact that the latter constrains the temperature-correlated part of the E -mode octopole. The SMICA temperature octopole has an amplitude consistent with that expected for the *Planck* 2018 cosmological model.

The bottom panels present the results for the temperature octopole and E -mode quadrupole (left) and octopole (right) alignment statistics. In the former case, the distributions for both unconstrained and constrained realisations are consistent with that expected for statistically independent quantities, where the potential alignment in the con-

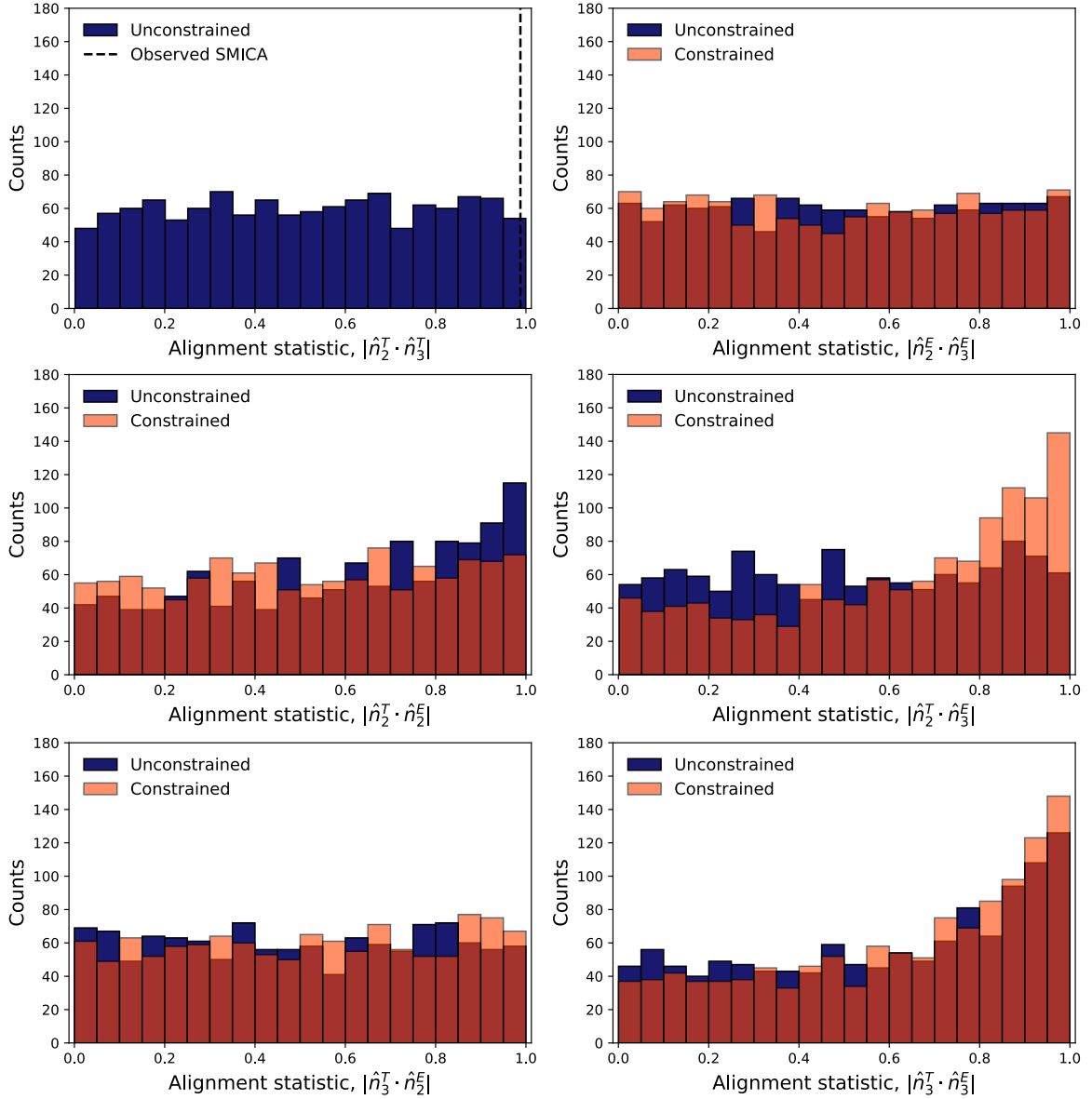


Figure 12. Alignment statistics computed between all possible pairs of preferred directions for temperature and E -mode maps at $\ell = 2, 3$. The histograms show the expected distributions of the statistics for 1200 unconstrained (blue) or constrained (orange) realisations, with the overlap of the distributions in red. Each of the E -mode maps is constrained by a separate realisation of the *Planck* SMICA temperature map inpainted using the inpainting mask. The top left panel indicates the temperature alignment statistic, where the observed value is determined from the mean of the values computed from the inpainted SMICA maps and indicated by a black dashed line.

strained simulations are again suppressed by the effect of the low SMICA quadrupole. In the latter case, both sets of simulations show a modest preference for alignment as expected. It should be apparent that there are no values of the alignment statistics presented here that can provide insight into the fluke hypothesis.

8 Harmonic-based estimators

In this section, we consider harmonic-based estimators designed to study anomalies detected in the CMB temperature maps of *WMAP* [24] and *Planck* data [3–5] at low multipoles. In particular, we focus on the point-parity or even-odd asymmetry [32–35], as well as the lack of signal on large angular scales in the two-point angular correlation function [36–42]. These features are clearly present in the CMB temperature data; however, their statistical significance is generally low, around $2\text{--}3\sigma$. Therefore, incorporating the information contained in the polarised CMB anisotropy pattern may help to determine whether these features are merely statistical flukes or traces of deviations from the standard Λ CDM cosmological model. For this reason, we use the information contained in the EE and TE CMB angular power spectra and build estimators for the even-odd asymmetry in section 8.1, and the lack-of-correlation anomaly in section 8.2. To construct these harmonic-based estimators, we first compute the CMB power spectra from the constrained and unconstrained realisations described in section 3. This computation was performed using ECLIPSE [43], an implementation of a quadratic maximum likelihood estimator [44]. The analysis was conducted at $N_{\text{side}} = 64$, employing the common and the inpainting mask for temperature, while applying the corresponding extended polarisation masks derived in section 4 to the Q and U sky maps.

8.1 Even-odd asymmetry

An estimator for the point-parity symmetry of the large angular-scale anisotropy of the CMB was defined in ref. [32] based on the properties of the even and odd C_ℓ power spectra, and proposed as a practical tool for detecting foreground residuals. However, contrary to expectations, they found that the *WMAP* data exhibited an odd-parity preference, though only at a modest 95% confidence level. Later, ref. [33] identified an anomaly in the parity symmetry of the *WMAP* 3-year and 5-year temperature maps, with a significance level of 4 in 1000 at large angular scales. This finding was later confirmed in the *WMAP* 7-year data in refs. [34, 35, 45] at a similar level of significance. These analyses were further extended to *Planck* data from the 2013 [3], 2015 [4], and 2018 [5] data releases, consistently finding an anomaly at the percent level or below, with a maximum significance reaching 0.2–0.4%. In the latter case, it was shown that, when accounting for the look-elsewhere effect, such an anomaly decreases to approximately 1.6–2%.

By generalising to E modes the estimator used to study the even-odd asymmetry [33, 34] in temperature, one can write

$$R_{EE}(\ell_{\text{max}}) = \frac{C_{EE}^+(\ell_{\text{max}})}{C_{EE}^-(\ell_{\text{max}})}, \quad (8.1)$$

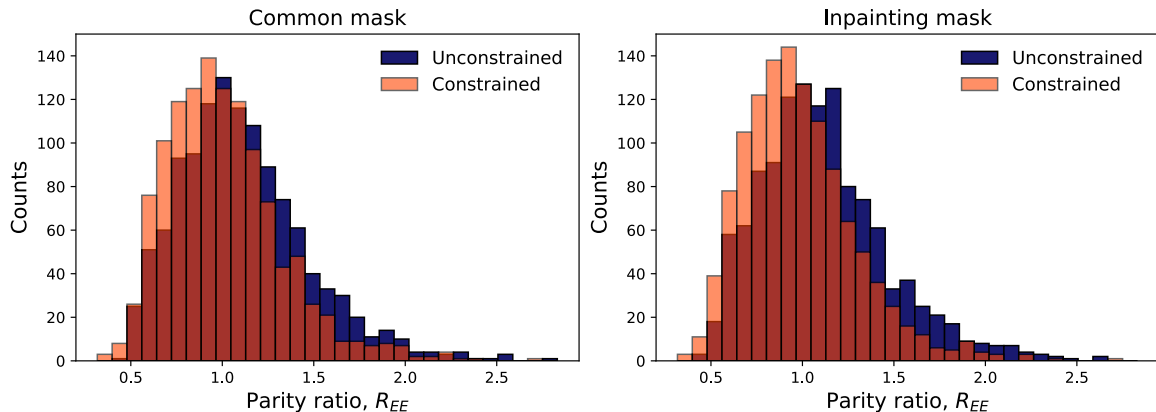


Figure 13. Histograms of $R_{EE}(\ell_{\max})$ computed with $\ell_{\max} = 24$ from the unconstrained simulations (blue) and the constrained simulations (orange), with the overlap shown in red. Similar plots are obtained for other values of ℓ_{\max} from 3 to 50. The left panel presents results derived using the common mask, and the right panel for the inpainted mask.

where

$$C_{EE}^{+/-}(\ell_{\max}) = \frac{1}{N_{+/-}} \sum_{\ell \in \text{even/odd}}^{\ell_{\max}} \frac{\ell(\ell+1)}{2\pi} C_{\ell}^{EE}, \quad (8.2)$$

with $N_{+/-}$ being the number of even/odd multipoles present in the considered harmonic range (i.e., from 2 to ℓ_{\max}), where the sum is taken over the even/odd multipoles. However, it can be shown that R_{EE} is unable to rule out the fluke hypothesis, since the histograms constructed for the constrained and unconstrained total E -mode signal are practically indistinguishable (see figure 13 for $R_{EE}(\ell_{\max} = 24)$, where the left panel corresponds to the common mask and the right panel to the inpainted mask). The choice of $\ell_{\max} = 24$ serves as a representative example of the behaviour of this estimator, with very similar results observed for other values of ℓ_{\max} .

We then consider an analysis based on the TE spectrum. Although this is not connected to the point-parity of a map, it is not unreasonable to study the relative behaviour of the even and odd modes of the spectrum. In this case, we observe a noticeable shift between the histograms of $R_{TE}(\ell_{\max})$ constructed from the constrained and unconstrained simulations, where R_{TE} is built as in eq. (8.1) with EE replaced by TE . For $\ell_{\max} = 27$, this shift is most pronounced in the case of the common mask, where the probability of ruling out the fluke hypothesis is approximately 24.6%, while the average probability for $\ell_{\max} \in [17, 31]$ is 19.9%. Similarly, for the inpainting mask, the probability peaks at 30.5% for $\ell_{\max} = 22$, with an average of 27.5% over the range $\ell_{\max} \in [19, 30]$. These probabilities are computed by evaluating the area of the histogram of the unconstrained simulations to the right of the 99th percentile value of the constrained distribution. Note that, although the TE spectrum is on average positive within the harmonic considered range, some realisations, particularly at low ℓ , may take on negative values. This can result in a negative R_{TE} estimator, especially at very low ℓ_{\max} , when the denominator becomes much smaller than the numerator, approaching zero from below. Although this behavior is traced by the simulations, it suggests that R_{TE} may not be ideal for this type of analysis, particularly at low ℓ_{\max} .

For the above reasons, we also consider an alternative approach based on the analysis of the even and odd C_ℓ^{XX} separately, see e.g. ref. [46]. This can be achieved by considering the mean fluctuations of the even or odd multipoles with respect to the fiducial spectrum $C_\ell^{XX,\text{fid}}$, i.e. $\delta C_{XX}^{+/-}$, where XX denotes TT , EE , or TE , defined as follows,

$$\delta C_{XX}^{+/-}(\ell_{\text{max}}) = \frac{1}{N_{+/-}} \sum_{\ell \in \text{even/odd}}^{\ell_{\text{max}}} \frac{\ell(\ell+1)}{2\pi} (C_\ell^{XX} - C_\ell^{XX,\text{fid}}), \quad (8.3)$$

where the factor $\ell(\ell+1)/2\pi$ ensures that each term in the sum has (almost) equal weight in TT . In appendix A, we show that δC_{TT}^+ is anomalous in the *Planck* data with $\ell_{\text{max}} \in [20, 30]$, while δC_{TT}^- is compatible with the Λ CDM expectation.⁵ Moreover, in the same appendix we verify that δC_{EE}^+ is able to detect the anomaly with a significance comparable to that found in TT , if built with the temperature-correlated E -mode data. We then compute the δC_{EE}^+ and δC_{EE}^- statistics for the full E -mode signal, as shown in the left and right panels of figure 14. The upper panels correspond to results derived with the common mask, while the lower panels correspond to the inpainting mask. The histograms are derived from both the unconstrained simulations (in blue) and the constrained simulations (in orange), with $\ell_{\text{max}} = 27$. Unfortunately, it turns out that eq. (8.3) with $X = EE$ is insufficient to construct a suitable estimator for the even-odd asymmetry, since the difference between the constrained and unconstrained histograms is minimal. The behaviour of $\delta C_{EE}^{+/-}$ shown in figure 14 for $\ell_{\text{max}} = 27$ remains consistent across the range of ℓ_{max} values considered (from 3 to 50).

Finally, we consider the estimators $\delta C_{TE}^{+/-}$. Figure 15 presents the results for $\delta C_{TE}^{+/-}$ derived from the constrained and unconstrained simulations with $\ell_{\text{max}} = 25$ for the common mask (upper panels) and with $\ell_{\text{max}} = 27$ for the inpainting mask (lower panels). Moreover, the left panels are for δC_{TE}^+ and the right panels for δC_{TE}^- . While the right panels do not show any displacement between the two histograms, a clear shift is instead observed in the left panels which is based on even multipoles. Similar histograms are obtained for ℓ_{max} values ranging from 3 to 50, where δC_{TE}^- does not exhibit any measurable shift between the two histograms, while the amplitude of the shift in δC_{TE}^+ varies. The highest probability of rejecting the fluke hypothesis is found to be 51.0% for the common mask at $\ell_{\text{max}} = 25$ whereas it is 48.1% for the inpainting mask at $\ell_{\text{max}} = 27$. These probabilities are computed by evaluating the right tail of the histogram obtained from the unconstrained simulations, starting from the value corresponding to the 99th percentile of the constrained simulations. Figure 16 shows the probability of rejecting the fluke hypothesis as a function of ℓ_{max} , based on δC_{TE}^+ (blue line for the common mask and orange line for the inpainting mask).

8.2 Lack of correlation

The measured two-point angular correlation function of the CMB temperature anisotropies has been found to exhibit a lack of large-angle correlations as compared to the standard cosmological model. Initially observed in the *COBE-DMR* data in the 1990s [36, 47], subsequent studies based on the *WMAP* data characterised the anomaly as a surprising deficit in correlation power on angular scales larger than 60° [31, 39]. This effect has persisted through multiple data releases of the *Planck* mission [5], remaining robust across various analysis methods, sky masks, and component-separation techniques.

⁵Therefore in this approach the even-odd asymmetry is interpreted as a lack of power in the even multipoles.

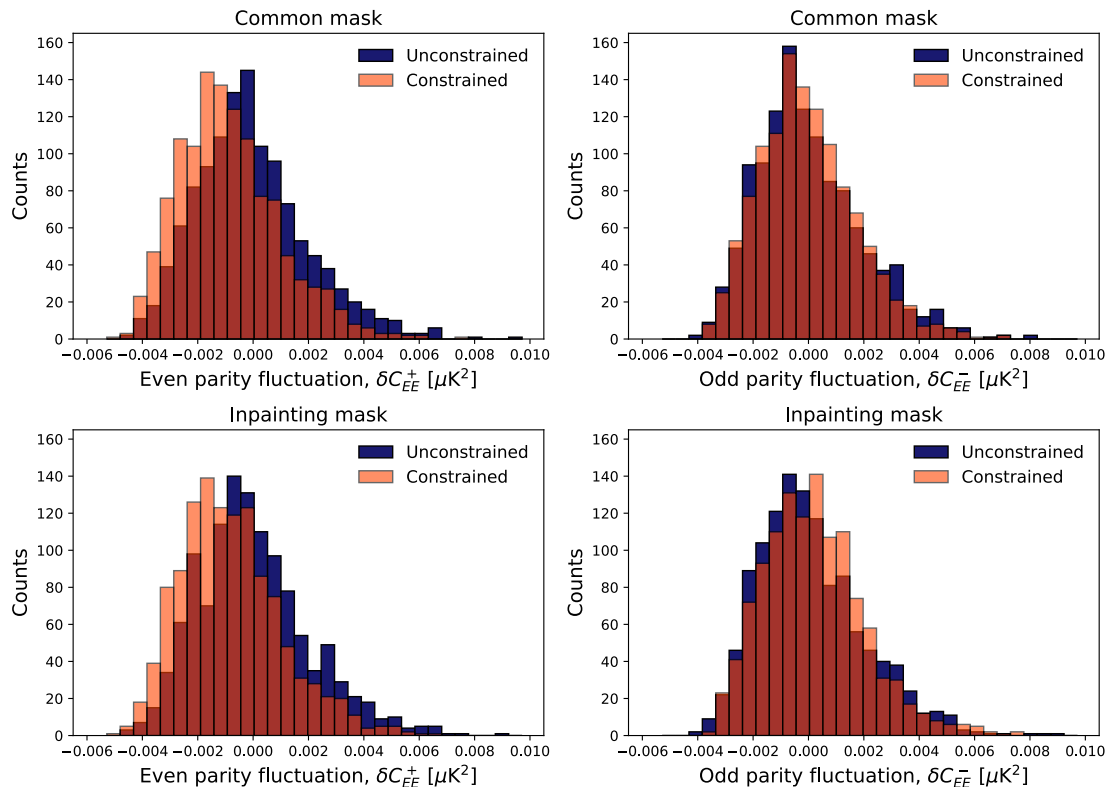


Figure 14. Histograms of δC_{EE}^+ (left panels) and δC_{EE}^- (right panels) computed with $\ell_{\max} = 27$ from the unconstrained (blue) and constrained simulations (orange), with the overlap in the distributions shown in red. The upper panels correspond to results for the common mask, while the lower panels are for the inpainting mask.

To quantify this deficit, the *WMAP* team defined the $S_{1/2}$ statistic [37] as the integral of the square of the two-point angular correlation function $C(\theta)$ over the angular range from 60° to 180° . This statistic was later generalised in ref. [6] as the S^{XY} statistic, which measures correlations between any combination of temperature (T) and polarisation (Q, U) maps; see also ref. [48] for a recent analysis on *Planck* data. While the observed value of S^{TT} for temperature correlations has consistently been shown to be low, with p -values typically less than 1% for Λ CDM simulations, polarisation data may provide a crucial test to distinguish between a mere statistical fluke and genuine new physics. If the lack of large-angle temperature correlations is simply a statistical fluctuation within the Λ CDM framework, then the temperature-polarisation cross-correlation should also exhibit suppression at large angles, at a level consistent with the intrinsic correlation between the temperature and E -mode polarisation signals. In this section, we present an analysis to address the fluke hypothesis and explore its implications.

The estimator which quantifies the distance of the two-point angular correlation function from zero over the range $[\theta_1, \theta_2]$ is given by

$$S^{XY}(\theta_1, \theta_2) \equiv \int_{\cos \theta_2}^{\cos \theta_1} [C^{XY}(\theta)]^2 d(\cos \theta), \quad (8.4)$$

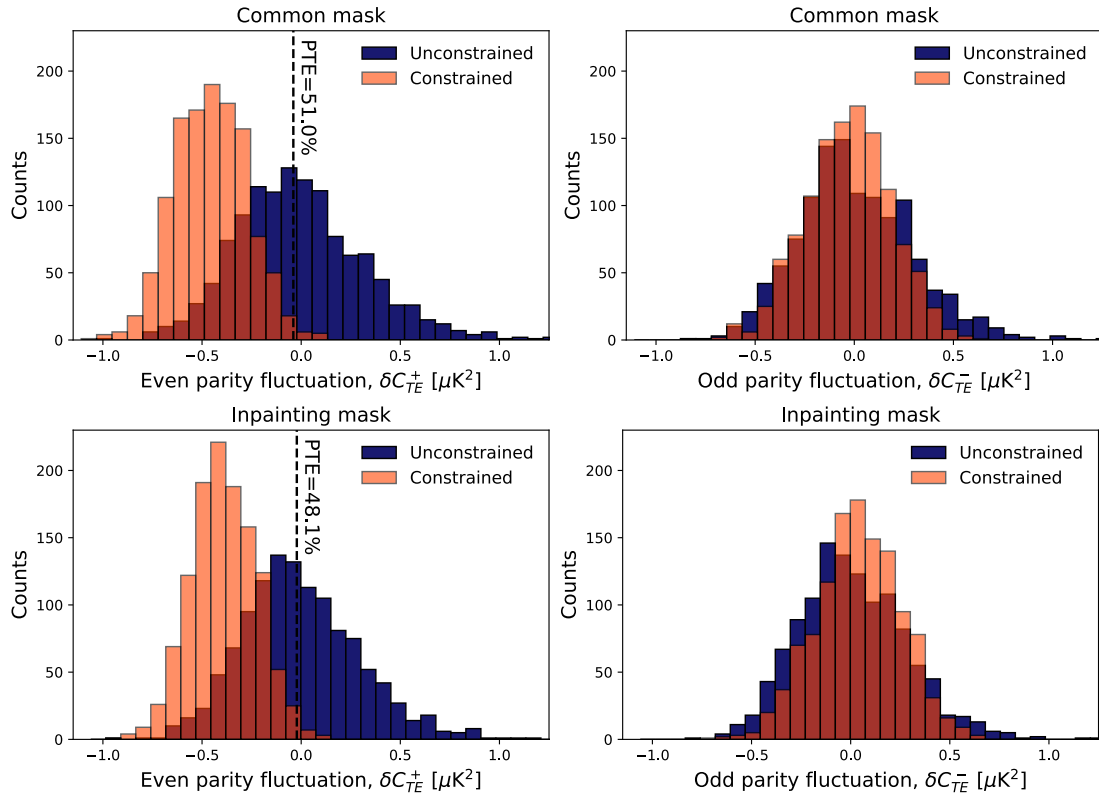


Figure 15. Histograms of δC_{TE}^+ (left panels) and δC_{TE}^- (right panel), computed from both the unconstrained (blue) and constrained (orange) simulations, with the overlap between the distributions shown in red. The upper panels correspond to the common mask and refer to $\ell_{\max} = 25$, while the lower panels correspond to the inpainting mask and refer to $\ell_{\max} = 27$. The black dashed vertical lines in the upper (lower) left panels indicate the values for which only 1% of the constrained realisations and 51.0% (48.1%) of the unconstrained realisations have a larger δC_{TE}^+ for the common (inpainting) mask respectively. Finding $\delta C_{TE}^+ > -0.04 \mu\text{K}^2$ for the common mask or $\delta C_{TE}^+ > -0.02 \mu\text{K}^2$ for the inpainting mask would allow us to reject the fluke hypothesis at a 99% confidence level or greater.

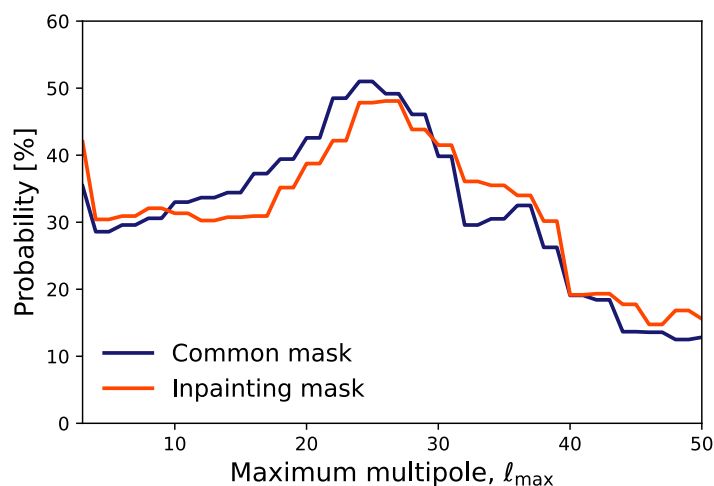


Figure 16. Probability of ruling out the fluke hypothesis versus ℓ_{\max} considering δC_{TE}^+ for the common mask (blue line) and the inpainting mask (orange line).

where $C^{XY}(\theta)$ is the two-point correlation function of the XY spectrum. Often, we set $\theta_1 = 60^\circ$ and $\theta_2 = 180^\circ$, consistent with the earlier *WMAP* analysis, and refer to the statistic in this case as $S_{1/2}^{XY}$. Here, we study S^{XY} estimators based on E modes (section 8.2.1), TQ (section 8.2.2) and TE (section 8.2.3).

8.2.1 Estimators based on E modes

We focus now on $XY = EE$. The two-point correlation function, $C^{EE}(\theta)$, is defined as

$$C^{EE}(\theta) = \sum_{\ell=2}^{\ell_{\max}} \frac{2\ell+1}{4\pi} C_{\ell}^{EE} P_{\ell}(\cos\theta), \quad (8.5)$$

where the $P_{\ell}(x)$ are the Legendre polynomials. Then, following ref. [40], eq. (8.4) can be written as

$$S_{1/2}^{EE} = \sum_{\ell=2}^{\ell_{\max}} \sum_{\ell'=2}^{\ell_{\max}} \frac{2\ell+1}{4\pi} \frac{2\ell'+1}{4\pi} C_{\ell}^{EE} I_{\ell\ell'} C_{\ell'}^{EE}, \quad (8.6)$$

where

$$I_{\ell\ell'} = \int_{-1}^{1/2} P_{\ell}(x) P_{\ell'}(x) dx. \quad (8.7)$$

Note that $I_{\ell\ell'}$ is computed following appendix A of ref. [40].

We then compute histograms from the $S_{1/2}^{EE}$ values determined from the constrained and unconstrained simulations described in section 3, for the common and inpainting masks presented in section 4. Here, we report on results derived for $\ell_{\max} = 32$, since these are largely insensitive to variations in ℓ_{\max} across the range of 10 to 50. We then calculate the 99% PTE from the fraction of unconstrained simulations that yield a value of $S_{1/2}^{EE}$ above a given threshold, defined as the value of $S_{1/2}^{EE}$ such that 99% of the constrained simulations have lower values. The results are presented in the top row of figure 17, with the threshold shown as a dashed vertical line, together with the corresponding PTE value. This can be interpreted as the probability of obtaining a realisation which is not compatible with that expected from the *SMICA* temperature observations. The low PTE values (up to 2.5%) indicate considerable overlap of the two histograms computed from the constrained and unconstrained simulations, implying that the $S_{1/2}^{EE}$ estimator is not suitable for testing the fluke hypothesis.

Subsequently, we seek an optimised $S^{EE}(\theta_1, \theta_2)$ statistic by considering a grid of angles for $\theta_{1,2} \in [0^\circ, 180^\circ]$ in steps of 1° . We then compute the 99% PTE value for each (θ_1, θ_2) pair and present the results in the form of a matrix in the top (common mask) and bottom (inpainting mask) left panels of figure 18. The maximum PTE value is highlighted in the matrix with red circles, since multiple pairs of angles yield the same maximum. We report in table 1 the 99% maximum PTE values determined from simulations that adopt the E -mode common or inpainting masks, together with one pair of (θ_1, θ_2) angles that maximises the constraining power of the S^{EE} estimator. We find a maximum PTE value of 4.3% for both the common and inpainting masks, occurring at relatively small angular scales of $(8^\circ, 9^\circ)$ and $(5^\circ, 35^\circ)$, respectively. We conclude that, even after a broad exploration of the behaviour of the statistic over the (θ_1, θ_2) parameter space, the maximum PTE value remains low and the estimator is not suitable for testing the fluke hypothesis.

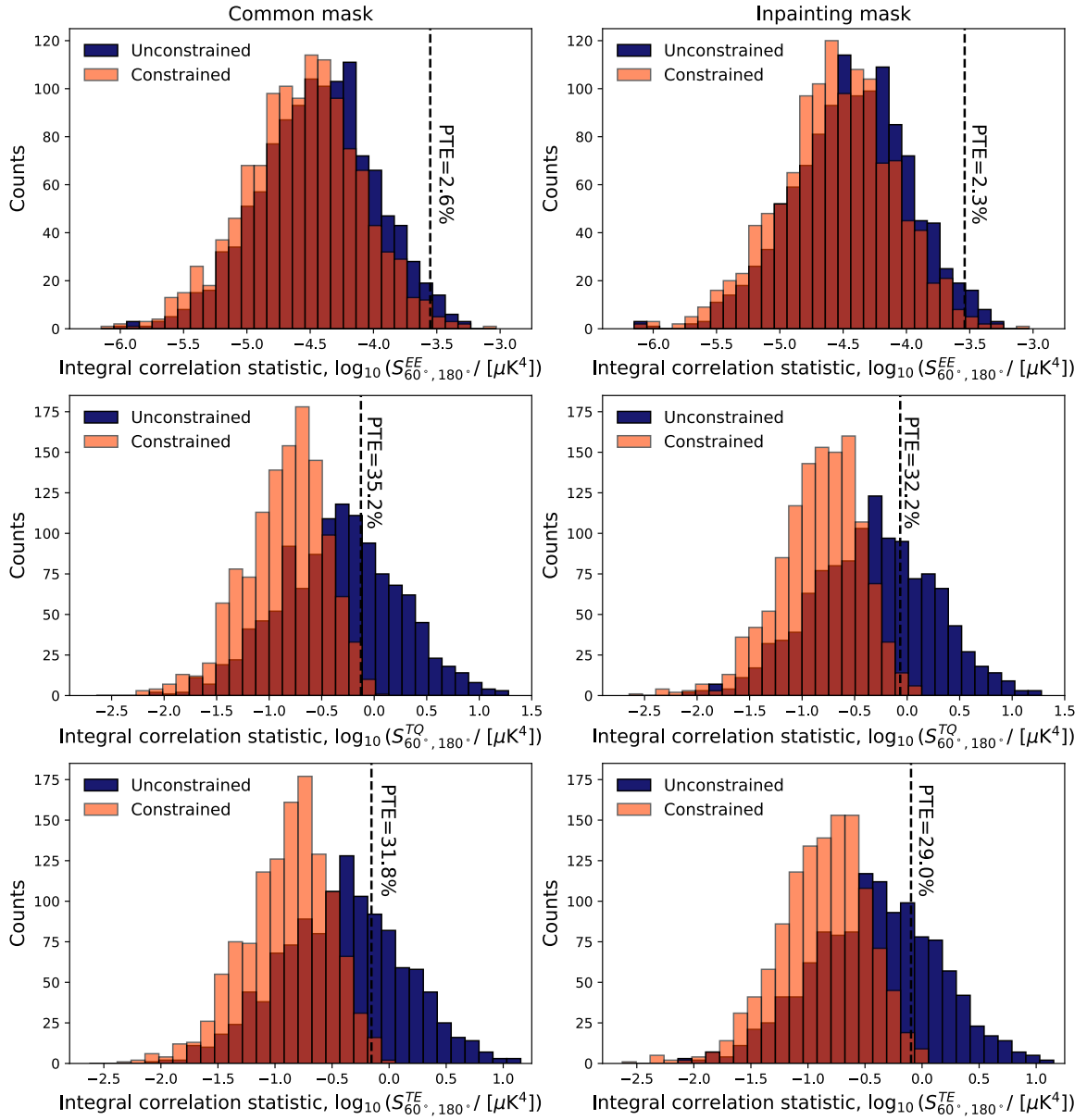


Figure 17. Histograms of $S_{1/2}^{EE}$ (top row), $S_{1/2}^{TQ}$ (middle row), and $S_{1/2}^{TE}$ (bottom row), for the unconstrained simulations (blue) and the constrained simulations (orange), with the overlap of the distributions shown in red, for $\ell_{\max} = 32$. The black dashed vertical lines in the panels indicate the values for which only 1% of the constrained realisations and the fraction of the unconstrained realisations corresponding to the stated PTE have a larger integral correlation statistic. Larger values would allow us to reject the fluke hypothesis at a 99% confidence level or greater. The results computed for the common mask are shown in the left column, and those for the inpainting mask in the right column.

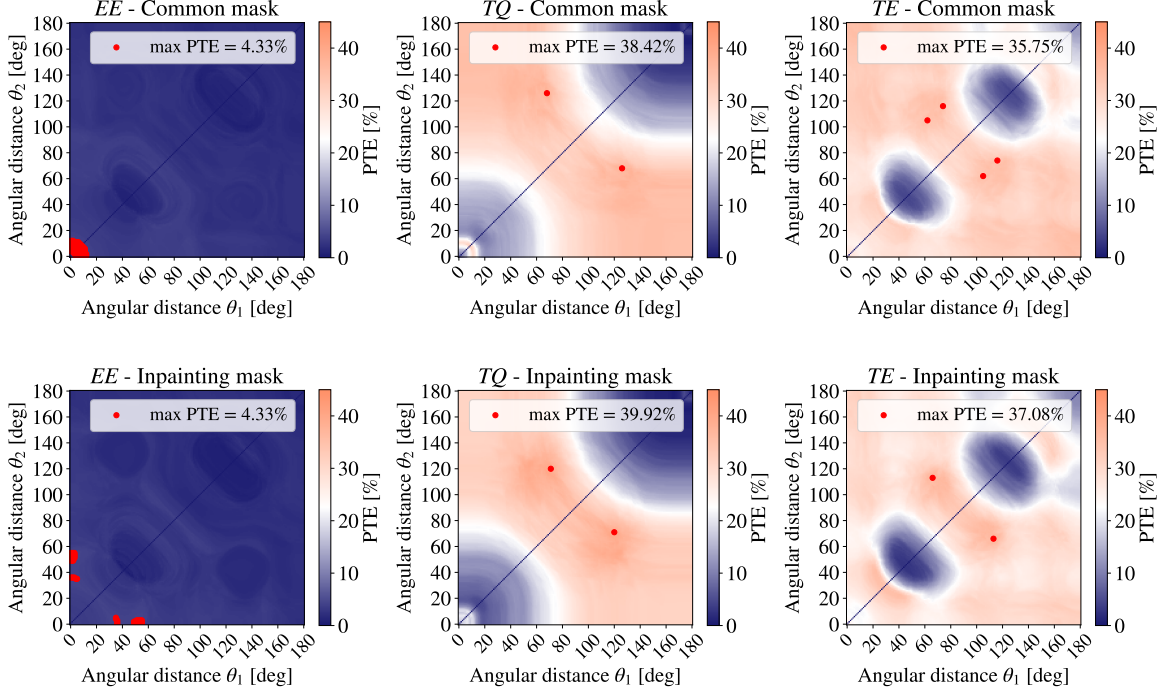


Figure 18. 99% PTE values for different (θ_1, θ_2) angles for the $S^{EE}(\theta_1, \theta_2)$ (left panels), $S^{TQ}(\theta_1, \theta_2)$ (middle panels) and $S^{TE}(\theta_1, \theta_2)$ (right panels) estimators with $\ell_{\max} = 32$, determined from the common mask (top row) and inpainting mask (bottom row) simulations. The red circles indicate the maximum PTE value within each matrix. The location of the maximum PTE value is consistent across both masks. However, for the S^{EE} estimator, the situation is more nuanced, likely because this estimator is not well-suited to test the anomaly. Interestingly, for the S^{TE} estimator using the common mask (top right panel), more than one point was found to have the maximum PTE value.

8.2.2 Estimators based on TQ

We now perform the analysis based on the 2-point cross-correlation function between T and Q ,

$$C^{TQ}(\theta) = \sum_{\ell=2} \frac{2\ell+1}{4\pi} \sqrt{\frac{(\ell-2)!}{(\ell+2)!}} C_{\ell}^{TE} P_{\ell}^2(\cos \theta), \quad (8.8)$$

where $P_{\ell}^2(\cos \theta)$ are the associated Legendre polynomials of order 2. Then following ref. [6],

$$S_{1/2}^{TQ} = \sum_{\ell=2}^{\ell_{\max}} \sum_{\ell'=2}^{\ell_{\max}} \frac{2\ell+1}{4\pi} \frac{2\ell'+1}{4\pi} \sqrt{\frac{(\ell-2)! (\ell'-2)!}{(\ell+2)! (\ell'+2)!}} C_{\ell}^{TE} I_{\ell, \ell'}^{TQ} C_{\ell'}^{TE}, \quad (8.9)$$

with

$$I_{\ell \ell'}^{TQ} \equiv \int_{-1}^{1/2} P_{\ell}^2(x) P_{\ell'}^2(x) dx, \quad (8.10)$$

where $I_{\ell \ell'}^{TQ}$ is computed following appendix B of ref. [6].

The results of the analysis for these quantities are presented in the second row of figure 17. In contrast to the $S_{1/2}^{EE}$ estimator, the histograms corresponding to the constrained and unconstrained simulations exhibit considerably reduced overlap. The PTE is thus larger,

99% PTE	S^{EE}	S^{TQ}	S^{TE}
Common	4.3% (8°, 9°)	38.4% (68°, 126°)	35.8% (62°, 105°)
Inpainting	4.3% (5°, 35°)	39.9% (71°, 120°)	37.1% (66°, 113°)

Table 1. 99% maximum PTE values (in percentage) for the $S^{XX}(\theta_1, \theta_2)$ estimators found by exploring the (θ_1, θ_2) parameter space, in steps of 1° , for the simulations using the common and inpainting masks. The (θ_1, θ_2) values that maximise the PTE can be read below the PTE value. The results have been obtained with $\ell_{\max} = 32$.

meaning that there is a larger probability to obtain a realisation which is not compatible with expectations when constrained by temperature observations. Therefore, $S_{1/2}^{TQ}$ is an improved estimator for testing the fluke hypothesis and should be considered for future studies of the lack of correlation anomaly.

Results from the optimisation study for the 99% PTE are shown in the top (common mask) and bottom (inpainting mask) middle panels of figure 18 and summarised in table 1. The maximum PTE value is observed on the E -mode inpainting mask, reaching 39.9% (71°, 120°). However, the optimisation study consistently reveals higher PTEs for the E -mode common mask, as illustrated in figure 18. It is also worth noting that, although the PTE is only slightly higher than in the standard (60°, 180°) case, the maximum values for both masks occur at a similar location in the parameter space and correspond to large angular scales, in contrast to the EE case.

8.2.3 Estimators based on TE

We finally consider the estimator based on the cross-correlation between T and E :

$$C^{TE}(\theta) = \sum_{\ell=2}^{\ell_{\max}} \frac{2\ell+1}{4\pi} C_{\ell}^{TE} P_{\ell}(\cos \theta). \quad (8.11)$$

Equation (8.4) with $XX = TE$ then becomes

$$S_{1/2}^{TE} = \sum_{\ell=2}^{\ell_{\max}} \sum_{\ell'=2}^{\ell_{\max}} \frac{2\ell+1}{4\pi} \frac{2\ell'+1}{4\pi} C_{\ell}^{TE} I_{\ell, \ell'} C_{\ell'}^{TE}. \quad (8.12)$$

Results from this analysis are presented in the third row of figure 17. As for the $S_{1/2}^{TQ}$ estimator, the histograms corresponding to the constrained and unconstrained simulations do not fully overlap, and the PTE is higher compared to that of the $S_{1/2}^{EE}$ estimator. The $S_{1/2}^{TE}$ estimator can also be considered suitable for testing the fluke hypothesis.

As before, we attempt to optimise the statistic for the 99% PTE, shown in the top (common mask) and bottom (inpainting mask) right panels of figure 18, and summarised in table 1. Similar to the TQ case, the maximum PTE value occurs for the E -mode inpainting mask, reaching 37.1% (66°, 113°). However, the optimisation study consistently reveals larger PTEs for the E -mode common mask, as shown in figure 18. It is also worth noting that, similar to the TQ case, the maximum PTE values occur at large angular scales, in contrast to the EE case, and are located in a similar region of the parameter space for both masks.

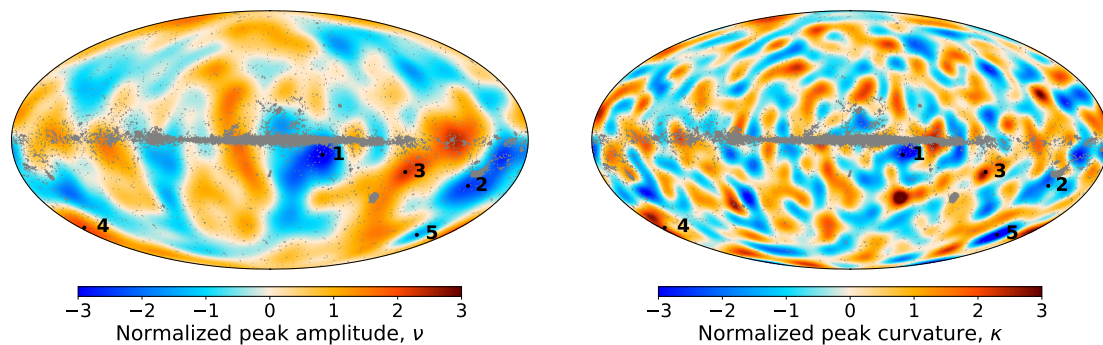


Figure 19. SMICA’s normalised ν (left) and κ (right) maps. Maps are smoothed to scale $R = 10^\circ$ and $R = 5^\circ$ respectively. The grey area corresponds to the pixels masked by the *Planck* PR3 inpainting mask. The peaks studied in ref. [5] are highlighted as black points.

9 The Cold Spot and other large-scale peaks in polarisation

The Cold Spot (CS), initially detected in the *WMAP* temperature data [49, 50] and subsequently confirmed by the *Planck* mission [3], is an atypical cold region situated in the southern hemisphere. This phenomenon deviates from the expectations established by the conventional Λ CDM cosmological model, with an apparent p -value $\lesssim 0.01$ [4], primarily due to its pronounced large-scale curvature deviation, approaching approximately 4 standard deviations at a resolution of $R = 5^\circ$ [51, 52].⁶ The underlying physical cause of this temperature decrement remains unresolved.

The *Planck* collaboration additionally conducted an extensive analysis of the Q and U polarisation patterns within the CS and four other large-scale features evident in the *Planck* CMB temperature data [5]. The additional peaks were selected as the most anomalous structures on large angular scales ($R = 10^\circ$) [51]. The central coordinates of the peaks are visually represented in figure 19, which displays the normalised amplitude (ν) and curvature (κ) maps, obtained from the SMICA data at two distinct resolutions, namely $R = 10^\circ$ and $R = 5^\circ$. Detailed procedures for calculating the normalised ν and κ values can be found in ref. [53]. However, due to *Planck*’s limited sensitivity to polarisation, no discernible patterns were identified at these locations.

Nevertheless, if the temperature decrement around the CS were a statistical fluke in the context of the Λ CDM model, there would be a polarised counterpart signal of predictable amplitude, since T and E are weakly correlated. Because *LiteBIRD* is expected to detect E modes close to the cosmic-variance limit, here we investigate if such features can be detected in ideal circumstances.

As indicated by the analysis in appendix B, improved results can be obtained from data and simulations at a higher resolution than used previously in this paper. Therefore, independent simulations are generated at $N_{\text{side}} = 512$, as described in section 9.1. For the constrained realisations, we make use of the inpainted SMICA map provided in the PR3

⁶ R denotes the width of the Gaussian filter applied in ref. [51], where the filter function is given by $w_\ell(R) = \exp[-\ell(\ell+1)/2R^2]$. In this context, R corresponds to the standard deviation of a two-dimensional Gaussian function in Euclidean space.

release and described in ref. [10]. The inpainting mask is shown in figure 19. A limitation of working at this resolution is that only one inpainted realisation of the SMICA data is available. Therefore, we focus here on those large-scale peaks that are centred far from the Galactic plane, i.e., Peaks 4 and 5 (the CS), where the effects related to foreground residuals and inpainting are expected to be less pronounced. We leave to a future study the effect of the stochasticity of the inpainting process on the results from this analysis.

The remainder of the section is structured as follows. First, section 9.1 presents the simulations used in this analysis. In section 9.2, a comprehensive description is provided regarding the methodology employed for the computation of polarised angular profiles and their associated amplitudes. Finally, section 9.3 is dedicated to presenting the primary forecasts of *LiteBIRD*'s potential to detect the polarised signal in cases where its origin may be attributed to a statistical fluke.

9.1 Simulations

As in the previous analyses, we test the fluke hypothesis using sets of unconstrained and constrained realisations, where the latter correspond to the case where the fluke hypothesis is correct, and the temperature-correlated part of the E -mode signal will also be statistically anomalous. These simulations are generated as follows.

1. We obtain the temperature spherical harmonics of the inpainted SMICA temperature map and deconvolve a Gaussian beam of $5'$ from them.
2. Then, we generate constrained E -mode spherical harmonic coefficients using eq. (3.1), where $a_{\ell m}^T$ are the temperature spherical harmonic coefficients obtained in the previous step.
3. The B -mode spherical harmonic coefficients are generated as Gaussian random realisations from the C_{ℓ}^{BB} fiducial power spectrum described in section 3.
4. Q and U maps are then generated from these spherical harmonics at $N_{\text{side}} = 512$, convolved with a Gaussian beam of $\text{FWHM} = 30'$.

We follow this procedure to generate 10 000 constrained simulations.

We then generate 1000 unconstrained realisations from the fiducial power spectra at $N_{\text{side}} = 512$ and convolved with a Gaussian beam of $\text{FWHM} = 30'$. In this case, although the temperature and E modes are still correlated, a polarised signal may not be detected around the locations of the SMICA peaks since the temperature realisations might not have peaks there. Of course, polarisation peaks could arise from the E -mode contribution that is not correlated with temperature. Note that these simulations differ from the equivalent lower-resolution simulations as the latter have been inpainted.

9.2 Polarised angular profile

To calculate the polarised angular profile, we use the magnitudes Q_r and U_r , given by eq. (2.4), evaluated at the central coordinates of the respective peak, instead of the traditional Stokes parameters Q and U . The magnitude Q_r characterises the radial or tangential polarisation

patterns surrounding the observation point, while U_r represents polarisation that is rotated by an angle of 45° with respect to Q_r . If the peak eccentricity is negligible, as shown in ref. [52], the polarisation field is expected to have rotational symmetry. As a consequence of this symmetry, Q_r and U_r remain independent of the azimuthal angle ϕ , in contrast to the traditional Q and U parameters.

Q_r exhibits a direct proportionality to the angular power spectrum C_ℓ^{TE} , while U_r is associated with C_ℓ^{TB} . Within the framework of the Λ CDM model, the TB power spectrum is expected to be zero.⁷ Therefore, for this analysis, our primary focus will be exclusively on the parameter Q_r .

The angular profile is computed as the average, $\langle Q_r(\hat{\theta}) \rangle$, taken over the azimuthal angles within a specified annulus ($\mathcal{A}(\hat{n}_{\text{ref}}, \theta_{\text{min}}, \theta_{\text{max}})$). Here, \hat{n}_{ref} corresponds to the direction aligned with the centre of the annulus, which is also the centre of the corresponding peak. The parameters θ_{min} and θ_{max} represent the radial distances that define the inner and outer radii of the annulus, respectively. Furthermore, $\hat{\theta} = \theta_{\text{min}} + (\theta_{\text{max}} - \theta_{\text{min}})/2$ is the midpoint of the annular region.

With the angular profile, $\langle Q_r(\hat{\theta}) \rangle$, we can quantify the strength of the polarisation signal associated with the peaks using an amplitude A , which is determined by rescaling a model profile. If the profiles follow a Gaussian distribution, the amplitude is also Gaussian and its mean can be calculated as

$$A = \frac{\sum_i \sum_j \langle \hat{Q}_r(\hat{\theta}_i) \rangle [\mathbf{C}^{-1}]_{ij} \langle Q_r(\hat{\theta}_j) \rangle}{\sum_i \sum_j \langle Q_r(\hat{\theta}_i) \rangle [\mathbf{C}^{-1}]_{ij} \langle Q_r(\hat{\theta}_j) \rangle}. \quad (9.1)$$

The associated uncertainty in the amplitude is given by

$$\sigma_A = \frac{1}{\sqrt{\sum_i \sum_j \langle Q_r(\hat{\theta}_i) \rangle [\mathbf{C}^{-1}]_{ij} \langle Q_r(\hat{\theta}_j) \rangle}}, \quad (9.2)$$

where $\langle \hat{Q}_r(\hat{\theta}_i) \rangle$ and $\langle Q_r(\hat{\theta}_i) \rangle$ are the observed and model angular profiles at the annulus $\mathcal{A}(\hat{n}_{\text{ref}}, \theta_{\text{min},i}, \theta_{\text{max},i})$ respectively, and \mathbf{C} is the covariance matrix encompassing the angular profiles of the various annuli.

To construct a model for each peak's angular profile, $\langle Q_r(\hat{\theta}) \rangle$, and its associated covariance matrix, \mathbf{C} , we rely on 9000 constrained simulations. It is important to emphasise that the model generated by averaging the profile from simulations does not represent the ensemble-averaged theoretical angular profile as defined in eq. (C.10). Instead, it constitutes a specific realisation of the theoretical profile, in particular, the inpainted **SMICA** map realisation.

Once an angular profile model of the peak is established, we use 1000 different simulations to calculate the angular profiles of the most extreme peaks. For the constrained realisations, these are identified as peaks 4 and 5. However, for the unconstrained simulations, such extrema may not be found at the corresponding locations. Therefore, for each simulation, we identify the most extreme temperature peaks based on their amplitude or curvature at

⁷Notice that recent observations have hinted at the potential detection of isotropic birefringence, which could provide evidence for the existence of parity violations and result in a non-zero C_ℓ^{TB} [54].

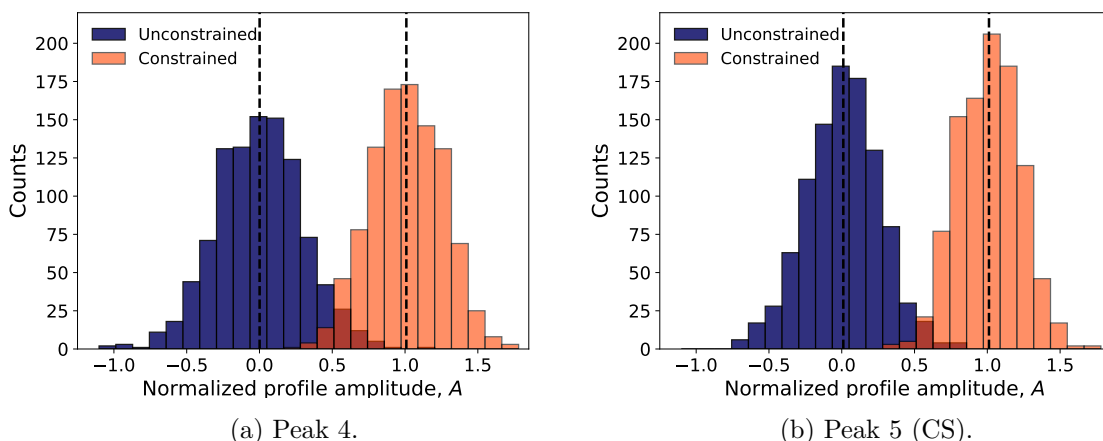


Figure 20. Distribution of A obtained from the 1000 unconstrained (blue) and constrained (orange) simulations, with the overlap shown in red. The black dashed vertical lines indicate the expected values of the distributions: unity when a polarised counterpart peak is present, and zero when it is not, at the location of the most extreme temperature peak. The constrained simulations were generated from the inpainted SMICA temperature map at $N_{\text{side}} = 512$, using the inpainting mask provided in the PR3 data release, as shown in figure 19.

	Constrained		Unconstrained	
Peak	4	5	4	5
$\langle A \rangle$	1.01	1.01	0.01	0.00
σ	0.24	0.21	0.30	0.26
$\langle A \rangle / \sigma$	4.10	4.76	0.02	0.00

Table 2. Summary statistics of the peak amplitude distribution calculated with 1000 simulations of constrained and unconstrained simulations. From top to bottom: the mean $\langle A \rangle$, the standard deviation of the distribution σ , the signal-to-noise ratio of the peak detection defined as $\langle A \rangle / \sigma$.

resolutions of $R = 10^\circ$ and $R = 5^\circ$, respectively. These new Peaks are then considered equivalent to peaks 4 and 5 in the constrained realisations. The Q_r angular profiles are then calculated at these identified locations. This allows us to obtain the distribution of the amplitude, A , by fitting them to the model angular profiles of Peaks 4 and 5.

9.3 Large-scale peak detection forecasts for *LiteBIRD*

Figure 20 illustrates the distribution of A from 1000 constrained and unconstrained realisations for these specific peaks. Additionally, table 2 presents a summary of the statistics derived from these distributions, including the mean amplitude $\langle A \rangle$, the standard deviation σ of the distribution, and the signal-to-noise ratio of the peak detection, defined as $\langle A \rangle / \sigma$.

The distributions of the peak amplitude are clearly distinguishable, with Peaks 4 and 5 being detectable at significance levels exceeding 4σ . However, there is a small overlap around $A \simeq 0.5$. To assess the statistical significance of an A value belonging to either distribution, we calculate the probabilities of false positives and false negatives for different A thresholds.

Peak	A	False Negatives (α)	False Positives (β)
4	0.451	0.01	0.062
	0.604	0.05	0.021
	0.753, ^a	0.151	0.006
5 (CS)	0.534	0.01	0.019
	0.615, ^a	0.025	0.008
	0.660	0.05	0.005

^aMinimum A that could be detected with more than $3\sigma_A$.

Table 3. Probability of getting a false negative (α), or a false positive (β) for different A values.

A false positive occurs when a constrained simulation has a very low A value and is mistakenly assigned to the distribution for the unconstrained simulations. Conversely, a false negative happens when an unconstrained simulation has a high A value and is incorrectly assigned to the distribution for the constrained simulations, represented by the orange distribution in figure 20. The results of these calculations are shown in table 3.

In the case of the CS, the probability of not detecting its polarised counterpart ($A/\sigma_A < 3$) if the fluke hypothesis is correct is 0.025. In other words, if we do not detect the polarised signal, we can reasonably reject the fluke hypothesis with a p -value of 0.025. However, in the case of Peak 4, the non-detection is less conclusive with a p -value of 0.151. Conversely, if *LiteBIRD* detects the amplitude of a peak at a significance level greater than 3σ , we can confidently dismiss an origin different from the fluke hypothesis, with a p -value of 0.008 and 0.006 for Peaks 5 and 4, respectively.

In this ideal case, *LiteBIRD* possesses the capacity to either rule out the fluke hypothesis or confirm an origin consistent with it. It is essential to note that this analysis will need to be repeated in a more realistic scenario, encompassing residuals after component separation and the inpainting stochasticity effect in future work.

10 Conclusions

The presence of large angular scale features in the CMB temperature anisotropies that appear anomalous in the context of the best-fitting Λ CDM model is well established from both *WMAP* and *Planck* data. Evaluating whether these anomalies, of modest statistical significance, represent a true challenge to cosmology or are simply the consequence of a random realisation within the standard model requires additional, independent, information, since the temperature measurements on these scales are at the cosmic-variance limit. Polarisation observations can provide this information, but current data remain limited by residual systematic artefacts. In this paper, we consider whether the future CMB satellite, *LiteBIRD*, could specifically address the fluke hypothesis.

We therefore compare the properties of a number of statistical tests derived from simulations of the polarised CMB sky where the temperature-correlated part of the E -mode signal is constrained by current observations to those from unconstrained realisations. In particular, we consider the SMICA temperature map from the 2018 *Planck* analysis as a

template for generating this temperature-correlated polarisation anisotropy. However, since Galactic foreground residuals are likely to remain in the component-separated data, we use an inpainting technique to replace the high-foreground regions with a Gaussian constrained realisation. These regions are defined by the *Planck* 2018 common mask, and a dedicated low resolution inpainting mask derived here. Since the inpainting approach is stochastic, in practice, 1200 inpainted SMICA realisations are used as constraints for one set of E -mode simulations. A second set of 1200 unconstrained realisations for a fiducial cosmological model provide the basis for comparison. We also inpaint the corresponding temperature realisations for consistency, but use only one inpainting realisation per sky. Note that no foreground residuals after component separation or systematics are included in the simulations in order to optimise the possibility of detecting anomalous behaviour.

In sections 5 through 9 we apply well-known statistical tests that have previously indicated anomalies in the CMB temperature sky to the simulations, inpainted either with the common or inpainting masks. Ideally, such tests would be applied to the full sky to provide an unbiased sample of the CMB signal. However, since the SMICA map is statistically unusual, yet inpainted with values from arbitrary realisations of the standard cosmological model, in almost all cases the full-sky tests are sensitive to this inpainting process. We have therefore derived masks for the analysis of the polarised simulations. In addition, since the transformation to temperature-correlated E -mode signal is non-local and scale-dependent, the masks are determined from the properties of this component of the polarised sky in the unconstrained realisations. The analysis of masked data is also motivated by previous studies that have demonstrated that certain anomalies become more significant with decreasing sky coverage.

We find that no evidence for or against the fluke hypothesis can be obtained by an examination of the E -mode data alone. This implies that the anomalous features observed in temperature do not significantly impact the properties of the E -mode data. Thus any anomalous statistical properties seen in polarisation directly provide independent evidence against the standard cosmological model. However, for several of the applied statistical tests, TE (or TQ) results show sufficiently distinct properties between the constrained and unconstrained realisations that we can reach stronger conclusions about the fluke hypothesis.

In section 5, we find that if the observed TE covariance measured at $N_{\text{side}} = 64$ with the common mask applied exceeds $4.62 \mu\text{K}^2$, then we can reject the fluke hypothesis at the 99% confidence level with a probability of 48.7%. In addition, we note that qualitatively comparable sensitivity to the fluke hypothesis is afforded by various temperature and E -mode permutations of the skewness and kurtosis statistics.

We test for evidence of dipolar modulation in the simulated data in section 6 by fitting dipoles to maps of the local variance. Although results for the dipole modulation amplitudes do not have sufficient statistical power to assess the fluke hypothesis, we find that the anti-alignment of the dipole directions in temperature and TE , as measured by the separation angle $\alpha_{(T,TE)}$, does allow rejection with 13.6% probability at the 99% confidence level for $\cos \alpha_{(T,TE)} < -0.23$.

For completeness, we note that the alignment statistics presented in section 7 can not be generalised to the TE case, so no conclusions about the fluke hypothesis can be reached.

In section 8, we consider statistics constructed from a harmonic analysis of the data and utilising optimal QML estimates of the angular power spectra. The point-parity asymmetry

can be quantified from the properties of the even and odd power spectra of the data. In particular, the quantity δC_{TE}^+ indicates that the fluke hypothesis can be rejected at the 99% confidence level for the common mask with $\ell_{\max} = 25$ at a probability of 51.0%, and 48.1% for the inpainting mask with $\ell_{\max} = 27$. Then, we test for a lack of correlation on large-angular scales based on the estimator $S^{XY}(\theta_1, \theta_2)$. For $XY = TQ$ and $\ell_{\max} = 32$, an optimal statistic is found for the range $(71^\circ, 120^\circ)$ when applying the extended inpainting mask, yielding a 99% PTE of 39.9%. For the case $XY = TE$, a 37.1% PTE is determined over the range $(66^\circ, 113^\circ)$. Similar results are found with the application of the common mask.

Finally, section 9 considers the radial polarisation patterns in Q_r (directly proportional to the TE power spectrum) that are associated with two anomalous peaks in the SMICA temperature maps, both at high latitude and including the well-known Cold Spot. If *LiteBIRD* detects the amplitudes of these patterns at a significance larger than 3σ , then alternatives to the fluke hypothesis are strongly disfavoured. Conversely, the non-detection of these amplitudes at that confidence level would imply the rejection of the fluke hypothesis with at least a probability of 99.2%.

A full confirmation of these claims would require an assessment of more realistic data, which will be addressed in future work. In due course, tests applied to the *LiteBIRD* data itself should also benefit from the use of temperature anisotropy data improved by the application of component-separation techniques to a larger number of observational frequencies. The resulting reduced levels of residual foreground contamination would then allow a larger sky fraction to be considered.

Acknowledgments

This work is supported in Japan by ISAS/JAXA for Pre-Phase A2 studies, by the acceleration program of JAXA research and development directorate, by the World Premier International Research Center Initiative (WPI) of MEXT, by the JSPS Core-to-Core Program of A. Advanced Research Networks, and by JSPS KAKENHI Grant Numbers JP15H05891, JP17H01115, and JP17H01125. The Canadian contribution is supported by the Canadian Space Agency. The French *LiteBIRD* phase A contribution is supported by the Centre National d'Etudes Spatiales (CNES), by the Centre National de la Recherche Scientifique (CNRS), and by the Commissariat à l'Énergie Atomique (CEA). The German participation in *LiteBIRD* is supported in part by the Excellence Cluster ORIGINS, which is funded by the Deutsche Forschungsgemeinschaft (DFG, German Research Foundation) under Germany's Excellence Strategy (Grant No. EXC-2094 – 390783311). The Italian *LiteBIRD* phase A contribution is supported by the Italian Space Agency (ASI Grants No. 2020-9-HH.0 and 2016-24-H.1-2018), the National Institute for Nuclear Physics (INFN) and the National Institute for Astrophysics (INAF). Norwegian participation in *LiteBIRD* is supported by the Research Council of Norway (Grant No. 263011 and 351037) and has received funding from the European Research Council (ERC) under the Horizon 2020 Research and Innovation Programme (Grant agreement No. 772253, 819478, and 101141621). The Spanish *LiteBIRD* phase A contribution is supported by MCIN/AEI/10.13039/501100011033, project refs. PID2019-110610RB-C21, PID2020-120514GB-I00, PID2022-139223OB-C21, PID2023-150398NB-I00 (funded also by European Union NextGenerationEU/PRTR), and by MCIN/CDTI ICTP20210008 (funded

also by EU FEDER funds). Funds that support contributions from Sweden come from the Swedish National Space Agency (SNSA/Rymdstyrelsen) and the Swedish Research Council (Reg. no. 2019-03959). The U.K. *LiteBIRD* contribution is supported by the U.K. Space Agency under grant reference ST/Y006003/1 – “LiteBIRD U.K.: a major U.K. contribution to the LiteBIRD mission-Phase1 (March 25).” The U.S. contribution is supported by NASA grant no. 80NSSC18K0132. AG acknowledges support by the MUR PRIN2022 Project “BROWSEPOL: beyond standaRd mOdel With coSmic microwavE background POLarization” – 2022EJNZ53 financed by the European Union – Next Generation EU. Some of the results in this paper have been derived using the HEALPix [14], healpy [55], ECLIPSE [43], numpy [56], and matplotlib [57] packages.

A Even-odd asymmetry as a lack of power of the even multipoles

Here, we consider the estimators $\delta C_{TT}^{+/-}$, as defined in eq. (8.3), to measure the even-odd asymmetry in the *Planck* temperature anisotropy pattern. For each ℓ_{\max} , we compute the LTP of obtaining a value smaller than that observed by *Planck*. These LTPs are shown in figure 21, where it is evident that δC_{TT}^+ is anomalously low in the harmonic range [20, 31]. In the case of the common mask (see the dashed lines of figure 21), since no simulated values are lower than the observed ones in this range, we set them to half the resolution of the Monte Carlo for plotting purposes. In contrast, the corresponding odd part, δC_{TT}^- , does not exhibit any anomalous behavior. A very similar trend is observed for the inpainting mask results (see the solid lines of figure 21), where, in the same harmonic range, the LTP can be as low as 0.7%. This suggests that the even-odd asymmetry, i.e., the imbalance between even and odd multipoles, can be interpreted as a lack of power in the even multipoles, while odd multipoles remain well within expectations, see, e.g., ref. [46].

If we now construct the estimators $\delta C_{EE}^{+/-}$ considering only the temperature-correlated part of the E mode signal, we observe a behaviour similar to that shown in figure 21. Specifically, for the common mask, the LTP for δC_{EE}^+ is below 1% within the harmonic range [22, 31] and drops as low as 0.5% for $\ell_{\max} \in [26, 31]$, while δC_{EE}^- does not exhibit any anomaly, i.e., its LTP remains above 63% in the same range. Similarly, for the inpainting mask, we find that the LTP for δC_{EE}^+ is around 1% in the harmonic range [22, 29] and can be as low as 0.7% for $\ell_{\max} \in [26, 27]$, while the LTP for δC_{EE}^- remains above 69.8% in the same harmonic range. This demonstrates that $\delta C_{EE}^{+/-}$ does capture the even-odd parity asymmetry when constructed using the temperature-correlated part of the E mode signal.

B Angular profile binning of peaks

We investigate various binning schemes to minimise the uncertainty in the peak amplitude. We consider eight distinct binning schemes, in which the angular profile is determined within annuli that cover the range from 0 to 60° , each having a uniform width denoted as $\Delta\theta = \theta_{\max} - \theta_{\min}$. To assess the uncertainty in the peak amplitude, we employ the ensemble-averaged angular profile of eq. (C.10) and its corresponding covariance matrix, eq. (C.10), to calculate σ_A in eq. (9.2) for the various binning schemes under consideration. We perform this

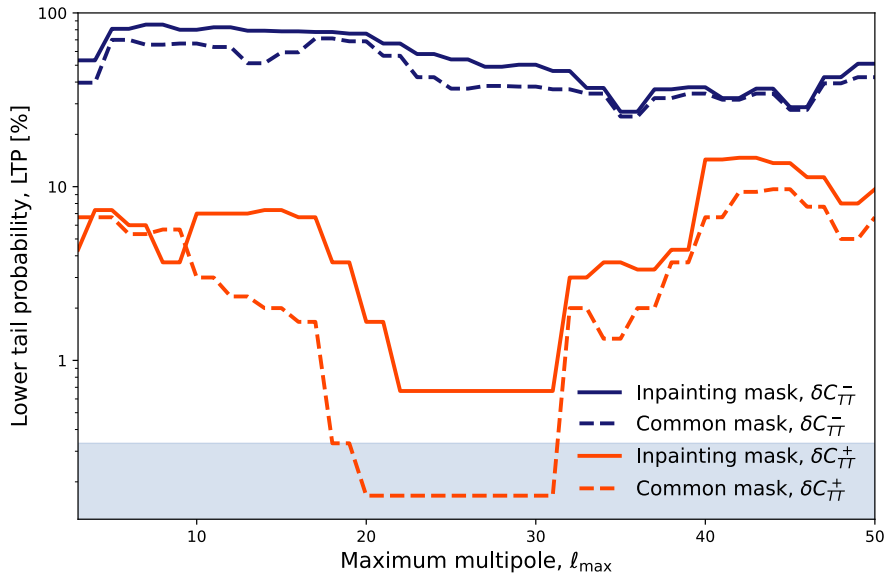


Figure 21. Lower tail probabilities obtained from SMICA *Planck* data in TT . Blue lines are obtained from δC_{TT}^- and orange lines from δC_{TT}^+ . Dashed lines present results derived using the common mask, solid lines for the inpainting mask. The shaded area corresponds to the resolution of the Monte Carlo simulations, due to the number of simulations.

study using the peak characteristics of the CS, i.e., the normalised amplitude and curvature are $\nu = -1.45$ and $\kappa = -4.26$ respectively. The results are illustrated in figure 22.

Figure 22 shows that the uncertainty in the amplitude A can be reduced by opting for a binning scheme comprising more smaller rings as opposed to one with fewer larger rings. Nonetheless, the choice of ring size cannot be arbitrarily small, since a sufficient number of pixels within the ring is required for the computation of the angular profile from the maps. Figure 23 presents the number of pixels N_{pix} within each annulus as a function of $\hat{\theta}$. The values of N_{pix} are illustrated for the various binning configurations considered, and this information is provided for two different map resolutions, specifically $N_{\text{side}} = 512$ (solid lines) and $N_{\text{side}} = 64$ (dashed lines). For the $N_{\text{side}} = 64$ resolution, it becomes evident that there are insufficient pixels in the rings situated closer to the peak centre for binning schemes characterised by small $\Delta\theta$. Therefore, we choose to proceed with a map resolution of $N_{\text{side}} = 512$ for this analysis, even though only one inpainted map is then available. Consequently, while results for all peaks are presented, our primary focus is directed toward Peaks 4 and 5, which are the peaks furthest from the Galactic plane and hence less impacted by the inpainting realisation.

C Theoretical Q_{r0} angular profile

In this appendix, we present the theoretical equations used to calculate the Q_{r0} angular profile and covariance matrix used in section 9. We follow the equations derived from refs. [51, 53].

The Q_{r0} theoretical angular profile is given as

$$\langle Q_{r0}(\theta) \rangle = - \sum_{\ell=2}^{\infty} \frac{2\ell+1}{4\pi} \sqrt{\frac{(\ell-2)!}{(\ell+2)!}} \left[b_{\nu} + b_{\kappa} \frac{(\ell+1)!}{(\ell-1)!} \right] b_{\ell} w_{\ell}(R) C_{\ell}^{TE} P_{\ell}^2(\mu(\theta)), \quad (\text{C.1})$$

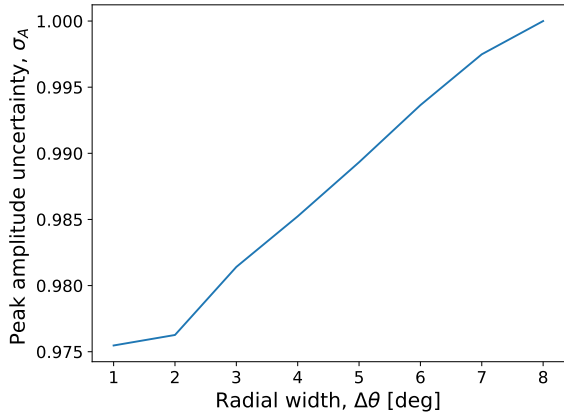


Figure 22. Normalised ensemble averaged σ_A as a function of the uniform difference between the outer and inner radii of the ring scheme considered.

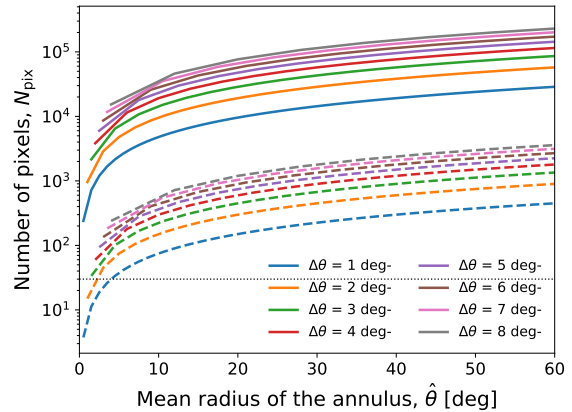


Figure 23. Number of pixels in a ring as a function of the average angle subtended with respect to the peak's centre for different binning schemes.

where P_ℓ^2 is the Legendre polynomial of order 2 and degree ℓ , b_ℓ is the effective window function of the map, $\mu = \cos\theta$ where θ is the angle subtended from the peak's centre to the direction where the angular profile is calculated, and $w_\ell(R)$ is the window function used to emphasise a specific map scale, parametrised by R . It is derived from the Fourier coefficients of the stereographic projection of a two-dimensional Euclidean Gaussian distribution:

$$w_\ell(R) = \exp\left[-\frac{\ell(\ell+1)}{2R^2}\right]. \quad (\text{C.2})$$

In this context, R represents the standard deviation of a two-dimensional Gaussian function in Euclidean space. b_ν and b_κ are the bias parameters and are given as

$$\begin{pmatrix} b_\nu \sigma_\nu \\ b_\kappa \sigma_\kappa \end{pmatrix} = \begin{pmatrix} 1 & \rho \\ \rho & 1 \end{pmatrix}^{-1} \begin{pmatrix} \nu \\ \kappa \end{pmatrix}, \quad (\text{C.3})$$

where ν and κ are the amplitude and the curvature of the peak calculated from the temperature map smoothed with $w_\ell(R)$ and

$$\sigma_\nu^2 = \sum_\ell \frac{2\ell+1}{4\pi} w_\ell(R)^2 C_\ell^{TT}, \quad (\text{C.4})$$

$$\sigma_\kappa^2 = \sum_\ell \frac{2\ell+1}{4\pi} \left(\frac{(\ell+1)!}{(\ell-1)!}\right)^2 w_\ell(R)^2 C_\ell^{TT}, \quad (\text{C.5})$$

$$\sigma_\eta^2 = \sum_\ell \frac{2\ell+1}{4\pi} \left(\frac{(\ell+1)!}{(\ell-1)!}\right) w_\ell(R)^2 C_\ell^{TT}, \quad (\text{C.6})$$

$$\rho = \frac{\sigma_\eta^2}{\sigma_\nu \sigma_\kappa}. \quad (\text{C.7})$$

Since we are calculating the Q_{r0} in angular rings ($\mathcal{A}(\hat{n}_{\text{ref}}, \theta_{\text{min}}, \theta_{\text{max}})$) we need to integrate eq. (C.1) between θ_{min} and θ_{max} . Reference [52] provides analytic formulae of the integral of

Legendre polynomials, which we can use to obtain an analytic equation of the angular profile

$$\langle Q_{r0}(\hat{\theta}) \rangle = - \sum_{\ell=2}^{\infty} \sqrt{\frac{2\ell+1}{4\pi}} \left[b_\nu + b_\kappa \frac{(\ell+1)!}{(\ell-1)!} \right] b_\ell w_\ell(R) C_\ell^{TE} \widehat{\Delta I}_\ell^2(\hat{\mu}(\theta)), \quad (\text{C.8})$$

where $\hat{\mu}(\theta) = \cos \hat{\theta}$ and $\hat{\theta}$ is the average angle in a given angular ring $\mathcal{A}(\hat{n}_{\text{ref}}, \theta_{\text{min}}, \theta_{\text{max}})$. $\widehat{\Delta I}_\ell^2(\hat{\mu}(\theta))$ is given as

$$\frac{1}{\mu_{\text{max}} - \mu_{\text{min}}} \int_{\mu_{\text{min}}}^{\mu_{\text{max}}} dx P_\ell^2(x) = \sqrt{\frac{4\pi}{2\ell+1}} \sqrt{\frac{(\ell+2)!}{(\ell-2)!}} \frac{I_\ell^2(\mu_{\text{max}}) - I_\ell^2(\mu_{\text{min}})}{\mu_{\text{max}} - \mu_{\text{min}}}, \quad (\text{C.9})$$

$$= \sqrt{\frac{4\pi}{2\ell+1}} \sqrt{\frac{(\ell+2)!}{(\ell-2)!}} \widehat{\Delta I}_\ell^2(\hat{\mu}), \quad (\text{C.10})$$

where,

$$I_\ell^2(\mu) = \frac{1}{\sqrt{(\ell+2)(\ell+1)\ell(\ell-1)}} \left[-2I_\ell^0(\mu) + (\ell+3)\mu\bar{P}_\ell(\mu) - (\ell+1)\sqrt{\frac{2\ell+1}{2\ell+3}}\bar{P}_{\ell+1}(\mu) \right], \quad (\text{C.11})$$

$$I_\ell^0(\mu) = \frac{1}{\sqrt{(2\ell+1)(2\ell+3)}}\bar{P}_{\ell+1} - \frac{1}{\sqrt{(2\ell+1)(2\ell-1)}}\bar{P}_{\ell-1}, \quad (\text{C.12})$$

$$\bar{P}_\ell(\mu) = \sqrt{\frac{2\ell+1}{4\pi}} P_\ell(\mu). \quad (\text{C.13})$$

As shown in ref. [53], the covariance matrix has two contributions: an intrinsic contribution that accounts for the inherent correlations between multipolar profiles independently of the existence of a peak; and a peak contribution that modifies the intrinsic covariance to account for the fact that a peak is present in the field. The intrinsic Q_{r0} covariance matrix is

$$C_{ij}^{\text{intr}}(\theta_i, \theta_j) = C_{ij}^{\text{intr}} = \sum_{\ell=2}^{\infty} \frac{2\ell+1}{4\pi} \frac{(\ell-2)!}{(\ell+2)!} b_\ell^2 C_\ell^{EE} P_\ell^2(\mu(\theta_i)) P_\ell^2(\mu(\theta_j)), \quad (\text{C.14})$$

where θ_i is the angle subtended from the peak's centre to the direction where the angular profile is calculated. After integrating over the θ in the rings $\mathcal{A}_i(\hat{n}_{\text{ref}}, \theta_{\text{min},i}, \theta_{\text{max},i})$, and $\mathcal{A}_j(\hat{n}_{\text{ref}}, \theta_{\text{min},j}, \theta_{\text{max},j})$ we obtain

$$C_{ij}^{\text{intr}} = \sum_{\ell=2} b_\ell^2 C_\ell^{EE} \widehat{\Delta I}_\ell^2(\hat{\mu}_i) \widehat{\Delta I}_\ell^2(\hat{\mu}_j). \quad (\text{C.15})$$

The peak contribution to the covariance matrix is

$$C_{ij}^{\text{peak}} = \sum_{\ell, \ell'} \frac{2\ell+1}{4\pi} \frac{2\ell'+1}{4\pi} \sqrt{\frac{(\ell-2)!}{(\ell+2)!}} \sqrt{\frac{(\ell'-2)!}{(\ell'+2)!}} B_{\ell\ell'} b_\ell w_\ell(R) C_\ell^{TE} b_{\ell'} w_{\ell'}(R) C_{\ell'}^{TE} P_\ell^2(\mu_i) P_{\ell'}^2(\mu_j), \quad (\text{C.16})$$

where,

$$B_{\ell\ell'} = -\frac{1}{1-\rho^2} \left[\frac{1}{\sigma_\nu^2} - \frac{\rho(\ell(\ell+1) + \ell'(\ell'+1))}{\sigma_\nu\sigma_\kappa} + \frac{(\ell(\ell+1))(\ell'(\ell'+1))}{\sigma_\kappa^2} \right]. \quad (\text{C.17})$$

After integrating over the angles in the i and j rings we recover

$$C_{ij}^{\text{peak}} = \sum_{\ell,\ell'} \sqrt{\frac{2\ell+1}{4\pi}} \sqrt{\frac{2\ell'+1}{4\pi}} B_{\ell\ell'} b_{\ell w_\ell}(R) C_\ell^{TE} b_{\ell' w_{\ell'}}(R) C_{\ell'}^{TE} \widehat{\Delta I}_\ell^2(\widehat{\mu}_i) \widehat{\Delta I}_{\ell'}^2(\widehat{\mu}_j). \quad (\text{C.18})$$

References

- [1] LITEBIRD collaboration, *Probing Cosmic Inflation with the LiteBIRD Cosmic Microwave Background Polarization Survey*, *Prog. Theor. Exp. Phys.* **2023** (2023) 042F01 [[arXiv:2202.02773](#)] [[INSPIRE](#)].
- [2] PLANCK collaboration, *Planck 2018 results. VI. Cosmological parameters*, *Astron. Astrophys.* **641** (2020) A6 [*Erratum ibid.* **652** (2021) C4] [[arXiv:1807.06209](#)] [[INSPIRE](#)].
- [3] PLANCK collaboration, *Planck 2013 results. XXIII. Isotropy and statistics of the CMB*, *Astron. Astrophys.* **571** (2014) A23 [[arXiv:1303.5083](#)] [[INSPIRE](#)].
- [4] PLANCK collaboration, *Planck 2015 results. XVI. Isotropy and statistics of the CMB*, *Astron. Astrophys.* **594** (2016) A16 [[arXiv:1506.07135](#)] [[INSPIRE](#)].
- [5] PLANCK collaboration, *Planck 2018 results. VII. Isotropy and Statistics of the CMB*, *Astron. Astrophys.* **641** (2020) A7 [[arXiv:1906.02552](#)] [[INSPIRE](#)].
- [6] C.J. Copi, D. Huterer, D.J. Schwarz and G.D. Starkman, *Large-Angle CMB Suppression and Polarization Predictions*, *Mon. Not. Roy. Astron. Soc.* **434** (2013) 3590 [[arXiv:1303.4786](#)] [[INSPIRE](#)].
- [7] D. Contreras et al., *Testing physical models for dipolar asymmetry with CMB polarization*, *Phys. Rev. D* **96** (2017) 123522 [[arXiv:1704.03143](#)] [[INSPIRE](#)].
- [8] M. O'Dwyer, C.J. Copi, L. Knox and G.D. Starkman, *CMB- S_4 and the Hemispherical Variance Anomaly*, *Mon. Not. Roy. Astron. Soc.* **470** (2017) 372 [[arXiv:1608.02234](#)] [[INSPIRE](#)].
- [9] R. Shi et al., *Testing Cosmic Microwave Background Anomalies in E-mode Polarization with Current and Future Data*, *Astrophys. J.* **945** (2023) 79 [[arXiv:2206.05920](#)] [[INSPIRE](#)].
- [10] PLANCK collaboration, *Planck 2018 results. IV. Diffuse component separation*, *Astron. Astrophys.* **641** (2020) A4 [[arXiv:1807.06208](#)] [[INSPIRE](#)].
- [11] M. Zaldarriaga and U. Seljak, *An all sky analysis of polarization in the microwave background*, *Phys. Rev. D* **55** (1997) 1830 [[astro-ph/9609170](#)] [[INSPIRE](#)].
- [12] PLANCK collaboration, *Planck 2015 results. XII. Full Focal Plane simulations*, *Astron. Astrophys.* **594** (2016) A12 [[arXiv:1509.06348](#)] [[INSPIRE](#)].
- [13] R.B. Barreiro, P. Vielva, C. Hernandez-Monteagudo and E. Martinez-Gonzalez, *A linear filter to reconstruct the ISW effect from CMB and LSS observations*, *IEEE J. Sel. Top. Signal Process.* **2** (2008) 747 [[arXiv:0809.2557](#)] [[INSPIRE](#)].
- [14] K.M. Górski et al., *HEALPix — A Framework for high resolution discretization, and fast analysis of data distributed on the sphere*, *Astrophys. J.* **622** (2005) 759 [[astro-ph/0409513](#)] [[INSPIRE](#)].

- [15] C. Gimeno-Amo, E. Martínez-González and R.B. Barreiro, *CMB-PAInT: An inpainting tool for the cosmic microwave background*, *JCAP* **09** (2024) 038 [[arXiv:2405.06820](#)] [[INSPIRE](#)].
- [16] J.L. Starck, M.J. Fadili and A. Rassat, *Low- l CMB Analysis and Inpainting*, *Astron. Astrophys.* **550** (2013) A15 [[arXiv:1210.6587](#)] [[INSPIRE](#)].
- [17] C.J. Copi, D. Huterer, D.J. Schwarz and G.D. Starkman, *Large-scale alignments from WMAP and Planck*, *Mon. Not. Roy. Astron. Soc.* **449** (2015) 3458 [[arXiv:1311.4562](#)] [[INSPIRE](#)].
- [18] C. Monteserin et al., *A low CMB variance in the WMAP data*, *Mon. Not. Roy. Astron. Soc.* **387** (2008) 209 [[arXiv:0706.4289](#)] [[INSPIRE](#)].
- [19] M. Cruz, P. Vielva, E. Martinez-Gonzalez and R.B. Barreiro, *Anomalous variance in the WMAP data and Galactic Foreground residuals*, *Mon. Not. Roy. Astron. Soc.* **412** (2011) 2383 [[arXiv:1005.1264](#)] [[INSPIRE](#)].
- [20] A. Gruppuso et al., *Low Variance at large scales of WMAP 9 year data*, *JCAP* **07** (2013) 047 [[arXiv:1304.5493](#)] [[INSPIRE](#)].
- [21] H.K. Eriksen et al., *Asymmetries in the Cosmic Microwave Background anisotropy field*, *Astrophys. J.* **605** (2004) 14 [Erratum *ibid.* **609** (2004) 1198] [[astro-ph/0307507](#)] [[INSPIRE](#)].
- [22] F.K. Hansen, A.J. Banday and K.M. Górski, *Testing the cosmological principle of isotropy: Local power spectrum estimates of the WMAP data*, *Mon. Not. Roy. Astron. Soc.* **354** (2004) 641 [[astro-ph/0404206](#)] [[INSPIRE](#)].
- [23] C.-G. Park, *Non-Gaussian Signatures in the Temperature Fluctuation Observed by the Wilkinson Microwave Anisotropy Probe*, *Mon. Not. Roy. Astron. Soc.* **349** (2004) 313 [[astro-ph/0307469](#)] [[INSPIRE](#)].
- [24] C.L. Bennett et al., *Seven-Year Wilkinson Microwave Anisotropy Probe (WMAP) Observations: Are There Cosmic Microwave Background Anomalies?*, *Astrophys. J. Suppl.* **192** (2011) 17 [[arXiv:1001.4758](#)] [[INSPIRE](#)].
- [25] C. Gimeno-Amo, R.B. Barreiro, E. Martínez-González and A. Marcos-Caballero, *Hemispherical power asymmetry in intensity and polarization for Planck PR4 data*, *JCAP* **12** (2023) 029 [[arXiv:2306.14880](#)] [[INSPIRE](#)].
- [26] Y. Akrami et al., *Power asymmetry in WMAP and Planck temperature sky maps as measured by a local variance estimator*, *Astrophys. J. Lett.* **784** (2014) L42 [[arXiv:1402.0870](#)] [[INSPIRE](#)].
- [27] M. Tegmark, A. de Oliveira-Costa and A.J. Hamilton, *A high resolution foreground cleaned CMB map from WMAP*, *Phys. Rev. D* **68** (2003) 123523 [[astro-ph/0302496](#)] [[INSPIRE](#)].
- [28] A. de Oliveira-Costa, M. Tegmark, M. Zaldarriaga and A. Hamilton, *The Significance of the largest scale CMB fluctuations in WMAP*, *Phys. Rev. D* **69** (2004) 063516 [[astro-ph/0307282](#)] [[INSPIRE](#)].
- [29] D.J. Schwarz, G.D. Starkman, D. Huterer and C.J. Copi, *Is the low- l microwave background cosmic?*, *Phys. Rev. Lett.* **93** (2004) 221301 [[astro-ph/0403353](#)] [[INSPIRE](#)].
- [30] G. Hinshaw et al., *Band power spectra in the COBE DMR 4-year anisotropy maps*, *Astrophys. J. Lett.* **464** (1996) L17 [[astro-ph/9601058](#)] [[INSPIRE](#)].
- [31] C.L. Bennett et al., *First year Wilkinson Microwave Anisotropy Probe (WMAP) observations: Preliminary maps and basic results*, *Astrophys. J. Suppl.* **148** (2003) 1 [[astro-ph/0302207](#)] [[INSPIRE](#)].
- [32] K. Land and J. Magueijo, *Is the Universe odd?*, *Phys. Rev. D* **72** (2005) 101302 [[astro-ph/0507289](#)] [[INSPIRE](#)].

- [33] J. Kim and P. Naselsky, *Anomalous parity asymmetry of the Wilkinson Microwave Anisotropy Probe power spectrum data at low multipoles*, *Astrophys. J. Lett.* **714** (2010) L265 [[arXiv:1001.4613](#)] [[INSPIRE](#)].
- [34] J. Kim and P. Naselsky, *Anomalous parity asymmetry of WMAP power spectrum data at low multipoles: is it cosmological or systematics?*, *Phys. Rev. D* **82** (2010) 063002 [[arXiv:1002.0148](#)] [[INSPIRE](#)].
- [35] A. Gruppuso et al., *New constraints on Parity Symmetry from a re-analysis of the WMAP-7 low resolution power spectra*, *Mon. Not. Roy. Astron. Soc.* **411** (2011) 1445 [[arXiv:1006.1979](#)] [[INSPIRE](#)].
- [36] G. Hinshaw et al., *2-point correlations in the COBE DMR 4-year anisotropy maps*, *Astrophys. J. Lett.* **464** (1996) L25 [[astro-ph/9601061](#)] [[INSPIRE](#)].
- [37] D.N. Spergel et al., *First year Wilkinson Microwave Anisotropy Probe (WMAP) observations: Determination of cosmological parameters*, *Astrophys. J. Suppl.* **148** (2003) 175 [[astro-ph/0302209](#)] [[INSPIRE](#)].
- [38] A. Bernui et al., *On the CMB large-scales angular correlations*, *Astron. Astrophys.* **454** (2006) 409 [[astro-ph/0601593](#)] [[INSPIRE](#)].
- [39] C. Copi, D. Huterer, D. Schwarz and G. Starkman, *The Uncorrelated Universe: Statistical Anisotropy and the Vanishing Angular Correlation Function in WMAP Years 1-3*, *Phys. Rev. D* **75** (2007) 023507 [[astro-ph/0605135](#)] [[INSPIRE](#)].
- [40] C.J. Copi, D. Huterer, D.J. Schwarz and G.D. Starkman, *No large-angle correlations on the non-Galactic microwave sky*, *Mon. Not. Roy. Astron. Soc.* **399** (2009) 295 [[arXiv:0808.3767](#)] [[INSPIRE](#)].
- [41] G. Efstathiou, Y.-Z. Ma and D. Hanson, *Large-Angle Correlations in the Cosmic Microwave Background*, *Mon. Not. Roy. Astron. Soc.* **407** (2010) 2530 [[arXiv:0911.5399](#)] [[INSPIRE](#)].
- [42] A. Gruppuso, *Two-point correlation function of Wilkinson Microwave Anisotropy Probe 9-yr data*, *Mon. Not. Roy. Astron. Soc.* **437** (2014) 2076 [[arXiv:1310.2822](#)] [[INSPIRE](#)].
- [43] J.D. Bilbao-Ahedo et al., *ECLIPSE: a fast Quadratic Maximum Likelihood estimator for CMB intensity and polarization power spectra*, *JCAP* **07** (2021) 034 [[arXiv:2104.08528](#)] [[INSPIRE](#)].
- [44] M. Tegmark and A. de Oliveira-Costa, *How to measure CMB polarization power spectra without losing information*, *Phys. Rev. D* **64** (2001) 063001 [[astro-ph/0012120](#)] [[INSPIRE](#)].
- [45] P.K. Aluri and P. Jain, *Parity Asymmetry in the CMBR Temperature Power Spectrum*, *Mon. Not. Roy. Astron. Soc.* **419** (2012) 3378 [[arXiv:1108.5894](#)] [[INSPIRE](#)].
- [46] A. Gruppuso et al., *The Evens and Odds of CMB Anomalies*, *Phys. Dark Univ.* **20** (2018) 49 [[arXiv:1712.03288](#)] [[INSPIRE](#)].
- [47] C.L. Bennett et al., *Four year COBE DMR cosmic microwave background observations: Maps and basic results*, *Astrophys. J. Lett.* **464** (1996) L1 [[astro-ph/9601067](#)] [[INSPIRE](#)].
- [48] C. Chiocchetta et al., *Lack-of-correlation anomaly in CMB large scale polarisation maps*, *JCAP* **08** (2021) 015 [[arXiv:2012.00024](#)] [[INSPIRE](#)].
- [49] P. Vielva et al., *Detection of Non-Gaussianity in the Wilkinson Microwave Anisotropy Probe First-Year Data Using Spherical Wavelets*, *Astrophys. J.* **609** (2004) 22 [[astro-ph/0310273](#)] [[INSPIRE](#)].
- [50] M. Cruz, E. Martínez-González, P. Vielva and L. Cayón, *Detection of a non-Gaussian spot in WMAP*, *Mon. Not. Roy. Astron. Soc.* **356** (2005) 29 [[astro-ph/0405341](#)] [[INSPIRE](#)].

- [51] A. Marcos-Caballero, E. Martínez-González and P. Vielva, *Multiscale analysis of the CMB temperature derivatives*, *JCAP* **02** (2017) 026 [[arXiv:1701.08548](#)] [[INSPIRE](#)].
- [52] A. Marcos-Caballero, E. Martínez-González and P. Vielva, *Local properties of the large-scale peaks of the CMB temperature*, *JCAP* **05** (2017) 023 [[arXiv:1701.08552](#)] [[INSPIRE](#)].
- [53] A. Marcos-Caballero, R. Fernández-Cobos, E. Martínez-González and P. Vielva, *The shape of CMB temperature and polarization peaks on the sphere*, *JCAP* **04** (2016) 058 [[arXiv:1512.07412](#)] [[INSPIRE](#)].
- [54] P. Diego-Palazuelos et al., *Cosmic Birefringence from the Planck Data Release 4*, *Phys. Rev. Lett.* **128** (2022) 091302 [[arXiv:2201.07682](#)] [[INSPIRE](#)].
- [55] A. Zonca et al., *healpy: equal area pixelization and spherical harmonics transforms for data on the sphere in Python*, *J. Open Source Softw.* **4** (2019) 1298 [[INSPIRE](#)].
- [56] C.R. Harris et al., *Array programming with NumPy*, *Nature* **585** (2020) 357 [[arXiv:2006.10256](#)] [[INSPIRE](#)].
- [57] J.D. Hunter, *Matplotlib: A 2D Graphics Environment*, *Comput. Sci. Eng.* **9** (2007) 90 [[INSPIRE](#)].

The LiteBIRD collaboration

A.J. Banday¹, C. Gimeno-Amo², P. Diego-Palazuelos³, E. de la Hoz⁴, A. Gruppuso^{5,6}, N. Raffuzzi⁷, E. Martínez-González², P. Vielva², R.B. Barreiro², M. Bortolami^{7,8}, C. Chiocchetta⁷, G. Galloni^{7,9}, D. Scott¹⁰, R.M. Sullivan¹¹, D. Adak¹², E. Allys¹³, A. Anand⁹, J. Aumont¹, C. Baccigalupi^{14,15,16}, M. Ballardini^{7,8,5}, N. Bartolo^{17,18,19}, S. Basak²⁰, M. Bersanelli^{21,22}, A. Besnard²³, D. Blinov^{24,25}, F. Bouchet²⁶, T. Brinckmann⁷, F. Cacciotti²⁷, E. Calabrese²⁸, P. Campeti^{8,3,29}, A. Carones^{14,15}, F.J. Casas², K. Cheung^{30,31,32,33}, M. Citran³⁴, L. Clermont³⁵, F. Columbro^{27,36}, A. Coppolecchia^{27,36}, P. de Bernardis^{27,36}, M. De Lucia³⁷, S. Della Torre³⁸, E. Di Giorgi³⁷, H.K. Eriksen¹¹, F. Finelli^{5,6}, C. Franceschet^{21,22}, U. Fuskeland¹¹, M. Galloway¹¹, M. Gervasi^{39,38}, R.T. Génova-Santos^{12,40}, T. Ghigna^{41,42}, S. Giardiello²⁸, M. Hazumi^{43,44,42,45}, L.T. Hergt^{10,46}, E. Hivon²⁶, K. Ichiki⁴⁷, H. Ishino⁴⁸, B. Jost⁴², K. Kohri⁴³, L. Lamagna^{27,36}, M. Lattanzi⁸, C. Leloup⁴², F. Levrier¹³, A.I. Lonappan⁴⁹, M. López-Caniego^{50,51}, G. Luzzi⁵², J. Macias-Perez⁵³, V. Maranchery^{52,27,9}, S. Masi^{27,36}, S. Matarrese^{17,18,19,54}, T. Matsumura⁴², S. Micheli²⁷, M. Migliaccio^{9,55}, M. Monelli⁴², L. Montier¹, G. Morgante⁵, M. Najafi²⁷, T. Namikawa⁴², A. Novelli^{39,27}, I. Obata⁴³, A. Occhiuzzi²⁷, A. Paiella^{27,36}, D. Paoletti^{5,6}, G. Pascual-Cisneros^{42,2}, F. Piacentini^{27,36}, G. Piccirilli⁹, G. Polenta⁵², L. Porcelli⁵⁶, M. Remazeilles², A. Rizzieri^{57,34}, J.A. Rubiño-Martín^{12,40}, M. Ruiz-Granda^{2,58}, Y. Sakurai^{59,42}, J. Sanghavi^{60,61}, M. Shiraishi⁵⁹, G. Signorelli^{62,37}, Y. Takase⁴⁸, L. Terenzi⁵, M. Tomasi^{21,22}, M. Tristram⁴⁶, L. Vacher¹⁴, B. van Tent⁴⁶, I.K. Wehus¹¹, G. Weymann-Despres^{57,46}, E.J. Wollack⁶³, Y. Zhou⁴¹

¹ IRAP, Université de Toulouse, CNRS, CNES, UPS, Toulouse, France

² Instituto de Física de Cantabria (IFCA, CSIC-UC), Avenida los Castros SN, 39005, Santander, Spain

³ Max Planck Institute for Astrophysics, Karl-Schwarzschild-Str. 1, D-85748 Garching, Germany

⁴ CNRS-UCB International Research Laboratory, Centre Pierre Binétruy, UMI2007, Berkeley, CA 94720, U.S.A.

⁵ INAF - OAS Bologna, via Piero Gobetti, 93/3, 40129 Bologna, Italy

⁶ INFN Sezione di Bologna, Viale C. Berti Pichat, 6/2 - 40127 Bologna, Italy

⁷ Dipartimento di Fisica e Scienze della Terra, Università di Ferrara, Via Saragat 1, 44122 Ferrara, Italy

⁸ INFN Sezione di Ferrara, Via Saragat 1, 44122 Ferrara, Italy

⁹ Dipartimento di Fisica, Università di Roma Tor Vergata, Via della Ricerca Scientifica, 1, 00133, Roma, Italy

¹⁰ Department of Physics and Astronomy, University of British Columbia, 6224 Agricultural Road, Vancouver, BC V6T1Z1, Canada

¹¹ Institute of Theoretical Astrophysics, University of Oslo, Blindern, Oslo, Norway

¹² Instituto de Astrofísica de Canarias, E-38200 La Laguna, Tenerife, Canary Islands, Spain

¹³ Laboratoire de Physique de l'École Normale Supérieure, ENS, Université PSL, CNRS, Sorbonne Université, Université de Paris, 75005 Paris, France

¹⁴ International School for Advanced Studies (SISSA), Via Bonomea 265, 34136, Trieste, Italy

¹⁵ INFN Sezione di Trieste, via Valerio 2, 34127 Trieste, Italy

¹⁶ IFPU, Via Beirut, 2, 34151 Grignano, Trieste, Italy

¹⁷ Dipartimento di Fisica e Astronomia "G. Galilei", Università degli Studi di Padova, via Marzolo 8, I-35131 Padova, Italy

¹⁸ INFN Sezione di Padova, via Marzolo 8, I-35131, Padova, Italy

¹⁹ INAF, Osservatorio Astronomico di Padova, Vicolo dell'Osservatorio 5, I-35122, Padova, Italy

²⁰ School of Physics, Indian Institute of Science Education and Research Thiruvananthapuram, Maruthamala PO, Vithura, Thiruvananthapuram 695551, Kerala, India

²¹ Dipartimento di Fisica, Università degli Studi di Milano, Via Celoria 16 - 20133, Milano, Italy

²² INFN Sezione di Milano, Via Celoria 16 - 20133, Milano, Italy

- ²³ *Université Paris-Saclay, CNRS, Institut d'Astrophysique Spatiale, 91405, Orsay, France*
- ²⁴ *Institute of Astrophysics, Foundation for Research and Technology – Hellas, Vasilika Vouton, GR-70013 Heraklion, Greece*
- ²⁵ *Department of Physics and ITCP, University of Crete, GR-70013, Heraklion, Greece*
- ²⁶ *Institut d'Astrophysique de Paris, CNRS/Sorbonne Université, Paris, France*
- ²⁷ *Dipartimento di Fisica, Università La Sapienza, P. le A. Moro 2, Roma, Italy*
- ²⁸ *School of Physics and Astronomy, Cardiff University, Cardiff CF24 3AA, U.K.*
- ²⁹ *Excellence Cluster ORIGINS, Boltzmannstr. 2, 85748 Garching, Germany*
- ³⁰ *Jodrell Bank Centre for Astrophysics, Alan Turing Building, Department of Physics and Astronomy, School of Natural Sciences, The University of Manchester, Oxford Road, Manchester M13 9PL, U.K.*
- ³¹ *University of California, Berkeley, Department of Physics, Berkeley, CA 94720, U.S.A.*
- ³² *University of California, Berkeley, Space Sciences Laboratory, Berkeley, CA 94720, U.S.A.*
- ³³ *Lawrence Berkeley National Laboratory (LBNL), Computational Cosmology Center, Berkeley, CA 94720, U.S.A.*
- ³⁴ *Université Paris Cité, CNRS, Astroparticule et Cosmologie, F-75013 Paris, France*
- ³⁵ *Centre Spatial de Liège, Université de Liège, Avenue du Pré-Aily, 4031 Angleur, Belgium*
- ³⁶ *INFN Sezione di Roma, P.le A. Moro 2, 00185 Roma, Italy*
- ³⁷ *INFN Sezione di Pisa, Largo Bruno Pontecorvo 3, 56127 Pisa, Italy*
- ³⁸ *INFN Sezione Milano Bicocca, Piazza della Scienza, 3, 20126 Milano, Italy*
- ³⁹ *University of Milano Bicocca, Physics Department, p.zza della Scienza, 3, 20126 Milan, Italy*
- ⁴⁰ *Departamento de Astrofísica, Universidad de La Laguna (ULL), E-38206, La Laguna, Tenerife, Spain*
- ⁴¹ *International Center for Quantum-field Measurement Systems for Studies of the Universe and Particles (QUP), High Energy Accelerator Research Organization (KEK), Tsukuba, Ibaraki 305-0801, Japan*
- ⁴² *Kavli Institute for the Physics and Mathematics of the Universe (Kavli IPMU, WPI), UTIAS, The University of Tokyo, Kashiwa, Chiba 277-8583, Japan*
- ⁴³ *Institute of Particle and Nuclear Studies (IPNS), High Energy Accelerator Research Organization (KEK), Tsukuba, Ibaraki 305-0801, Japan*
- ⁴⁴ *Japan Aerospace Exploration Agency (JAXA), Institute of Space and Astronautical Science (ISAS), Sagami-hara, Kanagawa 252-5210, Japan*
- ⁴⁵ *The Graduate University for Advanced Studies (SOKENDAI), Miura District, Kanagawa 240-0115, Hayama, Japan*
- ⁴⁶ *Université Paris-Saclay, CNRS/IN2P3, IJCLab, 91405 Orsay, France*
- ⁴⁷ *Nagoya University, Kobayashi-Masukawa Institute for the Origin of Particle and the Universe, Aichi 464-8602, Japan*
- ⁴⁸ *Okayama University, Department of Physics, Okayama 700-8530, Japan*
- ⁴⁹ *University of California, San Diego, Department of Physics, San Diego, CA 92093-0424, U.S.A.*
- ⁵⁰ *Aurora Technology for the European Space Agency, Camino bajo del Castillo, s/n, Urbanización Villafranca del Castillo, Villanueva de la Cañada, Madrid, Spain*
- ⁵¹ *Universidad Europea de Madrid, 28670, Madrid, Spain*
- ⁵² *Space Science Data Center, Italian Space Agency, via del Politecnico, 00133, Roma, Italy*
- ⁵³ *Université Grenoble Alpes, CNRS, LPSC-IN2P3, 53, avenue des Martyrs, 38000 Grenoble, France*
- ⁵⁴ *Gran Sasso Science Institute (GSSI), Viale F. Crispi 7, I-67100, L'Aquila, Italy*
- ⁵⁵ *INFN Sezione di Roma2, Università di Roma Tor Vergata, via della Ricerca Scientifica, 1, 00133 Roma, Italy*
- ⁵⁶ *Istituto Nazionale di Fisica Nucleare–Laboratori Nazionali di Frascati (INFN–LNF), Via E. Fermi 40, 00044, Frascati, Italy*
- ⁵⁷ *Department of Physics, University of Oxford, Denys Wilkinson Building, Keble Road, Oxford OX1 3RH, U.K.*
- ⁵⁸ *Departamento de Física Moderna, Universidad de Cantabria, Avda. los Castros s/n, E-39005 Santander, Spain*
- ⁵⁹ *Suwa University of Science, Chino, Nagano 391-0292, Japan*
- ⁶⁰ *Universitäts-Sternwarte, Fakultät für Physik, Ludwig-Maximilians Universität München, Scheinerstr.1, 81679 München, Germany*

⁶¹ *GRAPPA, Institute for Theoretical Physics Amsterdam, University of Amsterdam, Science Park 904, 1098 XH Amsterdam, The Netherlands*

⁶² *Dipartimento di Fisica, Università di Pisa, Largo B. Pontecorvo 3, 56127 Pisa, Italy*

⁶³ *NASA Goddard Space Flight Center, Greenbelt, MD 20771, U.S.A.*