



# The Hazy and Metal-rich Atmosphere of GJ 1214 b Constrained by Near- and Mid-infrared Transmission Spectroscopy

Peter Gao<sup>1</sup> , Anjali A. A. Piette<sup>1</sup> , Maria E. Steinrueck<sup>2</sup> , Matthew C. Nixon<sup>3</sup> , Michael Zhang<sup>4,12</sup> ,  
Eliza M.-R. Kempton<sup>3</sup> , Jacob L. Bean<sup>4</sup> , Emily Rauscher<sup>5</sup> , Vivien Parmentier<sup>6,7</sup> , Natasha E. Batalha<sup>8</sup> ,  
Arjun B. Savel<sup>3,9</sup> , Anastasia Triantafyllides<sup>3</sup> , Michael T. Roman<sup>10</sup> , Isaac Malsky<sup>5</sup> , and Jake Taylor<sup>6,11</sup>

<sup>1</sup> Earth & Planets Laboratory, Carnegie Institution for Science, Washington, DC, USA; [pgao@carnegiescience.edu](mailto:pgao@carnegiescience.edu)

<sup>2</sup> Max-Planck-Institut für Astronomie, Heidelberg, Germany

<sup>3</sup> Department of Astronomy, University of Maryland, College Park, MD, USA

<sup>4</sup> Department of Astronomy & Astrophysics, University of Chicago, Chicago, IL, USA

<sup>5</sup> Department of Astronomy, University of Michigan, Ann Arbor, MI, USA

<sup>6</sup> Department of Physics, University of Oxford, Oxford, UK

<sup>7</sup> Université Côte d'Azur, Observatoire de la Côte d'Azur, CNRS, Laboratoire Lagrange, France

<sup>8</sup> NASA Ames Research Center, Moffett Field, CA, USA

<sup>9</sup> Center for Computational Astrophysics, Flatiron Institute, New York, NY, USA

<sup>10</sup> School of Physics and Astronomy, University of Leicester, Leicester, UK

<sup>11</sup> Institut Trottier de Recherche sur les Exoplanètes and Département de Physique, Université de Montréal, Montréal, QC, Canada

Received 2023 March 12; revised 2023 April 20; accepted 2023 April 27; published 2023 July 5

## Abstract

The near-infrared transmission spectrum of the warm sub-Neptune exoplanet GJ 1214 b has been observed to be flat and featureless, implying a high metallicity atmosphere with abundant aerosols. Recent JWST MIRI Low Resolution Spectrometer observations of a phase curve of GJ 1214 b showed that its transmission spectrum is flat out into the mid-infrared. In this paper, we use the combined near- and mid-infrared transmission spectrum of GJ 1214 b to constrain its atmospheric composition and aerosol properties. We generate a grid of photochemical haze models using an aerosol microphysics code for a number of background atmospheres spanning metallicities from 100 to 1000× solar, as well as a steam atmosphere scenario. The flatness of the combined data set largely rules out atmospheric metallicities  $\leq 300\times$  solar due to their large corresponding molecular feature amplitudes, preferring values  $\geq 1000\times$  solar and column haze production rates  $\geq 10^{-10}$  g cm<sup>-2</sup> s<sup>-1</sup>. The steam atmosphere scenario with similarly high haze production rates also exhibits sufficiently small molecular features to be consistent with the transmission spectrum. These compositions imply that atmospheric mean molecular weights  $\geq 15$  g mol<sup>-1</sup> are needed to fit the data. Our results suggest that haze production is highly efficient on GJ 1214 b and could involve non-hydrocarbon, non-nitrogen haze precursors. Further characterization of GJ 1214 b's atmosphere would likely require multiple transits and eclipses using JWST across the near- and mid-infrared, potentially complemented by ground-based high-resolution transmission spectroscopy.

*Unified Astronomy Thesaurus concepts:* [Exoplanet atmospheres \(487\)](#)

## 1. Introduction

The nature of the quintessential sub-Neptune GJ 1214 b has been a mystery since its discovery (Charbonneau et al. 2009). Sitting on the larger-radii side of the radius gap (Van Eylen et al. 2018), GJ 1214 b has been inferred to be either a gas dwarf or a water world (Miller-Ricci & Fortney 2010; Rogers & Seager 2010; Nettelmann et al. 2011; Valencia et al. 2013; Luque & Pallé 2022; Rogers et al. 2023). In an effort to characterize its atmosphere and shed light on its interior, a large number of ground and space-based transmission spectroscopy programs have been conducted, focusing mostly on optical and near-infrared (NIR) wavelengths due to instrumental limitations (e.g., Bean et al. 2010, 2011; Crossfield et al. 2011; Désert et al. 2011; Berta et al. 2012; de Mooij et al. 2012; Colón & Gaidos 2013; Fraine et al. 2013; Narita et al. 2013; Teske et al. 2013; Kreidberg et al. 2014; Wilson et al. 2014).

However, to date all transmission spectra have been flat and featureless, or otherwise contaminated by stellar effects (Rackham et al. 2017), suggesting the presence of high-altitude aerosols and a high mean molecular weight atmosphere (Kreidberg et al. 2014).

Aerosol models that attempted to explain the flat transmission spectrum of GJ 1214 b can be roughly divided into two groups: those relying on clouds condensed out of trace gases in the atmosphere (Morley et al. 2013; Charnay et al. 2015b; Morley et al. 2015; Gao & Benneke 2018; Ohno & Okuzumi 2018; Ohno et al. 2020; Christie et al. 2022) and those simulating hazes formed from photochemical reactions (Miller-Ricci Kempton et al. 2012; Morley et al. 2013, 2015; Adams et al. 2019; Kawashima et al. 2019; Lavvas et al. 2019). In general, the cloud models considered salt and sulfide clouds like KCl and ZnS, while the haze models used optical and physical properties of soots from combustion experiments and Titan tholins (Morley et al. 2015). Both sets of models required high atmospheric metallicities, and high photochemical production rates in the case of hazes, to match the NIR data. These models also frequently predicted a decrease in aerosol opacity—and thus the appearance of spectral features from atmospheric gases—at longer wavelengths, owing to the small sizes

<sup>12</sup> 51 Pegasi b fellow.



needed for the aerosol particles to remain aloft at the high altitudes/low pressures suggested by the featureless NIR spectra. These models thus motivated observations at longer, mid-infrared (MIR) wavelengths.

Kempton et al. (2023) presented a 5–12  $\mu\text{m}$  phase curve of GJ 1214 b measured by the JWST Mid-Infrared Instrument (MIRI) Low Resolution Spectrometer (LRS; Kendrew et al. 2015). The inferred day and nightside temperatures were  $553 \pm 9$  K and  $437 \pm 19$  K, respectively, which were significantly lower than GJ 1214 b’s equilibrium temperature ( $596 \pm 19$  K, assuming zero Bond albedo and full heat redistribution; Cloutier et al. 2021), suggesting the presence of highly reflective aerosols. Free chemical retrievals of the day and nightside emission spectra showed tentative detections of water vapor. Comparison of the measured day and nightside emission spectra and the full phase curve to 3D general circulation models that included reflective hazes showed that a high mean molecular weight atmosphere, corresponding to metallicities of  $\geq 100\times$  solar, are needed to explain the data.

The transmission spectrum obtained from the phase curve measurements is flat and featureless, and at nearly the same band-integrated transit depth as the NIR data. A fit of the hazy GCM models to the combined NIR and MIRI transmission spectrum pointed to atmospheric metallicities  $>1000\times$  solar, but only limited haze properties were explored in those models (Kempton et al. 2023). In this paper, we conduct a more in depth data model comparison using a grid of haze microphysical models in order to ascertain the extent to which the NIR-to-MIR transmission spectrum of GJ 1214 b can constrain its atmospheric composition and haze properties.

In Section 2, we describe how we generate our model grid. We compare our computed model transmission spectra to data in Section 3 and determine to what extent they constrain atmospheric composition and haze production rate. In Section 4 we discuss the implications of our results, what our models are missing, and what additional observational tests are needed to further improve our understanding of GJ 1214 b. We state our conclusions in Section 5.

## 2. Models

### 2.1. Modeling Strategy

In order to generate hazy model transmission spectra to compare to the observations, we make use of a series of one-dimensional atmospheric models, with the outputs of one feeding into the next. To begin, we compute atmospheric temperature–pressure (TP) profiles using GENESIS (Gandhi & Madhusudhan 2017; Piette & Madhusudhan 2020) and chemical abundance profiles using FASTCHEM 2 (Stock et al. 2022), assuming thermochemical equilibrium without rainout/condensation and a cloud/haze-free atmosphere, for a specific set of atmospheric compositions. The TP profiles are used to initialize the microphysical aerosol model CARMA (Turco et al. 1979; Toon et al. 1988; Jacobson & Turco 1994; Ackerman et al. 1995), which simulates the particle size and vertical distribution of hazes. Assuming spherical particles, we then use a Mie code (bhmie; Bohren & Huffman 2008) to generate the optical depth, single scattering albedo, and asymmetry parameter as a function of pressure level and wavelength from the particle distributions. Finally, the particle optical properties and TP and chemical abundance profiles are fed into PICASO 3.0 (Mukherjee et al. 2023) to generate the transmission

**Table 1**  
Planetary and Stellar Parameters for GJ 1214 b Used in This Work

Quantity	Value	Source
Stellar effective temperature	3250 K	Kempton et al. (2023)
Stellar $\log(g)$	5.0	Kempton et al. (2023)
Stellar metallicity	+0.2	Kempton et al. (2023)
Stellar radius	0.207 $R_{\odot}$	... <sup>a</sup>
Planet radius	2.628 $R_{\oplus}$ <sup>b</sup>	Cloutier et al. (2021) <sup>a</sup>
Planet mass	8.17 $M_{\oplus}$	Cloutier et al. (2021)
Planet intrinsic temperature	30 K <sup>c</sup>	Lopez & Fortney (2014)
Planet semimajor axis	0.01429 au <sup>b</sup>	Cloutier et al. (2021) <sup>a</sup>

#### Notes.

<sup>a</sup> We derive a new stellar radius for GJ 1214 by fitting the JWST MIRI LRS stellar spectrum with a PHOENIX model with the above stellar effective temperature,  $\log(g)$ , and  $[M/H]$ ; the same model was used in the data reduction of Kempton et al. (2023) and Kreidberg et al. (2014).

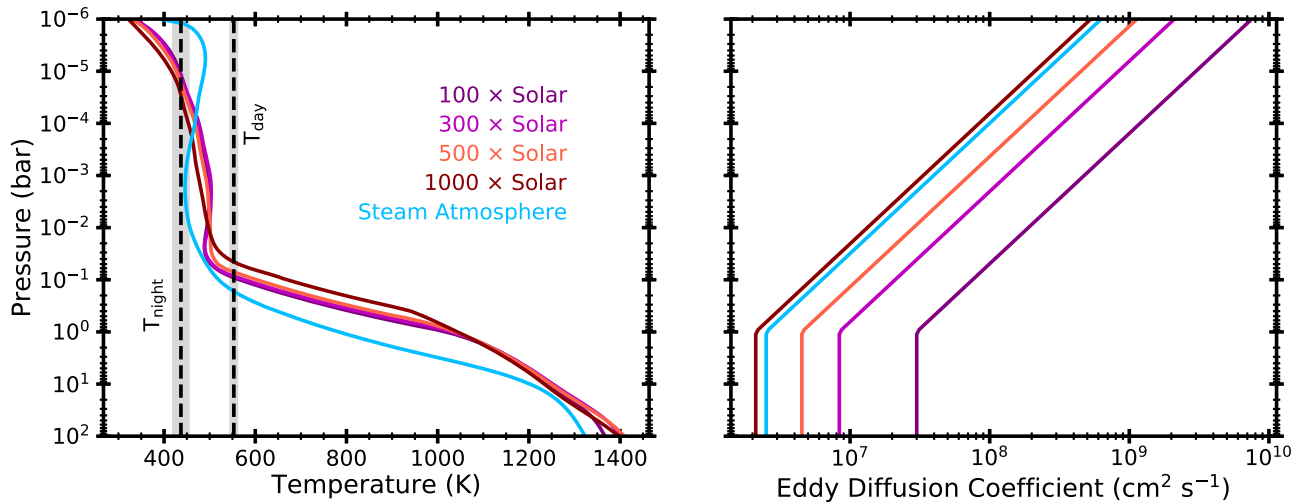
<sup>b</sup> Derived using the planet-to-star radius ratio and semimajor axis-to-stellar radius ratio from Cloutier et al. (2021) and the updated stellar radius above. We make the simplifying assumption that the planet-to-star radius ratio is the average of those measured in the 3.6 and 4.5  $\mu\text{m}$  Spitzer channels (see Table 4 of Cloutier et al. 2021).

<sup>c</sup> Estimated from Figure 5 of Lopez & Fortney (2014).

spectra. The planetary and stellar parameters we used in our modeling are given in Table 1.

### 2.2. Background Atmosphere

For the compositions of our background atmospheres, we consider  $N\times$  solar metallicities, with  $N = 100, 300, 500,$  and  $1000$ , in line with the findings of Kempton et al. (2023). We further examine a pure water vapor (steam) atmosphere motivated by the tentative detection of  $\text{H}_2\text{O}$  in the day and nightside emission spectra of GJ 1214 b (Kempton et al. 2023). The atmospheric thermal structure for all of the considered background atmospheric cases, as well as the chemical abundance profiles of the  $N\times$  solar metallicity cases are computed using the GENESIS and FASTCHEM 2 codes. GENESIS is a self-consistent 1D atmospheric model that calculates the equilibrium TP profile and thermal emission spectrum under the assumptions of radiative–convective, hydrostatic, and local thermodynamic equilibrium (Gandhi & Madhusudhan 2017; Piette & Madhusudhan 2020; Piette et al. 2020). FASTCHEM 2 is a semianalytical thermochemical equilibrium code (Stock et al. 2018; Stock et al. 2022). We couple GENESIS and FASTCHEM 2 in order to iteratively solve for the equilibrium TP profile and chemical abundance profiles in parallel. Besides the TP profile, the inputs to FASTCHEM 2 are the elemental abundances; we use the elemental abundances of Asplund et al. (2009) with all elements but H and He enhanced by a factor of  $N$  for each  $N\times$  solar metallicity case. FASTCHEM 2 considers almost 500 chemical species in the calculation of thermochemical equilibrium. In the calculation of radiative transfer, however, we include only the primary opacity sources for the compositions explored:  $\text{H}_2\text{O}$  (Rothman et al. 2010),  $\text{CH}_4$  (Yurchenko et al. 2013; Yurchenko & Tennyson 2014),  $\text{C}_2\text{H}_2$  (Rothman et al. 2013; Gordon et al. 2017),  $\text{CO}_2$  (Rothman et al. 2010),  $\text{CO}$  (Rothman et al. 2010),  $\text{HCN}$  (Harris et al. 2006),  $\text{NH}_3$  (Yurchenko et al. 2011),  $\text{N}_2$  (Barklem & Collet 2016; Western et al. 2018) and collision-induced absorption (CIA) due to  $\text{H}_2$ – $\text{H}_2$  and  $\text{H}_2$ –He (Richard et al. 2012). The cross sections for



**Figure 1.** Temperature–pressure (left) and eddy diffusion coefficient (right) profiles for the atmospheric compositions considered. The TP profiles were computed assuming radiative–convective equilibrium. The day and nightside temperatures of GJ 1214 b inferred by Kempton et al. (2023) from the observed phase curve and their uncertainties are given in the dashed vertical lines and gray regions, respectively.

these chemical species are calculated using the data cited above and the methods described in Gandhi & Madhusudhan (2017).

The energetic boundary conditions of the atmosphere are the incident stellar irradiation and the internal heat flux. For the stellar spectrum, we use a PHOENIX spectrum corresponding to  $T_{\text{eff}} = 3250$  K,  $\log(g) = 5.0$ , and  $[M/H] = +0.2$ , as used in Kreidberg et al. (2014) and Kempton et al. (2023). We use an internal heat flux equivalent to an internal temperature  $T_{\text{int}} = 30$  K, which is estimated from Figure 5 of Lopez & Fortney (2014) and is also representative of the values expected for GJ 1214 b for an age of 1–10 Gyr and a hydrogen-rich to water-rich atmosphere (Valencia et al. 2013). We note, however, that the choice of  $T_{\text{int}}$  does not impact the temperature structure in the pressure range probed by the observations ( $<10$  bars), as irradiation dominates over internal heat in this region.

We further assume efficient heat redistribution from the dayside to the nightside and a dayside Bond albedo of 0.6, similar to the albedo constraint of  $0.51 \pm 0.06$  from Kempton et al. (2023). As discussed in the Methods section of Kempton et al. (2023), the derived Bond albedo of GJ 1214 b can actually vary between 0.39 and 0.61 when taking into account the full range of data reductions, and in particular the uncertainties in their measured nightside flux. Our choice of a Bond albedo on the high side of that range thus allows for a more conservative modeling strategy: the resulting cooler atmosphere leads to smaller molecular feature amplitudes and flatter transmission spectra for a given atmospheric composition, allowing for a wider range of compositions (i.e., lower atmospheric molecular weights) to be acceptable by the data constraints. We discuss the impact of temperature variations on our results in Section 4.1.

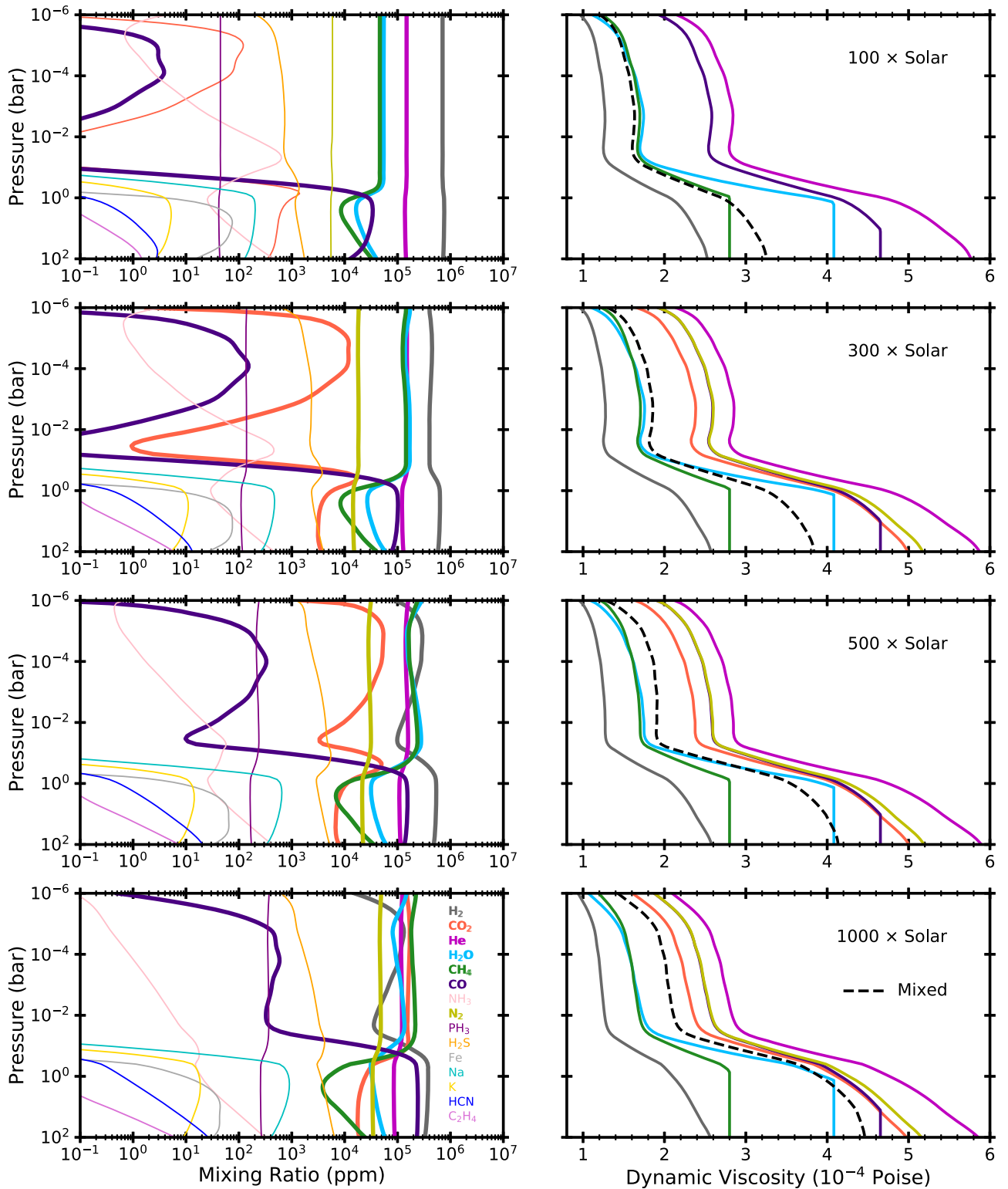
Figure 1 shows the computed TP profiles and Figure 2 shows the mixing ratio profiles of chemical species with mixing ratios of at least 1 ppm at some point in the atmosphere for the  $N \times$  solar cases. The temperatures near the photospheres of all cases lie between the inferred day and nightside temperatures of GJ 1214 b from Kempton et al. (2023), appropriate for our modeling of the transmission spectrum at the limb.  $\text{H}_2$ , He,  $\text{H}_2\text{O}$ ,  $\text{CH}_4$ , and  $\text{N}_2$  are consistently the most abundant species across all of these cases at pressures  $<1$  bar, with CO and  $\text{CO}_2$  becoming comparatively abundant at higher ( $\geq 500 \times$  solar)

metallicities, consistent with previous studies (Moses et al. 2013; Hu & Seager 2014; Morley et al. 2015; Kawashima & Ikoma 2019; Lavvas et al. 2019).

We use the eddy diffusion approximation to simulate the vertical mixing of haze particles. We consider the eddy diffusion coefficient ( $K_{zz}$ ) profiles derived by Charnay et al. (2015a) from GCM simulations with tracers:

$$K_{zz} = K_{zz0} P^{-0.4} \quad (1)$$

where  $P$  is the pressure in bars and  $K_{zz0}$  is a constant. We assume that the  $K_{zz}$  profile is constant at pressures  $>1$  bar with a value of  $K_{zz0}$  to avoid numerical issues; this does not impact our results since transmission spectroscopy probes much lower pressures, especially for hazy atmospheres (Fortney et al. 2003; Morley et al. 2015; Gao & Zhang 2020). Figure 1 shows the  $K_{zz}$  profiles we used for our different model atmospheres. Here we make the simplifying assumption that, for all of our models,  $K_{zz0} \propto H^2$ , with  $H$  being the pressure scale height, such that the eddy mixing timescale  $H^2/K_{zz0}$  is constant with changes in  $H$ , which is mostly due to variations in the atmospheric mean molecular weight for our different atmospheric composition cases (Table 2). We scale using  $H$  from the  $100 \times$  solar model at 1 bar, for which we set  $K_{zz0}$  to  $3 \times 10^7$  following Charnay et al. (2015a). Our scaling allows for similar magnitudes of mixing for different model atmospheres, such that we can ignore variations thereof as a contributing factor to differences in the haze distribution across our models. Interestingly, in Charnay et al. (2015a),  $K_{zz0}$  is  $3 \times 10^6 \text{ cm}^2 \text{ s}^{-1}$  for the pure steam atmosphere, which has a mean molecular weight  $\sim 3$  times that of the  $100 \times$  solar atmosphere, following our scaling closely. However, at lower metallicities the scaling breaks down, i.e.,  $K_{zz0} = 7 \times 10^6 \text{ cm}^2 \text{ s}^{-1}$  for the solar metallicity case of Charnay et al. (2015a). Indeed, the actual variation in atmospheric mixing with changing atmospheric composition is doubtlessly more complex (Kataria et al. 2014; Zhang & Showman 2017; Drummond et al. 2018), and future studies are needed to quantify these dependencies at very high metallicities.



**Figure 2.** Mixing ratio (left) and atmospheric dynamic viscosity (right) profiles for the  $N \times$  solar metallicity cases. The mixing ratio profiles of the species considered in the viscosity mixing calculation are shown as thicker curves and their labels are bolded. The mixed dynamic viscosity profiles are shown in the dashed curves. The constant-with-pressure viscosities for several species at higher pressures are due to the high temperature limits for the viscosity expressions of those species (Table 3).

Sedimentation of haze particles is a major control of the haze distribution, particularly at lower pressures (Parmentier et al. 2013; Steinrueck et al. 2021). The sedimentation velocity is dependent upon the atmospheric dynamic viscosity, which is a function of the atmospheric composition. As our model

atmospheres are dominated by multiple species, we must compute a “mixed” viscosity profile from those of the individual species. Here we use the method of Davidson (1993) that accounts for the efficiency of momentum transfer between gas molecules, where the mixed viscosity  $\eta_{\text{mix}}$  is given

**Table 2**  
Mean Molecular Weight (MMW) of Model Atmospheres at 1 bar

Model Atmosphere	MMW (g mol <sup>-1</sup> )
100 × solar	5.2
300 × solar	9.8
500 × solar	13.4
1000 × solar	19.5
Steam	18.0

by

$$\eta_{mix} = \left( \sum_{i,j} \frac{y_i y_j}{\sqrt{\eta_i \eta_j}} E_{i,j}^{3/8} \right)^{-1} \quad (2)$$

where  $\eta_i$  is the viscosity of gas  $i$ ,  $y_i$  is the momentum fraction of gas  $i$  defined by

$$y_i = \frac{x_i \sqrt{M_i}}{\sum_i x_i \sqrt{M_i}} \quad (3)$$

with  $x_i$  and  $M_i$  as the mixing ratio and molecular weight of gas  $i$ , respectively. Finally,  $E_{i,j}$  is the efficiency of momentum transfer between gases  $i$  and  $j$  given by

$$E_{i,j} = \frac{2\sqrt{M_i M_j}}{M_i + M_j} \quad (4)$$

The summation in Equation (2) is taken over each pair of gases in the atmosphere. For simplicity, we only consider gases with mixing ratios  $>1\%$  in our models for the viscosity mixing calculation, which includes H<sub>2</sub>, He, CO, H<sub>2</sub>O, and CH<sub>4</sub> for the 100 × solar case, and the addition of CO<sub>2</sub> and N<sub>2</sub> for the higher metallicity cases. The steam atmosphere case consists of just the H<sub>2</sub>O viscosity. The dynamic viscosity of each individual gas  $i$  is parameterized using

$$\eta_i = \frac{C_1 T^{C_2}}{1 + C_3/T + C_4/T^2} \quad (5)$$

where  $T$  is the temperature in kelvin and the constants  $C_1$ ,  $C_2$ ,  $C_3$ , and  $C_4$  are given in Table 3. Figure 2 shows the viscosity profiles of the individual gases considered and the mixed viscosity profile for the  $N \times$  solar cases, while Figure 3 shows the viscosity profile for the steam atmosphere. Note that several of the viscosity parameterizations possess maximum valid temperatures lower than the deep temperature of our atmospheric models; in such cases, we set the viscosity at higher temperatures to those at the maximum valid temperature. This assumption should not affect our results, as at such high pressures atmospheric mixing dominates over sedimentation in terms of particle transport processes.

### 2.3. Haze Microphysics

The Community Aerosol and Radiation Model for Atmospheres (CARMA) is an aerosol microphysics code that solves the aerosol continuity equation taking into account particle nucleation, condensation, evaporation, coagulation, sedimentation, diffusion, and advection (see Gao et al. 2018, for a complete description of the model). It relies on a bin scheme such that the particle size distribution is fully resolved instead

of assuming a functional form. For hazes, we only consider coagulation and transport, as the initial formation process of hazes through chemical reactions and, potentially, nucleation/condensation, is highly uncertain (Hörst et al. 2018; Gao et al. 2021).

For each model atmosphere, we simulate haze production as a downward flux of spherical particles from the top of the atmosphere at 1  $\mu$ bar. We consider column haze production rates of  $10^{-14}$ ,  $10^{-13}$ ,  $10^{-12}$ ,  $10^{-11}$ ,  $10^{-10}$ , and  $10^{-9}$  g cm<sup>-2</sup> s<sup>-1</sup>. The lower end of our range is motivated by the haze production rate at Titan (Checlair et al. 2016), while the higher end of the range stems from estimates from GJ 1214 b photochemical models (Kawashima & Ikoma 2019; Lavvas et al. 2019). We assume an initial particle size of 10 nm and a mass density of 1 g cm<sup>-3</sup>, similar to those in the upper atmosphere of Titan (Lavvas et al. 2010). The particles are allowed to coagulate with each other as they sediment and mix into the lower atmosphere, generating larger spherical particles with a sticking efficiency of 1. We do not simulate porous fractal aggregates in this work for simplicity, though we discuss the implications of such particles in Section 4.2. No destruction process is modeled in our work, as the thermal decomposition pressure/temperature of exoplanet hazes is uncertain (Lavvas & Koskinen 2017). This does not affect our results unless the hazes are destroyed at sufficiently low pressures/temperatures such that they are optically thin.

The single scattering albedo of the aerosols needed to reproduce the day and nightside emission spectrum of GJ 1214 b lies between  $\sim 1$ , i.e., purely scattering, and those of Titan tholins (Kempton et al. 2023). As such, we consider both compositions in this work as endmembers. The complex refractive indices for Titan tholins were sourced from Khare et al. (1984). For the purely scattering haze particles, we assume a simplified, wavelength-independent complex refractive index of  $m = 1.8 + 10^{-9}i$ , where 1.8 is the value of the real refractive index for soots at 1.4  $\mu$ m, motivated by the use of the soot real refractive indices for the purely scattering haze in the general circulation models of Kempton et al. (2023). The imaginary refractive index is chosen to be sufficiently low as to allow for maximum scattering without incurring numerical issues with the Mie calculations. A purely scattering haze would exhibit a Rayleigh scattering slope (i.e.,  $\lambda^{-4}$ ) at wavelengths much greater than the particle size, while a more absorptive haze would result in a shallower slope and more absorption at longer wavelengths. Therefore, a purely scattering haze would be the most difficult type of haze with which to generate a flat transmission spectrum out to mid-IR wavelengths. While recent laboratory experiments have generated haze refractive indices more appropriate to GJ 1214 b's atmospheric conditions (Corrales et al. 2023; He et al. 2023), we will restrict our study to the above two cases following Kempton et al. (2023), and look to future studies to evaluate the impact of the new refractive indices on GJ 1214 b model transmission spectra.

### 2.4. Transmission Spectra

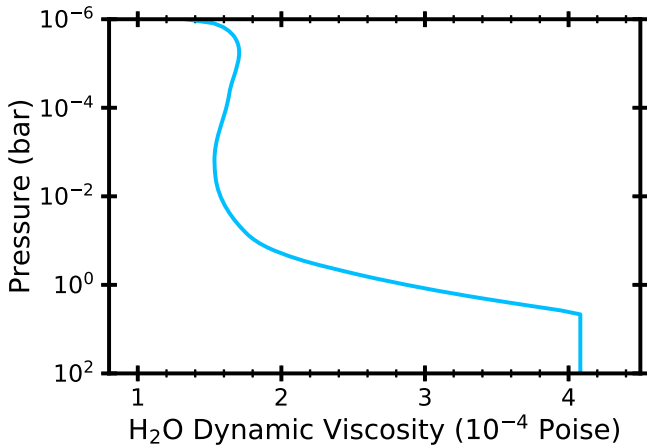
PICASO 3.0 is the newest version of the PICASO code (Batalha et al. 2017; Mukherjee et al. 2023) that now includes the capability of computing the planetary transmission spectrum. The methodology of the transit code relies on computing the slant optical depth and integrating the slant

**Table 3**  
Parameters<sup>a</sup> for Defining Atmospheric Dynamic Viscosity Using Equation (5)

Species	$C_1$ (Pa s)	$C_2$ (Pa s)	$C_3$ (Pa s)	$C_4$ (Pa s)	$T_{\min}$ (K)	$T_{\max}$ (K)
H <sub>2</sub>	$1.7970 \times 10^{-7}$	0.685	-0.59	140	13.95	3000
He	$3.2530 \times 10^{-7}$	0.7162	-9.6	107	20	2000
H <sub>2</sub> O	$1.7096 \times 10^{-8}$	1.1146	0	0	273.16	1073.15
CO	$1.1127 \times 10^{-6}$	0.5338	94.7	0	68.15	1250
CO <sub>2</sub>	$2.1480 \times 10^{-6}$	0.46	290	0	194.67	1500
CH <sub>4</sub>	$5.2546 \times 10^{-7}$	0.59006	105.67	0	90.69	1000
N <sub>2</sub>	$6.5592 \times 10^{-7}$	0.6081	54.714	0	63.15	1970

**Note.**

<sup>a</sup> All values from Table 2-138 of Southard & Green (2018).



**Figure 3.** Atmospheric dynamic viscosity for water vapor/the steam atmosphere case. The constant-with-pressure viscosity at pressures greater than a few bars is due to the high temperature limit for water vapor’s viscosity expression (Table 3).

transmittance following Equation (11) of Brown (2001).<sup>13</sup> The optical depths are computed from the cross section methodology outlined in Freedman et al. (2014) and Gharib-Nezhad et al. (2021). Specific to this analysis, we use the following line list databases in our cross section calculations: H<sub>2</sub>O (Polyansky et al. 2018), CO (Rothman et al. 2010; Li et al. 2015; Gordon et al. 2017), CO<sub>2</sub> (Huang et al. 2014), and CH<sub>4</sub> (Yurchenko et al. 2013; Yurchenko & Tennyson 2014). We include collision-induced absorption from H<sub>2</sub>-H<sub>2</sub>, H<sub>2</sub>-He, H<sub>2</sub>-CH<sub>4</sub>, and H<sub>2</sub>-N<sub>2</sub> from (Saumon et al. 2012). Lastly, PICASO self-consistently computes the Rayleigh cross section of each scattering species using the King correction factor and polarisability of each molecule<sup>14</sup>, following the methodology described in Section 3.2.2 of MacDonald & Lewis (2022). The transit functionality of PICASO was benchmarked with the comparisons to three independent codes (ATMOS, PHOENIX, and CHIMERA) in The JWST Transiting Exoplanet Community Early Release Science Team et al. (2023).

### 3. Results

#### 3.1. Haze Distributions and Optical Properties

The vertical and size distributions of haze particles vary substantially across the parameter space we explore here. These

variations are caused by the order of magnitude changes in the haze production rate, as shown in Figure 4 for the 1000× solar metallicity case. In general, the particle size distribution evolves from a “shoulder” of the 10 nm seed particles in the upper atmosphere to a larger “coagulation mode” at depth. Higher haze production rates generate higher number densities and larger particles (~0.1–1 μm in the upper atmosphere and at depth) due to rapid growth by coagulation, while lower haze production rates result in little growth beyond the 10 nm seeds. The results for the other background atmosphere cases are similar.

The peak of the haze size distribution at a given pressure level is set by where the coagulation timescale equals the vertical transport timescale, as represented by the green curve in Figure 4: when particles are small and numerous (i.e., when they are on the left side of the green curve), coagulation occurs fast enough to overwhelm any particle transport due to the coagulation rate being proportional to particle number density, leading to rapid localized particle growth; however, as coagulation is mass conserving, it causes the number density of particles to decrease while increasing the particle sizes, leading to a reduction in the coagulation rate until transport becomes dominant, removing the particles from the local gas parcel and quenching further growth. The primary mode of particle transport for nearly all particles is eddy mixing, as most of the size distributions lie to the left of the blue curve in Figure 4 where mixing dominates over sedimentation. At depth, coagulation slows due to the loss of small particles to coagulation, leading to the peak in the green curve at ~0.1–1 bar.

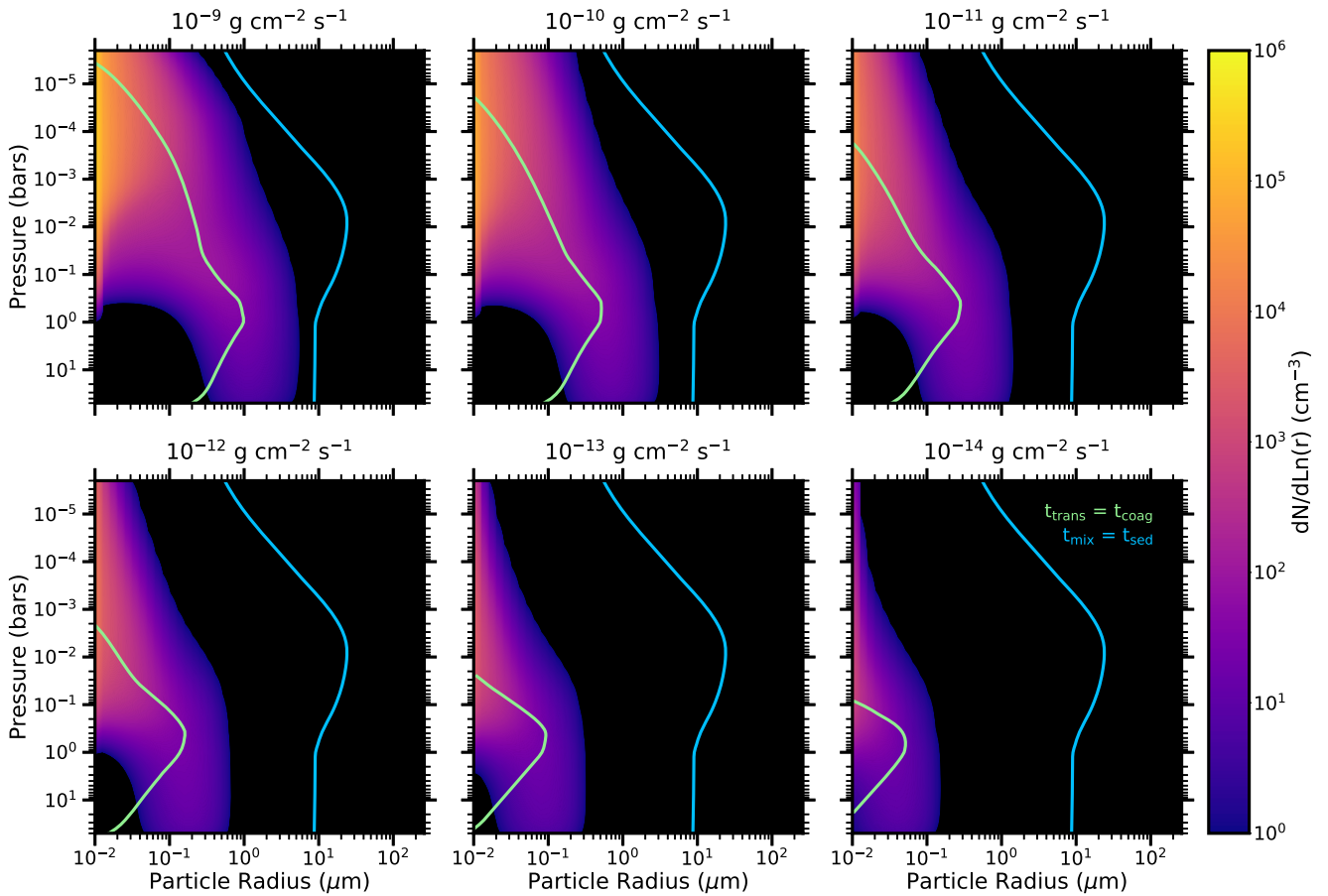
Higher haze production rates lead to larger haze optical depths due to the increased particle sizes and number densities (Figure 5). At the highest haze production rates, the haze becomes optically thick in the transit (slant) geometry at pressures as low as 10 μbar, for both purely scattering and Titan tholin hazes. In contrast, at low haze production rates (<10<sup>-12</sup> g cm<sup>-2</sup> s<sup>-1</sup>), the haze may not reach slant optical depth of 1 at all (at a wavelength of 5 μm). Here we define the ratio of slant to nadir optical depth  $\tau_s/\tau_n$  as (Fortney et al. 2005),

$$\frac{\tau_s}{\tau_n} = \sqrt{\frac{2\pi R_p}{H}} \quad (6)$$

where  $R_p$  is the planet radius, which we take to be the value in Table 1. Defining the scale height  $H$  using a temperature of 495 K (i.e., midway between the measured day and nightside temperatures; Kempton et al. 2023), gravity computed from the

<sup>13</sup> `</>picaso.fluxes.get_transit_ld()`

<sup>14</sup> `</>picaso.rayleigh.Rayleigh()`



**Figure 4.** Number density of haze particles as a function of particle radius and pressure level in the atmosphere for the  $1000\times$  solar metallicity case and various haze production rates. The blue and green curves indicate particle radii where the eddy mixing timescale is equal to the sedimentation timescale and where the transport timescale (set by the smaller of the eddy mixing and sedimentation timescales) equal the coagulation timescale, respectively. See Gao & Zhang (2020) for our definition of these timescales. Particles smaller than the green curve coagulate faster than can be transported, and vice versa. Particle transport is dominated by mixing for particles smaller than the blue curve, and sedimentation for particles that are larger.

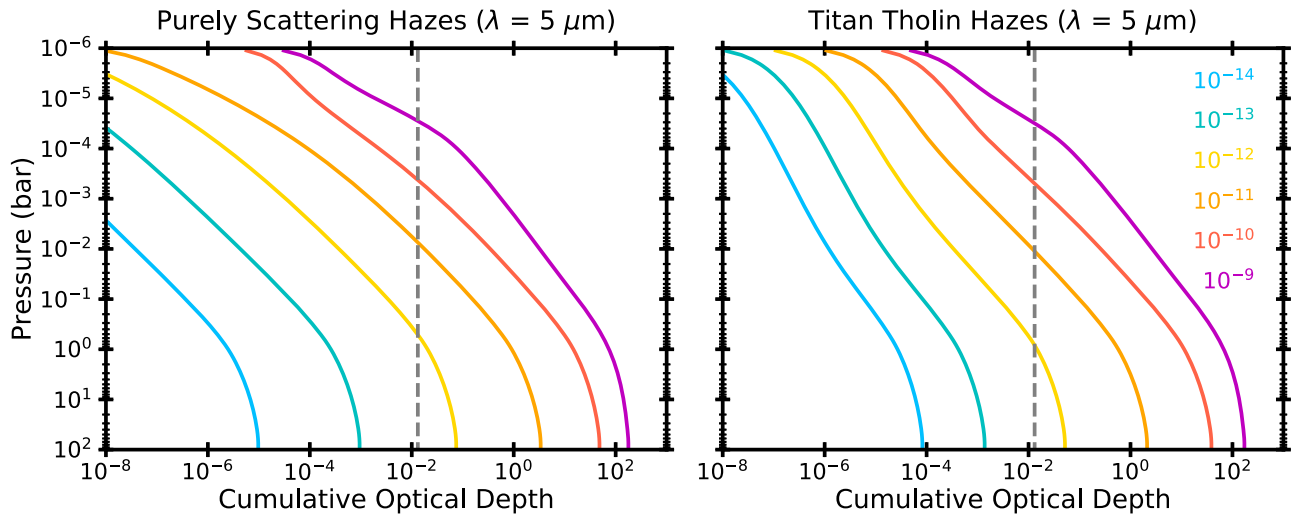
planetary parameters in Table 1, and an atmospheric mean molecular weight of  $19.5 \text{ g mol}^{-1}$  for the  $1000\times$  solar metallicity case (Table 2), we find  $H \sim 18 \text{ km}$  and  $\tau_s/\tau_n \sim 76$ . In other words, the slant optical depth reaches 1 when the nadir optical depth reaches  $1/76 \sim 0.013$ . In general, we see column optical depth decreasing faster with decreasing haze production rate for the purely scattering haze compared to the Titan tholin haze due to the increased absorption of the latter cases.

At the pressure levels where the haze becomes optically thick in the slant direction, we find varying behaviors in the haze optical properties as a function of haze production rate due to differences in the mean particle sizes and haze compositions (Figure 6). By design, the purely scattering hazes possess a single scattering albedo of nearly 1 with no spectral features at any wavelengths. However, the spectral slope and scattering properties can still be variable due to particle size differences. For example, the asymmetry parameter tends to stay fairly constant at shorter wavelengths but reduces to near zero at longer wavelengths once the ratio of particle size to wavelength is sufficiently small such that the particle becomes a Rayleigh scatterer. Meanwhile, Titan tholin hazes possess spectral absorption features at 3, 4.5, and  $6.5 \mu\text{m}$  owing to vibrational modes of organic bonds (Wakeford & Sing 2015), which are visible in the optical depth curves and show as low values in

the single scattering albedo. Minor wave-like features in the asymmetry parameter and optical depth curves are due to numerical errors in the Mie calculation.

### 3.2. Comparisons to Data

We compare our model transmission spectra to three data sets spanning the near- and mid-infrared: the HST WFC3 transmission spectrum from Kreidberg et al. (2014), the JWST MIRI LRS transmission spectrum from Kempton et al. (2023), and the Spitzer 3.6 and  $4.5 \mu\text{m}$  photometric points from Fraine et al. (2013). For the latter, we specifically compare to the transit depths derived using orbital parameters from Berta et al. (2012) in order to maximize consistency in orbital parameters between the three data sets. We fit the model spectra to the data using `scipy.optimize.minimize` to shift the models up and down until the reduced chi squared ( $\chi_r^2$ ) is minimized. As the radius of the planet is known, shifting the model transit depths implies changing the reference pressure of the planet’s radius. However, changing the reference pressure has subtle effects, such as on the profile of gravity in the atmosphere, that are not captured by simply shifting the model spectra up and down. As such, we pick the reference pressure for each spectrum such that the shifts are never more than 30 ppm in either direction, in keeping with the uncertainties of the most precise data points (i.e., the HST data from



**Figure 5.** Nadir column optical depth at a wavelength of  $5 \mu\text{m}$  for purely scattering (left) and Titan tholin (right) hazes for the  $1000\times$  solar metallicity case and various haze production rates. The vertical gray dashed line indicates the nadir column optical depth where the slant optical depth equals 1 for the geometry of GJ 1214 b’s atmosphere, given the updated planetary parameters (Table 1) and mean molecular weight of a  $1000\times$  solar metallicity atmosphere (Table 2).

Kreidberg et al. 2014) Here we consider four degrees of freedom for calculating  $\chi_r^2$ : the shifts, the atmospheric composition, the haze production rate, and the haze composition (purely scattering haze versus Titan tholin haze). We do not consider the MIRI LRS points  $>10 \mu\text{m}$  in the fitting due to uncertainties in the background subtraction at these wavelengths (see Kempton et al. 2023 for details).

The transmission spectrum from the near to the mid-IR is flat and featureless, and thus we are unable to constrain specific atmospheric compositions and detect specific molecular species. However, the flatness of the spectrum allows us to place limits on the atmospheric mean molecular weight and haze production rate by determining which models have sufficiently small spectral features. Our data model comparisons suggest atmospheric mean molecular weights  $\geq 15 \text{ g mol}^{-1}$  (i.e., the best-fit models are the  $1000\times$  solar metallicity and steam atmosphere cases) and haze production rates  $\geq 10^{-10} \text{ g cm}^{-2} \text{ s}^{-1}$  (Figures 7–9). The extension of the flat transmission spectrum into the mid-infrared disfavors lower mean molecular weights (e.g., lower metallicities), which were allowed by previous observations in the NIR for comparatively high haze production rates (Table 4). The high metallicities inferred here are consistent with core accretion population synthesis models that take into account envelope pollution by accreted planetesimals (Fortney et al. 2013). We do not rule out nonsolar ratio atmospheric compositions like the steam atmosphere scenario. While a flat line transmission spectrum results in a low  $\chi_r^2$  of 1.4 (with only 1 degree of freedom), some of our models possess just as low values, if not lower (Table 4), though the differences in  $\chi_r^2$  between these models are small.

Some of the differences in the goodness of fit between the best-fit models may be due to an unknown offset between the MIRI and the other data sets arising from differences in orbital and stellar parameters, limb-darkening coefficients, and stellar variability. As the slope of the spectrum from the NIR to the MIR is crucial in constraining our models, we tested for the effect of an offset by adding a free parameter that shifts the MIRI transit depths up and down. While the best-fit cases had positive offsets of 50–100 ppm (i.e., increasing the transit depths at the MIRI wavelengths), the resulting  $\chi_r^2$  and trend

thereof with atmospheric composition and haze production rate were not qualitatively different from our nominal results.

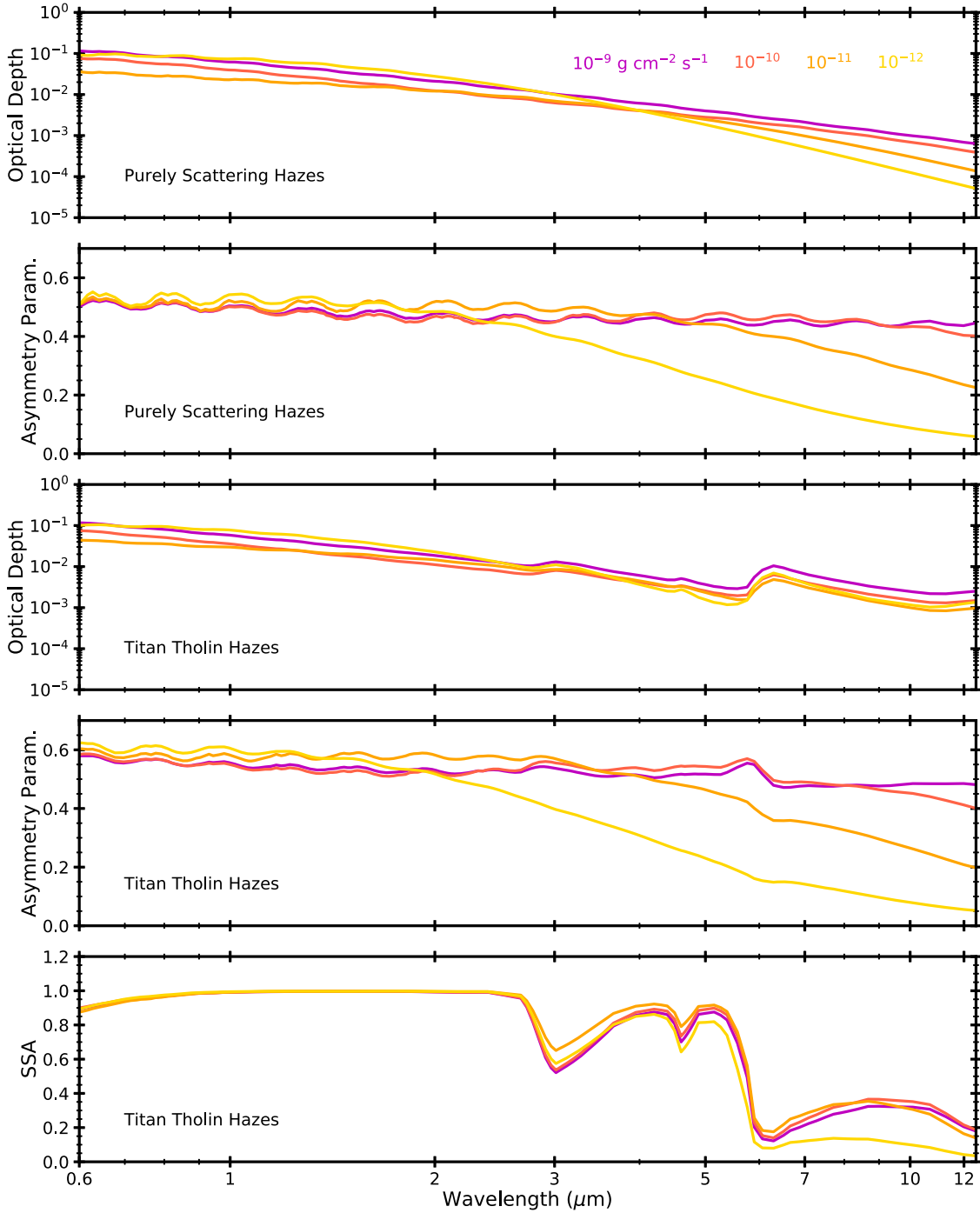
We do not find any significant differences between the  $\chi_r^2$ ’s of the purely scattering and Titan tholin hazes (Figure 9). While the latter possess spectral features (Figures 6 and 8), these features are fairly broad and low amplitude, particularly in the high mean molecular weight and high haze production rate cases, and thus do not impact the fits significantly. As the single scattering albedo of the haze inferred from the GJ 1214 b phase curve lies between those of a purely scattering haze and the Titan tholin haze (Kempton et al. 2023), our results suggest that uncertainties regarding the actual optical properties of GJ 1214 b’s hazes do not impact our inferences of the atmospheric composition and haze production rate from the transmission spectrum.

#### 4. Discussion

Our results reinforce the picture that GJ 1214 b possesses a hazy atmosphere that is highly enriched in elements heavier than hydrogen and helium. In particular, the flatness of the transmission spectrum from the NIR to the MIR suggests an atmospheric mean molecular weight  $\geq 15 \text{ g mol}^{-1}$ , indicating metallicities  $\geq 1000\times$  solar or the existence of a secondary atmosphere composed primarily of gases at least as heavy as water vapor. Simultaneously, the column haze production rate needs to be near the upper end of those estimated from photochemical models (Kawashima & Ikoma 2019; Lavvas et al. 2019), implying high haze formation efficiencies and/or the inclusion of a wide range of trace gases as haze precursors such as CO, CO<sub>2</sub>, and sulfur species in addition to hydrocarbons and nitriles (He et al. 2020; Hörst et al. 2018). Our results, however, depend on several model assumptions regarding atmospheric composition and aerosol microphysics, which we discuss below.

##### 4.1. Sensitivity of Results to Background Atmosphere

We do not include haze feedback on the atmospheric thermal structure and composition. As such, we cannot confirm whether our best-fitting haze models produce a Bond albedo of 0.6 that is consistent with our initial assumptions and observations, nor can we ascertain whether our haze models can reproduce the



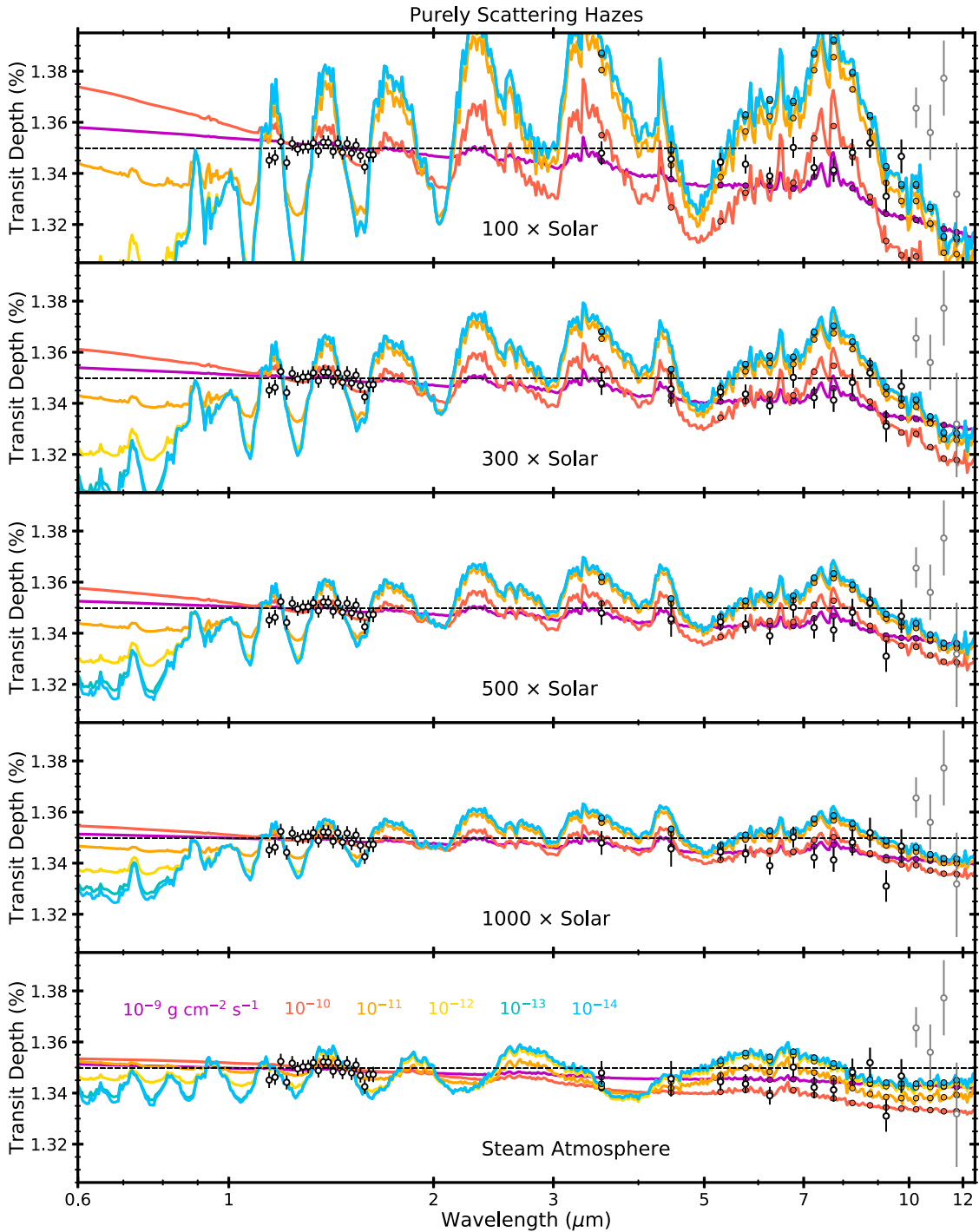
**Figure 6.** The optical properties of the haze models shown in Figure 5 at a slant optical depth at  $5 \mu\text{m}$  of 1 (i.e., where the colored curves intersect the gray dashed line), as a function of wavelength. Models with haze production rates  $< 10^{-12} \text{ g cm}^{-2} \text{ s}^{-1}$  are not shown as they never achieve a slant optical depth at  $5 \mu\text{m}$  of 1 in the atmosphere. The top two plots show the optical depth and asymmetry parameter (“Asymmetry Param.”) of the purely scattering hazes while the bottom three plots show the optical depth, asymmetry parameter, and single scattering albedo (SSA) of the Titan tholin hazes. We do not show the single scattering albedo of the purely scattering hazes because it is essentially 1 for the wavelength range of interest. Minor wave-like features in the asymmetry parameter and optical depth curves are due to numerical errors in the Mie calculation.

thermal emission data from Kempton et al. (2023). A self-consistent treatment of haze feedback is needed, which we will defer to a future study. Instead, here we will evaluate how temperature errors associated with our lack of haze feedback contribute to errors in our model transmission spectra. Since spectral features in transmission are most sensitive to the scale height, which scales only linearly with temperature (versus the fourth power for emission), we expect temperature errors to impact transmission spectroscopy minimally. We can estimate

the effect of temperature errors on our results by considering that the transit depth difference  $\Delta D$  associated with a single scale height is (Stevenson 2016),

$$\Delta D = \frac{2HR_p}{R_s^2} \quad (7)$$

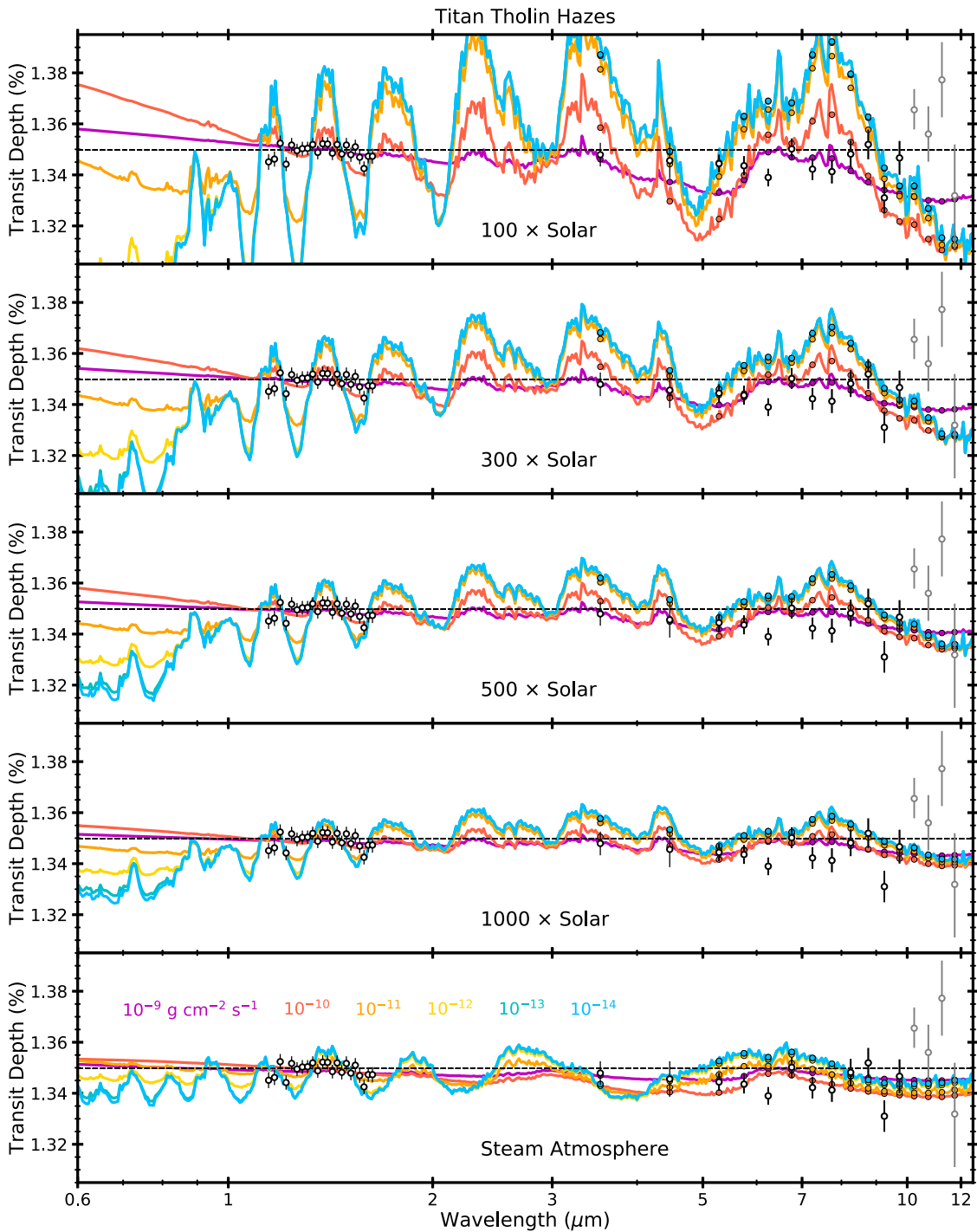
where  $R_s$  is the stellar radius. Given the appropriate values in Table 1 and  $H \sim 18 \text{ km}$  from Section 3.1 for the  $1000\times$  solar



**Figure 7.** Comparison of model transmission spectra for the purely scattering haze cases and various atmospheric compositions and haze production rates with the HST WFC3 (Kreidberg et al. 2014), Spitzer (Fraine et al. 2013), and JWST MIRI LRS (Kempton et al. 2023) observations (white points with black edges and error bars; those with gray edges and error bars were not considered in the fitting; see text). The band-integrated model transmission spectrum for the corresponding data points is shown in the colored points. The best-fit flat line is shown in the black dashed line.

metallicity case, we get  $\Delta D \sim 30$  ppm for one scale height, similar to the uncertainties on the HST WFC3 data (Kreidberg et al. 2014). To evaluate the impact of our haze models having lower Bond albedo than the assumed value of 0.6, we note that the zero Bond albedo temperature of the planet  $\sim 600$  K (Cloutier et al. 2021), 100 K higher than the photospheres of our model atmospheres (Figure 1); this leads to an associated transit depth error of only  $\sim (600-500)/$

$500 \times 30$  ppm = 6 ppm, which would not be detectable given current data quality. In other words, our conclusions here should not be affected if our haze models possessed a lower Bond albedo than the assumed value of 0.6. While a thermal inversion of  $>100$  K due to haze absorption in the upper atmosphere is certainly possible, the temperature increase would have to be several hundred kelvin to be detectable in transmission, which may not be physical. Conversely, if our

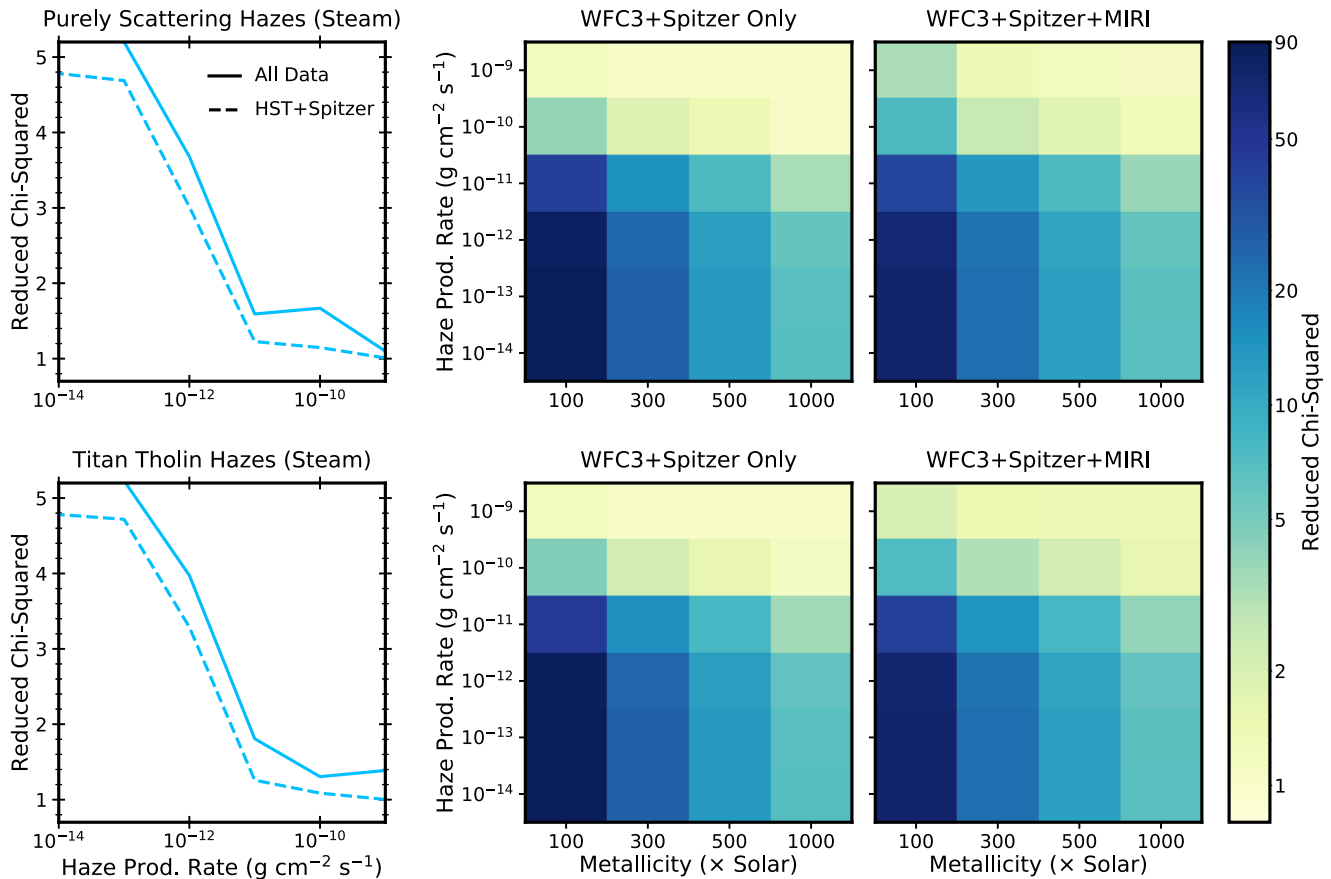


**Figure 8.** Same as Figure 7, but for the Titan tholin haze cases.

haze models possessed Bond albedo  $>0.6$ , then we would be overestimating their atmospheric temperature and therefore their scale height, and lower atmospheric mean molecular weight atmospheres would be allowed by the data once haze feedback is taken into account. However, such high albedo models would not be permitted by the thermal emission observations (Kempton et al. 2023), and as such they are not particularly relevant. Regardless of these potential temperature errors, the composition of the atmosphere is likely to be insensitive to haze feedback, as the temperature in the observable part of the atmosphere is solidly on the  $\text{CH}_4$  side

of the  $\text{CH}_4/\text{CO}$  transition (Figure 2), such that changing the local temperature by  $\sim 100$  K should not significantly alter the abundances of the main trace gases. In summary, even though haze feedback is likely vital for controlling the Bond albedo and thermal emission of GJ 1214 b, its transmission spectrum should not be strongly affected.

While our work focused on photochemical hazes, which are the result of disequilibrium chemical processes, the background gas composition of our model atmospheres—and thus the primary spectral features in transmission—were computed assuming thermochemical equilibrium.



**Figure 9.** Reduced chi-squared ( $\chi_r^2$ ) values for the data model comparisons for the steam atmosphere cases with (solid) and without (dashed) JWST MIRI LRS data (left) and the  $N\times$  solar cases without (middle) and with (right) JWST MIRI LRS data. The top row shows results for the purely scattering haze cases, while the bottom row shows the same for the Titan tholin haze cases.

Disequilibrium chemical processes such as photochemistry and gas transport by mixing and advection are likely active on GJ 1214 b, as has been predicted by previous modeling works (Miller-Ricci Kempton et al. 2012; Morley et al. 2013; Hu & Seager 2014; Morley et al. 2015; Kawashima & Ikoma 2018, 2019; Lavvas et al. 2019). These studies focused on hydrocarbon, oxygen, and nitrogen chemistry for various atmospheric metallicities and found significant production of higher order hydrocarbons and nitriles, though at very high metallicities ( $\sim 1000\times$  solar) the high O/H ratio leads to a decrease in reducing species. Future modeling studies that include sulfur photochemistry (Tsai et al. 2023) that could enhance haze production (He et al. 2020) should prove informative. However, it may be difficult to detect disequilibrium chemical species through transmission spectroscopy alone due to the small atmospheric scale height and large haze opacity of GJ 1214 b suggested by our study.

We examined a steam atmosphere scenario to evaluate the impact of nonsolar ratio atmospheric compositions on the transmission spectrum. However, such an atmosphere is unlikely to reflect the actual atmospheric state of GJ 1214 b. For example, it would be difficult for a pure steam atmosphere to host hazes, unless contaminants like carbon, nitrogen, and sulfur were also present to form hydrocarbon, nitrile, and/or sulfur/sulfuric acid aerosols. The recent detection of He escape from GJ 1214 b (Orell-Miquel et al. 2022) would also rule out a “secondary” atmospheric composition, but the detection is controversial (Kasper et al. 2020; Spake et al. 2022).

#### 4.2. Sensitivity of Results to Haze Microphysics

In our study we considered spherical haze particles, but porous fractal aggregates are another form that haze particles can take (West & Smith 1991). Such “fluffy” particles can possess larger cross sections with which to block and scatter light, while staying aloft at lower pressures due to their lower densities compared to solid spherical particles. As a result, they can lead to flatter transmission spectra for a given haze production rate and background atmosphere (Adams et al. 2019). However, the degree of porosity or aggregate fractal dimension is important in determining the particle extinction cross section and how it varies with wavelength—at fractal dimensions  $\sim 2$ , similar to those in Titan’s atmosphere, the wavelength dependence of aggregates is determined by the (much smaller) monomer size rather than the total aggregate size, and thus a spectral slope is introduced (Lavvas et al. 2019; Ohno et al. 2020). There is thus a trade-off between higher porosity and increased wavelength dependence and it is therefore not obvious how introducing porous particles to our models would affect our constraints on GJ 1214 b’s atmosphere. Future work is needed to determine whether including porous particles could reduce the haze production rate needed to explain GJ 1214 b’s full transmission spectrum.

Another assumption we made is that haze particle coagulation proceeds with perfect efficiency (i.e., a sticking efficiency of 1). A reduced sticking efficiency is possible if the haze particles are charged due to interactions with ions in the atmosphere; like-charged haze particles would repel each

**Table 4**  
 $\chi_r^2$  Values for Our Data Model Comparisons<sup>a</sup>

Atmos. Composition	Haze Prod.	Pure Scattering	Pure Scattering	Titan Tholin	Titan Tholin
	Rate (g cm <sup>-2</sup> s <sup>-1</sup> )	$\chi_r^2$ (No MIRI)	$\chi_r^2$ (All Data)	$\chi_r^2$ (No MIRI)	$\chi_r^2$ (All Data)
100 × Solar	10 <sup>-9</sup>	1.22	3.31	1.2	2.03
	10 <sup>-10</sup>	3.96	7.55	4.66	7.31
	10 <sup>-11</sup>	42.49	38.01	46.35	41.82
	10 <sup>-12</sup>	81.62	68.62	83.18	69.9
	10 <sup>-13</sup>	87.83	73.31	87.89	73.36
	10 <sup>-14</sup>	88.01	73.44	88.01	73.44
300 × Solar	10 <sup>-9</sup>	1.03	1.35	1.03	1.4
	10 <sup>-10</sup>	1.84	2.53	2.2	3.1
	10 <sup>-11</sup>	14.59	13.49	15.56	14.46
	10 <sup>-12</sup>	24.64	21.39	25.02	21.7
	10 <sup>-13</sup>	26.34	22.68	26.37	22.7
	10 <sup>-14</sup>	26.41	22.73	26.41	22.73
500 × Solar	10 <sup>-9</sup>	1.01	1.16	1.02	1.34
	10 <sup>-10</sup>	1.37	1.74	1.57	2.21
	10 <sup>-11</sup>	7.59	7.48	7.99	7.91
	10 <sup>-12</sup>	12.13	11.12	12.32	11.28
	10 <sup>-13</sup>	13.05	11.83	13.07	11.84
	10 <sup>-14</sup>	13.1	11.86	13.1	11.86
1000 × Solar	10 <sup>-9</sup>	1.02	<b>1.14</b>	1.03	1.35
	10 <sup>-10</sup>	1.07	1.3	1.12	1.58
	10 <sup>-11</sup>	3.33	3.78	3.52	4.02
	10 <sup>-12</sup>	5.97	6.02	6.11	6.14
	10 <sup>-13</sup>	6.77	6.65	6.79	6.67
	10 <sup>-14</sup>	6.83	6.69	6.83	6.69
Steam atmosphere	10 <sup>-9</sup>	1.01	<b>1.1</b>	1.0	1.39
	10 <sup>-10</sup>	1.15	1.67	1.09	1.3
	10 <sup>-11</sup>	1.23	1.59	1.26	1.81
	10 <sup>-12</sup>	3.01	3.68	3.29	3.97
	10 <sup>-13</sup>	4.69	5.2	4.72	5.23
	10 <sup>-14</sup>	4.78	5.28	4.78	5.28
Flat line	...	0.95	1.40	...	...

**Note.**

<sup>a</sup> Bolded values represent the pure scattering haze models with the lowest  $\chi_r^2$ , which are plotted in Figure 10.

other, resulting in less efficient coagulation (Lavvas et al. 2010). The impact of such processes on our results would be a decrease in the mean particle size and an increase in haze number density, effectively increasing haze opacity overall but introducing more of a spectral slope due to the decrease in the ratio of particle radius to wavelength. Consequently, we would see reduced molecular feature strengths, as the haze becomes optically thick at lower pressures, while the spectral slope may become steeper; the former would increase the goodness of fit of the model to data while the latter would decrease the goodness of fit, and as such the net impact on  $\chi_r^2$  is uncertain and would likely depend on the exact sticking efficiency.

#### 4.3. The Role of Clouds

We chose to focus on hazes in this work, but condensate clouds have also been invoked to explain the flat transmission

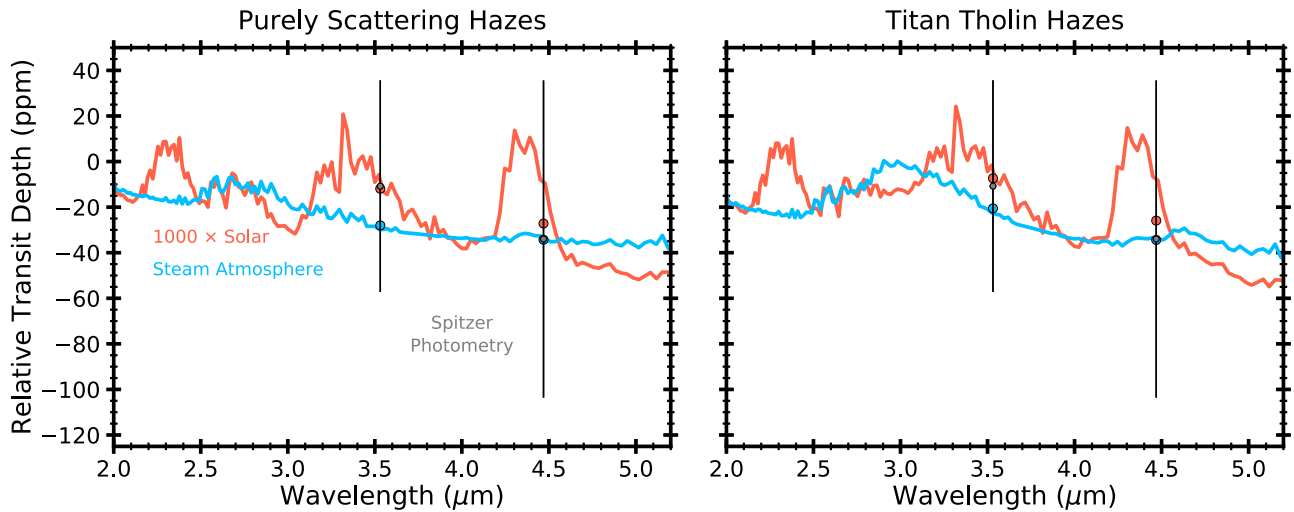
spectra (Morley et al. 2013; Charnay et al. 2015b; Morley et al. 2015; Gao & Benneke 2018; Ohno & Okuzumi 2018; Ohno et al. 2020; Christie et al. 2022). However, as clouds form through the upwelling of condensate vapor from depth, as opposed to hazes that form naturally at low pressures near the UV photosphere, a greater amount of vertical transport is needed to bring the cloud particles up to the altitudes required. For example, Gao & Benneke (2018) needed a  $K_{zz}$  of  $10^{10}$  cm<sup>2</sup> s<sup>-1</sup> and high atmospheric metallicity (1000× solar) to match the NIR data with a microphysical model of KCl clouds, even though GCMs predict much lower  $K_{zz}$  values (Charnay et al. 2015a). Ohno & Okuzumi (2018) considered the GCM-derived  $K_{zz}$  in their microphysical model of KCl clouds and found that they could not reproduce the NIR data even with a high mean molecular weight steam atmosphere. The inclusion of porous aggregate cloud particles in their follow-up work (Ohno et al. 2020) allowed their models to match the NIR data with an atmospheric metallicity of 1000× solar, but it is unknown whether their data model agreement extends to MIRI wavelengths.

Modeling efforts that used the *eddysed* framework (Ackerman & Marley 2001; Rooney et al. 2022) and GCM-derived  $K_{zz}$  needed very low (0.1–0.01) values for the sedimentation efficiency parameter,  $f_{sed}$ , to produce the cloud vertical extents required by the data (Morley et al. 2015; Christie et al. 2022). Charnay et al. (2015b) included KCl and ZnS clouds in their GCM study and were able to match the NIR data with an atmospheric metallicity of 100 × solar, but their model spectra possessed large spectral variations in the mid-infrared that would be rejected by the MIRI data. In all, matching the NIR and MIR data with clouds alone would likely be much more difficult than doing so with hazes under reasonable model assumptions.

An interesting scenario that could be explored in future studies is the interaction of clouds and hazes. Organic hazes are common cloud condensation nuclei on Earth (Sun & Ariya 2006) and water cloud formation typically removes these haze particles from our atmosphere (e.g., Oduber et al. 2021). Yu et al. (2021) studied the surface energies of different laboratory exoplanet haze analogs and found that hazes formed at high atmospheric metallicity and at the temperature of GJ 1214 b may be especially difficult for KCl to nucleate on due to their low surface energies, suggesting minimal haze removal by KCl cloud formation. However, if the surface energy of the actual hazes in the atmosphere of GJ 1214 b were higher, and sedimentation were the primary cloud transport process instead of mixing, then haze removal via KCl cloud formation may be efficient, reducing the haze opacity such that increases in the haze production rate and/or atmospheric mean molecular weight would be needed to match the flat transmission spectrum.

#### 4.4. Implications for Internal Structure

The constraint on the atmospheric mean molecular weight resulting from our study may have consequences for inferences of the bulk composition and internal structure of GJ 1214 b. As an example, here we assess whether a water world composition, as would be implied by a steam atmosphere, is realistic. To do this, we use the internal structure model described in Nixon & Madhusudhan (2021), which has previously been applied to a number of sub-Neptunes (Luque et al. 2021, 2022), to estimate the bulk mass fraction of H<sub>2</sub>O that would be required to explain the observed mass and radius of the planet. In this case, the model consists of a water envelope above an Earthlike core



**Figure 10.** Model transmission spectra for the two lowest  $\chi_r^2$  models with purely scattering hazes (see Table 4; left) and corresponding Titan tholin hazes (right) compared to Spitzer photometry (Fraine et al. 2013). The 3 to 5  $\mu\text{m}$  region will be observed using JWST NIRSpec G395H under JWST Cycle 1 GTO Program 1185 (Greene et al. 2017).

consisting of one-third Fe and two-thirds  $\text{MgSiO}_3$  by mass. The temperature profile in the interior is computed by extending the TP profile of the steam atmosphere model (Figure 1) into the interior, assuming an adiabatic temperature profile for pressures  $>100$  bar. We found that, assuming a nominal photospheric pressure of 10 mbar, a water mass fraction of 73.7% is needed to reproduce the planetary radius of  $2.628 R_\oplus$  (Table 1). The mass and radius of the planet can therefore be explained without invoking a H/He-dominated atmosphere, albeit at a somewhat higher mass fraction of water than has been suggested for other water worlds ( $\sim 50\%$ ; Luque & Pallé 2022). Future work will examine the full range of compositions that are possible for this planet in light of the new insights into its atmosphere provided in Kempton et al. (2023) and the present study.

#### 4.5. Outlook for Future Observations

Additional transmission spectra of GJ 1214 b will soon be obtained between 3 and 5  $\mu\text{m}$  using JWST NIRSpec G395H through GTO program 1185 (Greene et al. 2017).<sup>15</sup> Based on our best-fitting models, we predict feature amplitudes of a few tens of parts per million within this wavelength range, with about the same magnitude of difference between the models (Figure 10). While tens of parts per million is likely above the noise floor of NIRSpec (Rustamkulov et al. 2022), the dimness of the host star GJ 1214 ( $J = 9.75$ ) may require multiple transits and/or significant spectral binning to recover the molecular features. Some differences also exist between the purely scattering haze and Titan tholin haze cases due to the latter exhibiting broad haze spectral features at 3 and 4.5  $\mu\text{m}$ , but these differences are on the order of  $\sim 10$  ppm.

The inferred high albedo of GJ 1214 b suggests that reflected light observations may be a potential alternative avenue for atmospheric characterization. The planet–star contrast near secondary eclipse (planetary phase angle  $= 0^\circ$ ),  $C_0$ , can be

estimated using (Cahoy et al. 2010)

$$C_0 = \frac{2}{3} A_g(\lambda) \left( \frac{R_p}{a} \right)^2 \quad (8)$$

where  $A_g(\lambda)$  is the wavelength-dependent geometric albedo and  $a$  is the planet’s semimajor axis. Equation (8) assumes that the planet reflects light isotropically. Using the values from Table 1, we find  $C_0 \sim (41 \text{ ppm}) \times A_g(\lambda)$  for GJ 1214 b. For reference,  $A_g(\lambda) = 2/3$  for a perfectly reflecting Lambert sphere,  $3/4$  for a purely Rayleigh scattering atmosphere, and could reach  $>1$  for anisotropically scattering atmospheres, though that would invalidate the assumption inherent in Equation (8) (Cahoy et al. 2010). While the precision of a few tens of parts per million appears to be above the noise floor of JWST’s near-IR instruments (Rustamkulov et al. 2022; Coulombe et al. 2023; Ahrer et al. 2023; Schlawin et al. 2023), multiple transits and spectral binning are likely needed to reach the necessary signal-to-noise ratio for detecting reflected light. However, without a self-consistent computation of the thermal emission of the planet (Section 4.1), the wavelengths at which reflected light dominates over thermal emission are uncertain. As such, we leave a more detailed, self-consistent calculation of the reflected light and thermal emission spectra of our haze models, as well as the resultant Bond albedo to a future study.

As a complementary technique, ground-based high-resolution transmission spectroscopy may be able to see the cores of molecular spectral lines that stick up above the haze layer of GJ 1214 b, allowing for the characterization of its atmospheric composition (Gandhi et al. 2020; Hood et al. 2020; Lafarga et al. 2023). In particular, Hood et al. (2020) considered a  $50 \times$  solar metallicity background atmosphere for GJ 1214 b and a haze that became opaque at 10  $\mu\text{bar}$ , similar to our highest haze production rate cases. They also found that their modeled observations are most sensitive to the atmosphere at 1  $\mu\text{bar}$ , where hazes are optically thin in our models. However, the much lower metallicity of their models means that the scale height of our model atmospheres is only  $\sim 1/5$  of theirs. As such, even though they found that ground-based observations on both current and future facilities should be able to detect

<sup>15</sup> This was updated from the original observing plan, which featured observations of GJ 1214 b using the F322W2 and F444W filters on JWST NIRCcam.

certain molecules in GJ 1214 b's atmosphere on reasonable timescales, the impact of the decreased scale heights we have obtained requires further evaluation.

## 5. Conclusions






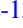



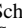
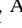




Even though the transmission spectrum of GJ 1214 b remains flat and featureless, the addition of mid-infrared data has allowed us to reject all but the highest metallicity/atmospheric mean molecular weight ( $\geq 15 \text{ g mol}^{-1}$ ) and haze production rate ( $\geq 10^{-10} \text{ g cm}^{-2} \text{ s}^{-1}$ ) models, pointing to an atmosphere dominated by species heavier than hydrogen and helium and efficient high altitude aerosol formation. Further characterization of GJ 1214 b's atmosphere through transmission spectroscopy will likely require JWST observations of multiple transits, while the same will be true of secondary eclipses to extract information from dayside emission spectra (Kempton et al. 2023). Alternatively, reflected light from GJ 1214 b may be detectable due to the presence of its high albedo aerosol layer, while ground-based high-resolution transmission spectroscopy could serve as a complementary technique to characterize GJ 1214 b's atmospheric composition. Future self-consistent modeling that includes haze radiative feedback on the atmospheric thermal structure will be needed to assess the viability of observational strategies beyond transmission spectroscopy. Taken together, the JWST MIRI LRS observations of GJ 1214 b demonstrate the importance of aerosols and high metallicities for interpreting future JWST observations of warm sub-Neptune exoplanets, necessitating careful observational planning in our quest to understand the most abundant type of planet in the Galaxy.

## Acknowledgments

We thank H. Zhang, W. Z. Gao, and S. Z. Gao for their loving support during the writing of this paper. This work is based on observations made with the NASA/ESA/CSA JWST. The data were obtained from the Mikulski Archive for Space Telescopes at the Space Telescope Science Institute, which is operated by the Association of Universities for Research in Astronomy, Inc., under NASA contract NAS 5-03127 for JWST. These observations are associated with program #1803. Support for this program was provided by NASA through a grant from the Space Telescope Science Institute.

*Facilities:* JWST(MIRI), HST(WFC3), Spitzer.

## ORCID iDs

Peter Gao  <https://orcid.org/0000-0002-8518-9601>  
 Anjali A. A. Piette  <https://orcid.org/0000-0002-4487-5533>  
 Maria E. Steinrueck  <https://orcid.org/0000-0001-8342-1895>  
 Matthew C. Nixon  <https://orcid.org/0000-0001-8236-5553>  
 Michael Zhang  <https://orcid.org/0000-0002-0659-1783>  
 Eliza M.-R. Kempton  <https://orcid.org/0000-0002-1337-9051>  
 Jacob L. Bean  <https://orcid.org/0000-0003-4733-6532>  
 Emily Rauscher  <https://orcid.org/0000-0003-3963-9672>  
 Vivien Parmentier  <https://orcid.org/0000-0001-9521-6258>  
 Natasha E. Batalha  <https://orcid.org/0000-0003-1240-6844>  
 Arjun B. Savel  <https://orcid.org/0000-0002-2454-768X>  
 Anastasia Triantafyllides  <https://orcid.org/0000-0002-3034-8505>  
 Michael T. Roman  <https://orcid.org/0000-0001-8206-2165>  
 Isaac Malsky  <https://orcid.org/0000-0003-0217-3880>  
 Jake Taylor  <https://orcid.org/0000-0003-4844-9838>

## References

- Ackerman, A. S., & Marley, M. S. 2001, *ApJ*, 556, 872  
 Ackerman, A. S., Toon, O. B., & Hobbs, P. V. 1995, *JGR*, 100, 7121  
 Adams, D., Gao, P., de Pater, I., & Morley, C. V. 2019, *ApJ*, 874, 61  
 Ahrer, E.-M., Stevenson, K. B., Mansfield, M., et al. 2023, *Natur*, 614, 653  
 Asplund, M., Grevesse, N., Sauval, A. J., & Scott, P. 2009, *ARA&A*, 47, 481  
 Barklem, P. S., & Collet, R. 2016, *A&A*, 588, A96  
 Batalha, N. E., Mandell, A., Pontoppidan, K., et al. 2017, *PASP*, 129, 064501  
 Bean, J. L., Désert, J.-M., Kabath, P., et al. 2011, *ApJ*, 743, 92  
 Bean, J. L., Miller-Ricci Kempton, E., & Homeier, D. 2010, *Natur*, 468, 669  
 Berta, Z. K., Charbonneau, D., Désert, J.-M., et al. 2012, *ApJ*, 747, 35  
 Bohren, C. F., & Huffman, D. R. 2008, *Absorption and Scattering of Light by Small Particles* (Hoboken, NJ: Wiley)  
 Brown, T. M. 2001, *ApJ*, 553, 1006  
 Cahoy, K. L., Marley, M. S., & Fortney, J. J. 2010, *ApJ*, 724, 189  
 Charbonneau, D., Berta, Z. K., Irwin, J., et al. 2009, *Natur*, 462, 891  
 Charnay, B., Meadows, V., & Leconte, J. 2015a, *ApJ*, 813, 15  
 Charnay, B., Meadows, V., Misra, A., Leconte, J., & Arney, G. 2015b, *ApJL*, 813, L1  
 Checlair, J., McKay, C. P., & Imanaka, H. 2016, *P&SS*, 129, 1  
 Christie, D. A., Mayne, N. J., Gillard, R. M., et al. 2022, *MNRAS*, 517, 1407  
 Cloutier, R., Charbonneau, D., Deming, D., Bonfils, X., & Astudillo-Defru, N. 2021, *AJ*, 162, 174  
 Colón, K. D., & Gaidos, E. 2013, *ApJ*, 776, 49  
 Corrales, L., Gavilan, L., Teal, D. J., & Kempton, E. M. R. 2023, *ApJL*, 943, L26  
 Coulombe, L.-P., Benneke, B., Challener, R., et al. 2023, arXiv:2301.08192  
 Crossfield, I. J. M., Barman, T., & Hansen, B. M. S. 2011, *ApJ*, 736, 132  
 Davidson, T. 1993, *A Simple and Accurate Method for Calculating Viscosity of Gaseous Mixtures Report of Investigations 9456*, US Bureau of Mines, <https://stacks.cdc.gov/view/cdc/10045>  
 de Mooij, E. J. W., Brogi, M., de Kok, R. J., et al. 2012, *A&A*, 538, A46  
 Désert, J.-M., Bean, J., Miller-Ricci Kempton, E., et al. 2011, *ApJL*, 731, L40  
 Drummond, B., Mayne, N. J., Baraffe, I., et al. 2018, *A&A*, 612, A105  
 Fortney, J. J., Marley, M. S., Lodders, K., Saumon, D., & Freedman, R. 2005, *ApJ*, 627, L69  
 Fortney, J. J., Mordasini, C., Nettelmann, N., et al. 2013, *ApJ*, 775, 80  
 Fortney, J. J., Sudarsky, D., Hubeny, I., et al. 2003, *ApJ*, 589, 615  
 Fraine, J. D., Deming, D., Gillon, M., et al. 2013, *ApJ*, 765, 127  
 Freedman, R. S., Lustig-Yaeger, J., Fortney, J. J., et al. 2014, *ApJS*, 214, 25  
 Gandhi, S., Brogi, M., & Webb, R. K. 2020, *MNRAS*, 498, 194  
 Gandhi, S., & Madhusudhan, N. 2017, *MNRAS*, 472, 2334  
 Gao, P., & Benneke, B. 2018, *ApJ*, 863, 165  
 Gao, P., Marley, M. S., & Ackerman, A. S. 2018, *ApJ*, 855, 86  
 Gao, P., Wakeford, H. R., Moran, S. E., & Parmentier, V. 2021, *JGRE*, 126, e06655  
 Gao, P., & Zhang, X. 2020, *ApJ*, 890, 93  
 Gharib-Nezhad, E., Iyer, A. R., Line, M. R., et al. 2021, *ApJS*, 254, 34  
 Gordon, I. E., Rothman, L. S., Hill, C., et al. 2017, *JQSRT*, 203, 3  
 Greene, T. P., Beatty, T. G., Rieke, M. J., & Schlawin, E. 2017, *JWST Proposal*, 1185  
 Harris, G. J., Tennyson, J., Kaminsky, B. M., Pavlenko, Y. V., & Jones, H. R. A. 2006, *MNRAS*, 367, 400  
 He, C., Hörst, S. M., Lewis, N. K., et al. 2020, *NatAs*, 4, 986  
 He, C., Radke, M., Moran, S. E., et al. 2023, arXiv:2301.02745  
 Hood, C. E., Fortney, J. J., Line, M. R., et al. 2020, *AJ*, 160, 198  
 Hörst, S. M., He, C., Lewis, N. K., et al. 2018, *NatAs*, 2, 303  
 Hu, R., & Seager, S. 2014, *ApJ*, 784, 63  
 Huang, X., Garnache, R. R., Freedman, R. S., Schwenke, D. W., & Lee, T. J. 2014, *JQSRT*, 147, 134  
 Jacobson, M. Z., & Turco, R. P. 1994, *AtmEn*, 28, 1327  
 Kasper, D., Bean, J. L., Oklopčić, A., et al. 2020, *AJ*, 160, 258  
 Kataria, T., Showman, A. P., Fortney, J. J., Marley, M. S., & Freedman, R. S. 2014, *ApJ*, 785, 92  
 Kawashima, Y., Hu, R., & Ikoma, M. 2019, *ApJL*, 876, L5  
 Kawashima, Y., & Ikoma, M. 2018, *ApJ*, 853, 7  
 Kawashima, Y., & Ikoma, M. 2019, *ApJ*, 877, 109  
 Kempton, E., Zhang, M., Bean, J. L., et al. 2023, *Natur*, in press  
 Kendrew, S., Scheithauer, S., Bouchet, P., et al. 2015, *PASP*, 127, 623  
 Khare, B. N., Sagan, C., Arakawa, K. T., et al. 1984, *Icar*, 60, 127  
 Kreidberg, L., Bean, J. L., Désert, J.-M., et al. 2014, *Natur*, 505, 69  
 Lafarga, M., Brogi, M., Gandhi, S., et al. 2023, *MNRAS*, 521, 1233  
 Lavvas, P., & Koskinen, T. 2017, *ApJ*, 847, 32  
 Lavvas, P., Koskinen, T., Steinrueck, M. E., García Muñoz, A., & Showman, A. P. 2019, *ApJ*, 878, 118

- Lavvas, P., Yelle, R. V., & Griffith, C. A. 2010, *Icar*, **210**, 832
- Li, G., Gordon, I. E., Rothman, L. S., et al. 2015, *ApJS*, **216**, 15
- Lopez, E. D., & Fortney, J. J. 2014, *ApJ*, **792**, 1
- Luque, R., Nowak, G., Hirano, T., et al. 2022, *A&A*, **666**, A154
- Luque, R., & Pallé, E. 2022, *Sci*, **377**, 1211
- Luque, R., Serrano, L. M., Molaverdikhani, K., et al. 2021, *A&A*, **645**, A41
- MacDonald, R. J., & Lewis, N. K. 2022, *ApJ*, **929**, 20
- Miller-Ricci, E., & Fortney, J. J. 2010, *ApJL*, **716**, L74
- Miller-Ricci Kempton, E., Zahnle, K., & Fortney, J. J. 2012, *ApJ*, **745**, 3
- Morley, C. V., Fortney, J. J., Kempton, E. M. R., et al. 2013, *ApJ*, **775**, 33
- Morley, C. V., Fortney, J. J., Marley, M. S., et al. 2015, *ApJ*, **815**, 110
- Moses, J. I., Line, M. R., Visscher, C., et al. 2013, *ApJ*, **777**, 34
- Mukherjee, S., Batalha, N. E., Fortney, J. J., & Marley, M. S. 2023, *ApJ*, **942**, 71
- Narita, N., Nagayama, T., Suenaga, T., et al. 2013, *PASJ*, **65**, 27
- Nettelmann, N., Fortney, J. J., Kramm, U., & Redmer, R. 2011, *ApJ*, **733**, 2
- Nixon, M. C., & Madhusudhan, N. 2021, *MNRAS*, **505**, 3414
- Oduber, F., Calvo, A. I., Blanco-Alegre, C., et al. 2021, *Water Res.*, **190**, 116758
- Ohno, K., & Okuzumi, S. 2018, *ApJ*, **859**, 34
- Ohno, K., Okuzumi, S., & Tazaki, R. 2020, *ApJ*, **891**, 131
- Orell-Miquel, J., Murgas, F., Pallé, E., et al. 2022, *A&A*, **659**, A55
- Parmentier, V., Showman, A. P., & Lian, Y. 2013, *A&A*, **558**, A91
- Piette, A. A. A., & Madhusudhan, N. 2020, *ApJ*, **904**, 154
- Piette, A. A. A., Madhusudhan, N., McKemmish, L. K., et al. 2020, *MNRAS*, **496**, 3870
- Polyansky, O. L., Kyuberis, A. A., Zobov, N. F., et al. 2018, *MNRAS*, **480**, 2597
- Rackham, B., Espinoza, N., Apai, D., et al. 2017, *ApJ*, **834**, 151
- Richard, C., Gordon, I., Rothman, L., et al. 2012, *JQSRT*, **113**, 1276
- Rogers, J. G., Schlichting, H. E., & Owen, J. E. 2023, *ApJL*, **947**, L19
- Rogers, L. A., & Seager, S. 2010, *ApJ*, **716**, 1208
- Rooney, C. M., Batalha, N. E., Gao, P., & Marley, M. S. 2022, *ApJ*, **925**, 33
- Rothman, L. S., Gordon, I. E., Babikov, Y., et al. 2013, *JQSRT*, **130**, 4
- Rothman, L. S., Gordon, I. E., Barber, R. J., et al. 2010, *JQSRT*, **111**, 2139
- Rustamkulov, Z., Sing, D. K., Liu, R., & Wang, A. 2022, *ApJL*, **928**, L7
- Saumon, D., Marley, M. S., Abel, M., Frommhold, L., & Freedman, R. S. 2012, *ApJ*, **750**, 74
- Schlawin, E., Beatty, T., Brooks, B., et al. 2023, *PASP*, **135**, 018001
- Southard, M., & Green, D. 2018, Perry's Chemical Engineers' Handbook (9th ed.; New York: McGraw-Hill Education)
- Spake, J. J., Oklopčić, A., Hillenbrand, L. A., et al. 2022, *ApJL*, **939**, L11
- Steinrueck, M. E., Showman, A. P., Lavvas, P., et al. 2021, *MNRAS*, **504**, 2783
- Stevenson, K. B. 2016, *ApJL*, **817**, L16
- Stock, J. W., Kitzmann, D., Patzer, A. B. C., et al. 2022, *MNRAS*, **517**, 4070
- Stock, J. W., Kitzmann, D., Patzer, A. B. C., & Sedlmayr, E. 2018, *MNRAS*, **479**, 865
- Sun, J., & Ariya, P. A. 2006, *AtmEn*, **40**, 795
- Teske, J. K., Turner, J. D., Mueller, M., & Griffith, C. A. 2013, *MNRAS*, **431**, 1669
- The JWST Transiting Exoplanet Community Early Release Science Team, Ahler, E.-M., Alderson, L., et al. 2023, *Natur*, **614**, 649
- Toon, O. B., Turco, R. P., Westphal, D., Malone, R., & Liu, M. S. 1988, *JAtS*, **45**, 2123
- Tsai, S.-M., Lee, E. K. H., Powell, D., et al. 2023, *Natur*, **617**, 483
- Turco, R. P., Hamill, P., Toon, O. B., Whitten, R. C., & Kiang, C. S. 1979, *JAtS*, **36**, 699
- Valencia, D., Guillot, T., Parmentier, V., & Freedman, R. S. 2013, *ApJ*, **775**, 10
- Van Eylen, V., Agentoft, C., Lundkvist, M. S., et al. 2018, *MNRAS*, **479**, 4786
- Wakeford, H. R., & Sing, D. K. 2015, *A&A*, **573**, A122
- West, R. A., & Smith, P. H. 1991, *Icar*, **90**, 330
- Western, C. M., Carter-Blatchford, L., Crozet, P., et al. 2018, *JQSRT*, **219**, 127
- Wilson, P. A., Colón, K. D., Sing, D. K., et al. 2014, *MNRAS*, **438**, 2395
- Yu, X., He, C., Zhang, X., et al. 2021, *NatAs*, **5**, 822
- Yurchenko, S. N., Barber, R. J., & Tennyson, J. 2011, *MNRAS*, **413**, 1828
- Yurchenko, S. N., & Tennyson, J. 2014, *MNRAS*, **440**, 1649
- Yurchenko, S. N., Tennyson, J., Barber, R. J., & Thiel, W. 2013, *JMoSp*, **291**, 69
- Zhang, X., & Showman, A. P. 2017, *ApJ*, **836**, 73