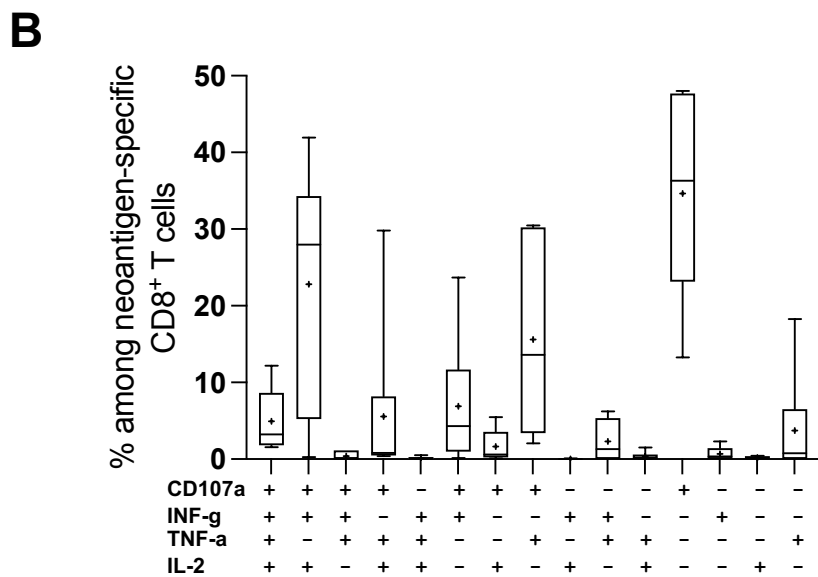
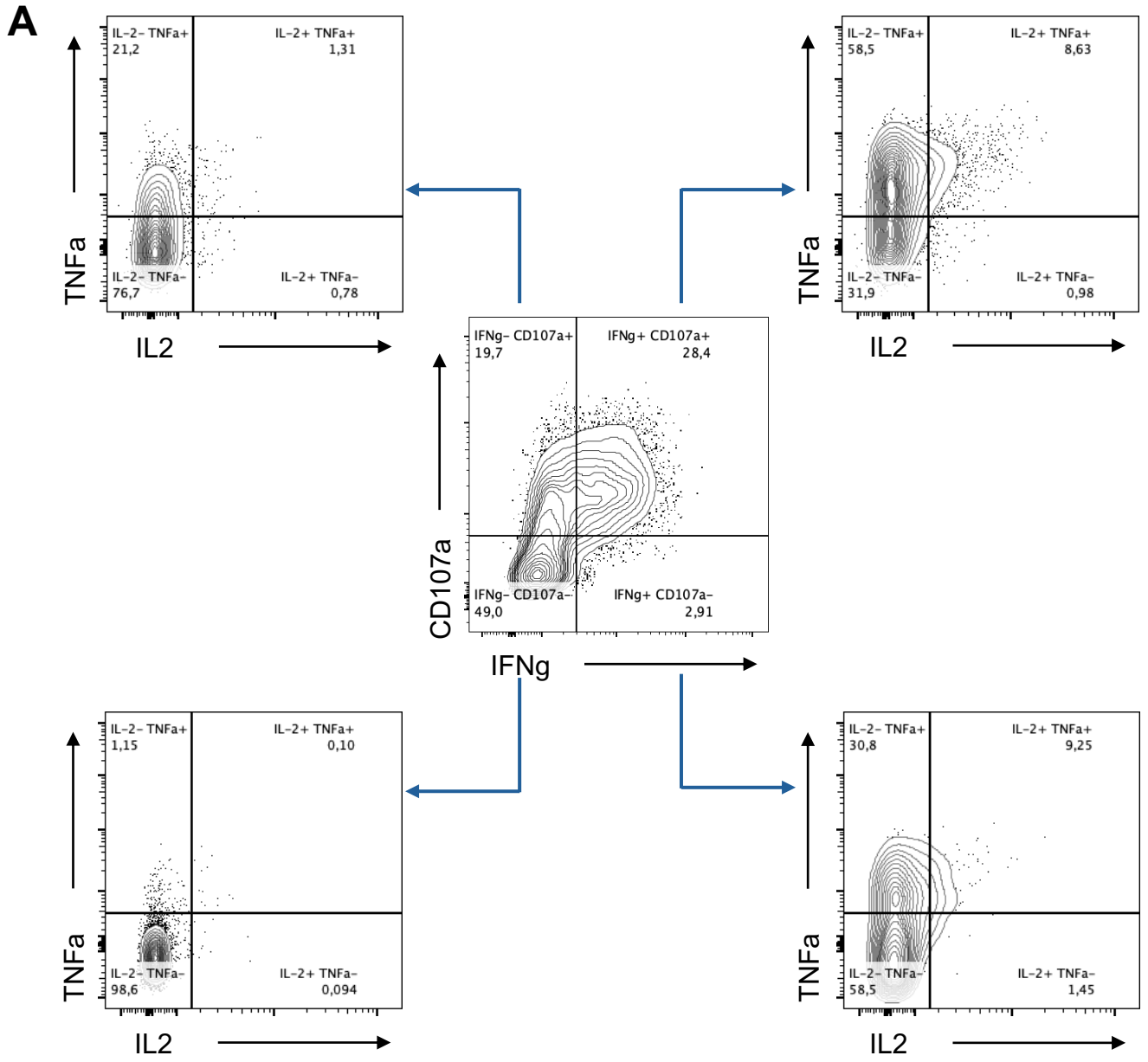
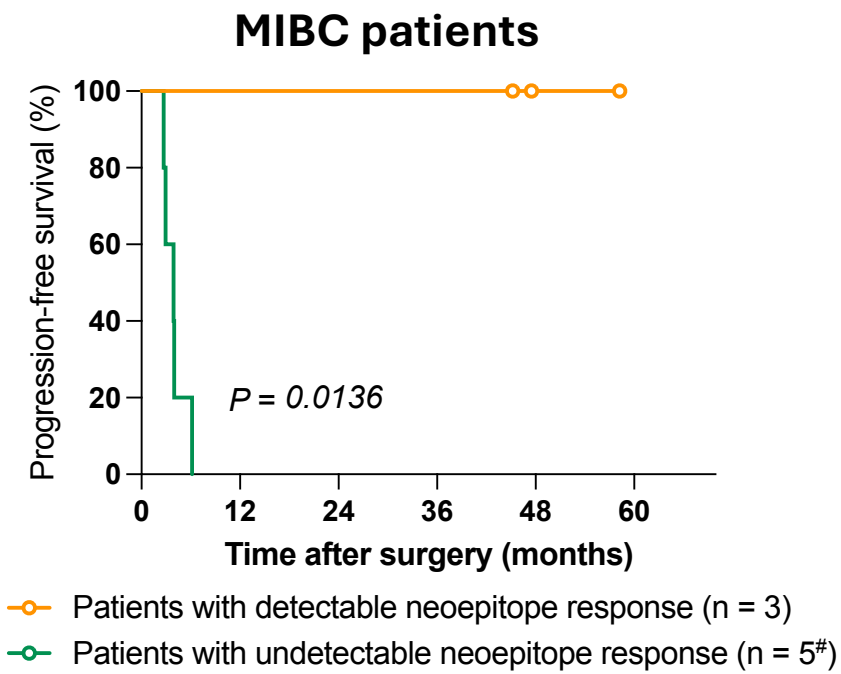
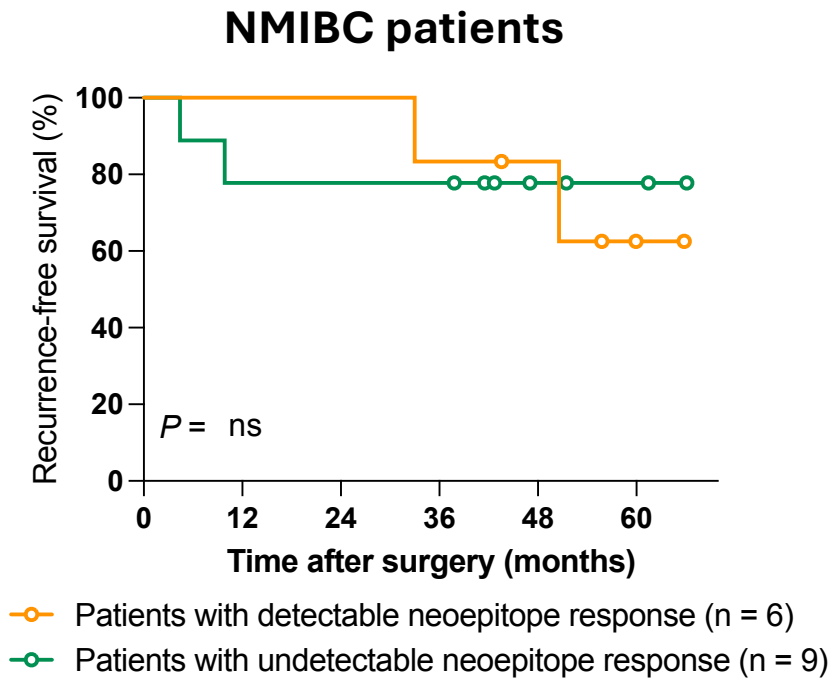


Supplementary Figure 1: Functional analysis of neoantigen-specific CD8⁺ T cells. (A) Representative example of CD107a, IFN- γ , TNF- α and IL-2 intracellular labelling in live CD3⁺CD8⁺ T cells upon neopeptide stimulation from patient URO516. (B) CD107a, IFN- γ , TNF- α and IL-2 expression profiles from TIL from 6 patients upon neopeptide stimulation.

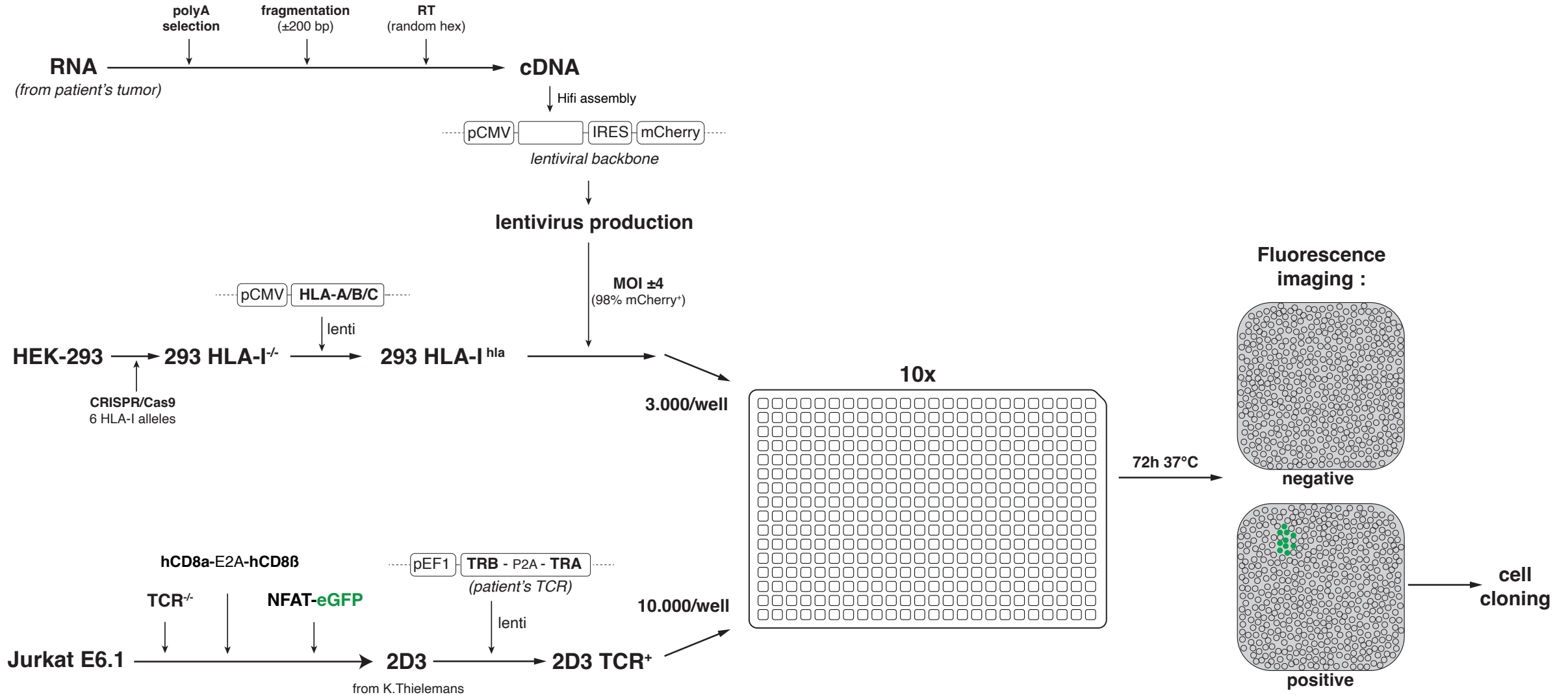


Supplementary Figure 2: Recurrence and progression free-survival based on the presence of detectable reactivity against neoantigen in non-muscle (NMIBC) and muscle invasive bladder cancer patients (MIBC)



[#] No clinical follow-up for one patient

Supplementary Figure 3: Overview of the cDNA library construction and screening strategy.



Supplementary Figure 4: Immunohistochemical detection of Beta-2-Microglobulin in the tumors of patients UC1 to UC3.

