



## King's Research Portal

DOI:

[10.1093/schbul/sbw020](https://doi.org/10.1093/schbul/sbw020)

*Document Version*

Publisher's PDF, also known as Version of record

[Link to publication record in King's Research Portal](#)

*Citation for published version (APA):*

Fusar-Poli, P., Cappucciati, M., Rutigliano, G., Heslin, M., Stahl, D. R., Brittenden, Z., Caverzasi, E., McGuire, P., & Carpenter, W. T. (2016). Diagnostic Stability of ICD/DSM First Episode Psychosis Diagnoses: Meta-analysis. *Schizophrenia Bulletin*, 42(6), 1395-1406. <https://doi.org/10.1093/schbul/sbw020>

### **Citing this paper**

Please note that where the full-text provided on King's Research Portal is the Author Accepted Manuscript or Post-Print version this may differ from the final Published version. If citing, it is advised that you check and use the publisher's definitive version for pagination, volume/issue, and date of publication details. And where the final published version is provided on the Research Portal, if citing you are again advised to check the publisher's website for any subsequent corrections.

### **General rights**

Copyright and moral rights for the publications made accessible in the Research Portal are retained by the authors and/or other copyright owners and it is a condition of accessing publications that users recognize and abide by the legal requirements associated with these rights.

- Users may download and print one copy of any publication from the Research Portal for the purpose of private study or research.
- You may not further distribute the material or use it for any profit-making activity or commercial gain
- You may freely distribute the URL identifying the publication in the Research Portal

### **Take down policy**

If you believe that this document breaches copyright please contact [librarypure@kcl.ac.uk](mailto:librarypure@kcl.ac.uk) providing details, and we will remove access to the work immediately and investigate your claim.

## Diagnostic Stability of ICD/DSM First Episode Psychosis Diagnoses: Meta-analysis

Paolo Fusar-Poli<sup>\*1,2</sup>, Marco Cappucciati<sup>1,3</sup>, Grazia Rutigliano<sup>1,4</sup>, Margaret Heslin<sup>1</sup>, Daniel Stahl<sup>1</sup>, Zera Brittenden<sup>1</sup>, Edgardo Caverzasi<sup>3</sup>, Philip McGuire<sup>1</sup>, and William T. Carpenter<sup>5</sup>

<sup>1</sup>Institute of Psychiatry Psychology Neuroscience, King's College London, London, UK; <sup>2</sup>OASIS Clinic, SLaM NHS Foundation Trust, London, UK; <sup>3</sup>Department of Brain and Behavioural Sciences, University of Pavia, Pavia, Italy; <sup>4</sup>Department of Clinical and Experimental Medicine, University of Pisa, Pisa, Italy; <sup>5</sup>Maryland Psychiatric Research Center, University of Maryland School of Medicine, and VA Capitol Network (VISN 5) MIRECC, Baltimore, MD

\*To whom correspondence should be addressed; Department of Psychosis Studies, Institute of Psychiatry, PO63, De Crespigny Park, SE58AF London, UK; tel: +44-(0)-20-7848-0900, fax: +44-(0)-207-848-0976, e-mail: [p.fusar@libero.it](mailto:p.fusar@libero.it)

**Background:** Validity of current International Classification of Disease/Diagnostic and Statistical Manual of Mental Disorders (ICD/DSM) first episode psychosis diagnoses is essential in clinical practice, research, training and public health. **Method:** We provide a meta-analytical estimate of prospective diagnostic stability and instability in ICD-10 or DSM-IV first episode diagnoses of functional psychoses. Independent extraction by multiple observers. Random effect meta-analysis conducted with the “metaprop,” “metaninf,” “metafunnel,” “metabias,” and “metareg” packages of STATA13.1. Moderators were tested with meta-regression analyses. Heterogeneity was assessed with the  $I^2$  index. Sensitivity analyses tested robustness of results. Publication biases were assessed with funnel plots and Egger’s test. **Findings:** 42 studies and 45 samples were included, for a total of 14 484 first episode patients and an average follow-up of 4.5 years. Prospective diagnostic stability ranked: schizophrenia 0.90 (95% CI 0.85–0.95), affective spectrum psychoses 0.84 (95% CI 0.79–0.89), schizoaffective disorder 0.72 (95% CI 0.61–0.73), substance-induced psychotic disorder 0.66 (95% CI 0.51–0.81), delusional disorder 0.59 (95% CI 0.47–0.71), acute and transient psychotic disorder/brief psychotic disorder 0.56 (95% CI 0.62–0.60), psychosis not otherwise specified 0.36 (95% CI 0.27–0.45), schizophreniform disorder 0.29 (95% CI 0.22–0.38). Diagnostic stability within schizophrenia spectrum psychoses was 0.93 (95% CI 0.89–0.97); changes to affective spectrum psychoses were 0.05 (95% CI 0.01–0.08). About 0.10 (95% CI 0.05–0.15) of affective spectrum psychoses changed to schizophrenia spectrum psychosis. Across the other psychotic diagnoses there was high diagnostic instability, mostly to schizophrenia. **Interpretation:** There is meta-analytical evidence for high prospective diagnostic stability in schizophrenia spectrum

and affective spectrum psychoses, with no significant ICD/DSM differences. These results may inform the development of new treatment guidelines for early psychosis and impact drug licensing from regulatory agencies.

**Key words:** schizophrenia/diagnostic stability/psychosis/ICD/DSM

### Introduction

Unlike most of other areas of medicine, psychiatric diagnoses, as operationalized in the International taxonomies represented by the World Health Organization’s (International Classification of Diseases [ICD of WHO]) and American Psychiatric Association’s (Diagnostic and Statistical Manual of Mental Disorders [DSM of APA]), are derived from expert opinion,<sup>1</sup> with the specific aim of improving reliability across clinicians. The National Institute of Mental Health commented: “unlike our definitions of ischemic heart disease, lymphoma or AIDS, the DSM diagnoses are based on a consensus about clusters of clinical symptoms, not any objective laboratory measure.”<sup>2</sup> Since no objective tests or markers are on the horizon,<sup>3</sup> clinical psychiatry is anchored to “the patient’s altered experience, expression and existence, associated with suffering in self and/or others.”<sup>4</sup> Therefore, assessing validity of current diagnostic classification based on psychopathology<sup>4</sup> is essential, in particular for patients at their first contact with mental health services.

The quantification of diagnostic stability and instability of first episode psychosis diagnoses is of paramount practical import,<sup>5</sup> to ensure diagnostic validity<sup>6</sup> and optimize early interventions,<sup>7</sup> in light of the limited treatment achievements in the late stages of the disorder.<sup>8,9</sup>

For example, evidence of diagnostic stability within the schizophrenia spectrum psychoses and affective spectrum psychoses is fundamental to guide accurate early interventions. The National Institute of Health and Care Excellence (NICE) recommends the clinical guideline 178 (CG178) for schizophrenia spectrum psychoses, but CG38/90 in case of affective spectrum psychoses (recommendation 1.3.4.3<sup>10</sup>). These guidelines make substantive differential clinical recommendations such as use of pharmacological and psychological interventions, information and support for carers and patients, management of crisis and risk, long term care and strategies to promote recovery.<sup>10</sup> Several studies addressing diagnostic stability of first episode psychosis diagnoses have been published, but the results are highly heterogeneous. For example, some studies suggested that the first episode schizoaffective disorder has the highest 2 years prospective diagnostic stability, followed by affective spectrum psychoses and only in third ranking by schizophrenia.<sup>11</sup> Contrasting findings suggested that first episode schizophrenia exhibited the highest 2 years prospective diagnostic stability, and the schizoaffective disorder the lowest stability.<sup>12</sup> Similarly, some studies found a greater stability for some first episode psychosis diagnoses as assigned using ICD-10 rather than DSM-IV criteria in the same patients,<sup>11</sup> while others found the 2 systems to have similar prospective consistency.<sup>13</sup>

We present here the first meta-analysis of the diagnostic stability and instability of ICD-10/DSM-IV functional first episode psychosis diagnoses. Our first aim was to test the magnitude and consistency of prospective diagnostic stability of first episode psychosis diagnoses, while at the same time addressing diagnostic changes over time. Our analysis was complemented by investigation of some potential moderators (eg, ICD-10 vs DSM-IV). Our secondary aim was to meta-analytically address the magnitude of retrospective diagnostic stability of first episode psychosis diagnoses.

## Methods

### *Search Strategy*

Two independent investigators (M.C., Z.B.) conducted 2-step literature searches according to a specific protocol. First, the Web of Knowledge database was searched, incorporating both the Web of Science and MEDLINE. The search was extended until June 30, 2015, including abstracts in English language only. The electronic research adopted several combinations of the following keywords: “First episode psychosis,” “Diagnostic accuracy,” “Sensitivity,” “Specificity,” “Psychosis prediction,” “Psychosis onset,” “Diagnostic stability,” “Prediction,” “DSM-IV,” “ICD-10,” and “Follow-up”. Second, we used Scopus to investigate citations of possible previous reviews/meta-analyses on diagnostic stability of first episode psychosis diagnoses, and a manual search of the reference

lists of retrieved articles. Articles identified through these 2 steps were then screened for the selection criteria on basis of abstract reading. The articles surviving this selection were assessed for eligibility on basis of full-text reading, following the MOOSE checklist ([supplementary table 1](#)).<sup>14</sup>

### *Selection Criteria*

Studies were eligible for inclusion if the following criteria were fulfilled: (a) were original articles, written in English; (b) included a group of ICD-10 or DSM-IV/DSM-IV-TR first episode psychosis patients (defined as first-ever admission to mental health services), diagnostically assessed at baseline and follow-up; and (c) reported the baseline and follow-up number of specific psychotic diagnoses: schizophrenia, schizoaffective disorders, schizophreniform disorder, affective spectrum psychoses, delusional disorder, substance-induced psychotic disorder, psychosis not otherwise specified, acute and transient psychotic disorder/brief psychotic disorder. Further details on the specific ICD-10/DSM-IV diagnostic codes are appended in [supplementary methods](#). When data were not directly presented they were indirectly extracted from associated data. Corresponding authors were contacted to retrieve additional data when possible. Exclusion criteria were: (a) abstracts, pilot datasets, and papers in languages other than English; (b) articles not employing the internationally ICD/DSM validated diagnoses for psychosis; (c) articles not providing enough meta-analytical data; (d) articles reporting on organic psychoses, and (e) articles with overlapping datasets. Specifically, in case of multiple publications deriving from the same study population, we selected the articles reporting the largest and most recent data set. Literature search was summarized according to the PRISMA guidelines.<sup>15</sup>

### *Recorded Variables*

Data extraction was independently performed by 2 investigators (M.C., Z.B.). To estimate the primary outcome variable we extracted the baseline sample size and the number of patients with specific psychotic diagnoses at follow-up time. Moderators tested in meta-regression analyses are detailed below. Quality assessment is described below here.

### *Quality Assessment*

Quality assessment in observational research is controversial, with no clear consensus on rating methods or their appropriate use in the analysis. We adapted the Newcastle Ottawa Scale (NOS) for the evaluation of nonrandomized studies ([http://www.ohri.ca/programs/clinical\\_epidemiology/oxford.asp](http://www.ohri.ca/programs/clinical_epidemiology/oxford.asp)). The scale evaluates the quality of observational studies allocating a maximum of 9 stars for higher quality. This tool has been adopted in recent meta-analyses.<sup>16</sup>

### Statistical Analysis

The primary outcome is the prospective diagnostic stability/instability of ICD/DSM first episode psychosis diagnoses over time. The prospective diagnostic stability is defined as the proportion of baseline patients retaining the same psychotic diagnosis over time.<sup>12</sup> In case of remission or full recovery at follow-up, the initial diagnosis is unchanged. The prospective diagnostic instability of first episode psychosis diagnoses over time is defined as the complementary proportion of baseline patients shifting to other diagnoses at follow-up. The prospective diagnostic stability/instability was computed across each initial diagnostic category. We performed additional analyses clustering the individual diagnoses across diagnostic spectra relevant for the NICE clinical guidelines<sup>10</sup>: schizophrenia spectrum psychoses (schizophrenia, schizophreniform disorder, schizoaffective disorder) and affective spectrum psychoses (mania with psychosis and/or bipolar disorder with psychosis and/or depression with psychosis). The secondary outcome is the retrospective diagnostic stability/instability across each diagnosis, defined as the proportion of follow-up patients that receives the same diagnosis that they had at baseline, or another diagnosis as compared to that received at baseline respectively.<sup>12</sup> Meta-analysis was conducted with the “metaprop” package<sup>17</sup> of Stata 13.1. This package is specifically developed for pooling proportions in a meta-analysis of multiple studies. The CIs are based on score (Wilson) procedures.<sup>18</sup> As proportions were expected to be often small we used Freeman-Tukey Double Arcsine transformation<sup>19</sup> to stabilize the variances and then we performed a random effect meta-analysis implementing the Der Simonian-Laird method.<sup>20</sup> The influence of moderators (age, gender, time to follow-up, comorbid substance abuse, ICD-10 vs DSM-IV diagnostic criteria, publication year, quality assessment, clinical setting of initial diagnosis, baseline functional level measured with the Global Assessment of Functioning [GAF] scale, duration of untreated psychosis) on the diagnostic instability of each diagnostic category was tested using meta-regression analyses with the “metareg” function.<sup>21</sup> The slope of meta-regression line ( $\beta$ -coefficient: direct [+] or inverse [-]) indicates the strength of a relationship between moderator and outcome. The meta-regressions were conducted when at least 10 studies were available for each moderator.<sup>22</sup> Because of the large number of regressions the alpha level was reduced to .01<sup>23</sup> as a compromise between a strict control of the familywise error and not having any power to detect any relationships. Tests with a *P* value between .01 and .05 were discussed as trends. Subgroup analyses were additionally used to further investigate the impact of ICD-10 vs DSM-IV criteria on diagnostic stability and instability of each specific psychotic diagnosis. Heterogeneity among study point estimates was assessed using *Q* statistics with the proportion of the total variability in the effect size estimates being

evaluated with the *I*<sup>2</sup> index,<sup>24</sup> which does not depend upon the number of studies included. As meta-analysis of observational studies is supposed to be characterized by significant heterogeneity, random effect models were used. Sensitivity analyses were also conducted to investigate the influence of each single study on the overall prospective diagnostic instability by omitting 1 study at a time, using Stata’s user-written function, “metaninf.”<sup>25,26</sup> A study was considered to be influential if the pooled mean estimate without it was not within the 95% confidence bounds of the overall mean. Publication biases were assessed with the “metafunnel” function of Stata which produced funnel plots for assessing small-study reporting bias in meta-analysis<sup>27</sup> and with the “metatrim”<sup>28</sup> function of Stata.

## Results

### Database

Literature search (PRISMA flow-chart [figure 1](#)) uncovered 42 independent articles. The list of excluded studies is detailed in the [supplementary table 2](#). There were 23 studies employing ICD-10 and 22 employing DSM-IV, with 3 studies contributing 2 samples (ICD-10 and DSM-IV) each,<sup>13,29,30</sup> for an overall of 45 independent samples. The final database comprised 14 484 first episode patients, 10 510 diagnosed with ICD-10 and 3974 diagnosed with DSM-IV. The mean age of the patients was 29 years (median 27 years, age range 16–75) and the mean proportion of females was 0.49. Age, gender, diagnostic instrument employed to assign the psychotic diagnosis, quality assessment, baseline sample size are detailed in [table 1](#), while duration of untreated psychosis and operationalization of first episode of psychosis are detailed in [supplementary table 3](#). The mean follow-up time was 4.5 years ( $n = 45$ , 53.86 months, SD = 51.51, IQR 23–77). All studies but one<sup>31</sup> employed the same diagnostic instrument at baseline and follow up.

### Meta-analytical Prospective Diagnostic Stability of ICD/DSM First Episode Psychosis Diagnoses

Meta-analytical diagnostic stability of first episode psychosis diagnoses across each diagnostic category is detailed in the boldfaced diagonal of [table 2](#), while diagnostic instability is detailed in the other cells. Between group analyses found no ICD-10 vs DSM-IV significant differences.

Point estimate diagnostic stability of first episode psychosis diagnoses was highest for schizophrenia (0.90), and high for affective spectrum psychoses (0.84). Diagnostic stability was moderate for schizoaffective disorder (0.72) and moderate to low for substance-induced psychotic disorder (0.66), delusional disorder (0.59) and acute psychotic disorder/ brief psychotic disorder (0.56). Diagnostic stability was very low for psychosis not otherwise specified (0.36) and schizophreniform disorder

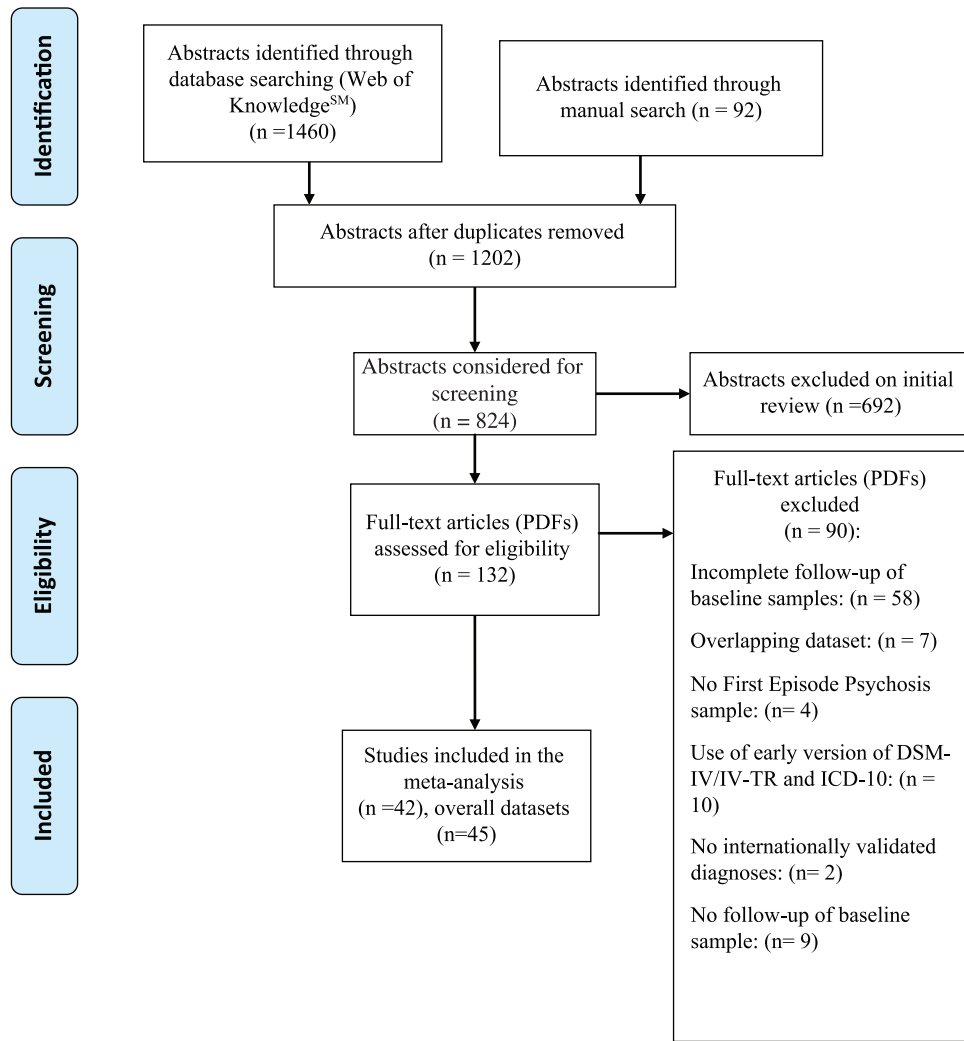


Fig. 1. PRISMA Flow Chart.

(0.29). In a subset of studies we further addressed the diagnostic stability of mania/bipolar disorder with psychosis (0.90) and depression with psychosis (0.73) separately (supplementary table 4).

When the analyses were repeated across the schizophrenia vs affective psychosis spectra (table 3), diagnostic stability of schizophrenia spectrum psychoses was 0.93, while for affective spectrum psychoses it was 0.84. Changes from a schizophrenia spectrum to an affective spectrum were infrequent, accounting for only 0.05 of initial cases. On the other hand, about 0.1 of initial affective spectrum psychoses shifted towards schizophrenia spectrum psychoses.

About one-third of the initial cases of delusional disorders shifted towards schizophrenia spectrum disorders (0.29 schizophrenia, 0.04 schizoaffective disorder). Diagnostic changes were also frequent from an initial acute and transient psychotic disorder/brief psychotic disorder: one-fourth of them towards schizophrenia spectrum disorders (0.21 schizophrenia, 0.02 schizophreniform

disorder, 0.02 schizoaffective disorder) and 0.12 of them towards affective spectrum psychoses. Substance-induced psychotic disorder shifted most frequently towards schizophrenia spectrum psychoses (0.17 schizophrenia, 0.04 schizoaffective disorder, 0.02 schizophreniform disorder). Among the initial cases of psychosis not otherwise specified, about one-third (0.36) retained the initial diagnosis and one-third (0.31) shifted towards schizophrenia.

#### Meta-regressions, Publication Biases, and Sensitivity Analyses

Meta-regressions analyses across each psychotic category clarified that the publication year impacted diagnostic instability of schizophrenia, schizophreniform disorder, delusional disorder (at trend level uncorrected for multiple comparisons) and acute and transient psychotic disorder/brief psychotic disorder (corrected for multiple comparisons, supplementary table 5), with higher instability over the most recent years. Similarly, the inpatient setting

**Table 1.** List of Studies Included in the Meta-analysis

Study Name and Year of Publication	NOS Score (9 = Max.); Comorbid Substance Misuse (%)	Diagnostic Manual	FEP Whole Sample	Age (Mean ± SD)	Gender (% Females)	Follow-up (Months ± SD)
1. Okasha, et al 1993 <sup>32</sup>	5; NA	ICD-10	50	27 ± 9.8	50	12 ± NA
2. Jørgensen, et al 1995 <sup>33</sup>	5; NA	ICD-10	75	43 ± 14	60	96 ± NA
3. Jørgensen, et al 1997 <sup>34</sup>	6; NA	ICD-10	46	NA	NA	12 ± NA
4. Das, et al 1999 <sup>35</sup>	4; No	ICD-10	40	25.7 ± 9	70	1 ± NA
5. Schwartz, et al <sup>a</sup> 2000 <sup>12</sup>	8; Yes (30.2)	DSM-IV	514 <sup>b</sup>	28 ± NA	NA	24 ± NA
6. Sajith, et al 2002 <sup>36</sup>	6; NA	ICD-10	45	26.9 ± 10.9	71.1	36.5 ± NA
7. Jäger, et al 2003 <sup>31</sup>	5; NA	ICD-10	73	31.8 ± 14.6	50.7	60 ± NA
8. Jarbin, et al 2003 <sup>37</sup>	6; Yes (NA)	DSM-IV	67 <sup>b</sup>	16 ± NA	51.5	122.4 ± NA
9. Amini, et al 2005 <sup>29</sup>	6; Yes (NA)	DSM-IV; ICD-10	48	23.5 ± 7.7	45.8	12 ± NA
10. Correll, et al 2005 <sup>38</sup>	5; Yes (NA)	DSM-IV	26	16.2 ± 2.7	34.5	22.8 ± 19.8
11. Rufino, et al 2005 <sup>39</sup>	4; No	DSM-IV	59	NA	27.1	19.4 ± 6.1
12. Schimmelmänn, et al 2005 <sup>40</sup>	6; Yes (59.1)	DSM-IV	492	22 ± 3.6	36.8	18 ± NA
13. Suda, et al 2005 <sup>41</sup>	6; NA	ICD-10	25	37.8 ± 9.5	76	116.4 ± 45.6
14. Whitty, et al 2005 <sup>42</sup>	6; Yes (NA)	DSM-IV	147	NA	NA	48 ± NA
15. Abe, et al 2006 <sup>43</sup>	5; NA	ICD-10	16	34.8 ± 9.9	50	144 ± NA
16. Addington, et al 2006 <sup>44</sup>	7; Yes (43)	DSM-IV	228	24.5 ± 8.2	32.9	12 ± NA
17. Thangadurai, et al 2006 <sup>45</sup>	4; NA	ICD-10	87	29.8 ± 11	48	13.2 ± 11.7
18. Boks, et al 2006 <sup>46</sup>	5; NA	DSM-IV	29	26.9 ± 6.3	37.9	24 ± NA
19. Rahm, et al 2007 <sup>47</sup>	6; Yes (NA)	DSM-IV	146	NA	NA	36 ± NA
20. Subramaniam, et al 2007 <sup>48</sup>	6; No	DSM-IV	154	28.4 ± 6.6	49	24 ± NA
21. Fraguas, et al 2008 <sup>49</sup>	4; No	DSM-IV	24	15.7 ± 1.6	25	24
22. Haahr, et al 2008 <sup>50</sup>	6; Yes (38)	DSM-IV	279 <sup>b</sup>	NA	NA	24 ± NA
23. Chang, et al 2009 <sup>51</sup>	6; Yes (11.7)	ICD-10	166	19.8 ± 3.1	46.4	53.4 ± 13.3
24. Crebbin, et al 2009 <sup>52</sup>	6; Yes (100)	ICD-10	35	25.6 ± 8.4	17.1	24 ± NA
25. Pedrós, et al 2009 <sup>53</sup>	7; Yes (NA)	DSM-IV	48	28.1 ± 8.7	NA	24 ± NA
26. Salem, et al 2009 <sup>54</sup>	5; NA	ICD-10	69	27.5 ± 6.6	32.4	72 ± NA
27. Salvatore, et al 2009 <sup>55</sup>	7; Yes (51.2)	DSM-IV-TR	500	31.7 ± 13.7	45	24 ± NA
28. Aadamsoo, et al 2011 <sup>56</sup>	6; NA	ICD-10	107	NA	60	24 ± NA
29. Barak, et al 2011 <sup>57</sup>	5; Yes (NA)	ICD-10	83	75.4 ± 9.3	56.6	27.7 ± NA
30. Castro-Fornieles, et al 2011 <sup>58</sup>	7; Yes (NA)	DSM-IV	83	15.5 ± 1.7	32.5	24 ± NA
31. Kim, et al 2011 <sup>59</sup>	6; No	DSM-IV	150	27.7 ± 9.5	NA	27.1 ± 25.3
32. Möller, et al 2011 <sup>30</sup>	8; NA	DSM-IV; ICD-10	136; 123	NA	NA	180 ± NA
33. Salvatore, et al 2011 <sup>11</sup>	8; Yes (51.2)	ICD-10	500	31.7 ± 13.7	45	24 ± NA
34. Narayanaswamy, et al 2012 <sup>60</sup>	5; Yes (8.8)	ICD-10	57	30.7 ± 11.8	65	24 ± NA
35. Pillmann, et al 2012 <sup>61</sup>	7; NA	ICD-10	71	NA	NA	148.8 ± 87.6
36. Kingston, et al <sup>a</sup> 2013 <sup>62</sup>	8; No	DSM-IV	187 <sup>b</sup>	42.7 ± 18.6	41.3	76.8 ± 27.6
37. Pope, et al 2013 <sup>63</sup>	6; Yes (31.3)	DSM-IV-TR	214	22.6 ± 4	30.4	12 ± NA
38. Castagnini & Foldager 2014 <sup>64</sup>	8; Yes (NA)	ICD-10	5426	28 ± 11.7	47.4	111.6
39. Kapfhammer, et al 2014 <sup>65</sup>	6; No	DSM-IV-TR	55 <sup>b</sup>	NA	NA	144 ± NA
40. Queirazza, et al 2014 <sup>66</sup>	7; Yes (NA)	ICD-10	2923	37.4 ± 17.7	45.5	48 ± 47.6
41. Heslin, et al 2015 <sup>13</sup>	8; Yes (NA)	DSM-IV-TR; ICD-10	402 <sup>b</sup> ; 401 <sup>b</sup>	30.8 ± 10.7	42.9	128.9 ± 14
42. Ranjan, et al 2015 <sup>67</sup>	5; NA	ICD-10	30	NA	NA	3 ± NA

Note: DSM-IV/IV-TR, Diagnostic and Statistical Manual of Mental Disorders, 4th Edition/Text Revision; ICD-10; International Statistical Classification of Diseases and Related Health Problems, 10th Edition; FEP, First Episode Psychosis; NA, data not available; NOS, Newcastle Ottawa Scale.

<sup>a</sup>Extended baseline assessment.

<sup>b</sup>After excluding patients not meeting inclusion criteria (ie, with organic psychoses or with non-psychotic diagnoses).

during formulation of an initial diagnosis was associated with reduced diagnostic instability as compared to a mixed setting for schizophrenia, affective spectrum psychoses, delusional disorder (at trend level uncorrected for multiple comparisons), acute and transient psychotic disorder/brief psychotic disorder (corrected for multiple comparisons,

supplementary table 5). A better quality of studies was associated with increased diagnostic instability for acute and transient psychotic disorder/brief psychotic disorder (corrected for multiple comparisons, supplementary table 5). There was no effect for age, gender, comorbid substance abuse, baseline ICD-10 or DSM-IV diagnostic criteria,

**Table 2.** Meta-analytical Cross Tabulation of Prospective Stability and Instability (Average 4.5 y) of DSM-IV/ICD10 First Episode Psychosis Diagnoses

Baseline Diagnosis	Subjects	Follow-up Diagnosis													
		SZ	SA	SF (DSM Only)	ASP	DD	ATPD/BPD	SI	PNOS	Others					
		Mean	95% CI	Mean	95% CI	Mean	95% CI	Mean	95% CI	Mean	95% CI	Mean	95% CI	Mean	95% CI
SZ (ICD/DSM)	24, 1603	<b>0.9</b>	<b>0.85-0.95</b>	0.04	0-0.09	0	0-0.06	0.03	0-0.08	0	0-0.05	0.03	0-0.08	0	0-0.06
SA (ICD/DSM)	19, 317	0.16	0.05-0.27	<b>0.72</b>	<b>0.61-0.83</b>	0.01	0-0.14	0.08	0-0.19	0	0-0.1	0.01	0-0.12	0.02	0-0.12
SF (DSM only)	20, 573	0.57	0.48-0.65	0.05	0-0.12	<b>0.29</b>	<b>0.22-0.38</b>	0.06	0.01-0.08	0	0-0.08	0.01	0-0.11	0.01	0-0.08
ASP (ICD/DSM)	23, 1705	0.05	0-0.09	0.05	0.01-0.1	0	0-0.06	<b>0.84</b>	<b>0.79-0.89</b>	0.01	0-0.05	0.01	0-0.05	0.01	0-0.06
DD (ICD/DSM)	22, 253	0.29	0.17-0.41	0.04	0-0.16	0.01	0-0.16	0.05	0-0.17	<b>0.59</b>	<b>0.47-0.71</b>	0.01	0-0.13	0.01	0-0.14
ATPD/BPD (ICD, DSM)	40, 9412	0.21	0.16-0.25	0.02	0-0.06	0.02	0-0.14	0.12	0.07-0.16	0.01	0-0.06	<b>0.56</b>	<b>0.52-0.60</b>	0.01	0-0.06
SI (ICD/DSM)	10, 164	0.17	0.1-0.31	0.04	0-0.19	0.02	0-0.21	0.06	0-0.21	0.02	0-0.17	0.02	0-0.18	<b>0.66</b>	<b>0.51-0.81</b>
PNOS (ICD/DSM)	24, 457	0.31	0.21-0.39	0.1	0.01-0.19	0.02	0-0.12	0.07	0-0.16	0.03	0-0.12	0.04	0-0.14	0.01	0-0.10
														<b>0.36</b>	<b>0.27-0.45</b>

Note: SZ, schizophrenia; SA, schizoaffective disorder; SF, schizophreniform disorder; ASP, affective spectrum psychoses; DD, delusional disorder; ATPD/BPD, acute and transient psychotic disorder/brief psychotic disorder; SI, substance-induced psychotic disorder; PNOS, psychosis not otherwise specified; Other, mental disorder other than psychosis. In all the cells, subgroup analyses (ICD-10 vs DSM-IV) revealed no significant between groups differences. Diagnostic stability and instability results stratified for ICD-10 and DSM-IV are appended in [supplementary materials](#). The diagnostic stability data are **boldfaced**.

**Table 3.** Meta-analytical Cross Tabulation of Prospective Diagnostic Stability and Instability (Average 4.5 y) of ICD-10/DSM-IV First Episode Schizophrenia Spectrum and Affective Spectrum Psychoses

Baseline Diagnosis	Studies, Subjects	Follow-up Diagnosis													
		Schizophrenia Spectrum		Affective Spectrum		DD		ATPD/BPD		SI		PNOS		Other	
		Mean	95% CI	Mean	95% CI	Mean	95% CI	Mean	95% CI	Mean	95% CI	Mean	95% CI	Mean	95% CI
Schizophrenia spectrum psychoses (ICD-10/DSM-IV)	26, 2493	<b>0.93<sup>a</sup></b>	<b>0.89–0.97</b>	0.05	0.01–0.08	0	0–0.04	0	0–0.04	0.01	0–0.05	0.01	0–0.05	0	0–0.04
Affective spectrum psychoses (ICD-10/DSM-IV)	23, 1705	0.1	0.05–0.15	<b>0.84<sup>b</sup></b>	<b>0.79–0.89</b>	0.01	0–0.05	0	0–0.05	0.01	0–0.06	0.01	0–0.06	0.03	0–0.08

*Note:* DD, delusional disorder; ATPD/BPD, acute and transient psychotic disorder/brief psychotic episode; SI, substance-induced psychotic disorder; PNOS, psychosis not otherwise specified; Other, mental disorder other than psychosis. Schizophrenia spectrum psychoses: schizoaffective disorder, schizophreniform disorder, schizophrenia. The diagnostic consistency data are **boldfaced**.

<sup>a</sup>Subgroup analyses within the studies enrolling first episode patients aged less than 16 years old with available data<sup>37,49,58</sup>: mean 0.95, 95% CI 0.84–1.

<sup>b</sup>Subgroup analyses within the studies enrolling first episode patients aged less than 16 years old with available data<sup>37,49,58</sup>: mean 0.84, 95% CI 0.73–0.93.

baseline GAF level and duration of follow-up while there were not enough studies to investigate the effect of duration of untreated psychosis (supplementary table 5).

Visual inspection of funnel plots revealed no asymmetry, and metatrim analyses identified no studies to cut and fill (supplementary figure 1). Sensitivity analyses of overall diagnostic instability of ICD-10 (supplementary figure 2a) and DSM-IV (supplementary figure 2b) studies uncovered no outliers and confirmed robustness of results.

#### *Meta-analytical Retrospective Diagnostic Stability of ICD/DSM First Episode Psychosis Diagnoses*

Meta-analytical retrospective diagnostic stability was high for acute and transient psychotic disorder/brief psychotic disorder and schizophreniform disorder, modest for affective spectrum psychoses and delusional disorder, low for schizophrenia and schizoaffective disorder, psychosis not otherwise specified and substance-induced psychotic disorder (supplementary table 6), averaging 0.6 for schizophrenia spectrum psychoses and 0.64 for affective spectrum psychoses (supplementary table 7).

#### **Discussion**

We present here the first meta-analytical estimate of diagnostic stability of first episode psychosis diagnoses. Our database was large, including 42 studies and 45 samples for a total of 14 484 subjects, followed up for a mean period of 4.5 years. There was significant construct variability<sup>68</sup> across prospective diagnostic stability of different first-episode psychotic diagnoses: schizophrenia 0.90, affective spectrum psychoses 0.84, schizoaffective disorder 0.72, substance-induced psychotic disorder 0.66, delusional disorder 0.59, acute and transient psychotic disorder/brief psychotic disorder 0.56, psychosis not otherwise specified 0.36, and schizophreniform disorder 0.29.

This is the first robust meta-analytical evidence documenting a very high diagnostic stability of schizophrenia, which is comparable to other clinical diagnoses in medicine. For example, a study in 4141 patients affected with dementia or mild cognitive impairment reported a similar (2 y) prospective diagnostic stability of 0.91.<sup>69</sup> Another study in 783 patients affected with migraine or tension type headache reported a (7 mo) diagnostic stability of 0.66 and 0.63, respectively.<sup>70</sup> Prospective stability of specific first-episode diagnoses may be of relevance for agencies licensing the use of drugs and medical devices such as the Food and Drug Administration (FDA) in the United States or the Medicines & Healthcare Products Regulatory Agency (MHRA) in United Kingdom and the European Medicine Agency (EMA) in the European Union. For example, the FDA has approved the use of paliperidone for the treatment of schizophrenia and schizoaffective disorder only, risperidone for schizophrenia and bipolar disorder (and irritability associated with autism), fluphenazine for psychotic disorders in general.<sup>71</sup>

Clozapine is licensed only for treatment resistant or suicidal risk schizophrenia.<sup>71</sup> The off-license use of these medications for psychotic diagnoses is common<sup>72</sup> and may have legal or health economic implications.

On a clinical level, not all aspects of diagnostic instability are negative. Although evidence of diagnostic stability is one of the key criteria for establishing the validity of most first episode psychosis diagnoses,<sup>6</sup> some nosologic categories (eg, schizophreniform disorder or psychosis not otherwise specified) are formulated a priori on expected diagnostic uncertainty at the onset of psychosis or inadequate information available for specific diagnosis. Such diagnostic categories are intended as “place-holders.” Frequent diagnostic shifts in these disorders are to be expected. Interestingly, we found that about one-third of initial cases of schizophreniform disorder or psychosis not otherwise specified retained their initial diagnosis, suggesting some ongoing clinical uncertainty or clinician reluctance to specify a category. To overcome these issues and better understand the clinical relevance of our findings, we reported a high diagnostic stability across schizophrenia spectrum psychoses (0.93), as well as across affective spectrum psychoses (0.84). Changes from schizophrenia spectrum to affective spectrum were infrequent (0.05), and about 0.1 of the initial affective spectrum psychoses shifted towards schizophrenia spectrum psychoses. These findings may be of direct clinical relevance to clinicians who are required to follow the differential NICE guidelines for early schizophrenia spectrum vs affective spectrum psychoses. The concern that initial first-episode diagnosis, if incorrect, may impede clinical care is particularly relevant for changes between schizophrenic and affective spectra and less so within the same spectrum. Differences between an initial diagnosis of major depressive disorder with psychotic features and that of schizophrenia are profound, not only in the pharmacotherapies and specific forms of psychological therapy typically used “but also in the descriptions provided to newly diagnosed individuals and their families as to what lies ahead.”<sup>5</sup> Indeed, recent epidemiological studies in first episode samples have confirmed that schizophrenia spectrum diagnoses have a worse clinical, social and service use course and outcome as compared to affective spectrum diagnoses.<sup>73</sup>

The additional clinically relevant finding of our meta-analysis is of no significant differences across ICD-10 vs DSM-IV definitions of each first episode diagnosis, as revealed by meta-regression analyses. Such a result may well reflect the increasing effort of international diagnostic manuals to improve reliability of psychiatric diagnoses and to harmonize the ICD and DSM.<sup>74</sup> Our results may also be used to inform future evaluations and revisions of the new ICD-11 or DSM-5 diagnostic criteria. For example, given existing concerns that schizoaffective disorder may be a heterogeneous pathology in terms of the longitudinal course,<sup>75</sup> we confirmed a good diagnostic stability (0.72). We also found that about 0.16 initial

cases of ICD-10/DSM-IV schizoaffective disorder would shift towards schizophrenia. This value can be used as reference, to test if the new DSM-5 diagnostic criteria for schizoaffective disorder<sup>76</sup> have actually been successful at improving diagnostic reliability by shifting the concept from episode to life course of the disorder.

We also showed that first episode psychosis diagnoses other than schizophrenia or affective spectrum psychoses had a low diagnostic stability. Diagnostic changes were frequently to schizophrenia: 0.31 of initial psychosis not otherwise specified, 0.29 of initial delusional disorders, 0.21 of initial acute and transient psychotic disorder/brief psychotic disorder, and 0.17 of initial substance-induced psychotic disorder. Because of these changes to schizophrenia, the retrospective diagnostic stability of schizophrenia spectrum disorders was low, suggesting that a significant number of the patients may be misdiagnosed at baseline. Careful monitoring and reassessment of patients presenting with unstable and remitting first episode diagnoses, such as acute and transient psychotic disorder/brief psychotic disorder,<sup>77</sup> seems especially important.

Specific predictors of diagnostic instability need to be determined in order to identify patients who may be misdiagnosed at baseline. We could not identify significant meta-analytical variance in terms of age, gender, ICD-10 vs DSM-IV criteria, baseline GAF levels, duration of follow-up and comorbid substance abuse. We did not restrict first episode samples to a specific age range (eg, 16–35) to follow the new international guidelines that have eliminated young age as eligibility criterion to access early intervention services.<sup>78</sup> The NICE CG 1.3.1.1 recommends that “early intervention services should be accessible to all people with a first episode or first presentation of psychosis, irrespective of the person’s age or the duration of untreated psychosis”. Variability of age across the samples included in the current analysis allowed investigating its impact on meta-analytical outcomes. For example, the median age of our sample was of 27 years, with a few outliers in the lower<sup>58</sup> and upper range.<sup>57</sup> However, the outliers had no impact on the meta-analytical estimates, as shown by the sensitivity analyses (supplementary figure 2a and supplementary figure 2b). Furthermore, no significant change in diagnostic stability was observed when the meta-analysis was repeated in the subset of studies enrolling first episode patients aged 16 (footnotes a and b to table 3). Overall, the median age of our sample is consistent with evidence indicating that prodromal phase typically starts at 21 years and that it may last a few years.<sup>79</sup> Another significant limitation of the current analysis is that we could not assess the impact of duration of untreated psychosis. Therefore the delay from the onset of symptoms to the diagnostic assessment is undetermined. Meta-analyses carry over limitations in the original studies and there were not enough studies reporting on these moderators. Similarly we cannot exclude that other confounders not assessed by our

meta-regressions such as quality of the diagnostic assessment may have a significant impact on the diagnostic stability. However, we did assess the overall methodological quality of the included studies with the NOS<sup>16</sup> and we found no significant effects for most ICD/DSM diagnoses, with the exception of ATPD/BPD. The lack of any effect of comorbid substance use may be due to the fact that different substances may have opposite effects on diagnostic stability. There is evidence for cannabis, but not stimulants, being associated with diagnostic instability.<sup>80</sup> With respect to duration of follow-up, the median follow-up time of the included studies was 2 years, therefore it is probable that most diagnostic changes would have already occurred by this time. Diagnostic re-assessment of first episode cases early in the course of illness seems indicated. The lack of impact of baseline functional level on diagnostic stability supports the recent decision of the DSM-5 Task Force to eliminate the GAF, an inadequate instrument for assessment of psychiatric functional impairment.<sup>81</sup> Conversely, we found greater diagnostic stability when the initial diagnosis was formulated in an inpatient unit as compared to a mixed clinical setting. Specifically, our meta-analysis suggests that diagnostic stability of schizophrenia, affective spectrum psychoses, delusional disorder and acute and transient psychotic disorder/brief psychotic disorder could be significantly improved when the initial diagnosis is made in an inpatient unit. This finding supports an earlier report<sup>1</sup> and suggests that more severe psychopathology and/or more continuous observation maximizes stability of initial diagnosis.

## Conclusions

There is meta-analytical evidence for high prospective diagnostic stability in schizophrenia spectrum psychoses followed by affective spectrum psychoses, with no significant ICD/DSM differences. Diagnostic stability across the other first episode psychotic diagnoses was low and most of diagnostic changes were to schizophrenia. Diagnostic stability is important to patients and caretakers and provides general guidance for clinical decision making. Stability is important for regulatory purposes and development of treatment guidelines. Addressing instability of diagnosis is an important challenge for future diagnostic development of early psychosis.

## Supplementary Material

Supplementary material is available at <http://schizophreniabulletin.oxfordjournals.org>.

## Funding

This study was supported in part by a 2014 NARSAD Young Investigator Award to P.F-P. D.S. was supported

in part funded by the National Institute for Health Research (NIHR) Biomedical Research Centre at South London and Maudsley National Health System (NHS) Foundation Trust and King's College London. The views expressed are those of the author(s) and not necessarily those of the NIHR.

### Acknowledgment

The authors have declared that there are no conflicts of interest in relation to the subject of this study. Open access for this article was funded by King's College London.

### References

- Baca-Garcia E, Perez-Rodriguez M, et al. Diagnostic stability of psychiatric diagnoses in clinical practice. *Brit J Psychiatry*. 2007;190:210–216.
- Insel T. *Transforming Diagnosis*. NIMH [Web]; 2013. <http://www.nimh.nih.gov/about/director/2013/transforming-diagnosis.shtml>. Accessed October 12, 2015.
- Kapur S, Phillips AG, Insel TR. Why has it taken so long for biological psychiatry to develop clinical tests and what to do about it? *Mol Psychiatry*. 2012;17:1174–1179.
- Parnas J. The RDoC program: psychiatry without psyche? *World Psychiatry*. 2014;13:46–47.
- Coryell W. Diagnostic instability: how much is too much? *Am J Psychiatry*. 2011;168:1136–1138.
- Kendell R, Jablensky A. Distinguishing between the validity and utility of psychiatric diagnoses. *Am J Psychiatry*. 2003;160:4–12.
- McGorry PD. Early clinical phenotypes, clinical staging, and strategic biomarker research: building blocks for personalized psychiatry. *Biol Psychiatry*. 2013;74:394–395.
- Insel TR. Rethinking schizophrenia. *Nature*. 2010;468:187–193.
- Jaaskelainen E, Juola P, Hirvonen N, et al. A systematic review and meta-analysis of recovery in schizophrenia. *Schizophr Bull*. 2013;39:1296–1306.
- National Institute of Health and Care Excellence (NICE). Psychosis and schizophrenia in adults: prevention and management. NICE guidelines [CG178]. 2014. <https://www.nice.org.uk/guidance/cg178>. Accessed February 1, 2016.
- Salvatore P, Baldessarini RJ, Tohen M, et al. McLean-Harvard International First-Episode Project: two-year stability of ICD-10 diagnoses in 500 first-episode psychotic disorder patients. *J Clin Psychiatry*. 2011;72:183–193.
- Schwartz JE, Fennig S, Tanenberg-Karant M, et al. Congruence of diagnoses 2 years after a first-admission diagnosis of psychosis. *Arch Gen Psychiatry*. 2000;57:593–600.
- Heslin M, Lomas B, Lappin JM, et al. Diagnostic change 10 years after a first episode of psychosis. *Psychol Med*. 2015;45:2757–2769.
- Stroup DF, Berlin JA, Morton SC, et al. Meta-analysis of observational studies in epidemiology: a proposal for reporting. Meta-analysis Of Observational Studies in Epidemiology (MOOSE) group. *JAMA*. 2000;283:2008–2012.
- Moher D, Liberati A, Tetzlaff J, Altman DG, Group P. Preferred reporting items for systematic reviews and meta-analyses: the PRISMA statement. *BMJ*. 2009;339:b2535.
- Mertz D, Kim TH, Johnstone J, et al. Populations at risk for severe or complicated influenza illness: systematic review and meta-analysis. *BMJ*. 2013;347:f5061.
- Nyaga VN, Arbyn M, Aerts M. Metaprop: a Stata command to perform meta-analysis of binomial data. *Arch Public Health*. 2014;72:39.
- Newcombe RG. Two-sided confidence intervals for the single proportion: comparison of seven methods. *Stat Med*. 1998;17:857–872.
- Freeman MF, Tukey JW. Transformations related to the angular and the square root. *Ann Math Stat*. 1950;21:607–611.
- DerSimonian R, Laird N. Meta-analysis in clinical trials. *Control Clinical Trial*. 1986;7:177–188.
- Harbord R, Higgins J. Metaregression in Stata. *Stat J*. 2008;8:493–519.
- Borenstein M, Hedges L, Higgins J, Rothstein H. *Introduction to Meta-analysis*. Chichester, UK: John Wiley & Sons; 2009:421.
- Lang TA, Secic M. *How to Report Statistics in Medicine: Annotated Guidelines for Authors, Editors and Reviewers*. 2nd ed. Philadelphia, PA: American College of Physicians; 2006.
- Lipsey M, Wilson D. *Practical Meta-analysis*. Thousand Oaks, CA: Sage Publications; 2000.
- Steichen T. Nonparametric “trim and fill” analysis of publication bias in meta-analysis. *Stata Technical Bulletin*. 2000;61:8–14.
- Peters JL, Sutton AJ, Jones DR, Abrams KR, Rushton L. Contour-enhanced meta-analysis funnel plots help distinguish publication bias from other causes of asymmetry. *J Clin Epidemiol*. 2008;61:991–996.
- Sterne JA, Egger M, Smith GD. Systematic reviews in health care: Investigating and dealing with publication and other biases in meta-analysis. *BMJ*. 2001;323:101–105.
- Duval S, Tweedie R. A nonparametric “trim and fill” method of accounting for publication bias in meta-analysis. *J Am Stat Assoc*. 2000;95:89–98.
- Amini H, Alagband-rad J, Omid A, et al. Diagnostic stability in patients with first-episode psychosis. *Australas Psychiatry*. 2005;13:388–392.
- Moller HJ, Jager M, Riedel M, Obermeier M, Strauss A, Bottlender R. The Munich 15-year follow-up study (MUFUSSAD) on first-hospitalized patients with schizophrenic or affective disorders: assessing courses, types and time stability of diagnostic classification. *Eur Psychiatry*. 2011;26:231–243.
- Jager MDM, Hintermayr M, Bottlender R, Strauss A, Moller HJ. Course and outcome of first-admitted patients with acute and transient psychotic disorders (ICD-10:F23). Focus on relapses and social adjustment. *Eur Arch Psychiatr Clin Neurosci*. 2003;253:209–215.
- Okasha A, el Dawla AS, Khalil AH, Saad A. Presentation of acute psychosis in an Egyptian sample: a transcultural comparison. *Compr Psychiatry*. 1993;34:4–9.
- Jorgensen P. Comparative outcome of first-admission patients with delusional beliefs. *Eur Psychiatry*. 1995;10:276–281.
- Jorgensen P, Bennedsen B, Christensen J, Hyllested A. Acute and transient psychotic disorder: a 1-year follow-up study. *Acta Psychiatrica Scandinavica*. 1997;96:150–154.
- Das SK, Malhotra S, Basu D. Family study of acute and transient psychotic disorders: comparison with schizophrenia. *Soc Psychiatry Psychiatr Epidemiol*. 1999;34:328–332.

36. Sajith SG, Chandrasekaran R, Sadanandan Unni KE, Sahai A. Acute polymorphic psychotic disorder: diagnostic stability over 3 years. *Acta Psychiatrica Scandinavica*. 2002;105:104–109.
37. Jarbin H, von Knorring AL. Diagnostic stability in adolescent onset psychotic disorders. *Eur Child Adolesc Psychiatry*. 2003;12:15–22.
38. Correll CU, Lencz T, Smith CW, et al. Prospective study of adolescents with subsyndromal psychosis: characteristics and outcome. *J Child Adolesc Psychopharmacol*. 2005;15:418–433.
39. Rufino AC, Uchida RR, Vilela JA, Marques JM, Zuardi AW, Del-Ben CM. Stability of the diagnosis of first-episode psychosis made in an emergency setting. *Gen Hosp Psychiatry*. 2005;27:189–193.
40. Schimmelmann BG, Conus P, Edwards J, McGorry PD, Lambert M. Diagnostic stability 18 months after treatment initiation for first-episode psychosis. *J Clin Psychiatry*. 2005;66:1239–1246.
41. Suda K, Hayashi N, Hiraga M. Predicting features of later development of schizophrenia among patients with acute and transient psychotic disorder. *Psychiatry Clin Neurosci*. 2005;59:146–150.
42. Whitty P, Clarke M, McTigue O, Browne S, Kamali M, Larkin C, O'Callaghan E. Diagnostic stability four years after a first episode of psychosis. *Psychiatr Serv*. 2005;56:1084–1088.
43. Abe T, Otsuka K, Kato S. Long-term clinical course of patients with acute polymorphic psychotic disorder without symptoms of schizophrenia. *Psychiatry Clin Neurosci*. 2006;60:452–457.
44. Addington J, Chaves A, Addington D. Diagnostic stability over one year in first-episode psychosis. *Schizophr Res*. 2006;86:71–75.
45. Thangadurai P, Gopalakrishnan R, Kurian S, Jacob KS. Diagnostic stability and status of acute and transient psychotic disorders. *Brit J Psychiatry*. 2006;188:293.
46. Boks MP, Selten JP, Leask S, Van den Bosch RJ. The 2-year stability of neurological soft signs after a first episode of non-affective psychosis. *Eur Psychiatry*. 2006;21:288–290.
47. Rahm C, Cullberg J. Diagnostic stability over 3 years in a total group of first-episode psychosis patients. *Nordic J Psychiatry*. 2007;61:189–193.
48. Subramaniam M, Pek E, Verma S, Chan YH, Chong SA. Diagnostic stability 2 years after treatment initiation in the early psychosis intervention programme in Singapore. *Aust NZ J Psychiatry*. 2007;41:495–500.
49. Fraguas D, de Castro MJ, Medina O, et al. Does diagnostic classification of early-onset psychosis change over follow-up? *Child Psychiatry Hum Dev*. 2008;39:137–145.
50. Haahr U, Friis S, Larsen TK, et al. First-episode psychosis: diagnostic stability over one and two years. *Psychopathology*. 2008;41:322–329.
51. Chang WC, Pang SL, Chung DW, Chan SS. Five-year stability of ICD-10 diagnoses among Chinese patients presented with first-episode psychosis in Hong Kong. *Schizophr Res*. 2009;115:351–357.
52. Crebbin K, Mitford E, Paxton R, Turkington D. First-episode drug-induced psychosis: a medium term follow up study reveals a high-risk group. *Soc Psychiatry Psychiatr Epidemiol*. 2009;44:710–715.
53. Pedros A, Marti J, Gutierrez G, Tenias JM, Ruescas S. [Two-year diagnostic stability and prognosis in acute psychotic episodes]. *Actas espanolas de psiquiatria*. 2009;37:245–251.
54. Salem MO, Moselhy HF, Attia H, Yousef S. Psychogenic psychosis revisited: a follow up study. *Int J Health Sci*. 2009;3:45–49.
55. Salvatore P, Baldessarini RJ, Tohen M, et al. McLean-Harvard International First-Episode Project: two-year stability of DSM-IV diagnoses in 500 first-episode psychotic disorder patients. *J Clin Psychiatry*. 2009;70:458–466.
56. Aadamsoo K, Saluveer E, Kuunarpuu H, Vasar V, Maron E. Diagnostic stability over 2 years in patients with acute and transient psychotic disorders. *Nordic J Psychiatry*. 2011;65:381–388.
57. Barak Y, Levy D, Szor H, Aizenberg D. First-onset functional brief psychoses in the elderly. *Can Geriatr J*. 2011;14:30–33.
58. Castro-Fornieles J, Baeza I, de la Serna E, et al. Two-year diagnostic stability in early-onset first-episode psychosis. *J Child Psychol Psychiatry*. 2011;52:1089–1098.
59. Kim JS, Baek JH, Choi JS, Lee D, Kwon JS, Hong KS. Diagnostic stability of first-episode psychosis and predictors of diagnostic shift from non-affective psychosis to bipolar disorder: a retrospective evaluation after recurrence. *Psychiat Res*. 2011;188:29–33.
60. Narayanaswamy JC, Shanmugam VH, Raveendranathan D, Viswanath B, Muralidharan K. Short-term diagnostic stability of acute psychosis: data from a tertiary care psychiatric center in South India. *Indian J Psychol Med*. 2012;34:176–178.
61. Pillmann F, Wustmann T, Marneros A. Acute and transient psychotic disorders versus persistent delusional disorders: a comparative longitudinal study. *Psychiatry Clin Neurosci*. 2012;66:44–52.
62. Kingston T, Scully PJ, Browne DJ, et al. Diagnostic trajectory, interplay and convergence/divergence across all 12 DSM-IV psychotic diagnoses: 6-year follow-up of the Cavan-Monaghan First Episode Psychosis Study (CAMFEPS). *Psychol Med*. 2013;43:2523–2533.
63. Pope MA, Joobar R, Malla AK. Diagnostic stability of first-episode psychotic disorders and persistence of comorbid psychiatric disorders over 1 year. *Can J Psychiatry*. 2013;58:588–594.
64. Castagnini A, Foldager L. Epidemiology, course and outcome of acute polymorphic psychotic disorder: implications for ICD-11. *Psychopathology*. 2014;47:202–206.
65. Kapfhammer HP, Reininghaus EZ, Fitz W, Lange P. Clinical course of illness in women with early onset puerperal psychosis: a 12-year follow-up study. *J Clin Psychiatry*. 2014;75:1096–1104.
66. Queirazza F, Semple DM, Lawrie SM. Transition to schizophrenia in acute and transient psychotic disorders. *Brit J Psychiatry*. 2014;204:299–305.
67. Ranjan S, Shakya R, Shyangwa PM. Diagnostic stability of acute and transient psychotic disorders in patients attending tertiary care hospital. *J Univers Coll Med Sci*. 2015;2:7–10.
68. Spitzer RL, Endicott J, Robins E. Research diagnostic criteria: rationale and reliability. *Arch Gen Psychiatry*. 1978;35:773–782.
69. Koepsell TD, Gill DP, Chen B. Stability of clinical etiologic diagnosis in dementia and mild cognitive impairment: results from a multicenter longitudinal database. *Am J Alzheimers Dis Other Demen*. 2013;28:750–758.
70. Albers L, Straube A, Landgraf MN, Heinen F, von Kries R. High diagnostic stability of confirmed migraine and confirmed tension-type headache according to the ICHD-3 beta in adolescents. *J Headache Pain*. 2014;15:36.

71. Christian R, Saavedra L, Gaynes B, et al. *Future Research Needs for First- and Second-Generation Antipsychotics for Children and Young Adults. Future Research Needs Papers, No. 13*. Rockville, MD: Agency for Healthcare Research and Quality (US); 2012. Report No.: 12-EHC042-EF.
72. Citrome L, Kalsekar I, Guo Z, Laubmeier K, Hebden T. Diagnoses associated with use of atypical antipsychotics in a commercial health plan: a claims database analysis. *Clin Ther*. 2013;35:1867–1875.
73. Morgan C, Lappin J, Heslin M, et al. Reappraising the long-term course and outcome of psychotic disorders: the AESOP-10 study. *Psychol Med*. 2014;44:2713–2726.
74. First MB. Harmonisation of ICD-11 and DSM-V: opportunities and challenges. *Brit J Psychiatry*. 2009;195:382–390.
75. Durla A, Lenciu M, Bredicean C, Papava I, Cristanovici M. Stability and change in the clinical course of schizoaffective disorder. *Revista medico-chirurgicala a Societatii de Medici si Naturalisti din Iasi*. 2013;117:11–15.
76. Malaspina D, Owen MJ, Heckers S, et al. Schizoaffective Disorder in the DSM-5. *Schizophr Res*. 2013;150:21–25.
77. Fusar-Poli P, Cappucciati M, Bonoldi I, et al. Prognosis of brief psychotic episodes: a meta-analysis. *JAMA Psychiatry*. 2016;73:211–220.
78. National Health Service. *Achieving Better Access to Mental Health Services by 2020*. London, England: Department of Health; 2014. <https://www.gov.uk/government/publications/mental-health-services-achieving-better-access-by-2020>. Accessed February 1, 2016.
79. Fusar-Poli P, Cappucciati M, Borgwardt S, et al. Heterogeneity of risk for psychosis within subjects at clinical high risk: meta-analytical stratification *JAMA Psychiatry*. 2016;73:113–120.
80. Sara GE, Burgess PM, Malhi GS, Whiteford HA, Hall WC. The impact of cannabis and stimulant disorders on diagnostic stability in psychosis. *J Clin Psychiatry*. 2014;75:349–356.
81. Gold LH. DSM-5 and the assessment of functioning: the World Health Organization Disability Assessment Schedule 2.0 (WHODAS 2.0). *J Am Acad Psychiatry*. 2014;42:173–181.