

Title page

Title: Lithium modulates striatal reward anticipation and prediction error coding
in healthy volunteers

Authors: Inge Volman, PhD^{1,2,3}, Abbie Pringle, DPhil², Lennart Verhagen, PhD^{3,4,5},
Michael Browning, MB.BS^{1,2,3}, Phil J Cowen, F.R.C.Psych², Catherine J Harmer,
DPhil^{1,2,3},

Affiliations: 1. Oxford Health NHS foundation Trust, Warneford Hospital; 2.
Department of Psychiatry, University of Oxford; 3. Wellcome Centre for
Integrative Neuroimaging Neuroimaging (WIN), Centre for Functional MRI of the
Brain (FMRIB), Nuffield Department of Clinical Neurosciences, John Radcliffe
Hospital, University of Oxford; 4. Wellcome Centre for Integrative Neuroimaging
(WIN), Department of Experimental Psychology, University of Oxford; 5. Donders
Institute for Brain, Cognition and Behaviour, Radboud University Nijmegen

Corresponding author:

Inge Volman, Warneford hospital, Warneford lane, Oxford OX3 7JX, United
Kingdom

Telephone: (+44) (0)1865 618200

Email: volman.inge@gmail.com

Abstract

Lithium is one of the most effective mood stabilizing medications in bipolar disorder. This study was designed to test whether lithium administration may stabilize mood via effects on reward processing. It was hypothesized that lithium administration would modulate reward processing in the striatum and affect both anticipation and outcome computations. Thirty-seven healthy human participants (18 males, 33 with suitable fMRI data) received 11 (+/- 1) days of lithium carbonate or placebo intervention (double-blind), after which they completed the Monetary Incentive Delay task while fMRI data were collected. The Monetary Incentive Delay task is a robust task with excellent test-retest reliability and is well suited to investigate different phases of reward processing within the caudate and nucleus accumbens. To test for correlations with prediction error signals a Rescorla-Wagner reinforcement-learning model was applied. Lithium administration enhanced activity in the caudate during reward anticipation compared to placebo. In contrast, lithium administration reduced caudate and nucleus accumbens activity during reward outcome. This latter effect seems related to learning as reward prediction errors showed a positive correlation with caudate and nucleus accumbens activity during placebo, which was absent after lithium administration. Lithium differentially modulates the anticipation relative to the learning of rewards. This suggests that lithium might reverse dampened reward anticipation while reducing overactive reward updating in patients with bipolar disorder. This specific effect of lithium suggests that a targeted modulation of reward learning may be a viable approach for novel interventions in bipolar disorder.

Main text of article

Introduction

Lithium is one of the most effective mood stabilizers for maintenance and treatment of bipolar disorder [1]. Clinical data support a role both as an antidepressant and in reducing the occurrence of manic episodes. Despite lithium having a long history in the treatment of psychiatric disorders, its mechanisms of action are poorly understood. Leading neurochemical theories of the mechanism of lithium include effects on inositol signaling and inhibition of GSK-3 β but also support an involvement of the monoamine and glutamate systems [2]. However, it remains unclear how these biochemical effects translate into lithium's mood stabilizing action. Understanding the profile of lithium on core psychological processes relevant to bipolar disorder has the potential to enhance our search for candidate mood stabilizers by providing a surrogate marker for treatment action. One candidate process with obvious relevance to the experience of both depression and mania, relates to how rewards are processed. [The behavioural approach system model of bipolar disorder argues that hypersensitivity in reward processing and incentive motivation plays an important role in the pathophysiology of bipolar disorder particularly during mania \(see \[3,4\]\).](#) In line with this model, increased self-report reward sensitivity is associated with onset, severity and recurrence of hypomanic/manic episodes [3]. At a neurobiological level, however, the results have been more mixed and may depend on clinical state, medication usage and reward paradigm. In addition, differences in reward seeking and impulsivity at a behavioural level have been more broadly related to both increases and decreases in neural reward circuitry response in fMRI studies [5]. These differences are often conceptualised as excessive reward seeking either representing increased reward reinforcement or

conversely an attempt to compensate for reduced experience of everyday reward (Hommer et al).

The response to reward can be broadly split into an anticipatory and consummatory phase. Both reward anticipation and consummation (i.e. with positive outcome) have been reliably linked to brain activation of the caudate nucleus and nucleus accumbens (NAcc) [6]. Dopamine dependent signaling within these areas is believed to code reward prediction error (RPE) signals [7,8]. Thus, initially a dopamine response is seen during reward receipt but this transfers to anticipation once reward associations are learnt. A reward that is greater than expected then leads to a positive RPE, while lower reward leads to negative RPEs (i.e. a dip in dopamine signaling). These RPEs are crucial for updating expectation on rewards in the future, and thus may play a critical role during episodes of mood disturbance and stabilization.

Depression and more specifically anhedonia have been reliably associated with reduced striatal responses during the anticipation of reward [9,10]. In bipolar disorder mixed results on ventral striatum activity during reward processing have been reported [3,11–16]. These differences may be explained partly by characteristics of the sample, including clinical state, since mood elevation may be expected to lead to a different profile to depression. In addition, the majority of studies in bipolar disorder have included patients taking mood-stabilizing medication, which may have affected the pattern of results [17]. Critically, Yip et al., reported that unmedicated patients with bipolar disorder showed blunted sensitivity of the caudate nucleus during anticipation of reward [16]. Such observations contrast with those in medicated patients [12,15] and suggests a potential effect of medication to enhance reward sensitivity during anticipation. Furthermore, unmedicated young men at increased risk for bipolar disorder showed reduced subjective psychostimulant response to acute ethanol administration [18], consistent with a reward seeking as compensation hypothesis. These observations suggest that it is critical to consider the effects of mood stabilising

medication on reward processing to disambiguate the pathophysiology of bipolar disorder from potential treatment action.

The current study was designed to address how reward responding might be modified through lithium administration thus addressing part of the translational gap between the well-characterised molecular effects of lithium and its clinical efficacy. More specifically, healthy participants completed a well-validated reward-processing task, the monetary incentive delay (MID) task [19], within a double-blind randomized-controlled between-subject design. The MID task elicits reward anticipation, reward outcome processing as well as RPEs that are informative to characterise the value of upcoming rewards. Healthy volunteer studies are a useful way of characterizing direct effects of drug treatments unconfounded by unstable clinical state or other medication use. On the assumption that lithium reverses deficits in reward anticipation in unmedicated bipolar disorder [16], we predicted that caudate-related anticipation effects in healthy participants would be enhanced during lithium administration. Conversely, we predicted that responses during the outcome phase, as well as PE signaling, would be reduced by lithium administration in line with its mood stabilizing properties.

Materials and Methods

Participants

37 right-handed participants (18 males) were recruited from the general population, written and oral consent was obtained according to the guidelines of the local ethics committee (NRES committee South Central – Oxford REC B). Participant recruitment occurred through posters, web ads, ads in local newspapers and a local participant pool. The participants were reimbursed for their time. The participants were 18-55 years old and physically fit (physical examination by a medical doctor) with normal laboratory values for thyroid and renal function, and had a BMI of 19-30. Females additionally

scored negative on a pregnancy test and used two forms of effective contraception. Exclusion criteria were: taking psychotropic medication, any past or current Axis 1 psychiatric disorder on DSM-IV (as assessed by structured interview for DSM-IV), current pregnancy or breastfeeding, current or past history of drug or alcohol dependency, participation in the last 3 months in a medication research study, smoking >5 cigarettes per day, dyslexia and any contra-indication to MR scanning. Participant drop-out/exclusions during the experiment/analyses occurred due to not starting intervention (1x), an unexpected adverse effect (1x), incomplete MRI session (1x) and excessive movement during fMRI (1x; >6mm, 2x voxel size). This resulted in 33 participants for the reported results (table S1).

Study design and intervention

The study was a double blind randomized design with both experimenter and participant blind to the intervention. Randomization was performed by a qualified researcher not involved in the study. The randomization programme included a minimization algorithm to ensure balanced allocation of participants across groups, stratified by gender, using a block design of 4. Allocation ratio was 1:1 for treatment (lithium vs placebo) and 1:1 for gender (male, female). The sequence was concealed from the experimenter until completion of the study. Participants came into the lab (Psychiatry/ OCMR, Oxford) four times, namely for an initial assessment, at the start of the intervention and two days at the end of the intervention.

At initial assessment a medical and psychiatric screening was performed (including SCID-IV), and blood levels were taken measuring thyroid stimulating hormone and creatinine. At treatment start, several questionnaires were completed assessing mood, anxiety and personality characteristics (see questionnaire measures) and females took a pregnancy test. Participants were given blinded bottles of capsules to take home as well as questionnaires to complete daily (not included here). Participants

were contacted at day 3 and 5 to check for adverse side effects and to ensure they followed the dosage regimen.

Participants received lithium carbonate (as 'Priadel' prolonged release tablets) or placebo intervention for 11 (+/- 1) days to take at night. The lithium carbonate dose was encapsulated and increased in a gradual fashion with day 1: 400mg, day 2: 600 mg, day 3-11: 800 mg (based on [20,21]). The placebo intervention was 200mg Rayotabs placed in identical capsules.

At the end of the treatment period the participants completed a morning behavioral and MR session (on separate days, non-fixed order). During the behavioral session, blood was drawn for lithium levels, participants completed a battery of tasks (not included here) and the questionnaires described below. During the MR test session, the participants underwent an anatomical scan, fMRI while completing the MID task, a visual checkerboard task, an emotional reappraisal task (not included here) and a MR spectroscopy scan (not included here).

Questionnaire measures

At baseline and follow-up the following questionnaires were assessed: the Beck Depression Inventory [22], the state-trait anxiety inventory [23] (only STAI-state at follow-up), the Mood Disorder Questionnaire [24] and the Emotional Blunting questionnaire (part 1 only)[25]. Additionally only at baseline the National Adult Reading test (NART IQ scale [26]) and the Eysenck Personality Questionnaire [27] were completed. For each treatment day participants completed the Befindlichkeit scale of mood and energy [28], the positive and negative affective scale [29], the Bond and Lader visual analogue scales [30] and a side effects questionnaire.

Monetary incentive delay task

The MID task [19], programmed in E-Prime, contained 54 trials, with 18 trials per condition and an additional 12 practice trials outside the scanner. At each trial (figure 1) participants saw a cue, waited a variable interval while viewing a cross-hair, then made a response when seeing a white square (target). Outcome was given indicating response correctness (i.e. within time limit), if a reward was obtained and current task winnings. Initially, target duration was set by the practice. Then, target duration was reduced by 20ms if the previous trial was correct and overall accuracy > 66%. 20ms was added if the previous trial was incorrect and overall accuracy < 66%. The range of the target duration was restricted between 160-260ms. Different cues reflected the different conditions of the task: 1) circle: reward could be obtained when responding within time limit (reward anticipation condition), 2) square: participants were asked to respond but could not obtain a reward (no reward anticipation condition), and 3) triangle: do not make a response condition. If a response before target was made (early response), a fixation cross was presented for the remaining part of the trial. fMRI volume acquisitions were time-locked to cue offset [19]. Please see the supplementary materials for analysis of behaviour.

Checkerboard control task

To control for possible confounding effects of treatment on general brain activation, a visual checkerboard task was used. Participants viewed blocks of alternating checkerboards (black and white squares switching at a frequency of 8Hz) for 16s or stationary fixation cross for 15s. In total, participants viewed 10 blocks of each, while instructed to lie quietly with their eyes open [31].

fMRI acquisition

The fMRI volumes were acquired on a 3T MRI scanner (Magnetom, Siemens Medical Systems) with a 32 channel head coil using a sequence from [32], (repetition time (TR) =

3000ms, echo time (TE) = 30ms, 45 slices (no gap), a slice angle of 15°, interleaved acquisition, voxel size = 3x3x3mm, flip angle = 87°, field of view (FOV) = 192mm, with local z-shimming). Field maps were obtained using a dual echo 2D gradient echo sequence (TR = 488 ms, TE = 7.65 ms and 5.19 ms, grid = 64 × 64 × 40). High-resolution anatomical images were acquired (TR = 2040ms, TE = 4.7ms, 192 transversal slices, voxel size = 1x1x1mm, FOV = 192mm).

Computational model of reward prediction errors

The reward prediction error for each reward trial was estimated to use as parametric modulation on brain activation [7]. A Rescorla-Wagner algorithm based reinforcement learning model was used to generate estimates of reward prediction error (RPE) and expected value (EV) from reward trials [33,34]. EV reflects the estimated probability of receiving a reward on a given trial. RPE reflects the difference between this expectation and the actual reward.

$$EV_1 = 0.5$$

$$RPE_t = R_t - EV_t$$

$$EV_{t+1} = EV_t + \eta \times RPE_t$$

R is the actual reward received, t is the trial, η is the learning rate. RPE_t is determined by the difference between the received reward and EV (the expected value). The EV for the next trial (EV_{t+1}) is updated based on the EV of the current trial (EV_t) and the prediction error of that trial (RPE_t) times the learning rate (η). EV was initialized at 0.5 and η was fixed at 0.7 [7]. Varying the value used for the learning rate did not significantly influence the prediction error regressors generated from this procedure ([33]; see supplemental results).

Functional MRI data analysis

fMRI volumes were analyzed using FSL FEAT ([37, 44, 45]; version: FinalFive). First, bias correction and brain extraction was performed on the anatomical and functional volumes and, if present, the magnitude volume [36,37]. The magnitude volume was eroded one voxel to exclude any skull. A fieldmap volume was estimated based on the gradient-echo magnitude and phase volumes. The functional timeseries were high passed filtered at 100s, motion and fieldmap distortion corrected [38], spatially smoothed with 5mm FWHM, and Melodic ICA data exploration [39] was performed. Registration of the functional to T1 volume was done using linear boundary-based registration and then to a standard T1 MNI brain (isometric voxel size: 2mm) using linear transformation with 12 degrees of freedom and nonlinear warp with 10mm resolution [38,40,41]. The melodic components were manually checked for noise and when identified removed from the timeseries [39].

A first level model for reward anticipation and outcome per participant was modeled with a double-gamma HRF and its temporal derivatives on the onset times of the anticipation and outcome cues. FILM pre-whitening and temporal filtering was applied. Three different types of anticipation cues were modeled, signaling a potential reward, no reward or no movement. Five different types of outcome were modeled, namely indicating a win or miss on reward trial, a win or miss on no reward trial or a no movement trial in which a movement was correctly withheld. Error outcome was modeled when a participant responded too early or responded while instructed not to (i.e. on no response trials). Additional confound regressors were included capturing the white matter time series and motion. The white matter mask for the time series was created using the HCP pipeline with Freesurfer ([42], <http://surfer.nmr.mgh.harvard.edu/>). The white matter mask was warped to functional space, eroded one voxel to exclude partial-voluming effects and restricted to the largest

cluster of voxels. The denoised functional data were used within this white matter mask to obtain the white matter timeseries. To account for residual signal related to head movement, the six movement parameters from the motion correction were included as regressors of no interest as well as regressors capturing volumes with excessive motion (applied for participants with >1mm mean movement displacement and artifacts in slices as observed by visual inspection). Motion outliers were identified using the FSL Motion Outliers tool.

Two contrasts were calculated. 1) Reward anticipation was modeled by comparing brain activity during the anticipation phase of reward trials to no reward trials. 2) Reward outcome was modeled on the outcome phase when participants were informed of a win versus a miss on reward trials.

A second first level model including the prediction error was created similarly to the model above with a few critical differences. First, the reward expectation and prediction error regressors from the computational model were added as a parametric regressor modeled at the onset of reward anticipation or outcome, respectively. Second, outcome regressors were modeled per cue option, without taking specific feedback into account to avoid overfitting [7]. A single contrast was calculated for this analysis that represented the prediction error.

For the visual checkerboard control task, a first level model was created following the same procedure with FSL FEAT [43,44] modeling the double-gamma HRF and its temporal derivatives on the onset times of the checkerboard and fixation blocks. One contrast was calculated, namely when brain activity is larger for checkerboard blocks compared to fixation blocks.

The contrasts were separately fed into a two-sample t-test within randomise, FSL's tool for non-parametric permutation inference (5000 permutations; [45]), to assess general effects of task relevant contrasts on both groups, as well as test for group differences. Statistics were assessed using threshold free cluster enhancement (TFCE;

[46]) method with family-wise error (FWE) correction of 0.05 (or 0.95 threshold within randomise). Cohen's d was estimated following [47]. The Caudate/ NAcc mask used for the ROI analyses and grey matter mask used for the whole brain analyses were created using the HCP pipeline with Freesurfer ([42], <http://surfer.nmr.mgh.harvard.edu/>). First, for each participant the T1-weighted structural image was processed following the HCP pipeline. Second, these segmented images were warped to standard space where the regions of interest were isolated and a summary mask was calculated over all participants.

Significant brain areas were extracted for visualization using the `fslmaths` and `cluster` tool, with a threshold of 0.95 (based on $1/p$ thresholding from randomise). [48] and [49] were used for localisation. We visualised BOLD time-courses underlying the significant interactions between reward processing and intervention, using BOLD signal extracted from ROIs per participant [50]. ROIs with 5mm radius restricted to the Caudate/Nacc ROI were centered on the peak coordinates of the group differences. Extracted timeseries were up-sampled using b-spline fitting and signal covarying with the original confound regressors was removed. To obtain the RPE associated time-course a GLM model was created including a constant (or mean activation) and the RPE values as parametric modulation. The standardized beta of the RPE parametric modulation reflects the correlation strength of RPE with the time-course. The time-courses are averaged over trials and subjects for visualization.

Results

There were no significant differences in the demographic characteristics of the two groups before the intervention, nor on measured subjective state or brain volume as a result of the intervention (table S1).

fMRI results

Anticipation phase

There was a significant main effect and a group difference in the left and right caudate when comparing trials in which participants anticipated a reward versus trials in which they did not anticipate a reward (table 1). As hypothesized, the group difference was driven by increased activity in the lithium group during reward anticipation compared to no reward anticipation (Figure 2, MNI coordinates (x, y, z): 16, 16, 10; cluster size = 583, z-score = 4.88), while no significant difference was observed in the placebo group.

Outcome phase

A significant main effect was observed in several regions including the medial prefrontal cortex (mPFC), left and right caudate (table 1) during outcome on reward trials comparing wins versus losses. A group difference in the opposite direction as above was seen in the caudate during the outcome contrast (table 1, Figure 2). This effect was driven by increased activity in the placebo group for a win compared to a loss in rewarding trials (MNI coordinates (x, y, z): -8, 19, 0; cluster size = 652, z-score = 4.97)

Reward prediction error

The RPE was regressed against the individual brain data (parametric modulation) to test if lithium intake changed the strength of RPE modulation on striatal activity. There was a significant group difference in the left and right caudate and NAcc, which was driven by a relatively higher positive correlation between RPE and caudate/ NAcc

activity in the placebo group [relative to the lithium group](#) (table 2, Figure 3).

Table 1: MID results

Anatomical region	BA	Side	x y, z - MNI	K	z-score	Cohen's d
<i>ROI on Caudate/ NAcc</i>						
<i>Anticipation: Reward>No Reward, Lithium > Placebo</i>						
Caudate head		R	12, 2, 12	23	4.21	1.72
Caudate body		L	-18, 2, 20	19	3.81	1.51
Caudate head		L	-6, 14, 0	1	3.79	1.50
<i>Anticipation: Lithium group: Reward>No Reward</i>						
Caudate & NAcc		L & R	16, 16, 10	583	4.88	2.11
<i>Anticipation: over both groups: Reward>No Reward</i>						
Caudate head		R	16, 6, 16	153	4.36	1.80
NAcc/ caudate (head)		L	-4, 10, -6	67	4.17	1.70
<i>Outcome on reward trials: Win > Loss, Placebo > Lithium</i>						
Caudate head		R	16, 20, 4	9	3.19	1.22
Caudate head		R	18, 20, 14	7	3.36	1.30
Caudate head		R	12, 16, 4	6	3.21	
<i>Outcome on reward trials: Placebo group: Win > Loss</i>						
Caudate/ NAcc		L & R	-8, 18, 0	652	4.97	1.23
NAcc		R	14, 22, -	8	3.18	1.22
10						
<i>Outcome on reward trials: Over both groups: Win > Loss</i>						
NAcc/ Caudate (head)		L & R	6, 12, -4	356	4.79	2.05
<i>Whole brain effects</i>						
<i>Outcome on reward trials: Over both groups: Win > Loss</i>						

mPFC: Dorsal ACC/ frontal pole	32d, 10m	L & R	-2, 50, 12	487	5.75	2.71
Retrosplenial cortex	29, 30	L & R	-6, -52, 12	399	5.47	2.50
NAcc/ Caudate		L & R	6, 12, -4	135	4.79	2.05
PCC	23	L	-6, -38, 36	131	4.33	1.79
Precuneus	7/ 31	L	-2, -64, 36	42	4.76	2.03
PCC	23	R	4, -36, 46	11	3.87	1.54

Note: BA = Brodmann Area; k = number of voxels in a cluster; ACC = anterior cingulate cortex; PCC = posterior cingulate cortex. See table S5 for subthreshold effects.

Table 2: Reward prediction error

Anatomical region	BA	Side	x y, z - MNI coordinates	K	z-score	Cohen's d
<i>ROI on Caudate/ NAcc</i>						
<i>Placebo > Lithium</i>						
Caudate/ NAcc		R	12, 16, 4	124	3.63	1.43
Caudate head/ NAcc		L	-12, 18, 6	15	2.95	1.11
<i>Placebo group</i>						
Caudate head/ NAcc		R & L	-10, 4, 2	433	4.12	1.67
<i>Whole brain effects</i>						
<i>Over both groups</i>						
Retrosplenial/ PCC	30/ 31	L	-8, -62, 20	166	6.25	3.12
Precuneus	7/ 31	L	-8, -68, 30	13	4.36	1.80

Note: BA = Brodmann Area; k = number of voxels in a cluster; PCC = posterior cingulate cortex

Visual checkerboard control task

No group differences were found for the visual checkerboard task, suggesting that the observed effects during the MID task do not reflect general blood oxygen level-dependent (BOLD) changes. There was an overall highly significant effect of visual stimulation in the visual cortex (see table S2), as previously reported [51]. The main effect in visual cortex was also present in the individual groups with exactly the same coordinates (MNI: x=12, y=-86, z=-12; placebo group: z-score = 17.3, cluster size = 19430; lithium group: z-score = 16.6, cluster size = 23585).

Discussion

This study tested the effects of lithium administration on reward processing in healthy participants. We found that lithium enhances striatal reward anticipation, while it dampens striatal reward outcome and associated prediction error signals. This provides a potential mechanism by which lithium treatment might stabilize reward responsivity in bipolar disorder.

The MID task has been extensively used to measure different phases of reward processing. Reward anticipation is triggered by cues on the prospect of receiving a reward. During the reward outcome phase participants are informed on whether they have received that reward. The reward outcome phase is relevant to learning about potential future rewards and salience of the rewarding cue. Knutson and colleagues showed a clear involvement of the caudate and NAcc during reward anticipation as well as outcome, an effect confirmed by multiple meta-analyses [6,19,52,53]. Increased activation in striatal regions during reward outcome has typically been related to unexpected reward, so called reward prediction errors [6]. Here we model each of these effects, looking at the effect of lithium administration on reward anticipation, outcome and prediction errors.

Depression has been associated with reduced activity of caudate and NAcc during anticipation of reward [52]. Similarly, unmedicated euthymic patients with bipolar disorder showed blunted sensitivity of the caudate nucleus during anticipation of reward [16]. Results in medicated patients have been mixed, with studies often showing increased activity within the ventral striatum [3,11–14]. The current investigation illustrates what might underlie this discrepancy since lithium administration itself increases activity of the caudate during reward anticipation, suggesting it increases sensitivity for potential reward. Critically, this anticipatory effect within the caudate showed no relation with the height of the trial-dependent EV value from the prediction error model which reflects sensitivity for the amount of reward (see supplementary material). This suggests that it was not a greater sensitivity to the value of reward that drove lithium-related increases in striatal anticipation, but the expectation of any potential reward.

In contrast to the effects of lithium on reward anticipation, we found reduced caudate and NAcc responses during the receipt of reward and reduced RPE-signals following lithium administration. Indeed, the volunteers taking lithium were relatively insensitive during the outcome phase as to whether they received a win or a loss. It seems that the striatal drive to reinforce rewards is reduced as a function of lithium administration, thereby providing a potentially important distinction between the ability to maintain anticipation and motivation towards reward but perhaps, preventing escalation or reinforcement while engaging in potentially pleasurable but risky behaviours.

The theoretical account provided by the behavioural approach system model [4] suggests that bipolar disorder is characterized by excessive reward seeking and incentive motivation, underpinned by increased reactivity of the fronto-striatal system to reward [3]. The current findings suggest that examining the neural basis of reward seeking in bipolar disorder requires a focus on unmedicated patients since mood

stabilizing medication can have key effects on reward response. Furthermore, differences between the effects of lithium on reward anticipation and receipt suggest a more complex pattern of action which requires further investigation.

The current pattern of results appears at least partly distinct from previous studies exploring the effects of antidepressant medication on the response of the nucleus accumbens and reward prediction errors in the monetary incentive delay task. In particular, Scholl et al [50] and Graf [54] reported an increase in RPE signals following SSRI administration, though nucleus accumbens response to reward (erotic images) was reduced in the latter study. McCabe et al [55] also reported decreased ventral striatal responses to chocolate reward after administration of the SSRI citalopram. Studies exploring the effects of the noradrenaline and dopamine reuptake inhibitor bupropion have also tended to report increased nucleus accumbens responses during reward anticipation [56] and a similar pattern was seen with low dose amisulpride in the same task but extending to both anticipation and outcome phases [57]. Further work is needed to characterize these effects, both between antidepressants with different pharmacological properties and between agents with mood stabilizing actions.

The current study has implications for reward studies involving medicated bipolar patients as it shows that lithium administration can significantly influence the pattern of results. It also provides a candidate marker for exploring the effects of putative mood stabilizing agents in drug development pipelines. The identification of novel treatments in bipolar disorder has been slow and with a high failure rate. Use of a mechanistic biomarker as a way of screening and characterizing novel treatments can double the success of drug development programmes across medicine [58]. Further validation of the effects of mood stabilisers in bipolar disorder using tasks, which separate reward anticipation and outcome, is therefore urgently needed.

Other fMRI studies have been performed testing for lithium effects in healthy

participants (e.g. [59]), using a variety of paradigms, though not reward. Attention has mostly focused on changes in structural measures including grey and white matter volumes, finding differential effects after several weeks of lithium administration [20,60–62]. Crucially, we found no differences in grey or white matter volume (table S1). This might be related to the length of the treatment, i.e. 11 days versus 4 weeks, as rodent work has shown increased frontal cortex volume after 5 weeks but not after 11 days of lithium treatment [63].

Further work in this area may wish to include tasks with differential magnitudes of reward and punishment conditions to characterize the effects of lithium further. *As our task did not include a punishment condition, it is not possible to draw a conclusion with respect to the specificity of effect on reward vs punishment anticipation and receipt.* Our sample size was relatively small, with a final sample of 33. However, the MID task is a very robust task with good reliability [53,64,65]. Indeed, previous studies suggest significant power for individual difference effects (13 participants needed for power of .80 [64]) and our results have large effect sizes (table 1-2). The coherence of our findings, despite the smaller sample size, is amplified by the close match between the pattern of activity observed in this study compared to a recent meta-analysis [6]. Future studies could investigate potentially altered connectivity between prefrontal and striatal brain regions which might underlie the observed effect [66]. We did not include a measure of impulsivity in our study which may have been a useful way of understanding the effects of lithium on different reward components characterized here. Post-hoc correlation analyses with lithium levels, depression, anxiety and mood instability questionnaires indicate potential correlations with the prediction error signal (tables S7-10), which might be relevant for future meta-analyses but are difficult to interpret in this relatively small sample size. Finally, lithium has been associated with general changes in MRI signalling [67], however our checkerboard control task shows this was not the case with 11 days administration in a healthy control sample.

To conclude, our study shows a potential mechanism by which lithium stabilizes reward processing in bipolar patients. Lithium administration in healthy participants increased striatal responsivity to reward anticipation, while striatal prediction error signals and outcome-related activity were reduced, thereby shifting neural processing from outcome to anticipation. This shifted balance in reward processing might increase initial sensitivity to reward, while it reduces overresponding to positive reinforcement, both key neuropsychological processes in the pathophysiology of bipolar disorder.

Acknowledgments

We would like to thank Dr. Liliana Captao for her assistance.

Funding and Disclosure

We are grateful to the John Fell Fund for research funding. This research was supported by the NIHR Oxford Health Biomedical Research Centre. The views expressed are those of the authors and not necessarily those of the NHS, the NIHR or the Department of Health. Prof. Dr. Harmer has received consultancy fees from P1vital, Lundbeck, Sage Therapeutics and Johnson and Johnson. Dr. Browning is supported by a MRC Clinician Scientist Fellowship (MR/N008103/1), has received travel expenses from Lundbeck for attending a conference and has acted as a consultant for J&J and CHDR. Prof. Dr. Cowen was supported by an MRC grant MR/S003037/1. LV was supported by a Wellcome Trust Senior Investigator Award (WT100973AIA) awarded to Matthew Rushworth, and the Wellcome Centre for Integrative Neuroimaging (203139/Z/16/Z). Dr. Volman, Dr. Pringle, Dr. Verhagen and Prof. Dr. Cowen declare no potential conflicts of interest.

Author Contributions

- Substantial contributions to the conception or design of the work; or the acquisition, analysis, or interpretation of data for the work: IV, AP, LV, MB, PC, CH

- Drafting the work or revising it critically for important intellectual content: IV, AP, LV, MB, PC, CH
- Final approval of the version to be published: IV, AP, LV, MB, PC, CH
- Agreement to be accountable for all aspects of the work in ensuring that questions related to the accuracy or integrity of any part of the work are appropriately investigated and resolved: IV, CH

Supplementary Information accompanies this paper at
(<https://doi.org/10.1038/s41423-018-0033-z>)

References

1. Kessing LV, Bauer M, Nolen WA, Severus E, Goodwin GM, Geddes J. Effectiveness of maintenance therapy of lithium vs other mood stabilizers in monotherapy and in combinations: a systematic review of evidence from observational studies. *Bipolar Disord*. 2018;20:419–431.
2. Malhi GS, Tanious M, Das P, Coulston CM, Berk M. Potential Mechanisms of Action of Lithium in Bipolar Disorder. *CNS Drugs*. 2013;27:135–153.
3. Nusslock R, Young CB, Damme KSF. Elevated reward-related neural activation as a unique biological marker of bipolar disorder: Assessment and treatment implications. *Behav Res Ther*. 2014;62:74–87.
4. Alloy LB, Abramson LY. The role of the behavioral approach system (BAS) in bipolar spectrum disorders. *Curr Dir Psychol Sci*. 2010. 2010. <https://doi.org/10.1177/0963721410370292>.
5. Hommer DW, Bjork JM, Gilman JM. Imaging brain response to reward in addictive disorders. *Ann N Y Acad Sci*. 2011. 2011. <https://doi.org/10.1111/j.1749-6632.2010.05898.x>.
6. Oldham S, Murawski C, Fornito A, Youssef G, Yücel M, Lorenzetti V. The anticipation and outcome phases of reward and loss processing: A neuroimaging meta-analysis of the monetary incentive delay task. *Hum Brain Mapp*. 2018:1–21.
7. Cao Z, Bennett M, Orr C, Icke I, Banaschewski T, Barker GJ, et al. Mapping adolescent reward anticipation, receipt, and prediction error during the monetary incentive delay task. *Hum Brain Mapp*. 2019;40:262–283.
8. Schultz W. Behavioral dopamine signals. *Trends Neurosci*. 2007;30:203–210.
9. Stringaris A, Belil PVR, Artiges E, Lemaitre H, Gollier-Briant F, Wolke S, et al. The brain s response to reward anticipation and depression in adolescence: Dimensionality, specificity, and longitudinal predictions in a community-based sample. *Am J Psychiatry*. 2015. 2015.

<https://doi.org/10.1176/appi.ajp.2015.14101298>.

10. Ng TH, Alloy LB, Smith D V. Meta-analysis of reward processing in major depressive disorder reveals distinct abnormalities within the reward circuit. *Transl Psychiatry*. 2019. 2019. <https://doi.org/10.1038/s41398-019-0644-x>.
11. Berghorst LH, Kumar P, Greve DN, Deckersbach T, Ongur D, Dutra SJ, et al. Stress and reward processing in bipolar disorder: a functional magnetic resonance imaging study. *Bipolar Disord*. 2016;18:602–611.
12. Nusslock R, Almeida JRC, Forbes EE, Versace A, Frank E, Labarbara EJ, et al. Waiting to win: Elevated striatal and orbitofrontal cortical activity during reward anticipation in euthymic bipolar disorder adults. *Bipolar Disord*. 2012;14.
13. Mason L, O’Sullivan N, Montaldi D, Bentall RP, El-Deredy W. Decision-making and trait impulsivity in bipolar disorder are associated with reduced prefrontal regulation of striatal reward valuation. *Brain*. 2014;137:2346–2355.
14. Abler B, Greenhouse I, Ongur D, Walter H, Heckers S. Abnormal reward system activation in mania. *Neuropsychopharmacology*. 2008;33:2217–2227.
15. Caseras X, Lawrence NS, Murphy K, Wise RG, Phillips ML. Ventral striatum activity in response to reward: Differences between bipolar I and II disorders. *Am J Psychiatry*. 2013;170:533–541.
16. Yip SW, Worhunsky PD, Rogers RD, Goodwin GM. Hypoactivation of the ventral and dorsal striatum during reward and loss anticipation in antipsychotic and mood stabilizer-naive bipolar disorder. *Neuropsychopharmacology*. 2015;40:658–666.
17. Hafeman DM, Chang KD, Garrett AS, Sanders EM, Phillips ML. Effects of medication on neuroimaging findings in bipolar disorder: an updated review. *Bipolar Disord*. 2012;14:375–410.
18. Yip SW, Doherty J, Wakeley J, Saunders K, Tzagarakis C, De Wit H, et al. Reduced subjective response to acute ethanol administration among young men with a

- broad bipolar phenotype. *Neuropsychopharmacology*. 2012. 2012.
<https://doi.org/10.1038/npp.2012.45>.
19. Knutson B, Fong GW, Adams CM, Varner JL, Hommer D. Dissociation of reward anticipation and outcome with event-related fMRI. *Neuroreport*. 2001. 2001.
<https://doi.org/10.1097/00001756-200112040-00016>.
 20. Monkul ES, Matsuo K, Nicoletti MA, Dierschke N, Hatch JP, Dalwani M, et al. Prefrontal gray matter increases in healthy individuals after lithium treatment: A voxel-based morphometry study. *Neurosci Lett*. 2007;429:7–11.
 21. Kohno T, Shiga T, Toyomaki A, Kusumi I, Matsuyama T, Inoue T, et al. Effects of lithium on brain glucose metabolism in healthy men. *J Clin Psychopharmacol*. 2007. 2007. <https://doi.org/10.1097/jcp.0b013e31815a23c2>.
 22. Beck A, Wart C, Mendelson M, Mock J, Erbaugh J. An inventory for measuring depression. *Arch Gen Psychiatry*. 1961;4:561–571.
 23. Spielberger C, Gorsuch R, Lushene R. STAI manual. Palo Alto, California: Consulting Psychologists Press; 1970.
 24. Hirschfeld RMA, Williams JBW, Spitzer RL, Calabrese JR, Flynn L, Keck J, et al. Development and validation of a screening instrument for bipolar spectrum disorder: The mood disorder questionnaire. *Am J Psychiatry*. 2000. 2000.
<https://doi.org/10.1176/appi.ajp.157.11.1873>.
 25. Price J, Cole V, Doll H, Goodwin GM. The Oxford Questionnaire on the Emotional Side-effects of Antidepressants (OQuESA): Development, validity, reliability and sensitivity to change. *J Affect Disord*. 2012. 2012.
<https://doi.org/10.1016/j.jad.2012.01.030>.
 26. Nelson H, Willison J. The revised national adult reading test–test manual. Windsor, UK: NFER-Nelson; 1991.
 27. Eysenck H, Eysenck S. Manual of the Eysenck personality questionnaire (junior and adult). Sevenoaks, UK: Hodder and Stoughton; 1975.

28. von Zerssen D, Strian F, Schwarz D. Evaluation of Depressive States, Especially in Longitudinal Studies. In: Pichot P, Olivier-Martin R, editors. *Psychol. Meas. Psychopharmacol.*, . 7th ed. Basel, Karger; 1974. p. 189–202.
29. Watson D, Clark LA, Tellegen A. Development and Validation of Brief Measures of Positive and Negative Affect: The PANAS Scales. *J Pers Soc Psychol.* 1988. 1988. <https://doi.org/10.1037/0022-3514.54.6.1063>.
30. Bond A, Lader M. The use of analogue scales in rating subjective feelings. *Br J Med Psychol.* 1974;47.
31. Murphy SE, Norbury R, O’Sullivan U, Cowen PJ, Harmer CJ. Effect of a single dose of citalopram on amygdala response to emotional faces. *Br J Psychiatry.* 2009;194:535–540.
32. Deichmann R, Gottfried JA, Hutton C, Turner R. Optimized EPI for fMRI studies of the orbitofrontal cortex. *Neuroimage.* 2003. 2003. [https://doi.org/10.1016/S1053-8119\(03\)00073-9](https://doi.org/10.1016/S1053-8119(03)00073-9).
33. Gläscher JP, O’Doherty JP. Model-based approaches to neuroimaging: Combining reinforcement learning theory with fMRI data. *Wiley Interdiscip Rev Cogn Sci.* 2010;1:501–510.
34. Rescorla R, Wagner A. A theory of Pavlovian conditioning: Variations in the effectiveness of reinforcement and nonreinforcement. *Class. Cond. Curr. Res. theory, Vol. 2,* 1972.
35. Woolrich MW, Ripley BD, Brady M, Smith SM. Temporal autocorrelation in univariate linear modeling of FMRI data. *Neuroimage.* 2001;14:1370–1386.
36. Zhang Y, Brady M, Smith S. Segmentation of brain MR images through a hidden Markov random field model and the expectation-maximization algorithm. *IEEE Trans Med Imaging.* 2001;20:45–57.
37. Smith SM. Fast robust automated brain extraction. *Hum Brain Mapp.* 2002;17:143–155.

38. Jenkinson M, Bannister P, Brady M, Smith S. Improved optimization for the robust and accurate linear registration and motion correction of brain images. *Neuroimage*. 2002;17:825–841.
39. Beckmann CF, Smith SM. Probabilistic Independent Component Analysis for Functional Magnetic Resonance Imaging. *IEEE Trans Med Imaging*. 2004;23:137–152.
40. Jenkinson M, Smith S. A global optimisation method for robust affine registration of brain images. *Med Image Anal*. 2001;5:143–156.
41. Andersson JLR, Jenkinson M, Smith S. Non-linear registration, aka spatial normalisation. FMRIB Tech Rep TR07JA2. 2010. 2010.
42. Glasser MF, Sotiropoulos SN, Wilson JA, Coalson TS, Fischl B, Andersson JL, et al. The minimal preprocessing pipelines for the Human Connectome Project. *Neuroimage*. 2013;80:105–124.
43. Jenkinson M, Beckmann CF, Behrens TEJ, Woolrich MW, Smith SM. FSL. *Neuroimage*. 2012;62:782–790.
44. Woolrich MW, Jbabdi S, Patenaude B, Chappell M, Makni S, Behrens T, et al. Bayesian analysis of neuroimaging data in FSL. *Neuroimage*. 2009;45:S173-86.
45. Winkler AM, Ridgway GR, Webster MA, Smith SM, Nichols TE. Permutation inference for the general linear model. *Neuroimage*. 2014;92:381–397.
46. Smith SM, Nichols TE. Threshold-free cluster enhancement: Addressing problems of smoothing, threshold dependence and localisation in cluster inference. *Neuroimage*. 2009;44:83–98.
47. Lenhard W, Lenhard A. Calculation of Effect Sizes. 2016.
48. Mai JK, Majtanik M, Paxinos G. Atlas of the Human Brain, 4th Edition. 4th ed. Academic Press; 2015.
49. Seger CA, Cincotta CM. The Roles of the Caudate Nucleus in Human Classification Learning. *J Neurosci*. 2005;25:2941–2951.

50. Scholl J, Kolling N, Nelissen N, Browning M, Rushworth MFS, Harmer CJ. Beyond negative valence: 2-week administration of a serotonergic antidepressant enhances both reward and effort learning signals. *PLOS Biol.* 2017;15:e2000756.
51. Srinivasan R, Fornari E, Knyazeva MG, Meuli R, Maeder P. fMRI responses in medial frontal cortex that depend on the temporal frequency of visual input. *Exp Brain Res.* 2007;180:677–691.
52. Knutson B, Heinz A. Probing Psychiatric Symptoms with the Monetary Incentive Delay Task. *Biol Psychiatry.* 2015;77:418–420.
53. Wilson RP, Colizzi M, Bossong MG, Allen P, Kempton M, Abe N, et al. The Neural Substrate of Reward Anticipation in Health: A Meta-Analysis of fMRI Findings in the Monetary Incentive Delay Task. *Neuropsychol Rev.* 2018;28:496–506.
54. Graf H, Metzger CD, Walter M, Abler B. Serotonergic antidepressants decrease hedonic signals but leave learning signals in the nucleus accumbens unaffected. *Neuroreport.* 2016. 2016. <https://doi.org/10.1097/WNR.0000000000000487>.
55. McCabe C, Mishor Z, Cowen PJ, Harmer CJ. Diminished Neural Processing of Aversive and Rewarding Stimuli During Selective Serotonin Reuptake Inhibitor Treatment. *Biol Psychiatry.* 2010. 2010. <https://doi.org/10.1016/j.biopsych.2009.11.001>.
56. Ikeda Y, Funayama T, Tateno A, Fukayama H, Okubo Y, Suzuki H. Bupropion increases activation in nucleus accumbens during anticipation of monetary reward. *Psychopharmacology (Berl).* 2019. 2019. <https://doi.org/10.1007/s00213-019-05337-6>.
57. Admon R, Kaiser RH, Dillon DG, Beltzer M, Goer F, Olson DP, et al. Dopaminergic enhancement of striatal response to reward in major depression. *Am J Psychiatry.* 2017. 2017. <https://doi.org/10.1176/appi.ajp.2016.16010111>.
58. Wang C, Xu P, Zhang L, Huang J, Zhu K, Luo C. Current Strategies and Applications for Precision Drug Design. *Front Pharmacol.* 2018;9:787.

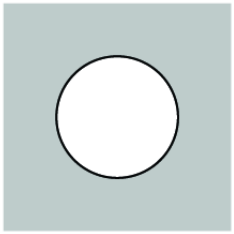
59. Bell EC, Willson MC, Wilman AH, Dave S, Silverstone PH. Differential effects of chronic lithium and valproate on brain activation in healthy volunteers. *Hum Psychopharmacol*. 2005;20:415–424.
60. Moore GJ, Bebchuk JM, Wilds IB, Chen G, Menji HK. Lithium-induced increase in human brain grey matter. *Lancet*. 2000;356:1241–1242.
61. Sassi RB, Nicoletti M, Brambilla P, Mallinger AG, Frank E, Kupfer DJ, et al. Increased gray matter volume in lithium-treated bipolar disorder patients. *Neurosci Lett*. 2002;329:243–245.
62. Bearden CE, Thompson PM, Dalwani M, Hayashi KM, Lee AD, Nicoletti M, et al. Greater Cortical Gray Matter Density in Lithium-Treated Patients with Bipolar Disorder. *Biol Psychiatry*. 2007;62:7–16.
63. Phatak P, Shaldivin A, King LS, Shapiro P, Regenold WT. Lithium and inositol: Effects on brain water homeostasis in the rat. *Psychopharmacology (Berl)*. 2006;186:41–47.
64. Wu CC, Samanez-Larkin GR, Katovich K, Knutson B. Affective traits link to reliable neural markers of incentive anticipation. *Neuroimage*. 2014;84:279–289.
65. Plichta MM, Schwarz AJ, Grimm O, Morgen K, Mier D, Haddad L, et al. Test–retest reliability of evoked BOLD signals from a cognitive–emotive fMRI test battery. *Neuroimage*. 2012;60:1746–1758.
66. Tivarus ME, Pester B, Schmidt C, Lehmann T, Zhu T, Zhong J, et al. Are Structural Changes Induced by Lithium in the HIV Brain Accompanied by Changes in Functional Connectivity? *PLoS One*. 2015;10:e0139118.
67. Vernon AC, Hajek T. Effects of Lithium on Magnetic Resonance Imaging Signal Might Not Preclude Increases in Brain Volume After Chronic Lithium Treatment. *Biol Psychiatry*. 2013;74:e39–e40.

Figure Legends

Figure 1: MID task. A) Example trial. A cue signals a reward (shown here), no reward or no movement trial. After an inter-trial interval, a target is presented during which participants have to respond. Outcome indicates if the response was within the target period (win) and possible reward obtained. When a response was too slow it is coded as a loss.

Figure 2. Lithium modulations on brain activation. A) Brain maps showing group interaction during the anticipation phase (Reward > no reward trials). B) Time-course of the strongest cluster in A. C) Brain maps showing group interaction during outcome phase on reward trials (Win > Loss). D) Time-course of the strongest cluster in C. SE = standard error.

Figure 3. RPE modulation on brain activity. A) Brain maps showing group interaction on the RPE parametric modulation. B) Time-course underlying group interaction.



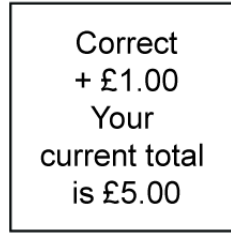
Cue: 250ms



Inter-trial
interval:
2000-2500ms



Target:
between
160-260 ms

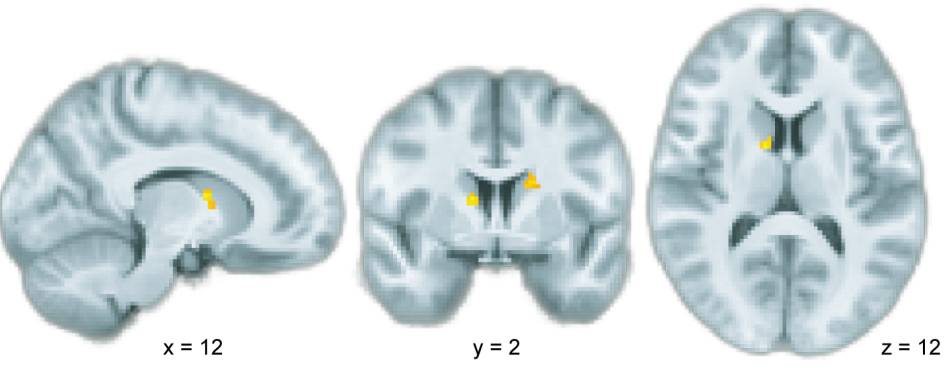


Outcome:
1000ms

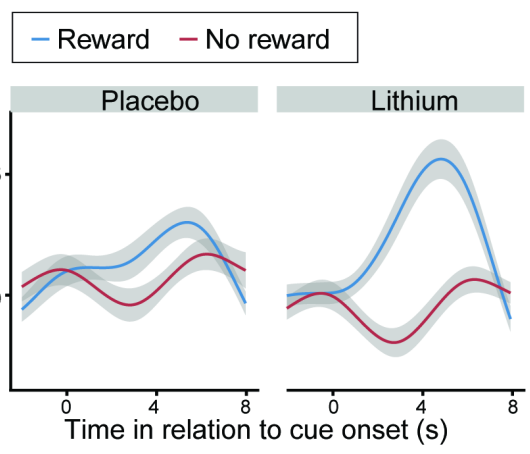


Remainder
of trial to
6000ms

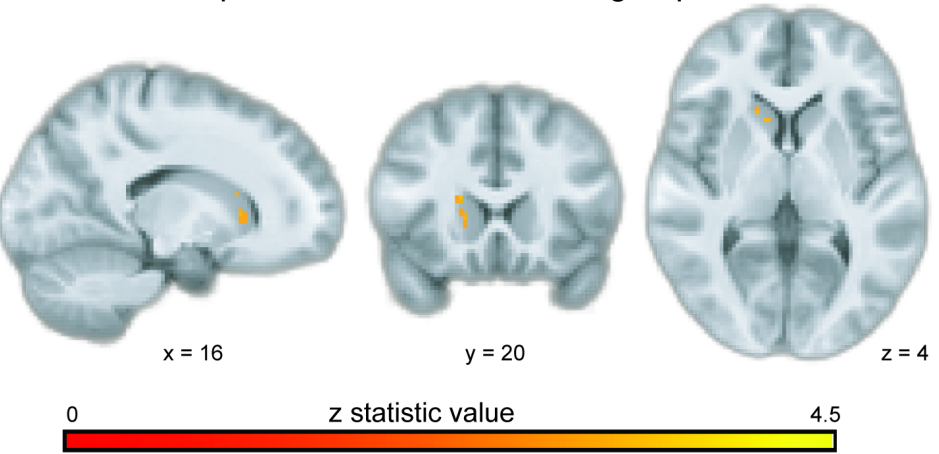
A Reward anticipation phase - Lithium > placebo group



B



C Outcome phase - Placebo > Lithium group



D

