

# Thracian Chamber Tombs (5th-2nd Centuries BC)

## Volume 2: Figures



Blagovesta A. Atanassova  
Lincoln College  
University of Oxford

Thesis submitted for the degree of  
Doctor of Philosophy

Michaelmas Term, 2023

NOTE TO THE READER: Scales are indicated where available; unfortunately, not all tomb plans have a published scale. The scale of the geological maps I have made based on *The Archaeological Map of PR Bulgaria* is 1:500 000.

## LIST OF FIGURES

### CHAPTER 2

- 2.1. Map indicating the location of the Mal Tepe in relation to Petrota. Made by the author.
- 2.2. Map of the Petrota area indicating the locations of ancient quarries, with the two relevant sites (Maurē Petra and Gkazou Mylos) circled in red. Made by the author, after Vavelidēs, Chozidēs, and Melphos 2007, p. 47, fig. 1.
- 2.3. Evidence of ancient quarrying at the Maurē Petra quarry. From Vavelidēs, Chozidēs, and Melphos 2007, p. 48, fig. 2.
- 2.4. Map of the Strelcha-Starossel area, showcasing the location of the Zhaba **(3)** and Chetinyova **(4)** tombs and the two quarries. From Kovachev and Stoyanova 2010, p. 46, fig. 43.
- 2.5. The Popintsi quarry. From Kovachev and Stoyanova 2010, p. 51, fig. 67.
- 2.6. The Hissar quarry. From Kovachev and Stoyanova 2010, p. 52, fig. 69.
- 2.7. Geological map of the Razgrad/Isperikh region showing rich reserves of limestone. Made by the author after Cheshitev and Kanev 1989.
- 2.8. Map of the Sboryanovo Archaeological Reserve. From Stoyanov 2015b, p. 12, fig. 2.
- 2.9. Partial map of Sboryanovo, focusing on the ancient, fortified city, with I, II, and III being confirmed quarries. From Stoyanov and Stoyanova 2012, p. 724, fig. 2.
- 2.10. Diateichisma 3 (front) with the quarry in the background and details from the quarry (a-c). From Stoyanov and Stoyanova 2012, p. 724, fig. 3.

- 2.11. (Quarry III, detail) A block prepared for extraction. From Stoyanov 2015b, p. 220, fig. 4.11.
- 2.12. (Quarry III, detail) Beds from extracted blocks. From Stoyanov 2015b, p. 220, fig. 4.12a.
- 2.13. (Quarry III, detail) Bed from an extracted block. From Stoyanov 2015b, p. 220, fig. 4.12b.
- 2.14. Platform or ramp in quarry III. View from the south. From Stoyanov 2015b, p. 221, fig. 4.13.
- 2.15. Platform or ramp in quarry III. View from the north. From Stoyanov 2015b, p. 221, fig. 4.14.
- 2.16. Map of the location of Kozi Gramadi residence in relation to the Starossel/Hissar region tombs. Made by the author.
- 2.17. The Kozi Gramadi quarry. Rock with grooves in it. From Minkov 2012, p. 207, fig. 6.
- 2.18. The Kozi Gramadi quarry. Bedrock with grooves and trenches in it. From Minkov 2012, p. 208, fig. 9.
- 2.19. The Kozi Gramadi quarry. Step-like beds of quarried blocks in the bedrock showing that the blocks were extracted in stages. From Minkov 2011, p. 205, fig. 2.
- 2.20. Geological map of the area around the Documaci (**77**) tumulus, indicating the locations from where samples were taken. From, Sîrbu, Ştefan and Ştefan 2021, p. 74, fig. 32.
- 2.21. Map of the location of the Vetren (**1**) tomb and relevant modern-day settlements in its vicinity. Made by the author.

- 2.22. Geological map of the area around the Vetren **(1)** tomb. Made by the author after Cheshitev and Kanev 1989.
- 2.23. Map of the location of the Zhaba **(3)** tomb, relevant modern-day settlements in its vicinity, and the area in which the ancient quarry was likely located. Made by the author.
- 2.24. Geological map of the area around the Zhaba **(3)** tomb. Made by the author after Cheshitev and Kanev 1989.
- 2.25. Map showing the approximate location of the Parvenets **(11)** tomb as well as relevant modern-day settlements in its vicinity. Made by the author.
- 2.26. Geological map of the area around the Parvenets **(11)** tomb. Made by the author after Cheshitev and Kanev 1989.
- 2.27. Map of a portion of the Kazanlak valley highlighting the location of the Buzovo Kale fortress and a medieval church near it. Made by the author, after Nekhrizov, Tsvetkova, and Kecheva 2013, p. 562, fig. 2.
- 2.28. Map of a portion of the Kazanlak valley highlighting the location of the Buzovgrad **(32)** tomb and the Buzovo Kale fortress. Made by the author.
- 2.29. Geological map of a portion of the Kazanluk valley, showing the geology of the area around the Buzovgrad **(32)** tomb. Made by the author after Cheshitev and Kanev 1989.
- 2.30. Map indicating the location of the Elaphochori **(50)** in relation to Metaxedes. Made by the author.
- 2.31. Geological map of the Metaxades area. From Tzamos, Kantrianis, papastergios, Vogiatzis, Filippidis, and Sikalidis 2011, p. 181, fig. 1.

- 2.32. Map of the location of the Filipovo **(10)** tomb, relevant modern-day settlements in its vicinity. Made by the author.
- 2.33. Geological map of the area around the Filipovo **(10)** tomb. Made by the author after Cheshitev and Kanev 1989.
- 2.34. Map of the locations of Khrabrino and Kralevo. Made by the author.
- 2.35. The lead plumb found on the exterior of the western wall of the burial chamber of the Sveshatri **(69)** tomb. From Chichikova, Stoyanov and Stoyanova 2012, p. 102, cat. # 26.
- 2.36. Lead plumb found at the Kozi Gramadi fortified residence. From Hristov 2011c, p. 118, fig. 4.
- 2.37. Hoe from Momina tumulus. From Tonkova 2011, p. 11, fig. 4.
- 2.38. Pickaxe from Momina tumulus. From Tonkova 2011, p. 11, fig. 5.
- 2.39. Hoe and pickaxe from Momina tumulus *in situ*. From Tonkova 2011, p. 11, fig. 3.
- 2.40. Fragment of a saw from Seuthopolis. From Ognenova-Marinova 1984, p. 190, fig. 32.
- 2.41. Chisels from Seuthopolis. From Ognenova-Marinova 1984, p. 190, fig. 33-35.
- 2.42. The mudbrick construction at the entrance of the Filipovo **(10)** tomb. From Botusharova and Kolarova 1961, p. 284, fig. 7.
- 2.43. The façade and entrance to the dromos of the Gagovo **(68)** tomb at the time of excavation (view from the exterior). From Rusev and Stoyanova 2011, p. 210, fig. 4.
- 2.44. The façade and dromos of the Gagovo **(68)** tomb in 2019 (view from the interior). Made by the author.

- 2.45. Section of the mudbrick construction of the dromos/façade of the Gagovo **(68)** tomb in 2019. Made by the author.
- 2.46. One of the few available images of the Rhuzhitsa tomb at the time of excavation. View of the dromos and entrance. The mudbrick is difficult to discern. From the website of the Bulgarian Megaliths Project (<http://www.balkanmegaliths.bgjourney.com/Bulgaria/SpecMegObj/QM/QM-009BG/QM-009BG.html>)
- 2.47. A Corinthian-type pan tile from the Shushmanets **(14)** tomb. From Dimitrova 2013c, p. 145, fig. 5.
- 2.48. Rooftile fragments from the Documaci **(77)** tomb. From Sîrbu, Ştefan and Ştefan 2021, p. 302, fig. 188.
- 2.49. Roof tiles excavated in the dromos of the Grifoni **(16)** tomb. From Kitov 2003d, p. 306, fig. 6.
- 2.50. Preserved portion of the cover structure over the Grifoni **(16)** tomb, featuring roof tiles. From Dimitrova 2019b, p. 50, fig. 16.
- 2.51. Drawing of the preserved portion of the cover structure of the Grifoni **(16)** tomb, featuring rooftiles. From Dimitrova 2019b, p. 50, fig. 17.
- 2.52. Location of Seuthopolis. Made by the author.
- 2.53. A brick well from Seuthopolis. From Chihikova and Dimitrov 2016, p. 168, fig. 66.
- 2.54. Bricks (rectangular) from Seutopolis and its necropolis, now at the Kazanluk Museum “Iskra”. Made by the author.

- 2.55. Bricks (sector/trapezoidal (R)) from Seutopolis and its necropolis, now at the Kazanluk Museum “Iskra”. Made by the author.
- 2.56. Sample trapezoidal/sectional (R) bricks from Seuthopolis and its necropolis. Made by the author, after Chichikova 1957, p. 142-143, figs. 13-14.
- 2.57. Bricks from Seuthopolis with a section under an angle. From Chichikova and Dimitrov 2016, p. 191, fig. 112.
- 2.58. Bricks from Seuthopolis with a section under an angle. Made by the author after Chichikova 1957, p. 144, fig. 15.
- 2.59. The tomb **(21)** in tumulus 4 in the necropolis of Seuthopolis. Sectional and rectangular bricks are visible in situ. From Chichikova and Dimitrov 2016, p. 190, fig. 111.
- 2.60. The two tombs in Koprinka tumulus 2 **(20)**, made of reused bricks. From Chichikova and Dimitrov 2016, p. 188, fig. 108.
- 2.61. The two tombs in Koprinka tumulus 2 **(20)**, made of reused bricks. From Chichikova 1957, p. 135, fig. 3.
- 2.62. Map of the location of all brick-built tombs. Made by the author.
- 2.63. Map of the settlements in which pre-Roman kilns for architectural ceramics were found. Made by the author.
- 2.64. The Pistiros kiln at the time of excavation. From Taneva 2009, p. 253, fig. 2.
- 2.65. Plan and cross-sections of the Pistiros kiln. From Taneva 2011, p. 28, fig. 1.
- 2.66. Cross-sections of the Pistiros kiln. From Taneva 2011, p. 28, fig. 1.
- 2.67. Plan of the Hrisosotira kiln. Made by the author after Hristov 2017, p. 54.
- 2.68. Tile-maker at Corigliano loading a kiln. From Sapirstein 2008, p. 91, fig. 4.7.

- 2.69. Plan of the production centre at Halka Bunar. From Tonkova 2002, p.165, fig. 2.1.
- 2.70. Photograph of the two interconnected kilns at the Chirpan production centre.  
From Tonkova, Stamberova, and Dankova 2021, p. 503, fig. 2.
- 2.71. Stone lintels of the entrance to the burial chamber of the Sarafova **(26)** tomb.  
Made by the author.
- 2.72. Stone lintels of the entrance to burial chamber of the copy of the Kazanluk **(22)** tomb. Made by the author.
- 2.73. Stone lintels of the entrance to the burial chamber of the Kesteleva **(29)** (L) tomb.  
From Kitov 2005a, p. 43, fig. 55.
- 2.74. Stone lintels of the entrance to the burial chamber of the Popova **(33)** (R) tomb.  
From Dimitrova 2013b, p. 303, fig. 11.
- 2.75. Keystone from Racheva tomb. From Dimitrova 2012, p. 183, fig. 9.
- 2.76. Photo of façade of Popova tomb. From Dimitrova 2013c, p. 299, fig. 4.
- 2.77. Drawing of façade of Popova tomb. From Dimitrova 2013c, p. 302, fig. 8.
- 2.78. Main entrances to the Sarafova tomb, made entirely of brick. Made by the author.
- 2.79. Main entrances to the Kazanluk tomb, made entirely of brick. Made by the author.

### CHAPTER 3

- 3.1. Map of all tombs, displayed by plan type and time period. Made by the author.
- 3.2. Tomb distribution (by type and time period) in north-eastern Thrace. Made by the author.
- 3.3. Tomb distribution (by type and time period) in central Thrace. Made by the author.

3.4. Tomb distribution (by type and time period) in southern and south-eastern Thrace.

Made by the author.

3.5. View of the entrance of the dromos of the Naip **(49)** tomb. From Delemen 2004, p. 4, fig. 5.

3.6. View of the interior of the dromos of the Naip **(49)** tomb. From Delemen 2004, p. 11, fig. 13.

3.7. The façade of the Borovo **(72)** tomb. Made by the author.

3.8. View of the entrance and porch of the Vetren **(1)** tomb, showcasing the remaining stucco on the exterior. Made by the author.

3.9. Detail of the entrance and porch of the Vetren **(1)** tomb, showcasing the remaining stucco on the exterior. Made by the author.

3.10. Detail of the entrance and porch of the Vetren **(1)** tomb, showcasing the remaining stucco on the exterior. Made by the author.

3.11. View of the remaining stucco on the exterior of the Shushmanets **(14)** tomb. Made by the author.

3.12. Detail of the remaining stucco on the exterior of the Shushmanets **(14)** tomb. Made by the author.

3.13. Detail from the lid of the monolithic burial chamber of the Ostrusha **(18)** tomb, showing remnants of stucco. Made by the author.

3.14. Metal rings used for holding the wings of the door of the burial chamber of the Mezek **(41)** tomb. Made by the author.

3.15. Holes for the metal rings used for holding the wings of the door of the burial chamber of the Golyama Arsenalka **(17)** tomb. Made by the author.

- 3.16. Detail from the interior of the tomb in tumulus 12 at Sboryanovo (**70**), showing the niche for the sliding door of the tomb. From the Sboryanovo National Reserve website (<https://www.sborianovo.com/bg/galleries/6.html>)
- 3.17. Detail from the interior of the tomb in tumulus 13 at Sboryanovo (**71**), showing the niches for the sliding door of the tomb. From the Sboryanovo National Reserve website (<https://www.sborianovo.com/bg/galleries/6.html>)
- 3.18. Detail from the interior of the Borovo (**69**) tomb, showing the upper niche for the sliding door of the tomb. Made by the author.
- 3.19. Detail of the doorframe of the main entrance of the Zhaba (**3**) tomb. Made by the author.
- 3.20. Detail of the doorframe of the main entrance of the Chetinyova (**4**) tomb. Made by the author.
- 3.21. Drawing of the acroterion from the Kurt Kale (**42**) tomb. From Theodossiev and Stoyanova 2010, p. 182, fig. 7.
- 3.22. Detail of the façade Smyadovo (**60**) tomb, including the acroterion. From Dana 2015, p. 246, fig. 17.1
- 3.23. The acroteria from the Ostrusha (**18**) tomb. Made by the author.
- 3.24. Detail from the painted decoration of the antechamber of the (copy of) Kazanluk (**22**) tomb, focusing on the vegetal motif on black background. Made by the author.
- 3.25. Detail from the painted decoration of the antechamber of the (copy of) Kazanluk (**22**) tomb, focusing on the vegetal motif on black background. Made by the author.

- 3.26. Detail from the painted decoration of the antechamber of the Aleksandrovo **(37)** tomb, focusing on the vegetal motif on black background. From Giurdzhiiska 2013, p.140, fig. 3.
- 3.27. Map of the locations of the Brestovitsa **(12)** and Furtunova **(31)** tombs. Made by the author.
- 3.28. View of the interior of the sarcophagus-like burial chamber of the Ostrusha **(18)** tomb, showcasing the holes used to attach the door. Made by the author.
- 3.29. Map of the locations of the Brestovitsa **(12)** and Furtunova **(31)** tombs. Made by the author.
- 3.30. View of the entrance to the sarcophagus-like burial chamber of the Golyama Kosmatka **(13)** tomb, showcasing the holes used to attach the door. Made by the author.
- 3.31. Detail from the burial chamber of the tomb in the Golyama Arsenalka **(17)** tomb. Made by the author.
- 3.32. The funerary bed in the Popova **(33)** tomb. From Dimitrova 2013b, p. 304, fig. 14.
- 3.33. The funerary bed in the Muglizzh **(28)** tomb. Tsanova and Getov 1973, p. 19, fig. 7.
- 3.34. Plan of the tombs in the Popova **(33)** tombs, highlighting the placement of the funerary bed. Made by the author, after Dimitrova 2013b, p. 299, fig. 2.
- 3.35. Plans of the tomb in the Muglizzh **(28)** tomb, highlighting the placement of the funerary bed. Made by the author, after Tsanova and Getov 1973, p. 17, fig. 2a.
- 3.36. Drawing of female portrait head from the Hall of Choral Dances on Samothrace. From Six 1905, p. 157, fig. 3.

- 3.37. Drawing featuring the depiction of Demeter from the Bolshaya Bliznitsa tomb.  
From Valeva 2005, p. 35, fig. 9.
- 3.38. Reconstruction drawing of the portrait of Demeter from the Bolshaya Bliznitsa tomb. From Tancke 1989, p. 32, fig. 16.
- 3.39. Reconstruction drawing of a coffer from the Mausoleum of Halicarnassus. From Tancke 1989, p. 30, fig. 12.
- 3.40. One of the Belevi Mausoleum coffer plaques depicting the Centauromachy. From Ruggendorfer 2016, fig. 72.1.
- 3.41. Detail from the painted procession scene from the Sveshtari **(69)** tomb showing the horseman wearing a diadem featuring what appears to be a horn. From Rabadjiev 2016, fig. 19.
- 3.42. Silver tetradrachm of Lysimachus featuring Alexander wearing a diadem featuring a ram's horn. From The Art institute of Chicago (<https://www.artic.edu/artworks/5764/tetradrachm-coin-portraying-alexander-the-great>)
- 3.43. The façade of tomb I in Bella tumulus at Vergina. From Brecolouaki 2006, fig. 59.1.
- 3.44. Signet ring from the Malomirovo-Zlatinitsa tumulus. From Tonkova 2016, p. 487, fig. 5.
- 3.45. Signet ring from Brezovo. From Popov and Fol 2010, p. 176.
- 3.46. Signet ring from the Golyamata tumulus at Rozovets From Tonkova 2016, p. 487, fig. 6.

3.47. Drawing of the burial chamber of the tomb at Aghia Triadha (Rhodes). From Touchais 1982, p. 614, fig. 149.

## CHAPTER 4

4.1. Lamellae from iron pectoral from the Shushmanets (**14**) tomb. From Dimitrova 2013c, p. 150, fig 18.

4.2. Lamellae-made pectoral from tomb B at Derveni. From Themelis and Touratsoglou 1997, pl. 19, cat. # B46.

4.3. Lamellae-made pectoral from the Golyamata tumulus at Malomirovo-Zlatinitsa. From Agre 2011, p. 76, fig. III-18.

4.4. Vase-shaped pendant from the Mal-Tepe (**41**) tomb. From Tzochchev 2014, p. 53, fig. 3.

4.5. Pendant from the Koukova tumulus. From Tonkova 2015, p. 215, fig. 15.1.

4.6. Pendant from the Malka Kosmatka tumulus. From Dimitrova 2019a, p. 107, fig. 37.

4.7. Silver vessels from the Ostrusha (**18**) tomb after restoration. From Parvin 2022, p. 346, tab. 1d.

4.8. Pectoral from the Ostrusha (**18**) tomb. From Dimitrova 2015a, p. 180, fig. 147.

4.9. Oinochoe from the Golyama Kosmatka (**13**) tomb. From Tzovchev 2016, p. 783, fig. 3.

4.10. Inscribed kalyx-cup from the Golyama Kosmatka (**13**) tomb. From Tzovchev 2016, p. 784, fig. 4.

4.11. Inscribed jug from the Naip (**49**) tomb. From Delemen 2004, p. 61, fig. 52.

- 4.12. Detail from the inscribed jug from the Naip **(49)** tomb. From Delemen 2004, p. 61, fig. 56.
- 4.13. Oinochoe from the Naip **(49)** tomb. From Delemen 2006, p. 266, fig. 16.
- 4.14. Oinochoe from Malomirovo-Zlatinitsa. From Agre 2015, p. 103, cat. # 65.
- 4.15. Oinochoe from the Mogilanskata tumulus. From Torbov 2015, p. 283.
- 4.16. Oinochoe from tomb III at Vergina. From Kottaridi 2013, p. 326.
- 4.17. Oinocoe from tomb A at Derveni. From Themelis and Touratsoglou 1997, pl. 4, cat. # A3.
- 4.18. Oinocoe from tomb A at Derveni. From Themelis and Touratsoglou 1997, pl. 40, cat. # A5.
- 4.19. Situla from the Mal-Tepe **(41)** tomb. From Filov 1937, p. 59, fig. 60.
- 4.20. Situla fragments from the Kaloyanovo **(35)** tomb. From Chichikova 1969, p. 69, fig. 20.
- 4.21. Drawing of the situla from the Rouets **(66)** tomb. From Velkov 1929, p. 40, fig. 50.
- 4.22. Patera from the Golyama Kosmatka **(13)** tomb. From Dimitrova 2015b, p. 149, cat. # 109.
- 4.23. Patera from the Naip **(49)** tomb. From Delemen 2006, p. 266, fig. 15.
- 4.24. Patera from tomb II at Vergina. From Drogou 2011, p. 192, fig. 221.
- 4.25. Patera from tomb II at Vergina. From Kottaridi 2013, p. 324.
- 4.26. Strainer from the Kaloyanovo **(35)** tomb. From Chichikova 1969, p. 72, fig. 22.
- 4.27. Strainer from the Rouets **(66)** tomb. From Velkov 1929, p. 41, fig. 52.
- 4.28. Strainer from Naip **(49)** tomb. From Delemen 2006, p. 263, fig. 11.

- 4.29. Sword and scabbard from the Golyama Kosmatka **(13)** tomb. From Dimitrova 2015b, p. 130-131, cat. # 92.
- 4.30. Armour featuring lamellae from Malomirovo-Zlatinitsa. From Agre 2011, p.74, fig. III-16
- 4.31. Bronze cuirass (front) from the Tatarevo **(36)** tomb. From Velkov 1929, p. 44, fig. 56.
- 4.32. Bronze cuirass (back) from the Tatarevo **(36)** tomb. From Velkov 1929, 44, fig. 57.
- 4.33. Bronze armour (front) from the Rouets **(66)** tomb. From Velkov 1929, p. 42, fig. 53.
- 4.34. Bronze armour (back) from the Rouets **(66)** tomb. From Velkov 1929, p. 42, fig. 54.
- 4.35. Bronze armour (bottom piece) from the Rouets **(66)** tomb. From Velkov 1929, p. 44, fig. 55.
- 4.36. Pectoral from the Golytama Kosmatka **(13)** tomb. From Dimitrova 2015a, p. 179, fig. 146.
- 4.37. Pectoral from the Mal-Tepe **(41)** tomb. From Von Bothmer 1977, pl. 7.
- 4.38. Pectoral from tomb II at Vergina. From Kottaridi 2013, p. 217.
- 4.39. Pectoral from tomb II at Vergina. Kottaridi 2013, p. 272.
- 4.40. Pectoral from tomb III at Vergina. Kottaridi 2013, p. 335.
- 4.41. Helmet from the Golyama Kosmatka **(13)** tomb. From Dimitrova 2015b, p. 127, cat. # 89.

- 4.42. Helmet fragment from the Kaloyanovo **(35)** tomb. From Chichikova 1969, p. 67, fig. 19.
- 4.43. Drawings of the helmet from the Rouets **(66)** tomb. From Velkov 1929, p. 45, fig. 58.
- 4.44. Helmet from the Sashova **(23)** tomb. From Kitov 2005c, p. 13, fig. 10.
- 4.45. Greaves from the Golyama Kosmatka **(13)** tomb. From Dimitrova 2015b, p.
- 4.46. Greaves from tomb II Vergina. From Graecos 2011, p. 91, fig. 78.
- 4.47. Greaves from tomb A at Derveni. From Themelis and Touratsoglou 1997, pl. 7, cat. # A15.
- 4.48. Greaves from Malomirovo-Zlatinitsa. From Agre 2015, p. 95, cat. # 54.
- 4.49. Greaves from the Mogilanskata tumulus. From Torbov 2015, p. 279, cat. # 240.
- 4.50. Wooden fragment from a shield from the Golyama Kosmatka **(13)** tomb. From Dimitrova 2015a, p. 164, fig. 133.
- 4.51. Fragment from the iron casting of a shield from the Golyama Kosmatka **(13)** tomb. From Dimitrova 2015a, p. 163, fig. 131.
- 4.52. Appliqués from a shield from the Golyama Kosmatka **(13)** tomb. From Dimitrova 2015b, p. 128, cat. # 90.
- 4.53. Shield remains from the Naip **(49)** tomb. From Delemen 2006, p. 267, fig. 17.
- 4.54. Ring from a grave in the Kazanluk valley featuring a turtle. From Kitov 2005c, p. 30, fig. 30.
- 4.55. Wreath from the Golyama Kosmatka **(13)** tomb. From Dimitrova 2015b, p. 122, cat. # 84.

- 4.56. Wreath from Sanctuary of Eukleia at Vergina. From Saatsoglou-Paliadeli 2011, p. 202, fig. 229.
- 4.57. Wreath from tomb II at Vergina. From Kottaridi 2011, p. 21, fig. 23.
- 4.58. Wreath from tomb III at Vergina. From Kottaridi 2013, p. 316.
- 4.59. Wreath from Amphipolis. From Kyriakou 2014, p. 266, fig. 21.
- 4.60. Wreath from the Naip **(49)** tomb. From Delemen 2004, p. 54, fig. 44.
- 4.61. Coin of Seuthes III. From Tonkova 2013, p. 444, fig. 29.
- 4.62. Gold threads from the Golyama Kosmatka **(13)** tomb. From Dimitrova 2015a, p. 136, fig. 105.
- 4.63. Gold threads from the Momina **(34)** tomb. From Tonkova 2011, p. 15, fig. 12.
- 4.64. Bronze lamp from the Kaloyanovo **(35)** tomb. From Chichikova 1969, p. 73, fig. 23.
- 4.65. Bronze lamp from the Mal-Tepe **(41)** tomb. From Filov 1937, p. 63, fig. 66
- 4.66. Bronze lamp from the Naip **(49)** tomb. From Delemen 2004, p. 92, fig. 88.
- 4.67. Lamp stand from Kyrenia. From Karageorghis 1965, p. 25p, fig. 46.
- 4.68. Lamp stand from Kozani. From Kallipolitou and Feytmans 1951, p. 104, fig. 21.
- 4.69. Lamp stand from Kozani. Kallipolitou and Feytmans 1951, p. 104, Fig. 20.
- 4.70. Pyxis from the Golyama Kosmatka **(13)** tomb. From Dimitrova 2015b, p. 134, cat. # 101.
- 4.71. Gaming set from the Golyama Kosmatka **(13)** tomb. From Dimitrova 2015b, p. 142, cat. # 110.

## CHAPTER 6

- 6.1. Satellite map of the Kazanluk valley showing the local terrain. Made by the author.
- 6.2. Map of Kozi Gramadi peak, indicating the locations of notable archaeological sites in the area, including Chetinyova **(4)** tumulus labelled under “Thracian Sanctuary”.  
From Hristov 2011a, p. 216.
- 6.3. Map of the area surrounding Pistiros. From Domaradzki 1995, p. 43.
- 6.4. Plan of the tomb in Shushmanets **(14)** tumulus showing the supporting wall. From Dimitrova 2013c, p. 144, fig. 3.
- 6.5. Drawing of the supporting wall of the tomb in the Shushmanets **(14)** tumulus. From Dimitrova and Parvin 2013, p. 174, fig. 1.
- 6.6. Photogrammetric model and a drawing of a section of the crepis wall of Chetinyova **(4)** tumulus with view from above. From Tzochev, Dimitrova, and Stoyanova 2020, p. 564, fig. 2.1.
- 6.7. Photogrammetric model and a drawing of a section of the crepis wall of Chetinyova **(4)** tumulus with view from above. From Tzochev, Dimitrova, and Stoyanova 2020, p. 564, fig. 2.3.
- 6.8. Photogrammetric models and drawing of one of the connective ashlar in the crepis of Chetinyova **(4)** tumulus. From Tzochev, Dimitrova, and Stoyanova 2020, p. 565, fig. 3.
- 6.9. A section of ashlar with clamp holes from the crepis of Chetinyova **(4)** tumulus.  
From Tzochev, Dimitrova, and Stoyanova 2020, p. 566, fig. 4.3.
- 6.10. Exterior view of a section of the crepis of the Documaci **(77)** tumulus. From Sîrbu, Ștefan, and Ștefan 2021, p. 82, fig. 36b.

- 6.11. Interior view of a section of the crepis of the Documaci (77) tumulus. From Sîrbu, Ştefan, and Ştefan 2021, p. 82, fig. 36d.
- 6.12. Drawing of the section of the crepis wall of the Documaci (77) tumulus with a collapse in front of it. From Sîrbu, Ştefan, and Ştefan 2021, p. 82, fig. 36e.
- 6.13. Plan of Rigio tumulus Γ (52), indicating the position of the concentric circles of the earlier tumulus and the Hellenistic tomb. From Triantaphyllos and Terzopoulou 1998, p. 479, fig. 4.
- 6.14. The first of the two escharas from the Buzovgrad (32) tumulus. From Nekhrizov 2013b, p. 173, fig. 17.
- 6.15. The second eschara from the Buzovgrad (32) tumulus, built on top of the first one. From Nekhrizov 2013b, p. 173, fig. 18.
- 6.16. The tub-like container in the north-western periphery of Chetinyova (4) tumulus. Made by the author.
- 6.17. The tub-like container in the north-western periphery of Chetinyova (4) tumulus. Made by the author.
- 6.18. The platform in Documaci (77) tumulus, as seen from the north-west. From Sîrbu, Ştefan and Ştefan 2021, p. 134, fig. 74.
- 6.19. Location of the platform in Documaci (77) tumulus. From Sîrbu, Ştefan and Ştefan 2021, p. 144, fig. 82.
- 6.20. Location of the Documaci (77) tumulus platform in relation to the built chamber tomb. From Sîrbu, Ştefan and Ştefan 2021, p. 135, fig. 75.
- 6.21. Stone platform in a tumulus in the Callatis necropolis. From Sîrbu, Ştefan and Ştefan 2021, p. 151, fig. 87.

- 6.22. The bronze boar from Mal-Tepe **(41)** tumulus. From Filov 1937, p. 35, fig. 34.
- 6.23. The bronze boar from Mal-Tepe **(41)** tumulus. From Filov 1937, p. 36, fig. 35.
- 6.24. View of the facade of the tomb within Chernichino **(40)** tumulus showcasing the “staircase” leading to it. From Nekhrizov and Tsvetkova 2008, p. 261, fig. 1.1.
- 6.25. Secondary grave in Ostrusha **(18)** tumulus. From Bozhkova and Dimitrova 2020, p. 327, fig. 4.
- 6.26. Secondary grave in Ostrusha **(18)** tumulus. From Bozhkova and Dimitrova 2020, p. 328, fig. 5.
- 6.27. The antefixes and central acroterion from Ostrusha **(18)**. Made by the author.
- 6.28. The antefixes and central acroterion from Ostrusha **(18)**. Made by the author.
- 6.29. The antefixes and central acroterion from Ostrusha **(18)**. Made by the author.
- 6.30. Plan of the Malomirovo-Zlatinitsa burial with the horses and the dog.
- 6.31. Equine burial in a tumulus at Goyrani/Hadzhidimovo. From Rabadjiev 2014, p. 204, fig. 9.C11.
- 6.32. Equine burial in a tumulus at Asara, Plovdiv. From Rabadjiev 2014, p. 204, fig. 9.C12.
- 6.33. Equine burial in a tumulus at Iasenovo. From Rabadjiev 2014, p. 204, fig. 9.C17.
- 6.34. Restored silver gilt jug from the tumular embankment of the Kazanluk **(22)** tomb. Made by the author.

# FIGURES

## CHAPTER 2



Figure 2.1: Map indicating the location of the Mal Tepe in relation to Petra

Κλίμακα 1:30.000

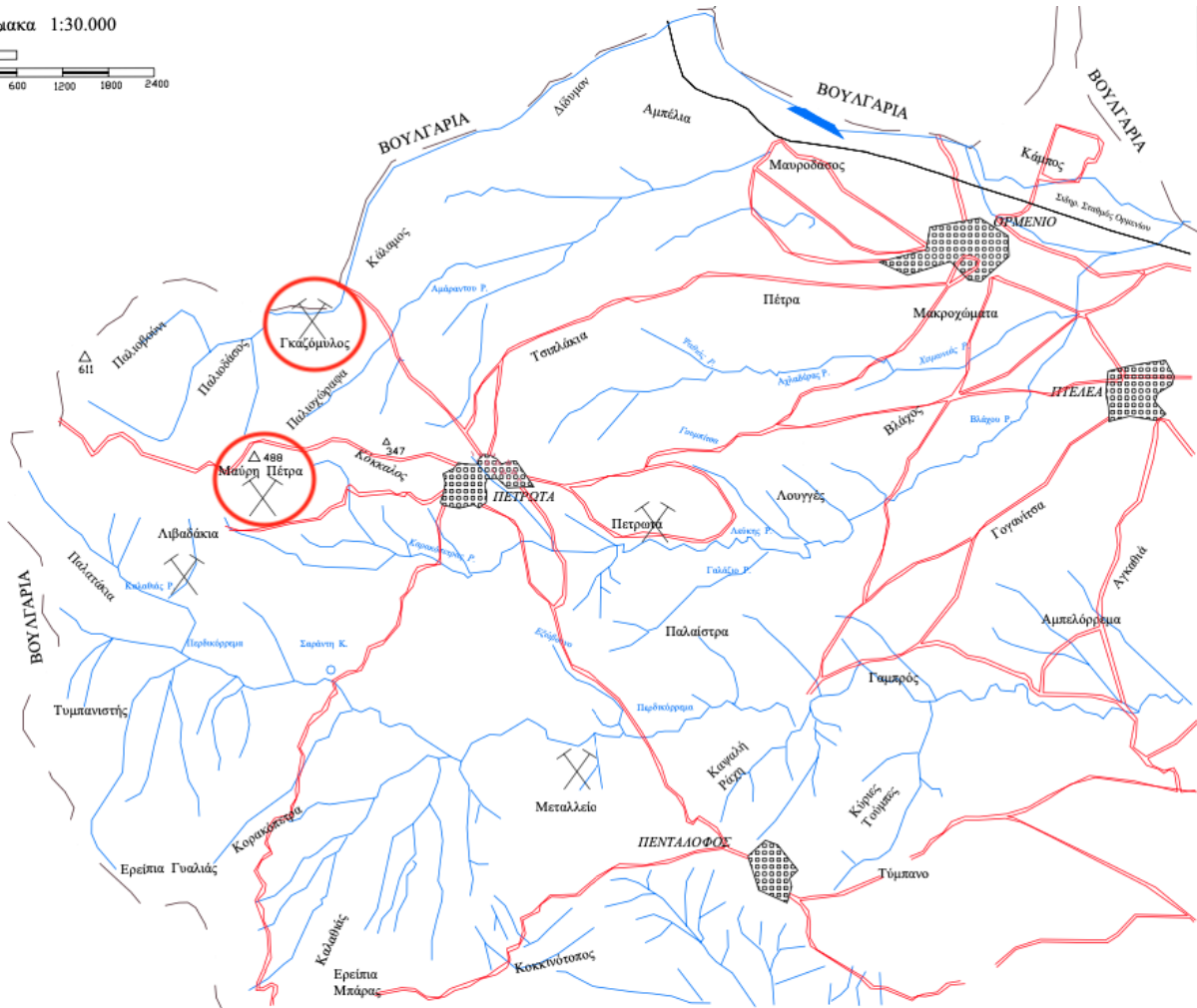


Figure 2.2: Map of the Petrota area indicating the locations of ancient quarries, with the two relevant sites (Maurē Petra and Gkazou Mylos) circled in red



Figure 2.3: Evidence of ancient quarrying at the Maurē Petra quarry

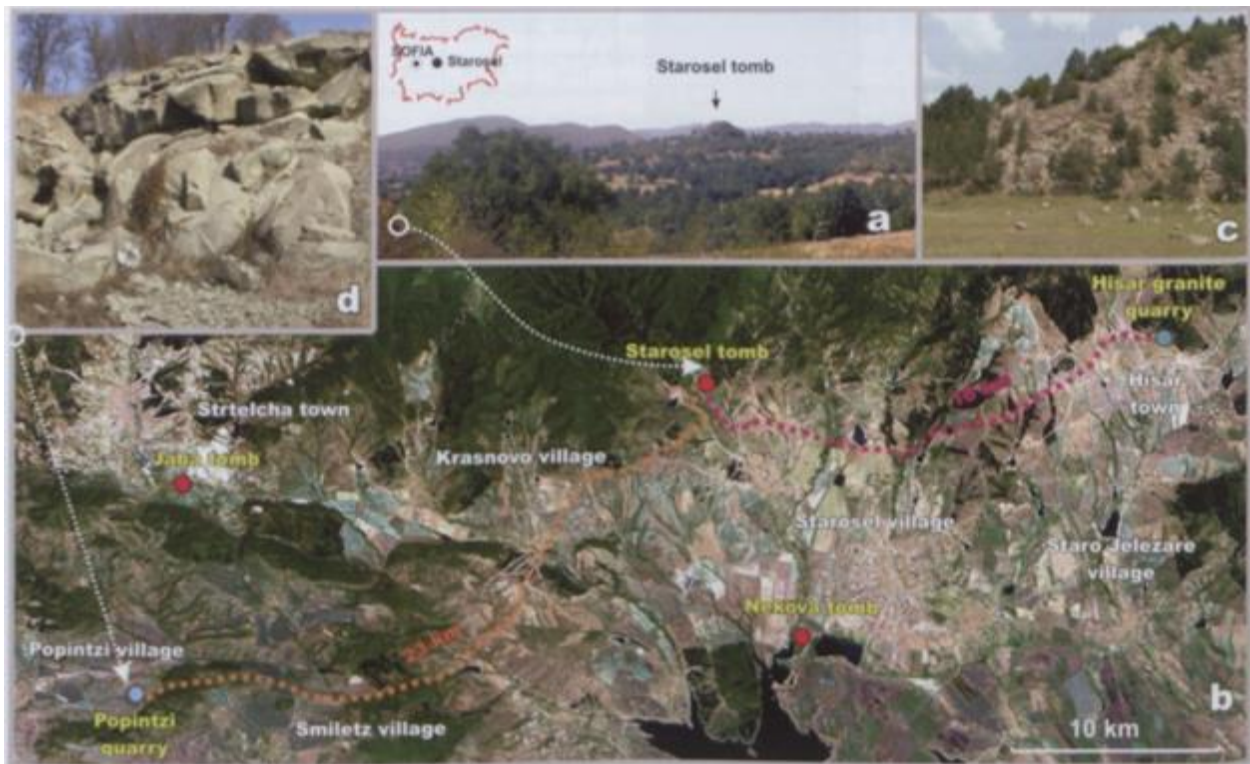


Figure 2.4: Map of the Strelcha-Starosel area, showcasing the location of the Zhaba (3) and Chetinyova (4) tombs and the two quarries



Figures 2.5 and 2.6: The Popintsi (L) and Hissar (R) quarries



Figure 2.7: Geological map of the Razgrad/Ispertikh region showing rich reserves of limestone

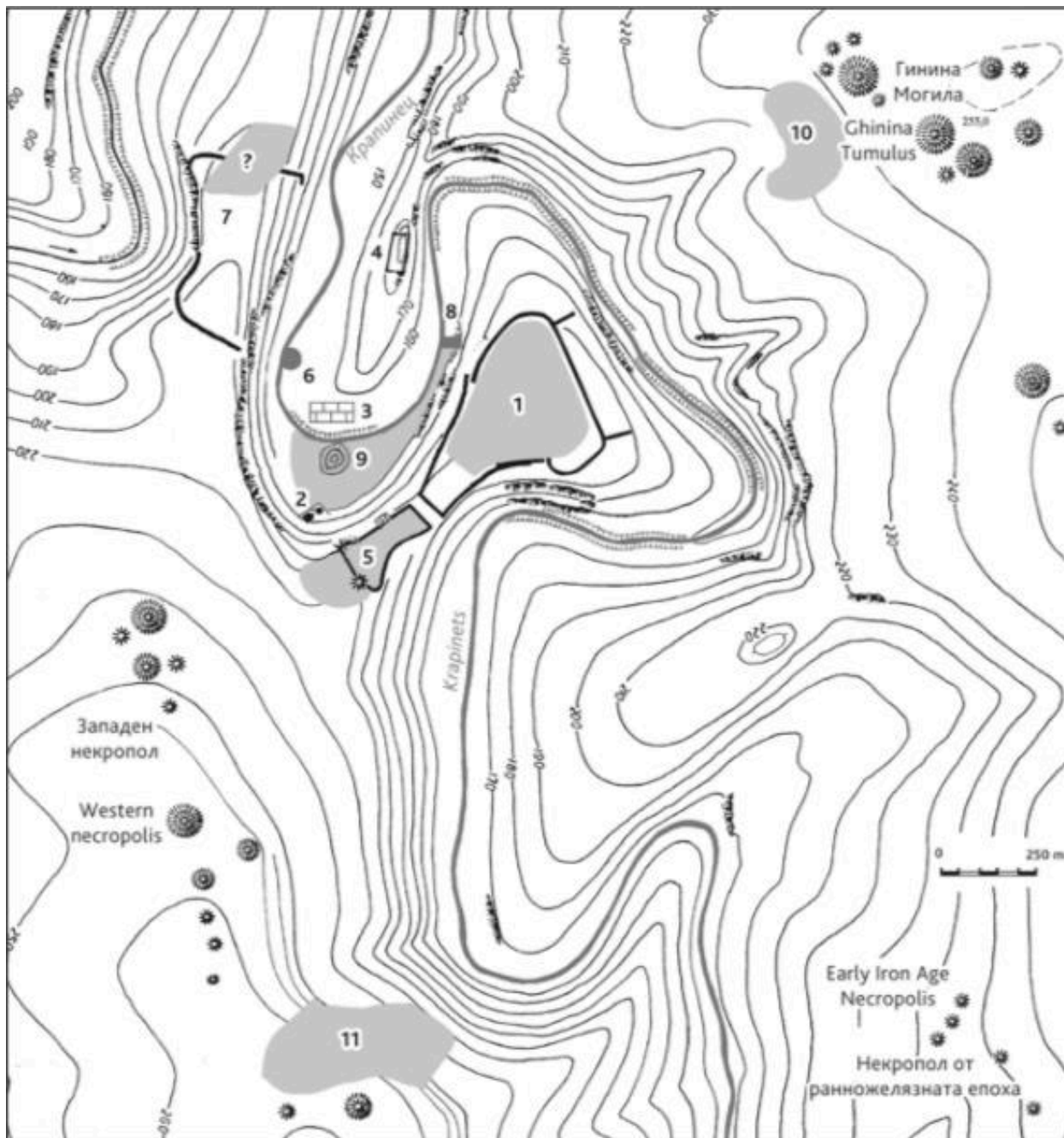


Figure 2.8: Map of the Sboryanovo Archaeological Reserve. 1 – Citadel of the Thracian city. 2 – Sanctuary at Demir Baba Tekke, the reservoir, and the suburb to the North. 3 – Stone quarries. 4 – Late Antique fort in the Nosa locality. 5 – Kale Dimitrovo –Late Roman Fortress. 6 – Dipsiz göl lake. 7 –Kamen Rid Archaeological site. 8 – Diateichisma No. 3. 9 – Early Iron Age necropolis. 10 – Satellite structure outside the city in the petrova niva locality. 11- Satellite structure outside the city

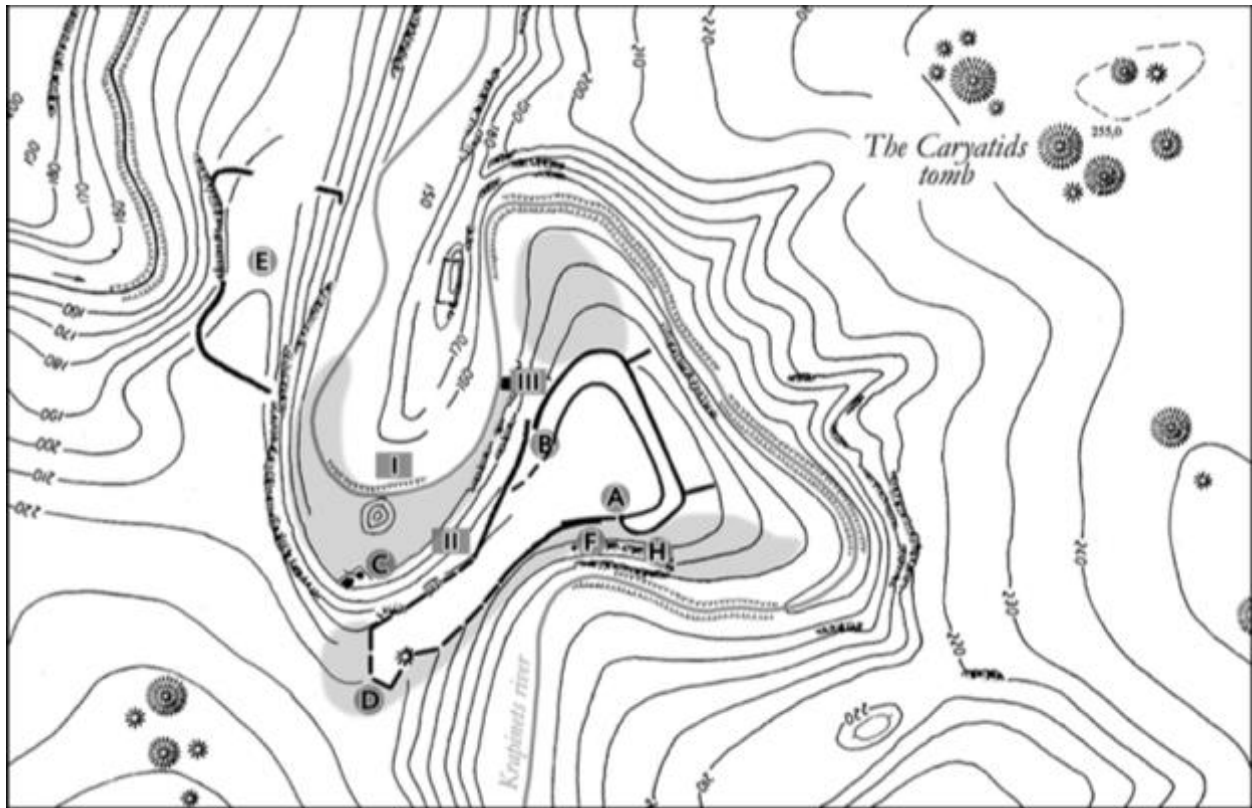


Figure 2.9: Partial map of the Sbornovo, focusing on the ancient, fortified city, with I, II, and III being confirmed quarries

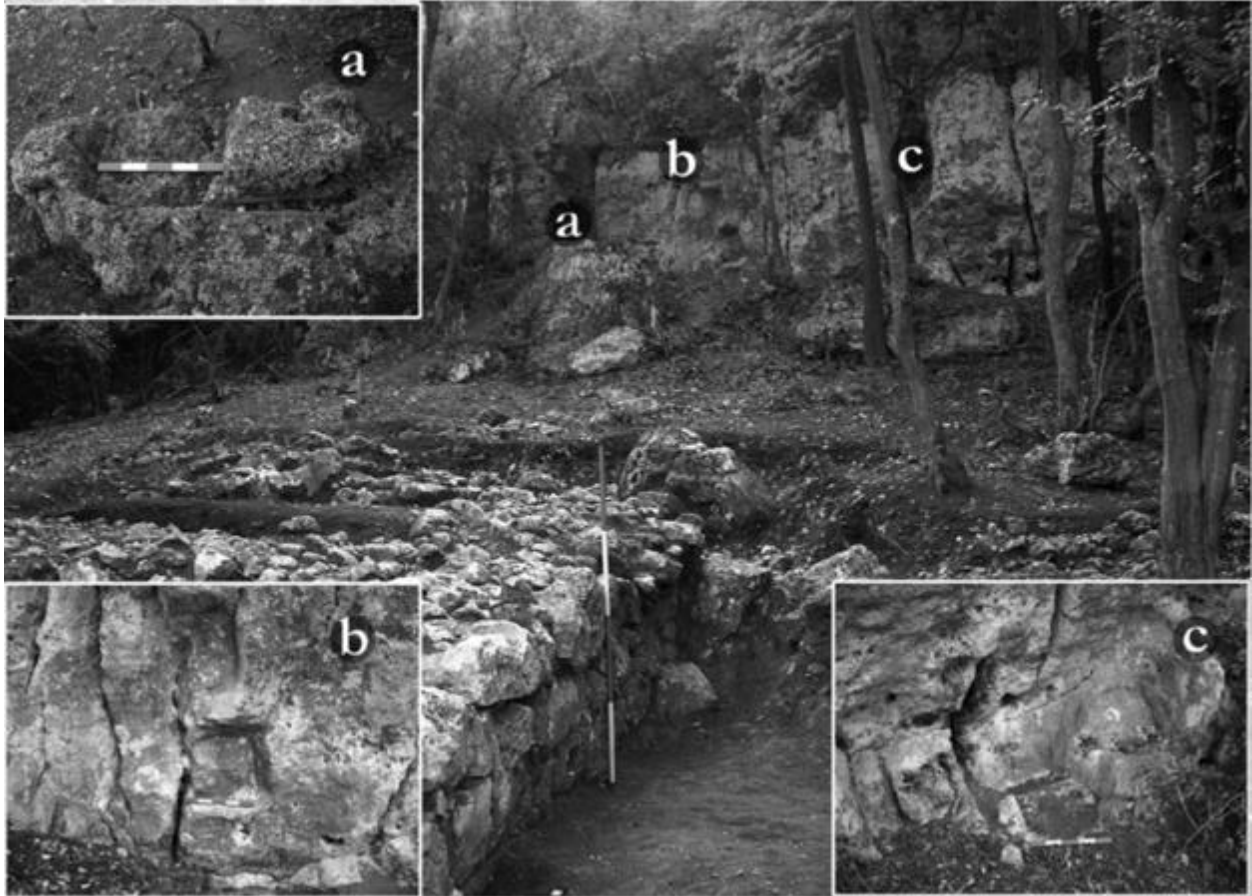


Figure 2.10: Diateichisma 3 (front) with the quarry in the background and details from the quarry (a-c)

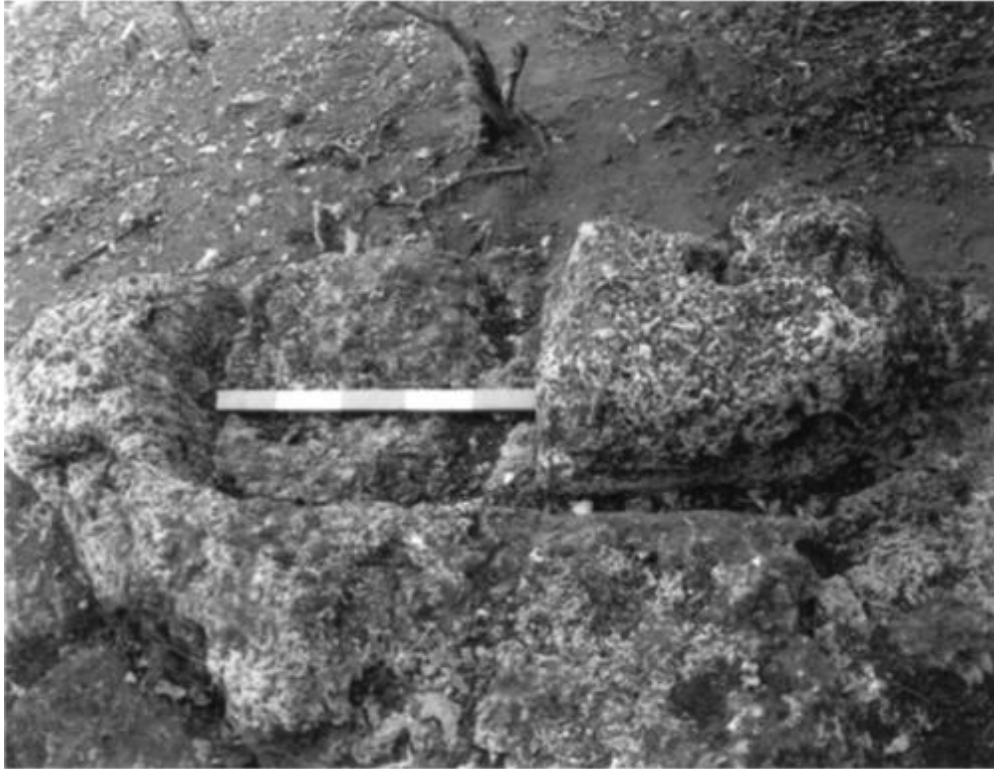


Figure 2.11: (Quarry III, detail) A block prepared for extraction



Figure 2.12: (Quarry III, detail) Beds from extracted blocks



Figure 2.13: (Quarry III, detail) Bed from an extracted block



Figure 2.14: Platform or ramp in quarry III. View from the south



Figure 2.15: Platform or ramp in quarry III. View from the north

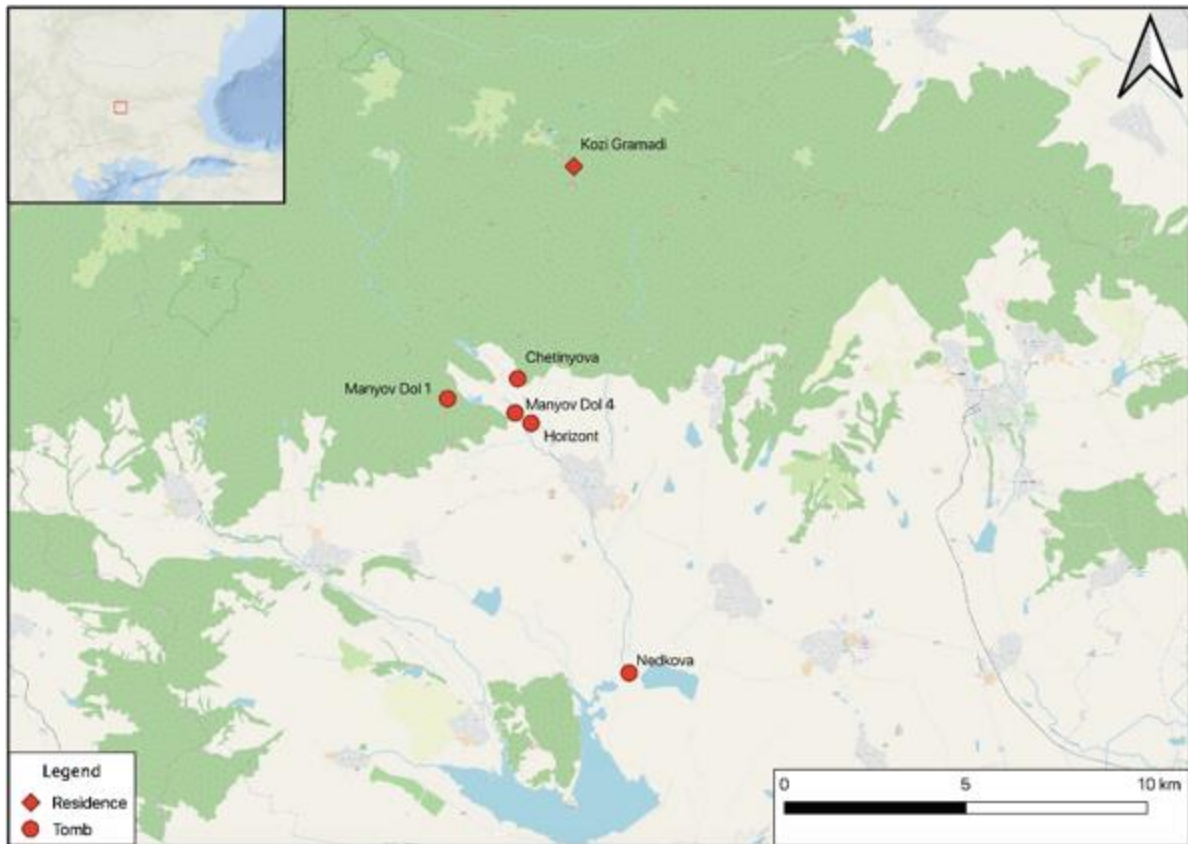


Figure 2.16: Map of the location of Kozi Gramadi residence in relation to the Starossel/Hissar region tombs



Figure 2.17: The Kozi Gramadi quarry. Rock with grooves in it



Figure 2.18: The Kozi Gramadi quarry. Bedrock with grooves and trenches in it



Figure 2.19: The Kozi Gramadi quarry. Step-like beds of quarried blocks in the bedrock showing that the blocks were extracted in stages

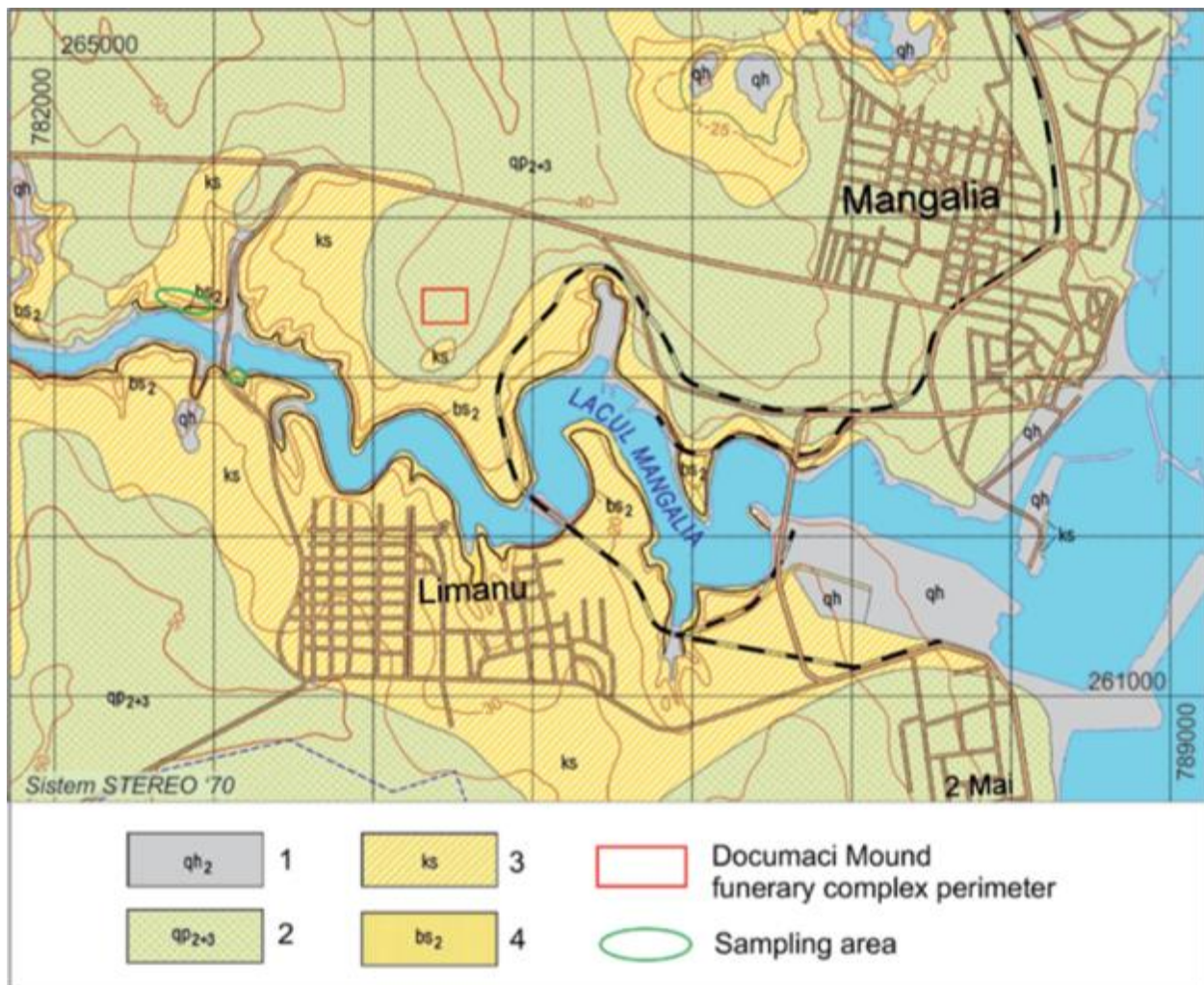


Figure 2.20: Geological map of the area around the Documaci (77) tumulus, indicating the locations from where samples were taken. 1: Holocen (Eluvia, colluvia, swamp sediments, beach sands and gravels, technogenic deposits); 2: Middle and Upper Pleistocene (Loesses with fossil soils intercalations); Cotu Vaili Formation: 3: Kersonian (Fine limestones, sometimes lumachellic, with small-sized maetra (*Mactra caspica*), karstified and pigmented with red iron hydroxides – Upper Limestones); 4: Upper Bessarabian (friable limestones and lumachellic limestones with small cardia; white micritic limestones with rhizolites; fragile calcarenites with *Nubecularia* and small gastropods)



Figure 2.21: Map of the location of the Vetren (1) tomb and relevant modern-day settlements in its vicinity

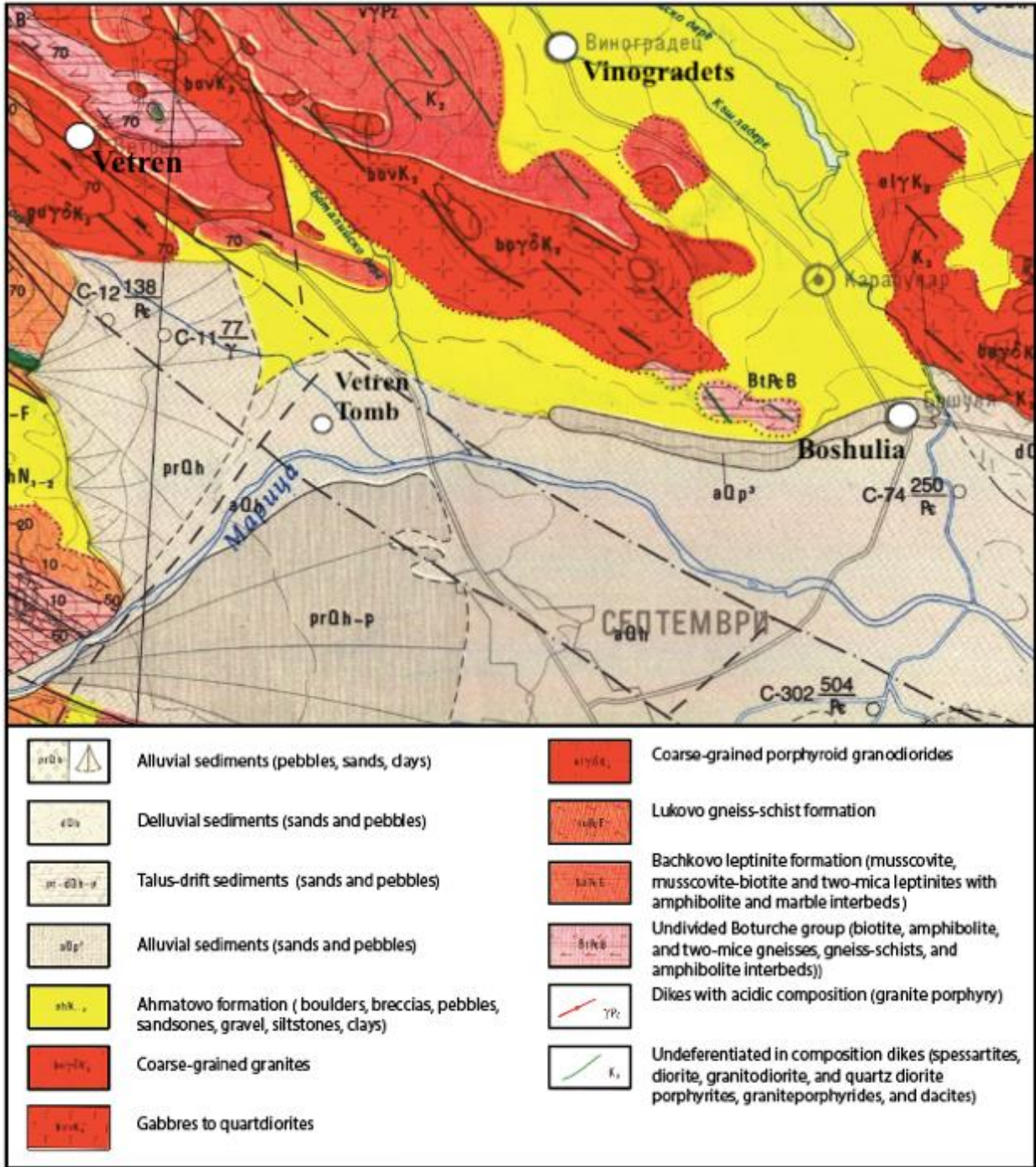


Figure 2.22: Geological map of the area around the Vetren (1) tomb

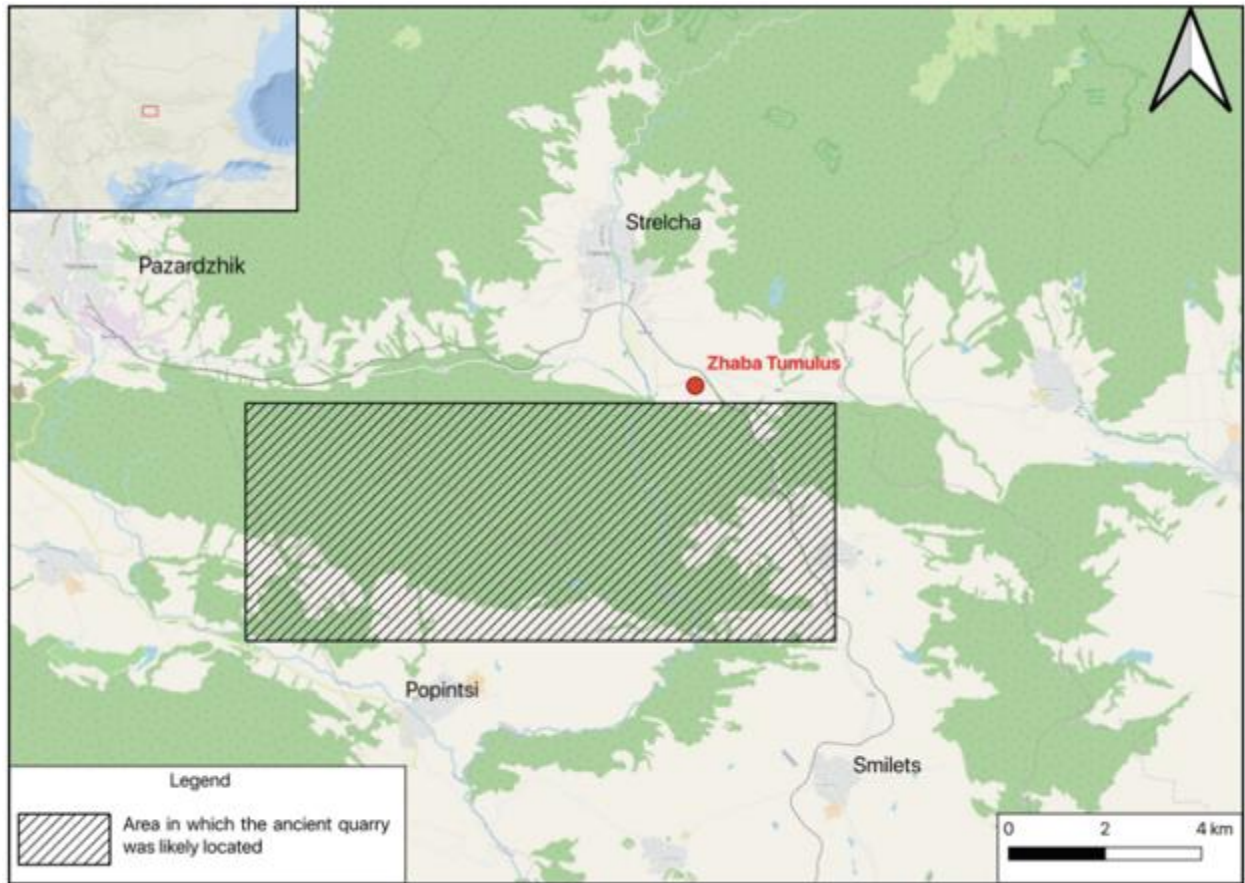


Figure 2.23: Map of the location of the Zhaba (3) tomb, relevant modern-day settlements in its vicinity, and the area in which the ancient quarry was likely located

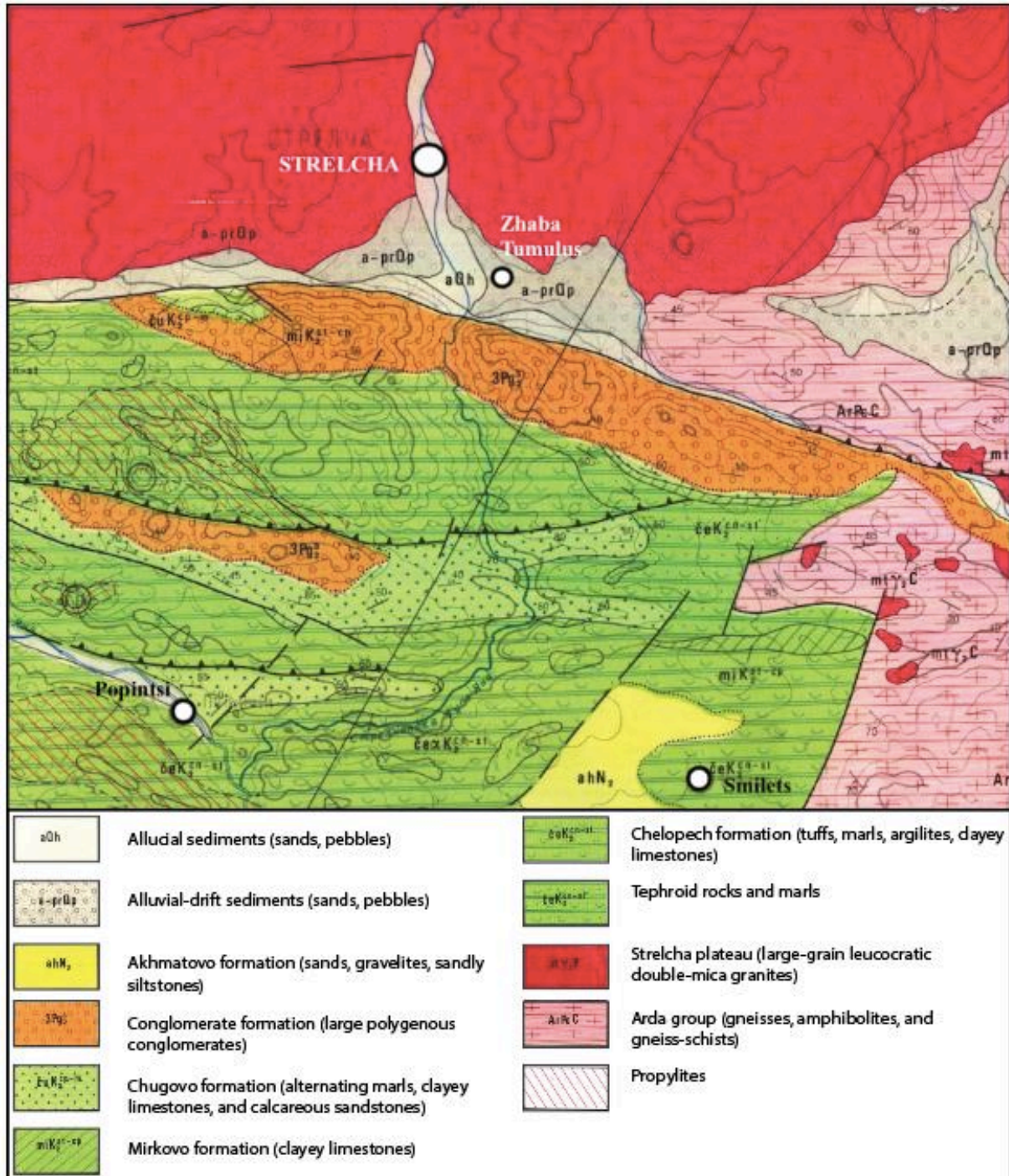


Figure 2.24: Geological map of the area around the Zhaba (3) tomb

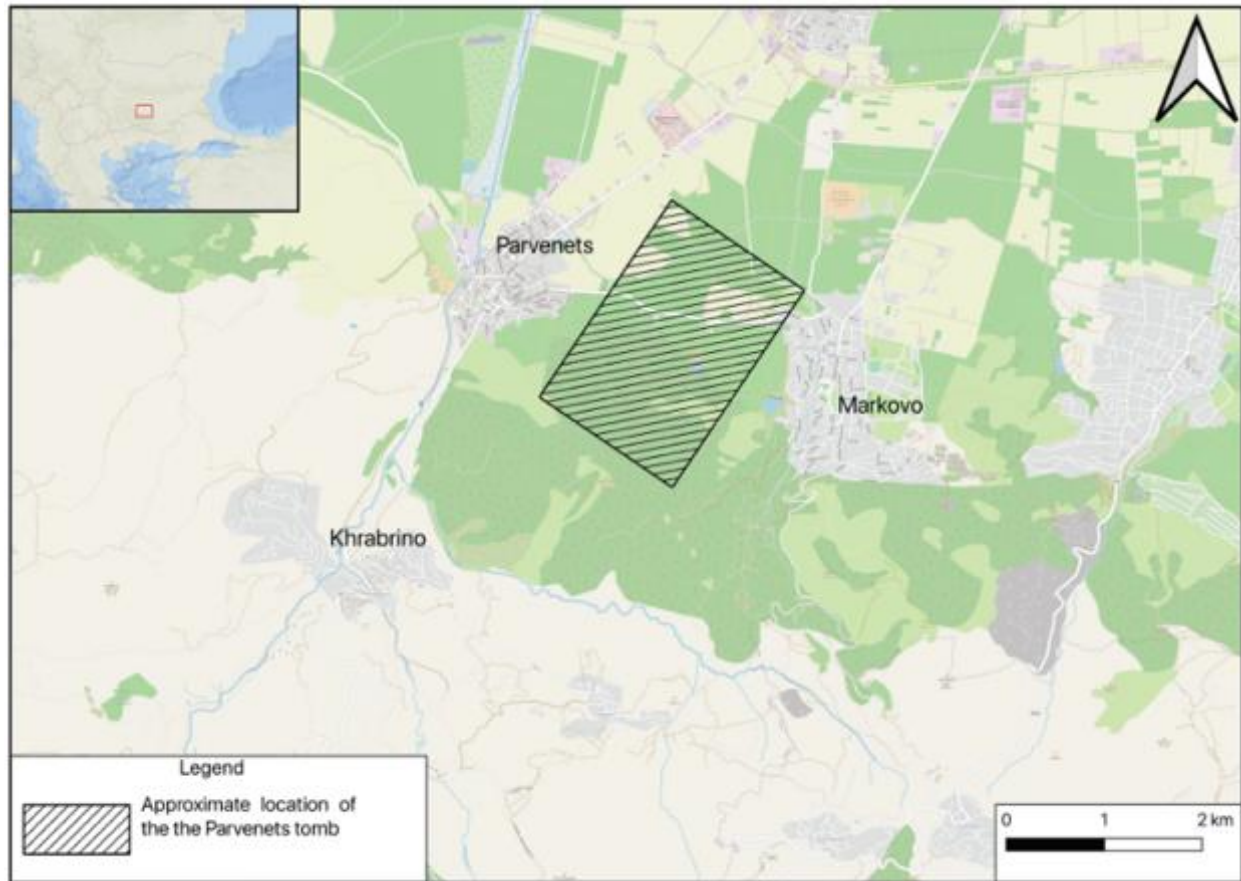


Figure 2.25: Map showing the approximate location of the Parvenets **(11)** tomb as well as relevant modern-day settlements in its vicinity

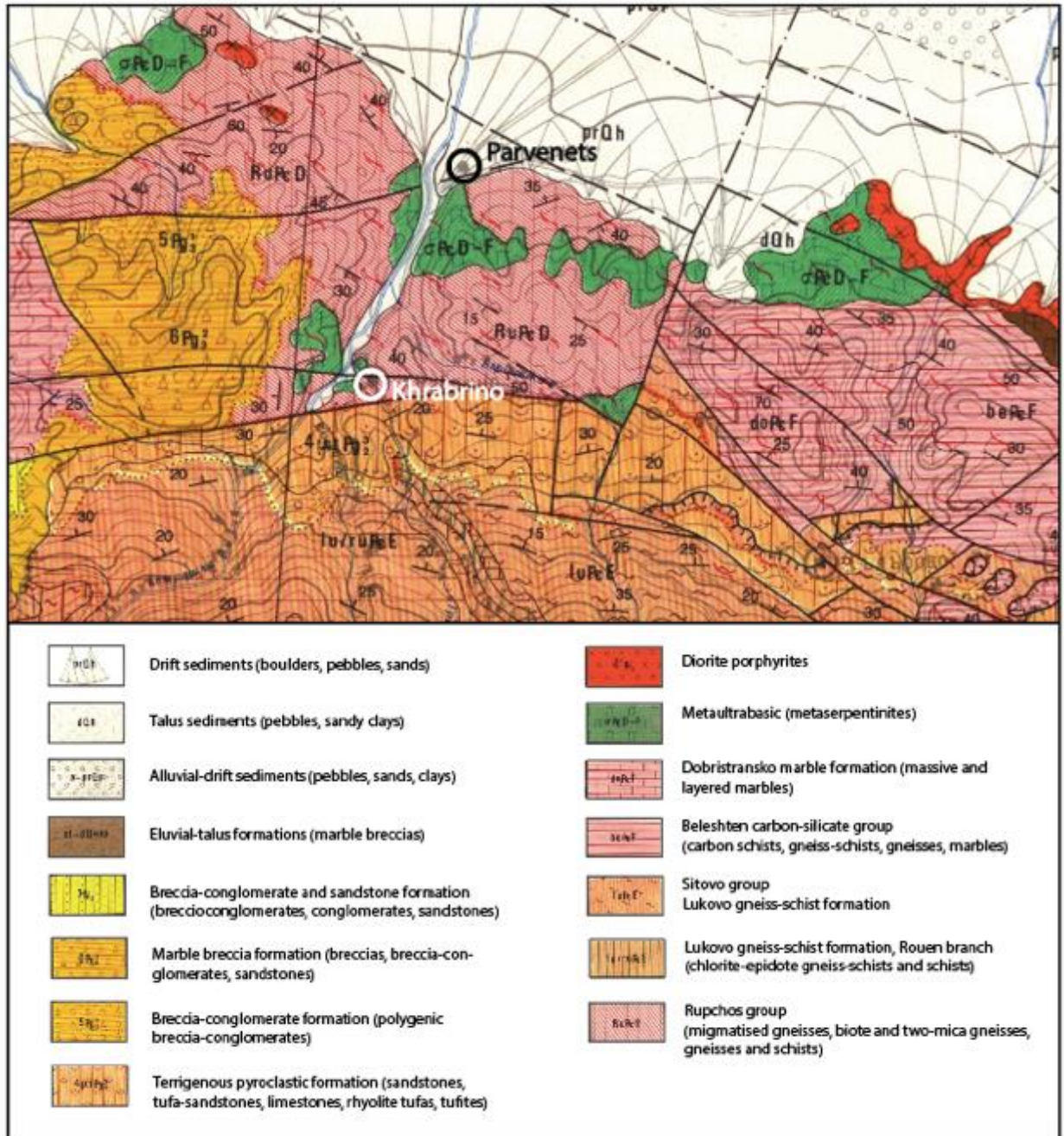


Figure 2.26: Geological map of the area around the Parvenets (11) tomb

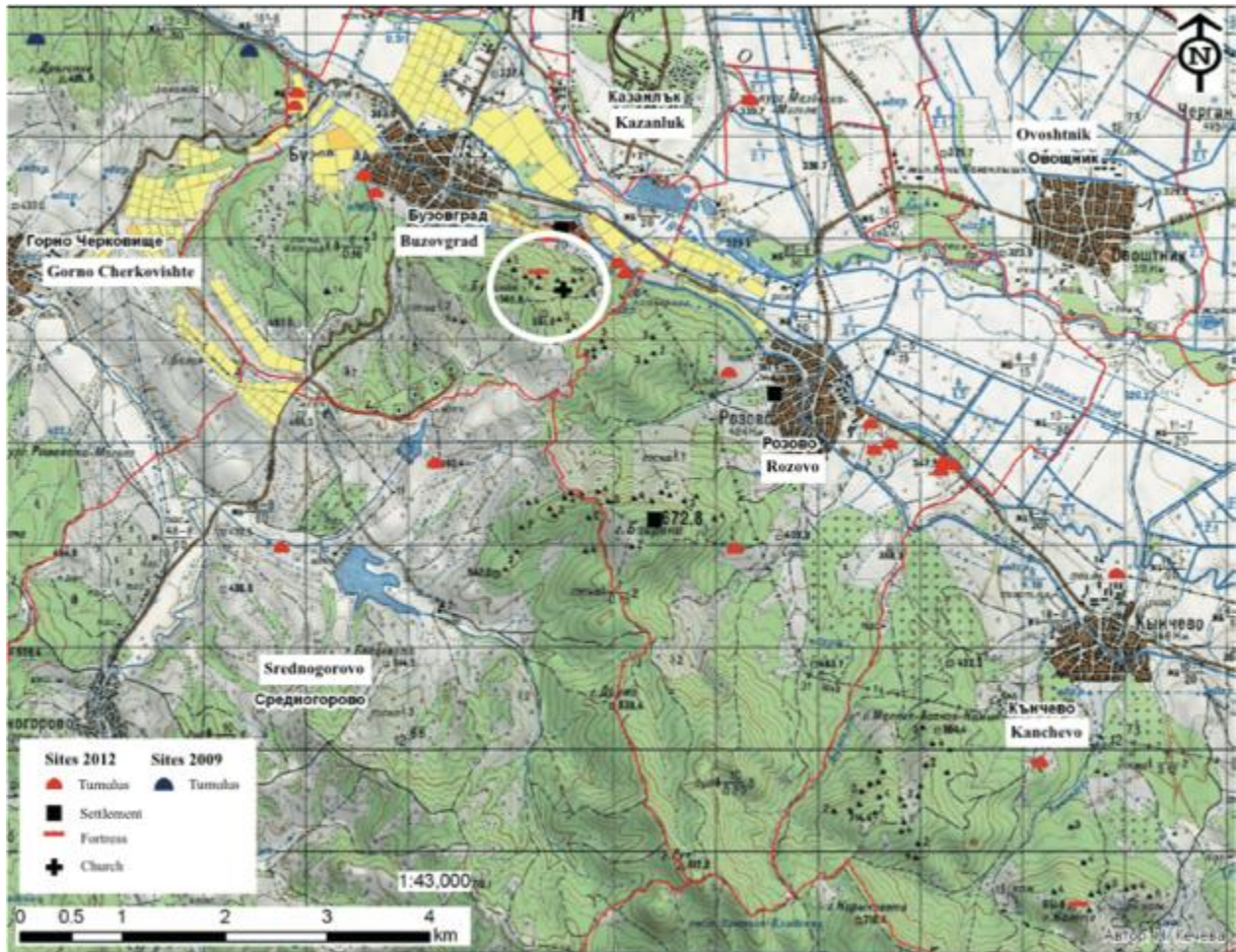


Figure 2.27: Map of a portion of the Kazanluk valley highlighting the location of the Buzovo Kale fortress and a medieval church near it



Figure 2.28: Map of a portion of the Kazanlak valley highlighting the location of the Buzovgrad (32) tomb and the Buzovo Kale fortress

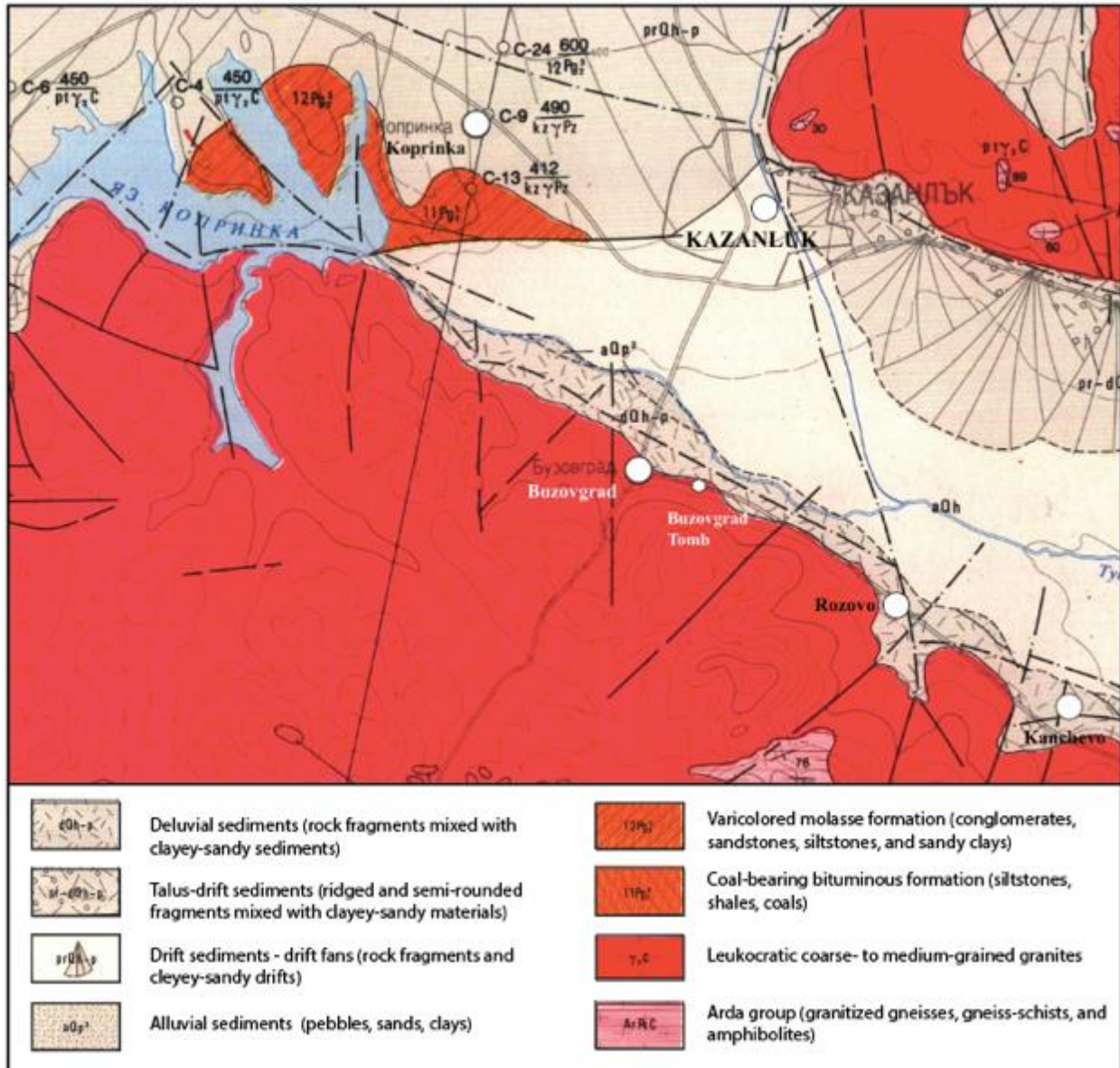


Figure 2.29: Geological map of a portion of the Kazanluk valley, showing the geology of the area around the Buzovgrad (32) tomb

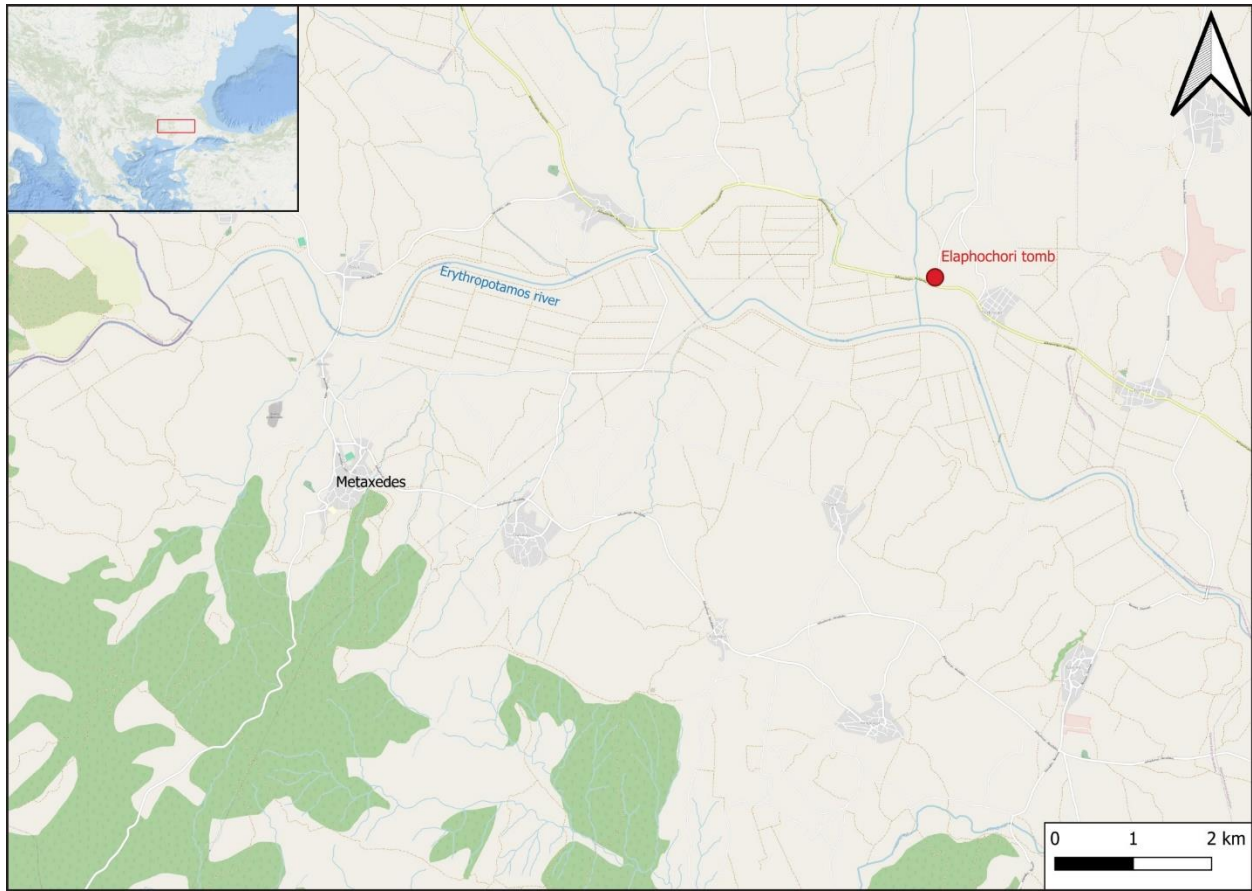
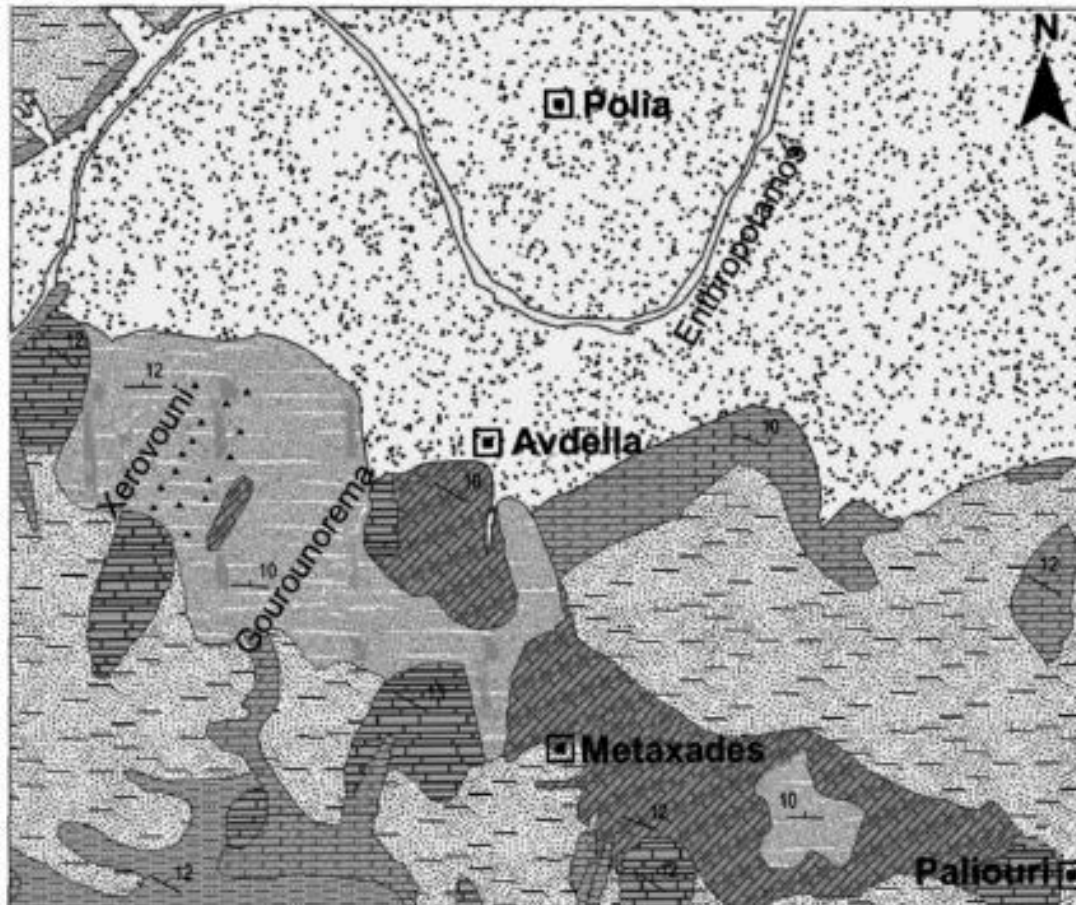
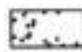





Figure 2.30: Map indicating the location of the Elaphochori (**50**) tomb in relation to Metaxedes



### LEGEND

-  Holocene fluvio-terrestrial formations
-  Plio-Pleistocene formations
-  Limestones
-  Marly limestones
-  Volcaniclastic tuffs
-  Sandstones
-  Siltstones
-  15 Strike and dip of beds
-  Sample location
-  Village

0 300 600 m



Figure 2.31: Geological map of the Metaxades area

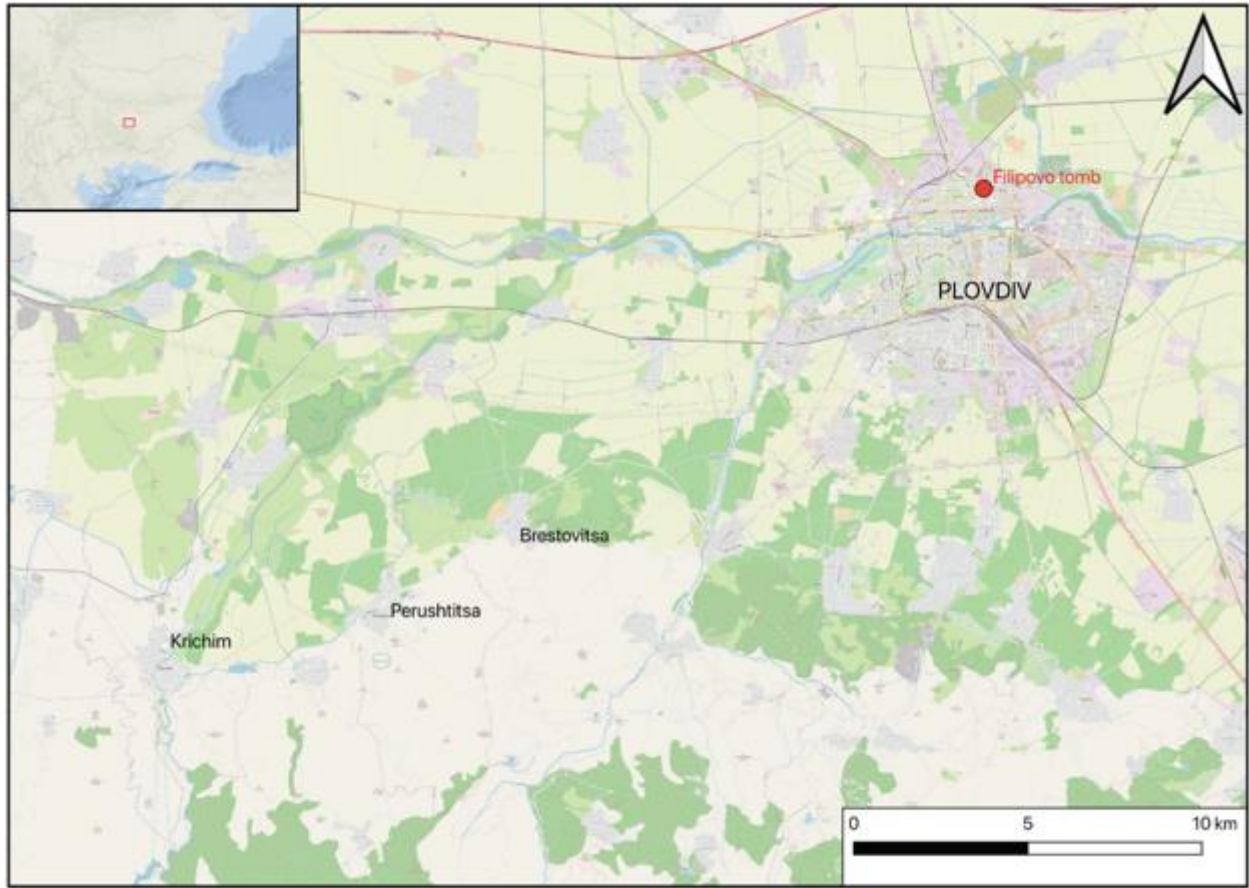


Figure 2.32: Map of the location of the Filipovo (**10**) tomb, relevant modern-day settlements in its vicinity

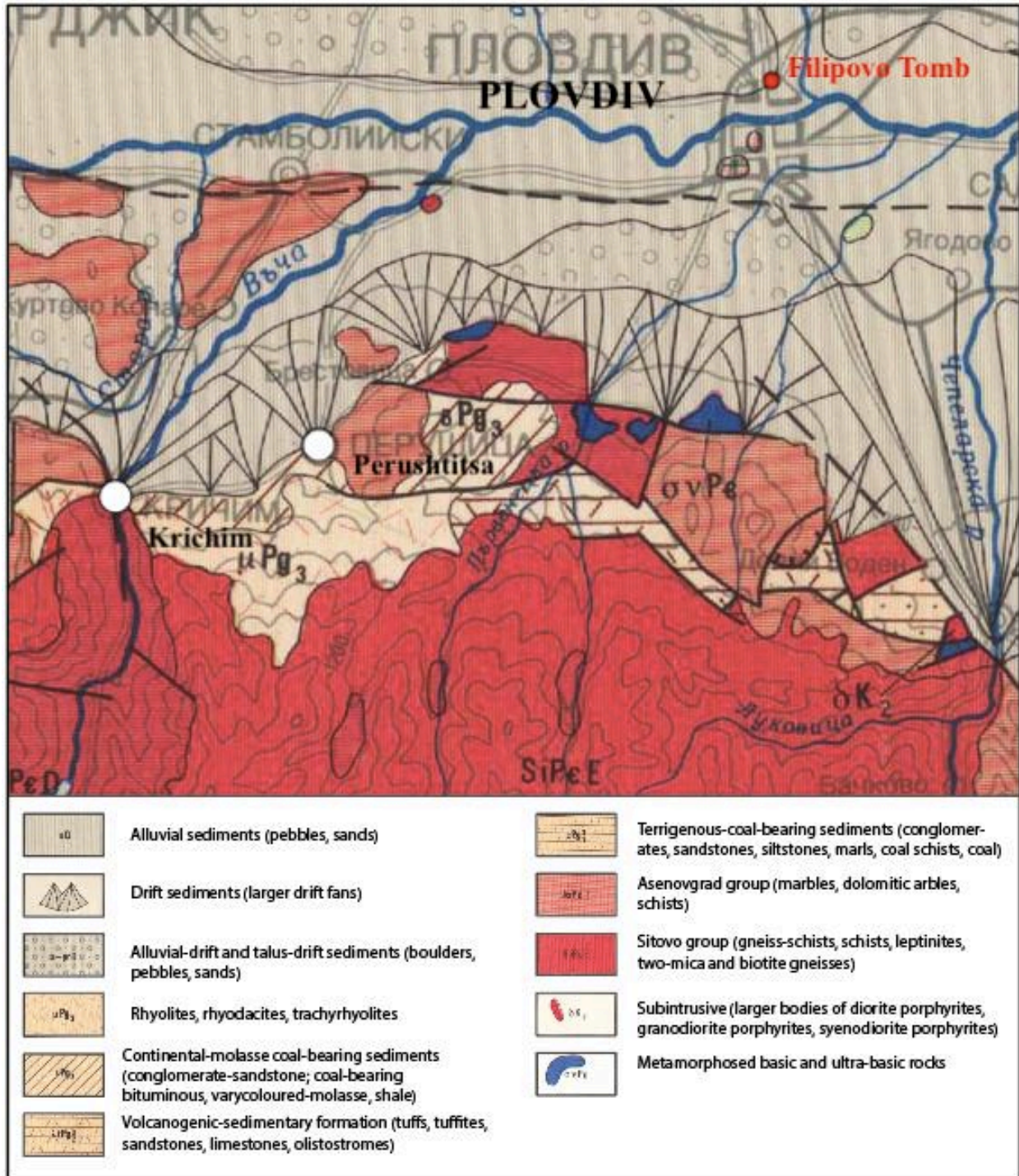


Figure 2.33: Geological map of the area around the Filipovo (10) tomb



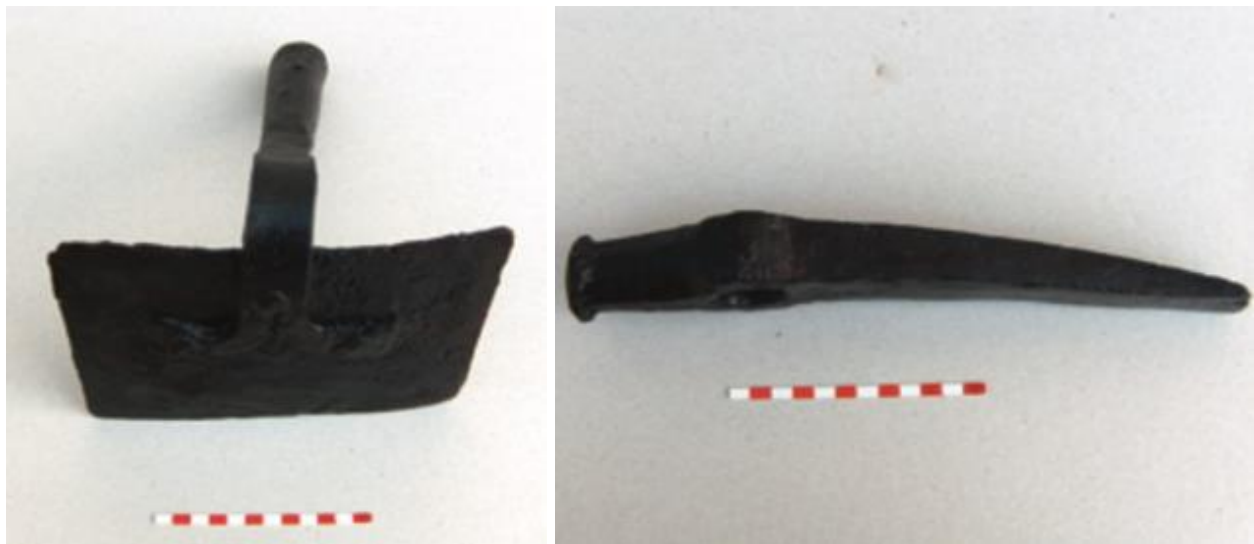
Figure 2.34: Map of the locations of Khrabrino and Kralevo



Figure 2.35: The lead plumb found outside the western wall of the burial chamber of the Sveshatri (69) tomb



Figure 2.36: Lead plumb found at the Kozi Gramadi fortified residence



Figures 2.37 and 2.38: Hoe and pickaxe from Momina tumulus



Figure 2.39: Hoe and pickaxe from Momina tumulus *in situ*



Figure 2.40: Fragment of a saw from Seuthopolis



Figure 2.41: Chisels from Seuthopolis



Figure 2.42: The mudbrick construction at the entrance of the Filipovo (10) tomb



Figure 2.43: The façade and entrance to the dromos of the Gagovo (68) tomb at the time of excavation (view from the exterior)



Figure 2.44: The façade and dromos of the Gagovo (68) tomb in 2019 (view from the interior)



Figure 2.45: Section of the mudbrick construction of the dromos/façade of the Gagovo (68) tomb in 2019



Figure 2.46: One of the few available images of the Rhuzhitsa tomb at the time of excavation. View of the dromos and entrance. The mudbrick is difficult to discern

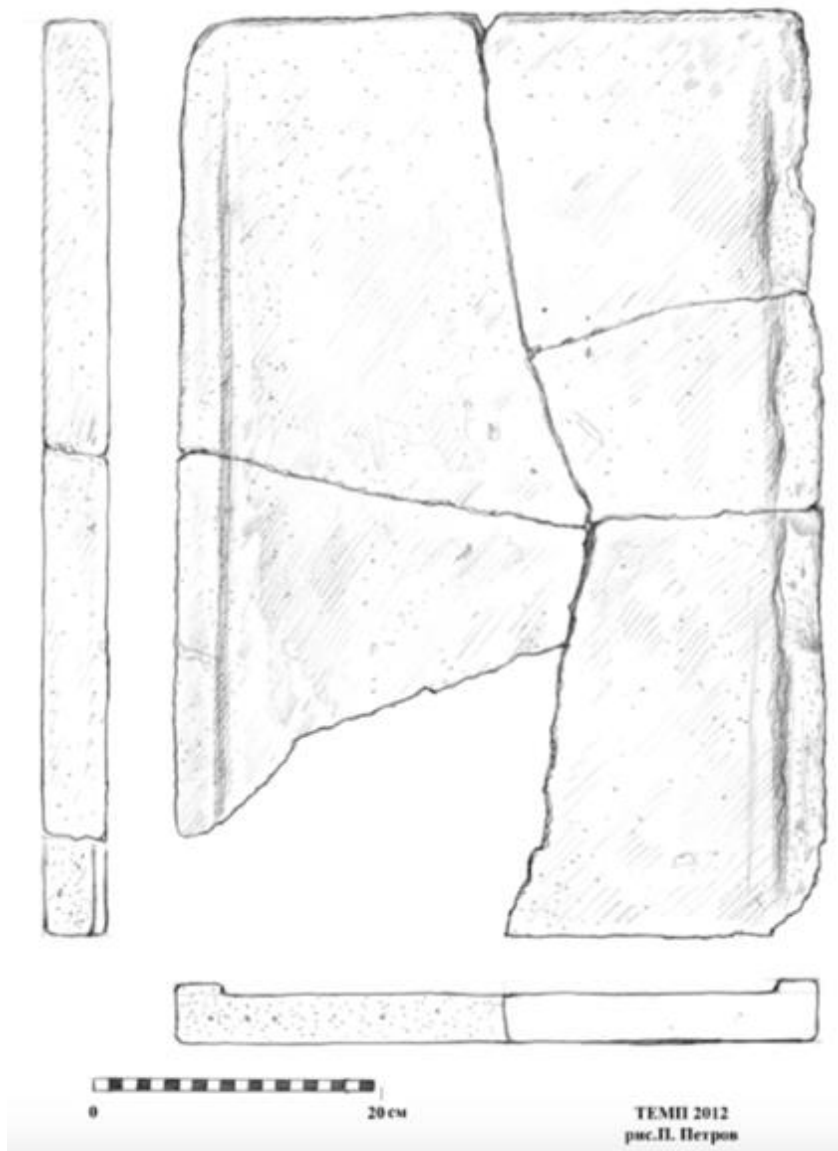


Figure 2.47: A Corinthian-type pan tile from the Shushmanets (14) tomb

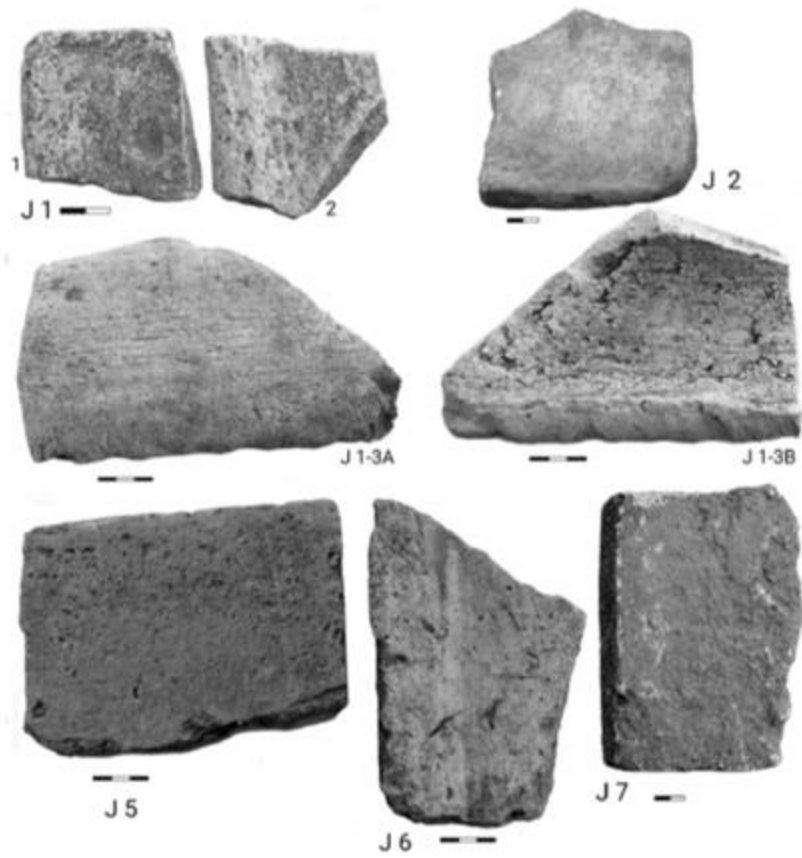


Figure 2.48: Rooftile fragments from the Documaci (77) tomb



Figure 2.49: Roof tiles excavated in the dromos of the Grifoni (16) tomb



Figure 2.50: Preserved portion of the cover structure over the Grifoni (16) tomb, featuring roof tiles



Figure 2.51: Drawing of the preserved portion of the cover structure of the Grifoni (16) tomb, featuring roof tiles



Figure 2.52: Location of Seuthopolis



Figure 2.53: A brick well from Seuthopolis



Figures 2.54 and 2.55: Bricks (rectangular (L) and sectional/trapezoidal (R)) from Seutopolis and its necropolis, now at the Kazanluk Museum “Iskra”

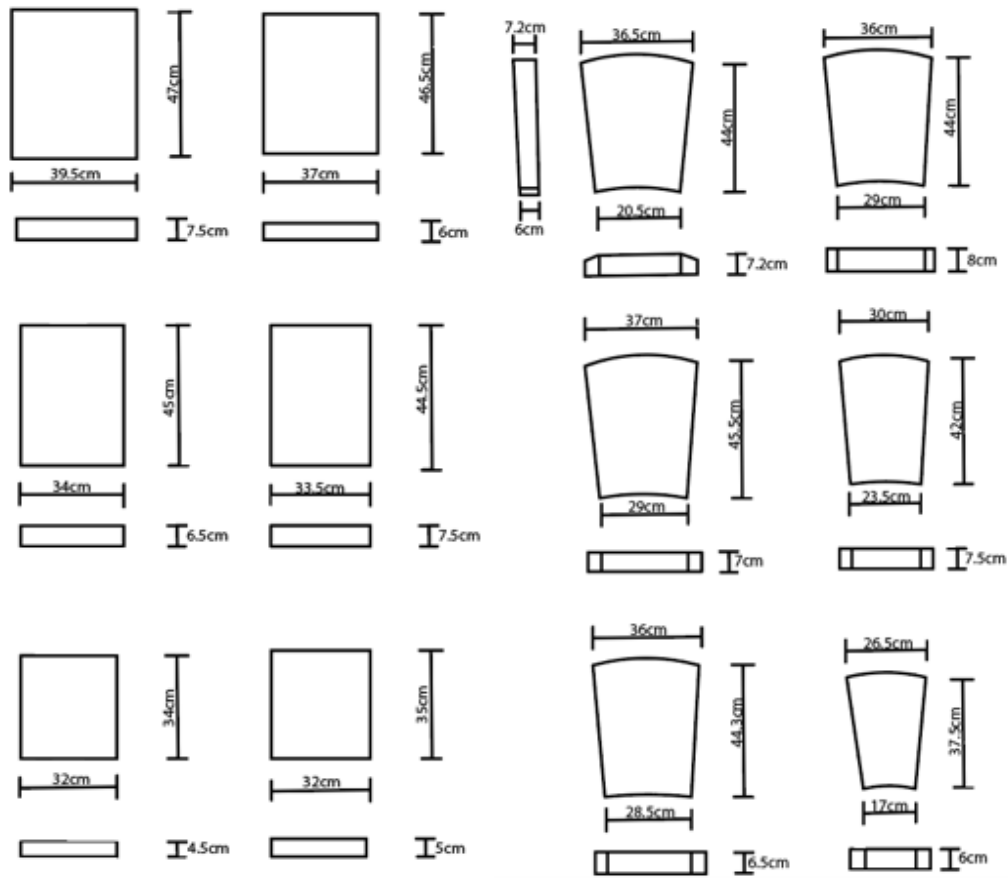
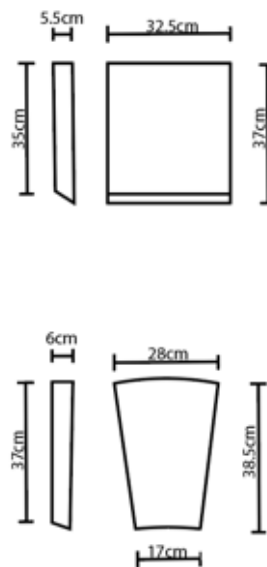


Figure 2.56: Sample rectangular (L) and trapezoidal/sectional (R) bricks from Seuthopolis and its necropolis



Figures 2.57 and 2.58: Bricks from Seuthopolis with a section under an angle



Figure 2.59: The tomb (21) in tumulus 4 in the necropolis of Seuthopolis. Sectional and rectangular bricks are visible in situ



Figures 2.60 and 2.61: The two tombs in Koprinka tumulus 2 (20), made of reused bricks

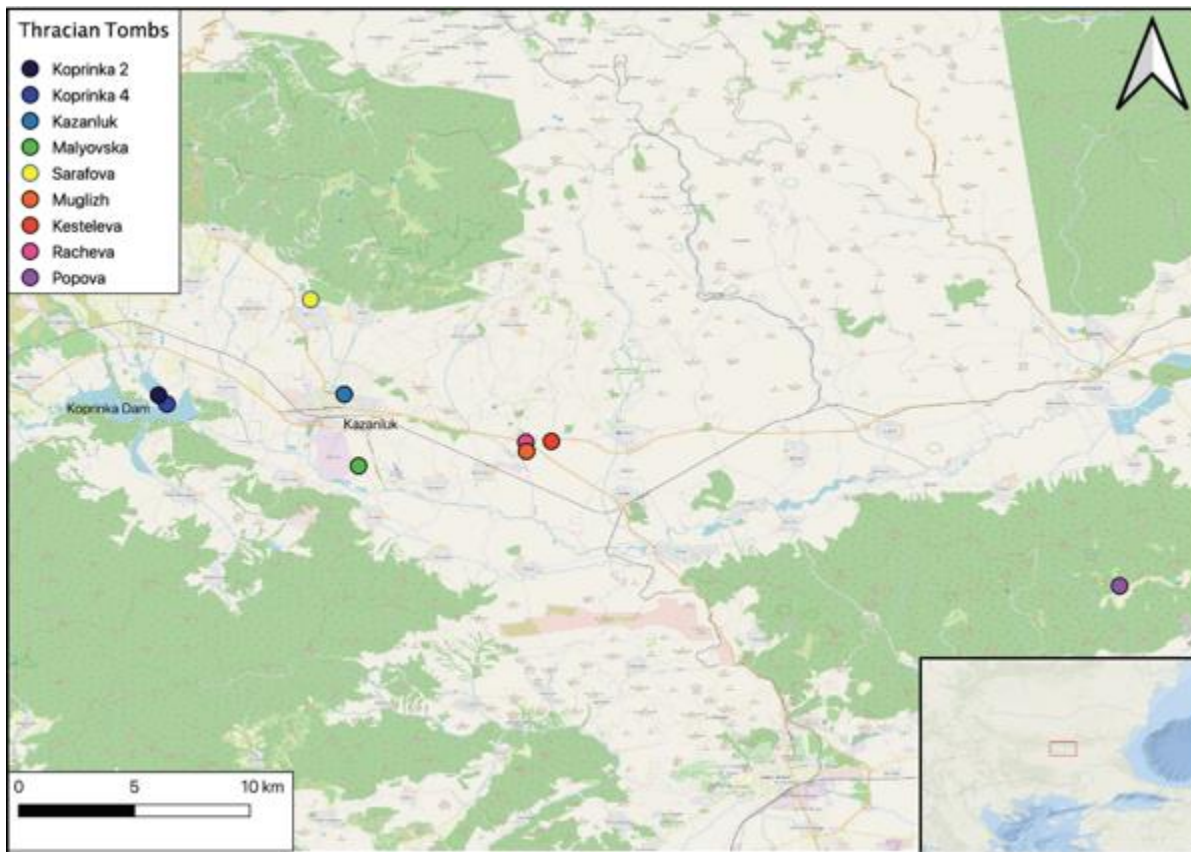


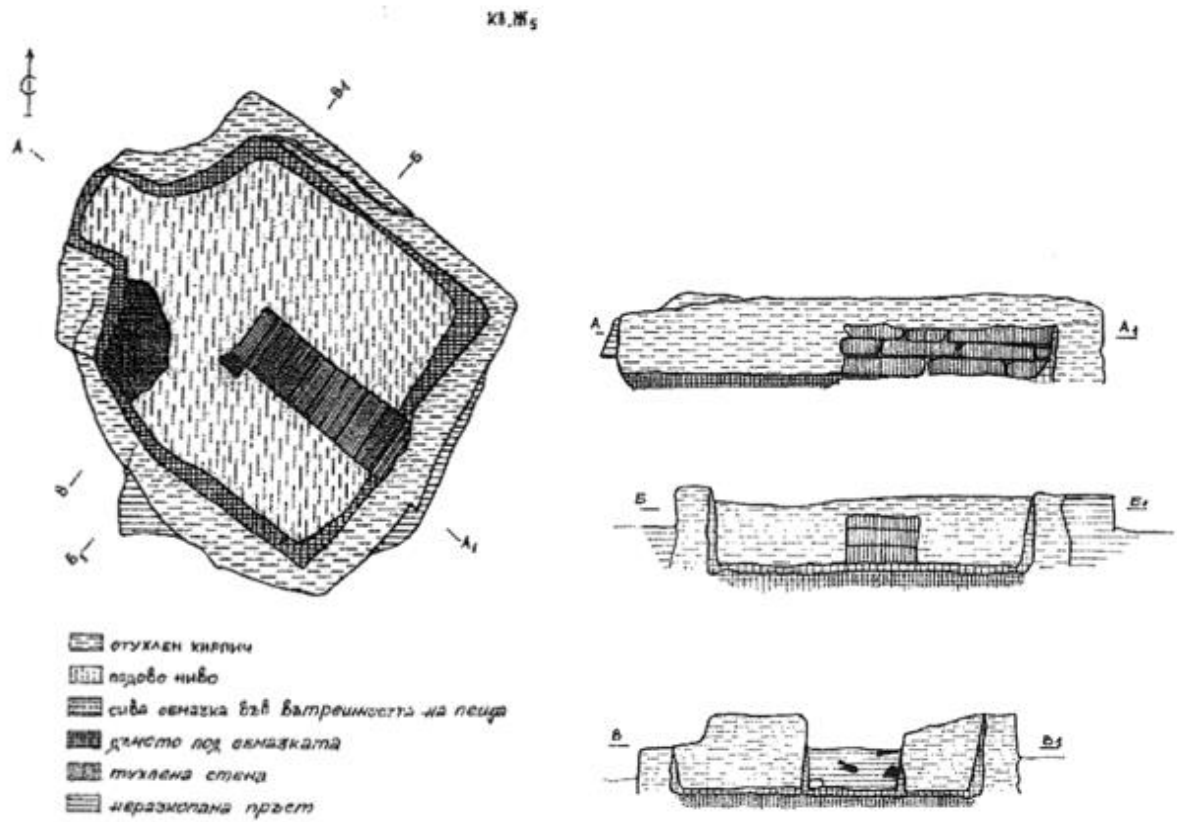
Figure 2.62: Map of the location of all brick-built tombs



Figure 2.63: Map of the settlements in which pre-Roman kilns for architectural ceramics were found



Figure 2.64: The Pistiros kiln at the time of excavation



Figures 2.65 and 2.66: Plan and cross-sections of the Pistiros kiln. Legend: 1) fired mudbrick; 2) floor level; 3) grey plaster on the kiln's interior; 4) bottom layer under the plaster; 5) brick wall; 6) unexcavated area

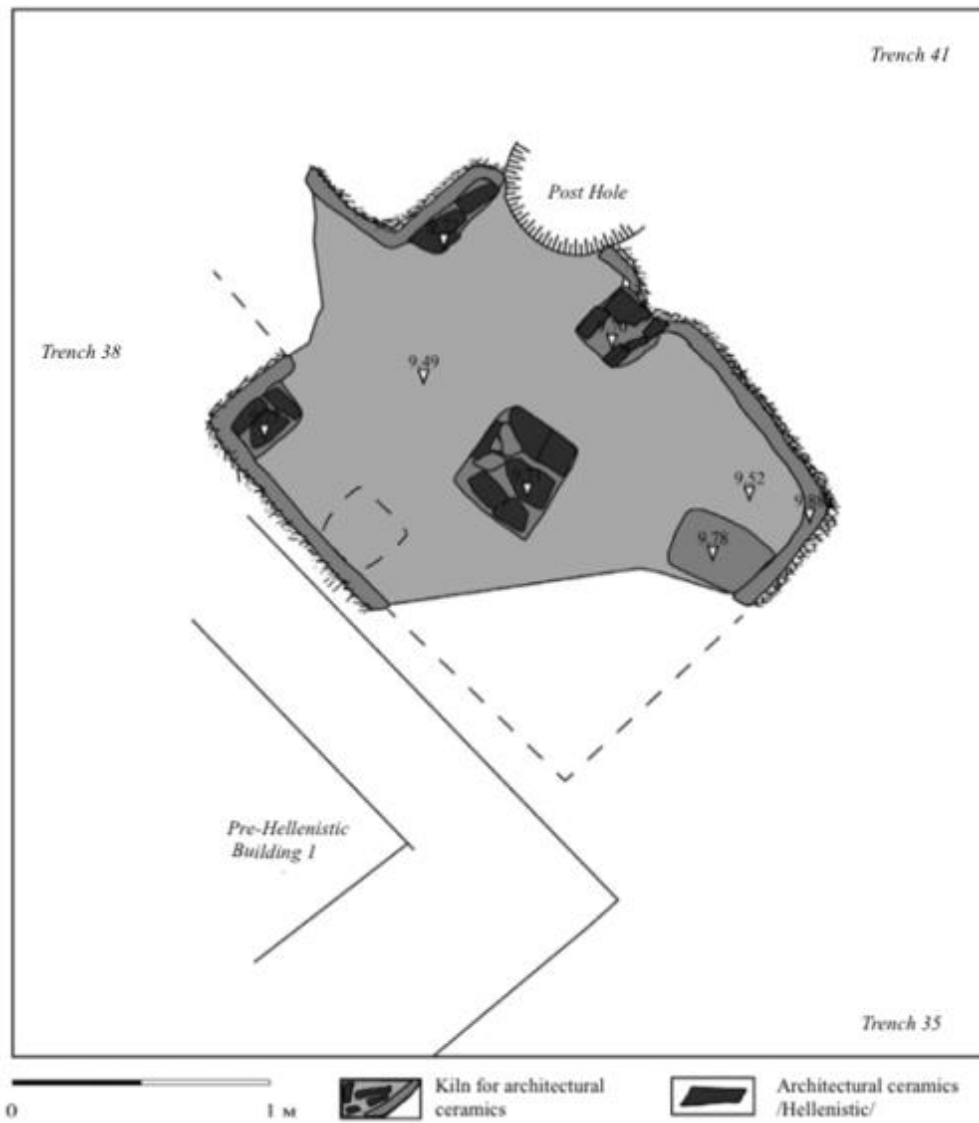


Figure 2.67: Plan of the Hrisosotira kiln



Figure 2.68: Tile-maker at Corigliano loading a kiln. It is possible that the Thracian craftsmen loaded the kilns with tile and brick in a similar manner in order to minimize production time

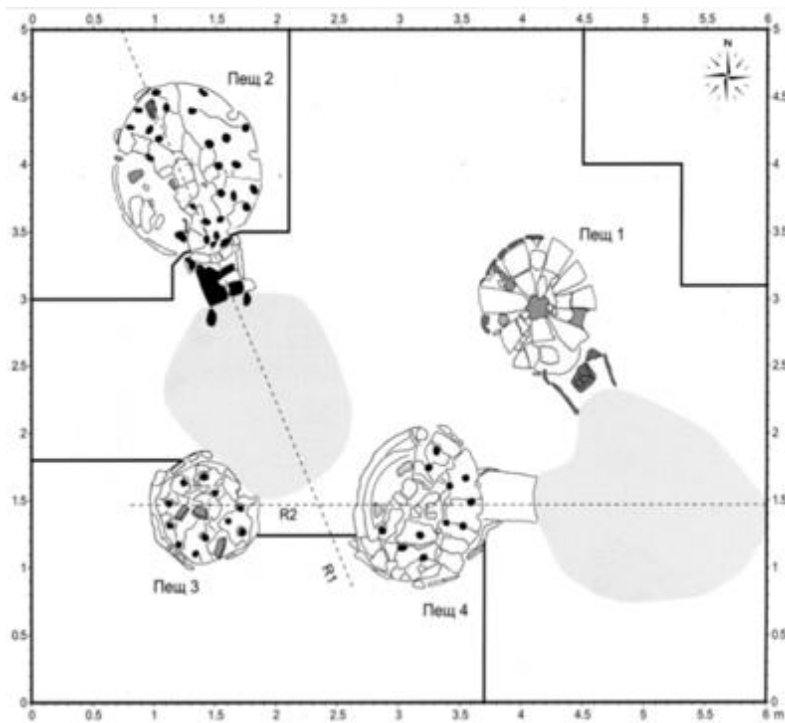


Figure 2.69: Plan of the production centre at Halka Bunar



Figure 2.70: Photograph of the two kilns at the Chirpan production centre



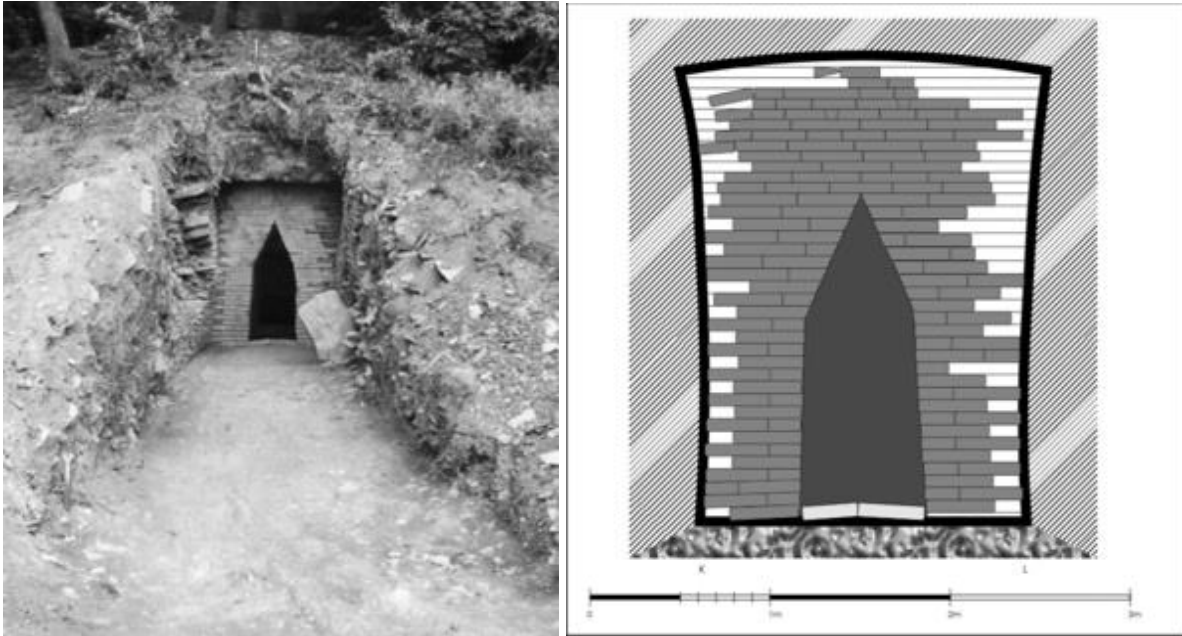
Figures 2.71 and 2.72: Stone lintels of the entrances to the burial chambers of Sarafova (L) and Kazanluk (R) tombs



Figures 2.73 and 2.74: Stone lintels of the entrances to the burial chambers of the Kesteleva (29) (L) and Popova (33) (R) tombs



Figure 2.75: Keystone from the Racheva (30) tomb



Figures 2.76 and 2.77: Photo (L) and drawing (R) of façade of the Popova (33) tomb



Figures 2.78 and 2.79: Main entrances to the (in order) Sarafova (26) and Kazanluk (22) tombs, made entirely of brick

CHAPTER 3

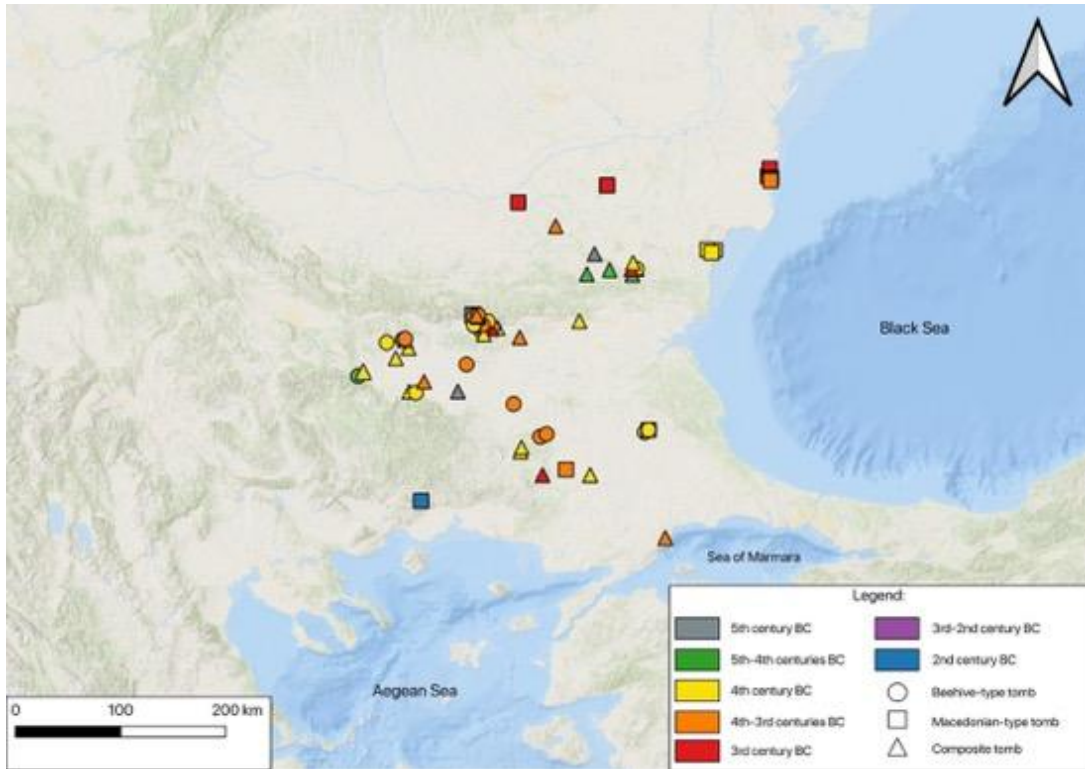


Figure 3.1: Map of all tombs, displayed by plan type and time period

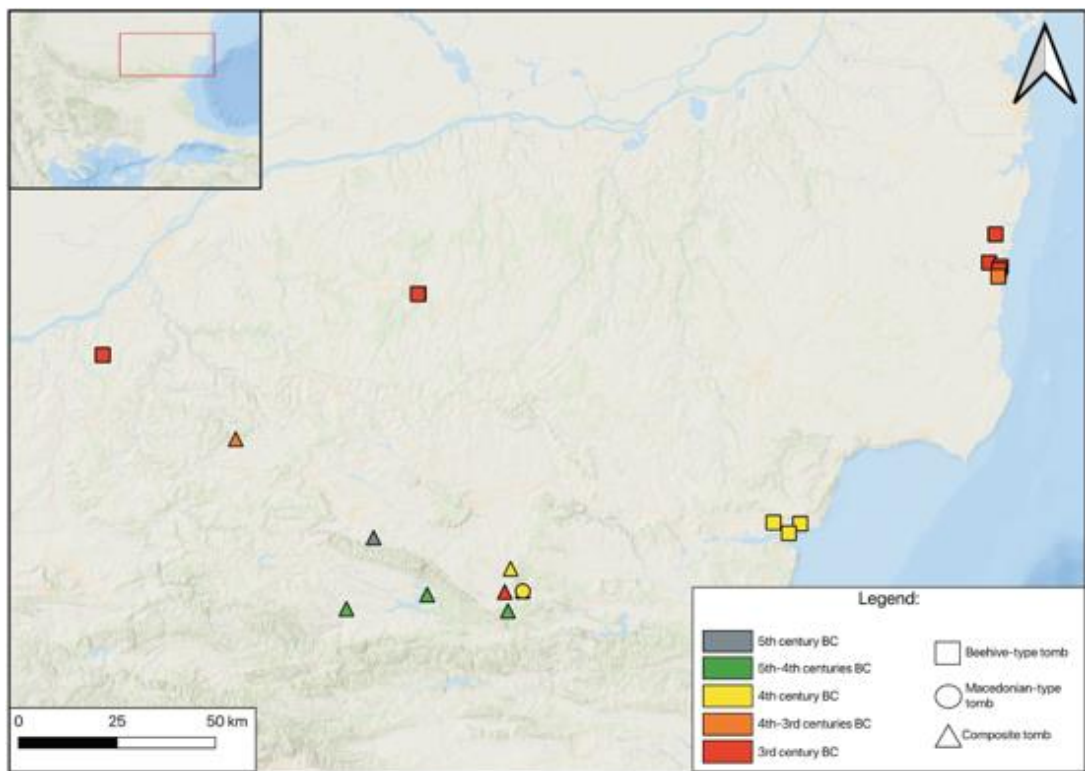


Figure 3.2: Tomb distribution (by type and time period) in north-eastern Thrace

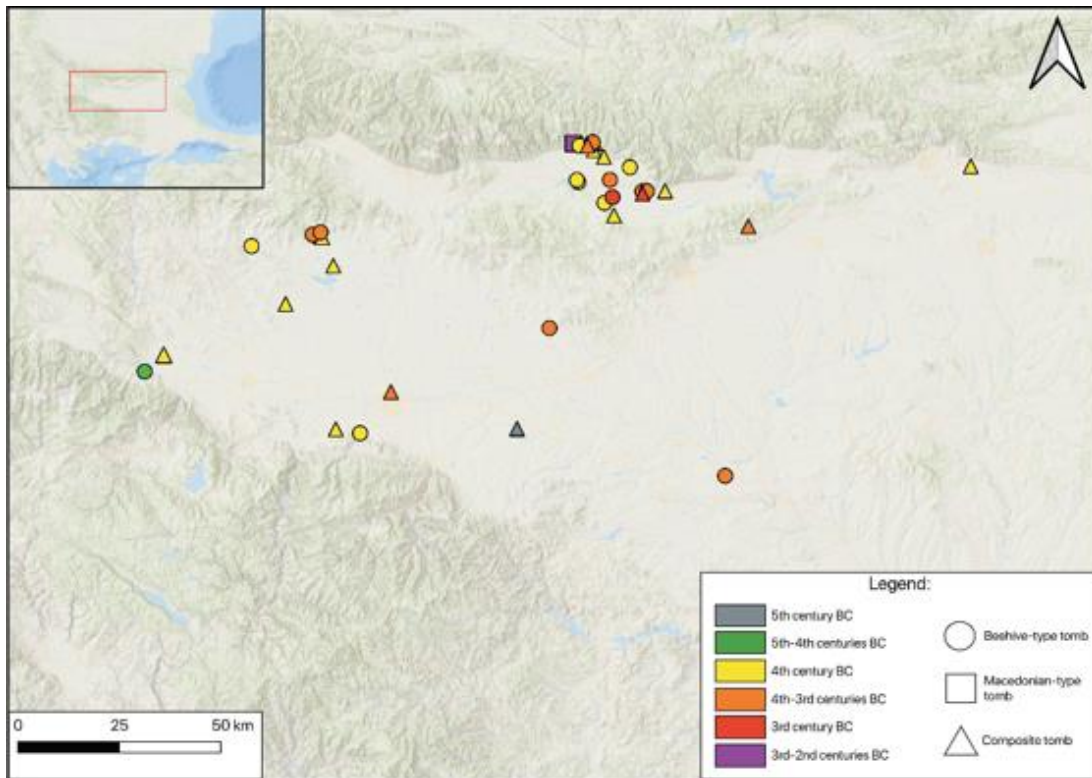


Figure 3.3: Tomb distribution (by type and time period) in central Thrace

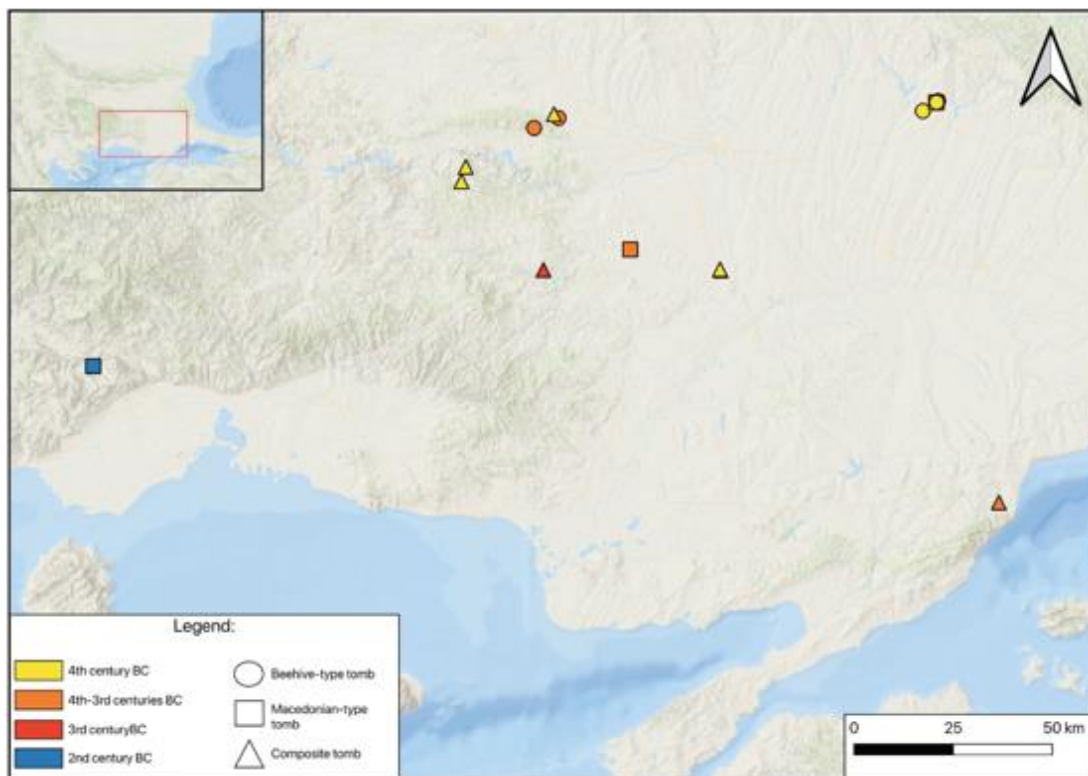


Figure 3.4: Tomb distribution (by type and time period) in southern and south-eastern Thrace



Figures 3.5-3.6: Views of the entrance and interior of the dromos of the Naip (49) tomb



Figure 3.7: The façade of the Borovo (72) tomb



Figures 3.8-3.10: View of the entrance and porch of the Vetren (1) tomb, showcasing the remaining stucco on the exterior



Figures 3.11-3.12: View of the remaining stucco on the exterior of the Shushmanets (14) tomb



Figure 3.13: Detail from the lid of the monolithic burial chamber of the Ostrusha (18) tomb, showing remnants of stucco



Figure 3.14: Metal rings used for holding the wings of the door of the burial chamber of the Mezek (41) tomb



Figure 3.15: Holes for the metal rings used for holding the wings of the door of the burial chamber of the Golyama Arsenalka (17) tomb



Figure 3.16: Detail from the interior of the tomb in tumulus 12 at Sboryanovo (70), showing the niche for the sliding door of the tomb



Figure 3.17: Detail from the interior of the tomb in tumulus 13 at Sboryanovo (71), showing the niches for the sliding door of the tomb



Figure 3.18: Detail from the interior of the Borovo (69) tomb, showing the upper niche for the sliding door of the tomb



Figure 3.19: Detail of the doorframe of the main entrance of the Zhaba (3) tomb



Figure 3.20: Detail of the doorframe of the main entrance of the Chetinyova (4) tomb

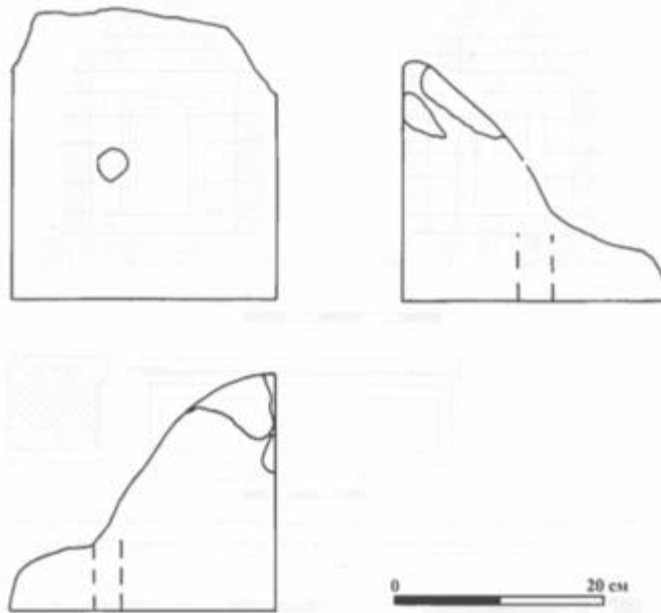


Figure 3.21: Drawing of the acroterion from the Kurt Kale (42) tomb



Figure 3.22: Detail of the façade of the Smyadovo (60) tomb, including its acroterion



Figure 3.23: The acroteria from the Ostrusha (18) tomb



Figure 3.24-3.25: Details from the painted decoration of the antechamber of the (copy of) Kazanluk (22) tomb, focusing on the vegetal motif on black background



Figure 3.26: Detail from the painted decoration of the antechamber of the Aleksandrovo (37) tomb, focusing on the vegetal motif on black background

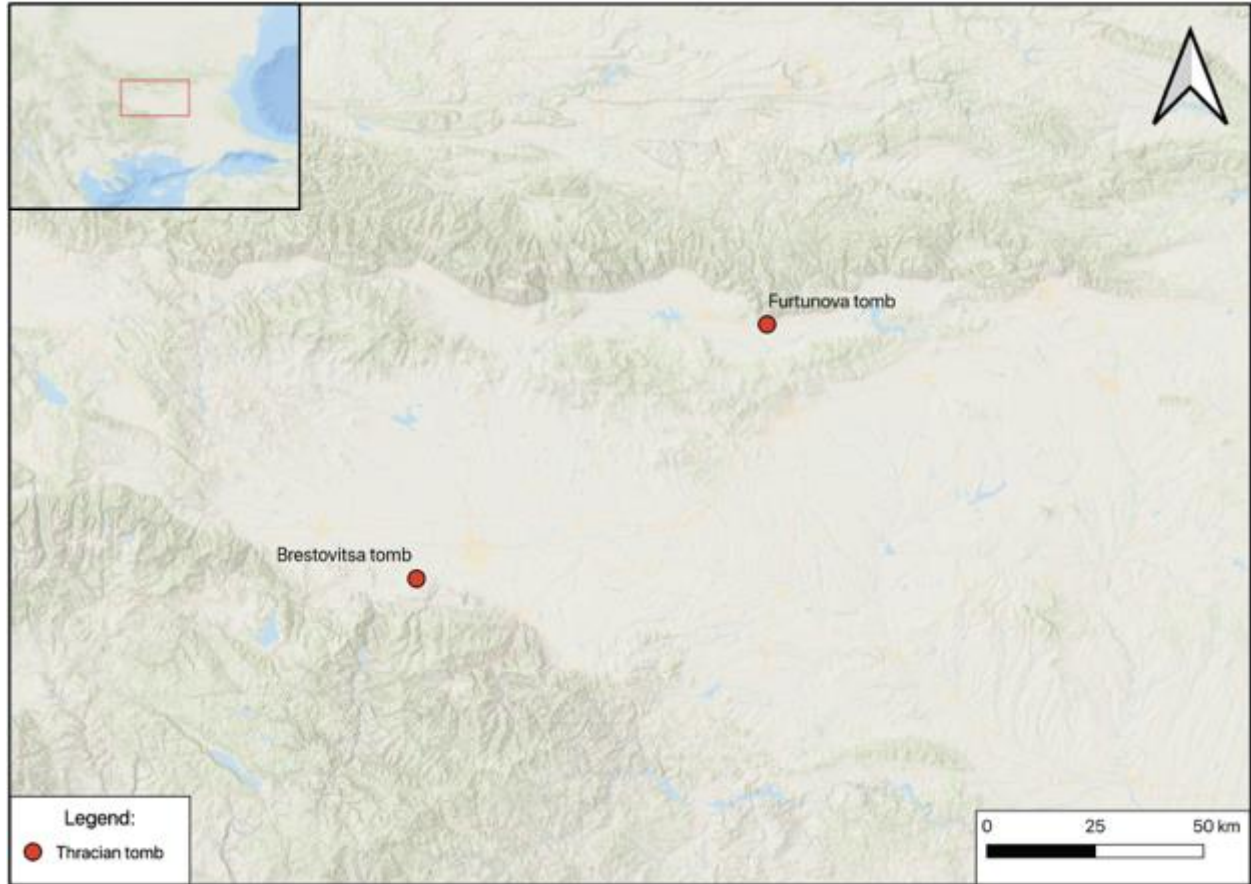


Figure 3.27: Map of the locations of the Brestovitsa (12) and Furtunova (31) tombs



Figure 3.28: View of the interior of the sarcophagus-like burial chamber of the Ostrusha (18) tomb, showcasing the holes used to attach the door



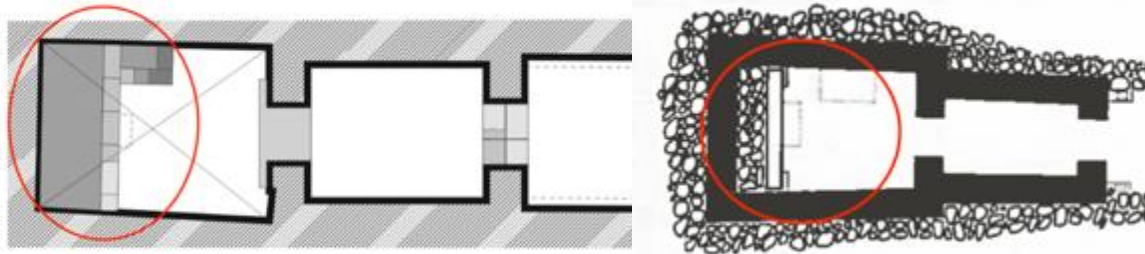
Figure 3.29: View of the entrance to the sarcophagus-like burial chamber of the Golyama Kosmatka (13) tomb, showcasing the holes used to attach the door



Figure 3.30: Detail from the burial chamber of the tomb in the Golyama Arsenalka (17) tomb



Figures 3.31-3.32: The funerary beds in the Popova (33) (L) and Muglzh (28) (R) tombs



Figures 3.33-3.34: Plans of the tombs in the Popova **33** (L) and Muglitzh **(28)** tombs, highlighting the placement of the funerary beds



Figure 3.35: Drawing of female portrait head from the Hall of Choral Dances on Samothrace



Figure 3.36: Drawing featuring the depiction of Demeter from the Bolshaya Bliznitsa tomb



Figure 3.37: Reconstruction drawing of the portrait of Demeter from the Bolshaya Bliznitsa tomb

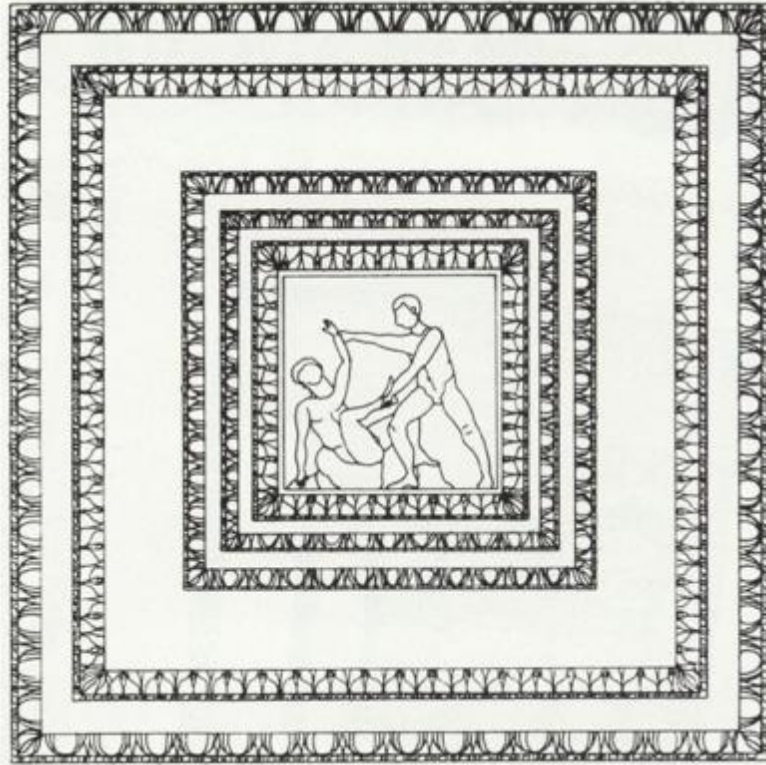


Figure 3.38: Reconstruction drawing of a coffer from the Mausoleion of Halicarnassus



Figure 3.39: One of the Belevi Mauseleum coffer plaques depicting the Centauromachy



Figure 3.40: Detail from the painted procession scene from the Sveshtari (69) tomb showing the horseman wearing a diadem featuring what appears to be a horn



Figure 3.41: Silver tetradrachm of Lysimachus featuring Alexander wearing a diadem featuring a ram's horn

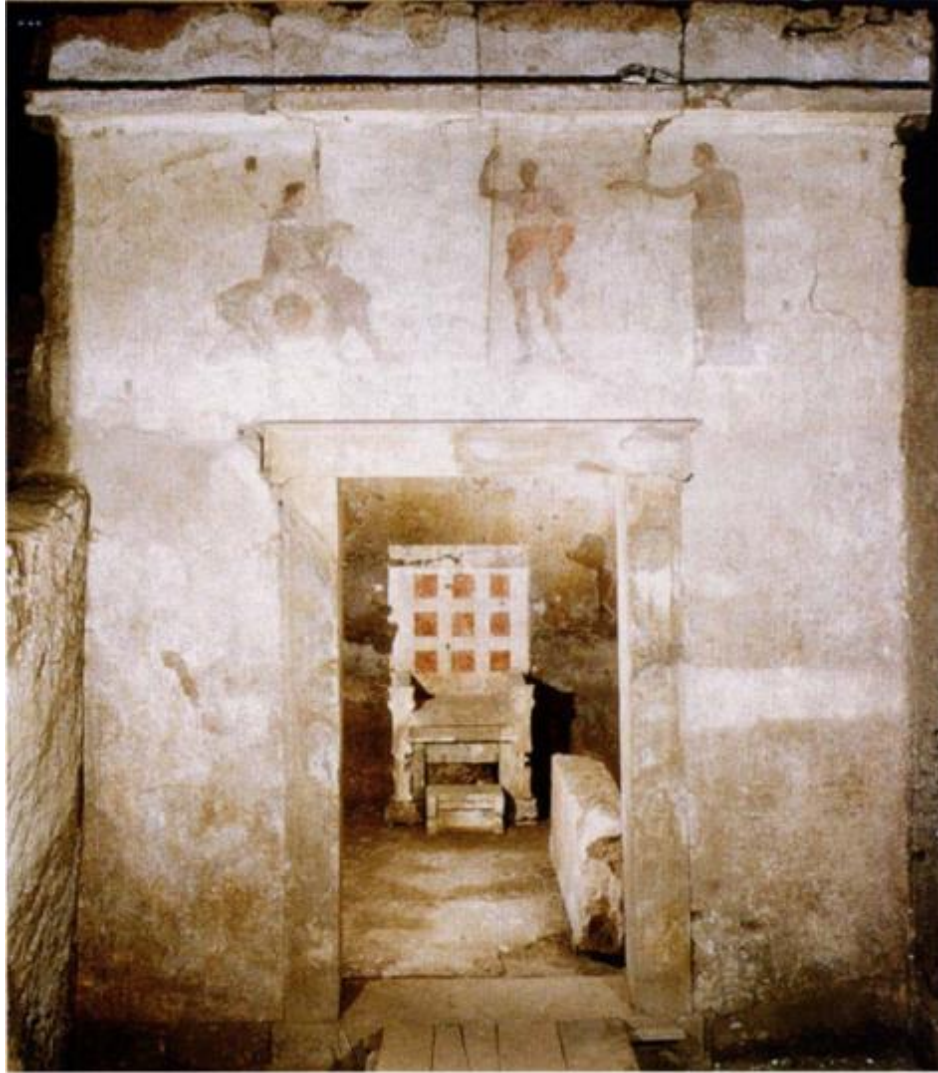
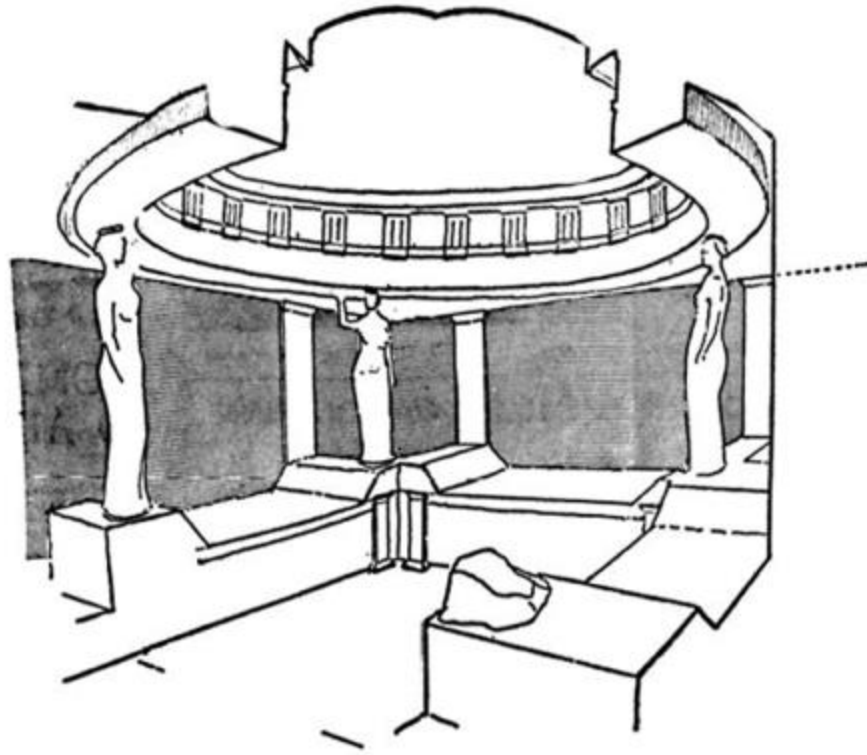


Fig. 3.42: The façade of tomb I in the Bella tumulus at Vergina



Figures 3.43-3.45: Signet rings from the Malomirovo-Zlatinitsa tumulus (top left), Brezovo (top right), and the Golyamata tumulus at Rozovets (bottom center)



Figures 3.46: Drawing of the burial chamber of the tomb at Aghia Triadha (Rhodes)

CHAPTER 4



Figures 4.1: Lamellae from iron pectoral from the Shushmanets (14) tomb



Figure 4.2: Lamellae-made pectoral from tomb B at Derveni



Figure 4.3: Lamellae-made pectoral from the Golyamata tumulus at Malomirovo-Zlatinitsa



Figure 4.4: Vase-shaped pendant from the Mal-Tepe (41) tomb



Figure 4.5-4.6: Pendants from the Koukova (L) and Malka Kosmatka (R) tumuli



Figure 4.7: Silver vessels from the Ostrusha (18) tomb after restoration



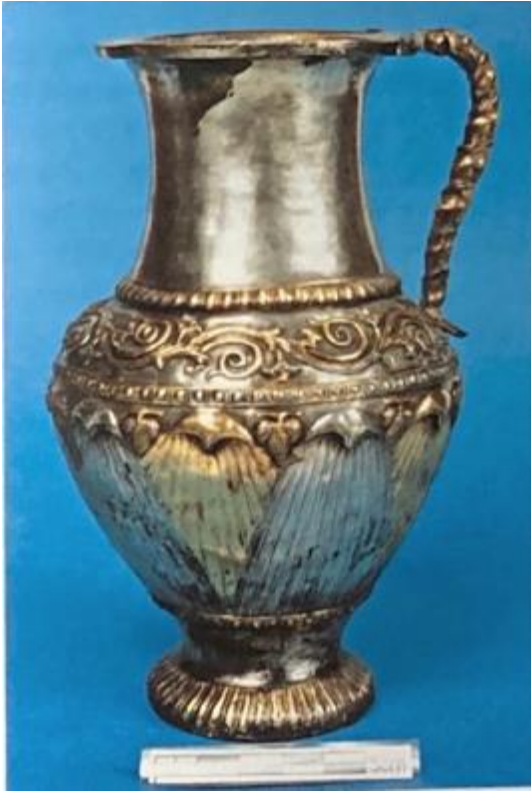
Figure 4.8: Pectoral from the Ostrusha (18) tomb



Figure 4.9: Oinochoe from the Golyama Kosmatka (13) tomb



Figure 4.10: Inscribed kalyx-cup from the Golyama Kosmatka (13) tomb



Figures 4.11-4.12: Inscribed jug from the Naip (49) tomb



Figure 4.13: Oinochoe from the Naip (49) tomb



Figures 4.14-4.15: Oinochoai from Malomirovo-Zlatinitsa (L) and the Mogilanskata tumulus (R)



Figures 4.16-4.18: Oinochoai from tomb III at Vergina (L), and tomb A at Derveni (Centre and R)



Figure 4.19: Situla from the Mal-Tepe (41) tomb



Figure 4.20: Situla fragments from the Kaloyanovo (35) tomb

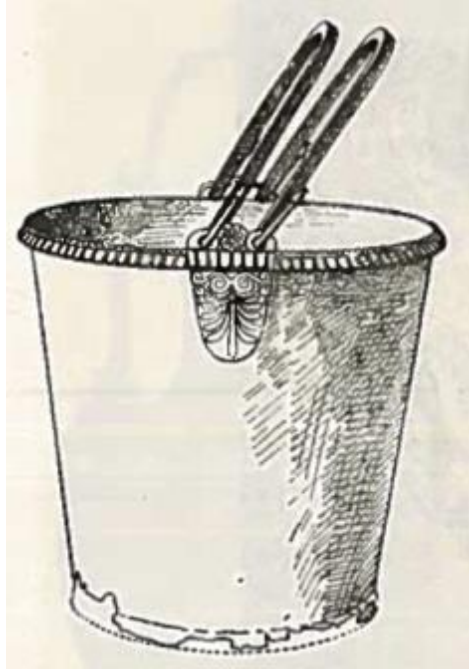


Figure 4.21: Drawing of the situla from the Rouets (66) tomb



Figure 4.22: Patera from the Golyama Kosmatka (13) tomb



Figure 4.23: Patera from the Naip (49) tomb



Figure 4.24: Patera from tomb II at Vergina



Figure 4.25: Patera from tomb III at Vergina



Figures 4.26-4.27: Strainers from the Kaloyanovo (35) (L) and Rouets (66) (R) tombs



Figure 4.28: Strainer from Naip (49) tomb



Figure 4.29: Sword and scabbard from the Golyama Kosmatka (13) tomb



Figure 4.30: Armour featuring lamellae from Malomirovo-Zlatinitsa

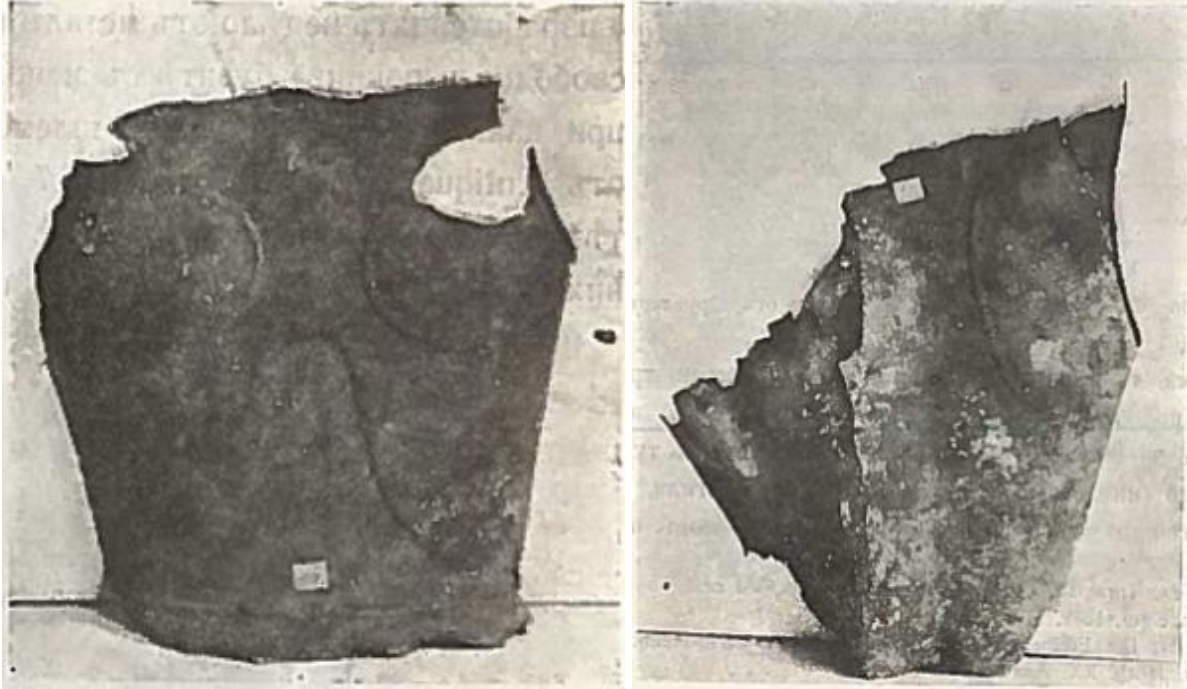


Figure 4.31-4.32: Bronze cuirass from the Tatarevo (36) tomb



Figures 4.33-4.35: Bronze armour from the Rouets (66) tomb



Figure 4.36: Pectoral from the Golytama Kosmatka (13) tomb



Figure 4.37: Pectoral from the Mal-Tepe (41) tomb



Figure 4.38: Pectoral from tomb II at Vergina



Figure 4.39: Pectoral from tomb II at Vergina



Figure 4.40: Pectoral from tomb III at Vergina



Figure 4.41: Helmet from the Golyama Kosmatka (13) tomb

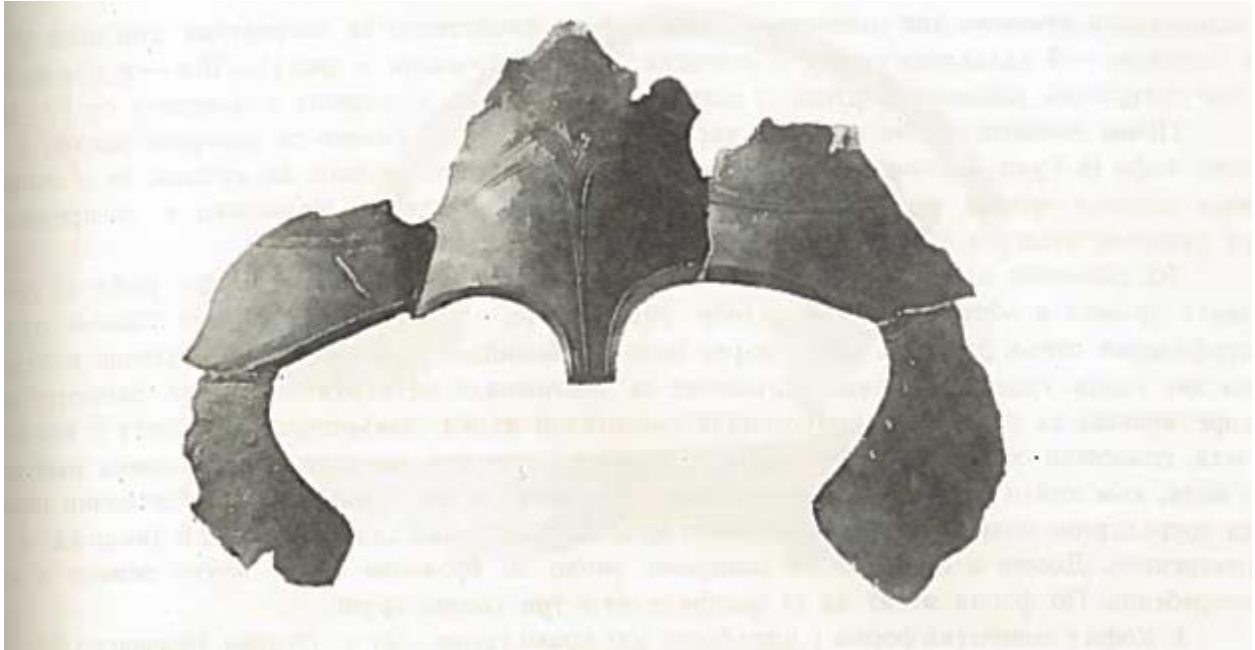


Figure 4.42: Helmet fragment from the Kaloyanovo (35) tomb

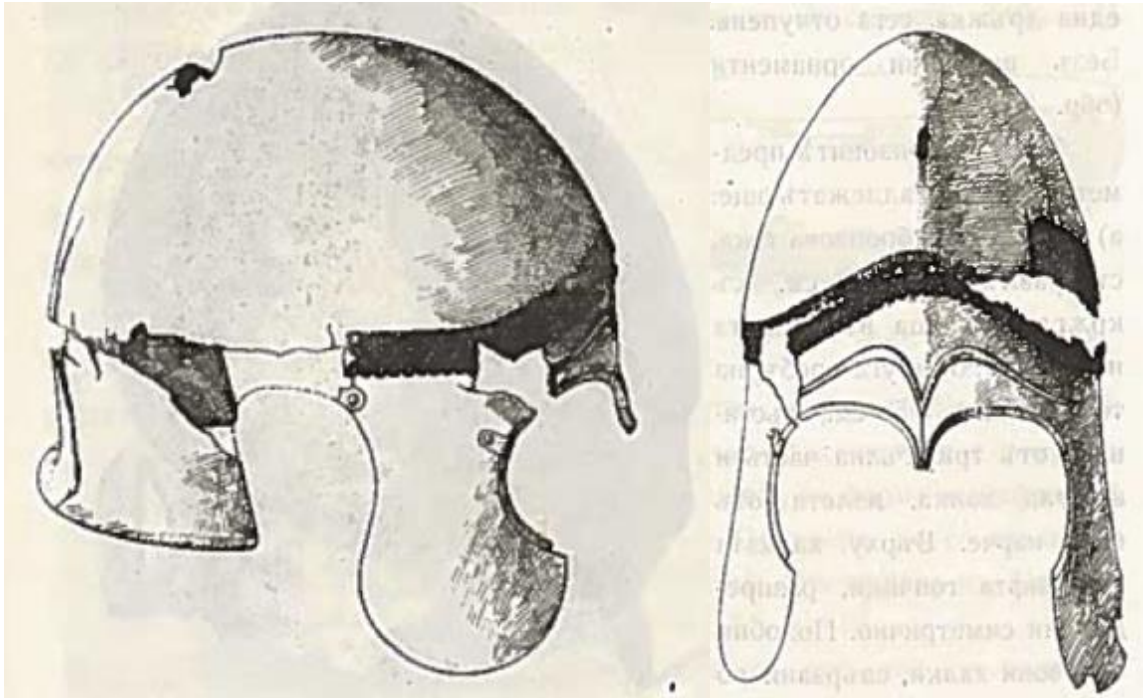


Figure 4.43: Drawings of the helmet from the Rouets (66) tomb



Figure 4.44: Helmet from the Sashova (23) tomb



Figure 4.45: Greaves from the Golyama Kosmatka (13) tomb



Figures 4.46-4.47: Greaves from tomb II Vergina (L) and tomb A at Derveni (R)



Figure 4.48-4.49: Greaves from Malomirovo-Zlatinitsa and the Mogilanskata tumulus

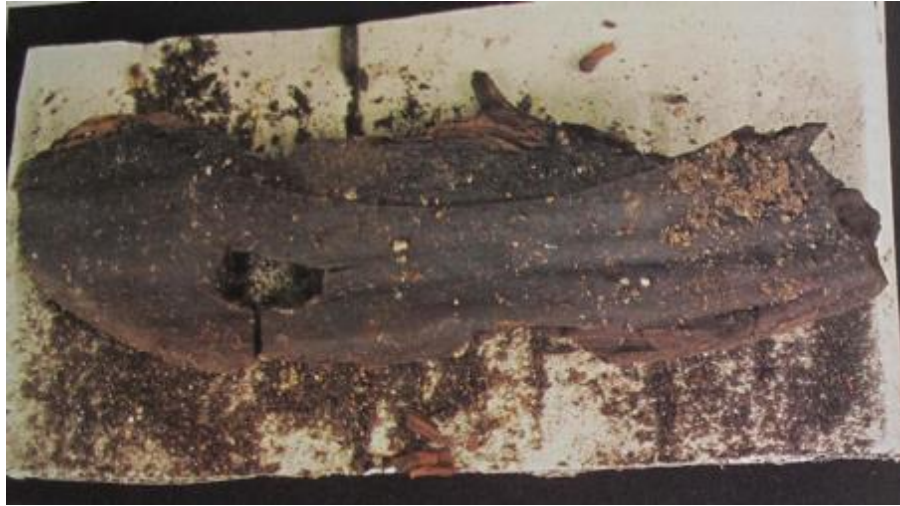


Figure 4.50: Wooden fragment from a shield from the Golyama Kosmatka (13) tomb



Figure 4.51: Fragment from the iron casting of a shield from the Golyama Kosmatka (13) tomb



Figure 4.52: Appliqués from a shield from the Golyama Kosmatka (13) tomb



Figure 4.53: Shield remains from the Naip (49) tomb



Figure 4.54: Ring from a grave in the Kazanluk valley featuring a turtle



Figure 4.55: Wreath from the Golyama Kosmatka (13) tomb



Figure 4.56: Wreath from Sanctuary of Eukleia at Vergina



Figure 4.57: Wreath from tomb II at Vergina



Figure 4.58: Wreath from tomb III at Vergina



Figure 4.59: Wreath from Amphipolis



Figure 4.60: Wreath from the Naip (49) tomb



Figure 4.61: Coin of Seuthes III

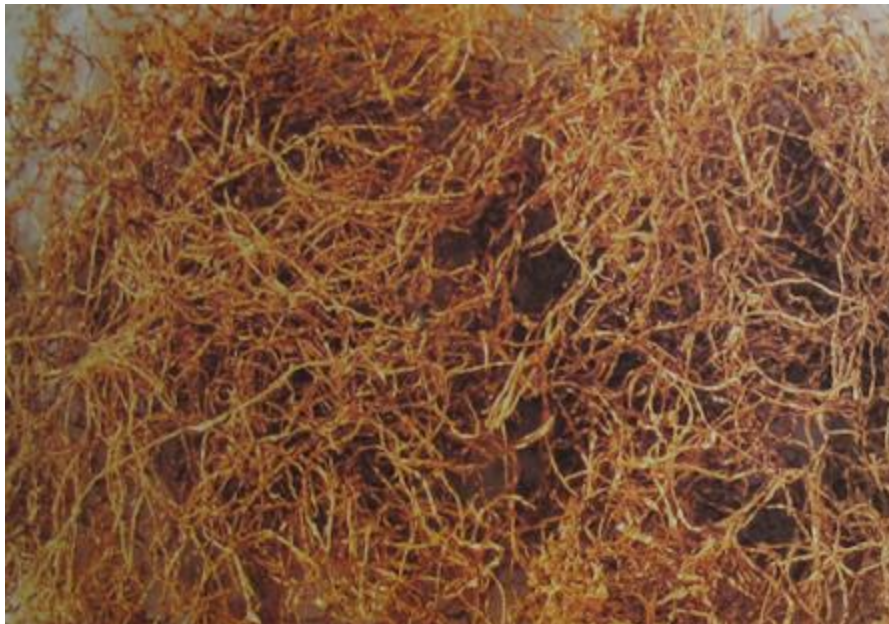


Figure 4.62: Gold threads from the Golyama Kosmatka (13) tomb



Figure 4.63: Gold threads from the Momina (34) tomb

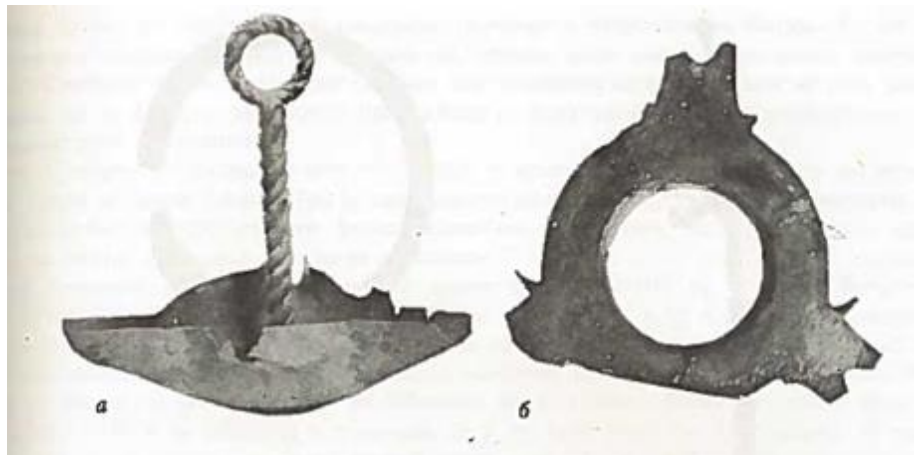


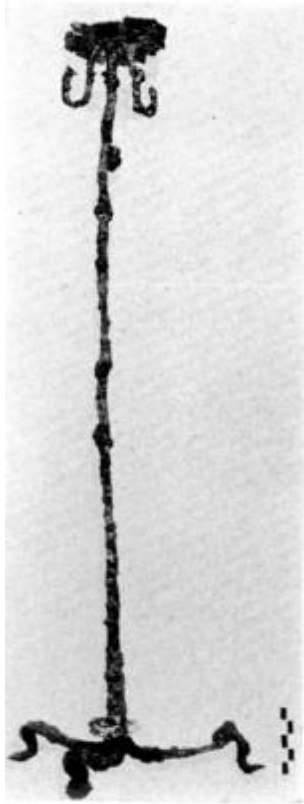
Figure 4.64: Bronze lamp from the Kaloyanovo (35) tomb



Figure 4.65: Bronze lamp from the Mal-Tepe (41) tomb



Figure 4.66: Bronze lamp from the Naip (49) tomb



Figures 4.67-4.69: Lamp stands from Kyrenia (L) and Kozani (Centre and R)



Figure 4.70: Pyxis from the Golyama Kosmatka (13) tomb



Figure 4.71: Gaming set from the Golyama Kosmatka (13) tomb

CHAPTER 6

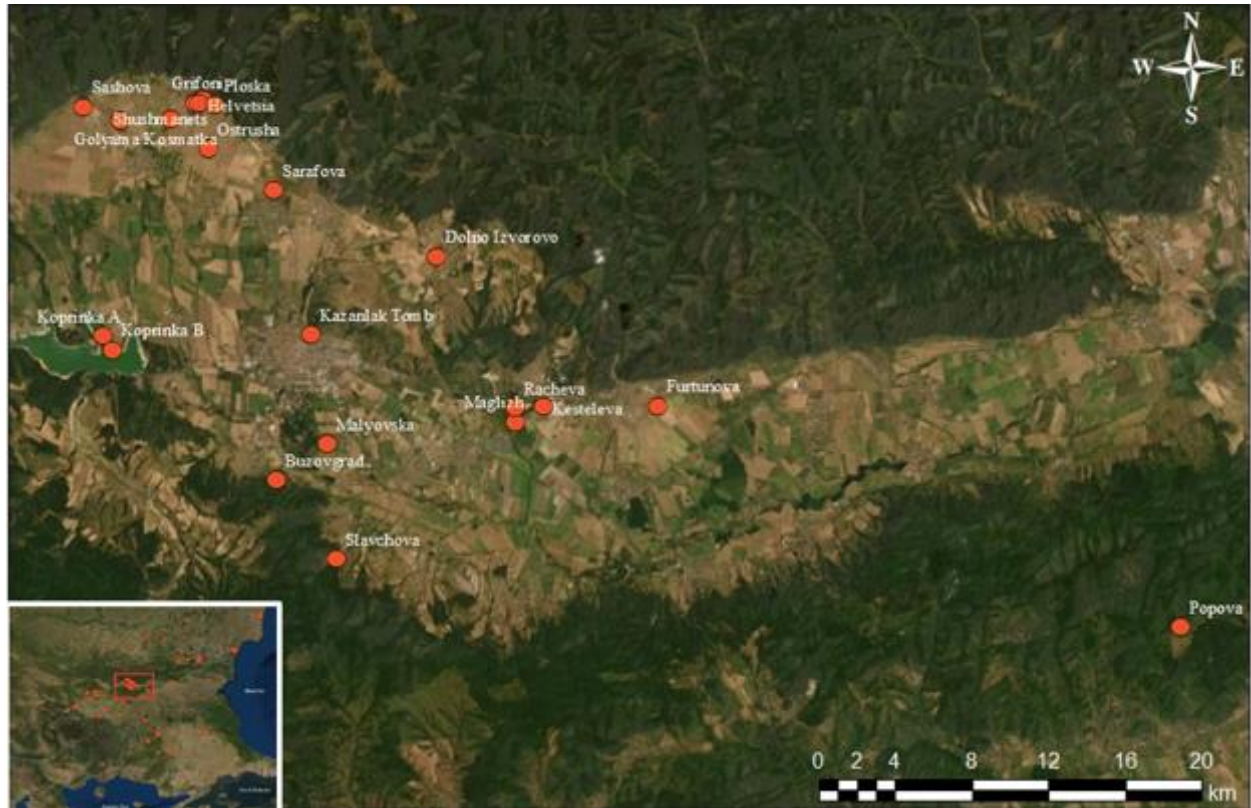


Fig. 6.1: Satellite map of the Kazanluk valley showing the local terrain



Figure 6.2: Map of Kozi Gramadi peak, indicating the locations of notable archaeological sites in the area, including Chetinyova (4), Horizont (5) and Manyov Dol 1 (8) tumuli, labelled as “Thracian temple[s]”

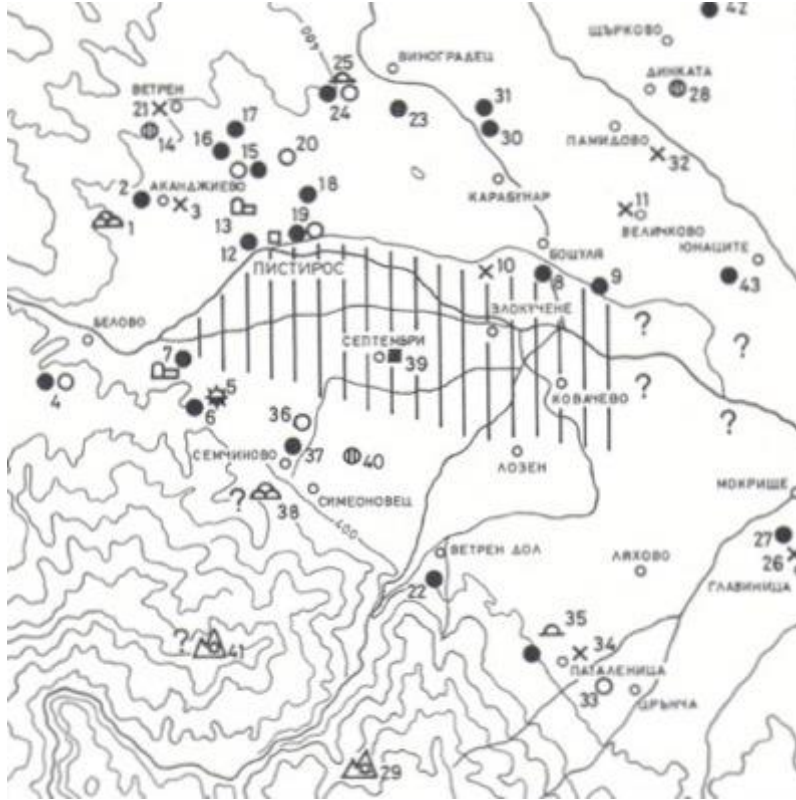


Figure 6.3: Map of the area surrounding Pistiros

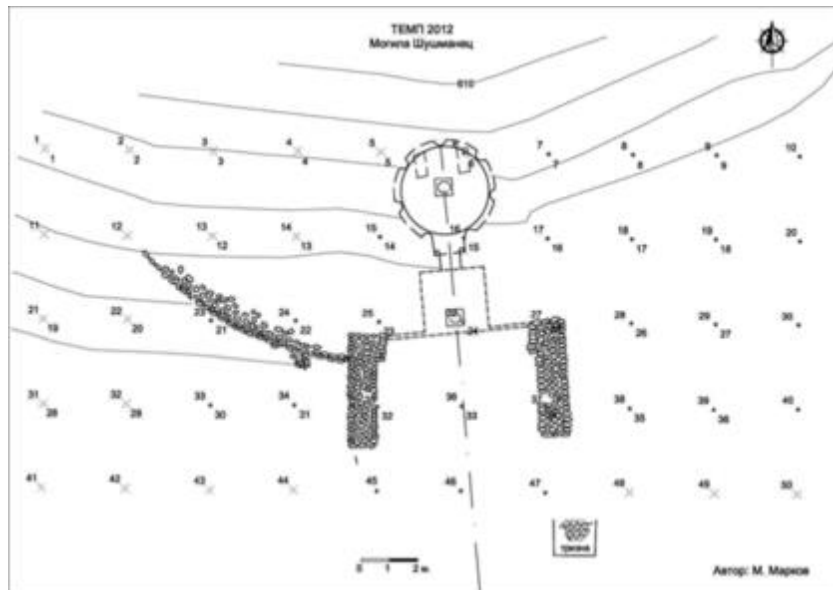


Figure 6.4: Plan of the tomb in Shushmanets (14) tumulus showing the supporting wall

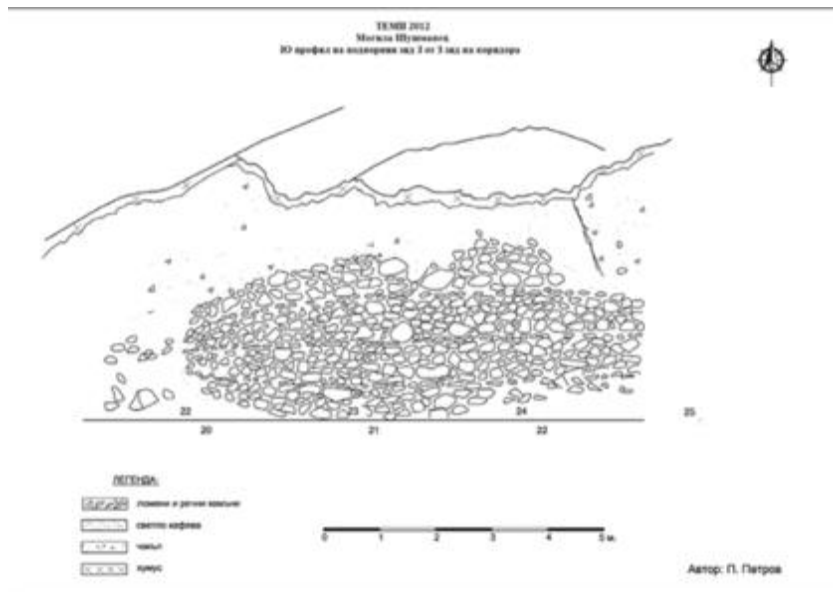
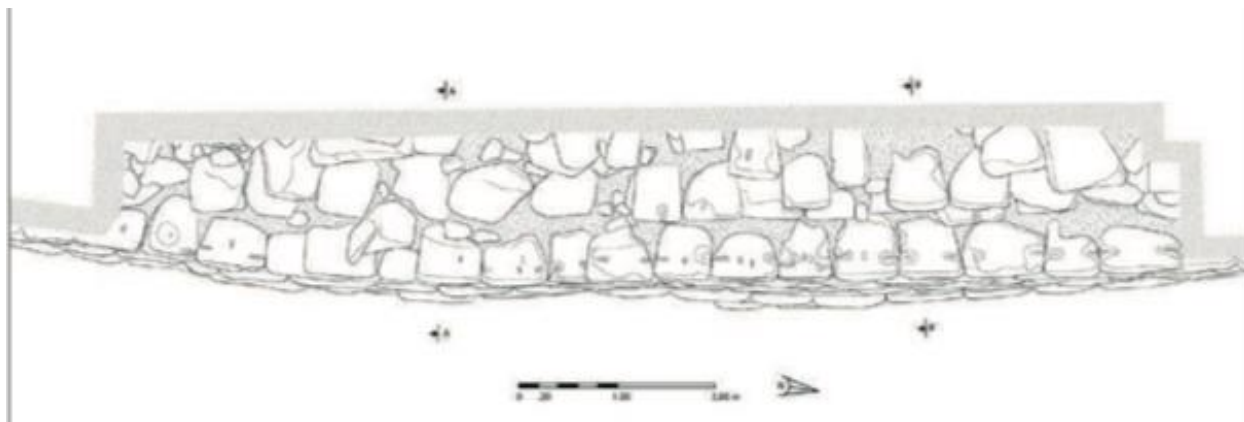


Figure 6.5: Drawing of the supporting wall of the tomb in the Shushmanets (14) tumulus



Figures 6.6 and 6.7: Photogrammetric model and a drawing of a section of the crepis wall of Chetinyova (4) tumulus with view from above

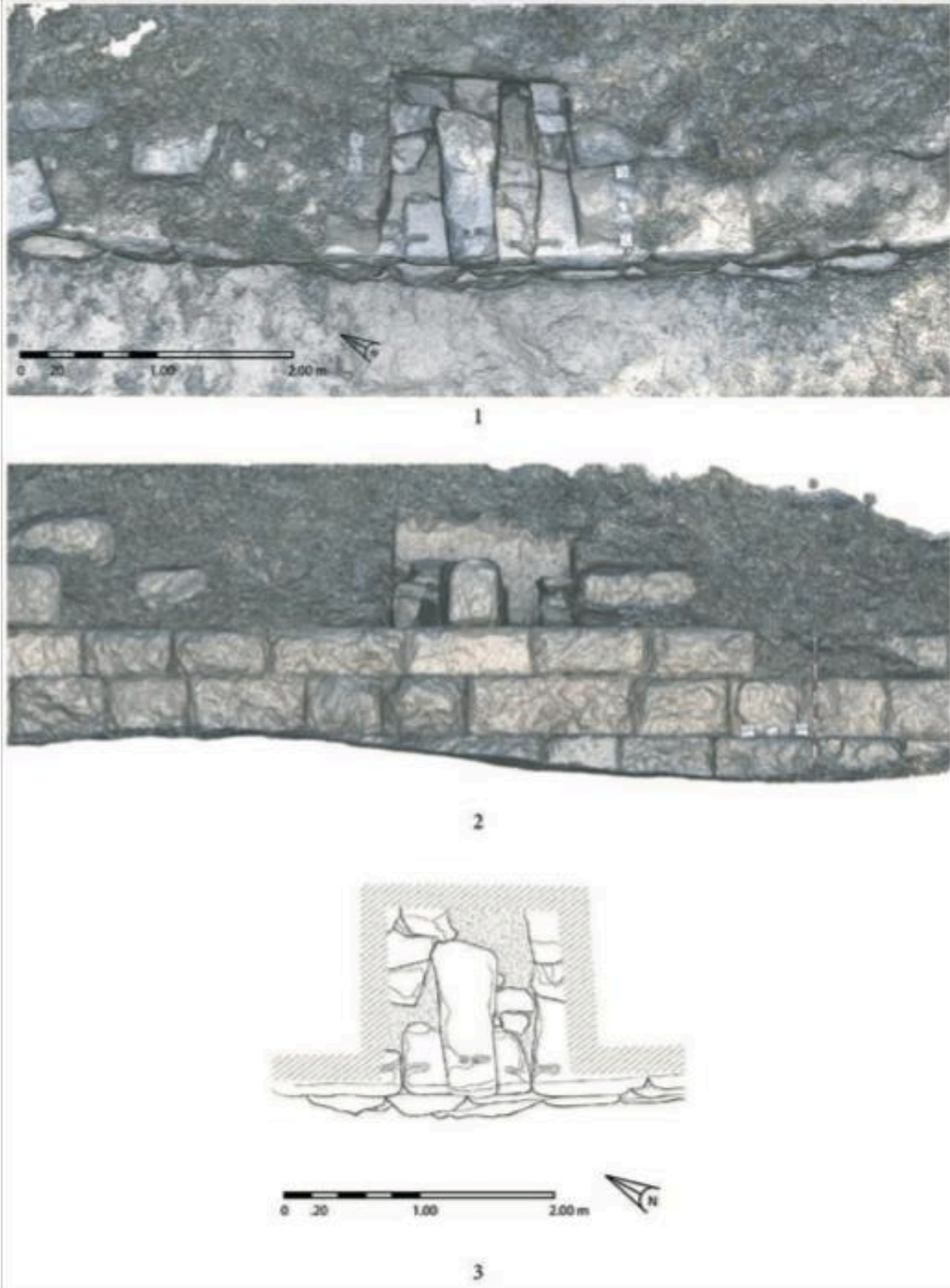


Figure 6.8: Photogrammetric models and drawing of one of the connective ashlars in the crepis of the Chetinyova (4) tumulus



Figure 6.9: A section of ashlars with clamp holes from the crepis of Chetinyova (4) tumulus



Figure 6.10: Exterior view of a section of the crepis of the Documaci (77) tumulus



Figure 6.11: Interior view of a section of the crepis of the Documaci (77) tumulus

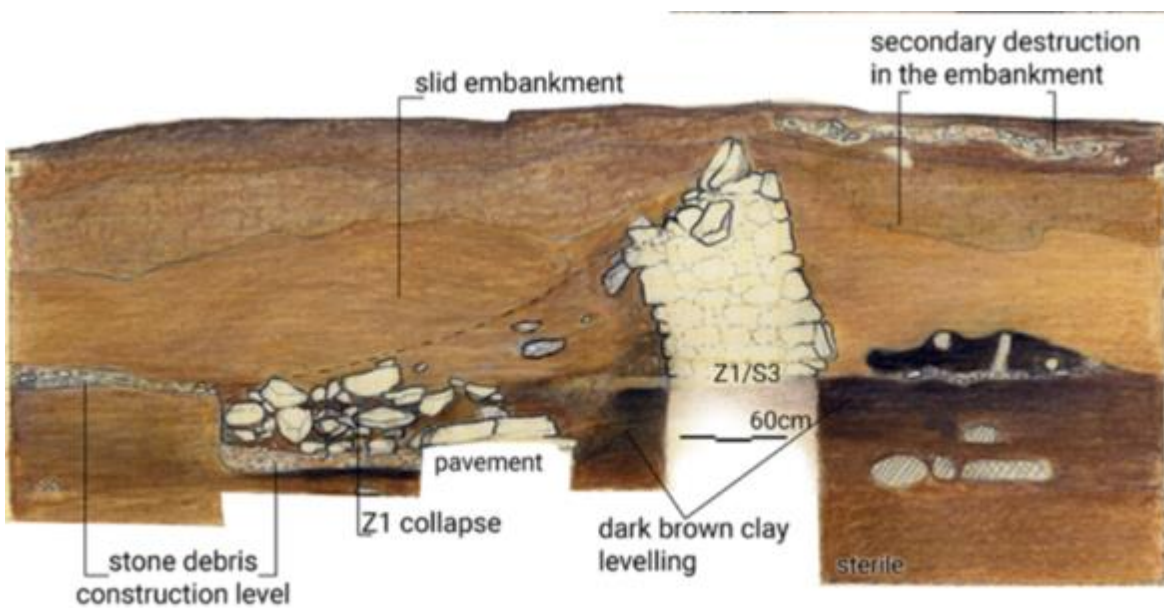


Figure 6.12: Drawing of the section of the crepis wall of the Documaci (77) tumulus with a collapse in front of it

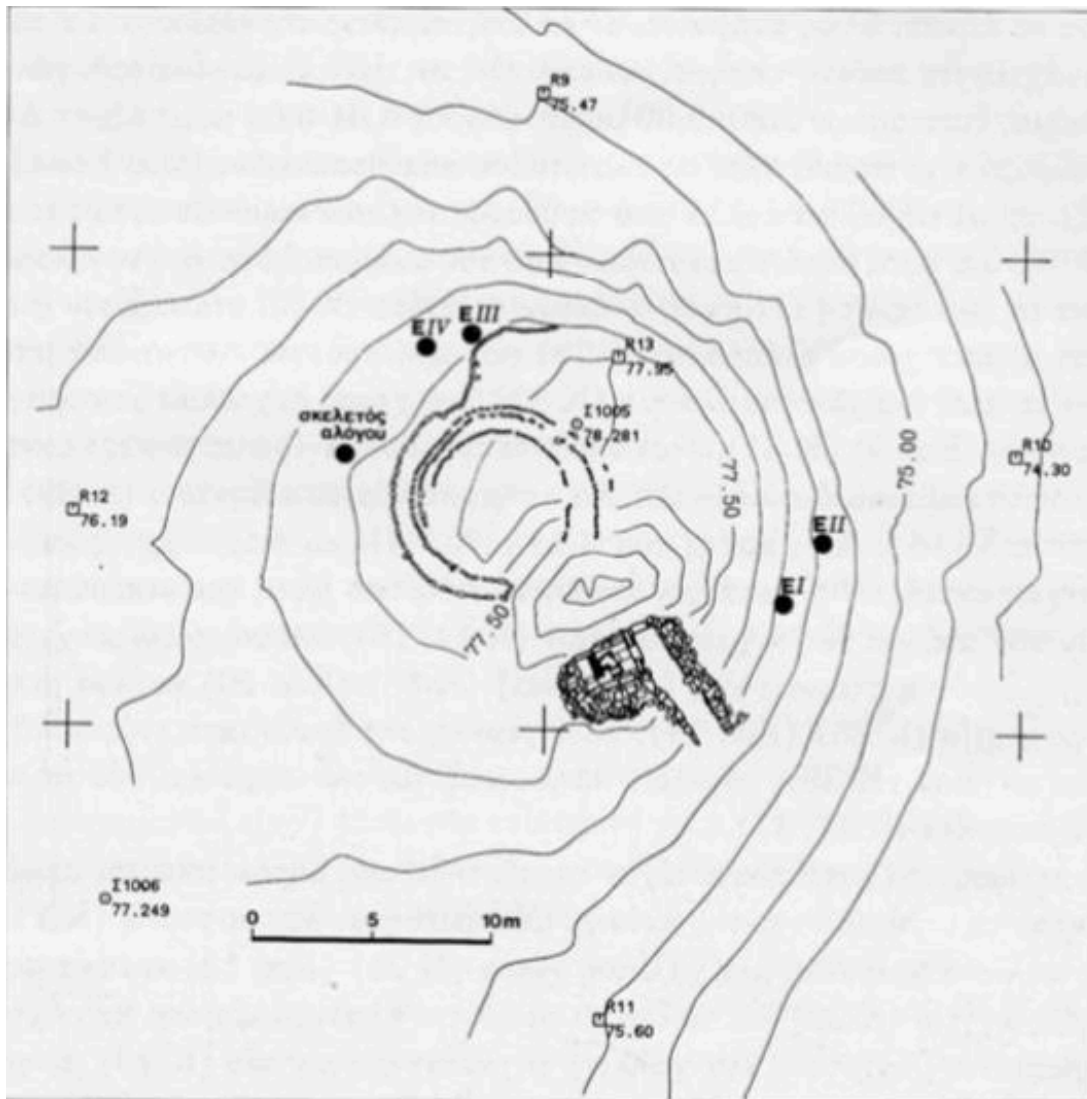


Figure 6.13: Plan of Rigio tumulus Γ (52), indicating the position of the concentric circles of the earlier tumulus and the Hellenistic tomb



Figure 6.14: The first of the two escharas from the Buzovgrad (32) tumulus



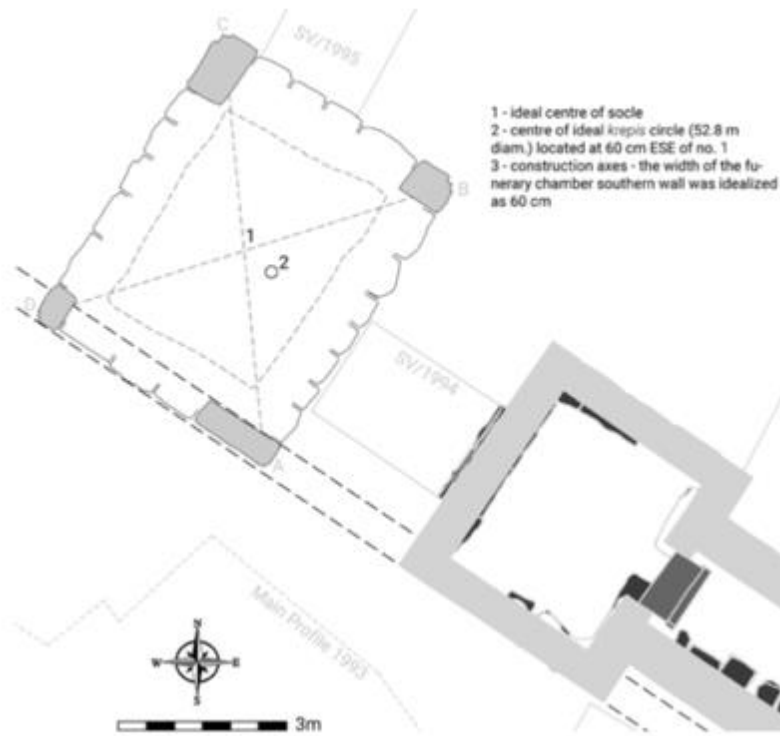
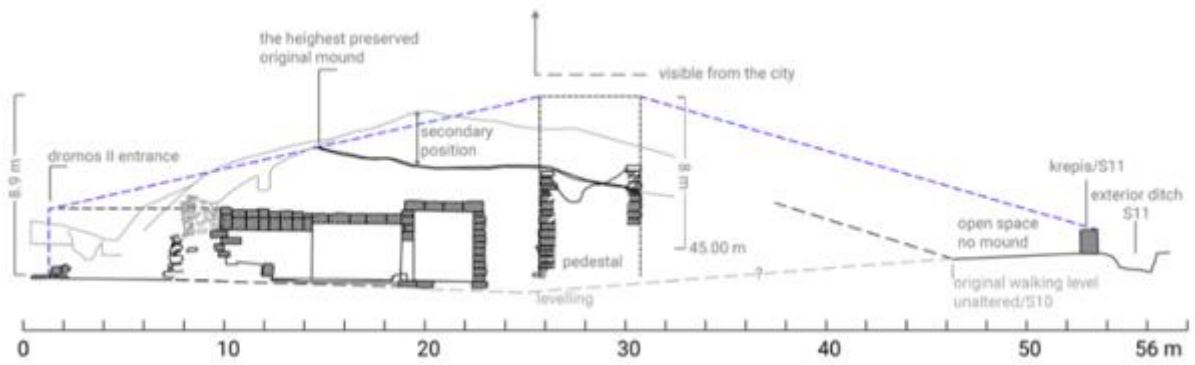
Figure 6.15: The second eschara from the Buzovgrad (32) tumulus, built on top of the first one



Figures 6.16 and 6.17: The tub-like container in the north-western periphery of Chetinyova (4) tumulus



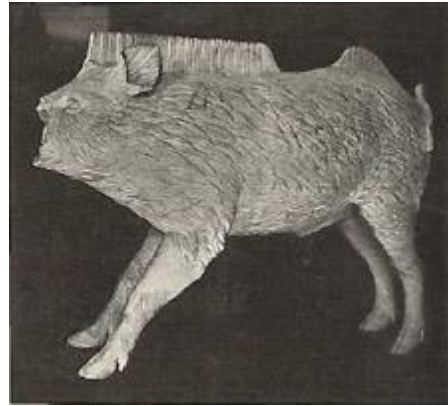
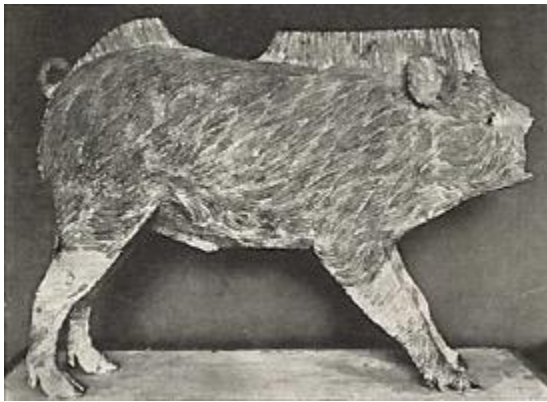
Figure 6.18: The platform in Documaci (77) tumulus, as seen from the north-west



Figures 6.19 and 6.20: Location of the platform in Documaci (77) tumulus and in relation to the built chamber tomb



Figure 6.21: Stone platform in a tumulus in the Callatis necropolis



Figures 6.22 and 6.23: The bronze boar from Mal-Tepe (41) tumulus



Figure 6.24: View of the facade of the tomb within Chernichino (40) tumulus showcasing the “staircase” leading to it



Figures 6.25 and 6.26: Secondary graves in Ostrusha (18) tumulus



Figures 6.27-6.29: The antefixes and central acroterion from Ostrusha (18)

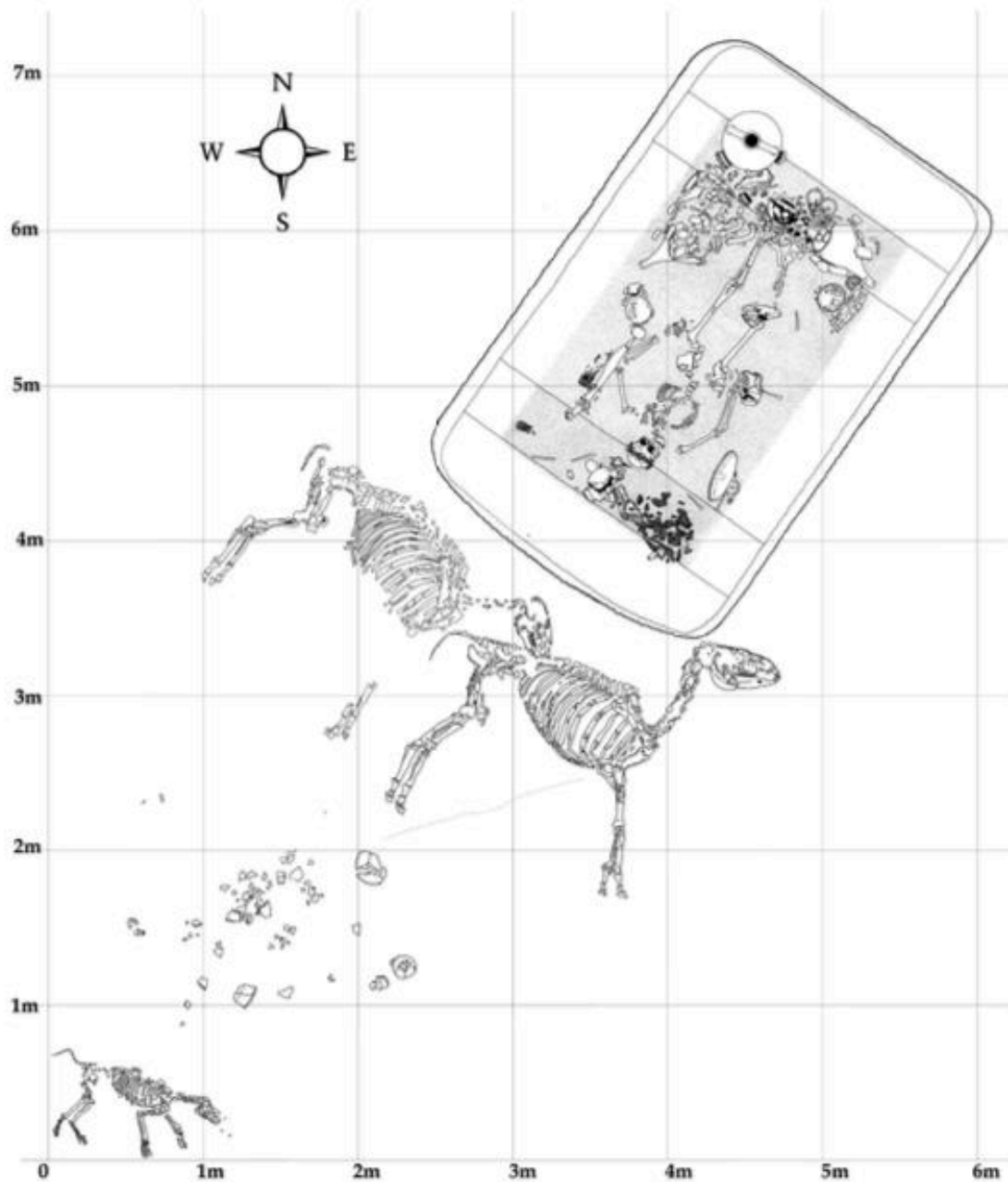
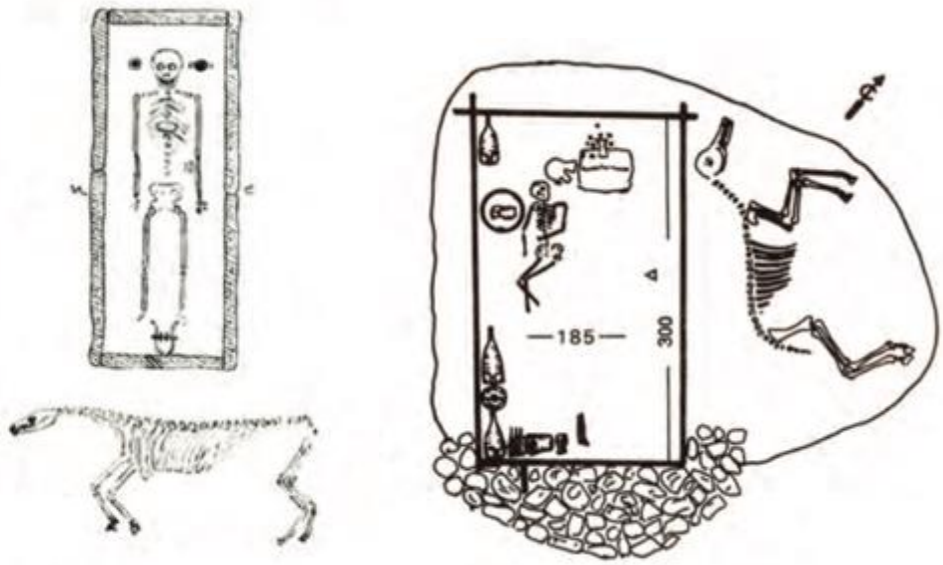


Figure 6.30: Plan of the Malomirovo-Zlatinitsa burial with the horses and the dog



Figures 6.31-6.33: Equine burials in tumuli at 1) Goyrani/Hadzhidimovo 2) Asara, Plovdiv 3) Iasenovo



Figure 6.34: Restored silver gilt jug from the tumular embankment of the Kazanluk (22) tomb